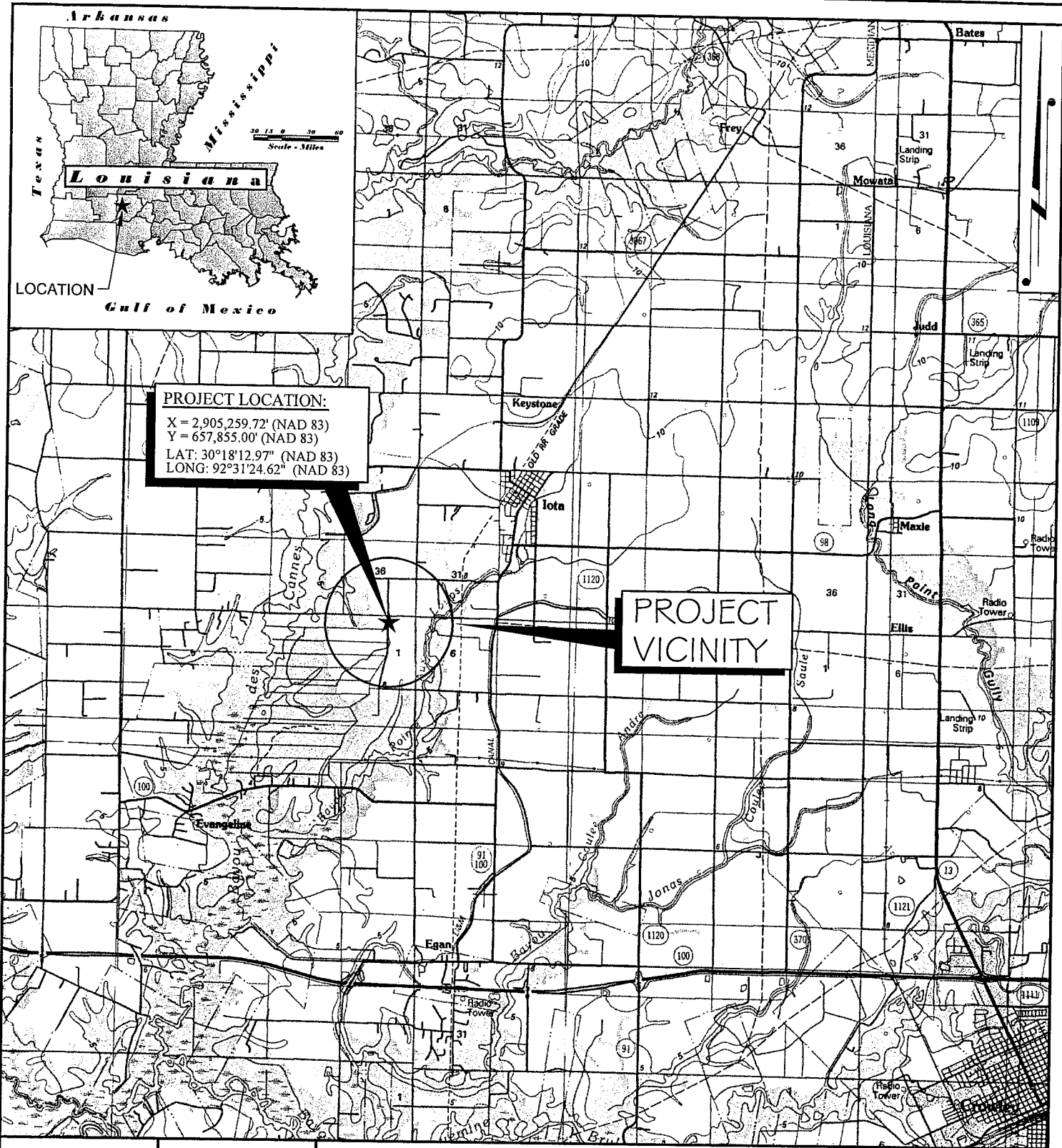
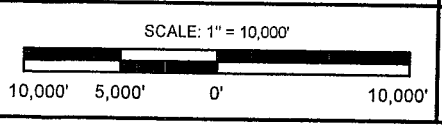


PROJECT LOCATION:
 X = 2,905,259.72' (NAD 83)
 Y = 657,855.00' (NAD 83)
 LAT: 30°18'12.97" (NAD 83)
 LONG: 92°31'24.62" (NAD 83)

PROJECT VICINITY



DRAWN BY:	SPM	APPROVED BY:	MDH
DATE:	02/15/2013	JOB NO:	2012.1052
DRAWING NAME:	12.1052P-1.DWG		
SHEET NO:	1	OF	4
PROJECTION:	PROJECTION		
GEO. DATUM:	NAD83 VERT. DATUM: NAVD88		
GRID UNITS:	US SURVEY FEET		



VICINITY MAP

CROSSTEX PROCESSING SERVICES, LLC

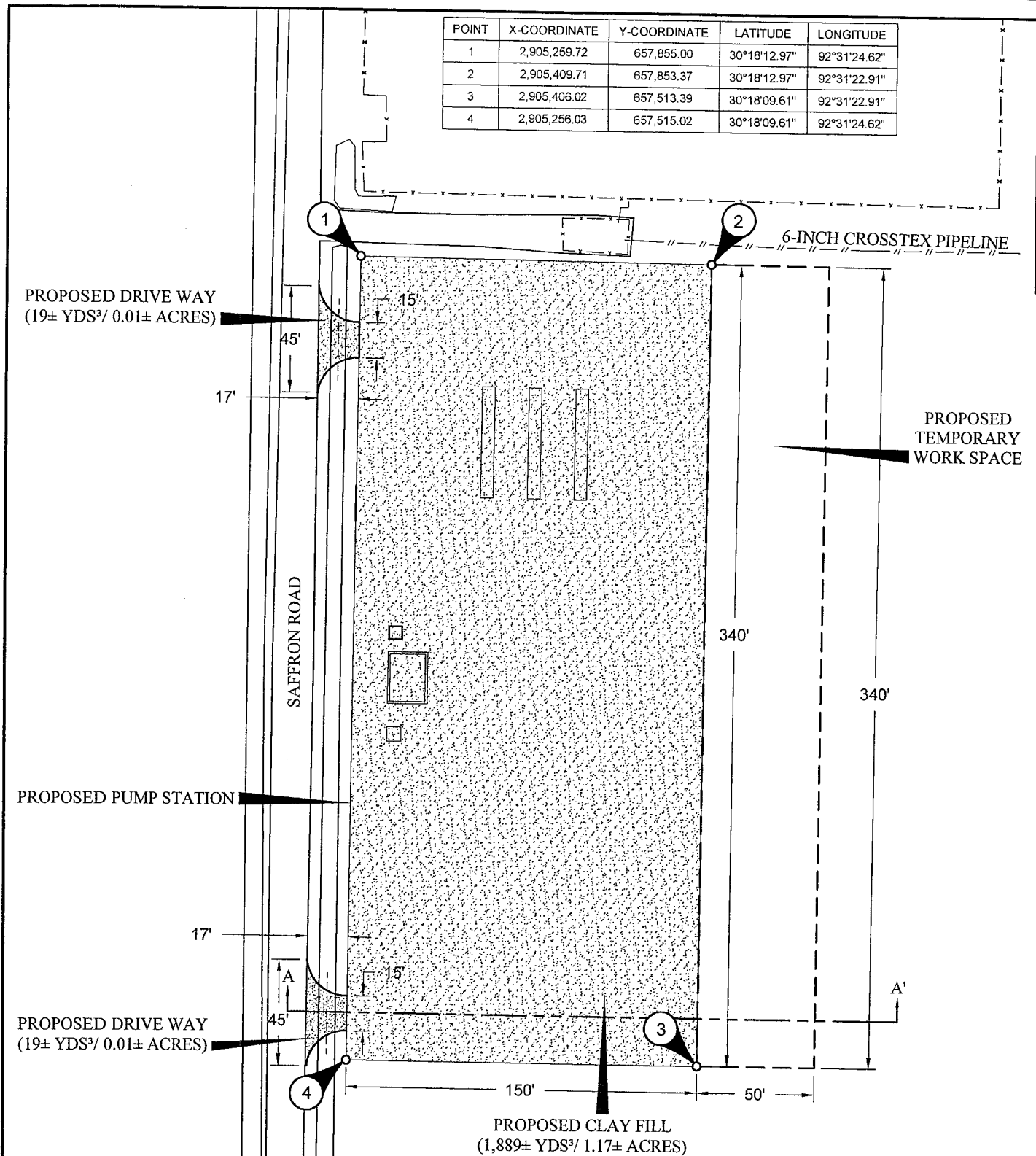
**PROPOSED EGAN PUMP STATION
 TO SERVE THE 6-INCH EGAN PIPELINE
 LOCATED IN SECTION 1, T09S-R02W
 ACADIA PARISH, LOUISIANA**

REV. NO:	00	REV. DATE:	--/--	REV. BY:	--
REVISION DESCRIPTION:					

CROSSTEX

2/15/2013 - P:\Y-2012\2012.1052\DWG\EN112.1052P-1.DWG

POINT	X-COORDINATE	Y-COORDINATE	LATITUDE	LONGITUDE
1	2,905,259.72	657,855.00	30°18'12.97"	92°31'24.62"
2	2,905,409.71	657,853.37	30°18'12.97"	92°31'22.91"
3	2,905,406.02	657,513.39	30°18'09.61"	92°31'22.91"
4	2,905,256.03	657,515.02	30°18'09.61"	92°31'24.62"



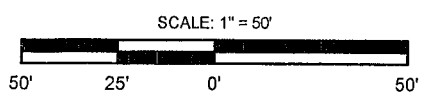
PROPOSED CLAY FILL
(1,889± YDS³/ 1.17± ACRES)

DRAWN BY: SPM/LMB	APPROVED BY: MDH
DATE: 02/15/2013	JOB NO: 2012.1052
DRAWING NAME: 12.1052P-2 REV 2-13-13.DWG	
SHEET NO: 2 OF 4	
PROJECTION: PROJECTION GEO. DATUM: NAD83 VERT. DATUM: NAVD88 GRID UNITS: US SURVEY FEET	

PLAN VIEW

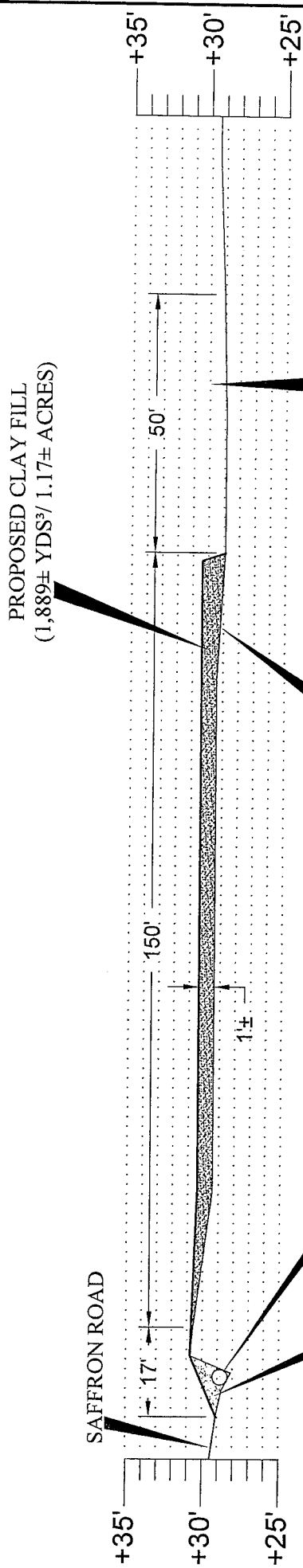
CROSSTEX PROCESSING SERVICES, LLC

PROPOSED EGAN PUMP STATION
TO SERVE THE 6-INCH EGAN PIPELINE
LOCATED IN SECTION 1, T09S-R02W
ACADIA PARISH, LOUISIANA



REV. NO: 00	REV. DATE: --/--	REV. BY: --
REVISION DESCRIPTION:		
-		

2/15/2013 - P:\Y-2012\2012.1052\DWG\ENVI12.1052P-2 REV 2-13-13.DWG



CROSS-SECTION A-A'

LOOKING NORTHERLY

PROFILE VIEW

CROSSTEX PROCESSING SERVICES, LLC

PROPOSED EGAN PUMP STATION
TO SERVE THE 6-INCH EGAN PIPELINE
LOCATED IN SECTION 1, T09S-R02W
ACADIA PARISH, LOUISIANA

DRAWN BY: SPM/LMB	APPROVED BY: MDH
DATE: 02/15/2013	JOB NO: 2012.1052
DRAWING NAME: 12.1052P-2	REV 2-13-13.DWG
SHEET NO: 3	OF 4
PROJECTION: PROJECTION	
GEO. DATUM: NAD83 VERT. DATUM: NAVD88	
GRID UNITS: US SURVEY FEET	
REVISION DESCRIPTION:	

HORIZONTAL SCALE: 1" = 30'	
VERTICAL SCALE: 1" = 10'	
CROSSTEX	
REV. NO: 00	REV. DATE: --
REV. NO: --	REV. DATE: --

NOTES

As-built drawings will be submitted within 30 days of completion of this project to the Louisiana Department of Natural Resources, Office of Conservation, Pipeline Division, P. O. Box 94275 Baton Rouge, LA 70804, and to the Louisiana Department of Natural Resources, Coastal Management Division, P. O. Box 44487, Baton Rouge, LA 70804-4487.

In order to ensure the safety of all parties, the permittee shall contact the Louisiana One Call System (1-800-272-3020) a minimum of 48 hours prior to the commencement of any excavation (digging, dredging, jetting, etc.) or demolition activity.

All structures, facilities, well and pipelines/flowlines occurring in open water areas or in oilfield canals or slips shall be removed within 120 days of abandonment or the facilities for the herein permitted use unless prior written approval to leave such structures in place is received from the Coastal Management Division. This condition does not preclude the necessity for revising the current permit or obtaining a separate Coastal Use Permit, should one be required.

Applicant is subject to all applicable state laws related to damages which are demonstrated to have been caused by this proposed action.

TOTAL IMPACTS

<u>EXCAVATIONS</u>	
UPLANDS:	0 CU. YDS. 0.00 ACS.
WETLANDS:	0 CU. YDS. 0.00 ACS.
NON-VEGETATED WATER BOTTOMS:	0 CU. YDS. 0.00 ACS.
<u>FILL AREAS</u>	
UPLANDS:	19 CU. YDS. 0.01 ACS.
WETLANDS:	1,889 CU. YDS. 1.17 ACS.
NON-VEGETATED WATER BOTTOMS:	19 CU. YDS. 0.01 ACS.
<u>FILL MATERIALS</u>	
CLAY FILL:	1,889 CU. YDS.
GRAVEL FILL:	38 CU. YDS.

EQUIPMENT

Bulldozer
Backhoe
Wheeled Vehicles

NOTES

CROSSTEX PROCESSING SERVICES, LLC

PROPOSED EGAN PUMP STATION
TO SERVE THE 6-INCH EGAN PIPELINE
LOCATED IN SECTION 1, T09S-R02W
ACADIA PARISH, LOUISIANA

NOT TO SCALE



REV. NO: 00	REV. DATE: --/--	REV. BY: --
REVISION DESCRIPTION: --		