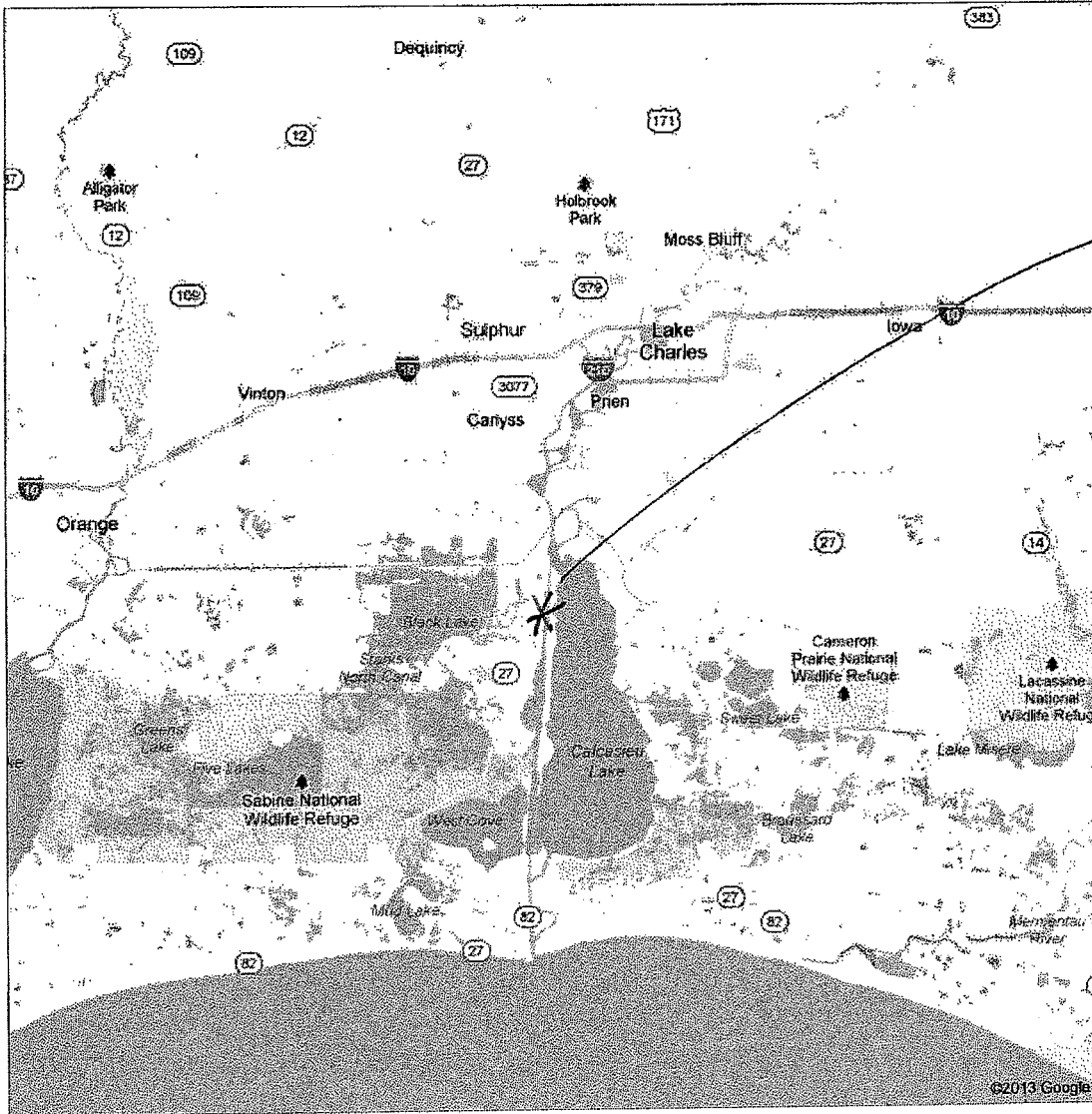


A

Google

Get Google Maps on your phone
Text the word "GMAPS" to 466453




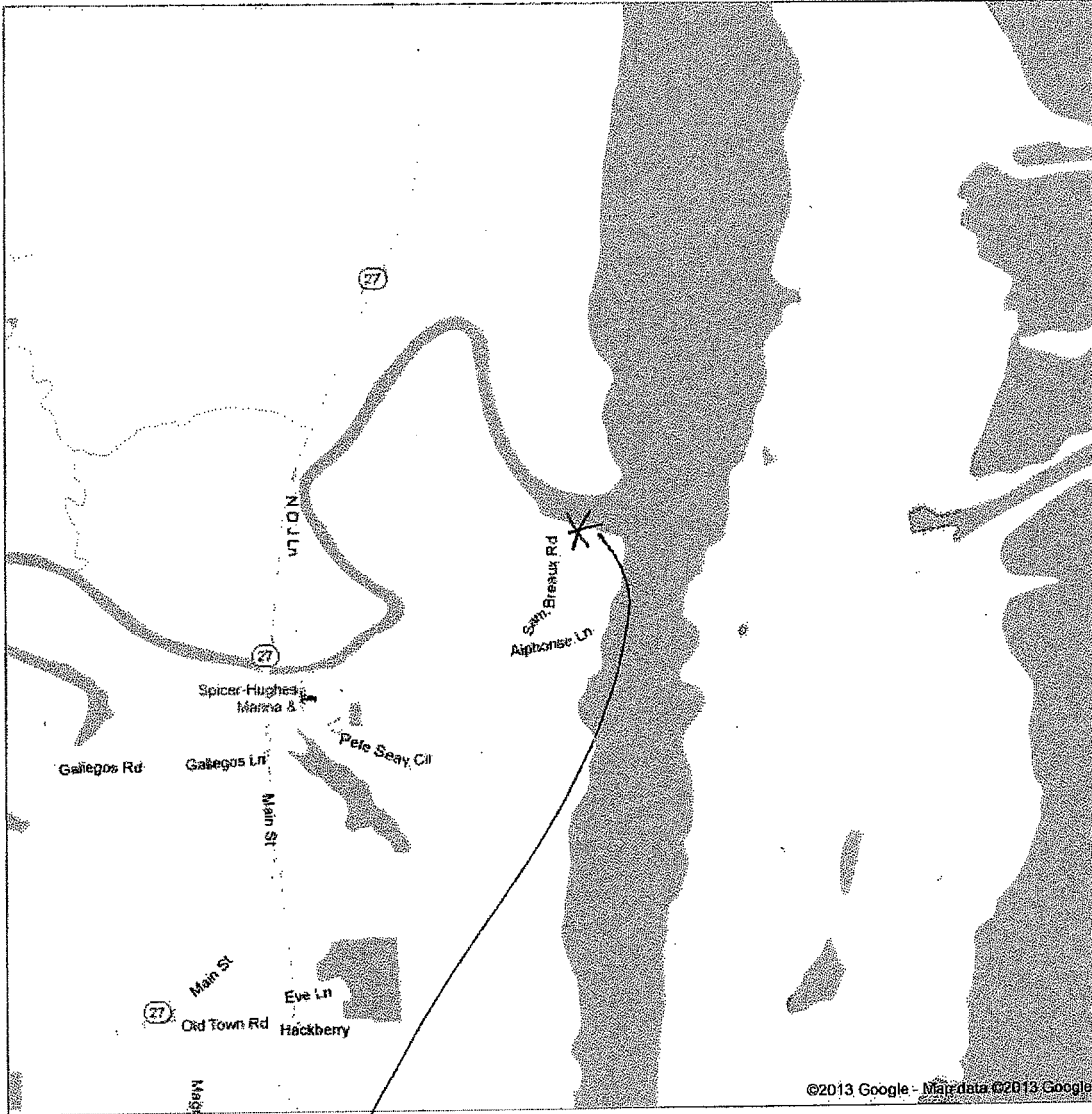
Project Site

Project Site
 30-00-28.70
 -93. -20 -06.55

(B)

Google

Get Google Maps on your phone
Text the word "GMAPS" to 466453

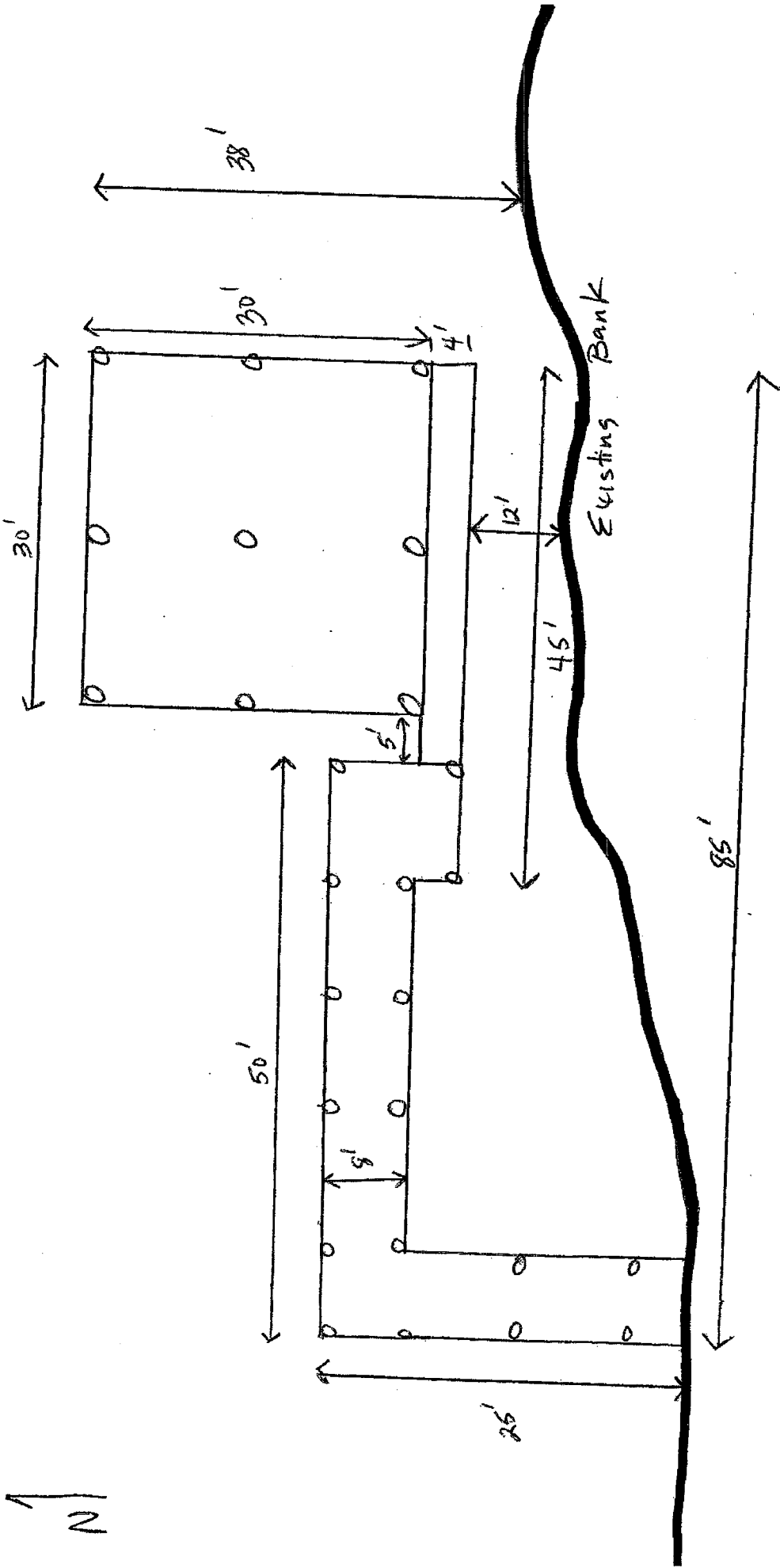



Project Site
30 - 00 - 28.70
-93 - 20 - 06.55

①

OVERHEAD VIEW OF WHARF AND BOATHOUSE 3/20/13

KELSO BAYON (Black Lake Bayou)



1mm = 0.5'

3/20/13

CROSS SECTION OF BOAT HOUSE

②

1 mm = 0.25'

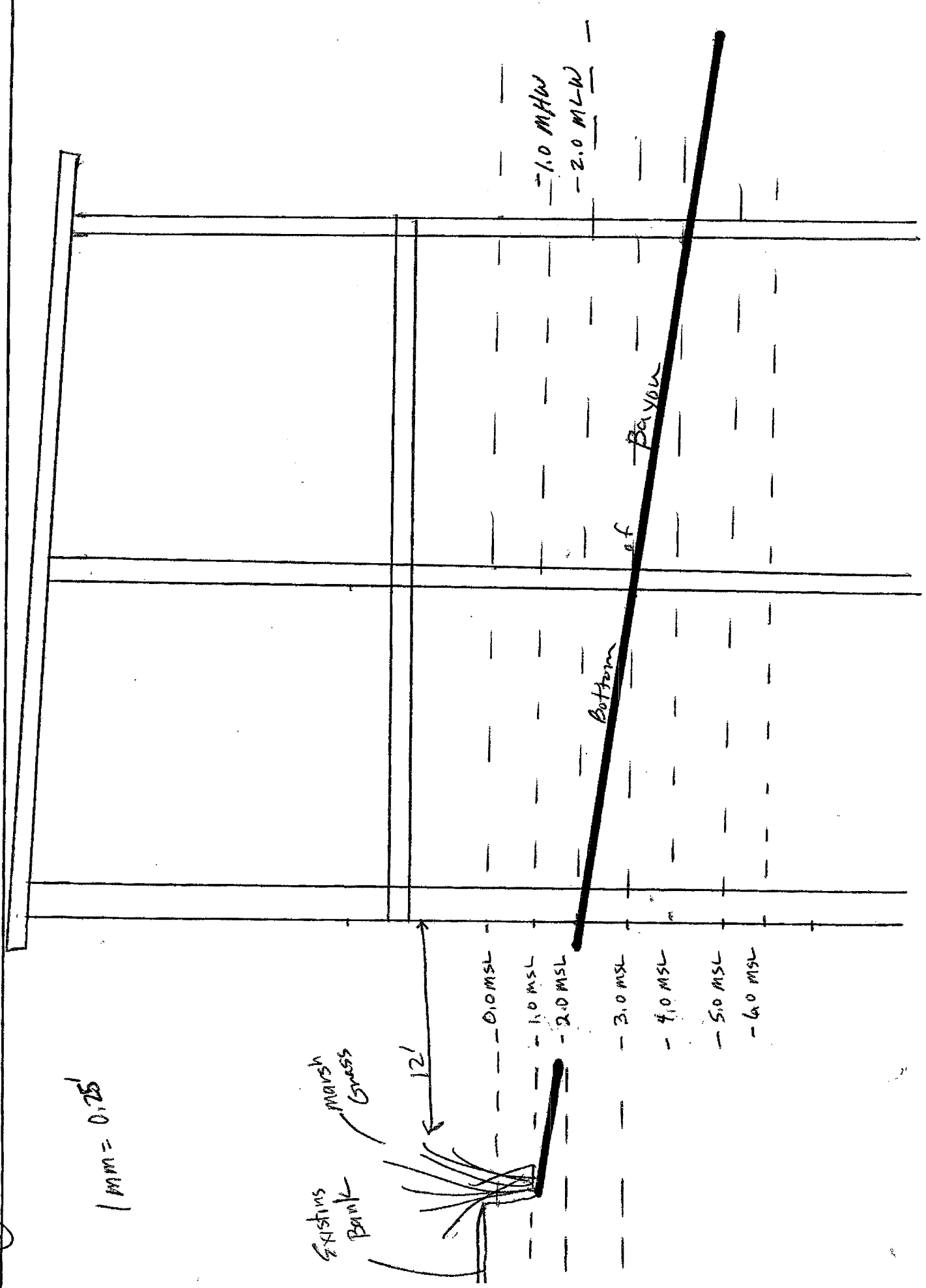
EXISTING BANK
Marsh Grass

12'

- 0.0 MSL
- 1.0 MSL
- 2.0 MSL
- 3.0 MSL
- 4.0 MSL
- 5.0 MSL
- 6.0 MSL

- 1.0 MHW
- 2.0 MLW

Bottom of Bayou



③

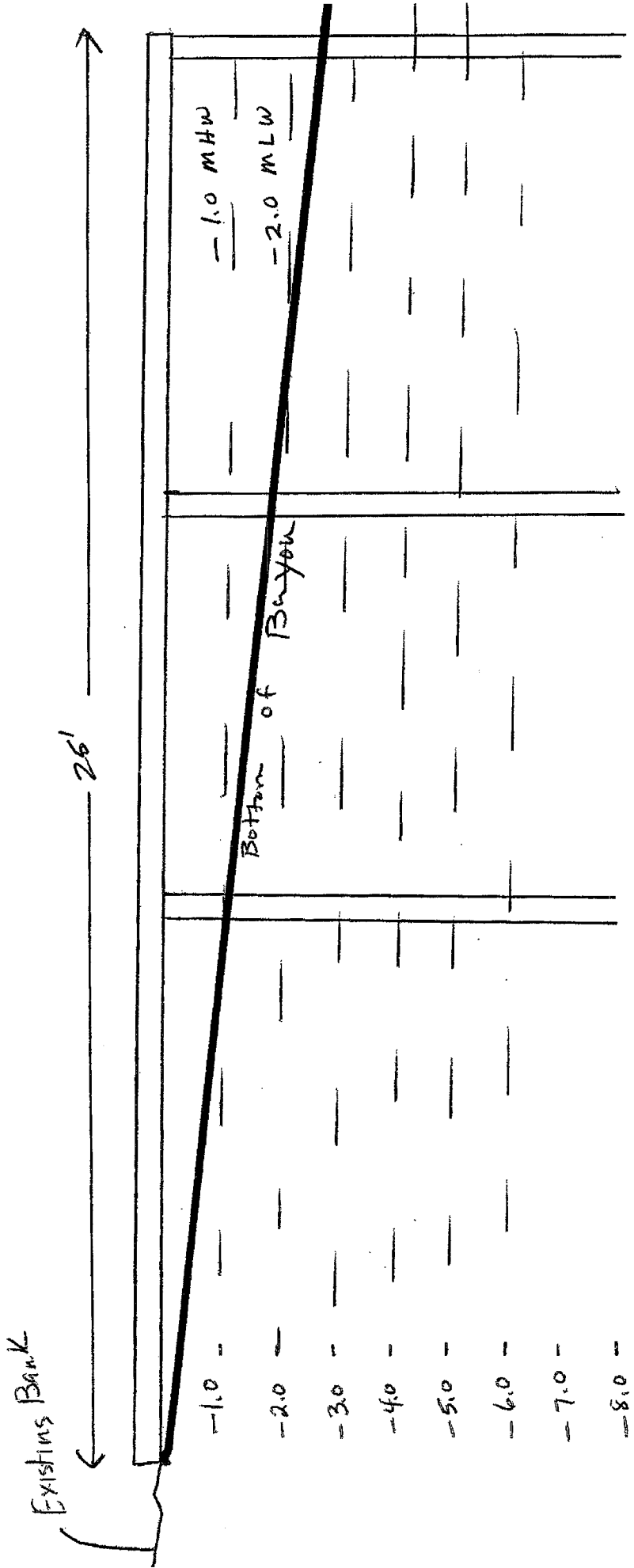
SIDE VIEW OF WHARF WALKWAY

3/20/13

N



1 mm = 1.0'

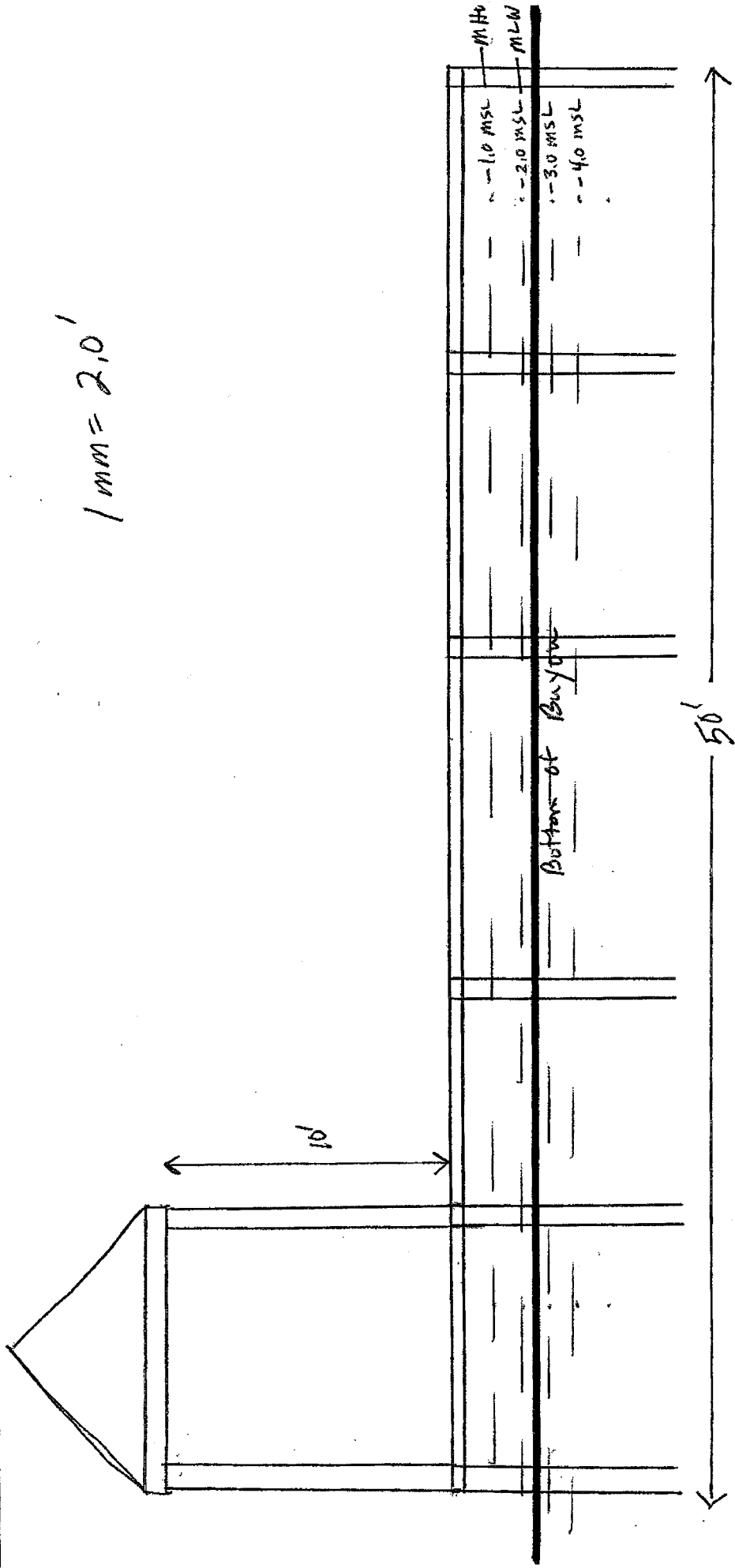


FRONT VIEW OF WHARF (FAZING NORTH)

3/20/13

(4)

1 mm = 2.0'



— Bottom of Bayou

Calcasieu Ship Channel

N1

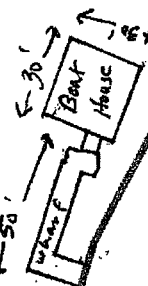
WELL

S-00°23'18"-W
245.98'

102.08'

305' to other Bank
of Bayou

42' from
Bank



S-89°36'28"-E
358.63'

SAM
BREAUX TRACT "E"
0.85
ACRES +/-

S-89°38'10"-E
365.159'

102.50'

150' to
center line
of Bayou

Existing Piles

Rickey
Hayes
Property

Existing
Piles

SAM BREAUX JR.

TRACT "F"

1mm = 3'

Loc. 30-00-28.7°

Long - 93-20-06.55

NO WORK NEEDED ON

LAND

30-00-28.7°, -93-20-06.55

PLAN VIEW

(5)