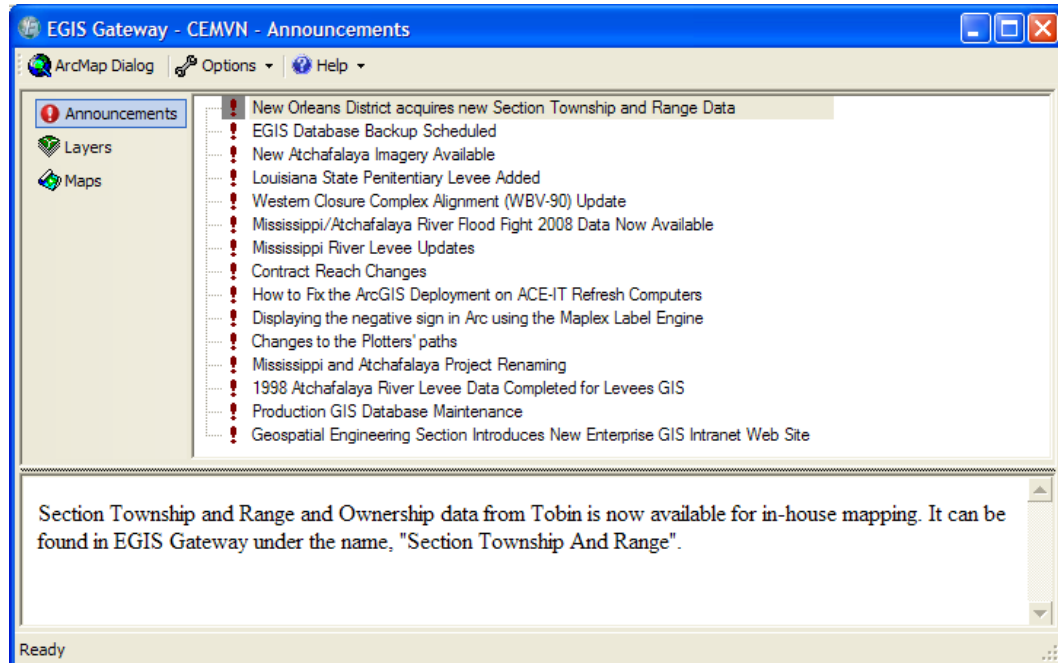




**US Army Corps
of Engineers** ®

New Orleans District



EGIS Gateway User Guide

EGIS001

Sam Falchook
Contractor

Software & Scanning Services
Samuel.I.Falchook@usace.army.mil
862-2113

Version 3.0 (For ArcGIS 10)

March 12, 2013

1 Overview

EGIS Gateway is an ArcMap application which advertises available GIS data layers and maps. The purpose of the tool is to inform users of new developments in the enterprise GIS database and other available advertised databases.

EGIS Gateway displays a dialog that lists a catalog of GIS data layers, maps, and announcements describing new additions to these items that have become available since the last ArcMap activation. EGIS Gateway offers an array of predefined map layers that provide access to live GIS data presented with standardized symbolization and labeling options. Layers are classified in a taxonomy according to conceptual groupings. GIS layers, metadata, and map documents are directly accessible through EGIS Gateway.

2 How to Access EGIS Gateway From the ArcMap Startup Dialog

EGIS Gateway is available from the ArcMap startup dialog. The ArcMap startup dialog pops up automatically every time you double click on the ArcMap icon on your desktop, or click on the ArcMap icon on the Start menu (Start>All Programs>ArcGIS>ArcMap). (Figure 1)

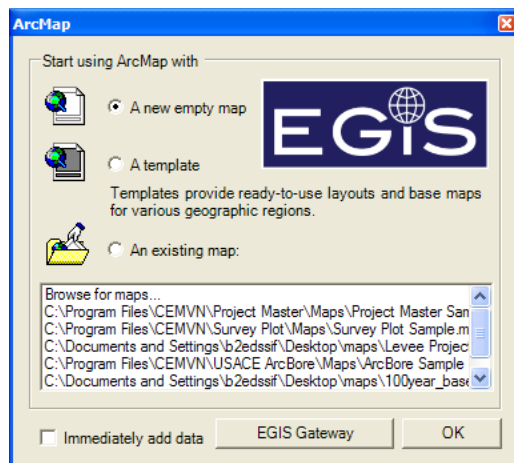


Figure 1: ArcMap Startup dialog

The ArcMap startup dialog has been replaced with a custom startup dialog. It has an **EGIS Gateway** button that will open the EGIS Gateway dialog. Click the **EGIS Gateway** button to launch **EGIS Gateway** (Figure 2).

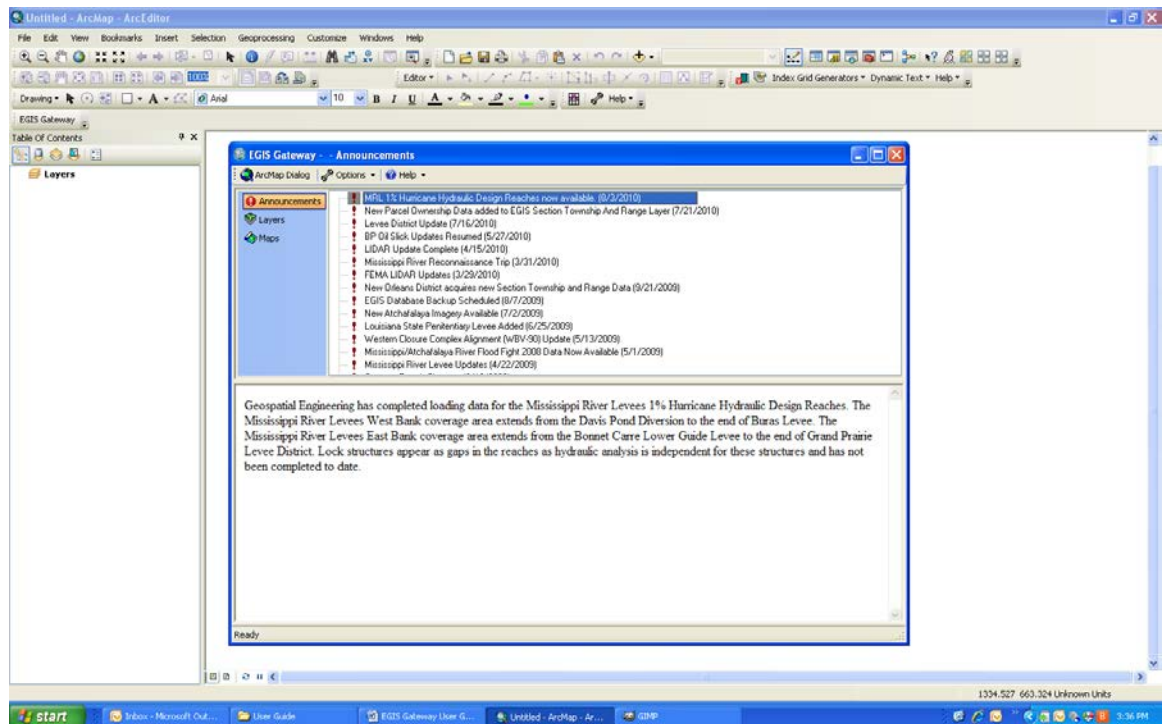


Figure 2: EGIS Gateway in a new map document

If any new content has been added to EGIS Gateway since your last visit, a dialog will appear informing you that new items were found (Figure 3). Items that are new will appear in bold.

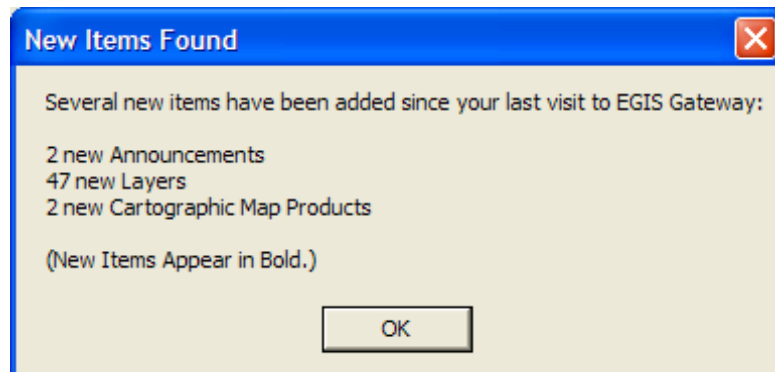


Figure 3: “New Items Found” dialog

To return to the ArcMap Startup Dialog, click on the **ArcMap Dialog** button at the top of EGIS Gateway.

3 How to Access EGIS Gateway From Existing Maps

The ArcMap startup dialog does not pop up automatically when you double click on an existing map document. EGIS Gateway can also be accessed from the EGIS Gateway toolbar. Right-click anywhere on the ArcMap toolbar area to see a list of toolbars (Figure 4). Select “USACE EGIS Gateway Toolbar” from the list of toolbars. You will now see a floating EGIS Gateway toolbar (Figure 5).

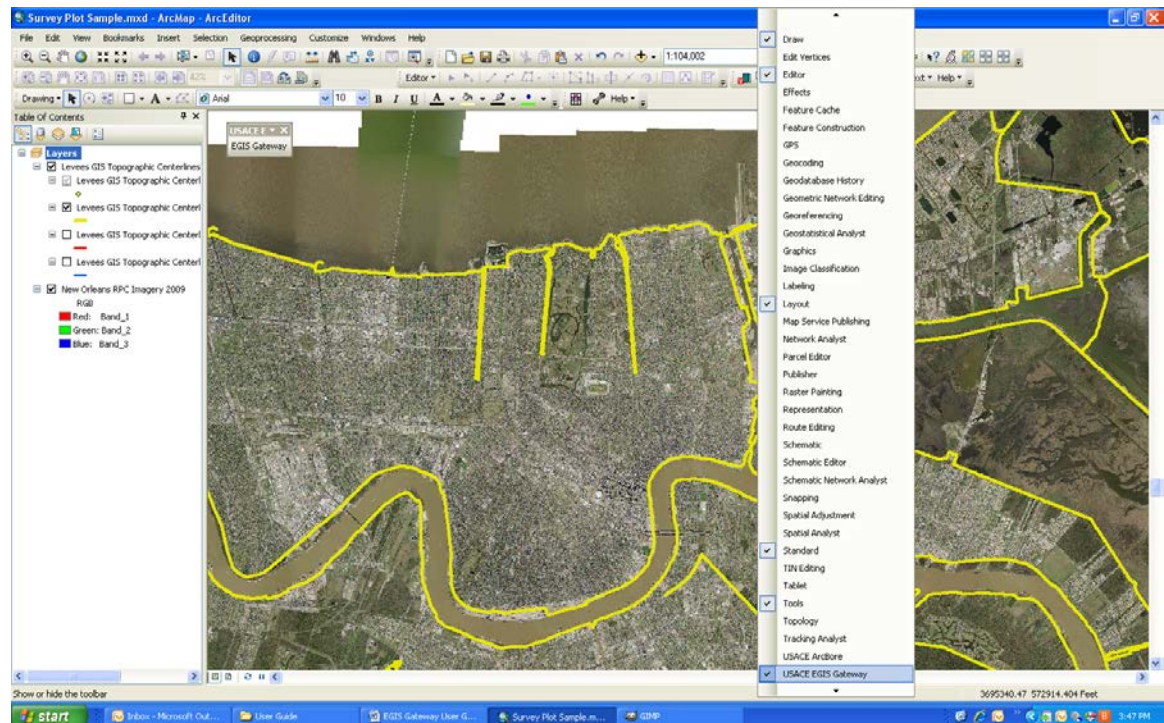


Figure 4: List of ArcMap Toolbars

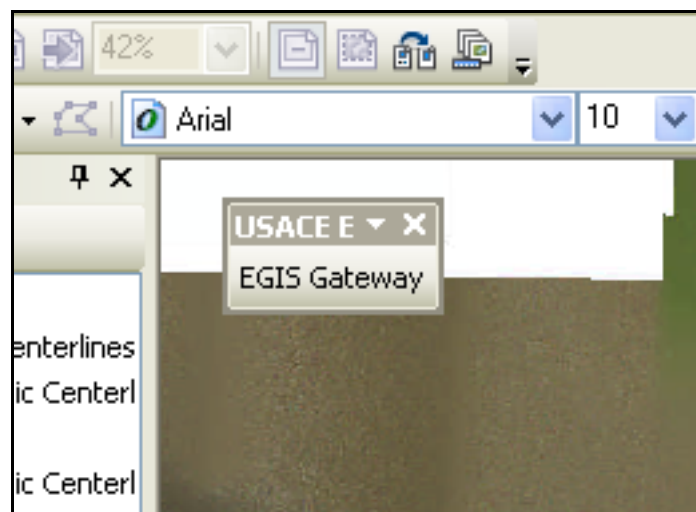


Figure 5: Floating EGIS Gateway toolbar

Drag and drop the EGIS Gateway toolbar to the toolbar area to dock it (Figure 6).

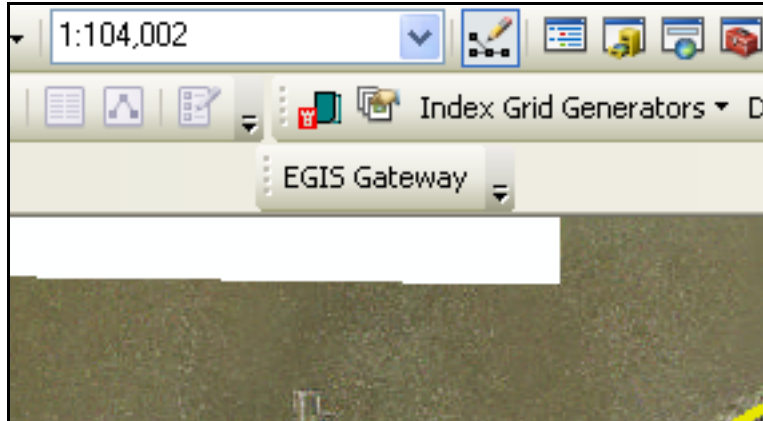


Figure 6: EGIS Gateway toolbar docked in toolbar area

Click on the “**EGIS Gateway**” button on the EGIS Gateway toolbar to launch EGIS Gateway (Figure 7).

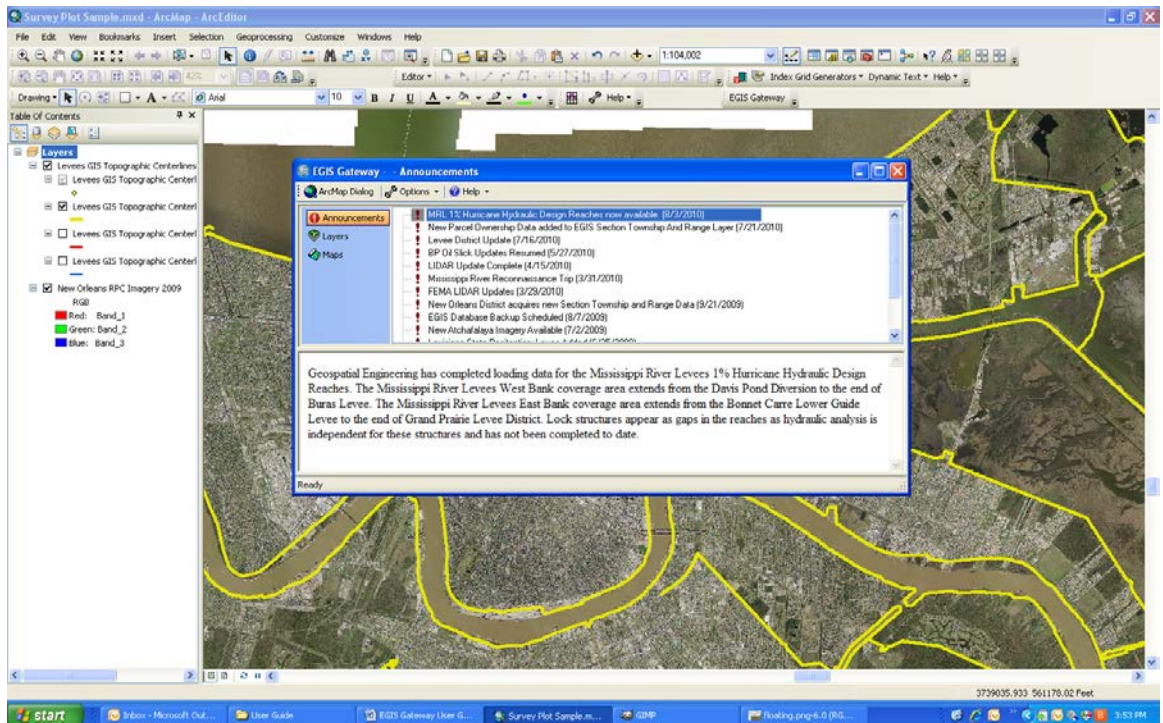


Figure 7: EGIS Gateway in an existing map document

4 Announcements

When EGIS Gateway first starts up, it may take a few moments to load the content. EGIS Gateway will load Announcement, Layers, and Maps, in that order. As the content finishes loading, the Announcements, Layers, and Maps buttons will become enabled and will light up.

When the Announcements content finishes loading, EGIS Gateway shows a list of Announcements.

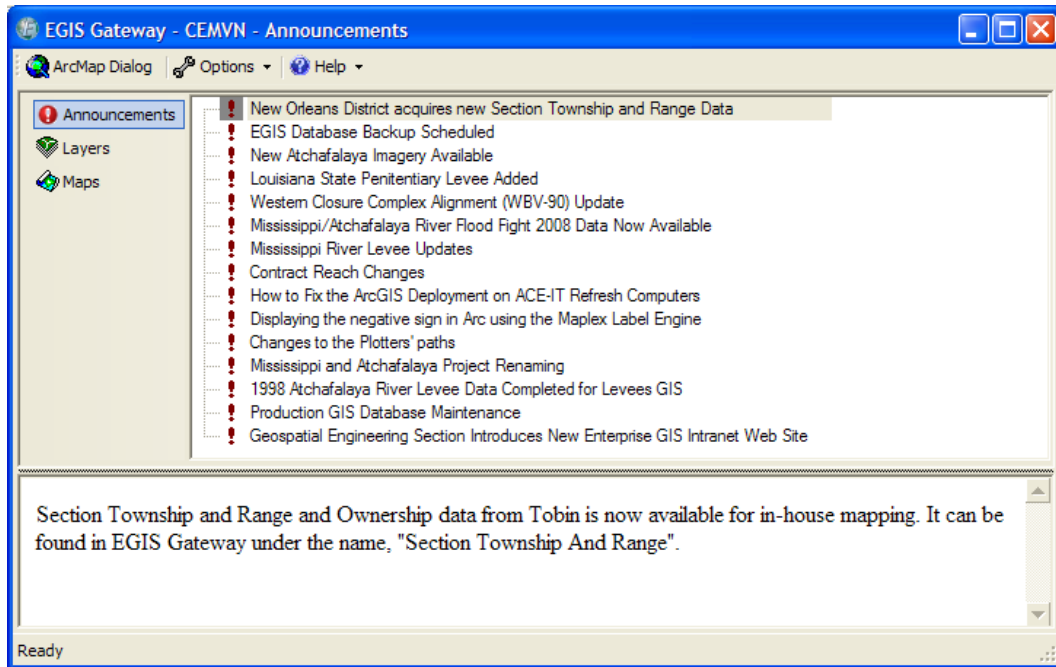


Figure 8: Announcements list

Click on an announcement to view it. The announcement is displayed in the box in the lower part of the window.

You can click and drag on the border between the lower half of the window and the upper half of the window to resize the window panels.

Layers

Click on the **Layers** button to view a list of map layers (Figure 9).

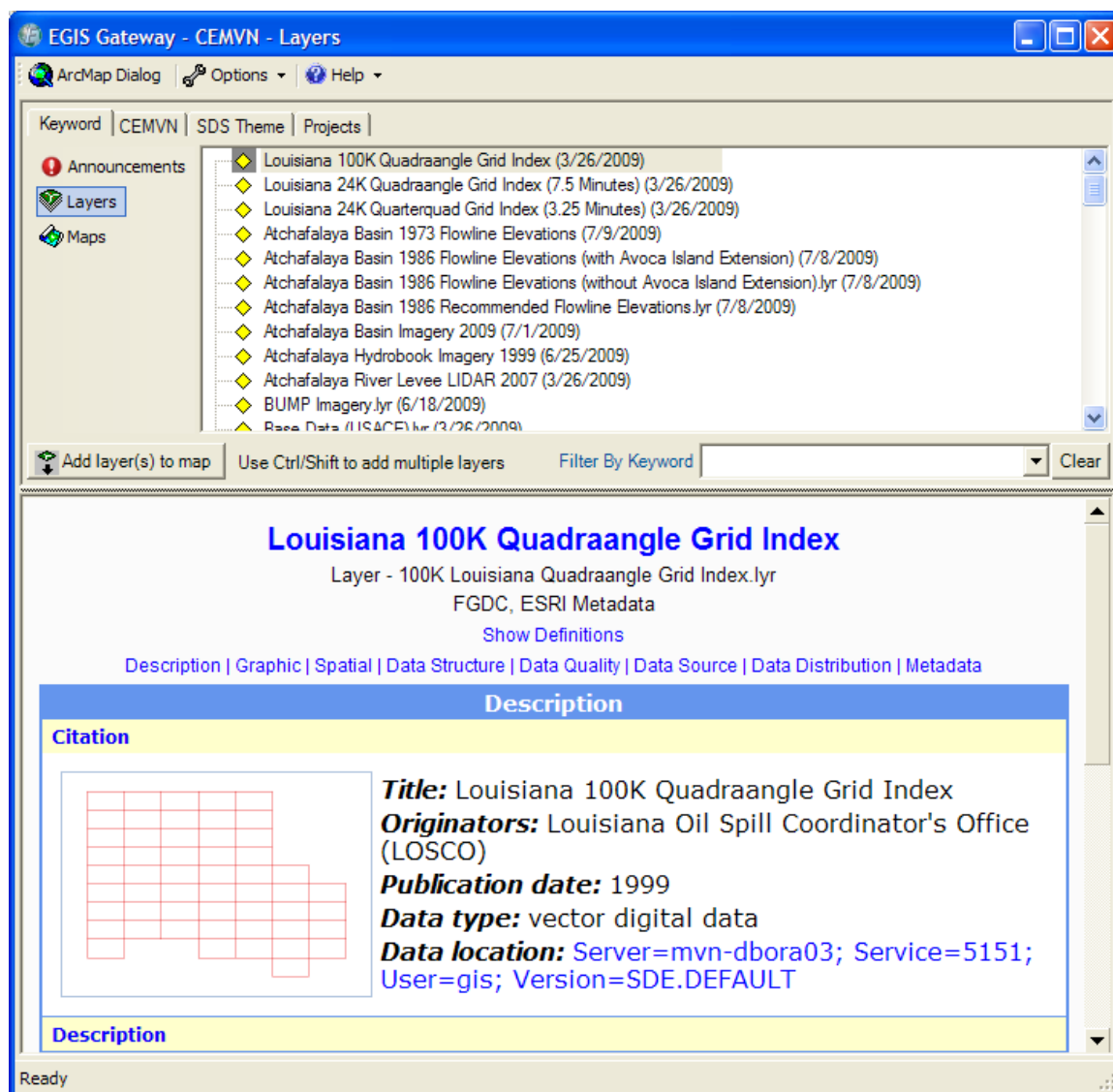


Figure 9: Layers list.

Click on a layer once to view it. The lower half of the window contains FGDC metadata about the map layer. **Metadata** is information about the map layer, including when it was collected, the purpose of the layer, who collected it, etc. **FGDC** is the Federal Geographic Data Committee metadata standard.

You can click and drag on the border between the lower half of the window and the upper half of the window to resize the window panels.

Double click on a layer to add it to the map. Notice that the layer now appears in the map's table of contents (Figure 10).

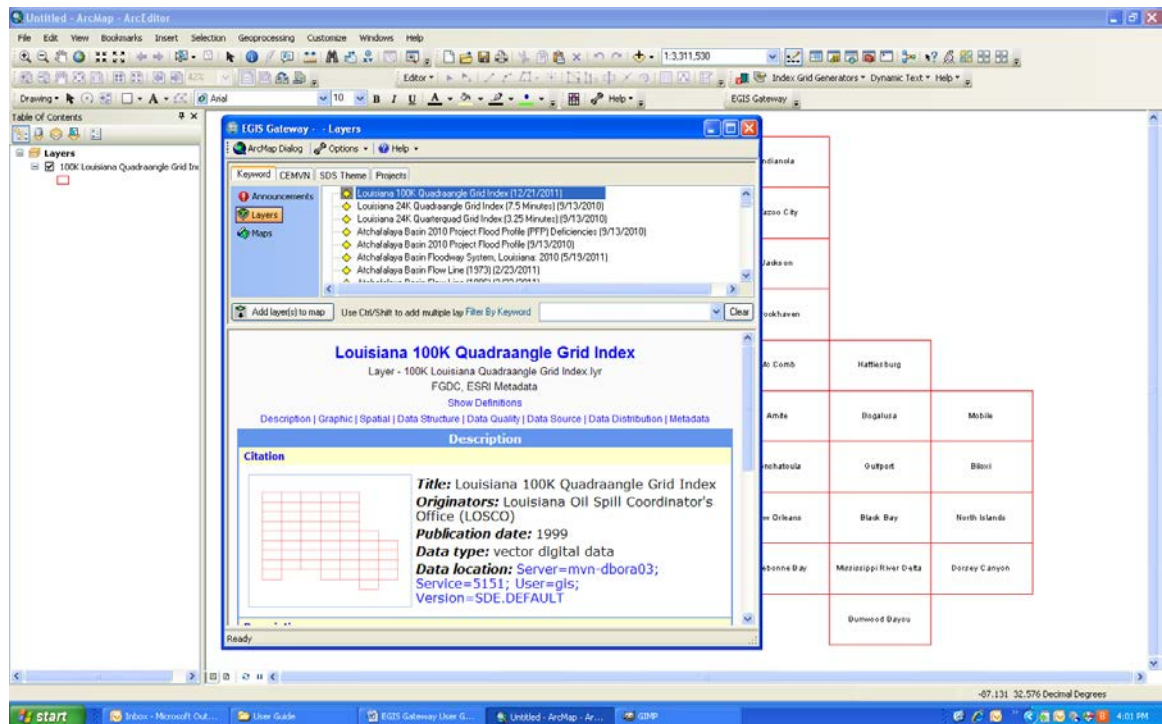


Figure 10: A Layer was added to the map.

Multiple layers can be added to the map simultaneously. Hold down the **Ctrl** key to select multiple layers. Or, hold down the **Shift** key to select a range of layers. Then, click the **Add Layer(s) to map** button to add them to the map (Figure 11).

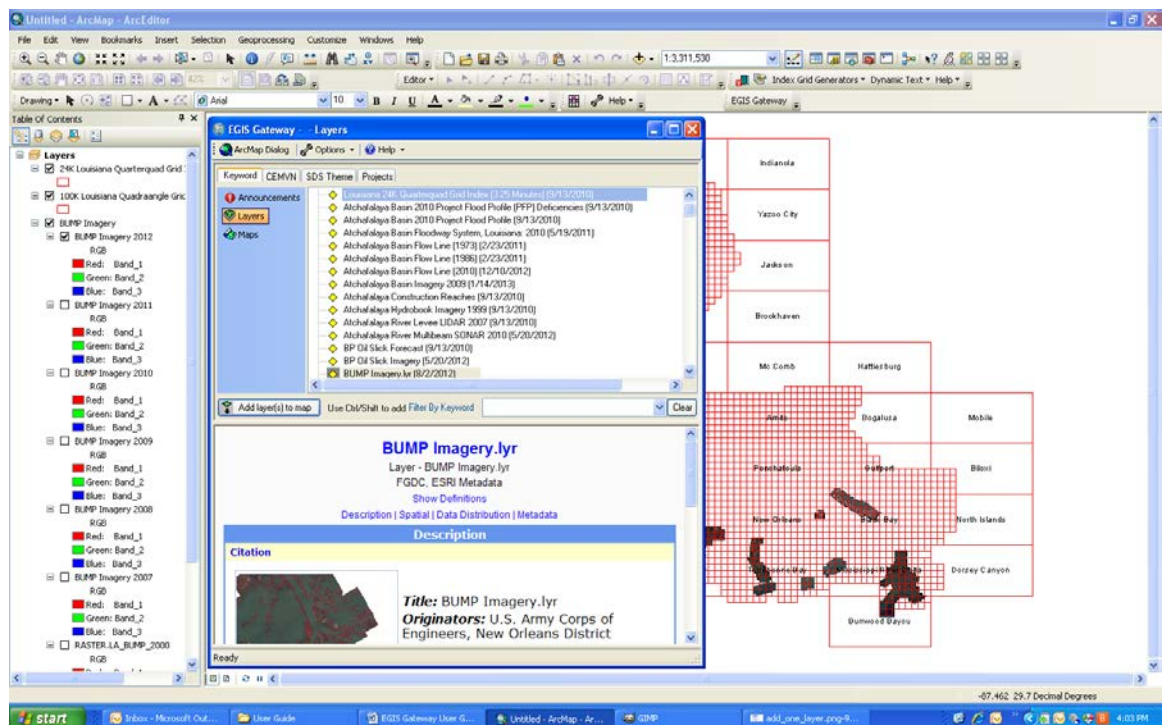


Figure 11: Multiple layers were added to the map simultaneously.

Layers can be filtered by keyword. In the **Filter by Keyword** combo box, type in a keyword or select a keyword from the dropdown list. Now only layers with the matching keyword are displayed (Figure 12). Click **Clear** to display all of the layers again.

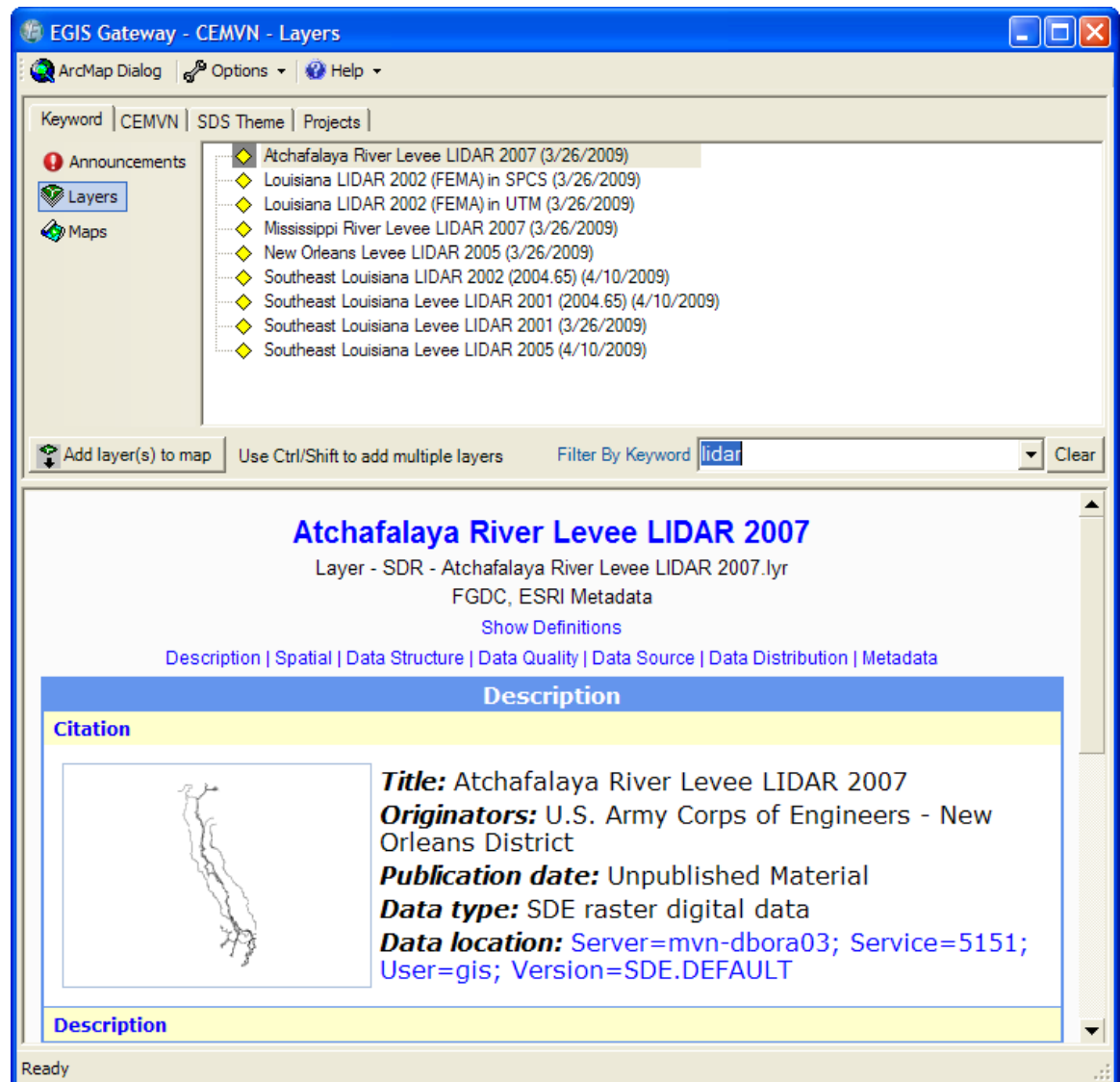


Figure 12: List of layers filtered by keyword

Layers can be grouped into hierarchies. Three hierarchies are available at the time of this writing: **CEMVN**, **Projects**, and **SDS Themes**.

Click on the **CEMVN** tab to view the **CEMVN** hierarchy (Figure 13). The **CEMVN** hierarchy classifies layers based on the office(s) that use the layer. Since many layers are used by more than one office, these layers will appear more than once in the **CEMVN** hierarchy.

Notice that hierarchical groups appear as red circles. To display the contents of a group, click the plus symbol next to the red circle or double click on the group. Individual layers appear as yellow diamonds.

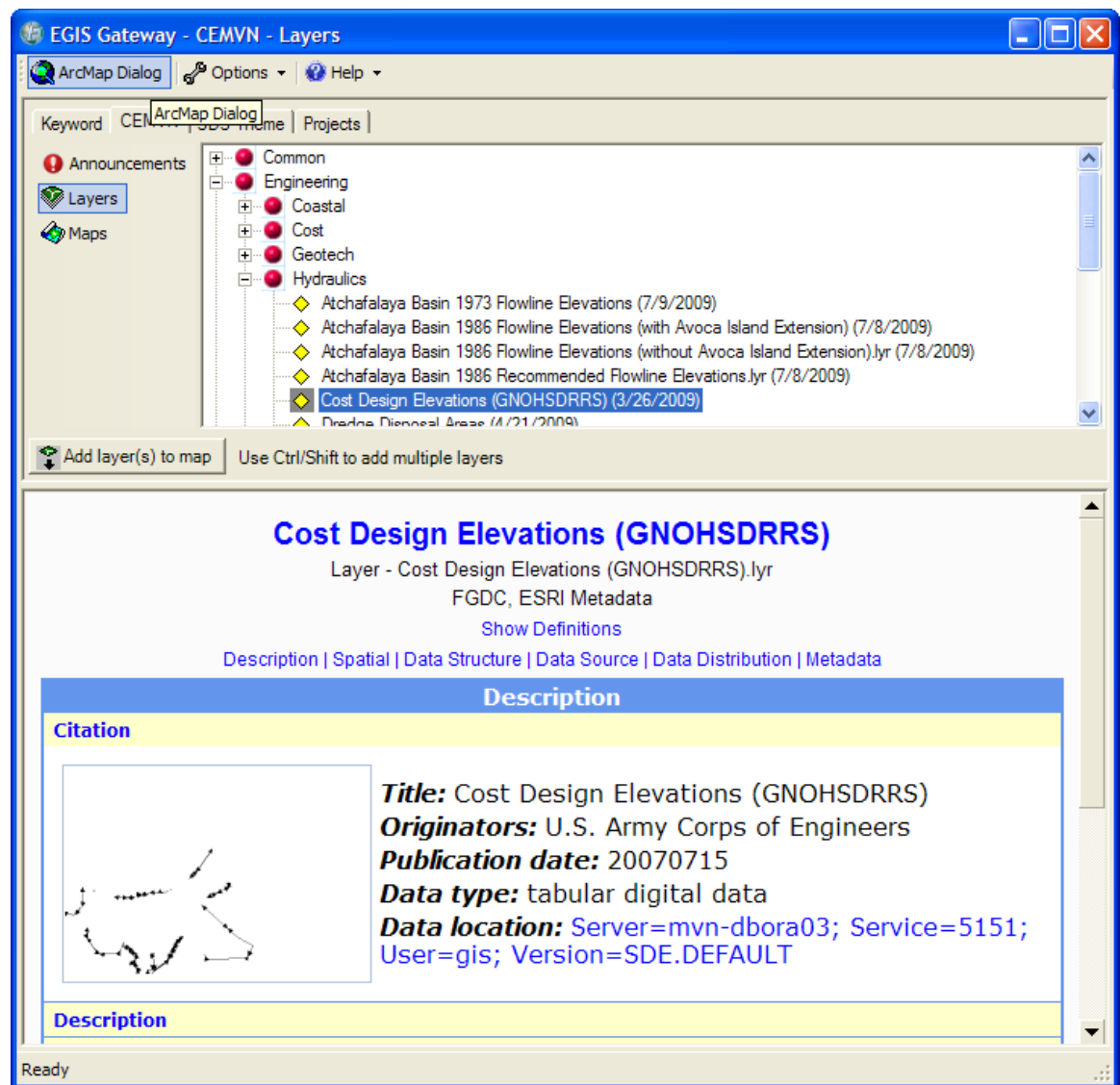


Figure 13: The CEMVN hierarchy

Click on the **Projects** tab to view the **Projects** hierarchy (Figure 14). The **Projects** hierarchy classifies layers based on which project(s) they intersect. Since some layers intersect more than one project, these layers appear more than once in the **Projects** hierarchy.

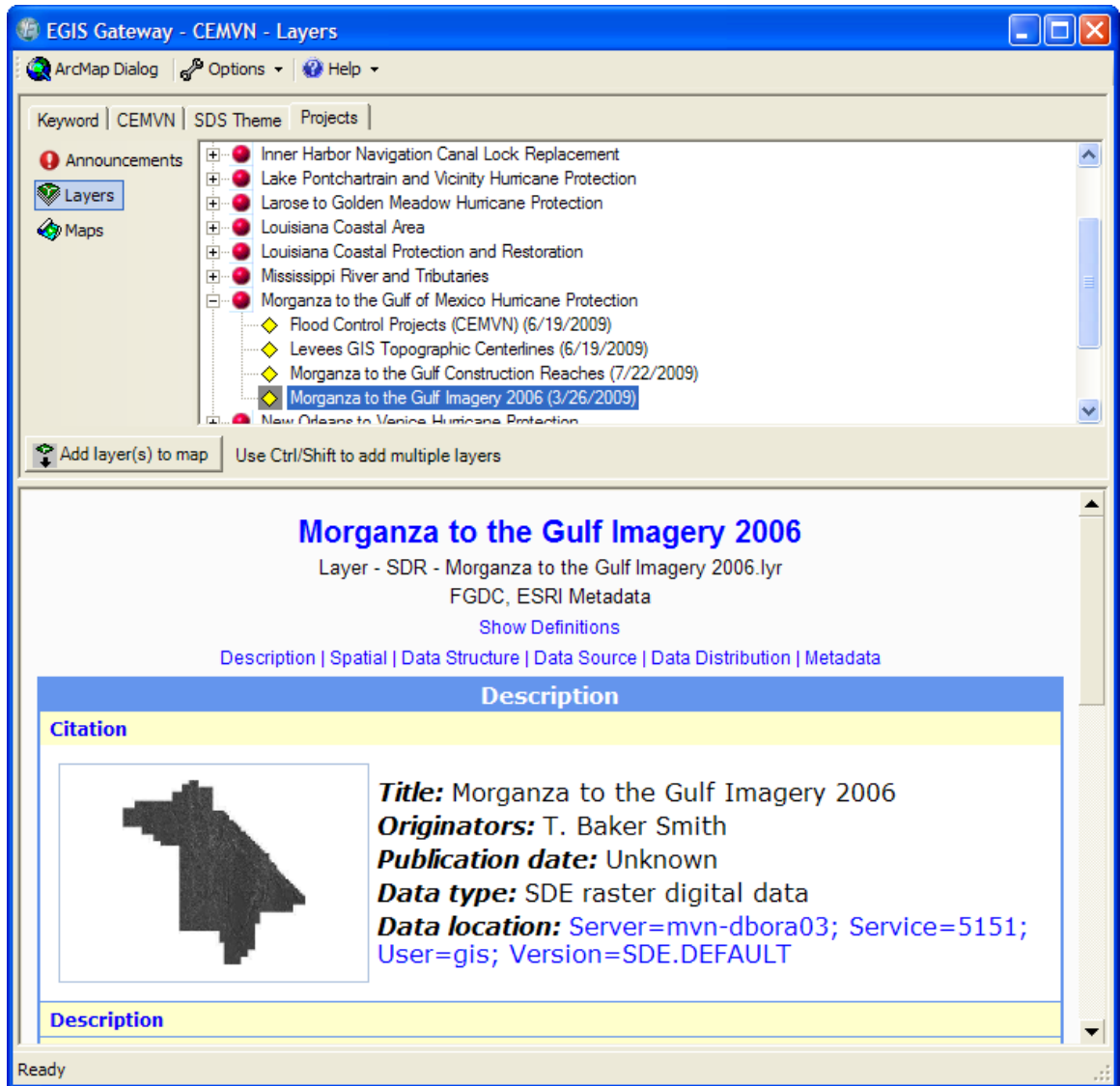


Figure 14: The Projects hierarchy

Click on the **SDS Theme** tab to view the **SDS Theme** hierarchy (Figure 15). **SDS** is a thematic hierarchy that is a standard for the US Army Corps of Engineers. Our **SDS Theme** hierarchy is based on the official SDSFIE hierarchy. SDS is a nested hierarchy. For example, the Transportation classification is further divided into Railroad, Vehicle, and Water classifications. Layers may be associated to multiple SDS Themes. These layers appear more than once in the **SDS Theme** hierarchy.

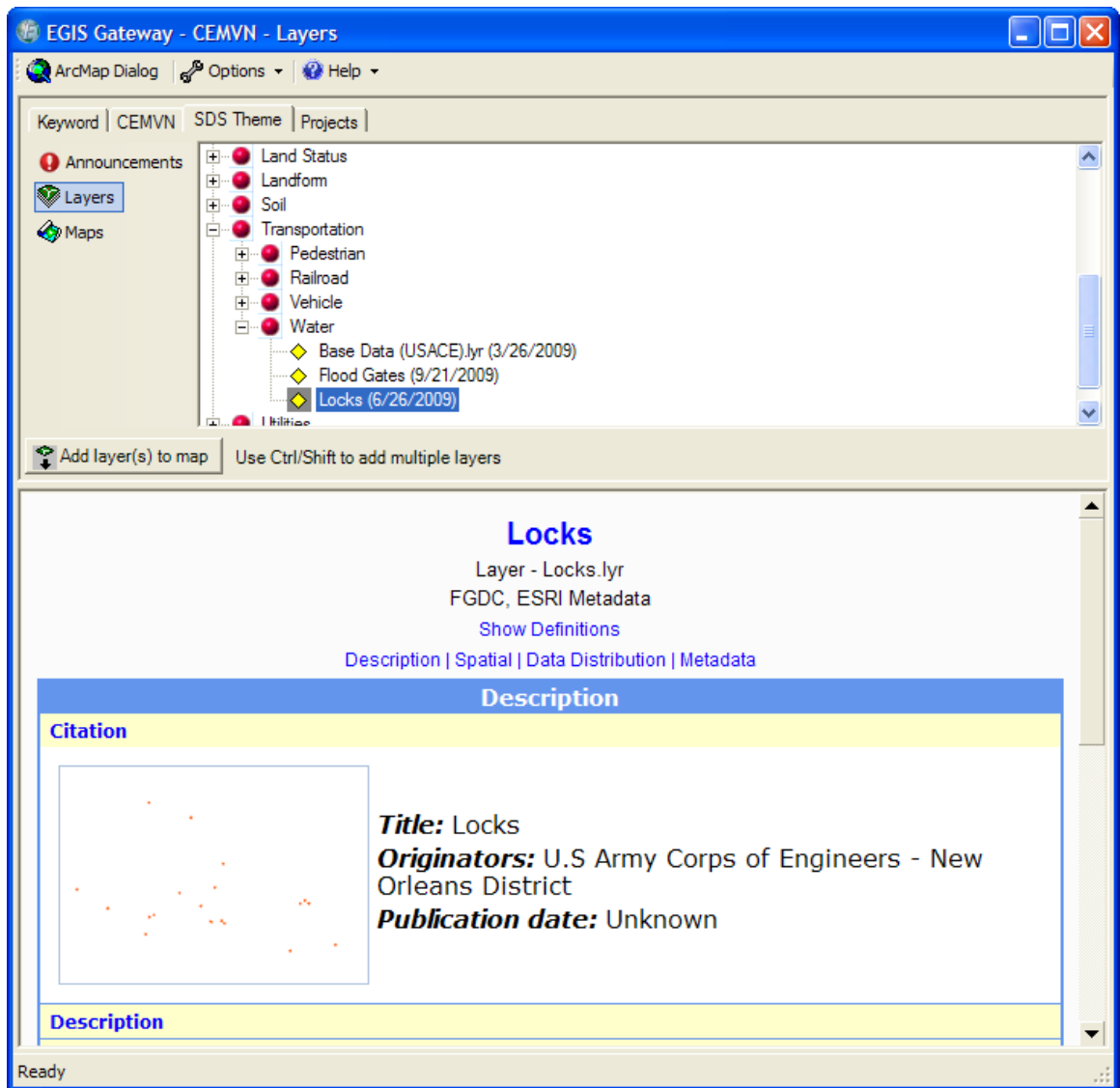


Figure 15: The SDS Theme hierarchy

Click on the **Keyword** tab to return a list of all layers or to filter by a keyword.

5 Maps

Click the **Maps** button to view a list of map documents (Figure 16). These are ArcMap map documents, in .MXD format. Map documents pull data from various sources including databases, shapefiles, and personal GeoDatabases. These maps can be viewed directly in the current ArcMap session.

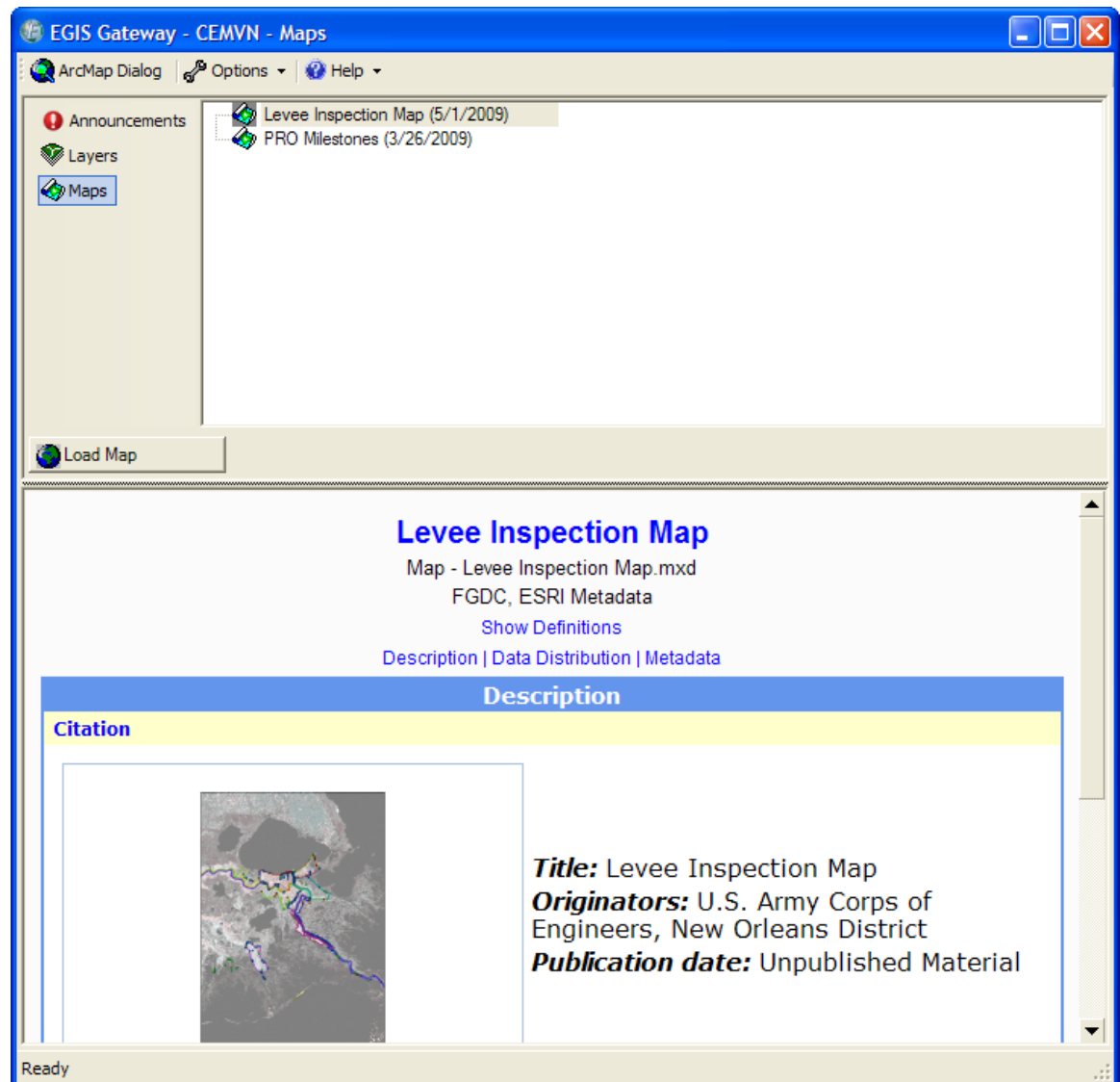


Figure 16: List of Maps

Click a map once to view its metadata. The lower half of the window contains metadata about the map.

You can click and drag on the border between the lower half of the window and the upper half of the window to resize the window panels.

Double-click on a map to open it in the current ArcMap session (Figure 17). Or, click once on the map and then click the **Load Map** button.

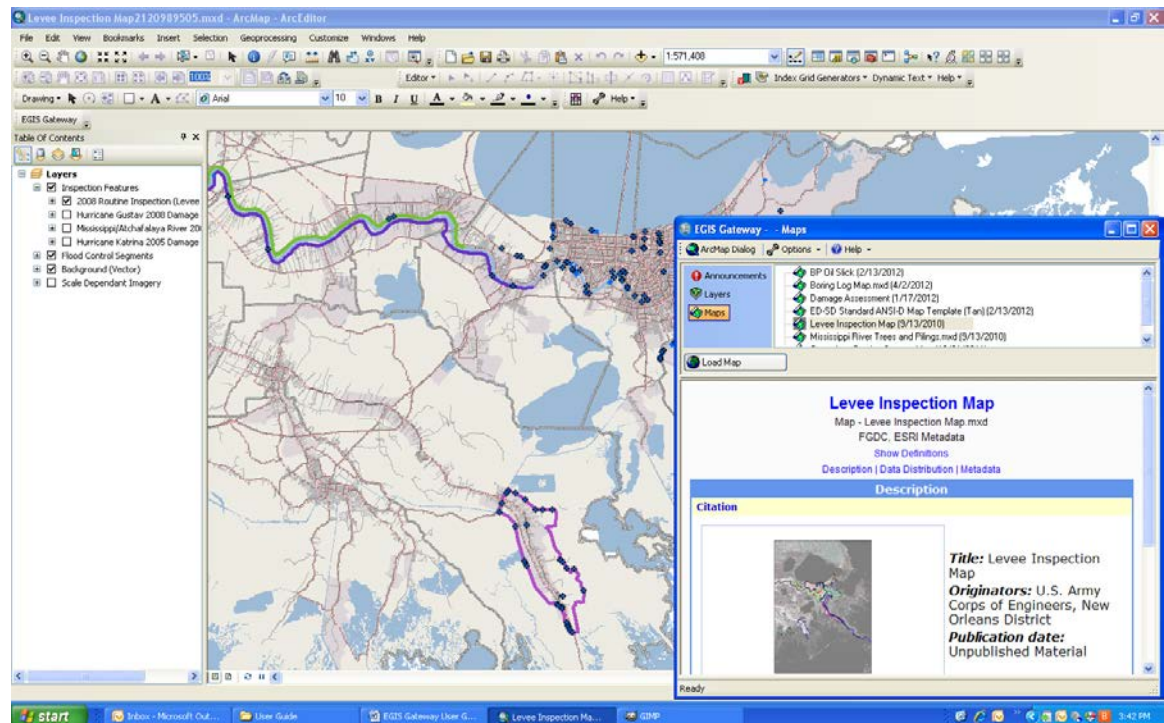


Figure 17: Map Document Loaded From EGIS Gateway

If the current map has changes that were not saved, ArcMap will ask if you wish to save the current map before opening the new map (Figure 18).

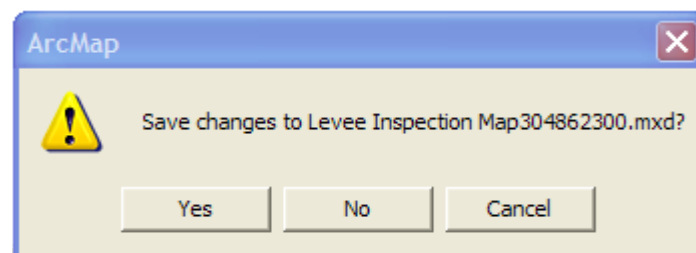


Figure 18: ArcMap prompt to save changes to the current map

The newly opened map is stored in a temporary map document that will be destroyed when the ArcMap session ends. To save the newly opened map, click **Save As...** on the **File** menu. Choose a location to save the map document and choose a meaningful name for the map document (Figure 19).

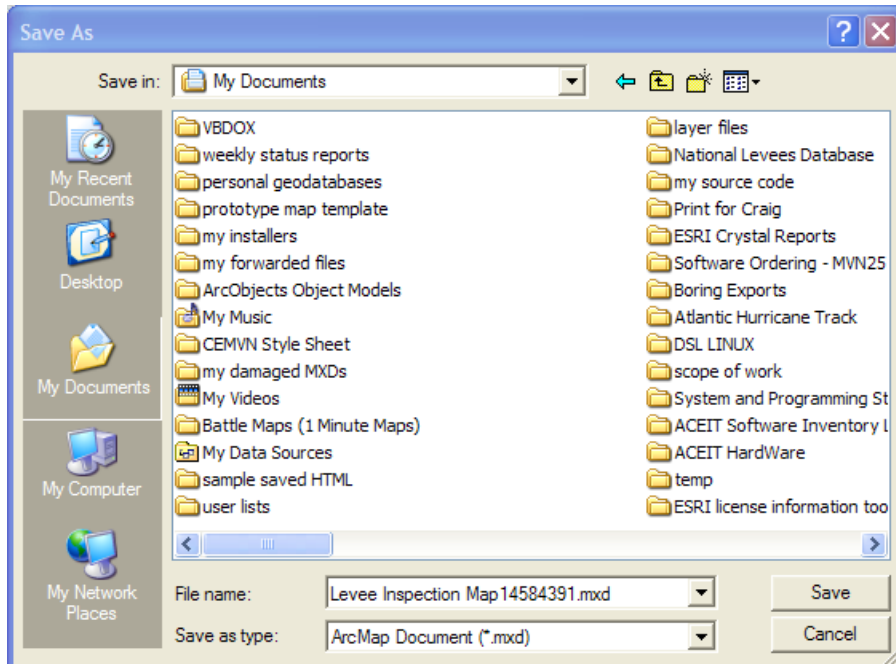


Figure 19: Choose a file name and folder location to save the map document.

6 Options Menu

The options menu (Figure 20) contains a **Servers** menu and the **Refresh Content** button.

Click the **Refresh Content** button to refresh the lists of Announcements, Layers, and Maps. This will come in handy when you want to add that brand new layer that was created this morning, but you do not want to restart your ArcMap session. Or, if EGIS Gateway previously failed to load the Announcements, Layers, and Maps on Startup of ArcMap, click this button to try again.

The **Servers** menu contains a list of servers that feed out content to EGIS Gateway. EGIS Gateway can be used to view content from other districts or divisions. At first, your district server will be selected. Click on a different server from the list, and EGIS Gateway will load Announcements, Layers, and Maps from that server. Announcements, Layers, and Maps are the three channels supported by EGIS Gateway. If the server that you selected does not have one of these channels, then its corresponding button will be disabled and will not light up.

EGIS Gateway will remember which server you selected last and will select that server automatically the next time that you use EGIS Gateway.

7 Help Menu

EGIS Gateway has a help menu (Figure 21). The help menu has two buttons: **About** and **User Guide**.

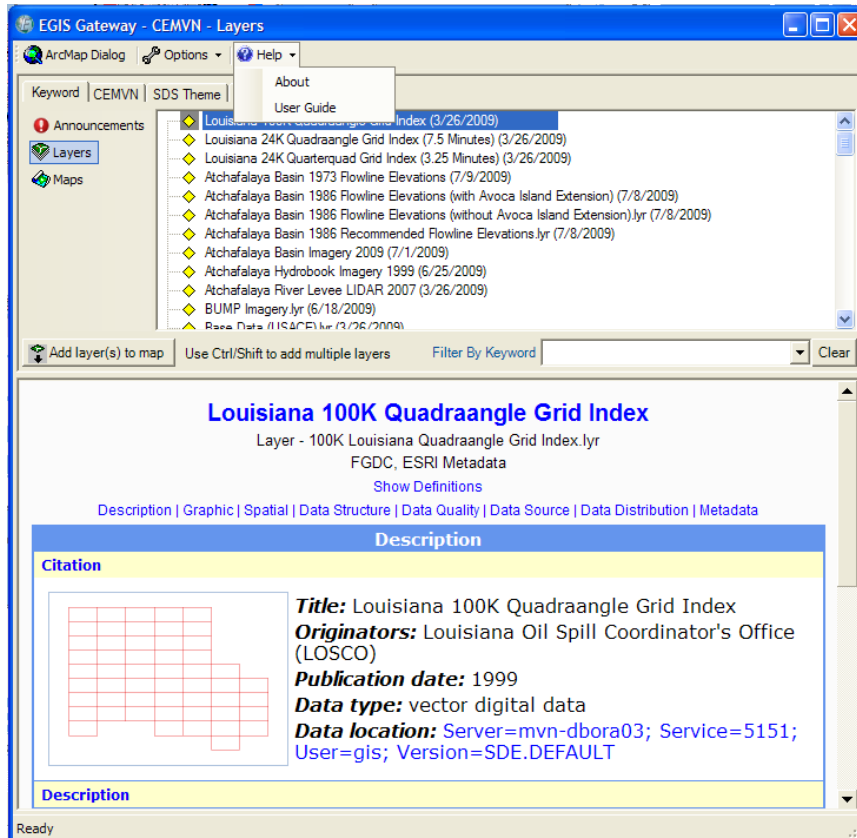


Figure 21: Help Menu

Click the **About** button to read some information about the EGIS Gateway tool (Figure 22). Click the **User Guide** button to view this user guide.



Figure 22: About EGIS Gateway

8 Closing EGIS Gateway

To close EGIS Gateway, click the X in the upper right hand corner.

9 Feedback Appreciated

If you have any feedback on how EGIS Gateway can be improved, or if you would like to sponsor additional development work or layer production, please do not hesitate to contact me.

Sam Falhook
Contractor
Software & Scanning Services
Samuel.I.Falhook@usace.army.mil
(504)-862-2113