

PUBLIC NOTICE

June 7, 2021

United States Army
Corps of Engineers
New Orleans District
Attn: Regulatory Branch, ODR-W
7400 Leake Ave.
New Orleans, Louisiana 70118-3651

Project Manager:
Darlene Herman
(504) 862-2287
Darlene.C.Herman@usace.army.mil
Application #: MVN-2021-0517 WB

Interested parties are hereby notified that a permit application has been received by the New Orleans District of the U.S. Army Corps of Engineers pursuant to: [**X**] Section 10 of the Rivers and Harbors Act of March 3, 1899 (30 Stat. 1151; 33 USC 403); and/or [] Section 404 of the Clean Water Act (86 Stat. 816; 33 USC 1344).

PIPELINE ABANDONMENT IN GULF OF MEXICO OFF TERREBONNE PARISH

NAME OF APPLICANT: Shell Pipeline Company, LP, Post Office Box 2648, Houston, Texas 77252.

LOCATION OF WORK: Located off Terrebonne Parish, Louisiana, in the Gulf of Mexico, 27.977175, -90.59525, as shown within the attached drawings.

CHARACTER OF WORK: Partial abandonment in-place of an existing 14-inch Gensis Oil Pipeline from GC205 to a SSTI in EW 952 due to decommissioning of Chevron's GC205 A Platform. The pipeline passes through the Gulf Safety Fairway in EW997 and EW953. There will be no activities performed within the Gulf Safety Fairway in association with this partial abandonment. The proposed project does not include discharge of fill material or include wetland impacts or effects to special aquatic sites. The applicant has not proposed to provide compensatory mitigation, as there are no plans to impact wetlands resources through project construction.

The comment period on the requested Department of the Army Permit will close **15 days** from the date of this public notice. Written comments, including suggestions for modifications or objections to the proposed work, stating reasons thereof, are being solicited from anyone having interest in this requested permit, and must be submitted so as to be received before or by the last day of the comment period. Letters and/or comments concerning the subject permit application must reference the applicant's name and the Permit Application Number, and can be emailed to the Corps of Engineers project manager listed above, or forwarded to the Corps of Engineers at the address above, **ATTENTION: REGULATORY BRANCH, ODR-W, "Darlene Herman"**. Individuals or parties may also request an extension of time in which to comment on the proposed work, by mail or by emailing the specified project manager listed

above. Any request for an extension of time to comment must be specific and substantively supportive of the requested extension and received by this office prior to the end of the initial comment period. The Section Chief will review the request and the requestor will be promptly notified of the decision to grant or deny the request. If granted, the time extension will be continuous and inclusive of the initial comment period and will not exceed a total of 30 calendar days.

Corps of Engineers Permit Criteria

The decision whether to issue a permit will be based on an evaluation of the probable impacts, including cumulative impacts of the proposed activity on the public interest. That decision will reflect the national concern for both protection and utilization of important resources. The benefit which reasonably may be expected to accrue from the proposal must be balanced against its reasonably foreseeable detriments. All factors which may be relevant to the proposal will be considered including the cumulative effects thereof; among those are conservation, economics, aesthetics, general environmental concerns, wetlands, historic properties, fish and wildlife values, flood hazards, floodplain values, land use, navigation, shoreline erosion and accretion, recreation, water supply and conservation, water quality, energy needs, safety, food and fiber production, mineral needs, considerations of property ownership and, in general, the needs and welfare of the people.

The U.S. Army Corps of Engineers is soliciting comments from the public, federal, state, and local agencies and officials, Indian Tribes, and other interested parties in order to consider and evaluate the impacts of this proposed activity. Any comments received will be considered by the U.S. Army Corps of Engineers to determine whether to make, modify, condition, or deny a permit for this proposal. To make this decision, comments are used to assess impacts on endangered species, historic properties, water quality, general environmental effects, and other public interest factors listed above. Comments are used in the preparation of an Environmental Assessment and/or an Environmental Impact Statement pursuant to the National Environmental Policy Act. Comments are also used to determine the need for a public hearing and to determine the overall public interest of the proposed activity.

Our initial finding is that the proposed work would neither affect any species listed as endangered by the U.S. Departments of Interior or Commerce, nor affect any habitat designated as critical to the survival and recovery of any endangered species. Based on the Information Planning and Consultation (IPaC) tool for Endangered Species in Louisiana, as signed on January 27, 2020, between the U.S. Army Corps of Engineers, New Orleans and the U.S. Fish and Wildlife Service, it has been determined that the project would have no effect to any listed species.

This notice initiates the Essential Fish Habitat (EFH) consultation requirements of the Magnuson-Stevens Fishery Conservation and Management Act. The applicant's proposal may result in the destruction, alteration, and/or disturbance of 0.0 **acres** of EFH utilized by various life stages of red drum and penaeid shrimp. Our initial determination is that the proposed action would not have a substantial adverse impact on EFH or federally managed fisheries in the Gulf of Mexico. Our final determination relative to project impacts and the need for mitigation measures is subject to review by and coordination with the National Marine Fisheries Service.

Any person may request, in writing, within the comment period specified in this notice, that a public hearing be held to consider this application. Requests for public hearings shall state, with particularity, the reasons for holding a public hearing.

You are invited to communicate the information contained in this notice to any other parties whom you deem likely to have interest in the matter.

Darrell S. Barbara
Chief, Western Evaluation Section
Regulatory Branch

Enclosures

NOTES:

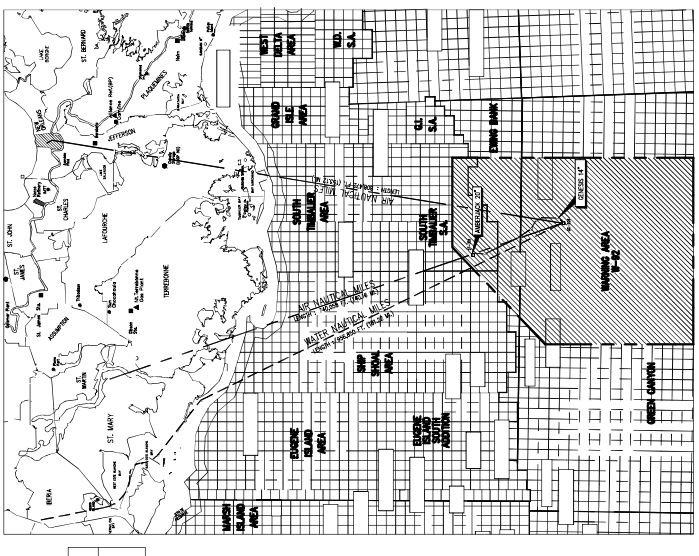
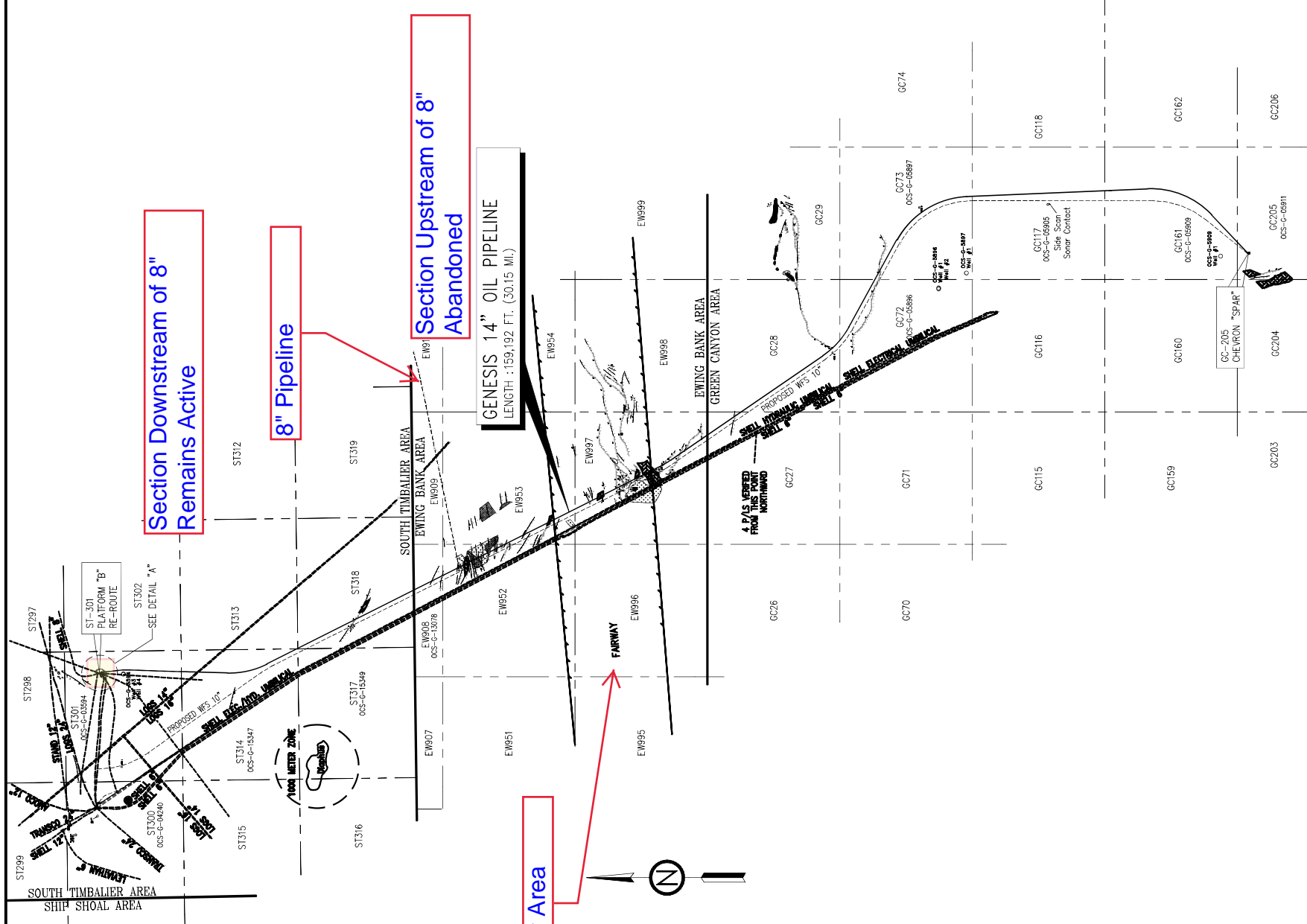
1. SURVEY DATA TAKEN FROM C & C TECHNOLOGIES, ACQUIRED MAY 1-9, 1986, FROM SURVEY VESSELS: P/V ALOHA & M/V RAMBO, FROM GC-205 TO ST-301.
2. REFERENCE SPIC-GOM-AJ-S0100531 FOR AS-BUILT COORDINATES OF ST-301 RE-ROUTE.
3. FOR MORE DETAILS REFERENCE TUBO DRAWINGS 13128908 AND 13128914.

LEGEND:

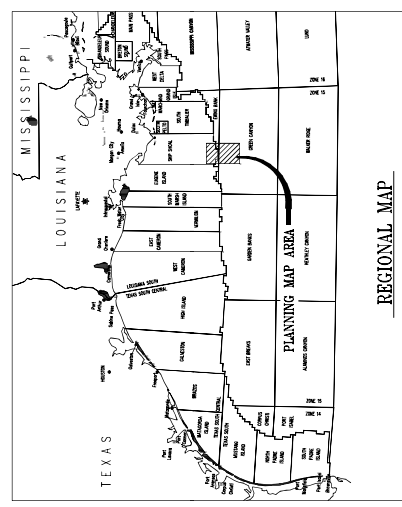
- EXISTING PIPELINES
- PROPOSED PIPELINE
- WELL WITH NO SURFACE FACILITY
- WELL OR STRUCTURE WITH SURFACE FACILITY
- NORMAL FAULT WITH DEPTH OF BURIAL; HACHURES ON DOWNTHROW SIDE
- FAULT SCARP WITH SEAFLOOR DISPLACEMENT; HACHURES ON DOWNTHROW SIDE
- CONCENTRATED SEAFLOOR OUTCROPS EXHIBITING SEAFLOOR RELIEF OF 0'-15'
- ZONES OF CONCENTRATED SEAFLOOR GAS VENTS
- GAS SATURATION ZONE BURIED JUST BELOW THE SEAFLOOR
- AREAS OF HIGHLY FRACTURED OR FAULTED STRATA (MICRO FAULTS)

MAP EXPLANATION

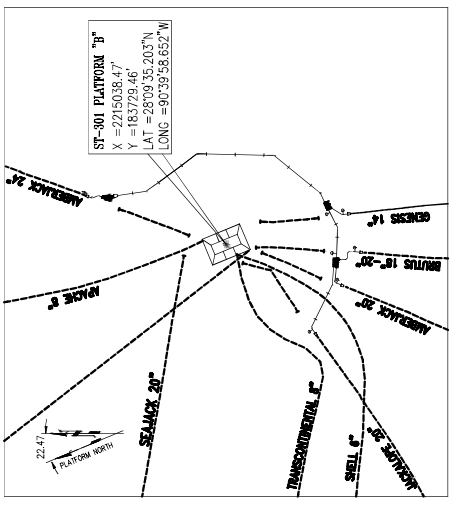
MAP PROJECTION BASED UPON UNIVERSAL TRANSVERSE MERCATOR (ZONE 15). (GRID UNITS IN SURVEY FEET) GEODETIC DATUM: NAD 1927, CLARKE 1866 SPHEROID.



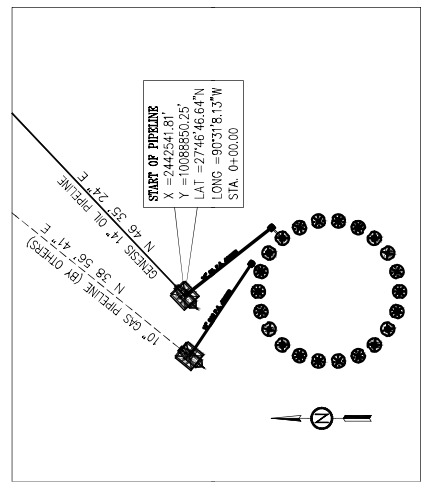
KEY MAP FOR W-92 ZONE



REGIONAL MAP
SCALE IN FEET
0 4000' 8000' 12000' 16000'



DETAIL "A"
ST-301 PLATFORM "B" RE-ROUTE
(NOTES 2 & 3)



GC-205 CHEVRON "SPAR"

OVERALL FIELD LAYOUT
GENESIS FROM GREEN CANYON BLOCK 205
TO SOUTH TIMBALIER BLOCK 301 "B"

SCALE 1" = 8000'	DATE	REV.
FORAN, R. ACREE	08/15	SD - 43150 - 06

AMBERJACK OFFSHORE CRUDE

SHELL OIL PRODUCTS COMPANY
TRANSPORTATION ENGINEERING
HOUSTON, TEXAS

ES. NO.	BY	CHK	DATE	DESCRIPTION OF REVISION
96-062	JMD			ST-301 PLATFORM "B" RE-ROUTE
96-062	RKA	HC		ADD KEY-MAP FOR W-92 ZONE
96-062	RKA	HC		REVISED GC-205 APPROACH AREA
96-062	RKA	HC		REVISED GC-205 TARGET AREA
96-062	RKA	HC		REVISED GC-205 TARGET AREA

REV. NO.	DATE	DESCRIPTION OF REVISION
06	10/20/14	ST-301 PLATFORM "B" RE-ROUTE
05	11/20/97	ADD KEY-MAP FOR W-92 ZONE
04	10/22/97	REVISED GC-205 APPROACH AREA
03	06/20/97	REVISED GC-205 TARGET AREA
02	5/13/97	REVISED GC-205 TARGET AREA

COMMENTS / REMARKS
CAD DRAWING DO NOT REVISE MANUALLY

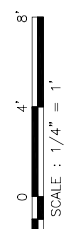
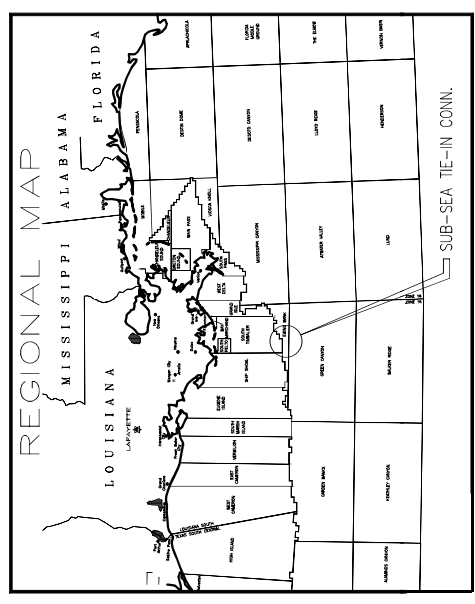
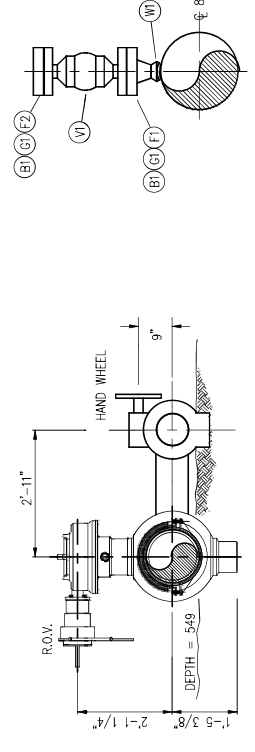
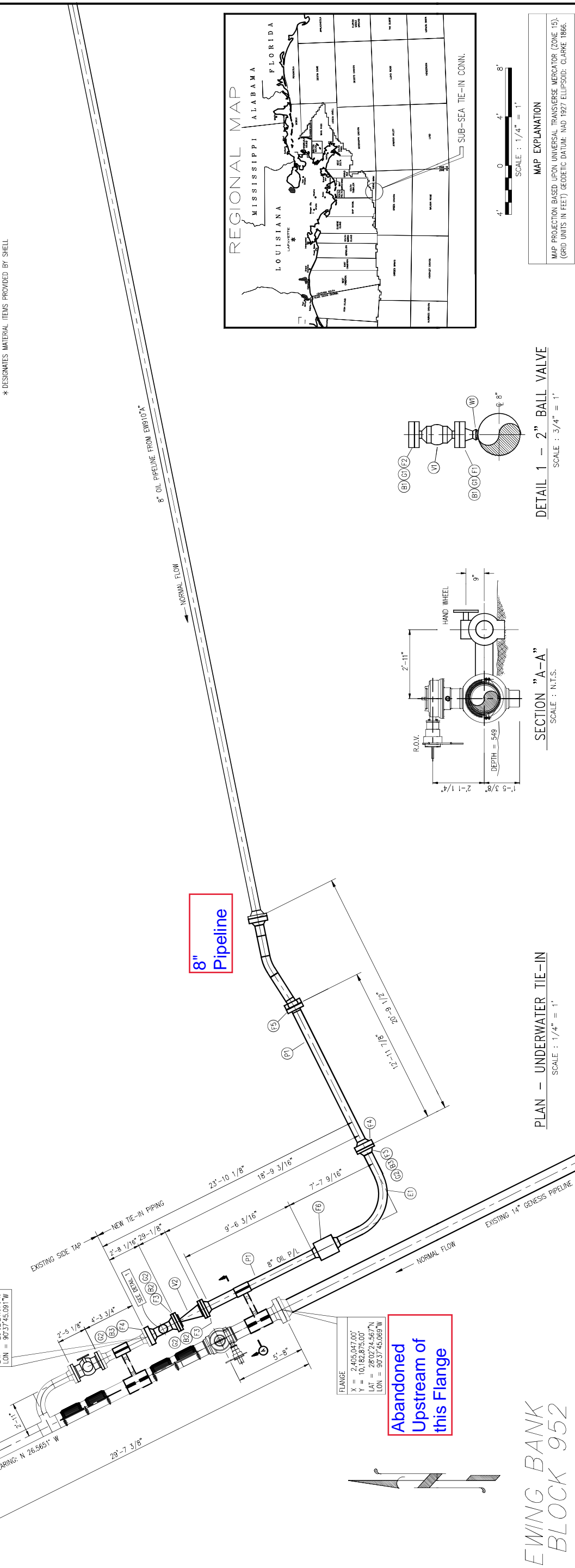
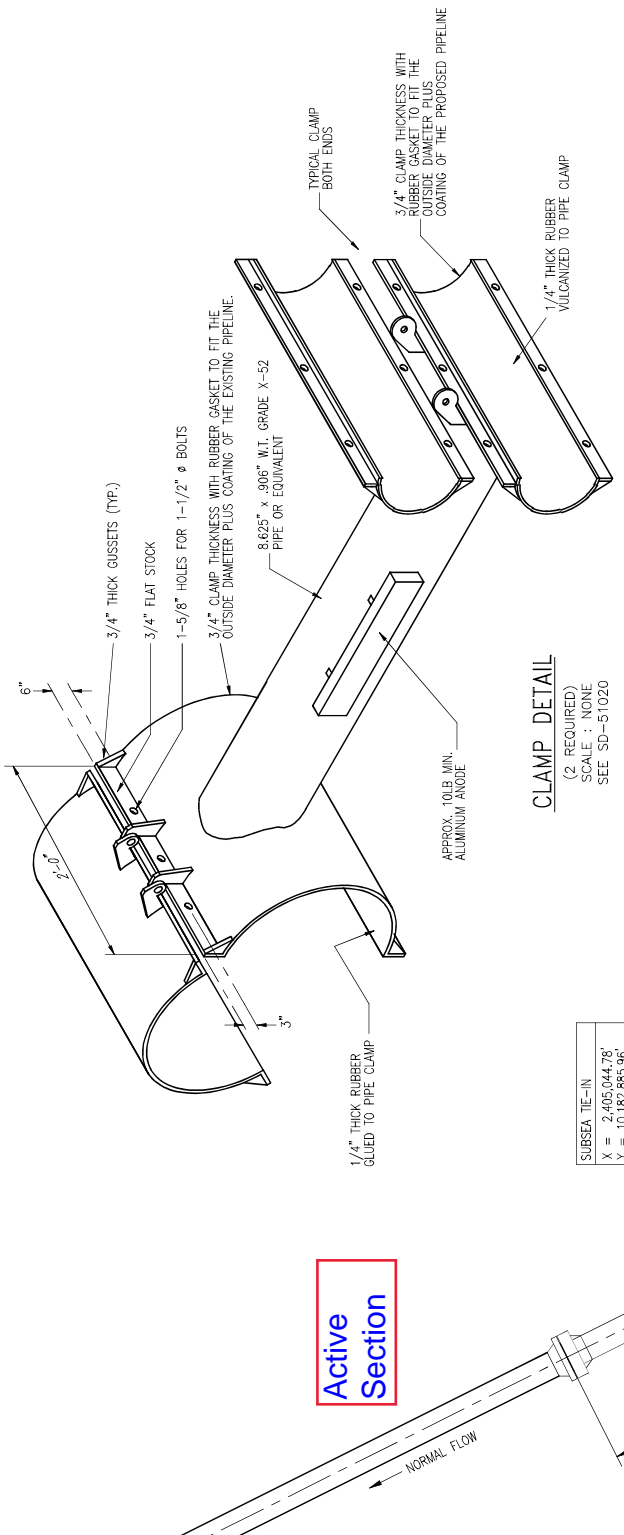
TRANSPORTATION ENGINEERING

BILL OF MATERIAL

ITEM	QTY.	DESCRIPTION
* P1	46	8" x 0.500" W.T. API-5L X42, SMLS. LINE PIPE
* F1	1	2" ANSI 1500# R.T.J. WN. FLANGE, A-105 BORE= 1.503"
* F2	1	2" ANSI 1500# R.T.J. BLIND FLANGE, A-105
* F3	3	8" ANSI 900# R.T.J. WN. FLANGE, A-105 BORE= 7.625"
* F4	3	8" ANSI 900# R.T.J. SWEL FLANGE, GRADE MMS-SP-44, X42 HUB BORE TO MATCH 0.500" WT PIPE
* F5	1	8" ANSI 900# WE x WE HYDROTECH MISALIGNMENT BALL FLANGE, A-694 F42 W/4 FT. PIPE PUPS
* F6	1	8" ANSI 900# HYDROTECH INSULATING JOINT
* V1	1	2" ANSI 1500# RTJ FLANGED BALL VALVE, API 6D
* V2	1	8" ANSI 900# RTJ FLANGED CHECK VALVE
* E1	1	8" x 0.500" W.T. API-5L X42, SMLS, 90° 5D RAD., PIPE IND. BEND W/ 24" TANGENT EA. END
* E2	1	8" x 0.500" W.T. API-5L X42, SMLS, 11.44°, 5D RAD., PIPE IND. BEND W/ 12" TANGENT EA. END
* W1	1	8" x 2" XX STRONG MELDOLLET, A-105 BORE 1.503"
* G1	2	2" ANSI 1500# CARBON STEEL OCTAGONAL RING GASKET (R24) (2" - 1500#)
* G2	5	8" ANSI 900# CARBON STEEL OCTAGONAL RING GASKET (R49) (8" - 900#)
* B1	16	7/8" x 6.0" LG. STUD BOLT, A-193 GR. B7 W/ (2) H. HEX NUTS EACH, A-194-2H (2" - 1500#)
* B2	24	1-3/8" x 14-5/8" LG. STUD BOLT, A-193 GR. B7 W/ (2) NUTS EACH (DRILLED FOR "TOMMY" BAR, A-194-2H (8" - 900#)
* B3	36	1-3/8" x 16-5/8" LG. STUD BOLT, A-193 GR. B7 W/ (2) NUTS EACH (DRILLED FOR "TOMMY" BAR, A-194-2H (8" - 900#)

* DESIGNATES MATERIAL ITEMS PROVIDED BY SHELL

- NOTES:**
- PIPING SYSTEMS SHALL BE IN ACCORDANCE WITH ANSI B31.4 AND D.O.T. 195. ALL WELDING SHALL BE IN ACCORDANCE WITH API 1104, API 1107, AND ANS/AWS D1.1.
 - ALL WELDS ARE FITTING TO FITTING UNLESS OTHERWISE DIMENSIONED.
 - ALL FITTINGS AND VALVES SHALL BE FULL OPENING AND THROUGH CONDUIT TYPE.
 - STUD BOLTS AND NUTS SHALL BE FLUOROCARBON COATED.
 - HYDROTEST PRESSURE (MIN. 2720 PSI, MAX. 2620) FOR THE MANIFOLD SHALL BE MAINTAINED FOR 30 MINUTES BEFORE THE INSULATING JOINTS ARE ASSEMBLED. AFTER COMPLETED ASSEMBLY, INSULATING JOINTS SHALL BE HYDROTESTED WITH THE SAME PRESSURES. AN 8 HOUR HYDROTEST SHALL BE HELD WITH THE SAME PRESSURES.
 - THE SUBSEA MANIFOLD ASSEMBLY INCLUDING ALL FITTINGS AND VALVES SHALL BE PAINTED WITH TWO COATS OF COOK'S SHELLCOAT 962 COLD CURED EPOXY.
 - REMOVE EXISTING 14" SPOOL (30' LG. WITH SWEL FLANGES ON BOTH ENDS), INSTALL 14" BALL VALVE (V-3), REMOVE 4" O.D. PROTECTION FRAME AND SIDE TAP STRUCTURAL SUPPORT. REPOSITION MODIFIED SPOOL WITH SIDE POINTING SOUTH AND HORIZONTAL TO SEA BED. SEE REFERENCE DRAWINGS: A-72-75-01, A-72-75-02, AND A-72-75-03.
 - BALL VALVE (V-1) SHALL BE INSTALLED IN THE CLOSED POSITION. NEW BALL VALVE (V-3) AND EXISTING 8" SIDE TAP BALL VALVE TO BE INSTALLED IN THE OPEN POSITION. 8" CHECK VALVE (V-2) SHALL BE INSTALLED "PINKED OPEN".



MAP EXPLANATION
MAP PROJECTION BASED UPON UNIVERSAL TRANSVERSE MERCATOR (ZONE 15). (GRID UNITS IN FEET) GEODETIC DATUM: NAD 1927 ELLIPSOID: CLARKE 1886.

AMBERJACK 8" OIL PIPELINE

REV. NO.	DATE	BY	APP.	DESCRIPTION OF REVISION
04	08/03/98			REVISED SIDE TAP ASSEMBLY
				GENERAL REVISIONS
				ADDED DIMENSIONS - REVISED MATERIAL LIST
				ROTATED SIDE TAP
				ORIGINAL ISSUE

ES NO. BY DATE

EQUILON
PIPELINE COMPANY LLC

RAT	ES NO.	BY	APP.	DATE	DESCRIPTION OF REVISION
97-112	MM			06/98	
97-112	MM			07/98	
97-112	MM			07/98	
97-112	MM			06/98	

PLAN AND ELEVATION
8" SUB-SEA TIE-IN TO 14" GENESIS EWING BANK BLOCK 952

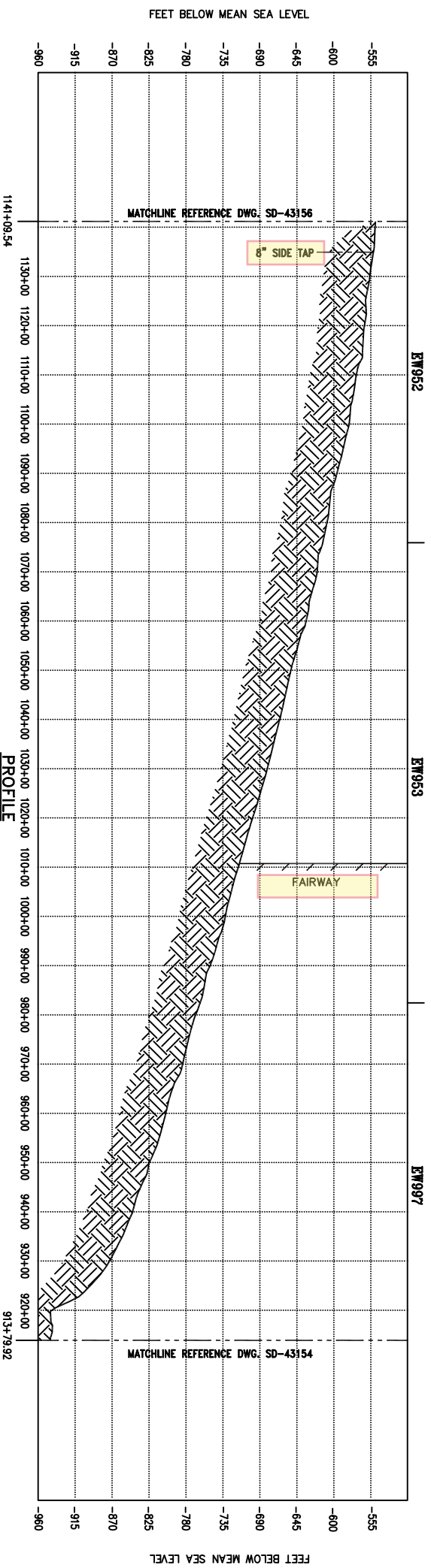
REV. NO.	DATE	BY	APP.	DESCRIPTION OF REVISION
08	07/99			AS-BUILT
				REVISED LENGTH OF PUP PIECE AND REVERSED CHECK VALVE
				GENERAL REVISIONS
				MODIFIED TARGET BOX COORDINATES

ES NO. BY DATE

EWING BANK BLOCK 952

SCALE	DATE	REV. NO.
1/4" = 1'-0"	06/98	08

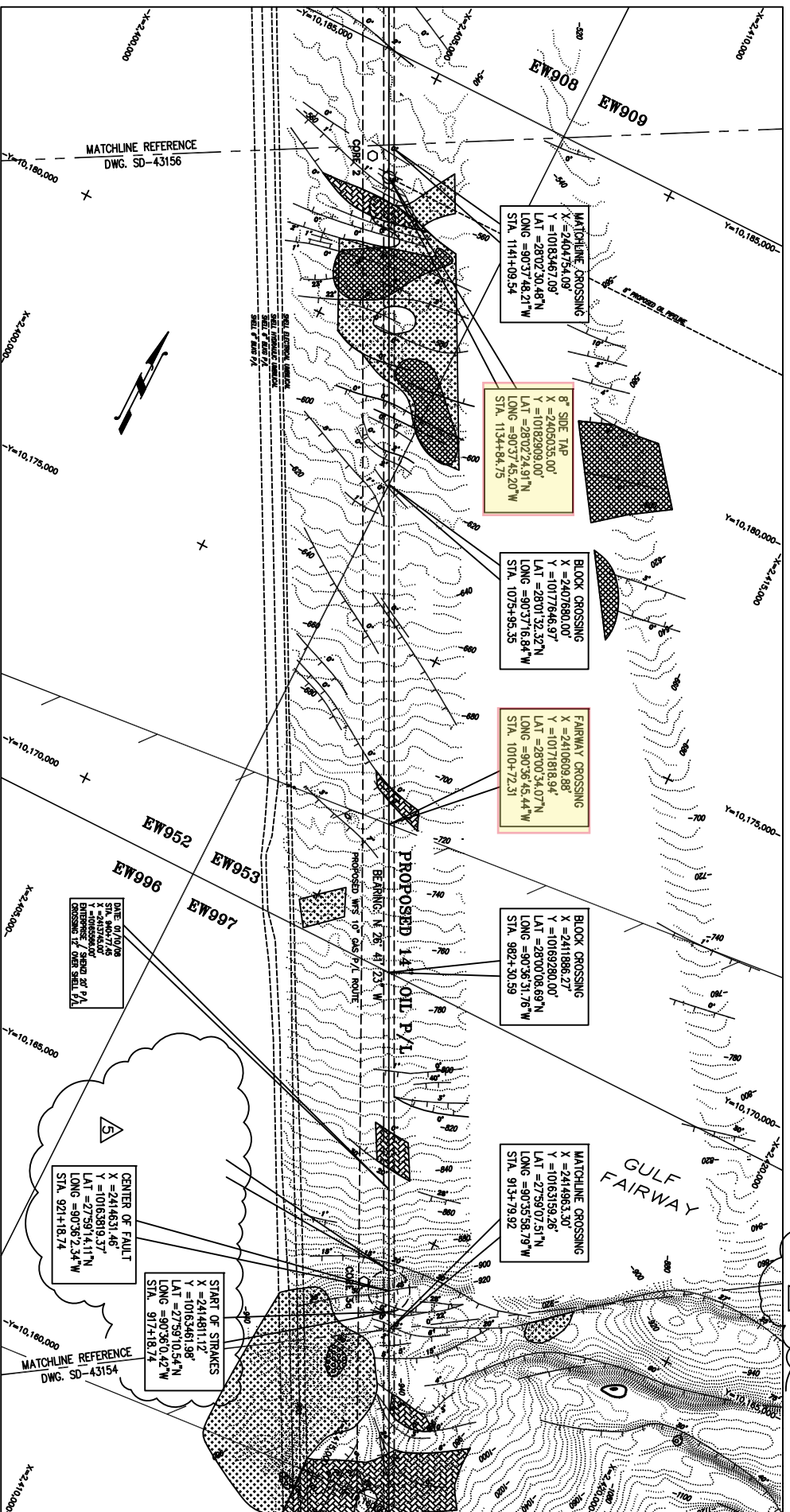
SD - 50519



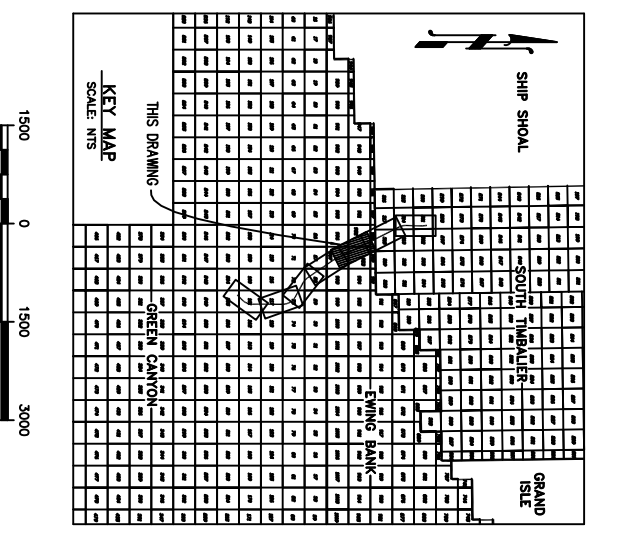
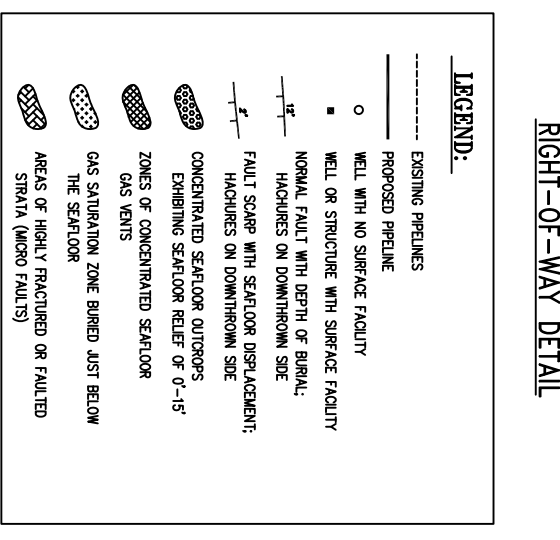
LINE PIPE	14.000" O.D. X .562" W.T. API 5L X52 SMLS LINE PIPE	LINE PIPE	
COATING	16 MILS MIN. FIBRE COATING	COATING	
ANODES	ANODES SPACED EVERY 400 FT	ANODES	
OTHER	N/A	OTHER	

START OF TYPE 1 BLOCK ARRESTOR (GROUTED SLEEVE) EACH WITH FIBRE COATING + 1 SPARE

INSTALL VALV. SURPRESSION STRAKES - 20 JOINTS



- NOTES:
1. SURVEY DATA TAKEN FROM C & C TECHNOLOGIES, ACQUIRED MAY 1-9, 1996, FROM SURVEY VESSELS: R/V ALPHA & M/V RAMBO, FROM GC-205 TO ST-301.
 2. (3) THREE INITIAL STRAKE JOINTS TO HAVE YELLOW STRAKE SLEEVES.
 3. (3) THREE FINAL STRAKE JOINTS TO HAVE YELLOW STRAKE SLEEVES.
- RIGHT-OF-WAY DETAIL
- RIGHT-OF-WAY LIMITS
- PROPOSED PIPELINE
- 100'
- 100'
- RIGHT-OF-WAY LIMITS
1. THE RIGHT OF WAY OF PROPOSED PIPELINE IS ACQUAIRELY REPRESENTED.
 2. THE DESIGN CHARACTERISTICS OF THIS PIPELINE ARE IN COMPLIANCE WITH APPLICABLE REGULATIONS.



MAP EXPLANATION

MAP PROJECTION BASED UPON UNIVERSAL TRANSVERSE MERCATOR (ZONE 19). (GRID UNITS IN FEET) GEODEMIC DATUM: NA 1927 ELPSSOD: CLARKE 1866.

TRANSPORTATION ENGINEERING

COMMENTS / REMARKS

CAD DRAWING DO NOT REVISE MANUALLY

REV NO	DATE	DESCRIPTION OF REVISION
06	10/13/09	ADDED P/L CROSSING @ STA. 940+77.45

GENESIS SHELL OIL PRODUCTS COMPANY TRANSPORTATION ENGINEERING HOUSTON, TEXAS

ALIGNMENT SHEET 5 OF 7 GENESIS 14" OIL PIPELINE FROM GC-205 TO ST-301 "B"

SCALE 1" = 1500' UNLESS NOTED DATE 8/16/06 SD - 43155 - 06