

JOINT PUBLIC NOTICE

April 24, 2017

United States Army
Corps of Engineers
New Orleans District
Regulatory Branch, OD-SE
Room 280
7400 Leake Avenue
New Orleans, Louisiana 70118

(504) 862-1564

Stephanie.L.Castaing@usace.army.mil

Project Manager
Stephanie Castaing
Permit Application Number
MVN 2009-1461-EPP

State of Louisiana
Department of Environmental Quality
ATTN: Water Quality Certifications

Post Office Box 4313
Baton Rouge, Louisiana 70821-4313

(225) 219-3225

Project Manager
Elizabeth Hill
WQC Application Number
WQC 130927-01

Interested parties are hereby notified that a permit application has been received by the New Orleans District of the U.S. Army Corps of Engineers pursuant to: [X] Section 10 of the Rivers and Harbors Act of March 3, 1899 (30 Stat. 1151; 33 USC 403); and/or [X] Section 404 of the Clean Water Act (86 Stat. 816; 33 USC 1344).

Application has also been made to the Louisiana Department of Environmental Quality, Water Quality Certifications, for a Water Quality Certification (WQC) in accordance with statutory authority contained in LRS30:2047 A(3), and provisions of Section 401 of the Clean Water Act (P.L.95-17).

MODIFICATION TO SHIFT A PREVIOUSLY PERMITTED SHIP/ BARGE DOCK AND STRUCTURES DOWNSTREAM, WITHIN THE MISSISSIPPI RIVER IN ST. JOHN THE BAPTIST PARISH

NAME OF APPLICANT: Pin Oaks Holdings, LLC, c/o Lanier & Associates Engineers, ATTN: Price Lanier, 4101 Magazine Street, Louisiana 70115.

LOCATION OF WORK: The project is located on the left descending bank of the Mississippi River, at about 144 miles above Head of Passes, located off of LA Highway 44, Mt. Airy, Louisiana, in St. John the Baptist Parish, as shown on the attached drawings.

Latitude: 30.06173/Longitude: -90.63511 Hydrologic Unit Codes: 08070100 Lower Mississippi River-Baton Rouge.

CHARACTER OF WORK: Shift and install and maintain previously permitted ship/ barge dock #2 and appurtenant structures downstream approximately 700'. Project implementation requires deposition of 500 cubic yards of rock. No dredging will be required. The applicant has stated that no jurisdictional wetlands will be impacted; therefore, compensatory mitigation has not been proposed.

The comment period for the Department of the Army Permit and the Louisiana Department of Environmental Quality WQC will close **30 days** from the date of this joint public notice. Written comments, including suggestions for modifications or objections to the proposed work, stating reasons thereof, are being solicited from anyone having interest in this permit and/or this WQC request and must be mailed so as to be received before or by the last day of the comment period. Letters concerning the Corps of Engineers permit application must reference the applicant's name and the Permit Application Number, and be mailed to the Corps of Engineers at the address above, **ATTENTION: REGULATORY BRANCH**. Similar letters concerning the Water Quality Certification must reference the applicant's name and the WQC Application number and be mailed to the Louisiana Department of Environmental Quality at the address above.

The application for this proposed project is on file with the Louisiana Department of Environmental Quality and may be examined during weekdays between 8:00 a.m. and 4:30 p.m. Copies may be obtained upon payment of costs of reproduction.

Corps of Engineers Permit Criteria

The decision whether to issue a permit will be based on an evaluation of the probable impacts, including cumulative impacts of the proposed activity on the public interest. That decision will reflect the national concern for both protection and utilization of important resources. The benefit which reasonably may be expected to accrue from the proposal must be balanced against its reasonably foreseeable detriments. All factors which may be relevant to the proposal will be considered including the cumulative effects thereof; among those are conservation, economics, aesthetics, general environmental concerns, wetlands, historic properties, fish and wildlife values, flood hazards, floodplain values, land use, navigation, shoreline erosion and accretion, recreation, water supply and conservation, water quality, energy needs, safety, food and fiber production, mineral needs, considerations of property ownership and, in general, the needs and welfare of the people.

The U.S. Army Corps of Engineers is soliciting comments from the public, federal, state, and local agencies and officials, Indian Tribes, and other interested parties in order to consider and evaluate the impacts of this proposed activity. Any comments received will be considered by the U.S. Army Corps of Engineers to determine whether to make, modify, condition, or deny a permit for this proposal. To make this decision, comments are used to assess impacts on endangered species, historic properties, water quality, general environmental effects, and other public interest factors listed above. Comments are used in the preparation of an Environmental Assessment and/or an Environmental Impact Statement pursuant to the National Environmental Policy Act. Comments are also used to determine the need for a public hearing and to determine the overall public interest of the proposed activity.

The New Orleans District is unaware of properties listed on the National Register of Historic Places near the proposed work. The possibility exists that the proposed work may damage or destroy presently unknown archeological, scientific, prehistorical, historical sites, or data. Issuance of this public notice solicits input from the State Archeologist and State Historic Preservation Officer regarding potential impacts to cultural resources.

The New Orleans District has determined that the proposed activity will have no effect on the endangered pallid sturgeon (*Scaphirhynchus albus*) species based on the Standard Local Operating Procedure for Endangered Species of Louisiana (SLOPES), dated October 22, 2014, between the U.S. Army Corps of Engineers and U.S. Fish and Wildlife Service, Ecological Services Office.

Our initial finding is that the proposed work would not affect any species, nor affect any habitat designated as critical to the survival and recovery of such species, listed as endangered by the U.S. Department of Commerce.

This notice initiates the Essential Fish Habitat (EFH) consultation requirements of the Magnuson-Stevens Fishery Conservation and Management Act. The applicant's proposal would result in the destruction or alteration of 0.1 acre of EFH utilized by various life stages of red drum and penaeid shrimp. Our initial determination is that the proposed action would not have a substantial adverse impact on EFH or federally managed fisheries in the Gulf of Mexico. Our final determination relative to project impacts and the need for mitigation measures is subject to review by and coordination with the National Marine Fisheries Service.

If the proposed work involves deposits of dredged or fill material into navigable waters, the evaluation of the probable impacts will include the application of guidelines established by the Administrator of the Environmental Protection Agency. Also, a certification that the proposed activity will not violate applicable water quality standards will be required from the Department of Environmental Quality, Water Quality Certifications, before a permit is issued.

Any person may request, in writing, within the comment period specified in this notice, that a public hearing be held to consider this application. Requests for public hearings shall state, with particularity, the reasons for holding a public hearing.

The applicant has certified that the proposed activity described in the application complies with and will be conducted in a manner that is consistent with the Louisiana Coastal Resources Program. The Department of the Army permit will not be issued unless the applicant received approval or a waiver of the Coastal Use Permit by the Department of Natural Resources.

You are requested to communicate the information contained in this notice to any other parties whom you deem likely to have interest in the matter.

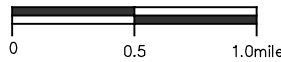
Michael V. Farabee
Chief, Eastern Evaluation Section

Enclosure

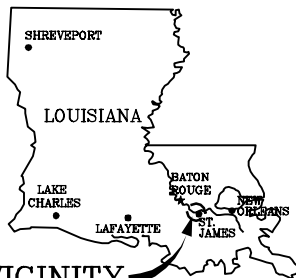


VICINITY MAP

GRAPHIC SCALE IN MILES

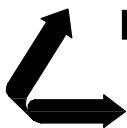


PARISH: ST. JOHN PARISH
 LATITUDE: 30°03'06.1"
 LONGITUDE: 90°38'34.3"



VICINITY

10325-P01



LANIER & ASSOCIATES

CONSULTING ENGINEERS
 INCORPORATED

NEW ORLEANS, LA · BEAUMONT, TX

MT. AIRY

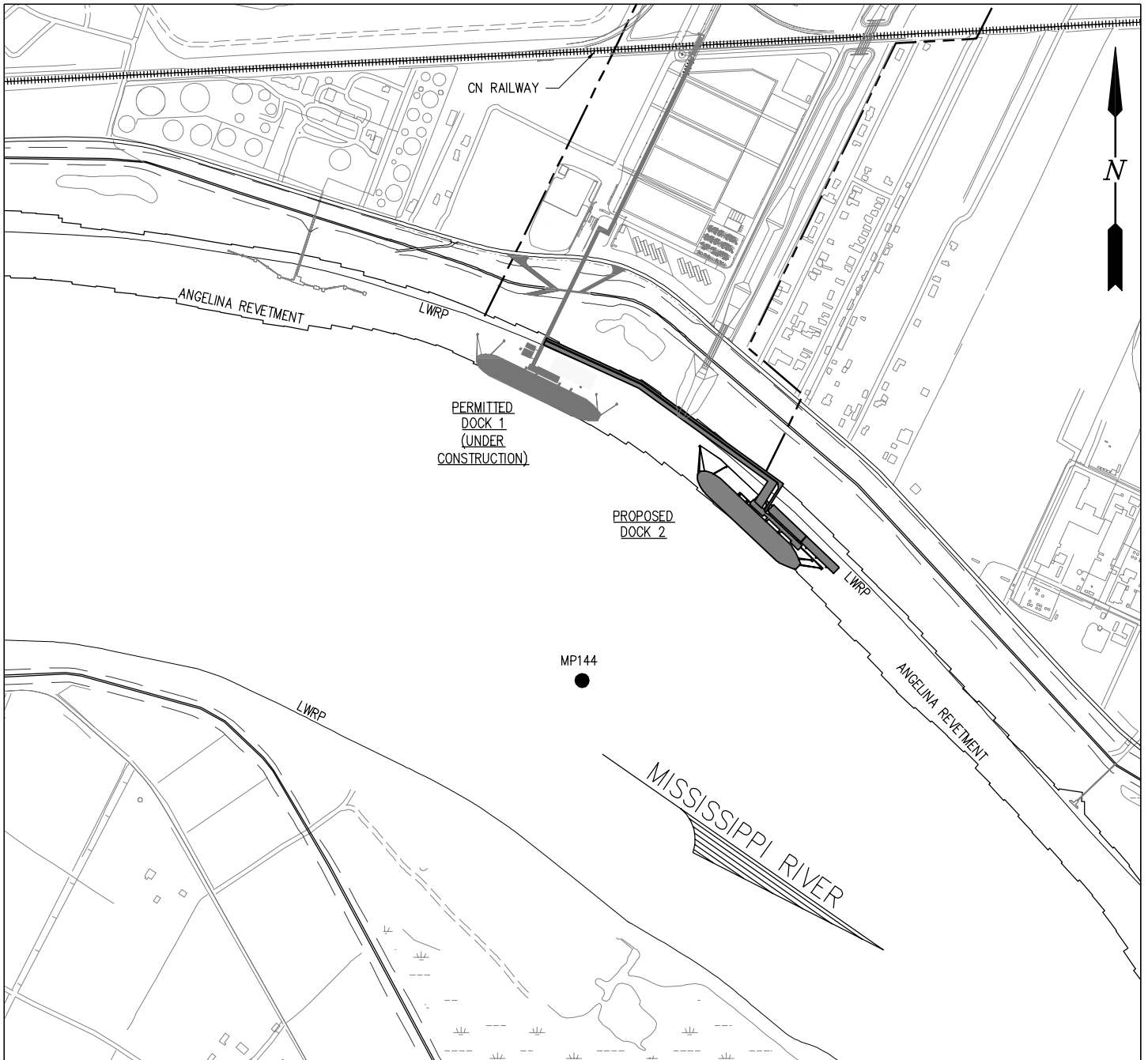
PIN OAK HOLDINGS, LLC

LOUISIANA

**MARINE FACILITY MODIFICATION
 DOCK 2
 VICINITY MAP**

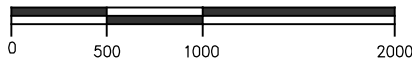
DATE JAN 2017
 DESIGN JEJ
 DRAWN MEW
 CHECK JEJ
 CONTRACT 10325
 SHEET No.

1 OF 15



SITE PLAN

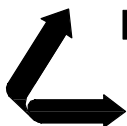
GRAPHIC SCALE (IN FEET)



NOTES:

1. AS-BUILT DRAWINGS WILL BE SUBMITTED WITHIN 30 DAYS OF COMPLETION OF THIS PROJECT TO THE LOUISIANA DEPARTMENT OF NATURAL RESOURCES, OFFICE OF CONSERVATION, PIPELINE DIVISION, P. O. BOX 94275 BATON ROUGE, LA 70804, AND TO THE LOUISIANA DEPARTMENT OF NATURAL RESOURCES, COASTAL MANAGEMENT DIVISION, P. O. BOX 44487, BATON ROUGE, LA 70804-4487.
2. ALL STRUCTURES, FACILITIES, WELL AND PIPELINES/FLOWLINES OCCURRING IN OPEN WATER AREAS OR IN OILFIELD CANALS OR SLIPS SHALL BE REMOVED WITHIN 120 DAYS OF ABANDONMENT FOR THE FACILITIES FOR THE HEREIN PERMITTED USE UNLESS PRIOR WRITTEN APPROVAL TO LEAVE SUCH STRUCTURES IN PLACE IS RECEIVED FROM THE COASTAL MANAGEMENT DIVISION. THIS CONDITION DOES NOT PRECLUDE THE NECESSITY FOR REVISING THE CURRENT PERMIT OR OBTAINING A SEPARATE COASTAL USE PERMIT, SHOULD ONE BE REQUIRED.
3. STRUCTURES MUST ALSO BE MARKED/LIGHTED IN ACCORDANCE WITH U. S. COAST GUARD REGULATIONS.
4. IN ORDER TO ENSURE THE SAFETY OF ALL PARTIES, THE PERMITEE SHALL CONTACT THE LOUISIANA ONE CALL SYSTEM (1-800-272-3020) A MINIMUM OF 48 HOURS PRIOR TO THE COMMENCEMENT OF ANY EXCAVATION (DIGGING, DREDGING, JETTING, ETC.) OR DEMOLITION ACTIVITY

10325-P02



LANIER & ASSOCIATES

CONSULTING ENGINEERS
INCORPORATED

NEW ORLEANS, LA · BEAUMONT, TX

MT. ARY

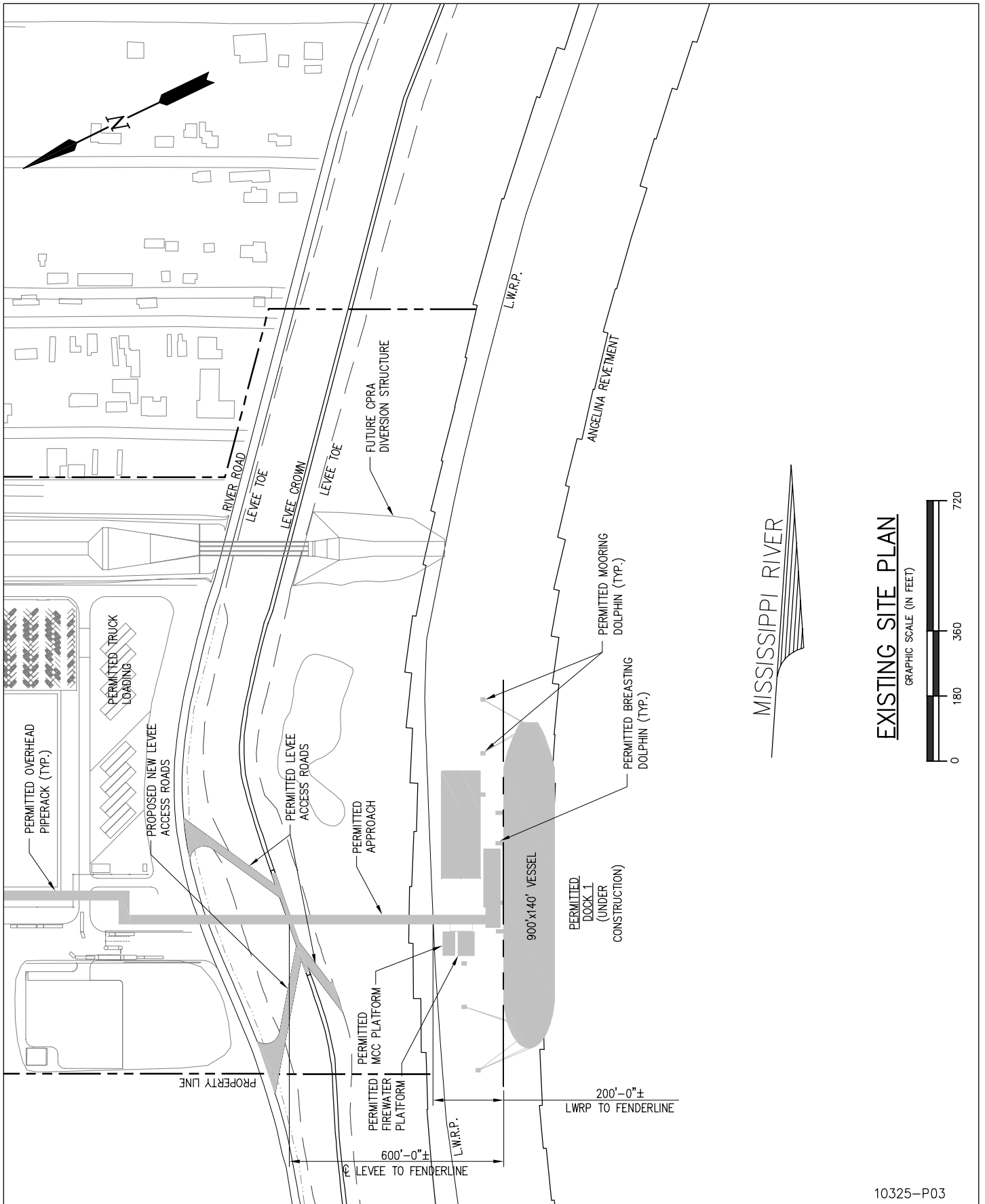
PIN OAK HOLDINGS, LLC

LOUISIANA

**MARINE FACILITY MODIFICATION
DOCK 2
OVERALL SITE PLAN**

DATE JAN 2017
DESIGN JEJ
DRAWN MEW
CHECK JEJ
CONTRACT 10325
SHEET No.

2 OF **115**



LANIER & ASSOCIATES
 CONSULTING ENGINEERS
 INCORPORATED
 NEW ORLEANS, LA · BEAUMONT, TX

MT. ARY

PIN OAK HOLDINGS, LLC

LOUISIANA

**MARINE FACILITY MODIFICATION
 DOCK 2
 EXISTING SITE PLAN**

10325-P03

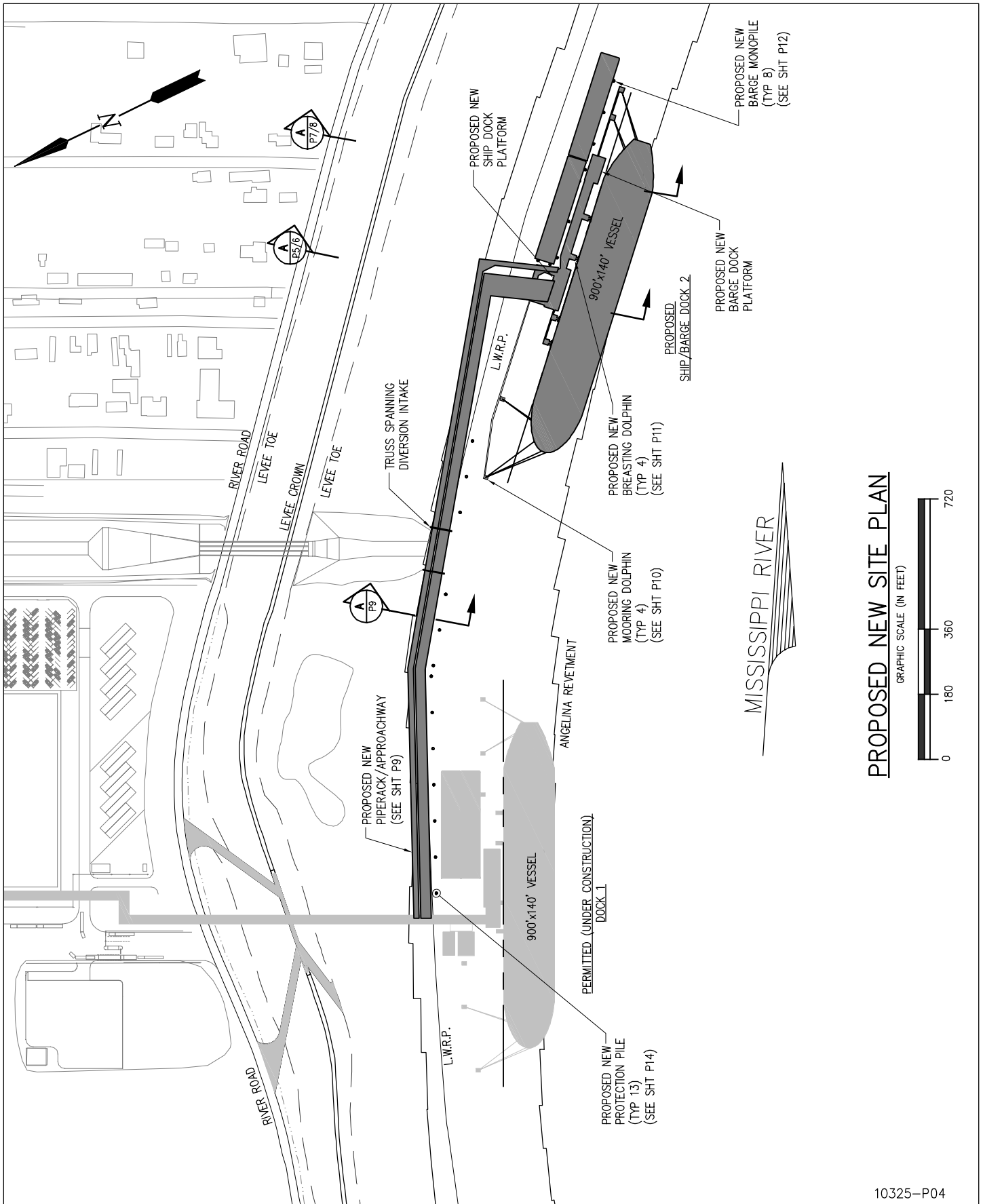
DATE JAN 2017
 DESIGN JEJ
 DRAWN MEW
 CHECK JEJ
 CONTRACT 10325
 SHEET No.

3 OF **15**

EXISTING SITE PLAN

GRAPHIC SCALE (IN FEET)





PROPOSED NEW SITE PLAN

GRAPHIC SCALE (IN FEET)



LANIER & ASSOCIATES

CONSULTING ENGINEERS
INCORPORATED

NEW ORLEANS, LA · BEAUMONT, TX

MT. ARY

PIN OAK HOLDINGS, LLC

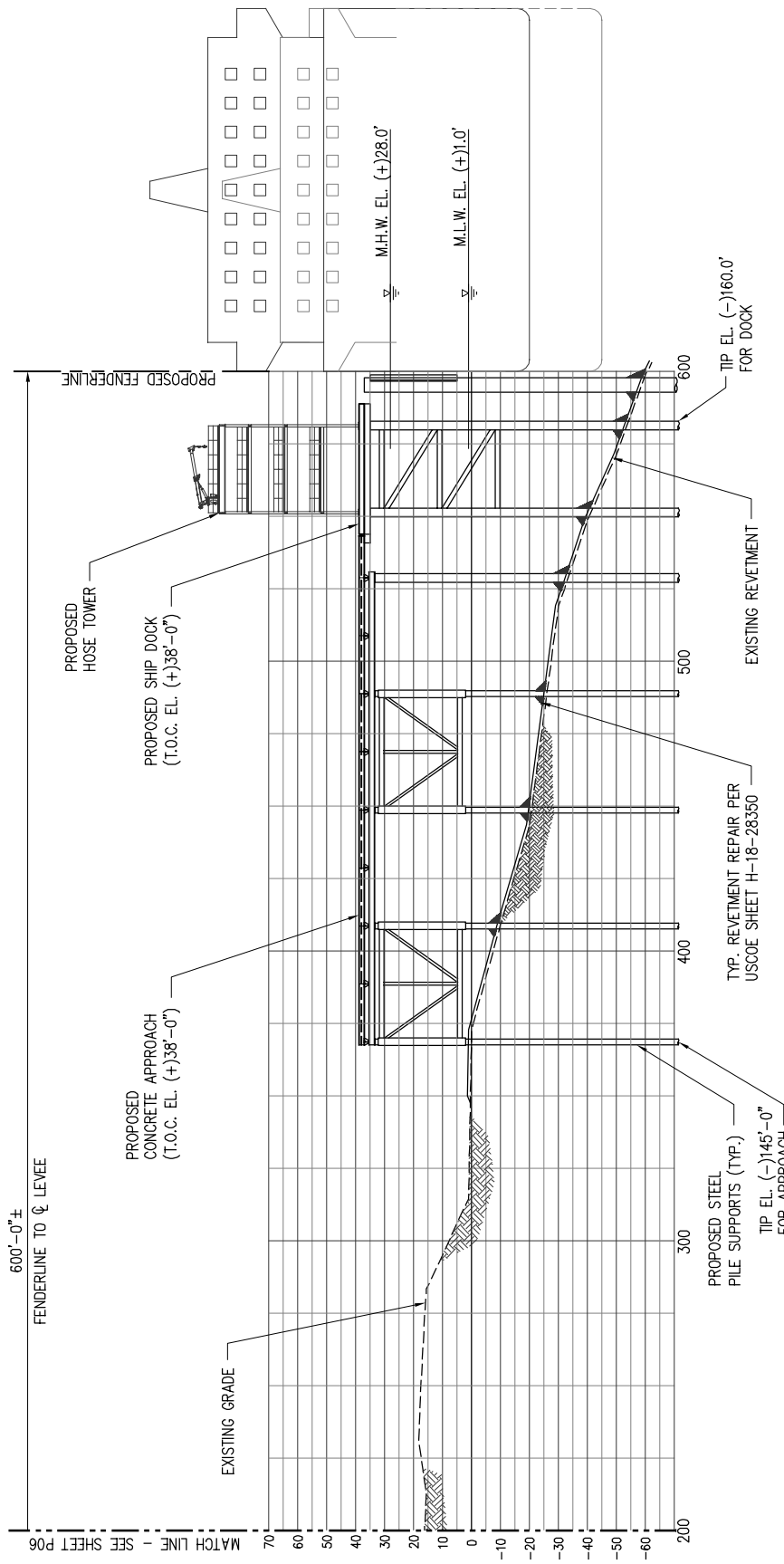
LOUISIANA

**MARINE FACILITY MODIFICATION
DOCK 2
PROPOSED NEW SITE PLAN**

10325-P04

DATE SEPT '15
DESIGN JEJ
DRAWN MEW
CHECK JEJ
CONTRACT 10325
SHEET No.

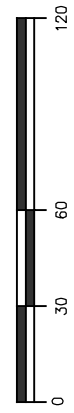
4 OF **15**



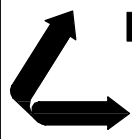
A
P4

SECTION AT APPROACHWAY/SHIP DOCK

SCALE: 1" = 60'



10325-P05

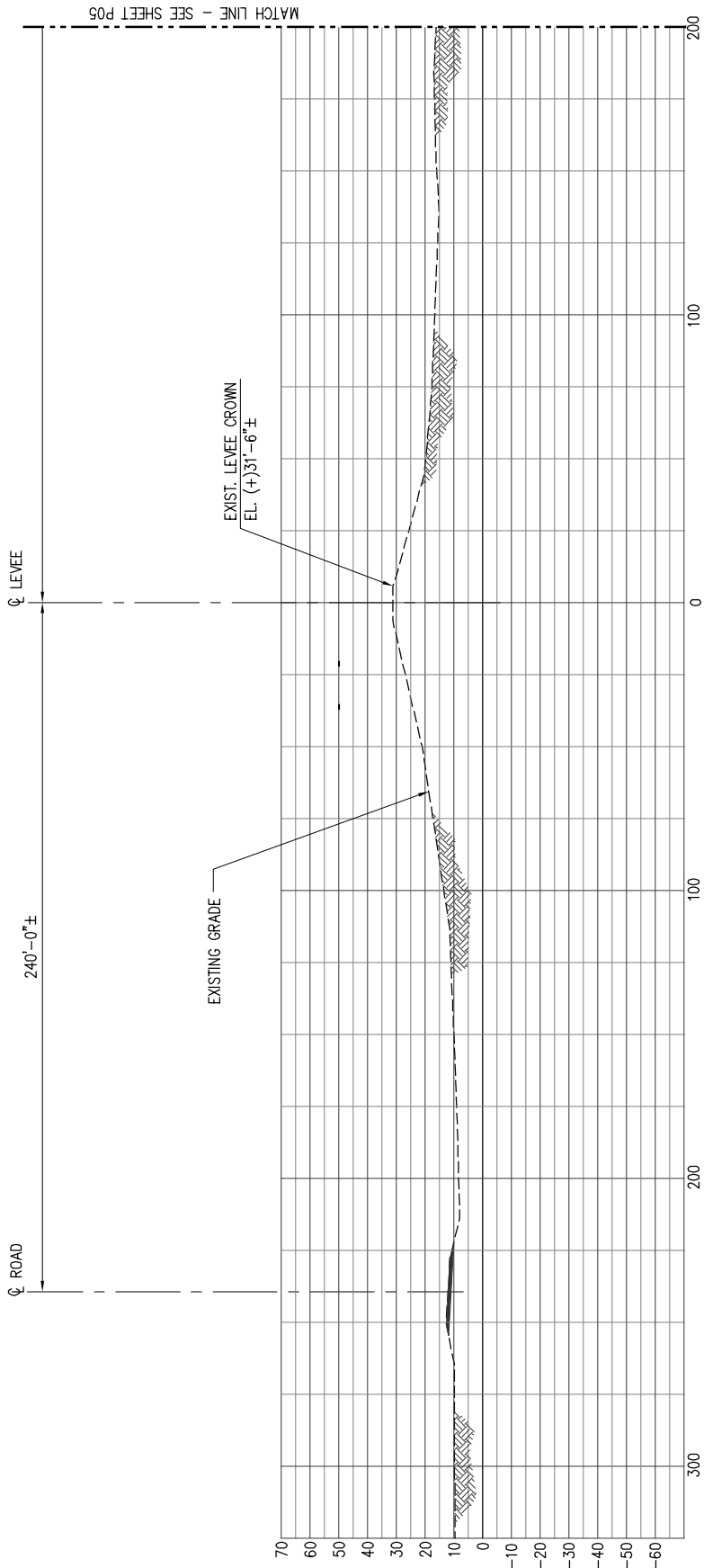


LANIER & ASSOCIATES
CONSULTING ENGINEERS
INCORPORATED
NEW ORLEANS, LA · BEAUMONT, TX

MT. ARY **PIN OAK HOLDINGS, LLC** LOUISIANA

**MARINE FACILITY MODIFICATION
DOCK 2
SECTION AT APPROACHWAY/SHIP DOCK**

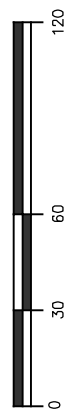
DATE JAN 2017
DESIGN JEJ
DRAWN MEW
CHECK JEJ
CONTRACT 10325
SHEET No.
5 OF **15**



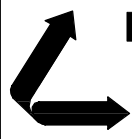
A
P4

SECTION AT APPROACHWAY/SHIP DOCK

SCALE: 1" = 60'



10325-P06

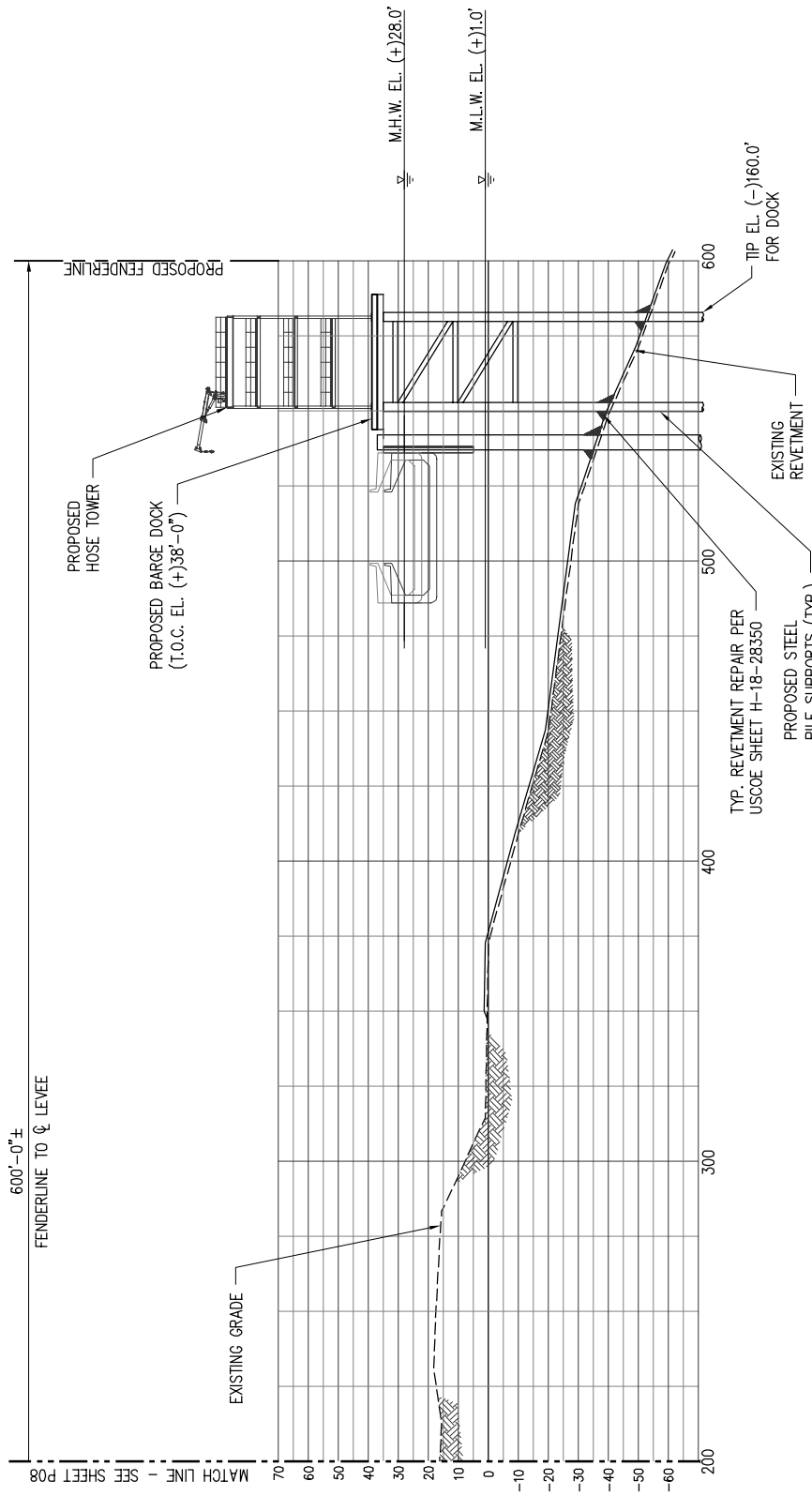


LANIER & ASSOCIATES
CONSULTING ENGINEERS
INCORPORATED
NEW ORLEANS, LA · BEAUMONT, TX

PIN OAK HOLDINGS, LLC
MT. ARY LOUISIANA

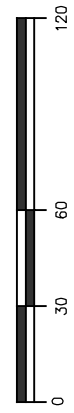
**MARINE FACILITY MODIFICATIONS
DOCK 2
SECTION AT APPROACHWAY/SHIP DOCK (CONT)**

DATE JAN 2017
DESIGN JEJ
DRAWN MEW
CHECK JEJ
CONTRACT 10325
SHEET No.
6 OF 15

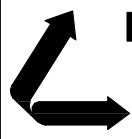


A
P4

SECTION AT BARGE DOCK
SCALE: 1" = 60'



10325-P07

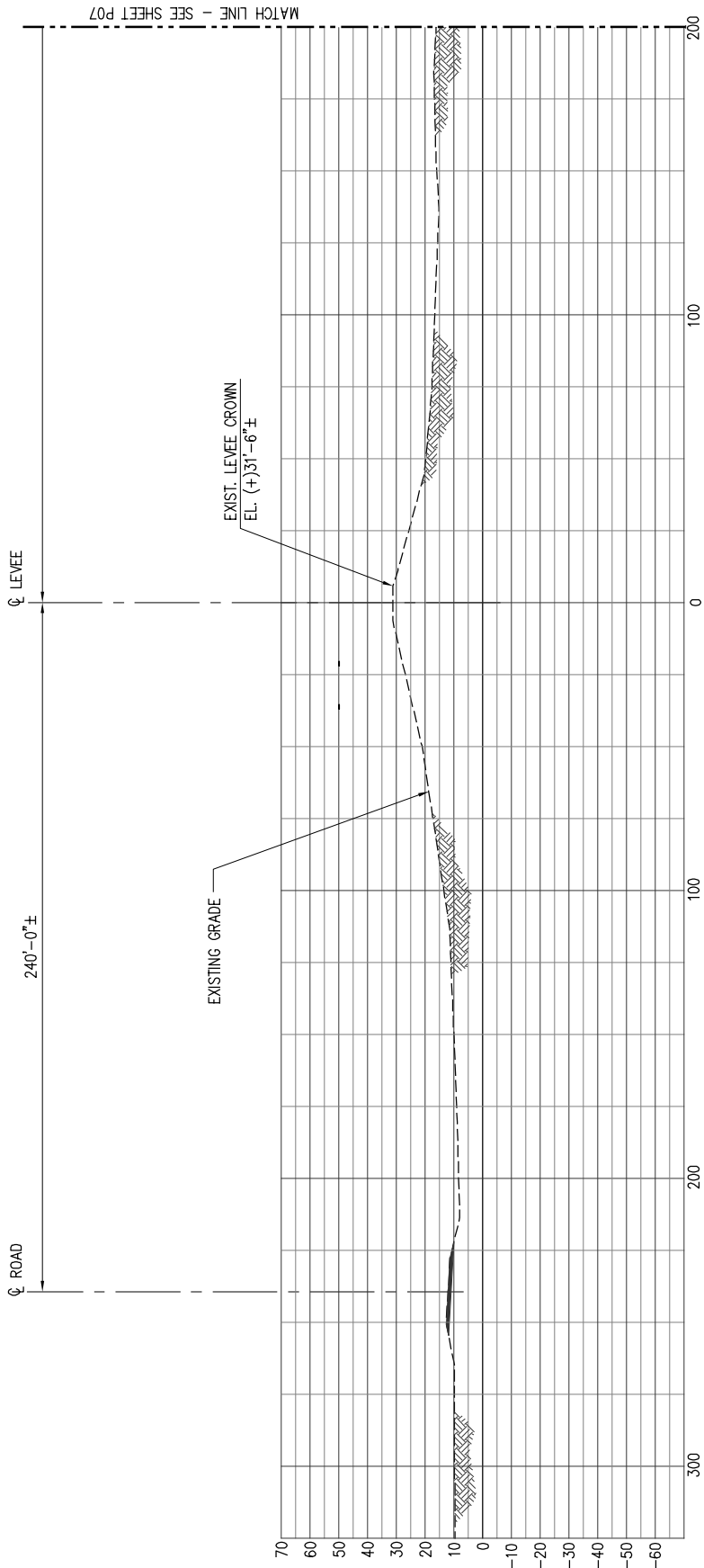


LANIER & ASSOCIATES
CONSULTING ENGINEERS
INCORPORATED
NEW ORLEANS, LA · BEAUMONT, TX

PIN OAK HOLDINGS, LLC
MT. ARY LOUISIANA

**MARINE FACILITY MODIFICATION
DOCK 2
SECTION AT BARGE DOCK/SHIP DOCK**

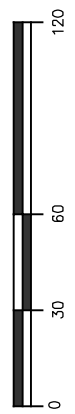
DATE JAN 2017
DESIGN JEJ
DRAWN MEW
CHECK JEJ
CONTRACT 10325
SHEET No.
7 OF **15**



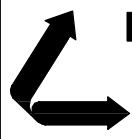
A
P4

SECTION AT BARGE DOCK

SCALE: 1" = 60'



10325-P08

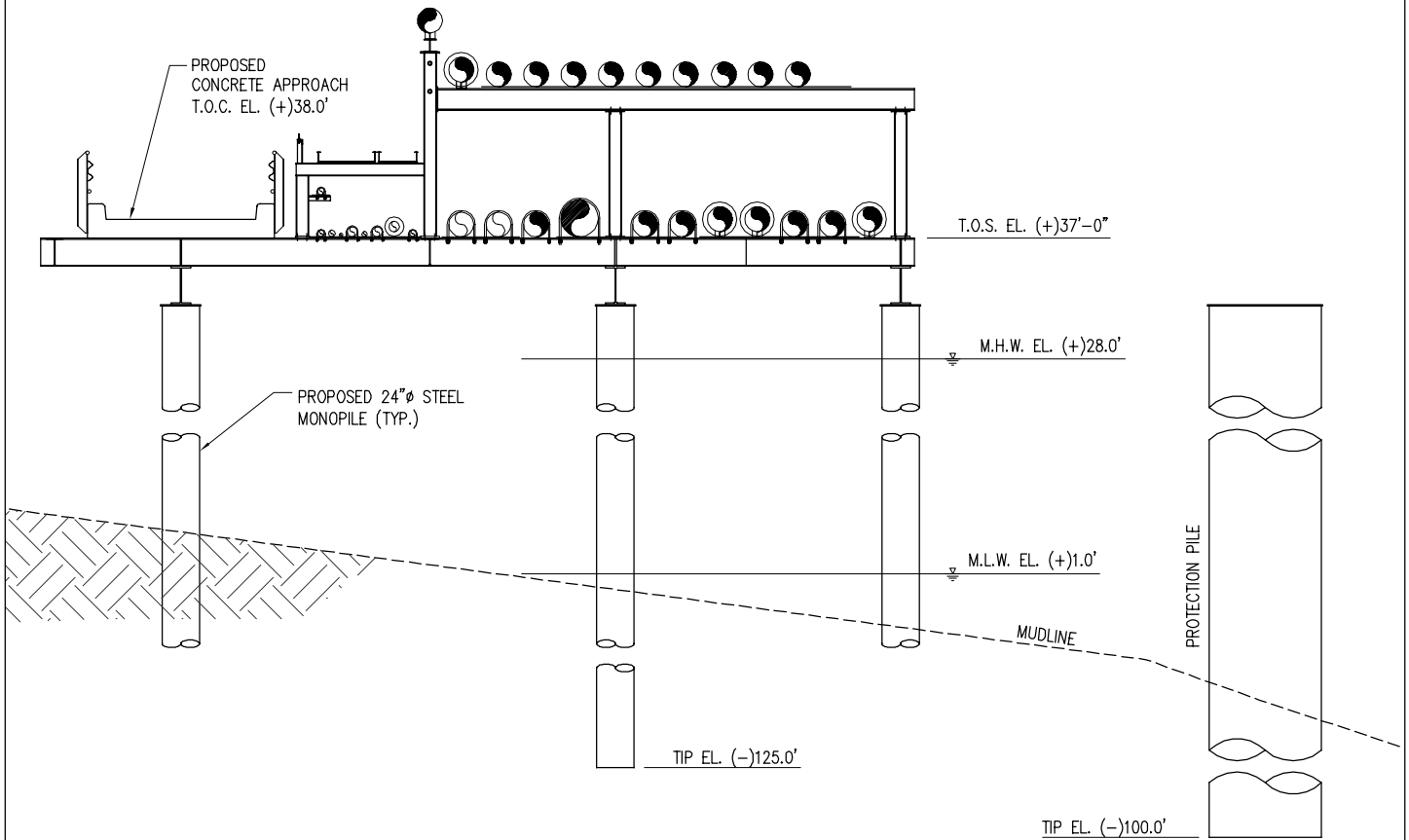


LANIER & ASSOCIATES
CONSULTING ENGINEERS
INCORPORATED
NEW ORLEANS, LA · BEAUMONT, TX

PIN OAK HOLDINGS, LLC
MT. ARY LOUISIANA

**MARINE FACILITY MODIFICATIONS
DOCK 2
SECTION AT BARGE DOCK/SHIP DOCK (CONT)**

DATE JAN 2017
DESIGN JEJ
DRAWN MEW
CHECK JEJ
CONTRACT 10325
SHEET No.
8 OF **15**

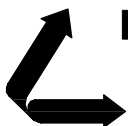


TYPICAL PIPERACK/APPROACHWAY SECTION A
P4

SCALE: 1" = 20'



10325-P9



LANIER & ASSOCIATES
CONSULTING ENGINEERS
INCORPORATED

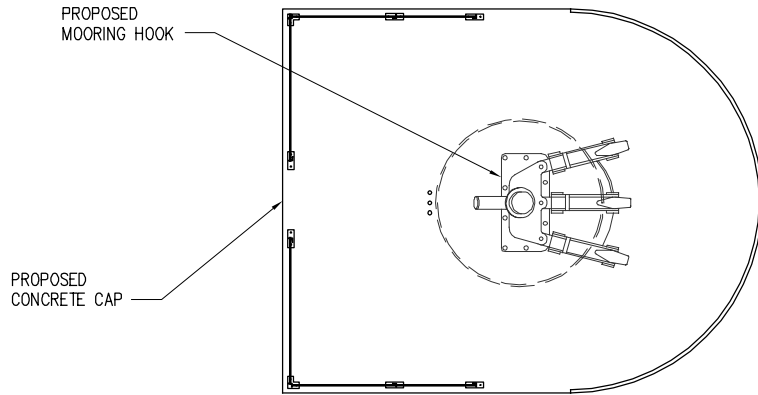
NEW ORLEANS, LA · BEAUMONT, TX

PIN OAK HOLDINGS, LLC
MT. ARY LOUISIANA

**MARINE FACILITY MODIFICATION
DOCK 2
TYPICAL PIPERACK/APPROACH SECTION**

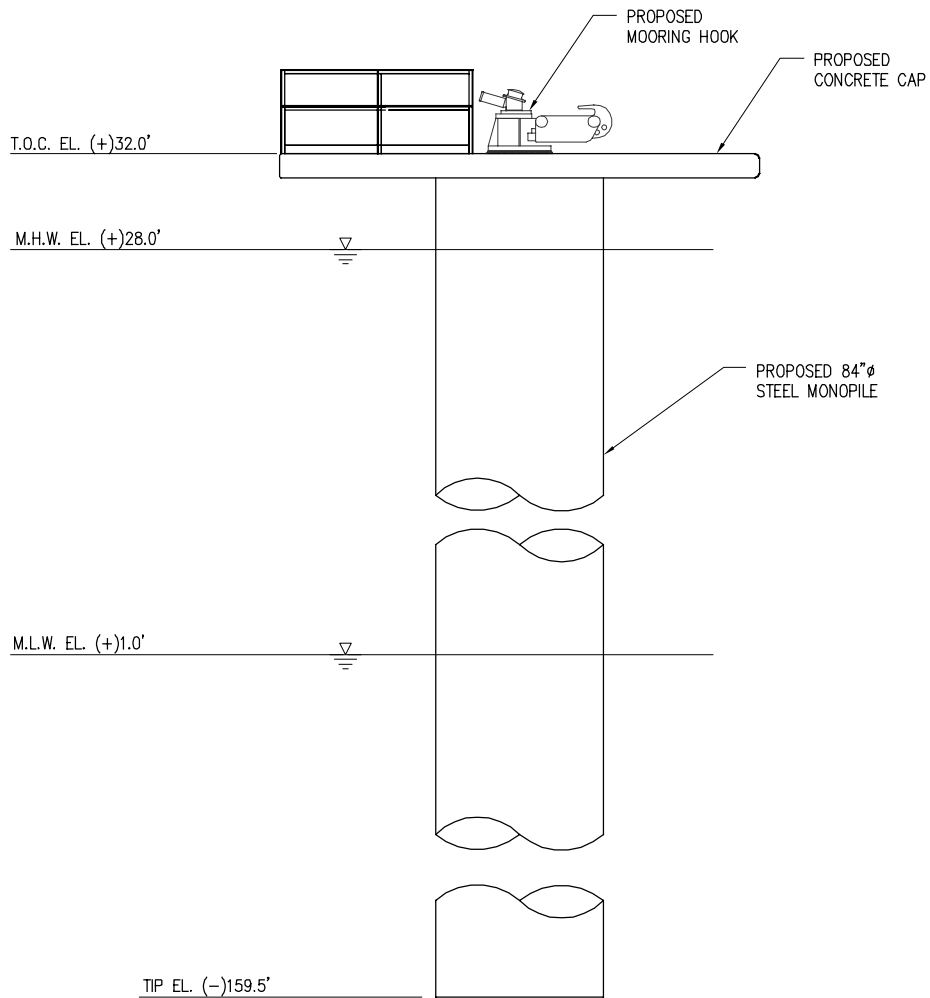
DATE JAN 2017
DESIGN JEJ
DRAWN MEW
CHECK JEJ
CONTRACT 10325
SHEET No.

9 OF 15



MOORING DOLPHIN PLAN

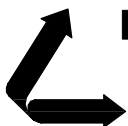
SCALE: 1/8" = 1'-0"



MOORING DOLPHIN ELEVATION

SCALE: 1/8" = 1'-0"

10325-P10

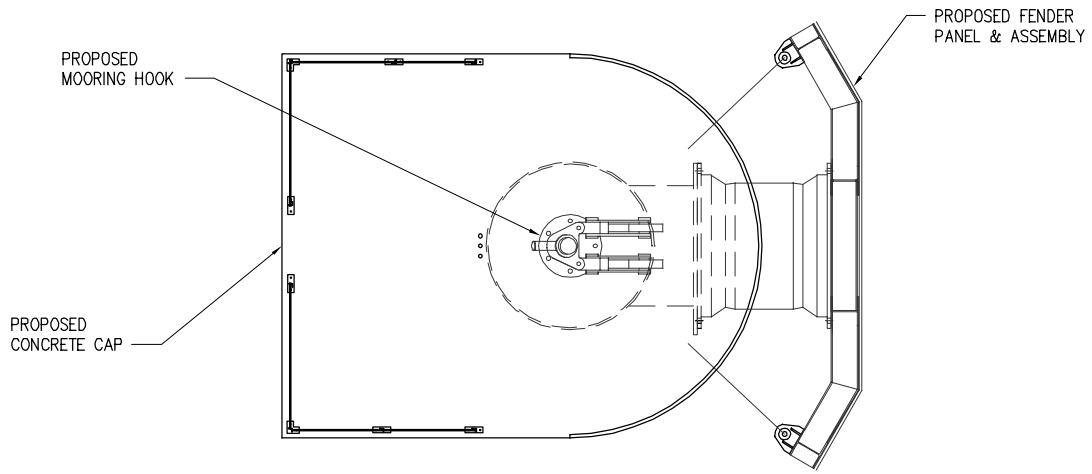


LANIER & ASSOCIATES
 CONSULTING ENGINEERS
 INCORPORATED
 NEW ORLEANS, LA · BEAUMONT, TX

PIN OAK HOLDINGS, LLC
 MT. ARY LOUISIANA

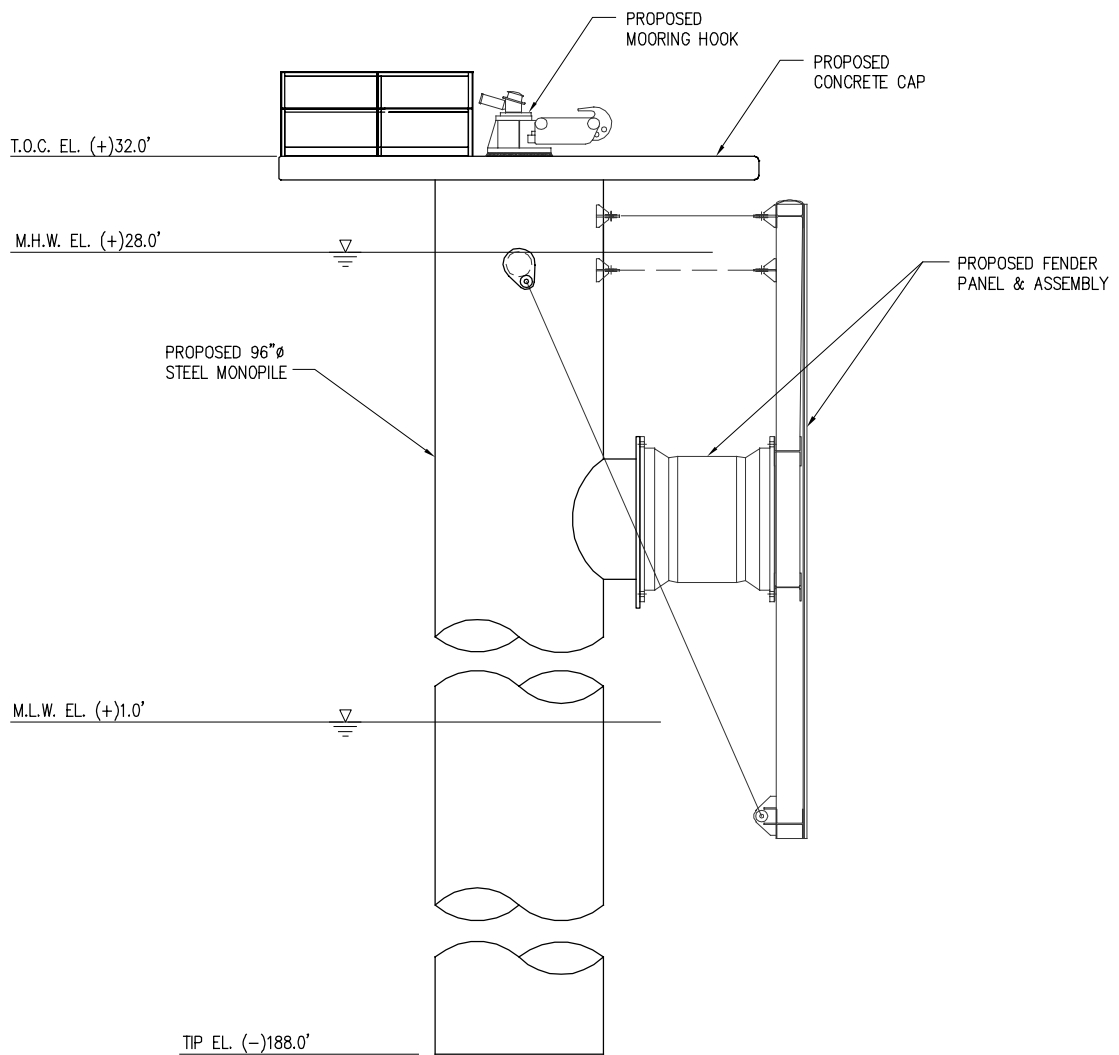
**MARINE FACILITY MODIFICATION
 DOCK 2
 TYPICAL MOORING DOLPHIN**

DATE JAN 2017
 DESIGN JEJ
 DRAWN MEW
 CHECK JEJ
 CONTRACT 10325
 SHEET No.
10 OF **15**



BREASTING DOLPHIN PLAN

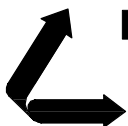
SCALE: 1/8" = 1'-0"



BREASTING DOLPHIN ELEVATION

SCALE: 1/8" = 1'-0"

10325-P11



LANIER & ASSOCIATES

CONSULTING ENGINEERS
INCORPORATED

NEW ORLEANS, LA · BEAUMONT, TX

PIN OAK HOLDINGS, LLC

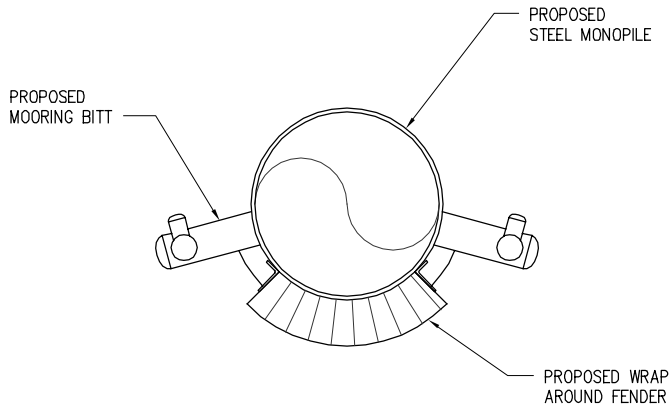
MT. AIRY

LOUISIANA

**MARINE FACILITY MODIFICATION
DOCK 2
TYPICAL BREASTING DOLPHIN**

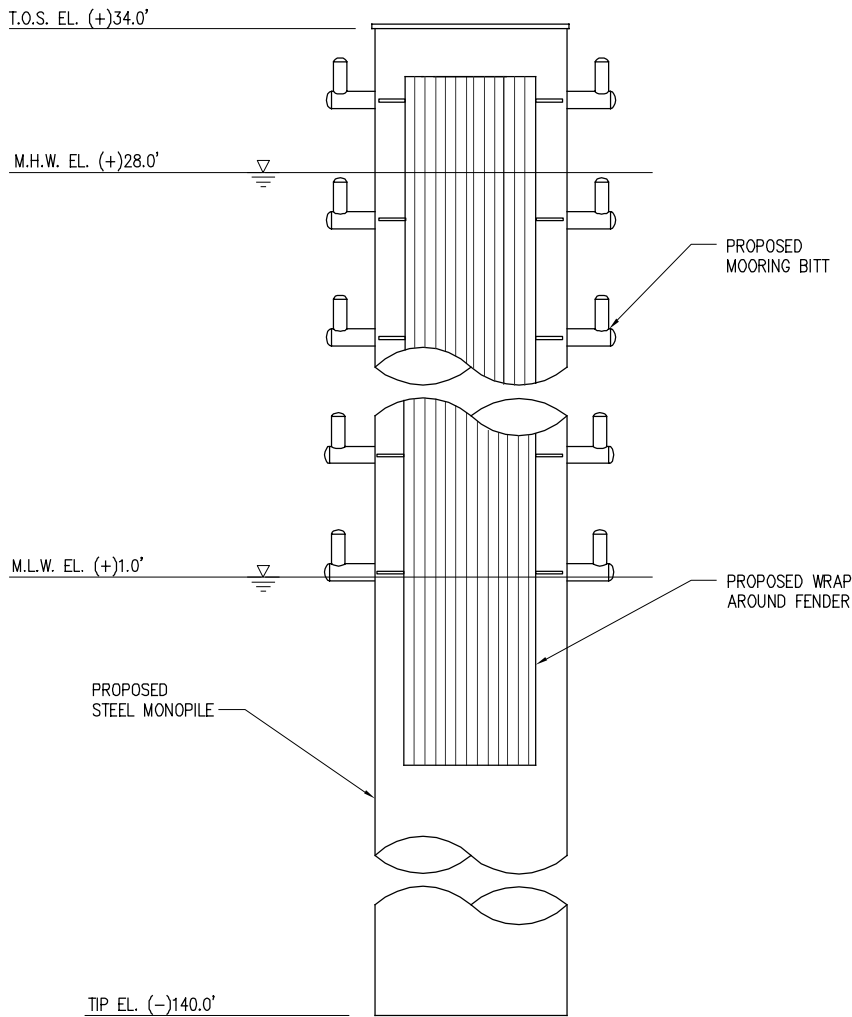
DATE JAN 2017
DESIGN JEJ
DRAWN MEW
CHECK JEJ
CONTRACT 10325
SHEET No.

11 OF 15



MONOPILE DOLPHIN PLAN

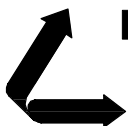
SCALE: 1/8"=1'-0"



BARGE MONOPILE DOLPHIN ELEVATION

SCALE: 1/8"=1'-0"

10325-P12



LANIER & ASSOCIATES

CONSULTING ENGINEERS
INCORPORATED

NEW ORLEANS, LA · BEAUMONT, TX

PIN OAK HOLDINGS, LLC

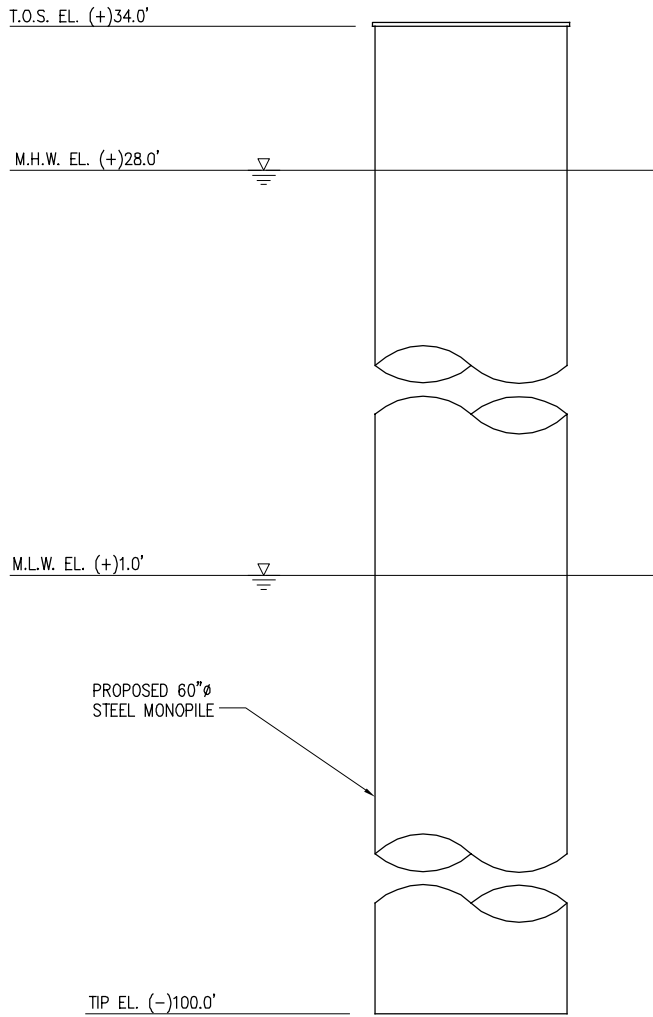
MT. AIRY

LOUISIANA

**MARINE FACILITY MODIFICATION
DOCK 2
TYPICAL BARGE MONOPILE DOLPHIN**

DATE JAN 2017
DESIGN JEJ
DRAWN MEW
CHECK JEJ
CONTRACT 10325
SHEET No.

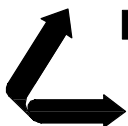
12 OF 15



TYPICAL PROTECTION PILE

SCALE: 1/8"=1'-0"

10325-P14



LANIER & ASSOCIATES

CONSULTING ENGINEERS
INCORPORATED

NEW ORLEANS, LA · BEAUMONT, TX

MT. ARY

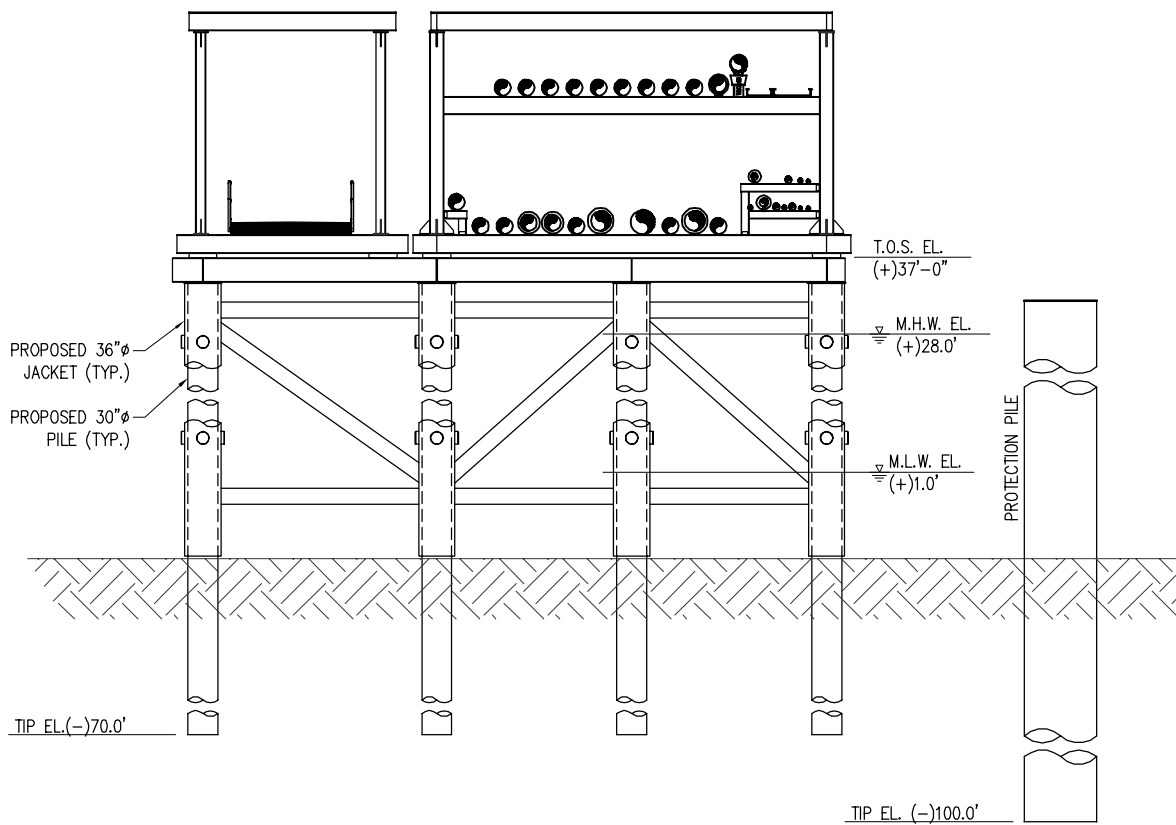
PIN OAK HOLDINGS, LLC

LOUISIANA

**MARINE FACILITY MODIFICATION
DOCK 2
TYPICAL PROTECTION PILE**

DATE JAN 2017
DESIGN JEJ
DRAWN MEW
CHECK JEJ
CONTRACT 10325
SHEET No.

13 OF **15**



TYPICAL TRUSS SUPPORT SECTION

SCALE: 1/16" = 1'-0"

10325-P14



LANIER & ASSOCIATES

CONSULTING ENGINEERS
INCORPORATED

NEW ORLEANS, LA · BEAUMONT, TX

MT. AIRY

PIN OAK HOLDINGS, LLC

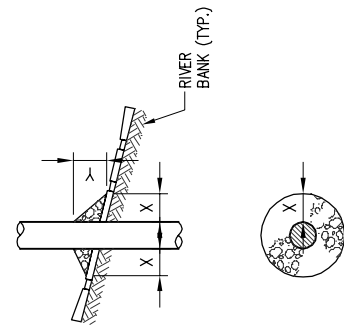
LOUISIANA

**MARINE FACILITY MODIFICATION
DOCK 2
TYPICAL TRUSS SUPPORT SECTION**

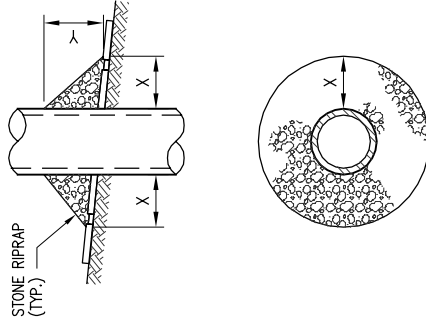
DATE JAN 2017
DESIGN JEJ
DRAWN MEW
CHECK JEJ
CONTRACT 10325
SHEET No.

14 OF **15**

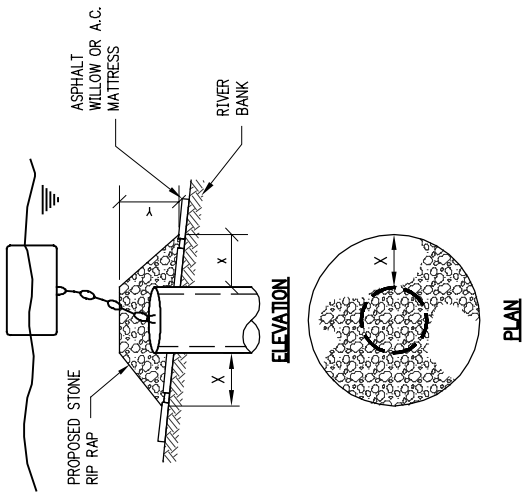
PILE



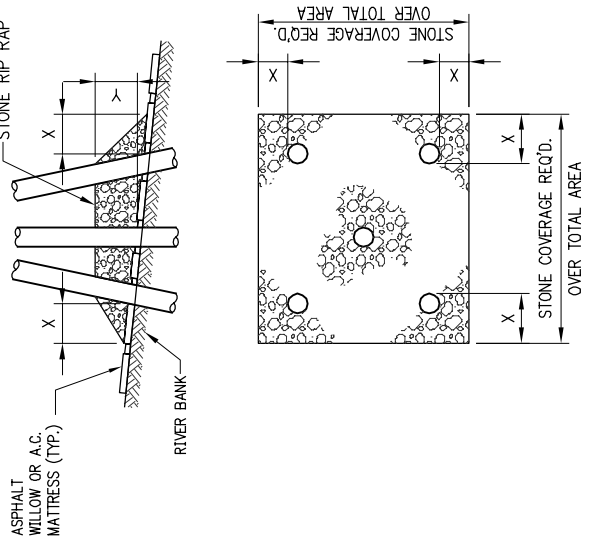
CAISSON



SPUD PILE WITH BUOY AND ANCHOR CHAIN



PILE CLUSTER



NOTES:

1. SIZE OF RIPRAP TO VARY BETWEEN 6 POUNDS AND 125 POUNDS WITH 40% TO 60% OF THE STONE WITHIN THE RANGE OF 25 POUNDS TO 75 POUNDS.
2. WHEN PENETRATING UPPER BANK PAVING IN A RETENTION AREA WITH PILES, CAISSONS AND/OR SPUD PILES, THE RIPRAP SHOULD BE PLACED OVER ALL AREAS WHERE BANK PAVING IS DISTURBED BY DRIVING OPERATIONS.
3. WHEN USING ANCHOR CHAIN AND BUOY SYSTEM ANCHOR CHAIN MUST BE ATTACHED AT TOP OF PILE TO MINIMIZE RETENTION DAMAGE.

DEPTH OF WATER IN FEET AT TIME OF STONE PLACEMENT	DIMENSIONS IN FEET FOR PROTECTION AREA REQUIRED									
	PILE		CAISSON		SPUD PILE WITH ANCHOR CHAIN & BUOY		PILE CLUSTER			
	X	Y	X	Y	X	Y	X	Y	X	Y
1 TO 10	3	1 1/2	5	2	3	1	3	1	3	1
11 TO 40	5	2	8	3	7	3	6	2	6	2
41 TO 60	8	3	12	4	12	4	10	3	10	3