



DEPARTMENT OF THE ARMY
U.S. ARMY CORPS OF ENGINEERS, NEW ORLEANS DISTRICT
7400 LEAKE AVENUE
NEW ORLEANS, LOUISIANA 70118-3651

November 14, 2022

Project Manager:
Stephanie Castaing
(504) 862-1564
Stephanie.L.Castaing@usace.army.mil

Permit Application Number: MVN-2022-00578-EPP

PUBLIC NOTICE

Interested parties are hereby notified that a permit application has been received by the New Orleans District of the U.S. Army Corps of Engineers pursuant to: [X] Section 10 of the Rivers and Harbors Act of March 3, 1899 (30 Stat. 1151; 33 USC 403); and/or [X] Section 404 of the Clean Water Act (86 Stat. 816; 33 USC 1344).

SHORELINE PROTECTION PROJECT WITHIN/ALONG LAKE PONTCHARTRAIN IN ST. CHARLES PARISH

NAME OF APPLICANT: Coastal Protection & Restoration Authority (CPRA), Attn: Sydney Dobson, Post Office Box 44027, Baton Rouge, Louisiana 70804 or sydney.dobson@la.gov.

LOCATION OF WORK: At approximately Latitude: 30.055694, Longitude: -90.316522, within/along Lake Pontchartrain, in Norco, Louisiana, in St. Charles Parish, as shown on the enclosed drawings.

Hydrologic Unit Code: 08090203 (Eastern Louisiana Coastal)

CHARACTER OF WORK: Install and maintain rock breakwaters along the Lake Pontchartrain shoreline, as part of the LaBranche Shoreline Projection Project (PO-0194). Project implementation requires the excavation and deposition of 178,000 cubic yards of native material and deposition of 56,974 cubic yards of rock. Project activities would directly impact 87.4 acres of waterbottoms. The applicant has stated that no jurisdictional wetlands shall be impacted; therefore, compensatory mitigation has not been proposed.

The comment period for the Department of the Army Permit will close **20 days** from the date of this public notice. Written comments, including suggestions for modifications or objections to the proposed work, stating reasons thereof, are being solicited from anyone having interest in this permit and must be mailed so as to be received before or by the last day of the comment period. Letters and/or comments concerning the subject permit application must reference the Applicant's Name and the Permit Application Number and can be preferably emailed to the Corps of Engineers project manager listed above or forwarded to the Corps of Engineers at the address above, ATTENTION: REGULATORY DIVISION, RGE, Stephanie Castaing. This public notice is also available for review online at <https://go.usa.gov/xennJ>. Individuals or parties may also request an extension of time in which to comment on the proposed work by mail or preferably by emailing the specified project manager listed above. Any request for an extension of time to comment must be specific and substantively supportive of the requested extension and received by this office prior to the end of the initial comment period. The Branch Chief will review the request and the requestor will be promptly notified of the decision to grant or deny the request. If granted, the time extension will be continuous and inclusive of the initial comment period and will not exceed a total of 30 calendar days.

Corps of Engineers Permit Criteria

The decision whether to issue a permit will be based on an evaluation of the probable impacts, including cumulative impacts of the proposed activity on the public interest. That decision will reflect the national concern for both protection and utilization of important resources. The benefit which reasonably may be expected to accrue from the proposal must be balanced against its reasonably foreseeable detriments. All factors which may be relevant to the proposal will be considered including the cumulative effects thereof; among those are conservation, economics, aesthetics, general environmental concerns, wetlands, historic properties, fish and wildlife values, flood hazards, floodplain values, land use, navigation, shoreline erosion and accretion, recreation, water supply and conservation, water quality, energy needs, safety, food and fiber production, mineral needs, considerations of property ownership and, in general, the needs and welfare of the people.

The U.S. Army Corps of Engineers is soliciting comments from the public, federal, state, and local agencies and officials, Indian Tribes, and other interested parties to consider and evaluate the impacts of this proposed activity. Any comments received will be considered by the U.S. Army Corps of Engineers to determine whether to make, modify, condition, or deny a permit for this proposal. To make this decision, comments are used to assess impacts on endangered species, historic properties, water quality, general environmental effects, and other public interest factors listed above. Comments are used in the preparation of an Environmental Assessment and/or an Environmental Impact Statement pursuant to the National Environmental Policy Act. Comments are also used to determine the need for a public hearing and to determine the overall public interest of the proposed activity.

The New Orleans District has determined that additional information is required for NHPA compliance review. The possibility exists that the proposed work may damage or destroy presently unknown archeological, scientific, prehistorical, historical sites, or data. Issuance of this public notice solicits input from the State Archeologist and State Historic Preservation Officer regarding potential impacts to cultural resources.

The New Orleans District has determined that the activity is not likely to adversely affect the Gulf Sturgeon and the West Indian Manatee with the inclusion of the Standard Manatee Conditions for In-Water Activities, based on the Information & Planning Consultation for Endangered Species in Louisiana (IPaC), dated January 27, 2020, between the U.S. Army Corps of Engineers, New Orleans and U.S. Fish and Wildlife Service, Ecological Services Office.

Our initial finding is that the proposed work is Not Likely to Adversely Affect any species listed as endangered by the U.S. Departments of Commerce, nor affect any habitat designated as critical to the survival and recovery of such species.

This notice initiates the Essential Fish Habitat (EFH) consultation requirements of the Magnuson-Stevens Fishery Conservation and Management Act. The applicant's proposal would result in the destruction or alteration of 87.4 acres of EFH utilized by various life stages of red drum and penaeid shrimp. Our initial determination is that the proposed action would have no adverse impact on EFH or federally managed fisheries in the Gulf of Mexico. Our final determination relative to project impacts and the need for mitigation measures is subject to review by and coordination with the National Marine Fisheries Service.

If the proposed work involves deposits of dredged or fill material into navigable waters, the evaluation of the probable impacts will include the application of guidelines established by the Administrator of the Environmental Protection Agency. Also, a certification that the proposed activity will not violate applicable water quality standards will be required from the Department of Environmental Quality, Water Quality Certifications, before a permit is issued.

Any person may request, in writing, within the comment period specified in this notice, that a public hearing be held to consider this application. Requests for public hearings shall state, with particularity, the reasons for holding a public hearing.

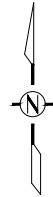
The applicant has certified that the proposed activity described in the application complies with and will be conducted in a manner that is consistent with the Louisiana Coastal Resources Program. The Department of the Army permit will not be issued unless the applicant received approval or a waiver of the Coastal Use Permit by the Department of Natural Resources.

You are requested to communicate the information contained in this notice to any other parties whom you deem likely to have interest in the matter.

Brad P. LaBorde
Chief, Eastern Evaluation Branch

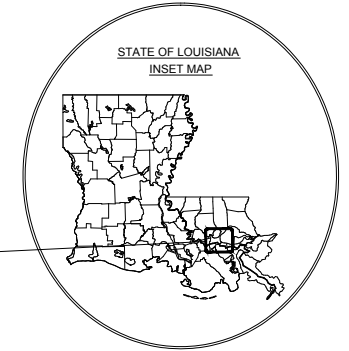
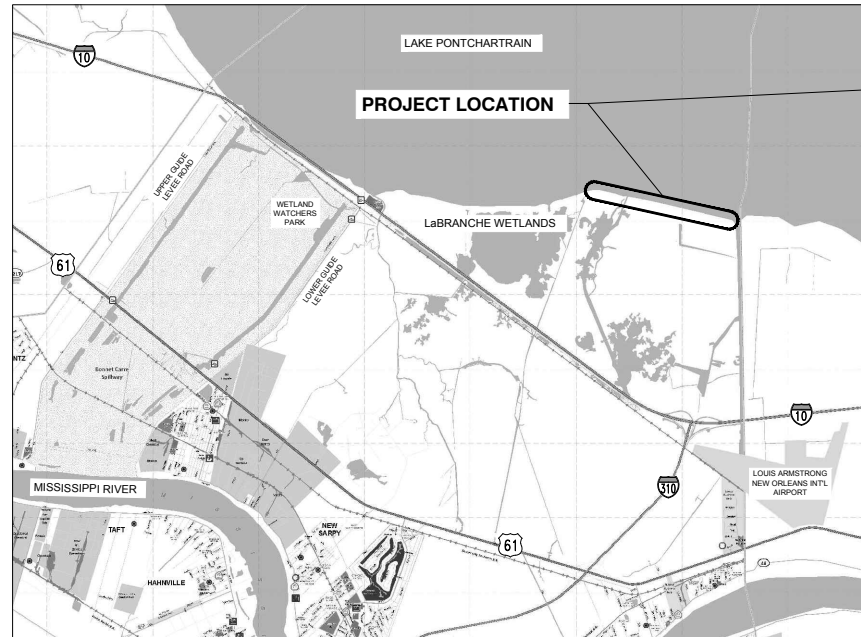
INDEX OF DRAWINGS

SHEET NO.	SHEET TITLE
001	VICINITY MAP
002	OVERALL PLAN
003	PLAN - SHEET 1 OF 10
004	PLAN - SHEET 2 OF 10
005	PLAN - SHEET 3 OF 10
006	PLAN - SHEET 4 OF 10
007	PLAN - SHEET 5 OF 10
008	PLAN - SHEET 6 OF 10
009	PLAN - SHEET 7 OF 10
010	PLAN - SHEET 8 OF 10
011	PLAN - SHEET 9 OF 10
012	PLAN - SHEET 10 OF 10
013	TYPICAL SECTIONS
014	DETAILS - 1 OF 2
015	DETAILS - 2 OF 2



STATE OF LOUISIANA
COASTAL PROTECTION AND RESTORATION AUTHORITY
LaBRANCHE SHORELINE PROTECTION

PO-0194

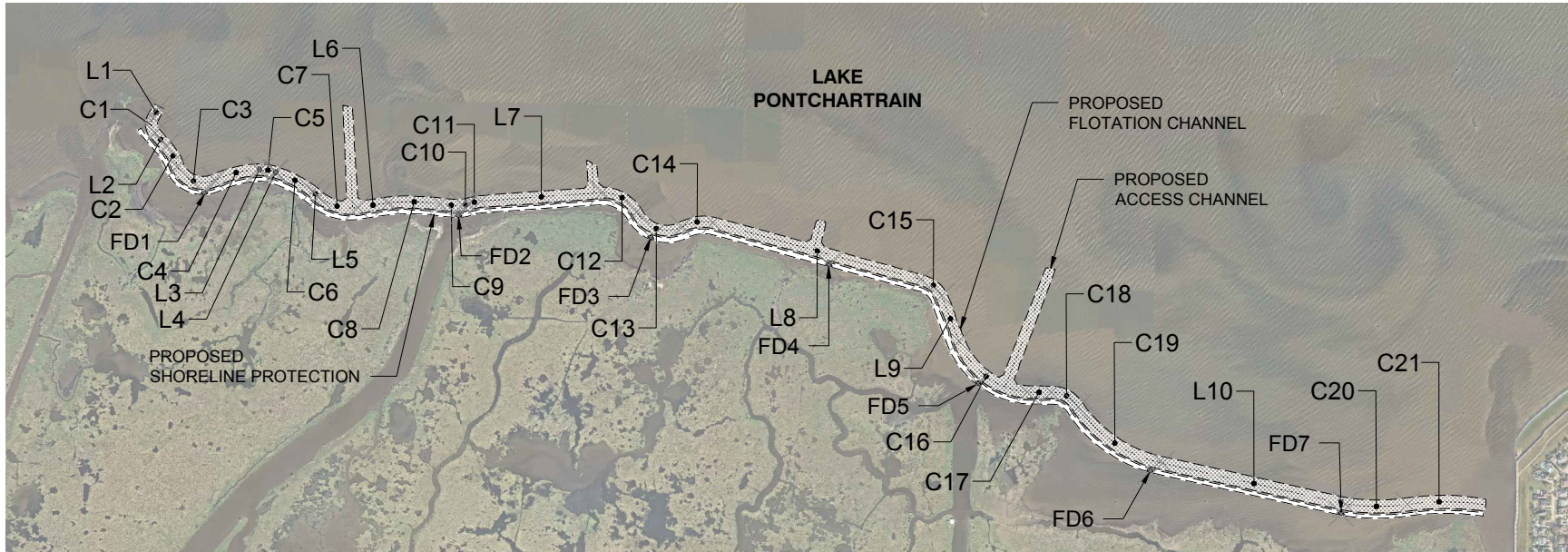


SURVEY NOTES

- BATHYMETRIC, TOPOGRAPHIC, AND MAGNETOMETER SURVEY PERFORMED IN OCTOBER 2021 BY: FUGRO USA LANG, INC. 226 DULLES DR. SUITE 110 LAFAYETTE, LA 70506 PHONE: (337) 237-1300
- SURVEY VERTICAL DATUM = NORTH AMERICAN VERTICAL DATUM OF 1988 (NAVD 88) - GEOID 12A.
- SURVEY HORIZONTAL DATUM = STATE PLANE - NORTH AMERICAN DATUM OF 1983 (NAD 83), LOUISIANA SOUTH ZONE, US SURVEY FEET.
- CONTOUR INTERVAL SHOWN IS 1 FOOT.



APPLICATION BY: MOFFATT & NICHOL	 301 MAIN STREET, SUITE 800, BATON ROUGE, LA 70801	COASTAL PROTECTION AND RESTORATION AUTHORITY 150 TERRACE STREET BATON ROUGE, LOUISIANA 70802	LaBRANCHE SHORELINE PROTECTION	VICINITY MAP
DRAWN BY: GE	DESIGNED BY: GS	APPROVED BY: CW	STATE PROJECT NUMBER: PO-0194 FEDERAL PROJECT NUMBER: N/A	DATE: 2022-03-14 SHEET 1 OF 15



COORDINATE TABLE			
NO.	DISTANCE	LATITUDE	LONGITUDE
L1	101.61	N30°03'22"	W90°18'57"
C1	139.52	N30°03'21"	W90°18'57"
L2	149.85	N30°03'19"	W90°18'57"
C2	201.44	N30°03'18"	W90°18'56"
C3	376.60	N30°03'17"	W90°18'55"
C4	383.60	N30°03'15"	W90°18'51"
L3	21.10	N30°02'47"	W90°16'56"
C5	122.84	N30°02'47"	W90°17'02"
L4	12.43	N30°02'51"	W90°17'19"
C6	347.99	N30°02'56"	W90°17'27"
L5	71.33	N30°02'57"	W90°17'30"
C7	357.03	N30°02'57"	W90°17'32"
L6	263.89	N30°03'01"	W90°17'39"
C8	442.60	N30°03'05"	W90°17'41"
C9	192.14	N30°03'06"	W90°17'43"
C10	50.61	N30°03'11"	W90°18'03"

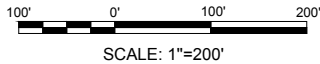
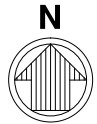
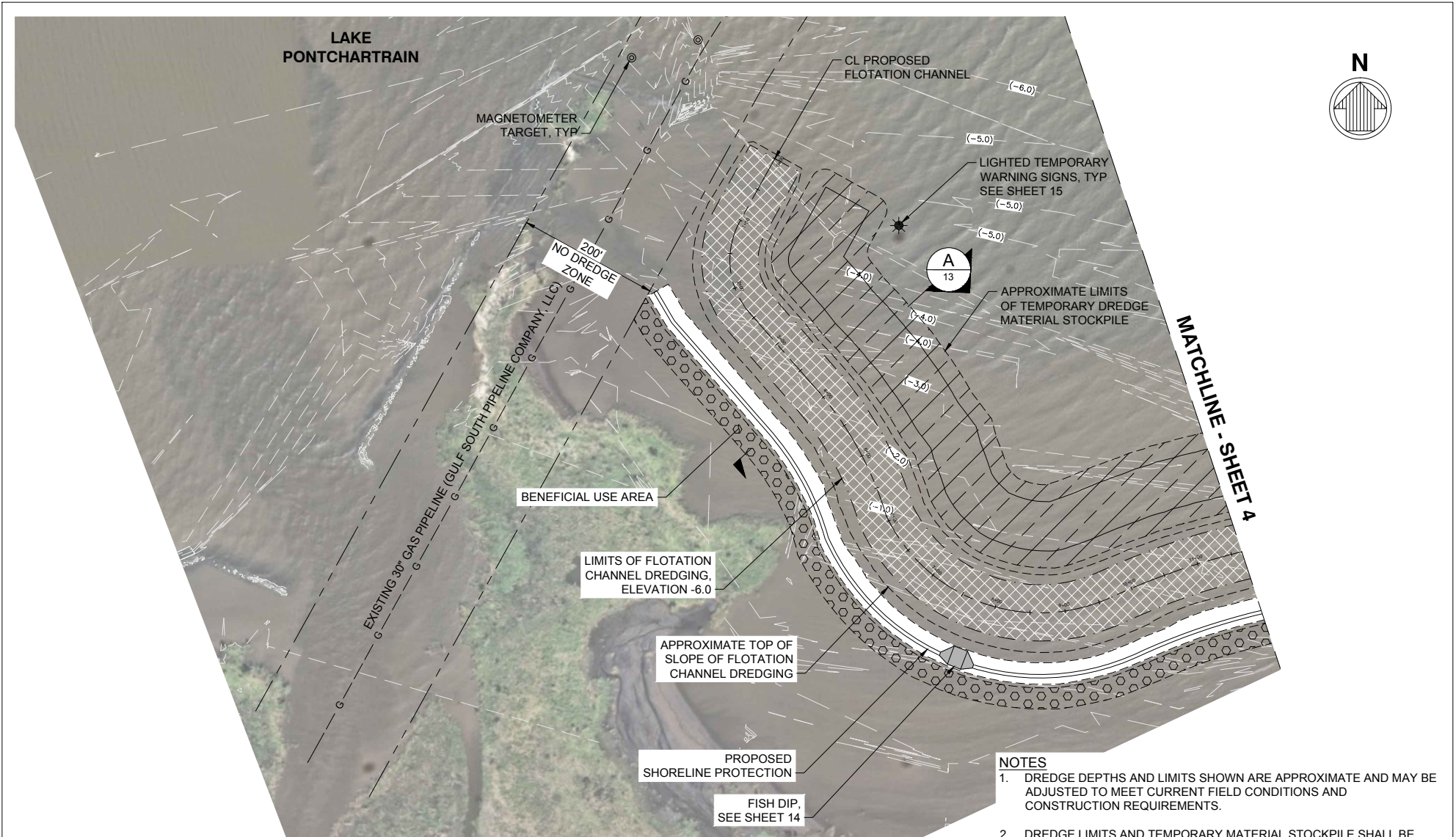
COORDINATE TABLE			
NO.	DISTANCE	LATITUDE	LONGITUDE
C11	109.32	N30°03'11"	W90°18'06"
L7	1040.45	N30°03'12"	W90°18'10"
C12	355.74	N30°03'14"	W90°18'14"
C13	448.53	N30°03'13"	W90°18'25"
C14	276.64	N30°03'13"	W90°18'27"
L8	1839.49	N30°03'13"	W90°18'27"
C15	236.07	N30°03'13"	W90°18'29"
L9	414.72	N30°03'13"	W90°18'34"
C16	762.76	N30°03'13"	W90°18'37"
C17	202.02	N30°03'14"	W90°18'41"
C18	278.86	N30°03'14"	W90°18'42"
C19	884.27	N30°03'16"	W90°18'45"
L10	1603.39	N30°03'16"	W90°18'45"
C20	532.10	N30°03'16"	W90°18'47"
C21	661.89	N30°03'16"	W90°18'47"

QUANTITY TABLE			
EXCAVATION	VOLUME		LENGTH ALONG CL
ACCESS CHANNEL	14,000 C.Y.		2,320 FT
FLOTATION CHANNEL	164,000 C.Y.		12,881 FT
FILL	VOLUME		
TEMPORARY FLOTATION CHANNEL STOCKPILE	96,000 C.Y.		16,243 FT
PROPOSED SHORELINE PROTECTION	56,974 C.Y.		12,815 FT
BENEFICIAL USE	82,000 C.Y.		12,697 FT

FISH DIP COORDINATE TABLE		
NO.	LATITUDE	LONGITUDE
FD1	N30°03'14"	W90°18'52"
FD2	N30°03'12"	W90°18'28"
FD3	N30°03'10"	W90°18'09"
FD4	N30°03'08"	W90°17'52"
FD5	N30°02'58"	W90°17'37"
FD6	N30°02'50"	W90°17'21"
FD7	N30°02'46"	W90°17'02"

NOTE:
 A TOTAL OF 178,000 CY WILL BE EXCAVATED FROM THE ACCESS AND FLOTATION CHANNELS. IT IS ANTICIPATED THAT 96,000 CY WILL BE BACKFILLED IN THE ACCESS CHANNELS AT THE END OF CONSTRUCTION, WHILE 82,000 CY EXCAVATED FROM WITHIN THE PROPOSED FLOTATION CHANNEL LIMITS WILL BE BENEFICIALLY PLACED BEHIND THE SHORELINE PROTECTION.

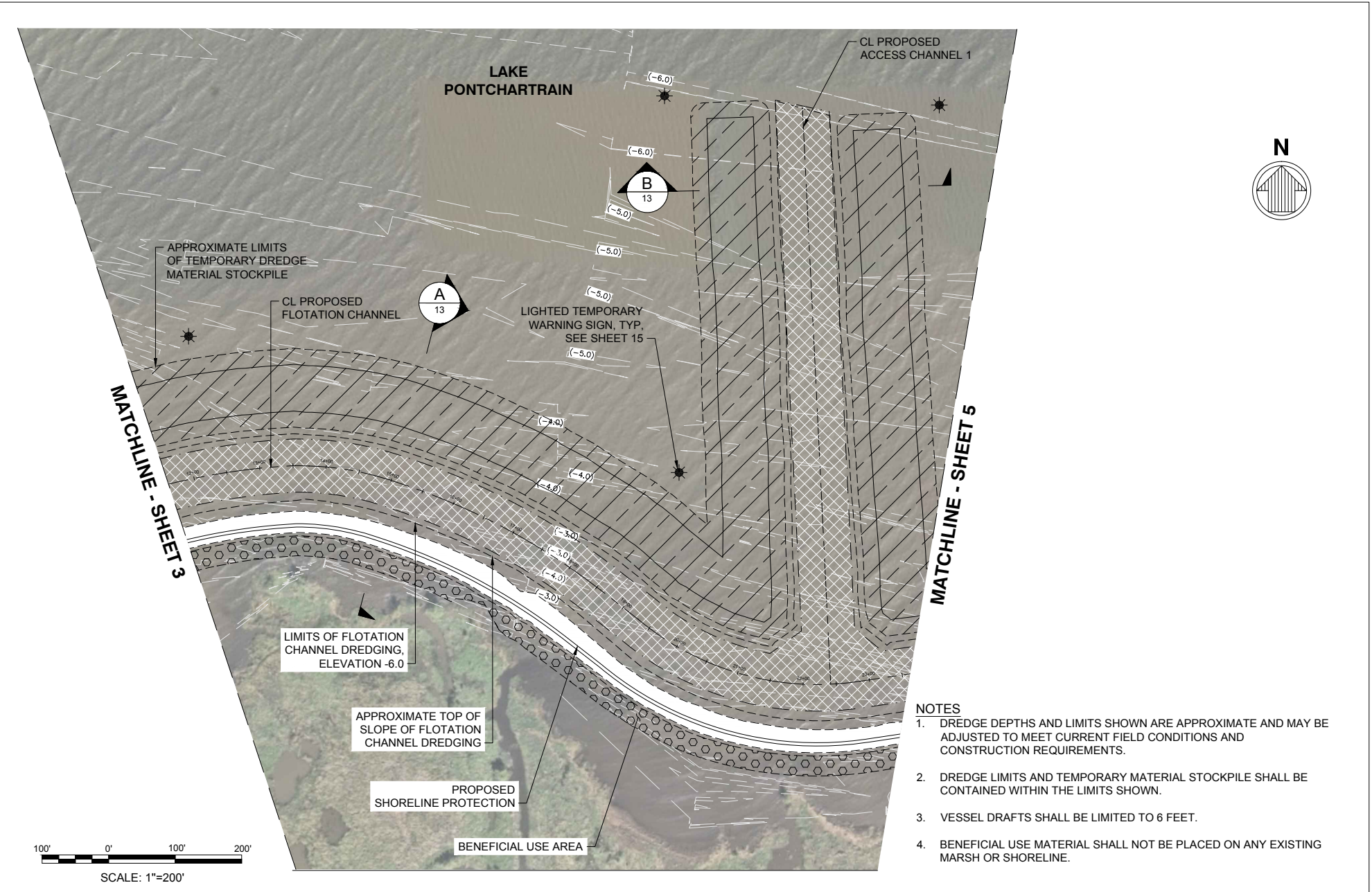
APPLICATION BY: MOFFATT & NICHOL	 301 MAIN STREET, SUITE 800, BATON ROUGE, LA 70801	COASTAL PROTECTION AND RESTORATION AUTHORITY 150 TERRACE STREET BATON ROUGE, LOUISIANA 70802	LaBRANCHE SHORELINE PROTECTION	OVERALL PLAN
			STATE PROJECT NUMBER: PO-0194	DATE: 2022-03-14
DRAWN BY: GE	DESIGNED BY: GS	APPROVED BY: CW	FEDERAL PROJECT NUMBER: N/A	SHEET 2 OF 15



NOTES

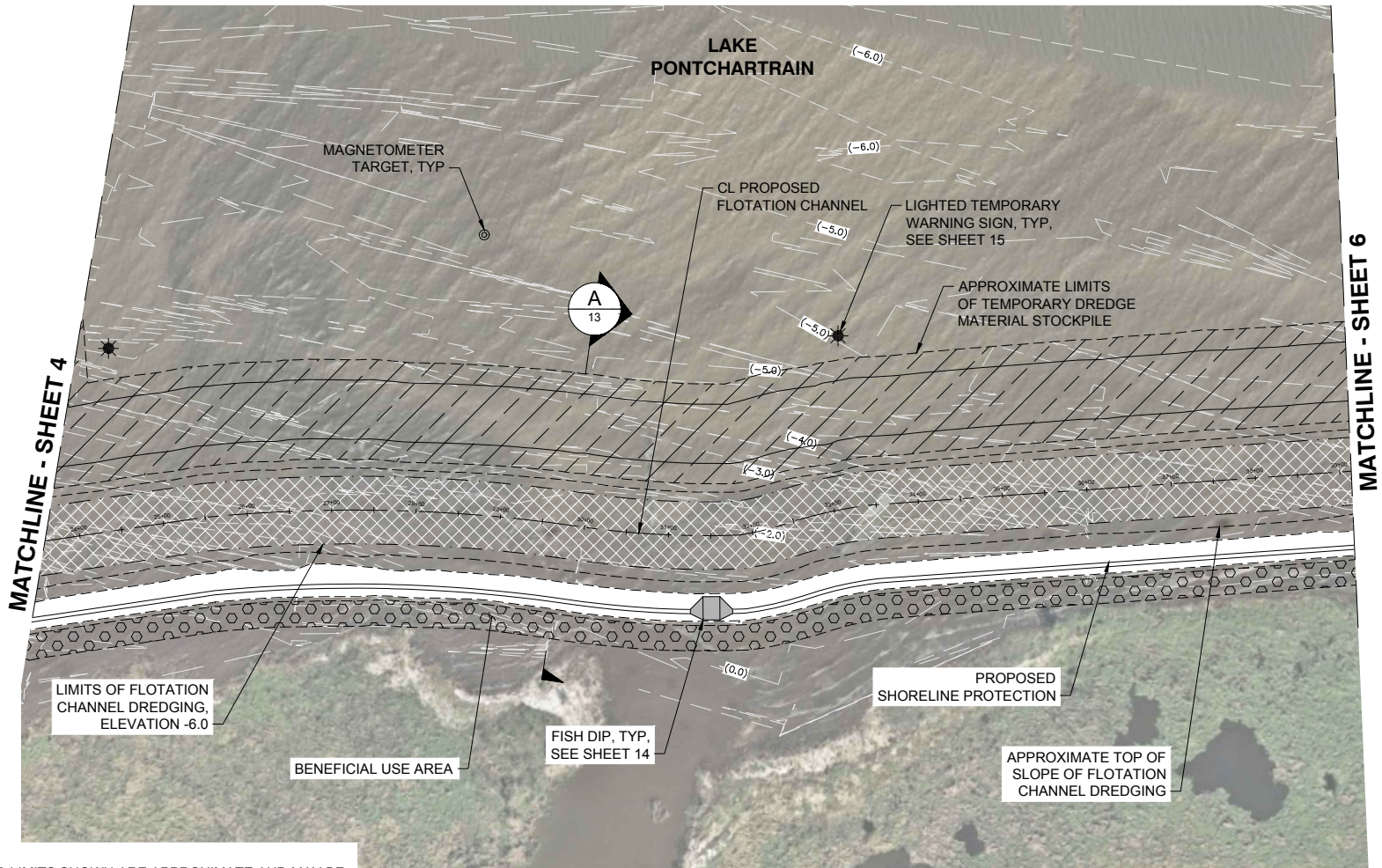
1. DREDGE DEPTHS AND LIMITS SHOWN ARE APPROXIMATE AND MAY BE ADJUSTED TO MEET CURRENT FIELD CONDITIONS AND CONSTRUCTION REQUIREMENTS.
2. DREDGE LIMITS AND TEMPORARY MATERIAL STOCKPILE SHALL BE CONTAINED WITHIN THE LIMITS SHOWN.
3. VESSEL DRAFTS SHALL BE LIMITED TO 6 FEET.
4. BENEFICIAL USE MATERIAL SHALL NOT BE PLACED ON ANY EXISTING MARSH OR SHORELINE.

APPLICATION BY: MOFFATT & NICHOL	 301 MAIN STREET, SUITE 800, BATON ROUGE, LA 70801	COASTAL PROTECTION AND RESTORATION AUTHORITY 150 TERRACE STREET BATON ROUGE, LOUISIANA 70802	LaBRANCHE SHORELINE PROTECTION	PLAN - SHEET 1 OF 10
DRAWN BY: GE	DESIGNED BY: GS	APPROVED BY: CW	STATE PROJECT NUMBER: PO-0194 FEDERAL PROJECT NUMBER: N/A	DATE: 2022-03-14 SHEET 3 OF 15



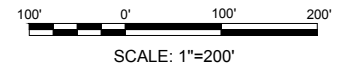
- NOTES**
1. DREDGE DEPTHS AND LIMITS SHOWN ARE APPROXIMATE AND MAY BE ADJUSTED TO MEET CURRENT FIELD CONDITIONS AND CONSTRUCTION REQUIREMENTS.
 2. DREDGE LIMITS AND TEMPORARY MATERIAL STOCKPILE SHALL BE CONTAINED WITHIN THE LIMITS SHOWN.
 3. VESSEL DRAFTS SHALL BE LIMITED TO 6 FEET.
 4. BENEFICIAL USE MATERIAL SHALL NOT BE PLACED ON ANY EXISTING MARSH OR SHORELINE.


APPLICATION BY: MOFFATT & NICHOL	 301 MAIN STREET, SUITE 800, BATON ROUGE, LA 70801	COASTAL PROTECTION AND RESTORATION AUTHORITY 150 TERRACE STREET BATON ROUGE, LOUISIANA 70802	LaBRANCHE SHORELINE PROTECTION	PLAN - SHEET 2 OF 10
DRAWN BY: GE	DESIGNED BY: GS	APPROVED BY: CW	STATE PROJECT NUMBER: PO-0194 FEDERAL PROJECT NUMBER: N/A	DATE: 2022-03-14 SHEET 4 OF 15

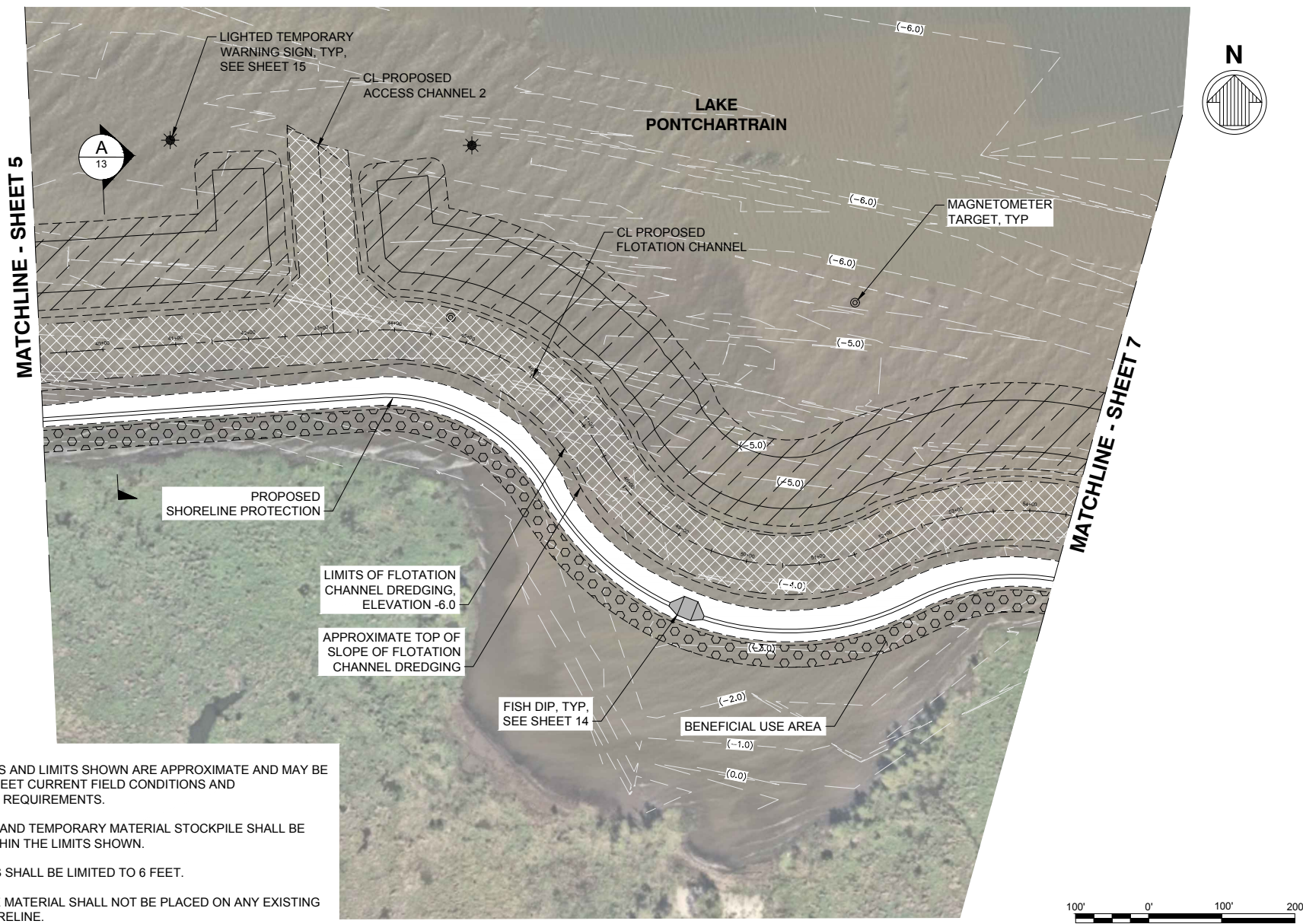


NOTES

1. DREDGE DEPTHS AND LIMITS SHOWN ARE APPROXIMATE AND MAY BE ADJUSTED TO MEET CURRENT FIELD CONDITIONS AND CONSTRUCTION REQUIREMENTS.
2. DREDGE LIMITS AND TEMPORARY MATERIAL STOCKPILE SHALL BE CONTAINED WITHIN THE LIMITS SHOWN.
3. VESSEL DRAFTS SHALL BE LIMITED TO 6 FEET.
4. BENEFICIAL USE MATERIAL SHALL NOT BE PLACED ON ANY EXISTING MARSH OR SHORELINE.

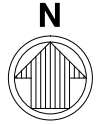
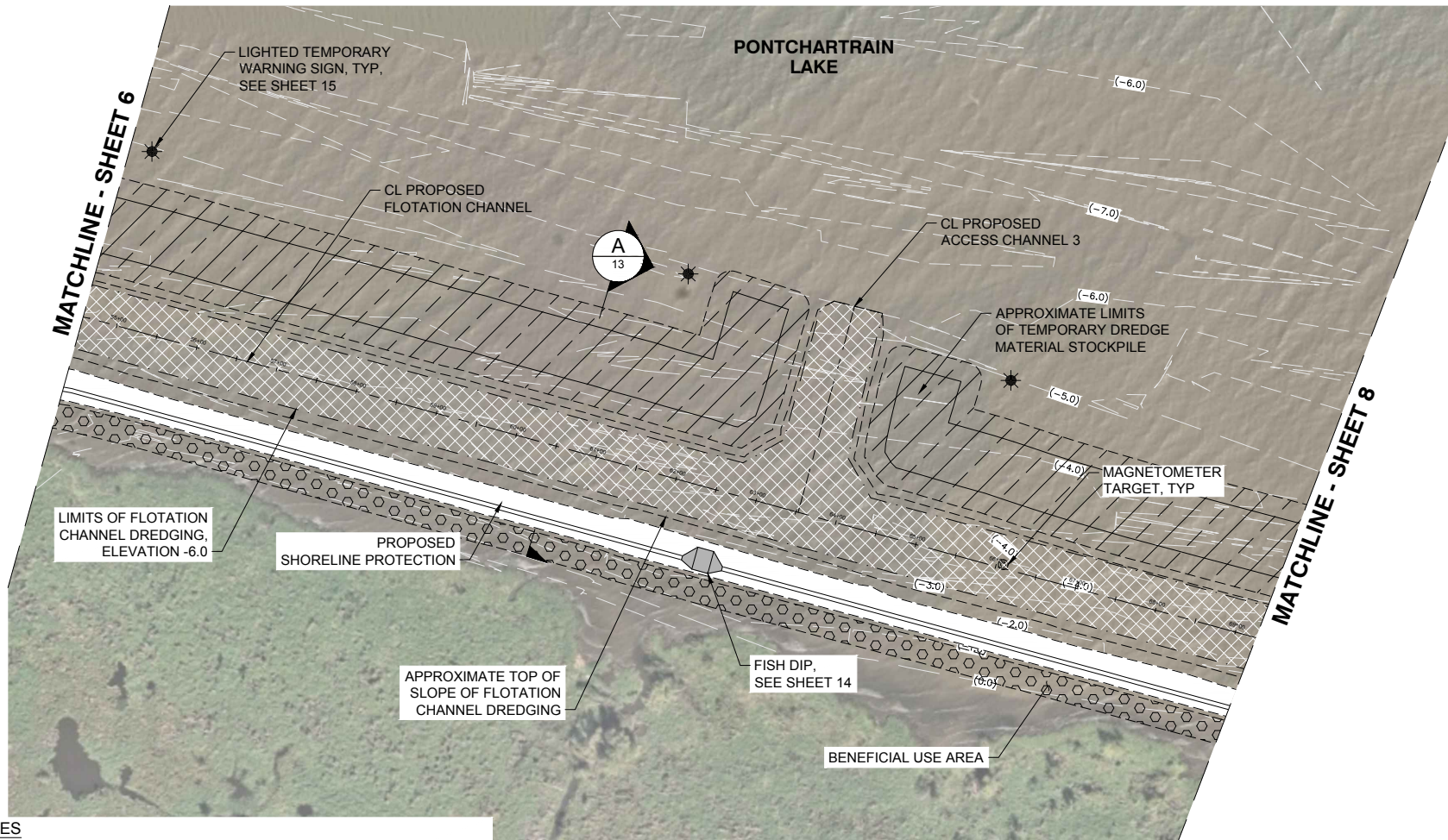


APPLICATION BY: MOFFATT & NICHOL	 301 MAIN STREET, SUITE 800, BATON ROUGE, LA 70801	COASTAL PROTECTION AND RESTORATION AUTHORITY 150 TERRACE STREET BATON ROUGE, LOUISIANA 70802	LaBRANCHE SHORELINE PROTECTION	PLAN - SHEET 3 OF 10
DRAWN BY: GE	DESIGNED BY: GS	APPROVED BY: CW	STATE PROJECT NUMBER: PO-194	DATE: 2022-03-14
DRAWN BY: GE	DESIGNED BY: GS	APPROVED BY: CW	FEDERAL PROJECT NUMBER: N/A	SHEET 5 OF 15



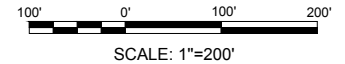
- NOTES**
1. DREDGE DEPTHS AND LIMITS SHOWN ARE APPROXIMATE AND MAY BE ADJUSTED TO MEET CURRENT FIELD CONDITIONS AND CONSTRUCTION REQUIREMENTS.
 2. DREDGE LIMITS AND TEMPORARY MATERIAL STOCKPILE SHALL BE CONTAINED WITHIN THE LIMITS SHOWN.
 3. VESSEL DRAFTS SHALL BE LIMITED TO 6 FEET.
 4. BENEFICIAL USE MATERIAL SHALL NOT BE PLACED ON ANY EXISTING MARSH OR SHORELINE.


APPLICATION BY: MOFFATT & NICHOL	 301 MAIN STREET, SUITE 800, BATON ROUGE, LA 70801	COASTAL PROTECTION AND RESTORATION AUTHORITY 150 TERRACE STREET BATON ROUGE, LOUISIANA 70802	LaBRANCHE SHORELINE PROTECTION	PLAN - SHEET 4 OF 10
DRAWN BY: GE	DESIGNED BY: GS	APPROVED BY: CW	STATE PROJECT NUMBER: PO-0194 FEDERAL PROJECT NUMBER: N/A	DATE: 2022-03-14 SHEET 6 OF 15

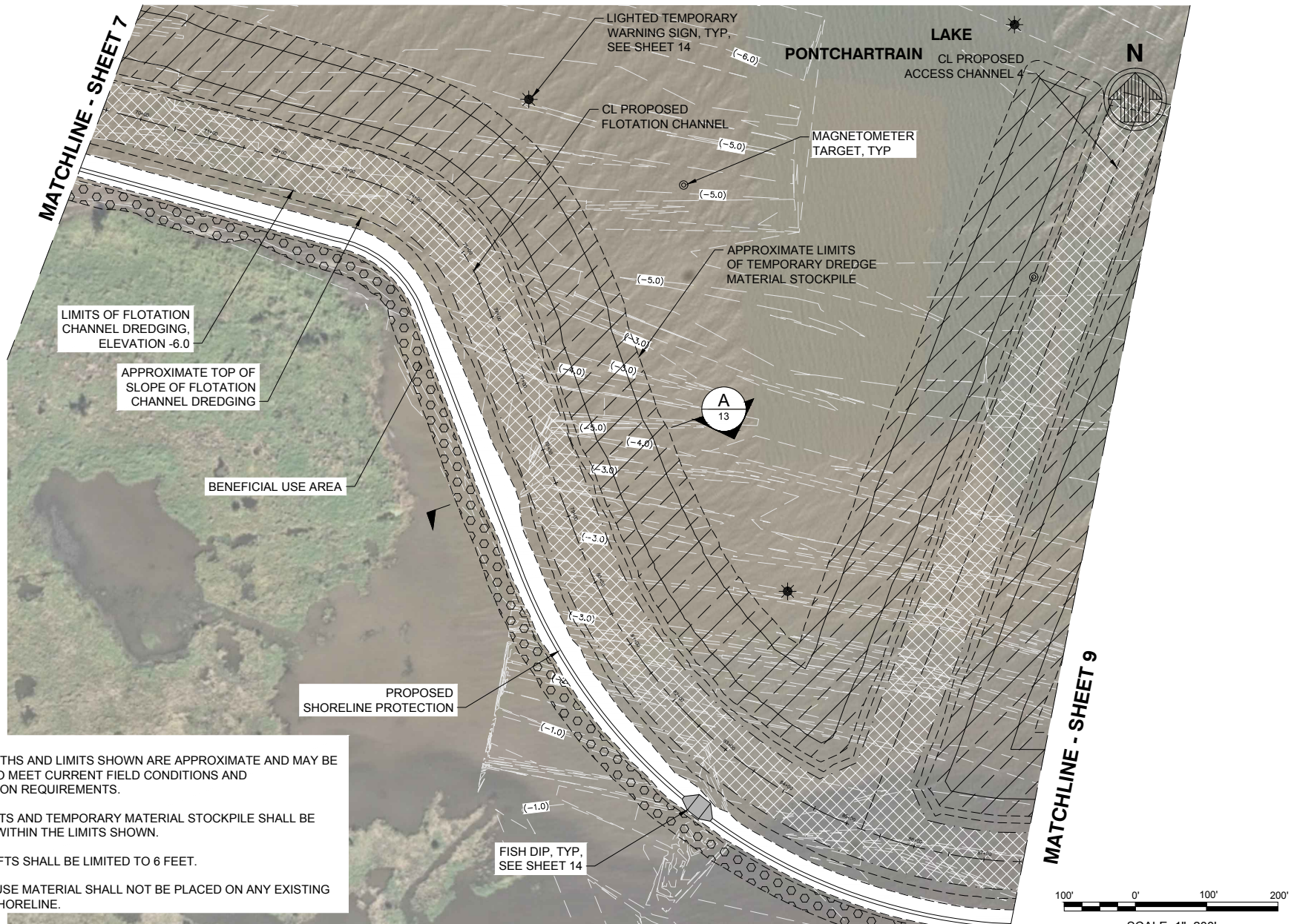


NOTES

1. DREDGE DEPTHS AND LIMITS SHOWN ARE APPROXIMATE AND MAY BE ADJUSTED TO MEET CURRENT FIELD CONDITIONS AND CONSTRUCTION REQUIREMENTS.
2. DREDGE LIMITS AND TEMPORARY MATERIAL STOCKPILE SHALL BE CONTAINED WITHIN THE LIMITS SHOWN.
3. VESSEL DRAFTS SHALL BE LIMITED TO 6 FEET.
4. BENEFICIAL USE MATERIAL SHALL NOT BE PLACED ON ANY EXISTING MARSH OR SHORELINE.



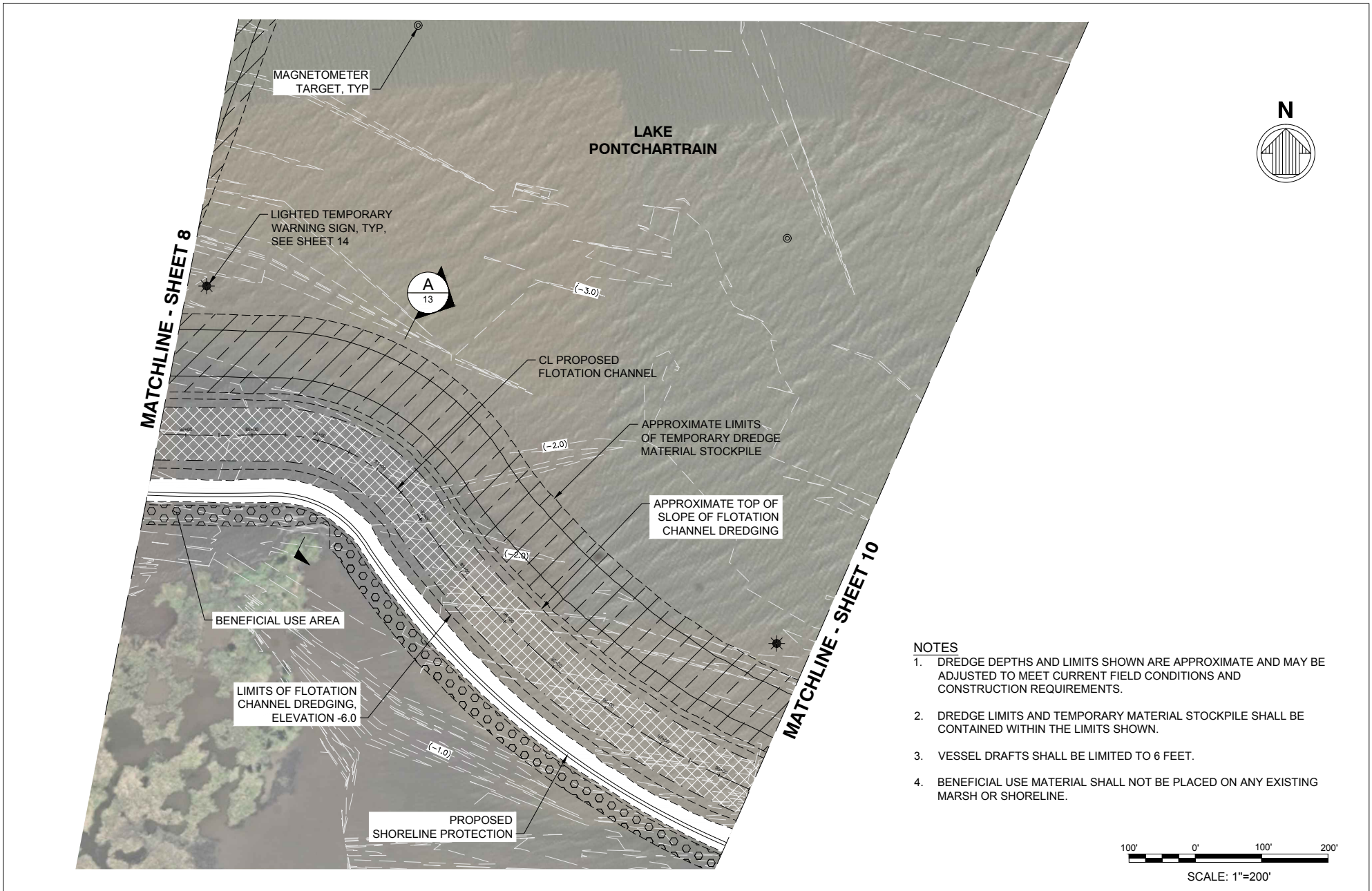
APPLICATION BY: MOFFATT & NICHOL	 301 MAIN STREET, SUITE 800, BATON ROUGE, LA 70801	COASTAL PROTECTION AND RESTORATION AUTHORITY 150 TERRACE STREET BATON ROUGE, LOUISIANA 70802	LaBRANCHE SHORELINE PROTECTION	PLAN - SHEET 5 OF 10
DRAWN BY: GE	DESIGNED BY: GS	APPROVED BY: CW	STATE PROJECT NUMBER: PO-0194 FEDERAL PROJECT NUMBER: N/A	DATE: 2022-03-14 SHEET 7 OF 15




NOTES

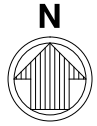
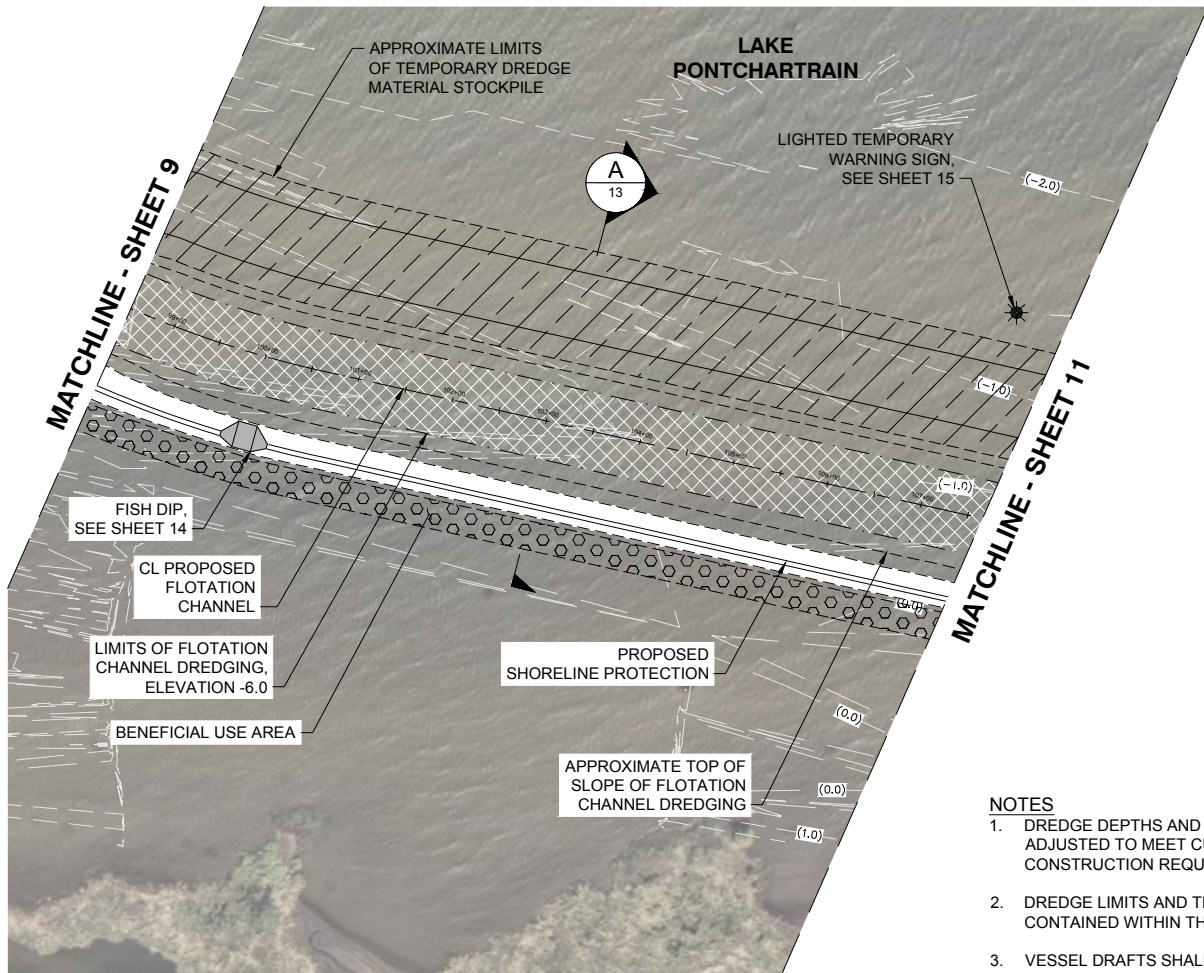
1. DREDGE DEPTHS AND LIMITS SHOWN ARE APPROXIMATE AND MAY BE ADJUSTED TO MEET CURRENT FIELD CONDITIONS AND CONSTRUCTION REQUIREMENTS.
2. DREDGE LIMITS AND TEMPORARY MATERIAL STOCKPILE SHALL BE CONTAINED WITHIN THE LIMITS SHOWN.
3. VESSEL DRAFTS SHALL BE LIMITED TO 6 FEET.
4. BENEFICIAL USE MATERIAL SHALL NOT BE PLACED ON ANY EXISTING MARSH OR SHORELINE.

APPLICATION BY: MOFFATT & NICHOL	 301 MAIN STREET, SUITE 800, BATON ROUGE, LA 70801	COASTAL PROTECTION AND RESTORATION AUTHORITY 150 TERRACE STREET BATON ROUGE, LOUISIANA 70802	LaBRANCHE SHORELINE PROTECTION	PLAN - SHEET 6 OF 10
DRAWN BY: GE	DESIGNED BY: GS	APPROVED BY: CW	STATE PROJECT NUMBER: PO-0194 FEDERAL PROJECT NUMBER: N/A	DATE: 2022-03-14 SHEET 8 OF 15



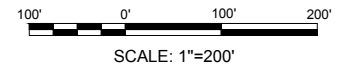
- NOTES**
1. DREDGE DEPTHS AND LIMITS SHOWN ARE APPROXIMATE AND MAY BE ADJUSTED TO MEET CURRENT FIELD CONDITIONS AND CONSTRUCTION REQUIREMENTS.
 2. DREDGE LIMITS AND TEMPORARY MATERIAL STOCKPILE SHALL BE CONTAINED WITHIN THE LIMITS SHOWN.
 3. VESSEL DRAFTS SHALL BE LIMITED TO 6 FEET.
 4. BENEFICIAL USE MATERIAL SHALL NOT BE PLACED ON ANY EXISTING MARSH OR SHORELINE.


APPLICATION BY: MOFFATT & NICHOL	 301 MAIN STREET, SUITE 800, BATON ROUGE, LA 70801	COASTAL PROTECTION AND RESTORATION AUTHORITY 150 TERRACE STREET BATON ROUGE, LOUISIANA 70802	LaBRANCHE SHORELINE PROTECTION STATE PROJECT NUMBER: PO-0194	PLAN - SHEET 7 OF 10 DATE: 2022-03-14
DRAWN BY: GE	DESIGNED BY: GS	APPROVED BY: CW	FEDERAL PROJECT NUMBER: N/A	SHEET 9 OF 15

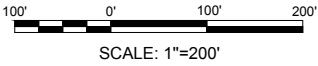
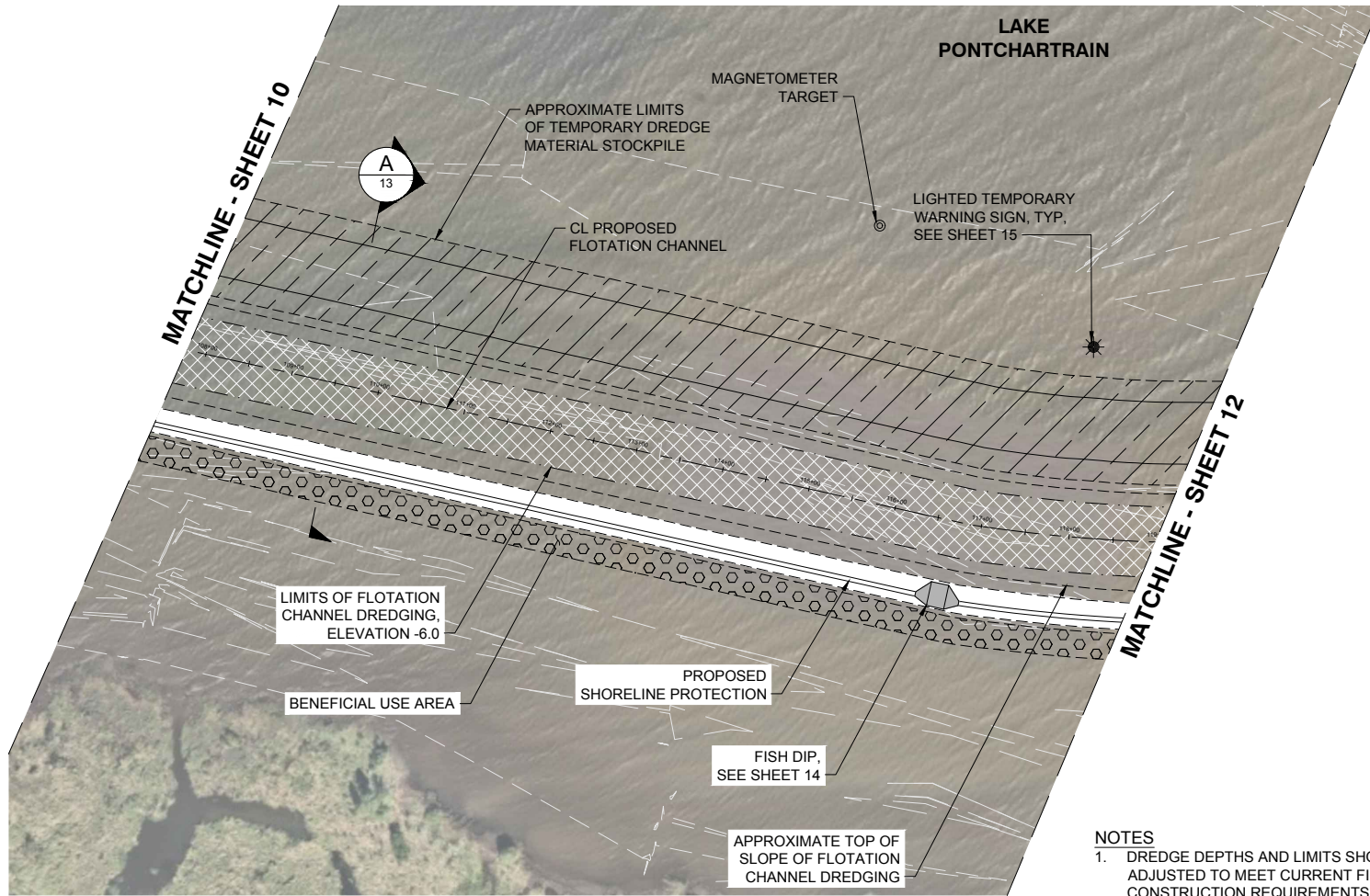


NOTES

1. DREDGE DEPTHS AND LIMITS SHOWN ARE APPROXIMATE AND MAY BE ADJUSTED TO MEET CURRENT FIELD CONDITIONS AND CONSTRUCTION REQUIREMENTS.
2. DREDGE LIMITS AND TEMPORARY MATERIAL STOCKPILE SHALL BE CONTAINED WITHIN THE LIMITS SHOWN.
3. VESSEL DRAFTS SHALL BE LIMITED TO 6 FEET.
4. BENEFICIAL USE MATERIAL SHALL NOT BE PLACED ON ANY EXISTING MARSH OR SHORELINE.




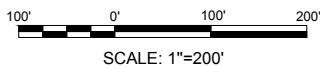
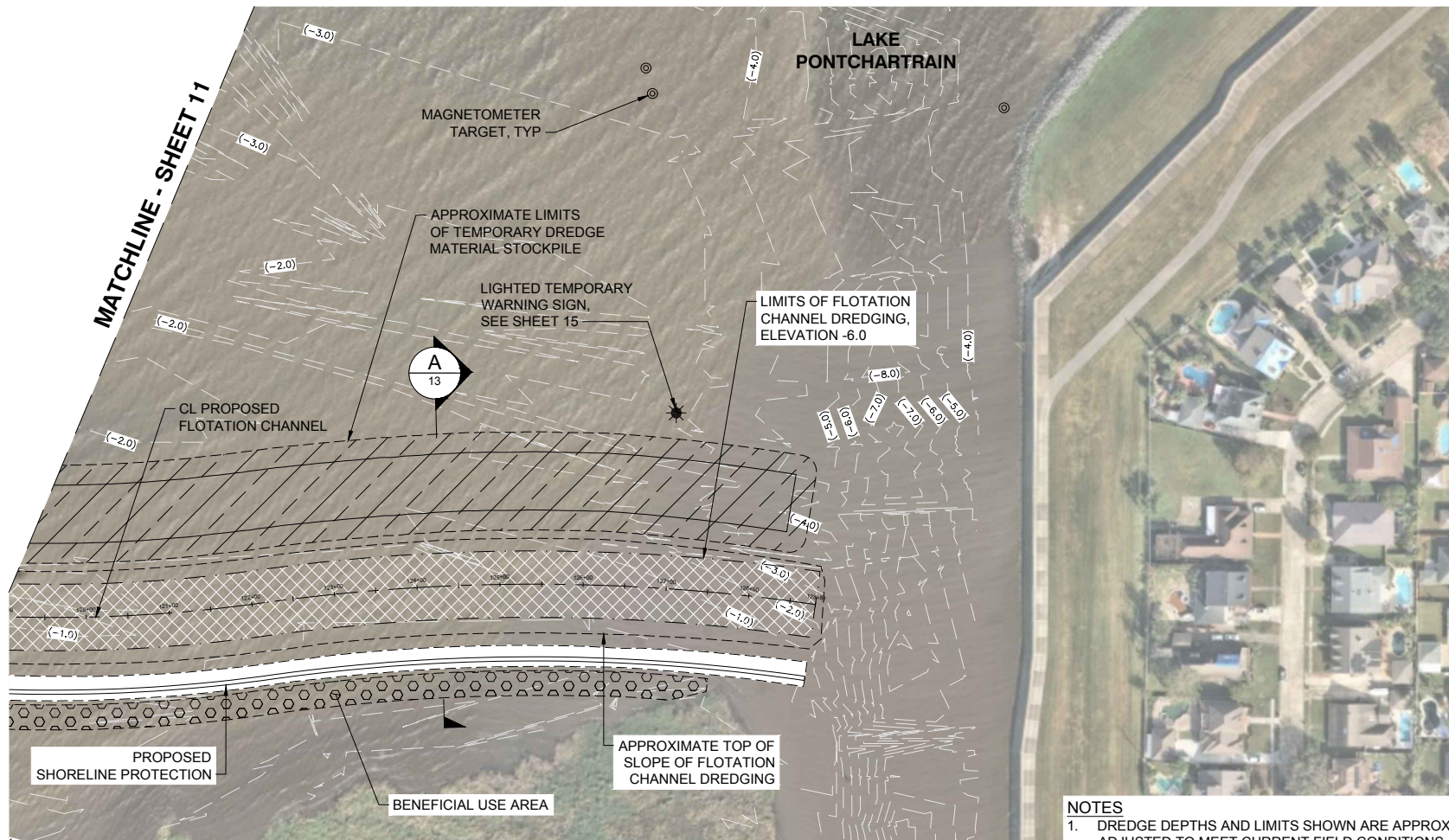
APPLICATION BY: MOFFATT & NICHOL	 301 MAIN STREET, SUITE 800, BATON ROUGE, LA 70801	COASTAL PROTECTION AND RESTORATION AUTHORITY 150 TERRACE STREET BATON ROUGE, LOUISIANA 70802	LaBRANCHE SHORELINE PROTECTION	PLAN - SHEET 8 OF 10
DRAWN BY: GE	DESIGNED BY: GS	APPROVED BY: CW	STATE PROJECT NUMBER: PO-0194 FEDERAL PROJECT NUMBER: N/A	DATE: 2022-03-14 SHEET 10 OF 15



NOTES


1. DREDGE DEPTHS AND LIMITS SHOWN ARE APPROXIMATE AND MAY BE ADJUSTED TO MEET CURRENT FIELD CONDITIONS AND CONSTRUCTION REQUIREMENTS.
2. DREDGE LIMITS AND TEMPORARY MATERIAL STOCKPILE SHALL BE CONTAINED WITHIN THE LIMITS SHOWN.
3. VESSEL DRAFTS SHALL BE LIMITED TO 6 FEET.
4. BENEFICIAL USE MATERIAL SHALL NOT BE PLACED ON ANY EXISTING MARSH OR SHORELINE.

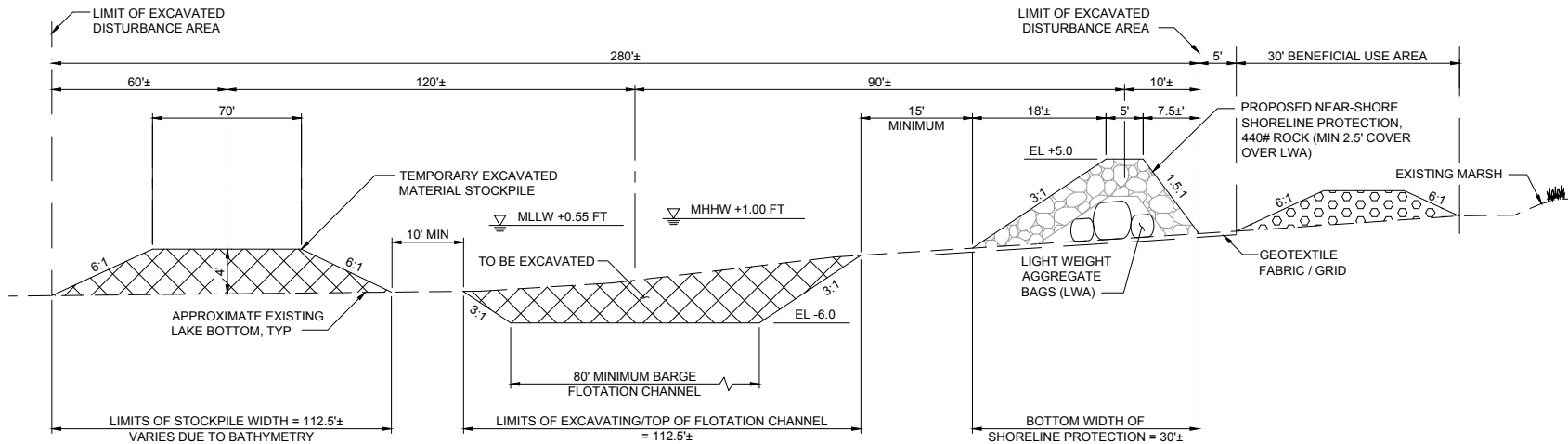
APPLICATION BY: MOFFATT & NICHOL	 301 MAIN STREET, SUITE 800, BATON ROUGE, LA 70801	COASTAL PROTECTION AND RESTORATION AUTHORITY 150 TERRACE STREET BATON ROUGE, LOUISIANA 70802	LaBRANCHE SHORELINE PROTECTION	PLAN - SHEET 9 OF 10
DRAWN BY: GE	DESIGNED BY: GS	APPROVED BY: CW	STATE PROJECT NUMBER: PO-0194	DATE: 2022-03-14
FEDERAL PROJECT NUMBER: N/A			SHEET 11 OF 15	



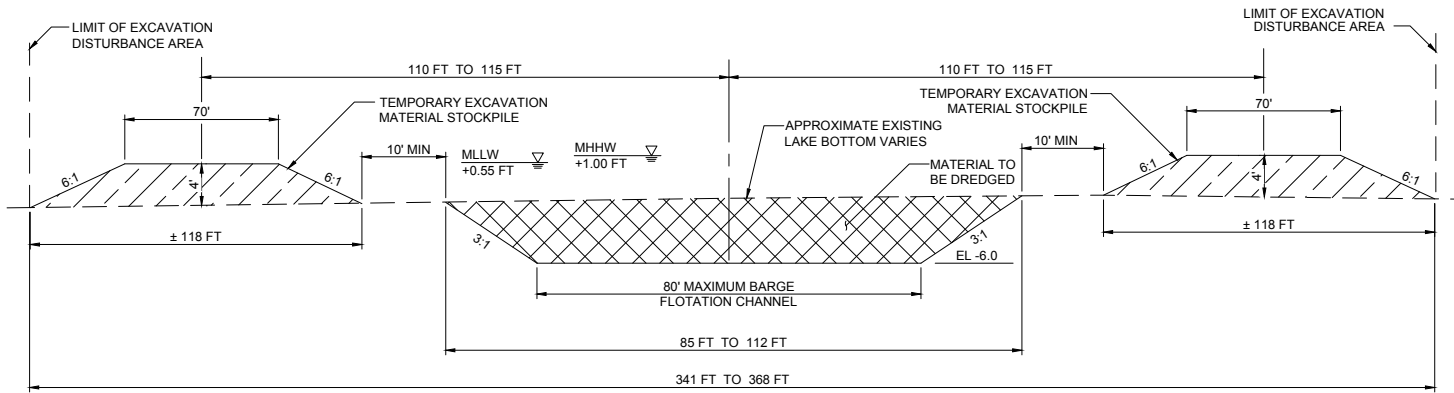
NOTES

1. DREDGE DEPTHS AND LIMITS SHOWN ARE APPROXIMATE AND MAY BE ADJUSTED TO MEET CURRENT FIELD CONDITIONS AND CONSTRUCTION REQUIREMENTS.
2. DREDGE LIMITS AND TEMPORARY MATERIAL STOCKPILE SHALL BE CONTAINED WITHIN THE LIMITS SHOWN.
3. VESSEL DRAFTS SHALL BE LIMITED TO 6 FEET.
4. BENEFICIAL USE MATERIAL SHALL NOT BE PLACED ON ANY EXISTING MARSH OR SHORELINE.

APPLICATION BY: MOFFATT & NICHOL	 301 MAIN STREET, SUITE 800, BATON ROUGE, LA 70801	COASTAL PROTECTION AND RESTORATION AUTHORITY 150 TERRACE STREET BATON ROUGE, LOUISIANA 70802	LaBRANCHE SHORELINE PROTECTION	PLAN - SHEET 10 OF 10
DRAWN BY: GE	DESIGNED BY: GS	APPROVED BY: CW	STATE PROJECT NUMBER: PO-0194	DATE: 2022-03-14
FEDERAL PROJECT NUMBER: N/A			SHEET 12 OF 15	



A BREAKWATER, FLOTATION CHANNEL AND BENEFICIAL AREA - NEAR SHORE TYPICAL SECTION
NOT TO SCALE

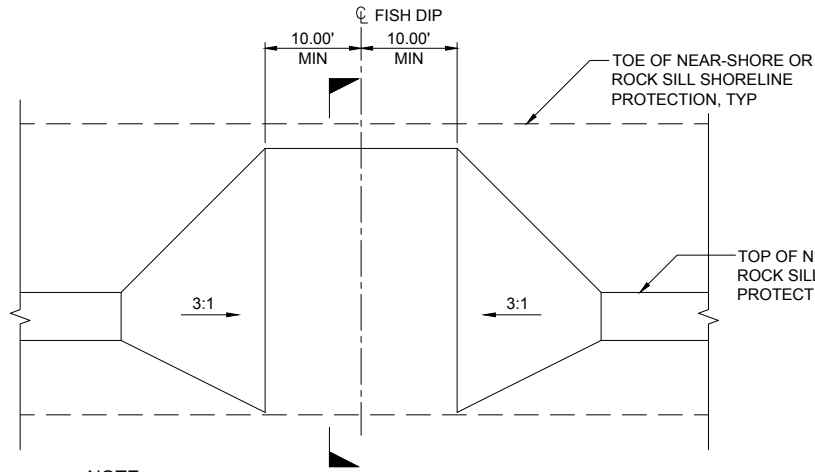


B ACCESS CHANNEL - TYPICAL SECTION
NOT TO SCALE

NOTES

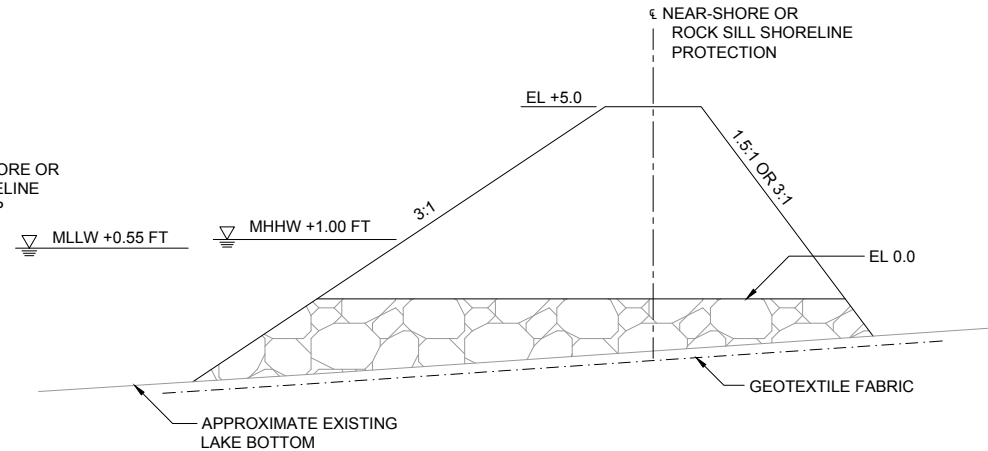
1. ELEVATIONS SHOWN REFERENCE NAVD 88.
2. THE CONTRACTOR SHALL PERFORM A MAGNETOMETER SURVEY OF THE ACCESS AND FLOTATION CHANNEL PRIOR TO ANY DREDGING ACTIVITIES.
3. QUANTITIES AND AREAS SHOWN ON THE PLANS ARE BASED ON CONDITIONS AS SURVEYED, SEE SHEET 1 FOR ADDITIONAL SURVEY INFORMATION.
4. VESSEL DRAFTS SHALL BE LIMITED TO 6 FEET.

APPLICATION BY: MOFFATT & NICHOL	 301 MAIN STREET, SUITE 800, BATON ROUGE, LA 70801	COASTAL PROTECTION AND RESTORATION AUTHORITY 150 TERRACE STREET BATON ROUGE, LOUISIANA 70802	LaBRANCHE SHORELINE PROTECTION	TYPICAL SECTIONS
DRAWN BY: GE	DESIGNED BY: GS	APPROVED BY: CW	STATE PROJECT NUMBER: PO-0194 FEDERAL PROJECT NUMBER: N/A	DATE: 2022-03-14 SHEET 13 OF 15

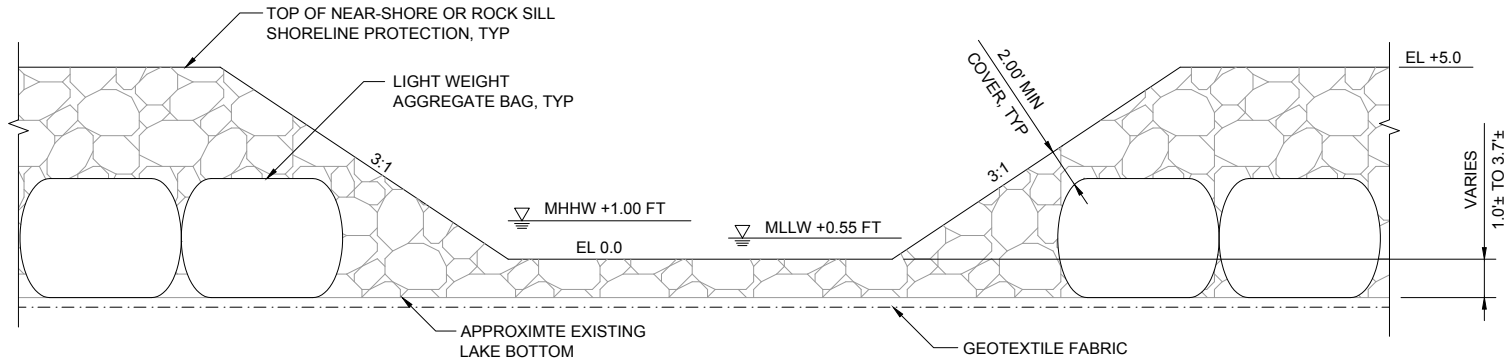


NOTE:
 FISH DIPS ARE LOCATED AT 1,000 FEET MINIMUM ON CENTER OR AS SHOWN ON PLANS, FOR APPROXIMATE LOCATIONS OF FISH DIPS, SEE PLANS ON SHEETS 2 THRU 13. FISH DIP LOCATIONS MAY BE ADJUSTED TO ACCOUNT FOR LIGHT WEIGHT AGGREGATE BAG PLACEMENT.

FISH DIP - PLAN
 SCALE: 1"=20'



FISH DIP - SECTION
 VERTICAL: 1"=5'
 HORIZONTAL: 1"=10'



FISH DIP - ELEVATION
 VERTICAL: 1"=5'
 HORIZONTAL: 1"=10'

APPLICATION BY:
 MOFFATT & NICHOL



COASTAL PROTECTION
 AND RESTORATION
 AUTHORITY
 150 TERRACE STREET
 BATON ROUGE, LOUISIANA 70802

LaBRANCHE
 SHORELINE PROTECTION

DETAILS - 1 OF 2

STATE PROJECT NUMBER: PO-0194

DATE: 2022-03-14

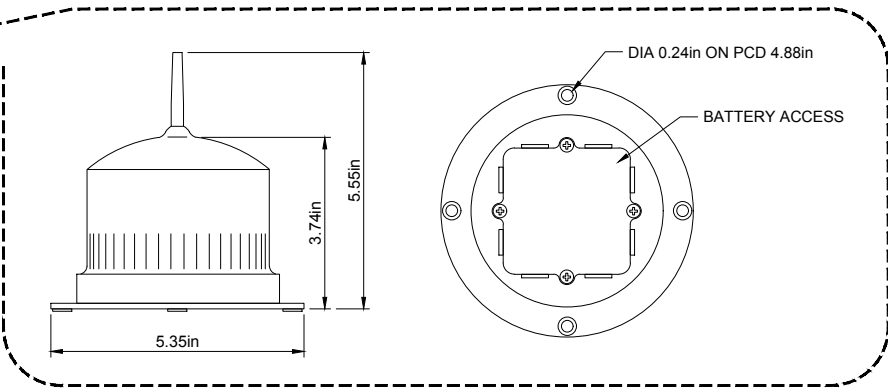
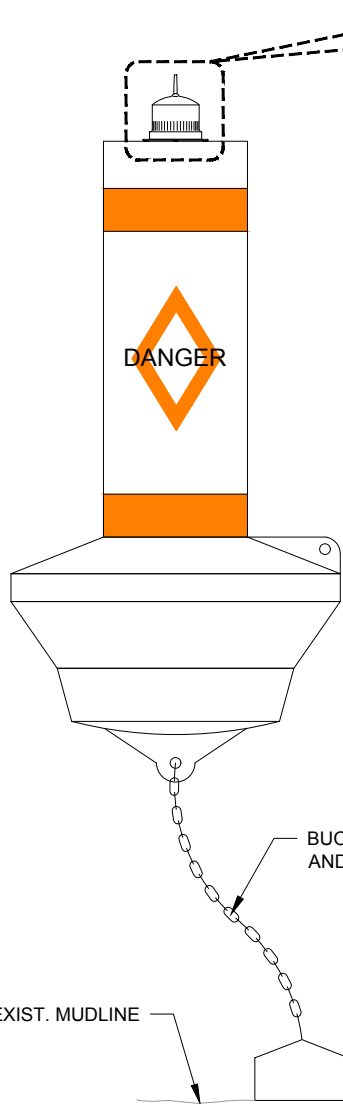
DRAWN BY: GE

DESIGNED BY: GS

APPROVED BY: CW

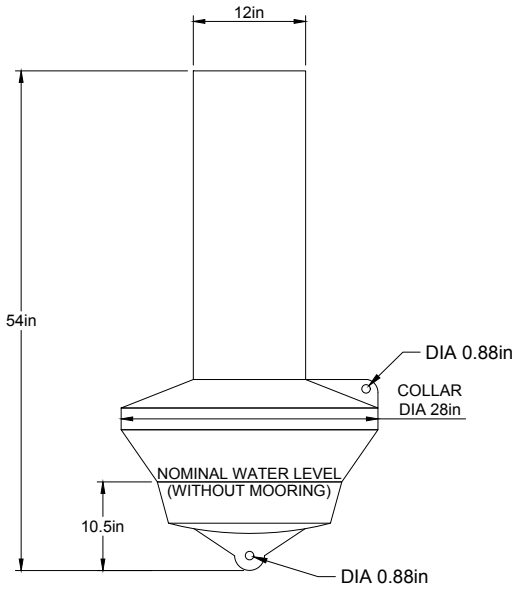
FEDERAL PROJECT NUMBER: N/A

SHEET 14 OF 15

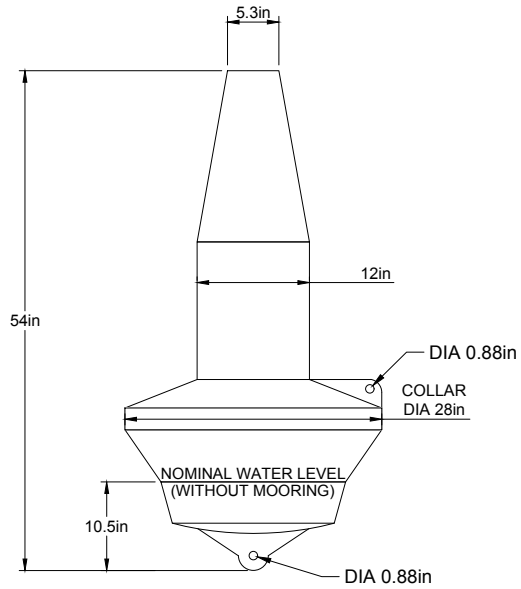


NOTE:
 USCG APPROVED WHITE - MARINE LANTERN FLASH CHARACTERISTIC: FL2.5s (0.3
 SEC ON/2.2 SEC OFF) = 24 FLASHES PER MINUTE.

SL-B700 CAN AND REGULATORY BUOY DIMENSIONS



SL-B700 NUN BUOY DIMENSIONS



APPLICATION BY: MOFFATT & NICHOL	 301 MAIN STREET, SUITE 800, BATON ROUGE, LA 70801	COASTAL PROTECTION AND RESTORATION AUTHORITY 150 TERRACE STREET BATON ROUGE, LOUISIANA 70802	LaBRANCHE SHORELINE PROTECTION	DETAILS - 2 OF 2
DRAWN BY: GE	DESIGNED BY: GS	APPROVED BY: CW	STATE PROJECT NUMBER: PO-0194 FEDERAL PROJECT NUMBER: N/A	DATE: 2022-03-14 SHEET 15 OF 15