

# PUBLIC NOTICE

August 23, 2021

United States Army  
Corps of Engineers  
New Orleans District  
ATTN: Regulatory Division, CEMVN-REG-W  
7400 Leake Ave.  
New Orleans, Louisiana 70118-3651

Project Manager:  
Michael H Herrmann Jr.  
(504) 862-1954  
michael.h.herrmann@usace.army.mil  
Application #: MVN-2021-00491-WLL

Interested parties are hereby notified that a permit application has been received by the New Orleans District of the U.S. Army Corps of Engineers pursuant to: [ ] Section 10 of the Rivers and Harbors Act of March 3, 1899 (30 Stat. 1151; 33 USC 403); and/or [ X ] Section 404 of the Clean Water Act (86 Stat. 816; 33 USC 1344).

## **MAINTENANCE DREDGING IN ST MARTIN PARISH**

**NAME OF APPLICANT:** St. Marin Parish Government, 301 West Port Street, St. Martinville, LA 70582.

**LOCATION OF WORK:** Located off LA Highway 182 in Sections 66,67,68,36,72,39 in the community of Cade, LA at (30 05 28.39, -91 54 30.92) in the Vermilion Teche Watershed, within St. Martin Parish, Louisiana, as shown in the attached drawings.

**CHARACTER OF WORK:** Proposed maintenance dredging of approximately 500,000 cubic yards of excavated material to clear obstructions and dredge silted areas, for the purpose of stormwater drainage improvements. Approximately 69 acres of wetlands will be permanently impacted by the spoil placement within the existing 50-foot and 80-foot easement with a proposed spoil height of approximately 2-feet.

If a Department of the Army permit is warranted, the applicant has proposed to mitigate unavoidable wetlands impacts at an approved and acceptable mitigation bank within the N.O. District.

The comment period on the requested Department of the Army Permit will close **20 days** from the date of this public notice. Written comments, including suggestions for modifications or objections to the proposed work, stating reasons thereof, are being solicited from anyone having interest in this permit request, and must be submitted so as to be received before or by the last day of the comment period. Letters and/or comments concerning the subject permit application must reference the Applicant's Name and the Permit Application Number: **MVN-2021-00491-WLL** and can be emailed to the Corps of Engineers project manager listed above or forwarded to the Corps of Engineers at the address above, **ATTENTION: REGULATORY DIVISION, REG-W, "Michael H. Herrmann Jr."**. Individuals or parties may also request an extension of time in which to comment on the proposed work by mail or by emailing the specified project manager listed above. Any request for an extension of time to comment must be specific and substantively supportive of the requested extension and received by this office prior to the end of the initial comment period. The Section Chief will review the request and the requestor will be promptly notified of the decision to grant or deny the request. If granted, the time extension will be continuous and inclusive of the initial comment period and will not exceed a total of 30 calendar days.

### **Corps of Engineers Permit Criteria**

The decision whether to issue a permit will be based on an evaluation of the probable impacts, including cumulative impacts of the proposed activity on the public interest. That decision will reflect the national concern for both protection and utilization of important resources. The benefit which reasonably may be expected to accrue from the proposal must be balanced against its reasonably foreseeable detriments. All factors which may be relevant to the proposal will be considered including the cumulative effects thereof; among those are conservation, economics, aesthetics, general environmental concerns, wetlands, historic properties, fish and wildlife values, flood hazards, floodplain values, land use, navigation, shoreline erosion and accretion, recreation, water supply and conservation, water quality, energy needs, safety, food and fiber production, mineral needs, considerations of property ownership and, in general, the needs and welfare of the people.

The U.S. Army Corps of Engineers is soliciting comments from the public, federal, state, and local agencies and officials, Indian Tribes, and other interested parties in order to consider and evaluate the impacts of this proposed activity. Any comments received will be considered by the U.S. Army Corps of Engineers to determine whether to make, modify, condition, or deny a permit for this proposal. To make this decision, comments are used to assess impacts on endangered species, historic properties, water quality, general environmental effects, and other public interest factors listed above. Comments are used in the preparation of an Environmental Assessment and/or an Environmental Impact Statement pursuant to the National Environmental Policy Act. Comments are also used to determine the need for a public hearing and to determine the overall public interest of the proposed activity.

The New Orleans District is unaware of properties listed on the National Register of Historic Places near the proposed work. The possibility exists that the proposed work may damage or destroy presently unknown archeological, scientific, prehistorical, historical sites, or data. As necessary, copies of this public notice will be sent to the State Archeologist, State Historic Preservation Officer and federally listed tribes regarding potential impacts to cultural resources.

Our initial finding is that the proposed work would neither affect any species listed as endangered by the U.S. Departments of Interior or Commerce, nor affect any habitat designated as critical to the survival and recovery of any endangered species. Based on the **Information & Planning Consultation for Endangered Species in Louisiana (IPaC)**, as signed on January 27, 2020, between the U.S. Army Corps of Engineers, New Orleans and the U.S. Fish and Wildlife Service, the proposed project was evaluated under the determination key on August 25, 2020 and it has been determined that the proposed project is “Not likely to adversely Affect” the West Indian Manatee (*Trichechus manatus*).

This notice initiates the Essential Fish Habitat (EFH) consultation requirements of the Magnuson-Stevens Fishery Conservation and Management Act. The applicant's proposal may result in the destruction, alteration, and/or disturbance of **0.0 of an acre** of EFH utilized by various life stages of red drum and penaeid shrimp. Our initial determination is that the proposed action would not have a substantial adverse impact on EFH or federally managed fisheries in the Gulf of Mexico. Our final determination relative to project impacts and the need for mitigation measures is subject to review by and coordination with the National Marine Fisheries Service.

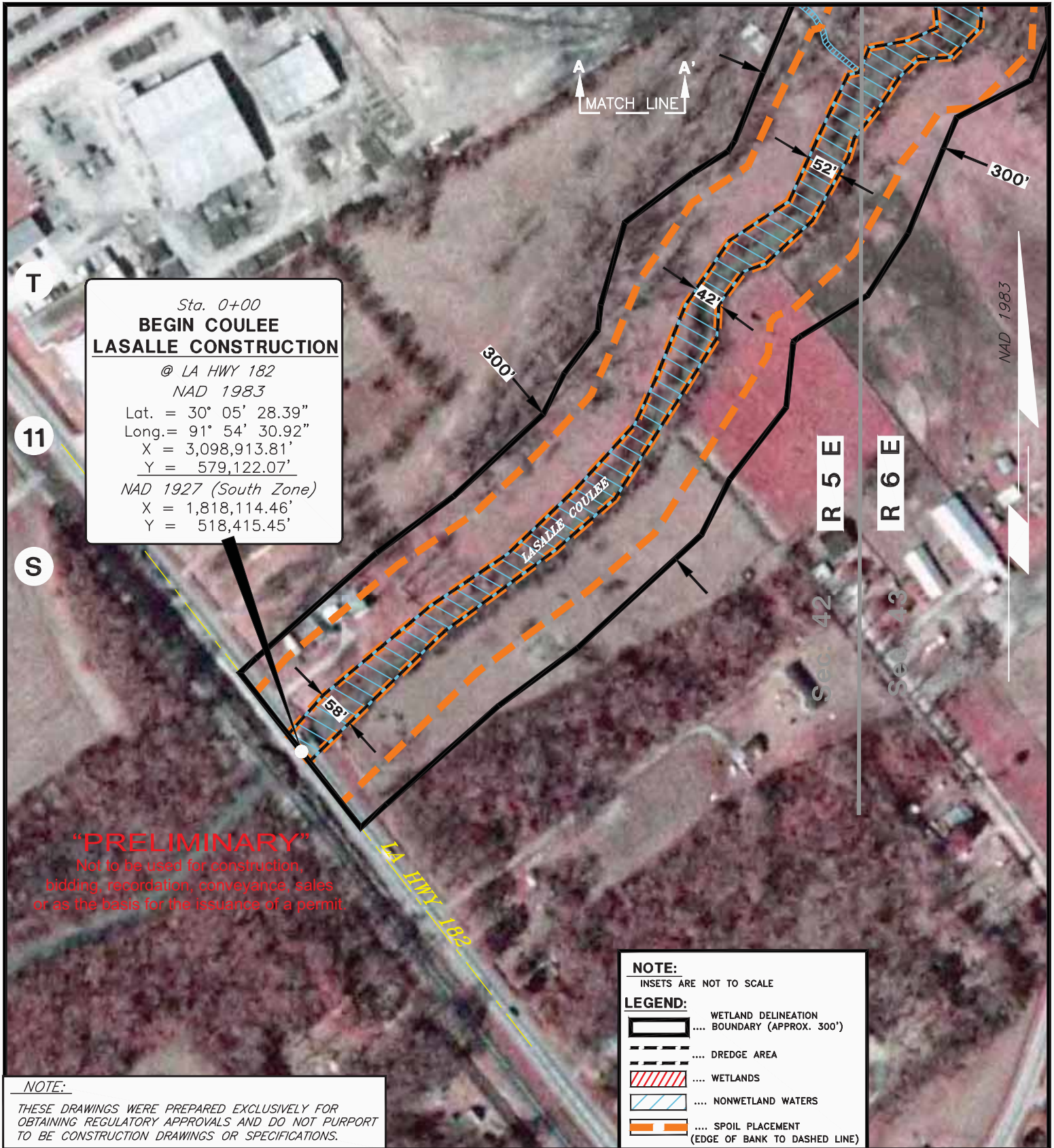
If the proposed work involves deposits of dredged or fill material into navigable waters, the evaluation of the probable impacts will include the application of guidelines established by the Administrator of the Environmental Protection Agency. Also, a certification that the proposed activity will not violate applicable water quality standards will be required from the LA Department of Environmental Quality before a Department of the Army permit is issued.

Any person may request, in writing, within the comment period specified in this notice, that a public hearing be held to consider this application. Requests for public hearings shall state, with particularity, the reasons for holding a public hearing.

You are invited to communicate the information contained in this notice to any other parties whom you deem likely to have interest in the matter.

Darrell S. Barbara  
Chief, Western Evaluation Branch  
Regulatory Division

Enclosures



Sta. 0+00  
**BEGIN COULEE**  
**LASALLE CONSTRUCTION**  
 @ LA HWY 182  
 NAD 1983  
 Lat. = 30° 05' 28.39"  
 Long. = 91° 54' 30.92"  
 X = 3,098,913.81'  
 Y = 579,122.07'  
 NAD 1927 (South Zone)  
 X = 1,818,114.46'  
 Y = 518,415.45'

**“PRELIMINARY”**  
 Not to be used for construction,  
 bidding, recordation, conveyance, sales  
 or as the basis for the issuance of a permit.

**NOTE:**  
 INSETS ARE NOT TO SCALE

**LEGEND:**

- WETLAND DELINEATION BOUNDARY (APPROX. 300')
- DREDGE AREA
- WETLANDS
- NONWETLAND WATERS
- SPOIL PLACEMENT (EDGE OF BANK TO DASHED LINE)

**NOTE:**  
 THESE DRAWINGS WERE PREPARED EXCLUSIVELY FOR OBTAINING REGULATORY APPROVALS AND DO NOT PURPORT TO BE CONSTRUCTION DRAWINGS OR SPECIFICATIONS.

**LOCATION MAP**

REPRODUCED FROM 2004 "YOUNGVILLE NE" LA AERIAL PHOTO

200' 0' 200'

SCALE 1" = 200'

PREPARED BY:  
 C. L. JACK STELLY & ASSOCIATES, INC.  
 143 WALL STREET, LAFAYETTE, LA 70506  
 PH. (337) 237-0746  
 FILE NO. 20254-C3-R2.DWG

**PROPOSED MAINTENANCE PROJECT**

CYPRESS BAYOU / COULEE LASALLE

ST. MARTIN PARISH, LOUISIANA

APPLICATION BY: ST. MARTIN PARISH GOVERNMENT  
 APRIL 22, 2021 LAFAYETTE, LOUISIANA

REVISIONS:

SHEET 1 OF 26

R 5 E  
R 6 E

B  
MATCH LINE  
B'

**"PRELIMINARY"**  
Not to be used for construction,  
bidding, recordation, conveyance, sales  
or as the basis for the issuance of a permit.

T

11

S

Sec. 42  
Sec. 43

LASALLE COULEE

65'

300'

76'

NAD 1983

A  
MATCH LINE  
A'

**NOTE:**  
THESE DRAWINGS WERE PREPARED EXCLUSIVELY FOR  
OBTAINING REGULATORY APPROVALS AND DO NOT PURPORT  
TO BE CONSTRUCTION DRAWINGS OR SPECIFICATIONS.

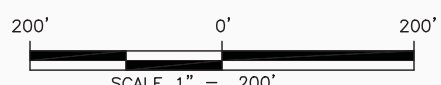
**NOTE:**  
INSETS ARE NOT TO SCALE

**LEGEND:**

- WETLAND DELINEATION
- BOUNDARY (APPROX. 300')
- DREDGE AREA
- WETLANDS
- NONWETLAND WATERS
- SPOIL PLACEMENT (EDGE OF BANK TO DASHED LINE)

### LOCATION MAP

REPRODUCED FROM 2004 "YOUNGSVILLE NE" LA AERIAL PHOTO



### PROPOSED MAINTENANCE PROJECT

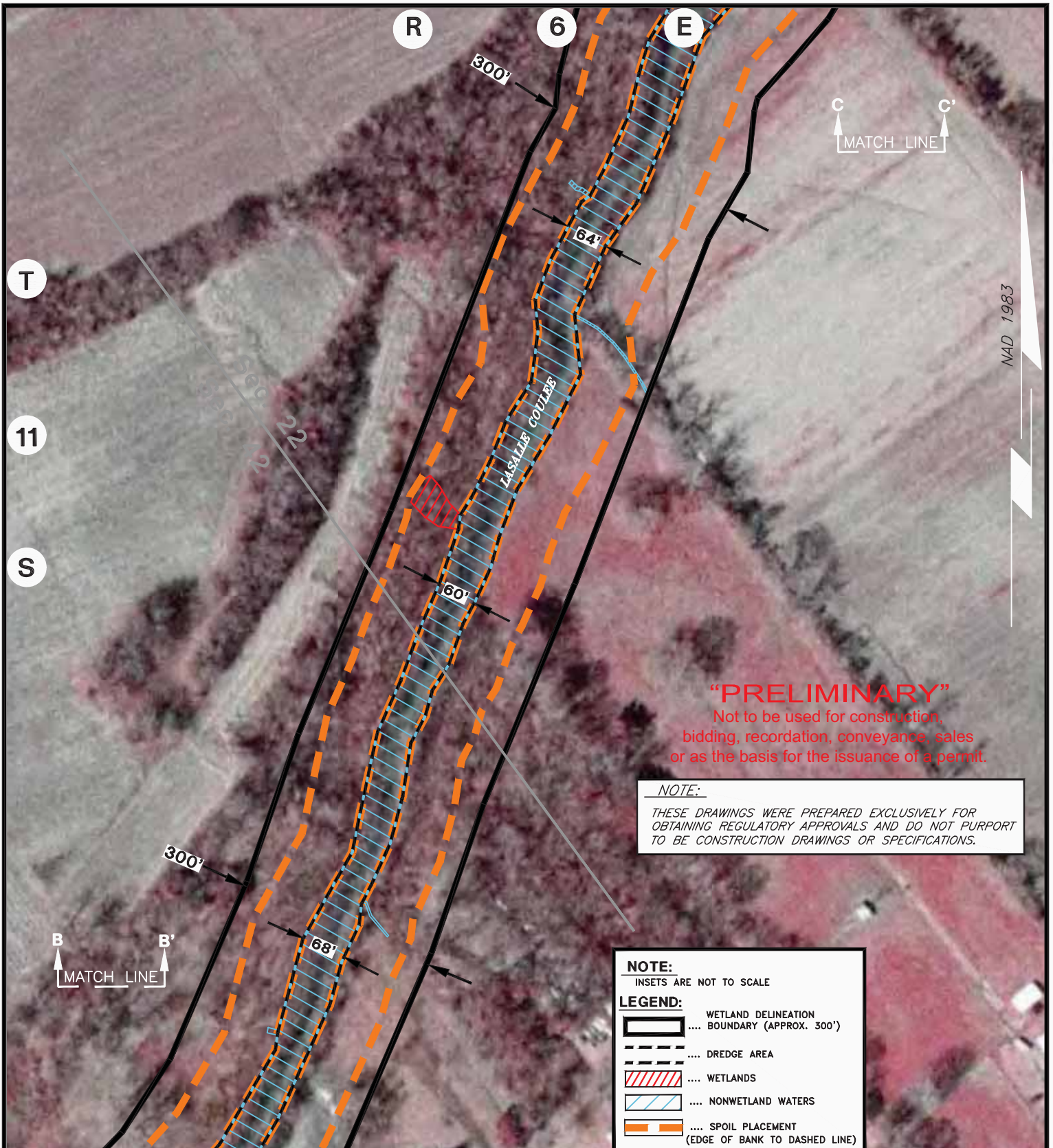
CYPRESS BAYOU / COULEE LASALLE

ST. MARTIN PARISH, LOUISIANA

APPLICATION BY:  
APRIL 22, 2021

ST. MARTIN PARISH GOVERNMENT  
LAFAYETTE, LOUISIANA

REVISIONS:



NAD 1983

**“PRELIMINARY”**  
 Not to be used for construction,  
 bidding, recordation, conveyance, sales  
 or as the basis for the issuance of a permit.

**NOTE:**  
 THESE DRAWINGS WERE PREPARED EXCLUSIVELY FOR  
 OBTAINING REGULATORY APPROVALS AND DO NOT PURPORT  
 TO BE CONSTRUCTION DRAWINGS OR SPECIFICATIONS.

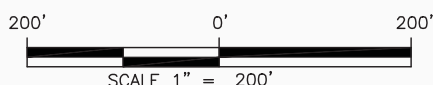
**NOTE:**  
 INSETS ARE NOT TO SCALE

**LEGEND:**

- WETLAND DELINEATION BOUNDARY (APPROX. 300')
- DREDGE AREA
- WETLANDS
- NONWETLAND WATERS
- SPOIL PLACEMENT (EDGE OF BANK TO DASHED LINE)

**LOCATION MAP**

REPRODUCED FROM 2004 "YOUNGVILLE NE" LA  
 AERIAL PHOTO



PREPARED BY:  
 C. L. JACK STELLY & ASSOCIATES, INC.  
 143 WALL STREET, LAFAYETTE, LA 70506  
 PH. (337) 237-0746  
 FILE NO. 20254-C3-R2.DWG

**PROPOSED MAINTENANCE PROJECT**

CYPRESS BAYOU / COULEE LASALLE

ST. MARTIN PARISH, LOUISIANA

APPLICATION BY:  
 APRIL 22, 2021

ST. MARTIN PARISH GOVERNMENT  
 LAFAYETTE, LOUISIANA

REVISIONS:

R 6 E

D D'  
MATCH LINE

Sec. 22

**“PRELIMINARY”**

Not to be used for construction,  
bidding, recordation, conveyance, sales  
or as the basis for the issuance of a permit.

T

11

S

300'

47'

POND

56'

74'

300'

C C'  
MATCH LINE

NAD 1983






**NOTE:**

THESE DRAWINGS WERE PREPARED EXCLUSIVELY FOR  
OBTAINING REGULATORY APPROVALS AND DO NOT PURPORT  
TO BE CONSTRUCTION DRAWINGS OR SPECIFICATIONS.

**NOTE:**

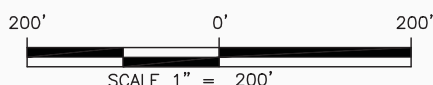
INSETS ARE NOT TO SCALE

**LEGEND:**

-  WETLAND DELINEATION BOUNDARY (APPROX. 300')
-  DREDGE AREA
-  WETLANDS
-  NONWETLAND WATERS
-  SPOIL PLACEMENT (EDGE OF BANK TO DASHED LINE)

### LOCATION MAP

REPRODUCED FROM 2004 "YOUNGVILLE NE" LA



PREPARED BY:  
C. L. JACK STELLY & ASSOCIATES, INC.  
143 WALL STREET, LAFAYETTE, LA 70506  
PH. (337) 237-0746  
FILE NO. 20254-C3-R2.DWG

### PROPOSED MAINTENANCE PROJECT

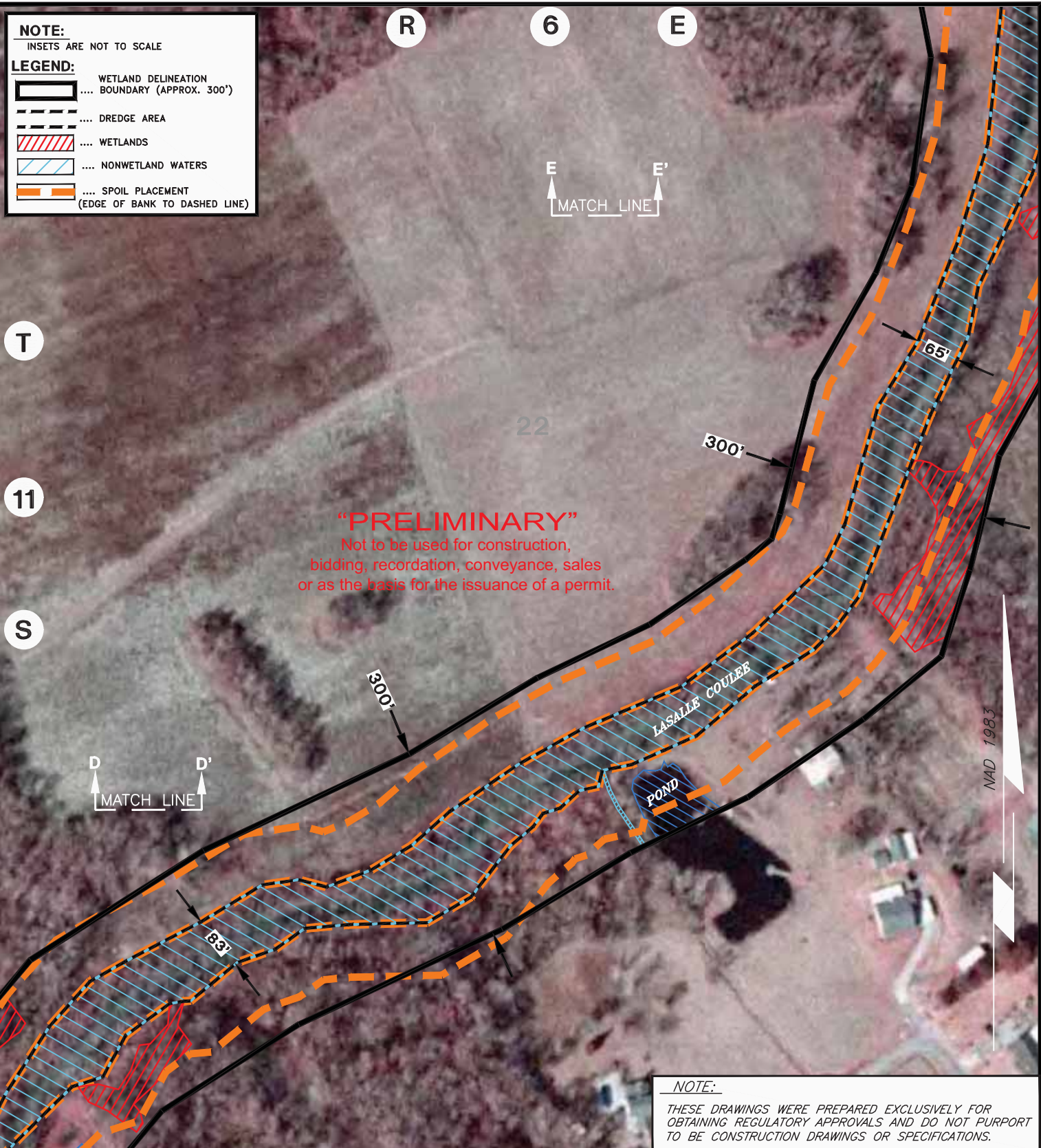
CYPRESS BAYOU / COULEE LASALLE

ST. MARTIN PARISH, LOUISIANA

APPLICATION BY:  
APRIL 22, 2021

ST. MARTIN PARISH GOVERNMENT  
LAFAYETTE, LOUISIANA

REVISIONS:



**NOTE:**  
INSETS ARE NOT TO SCALE

**LEGEND:**

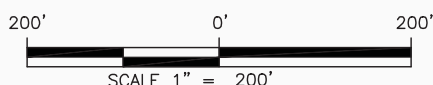
- WETLAND DELINEATION BOUNDARY (APPROX. 300')
- DREDGE AREA
- WETLANDS
- NONWETLAND WATERS
- SPOIL PLACEMENT (EDGE OF BANK TO DASHED LINE)

**"PRELIMINARY"**  
Not to be used for construction, bidding, recordation, conveyance, sales or as the basis for the issuance of a permit.

**NOTE:**  
THESE DRAWINGS WERE PREPARED EXCLUSIVELY FOR OBTAINING REGULATORY APPROVALS AND DO NOT PURPORT TO BE CONSTRUCTION DRAWINGS OR SPECIFICATIONS.

**LOCATION MAP**

REPRODUCED FROM 2004 "YOUNGVILLE NE" LA AERIAL PHOTO



PREPARED BY:  
C. L. JACK STELLY & ASSOCIATES, INC.  
143 WALL STREET, LAFAYETTE, LA 70506  
PH. (337) 237-0746  
FILE NO. 20254-C3-R2.DWG

**PROPOSED MAINTENANCE PROJECT**

CYPRESS BAYOU / COULEE LASALLE

ST. MARTIN PARISH, LOUISIANA

APPLICATION BY:  
APRIL 22, 2021

ST. MARTIN PARISH GOVERNMENT  
LAFAYETTE, LOUISIANA

REVISIONS:








R 6 E

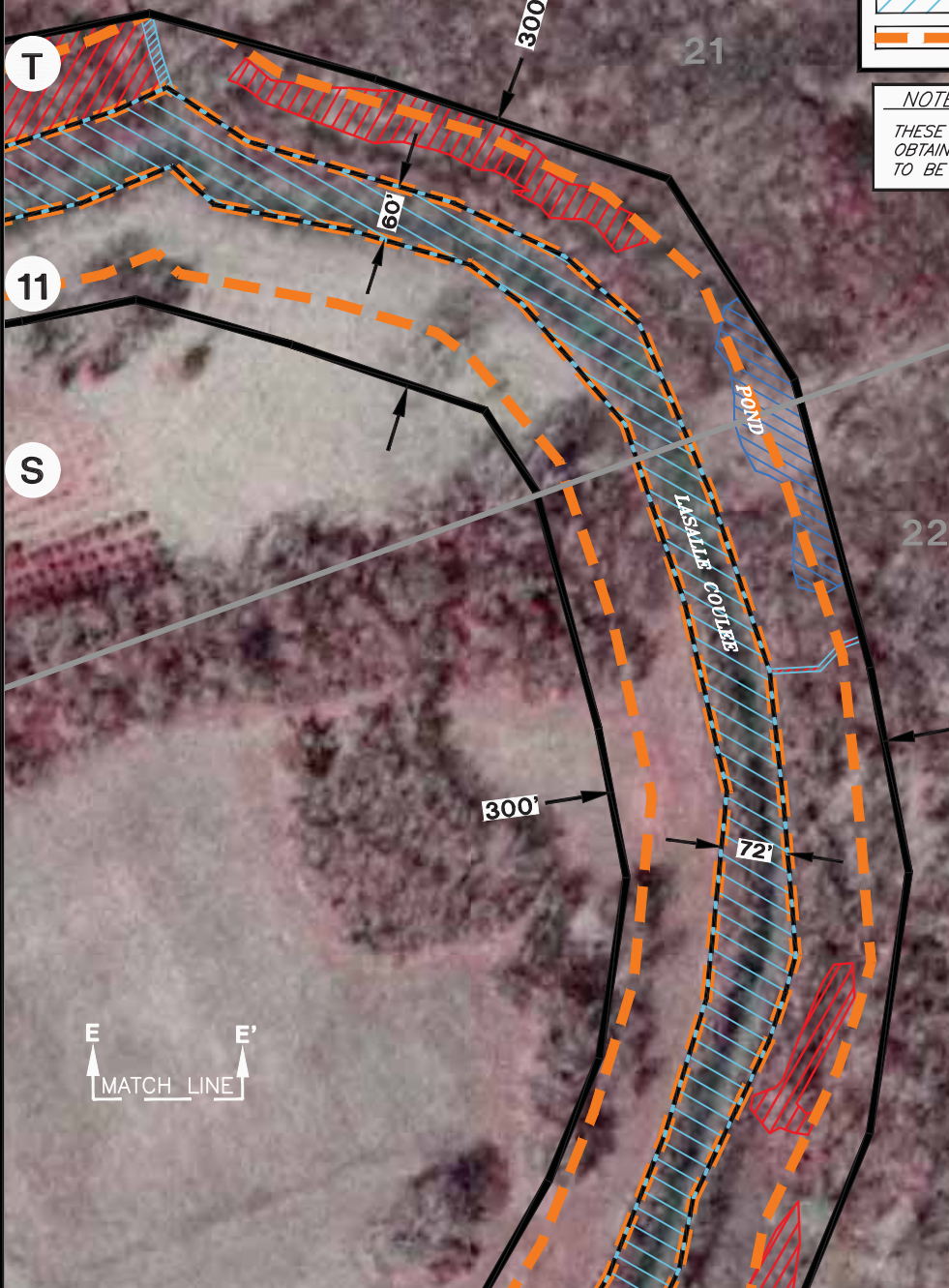
F F'  
MATCH LINE

**NOTE:**  
INSETS ARE NOT TO SCALE

**LEGEND:**

-  WETLAND DELINEATION BOUNDARY (APPROX. 300')
-  DREDGE AREA
-  WETLANDS
-  NONWETLAND WATERS
-  SPOIL PLACEMENT (EDGE OF BANK TO DASHED LINE)

**NOTE:**  
THESE DRAWINGS WERE PREPARED EXCLUSIVELY FOR OBTAINING REGULATORY APPROVALS AND DO NOT PURPORT TO BE CONSTRUCTION DRAWINGS OR SPECIFICATIONS.

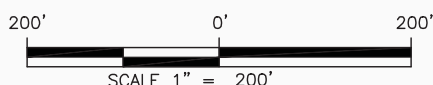


NAD 1983

**“PRELIMINARY”**  
Not to be used for construction, bidding, recordation, conveyance, sales or as the basis for the issuance of a permit.

### LOCATION MAP

REPRODUCED FROM 2004 "YOUNGVILLE NE" LA AERIAL PHOTO



PREPARED BY:  
C. L. JACK STELLY & ASSOCIATES, INC.  
143 WALL STREET, LAFAYETTE, LA 70506  
PH. (337) 237-0746  
FILE NO. 20254-C3-R2.DWG

### PROPOSED MAINTENANCE PROJECT

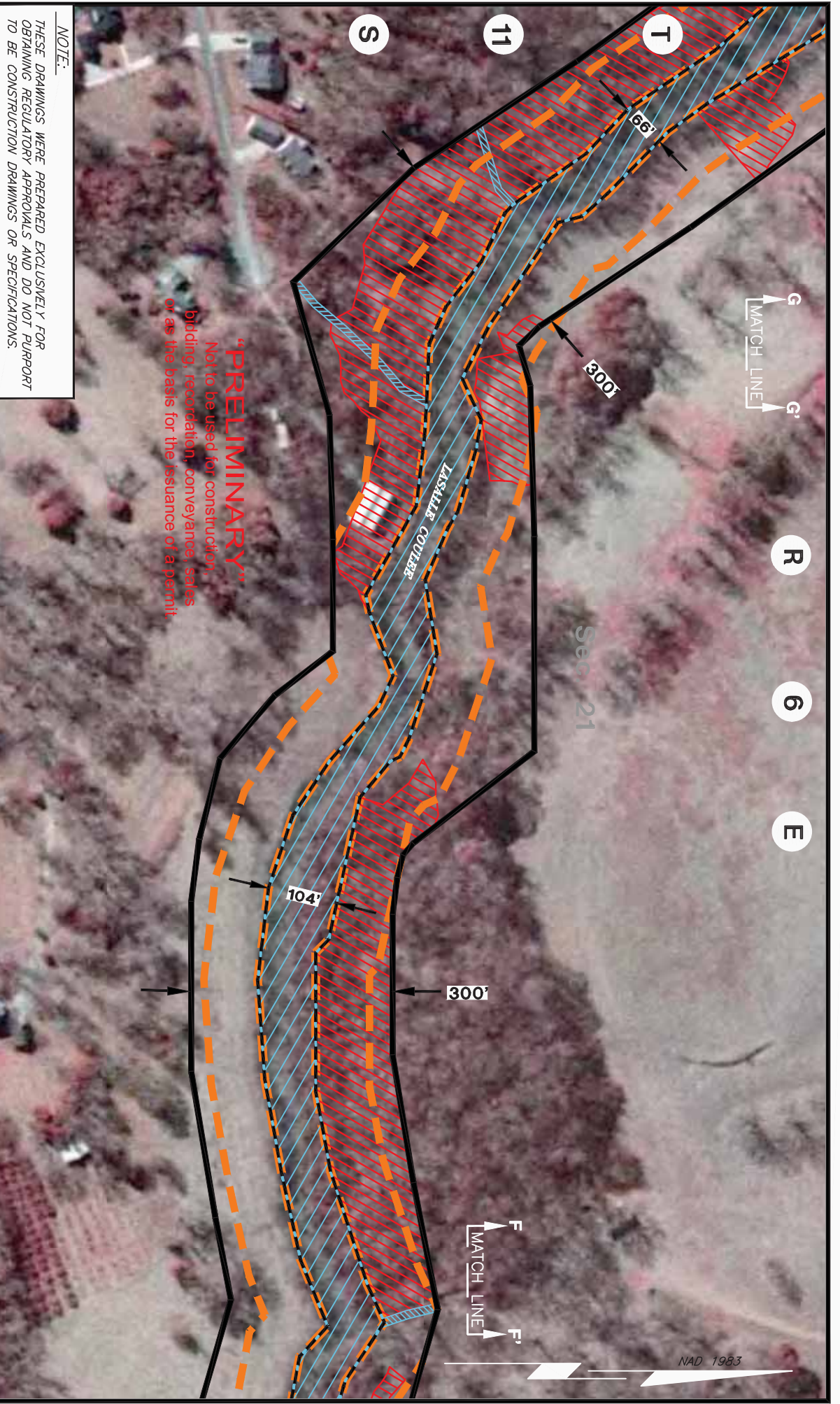
CYPRESS BAYOU / COULEE LASALLE

ST. MARTIN PARISH, LOUISIANA

APPLICATION BY:  
APRIL 22, 2021

ST. MARTIN PARISH GOVERNMENT  
LAFAYETTE, LOUISIANA

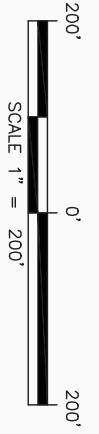
REVISIONS:



**"PRELIMINARY"**  
 Not to be used for construction, bidding, recordation, conveyance, sales or as the basis for the issuance of a permit.

**NOTE:**  
 THESE DRAWINGS WERE PREPARED EXCLUSIVELY FOR OBTAINING REGULATORY APPROVALS AND DO NOT PURPORT TO BE CONSTRUCTION DRAWINGS OR SPECIFICATIONS.

**LOCATION MAP**  
 REPRODUCED FROM 2004 "YOUNGVILLE NE" LA AERIAL PHOTO



PREPARED BY:  
 C. L. JACK STELLY & ASSOCIATES, INC.  
 143 WALL STREET, LAFAYETTE, LA 70506  
 PH: (337) 237-0746  
 FILE NO. 20254-C3-R2.DWG

**PROPOSED MAINTENANCE PROJECT**

CYPRESS BAYOU / COULEE LASALLE

ST. MARTIN PARISH, LOUISIANA

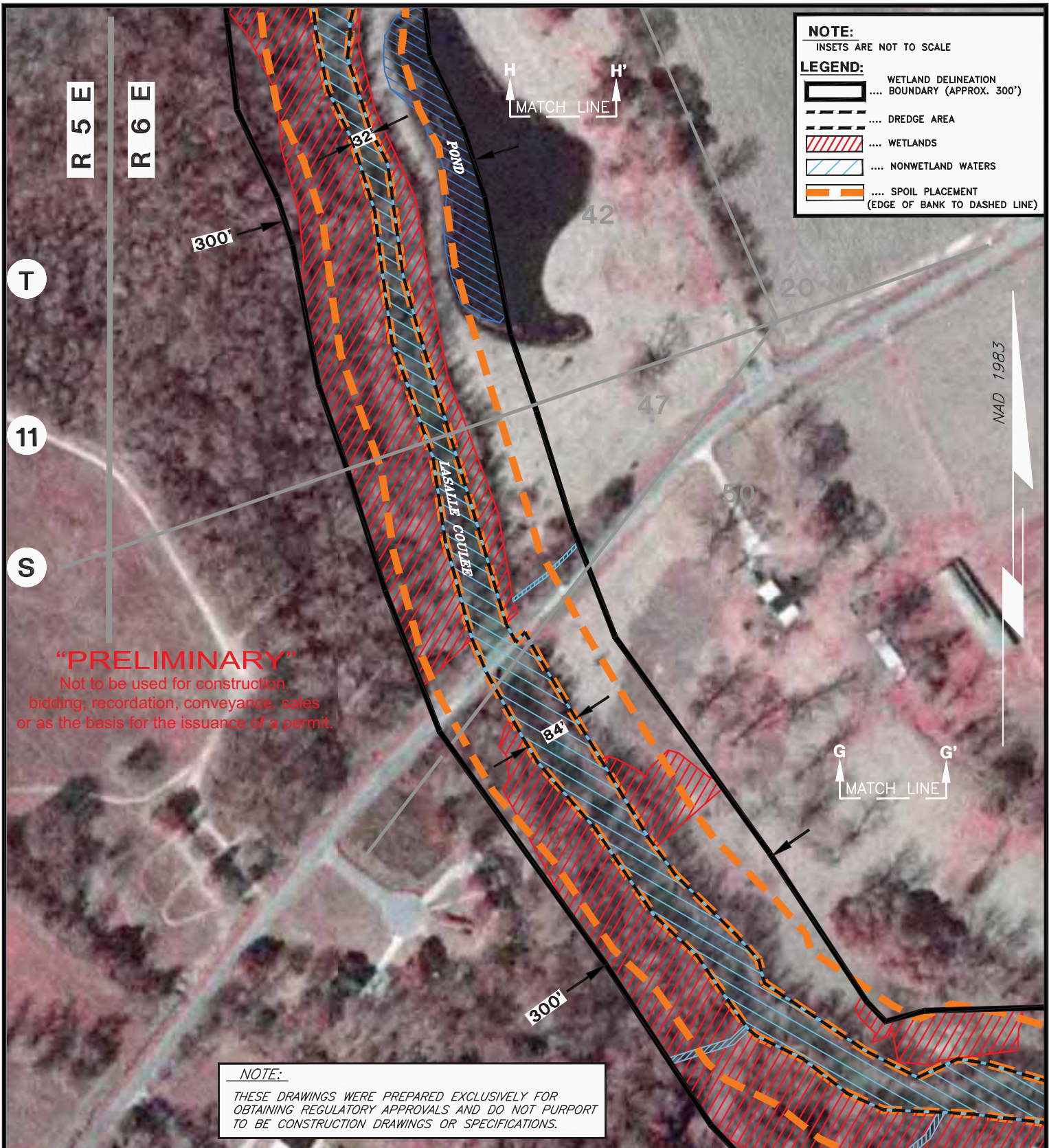
APPLICATION BY:  
 ST. MARTIN PARISH GOVERNMENT  
 APRIL 22, 2021

REVISIONS:  
 SHEET 7 OF 26

**NOTE:**  
 INSERTS ARE NOT TO SCALE

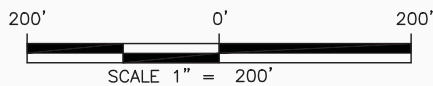
**LEGEND:**

- WETLAND DELINEATION BOUNDARY (APPROX. 300')
- DREDGE AREA
- WETLANDS
- NONWETLAND WATERS
- SPOIL PLACEMENT (EDGE OF BANK TO DASHED LINE)



**LOCATION MAP**

REPRODUCED FROM 2004 "YOUNGVILLE NE" LA AERIAL PHOTO



PREPARED BY:  
C. L. JACK STELLY & ASSOCIATES, INC.  
143 WALL STREET, LAFAYETTE, LA 70506  
PH. (337) 237-0746  
FILE NO. 20254-C3-R2.DWG

**PROPOSED MAINTENANCE PROJECT**

CYPRESS BAYOU / COULEE LASALLE

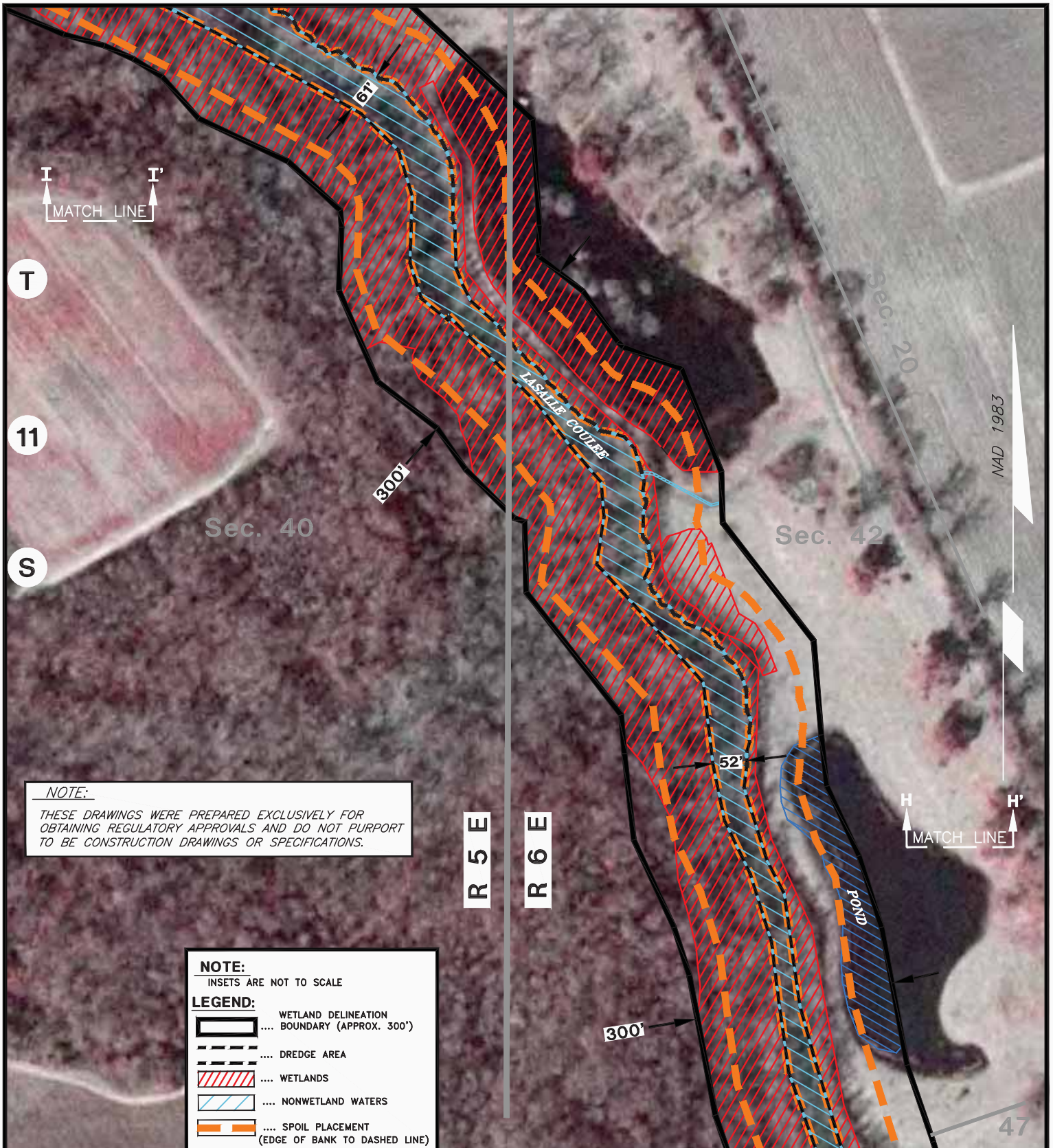
ST. MARTIN PARISH, LOUISIANA

APPLICATION BY:  
APRIL 22, 2021

ST. MARTIN PARISH GOVERNMENT  
LAFAYETTE, LOUISIANA

REVISIONS:

SHEET 8 OF 26



**NOTE:**  
 THESE DRAWINGS WERE PREPARED EXCLUSIVELY FOR OBTAINING REGULATORY APPROVALS AND DO NOT PURPORT TO BE CONSTRUCTION DRAWINGS OR SPECIFICATIONS.

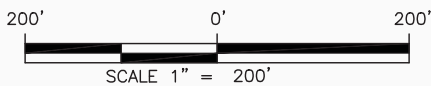
**NOTE:**  
 INSETS ARE NOT TO SCALE

**LEGEND:**

- WETLAND DELINEATION BOUNDARY (APPROX. 300')
- DREDGE AREA
- WETLANDS
- NONWETLAND WATERS
- SPOIL PLACEMENT (EDGE OF BANK TO DASHED LINE)

**LOCATION MAP**

REPRODUCED FROM 2004 "YOUNGVILLE NE" LA AERIAL PHOTO



PREPARED BY:  
 C. L. JACK STELLY & ASSOCIATES, INC.  
 143 WALL STREET, LAFAYETTE, LA 70506  
 PH. (337) 237-0746  
 FILE NO. 20254-C3-R2.DWG

**PROPOSED MAINTENANCE PROJECT**

CYPRESS BAYOU / COULEE LASALLE

ST. MARTIN PARISH, LOUISIANA






APPLICATION BY:  
 APRIL 22, 2021

ST. MARTIN PARISH GOVERNMENT  
 LAFAYETTE, LOUISIANA

REVISIONS:

**NOTE:**  
INSETS ARE NOT TO SCALE

**LEGEND:**

-  WETLAND DELINEATION BOUNDARY (APPROX. 300')
-  DREDGE AREA
-  WETLANDS
-  NONWETLAND WATERS
-  SPOIL PLACEMENT (EDGE OF BANK TO DASHED LINE)

J  
MATCH LINE  
J'

Sec. 39

R 5 E  
R 6 E

20



T

Sec. 40

11

S

Sec. 42

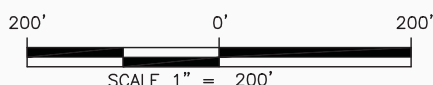
**"PRELIMINARY"**  
Not to be used for construction,  
bidding, recordation, conveyance, sales  
or as the basis for the issuance of a permit.

I  
MATCH LINE  
I'

**NOTE:**  
THESE DRAWINGS WERE PREPARED EXCLUSIVELY FOR  
OBTAINING REGULATORY APPROVALS AND DO NOT PURPORT  
TO BE CONSTRUCTION DRAWINGS OR SPECIFICATIONS.

**LOCATION MAP**

REPRODUCED FROM 2004 "YOUNGVILLE NE" LA  
AERIAL PHOTO



SCALE 1" = 200'

**PROPOSED MAINTENANCE PROJECT**

CYPRESS BAYOU / COULEE LASALLE

ST. MARTIN PARISH, LOUISIANA

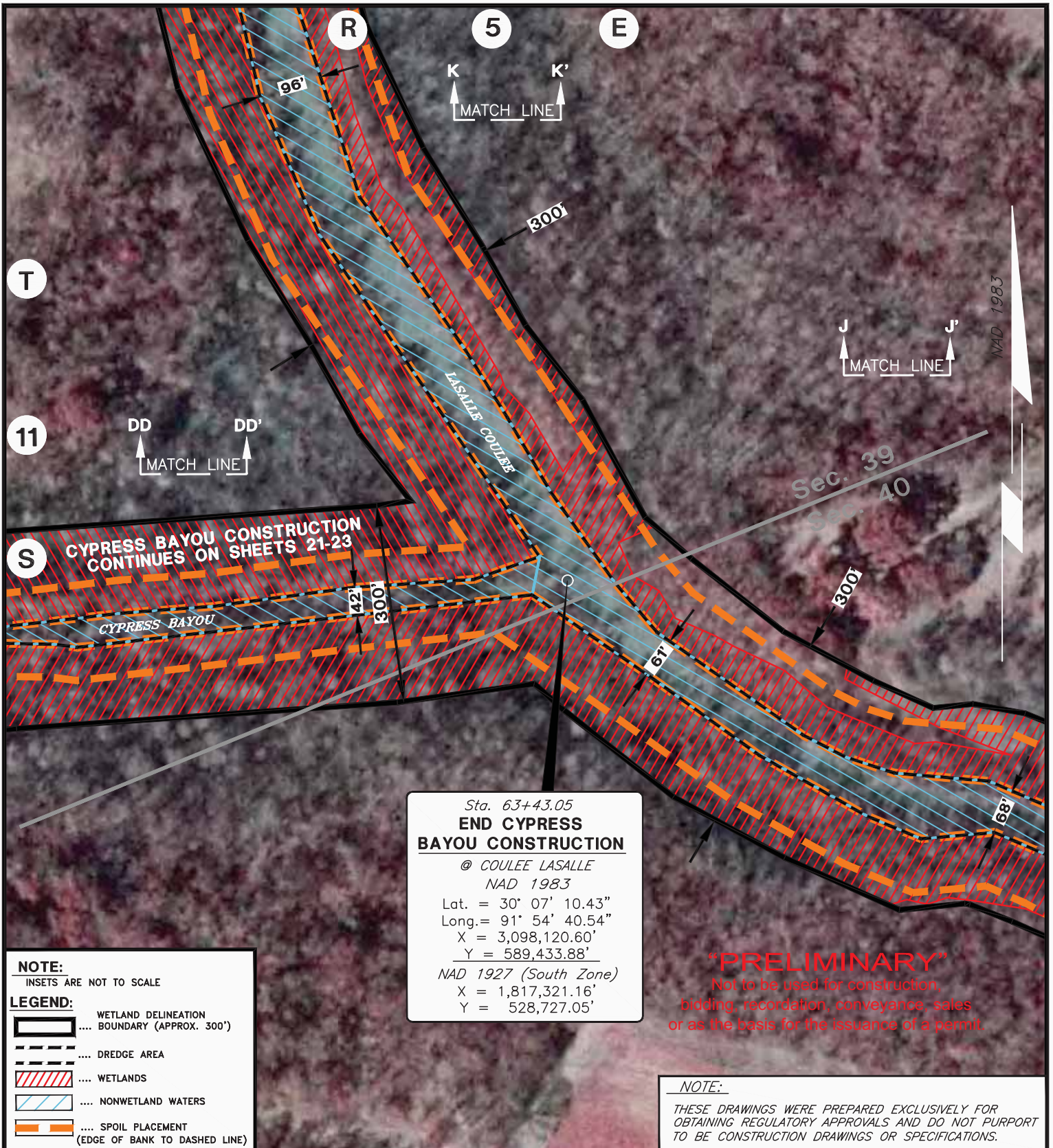
APPLICATION BY:  
APRIL 22, 2021

ST. MARTIN PARISH GOVERNMENT  
LAFAYETTE, LOUISIANA

REVISIONS:

SHEET 10 OF 26

PREPARED BY:  
C. L. JACK STELLY & ASSOCIATES, INC.  
143 WALL STREET, LAFAYETTE, LA 70506  
PH. (337) 237-0746  
FILE NO. 20254-C3-R2.DWG



Sta. 63+43.05  
**END CYPRESS BAYOU CONSTRUCTION**  
 @ COULEE LASALLE  
 NAD 1983  
 Lat. = 30° 07' 10.43"  
 Long. = 91° 54' 40.54"  
 X = 3,098,120.60'  
 Y = 589,433.88'  
 NAD 1927 (South Zone)  
 X = 1,817,321.16'  
 Y = 528,727.05'

**NOTE:**  
 INSETS ARE NOT TO SCALE

**LEGEND:**

- .... WETLAND DELINEATION BOUNDARY (APPROX. 300')
- .... DREDGE AREA
- .... WETLANDS
- .... NONWETLAND WATERS
- .... SPOIL PLACEMENT (EDGE OF BANK TO DASHED LINE)

**"PRELIMINARY"**  
 Not to be used for construction, bidding, recordation, conveyance, sales or as the basis for the issuance of a permit.

**NOTE:**  
 THESE DRAWINGS WERE PREPARED EXCLUSIVELY FOR OBTAINING REGULATORY APPROVALS AND DO NOT PURPORT TO BE CONSTRUCTION DRAWINGS OR SPECIFICATIONS.

**LOCATION MAP**  
 REPRODUCED FROM 2004 "YOUNGVILLE NE" LA AERIAL PHOTO

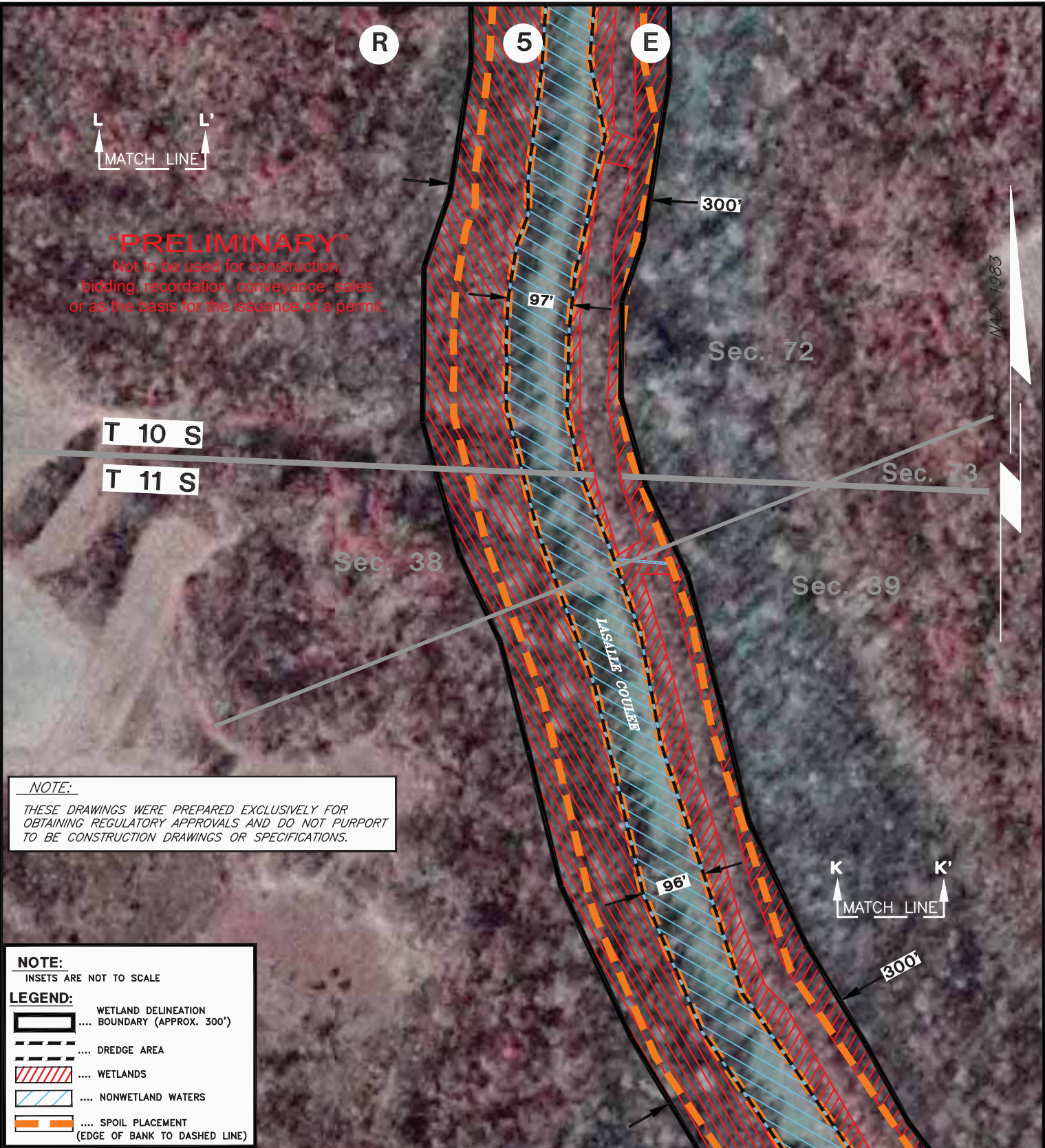
PREPARED BY:  
 C. L. JACK STELLY & ASSOCIATES, INC.  
 143 WALL STREET, LAFAYETTE, LA 70506  
 PH. (337) 237-0746  
 FILE NO. 20254-C3-R2.DWG

**PROPOSED MAINTENANCE PROJECT**  
 CYPRESS BAYOU / COULEE LASALLE  
 ST. MARTIN PARISH, LOUISIANA

APPLICATION BY: ST. MARTIN PARISH GOVERNMENT  
 APRIL 22, 2021 LAFAYETTE, LOUISIANA

REVISIONS:

SHEET 11 OF 26



**"PRELIMINARY"**  
 Not to be used for construction,  
 bidding, recordation, conveyance, sales  
 or as the basis for the issuance of a permit.

**NOTE:**  
 THESE DRAWINGS WERE PREPARED EXCLUSIVELY FOR  
 OBTAINING REGULATORY APPROVALS AND DO NOT PURPORT  
 TO BE CONSTRUCTION DRAWINGS OR SPECIFICATIONS.

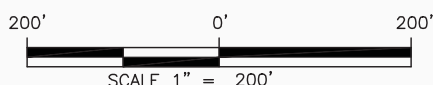
**NOTE:**  
 INSETS ARE NOT TO SCALE

**LEGEND:**

- .... WETLAND DELINEATION BOUNDARY (APPROX. 300')
- .... DREDGE AREA
- .... WETLANDS
- .... NONWETLAND WATERS
- .... SPOIL PLACEMENT (EDGE OF BANK TO DASHED LINE)

**LOCATION MAP**

REPRODUCED FROM 2004 "YOUNGVILLE NE" LA  
 AERIAL PHOTO



**PROPOSED MAINTENANCE PROJECT**

CYPRESS BAYOU / COULEE LASALLE

ST. MARTIN PARISH, LOUISIANA

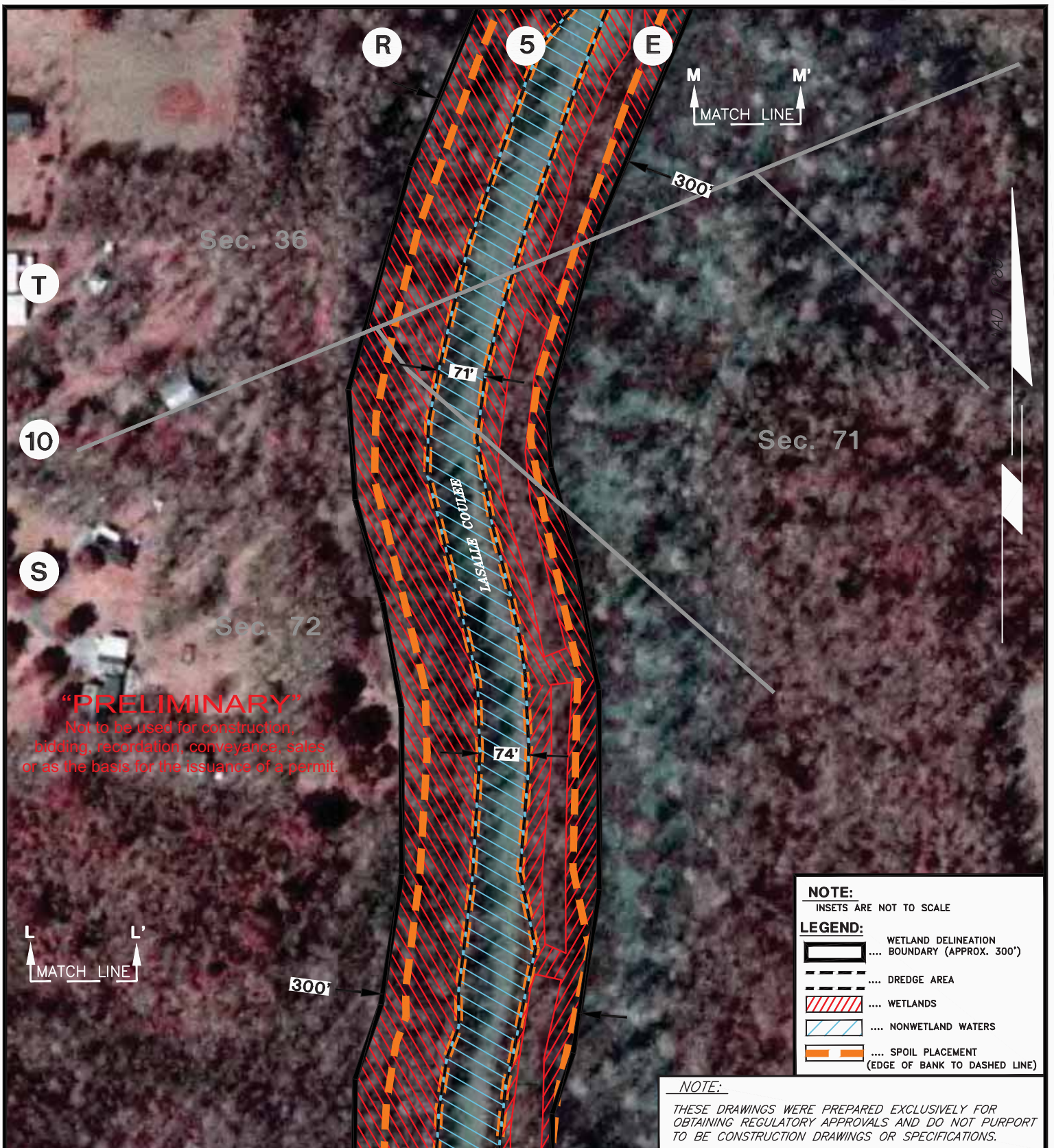
APPLICATION BY:  
 APRIL 22, 2021

ST. MARTIN PARISH GOVERNMENT  
 LAFAYETTE, LOUISIANA

REVISIONS:

SHEET 12 OF 26

PREPARED BY:  
 C. L. JACK STELLY & ASSOCIATES, INC.  
 143 WALL STREET, LAFAYETTE, LA 70506  
 PH. (337) 237-0746  
 FILE NO. 20254-C3-R2.DWG



**“PRELIMINARY”**  
 Not to be used for construction,  
 bidding, recordation, conveyance, sales  
 or as the basis for the issuance of a permit.

**NOTE:**  
 INSETS ARE NOT TO SCALE

**LEGEND:**

- WETLAND DELINEATION BOUNDARY (APPROX. 300')
- DREDGE AREA
- WETLANDS
- NONWETLAND WATERS
- SPOIL PLACEMENT (EDGE OF BANK TO DASHED LINE)

**NOTE:**  
 THESE DRAWINGS WERE PREPARED EXCLUSIVELY FOR  
 OBTAINING REGULATORY APPROVALS AND DO NOT PURPORT  
 TO BE CONSTRUCTION DRAWINGS OR SPECIFICATIONS.

**LOCATION MAP**  
 REPRODUCED FROM 2004 "BROSSARD SE" LA  
 AERIAL PHOTO

200' 0' 200'  
 SCALE 1" = 200'

PREPARED BY:  
 C. L. JACK STELLY & ASSOCIATES, INC.  
 143 WALL STREET, LAFAYETTE, LA 70506  
 PH. (337) 237-0746  
 FILE NO. 20254-C3-R2.DWG

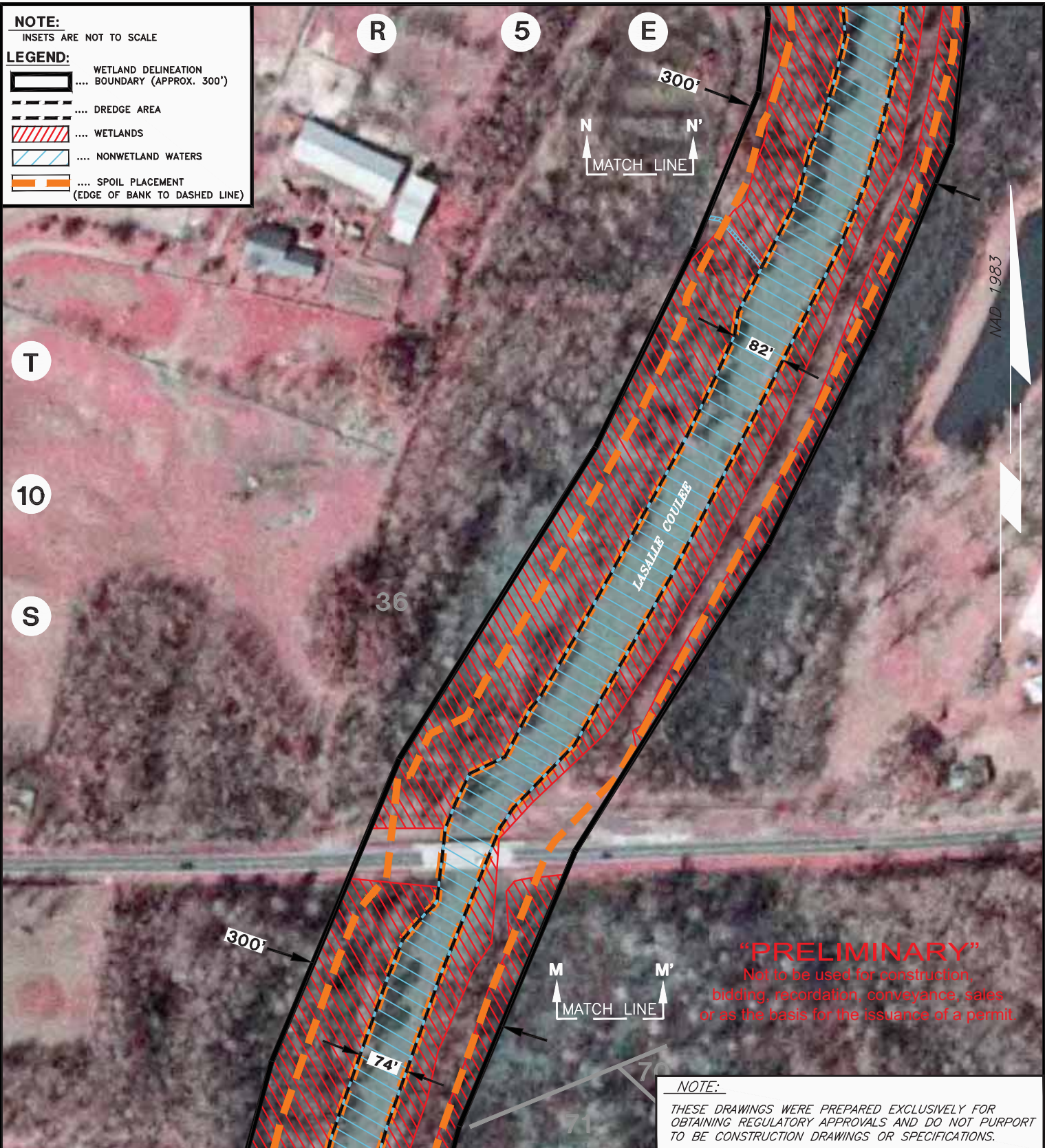
**PROPOSED MAINTENANCE PROJECT**  
 CYPRESS BAYOU / COULEE LASALLE  
 ST. MARTIN PARISH, LOUISIANA

APPLICATION BY: ST. MARTIN PARISH GOVERNMENT  
 APRIL 22, 2021 LAFAYETTE, LOUISIANA

REVISIONS:

SHEET 13 OF 26





**NOTE:**  
 INSETS ARE NOT TO SCALE

**LEGEND:**

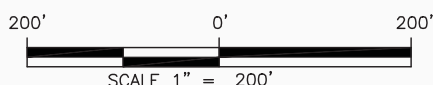
- WETLAND DELINEATION BOUNDARY (APPROX. 300')
- DREDGE AREA
- WETLANDS
- NONWETLAND WATERS
- SPOIL PLACEMENT (EDGE OF BANK TO DASHED LINE)

**"PRELIMINARY"**  
 Not to be used for construction, bidding, recordation, conveyance, sales or as the basis for the issuance of a permit.

**NOTE:**  
 THESE DRAWINGS WERE PREPARED EXCLUSIVELY FOR OBTAINING REGULATORY APPROVALS AND DO NOT PURPORT TO BE CONSTRUCTION DRAWINGS OR SPECIFICATIONS.

**LOCATION MAP**

REPRODUCED FROM 2004 "BROUSSARD SE" LA AERIAL PHOTO



PREPARED BY:  
 C. L. JACK STELLY & ASSOCIATES, INC.  
 143 WALL STREET, LAFAYETTE, LA 70506  
 PH. (337) 237-0746  
 FILE NO. 20254-C3-R2.DWG

**PROPOSED MAINTENANCE PROJECT**

CYPRESS BAYOU / COULEE LASALLE

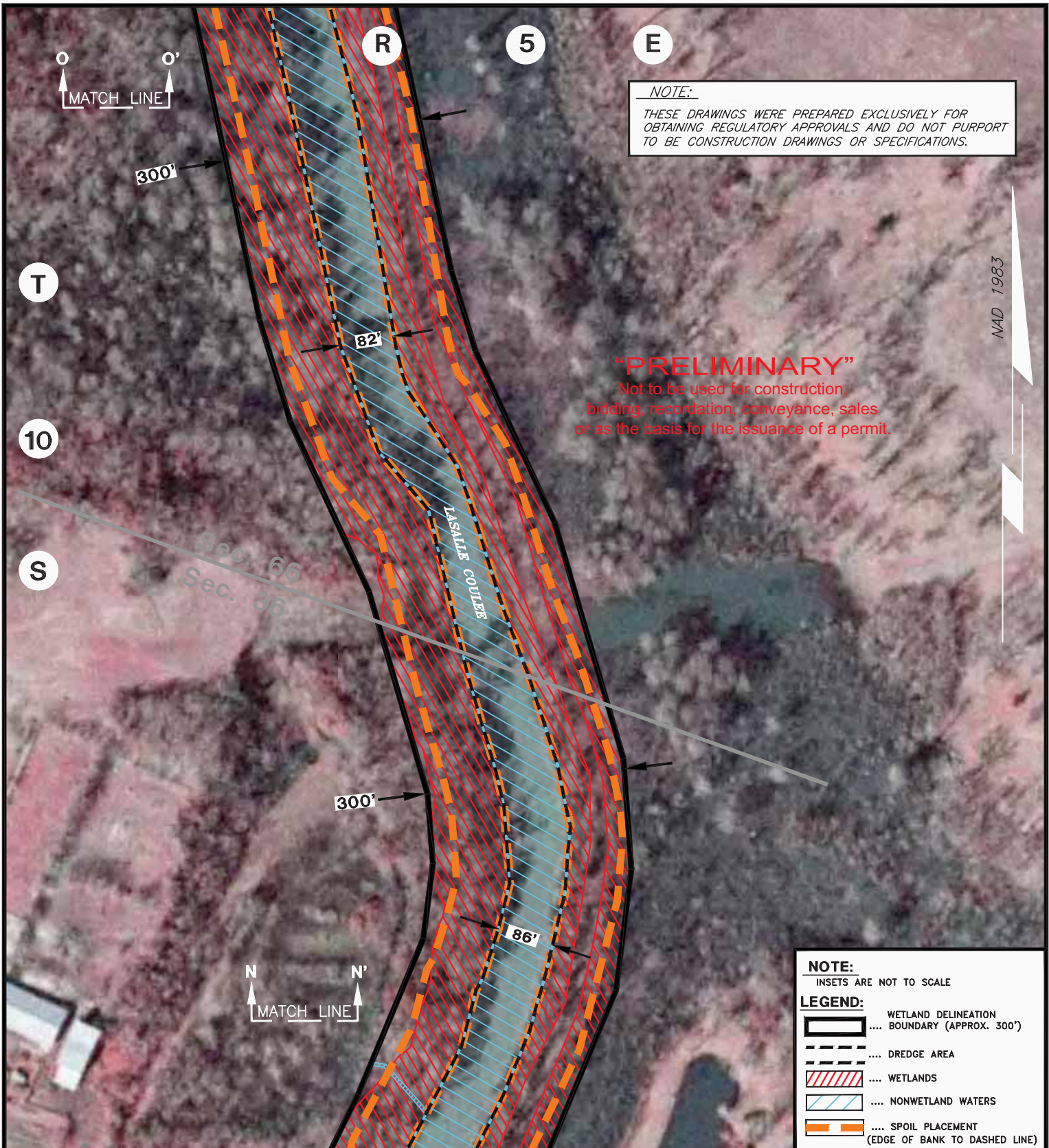
ST. MARTIN PARISH, LOUISIANA

APPLICATION BY:  
 APRIL 22, 2021

ST. MARTIN PARISH GOVERNMENT  
 LAFAYETTE, LOUISIANA

REVISIONS:

SHEET 14 OF 26



**NOTE:**  
 THESE DRAWINGS WERE PREPARED EXCLUSIVELY FOR OBTAINING REGULATORY APPROVALS AND DO NOT PURPORT TO BE CONSTRUCTION DRAWINGS OR SPECIFICATIONS.

**“PRELIMINARY”**  
 Not to be used for construction, bidding, recordation, conveyance, sales or as the basis for the issuance of a permit.

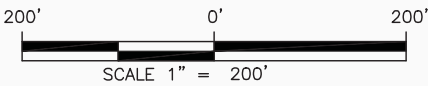
**NOTE:**  
 INSETS ARE NOT TO SCALE

**LEGEND:**

- WETLAND DELINEATION BOUNDARY (APPROX. 300')
- DREDGE AREA
- WETLANDS
- NONWETLAND WATERS
- SPOIL PLACEMENT (EDGE OF BANK TO DASHED LINE)

**LOCATION MAP**

REPRODUCED FROM 2004 "BROUSSARD SE" LA AERIAL PHOTO



**PROPOSED MAINTENANCE PROJECT**

CYPRESS BAYOU / COULEE LASALLE

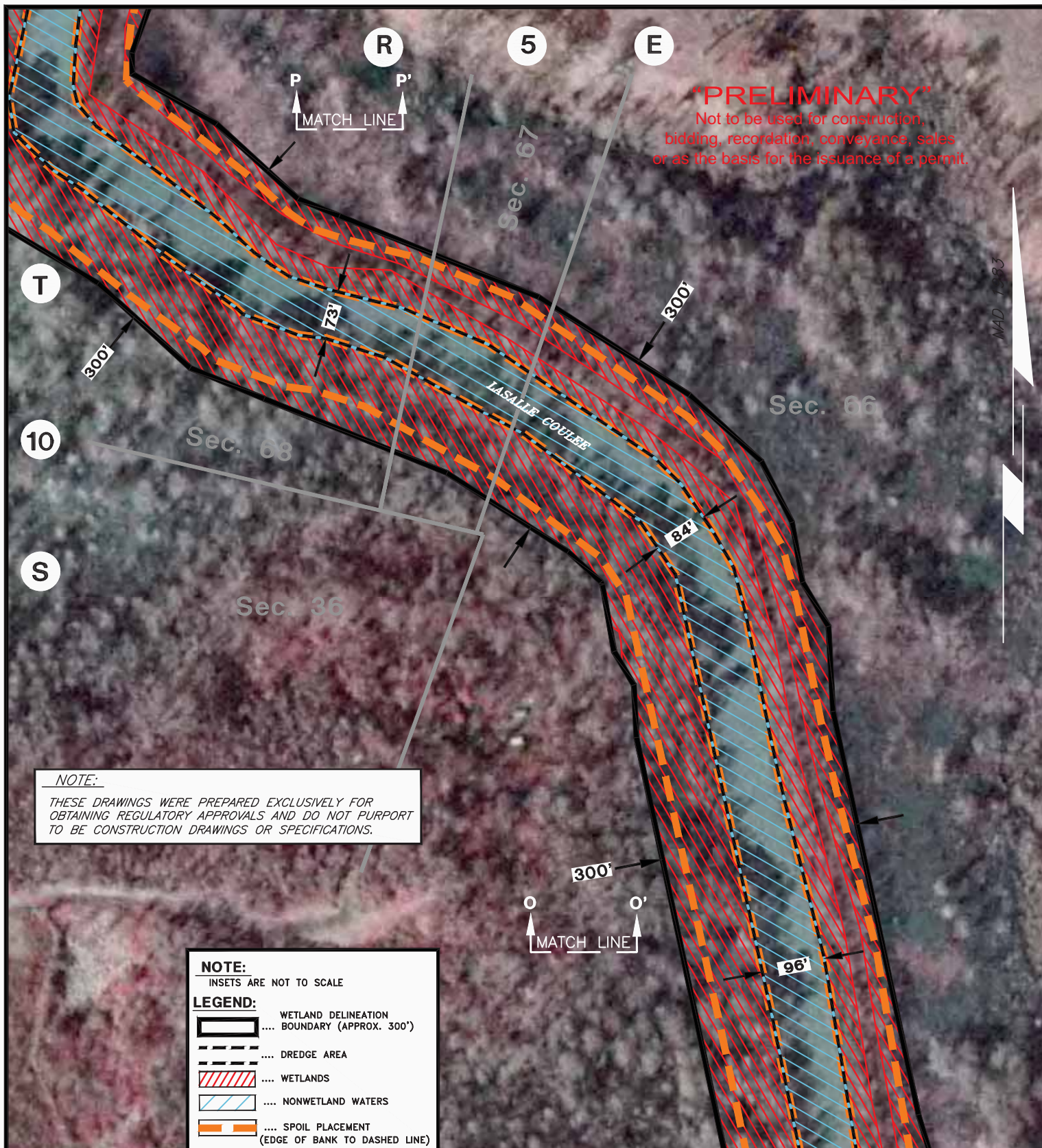
ST. MARTIN PARISH, LOUISIANA

APPLICATION BY:  
 APRIL 22, 2021

ST. MARTIN PARISH GOVERNMENT  
 LAFAYETTE, LOUISIANA

REVISIONS:

PREPARED BY:  
 C. L. JACK STELLY & ASSOCIATES, INC.  
 143 WALL STREET, LAFAYETTE, LA 70506  
 PH. (337) 237-0746  
 FILE NO. 20254-C3-R2.DWG



**"PRELIMINARY"**  
 Not to be used for construction,  
 bidding, recordation, conveyance, sales  
 or as the basis for the issuance of a permit.

**NOTE:**  
 THESE DRAWINGS WERE PREPARED EXCLUSIVELY FOR  
 OBTAINING REGULATORY APPROVALS AND DO NOT PURPORT  
 TO BE CONSTRUCTION DRAWINGS OR SPECIFICATIONS.

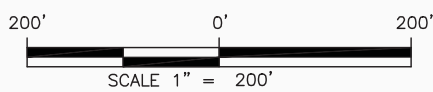
**NOTE:**  
 INSETS ARE NOT TO SCALE

**LEGEND:**

- WETLAND DELINEATION BOUNDARY (APPROX. 300')
- DREDGE AREA
- WETLANDS
- NONWETLAND WATERS
- SPOIL PLACEMENT (EDGE OF BANK TO DASHED LINE)

**LOCATION MAP**

REPRODUCED FROM 2004 "BROUSSARD SE" LA  
 AERIAL PHOTO



PREPARED BY:  
 C. L. JACK STELLY & ASSOCIATES, INC.  
 143 WALL STREET, LAFAYETTE, LA 70506  
 PH. (337) 237-0746  
 FILE NO. 20254-C3-R2.DWG

**PROPOSED MAINTENANCE PROJECT**

CYPRESS BAYOU / COULEE LASALLE

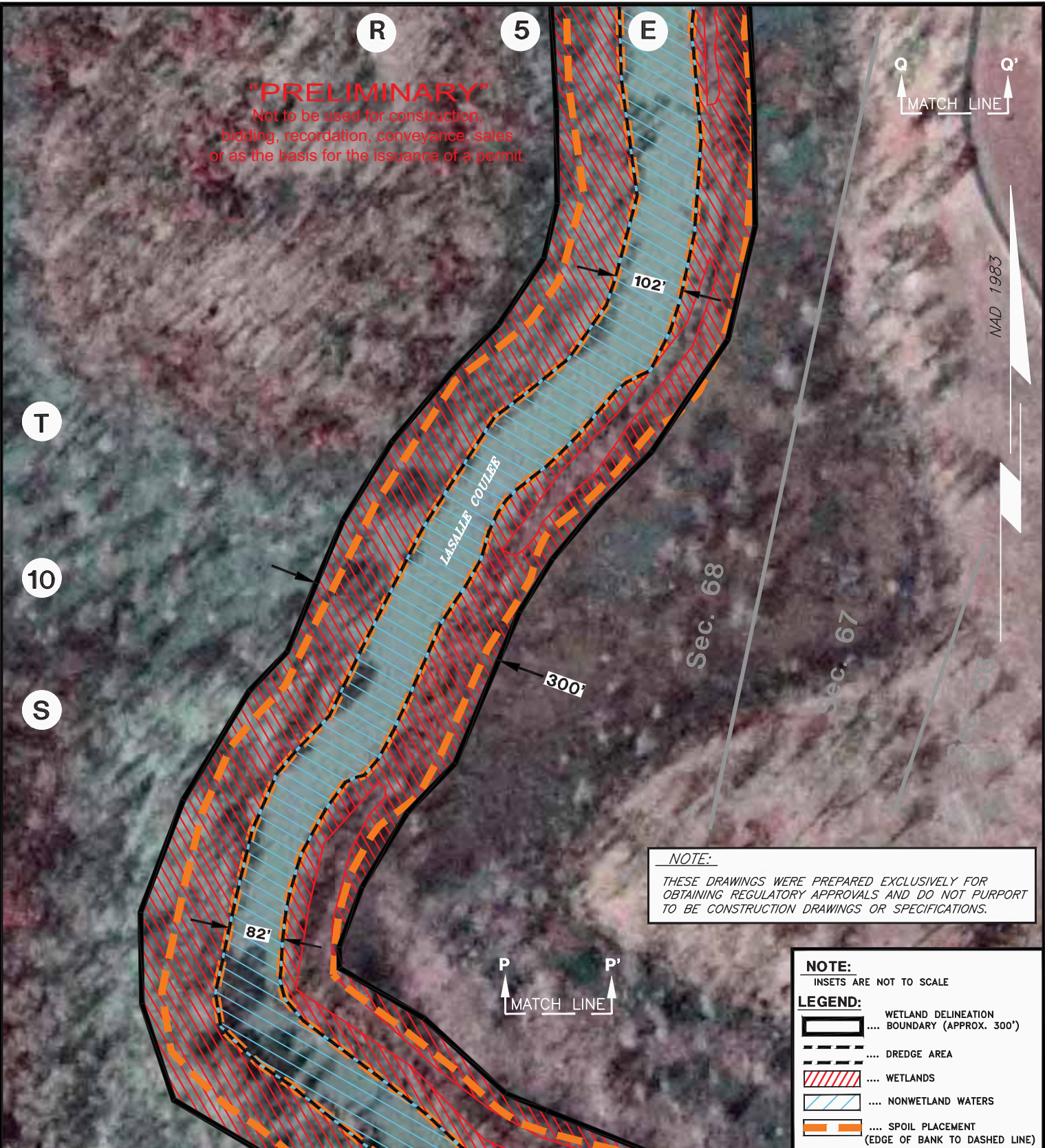
ST. MARTIN PARISH, LOUISIANA

APPLICATION BY:  
 APRIL 22, 2021

ST. MARTIN PARISH GOVERNMENT  
 LAFAYETTE, LOUISIANA

REVISIONS:

SHEET 16 OF 26



**"PRELIMINARY"**  
 Not to be used for construction,  
 bidding, recordation, conveyance, sales  
 or as the basis for the issuance of a permit.

**NOTE:**  
 THESE DRAWINGS WERE PREPARED EXCLUSIVELY FOR  
 OBTAINING REGULATORY APPROVALS AND DO NOT PURPORT  
 TO BE CONSTRUCTION DRAWINGS OR SPECIFICATIONS.

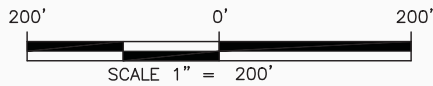
**NOTE:**  
 INSETS ARE NOT TO SCALE

**LEGEND:**

- .... WETLAND DELINEATION BOUNDARY (APPROX. 300')
- .... DREDGE AREA
- .... WETLANDS
- .... NONWETLAND WATERS
- .... SPOIL PLACEMENT (EDGE OF BANK TO DASHED LINE)

**LOCATION MAP**

REPRODUCED FROM 2004 "BROUSSARD SE" LA AERIAL PHOTO



PREPARED BY:  
 C. L. JACK STELLY & ASSOCIATES, INC.  
 143 WALL STREET, LAFAYETTE, LA 70506  
 PH. (337) 237-0746  
 FILE NO. 20254-C3-R2.DWG

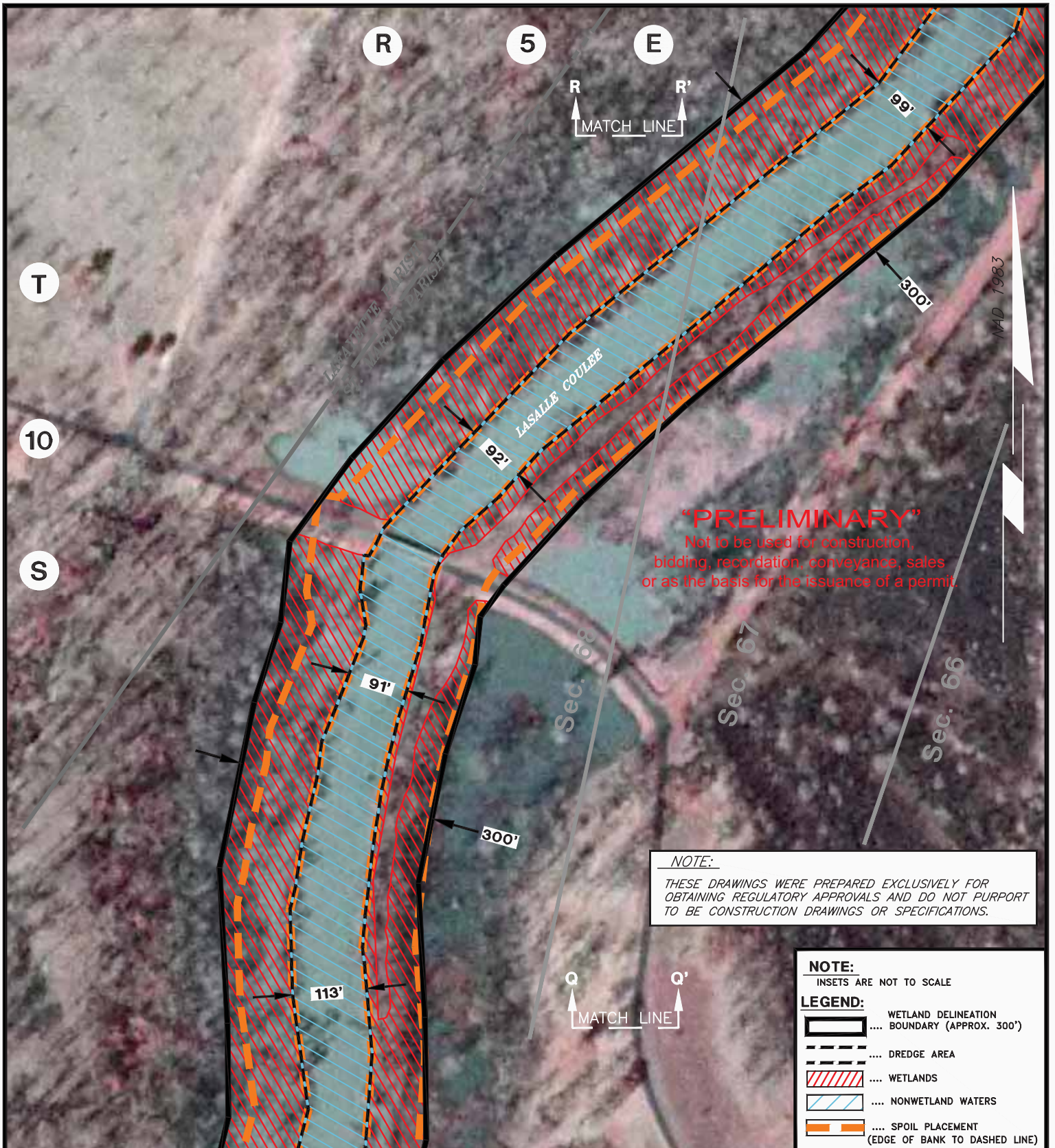
**PROPOSED MAINTENANCE PROJECT**

CYPRESS BAYOU / COULEE LASALLE  
 ST. MARTIN PARISH, LOUISIANA

APPLICATION BY:  
 APRIL 22, 2021

ST. MARTIN PARISH GOVERNMENT  
 LAFAYETTE, LOUISIANA

REVISIONS:



**NOTE:**  
 THESE DRAWINGS WERE PREPARED EXCLUSIVELY FOR OBTAINING REGULATORY APPROVALS AND DO NOT PURPORT TO BE CONSTRUCTION DRAWINGS OR SPECIFICATIONS.

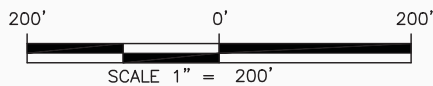
**NOTE:**  
 INSETS ARE NOT TO SCALE

**LEGEND:**

- WETLAND DELINEATION BOUNDARY (APPROX. 300')
- DREDGE AREA
- WETLANDS
- NONWETLAND WATERS
- SPOIL PLACEMENT (EDGE OF BANK TO DASHED LINE)

### LOCATION MAP

REPRODUCED FROM 2004 "BROUSSARD SE" LA AERIAL PHOTO



PREPARED BY:  
 C. L. JACK STELLY & ASSOCIATES, INC.  
 143 WALL STREET, LAFAYETTE, LA 70506  
 PH. (337) 237-0746  
 FILE NO. 20254-C3-R2.DWG

### PROPOSED MAINTENANCE PROJECT

CYPRESS BAYOU / COULEE LASALLE

ST. MARTIN PARISH, LOUISIANA






APPLICATION BY:  
 APRIL 22, 2021

ST. MARTIN PARISH GOVERNMENT  
 LAFAYETTE, LOUISIANA

REVISIONS:

**NOTE:**  
INSETS ARE NOT TO SCALE

**LEGEND:**

-  WETLAND DELINEATION BOUNDARY (APPROX. 300')
-  DREDGE AREA
-  WETLANDS
-  NONWETLAND WATERS
-  SPOIL PLACEMENT (EDGE OF BANK TO DASHED LINE)

**NOTE:**

THESE DRAWINGS WERE PREPARED EXCLUSIVELY FOR OBTAINING REGULATORY APPROVALS AND DO NOT PURPORT TO BE CONSTRUCTION DRAWINGS OR SPECIFICATIONS.

T

10

S

68 **"PRELIMINARY"**  
Not to be used for construction, bidding, recordation, conveyance, sales or as the basis for the issuance of a permit.

67

66

NAD 1983

R  
MATCH LINE  
R'

5  
S  
MATCH LINE  
S'

R

300'

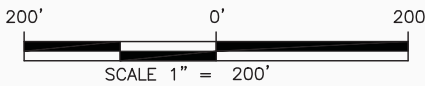
88'

84'

300'

**LOCATION MAP**

REPRODUCED FROM 2004 "BROUSSARD SE" LA AERIAL PHOTO



**PROPOSED MAINTENANCE PROJECT**

CYPRESS BAYOU / COULEE LASALLE

ST. MARTIN PARISH, LOUISIANA

APPLICATION BY:  
APRIL 22, 2021

ST. MARTIN PARISH GOVERNMENT  
LAFAYETTE, LOUISIANA

REVISIONS:

SHEET 19 OF 26

PREPARED BY:  
C. L. JACK STELLY & ASSOCIATES, INC.  
143 WALL STREET, LAFAYETTE, LA 70506  
PH. (337) 237-0746  
FILE NO. 20254-C3-R2.DWG

**NOTE:**

THESE DRAWINGS WERE PREPARED EXCLUSIVELY FOR OBTAINING REGULATORY APPROVALS AND DO NOT PURPORT TO BE CONSTRUCTION DRAWINGS OR SPECIFICATIONS.

Sta. 293+54.04  
**END COULEE**  
**LASALLE CONSTRUCTION**

NAD 1983  
 Lat. = 30° 09' 09.51"  
 Long. = 91° 54' 25.07"  
 X = 3,099,539.99  
 Y = 601,456.95'

NAD 1927 (South Zone)  
 X = 1,818,740.44'  
 Y = 540,749.93'

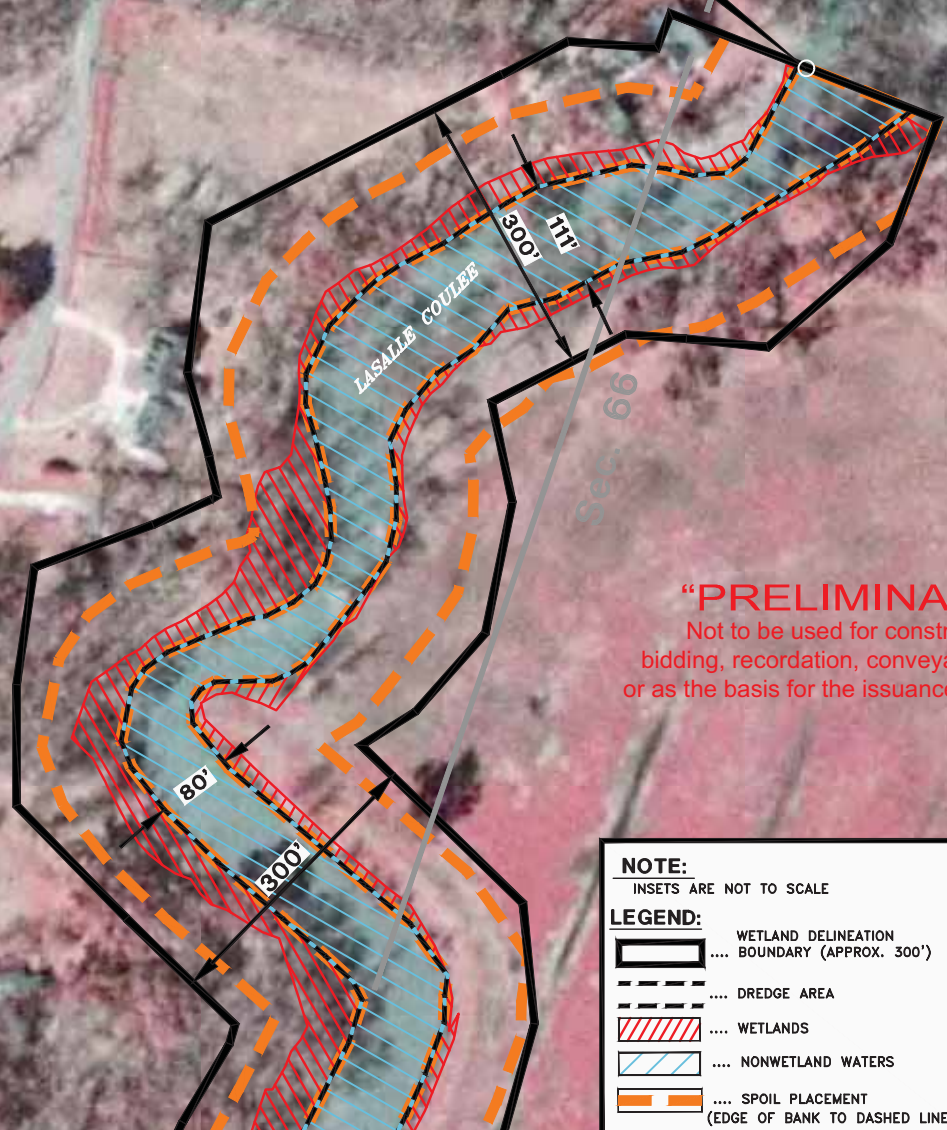
T  
10  
S

R 5 E  
R 6 E

Sec. 66  
Sec. 90

Sec. 105

NAD 1983



**“PRELIMINARY”**  
 Not to be used for construction,  
 bidding, recordation, conveyance, sales  
 or as the basis for the issuance of a permit.

S S'  
 MATCH LINE

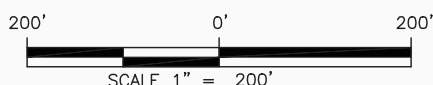
**NOTE:**  
 INSETS ARE NOT TO SCALE

**LEGEND:**

- WETLAND DELINEATION BOUNDARY (APPROX. 300')
- DREDGE AREA
- WETLANDS
- NONWETLAND WATERS
- SPOIL PLACEMENT (EDGE OF BANK TO DASHED LINE)

**LOCATION MAP**

REPRODUCED FROM 2004 "BROUSSARD SE" LA AERIAL PHOTO



PREPARED BY:  
 C. L. JACK STELLY & ASSOCIATES, INC.  
 143 WALL STREET, LAFAYETTE, LA 70506  
 PH. (337) 237-0746  
 FILE NO. 20254-C3-R2.DWG

**PROPOSED MAINTENANCE PROJECT**

CYPRESS BAYOU / COULEE LASALLE

ST. MARTIN PARISH, LOUISIANA

APPLICATION BY:  
APRIL 22, 2021

ST. MARTIN PARISH GOVERNMENT  
LAFAYETTE, LOUISIANA

REVISIONS:

R  
5  
E

T

11

S

300'

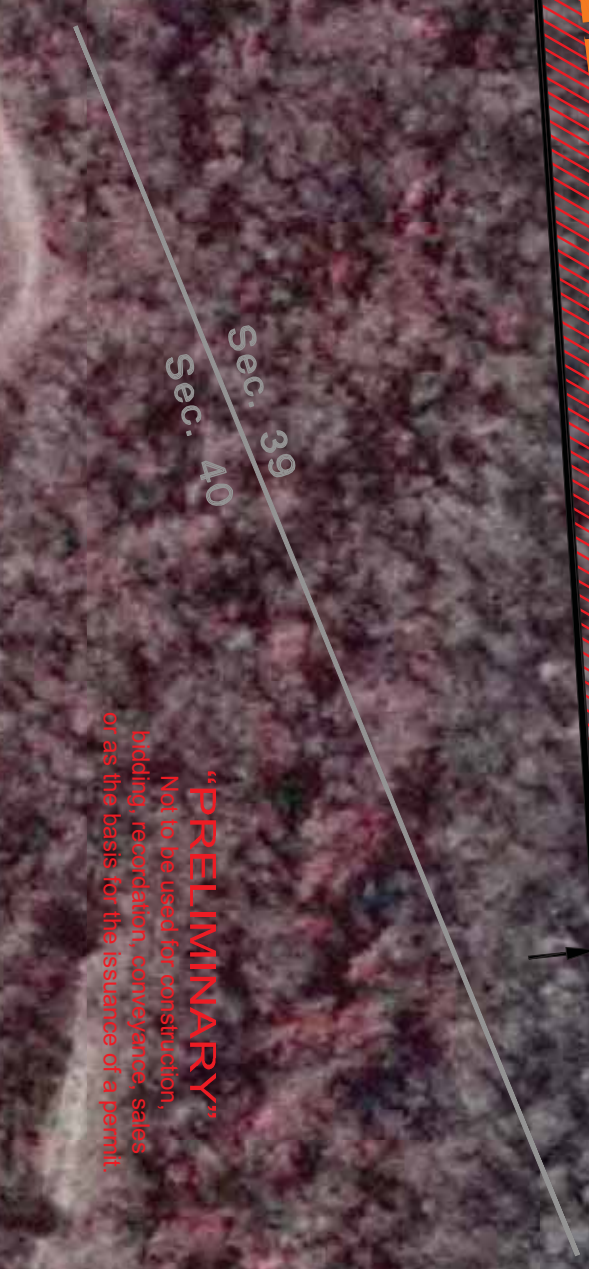
44'

22'

300'

DD  
MATCH LINE  
DD

cc  
MATCH LINE  
cc'



**“PRELIMINARY”**  
Not to be used for construction,  
bidding, recordation, conveyance, sales  
or as the basis for the issuance of a permit.

NAD 1983

**NOTE:**  
THESE DRAWINGS WERE PREPARED EXCLUSIVELY FOR  
OBTAINING REGULATORY APPROVALS AND DO NOT  
PURPORT TO BE CONSTRUCTION DRAWINGS OR SPECIFICATIONS.

**LOCATION MAP**  
REPRODUCED FROM 2004 "YOUNGVILLE NE" LA  
AERIAL PHOTO



PREPARED BY:  
C. L. JACK STELLY & ASSOCIATES, INC.  
143 WALL STREET, LAFAYETTE, LA 70506  
PH. (337) 237-0746  
FILE NO. 20254-C3-R2.DWG

**PROPOSED MAINTENANCE PROJECT**

CYPRESS BAYOU / COULEE LASALLE

ST. MARTIN PARISH, LOUISIANA

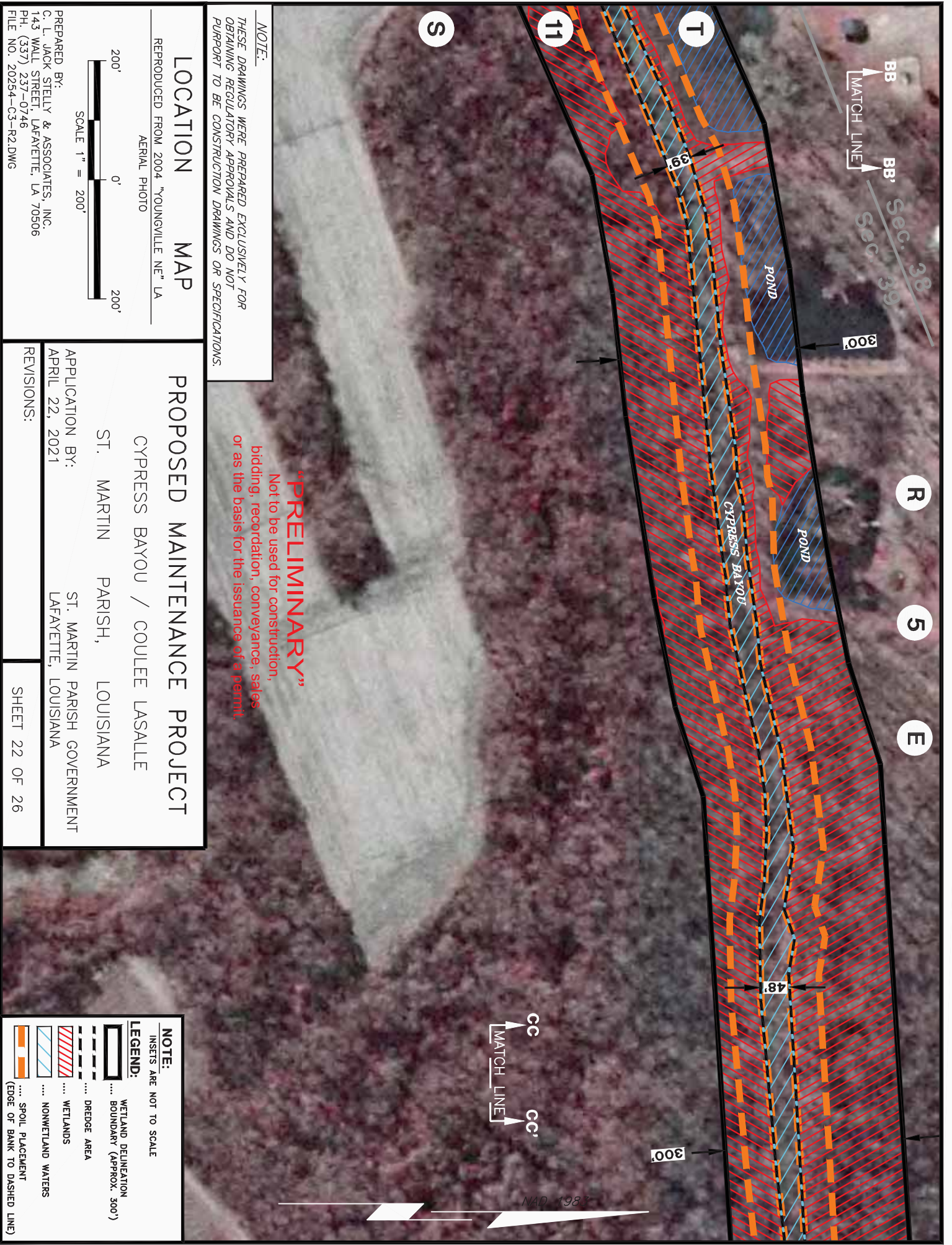
APPLICATION BY:  
ST. MARTIN PARISH GOVERNMENT  
APRIL 22, 2021

REVISIONS:  
SHEET 21 OF 26

**NOTE:**  
INSETS ARE NOT TO SCALE

LEGEND:	
	WETLAND DELINEATION BOUNDARY (APPROX. 300')
	DREDGE AREA
	WETLANDS
	NONWETLAND WATERS
	SPOIL PLACEMENT (EDGE OF BANK TO DASHED LINE)





**NOTE:**  
 THESE DRAWINGS WERE PREPARED EXCLUSIVELY FOR OBTAINING REGULATORY APPROVALS AND DO NOT PURPORT TO BE CONSTRUCTION DRAWINGS OR SPECIFICATIONS.

**"PRELIMINARY"**  
 Not to be used for construction, bidding, recordation, conveyance, sales or as the basis for the issuance of a permit.

**LOCATION MAP**

REPRODUCED FROM 2004 "YOUNGVILLE NE" LA AERIAL PHOTO

SCALE 1" = 200'

PREPARED BY:  
 C. L. JACK STELLY & ASSOCIATES, INC.  
 143 WALL STREET, LAFAYETTE, LA 70506  
 PH. (337) 237-0746  
 FILE NO. 20254-C3-R2.DWG

**PROPOSED MAINTENANCE PROJECT**

CYPRESS BAYOU / COULEE LASALLE

ST. MARTIN PARISH, LOUISIANA

APPLICATION BY:  
 ST. MARTIN PARISH GOVERNMENT  
 APRIL 22, 2021

REVISIONS:  
 SHEET 22 OF 26

**NOTE:**  
 INSERTS ARE NOT TO SCALE

**LEGEND:**

- WETLAND DELINEATION BOUNDARY (APPROX. 300')
- WETLANDS
- NONWETLAND WATERS
- DREDGE AREA
- SPOIL PLACEMENT (EDGE OF BANK TO DASHED LINE)

NAD 1983

**“PRELIMINARY”**  
 Not to be used for construction,  
 bidding, recordation, conveyance, sales  
 or as the basis for the issuance of a permit.

R 5 E

BB  
 MATCH LINE  
 BB'

Sec. 38  
 Sec. 39

T

11

S

300'






35'

AA  
 MATCH LINE  
 AA'

AVAD 1983

**NOTE:**  
 INSETS ARE NOT TO SCALE

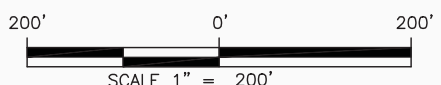
**LEGEND:**

-  WETLAND DELINEATION BOUNDARY (APPROX. 300')
-  DREDGE AREA
-  WETLANDS
-  NONWETLAND WATERS
-  SPOIL PLACEMENT (EDGE OF BANK TO DASHED LINE)

**NOTE:**  
 THESE DRAWINGS WERE PREPARED EXCLUSIVELY FOR  
 OBTAINING REGULATORY APPROVALS AND DO NOT  
 PURPORT TO BE CONSTRUCTION DRAWINGS OR SPECIFICATIONS.

**LOCATION MAP**

REPRODUCED FROM 2004 "YOUNGVILLE NE" LA  
 AERIAL PHOTO



PREPARED BY:  
 C. L. JACK STELLY & ASSOCIATES, INC.  
 143 WALL STREET, LAFAYETTE, LA 70506  
 PH. (337) 237-0746  
 FILE NO. 20254-C3-R2.DWG

**PROPOSED MAINTENANCE PROJECT**

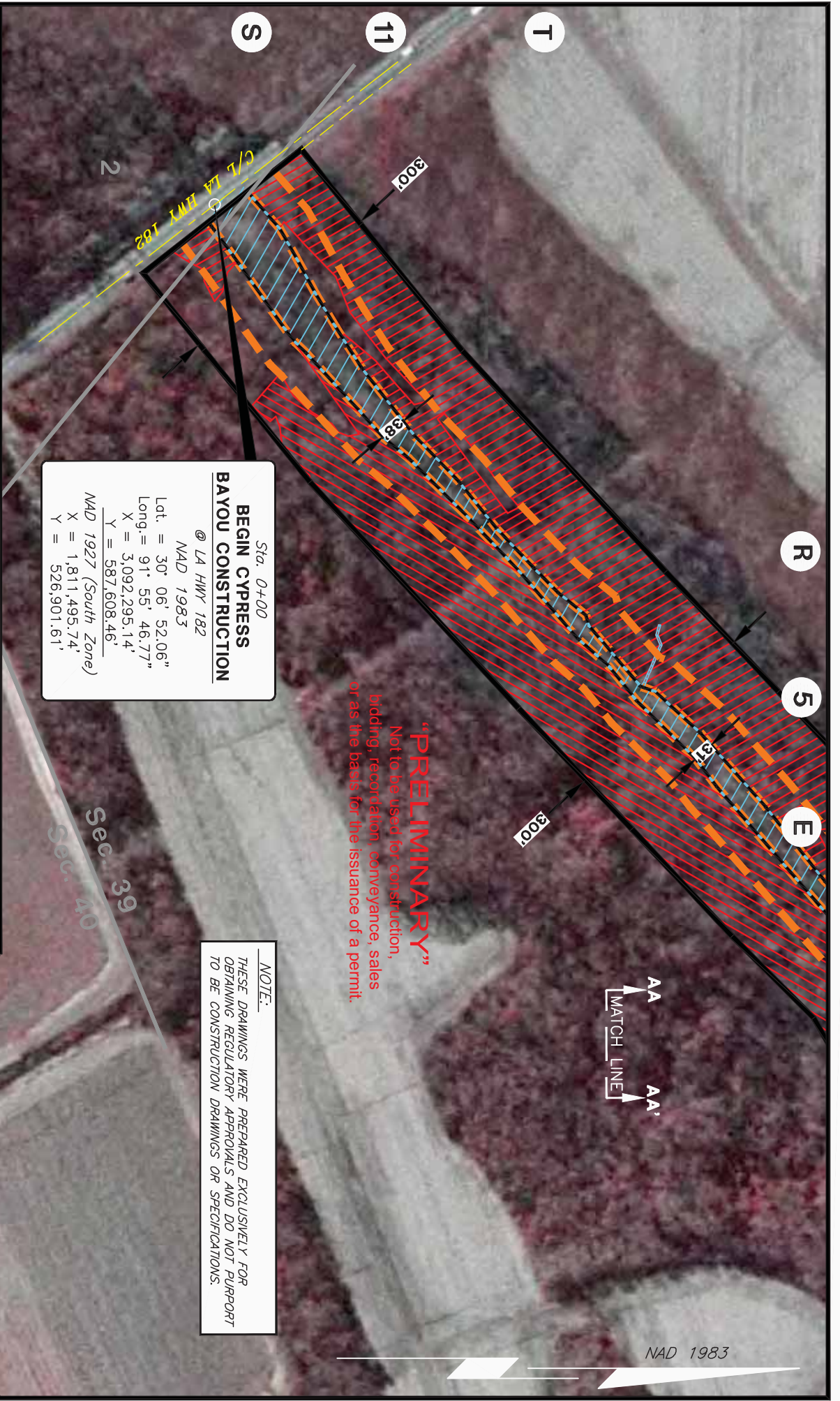
CYPRESS BAYOU / COULEE LASALLE

ST. MARTIN PARISH, LOUISIANA

APPLICATION BY:  
 APRIL 22, 2021

ST. MARTIN PARISH GOVERNMENT  
 LAFAYETTE, LOUISIANA

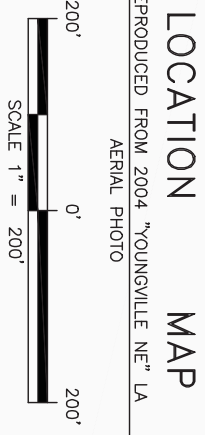
REVISIONS:



**“PRELIMINARY”**  
 Not to be used for construction, bidding, recortation, conveyance, sales or as the basis for the issuance of a permit.

**NOTE:**  
 THESE DRAWINGS WERE PREPARED EXCLUSIVELY FOR OBTAINING REGULATORY APPROVALS AND DO NOT PURPORT TO BE CONSTRUCTION DRAWINGS OR SPECIFICATIONS.

**BEGIN CYPRESS BAYOU CONSTRUCTION**  
 @ LA HWY 182  
 NAD 1983  
 Lat. = 30° 06' 52.06"  
 Long. = 91° 55' 46.77"  
 X = 3,092,295.14'  
 Y = 587,608.46'  
 NAD 1927 (South Zone)  
 X = 1,811,495.74'  
 Y = 526,901.61'



PREPARED BY:  
 C. L. JACK STELLY & ASSOCIATES, INC.  
 143 WALL STREET, LAFAYETTE, LA 70506  
 PH. (337) 237-0746  
 FILE NO. 20254-C3-R2.DWG

**PROPOSED MAINTENANCE PROJECT**  
 CYPRESS BAYOU / COULEE LASALLE

APPLICATION BY: ST. MARTIN PARISH GOVERNMENT  
 APRIL 22, 2021 LAFAYETTE, LOUISIANA

REVISIONS: SHEET 24 OF 26

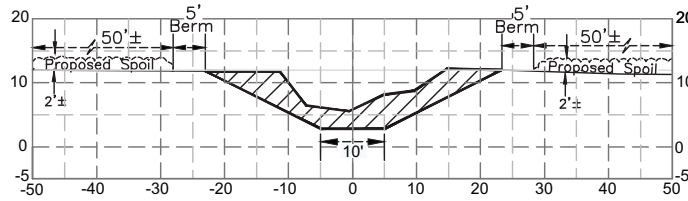
**NOTE:**  
 INSERTS ARE NOT TO SCALE

**LEGEND:**

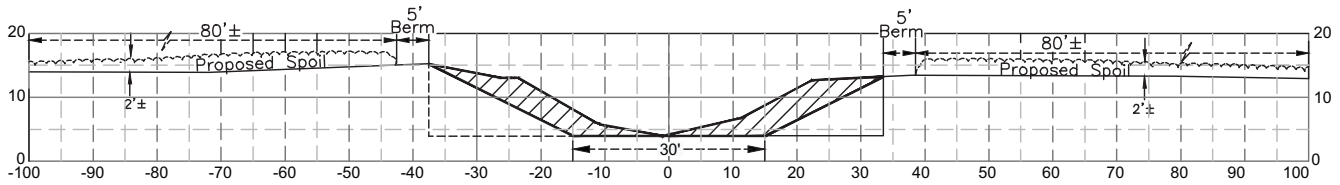
	WETLAND DELINEATION BOUNDARY (APPROX. 300')
	WETLANDS
	NONWETLAND WATERS
	DREDGE AREA
	SPILL PLACEMENT (EDGE OF BANK TO DASHED LINE)

 .....PROPOSED DREDGING OF CYPRESS BAYOU AND COULEE LASALLE

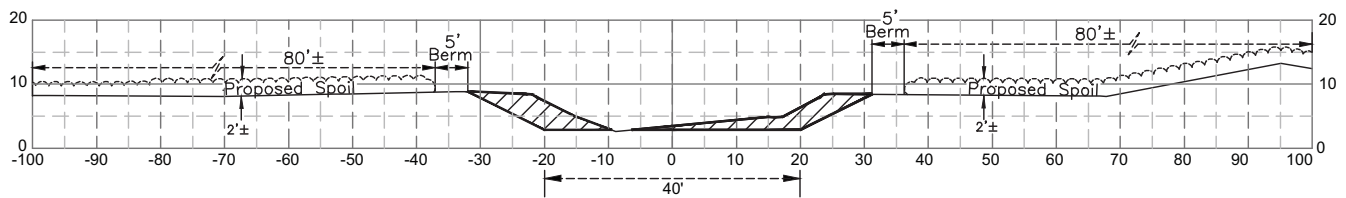
## CYPRESS BAYOU X-SEC A-A



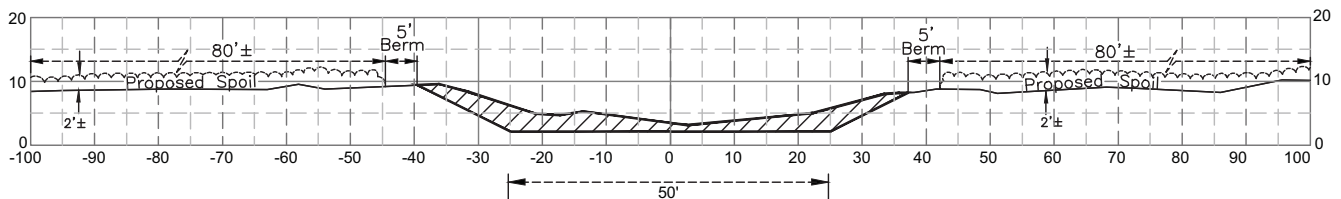
## COULEE LASALLE X-SEC B-B



## X-SEC C-C



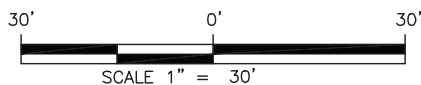
## X-SEC D-D



**NOTE:**

THESE DRAWINGS WERE PREPARED EXCLUSIVELY FOR OBTAINING REGULATORY APPROVALS AND DO NOT PURPORT TO BE CONSTRUCTION DRAWINGS OR SPECIFICATIONS.

**“PRELIMINARY”**  
Not to be used for construction, bidding, recordation, conveyance, sales or as the basis for the issuance of a permit.



## PROPOSED MAINTENANCE PROJECT

CYPRESS BAYOU / COULEE LASALLE

ST. MARTIN PARISH, LOUISIANA

APPLICATION BY:  
APRIL 22, 2021

ST. MARTIN PARISH GOVERNMENT  
LAFAYETTE, LOUISIANA

REVISIONS:

SHEET 25 OF 26

PREPARED BY:  
C. L. JACK STELLY & ASSOCIATES, INC.  
143 WALL STREET, LAFAYETTE, LA 70506  
PH. (337) 237-0746  
FILE NO. 20254-C3-R2.DWG

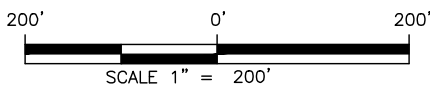
**NOTES:**

- 1.) Project footprint is approximately 246 Acres. Approximately 500,000 cubic yards of excavation required for proposed drainage maintenance.
- 2.) Proposed spoil to be placed within 50'(+/-) clearing on both sides of Cypress Bayou, and within the 80'(+/-) clearing on both sides of Coulee Lasalle.
- 3) The project will be accessed from existing roads and within the project footprint.
- 4) In order to ensure the safety of all parties, the permittee shall contact the LOUISIANA ONE CALL at (1-800-272-3020) a minimum of 48 hours prior to the commencement of any excavation or demolition activity.

**NOTE:**

*THESE DRAWINGS WERE PREPARED EXCLUSIVELY FOR OBTAINING REGULATORY APPROVALS AND DO NOT PURPORT TO BE CONSTRUCTION DRAWINGS OR SPECIFICATIONS.*

**“PRELIMINARY”**  
Not to be used for construction,  
bidding, recordation, conveyance, sales  
or as the basis for the issuance of a permit.



**PROPOSED MAINTENANCE PROJECT**

CYPRESS BAYOU / COULEE LASALLE

ST. MARTIN PARISH, LOUISIANA

APPLICATION BY:  
APRIL 22, 2021

ST. MARTIN PARISH GOVERNMENT  
LAFAYETTE, LOUISIANA

PREPARED BY:  
C. L. JACK STELLY & ASSOCIATES, INC.  
143 WALL STREET, LAFAYETTE, LA 70506  
PH. (337) 237-0746  
FILE NO. 20254-C3-R2.DWG

REVISIONS:

SHEET 26 OF 26