

# **JOINT PUBLIC NOTICE**

## **April 18, 2022**

United States Army Corps of Engineers  
New Orleans District  
Regulatory Division  
7400 Leake Avenue  
New Orleans, Louisiana 70118

Project Manager:  
Jamie Crowe  
(504) 862-2675  
Jamie.M.Crowe@usace.army.mil  
Application #: MVN 2020-00658 CO

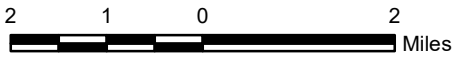
### **ERRATUM**

#### **PROPOSED RAIL YARD EXPANSION AT AN EXISTING FACILITY IN ASCENSION PARISH**

Public Notice, MVN-2020-00658-CO, dated March 21, 2022, described work proposed by BASF Corporation. The purpose of this erratum is to change the drawings accompanying the public notice. The drawings included with the previous public notice were for a heavy haul road, not the proposed rail yard expansion. The correct drawings are enclosed. Therefore, comments will be accepted until 20 days from the date of this public notice.

For: JOHN M. HERMAN  
Chief, Central Evaluation Branch  
Regulatory Division

Enclosures



**Legend**

 Impact Area (11.15 Acres)

**Reference**

Base map comprised of ESRI StreetMap USA data.

**Vicinity Map**

Section 404 Permit Application  
Ascension Parish, Louisiana

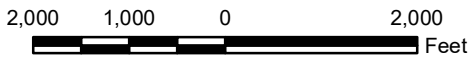
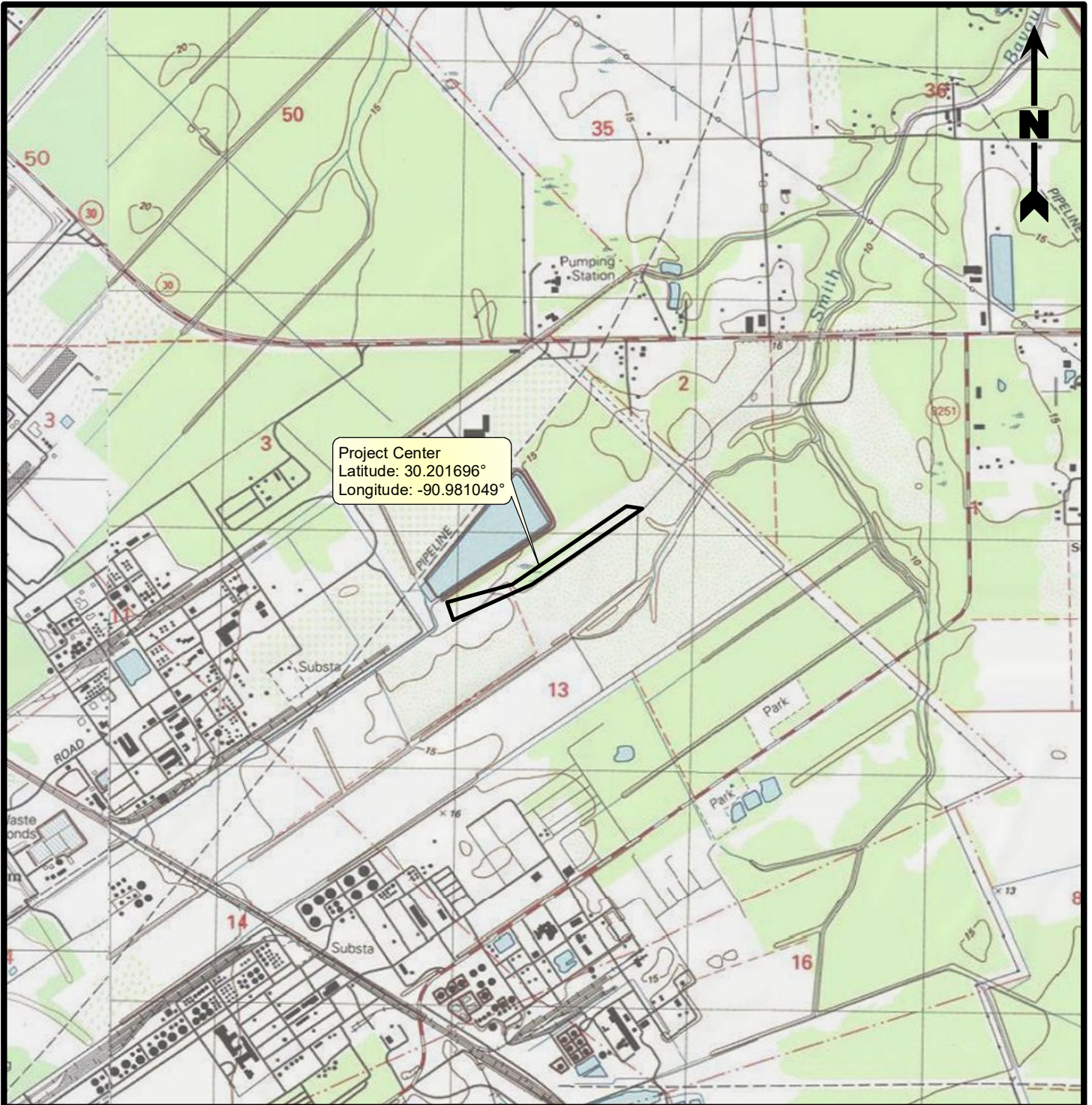
**BASF Corporation**  
Railroad Expansion Project



**PROVIDENCE**

Drawn By	TDJ	6/24/2021
Checked By	TK	6/24/2021
Approved By	RPC	6/24/2021

Project Number 010-072	<b>1</b> Figure
Drawing Number 010-072-A026	



**Legend**

 Impact Area (11.15 Acres)

**Reference**

Base map comprised of United States Geological Survey (USGS) 7.5-minute topographic maps, "Carville, LA" and "Gonzales, LA".

**Site Location Map**

Section 404 Permit Application  
Ascension Parish, Louisiana

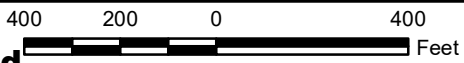
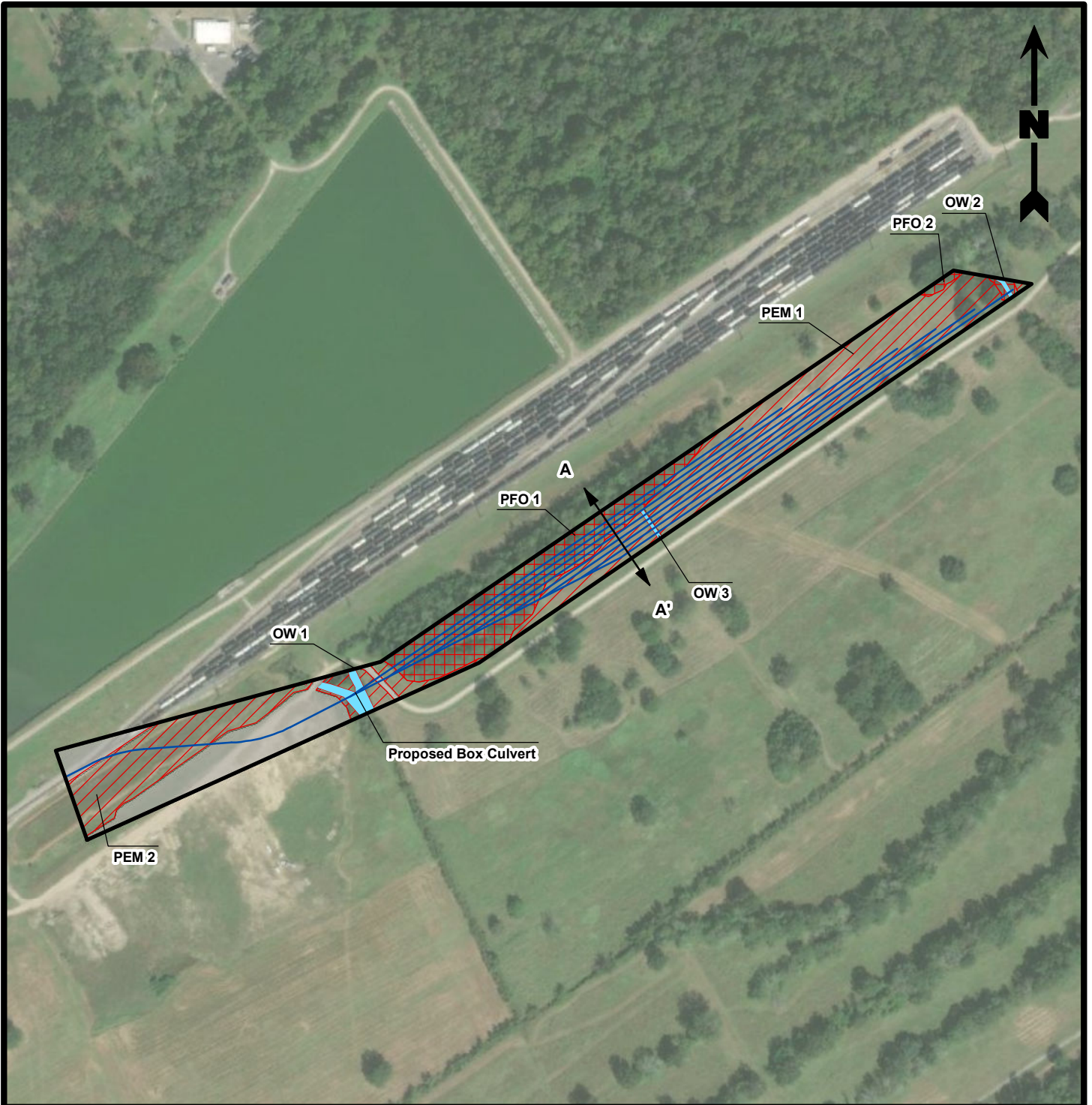
**BASF Corporation**  
Railroad Expansion Project



**PROVIDENCE**

Drawn By	TDJ	6/24/2021
Checked By	TK	6/24/2021
Approved By	RPC	6/24/2021

Project Number	<b>2</b> Figure
010-072	
Drawing Number	
010-072-A027	



**Legend**

- Impact Area (11.15 Acres)
- Impacted Other Waters of the U.S. (0.19 Acre)
- Impacted Jurisdictional Palustrine Emergent Wetlands (6.66 Acres)
- Impacted Jurisdictional Palustrine Forested Wetlands (2.34 Acres)
- Uplands (1.96 Acres)
- Proposed Track Locations

**Reference**

ESRI's World Imagery exported 6/22/2021.

**Aerial Photograph**

Section 404 Permit Application  
Ascension Parish, Louisiana

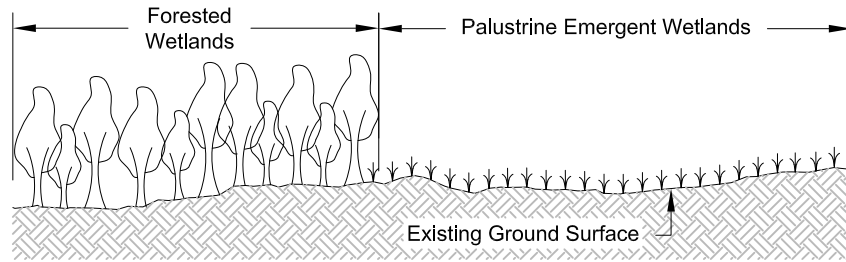
**BASF Corporation**  
Railroad Expansion Project



**PROVIDENCE**

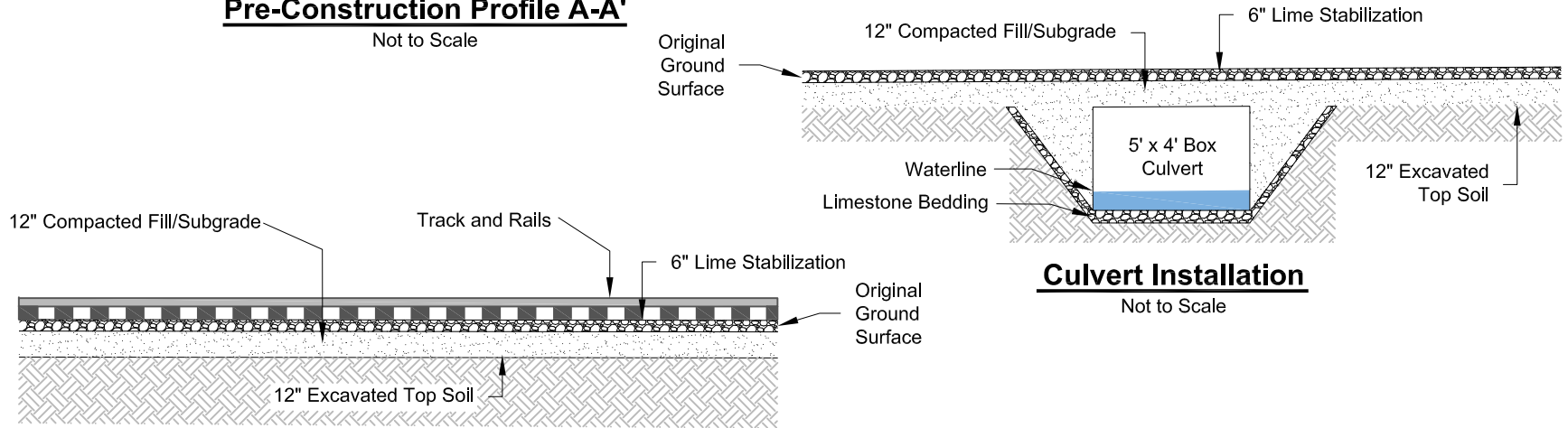
Drawn By	TDJ	6/24/2021
Checked By	TK	6/24/2021
Approved By	RPC	6/24/2021

Project Number 010-072	<b>3</b> Figure
Drawing Number 010-072-A028	



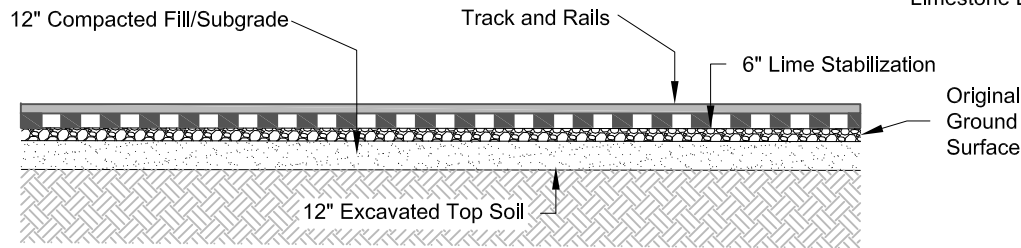
**Pre-Construction Profile A-A'**

Not to Scale



**Culvert Installation**

Not to Scale



**Post-Construction Profile A-A'**

Not to Scale

**Notes**

1. All top soil removed will be hauled off and placed in an upland area.
2. Fill material will consist of 12" compacted fill/subgrade and 6" lime stabilization.
3. Lime stabilization = 7,018 yd<sup>3</sup>
4. Compacted fill = 13,530 yd<sup>3</sup>
5. Excavated top soil = 14,036 yd<sup>3</sup>
6. Limestone bedding = 363 yd<sup>3</sup>

**Details**

**Section 404 Permit Application**  
Ascension Parish, Louisiana

**BASF Corporation**  
Railroad Expansion Project



Drawn By	TDJ	6/22/21
Checked By	TDJ	6/22/21
Approved By	TCK	6/22/21

Project Number	<b>4</b> Figure
010-072	
Drawing Number	
010-072-A029	