

JOINT PUBLIC NOTICE

August 12, 2019

United States Army Corps of Engineers
New Orleans District
Regulatory Branch
7400 Leake Avenue
New Orleans, Louisiana 70118

State of Louisiana
Department of Environmental Quality
Water Permits Division
Post Office Box 4313
Baton Rouge, Louisiana 70821-4313

(504) 862-1577
Project Manager
Patricia Clune
Patricia.R.Clune@usace.army.mil
MVN 2019-00352-CE

(225) 219-3225
Project Manager
Elizabeth Hill
WQC Application Number
WQC #190514-02

Interested parties are hereby notified that a permit application has been received by the New Orleans District of the U.S. Army Corps of Engineers pursuant to: [X] Section 10 of the Rivers and Harbors Act of March 3, 1899 (30 Stat. 1151; 33 USC 403); and/or [X] Section 404 of the Clean Water Act (86 Stat. 816; 33 USC 1344).

Application has also been made to the Louisiana Department of Environmental Quality, Water Permits Division, for a Water Quality Certification (WQC) in accordance with statutory authority contained in LRS30:2047 A(3), and provisions of Section 401 of the Clean Water Act (P.L.95-17).

PROPOSED BREAKWATER AND NAVIGATION CHANNEL IN CAMINADA BAY AND BAYOU THUNDER IN LAFOURCHE AND JEFFERSON PARISHES

NAME OF APPLICANT: Grand Isle Independent Levee District, c/o AIMS Group Inc., 4421 Zenith Street, Metairie, Louisiana 70001.

LOCATION OF WORK: In Caminada Bay and Bayou Thunder (Latitude: 29.198047, Longitude: -90.087103) near Grand Isle, Louisiana, in Lafourche and Jefferson Parishes, within the East Central Louisiana Coastal basin in hydrological unit (HUC 08090301), as shown on the attached drawings.

CHARACTER OF WORK: The applicant has requested Department of the Army authorization to install shoreline protection along north side of LA Hwy 1 and Cheniere Caminada to prevent land loss. The proposed project will entail the construction of a temporary access channel, spoil banks, permanent navigation channel in Bayou Thunder and the placement of rip-rap breakwaters. Approximately 171,205 cubic yards of material will be dredged to create the temporary access channel. Of this, approximately 92,311 cubic yards will be side-casted temporarily while the remaining 78,894 cubic yards dredged from Bayou Thunder will be sprayed over existing marsh for approximately 200 feet as not to exceed 6-inches and to provide marsh nourishment. Approximately 201,460 cubic yards of rip-rap will be installed to create breakwaters.

Project implementation will result in approximately 106.96 acres of impact to open waterbottoms. The project will not impact the adjacent marsh habitat.

The comment period for the Department of the Army Permit and the Louisiana Department of Environmental Quality WQC will close **20 days** from the date of this joint public notice. Written comments, including suggestions for modifications or objections to the proposed work, stating reasons thereof, are being solicited from anyone having interest in this permit and/or this WQC request and must be mailed so as to be received before or by the last day of the comment period. Letters concerning the Corps of Engineers permit modification application must reference the applicant's name and the Permit Application Number, and be mailed to the Corps of Engineers at the address above, **ATTENTION: REGULATORY BRANCH**. **Similar letters concerning the Water Quality Certification must reference the applicant's name and the WQC Application number and be mailed to the Louisiana Department of Environmental Quality at the address above.** Individuals or parties may request an extension of time in which to comment on the proposed work by writing or e-mailing the Corps of Engineers Project Manager listed above. Any request must be specific and substantively supportive of the requested extension, and received by this office prior to the end of the initial comment period. The Section Chief will review the request and the requestor will be promptly notified of the decision to grant or deny the request. If granted, the time extension will be continuous to the initial comment period and, inclusive of the initial comment period, will not exceed a total of 30 calendar days.

The application for this proposed project is on file with the Louisiana Department of Environmental Quality and may be examined during weekdays between 8:00 a.m. and 4:30 p.m. Copies may be obtained upon payment of costs of reproduction.

Corps of Engineers Permit Criteria

The decision whether to issue a permit will be based on an evaluation of the probable impacts, including cumulative impacts of the proposed activity on the public interest. That decision will reflect the national concern for both protection and utilization of important resources. The benefit which reasonably may be expected to accrue from the proposal must be balanced against its reasonably foreseeable detriments. All factors which may be relevant to the proposal will be considered including the cumulative effects thereof; among those are conservation, economics, aesthetics, general environmental concerns, wetlands, historic properties, fish and wildlife values, flood hazards, floodplain values, land use, navigation, shoreline erosion and accretion, recreation, water supply and conservation, water quality, energy needs, safety, food and fiber production, mineral needs, considerations of property ownership and, in general, the needs and welfare of the people.

The U.S. Army Corps of Engineers is soliciting comments from the public, federal, state, and local agencies and officials, Indian Tribes, and other interested parties in order to consider and evaluate the impacts of this proposed activity. Any

comments received will be considered by the U.S. Army Corps of Engineers to determine whether to make, modify, condition, or deny a permit for this proposal. To make this decision, comments are used to assess impacts on endangered species, historic properties, water quality, general environmental effects, and other public interest factors listed above. Comments are used in the preparation of an Environmental Assessment and/or an Environmental Impact Statement pursuant to the National Environmental Policy Act. Comments are also used to determine the need for a public hearing and to determine the overall public interest of the proposed activity.

The New Orleans District is unaware of properties listed on the National Register of Historic Places near the proposed work. The possibility exists that the proposed work may damage or destroy presently known archeological, scientific, prehistorical, historical sites, or data. Copies of this notice are being sent to the State Archeologist and the State Historic Preservation Officer.

Our initial finding is that the proposed work would not affect any species, nor affect any habitat designated as critical to the survival and recovery of such species, listed as endangered by the U.S. Department of Interior. The New Orleans District has determined that the proposed project is located in waters known to be utilized by the West Indian Manatee (*Trichechus manatus*). Utilizing Standard Local Operating Procedure for Endangered Species in Louisiana (SLOPES), dated October 22, 2014, between the U.S. Army Corps of Engineers, New Orleans and U.S. Fish and Wildlife Service, Ecological Services Office, the Corps has determined that with the inclusion of the Standard Manatee Conditions for In-Water Activities, proposed work is not likely to adversely affect the West Indian Manatee.

This notice initiates the Essential Fish Habitat (EFH) consultation requirements of the Magnuson-Stevens Fishery Conservation and Management Act. The applicant's proposal would result in the destruction or alteration of up to 46 acres of EFH utilized by various life stages of red drum and penaeid shrimp. Our initial determination is that the proposed action would not have a substantial adverse impact on EFH or federally managed fisheries in the Gulf of Mexico. Our final determination relative to project impacts and the need for mitigation measures is subject to review by and coordination with the National Marine Fisheries Service.

If the proposed work involves deposits of dredged or fill material into navigable waters, the evaluation of the probable impacts will include the application of guidelines established by the Administrator of the Environmental Protection Agency. Also, a certification that the proposed activity will not violate applicable water quality standards will be required from the Department of Environmental Quality, Water Permits Division before a permit is issued.

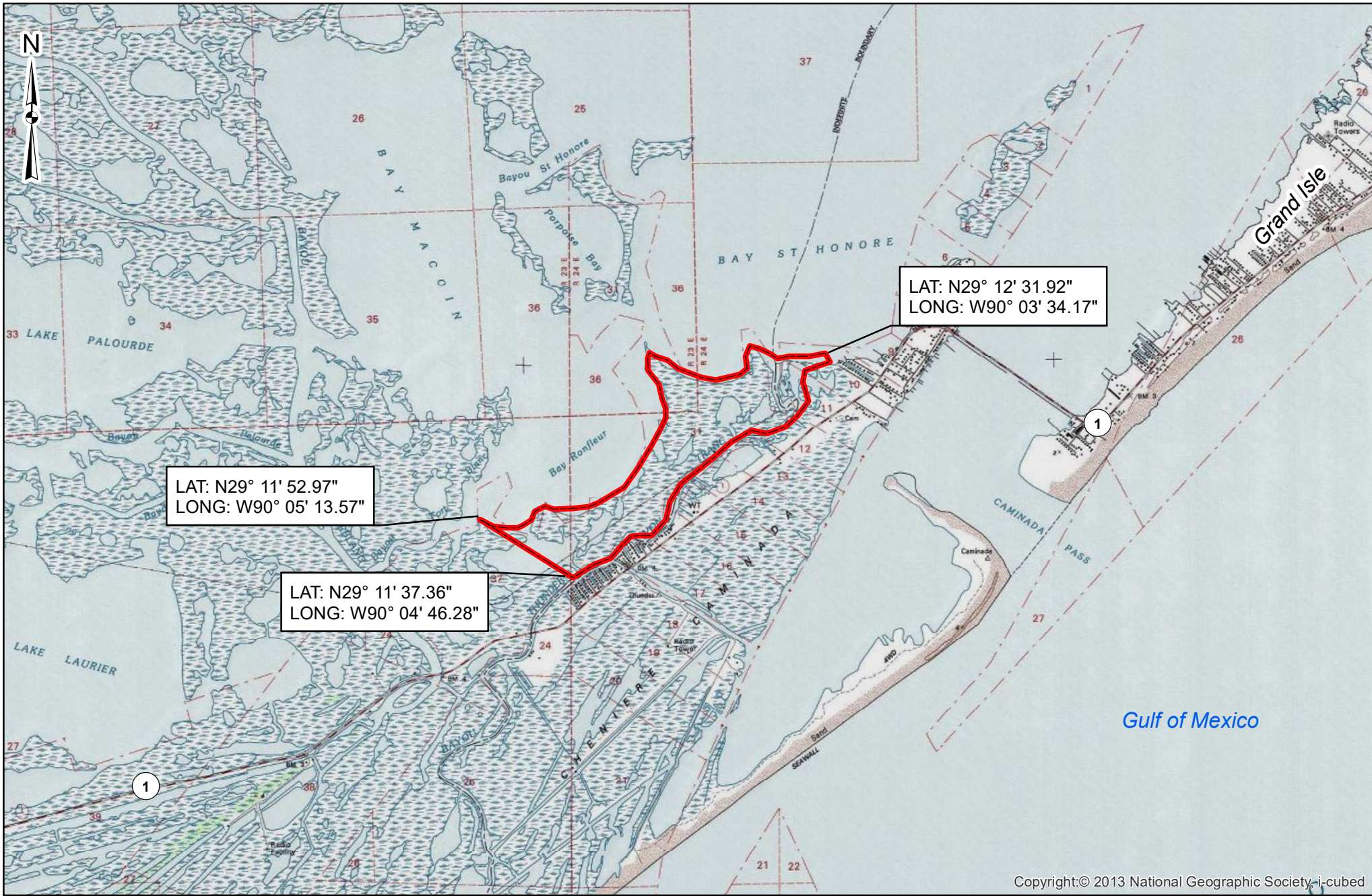
Any person may request, in writing, within the comment period specified in this notice, that a public hearing be held to consider this application. Requests for public hearings shall state, with particularity, the reasons for holding a public hearing. You are

requested to communicate the information contained in this notice to any other parties whom you deem likely to have interest in the matter.

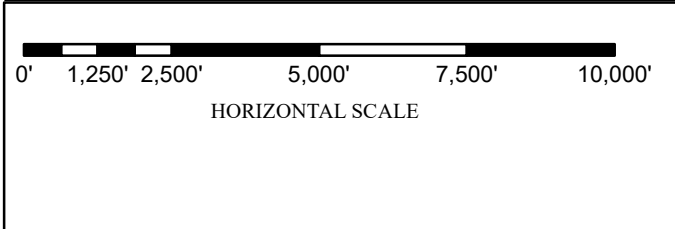
The applicant has certified that the proposed activity described in the application complies with and will be conducted in a manner that is consistent with the Louisiana Coastal Resources Program (Louisiana Coastal Zone Application P20190044). The Department of the Army permit will not be issued unless the applicant received approval or a waiver of the Coastal Use Permit by the Department of Natural Resources.

For John M Herman
Chief, Central Evaluation Section
Regulatory Branch

Enclosure



Copyright:© 2013 National Geographic Society, i-cubed



VICINITY MAP

**CHENIERE CAMINADA SEGMENTED
BREAKWATER AND BAYOU THUNDER ROCK DIKE
LAFOURCHE PARISH AND JEFFERSON PARISH,
LOUISIANA**

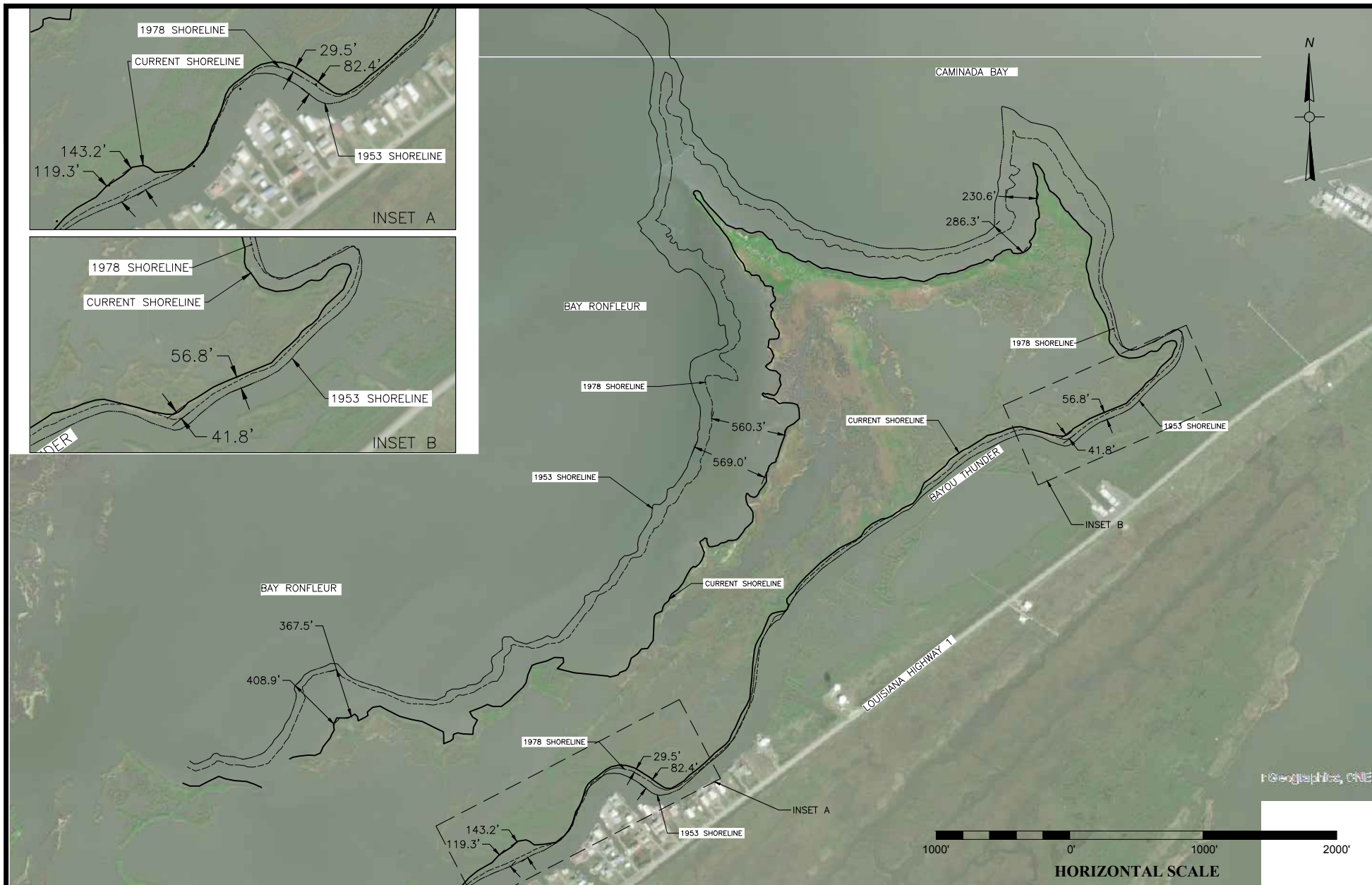
DRAWN BY: ELP



AIMS Group, Inc.
Consulting Engineers

4421 Zenith Street Ph. 504.887.7045
Metairie, LA 70001 Fax. 504.887.7088

PROJECT #: A17-029 DATE: 06/06/2019 FIGURE: 1



SHORELINE MAP

CHENIERE CAMINADA SEGMENTED
 BREAKWATER AND BAYOU THUNDER ROCK DIKE
 LAFORUCHE PARISH AND JEFFERSON PARISH,
 LOUISIANA

DRAWN BY: RMH



AIMS Group, Inc.
Consulting Engineers




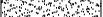
4421 Zenith Street
 Metairie, LA 70001

Ph. 504.887.7045
 Fax. 504.887.7088

PROJECT #: A17-029 DATE: 06/06/2019 FIGURE 2



LEGEND

- OHE — OVERHEAD POWER LINES
- // UNDERGROUND GAS LINE
- CENTERLINE
-  PROPOSED ACCESS CHANNEL
-  PROPOSED BREAKWATERS
-  PROPOSED SPOIL BANK
-  SPRAY DREDGING EXTENTS

DRAWN BY: RMH

KEY MAP

CHENIERE CAMINADA SEGMENTED
BREAKWATER AND BAYOU THUNDER ROCK DIKE
LAFOURCHE PARISH AND JEFFERSON PARISH,
LOUISIANA

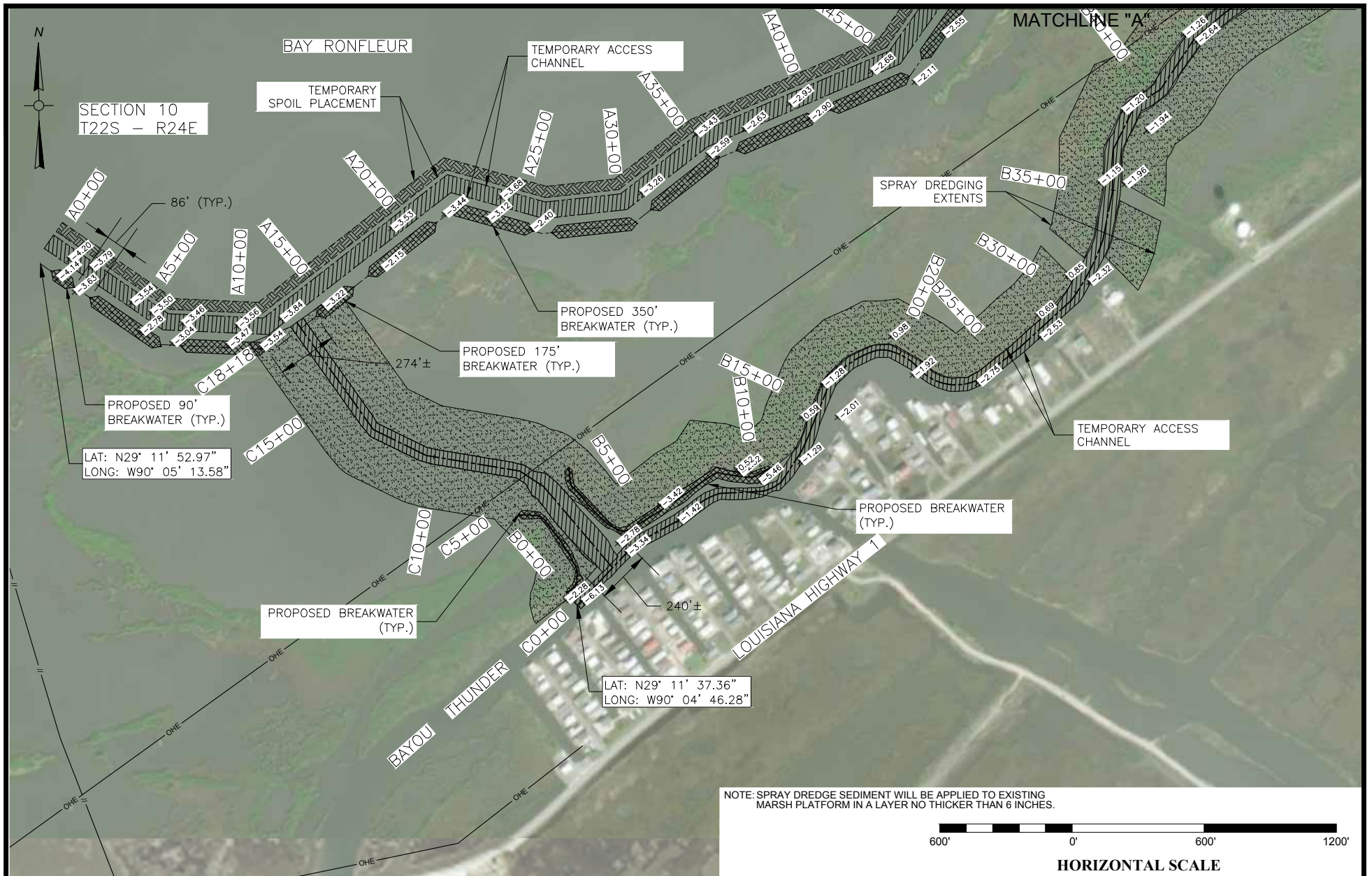
HORIZONTAL SCALE



AIMS Group, Inc.
Consulting Engineers

4421 Zenith Street
Metairie, LA 70001

Ph. 504.887.7045
Fax. 504.887.7088



SECTION 10
T22S - R24E

LAT: N29° 11' 52.97"
LONG: W90° 05' 13.58"

LAT: N29° 11' 37.36"
LONG: W90° 04' 46.28"

LEGEND

- OHE— OVERHEAD POWER LINES
- //— UNDERGROUND GAS LINE
- — — CENTERLINE
- PROPOSED ACCESS CHANNEL
- PROPOSED BREAKWATERS
- PROPOSED SPOIL BANK
- SPRAY DREDGING EXTENTS

DRAWN BY: RMH

PLAN VIEW 1

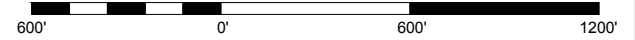
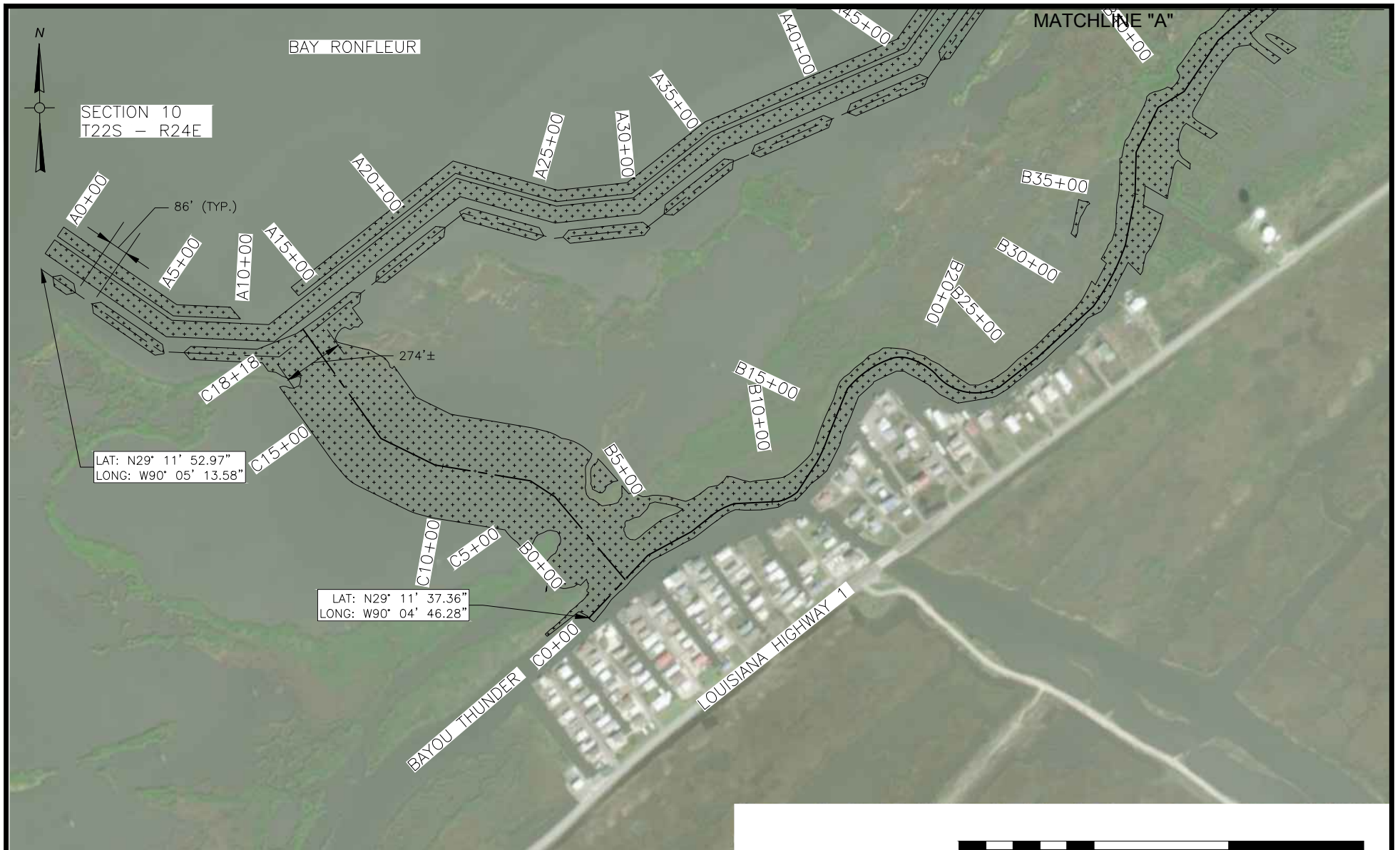
CHENIERE CAMINADA SEGMENTED
BREAKWATER AND BAYOU THUNDER ROCK DIKE
LAFORCHE PARISH AND JEFFERSON PARISH,
LOUISIANA



AIMS Group, Inc.
Consulting Engineers

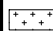
4421 Zenith Street
Metairie, LA 70001

Ph. 504.887.7045
Fax. 504.887.7088



HORIZONTAL SCALE

LEGEND

 TOTAL WATERBOTTOM IMPACT
(106.96 ACRES)

WETLAND AND WATER BOTTOM IMPACTS

CHENIERE CAMINADA SEGMENTED
BREAKWATER AND BAYOU THUNDER ROCK DIKE
LAFOURCHE PARISH AND JEFFERSON PARISH,
LOUISIANA

DRAWN BY: RMH



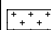
AIMS Group, Inc.
Consulting Engineers

4421 Zenith Street
Metairie, LA 70001

Ph. 504.887.7045
Fax. 504.887.7088



LEGEND

 TOTAL WATERBOTTOM IMPACT
(106.96 ACRES)

WETLAND AND WATER BOTTOM IMPACTS

CHENIERE CAMINADA SEGMENTED
BREAKWATER AND BAYOU THUNDER ROCK DIKE
LAFOURCHE PARISH AND JEFFERSON PARISH,
LOUISIANA

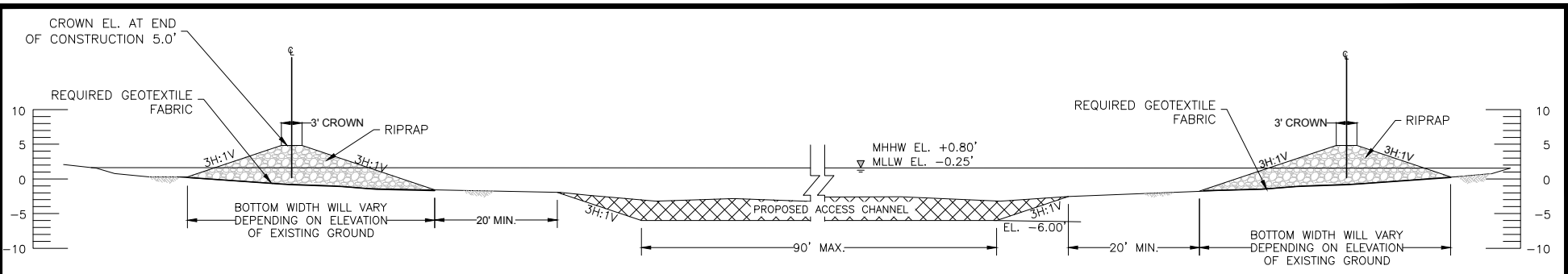
DRAWN BY: RMH



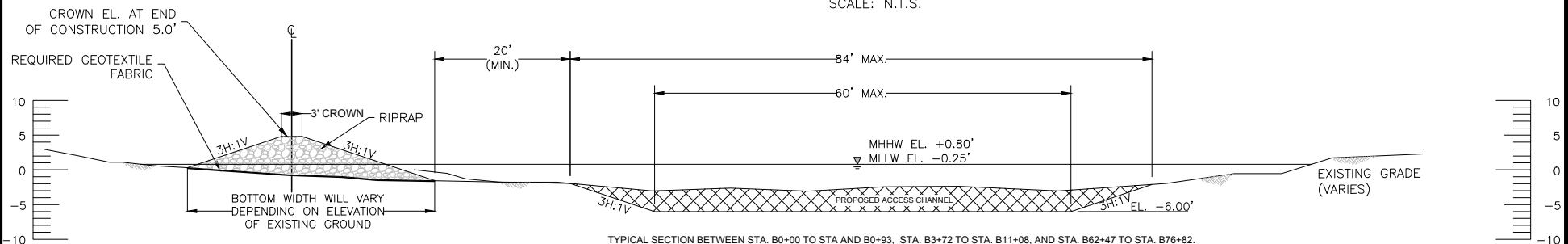
AIMS Group, Inc.
Consulting Engineers

4421 Zenith Street
Metairie, LA 70001

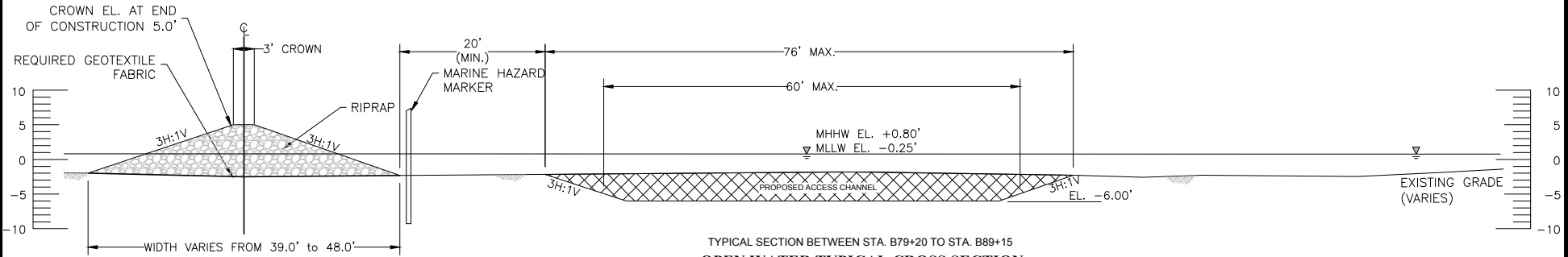
Ph. 504.887.7045
Fax. 504.887.7088



TYPICAL SECTION BETWEEN STA. C0+55 TO STA. C4+77
DYKE ON BOTH BANKS TYPICAL CROSS SECTION
 SCALE: N.T.S.



TYPICAL SECTION BETWEEN STA. B0+00 TO STA. B0+93, STA. B3+72 TO STA. B11+08, AND STA. B62+47 TO STA. B76+82.
SHORELINE TYPICAL CROSS SECTION
 SCALE: N.T.S.



TYPICAL SECTION BETWEEN STA. B79+20 TO STA. B89+15
OPEN WATER TYPICAL CROSS SECTION
 SCALE: N.T.S.

- NOTES:**
1. WATER DEPTH IN THE BAYOU VARIES FROM 5.75 FT. AT M.L.W. TO 6.80 FT. AT M.H.W.
 2. THE BARGES THAT WILL BE USED FOR THE PURPOSE OF LAYING THE ROCKS WILL HAVE A DRAFT DEPTH RANGING BETWEEN 8.0 FT. TO 9.5 FT. WHEN FULLY LOADED. HENCE THE BARGES WILL BE LIGHT LOADED TO MAINTAIN A MINIMUM OF 2FT. CLEARANCE. CARE WILL BE EXERCISED DURING TIDAL INFLUENCES AND CHANGE IN WATER DEPTHS. APPROPRIATE LOADING OF BARGES WILL BE DONE TO HAVE ADEQUATE CLEARANCE DURING TIDAL EVENTS.

BAYOU THUNDER CROSS SECTIONS

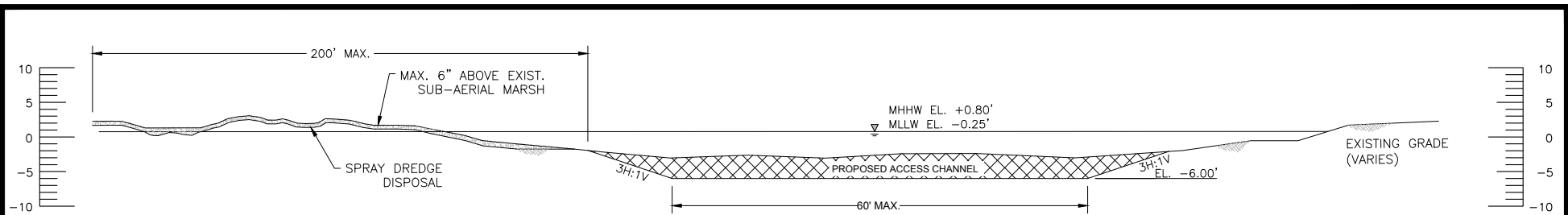
**CHENIERE CAMINADA SEGMENTED
 BREAKWATER AND BAYOU THUNDER ROCK DIKE
 LAFOURCHE PARISH AND JEFFERSON,
 LOUISIANA**

DRAWN BY: RMH



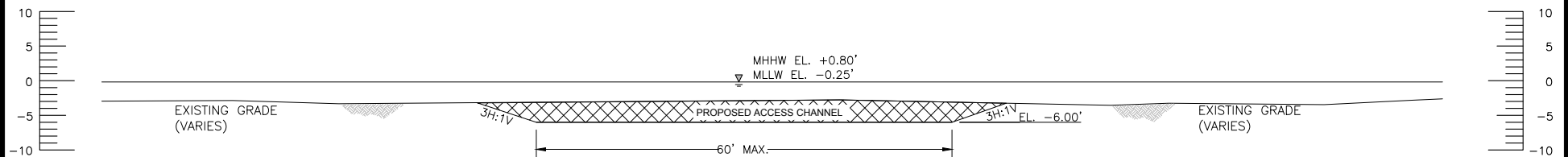
AIMS Group, Inc.
Consulting Engineers
 4421 Zenith Street
 Metairie, LA 70001
 Ph. 504.887.7045
 Fax. 504.887.7088

PROJECT #: A17-029 DATE: 06/06/2019 FIGURE 9



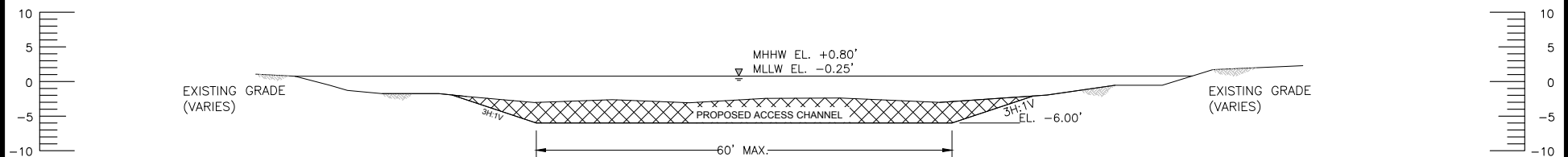
SPRAY DREDGE TYPICAL CROSS SECTION

SCALE: N.T.S.



SHORELINE TYPICAL CROSS SECTION (NO ROCK)

SCALE: N.T.S.



ACCESS CHANNEL TYPICAL CROSS SECTION

SCALE: N.T.S.

NOTES:

1. WATER DEPTH IN THE BAYOU VARIES FROM 5.75 FT. AT M.L.W. TO 6.80 FT. AT M.H.W.
2. THE BARGES THAT WILL BE USED FOR THE PURPOSE OF LAYING THE ROCKS WILL HAVE A DRAFT DEPTH RANGING BETWEEN 8.0 FT. TO 9.5 FT. WHEN FULLY LOADED. HENCE THE BARGES WILL BE LIGHT LOADED TO MAINTAIN A MINIMUM OF 2FT. CLEARANCE. CARE WILL BE EXERCISED DURING TIDAL INFLUENCES AND CHANGE IN WATER DEPTHS. APPROPRIATE LOADING OF BARGES WILL BE DONE TO HAVE ADEQUATE CLEARANCE DURING TIDAL EVENTS.

BAYOU THUNDER CROSS SECTIONS

CHENIERE CAMINADA SEGMENTED
BREAKWATER AND BAYOU THUNDER ROCK DIKE
LAFOURCHE PARISH AND JEFFERSON,
LOUISIANA

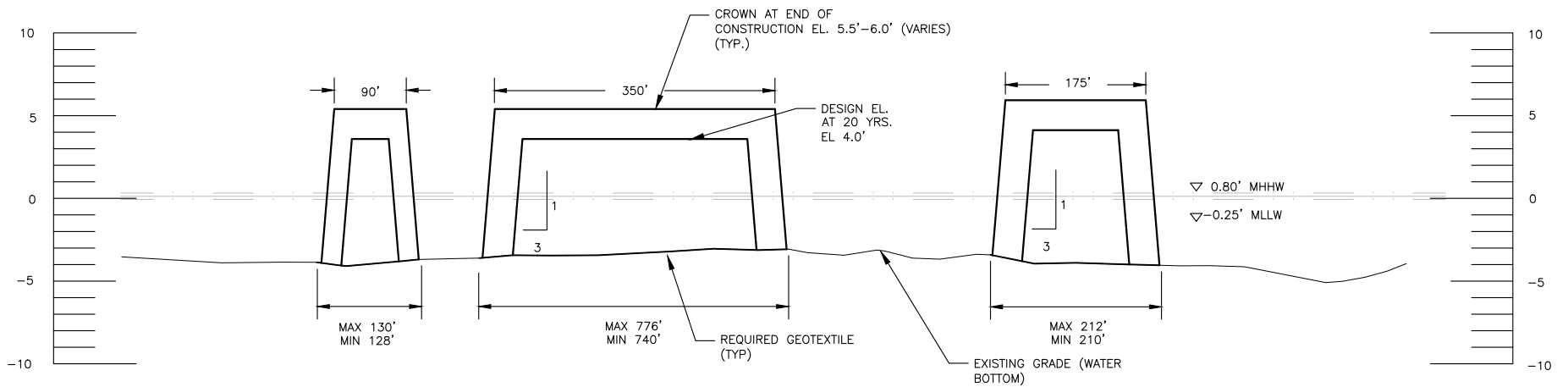
DRAWN BY: RMH



AIMS Group, Inc.
Consulting Engineers

4421 Zenith Street
Metairie, LA 70001

Ph. 504.887.7045
Fax. 504.887.7088



PROJECT FEATURES TYPICAL BREAKWATERS

SCALE: N.T.S.

BAY SIDE BREAKWATER PROFILES

CHENIERE CAMINADA SEGMENTED
BREAKWATER AND BAYOU THUNDER ROCK DIKE
LAFOURCHE PARISH AND JEFFERSON,
LOUISIANA

DRAWN BY: RMH



AIMS Group, Inc.
Consulting Engineers

4421 Zenith Street
Metairie, LA 70001

Ph. 504.887.7045
Fax. 504.887.7088

Material	Quantity
Riprap	201,460 cubic yards
Dredged Material (spoilbank)	92,311 cubic yards
Dredged Material (sprayed)	78,894 cubic yards

QUANTITIES TABLE

CHENIERE CAMINADA SEGMENTED
BREAKWATER AND BAYOU THUNDER ROCK DIKE
LAFOURCHE PARISH AND JEFFERSON,
LOUISIANA

DRAWN BY: RMH



AIMS Group, Inc.
Consulting Engineers

4421 Zenith Street
Metairie, LA 70001

Ph. 504.887.7045
Fax. 504.887.7088