



REPLY TO
ATTENTION OF

DEPARTMENT OF THE ARMY
CORPS OF ENGINEERS, NEW ORLEANS DISTRICT
7400 LEAKE AVENUE
NEW ORLEANS, LOUISIANA 70118

October 23, 2017

Operation Division
Central Evaluation Section

(504) 862-2301
Dirreen.S.Arnold@usace.army.mil
Project Manager
Dirreen Arnold
Permit Application Number
MVN-2017-01253 CA

PUBLIC NOTICE

Interested parties are hereby notified that a permit application has been received by the New Orleans District of the US Army Corps of Engineers pursuant to: [X] Section 10 of the Rivers and Harbors Act of March 3, 1899 (30 Stat. 1151; 33 USC 403).

BOAT SHED INSTALLATION, FOUR POINT BAYOU TERREBONNE PARISH

NAME OF APPLICANT: KIM HEBERT, 213 Wilson Avenue, Houma, Louisiana 70364

LOCATION OF WORK: Four Point Bayou, right descending bank, located in Section 27, Township 20 South, Range 17 East, at 1093 Four Point Road, Dulac, Louisiana, (29.311327, -90.714300), in Terrebonne Parish, as shown on the enclosed drawings, within Hydrologic Unit Code 08090302, West Central Louisiana Coastal.

CHARACTER OF WORK: The applicant has requested Department of the Army authorization to drive sixteen (16) timber piles in Four Point Bayou in order to install and maintain a 45' 6" long by 25' wide boat shed with hoist, all for recreational purposes. No dredging or fill is required. The structure will extend approximately 45' 6" channelward where Four Point Bayou's width is approximately 125 feet wide. No special aquatic sites will be affected by this project and no mitigation is anticipated.

It is presumed that the applicant has designed the project to avoid and minimize direct and secondary adverse impacts to the maximum extent practicable.

The comment period for the Department of the Army Permit will close **15 days** from the date of this public notice. Written comments, including suggestions for modifications or objections to the proposed work, stating reasons thereof, are being solicited from anyone having interest in this permit must be mailed so as to be received

before or by the last day of the comment period. Letters concerning the Corps of Engineers permit application must reference the applicant's name and the Permit Application Number, and be mailed to the Corps of Engineers at the address above, **ATTENTION: REGULATORY BRANCH**. Individuals or parties may request an extension of time in which to comment on the proposed work by writing or e-mailing the Corps of Engineers Project Manager listed above. Any request must be specific and substantively supportive of the requested extension, and received by this office prior to the end of the initial comment period. The Section Chief will review the request and the requestor will be promptly notified of the decision to grant or deny the request. If granted, the time extension will be continuous to the initial comment period and, inclusive of the initial comment period, will not exceed a total of 30 calendar days.

Corps of Engineers Permit Criteria

The decision whether to issue a permit will be based on an evaluation of the probable impacts, including cumulative impacts of the proposed activity on the public interest. That decision will reflect the national concern for both protection and utilization of important resources. The benefit which reasonably may be expected to accrue from the proposal must be balanced against its reasonably foreseeable detriments. All factors which may be relevant to the proposal will be considered including the cumulative effects thereof; among those are conservation, economics, aesthetics, general environmental concerns, wetlands, historic properties, fish and wildlife values, flood hazards, floodplain values, land use, navigation, shoreline erosion and accretion, recreation, water supply and conservation, water quality, energy needs, safety, food and fiber production, mineral needs, considerations of property ownership and, in general, the needs and welfare of the people.

The U.S. Army Corps of Engineers is soliciting comments from the public, federal, state, and local agencies and officials, Indian Tribes, and other interested parties in order to consider and evaluate the impacts of this proposed activity. Any comments received will be considered by the U.S. Army Corps of Engineers to determine whether to make, modify, condition, or deny a permit for this proposal. To make this decision, comments are used to assess impacts on endangered species, historic properties, water quality, general environmental effects, and other public interest factors listed above. Comments are used in the preparation of an Environmental Assessment and/or an Environmental Impact Statement pursuant to the National Environmental Policy Act. Comments are also used to determine the need for a public hearing and to determine the overall public interest of the proposed activity.

The New Orleans District is unaware of properties listed on the National Register of Historic Places near the proposed work. The possibility exists that the proposed work may damage or destroy presently unknown archeological, scientific, pre-historical, historical sites, or data. Issuance of this public notice solicits input from the State Archeologist and State Historic Preservation Officer regarding potential impacts to cultural resources.

The New Orleans District has determined that the proposed project is located within waters known to be occupied by the endangered West Indian Manatee (*Trichechus manatus*) and determined with the inclusion of the Standard Manatee Conditions for In-Water Activities the proposed activity is not likely to adversely affect the species based on the Standard Local Operating Procedure for Endangered Species in Louisiana (SLOPES), dated October 22, 2014, between the U.S. Army Corps of Engineers, New Orleans and U.S. Fish and Wildlife Service, Ecological Services Office.

This notice initiates the Essential Fish Habitat (EFH) consultation requirements of the Magnuson-Stevens Fishery Conservation and Management Act. The applicant's proposal may result in the destruction or alteration of N/A acres of EFH utilized by various life stages of red drum and penaeid shrimp. Our initial determination is that the proposed action would not have a substantial adverse impact on EFH or federally managed fisheries in the Gulf of Mexico. Our final determination relative to project impacts and the need for mitigation measures is subject to review by and coordination with the National Marine Fisheries Service.

If the proposed work involves deposits of dredged or fill material into navigable waters, the evaluation of the probable impacts will include the application of guidelines established by the Administrator of the Environmental Protection Agency. Also, a certification that the proposed activity will not violate applicable water quality standards will be required from the Department of Environmental Quality, before a permit is issued.

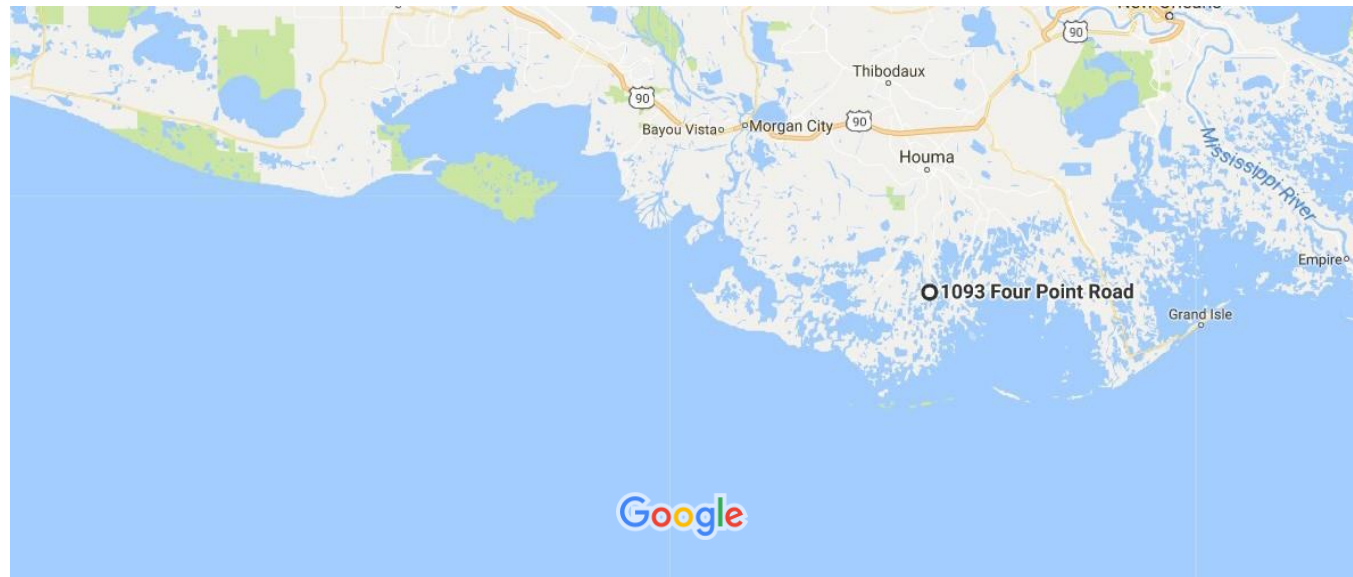
Any person may request, in writing, within the comment period specified in this notice, that a public hearing be held to consider this application. Requests for public hearings shall state, with particularity, the reasons for holding a public hearing.

The applicant has certified that the proposed activity described in the application complies with and will be conducted in a manner that is consistent with the Louisiana Coastal Resources Program. The Department of the Army permit will not be issued unless the applicant received approval or a waiver of the Coastal Use Permit by the Department of Natural Resources.

You are requested to communicate the information contained in this notice to any other parties whom you deem likely to have interest in the matter.

JOHN M. HERMAN
Chief, Central Evaluation Section
Regulatory Branch

Enclosure



Google Maps

1093 Four Point Rd



O

Google

Map data ©2017 Google, INEGI

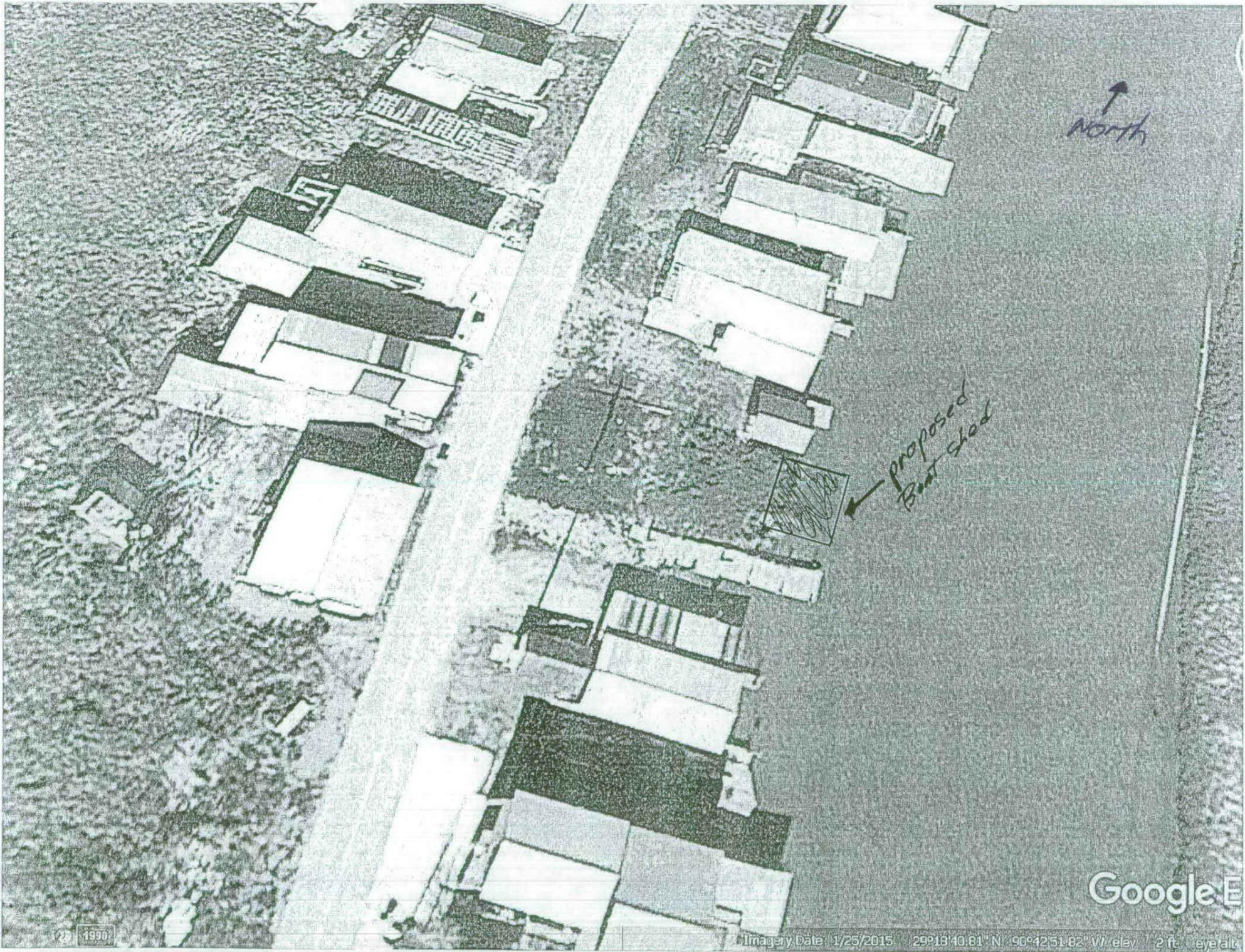
200 ft..._____



Four Point Rd

A70353





North

Proposed Boat shed

Google E

1996

Imagery Date: 1/25/2015 29°18'40.81" N 90°42'51.82" W elev: 2 ft eye alt

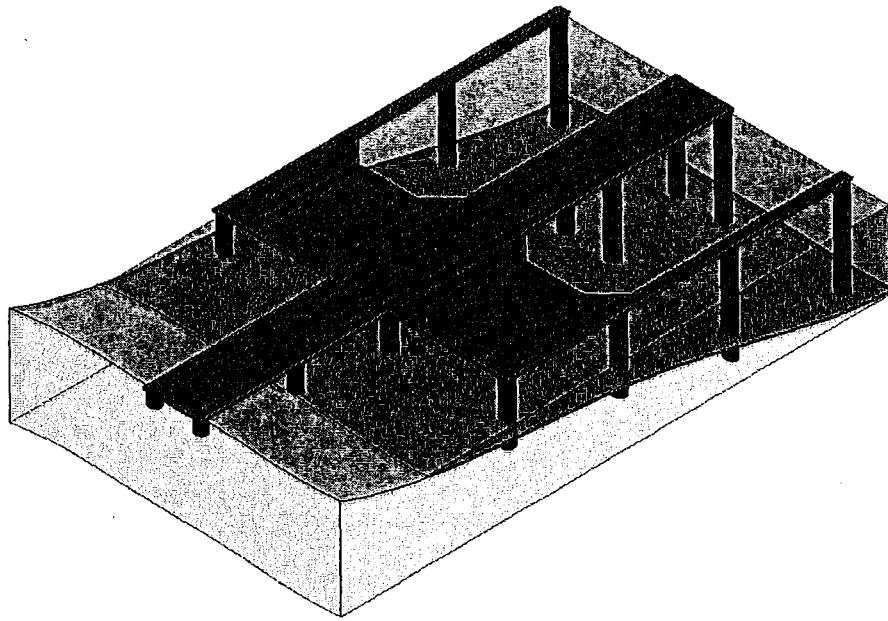
2

1

← North

B

B



FOUR POINTS WATERWAY:
1094 FOUR POINTS RD.
DULAC, LA 70353

REV 1

REV 2

REV 3

REV 4

REV 5

ADAM

THE INFORMATION CONTAINED IN THIS DRAWING IS THE SOLE PROPERTY OF ADAMAX CAD, LLC. ANY REPRODUCTION IN PART OR AS A WHOLE WITHOUT THE WRITTEN PERMISSION OF ADAMAX CAD, LLC. IS PROHIBITED.

REVISION LOG UNLESS OTHERWISE SPECIFIED:		NAME	DATE
REV 1			
REV 2			
REV 3	THREE PLACE DECIMAL ± 0.005		
REV 4			
REV 5			

DIMENSIONS ARE IN INCHES		TOLERANCES:		FRACTIONAL ± 1/8"		ANGULAR: MACH ± 1/2° (30°)		TWO PLACE DECIMAL ± 0.010" EN		INTERPRET GEOMETRIC	
MATERIAL		FINISH		SCALE 1:128		PARTS SHALL BE MADE TO THE FOLLOWING SPECIFICATIONS:		BREAK EDGES: 0.005" X 45° MAX		FILLETS: R0.010" MAX	
PROPRIETARY AND CONFIDENTIAL		WOOD				SURFACE: 64 RMS MIN					

DAMAX CAD, LLC

PROPOSED

BOATSHED - FOUR POINTS WATERWAY

SIZE DWG. NO. **A** Boathouse Layout

REV **0**

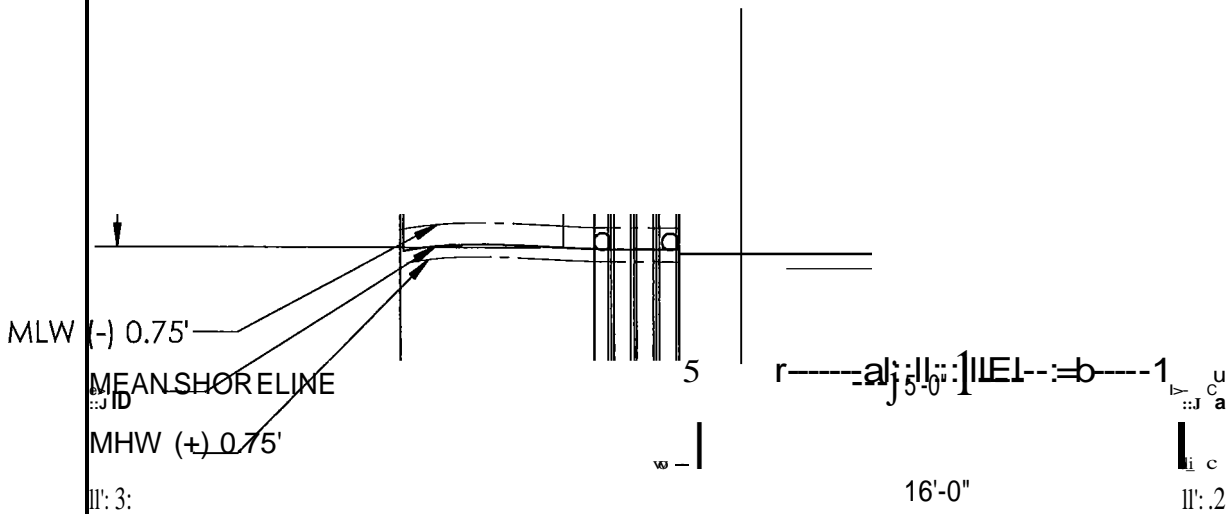
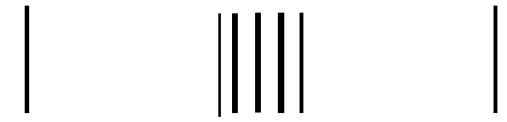
WEIGHT: SEE CUT SHEETS LBS

SHEET 1 OF 5

2

1

MLW (-) 0.75'
 MEAN SHORELINE
 MHW (+) 0.75'



FOUR POINTS WATER WAY:
 1094 FOUR POINTS R.D.
 DULAC, LA 70353

A

A

ADAMAX

THE INFORMATION CONTAINED IN THIS DRAWING IS THE SOLE PROPERTY OF ADAMAX CAD, LLC. ANY REPRODUCTION IN PART OR AS A WHOLE WITHOUT THE WRITTEN PERMISSION OF ADAMAX CAD, LLC IS PROHIBITED.

REVISION LOG	DATE	BY	DESCRIPTION
REV 1	8/19/17	DJH	1/2" 13CYJ
REV 2			
REV 3			
REV 4			
REV 5			

MATERIAL: WOOD
 FINISH: 9.A
 COMMENTS: PARTS SHALL HAVE NO BURRS
 BREAK EDGES: 0.005" X 45° MAX
 FILLETS: R0.010" MAX
 SURFACE: 64 RMS MIN

PROPRIETARY AND CONFIDENTIAL
 SCALE 1:128

Bül

ADAMAX CAD, LLC

**PROPOSED
 BOATHED- FOUR
 POINTS WATER WAY**

SIZE - bwG. NO. --- | - REV--

A Boathouse *lavo*

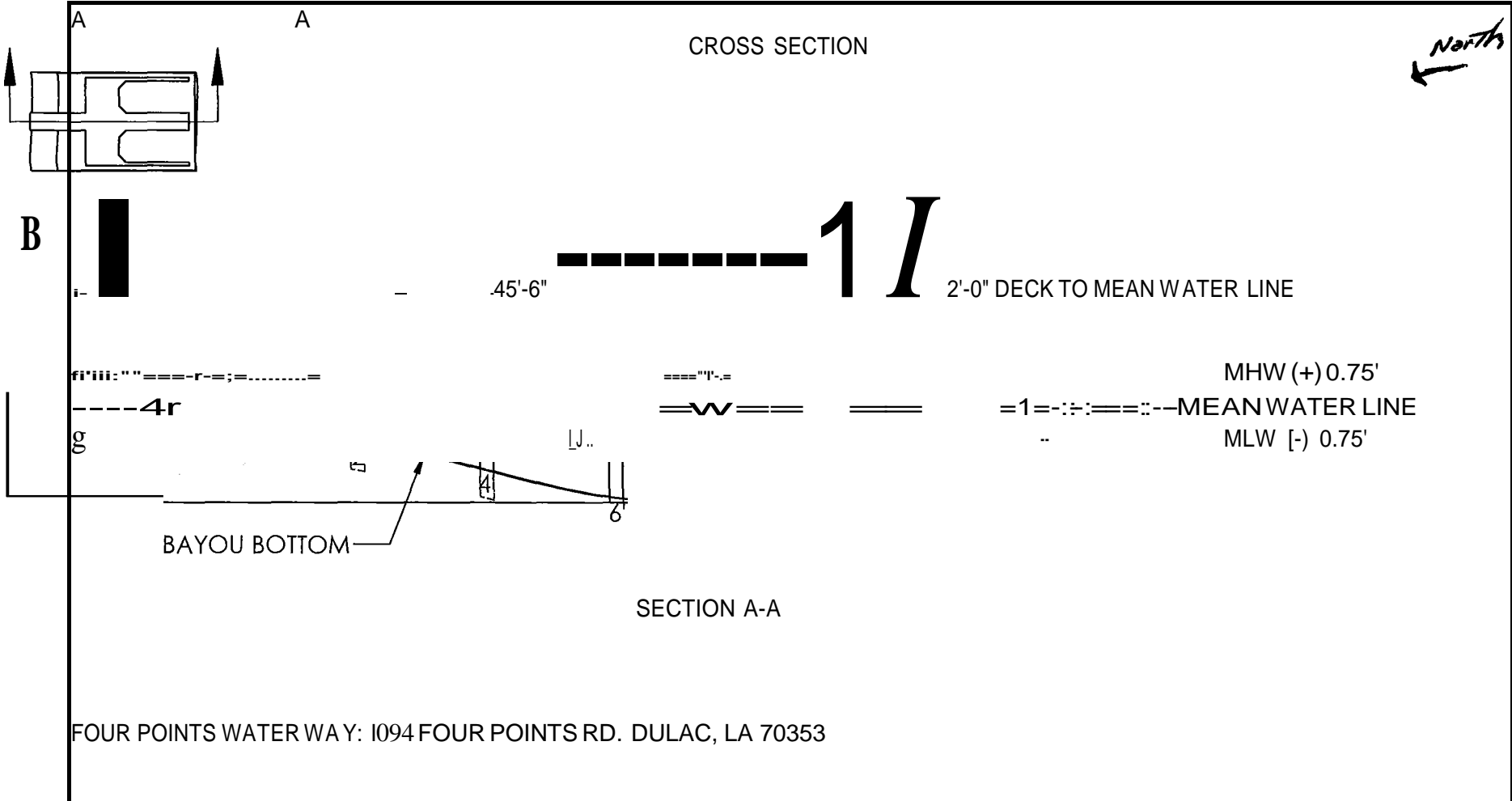
WEIGHT: SEE UT SHEETS LBS SHEET 2 OF 5

2

1

2

1



FOUR POINTS WATER WAY: 1094 FOUR POINTS RD. DULAC, LA 70353

A

ADAMAX

A

- REV 3 THE INFORMATION CONTAINED IN THIS DRAWING IS THE SOLE PROPERTY OF ADAMAX CAD, LLC. ANY REPRODUCTION IN PART OR AS A WHOLE WITHOUT THE WRITTEN PERMISSION OF ADAMAX CAD, LLC IS PROHIBITED.
- REV 4
- REV 5

METRIC
PER: ANSI

Q.A.

OOD

COMMENTS:

PARTS SHALL HAVE NO BURRS
 BREAK EDGES: 0.005" X 45° MAX
 FILLETS: R0.010" MAX
 SURFACE: 64 RMS MIN

stfE-OWC;-No:-REV

A

Boathouse Layout | Q

WEIGHT: SEE UTSHEETS LBS

SHEET 3 OF 5

2

1

2

1

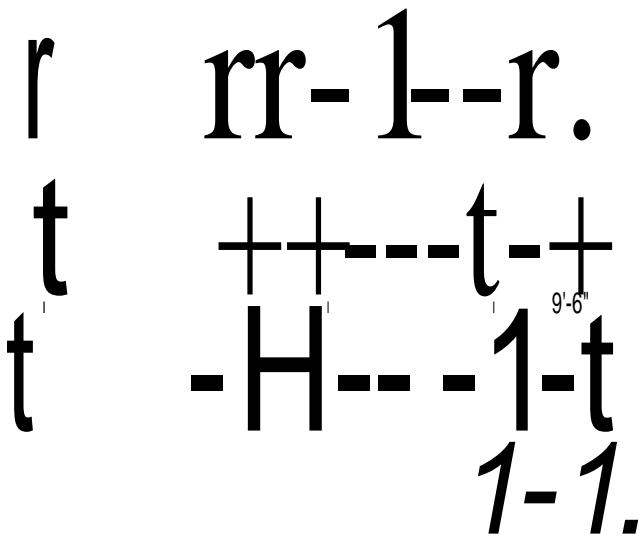
North. ←

PILE LAYOUT

B

B

L 1J



MEAN SHORELINE

-j4'-0"f--

FOUR POINTS WATER WAY:
1094 FOUR POINTS RD.
DULAC, LA 70353

A

A

ADAMAX

THE INFORMATION CONTAINED IN THIS DRAWING IS THE SOLE PROPERTY OF ADAMAX CAD, LLC. ANY REPRODUCTION IN PART OR AS A WHOLE WITHOUT THE WRITTEN PERMISSION OF

REV 0	REV 1s 1 Nb G	REV 1	REV 2	REV 3	REV 4	REV 5

ADAMAX CAD, LLC
 TITLE: PROPOSED BOATSHED- FOUR POINTS WATERWAY
 DWG. NO. Boathouse Layout
 CHECKED: DJH 8/19/17
 PARTS SHALL HAVE NO BURRS 0.005" X 45' MAX
 BREAK EDGES: R0.010" MAX
 FILLETS: 64 RMS MIN
 FINISH: WOOD
 SURFACE: 1:128

ADAMAX CAD, LLC
 TITLE: PROPOSED BOATSHED- FOUR POINTS WATERWAY
 DWG. NO. Boathouse Layout
 REV Q

PROHIBITED PROPRIETARY AND CONFIDENTIAL

WEIGHT: SEE UT SHEETS LBS SHEET 4 OF 5

2

1

Notes to be added to permit plats

1. As-built drawings will be submitted within 30 days of completion of this project to the Louisiana Department of Natural Resources, Office of Conservation, Pipeline Division, P. O. Box 94275 Baton Rouge, LA 70804, and to the Louisiana Department of Natural Resources, Coastal Management Division, P.O. Box 44487, Baton Rouge, LA 70804-4487.
2. All structures, facilities, well and pipelines/flowlines occurring in open water areas or in oilfield canals or slips shall be removed within 120 days of abandonment or the facilities for the herein permitted use unless prior written approval to leave such structures in place is received from the Coastal Management Division. This condition does not preclude the necessity for revising the current permit or obtaining a separate Coastal Use Permit, should one be required.
3. Structures must also be marked/lighted in accordance with U. S. Coast Guard regulations.
4. In order to ensure the safety of all parties, the permittee shall contact the Louisiana One Call System (1-800-272-3020) a minimum of 48 hours prior to the commencement of any excavation (digging, dredging, jetting, etc.) or demolition activity.