

JOINT PUBLIC NOTICE

October 29, 2018

United States Army Corps of Engineers
New Orleans District
Regulatory Branch
7400 Leake Avenue
New Orleans, Louisiana 70118

State of Louisiana
Department of Environmental Quality
Water Permits Division
Post Office Box 4313
Baton Rouge, Louisiana 70821-4313

(504) 862-2675
Project Manager
Jamie Crowe
Jamie.M.Crowe@usace.army.mil
Permit Application Number
MVN 2017-00940 CO

(225) 219-3225
Project Manager
Elizabeth Hill

WQC Application Number
WQC 181025-02

Interested parties are hereby notified that a permit application has been received by the New Orleans District of the U.S. Army Corps of Engineers pursuant to:
[] Section 10 of the Rivers and Harbors Act of March 3, 1899 (30 Stat. 1151; 33 USC 403); and/or [X] Section 404 of the Clean Water Act (86 Stat. 816; 33 USC 1344).

Application has also been made to the Louisiana Department of Environmental Quality, Office of Environmental Services, for a Water Quality Certification (WQC) in accordance with statutory authority contained in LRS30:2047 A(3), and provisions of Section 401 of the Clean Water Act (P.L.95-17).

PROPOSED MIDDLE SCHOOL IN ASCENSION PARISH

NAME OF APPLICANT: Ascension Parish School Board, c/o Evans-Graves Engineers, Inc., 1 Galleria Boulevard, Suite 1520, Metairie, Louisiana 70001.

LOCATION OF WORK: Within the Lake Pontchartrain Basin, in the Amite River hydrologic unit (HUC 08070202), located at 15464 Bluff Road, Prairieville, LA 70769, in Ascension Parish.

CHARACTER OF WORK: The applicant has requested authorization to excavate and area, as well as clear, grade, and fill a 19.4-acre tract to allow for construction of a middle school, gymnasium, football field, and appurtenant detention ponds, access road, and sewer treatment plant. Approximately, 1,101 cubic yards of material will be excavated from wetlands and distributed on site. An additional, 3,079 cubic yards of fill material will be hauled in and placed in wetlands. Approximately 2.5 acres of wetlands and 830 linear feet of jurisdictional waters will be impacted by construction.

According to the applicant, the wetlands cannot be avoided due to the logistical and schematic limitations of the land parcel's boundaries. Additionally, silt fencing will be

utilized along the entire perimeter of the project site during construction to control stormwater run-off from the project site. As compensation for unavoidable wetland impacts the applicant proposes to purchase wetland credits from a Corps approved mitigation bank located in the watershed.

The comment period for the Department of the Army Permit and the Louisiana Department of Environmental Quality WQC will close **20 days** from the date of this joint public notice. Written comments, including suggestions for modifications or objections to the proposed work, stating reasons thereof, are being solicited from anyone having interest in this permit and/or this WQC request and must be mailed, so as to be received before or by the last day of the comment period. Letters concerning the Corps of Engineers permit application must reference the applicant's name and the Permit Application Number, and be mailed to the Corps of Engineers at the address above, **ATTENTION: REGULATORY BRANCH**. The application for this proposed project is on file with the Louisiana Department of Environmental Quality and may be examined weekdays between 8:00 a.m. and 4:30 p.m. Copies may be obtained upon payment of costs of reproduction. Individuals or parties may request an extension of time in which to comment on the proposed work by writing or e-mailing the Corps of Engineers Project Manager listed above. Any request must be specific and substantively supportive of the requested extension, and received by this office prior to the end of the initial comment period. The Section Chief will review the request and the requestor will be promptly notified of the decision to grant or deny the request. If granted, the time extension will be continuous to the initial comment period and, inclusive of the initial comment period, will not exceed a total of 30 calendar days. Letters concerning the Water Quality Certification must reference the applicant's name and the WQC Application number and be mailed to the Louisiana Department of Environmental Quality at the address above.

Corps of Engineers Permit Criteria

The decision whether to issue a permit will be based on an evaluation of the probable impacts, including cumulative impacts of the proposed activity on the public interest. That decision will reflect the national concern for both protection and utilization of important resources. The benefit which reasonably may be expected to accrue from the proposal must be balanced against its reasonably foreseeable detriments. All factors which may be relevant to the proposal will be considered including the cumulative effects thereof; among those are conservation, economics, aesthetics, general environmental concerns, wetlands, historic properties, fish and wildlife values, flood hazards, floodplain values, land use, navigation, shoreline erosion and accretion, recreation, water supply and conservation, water quality, energy needs, safety, food and fiber production, mineral needs, considerations of property ownership and, in general, the needs and welfare of the people.

The U.S. Army Corps of Engineers is soliciting comments from the public, federal, state, and local agencies and officials, Indian Tribes, and other interested parties in

order to consider and evaluate the impacts of this proposed activity. Any comments received will be considered by the U.S. Army Corps of Engineers to determine whether to make, modify, condition, or deny a permit for this proposal. To make this decision, comments are used to assess impacts on endangered species, historic properties, water quality, general environmental effects, and other public interest factors listed above. Comments are used in the preparation of an Environmental Assessment and/or an Environmental Impact Statement pursuant to the National Environmental Policy Act. Comments are also used to determine the need for a public hearing and to determine the overall public interest of the proposed activity.

The New Orleans District is unaware of properties listed on the National Register of Historic Places near the proposed work. The possibility exists that the proposed work may damage or destroy presently unknown archeological, scientific, prehistorical, historical sites, or data. Copies of this notice are being sent to the State Archeologist and State Historic Preservation Officer.

Our initial finding is that the proposed work would not affect any species, nor affect any habitat designated as critical to the survival and recovery of such species, listed as endangered by the U.S. Department of Commerce.

The project was determined to have no effect on any known endangered species. These determinations are based on Standard Local Operating Procedures for Endangered Species in Louisiana (SLOPES) dated October 22, 2014, between the US Army Corps of Engineers, New Orleans District and US Fish and Wildlife Service, Ecological Services Office.

This notice initiates the Essential Fish Habitat (EFH) consultation requirements of the Magnuson-Stevens Fishery Conservation and Management Act. The applicant's proposal would result in the destruction or alteration of n/a acres of EFH utilized by various life stages of red drum and penaeid shrimp. Our initial determination is that the proposed action would not have a substantial adverse impact on EFH or federally managed fisheries in the Gulf of Mexico. Our final determination relative to project impacts and the need for mitigation measures is subject to review by and coordination with the National Marine Fisheries Service.

If the proposed work involves deposits of dredged or fill material into navigable waters, the evaluation of the probable impacts will include the application of guidelines established by the Administrator of the Environmental Protection Agency. Also, a certification that the proposed activity will not violate applicable water quality standards will be required from the Department of Environmental Quality, Office of Environmental Services, before a permit is issued.

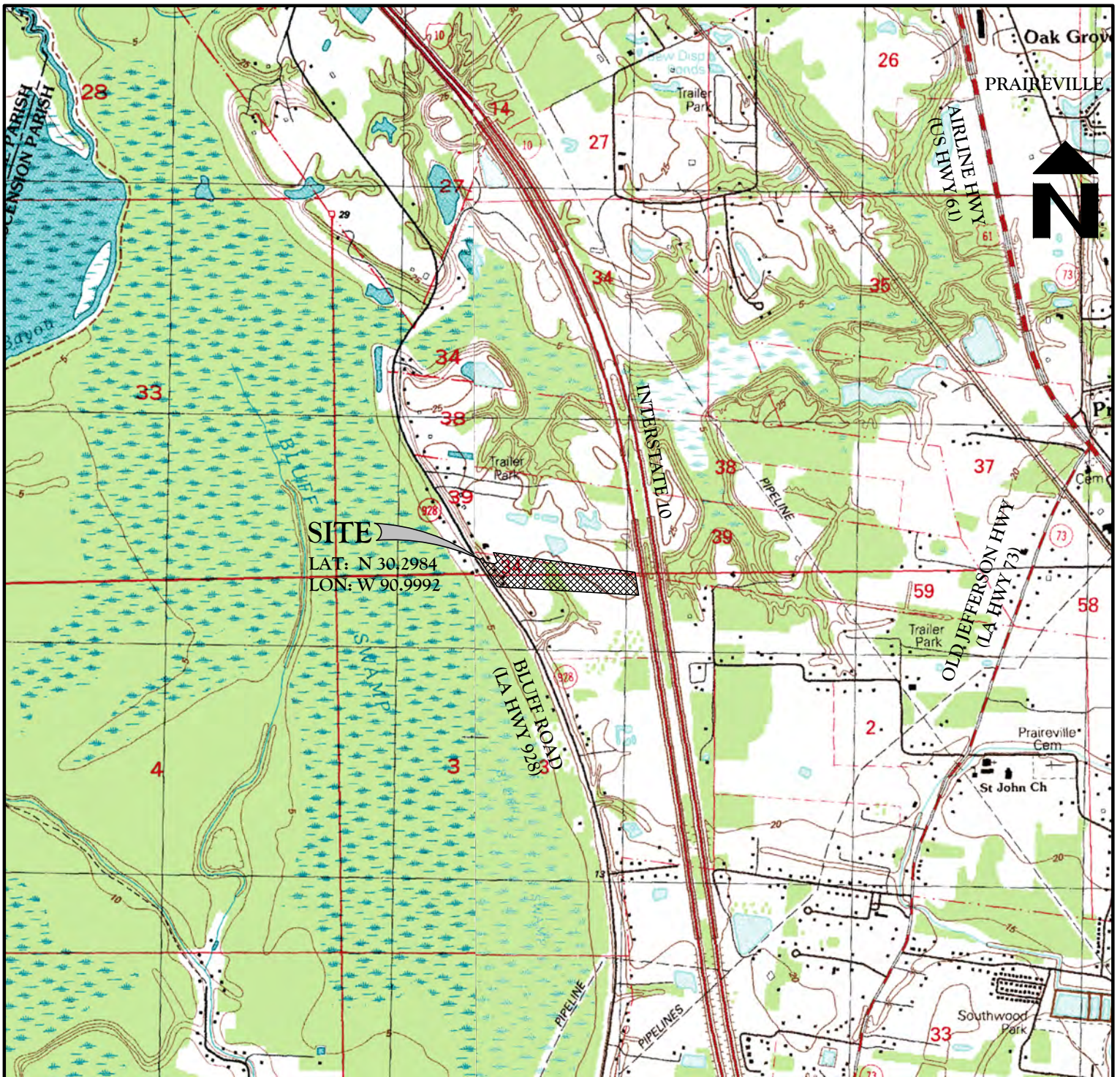
Any person may request, in writing, within the comment period specified in this notice, that a public hearing be held to consider this application. Requests for public hearings shall state, with particularity, the reasons for holding a public hearing. You are requested to communicate the information contained in this notice to any other parties

whom you deem likely to have interest in the matter.

You are requested to communicate the information contained in this notice to any other parties whom you deem likely to have interest in the matter.

John M. Herman
Chief, Central Evaluation Section
Regulatory Branch

Enclosure



2000 0 2000 4000



SCALE: 1"=2000'

QUALITY
 Engineering & Surveying, LLC

18320 Hwy 42 Port Vincent, LA 70726
 225.698.1800 | www.qesla.com | info@qesla.com



Title:

VICINITY MAP

Project:

ASCENSION MIDDLE SCHOOL
 15464 BLUFF RD.
 ASCENSION PARISH, LOUISIANA

DWG Path: P:\2017 Projects\17-232 Ascension Middle School\Drawings\Engineering\Exhibits\Wellnods\Current Drawings\17232_01_VICINITY.dwg

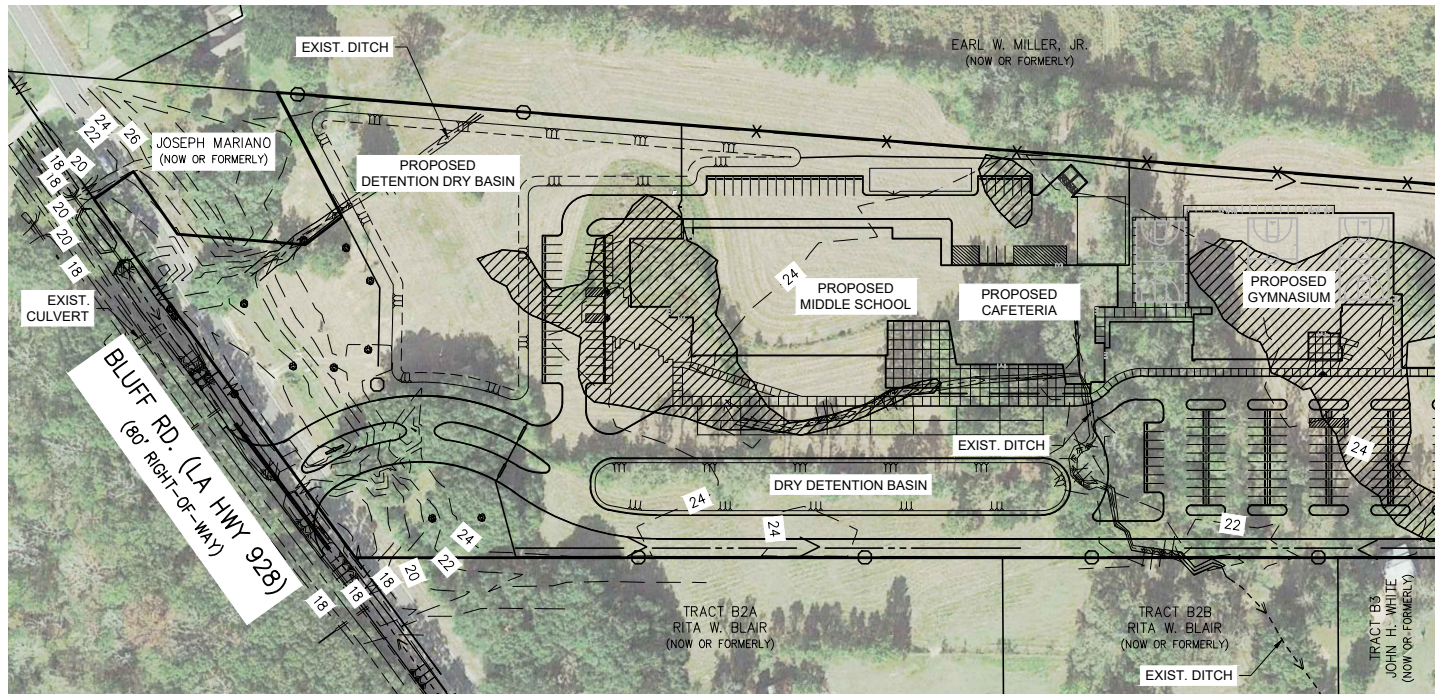
Drawn By:

SDG

Date: FEBRUARY 2018

Sheet:

1 of 13



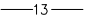


MATCH LINE (SEE SHEET 2B OF 13)

FILL MATERIALS TO BE PLACED IN WETLANDS	
1661 CY.	EARTHEN (NATIVE)
564 CY.	ROADWAY BASE
424 CY.	6" CONCRETE
334 CY.	5" CONCRETE
96 CY.	4" CONCRETE
3079 CY.	TOTAL
EXCAVATION TO OCCUR WITHIN WETLANDS (MATERIAL TO BE PLACED ON-SITE)	
1101 CY.	EARTHEN (NATIVE)



SCALE: 1"=200'

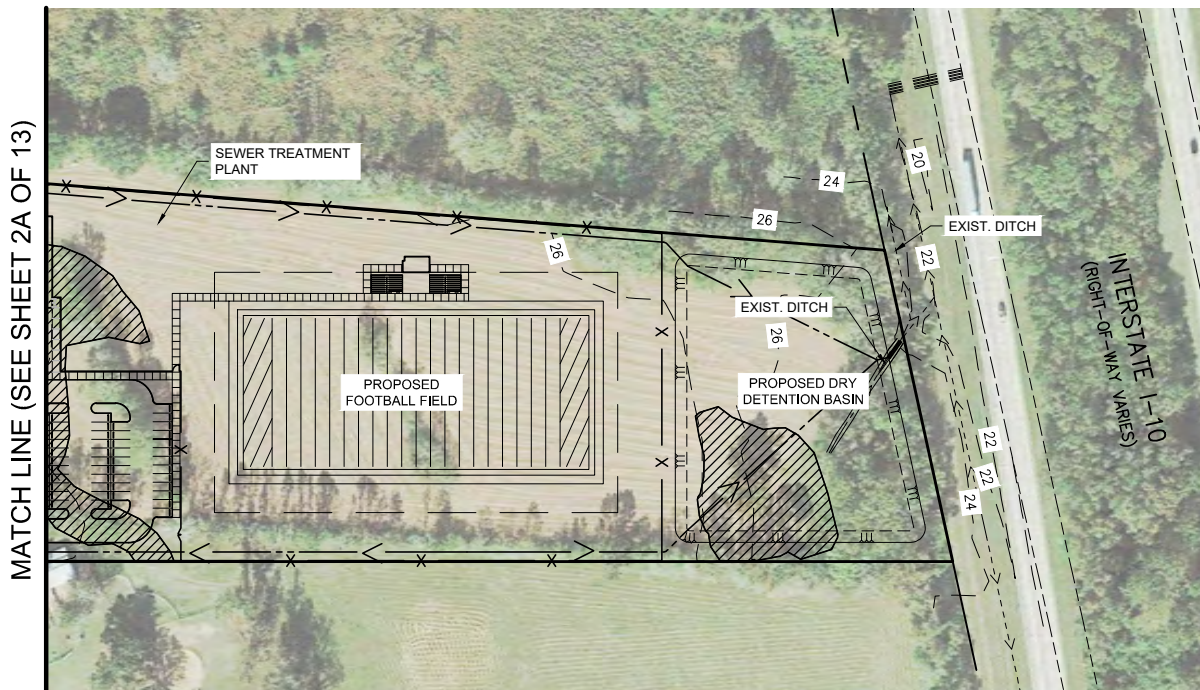
LEGEND	
	DENOTES AREAS WITHIN 100 YR. FLOOD PLAIN (NONE) AS PER FEMA FIRM
	DENOTES AREAS WITHIN WETLANDS (TOTAL ±2.39 AC.) PER MVN 2007-3478-SQ TO BE PERMITTED (MITIGATED)
	EXIST. CONTOUR





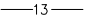

18320 Hwy 42 Port Vincent, LA 70726
225.698.1600 | www.qesia.com | info@qesia.com

Title:	SITE LAYOUT WITH AERIAL		
Project:	ASCENSION MIDDLE SCHOOL 15464 BLUFF RD. ASCENSION PARISH, LOUISIANA		
Drawn By:	SDG	Date:	FEBRURARY 2018
Sheet:	2A of 13		

DWG Path: P:\2017 Projects\17-232 Ascension Middle School\Drawings\Engineering\Exhibits\Wetlands\Current Drawings\17232_02_S1.dwg



SCALE: 1"=200'

LEGEND	
	DENOTES AREAS WITHIN 100 YR. FLOOD PLAIN (NONE) AS PER FEMA FIRM
	DENOTES AREAS WITHIN WETLANDS (TOTAL ±2.39 AC.) PER MVN 2007-3478-SQ TO BE PERMITTED (MITIGATED)
	EXIST. CONTOUR

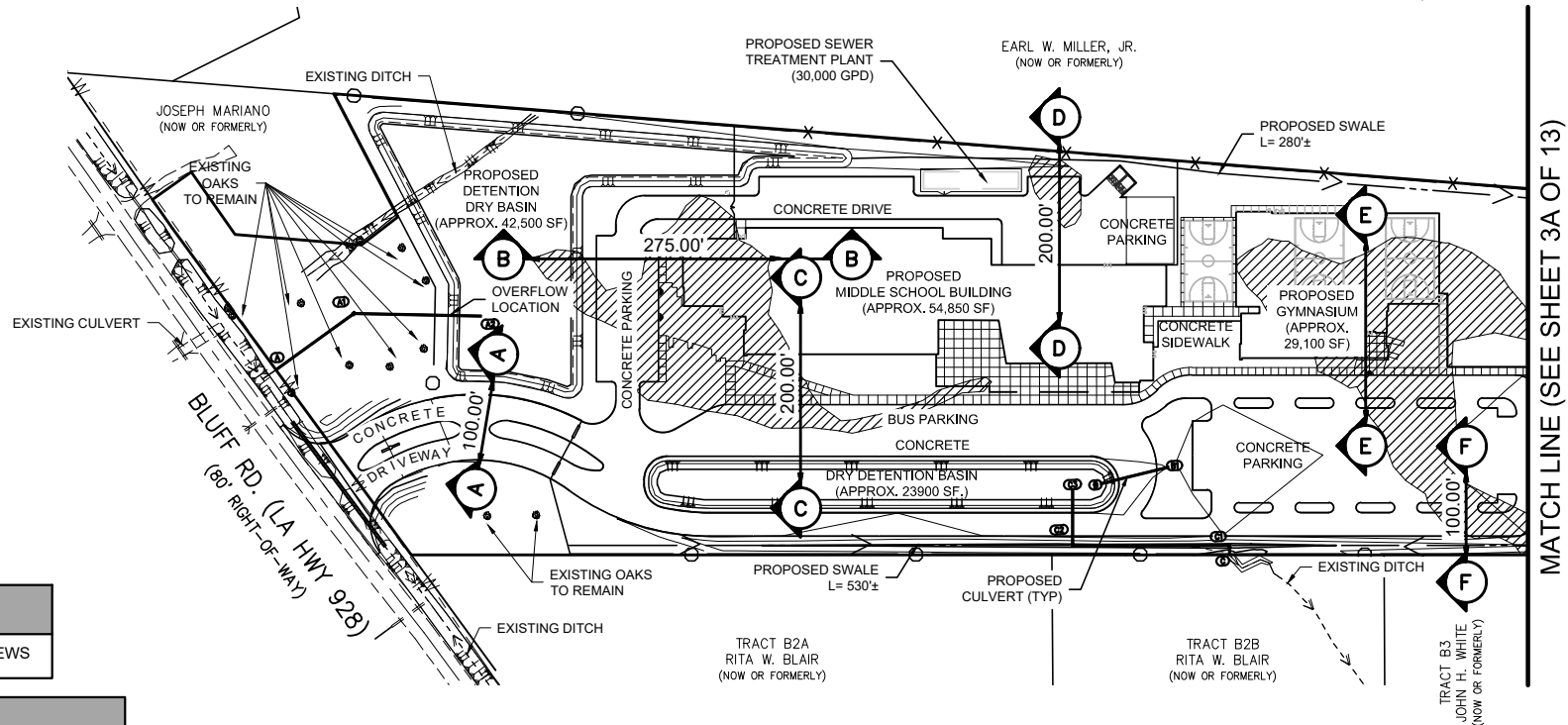
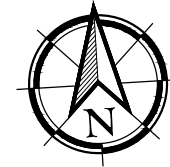



18320 Hwy 42 Port Vincent, LA 70726
225.698.1600 | www.qesia.com | info@qesia.com

Title:	SITE LAYOUT WITH AERIAL		
Project:	ASCENSION MIDDLE SCHOOL 15464 BLUFF RD. ASCENSION PARISH, LOUISIANA		
DWG Path:	Drawn By:	Date:	Sheet:

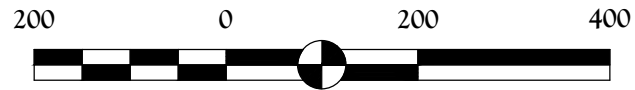
DWG Path: P:\2017 Projects\17-232 Ascension Middle School\Drawings\Engineering\Exhibits\Wetlands\Current Drawings\17232_02_S1.dwg

Drawn By: **SDG** Date: **FEBRURARY 2018** Sheet: **2B of 13**



NOTE
SEE SHEETS 4-9 FOR SECTIONS VIEWS

PIPE SUMMARY				
FROM	TO	LENGTH (FT.)	SIZE (IN.)	TYPE
A	A1	99'	24"	PVC
A1	A2	132'	24"	PVC
B1	B	84'	24"	RCP
C1	C	7'	24"	RCP
C2	C1	162'	24"	RCP
C3	C2	63'	24"	RCP
D	D1	21'	24"	RCP



SCALE: 1"=200'

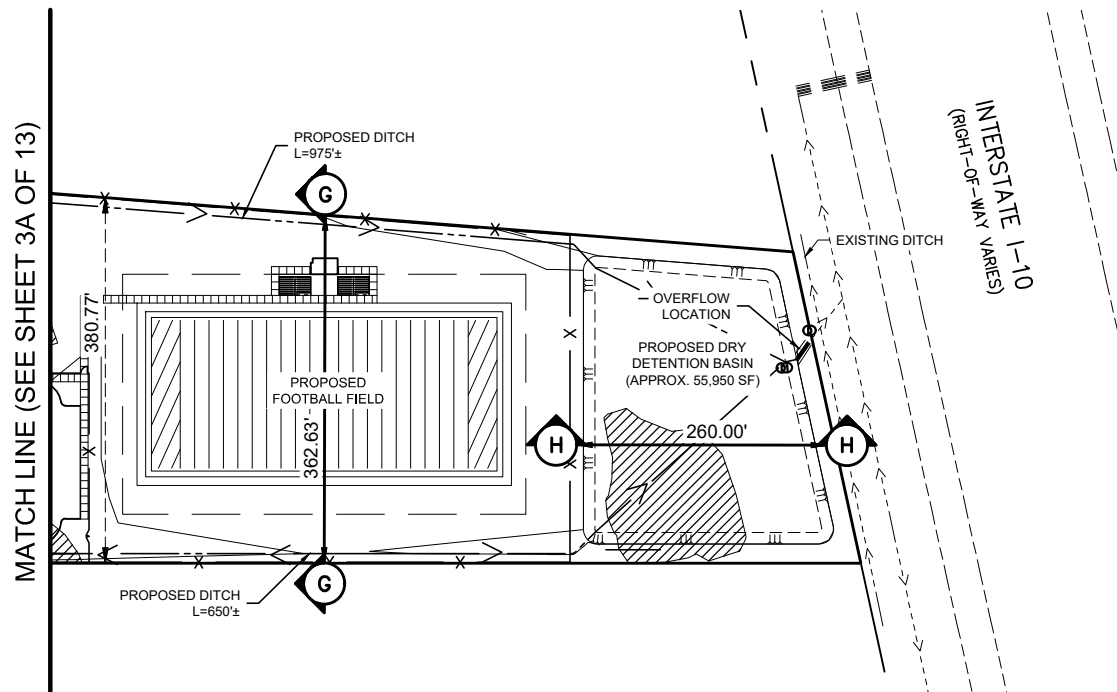
LEGEND	
	DENOTES AREAS WITHIN 100 YR. FLOOD PLAIN (NONE) AS PER FEMA FIRM
	DENOTES AREAS WITHIN WETLANDS (TOTAL ±2.39 AC.) PER MVN 2007-3478-SQ TO BE PERMITTED (MITIGATED)
	—13— PROPOSED CONTOUR
	SECTIONS VIEW

QUALITY
Engineering & Surveying, LLC

18320 Hwy 42 Port Vincent, LA 70726
225.698.1600 | www.qesla.com | info@qesla.com

Title: **SITE PLAN**
WITH CROSS-SECTION LOCATIONS

Project: **ASCENSION MIDDLE SCHOOL**
15464 BLUFF RD.
ASCENSION PARISH, LOUISIANA



SCALE: 1"=200'

NOTE

SEE SHEET 10-11 FOR SECTION VIEW

LEGEND

- DENOTES AREAS WITHIN 100 YR. FLOOD PLAIN (NONE) AS PER FEMA FIRM
- DENOTES AREAS WITHIN WETLANDS (TOTAL ±2.39 AC.) PER MVN 2007-3478-SQ TO BE PERMITTED (MITIGATED)
- 13- PROPOSED CONTOUR
- SECTIONS VIEW

QUALITY
Engineering & Surveying, LLC

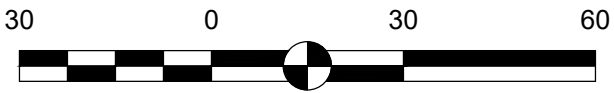
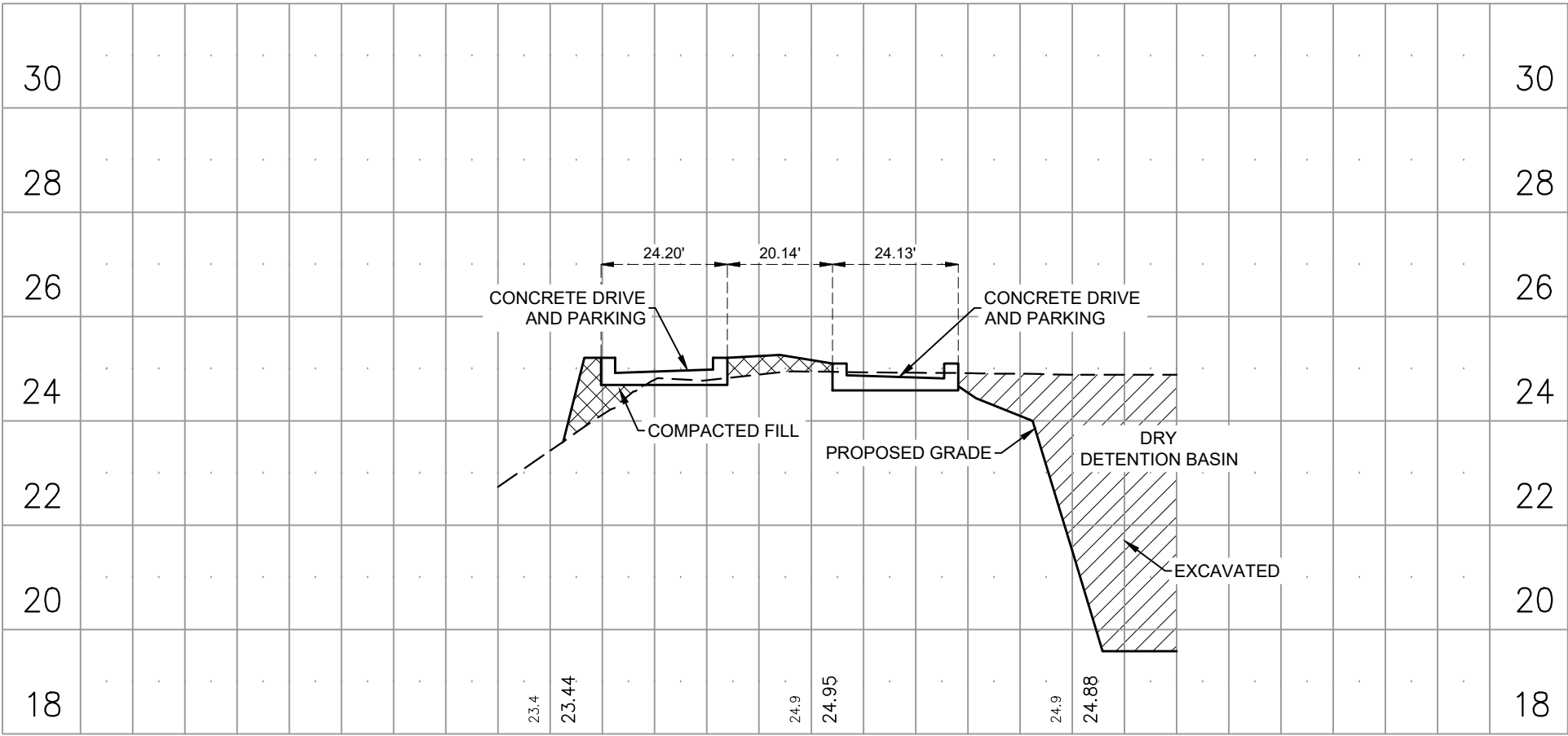
18320 Hwy 42 Port Vincent, LA 70726
225.698.1600 | www.qesia.com | info@qesia.com

Title: **SITE PLAN**
WITH CROSS-SECTION LOCATIONS


Project: **ASCENSION MIDDLE SCHOOL**
15464 BLUFF RD.
ASCENSION PARISH, LOUISIANA

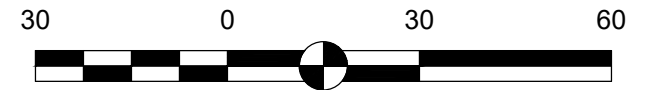
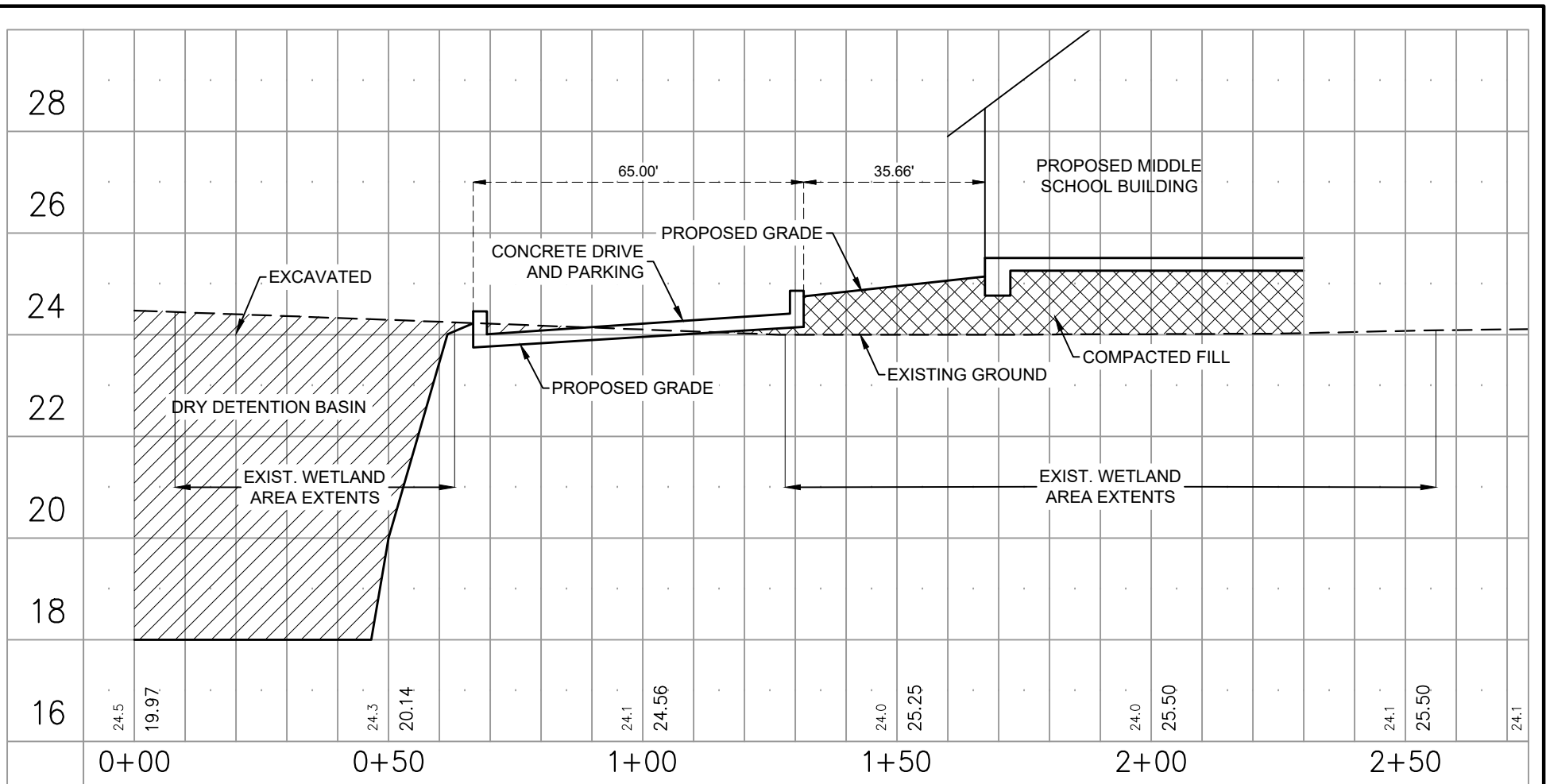
DWG Path: P:\~2017 Projects\17-232 Ascension Middle School\Drawings\Engineering\Exhibits\Wetlands\Current Drawings\17232_04_S1 PLAN.dwg

Drawn By: **SDG** Date: **FEBRURARY 2018** Sheet: **3B of 13**




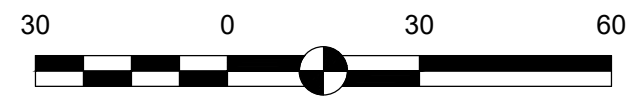
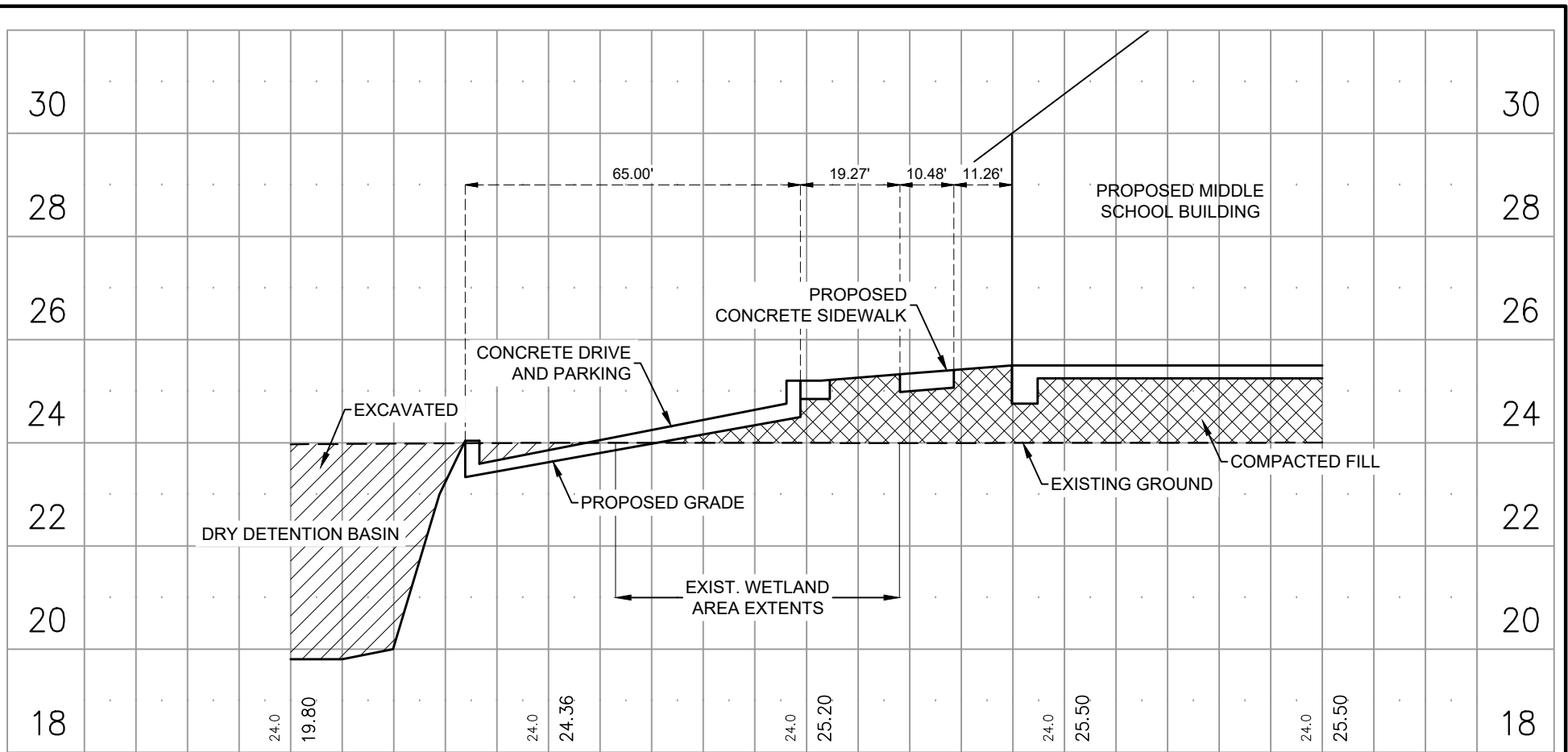
SCALE: HORZ.: 1"=30'
 VERT.: 1"=3'

 <p>QUALITY Engineering & Surveying, LLC 18320 Hwy 42 Port Vincent, LA 70726 225.698.1600 www.qesia.com info@qesia.com</p>	Title: <h2 style="text-align: center;">SECTION A-A</h2>		
	Project: <h3 style="text-align: center;">ASCENSION MIDDLE SCHOOL</h3> <p style="text-align: center;">15464 BLUFF RD. ASCENSION PARISH, LOUISIANA</p>		
DWG Path: P:\2017 Projects\17-232 Ascension Middle School\Drawings\Engineering\Exhibits\Wetlands\Current Drawings\17232_04_SI PLAN.dwg	Drawn By: SDG	Date: FEBRURARY 2018	Sheet: 4 of 13




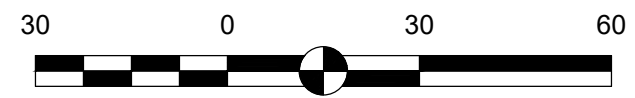
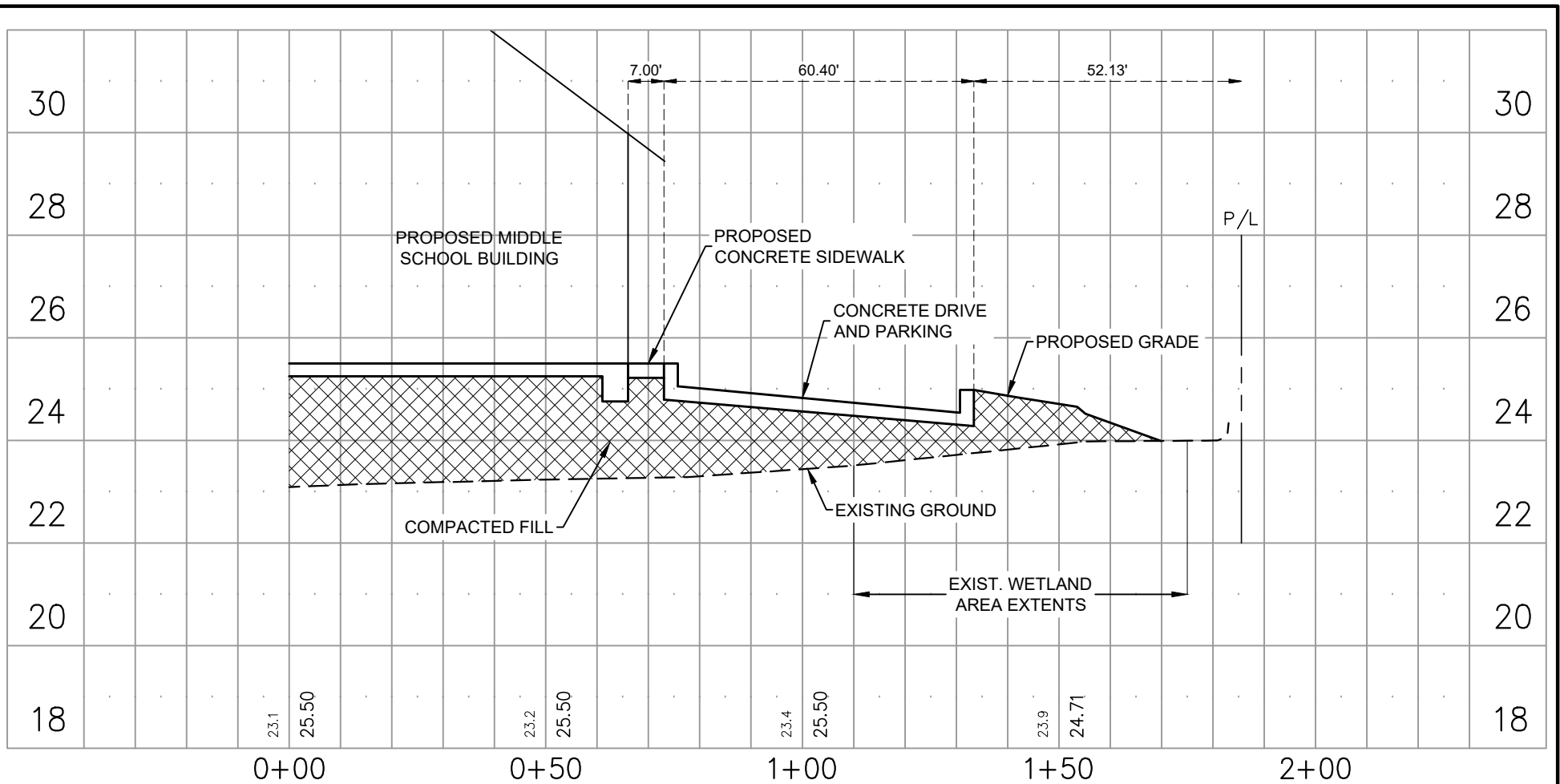
SCALE: HORZ.: 1"=30'
 VERT.: 1"=3'

 <p>QUALITY Engineering & Surveying, LLC 18320 Hwy 42 Port Vincent, LA 70726 225.698.1600 www.qesia.com info@qesia.com</p>	Title: <h2 style="text-align: center;">SECTION B-B</h2>		
	Project: <h3 style="text-align: center;">ASCENSION MIDDLE SCHOOL</h3> <p style="text-align: center;">15464 BLUFF RD. ASCENSION PARISH, LOUISIANA</p>		
DWG Path: P:\2017 Projects\17-232 Ascension Middle School\Drawings\Engineering\Exhibits\Wetlands\Current Drawings\17232_04_S1 PLAN.dwg	Drawn By: SDG	Date: FEBRURARY 2018	Sheet: 5 of 13




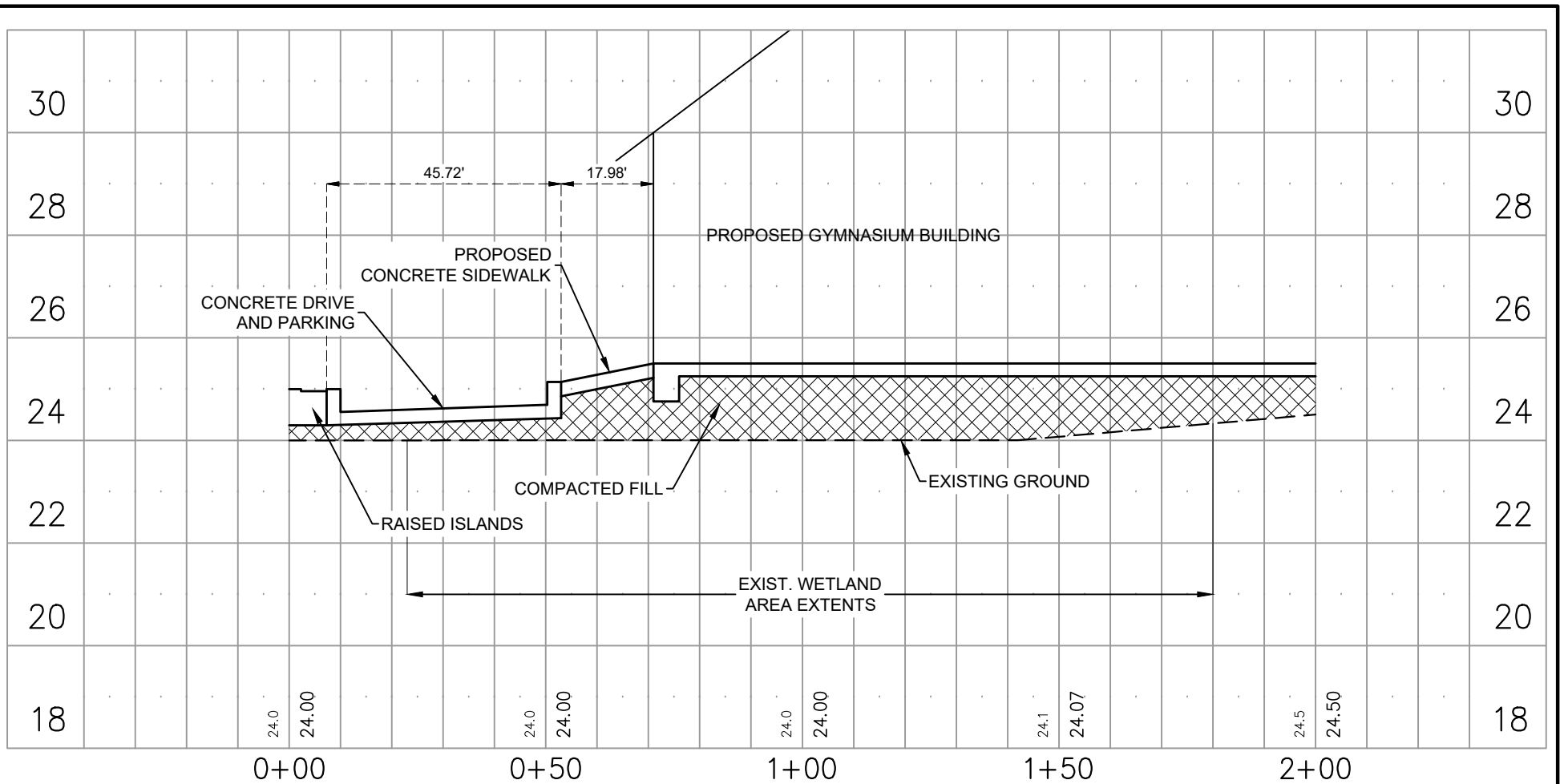
SCALE: HORZ.: 1"=30'
 VERT.: 1"=3'


 <p>QUALITY Engineering & Surveying, LLC 18320 Hwy 42 Port Vincent, LA 70726 225.698.1600 www.qesia.com info@qesia.com</p>	Title: <h2 style="text-align: center;">SECTION C-C</h2>		
	Project: <h3 style="text-align: center;">ASCENSION MIDDLE SCHOOL</h3> <p style="text-align: center;">15464 BLUFF RD. ASCENSION PARISH, LOUISIANA</p>		
DWG Path: P:\2017 Projects\17-232 Ascension Middle School\Drawings\Engineering\Exhibits\Wetlands\Current Drawings\17232_04_SI PLAN.dwg	Drawn By: SDG	Date: FEBRURARY 2018	Sheet: 6 of 13

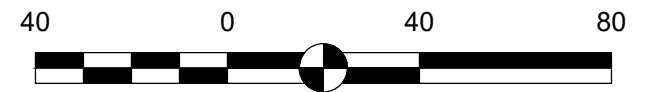
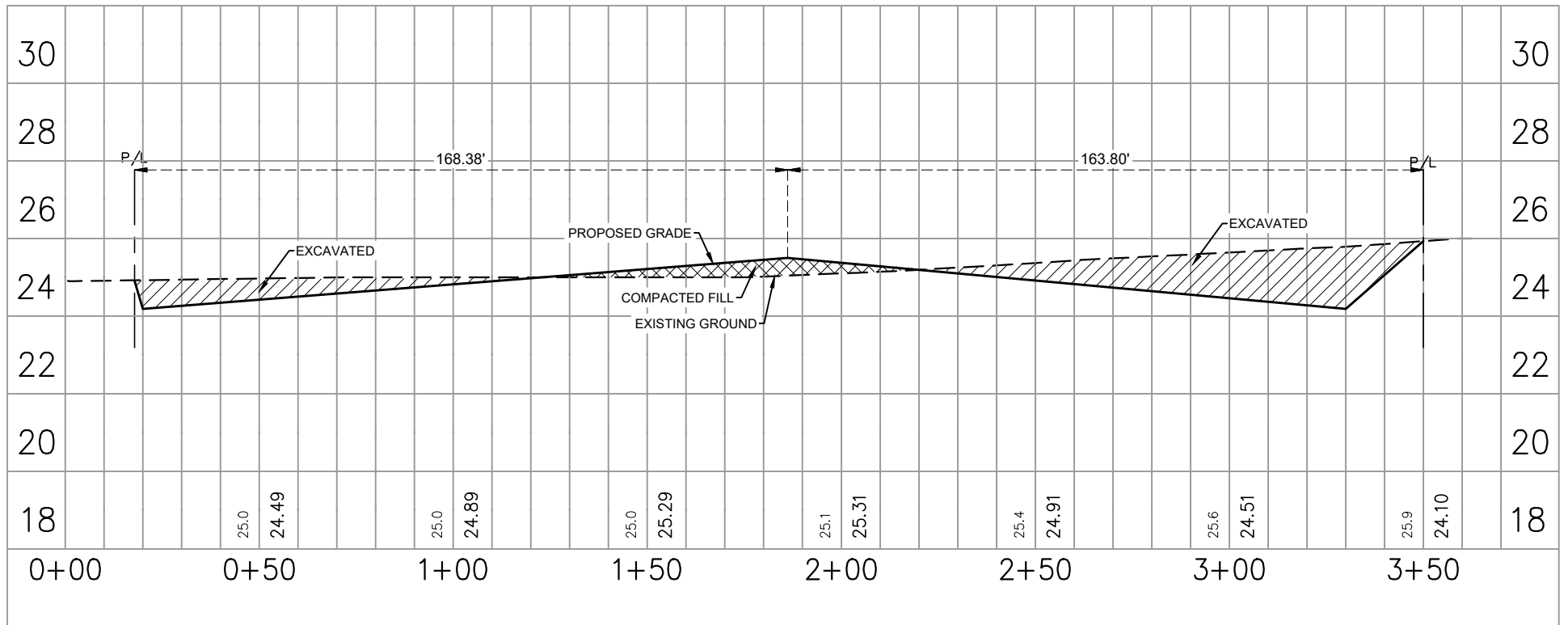


SCALE: HORZ.: 1"=30'
 VERT.: 1"=3'


 <p>QUALITY Engineering & Surveying, LLC 18320 Hwy 42 Port Vincent, LA 70726 225.698.1600 www.qesia.com info@qesia.com</p>	Title: <h2 style="text-align: center;">SECTION D-D</h2>		
	Project: <h3 style="text-align: center;">ASCENSION MIDDLE SCHOOL</h3> <p style="text-align: center;">15464 BLUFF RD. ASCENSION PARISH, LOUISIANA</p>		
DWG Path: P:\2017 Projects\17-232 Ascension Middle School\Drawings\Engineering\Exhibits\Wetlands\Current Drawings\17232_04_SI PLAN.dwg	Drawn By: SDG	Date: FEBRURARY 2018	Sheet: 7 of 13

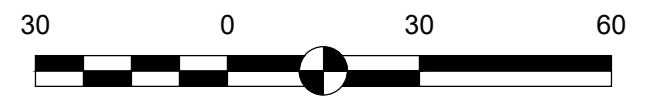
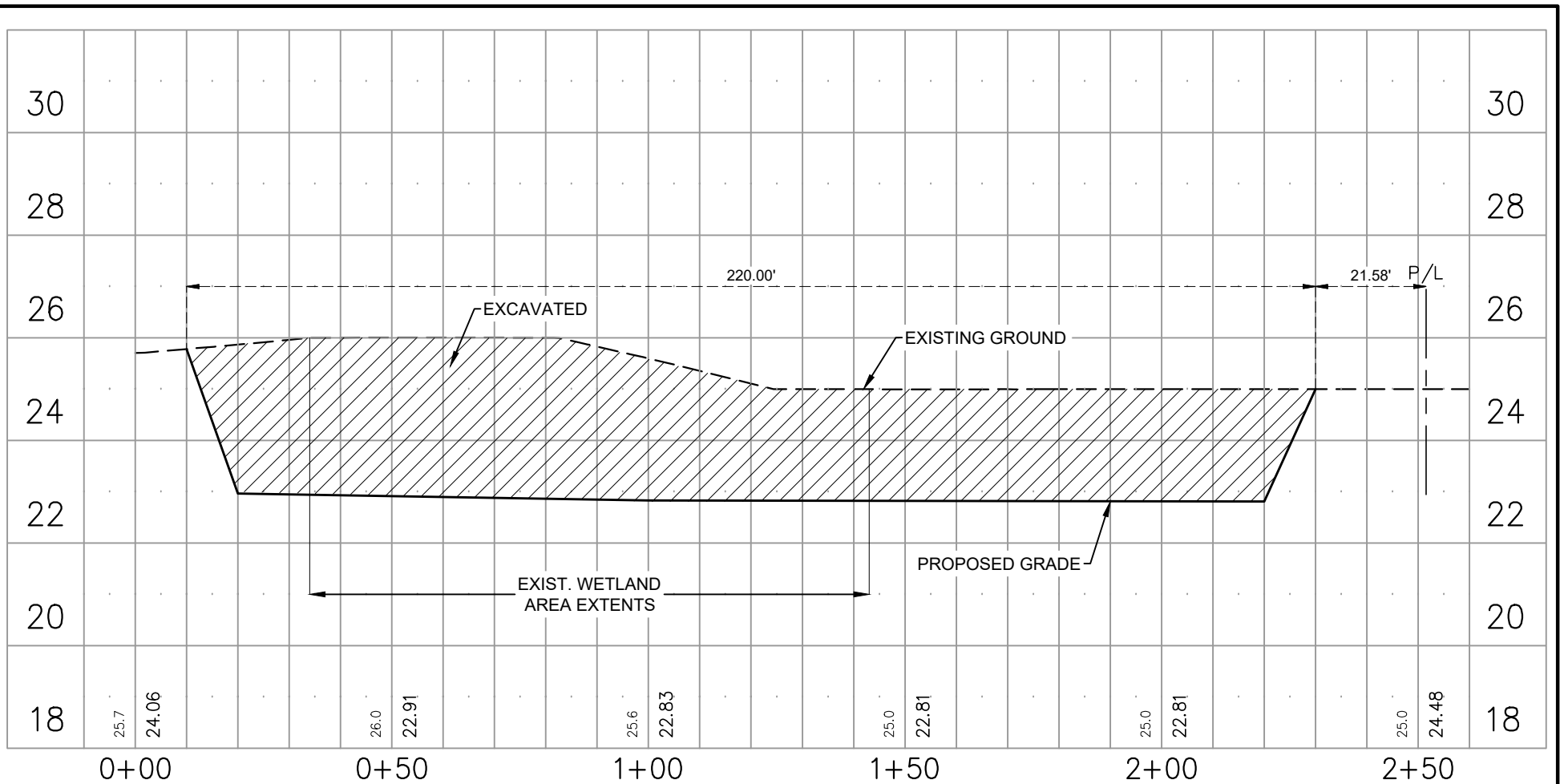


 <p>QUALITY Engineering & Surveying, LLC 18320 Hwy 42 Port Vincent, LA 70726 225.698.1600 www.qesia.com info@qesia.com</p>	<p>Title:</p> <p style="text-align: center;">SECTION E-E</p>		
	<p>Project:</p> <p style="text-align: center;">ASCENSION MIDDLE SCHOOL 15464 BLUFF RD. ASCENSION PARISH, LOUISIANA</p>		
<p>DWG Path: P:\2017 Projects\17-232 Ascension Middle School\Drawings\Engineering\Exhibits\Wetlands\Current Drawings\17232_04_SI PLAN.dwg</p>	<p>Drawn By: SDG</p>	<p>Date: FEBRURARY 2018</p>	<p>Sheet: 8 of 13</p>




SCALE: HORZ.: 1"=40'
 VERT.: 1"=4'

 <p>QUALITY Engineering & Surveying, LLC 18320 Hwy 42 Port Vincent, LA 70726 225.698.1600 www.qesia.com info@qesia.com</p>	Title: <h2 style="text-align: center;">SECTION G-G</h2>		
	Project: <h3 style="text-align: center;">ASCENSION MIDDLE SCHOOL</h3> <p style="text-align: center;">15464 BLUFF RD. ASCENSION PARISH, LOUISIANA</p>		
DWG Path: P:\~2017 Projects\17-232 Ascension Middle School\Drawings\Engineering\Exhibits\Wellands\Current Drawings\17232_04_S1 PLAN.dwg	Drawn By: SDG	Date: FEBRURARY 2018	Sheet: 10 of 13



SCALE: HORZ.: 1"=30'
 VERT.: 1"=3'

 <p>QUALITY Engineering & Surveying, LLC 18320 Hwy 42 Port Vincent, LA 70726 225.698.1600 www.qesia.com info@qesia.com</p>	Title: <h2 style="text-align: center;">SECTION H-H</h2>		
	Project: <h3 style="text-align: center;">ASCENSION MIDDLE SCHOOL</h3> <p style="text-align: center;">15464 BLUFF RD. ASCENSION PARISH, LOUISIANA</p>		
DWG Path: P:\2017 Projects\17-232 Ascension Middle School\Drawings\Engineering\Exhibits\Wetlands\Current Drawings\17232_04_S1 PLAN.dwg	Drawn By: SDG	Date: FEBRURARY 2018	Sheet: 11 of 13