

# JOINT PUBLIC NOTICE

February 20, 2017

United States Army  
Corps of Engineers  
New Orleans District  
Regulatory Branch  
7400 Leake Avenue  
New Orleans, Louisiana 70118-3651

(504) 862-2284

[Sara.B.Fortuna@usace.army.mil](mailto:Sara.B.Fortuna@usace.army.mil)

Project Manager  
Sara Fortuna  
Permit Application Number  
MVN-2015-02191-WKK

State of Louisiana  
Department of Environmental Quality  
ATTN: Water Quality Certifications  
Post Office Box 4313  
Baton Rouge, Louisiana 70821-4313

(225) 219-3225

[Elizabeth.Hill@la.gov](mailto:Elizabeth.Hill@la.gov)

Project Manager  
Elizabeth Hill  
WQC Application Number  
WQC 170208-02

Interested parties are hereby notified that a permit application has been received by the New Orleans District of the U.S. Army Corps of Engineers pursuant to: [ ] Section 10 of the Rivers and Harbors Act of March 3, 1899 (30 Stat. 1151; 33 USC 403); and/or [X] Section 404 of the Clean Water Act (86 Stat. 816; 33 USC 1344).

Application has also been made to the Louisiana Department of Environmental Quality, Water Quality Certifications, for a Water Quality Certification (WQC) in accordance with statutory authority contained in LRS30:2047 A(3), and provisions of Section 401 of the Clean Water Act (P.L.95-17).

## **LABOR HOUSING DEVELOPMENT IN CALCASIEU PARISH**

**NAME OF APPLICANT:** APB Land Resources, L.L.C., c/o Environmental Management Solutions, L.L.C., 10725 Hillshire Avenue, Baton Rouge, Louisiana 70810.

**LOCATION OF WORK:** Near Choupique Bayou, off Prater Road, in the community of Sulphur, in Calcasieu Parish, Louisiana, as shown on the enclosed drawings.

Location: Latitude: 30.244173° N / Longitude: -93.315068° W, Hydrologic Unit Code: 08080206 – Calcasieu Basin.

The work described below was partially completed prior to obtaining a Department of the Army permit and was in violation of Section 301 of the Clean Water Act. All legal issues concerning the unauthorized work have been deferred.

**CHARACTER OF WORK:** Conduct clearing and grading operations, excavate approximately 94,100 cubic yards of earthen material for detention ponds and drainage ditches, and place approximately 35,000 tons of crushed aggregate for roadway, parking, and driving surfaces and 94,100 cubic yards of excavated earthen material and 5,000 cubic yards of hauled-in fill material for grading and shaping operations, all to prepare a 120 acre site for a labor housing development. The labor housing development would include labor houses, driveways, parking areas, access road from Prater Street, detention ponds, pad spaces for generators, and other project related amenities. The purpose for the labor housing development is to provide housing for migrant workers. After-the-fact work includes clearing and grading operations of 37.0 acres of forested wetlands on Tracts A and B. Road work between Tracts A and B was in the process of being constructed. Approximately 0.22 of an acre of

jurisdictional forested wetland was impacted from the road work. Approximately 14,430 cubic yards of hauled-in fill material and 650 tons of crushed aggregate were placed within Tracts A and B; however, no work has been done on Tract C. A total of approximately 61.3 acres of jurisdictional forested wetlands would be permanently impacted via project implementation. The applicant agrees to compensate for wetland impacts by purchasing credits at a Department of the Army approved mitigation bank.

The applicant may be required to fully or partially restore the project site to preproject conditions, if issuance of a permit is determined to be contrary to the overall public interest.

The comment period for the Department of the Army Permit and the Louisiana Department of Environmental Quality WQC will close **20 days** from the date of this joint public notice. Written comments, including suggestions for modifications or objections to the proposed work, stating reasons thereof, are being solicited from anyone having interest in this permit and/or this WQC request and must be mailed so as to be received before or by the last day of the comment period. Letters concerning the Corps of Engineers permit application must reference the applicant's name and the Permit Application Number, and be mailed to the Corps of Engineers at the address above, **ATTENTION: REGULATORY BRANCH. Similar letters concerning the Water Quality Certification must reference the applicant's name and the WQC Application number and be mailed to the Louisiana Department of Environmental Quality at the address above.**

Individuals or parties may request an extension of time in which to comment on the proposed work by writing or e-mailing the Corps of Engineers Project Manager listed above. Any request must be specific and substantively supportive of the requested extension, and received by this office prior to the end of the initial comment period. The Section Chief will review the request and the requestor will be promptly notified of the decision to grant or deny the request. If granted, the time extension will be continuous to the initial comment period and, inclusive of the initial comment period, will not exceed a total of 30 calendar days.

The application for this proposed project is on file with the Louisiana Department of Environmental Quality and may be examined during weekdays between 8:00 a.m. and 4:30 p.m. Copies may be obtained upon payment of costs of reproduction.

### **Corps of Engineers Permit Criteria**

The decision whether to issue a permit will be based on an evaluation of the probable impacts, including cumulative impacts of the proposed activity on the public interest. That decision will reflect the national concern for both protection and utilization of important resources. The benefit which reasonably may be expected to accrue from the proposal must be balanced against its reasonably foreseeable detriments. All factors which may be relevant to the proposal will be considered including the cumulative effects thereof; among those are conservation, economics, aesthetics, general environmental concerns, wetlands, historic properties, fish and wildlife values, flood hazards, floodplain values, land use, navigation, shoreline erosion and accretion, recreation, water supply and conservation, water quality, energy needs, safety, food and fiber production, mineral needs, considerations of property ownership and, in general, the needs and welfare of the people.

The U.S. Army Corps of Engineers is soliciting comments from the public, federal, state, and local agencies and officials, Indian Tribes, and other interested parties in order to consider and evaluate the impacts of this proposed activity. Any comments received will be considered by the U.S. Army Corps of Engineers to determine whether to make, modify, condition, or deny a permit for this proposal. To make this decision, comments are used to assess impacts on endangered species, historic properties, water quality, general environmental effects, and other public interest factors listed

above. Comments are used in the preparation of an Environmental Assessment and/or an Environmental Impact Statement pursuant to the National Environmental Policy Act. Comments are also used to determine the need for a public hearing and to determine the overall public interest of the proposed activity.

The New Orleans District is unaware of properties listed on the National Register of Historic Places near the proposed work. The possibility exists that the proposed work may damage or destroy presently unknown archeological, scientific, prehistorical, historical sites, or data. Copies of this public notice are being sent to the State Archeologist and State Historic Preservation Officer regarding potential impacts to cultural resources.

Our initial finding is that the proposed work would neither affect any species listed as endangered by the U.S. Departments of Interior or Commerce, nor affect any habitat designated as critical to the survival and recovery of any endangered species. Utilizing Standard Local Operating Procedure for Endangered Species in Louisiana (SLOPES), dated October 22, 2014, between the U.S. Army Corps of Engineers, New Orleans and U.S. Fish and Wildlife Service, Ecological Services Office, the Corps has determined that the proposed activity would have no effect on any listed species.

This notice initiates the Essential Fish Habitat (EFH) consultation requirements of the Magnuson-Stevens Fishery Conservation and Management Act. The applicant's proposal would result in the destruction or alteration of N/A of an acre of EFH utilized by various life stages of red drum and penaeid shrimp. Our initial determination is that the proposed action would not have a substantial adverse impact on EFH or federally managed fisheries in the Gulf of Mexico. Our final determination relative to project impacts and the need for mitigation measures is subject to review by and coordination with the National Marine Fisheries Service.

If the proposed work involves deposits of dredged or fill material into navigable waters, the evaluation of the probable impacts will include the application of guidelines established by the Administrator of the Environmental Protection Agency. Also, a certification that the proposed activity will not violate applicable water quality standards will be required from the Department of Environmental Quality, Water Quality Certifications, before a permit is issued.

Any person may request, in writing, within the comment period specified in this notice, that a public hearing be held to consider this application. Requests for public hearings shall state, with particularity, the reasons for holding a public hearing.

You are requested to communicate the information contained in this notice to any other parties whom you deem likely to have interest in the matter.

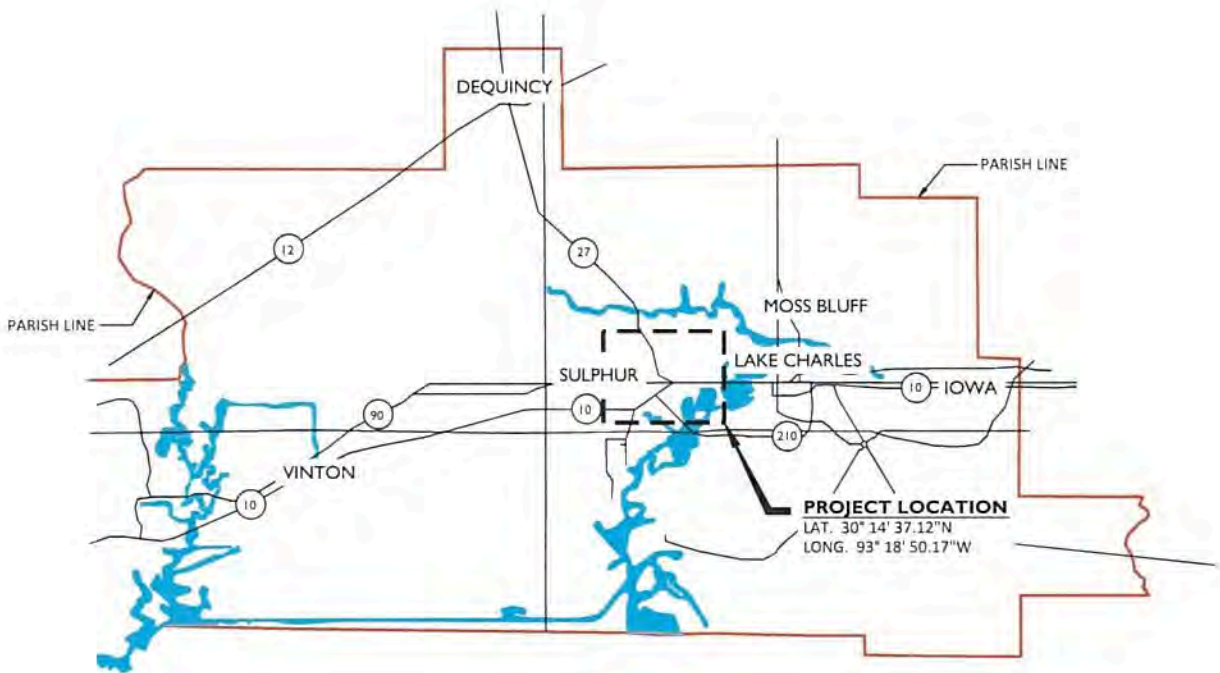
Darrell S. Barbara  
Chief, Western Evaluation Section  
Regulatory Branch

Enclosure

NOTE: THESE DRAWINGS ARE TO BE USED EXCLUSIVELY FOR ACQUISITION OF REGULATORY PERMITS.

REVISED:

# CALCASIEU PARISH, LOUISIANA



THE CYPRESS GROUP  
4310 RYAN ST. STE 122  
LAKE CHARLES, LA  
OFFICE - 337.504.7755  
FAX - 337.504.7744

**MIKE BURDINE**  
PRATER RD. WEST TRACT

VICINITY MAP

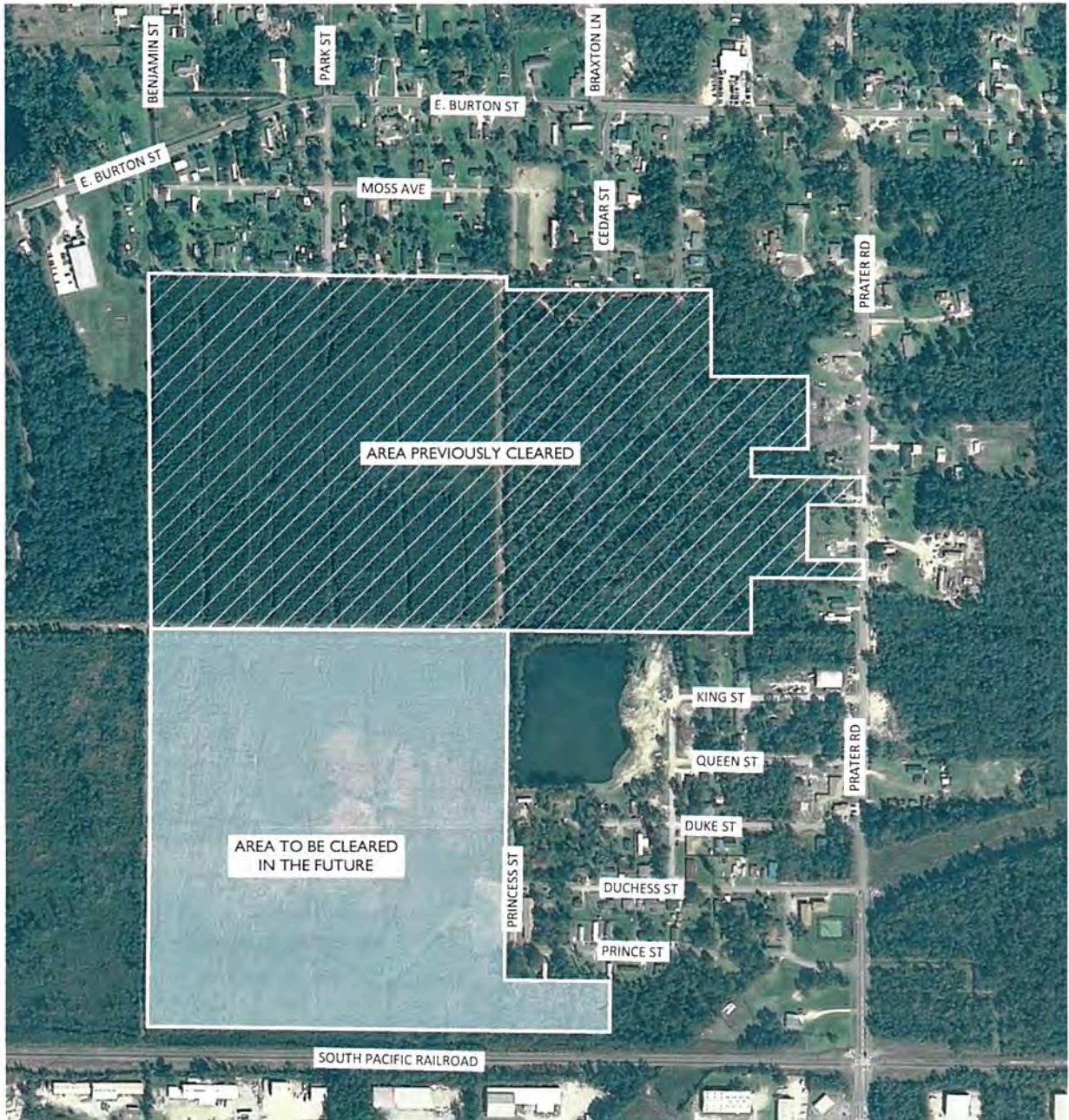
C.G.M.  
08/22/2016  
1" = 5,000'

**1**

NOTE: THESE DRAWINGS ARE TO BE USED EXCLUSIVELY FOR ACQUISITION OF REGULATORY PERMITS.

REVISED:

# CALCASIEU PARISH, LOUISIANA



THE CYPRESS GROUP  
4310 RYAN ST. STE 122  
LAKE CHARLES, LA  
OFFICE - 337.504.7755  
FAX - 337.504.7744

**MIKE BURDINE**  
PRATER RD. WEST TRACT

### PROJECT LOCATION

C.G.M.  
08/22/2016  
1" = 600'

2

NOTE: THESE DRAWINGS ARE TO BE USED EXCLUSIVELY FOR ACQUISITION OF REGULATORY PERMITS.

REVISED:

# CALCASIEU PARISH, LOUISIANA



- 100% WET-APPROX 39.3 WETLAND ACRES
- 12% WET-APPROX 2.8 WETLAND ACRES
- 48% WET-APPROX 16.9 WETLAND ACRES
- 23% WET-APPROX 0.7 WETLAND ACRES



THE CYPRESS GROUP  
4310 RYAN ST. STE 122  
LAKE CHARLES, LA  
OFFICE - 337.504.7755  
FAX - 337.504.7744

MIKE BURDINE  
PRATER RD. WEST TRACT

## WETLANDS

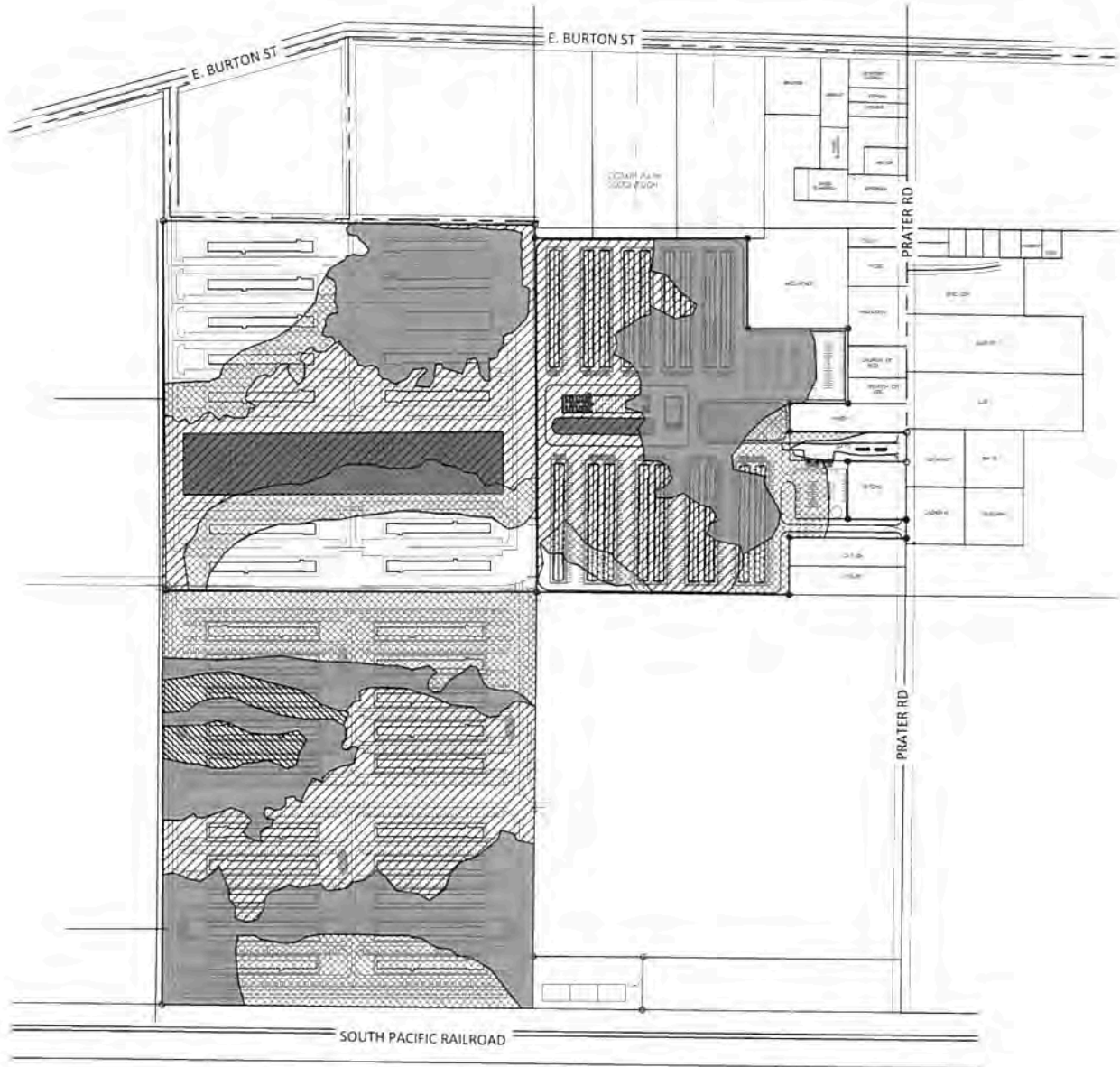
C.G.M.  
08/22/2016  
1" = 600'

3

NOTE: THESE DRAWINGS ARE TO BE USED EXCLUSIVELY FOR ACQUISITION OF REGULATORY PERMITS.

REVISED:

# CALCASIEU PARISH, LOUISIANA



-  100% WET-APPROX 39.3 WETLAND ACRES
-  12% WET-APPROX 2.8 WETLAND ACRES
-  48% WET-APPROX 16.9 WETLAND ACRES
-  23% WET-APPROX 0.7 WETLAND ACRES



THE CYPRESS GROUP  
 4310 RYAN ST. STE 122  
 LAKE CHARLES, LA  
 OFFICE - 337.504.7755  
 FAX - 337.504.7744

**MIKE BURDINE**  
 PRATER RD. WEST TRACT

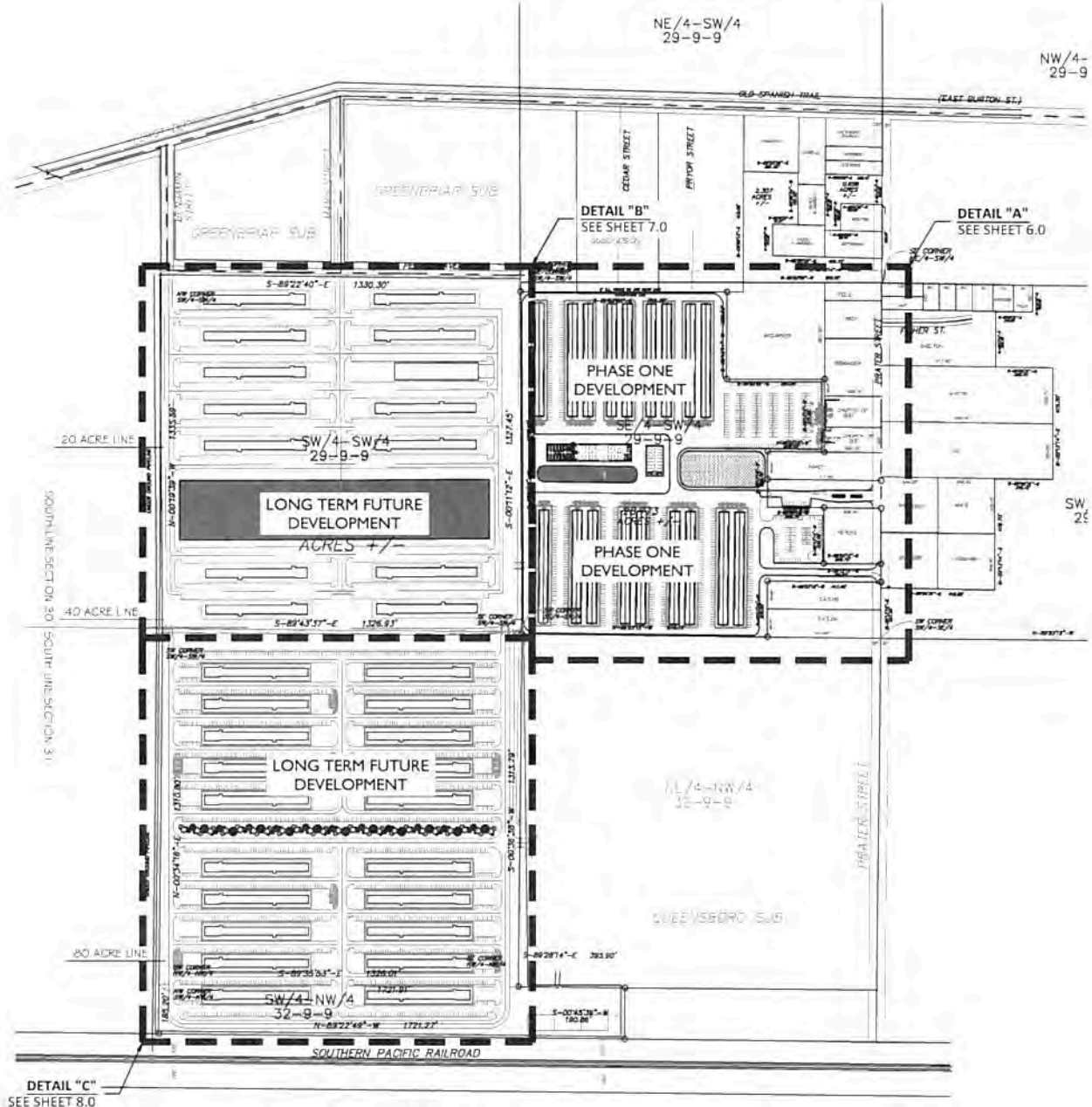
WETLANDS

C.G.M.  
 08/22/2016  
 1" = 600'

NOTE: THESE DRAWINGS ARE TO BE USED EXCLUSIVELY FOR ACQUISITION OF REGULATORY PERMITS.

REVISED:

# CALCASIEU PARISH, LOUISIANA



THE CYPRESS GROUP  
4310 RYAN ST. STE 122  
LAKE CHARLES, LA  
OFFICE - 337.504.7755  
FAX - 337.504.7744

**MIKE BURDINE**  
PRATER RD. WEST TRACT

SITE PLAN

C.G.M.  
08/22/2016  
1" = 600'

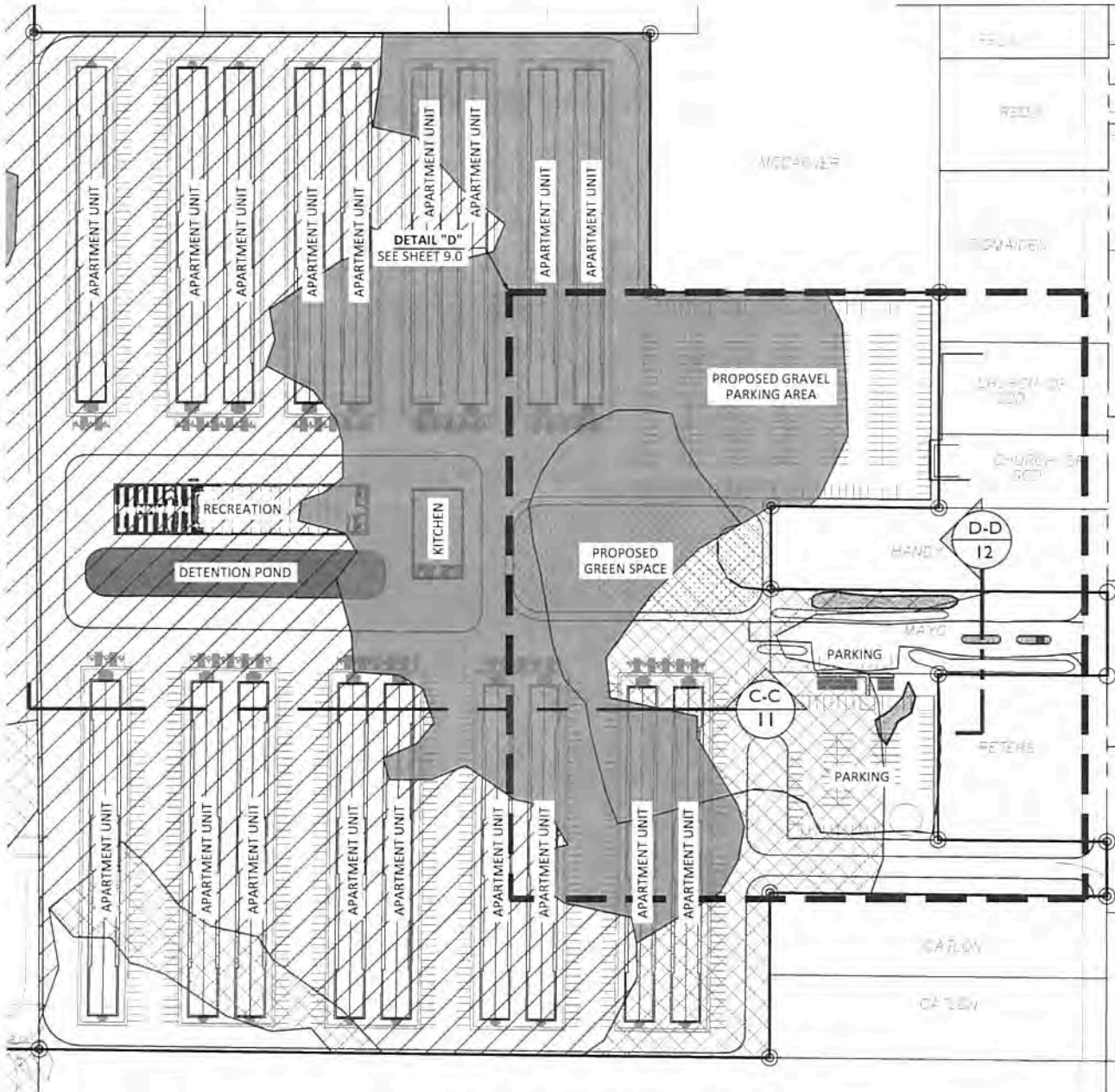
5



NOTE: THESE DRAWINGS ARE TO BE USED EXCLUSIVELY FOR ACQUISITION OF REGULATORY PERMITS.

REVISED:

CALCASIEU PARISH, LOUISIANA



- 100% WET-APPROX 39.3 WETLAND ACRES
- 12% WET-APPROX 2.8 WETLAND ACRES
- 48% WET-APPROX 16.9 WETLAND ACRES
- 23% WET-APPROX 0.7 WETLAND ACRES

THE CYPRESS GROUP  
4310 RYAN ST. STE 122  
LAKE CHARLES, LA  
OFFICE - 337.504.7755  
FAX - 337.504.7744

**MIKE BURDINE**  
PRATER RD. WEST TRACT

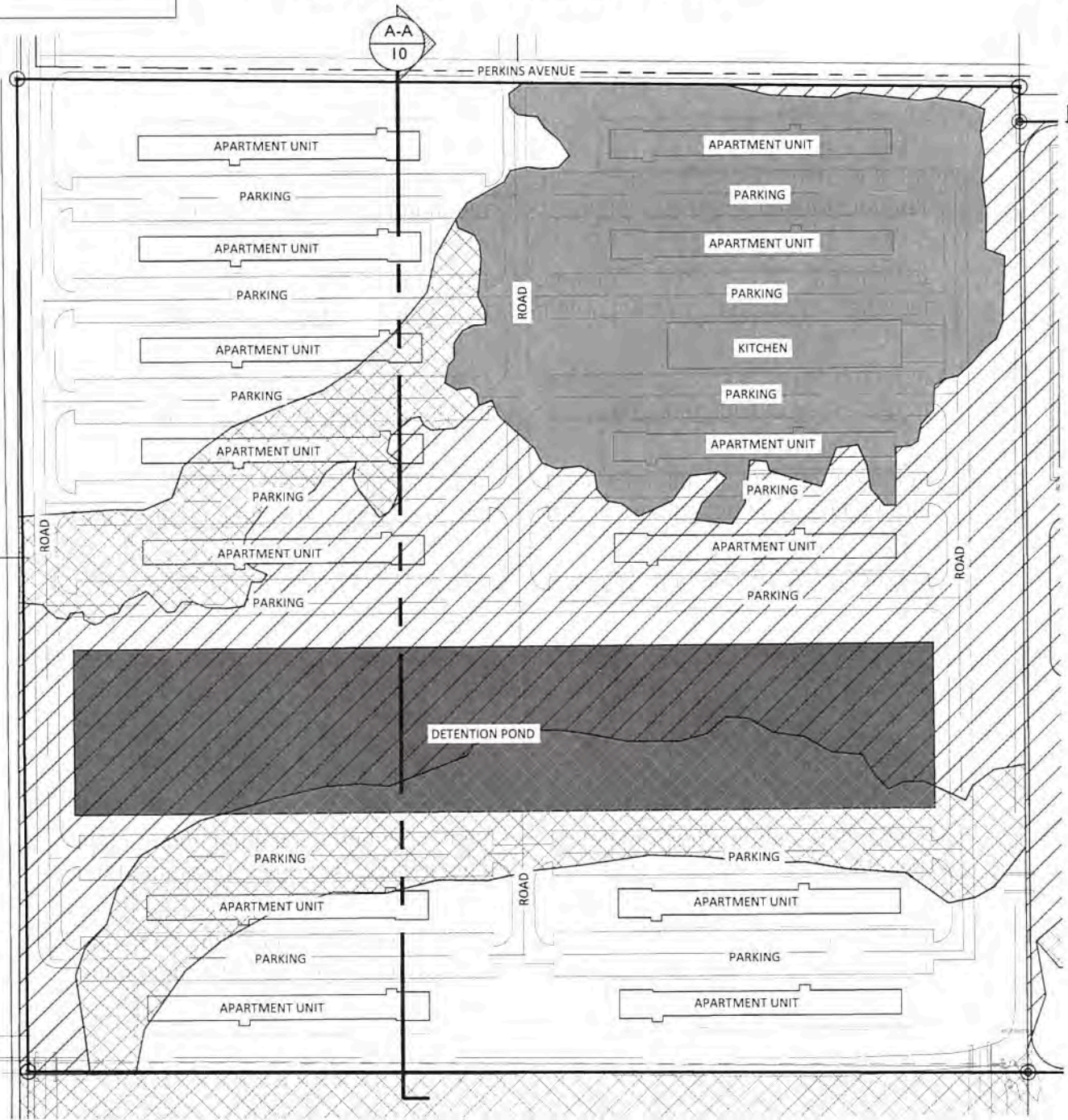
**DETAIL "A"**

C.G.M.	<b>6</b>
08/22/2016	
1" = 200'	

NOTE: THESE DRAWINGS ARE TO BE USED EXCLUSIVELY FOR ACQUISITION OF REGULATORY PERMITS.

REVISED:

# CALCASIEU PARISH, LOUISIANA



- 100% WET-APPROX 39.3 WETLAND ACRES
- 12% WET-APPROX 2.8 WETLAND ACRES
- 48% WET-APPROX 16.9 WETLAND ACRES
- 23% WET-APPROX 0.7 WETLAND ACRES



THE CYPRESS GROUP  
 4310 RYAN ST. STE 122  
 LAKE CHARLES, LA  
 OFFICE - 337.504.7755  
 FAX - 337.504.7744

**MIKE BURDINE**  
 PRATER RD. WEST TRACT

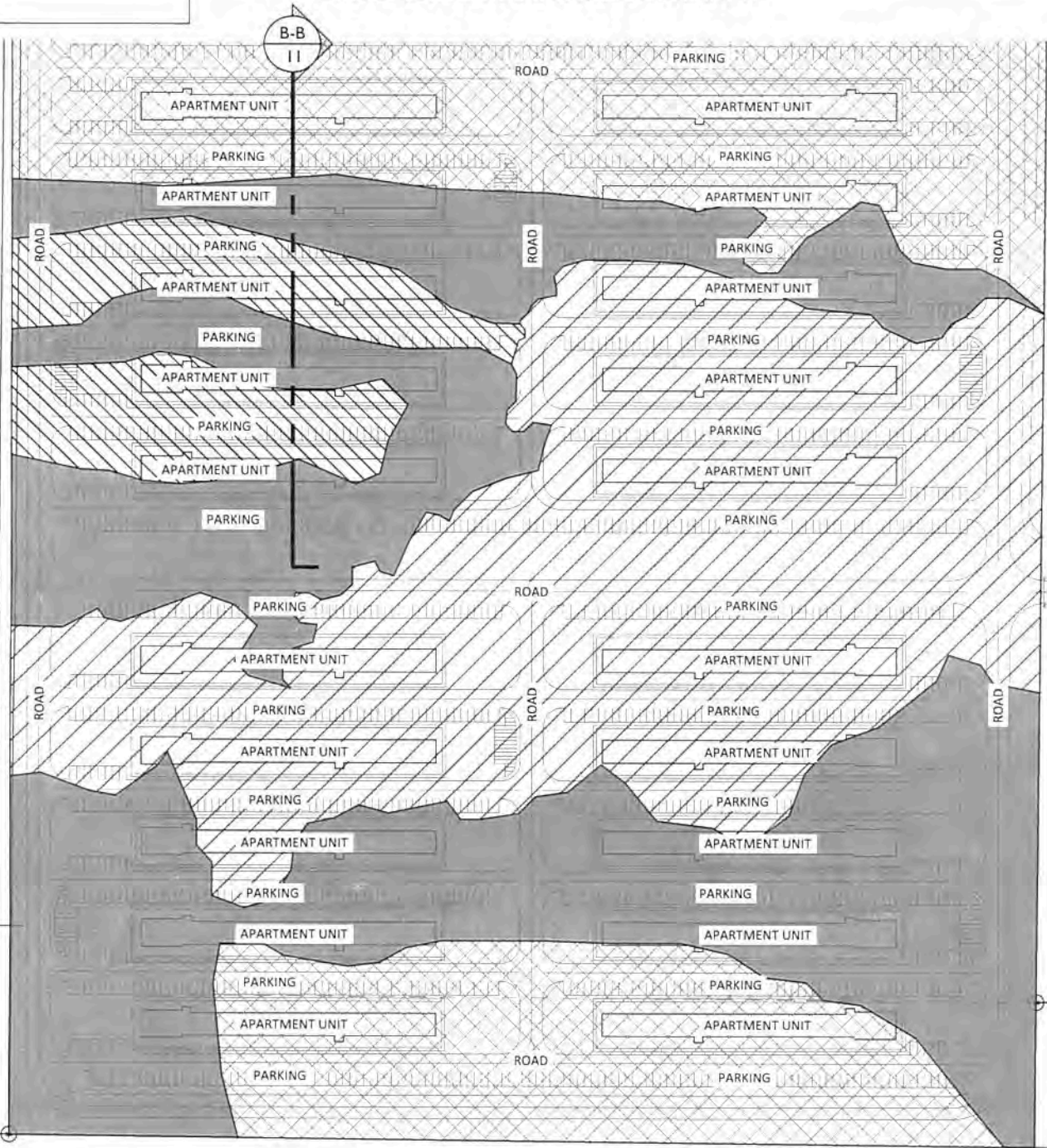
DETAIL "B"

C.G.M.  
 08/22/2016  
 1" = 200'

NOTE: THESE DRAWINGS ARE TO BE USED EXCLUSIVELY FOR ACQUISITION OF REGULATORY PERMITS.

REVISED:

# CALCASIEU PARISH, LOUISIANA



- 100% WET-APPROX 39.3 WETLAND ACRES
- 12% WET-APPROX 2.8 WETLAND ACRES
- 48% WET-APPROX 16.9 WETLAND ACRES
- 23% WET-APPROX 0.7 WETLAND ACRES



THE CYPRESS GROUP  
 4310 RYAN ST. STE 122  
 LAKE CHARLES, LA  
 OFFICE - 337.504.7755  
 FAX - 337.504.7744

**MIKE BURDINE**  
 PRATER RD. WEST TRACT

DETAIL "C"

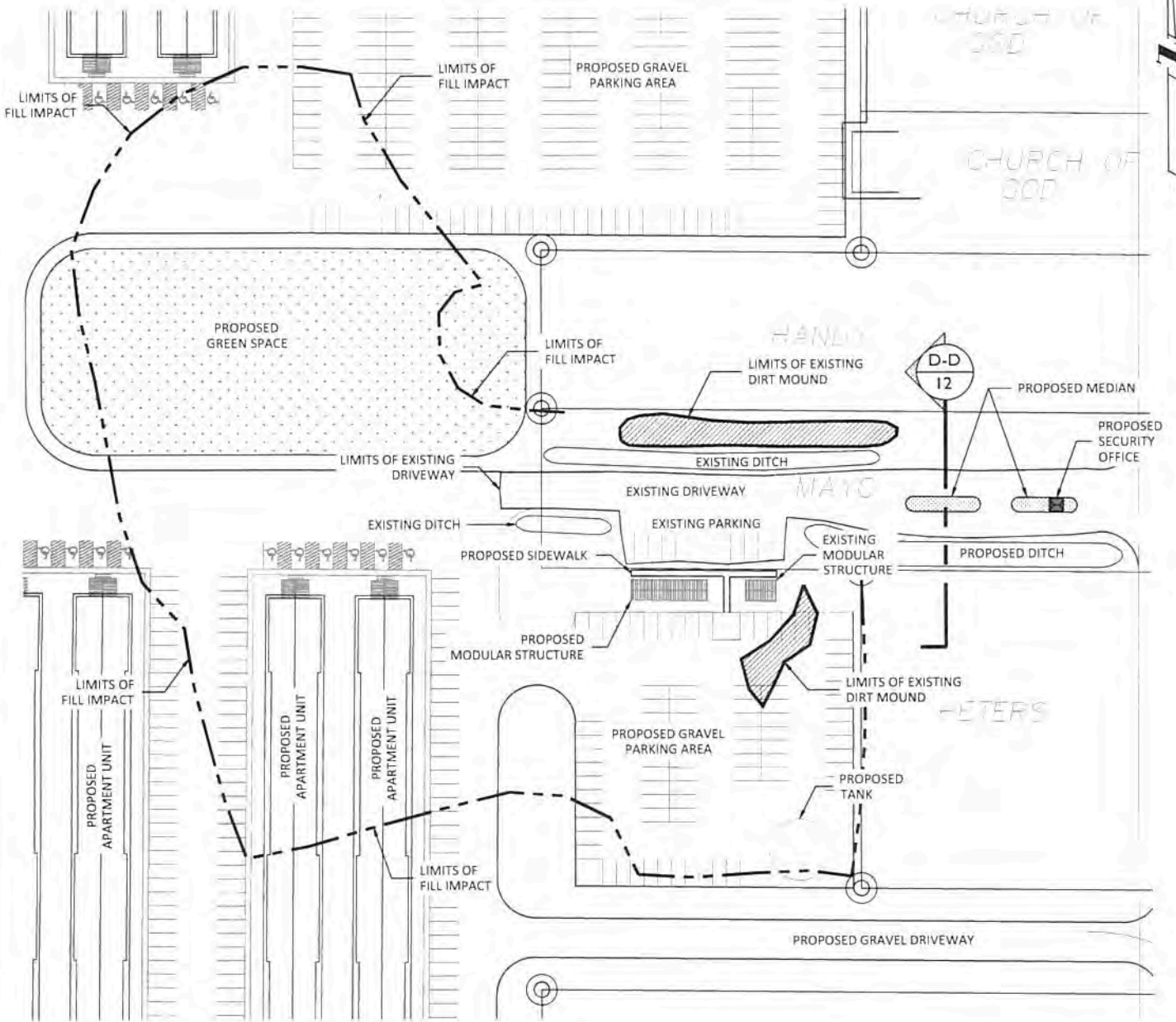
C.G.M.  
 08/22/2016  
 1" = 200'

8

NOTE: THESE DRAWINGS ARE TO BE USED EXCLUSIVELY FOR ACQUISITION OF REGULATORY PERMITS.

REVISED:

# CALCASIEU PARISH, LOUISIANA



THE CYPRESS GROUP  
4310 RYAN ST. STE 122  
LAKE CHARLES, LA  
OFFICE - 337.504.7755  
FAX - 337.504.7744

**MIKE BURDINE**  
PRATER RD. WEST TRACT

DETAIL "D"

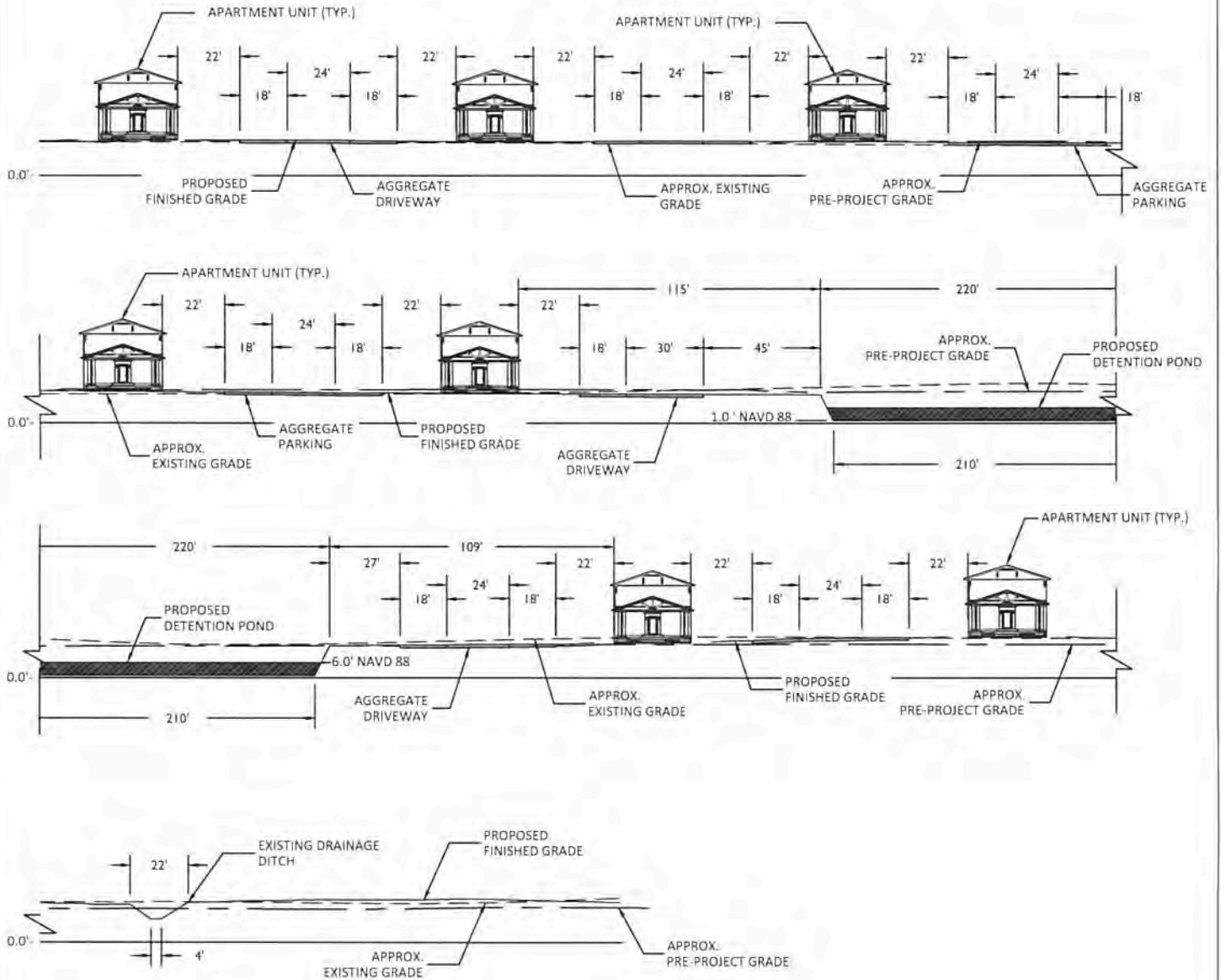
C.G.M.  
08/01/2016  
1" = 100'

9

NOTE: THESE DRAWINGS ARE TO BE USED EXCLUSIVELY FOR ACQUISITION OF REGULATORY PERMITS.

REVISED:

# CALCASIEU PARISH, LOUISIANA



THE CYPRESS GROUP  
 4310 RYAN ST. STE 122  
 LAKE CHARLES, LA  
 OFFICE - 337.504.7755  
 FAX - 337.504.7744

**MIKE BURDINE**  
 PRATER RD. WEST TRACT

**SECTION "A-A"**

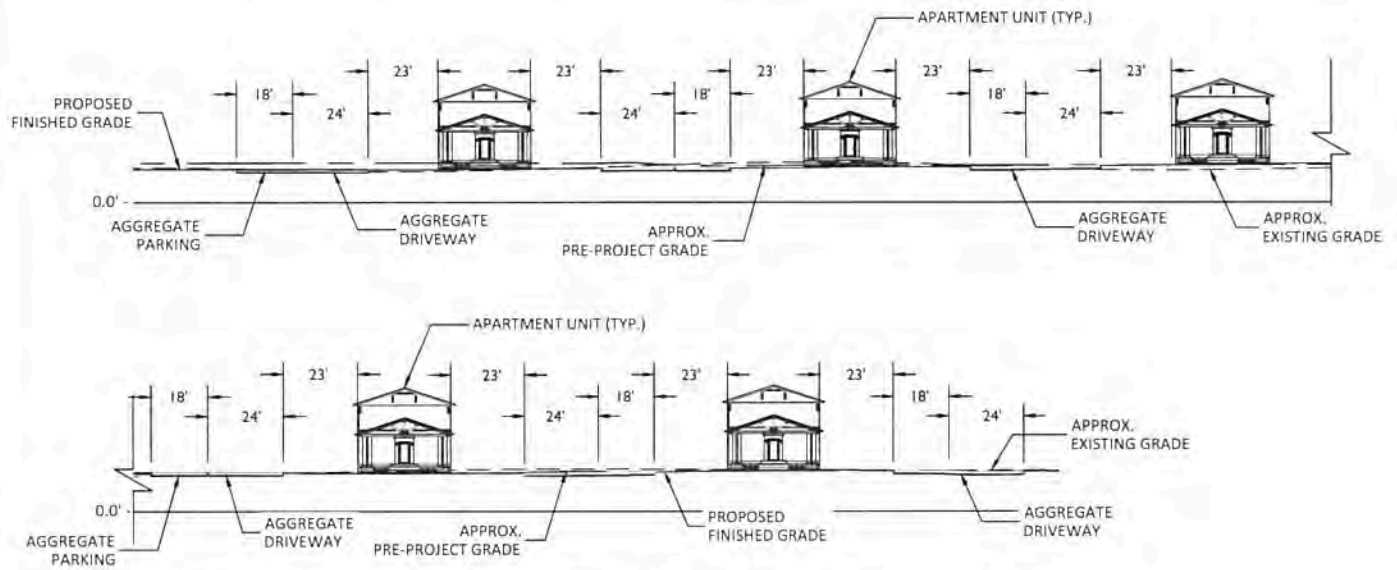
C.G.M.  
 08/22/2016  
 1" = 60'

**10**

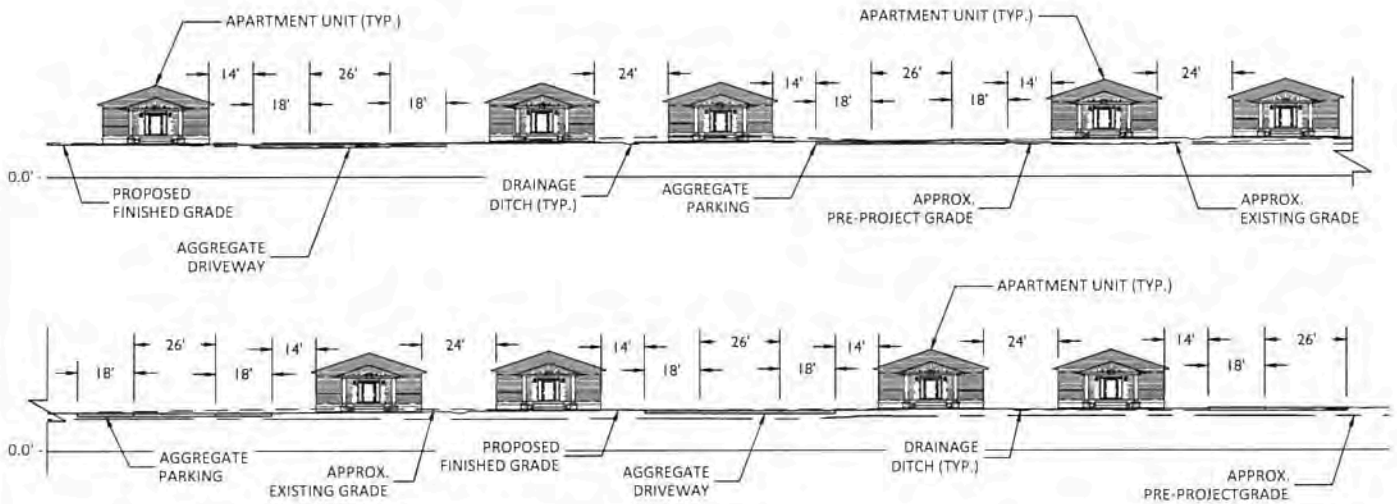
NOTE: THESE DRAWINGS ARE TO BE USED EXCLUSIVELY FOR ACQUISITION OF REGULATORY PERMITS.

REVISED:

# CALCASIEU PARISH, LOUISIANA



**SECTION "B-B"**  
SCALE: 1" = 60'



**SECTION "C-C"**  
SCALE: 1" = 60'



THE CYPRESS GROUP  
4310 RYAN ST. STE 122  
LAKE CHARLES, LA  
OFFICE - 337.504.7755  
FAX - 337.504.7744

**MIKE BURDINE**  
PRATER RD. WEST TRACT

**SECTION "B-B" AND  
SECTION "C-C"**

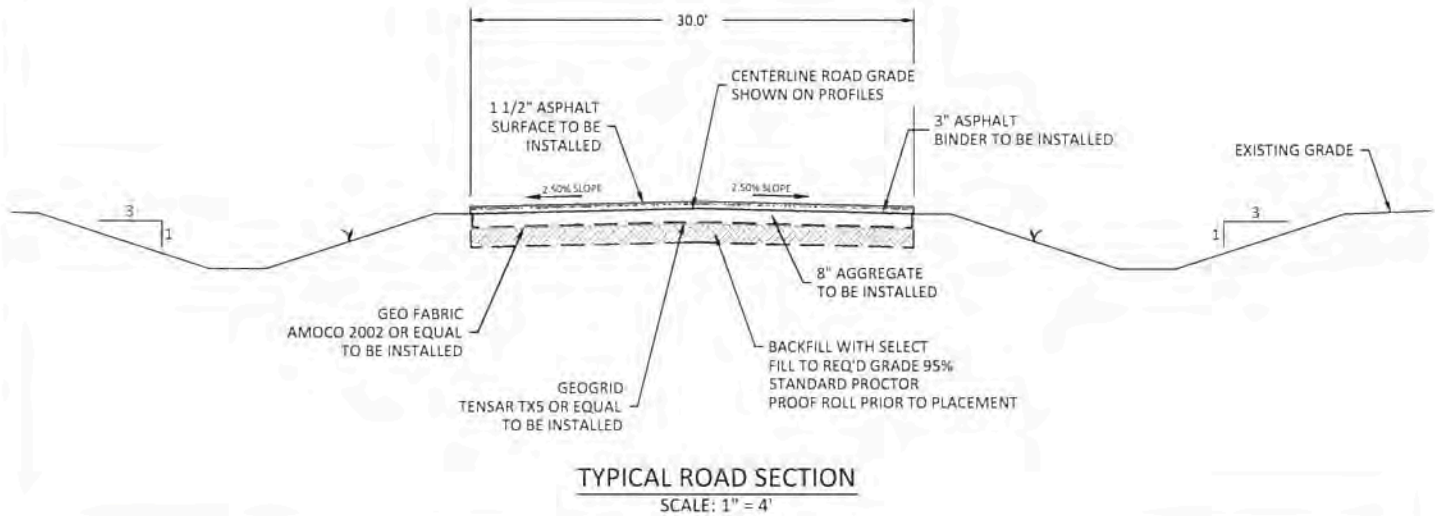
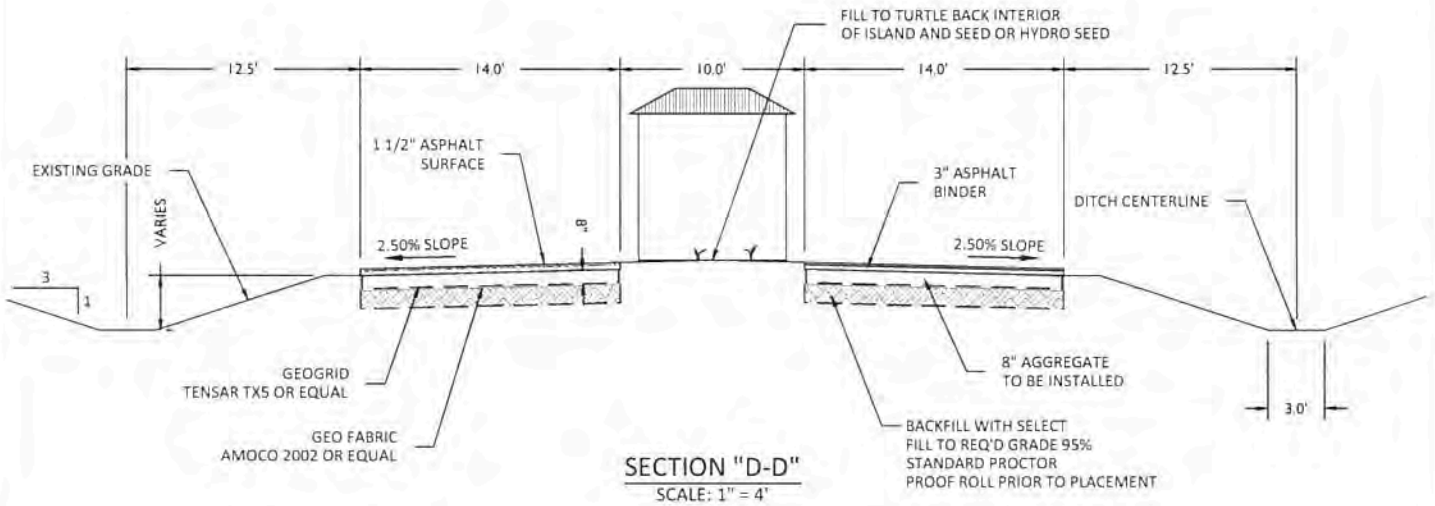
C.G.M.  
08/22/2016  
1" = 60'

**11**

NOTE: THESE DRAWINGS ARE TO BE USED EXCLUSIVELY FOR ACQUISITION OF REGULATORY PERMITS.

REVISED:

## CALCASIEU PARISH, LOUISIANA



THE CYPRESS GROUP  
4310 RYAN ST. STE 122  
LAKE CHARLES, LA  
OFFICE - 337.504.7755  
FAX - 337.504.7744

**MIKE BURDINE**  
PRATER RD. WEST TRACT

**SECTION "D-D" AND  
TYPICAL ROAD  
SECTION**

C.G.M.  
08/22/2016  
AS NOTED

**12**

NOTE: THESE DRAWINGS ARE TO BE USED EXCLUSIVELY FOR ACQUISITION OF REGULATORY PERMITS.

REVISED:

## CALCASIEU PARISH, LOUISIANA

### GENERAL NOTES:

1. APPROXIMATELY 14,430 CYD OF SELECT FILL MATERIAL FROM PERMITTED BORROW AREAS WITHIN CALCASIEU PARISH HAS BEEN INSTALLED WITHIN THE ALREADY IMPACTED AREAS.
2. APPROXIMATELY 650 TONS OF CRUSHED AGGREGATE TRAVELING SURFACE HAVE BEEN INSTALLED WITHIN THE ALREADY IMPACTED AREAS.
3. IT IS ANTICIPATED THAT APPROXIMATELY 94,100 CYD OF MATERIAL WILL BE EXCAVATED FROM THE PROJECT SITE WITHIN THE DETENTION PONDS AND DITCHES TO PROVIDE FOR DRAINAGE WITHIN THE PROPOSED SITE.
4. APPROXIMATELY 94,100 CYD OF MATERIAL WILL BE RELOCATED WITHIN THE LIMITS OF THE SITE FOR THE NECESSARY GRADING AND SHAPING WITHIN THE SITE. IT IS ANTICIPATED THAT OUTSIDE SELECT FILL MATERIAL UTILIZED FOR THE PROPOSED PROJECT WILL NOT EXCEED 5,000 CYD AND WILL BE SOURCED FROM APPROVED AND PERMITTED BORROW AREAS WITHIN CALCASIEU PARISH.
5. APPROXIMATELY 35,000 TONS OF CRUSHED AGGREGATE WILL BE UTILIZED FOR ROADWAY TRAVELING SURFACES WITHIN THE PROPOSED TEMPORARY WORKFORCE HOUSING FACILITY.
6. IN ORDER TO INSURE THE SAFETY OF ALL PARTIES INVOLVED, THE PERMITEE OR ITS AGENTS WILL CONTACT THE LOUISIANA DOTTIE SYSTEM (1-800-272-3020) A MINIMUM OF TWO (2) DAYS PRIOR TO THE COMMENCEMENT OF ANY ACTIVITY.



THE CYPRESS GROUP  
4310 RYAN ST, STE 122  
LAKE CHARLES, LA  
OFFICE - 337.504.7755  
FAX - 337.504.7744

**MIKE BURDINE**  
PRATER RD. WEST TRACT

### NOTES

C.G.M.  
08/22/2016  
N.T.S.

13