

JOINT PUBLIC NOTICE

July 20, 2015

United States Army
Corps of Engineers
New Orleans District
Regulatory Branch
Post Office Box 60267
New Orleans, Louisiana 70160-0267

State of Louisiana
Department of Environmental Quality
Water Quality Certification Section
Post Office Box 4313
Baton Rouge, Louisiana 70821-4313

(504) 862-2675
Project Manager
Jamie Crowe
Jamie.M.Crowe@usace.army.mil
Permit Application Number
MVN 2014-2632 CO

(225) 219-3225
Project Manager
Elizabeth Johnson
WQC Application Number
WQC 150715-01

Interested parties are hereby notified that a permit application has been received by the New Orleans District of the U.S. Army Corps of Engineers pursuant to: [X] Section 10 of the Rivers and Harbors Act of March 3, 1899 (30 Stat. 1151; 33 USC 403); and/or [X] Section 404 of the Clean Water Act (86 Stat. 816; 33 USC 1344).

Application has also been made to the Louisiana Department of Environmental Quality, Office of Environmental Services, for a Water Quality Certification (WQC) in accordance with statutory authority contained in LRS30:2047 A(3), and provisions of Section 401 of the Clean Water Act (P.L.95-17).

RAMP IMPROVEMENTS AND BARGE IN THE MISSISSIPPI RIVER IN EAST BATON ROUGE PARISH

NAME OF APPLICANT: Shamrock Marine, LLC, c/o Thompson Engineering, 2970 Cottage Hill Road, Suite 190, Mobile, Alabama 36606.

LOCATION OF WORK: Within the Mississippi River Basin, in the Lower Mississippi River – Baton Rouge hydrologic unit (HUC 08070100), in the Mississippi River, left descending bank, mile marker 229.3, near Baton Rouge, Louisiana, in East Baton Rouge Parish, as shown on the enclosed drawings.

CHARACTER OF WORK: The applicant has requested approval to improve and maintain an existing concrete ramp, and install and maintain a building and gravel parking lot. Ramp improvements include removing sediment from the ramp, and installing a base course and a concrete cap on the existing ramp. It is estimated that 10-20 cubic yards of sediment will be removed from the ramp and spread above the Ordinary High Water Mark in the Mississippi River batture. Approximately 96 cubic yards of concrete and 64 cubic yards of base material will be used for ramp

improvements. A 100'x30' spud barge will be anchored at the River's edge to load/unload supplies. The applicant also proposes to install a 16'x24' building and a 30'x60' gravel parking lot in uplands on the Mississippi River bature. Existing access ramps will be utilized for access. Approximately 0.1 acre of jurisdictional wetlands will be impacted by the proposed ramp improvements. The impacted wetlands are frequently inundated and are not vegetated. Thus, it is anticipated that no mitigation will be required for this activity. Should mitigation be required for unavoidable wetland impacts, the applicant proposes to purchase wetland credits from a Corps approved mitigation bank located in the watershed.

The comment period for the Department of the Army Permit and the Louisiana Department of Environmental Quality WQC will close **30 days** from the date of this joint public notice. Written comments, including suggestions for modifications or objections to the proposed work, stating reasons thereof, are being solicited from anyone having interest in this permit and/or this WQC request and must be mailed so as to be received before or by the last day of the comment period. Letters concerning the Corps of Engineers permit application must reference the applicant's name and the Permit Application Number, and be mailed to the Corps of Engineers at the address above, **ATTENTION: REGULATORY BRANCH** Letters concerning the Water Quality Certification must reference the applicant's name and the WQC Application number and be mailed to the Louisiana Department of Environmental Quality at the address above. The application for this proposed project is on file with the Louisiana Department of Environmental Quality and may be examined weekdays between 8:00 a.m. and 4:30 p.m. Copies may be obtained upon payment of costs of reproduction.

Corps of Engineers Permit Criteria

The decision whether to issue a permit will be based on an evaluation of the probable impacts, including cumulative impacts of the proposed activity on the public interest. That decision will reflect the national concern for both protection and utilization of important resources. The benefit which reasonably may be expected to accrue from the proposal must be balanced against its reasonably foreseeable detriments. All factors which may be relevant to the proposal will be considered including the cumulative effects thereof; among those are conservation, economics, aesthetics, general environmental concerns, wetlands, historic properties, fish and wildlife values, flood hazards, floodplain values, land use, navigation, shoreline erosion and accretion, recreation, water supply and conservation, water quality, energy needs, safety, food and fiber production, mineral needs, considerations of property ownership and, in general, the needs and welfare of the people.

The U.S. Army Corps of Engineers is soliciting comments from the public, federal, state, and local agencies and officials, Indian Tribes, and other interested parties in order to consider and evaluate the impacts of this proposed activity. Any comments received will be considered by the U.S. Army Corps of Engineers to determine whether to make, modify, condition, or deny a permit for this proposal. To make this decision, comments are used to assess impacts on endangered species, historic properties,

water quality, general environmental effects, and other public interest factors listed above. Comments are used in the preparation of an Environmental Assessment and/or an Environmental Impact Statement pursuant to the National Environmental Policy Act. Comments are also used to determine the need for a public hearing and to determine the overall public interest of the proposed activity.

The New Orleans District is unaware of properties listed on the National Register of Historic Places near the proposed work. The possibility exists that the proposed work may damage or destroy presently unknown archeological, scientific, prehistorical, historical sites, or data. Issuance of this public notice solicits input from the State Archeologist and State Historic Preservation Officer regarding potential impacts to cultural resources.

Our initial finding is that the proposed work would not affect any species, nor affect any habitat designated as critical to the survival and recovery of such species, listed as endangered by the U.S. Department of Commerce.

The New Orleans District has determined that the proposed project is located in waters known to be utilized by the pallid sturgeon (*Scaphirhynchus albus*) and determined that the proposed activity is not likely to adversely affect the species based on the Standard Local Operating Procedure for Endangered Species of Louisiana (SLOPES), dated October 22, 2014, between the U.S. Army Corps of Engineers and U.S. Fish and Wildlife Service, Ecological Services Office.

This notice initiates the Essential Fish Habitat (EFH) consultation requirements of the Magnuson-Stevens Fishery Conservation and Management Act. The applicant's proposal would result in the destruction or alteration of **N/A acres** of EFH utilized by various life stages of red drum and penaeid shrimp. Our initial determination is that the proposed action would not have a substantial adverse impact on EFH or federally managed fisheries in the Gulf of Mexico. Our final determination relative to project impacts and the need for mitigation measures is subject to review by and coordination with the National Marine Fisheries Service.

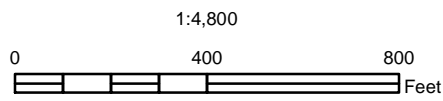
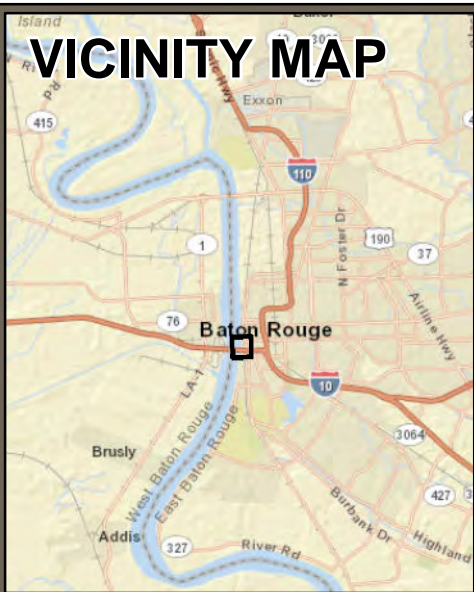
If the proposed work involves deposits of dredged or fill material into navigable waters, the evaluation of the probable impacts will include the application of guidelines established by the Administrator of the Environmental Protection Agency. Also, a certification that the proposed activity will not violate applicable water quality standards will be required from the Department of Environmental Quality, Office of Environmental Services, before a permit is issued.

Any person may request, in writing, within the comment period specified in this notice, that a public hearing be held to consider this application. Requests for public hearings shall state, with particularity, the reasons for holding a public hearing. You are requested to communicate the information contained in this notice to any other parties whom you deem likely to have interest in the matter.

You are requested to communicate the information contained in this notice to any other parties whom you deem likely to have interest in the matter.

John M. Herman
Chief, Central Evaluation Section
Regulatory Branch

Enclosure



1:4,800
1 inch = 400 feet



Service Layer Credits: Sources: Esri, DeLorme, NAVTEQ, USGS, Intermap, iPC, NRCAN, Esri Japan, METI, Esri China (Hong Kong), Esri (Thailand), TomTom, 2013
Source: Esri, i-cubed, USDA, USGS, AEX, GeoEye, Getmapping, Aerogrid, IGN, IGP, and the GIS User Community - IMAGERY DATE: March 2010, 0.3M Resolution

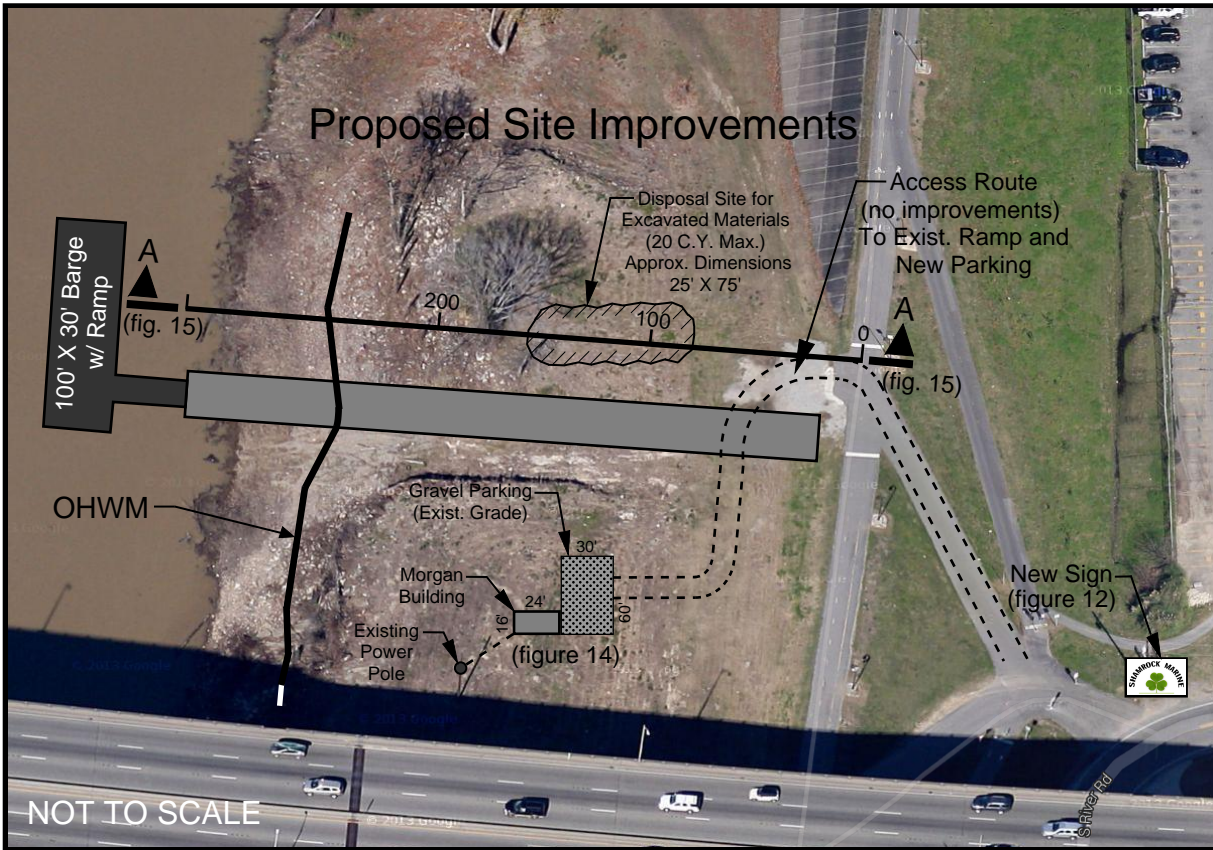
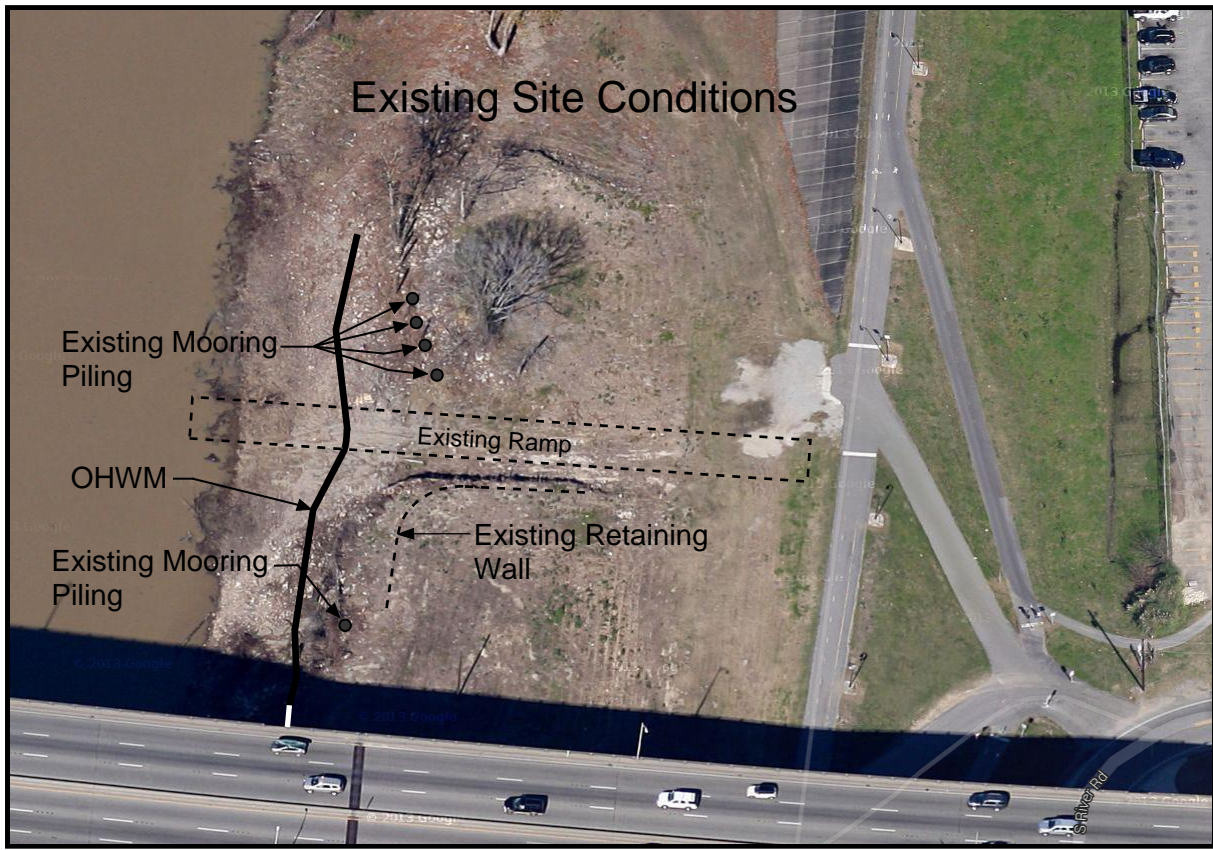
SHAMROCK MARINE, LLC
USACE LEVEE BATTURE PROJECT
EAST BANK MISSISSIPPI RIVER
AT INTERSTATE HIGHWAY 10 CROSSING
EAST BATON ROUGE PARISH, LOUISIANA



AERIAL PHOTOGRAPH
AND VICINITY MAP
FIGURE 1

PROJECT NO.:
14-1101-0028

DATE:
FEBRUARY 2014



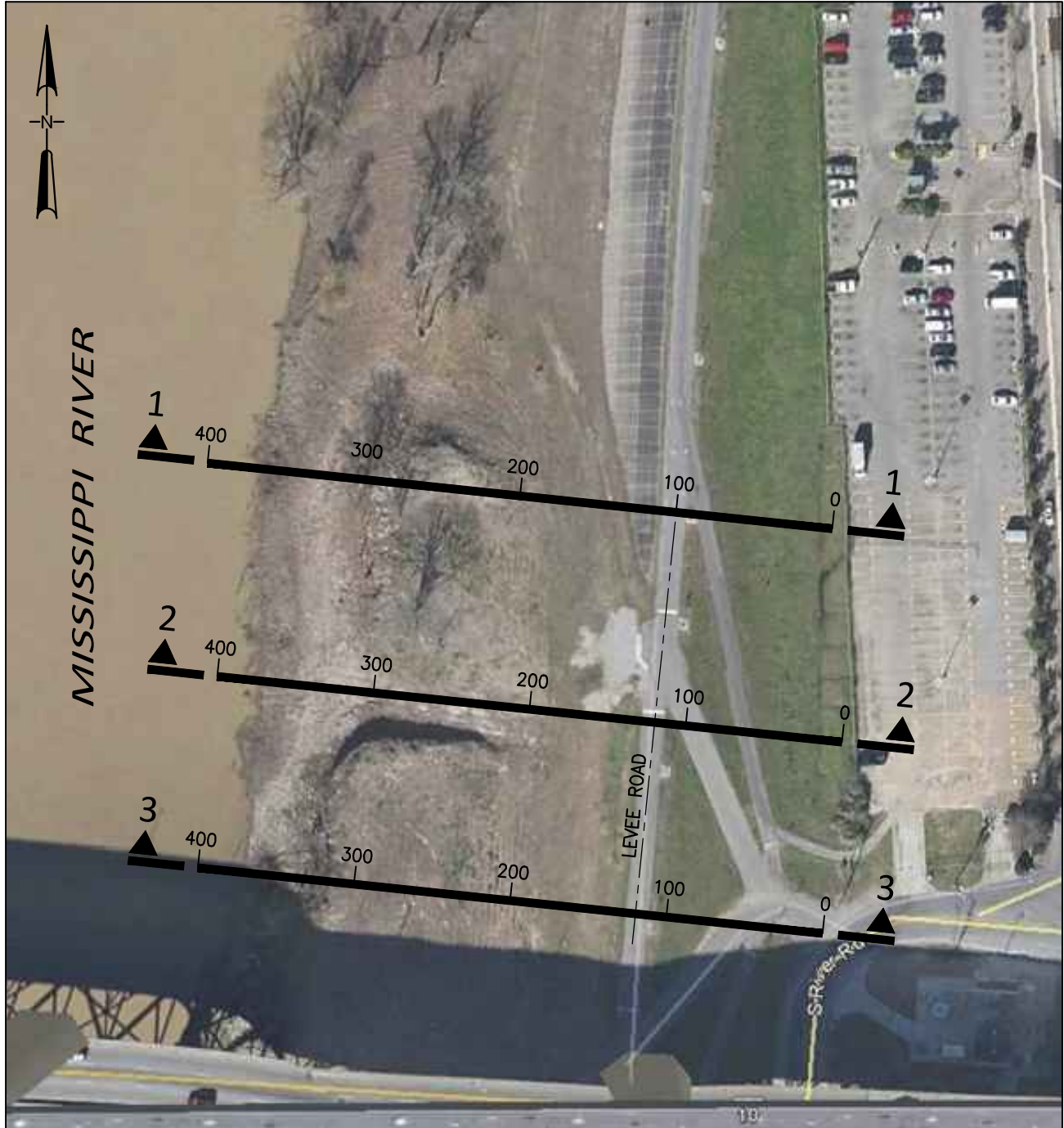
SHAMROCK MARINE, LLC
 USACE LEVEE BATTURE PROJECT
 EAST BANK MISSISSIPPI RIVER
 AT INTERSTATE HIGHWAY 10 CROSSING
 EAST BATON ROUGE PARISH, LOUISIANA



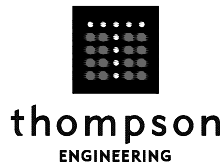
CURRENT AND PROPOSED SITE
 FIGURE 2

PROJECT NO.:
 14-1101-0028

DATE:
 FEBRUARY 2014



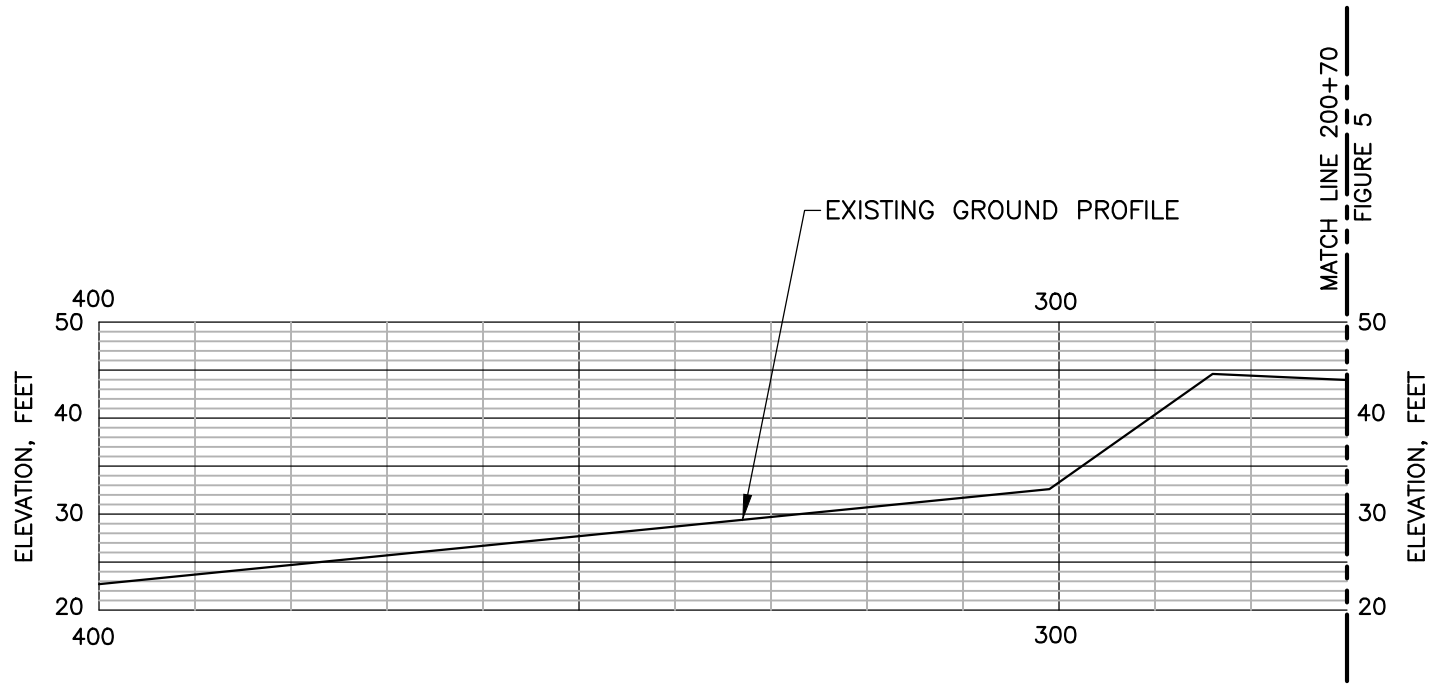
SHAMROCK MARINE, LLC
 USACE LEVEE BATTURE PROJECT
 EAST BANK MISSISSIPPI RIVER
 AT INTERSTATE HIGHWAY 10 CROSSING
 EAST BATON ROUGE PARISH, LOUISIANA



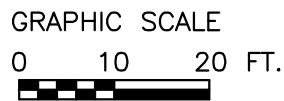
CROSS SECTIONS
 FIGURE 3

PROJECT NO:
 14-1101-0028

DATE:
 MAY, 2014



PROFILE SECTION 1



NOTE: ELEVATIONS ARE APPROXIMATE,
ESTIMATED ACCURACY IS ± 1 FT.

SHAMROCK MARINE, LLC
USACE LEVEE BATTURE PROJECT
EAST BANK MISSISSIPPI RIVER
AT INTERSTATE HIGHWAY 10 CROSSING
EAST BATON ROUGE PARISH, LOUISIANA

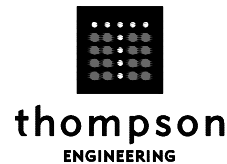
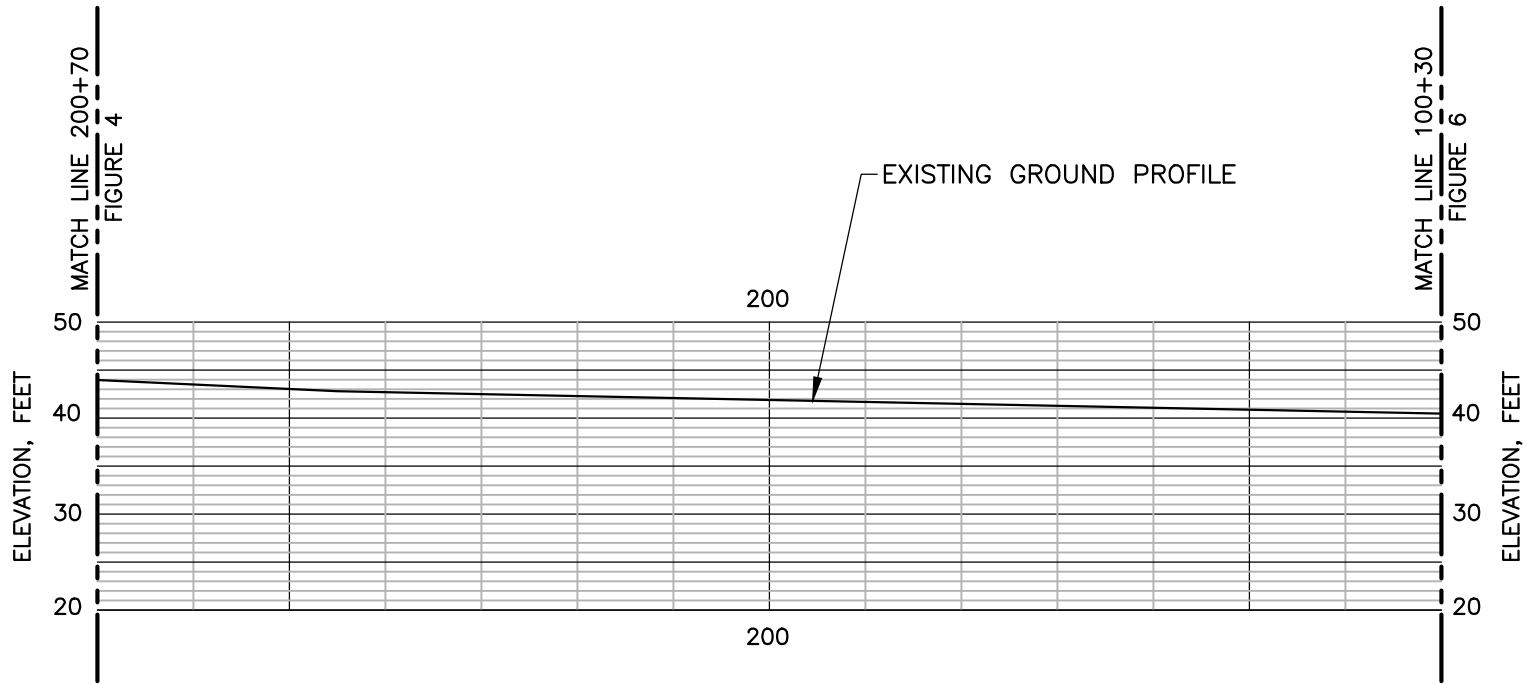


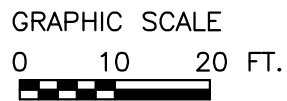
FIGURE 4

PROJECT NO:
14-1101-0028

DATE:
AUGUST, 2014



PROFILE SECTION 1



NOTE: ELEVATIONS ARE APPROXIMATE,
 ESTIMATED ACCURACY IS ± 1 FT.

SHAMROCK MARINE, LLC
 USACE LEVEE BATTURE PROJECT
 EAST BANK MISSISSIPPI RIVER
 AT INTERSTATE HIGHWAY 10 CROSSING
 EAST BATON ROUGE PARISH, LOUISIANA

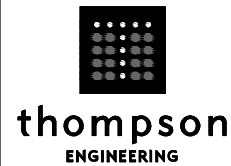
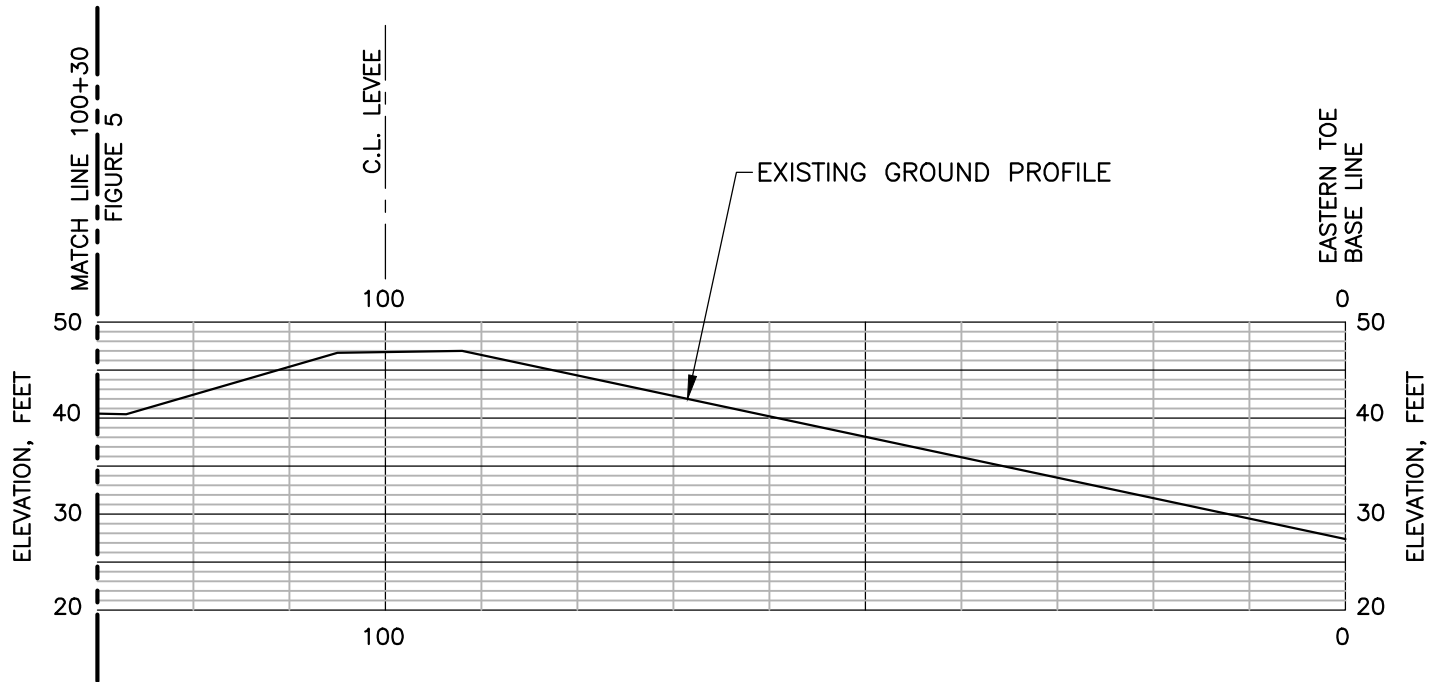


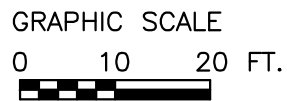
FIGURE 5

PROJECT NO: 14-1101-0028

DATE: AUGUST, 2014



PROFILE SECTION 1



NOTE: ELEVATIONS ARE APPROXIMATE,
ESTIMATED ACCURACY IS ± 1 FT.

SHAMROCK MARINE, LLC
USACE LEVEE BATTURE PROJECT
EAST BANK MISSISSIPPI RIVER
AT INTERSTATE HIGHWAY 10 CROSSING
EAST BATON ROUGE PARISH, LOUISIANA

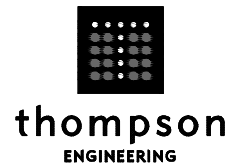
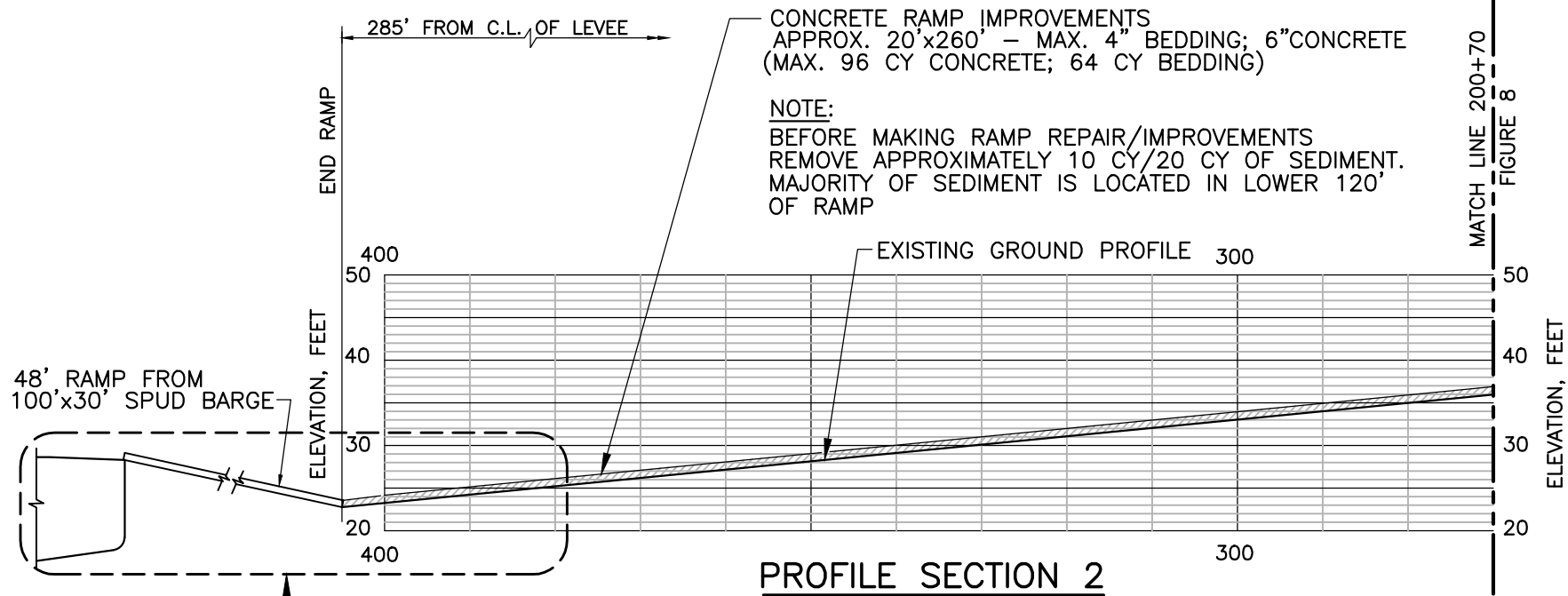


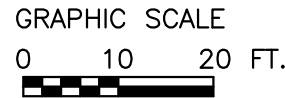
FIGURE 6

PROJECT NO:
14-1101-0028

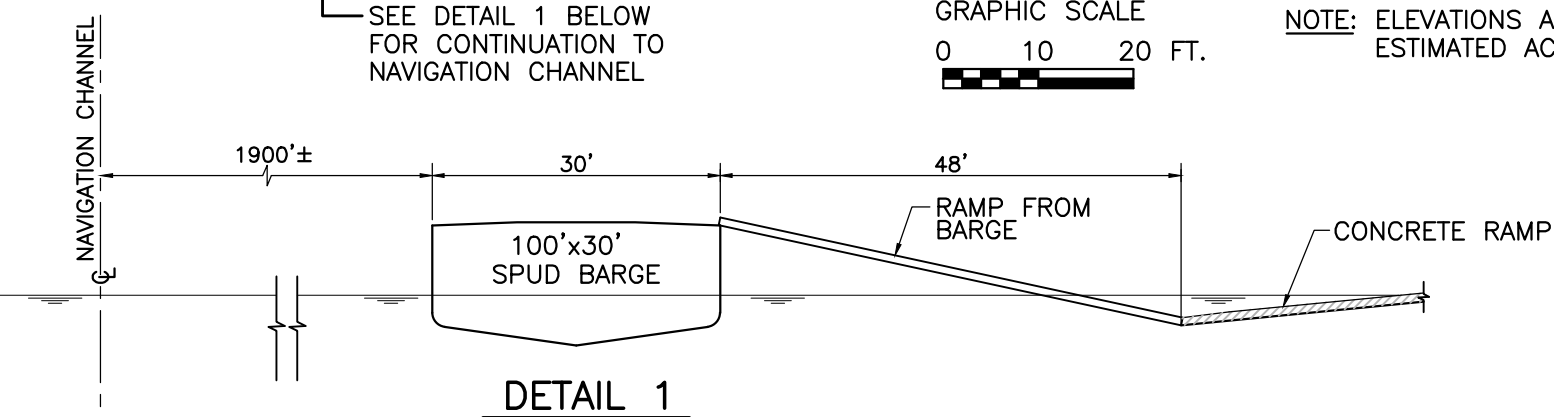
DATE:
AUGUST, 2014



PROFILE SECTION 2



NOTE: ELEVATIONS ARE APPROXIMATE, ESTIMATED ACCURACY IS ±1 FT.



DETAIL 1

SHAMROCK MARINE, LLC
 USACE LEVEE BATTURE PROJECT
 EAST BANK MISSISSIPPI RIVER
 AT INTERSTATE HIGHWAY 10 CROSSING
 EAST BATON ROUGE PARISH, LOUISIANA

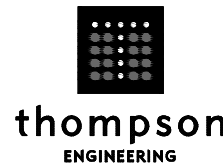
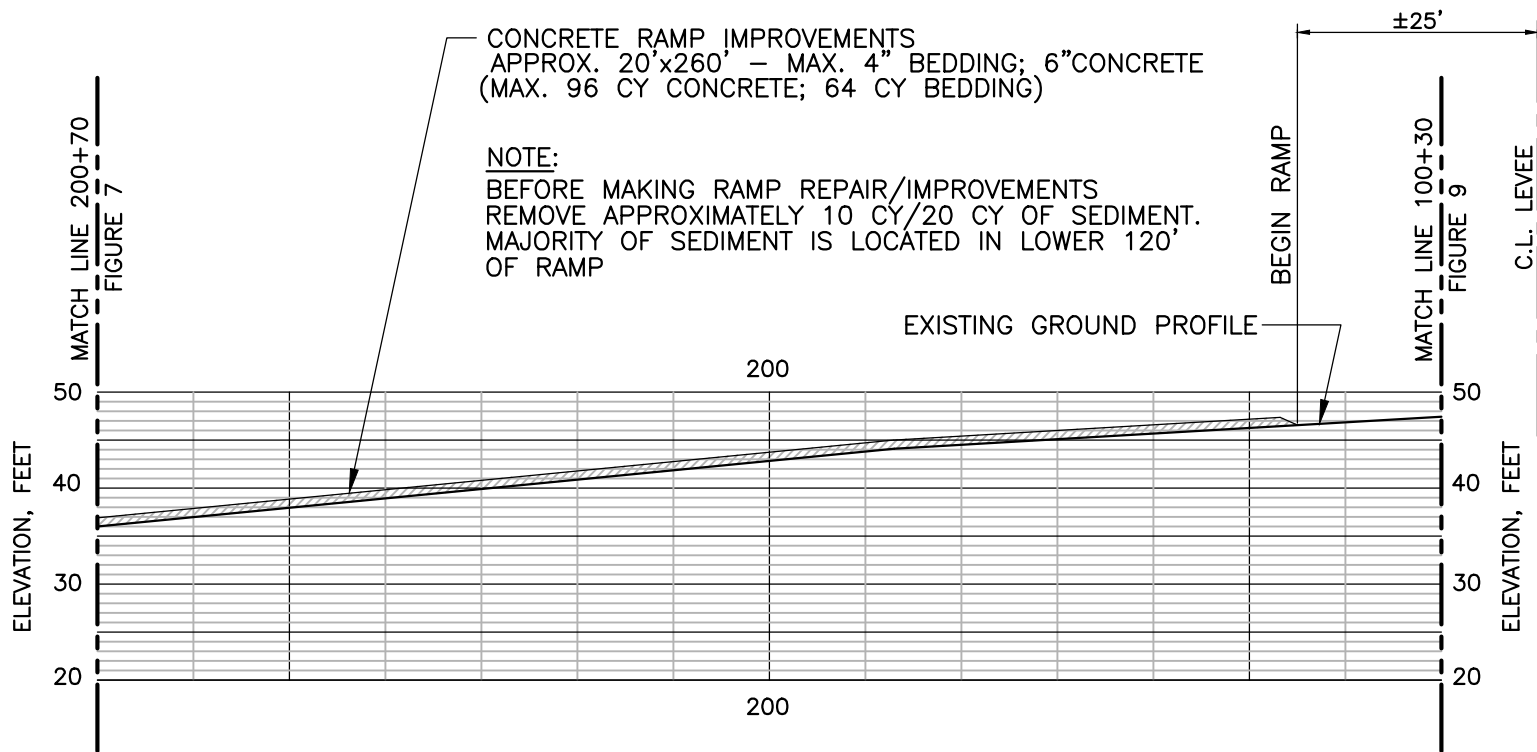


FIGURE 7

PROJECT NO:
14-1101-0028

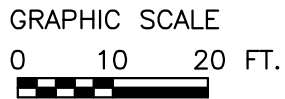
DATE:
AUGUST, 2014



CONCRETE RAMP IMPROVEMENTS
 APPROX. 20'x260' - MAX. 4" BEDDING; 6" CONCRETE
 (MAX. 96 CY CONCRETE; 64 CY BEDDING)

NOTE:
 BEFORE MAKING RAMP REPAIR/IMPROVEMENTS
 REMOVE APPROXIMATELY 10 CY/20 CY OF SEDIMENT.
 MAJORITY OF SEDIMENT IS LOCATED IN LOWER 120'
 OF RAMP

PROFILE SECTION 2



NOTE: ELEVATIONS ARE APPROXIMATE,
 ESTIMATED ACCURACY IS ±1 FT.

SHAMROCK MARINE, LLC
 USACE LEVEE BATTURE PROJECT
 EAST BANK MISSISSIPPI RIVER
 AT INTERSTATE HIGHWAY 10 CROSSING
 EAST BATON ROUGE PARISH, LOUISIANA

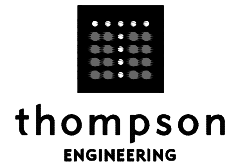
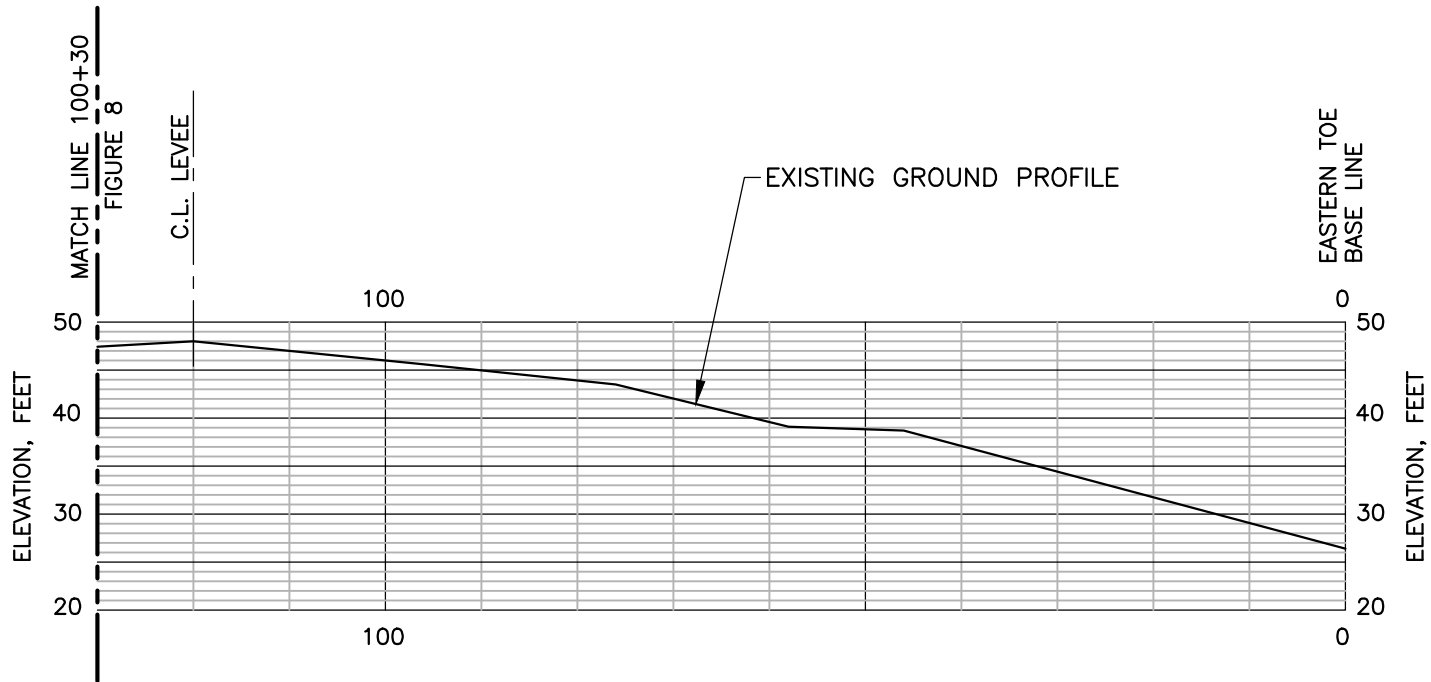


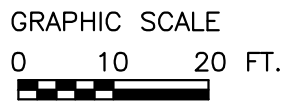
FIGURE 8

PROJECT NO: 14-1101-0028

DATE: AUGUST, 2014



PROFILE SECTION 2



NOTE: ELEVATIONS ARE APPROXIMATE,
ESTIMATED ACCURACY IS ± 1 FT.

SHAMROCK MARINE, LLC
USACE LEVEE BATTURE PROJECT
EAST BANK MISSISSIPPI RIVER
AT INTERSTATE HIGHWAY 10 CROSSING
EAST BATON ROUGE PARISH, LOUISIANA

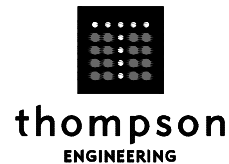
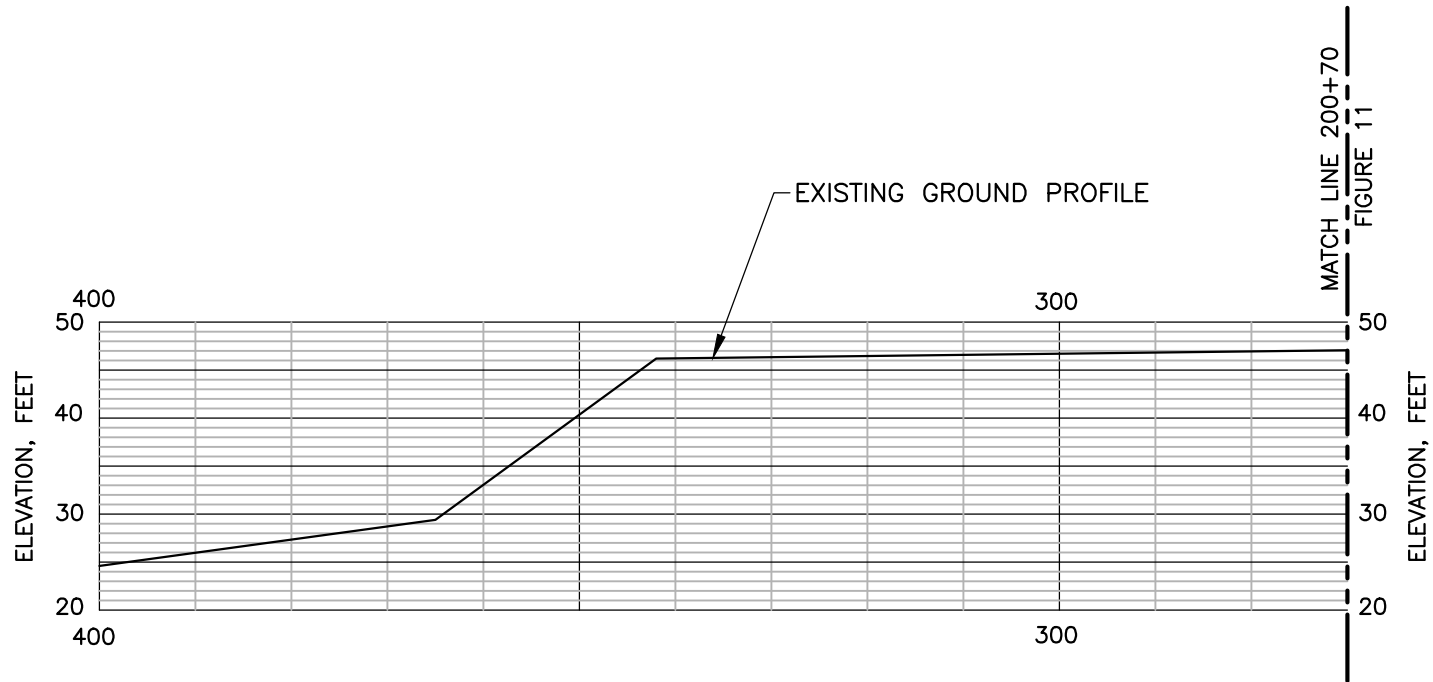


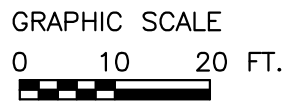
FIGURE 9

PROJECT NO:
14-1101-0028

DATE:
AUGUST, 2014



PROFILE SECTION 3



NOTE: ELEVATIONS ARE APPROXIMATE,
 ESTIMATED ACCURACY IS ± 1 FT.

SHAMROCK MARINE, LLC
 USACE LEVEE BATTURE PROJECT
 EAST BANK MISSISSIPPI RIVER
 AT INTERSTATE HIGHWAY 10 CROSSING
 EAST BATON ROUGE PARISH, LOUISIANA

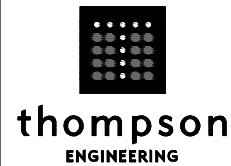
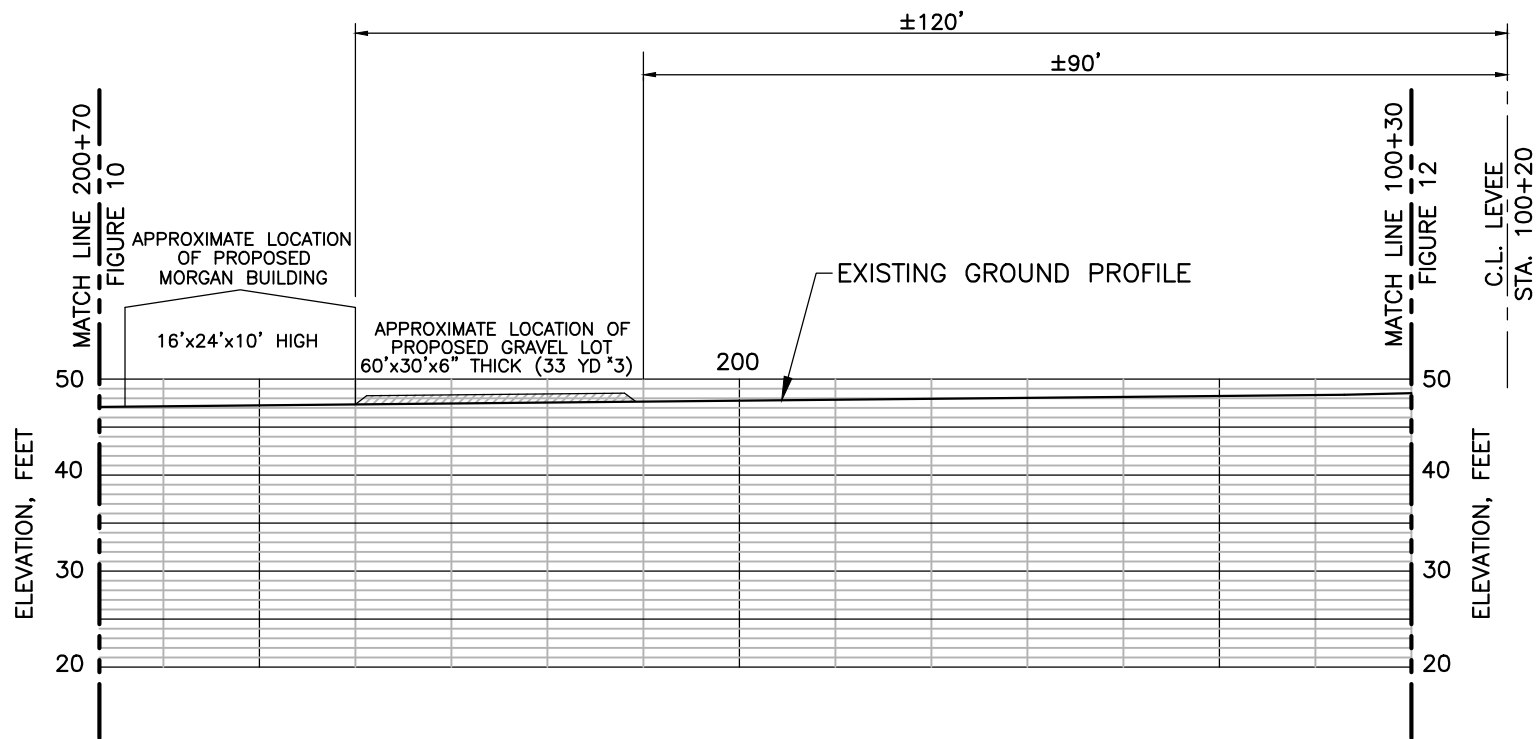


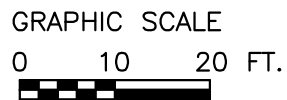
FIGURE 10

PROJECT NO:
 14-1101-0028

DATE:
 AUGUST, 2014



PROFILE SECTION 3



NOTE: ELEVATIONS ARE APPROXIMATE,
 ESTIMATED ACCURACY IS ± 1 FT.

SHAMROCK MARINE, LLC
 USACE LEVEE BATTURE PROJECT
 EAST BANK MISSISSIPPI RIVER
 AT INTERSTATE HIGHWAY 10 CROSSING
 EAST BATON ROUGE PARISH, LOUISIANA

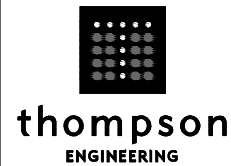
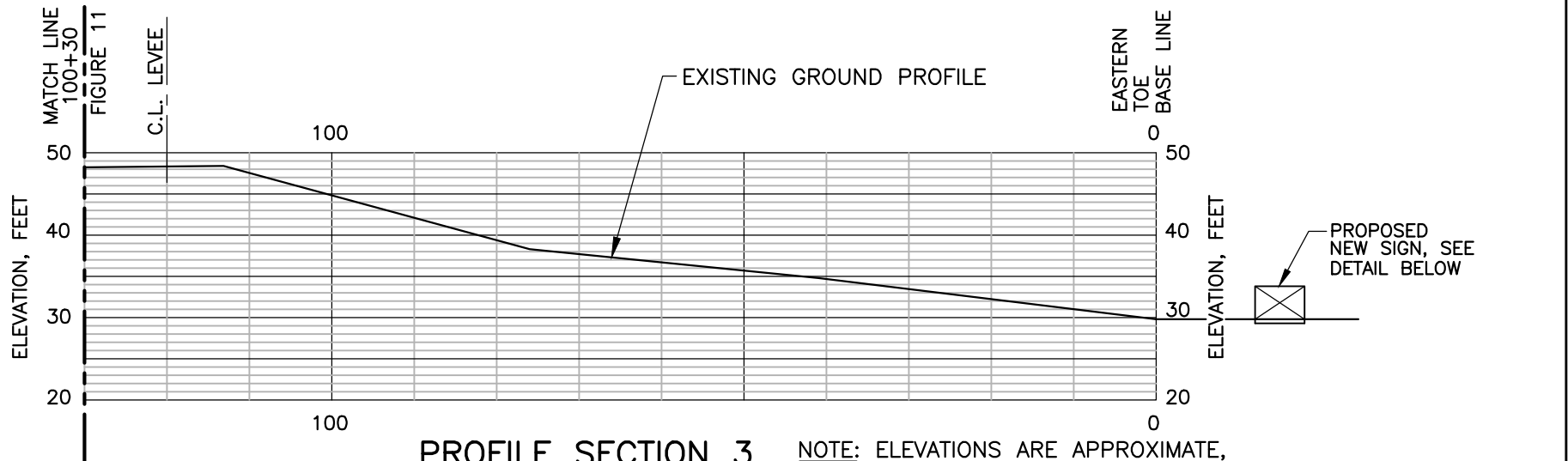


FIGURE 11

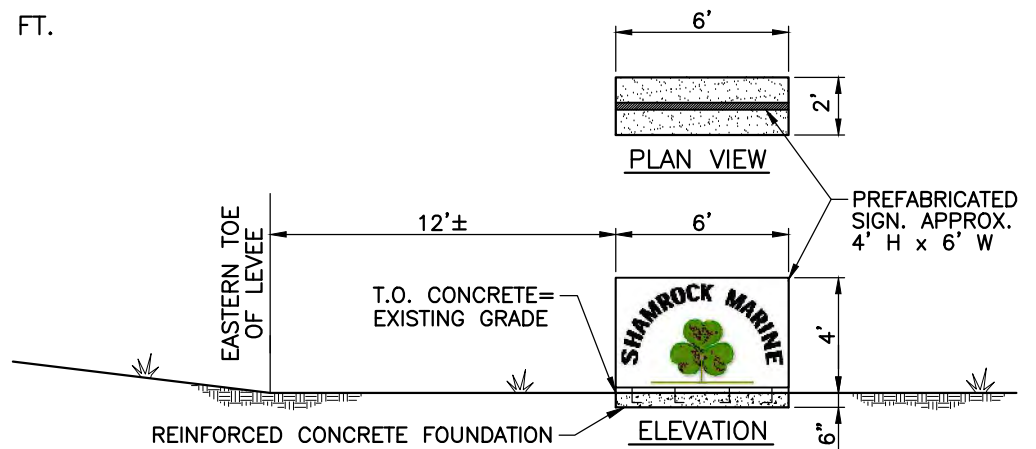
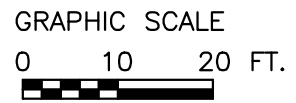
PROJECT NO:
 14-1101-0028

DATE:
 AUGUST, 2014



PROFILE SECTION 3

NOTE: ELEVATIONS ARE APPROXIMATE, ESTIMATED ACCURACY IS ±1 FT.



SIGN DETAIL
NOT TO SCALE

SHAMROCK MARINE, LLC
USACE LEVEE BATTURE PROJECT
EAST BANK MISSISSIPPI RIVER
AT INTERSTATE HIGHWAY 10 CROSSING
EAST BATON ROUGE PARISH, LOUISIANA

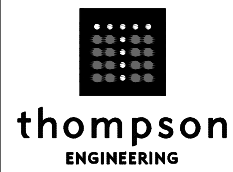
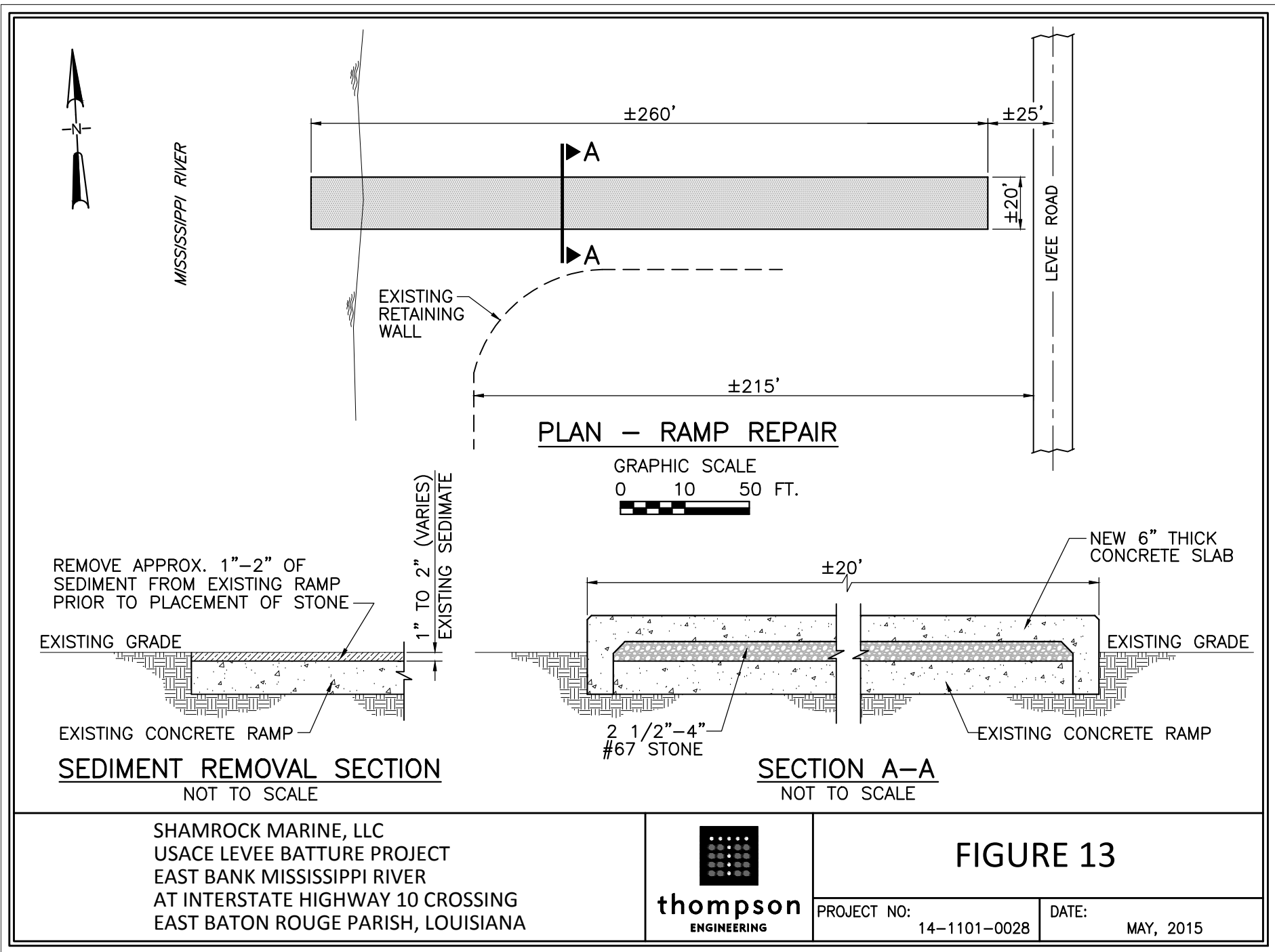


FIGURE 12

PROJECT NO: 14-1101-0028
DATE: AUGUST, 2014



SHAMROCK MARINE, LLC
 USACE LEVEE BATTURE PROJECT
 EAST BANK MISSISSIPPI RIVER
 AT INTERSTATE HIGHWAY 10 CROSSING
 EAST BATON ROUGE PARISH, LOUISIANA

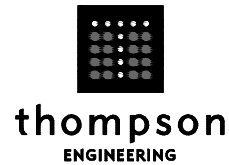
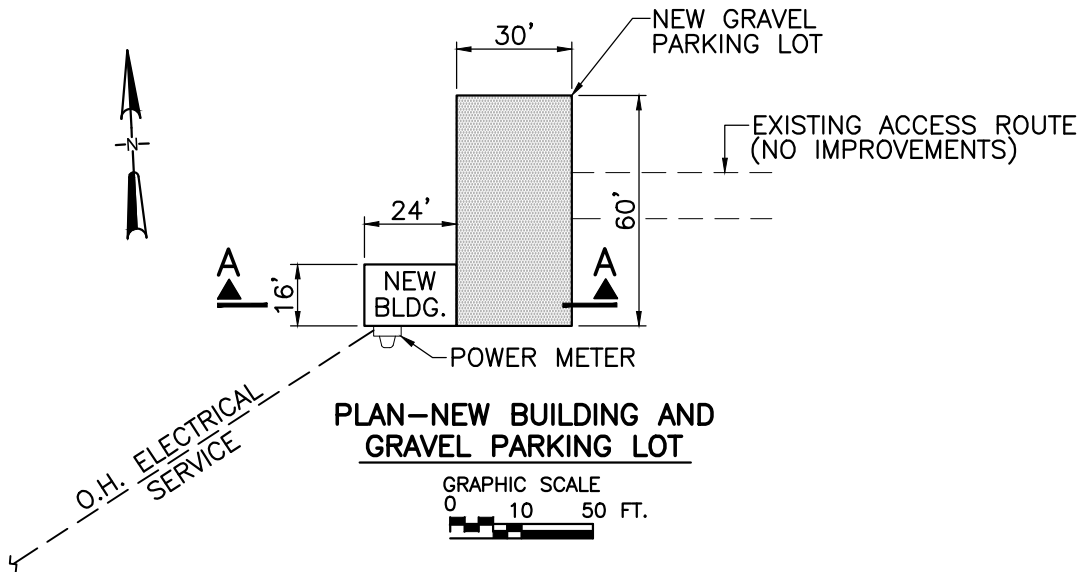


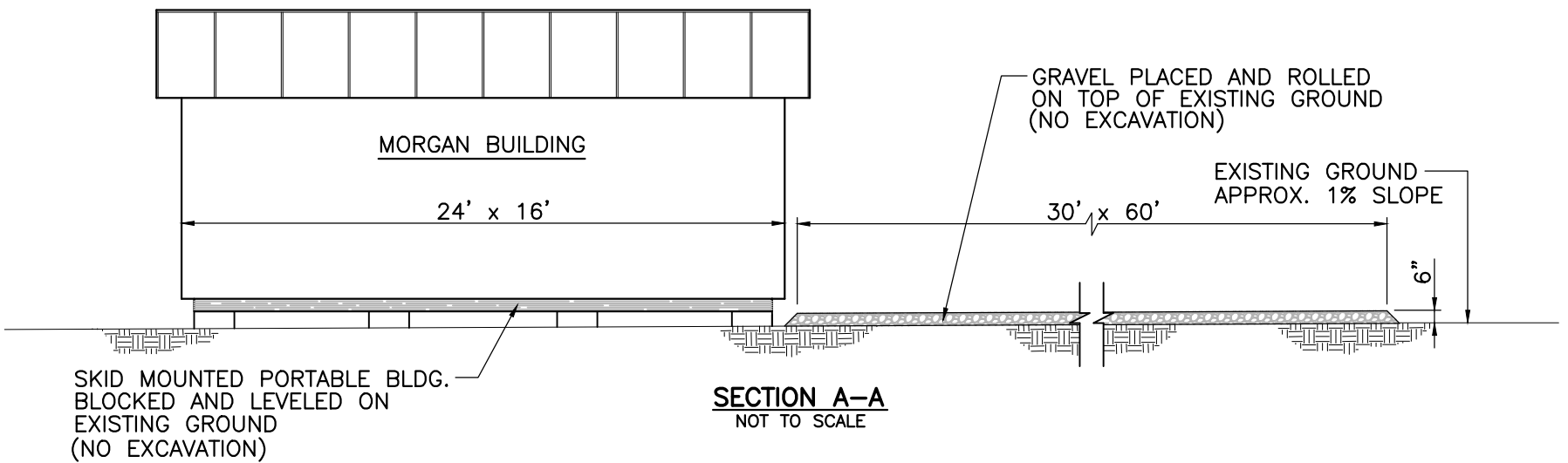
FIGURE 13

PROJECT NO:
14-1101-0028

DATE:
MAY, 2015



- NOTES:**
1. PURPOSE OF MORGAN BUILDING IS TO SERVE AS UTILITY/STORAGE BUILDING AND OCCASIONAL OFFICE SPACE. MINIMAL ELECTRICAL SERVICE REQUIRED. NO WATER AND SEWER.
 2. ELECTRICAL SERVICE TO BE PROVIDED BY ENTERGY CORP. FROM EXISTING POWER POLE.
ENTERGY POC: MR. KIRK KEES
ENTERGY BATON ROUGE ENGINEERING
DEPARTMENT 225-354-3066



SHAMROCK MARINE, LLC
USACE LEVEE BATTURE PROJECT
EAST BANK MISSISSIPPI RIVER
AT INTERSTATE HIGHWAY 10 CROSSING
EAST BATON ROUGE PARISH, LOUISIANA

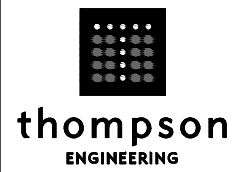
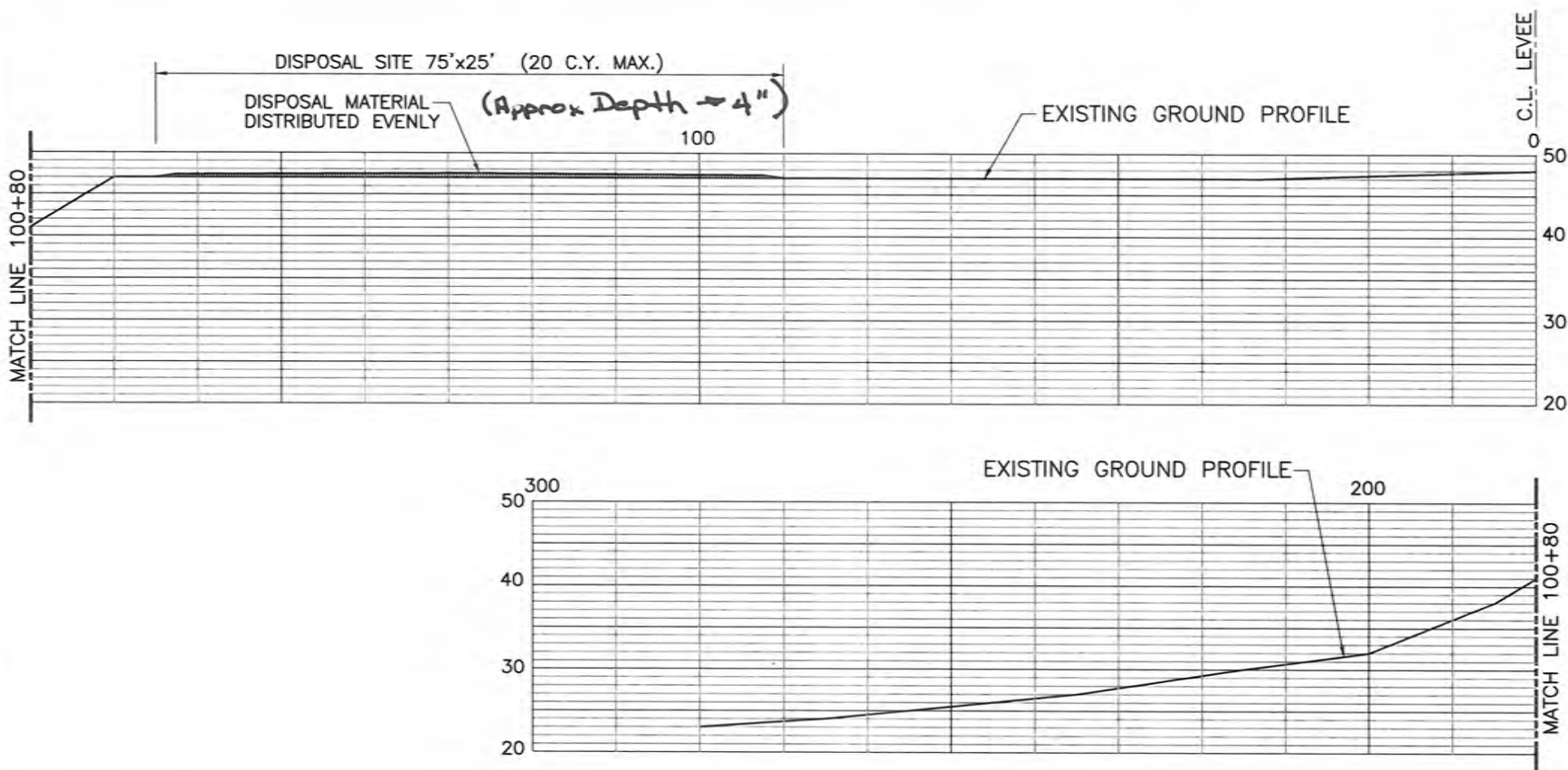
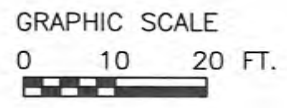


FIGURE 14

PROJECT NO: 14-1101-0028	DATE: MAY, 2015
-----------------------------	--------------------



PROFILE SECTION A-A
(TAKEN ON FIGURE 2)



NOTE: ELEVATIONS ARE APPROXIMATE

SHAMROCK MARINE, LLC
 USACE LEVEE BATTURE PROJECT
 EAST BANK MISSISSIPPI RIVER
 AT INTERSTATE HIGHWAY 10 CROSSING
 EAST BATON ROUGE PARISH, LOUISIANA



FIGURE 15

PROJECT NO: 14-1101-0028

DATE: JUNE, 2014