

Center of Site:
30.507538
-91.472002

Site

Figure 1
VICINITY MAP
KIMBALL RANCH MITIGATION BANK
KIMBALL RANCH ROAD, PORT ALLEN, LOUISIANA
Kimball Properties, LLC

RE: USGS 7.5 Minute Topographic Maps.



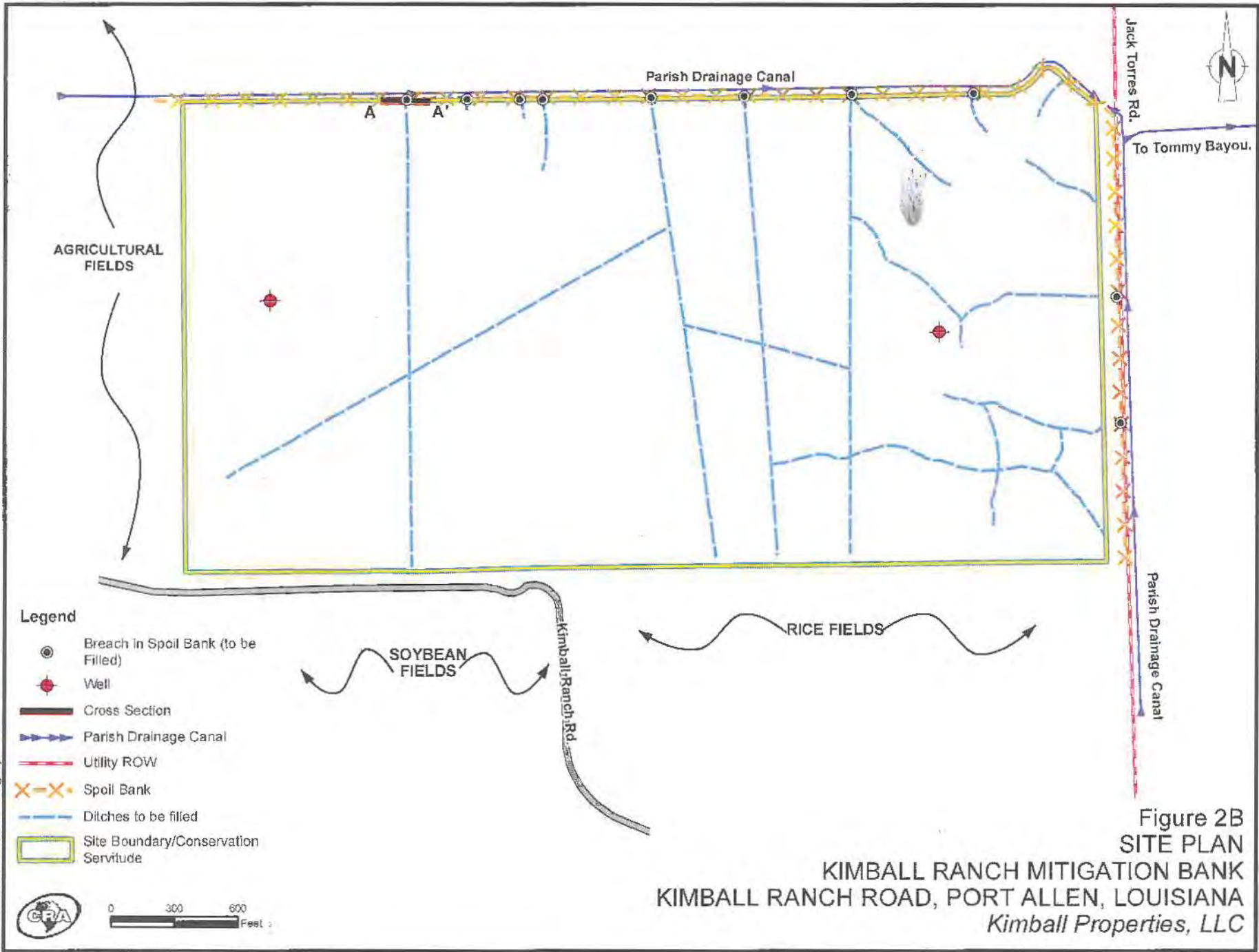


Figure 2B
 SITE PLAN
 KIMBALL RANCH MITIGATION BANK
 KIMBALL RANCH ROAD, PORT ALLEN, LOUISIANA
 Kimball Properties, LLC

RE: ESRI 2010 World Imagery.

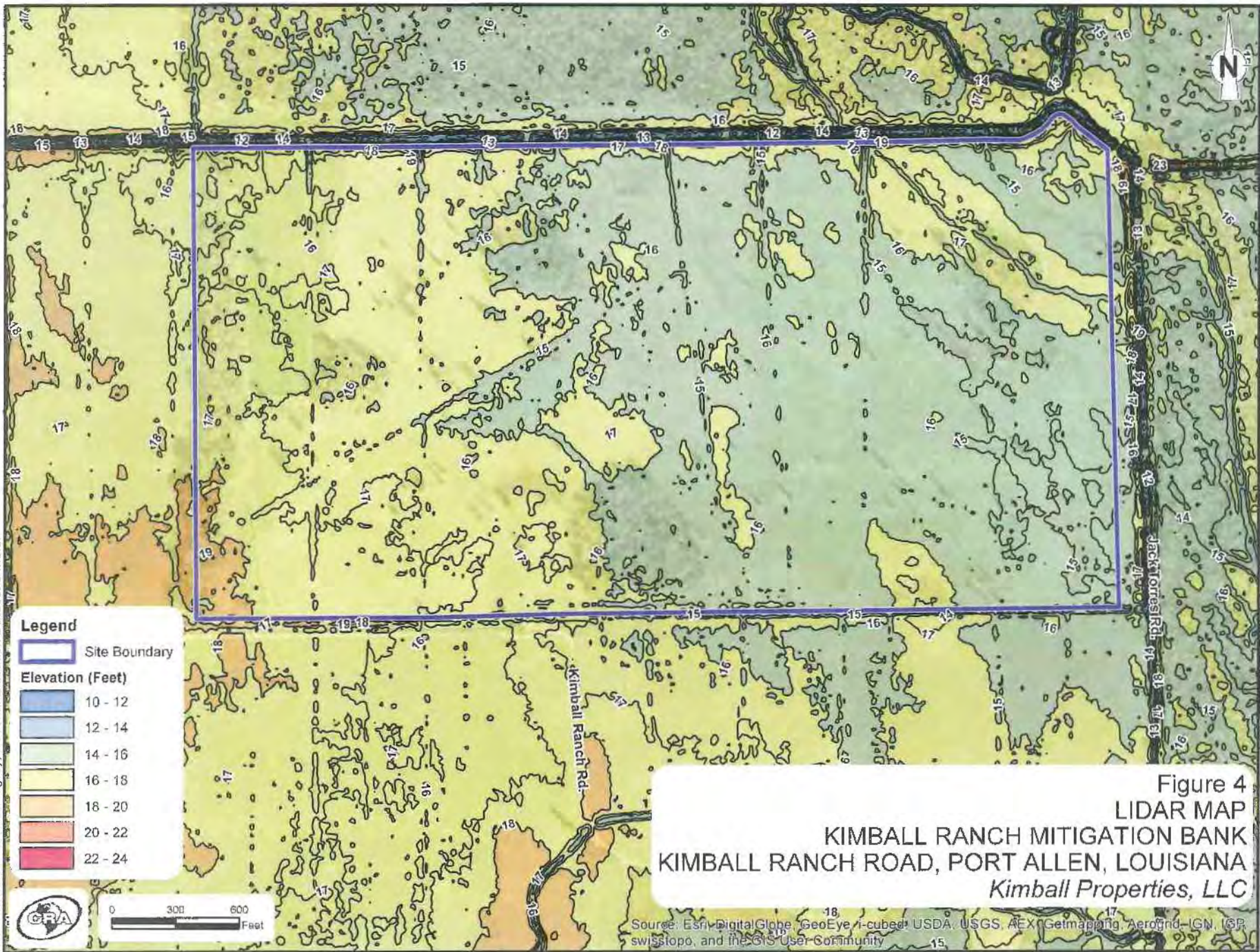


Figure 3
SOIL SURVEY MAP
KIMBALL RANCH MITIGATION BANK
KIMBALL RANCH ROAD, PORT ALLEN, LOUISIANA
Kimball Properties, LLC

Source: Esri, DigitalGlobe, GeoEye, Earthstar Geographics, CNES/Airbus DS, USDA, USGS, AEX, Getmapping, Aerogrid, IGN, IGP, swisstopo, and the GIS User Community

 0 300 600 Feet

RE: ESRI 2010 World Imagery, National Elevation Dataset 3 Meter



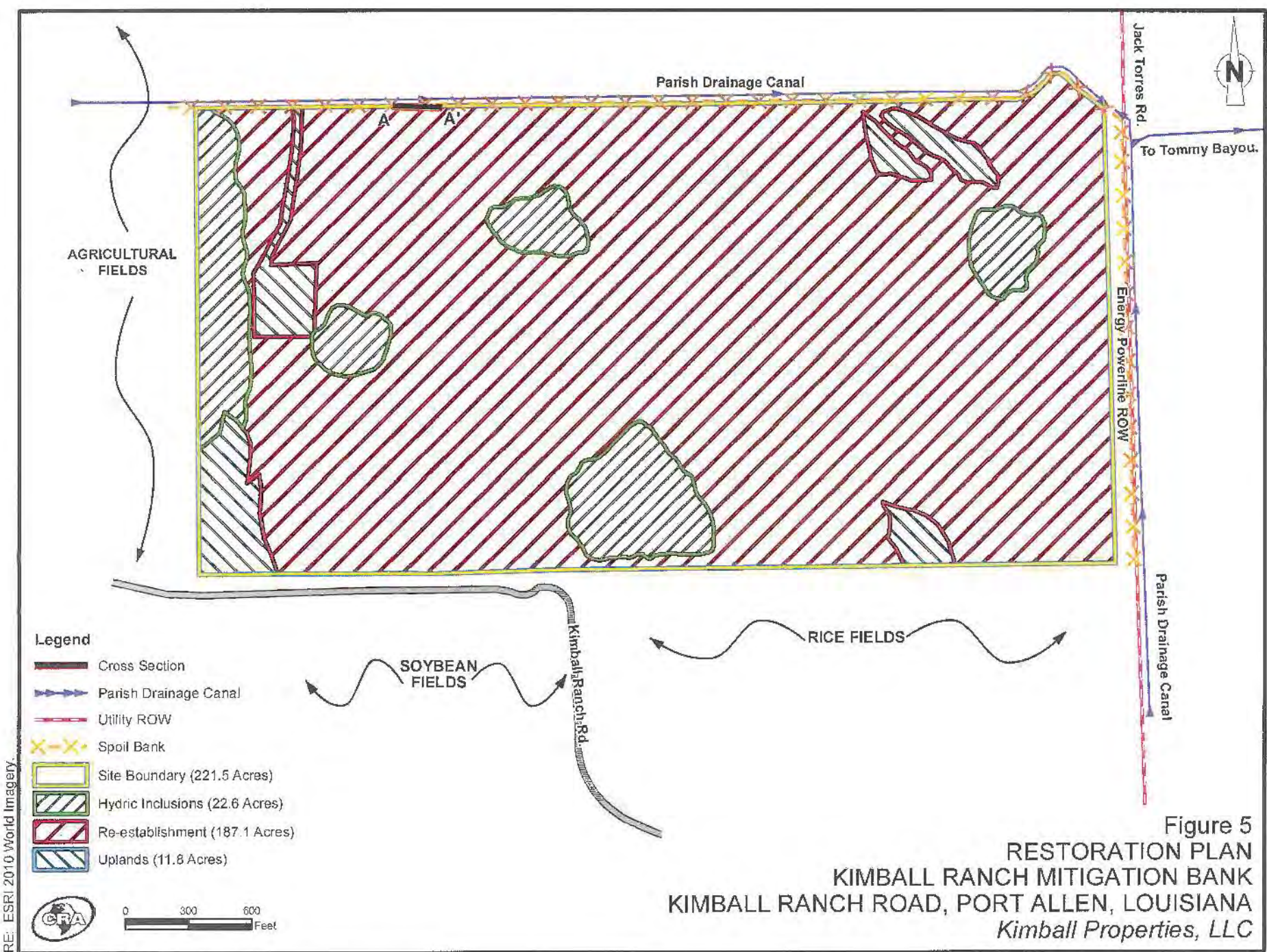
Legend

- Site Boundary
- Elevation (Feet)
- 10 - 12
- 12 - 14
- 14 - 16
- 16 - 18
- 18 - 20
- 20 - 22
- 22 - 24

Figure 4
LIDAR MAP
KIMBALL RANCH MITIGATION BANK
KIMBALL RANCH ROAD, PORT ALLEN, LOUISIANA
Kimball Properties, LLC

Source: Esri, DigitalGlobe, GeoEye, i-cubed, USDA, USGS, AEX, Getmapping, Aerogrid, IGN, IPR, swisstopo, and the GIS User Community

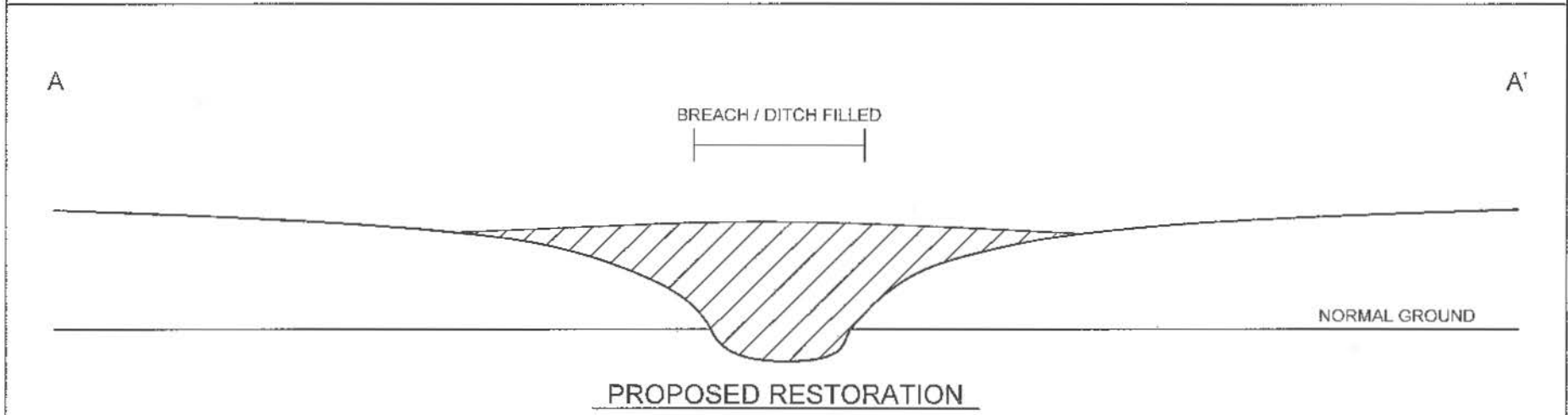
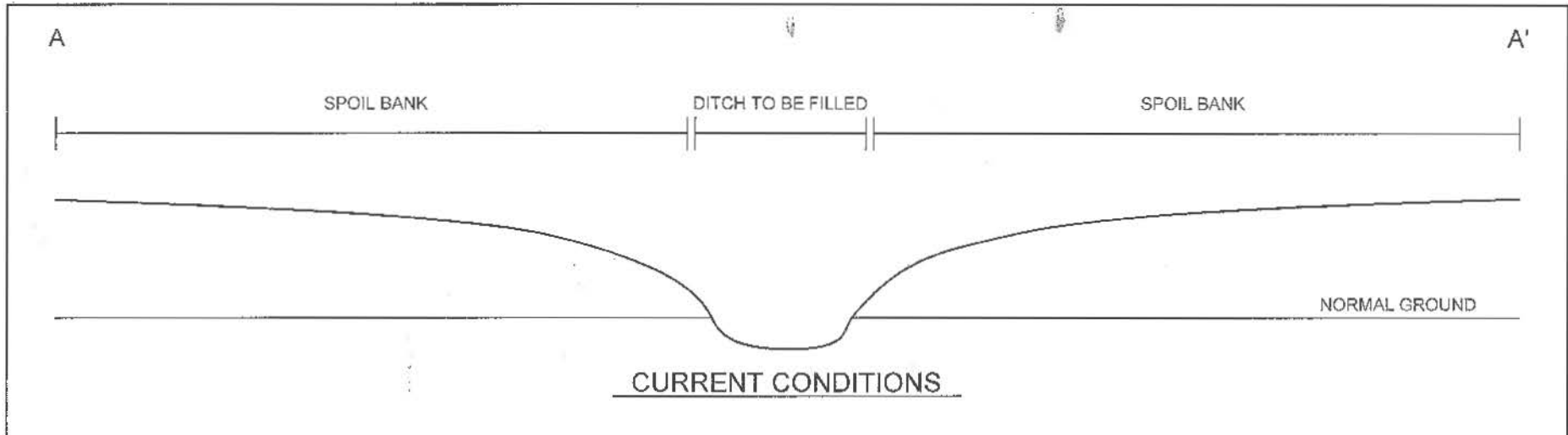




- Legend**
- Cross Section
 - Parish Drainage Canal
 - Utility ROW
 - Spoil Bank
 - Site Boundary (221.5 Acres)
 - Hydric Inclusions (22.6 Acres)
 - Re-establishment (187.1 Acres)
 - Uplands (11.8 Acres)

Figure 5
RESTORATION PLAN
KIMBALL RANCH MITIGATION BANK
KIMBALL RANCH ROAD, PORT ALLEN, LOUISIANA
Kimball Properties, LLC

RE: ESRI 2010 World Imagery



NOTE: BREACHES AND DITCHES WILL BE FILLED TO NATURAL ELEVATIONS AT LEAST 20 FEET FROM THE CANAL USING SOIL FROM THE EXISTING SPOIL BANK.

Figure 6
 TYPICAL CROSS SECTION A-A'
 KIMBALL RANCH MITIGATION BANK
 KIMBALL RANCH ROAD, PORT ALLEN, LOUISIANA
Kimball Properties, LLC



NOT TO SCALE

RE: Hydrologic Units Data obtained from USDA/NRCS - National Geospatial Management Center & ESRI 2010 World Imagery.



TABLE 1

**BASELINE CONDITIONS AND PROPOSED MITIGATION HABITAT TYPES
PROSPECTUS FOR THE PROPOSED KIMBALL RANCH MITIGATION BANK
WEST BATON ROUGE PARISH, LOUISIANA**

<i>Baseline Condition</i>	<i>Proposed Mitigation and Habitat Types</i>	<i>Acres</i>
Wetland Pasture	Type 2 Bottomland Hardwood Re-establishment	187.1
Wetland Forest	Hydric Inclusion	22.6
Upland	Upland	11.8

Total Inclusion Acreage	22.6
Total Restoration and Enhancement Credit Acreage	187.1
Total Acreage	221.5

TABLE 2

SELECTED TREE SPECIES FOR RE-ESTABLISHMENT
 PROSPECTUS FOR THE PROPOSED KIMBALL RANCH MITIGATION BANK
 WEST BATON ROUGE PARISH, LOUISIANA

<i>Common name</i>	<i>Scientific Name</i>
Willow oak	<i>Quercus phellos</i>
Nuttall oak	<i>Quercus nuttalli</i>
Overcup oak	<i>Quercus lyrata</i>
Cherrybark oak	<i>Quercus pagoda</i>
Swamp chestnut oak	<i>Quercus michauxii</i>
Laurel oak	<i>Quercus laurifolia</i>
Bald cypress	<i>Taxodium distichum</i>
Water hickory	<i>Carya aquatica</i>
Sweet pecan	<i>Carya illinoensis</i>
Sugarberry	<i>Celtis laevigata</i>
Green ash	<i>Fraxinus pennsylvanica</i>
Red mulberry	<i>Morus rubra</i>
Common persimmon	<i>Diospyros virginiana</i>