



DEPARTMENT OF THE ARMY
U.S. ARMY CORPS OF ENGINEERS, NEW ORLEANS DISTRICT
7400 LEAKE AVE
NEW ORLEANS, LA 70118-3651

April 26, 2021

Operations Division
Central Evaluation Section

Project Manager
S. Gail Gainey
(504) 862-1545
Sandra.g.gainey@usace.army.mil

SUBJECT: MVN-2014-00940-CG

PUBLIC NOTICE

Interested parties are hereby notified that an application has been received by the District engineer for a Department of the Army permit to authorize the following pursuant to (X) Section 10 of the Rivers and Harbors Act of March 3, 1899 (30 Stat. 1151; 33 USC 403); and/or (X) section 404 of the Clean Water Act (86 Stat. 816; 33 USC 1344).

TIME EXTENSION FOR THE SHIP AND BARGE DOCK AND HEAVY HAUL DOCK WITH WATER INTAKE STRUCTURES IN MISSISSIPPI RIVER IN ST. JAMES PARISH

NAME OF APPLICANT: Yuhuang Chemical Inc, c/o Lanier & Associates, 4101 Magazine Street, New Orleans, Louisiana 70115.

LOCATION OF WORK: In the Mississippi River, Right Descending Bank, River Mile 157.5, at 5327 St. James Co-Op Road, St. James, Louisiana in St. James Parish within the Mississippi River Basin in hydrologic unit (HUC 08070100), as shown on the attached drawings (Latitude 29.99682 N, Longitude -90.835628 W).

CHARACTER OF WORK: The applicant has requested a Department of the Army authorization for a time extension on the previously authorized work to clear, grade, excavate and deposit fill and/or aggregate material to construct and maintain a methanol plant facility with a barge and ship dock and a heavy haul road and barge dock to include two water intake structures, two levee crossings, a boat ramp, underground pipelines and an elevated piperack. The project is situated on an approximately 1,000-acre tract and, once complete, will directly impact 1.79 acres of forested wetlands and 1.15 acres Waters of the U.S. No modifications or additional work has been proposed.

The comment period for the Department of Army will close in **30 days** from the date of this public notice. Written comments, including suggestions for modifications or objections to the proposed work, stating reasons thereof, are being solicited from anyone having interest in this permit and must be mailed so as to be received before or by the last day of the comment period. Letters concerning the Corps of Engineers permit application must reference the applicant's name and the Permit Application Number, and be mailed to the Corps of Engineers at the address above,

ATTENTION: REGULATORY BRANCH, ODR-C, S. Gail Gainey.

Corps of Engineers Permit Criteria

The decision whether to issue a permit will be based on an evaluation of the probable impacts, including cumulative impacts of the proposed activity on the public interest. That decision will reflect the national concern for both protection and utilization of important resources. The benefit which reasonably may be expected to accrue from the proposal must be balanced against its reasonably foreseeable detriments. All factors which may be relevant to the proposal will be considered including the cumulative effects thereof; among those are conservation, economics, aesthetics, general environmental concerns, wetlands, historic properties, fish and wildlife values, flood hazards, floodplain values, land use, navigation, shoreline erosion and accretion, recreation, water supply and conservation, water quality, energy needs, safety, food and fiber production, mineral needs, considerations of property ownership and, in general, the needs and welfare of the people.

The U.S. Army Corps of Engineers is soliciting comments from the public, federal, state, and local agencies and officials, Indian Tribes, and other interested parties in order to consider and evaluate the impacts of this proposed activity. Any comments received will be considered by the U.S. Army Corps of Engineers to determine whether to make, modify, condition, or deny a permit for this proposal. To make this decision, comments are used to assess impacts on endangered species, historic properties, water quality, general environmental effects, and other public interest factors listed above. Comments are used in the preparation of an Environmental Assessment and/or an Environmental Impact Statement pursuant to the National Environmental Policy Act. Comments are also used to determine the need for a public hearing and to determine the overall public interest of the proposed activity.

The New Orleans District is unaware of properties listed on the National Register of Historic Places near the proposed work. The possibility exists that the proposed work may damage or destroy presently unknown archeological, scientific, prehistorical, historical sites, or data. Copies of this notice are made available to the State Archeologist and the State Historic Preservation Officer.

The New Orleans District has determined that the proposed project is located in waters known to be utilized by the Pallid Sturgeon (*Scaphirhynchus albus*). Utilizing the Information & Planning Consultation for Endangered Species in Louisiana protocol, dated January 27, 2020 between the U.S. Army Corps of Engineers, New Orleans and U.S. Fish and Wildlife Service, Ecological Services Office, the Corps has determined that with the inclusion of the Project Recommendations For Intake Structures, proposed work is not likely to adversely affect the Pallid Sturgeon.

This notice initiates the Essential Fish Habitat (EFH) consultation requirements of the Magnuson-Stevens Fishery Conservation and Management Act. The applicant's proposal would result in the destruction or alteration of 0 acres of EFH utilized by various life stages of red drum and penaeid shrimp. Our initial determination is that the proposed action would not have a substantial adverse impact on EFH or federally managed fisheries in the Gulf of Mexico. Our final determination relative to project impacts and the need for mitigation measures is subject to review by and coordination with the National Marine Fisheries Service.

If the proposed work involves deposits of dredged or fill material into navigable waters, the evaluation of the probable impacts will include the application of guidelines established by the Administrator of the Environmental Protection Agency. Also, a certification that the proposed activity

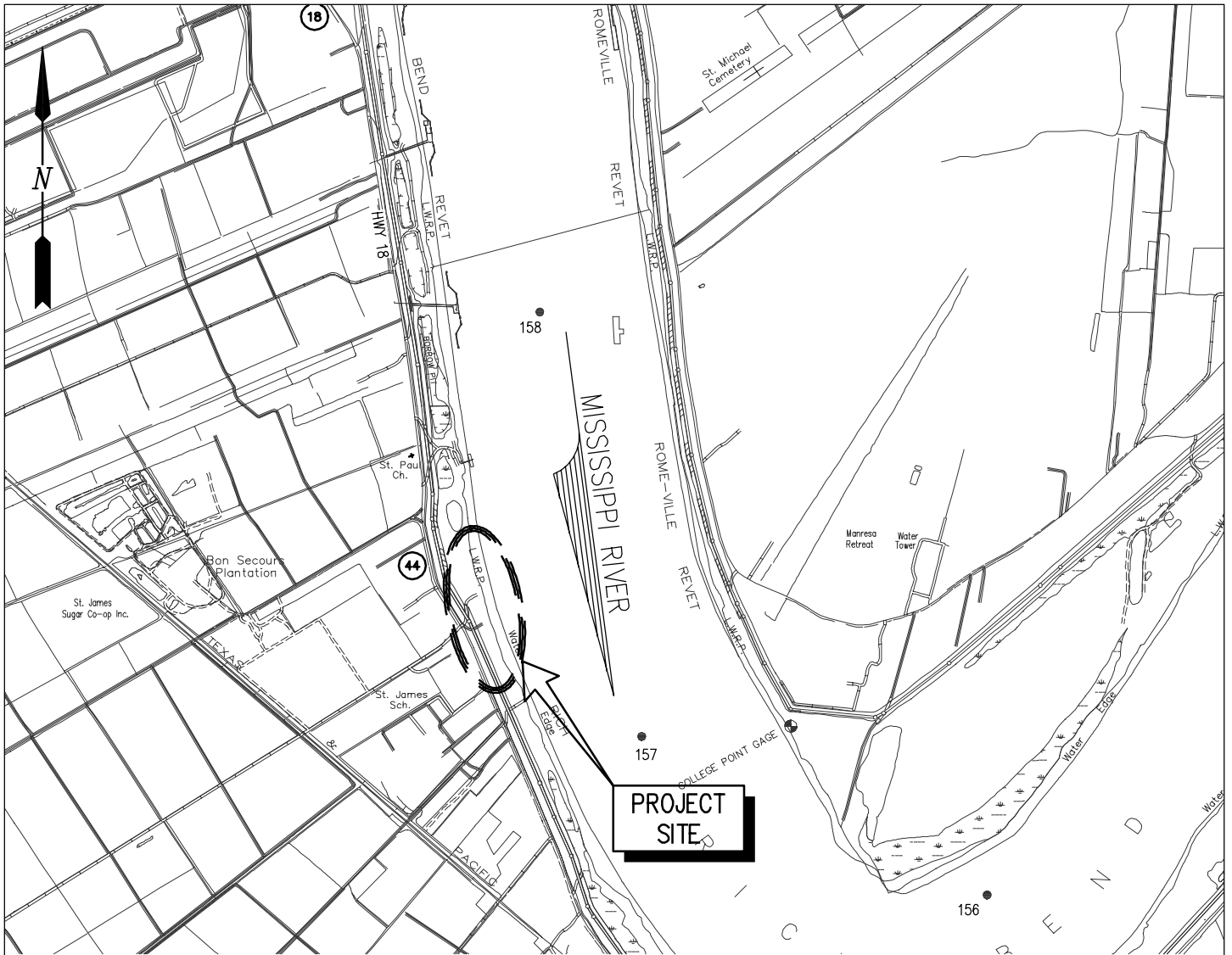
will not violate applicable water quality standards will be required from the Department of Environmental Quality, Office of Environmental Services, before a permit is issued.

Any person may request, in writing, within the comment period specified in this notice, that a public hearing be held to consider this application. Requests for public hearings shall state, with particularity, the reasons for holding a public hearing. You are requested to communicate the information contained in this notice to any other parties whom you deem likely to have interest in the matter.

The applicant has certified that the proposed activity described in the application complies with and will be conducted in a manner that is consistent with the Louisiana Coastal Resources Program (Louisiana Coastal Zone Application P20150795). The Department of the Army permit will not be issued unless the applicant received approval or a waiver of the Coastal Use Permit by the Department of Natural Resources.

JOHN M. HERMAN
Chief, Central Evaluation Section
Regulatory Branch

Enclosures



VICINITY MAP

GRAPHIC SCALE IN FEET



GENERAL NOTES

1. AS-BUILT DRAWINGS AND/OR PLANS SHALL HAVE WRITTEN ON THEM THE DATE OF COMPLETION OF SAID ACTIVITIES AND SHALL BE SUBMITTED TO THE LOUISIANA DEPARTMENT OF NATURAL RESOURCES, OFFICE OF COASTAL MANAGEMENT, P. O. BOX 44487, BATON ROUGE, LA 70804-4487 WITHIN 30 DAYS FOLLOWING PROJECT COMPLETION.
2. ALL STRUCTURES, FACILITIES, WELL AND PIPELINES/FLOWLINES OCCURRING IN OPEN WATER AREAS OR IN OILFIELD CANALS OR SLIPS SHALL BE REMOVED WITHIN 120 DAYS OF ABANDONMENT OF THE FACILITIES FOR THE HEREIN PERMITTED USE UNLESS PRIOR WRITTEN APPROVAL TO LEAVE SUCH STRUCTURES IN PLACE IS RECEIVED FROM THE COASTAL MANAGEMENT DIVISION. THIS CONDITION DOES NOT PRECLUDE THE NECESSITY FOR REVISING THE CURRENT PERMIT OR OBTAINING A SEPARATE COASTAL USE PERMIT, SHOULD ONE BE REQUIRED.
3. STRUCTURES MUST ALSO BE MARKED/LIGHTED IN ACCORDANCE WITH U. S. COAST GUARD REGULATIONS.
4. IN ORDER TO ENSURE THE SAFETY OF ALL PARTIES, THE PERMITTEE SHALL CONTACT THE LOUISIANA ONE CALL SYSTEM (1-800-272-3020) A MINIMUM OF 48 HOURS PRIOR TO THE COMMENCEMENT OF ANY EXCAVATION (DIGGING, DREDGING, JETTING, ETC.) OR DEMOLITION ACTIVITY
5. ALL ELEVATIONS REFER TO NGVD 29 UNLESS NOTED OTHERWISE.



VICINITY

AREA MAP

ST. JAMES PARISH
 LATITUDE: 29° 59' 32.67" N
 LONGITUDE: 90° 50' 02.12" W

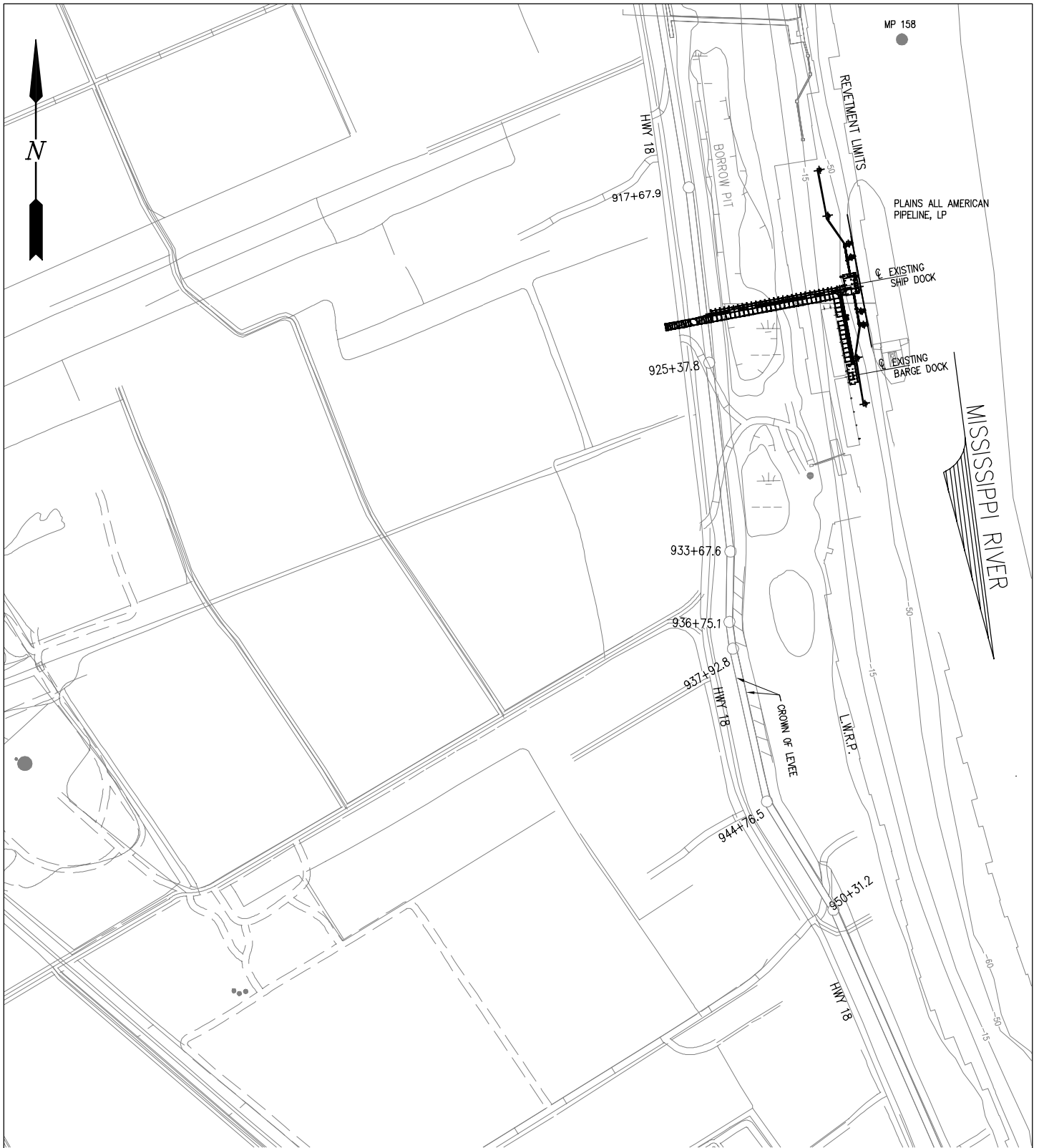
9906-P1

LANIER & ASSOCIATES
 CONSULTING ENGINEERS
 INCORPORATED
 NEW ORLEANS, LA · BEAUMONT, TX

YUHUANG CHEMICAL INC.
 ST. JAMES LOUISIANA

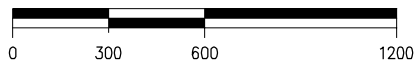
PROPOSED NEW MARINE FACILITY
VICINITY MAP, AREA MAP AND GENERAL NOTES

DATE	08/15
DESIGN	CLO
DRAWN	MEW
CHECK	EJ
CONTRACT	9906
SHEET No.	
	1 OF 26



EXISTING SITE PLAN

SCALE: 1"=600'



9906-P2

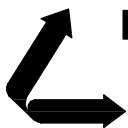
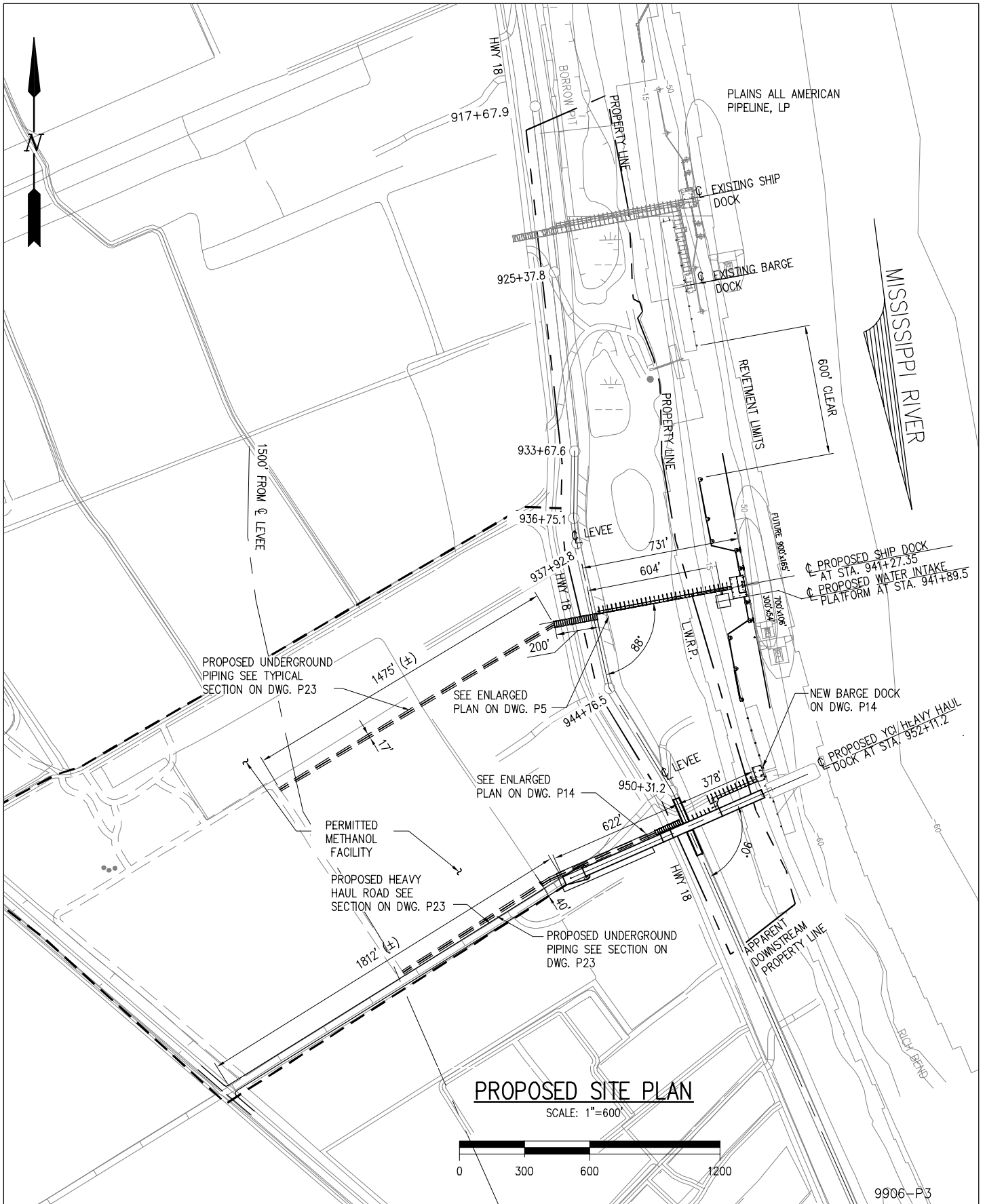
LANIER & ASSOCIATES
 CONSULTING ENGINEERS
 INCORPORATED
 NEW ORLEANS, LA · BEAUMONT, TX

YUHUANG CHEMICAL INC. LOUISIANA
 ST. JAMES

PROPOSED NEW MARINE FACILITY

EXISTING SITE PLAN

DATE	08/15
DESIGN	CLO
DRAWN	MEW
CHECK	JEJ
CONTRACT	9906
SHEET No.	
	2 OF 26



LANIER & ASSOCIATES

CONSULTING ENGINEERS
INCORPORATED

NEW ORLEANS, LA · BEAUMONT, TX

ST. JAMES

YUHUANG CHEMICAL INC.

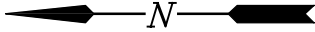
LOUISIANA

PROPOSED NEW MARINE FACILITY

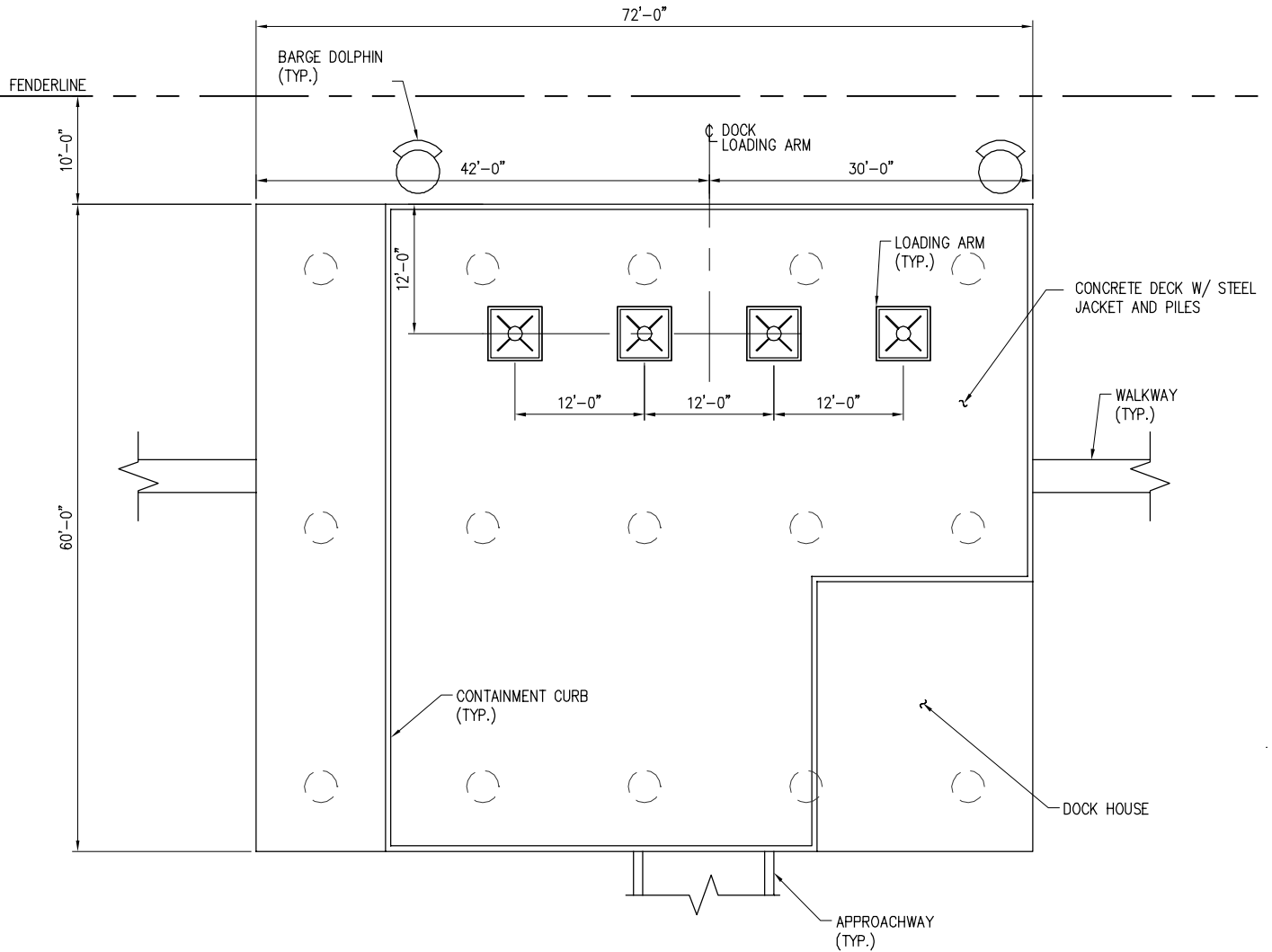
PROPOSED SITE PLAN

DATE 08/15
DESIGN CLO
DRAWN MEW
CHECK J.E.J.
CONTRACT 9906
SHEET No.

3 OF **26**



MISSISSIPPI RIVER

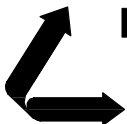


SHIP DOCK ENLARGED PLATFORM PLAN

SCALE: 1/16"=1'-0"



9906-P6



LANIER & ASSOCIATES

CONSULTING ENGINEERS
INCORPORATED

NEW ORLEANS, LA · BEAUMONT, TX

ST. JAMES

YUHUANG CHEMICAL INC.

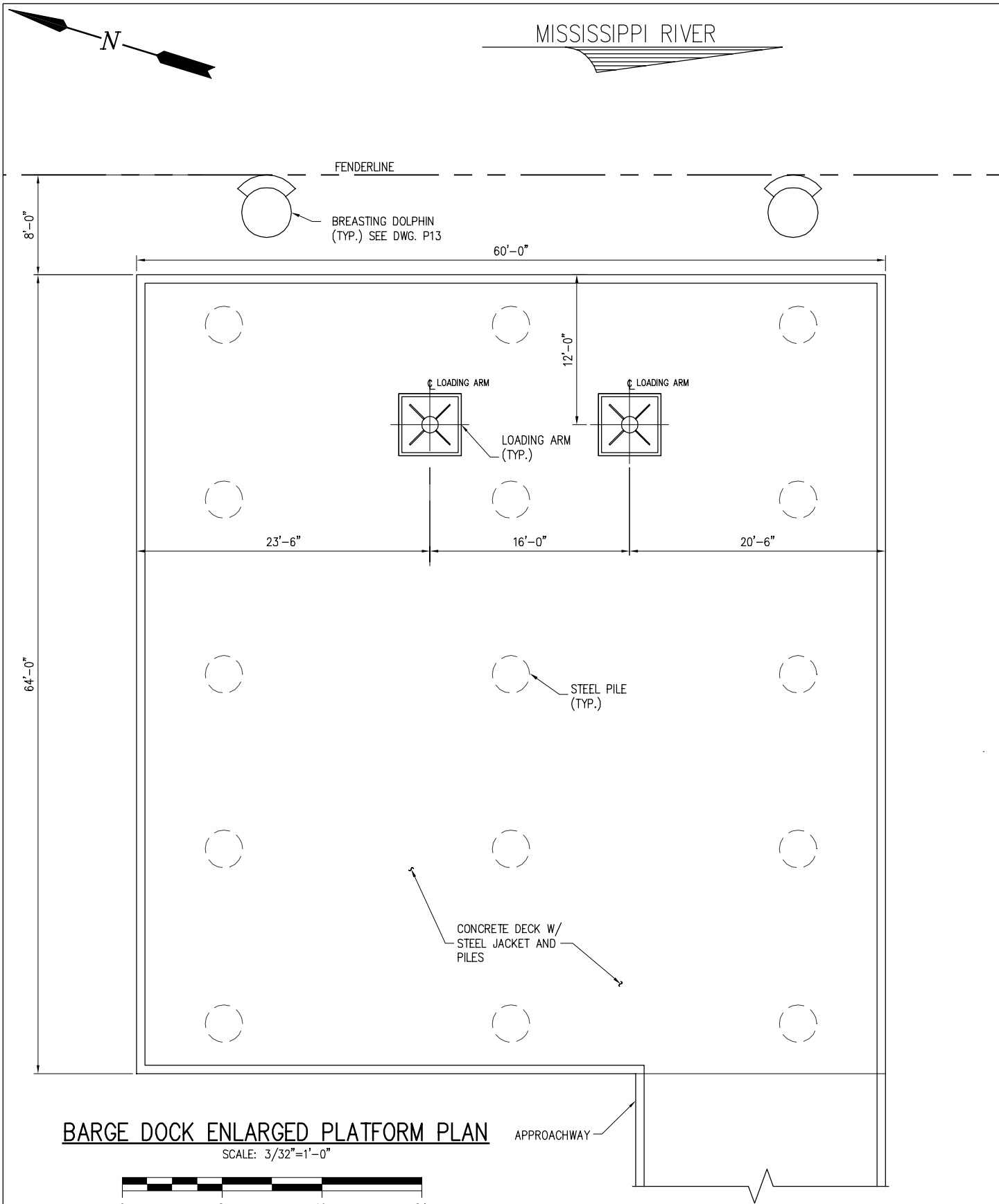
LOUISIANA

PROPOSED NEW MARINE FACILITY

SHIP DOCK ENLARGED PLATFORM PLAN

DATE	08/15
DESIGN	CLO
DRAWN	MEW
CHECK	J.E.J
CONTRACT	9906
SHEET	No.

6 OF **26**



BARGE DOCK ENLARGED PLATFORM PLAN

SCALE: 3/32"=1'-0"



9906-P7

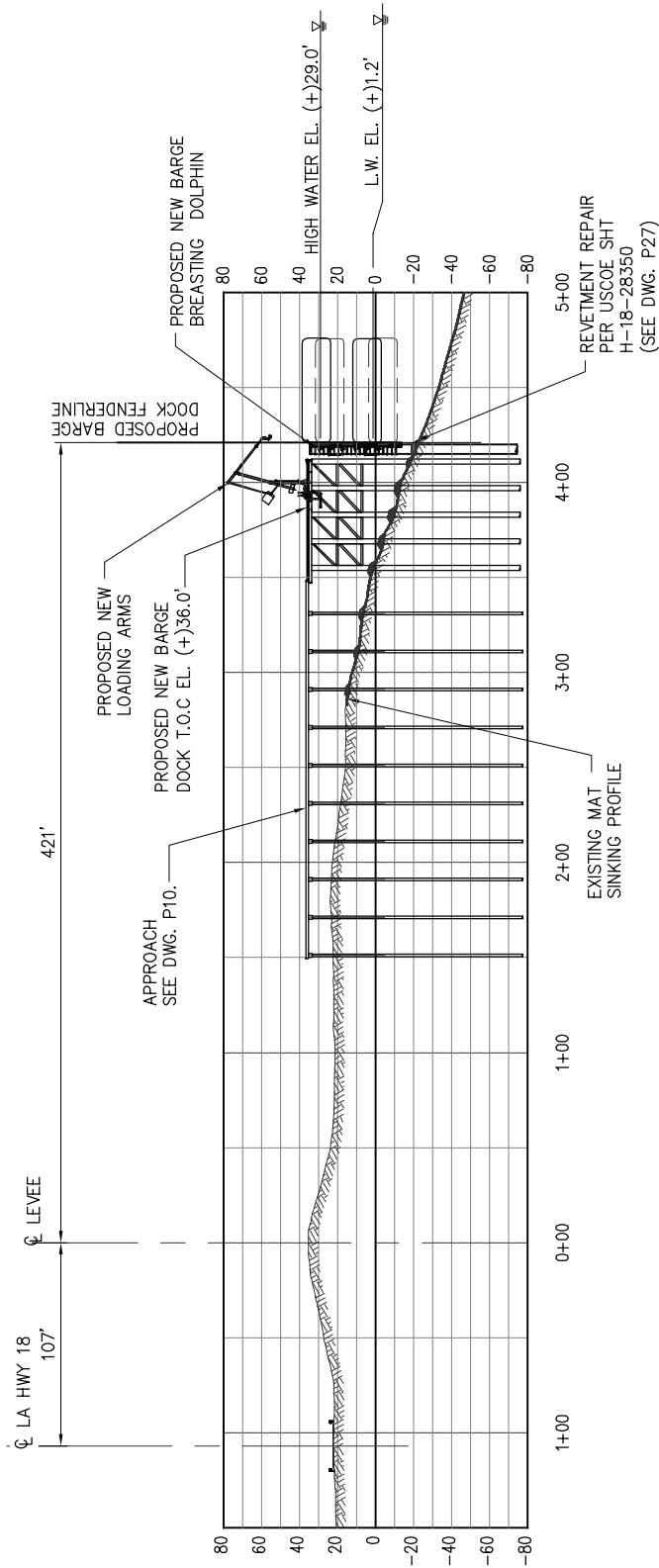
LANIER & ASSOCIATES
 CONSULTING ENGINEERS
 INCORPORATED
 NEW ORLEANS, LA · BEAUMONT, TX

YUHUANG CHEMICAL INC.
 ST. JAMES LOUISIANA

PROPOSED NEW MARINE FACILITY

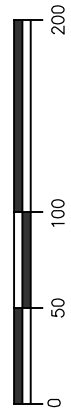
BARGE DOCK ENLARGED PLATFORM PLAN

DATE	08/15
DESIGN	CLO
DRAWN	MEW
CHECK	J.E.J
CONTRACT	9906
SHEET No.	7 OF 26

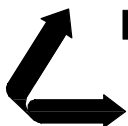


TYPICAL BARGE DOCK ELEVATION

SCALE: 1"=100'



9906-P9



LANIER & ASSOCIATES
CONSULTING ENGINEERS
INCORPORATED

NEW ORLEANS, LA · BEAUMONT, TX

ST. JAMES

YUHUANG CHEMICAL INC.

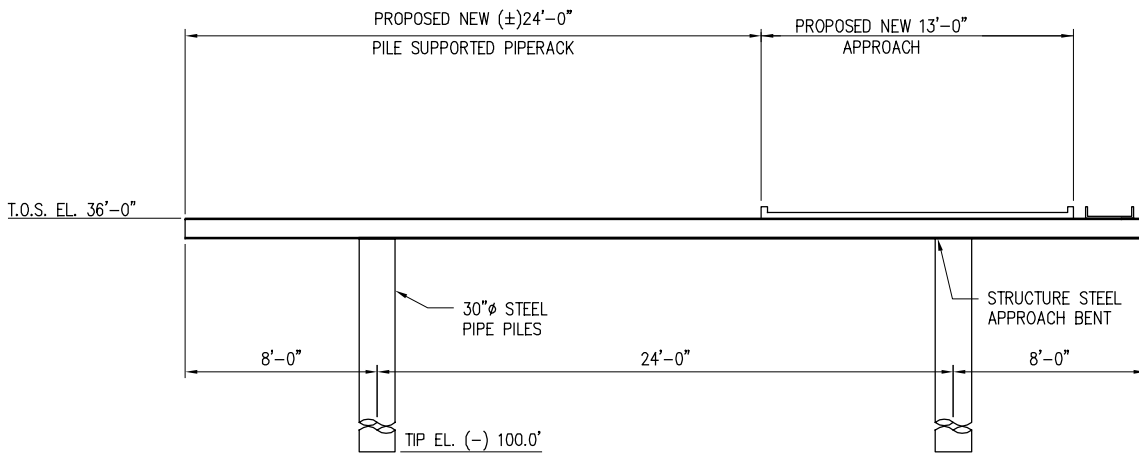
LOUISIANA

PROPOSED NEW MARINE FACILITY

TYPICAL BARGE DOCK ELEVATION

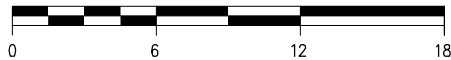
DATE 08/15
DESIGN CLO
DRAWN MEW
CHECK JEJ
CONTRACT 9906
SHEET No.

9 OF **26**

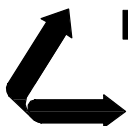


TYPICAL SHIP DOCK AND BARGE DOCK APPROACH

SCALE: 1/8"=1'-0"



9906-P10



LANIER & ASSOCIATES
CONSULTING ENGINEERS
INCORPORATED

NEW ORLEANS, LA · BEAUMONT, TX

ST. JAMES

YUHUANG CHEMICAL INC.

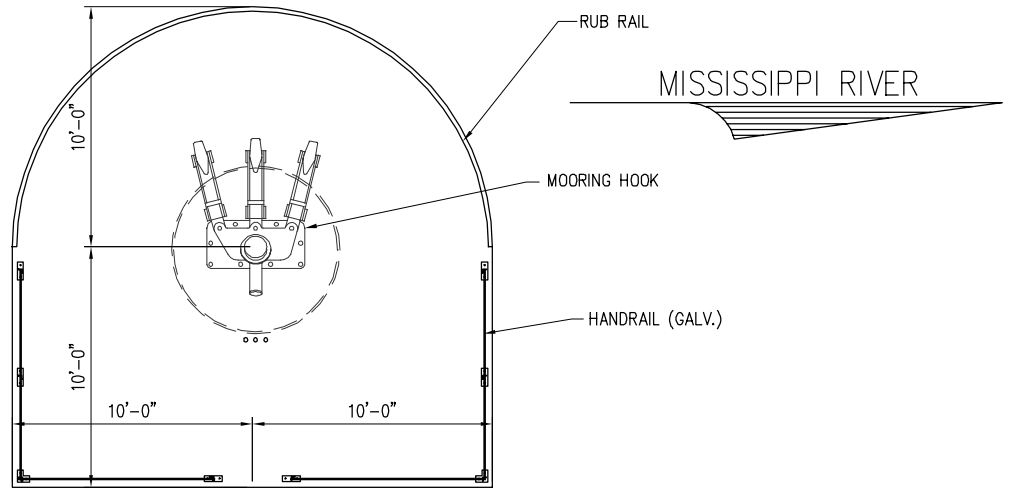
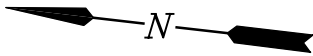
LOUISIANA

PROPOSED NEW MARINE FACILITY

TYPICAL SHIP AND BARGE DOCK APPROACHES

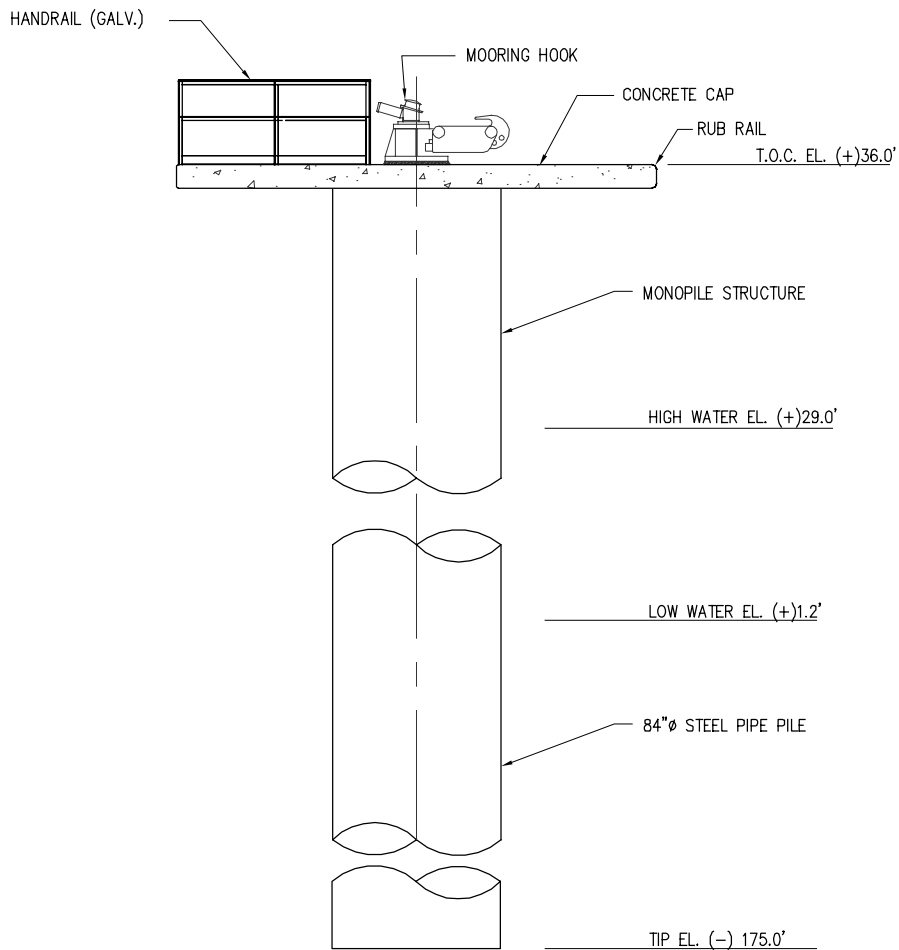
DATE 08/15
DESIGN CLO
DRAWN MEW
CHECK JEJ
CONTRACT 9906
SHEET No.

10 OF **26**



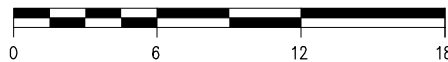
MOORING DOLPHIN PLAN

SCALE: 1/8"=1'-0"

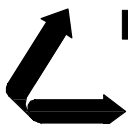


MOORING DOLPHIN ELEVATION

SCALE: 1/8"=1'-0"



9906-P11



LANIER & ASSOCIATES

CONSULTING ENGINEERS
INCORPORATED

NEW ORLEANS, LA · BEAUMONT, TX

ST. JAMES

YUHUANG CHEMICAL INC.

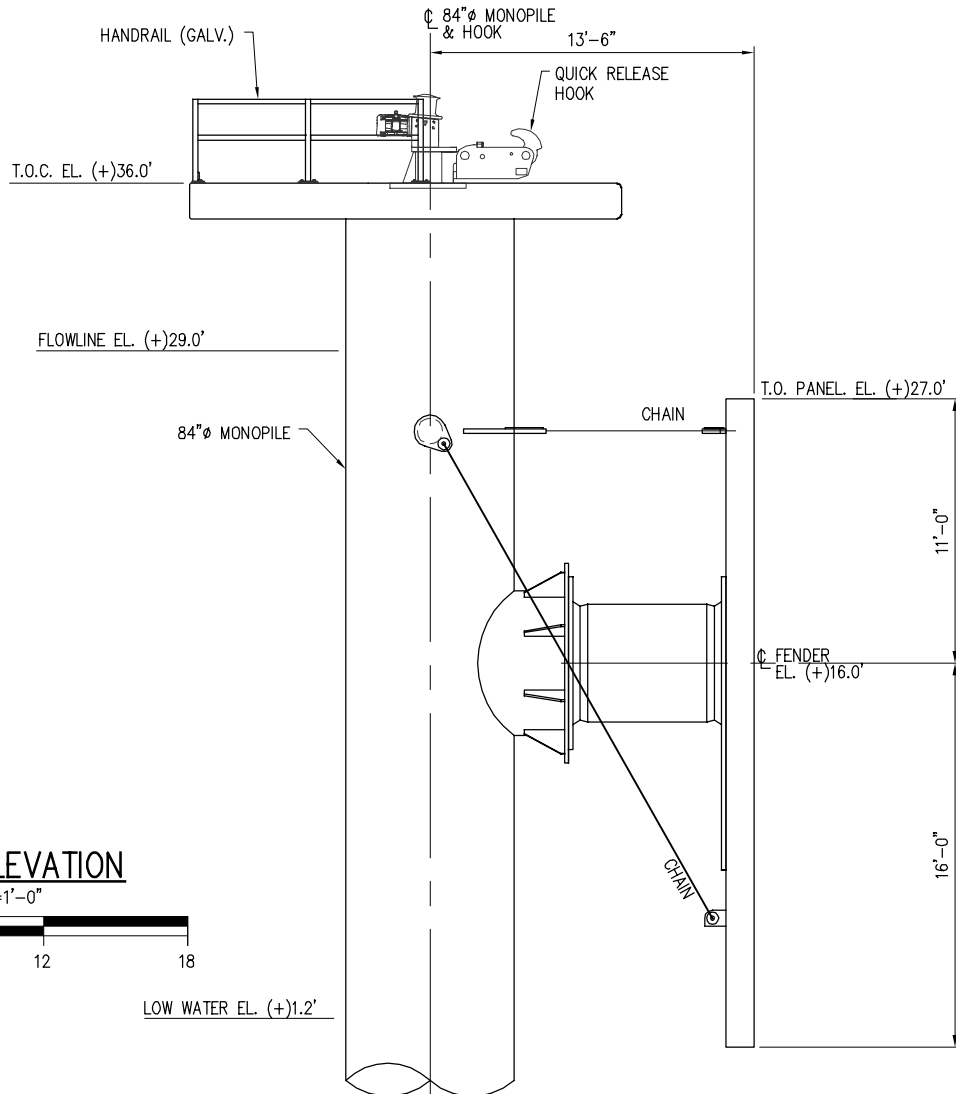
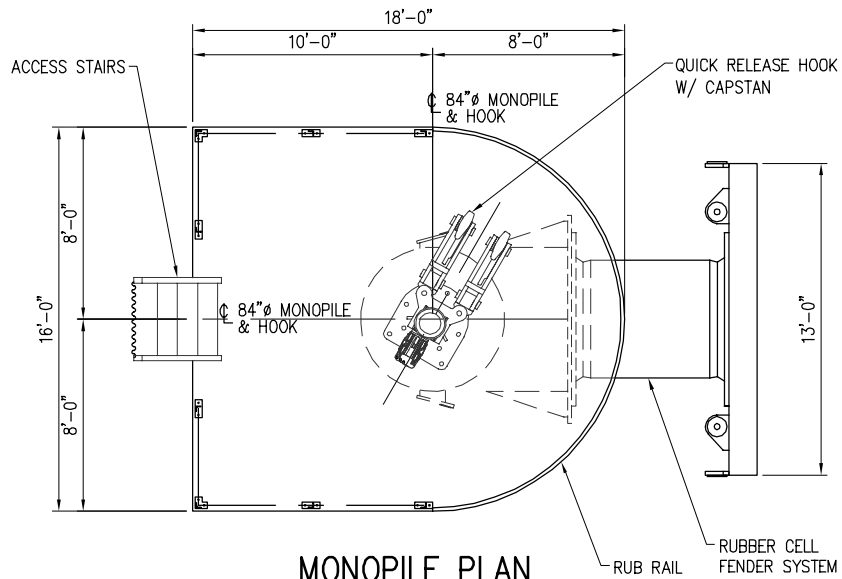
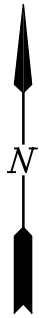
LOUISIANA

PROPOSED NEW MARINE FACILITY

MOORING DOLPHIN PLAN AND ELEVATION

DATE 08/15
DESIGN CLO
DRAWN MEW
CHECK JEJ
CONTRACT 9906
SHEET No.

11 OF 26



9906-P12



LANIER & ASSOCIATES
CONSULTING ENGINEERS
INCORPORATED

NEW ORLEANS, LA · BEAUMONT, TX

ST. JAMES

YUHUANG CHEMICAL INC.

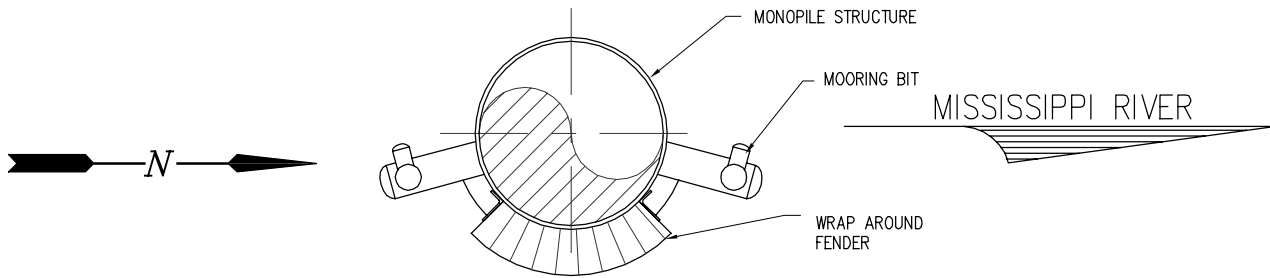
LOUISIANA

PROPOSED NEW MARINE FACILITY

BREASTING DOLPHIN PLAN AND ELEVATION

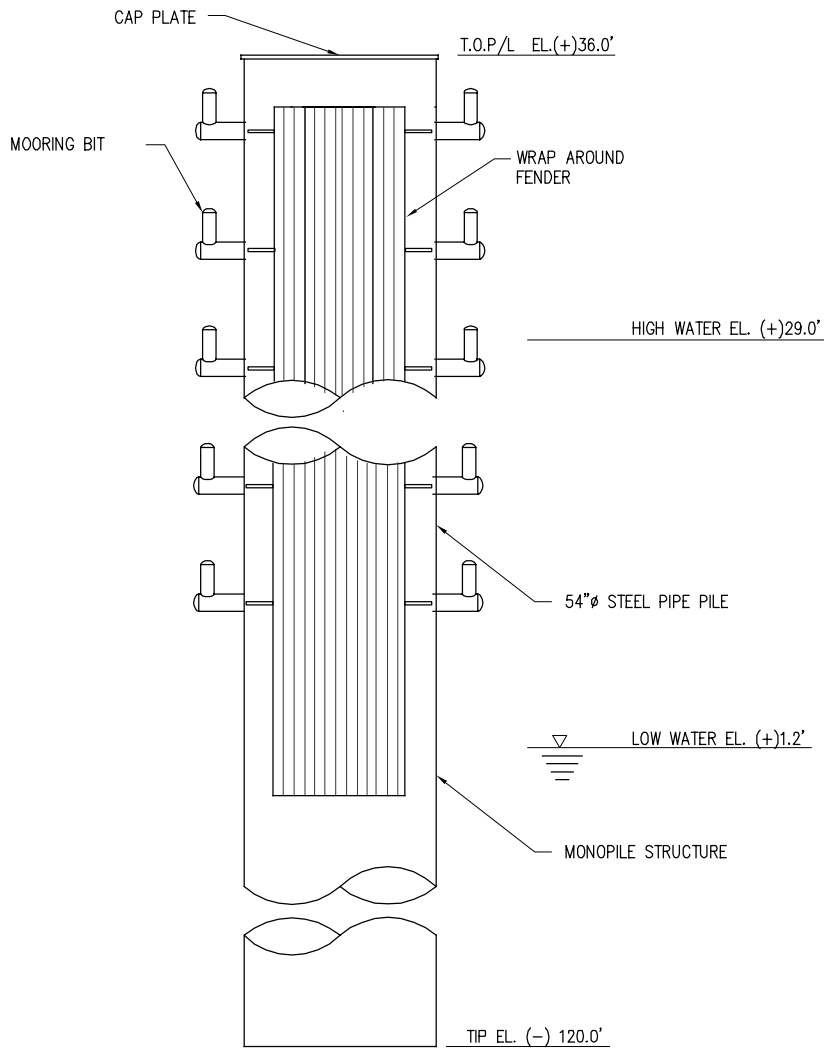
DATE 08/15
DESIGN CLO
DRAWN MEW
CHECK JEJ
CONTRACT 9906
SHEET No.

12 OF 26



BARGE DOLPHIN PLAN

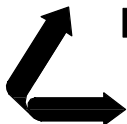
SCALE: 1/8"=1'-0"



BARGE DOLPHIN ELEVATION

SCALE: 1/8"=1'-0"

9906-P13



LANIER & ASSOCIATES

CONSULTING ENGINEERS
INCORPORATED

NEW ORLEANS, LA · BEAUMONT, TX

ST. JAMES

YUHUANG CHEMICAL INC.

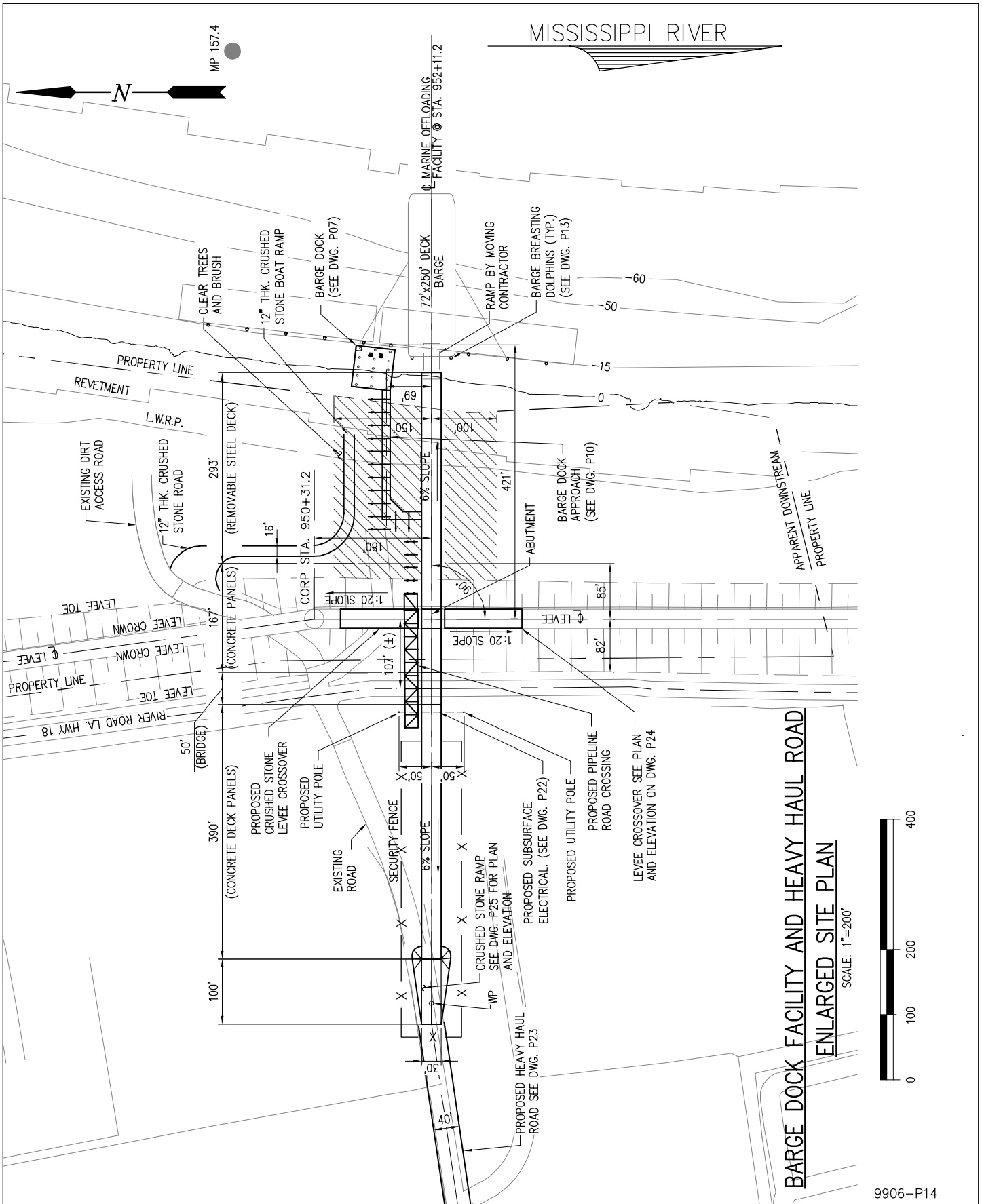
LOUISIANA

PROPOSED NEW MARINE FACILITY

BARGE DOLPHIN PLAN AND ELEVATION

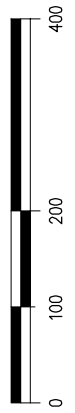
DATE 08/15
DESIGN CLO
DRAWN MEW
CHECK JEJ
CONTRACT 9906
SHEET No.

13 OF **26**



**BARGE DOCK FACILITY AND HEAVY HAUL ROAD
ENLARGED SITE PLAN**

SCALE: 1"=200'



9906-P14

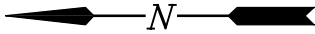
LANIER & ASSOCIATES
CONSULTING ENGINEERS
INCORPORATED
NEW ORLEANS, LA · BEAUMONT, TX

YUHUANG CHEMICAL INC.
ST. JAMES · LOUISIANA

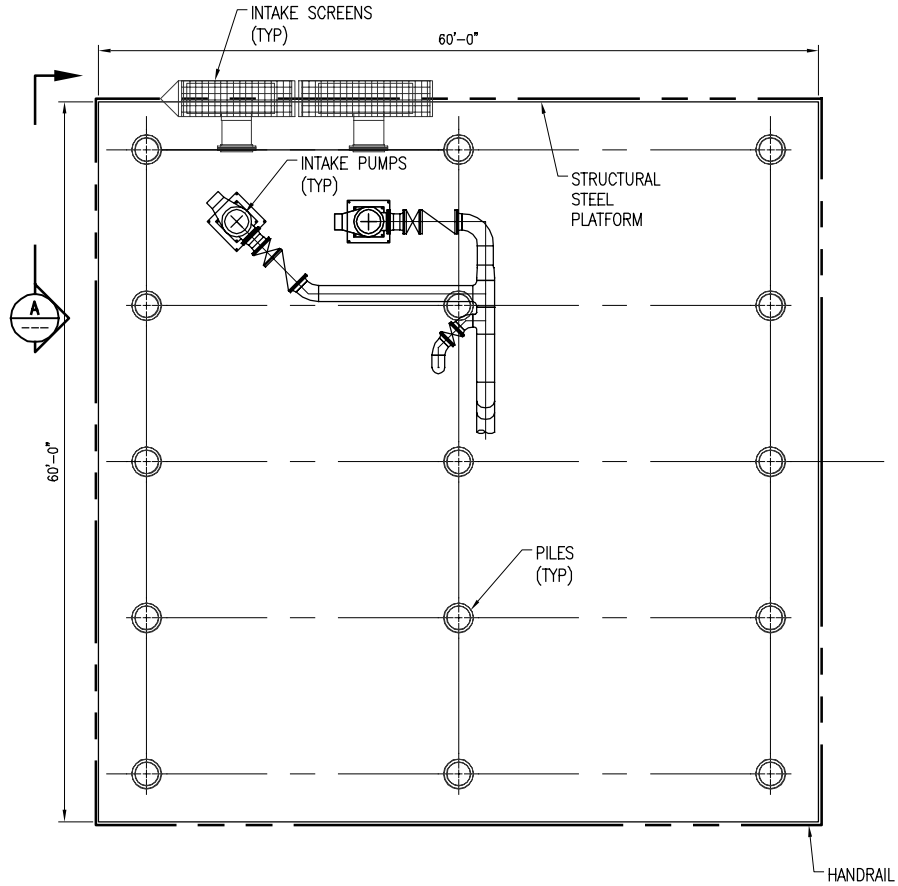
PROPOSED NEW MARINE FACILITY

ENLARGED SITE PLAN

DATE	08/15
DESIGN	CLO
DRAWN	MEW
CHECK	JEJ
CONTRACT	9906
SHEET No.	14 OF 26

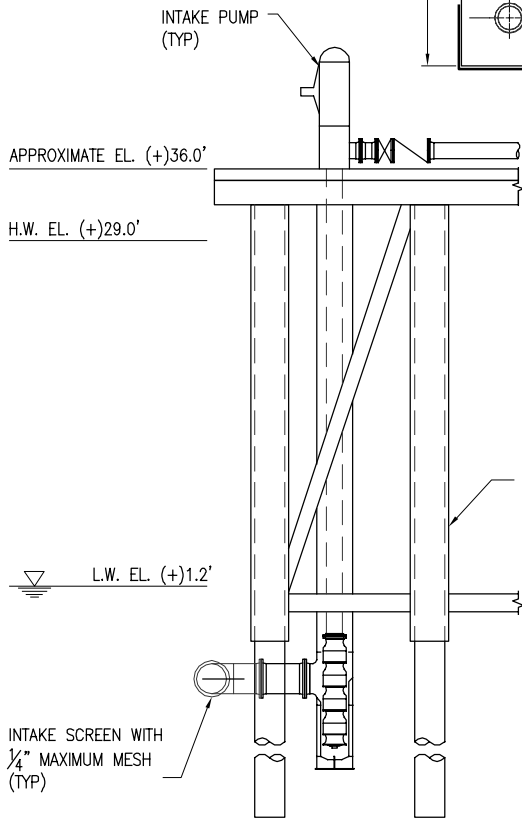


MISSISSIPPI RIVER



INTAKE PUMP PLATFORM PLAN

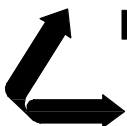
SCALE: 1/16" = 1'-0"



SECTION A-A

SCALE: 1/16" = 1'-0"

9906-P15



LANIER & ASSOCIATES
 CONSULTING ENGINEERS
 INCORPORATED

NEW ORLEANS, LA · BEAUMONT, TX

ST. JAMES

YUHUANG CHEMICAL INC.

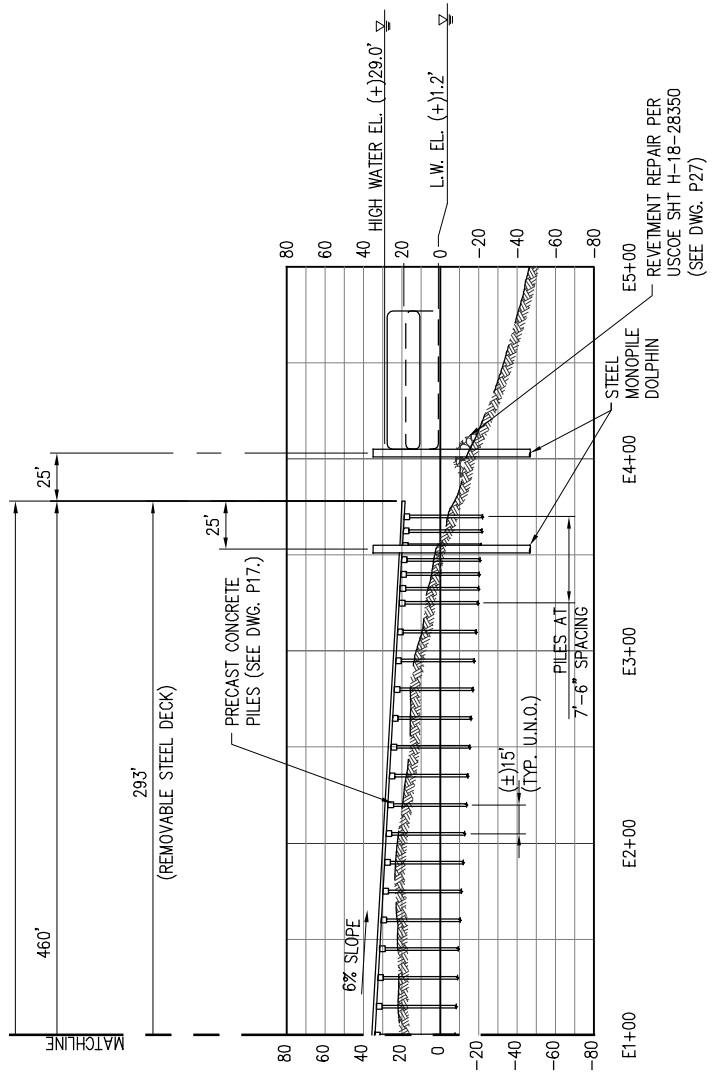
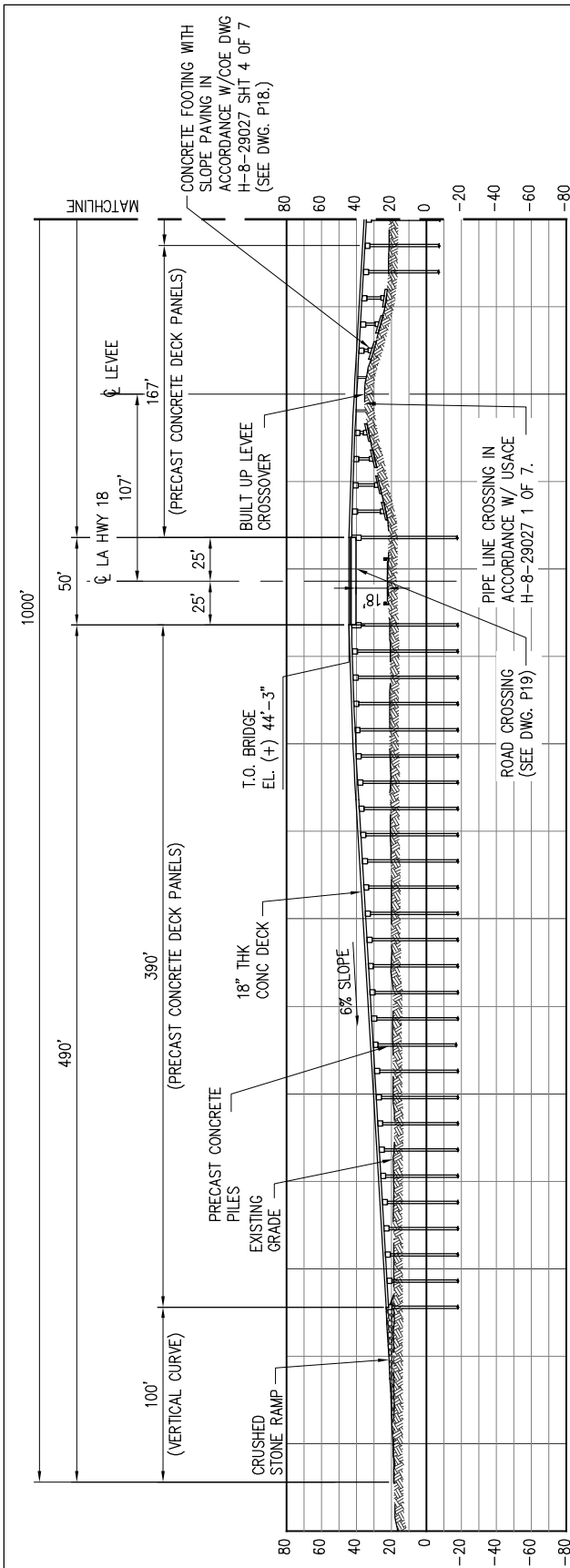
LOUISIANA

PROPOSED NEW MARINE FACILITY

INTAKE PUMP PLATFORM PLAN

DATE 08/15
 DESIGN CLO
 DRAWN MEW
 CHECK J.E.J.
 CONTRACT 9906
 SHEET No.

15 OF **26**



NOTES:

- DECK PANELS WILL BE REMOVABLE BELOW HIGH WATER. PANELS WILL BE REMOVED TO PREVENT SUBMERSION IN THE RIVER AS REQUIRED DUE TO THE RIVER STAGE.

MARINE OFFLOADING FACILITY

SCALE: 1"=100'

9906-P16

LANIER & ASSOCIATES
CONSULTING ENGINEERS
INCORPORATED

NEW ORLEANS, LA · BEAUMONT, TX

ST. JAMES **YUHUANG CHEMICAL INC.** LOUISIANA

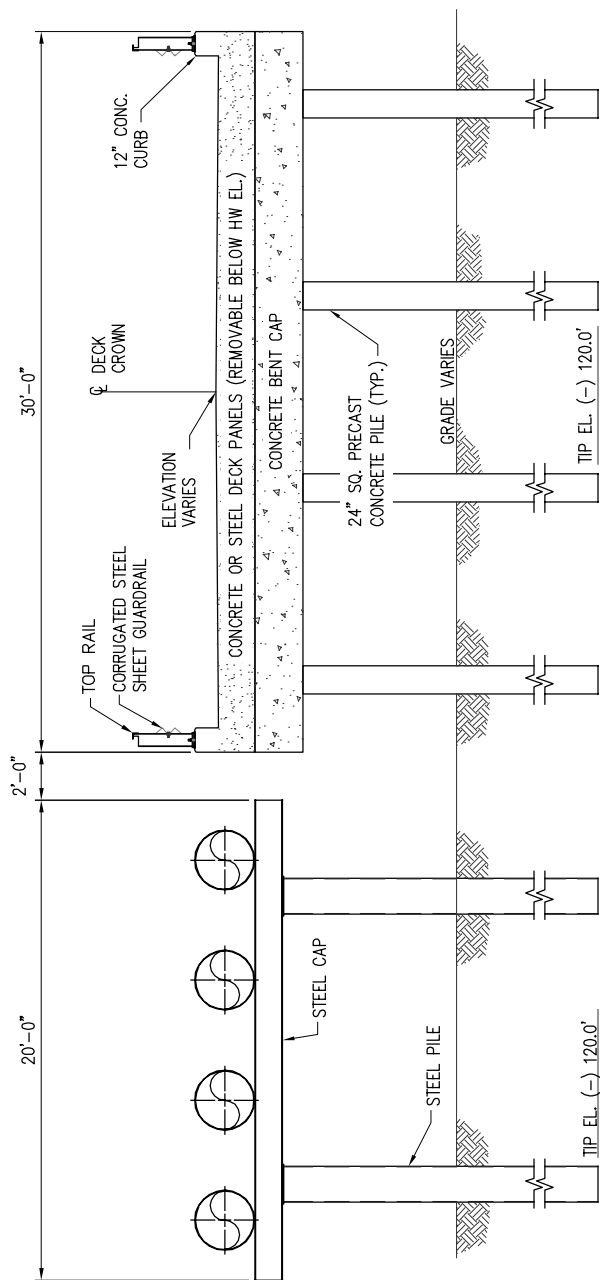
PROPOSED NEW MARINE FACILITY

MARINE OFFLOADING FACILITY

DATE	08/15
DESIGN	CLO
DRAWN	MEW
CHECK	JEJ
CONTRACT	9906
SHEET No.	16 OF 26

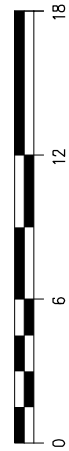
NOTE:

STEEL PIPE SUPPORT OCCURS FROM 10' OFFSHORE OF TOE OF LEVEE TO TYPICAL BARGE DOCK APPROACH SECTION.

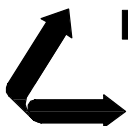


TYPICAL PILE BENT SECTION

SCALE: 1/8"=1'-0"



9906-P17



LANIER & ASSOCIATES
CONSULTING ENGINEERS
INCORPORATED

NEW ORLEANS, LA · BEAUMONT, TX

ST. JAMES

YUHUANG CHEMICAL INC.

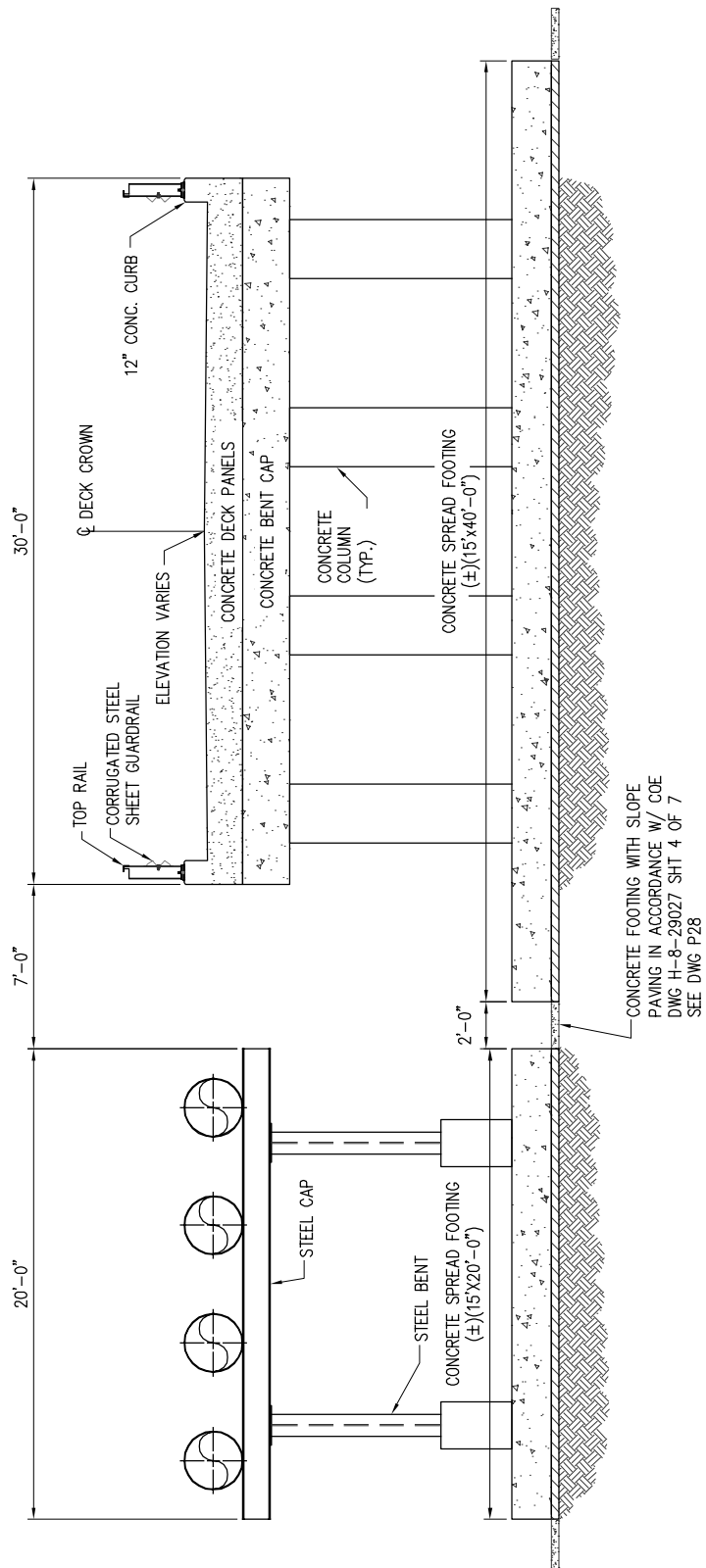
LOUISIANA

PROPOSED NEW MARINE FACILITY

TYPICAL PILE BENT SECTION

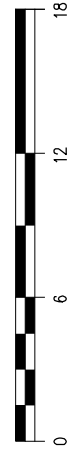
DATE 08/15
DESIGN CLO
DRAWN MEW
CHECK J.E.J.
CONTRACT 9906
SHEET No.

17 OF **26**

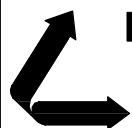


TYPICAL SPREAD FOOTING BENT SECTION

SCALE: 1/8" = 1'-0"



9906-P18

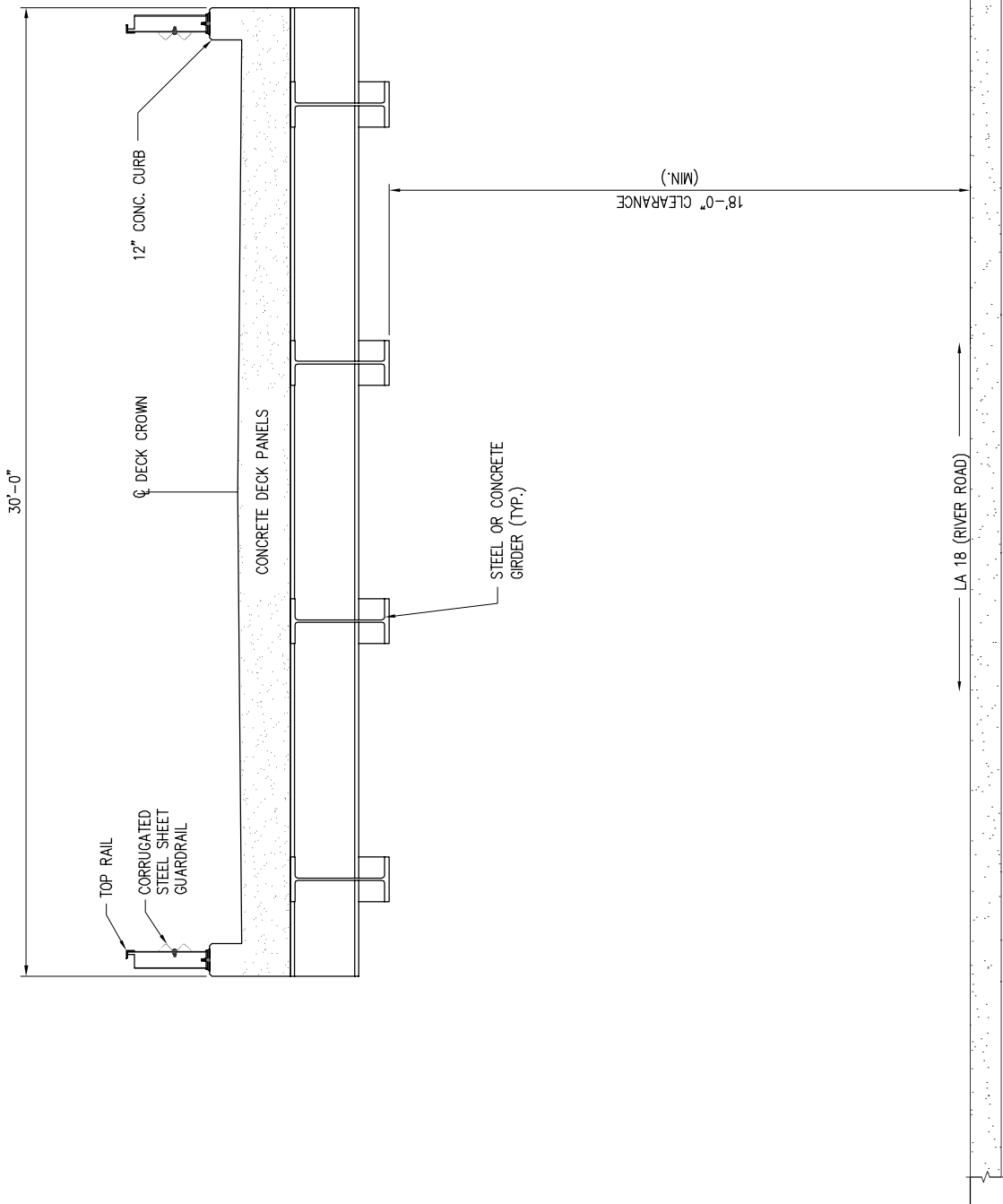


LANIER & ASSOCIATES
 CONSULTING ENGINEERS
 INCORPORATED
 NEW ORLEANS, LA · BEAUMONT, TX

YUHUANG CHEMICAL INC.
 ST. JAMES LOUISIANA

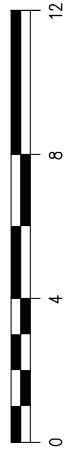
PROPOSED NEW MARINE FACILITY
TYPICAL SPREAD FOOTING BENT SECTION

DATE	08/15
DESIGN	CLO
DRAWN	MEW
CHECK	J.E.J
CONTRACT	9906
SHEET No.	18 OF 26

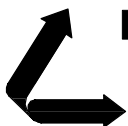


TYPICAL ROAD CROSSING SECTION

SCALE: 3/16" = 1'-0"



9906-P19



LANIER & ASSOCIATES
CONSULTING ENGINEERS
INCORPORATED

NEW ORLEANS, LA · BEAUMONT, TX

ST. JAMES

YUHUANG CHEMICAL INC.

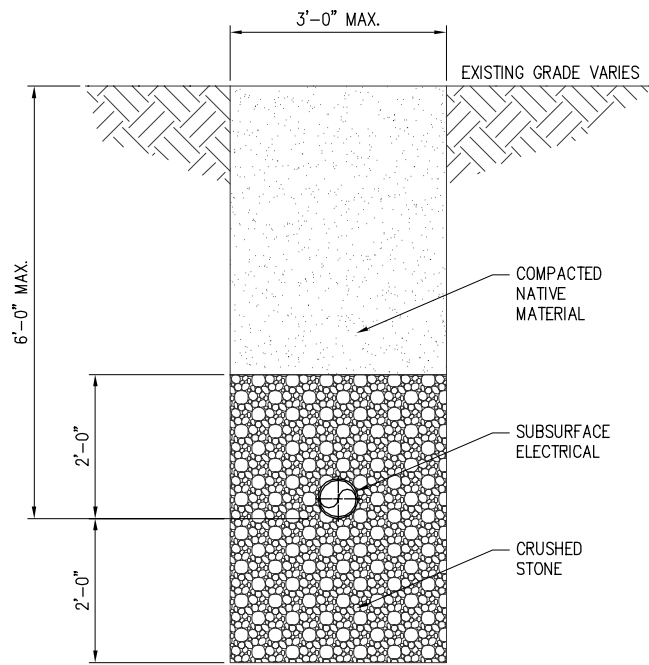
LOUISIANA

PROPOSED NEW MARINE FACILITY

TYPICAL ROAD CROSSING SECTION

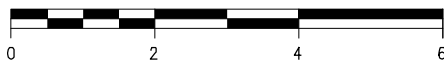
DATE 08/15
DESIGN CLO
DRAWN MEW
CHECK J.E.J.
CONTRACT 9906
SHEET No.

19 OF **26**

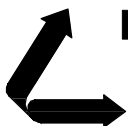


TYPICAL ELECTRICAL SUBSURFACE SECTION

SCALE: 3/8"=1'-0"



9906-P20



LANIER & ASSOCIATES
CONSULTING ENGINEERS
INCORPORATED

NEW ORLEANS, LA · BEAUMONT, TX

ST. JAMES

YUHUANG CHEMICAL INC.

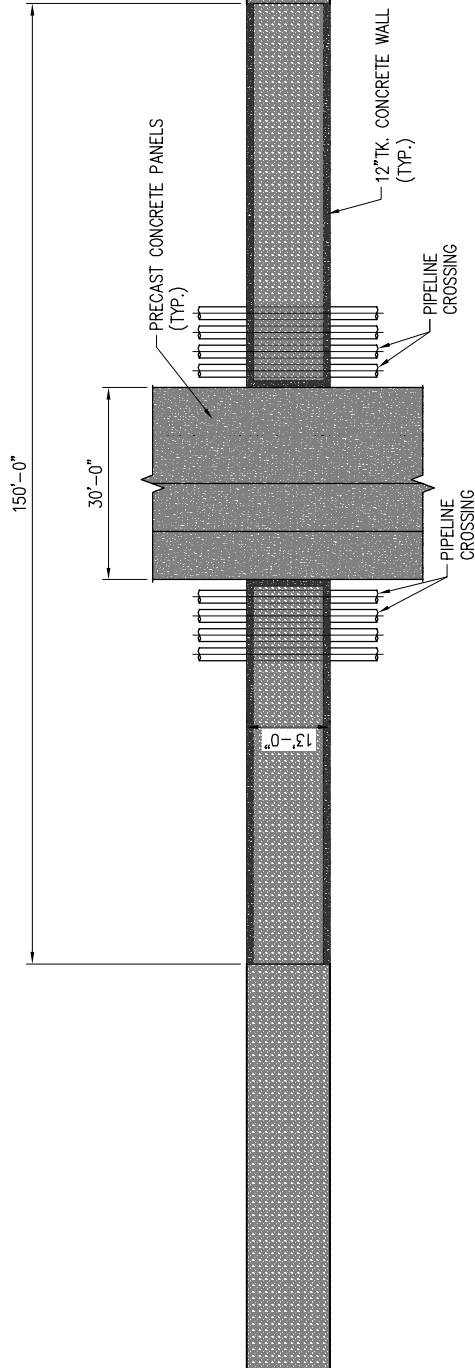
LOUISIANA

PROPOSED NEW MARINE FACILITY

TYPICAL PIPE PILE BENT SECTION

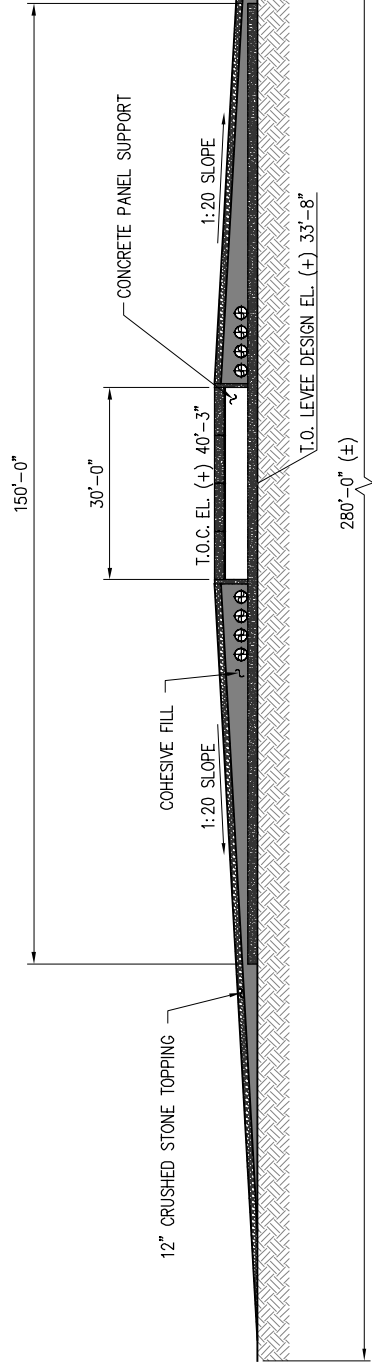
DATE 08/15
DESIGN CLO
DRAWN MEW
CHECK JEJ
CONTRACT 9906
SHEET No.

20 OF **26**



MARINE OFFLOADING LEVEE CROSSOVER PLAN

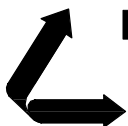
SCALE: 1"=30'



MARINE OFFLOADING LEVEE CROSSOVER ELEVATION

SCALE: 1"=30'

9906-P22



LANIER & ASSOCIATES
CONSULTING ENGINEERS
INCORPORATED

NEW ORLEANS, LA · BEAUMONT, TX

ST. JAMES

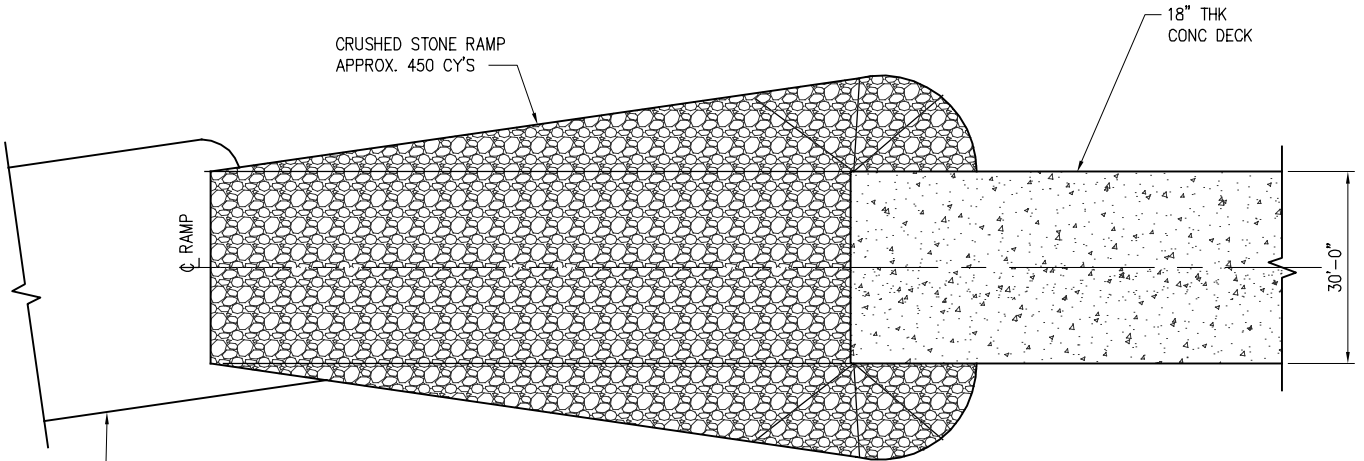
YUHUANG CHEMICAL INC.

LOUISIANA

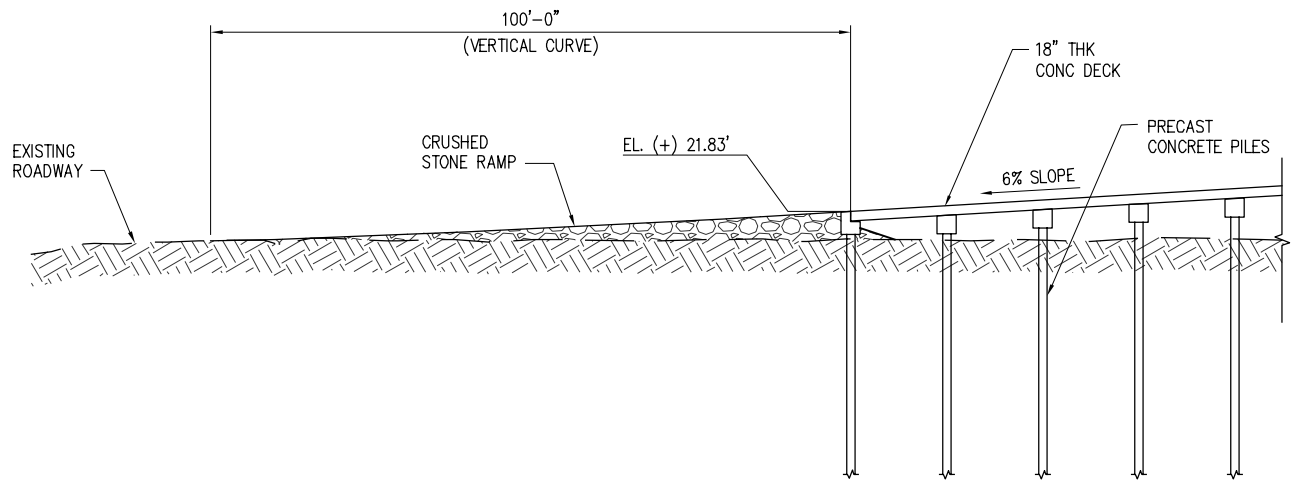
**PROPOSED NEW MARINE FACILITY
MARINE OFFLOADING
LEVEE CROSSOVER PLAN AND ELEVATION**

DATE 08/15
DESIGN CLO
DRAWN MEW
CHECK JEJ
CONTRACT 9906
SHEET No.

22 OF 26



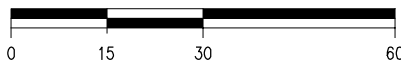
PLAN



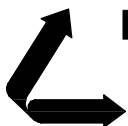
ELEVATION

MARINE HEAVY HAUL RAMP

SCALE: 1"=30'



9906-P23



LANIER & ASSOCIATES

CONSULTING ENGINEERS
INCORPORATED

NEW ORLEANS, LA · BEAUMONT, TX

ST. JAMES

YUHUANG CHEMICAL INC.

LOUISIANA

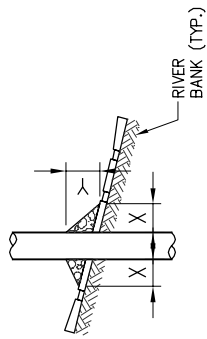
PROPOSED NEW MARINE FACILITY

MARINE HEAVY HAUL RAMP

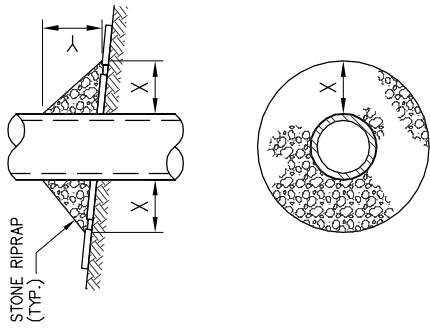
DATE 08/15
DESIGN CLO
DRAWN MEW
CHECK JEJ
CONTRACT 9906
SHEET No.

23 OF **26**

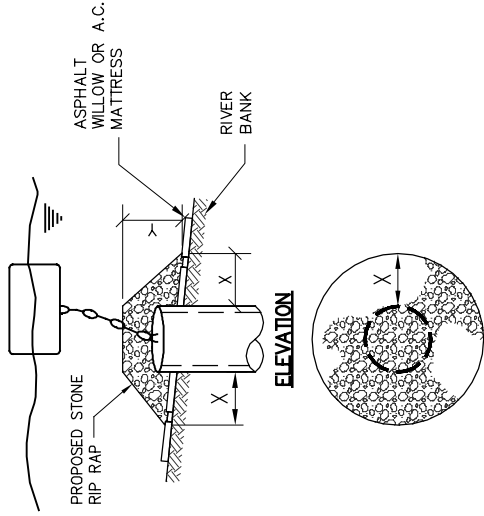
PILE



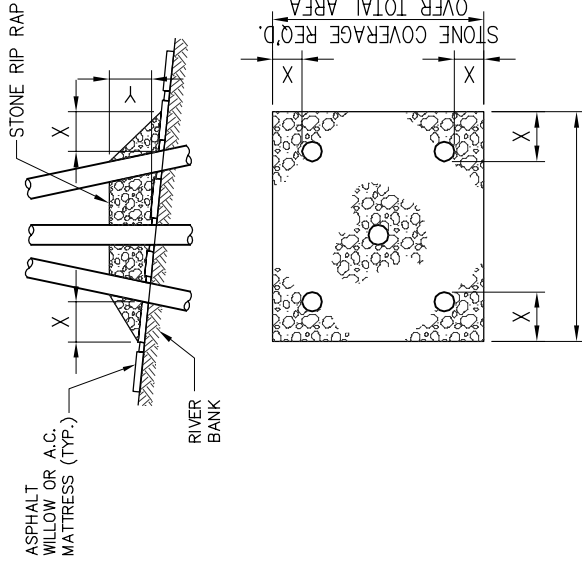
CAISSON



SPUD PILE WITH BUOY AND ANCHOR CHAIN



PILE CLUSTER



STONE COVERAGE REQ'D.
OVER TOTAL AREA

NOTES:

1. SIZE OF RIPRAP TO VARY BETWEEN 6 POUNDS AND 25 POUNDS WITH 40% TO 50% OF THE STONE WITHIN THE RANGE OF 25 POUNDS TO 75 POUNDS.
2. WHEN PENETRATING UPPER BANK PAVING IN A REVETMENT AREA WITH PILES, CAISSONS AND/OR PILE CLUSTERS, A 10 INCH THICKNESS OF RIPRAP STONE SHALL BE PLACED OVER ALL AREAS WHERE BANK PAVING IS DISTURBED BY DRIVING OPERATIONS.
3. WHEN USING ANCHOR CHAIN AND BUOY SYSTEM ANCHOR CHAIN MUST BE ATTACHED AT TOP OF PILE TO MINIMIZE REVETMENT DAMAGE.

DEPTH OF WATER IN FEET AT POINT OF PENETRATION AT TIME OF STONE PLACEMENT	DIMENSIONS IN FEET FOR PROTECTION AREA REQUIRED										
	PILE	CAISSON	SPUD PILE W/ ANCHOR CHAIN & BUOY	PILE CLUSTER	PILE CLUSTER	PILE CLUSTER	PILE CLUSTER	PILE CLUSTER	PILE CLUSTER	PILE CLUSTER	PILE CLUSTER
1 TO 10	3	1 1/2	5	2	3	1	3	1	3	1	3
11 TO 40	5	2	8	3	7	3	6	2	6	2	6
41 TO 60	8	3	12	4	12	4	10	3	10	3	10

LANIER & ASSOCIATES
CONSULTING ENGINEERS, INC.
NEW ORLEANS, LOUISIANA
LAB. NO. 9906, CIP. NO. 9906-P26, L. & A. INC. NO. 74 OF 76

DEC. 1987

FILE NO. H-18-28350

REPAIR PROCEDURES REQUIRED
WHEN PENETRATING REVETMENTS
WITH PILES, CAISSONS AND/OR
PILE CLUSTERS

U.S. ARMY ENGINEERS DISTRICT, NEW ORLEANS
CORPS OF ENGINEERS

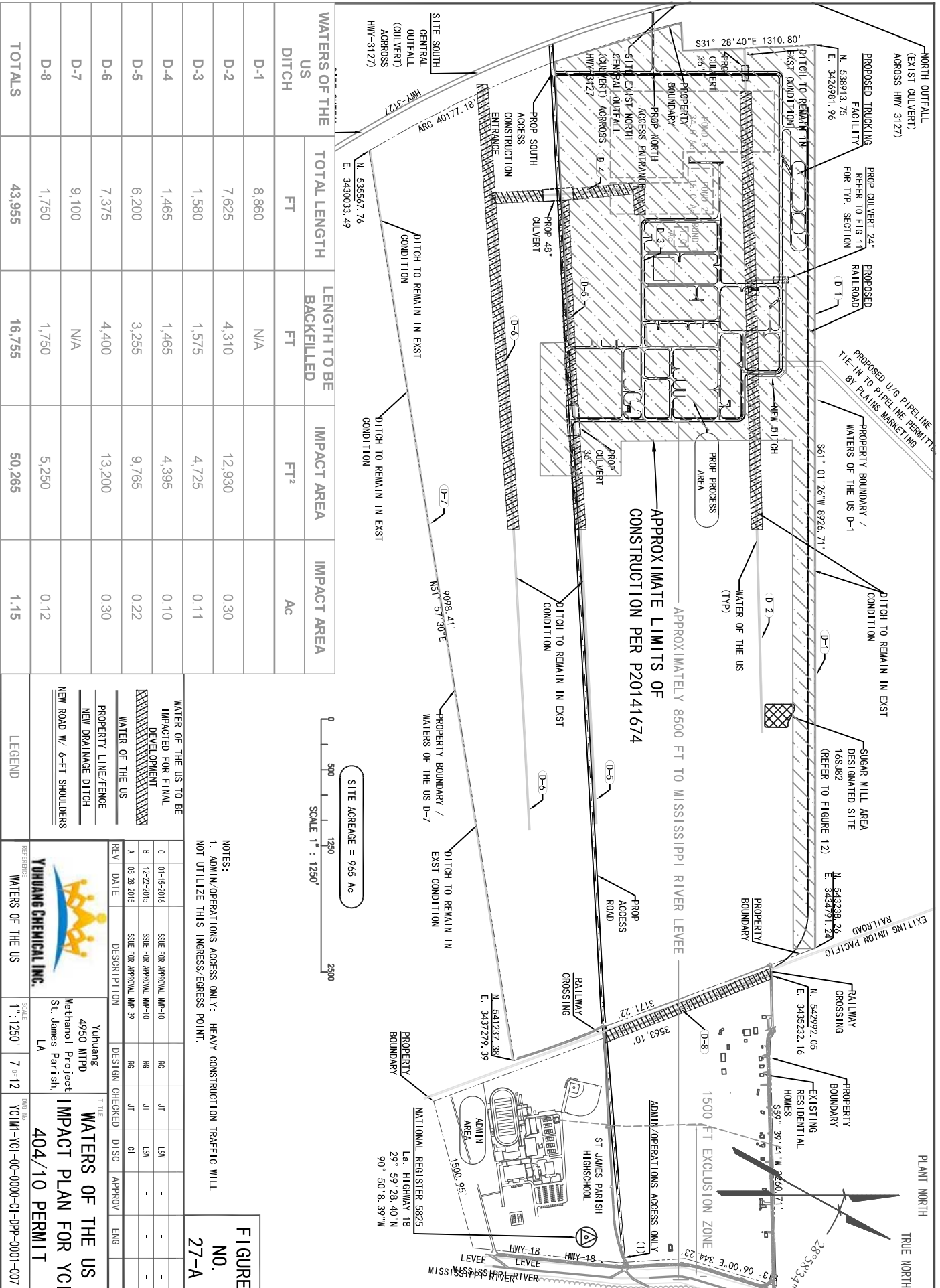


FIGURE NO. 27-A

WATERS OF THE US DITCH	TOTAL LENGTH		LENGTH TO BE BACKFILLED		IMPACT AREA FT ²	IMPACT AREA AC
	FT	FT	FT	FT		
D-1	8,860	N/A				
D-2	7,625	4,310			12,930	0.30
D-3	1,580	1,575			4,725	0.11
D-4	1,465	1,465			4,395	0.10
D-5	6,200	3,255			9,765	0.22
D-6	7,375	4,400			13,200	0.30
D-7	9,100	N/A				
D-8	1,750	1,750			5,250	0.12
TOTALS	43,955	16,755			50,265	1.15

YUHUANG CHEMICAL INC.

4950 WTPD
Methanol Project
St. James Parish,
LA

WATERS OF THE US IMPACT PLAN FOR YCI 404/10 PERMIT

REV	DATE	DESCRIPTION	DESIGN	CHECKED	DISC	APPROV	ENG
0	01-15-2016	ISSUE FOR APPROVAL, NM-10	RG	JT	USM	-	-
B	12-22-2015	ISSUE FOR APPROVAL, NM-10	RG	JT	USM	-	-
A	06-26-2015	ISSUE FOR APPROVAL, NM-39	RG	JT	CI	-	-

SCALE: 1" = 1250' 7 OF 12

PROJECT NO: YCI-M-VCI-00-0000-01-DPP-0001-007