

JOINT PUBLIC NOTICE

March 2, 2020

United States Army Corps of Engineers
New Orleans District
Regulatory Branch
7400 Leake Avenue
New Orleans, Louisiana 70118

(504) 862-1301
Project Manager
Neil T. Gauthier
Neil.T.Gauthier@usace.army.mil
MVN 2014-02629-CM

State of Louisiana
Department of Environmental Quality
Office of Environmental Services
Post Office Box 4313
Baton Rouge, Louisiana 70821-4313

(225) 219-3225
Project Manager
Elizabeth Hill
WQC Application Number
WQC 200220-01

Interested parties are hereby notified that a permit application has been received by the New Orleans District of the US Army Corps of Engineers pursuant to: [X] Section 10 of the Rivers and Harbors Act of March 3, 1899 (30 Stat. 1151; 33 USC 403); and/or [X] Section 404 of the Clean Water Act (86 Stat. 816; 33 USC 1344).

Application has also been made to the Louisiana Department of Environmental Quality, Office of Environmental Services, for a Water Quality Certification (WQC) in accordance with statutory authority contained in LRS 30:2074 A(3) and provisions of Section 401 of the Clean Water Act.

PROPOSED FLOATING DOCK AND LEVEE STABILITY REPAIR IN THE MISSISSIPPI RIVER IN ST. JAMES PARISH

NAME OF APPLICANT: The Mosaic Company, c/o Matrix PDM. Attn: Edward Wiedeman, 3510 N. Causeway Blvd., Suite 515, Metairie, LA 70002.

LOCATION OF WORK: On the left descending bank of the Mississippi River at MP 160.5, above head of passes near Convent, Louisiana, in St. James Parish, within the Lower Mississippi River Basin- Baton Rouge in hydrologic unit (HUC 08070100), as shown on the attached drawings.

CHARACTER OF WORK: The applicant has requested Department of the Army authorization to install pilings for the construction of a floating dock with captive barge guides, breasting dolphins, mooring dolphins, and mooring buoys/anchor. Additionally, approximately 1,900 cubic yards of rip-rap will be placed for revetment repair and approximately 78,000 cubic yards of subaqueous stone ballast downstream of the project in order to address Mississippi River Levee slope stability deficiencies.

A Preliminary analysis has determined that the proposed project would directly impact approximately 3 acres of jurisdictional water bottoms.

The applicant stated that they have designed the project to avoid and minimize direct and secondary adverse impacts to the maximum extent practicable. Any further reduction

would limit the ability to dock ships safely and, therefore deem the project impracticable. There are no wetland impacts associated with this project and mitigation will not be required.

The comment period for the Department of Army will close in **30 days** from the date of this joint public notice. Written comments, including suggestions for modifications or objections to the proposed work, stating reasons thereof, are being solicited from anyone having interest in this permit and/or this WQC request and must be mailed so as to be received before or by the last day of the comment period. Letters concerning the Corps of Engineers permit application must reference the applicant's name and the Permit Application Number, and be mailed to the Corps of Engineers at the address above, **ATTENTION: REGULATORY BRANCH**. Similar letters concerning the Water Quality Certification must reference the applicant's name and the WQC application number and be mailed to the Louisiana Department of Environmental Quality at the address above.

The application for this proposed project is on file with the Louisiana Department of Environmental Quality and may be examined during weekdays between 8:00 a.m. and 4:30 p.m. Copies may be obtained upon payment of costs of reproduction.

Corps of Engineers Permit Criteria

The decision whether to issue a permit will be based on an evaluation of the probable impacts, including cumulative impacts of the proposed activity on the public interest. That decision will reflect the national concern for both protection and utilization of important resources. The benefit which reasonably may be expected to accrue from the proposal must be balanced against its reasonably foreseeable detriments. All factors which may be relevant to the proposal will be considered including the cumulative effects thereof; among those are conservation, economics, aesthetics, general environmental concerns, wetlands, historic properties, fish and wildlife values, flood hazards, floodplain values, land use, navigation, shoreline erosion and accretion, recreation, water supply and conservation, water quality, energy needs, safety, food and fiber production, mineral needs, considerations of property ownership and, in general, the needs and welfare of the people.

The US Army Corps of Engineers is soliciting comments from the public, federal, state, and local agencies and officials, Indian Tribes, and other interested parties in order to consider and evaluate the impacts of this proposed activity. Any comments received will be considered by the US Army Corps of Engineers to determine whether to make, modify, condition, or deny a permit for this proposal. To make this decision, comments are used to assess impacts on endangered species, historic properties, water quality, general environmental effects, and other public interest factors listed above. Comments are used in the preparation of an Environmental Assessment and/or an Environmental Impact Statement pursuant to the National Environmental Policy Act. Comments are also used to determine the need for a public hearing and to determine the overall public interest of the proposed activity.

The New Orleans District is unaware of properties listed on the National Register of Historic Places near the proposed work. The possibility exists that the proposed work may damage or destroy presently unknown archeological, scientific, prehistorical, historical

sites, or data. Copies of this notice are being sent to the State Archeologist and State Historic Preservation Officer.

Our initial finding is that the proposed work would not affect any species, nor affect any habitat designated as critical to the survival and recovery of such species, listed as endangered by the U.S. Department of Commerce.

Our initial finding is that the proposed work would not affect any species, nor affect any habitat designated as critical to the survival and recovery of such species, listed as endangered by the U.S. Department of Interior. Utilizing Standard Local Operating Procedure for Endangered Species in Louisiana (SLOPES), dated October 22, 2014, between the U.S. Army Corps of Engineers, New Orleans and U.S. Fish and Wildlife Service, Ecological Services Office, the Corps has determined that the proposed activity is not likely to adversely affect the Pallid Sturgeon base on the nature of the activity.

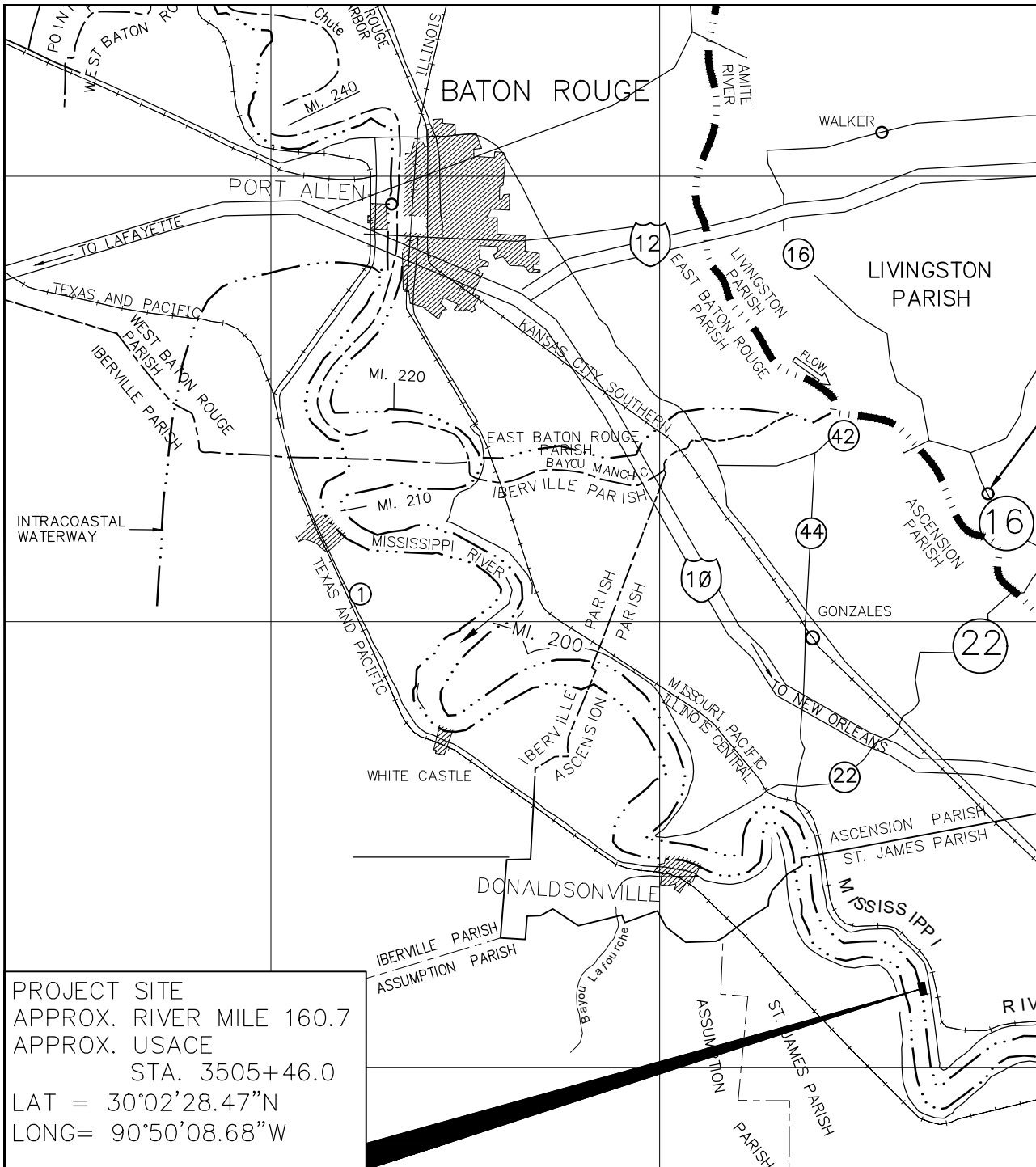
This notice initiates the Essential Fish Habitat (EFH) consultation requirements of the Magnuson-Stevens Fishery Conservation and Management Act. The applicant's proposal would result in the destruction or alteration of up to 0 acres of EFH utilized by various life stages of red drum and penaeid shrimp. Our initial determination is that the proposed action would not have a substantial adverse impact on EFH or federally managed fisheries in the Gulf of Mexico. Our final determination relative to project impacts and the need for mitigation measures is subject to review by and coordination with the National Marine Fisheries Service.

If the proposed work involves deposits of dredged or fill material into navigable waters, the evaluation of the probable impacts will include the application of guidelines established by the Administrator of the Environmental Protection Agency. Also, a certification that the proposed activity will not violate water quality standards will be required from the Department of Environmental Quality, Office of Environmental Services before a permit is issued.

Any person may request, in writing, within the comment period specified in this notice, that a public hearing be held to consider this application. Requests for public hearings shall state, with particularity, the reasons for holding a public hearing. You are requested to communicate the information contained in this notice to any other parties whom you deem likely to have interest in the matter.

The applicant has certified that the proposed activity described in the application complies with and will be conducted in a manner that is consistent with the Louisiana Coastal Resources Program. The Department of the Army permit will not be issued unless the applicant received approval or a waiver of the Coastal Use Permit by the Department of Natural Resources.

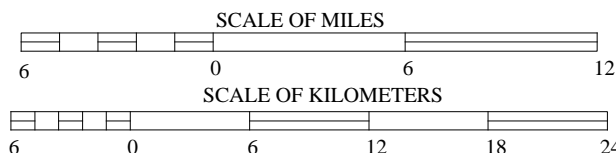
JOHN M. HERMAN
Chief, Central Evaluation Section
Regulatory Branch



PROJECT SITE
 APPROX. RIVER MILE 160.7
 APPROX. USACE
 STA. 3505+46.0
 LAT = 30°02'28.47"N
 LONG = 90°50'08.68"W

VICINITY MAP

SCALE 1" = 6 MILES



PRELIMINARY - FOR PERMITTING
 PURPOSES ONLY.
 WILLIAM R. GOHRES P.E. 0036311
 06/17/2019

DRAWN	DATE
LTN	04/15/19
CHECKED	DATE
EAW	04/15/19
APPROVED	DATE
WRG	06/14/19

SCALE AS NOTED

PROJ NO 540920075

DRAWING NO

VM0001

REV

B

CONFIDENTIALITY
 STATEMENT

THIS DOCUMENT AND THE WORKS AND/OR
 INFORMATION CONTAINED HEREIN ARE THE
 PROPERTY OF MATRIX PDM ENGINEERING, INC. AND SHALL
 REMAIN THE PROPERTY OF MATRIX PDM ENGINEERING, INC.
 AND SHALL NOT BE REPRODUCED, COPIED, OR
 TRANSMITTED IN ANY FORM OR BY ANY MEANS,
 ELECTRONIC OR MECHANICAL, INCLUDING
 PHOTOCOPYING, RECORDING, OR BY ANY
 INFORMATION STORAGE AND RETRIEVAL
 SYSTEM, WITHOUT MATRIX PDM ENGINEERING, INC.'S
 EXPRESS WRITTEN PERMISSION.

MATRIX PDM
 ENGINEERING



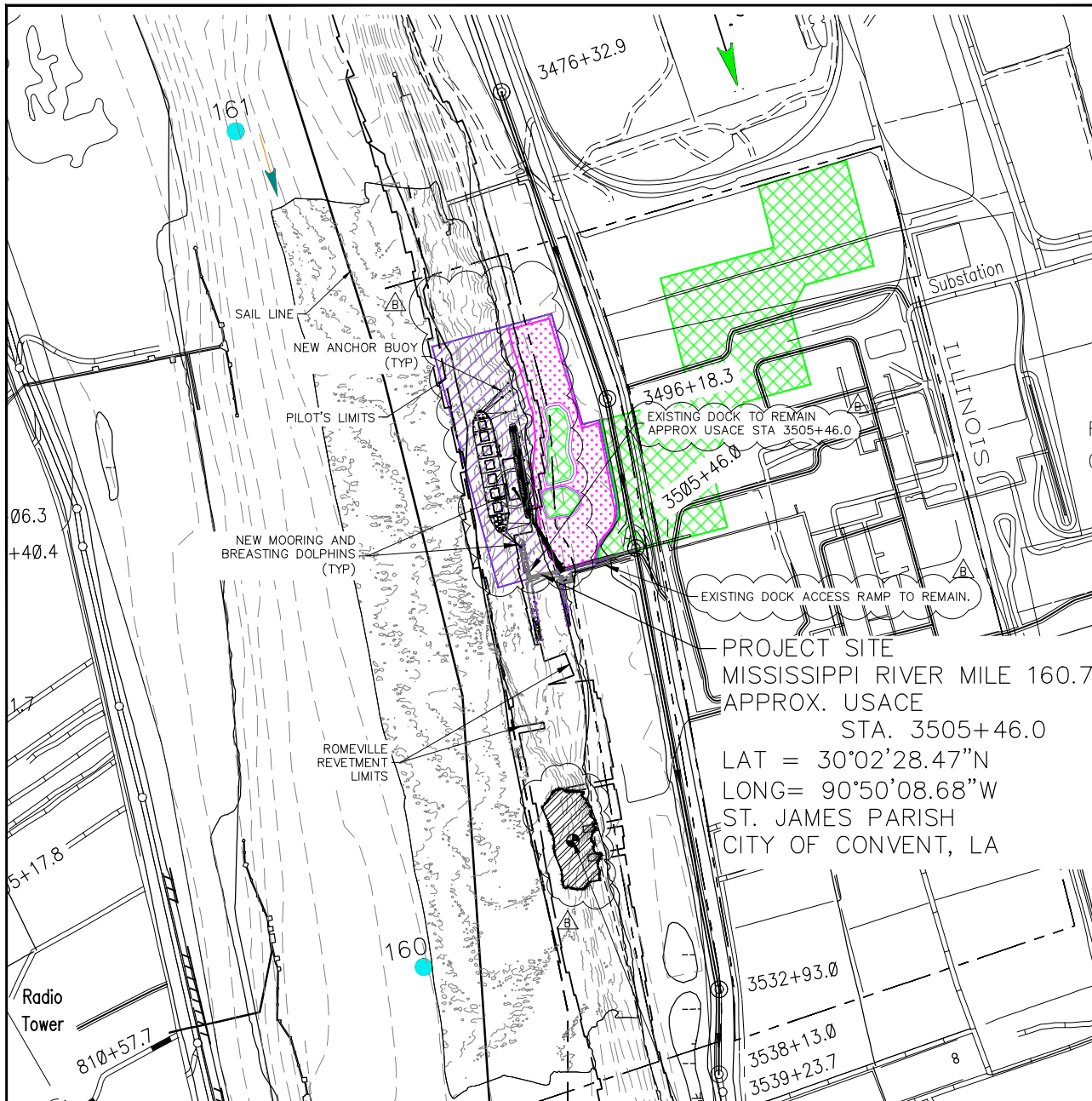
MOSAIC FERTILIZER, LLC
 UNCLE SAM PLANT
 PROPOSED FLOATING DOCK

LOUISIANA

CONVENT

VICINITY MAP

REV	DATE	BY	DESCRIPTION
1	06/17/19	AML	RE-ISSUED FOR PERMIT
2	04/15/19	LTN	ISSUED FOR PERMIT
3			
4			
5			
6			
7			
8			
9			
10			
11			
12			
13			
14			
15			
16			
17			
18			
19			
20			
21			
22			
23			
24			
25			
26			
27			
28			
29			
30			
31			
32			
33			
34			
35			
36			
37			
38			
39			
40			
41			
42			
43			
44			
45			
46			
47			
48			
49			
50			
51			
52			
53			
54			
55			
56			
57			
58			
59			
60			
61			
62			
63			
64			
65			
66			
67			
68			
69			
70			
71			
72			
73			
74			
75			
76			
77			
78			
79			
80			
81			
82			
83			
84			
85			
86			
87			
88			
89			
90			
91			
92			
93			
94			
95			
96			
97			
98			
99			
100			



NOTE:

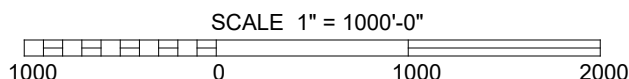
1. EXISTING CONDITIONS IN AREA OF NEW WORK GENERATED USING HYDRO SURVEY PERFORMED BY ARC SURVEYING AND MAPPING, INC, DATED 10/29/18.
2. REMAINDER OF EXISTING CONDITIONS GENERATED USING USACE HYDROGRAPHIC SURVEY DATA DATED 2013, REFERENCE SHEET 39.

USACE LEGEND

- WATERS OF THE US
- WETLAND
- NON-WETLAND
- AREA OF STONE PLACEMENT

VICINITY MAP

SCALE 1" = 1000'-0"



PRELIMINARY - FOR PERMITTING PURPOSES ONLY.
WILLIAM R. GOHRES P.E. 0036311
06/17/2019

DRAWN	DATE
LTN	04/15/19
CHECKED	DATE
EAW	04/15/19
APPROVED	DATE
WRG	06/14/19

SCALE AS NOTED

PROJ NO 540920075

DRAWING NO

VM0002

REV

B

MOSAIC FERTILIZER, LLC
UNCLE SAM PLANT
PROPOSED FLOATING DOCK

ENLARGED VICINITY MAP

CONVENT, LOUISIANA

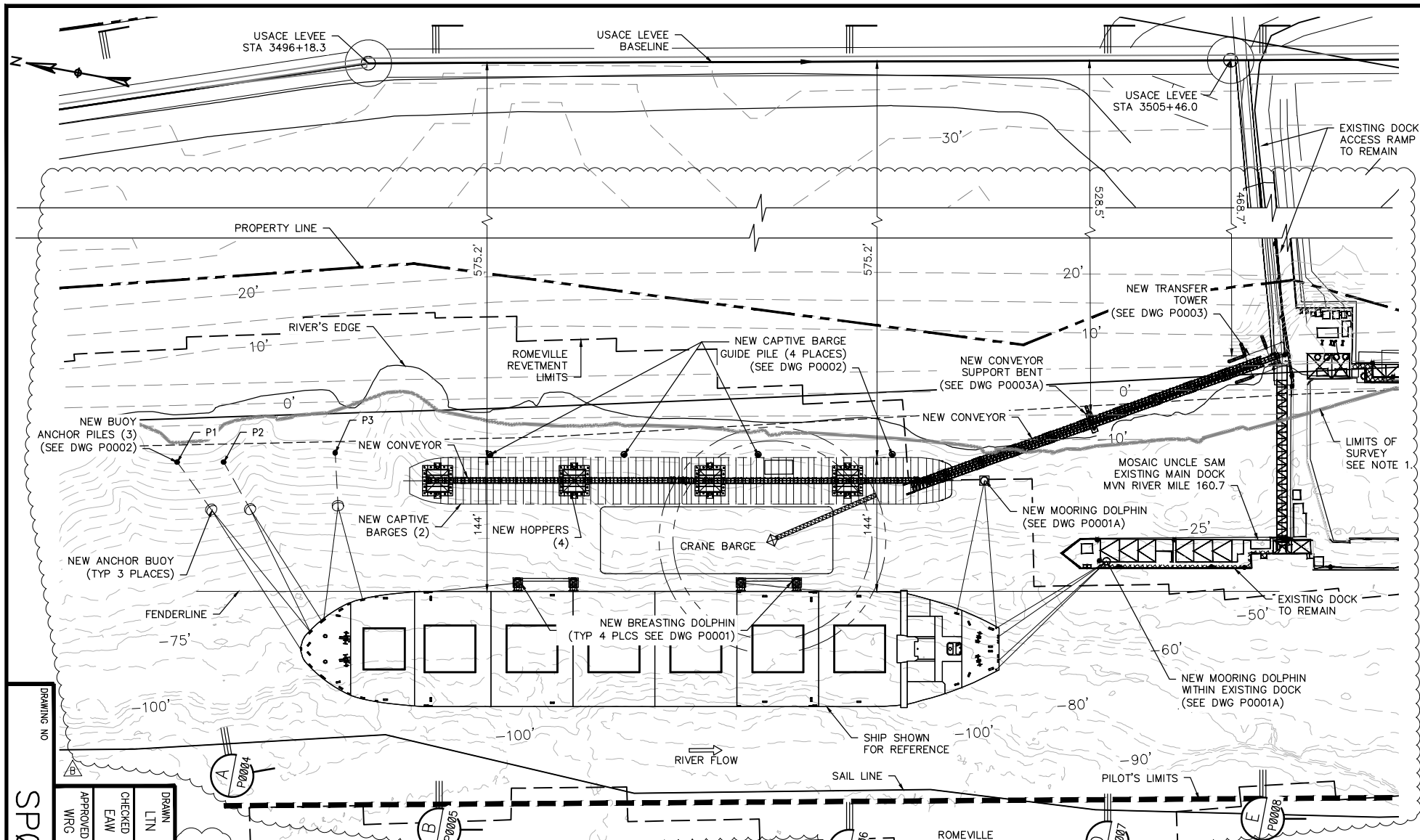
MISSISSIPPI RIVER MILE 160.7
APPROX. USACE
STA. 3505+46.0
LAT = 30°02'28.47"N
LONG = 90°50'08.68"W
ST. JAMES PARISH
CITY OF CONVENT, LA

CONFIDENTIALITY
STATEMENT

THIS DOCUMENT AND THE WORKS AND/OR PRODUCTS THEREOF ARE THE PROPERTY OF MATRIX PDM ENGINEERING, INC. AND SHALL REMAIN THE PROPERTY OF MATRIX PDM ENGINEERING, INC. AND SHALL NOT BE REPRODUCED, COPIED, OR TRANSMITTED IN ANY FORM OR BY ANY MEANS, ELECTRONIC OR MECHANICAL, INCLUDING PHOTOCOPYING, RECORDING, OR BY ANY INFORMATION STORAGE AND RETRIEVAL SYSTEM, WITHOUT THE WRITTEN PERMISSION OF MATRIX PDM ENGINEERING, INC.

MATRIX PDM
ENGINEERING





- NOTE:**
1. EXISTING CONDITIONS IN AREA OF NEW WORK GENERATED USING HYDRO SURVEY PERFORMED BY ARC SURVEYING AND MAPPING, INC. DATED 10/29/18.
 2. REMAINDER OF EXISTING CONDITIONS GENERATED USING USACE HYDROGRAPHIC SURVEY DATA DATED 2013, REFERENCE SHEET 39.

PRELIMINARY - FOR PERMITTING PURPOSES ONLY.
WILLIAM R. GOHRES P.E. 0036311
06/17/2019

SP0001

DRAWN	CHECKED	APPROVED
LTN	EAW	WRC
DATE	DATE	DATE
04/15/19	04/15/19	06/14/19

SCALE																																																																																																																																																																																																																																																																																																																																																																																																																																																																																																																																																																																																																																																																																																																																																																																																																																																																																																																																																																																																																																																																																																																																																																																																																																																																																																																																																																																																																																																																																																																																																																																				</
-------	--	--	--	--	--	--	--	--	--	--	--	--	--	--	--	--	--	--	--	--	--	--	--	--	--	--	--	--	--	--	--	--	--	--	--	--	--	--	--	--	--	--	--	--	--	--	--	--	--	--	--	--	--	--	--	--	--	--	--	--	--	--	--	--	--	--	--	--	--	--	--	--	--	--	--	--	--	--	--	--	--	--	--	--	--	--	--	--	--	--	--	--	--	--	--	--	--	--	--	--	--	--	--	--	--	--	--	--	--	--	--	--	--	--	--	--	--	--	--	--	--	--	--	--	--	--	--	--	--	--	--	--	--	--	--	--	--	--	--	--	--	--	--	--	--	--	--	--	--	--	--	--	--	--	--	--	--	--	--	--	--	--	--	--	--	--	--	--	--	--	--	--	--	--	--	--	--	--	--	--	--	--	--	--	--	--	--	--	--	--	--	--	--	--	--	--	--	--	--	--	--	--	--	--	--	--	--	--	--	--	--	--	--	--	--	--	--	--	--	--	--	--	--	--	--	--	--	--	--	--	--	--	--	--	--	--	--	--	--	--	--	--	--	--	--	--	--	--	--	--	--	--	--	--	--	--	--	--	--	--	--	--	--	--	--	--	--	--	--	--	--	--	--	--	--	--	--	--	--	--	--	--	--	--	--	--	--	--	--	--	--	--	--	--	--	--	--	--	--	--	--	--	--	--	--	--	--	--	--	--	--	--	--	--	--	--	--	--	--	--	--	--	--	--	--	--	--	--	--	--	--	--	--	--	--	--	--	--	--	--	--	--	--	--	--	--	--	--	--	--	--	--	--	--	--	--	--	--	--	--	--	--	--	--	--	--	--	--	--	--	--	--	--	--	--	--	--	--	--	--	--	--	--	--	--	--	--	--	--	--	--	--	--	--	--	--	--	--	--	--	--	--	--	--	--	--	--	--	--	--	--	--	--	--	--	--	--	--	--	--	--	--	--	--	--	--	--	--	--	--	--	--	--	--	--	--	--	--	--	--	--	--	--	--	--	--	--	--	--	--	--	--	--	--	--	--	--	--	--	--	--	--	--	--	--	--	--	--	--	--	--	--	--	--	--	--	--	--	--	--	--	--	--	--	--	--	--	--	--	--	--	--	--	--	--	--	--	--	--	--	--	--	--	--	--	--	--	--	--	--	--	--	--	--	--	--	--	--	--	--	--	--	--	--	--	--	--	--	--	--	--	--	--	--	--	--	--	--	--	--	--	--	--	--	--	--	--	--	--	--	--	--	--	--	--	--	--	--	--	--	--	--	--	--	--	--	--	--	--	--	--	--	--	--	--	--	--	--	--	--	--	--	--	--	--	--	--	--	--	--	--	--	--	--	--	--	--	--	--	--	--	--	--	--	--	--	--	--	--	--	--	--	--	--	--	--	--	--	--	--	--	--	--	--	--	--	--	--	--	--	--	--	--	--	--	--	--	--	--	--	--	--	--	--	--	--	--	--	--	--	--	--	--	--	--	--	--	--	--	--	--	--	--	--	--	--	--	--	--	--	--	--	--	--	--	--	--	--	--	--	--	--	--	--	--	--	--	--	--	--	--	--	--	--	--	--	--	--	--	--	--	--	--	--	--	--	--	--	--	--	--	--	--	--	--	--	--	--	--	--	--	--	--	--	--	--	--	--	--	--	--	--	--	--	--	--	--	--	--	--	--	--	--	--	--	--	--	--	--	--	--	--	--	--	--	--	--	--	--	--	--	--	--	--	--	--	--	--	--	--	--	--	--	--	--	--	--	--	--	--	--	--	--	--	--	--	--	--	--	--	--	--	--	--	--	--	--	--	--	--	--	--	--	--	--	--	--	--	--	--	--	--	--	--	--	--	--	--	--	--	--	--	--	--	--	--	--	--	--	--	--	--	--	--	--	--	--	--	--	--	--	--	--	--	--	--	--	--	--	--	--	--	--	--	--	--	--	--	--	--	--	--	--	--	--	--	--	--	--	--	--	--	--	--	--	--	--	--	--	--	--	--	--	--	--	--	--	--	--	--	--	--	--	--	--	--	--	--	--	--	--	--	--	--	--	--	--	--	--	--	--	--	--	--	--	--	--	--	--	--	--	--	--	--	--	--	--	--	--	--	--	--	--	--	--	--	--	--	--	--	--	--	--	--	--	--	--	--	--	--	--	--	--	--	--	--	--	--	--	--	--	--	--	--	--	--	--	--	--	--	--	--	--	--	--	--	--	--	--	--	--	--	--	--	--	--	--	--	--	--	--	--	--	--	--	--	--	--	--	--	--	--	--	--	--	--	--	--	--	--	--	--	--	--	--	--	--	--	--	--	--	--	--	--	--	--	--	--	--	--	--	--	--	--	--	--	--	--	--	--	--	--	--	--	--	--	--	--	--	--	--	--	--	--	--	--	--	--	--	--	--	--	--	--	--	--	--	--	--	--	--	--	--	--	--	--	--	--	--	--	--	--	--	--	--	--	--	--	--	--	--	--	--	--	--	--	--	--	--	--	--	--	--	--	--	--	--	--	--	--	--	--	--	--	--	--	--	--	--	--	--	--	--	--	--	--	--	--	--	--	--	--	--	--	--	--	--	--	--	--	--	--	--	--	--	--	--	--	--	--	--	--	--	--	--	--	--	--	--	--	--	--	--	--	--	--	--	--	--	--	--	--	--	--	--	--	--	--	--	--	--	--	--	--	--	--	--	--	--	--	--	--	--	--	--	--	--	--	--	--	--	--	--	--	--	--	--	--	--	--	--	--	--	--	--	--	--	--	--	--	--	--	--	--	--	--	--	--	--	--	--	--	--	--	--	--	--	--	--	--	--	--	--	--	--	--	--	--	--	--	--	--	--	--	--	--	--	--	--	--	--	--	--	--	--	--	--	--	--	--	--	--	--	--	--	--	--	--	--	--	--	--	--	--	--	--	--	--	--	--	--	--	--	--	--	--	--	--	--	--	--	--	--	--	--	--	--	--	--	--	--	--	--	--	--	--	--	--	--	--	--	--	--	--	--	--	--	--	--	--	--	--	--	--	--	--	--	--	--	--	--	--	--	--	--	--	--	--	--	--	--	--	--	--	--	--	--	--	--	--	--	--	--	--	--	--	--	--	--	--	--	--	--	--	--	--	--	--	--	--	--	--	--	--	--	--	--	--	--	--	--	--	--	--	--	--	--	--	--	--	--	--	--	--	--	--	--	--	--	--	--	--	--	--	--	--	--	--	--	--	--	--	--	--	--	--	--	--	--	--	--	--	--	--	--	--	--	--	--	--	--	--	--	--	--	--	--	--	--	--	--	--	--	--	--	--	--	--	--	--	--	--	--	--	--	--	--	--	--	--	--	--	--	--	--	--	--	--	--	--	--	--	--	--	--	--	--	--	--	--	--	--	--	--	--	--	--	--	--	--	--	--	--	--	--	--	--	--	--	--	--	--	--	--	--	--	--	--	--	--	--	--	--	----

MOSAIC FERTILIZER, LLC
UNCLE SAM PLANT
PROPOSED FLOATING DOCK
LOUISIANA

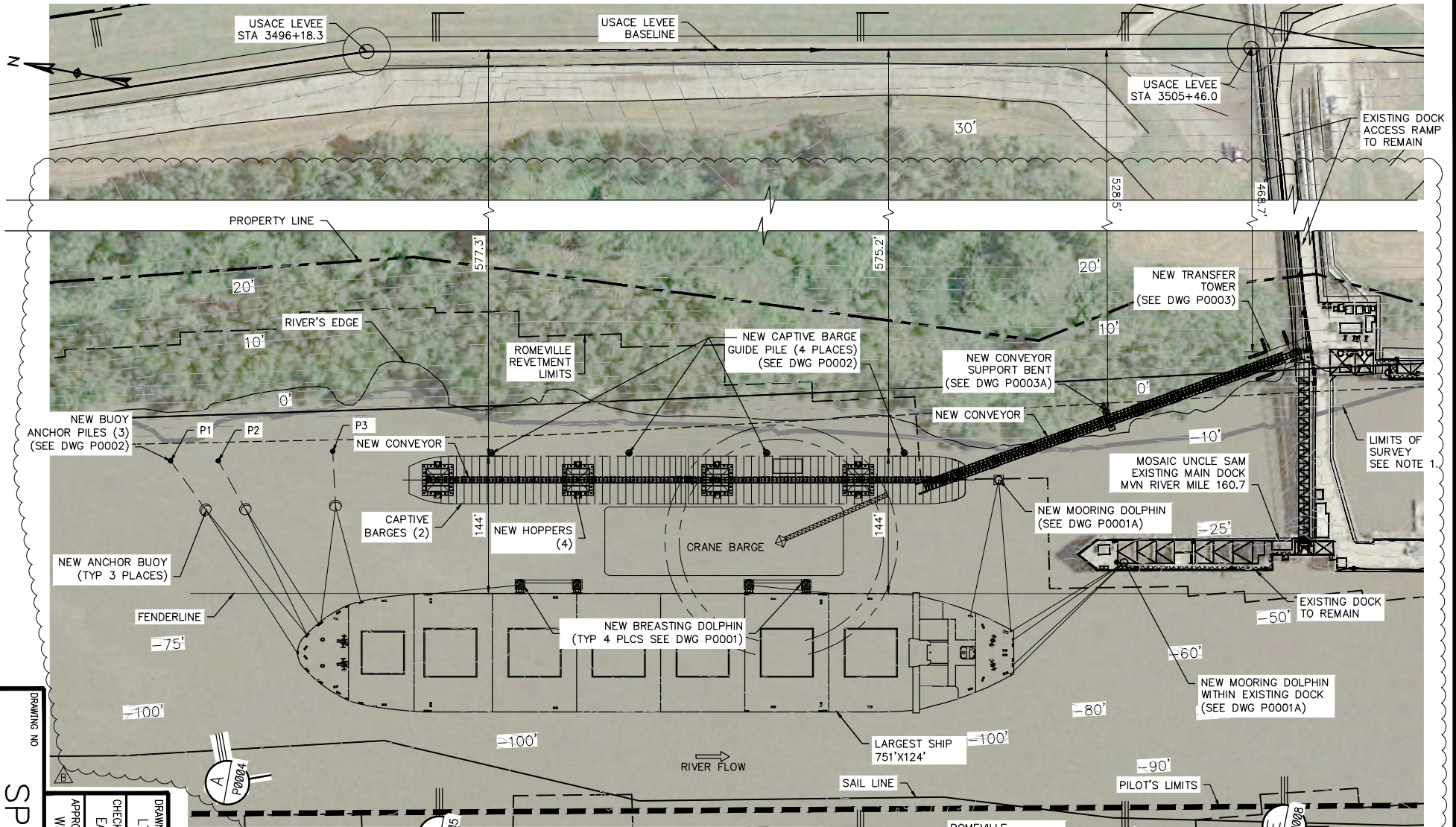
PROPOSED ENLARGED SITE PLAN



MATRIX PDM
ENGINEERING

CONFIDENTIALITY STATEMENT

THIS DOCUMENT AND THE WORKS AND/OR INFORMATION CONTAINED THEREIN ARE THE CONFIDENTIAL AND PROPRIETARY PROPERTY OF MATRIX PDM ENGINEERING, INC. AND SHALL BE USED ONLY FOR THE INTENDED PURPOSE AND PROJECT. IT MAY NOT BE COPIED IN WHOLE OR IN PART, PARTS MAY NOT BE REPRODUCED FROM THE DOCUMENT, AND THE INFORMATION THEREIN MAY NOT BE DISCLOSED WITHOUT MATRIX PDM ENGINEERING, INC.'S EXPRESS, WRITTEN PERMISSION.



DRAWING NO
SP0001A

REV
B

APPROVED	CHECKED	DRAWN
WRC	EAW	LTN
DATE	DATE	DATE
06/14/19	04/15/19	04/15/19

NOTE:

1. EXISTING CONDITIONS IN AREA OF NEW WORK GENERATED USING HYDRO SURVEY PERFORMED BY ARC SURVEYING AND MAPPING, INC, DATED 10/29/18.
2. REMAINDER OF EXISTING CONDITIONS GENERATED USING USACE HYDROGRAPHIC SURVEY DATA DATED 2013, REFERENCE SHEET 39.
3. AERIAL PHOTO IS FROM GOOGLE EARTH DATED 10/20/2016.

PROJECT SITE PLAN

1"=150'-0"

SCALE OF FEET

MOSAIC FERTILIZER, LLC
UNCLE SAM PLANT

PROPOSED FLOATING DOCK

PROPOSED ENLARGED SITE PLAN
WITH IMAGE

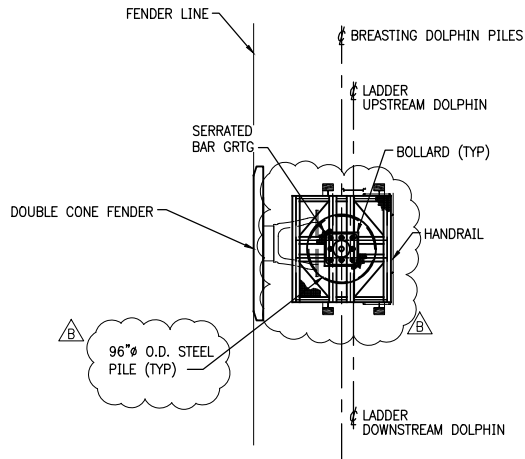
PRELIMINARY - FOR PERMITTING
PURPOSES ONLY.
WILLIAM R. GOHRES P.E. 0036311
06/17/2019

CONFIDENTIALITY
STATEMENT

THIS DOCUMENT AND THE WORKS AND/OR
INFORMATION CONTAINED THEREIN ARE THE
CONFIDENTIAL AND PROPRIETARY PROPERTY OF
MATRIX PDM ENGINEERING, INC. AND SHALL
BE USED ONLY FOR THE INTENDED PURPOSE
AND PROJECT. IT MAY NOT BE COPIED IN
WHOLE OR IN PART, PARTS MAY NOT BE
REPRODUCED FROM THE DOCUMENT, AND THE
INFORMATION THEREIN MAY NOT BE DISCLOSED
WITHOUT MATRIX PDM ENGINEERING, INC.'S
EXPRESS, WRITTEN PERMISSION.

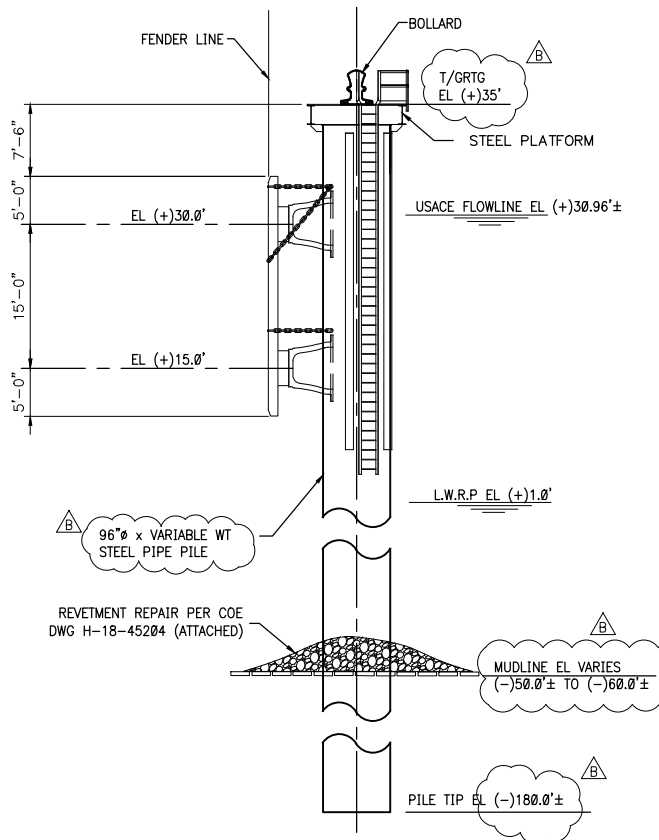


MATRIX PDM
ENGINEERING



BREASTING DOLPHIN PLAN

N.T.S.



BREASTING DOLPHIN ELEVATION

N.T.S.

• 4 REQUIRED

CONFIDENTIALITY
STATEMENT

THE DRAWING AND ALL INFORMATION CONTAINED HEREIN ARE THE CONFIDENTIAL AND PROPRIETARY PROPERTY OF MATRIX PDM ENGINEERING, INC. AND SHALL BE KEPT CONFIDENTIAL AND NOT BE LOANED, REPRODUCED, COPIED, OR IN ANY MANNER DISCLOSED TO ANY OTHER PARTY WITHOUT THE WRITTEN PERMISSION OF MATRIX PDM ENGINEERING, INC.



MOSAIC FERTILIZER, LLC
UNCLE SAM PLANT
PROPOSED FLOATING DOCK
LOUISIANA
CONVENT

BREASTING DOLPHIN PILE
PLAN AND ELEVATION

REV	DESCRIPTION	DATE	CHK'D	APP'D
B	RE-ISSUED FOR PERMIT	06/17/19	EAW	WRG
A	ISSUED FOR PERMIT	04/15/19	EAW	EAW

DRAWN	DATE
LTN	04/16/19
CHECKED	DATE
EAW	04/16/19
APPROVED	DATE
WRG	06/14/19

SCALE N.T.S.
PROJ NO 540920075

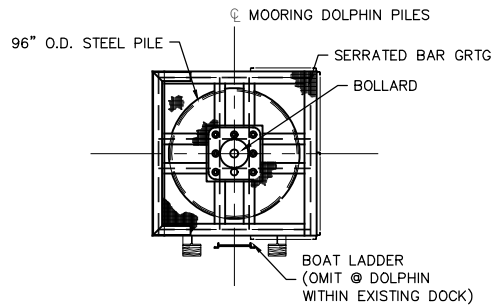
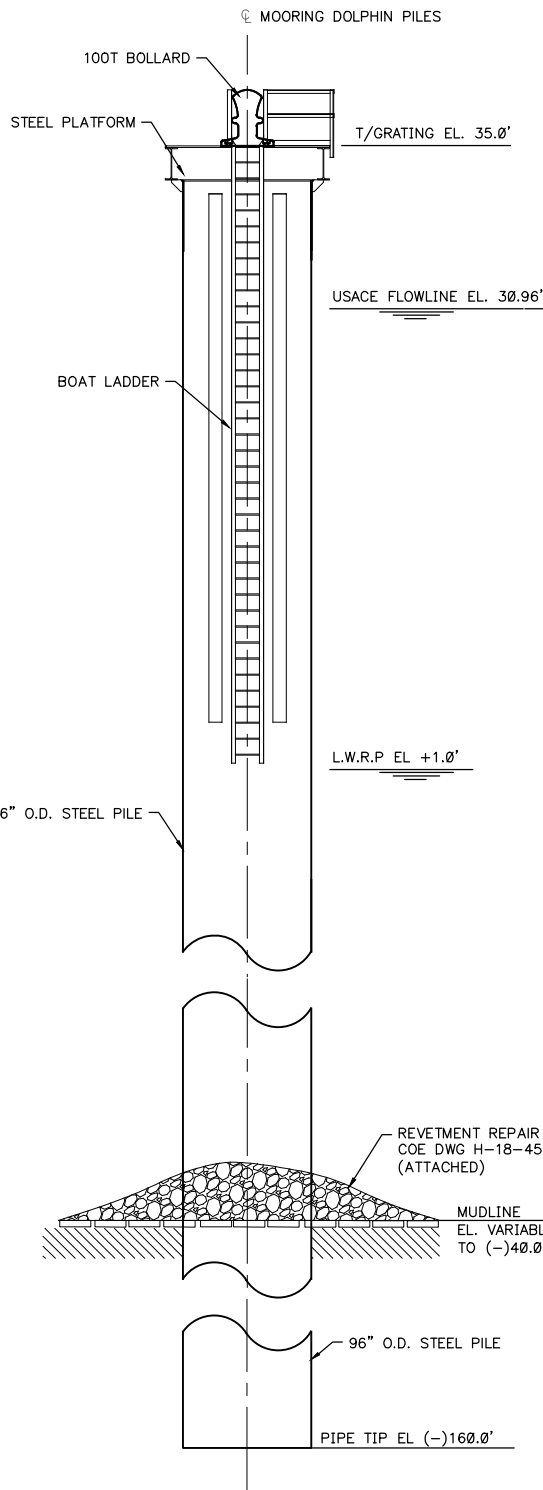
DRAWING NO

P0001

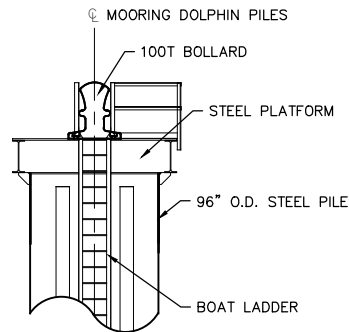
REV

B

PRELIMINARY - FOR PERMITTING
PURPOSES ONLY.
WILLIAM R. GOHRES P.E. 0036311
06/17/2019



MOORING DOLPHIN-ELEVATION N.T.S.



MOORING DOLPHIN-ELEVATION N.T.S.

MOORING DOLPHIN-ELEVATION N.T.S.

PRELIMINARY - FOR PERMITTING
PURPOSES ONLY.(2) REQUIRED
WILLIAM R. GOHRES P.E. 0036311
06/17/2019

DRAWN	DATE
LTN	04/16/19
CHECKED	DATE
EAW	04/16/19
APPROVED	DATE
WRG	06/14/19

SCALE NTS
PROJ NO 540920075

DRAWING NO

P0001A

REV B

CONFIDENTIALITY
STATEMENT

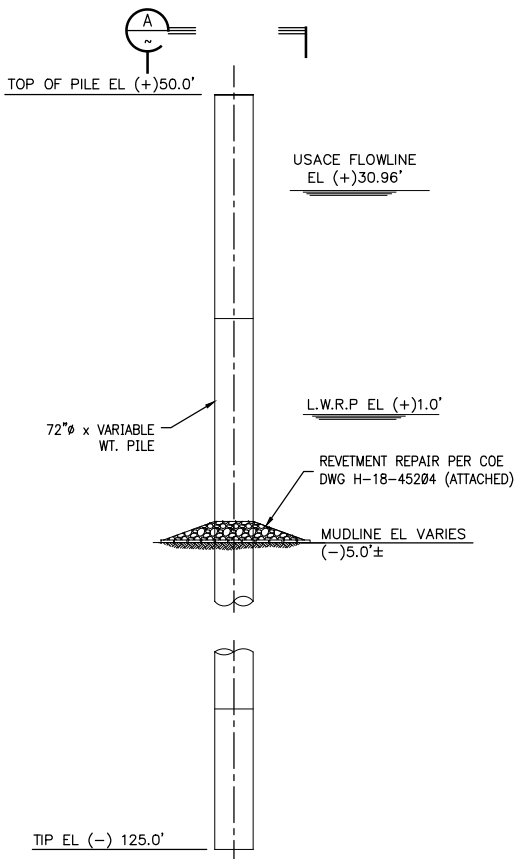
THE DRAWING AND ANY INFORMATION CONTAINED HEREIN ARE THE PROPERTY OF MATRIX PDM ENGINEERING, INC. AND SHALL BE KEPT CONFIDENTIAL AND PROPRIETARY. NO PART OF THIS PROJECT SHALL BE REPRODUCED OR TRANSMITTED IN ANY FORM OR BY ANY MEANS, ELECTRONIC OR MECHANICAL, INCLUDING PHOTOCOPYING, RECORDING, OR BY ANY INFORMATION STORAGE AND RETRIEVAL SYSTEM, WITHOUT MATRIX PDM ENGINEERING, INC.'S EXPRESS WRITTEN PERMISSION.

MATRIX PDM
ENGINEERING



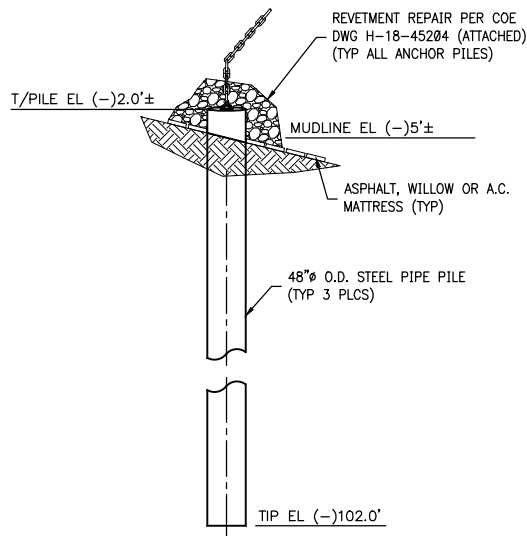
MOSAIC FERTILIZER, LLC
UNCLE SAM PLANT
LOUISIANA
PROPOSED DOCK MODIFICATIONS
MOORING DOLPHIN PILE PLAN,
ELEVATION, AND DETAILS

DATE	CHK'D	APP'D
06/17/19	EAW	WRG
04/15/19	EAW	EAW
BY	DATE	DESCRIPTION
LTN	04/15/19	RE-ISSUED FOR PERMIT
LTN	04/15/19	ISSUED FOR PERMIT



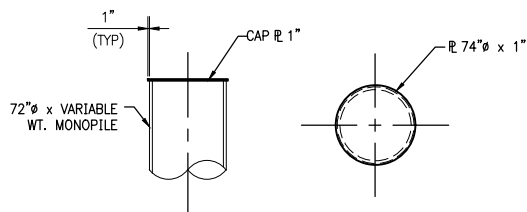
CAPTIVE BARGE GUIDE PILE ELEVATION N.T.S.

(4) REQUIRED



ANCHOR PILE-P1, P2, P3 N.T.S.

(3) REQUIRED



CAP PLATE DETAIL N.T.S.

- NOTES:**
- SEE DWG SP0001A FOR PILE LAYOUT.

CONFIDENTIALITY
STATEMENT

THIS DRAWING AND ALL INFORMATION CONTAINED HEREIN ARE THE CONFIDENTIAL AND PROPRIETARY PROPERTY OF MATRIX PDM ENGINEERING, INC. AND SHALL BE KEPT SECRET AND NOT BE LOANED, REPRODUCED, COPIED, OR IN ANY MANNER DISCLOSED TO ANY OTHER PARTY WITHOUT THE WRITTEN PERMISSION OF MATRIX PDM ENGINEERING, INC.



MOSAIC FERTILIZER, LLC
UNCLE SAM PLANT
PROPOSED FLOATING DOCK
LOUISIANA
CONVENT

CAPTIVE BARGE PILE
AND ANCHOR BUOY PILE
ELEVATIONS AND DETAILS

REV	DESCRIPTION	BY	DATE	CHK'D	APP'D
B	RE-ISSUED FOR PERMIT	AML	06/17/19	EAW	WRG
A	ISSUED FOR PERMIT	LTN	04/15/19	EAW	EAW

DRAWN	DATE
LTN	04/16/19
CHECKED	DATE
EAW	04/16/19
APPROVED	DATE
WRG	06/14/19

SCALE: NTS
PROJ NO: 540920075

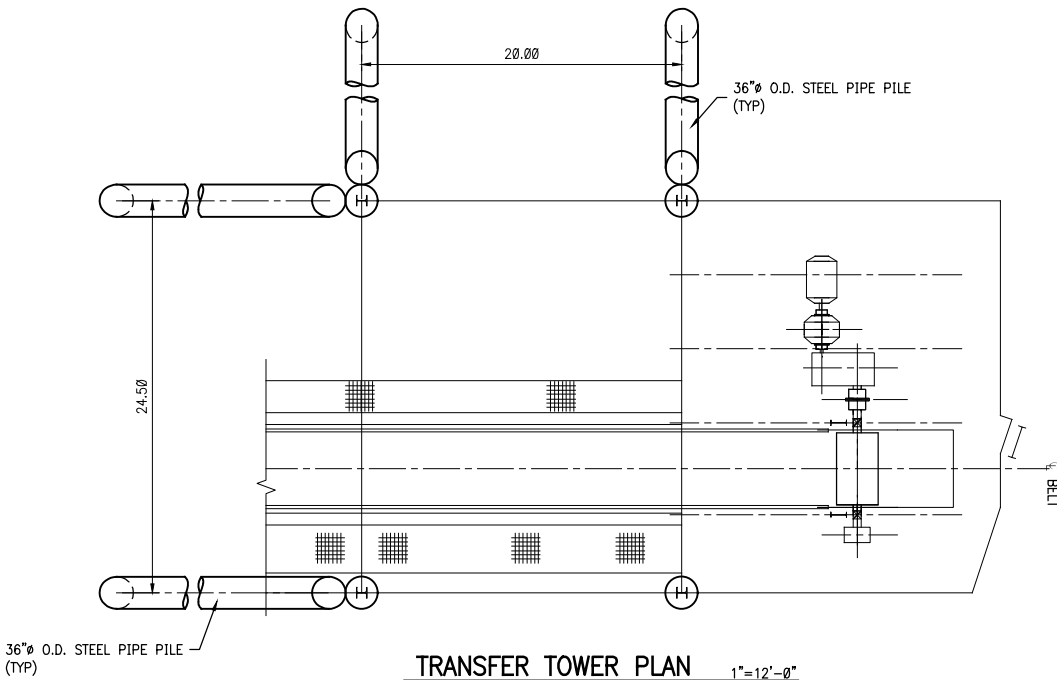
DRAWING NO

P00002

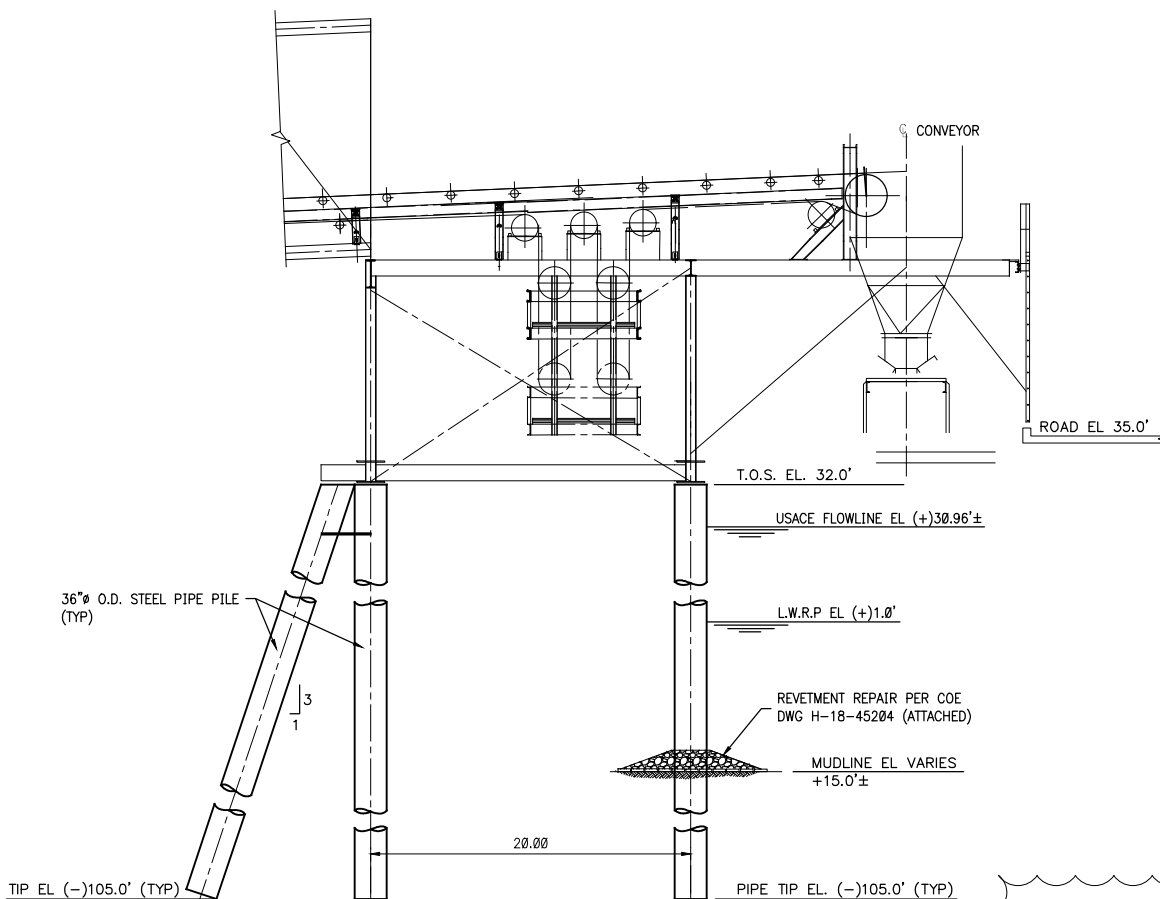
REV

B

PRELIMINARY - FOR PERMITTING
PURPOSES ONLY.
WILLIAM R. GOHRES P.E. 0036311
06/17/2019

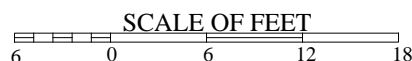


TRANSFER TOWER PLAN 1"=12'-0"



TRANSFER TOWER ELEVATION 1"=12'-0"

PRELIMINARY - FOR PERMITTING PURPOSES ONLY.
WILLIAM R. GOHRES P.E. 0036311
06/17/2019



DRAWN	DATE
LTN	04/16/19
CHECKED	DATE
EAW	04/16/19
APPROVED	DATE
WRG	06/14/19

SCALE AS NOTED
PROJ NO 540920075

DRAWING NO

P0003

REV

B

CONFIDENTIALITY STATEMENT

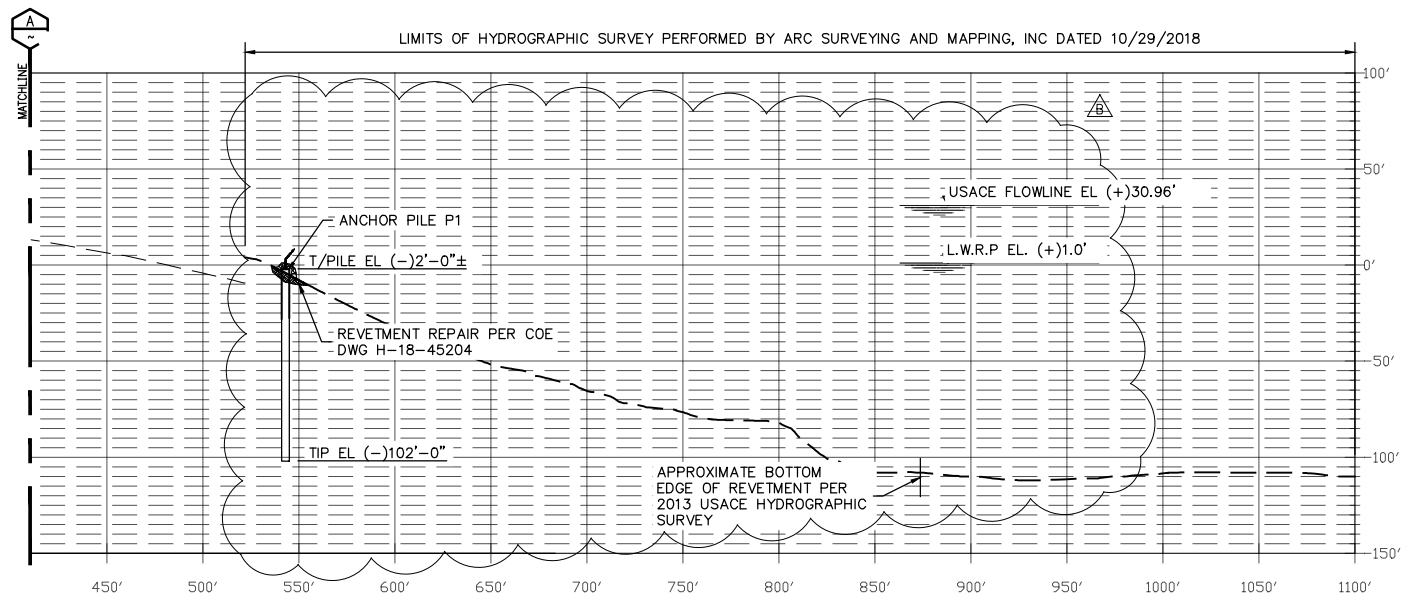
THIS DOCUMENT AND THE INFORMATION CONTAINED HEREIN ARE THE PROPERTY OF MATRIX PDM ENGINEERING, INC. AND SHALL BE KEPT CONFIDENTIAL AND PROPRIETARY. IT IS TO BE USED ONLY FOR THE PROJECT AND PROJECT IT MAY NOT BE COPIED IN WHOLE OR IN PART, REPRODUCED, TRANSMITTED, OR OTHERWISE DISCLOSED WITHOUT MATRIX PDM ENGINEERING, INC.'S EXPRESS WRITTEN PERMISSION.



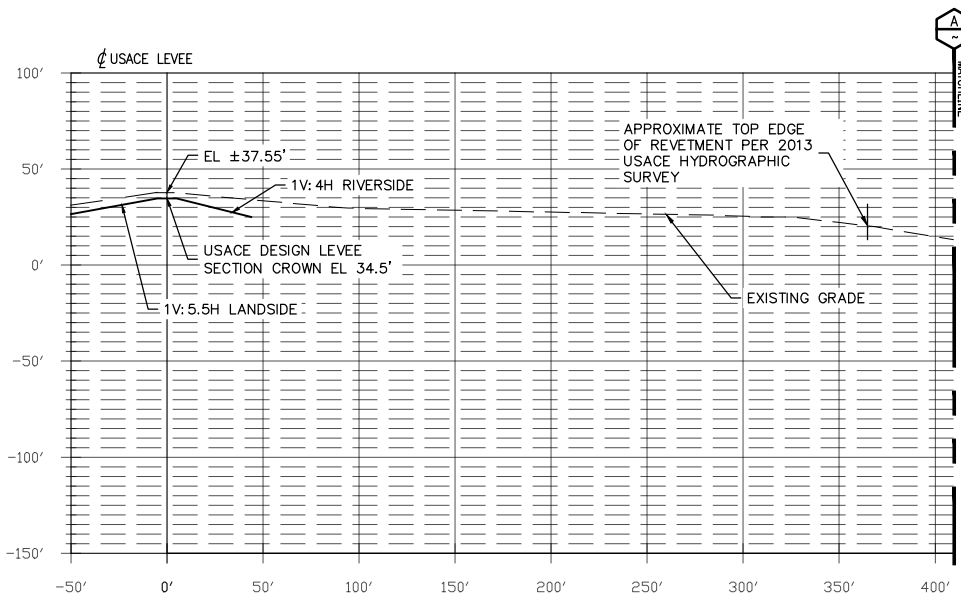
MOSAIC FERTILIZER, LLC
UNCLE SAM PLANT
PROPOSED FLOATING DOCK
LOUISIANA
CONVENT

TRANSFER TOWER
PLAN AND ELEVATION

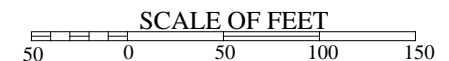
REV	DESCRIPTION	BY	DATE	CHK'D	APP'D
B	RE-ISSUED FOR PERMIT	AVL	06/17/19	EAW	WRG
A	ISSUED FOR PERMIT	LTN	04/15/19	EAW	EAW



NOTE:
EXISTING CONDITIONS GENERATED
USING USACE HYDROGRAPHIC
SURVEY DATA DATED 2013,
UNLESS NOTED OTHERWISE.



A SECTION - APPROX USACE STA 3493+28.82 1"=100'-0"



PRELIMINARY - FOR PERMITTING
PURPOSES ONLY.
WILLIAM R. GOHRES P.E. 0036311
06/17/2019

DRAWING NO

P0004

B

APPROVED	DATE	CHECKED	DATE	DRAWN	DATE
WRG	06/14/19	EAH	04/16/19	LTN	04/16/19

REV	DESCRIPTION	BY	DATE	CHK'D	APP'D
B	RE-ISSUED FOR PERMIT	AML	06/17/19	EAH	WRG
A	ISSUED FOR PERMIT	LTN	04/15/19	EAH	EAH

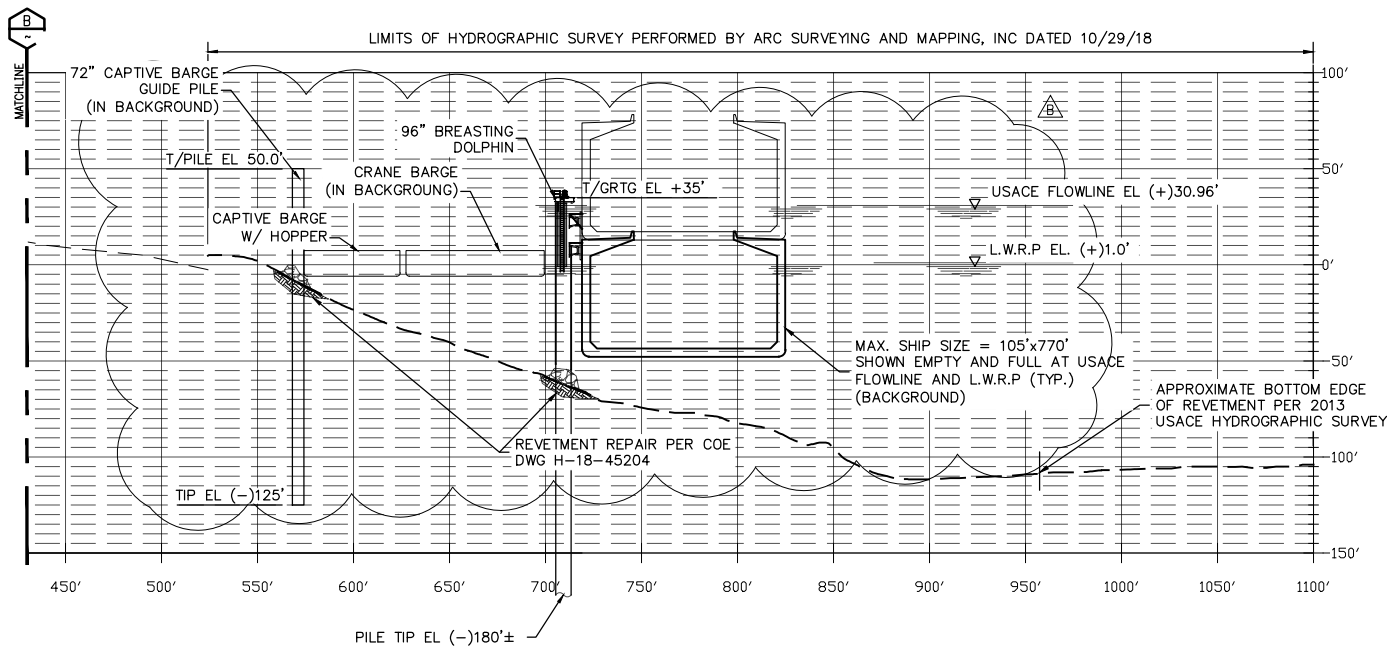
MOSAIC FERTILIZER, LLC
UNCLE SAM PLANT
PROPOSED FLOATING DOCK
SECTION
APPROX USACE STA 3493+28.82



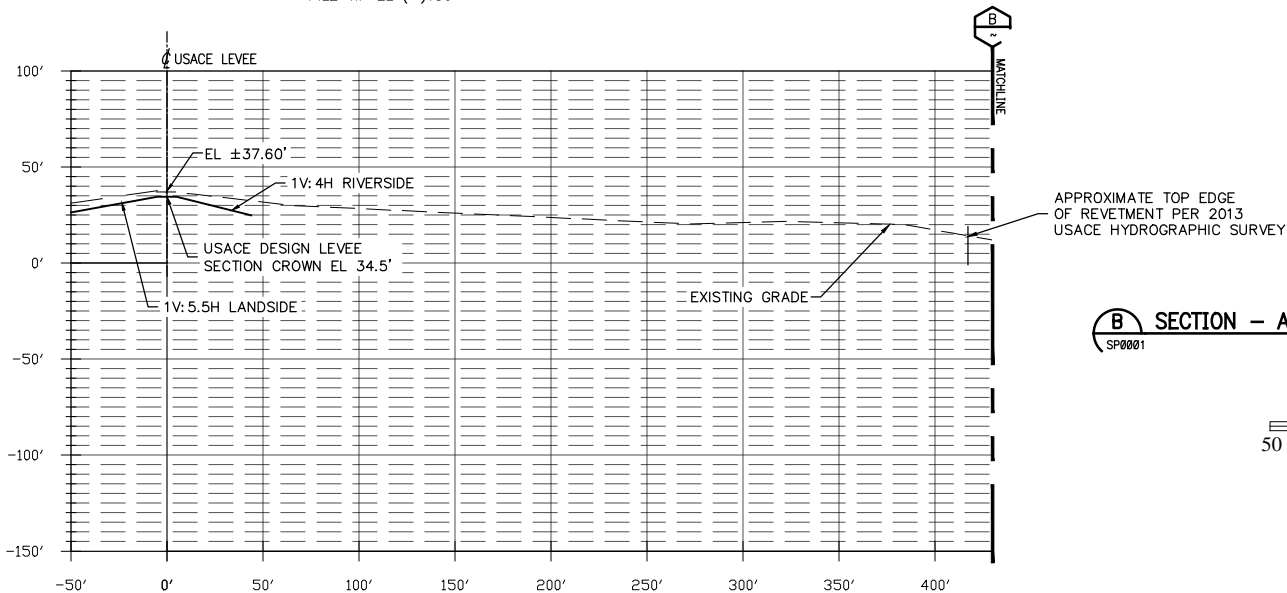
MATRIX PDM
ENGINEERING

CONFIDENTIALITY STATEMENT

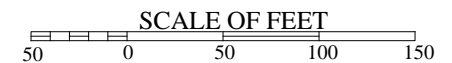
THIS DOCUMENT AND THE WORKS AND/OR
INFORMATION CONTAINED THEREIN ARE THE
CONFIDENTIAL AND PROPRIETARY PROPERTY OF
MATRIX PDM ENGINEERING, INC. AND SHALL
BE USED ONLY FOR THE INTENDED PURPOSE
AND PROJECT. IT MAY NOT BE COPIED IN
WHOLE OR IN PART, PARTS MAY NOT BE
FABRICATED FROM THE DOCUMENT, AND THE
INFORMATION THEREIN MAY NOT BE DISCLOSED
WITHOUT MATRIX PDM ENGINEERING, INC.'S
EXPRESS, WRITTEN PERMISSION.



NOTE:
EXISTING CONDITIONS GENERATED
USING USACE HYDROGRAPHIC
SURVEY DATA DATED 2013,
UNLESS NOTED OTHERWISE.



SECTION - APPROX USACE STA 3496+90.40 1"=100'-0"



PRELIMINARY - FOR PERMITTING
PURPOSES ONLY.
WILLIAM R. GOHRES P.E. 0036311
06/17/2019

DRAWING NO

P0005

DRAWN	DATE
LTN	04/16/19
CHECKED	DATE
EAW	04/16/19
APPROVED	DATE
WRG	06/14/19

PROJ NO 540920075

SCALE AS NOTED

REV	DESCRIPTION	BY	DATE	CHK'D	APP'D
B	RE-ISSUED FOR PERMIT	AML	06/17/19	EAW	WRG
A	ISSUED FOR PERMIT	LTN	04/15/19	EAW	EAW

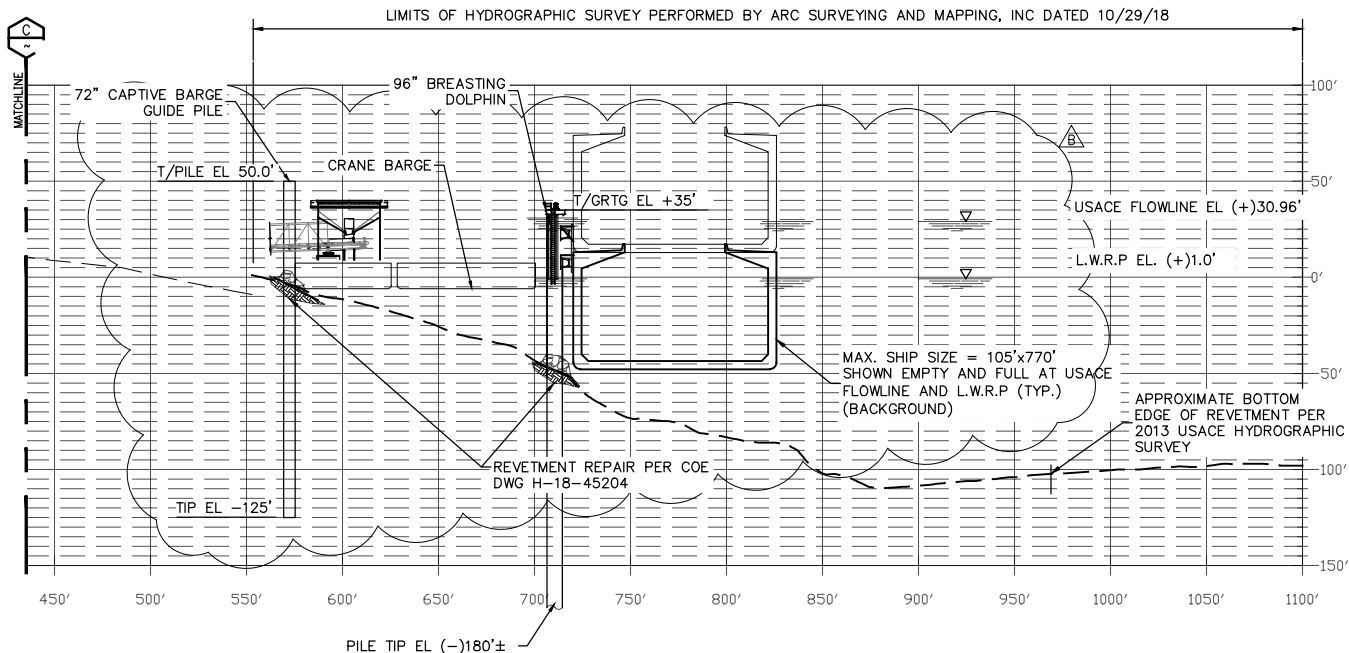
MOSAIC FERTILIZER, LLC
UNCLE SAM PLANT
PROPOSED FLOATING DOCK
LOUISIANA
SECTION
APPROX USACE STA 3496+90.40



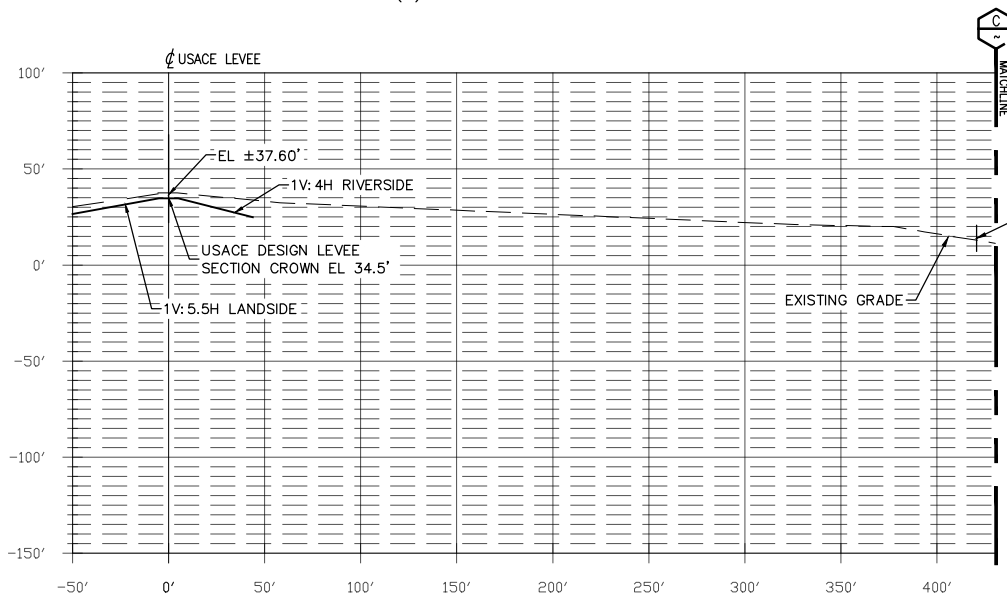
MATRIX PDM
ENGINEERING

CONFIDENTIALITY
STATEMENT

THIS DOCUMENT AND THE WORKS AND/OR
INFORMATION CONTAINED THEREIN ARE THE
CONFIDENTIAL AND PROPRIETARY PROPERTY OF
MATRIX PDM ENGINEERING, INC. AND SHALL
BE USED ONLY FOR THE INTENDED PURPOSE
AND PROJECT. IT MAY NOT BE COPIED IN
WHOLE OR IN PART, PARTS MAY NOT BE
PARAPHRASED FROM THE DOCUMENT, AND THE
INFORMATION THEREIN MAY NOT BE DISCLOSED
WITHOUT MATRIX PDM ENGINEERING, INC.'S
EXPRESS, WRITTEN PERMISSION.

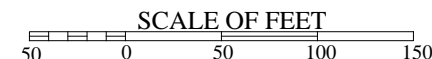


NOTE:
EXISTING CONDITIONS GENERATED
USING USACE HYDROGRAPHIC
SURVEY DATA DATED 2013,
UNLESS NOTED OTHERWISE.



APPROXIMATE TOP
EDGE OF REVETMENT PER
2013 USACE HYDROGRAPHIC
SURVEY

C SECTION - APPROX USACE STA 3501+31.42
SP0001



PRELIMINARY - FOR PERMITTING
PURPOSES ONLY.
WILLIAM R. GOHRES P.E. 0036311
06/17/2019

MOSAIC FERTILIZER, LLC
UNCLE SAM PLANT
PROPOSED FLOATING DOCK
LOUISIANA

SECTION
APPROX USACE STA 3501+31.42



MATRIX PDM
ENGINEERING

CONFIDENTIALITY
STATEMENT

THIS DOCUMENT AND THE WORKS AND/OR
INFORMATION CONTAINED THEREIN ARE THE
CONFIDENTIAL AND PROPRIETARY PROPERTY OF
MATRIX PDM ENGINEERING, INC. AND SHALL
BE USED ONLY FOR THE INTENDED PURPOSE
AND PROJECT. IT MAY NOT BE COPIED IN
WHOLE OR IN PART, PARTS MAY NOT BE
FABRICATED FROM THE DOCUMENT, AND THE
INFORMATION THEREIN MAY NOT BE DISCLOSED
WITHOUT MATRIX PDM ENGINEERING, INC.'S
EXPRESS, WRITTEN PERMISSION.

DRAWING NO

P00006

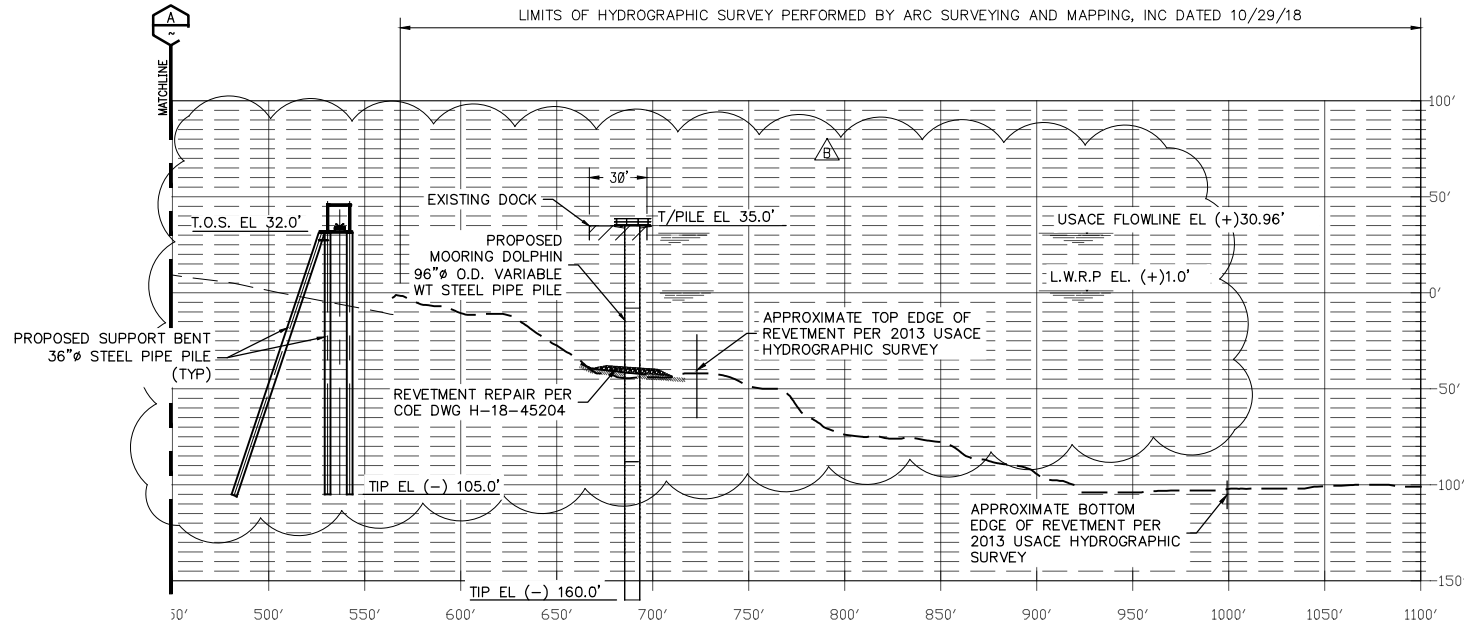
B

DRAWN	CHECKED	APPROVED	DATE
LTN	EAW	WRC	06/14/19
DATE	DATE	DATE	DATE
04/16/19	04/16/19		

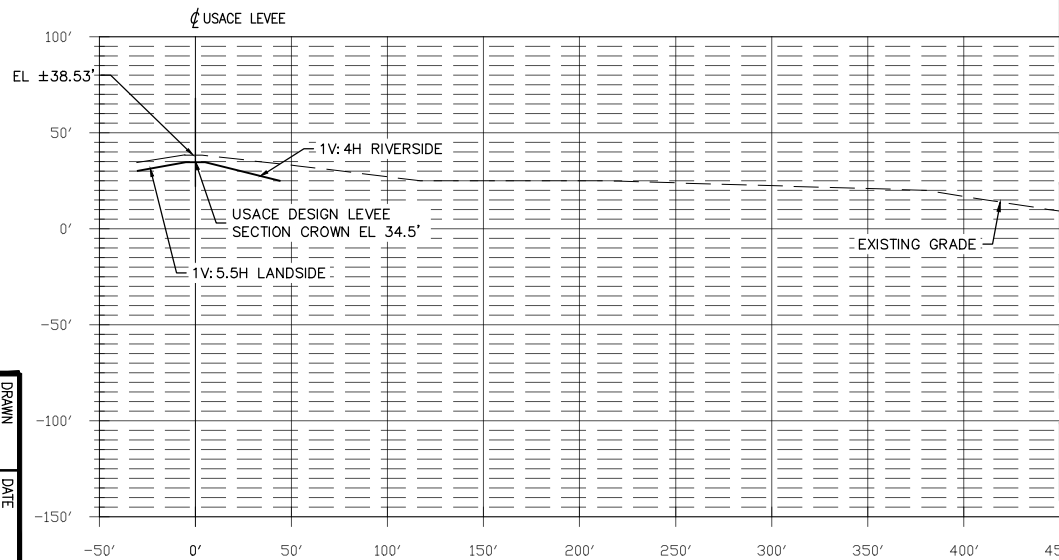
REV	DESCRIPTION	BY	DATE	CHK'D	APP'D
B	RE-ISSUED FOR PERMIT	AML	06/14/19	EAW	EAW
A	ISSUED FOR PERMIT	LTN	04/15/19	EAW	EAW

SCALE
AS NOTED

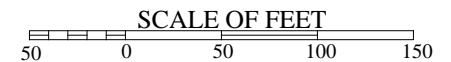
PROJ NO 540920075



NOTE:
EXISTING CONDITIONS GENERATED
USING USACE HYDROGRAPHIC
SURVEY DATA DATED 2013,
UNLESS NOTED OTHERWISE.



D SECTION- APPROX USACE STA 3504+09.87 1"=100'-0"



PRELIMINARY - FOR PERMITTING
PURPOSES ONLY.
WILLIAM R. GOHRES P.E. 0036311
06/17/2019

DRAWING NO

P0007

B

APPROVED	DATE	CHECKED	DATE	DRAWN	DATE
WRG	06/14/19	EAW	04/16/19	LTN	04/16/19

REV	DESCRIPTION	BY	DATE	CHK'D	APP'D
B	RE-ISSUED FOR PERMIT	AML	06/17/19	EAW	WRG
A	ISSUED FOR PERMIT	LTN	04/15/19	EAW	EAW

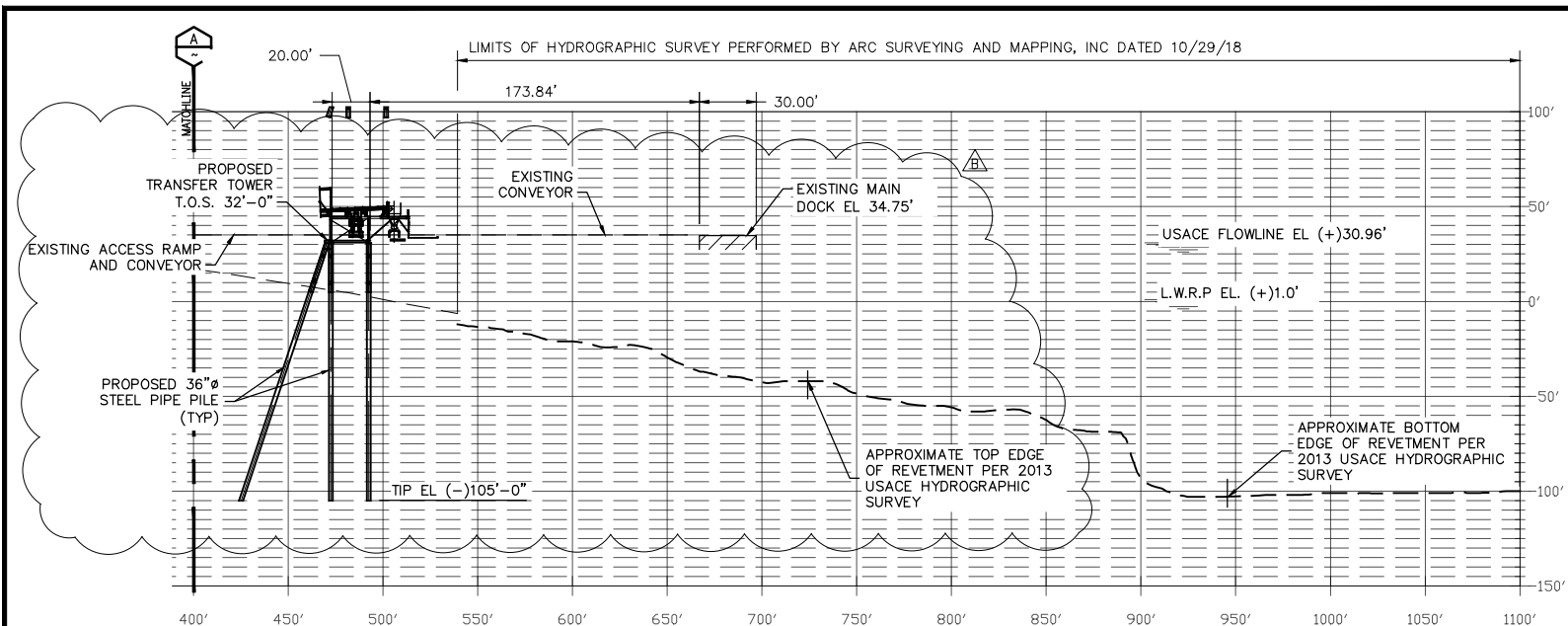
MOSAIC FERTILIZER, LLC
UNCLE SAM PLANT
PROPOSED FLOATING DOCK
SECTION
APPROX USACE STA 3504+09.87



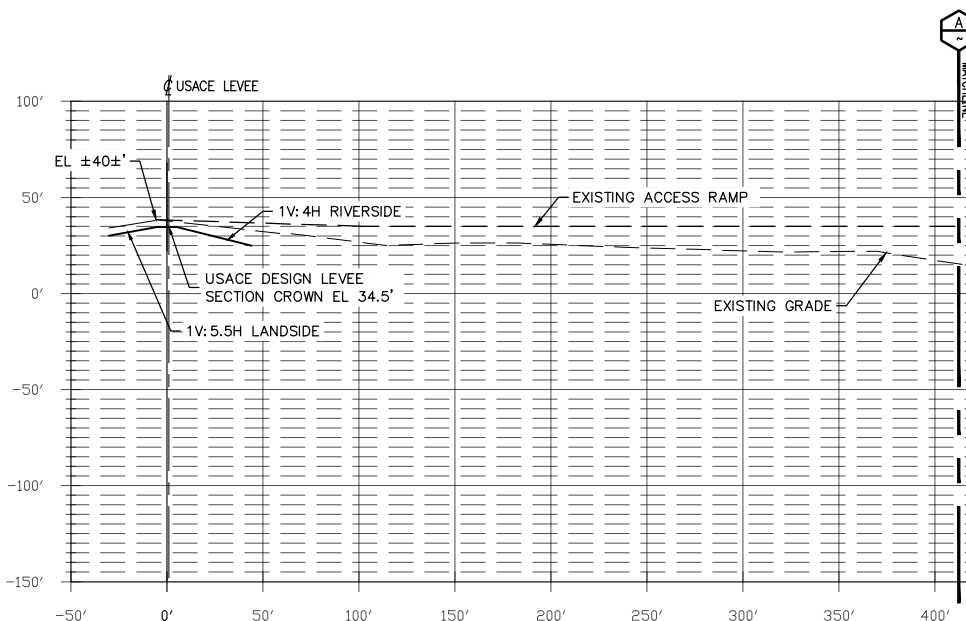
MATRIX PDM
ENGINEERING

CONFIDENTIALITY
STATEMENT

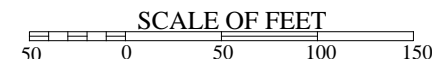
THIS DOCUMENT AND THE WORKS AND/OR
INFORMATION CONTAINED THEREIN ARE THE
CONFIDENTIAL AND PROPRIETARY PROPERTY OF
MATRIX PDM ENGINEERING, INC. AND SHALL
BE USED ONLY FOR THE INTENDED PURPOSE
AND PROJECT. IT MAY NOT BE COPIED IN
WHOLE OR IN PART, PARTS MAY NOT BE
FABRICATED FROM THE DOCUMENT, AND THE
INFORMATION THEREIN MAY NOT BE DISCLOSED
WITHOUT MATRIX PDM ENGINEERING, INC.'S
EXPRESS, WRITTEN PERMISSION.



NOTE:
EXISTING CONDITIONS GENERATED
USING USACE HYDROGRAPHIC
SURVEY DATA DATED 2013,
UNLESS NOTED OTHERWISE.



E SECTION-APPROX USACE STA 3505+95.35
SP0001



PRELIMINARY - FOR PERMITTING
PURPOSES ONLY.
WILLIAM R. GOHRES P.E. 0036311
06/17/2019

DRAWING NO

P0008

B

DRAWN	CHECKED	DATE
LTN	04/16/19	
APPROVED	DATE	
WRC	06/14/19	

SCALE						
	B	RE-ISSUED FOR PERMIT	AML	06/17/19	EAW	WRG
	A	ISSUED FOR PERMIT	LTN	04/15/19	EAW	EAW
	REV	DESCRIPTION	BY	DATE	CHK'D	APP'D

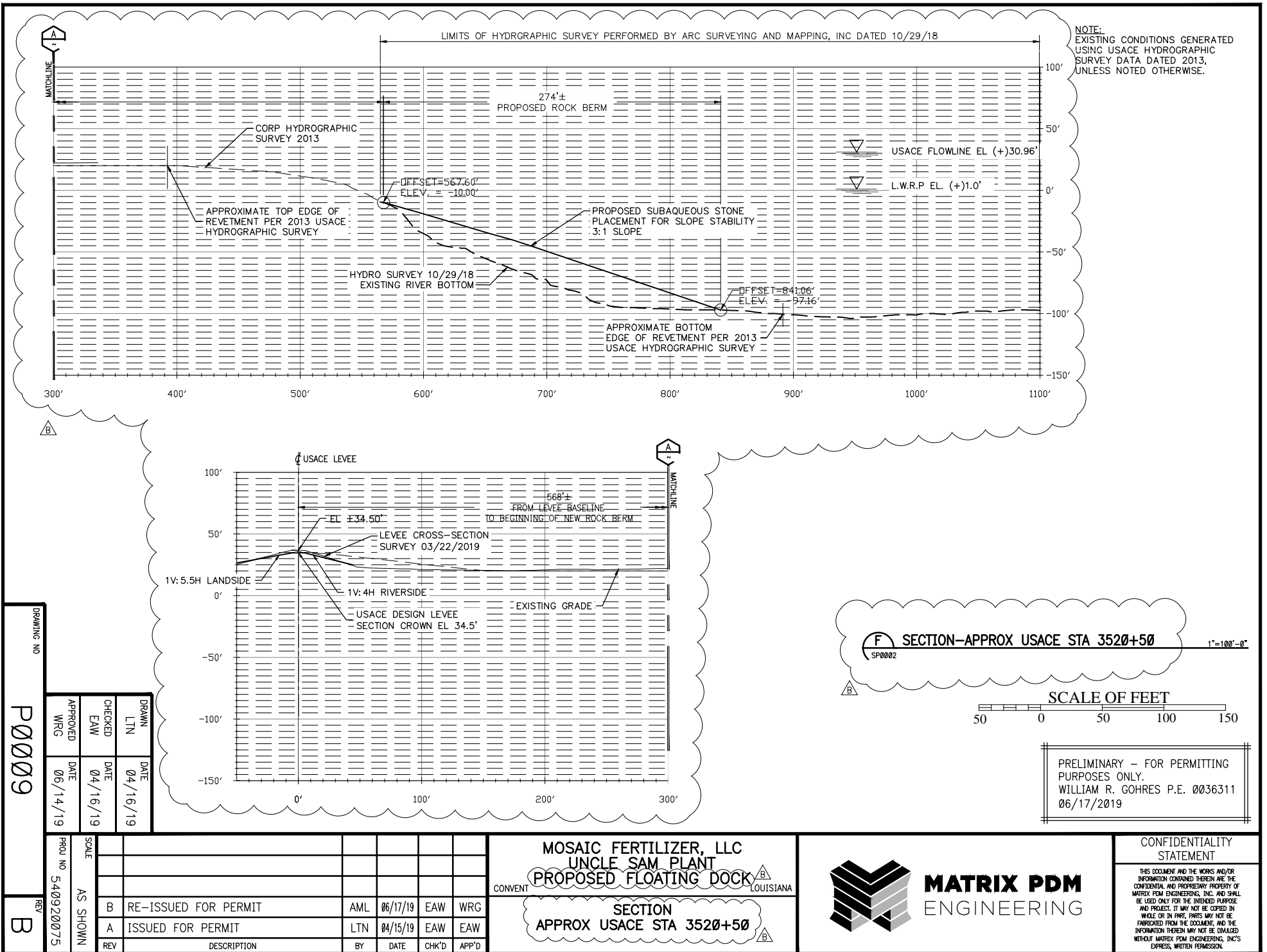
MOSAIC FERTILIZER, LLC
UNCLE SAM PLANT
PROPOSED FLOATING DOCK
SECTION
APPROX USACE STA 3505+95.35

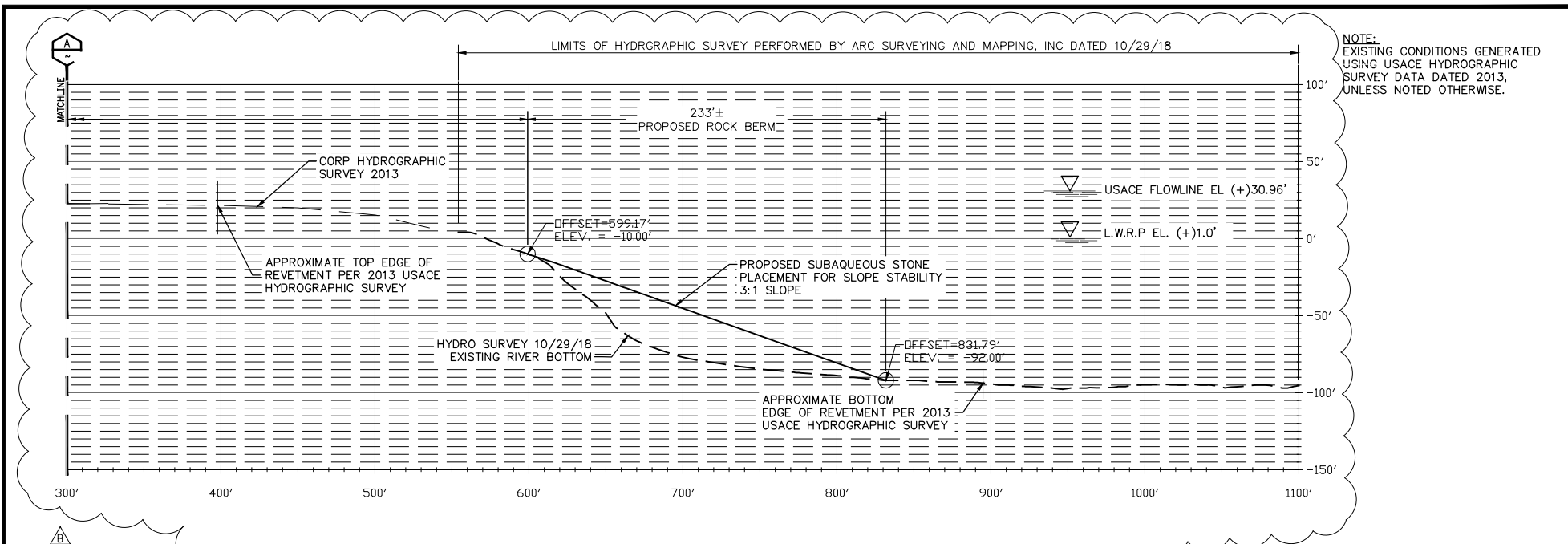


MATRIX PDM
ENGINEERING

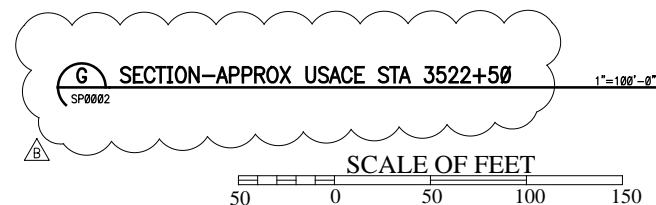
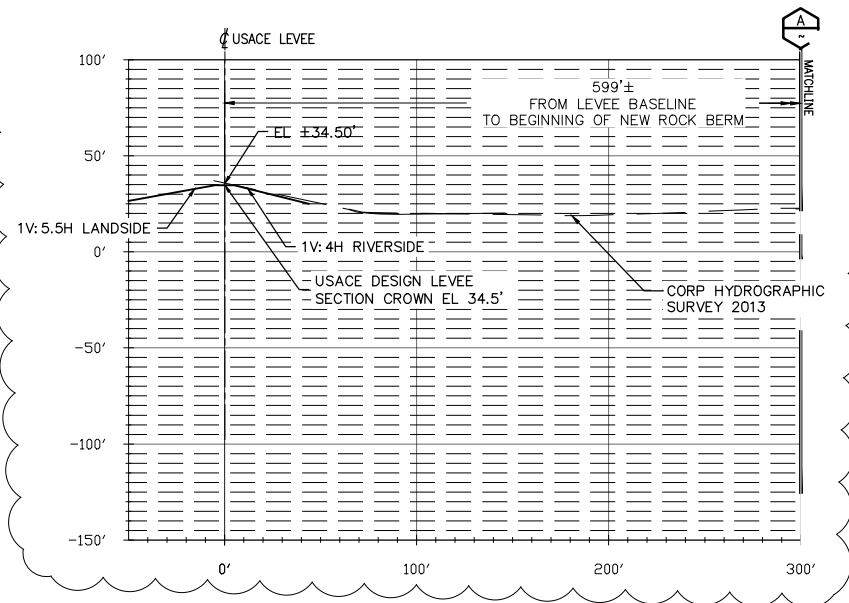
CONFIDENTIALITY STATEMENT

THIS DOCUMENT AND THE WORKS AND/OR
INFORMATION CONTAINED THEREIN ARE THE
CONFIDENTIAL AND PROPRIETARY PROPERTY OF
MATRIX PDM ENGINEERING, INC. AND SHALL
BE USED ONLY FOR THE INTENDED PURPOSE
AND PROJECT. IT MAY NOT BE COPIED IN
WHOLE OR IN PART, PARTS MAY NOT BE
FABRICATED FROM THE DOCUMENT, AND THE
INFORMATION THEREIN MAY NOT BE DISCLOSED
WITHOUT MATRIX PDM ENGINEERING, INC.'S
EXPRESS, WRITTEN PERMISSION.





NOTE:
EXISTING CONDITIONS GENERATED
USING USACE HYDROGRAPHIC
SURVEY DATA DATED 2013,
UNLESS NOTED OTHERWISE.



PRELIMINARY - FOR PERMITTING
PURPOSES ONLY.
WILLIAM R. GOHRES P.E. 0036311
06/17/2019

DRAWING NO
P0010
REV
B

DRAWN	CHECKED	DATE
LTN	EAW	04/16/19
APPROVED	DATE	
WRG	06/14/19	

SCALE							
	B	RE-ISSUED FOR PERMIT	AML	06/17/19	EAW	WRG	
	A	ISSUED FOR PERMIT	LTN	04/15/19	EAW	EAW	
PROJ NO	540920075						
AS SHOWN		REV	DESCRIPTION	BY	DATE	CHK'D	APP'D

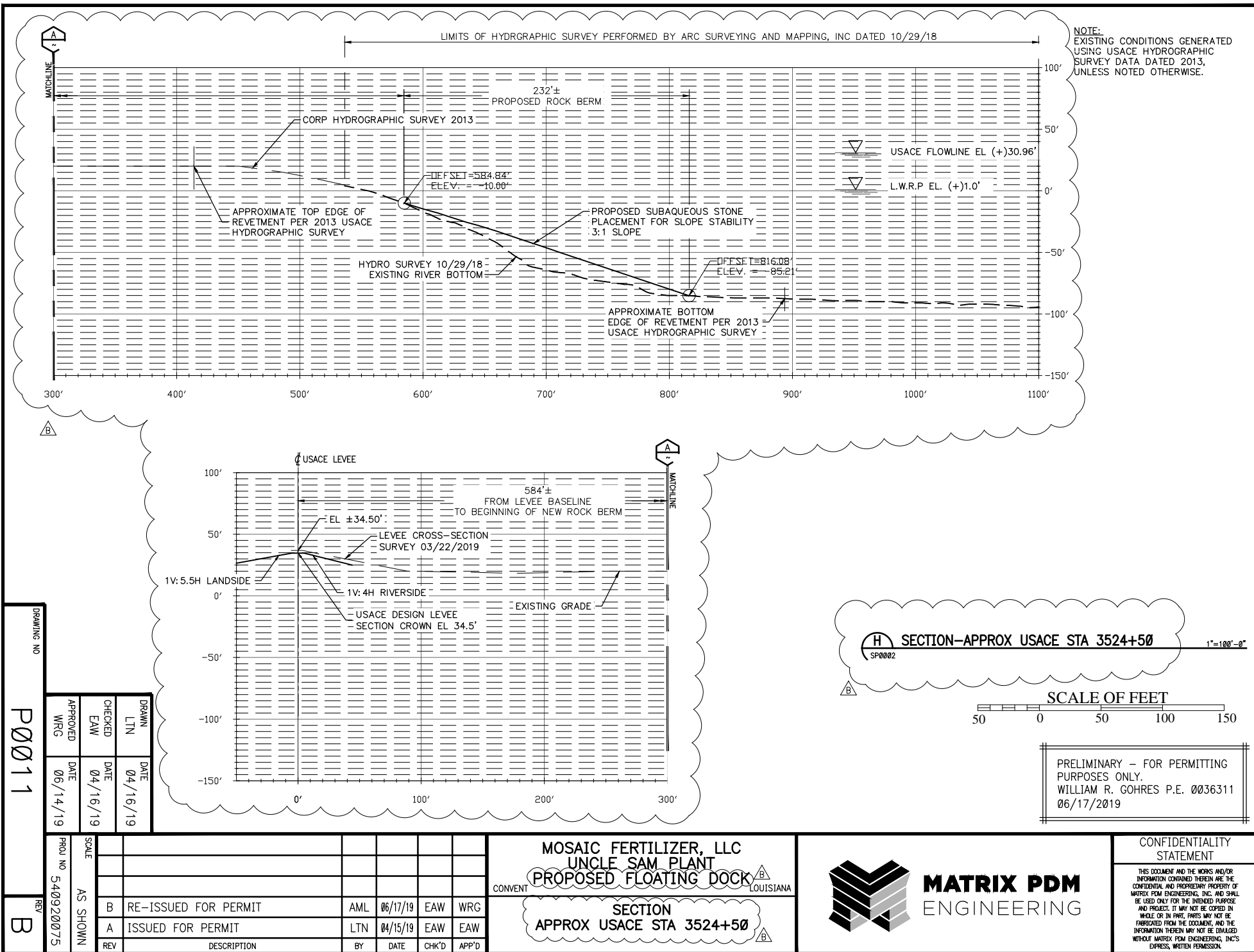
MOSAIC FERTILIZER, LLC
UNCLE SAM PLANT
PROPOSED FLOATING DOCK
LOUISIANA
SECTION
APPROX USACE STA 3522+50



MATRIX PDM
ENGINEERING

CONFIDENTIALITY STATEMENT

THIS DOCUMENT AND THE WORKS AND/OR
INFORMATION CONTAINED THEREIN ARE THE
CONFIDENTIAL AND PROPRIETARY PROPERTY OF
MATRIX PDM ENGINEERING, INC. AND SHALL
BE USED ONLY FOR THE INTENDED PURPOSE
AND PROJECT. IT MAY NOT BE COPIED IN
WHOLE OR IN PART, PARTS MAY NOT BE
FABRICATED FROM THE DOCUMENT, AND THE
INFORMATION THEREIN MAY NOT BE DISCLOSED
WITHOUT MATRIX PDM ENGINEERING, INC.'S
EXPRESS, WRITTEN PERMISSION.



NDSI NOTES

1. AS-BUILT DRAWINGS AND/OR PLATS SHALL HAVE WRITTEN ON THEM THE DATE OF COMPLETION OF SAID ACTIVITIES AND SHALL BE SUBMITTED TO THE LOUISIANA DEPARTMENT OF NATURAL RESOURCES, OFFICE OF COASTAL MANAGEMENT, P. O. BOX 44487, BATON ROUGE, LA 70804-4487 WITHIN 30 DAYS FOLLOWING PROJECT COMPLETION.
2. ALL STRUCTURES BUILT UNDER THE AUTHORIZATION AND CONDITIONS OF THIS PERMIT SHALL BE REMOVED FROM THE SITE WITHIN 120 DAYS OF ABANDONMENT OF THE FACILITIES FOR THE HEREIN PERMITTED USE, OR WHEN THESE STRUCTURES FALL INTO A STATE OF DISREPAIR SUCH THAT THEY CAN NO LONGER FUNCTION AS INTENDED. THIS CONDITION DOES NOT PRECLUDE THE NECESSITY FOR REVISING THE CURRENT PERMIT OR OBTAINING A SEPARATE COASTAL USE PERMIT, SHOULD ONE BE REQUIRED, FOR SUCH REMOVAL ACTIVITIES.
3. STRUCTURES MUST ALSO BE MARKED/LIGHTED IN ACCORDANCE WITH U. S. COAST GUARD REGULATIONS.
4. IN ORDER TO ENSURE THE SAFETY OF ALL PARTIES, THE PERMITTEE SHALL CONTACT THE LOUISIANA ONE CALL SYSTEM (1-800-272-3020) A MINIMUM OF 48 HOURS PRIOR TO THE COMMENCEMENT OF ANY EXCAVATION (DIGGING, DREDGING, JETTING, ETC.) OR DEMOLITION ACTIVITY.

PRELIMINARY – FOR PERMITTING
PURPOSES ONLY.
WILLIAM R. GOHRES P.E. 0036311
06/17/2019

DRAWN LTN	DATE 04/16/19
CHECKED EAW	DATE 04/16/19
APPROVED WRG	DATE 06/14/19

**CONFIDENTIALITY
STATEMENT**

THIS DOCUMENT AND THE WORKS AND/OR INFORMATION CONTAINED THEREIN ARE THE CONFIDENTIAL AND PROPRIETARY PROPERTY OF MATRIX FPM ENGINEERING, INC. AND SHALL BE USED ONLY FOR THE INTENDED PURPOSE AND PROJECT. IT MAY NOT BE COPIED IN WHOLE OR IN PART, PARTS MAY NOT BE FABRICATED FROM THE DOCUMENT, AND THE INFORMATION THEREIN MAY NOT BE DIVULGED WITHOUT MATRIX FPM ENGINEERING, INC.'S EXPRESS, WRITTEN PERMISSION.

MATRIX PDM
ENGINEERING



MOSAIC FERTILIZER, LLC
UNCLE SAM PLANT
PROPOSED FLOATING DOCK

NDSI NOTES

B	RE-ISSUED FOR PERMIT	AML	06/17/19	EAW	WRG
A	ISSUED FOR PERMIT	LTN	04/15/19	EAW	EAW
REV	DESCRIPTION	BY	DATE	CHK'D	APP'D

SCALE NTS

PROJ NO 540920075

DRAWING NO.

P0012

REV
B