

LEGEND	
	PROJECT BASELINE
	LIMITS OF CONSTRUCTION
	LEVEE
	LIMITS OF RIP RAP AND DREDGING
	NON-WETLANDS/OTHER WATERS
	WETLAND IMPACTS

*** TEMPORARY STRUCTURE REMOVAL**
 ALL EXISTING MATERIALS WHICH ARE A PART OF THE BAYOU CHENE EMERGENCY STRUCTURE (PERMIT NO. MVN-2011-2288-WJJ) SHALL BE REMOVED AS A PART OF THIS PERMIT. MATERIALS REMOVED FROM THE EXISTING STRUCTURE SHALL BE RE-USED ON OTHER PORTIONS OF WORK OUTLINED IN THE PERMIT DRAWINGS AND/OR HAULED OFFSITE TO A NON-WETLAND SITE.

6/17/2013 - P:\Y-2012\12\0525\DWG\PERMITTING\27-30 ENLARGED PLANS.DWG

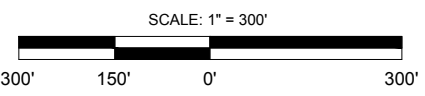
DRAWN BY:	KRG	APPROVED BY:	KLB
DATE:	05/31/2013	JOB NO:	2012.0525
DRAWING NAME:	27-30 ENLARGED PLANS.DWG		
SHEET NO:	27	OF	41
PROJECTION:	PROJECTION		
GEO. DATUM:	NAD83 VERT. DATUM: NAVD88		
GRID UNITS:	US SURVEY FEET		

BAYOU CHENE STRUCTURE

ST. MARY LEVEE DISTRICT

BAYOU CHENE FLOOD PROTECTION PROJECT

LOCATED IN SECTIONS 35, 36, 40, 41, 43, 45, & 47, T16S-R13E,
 & SECTIONS 1 & 12, T17S-R13E
 ST. MARY PARISH, LOUISIANA



T. BAKER SMITH 2013

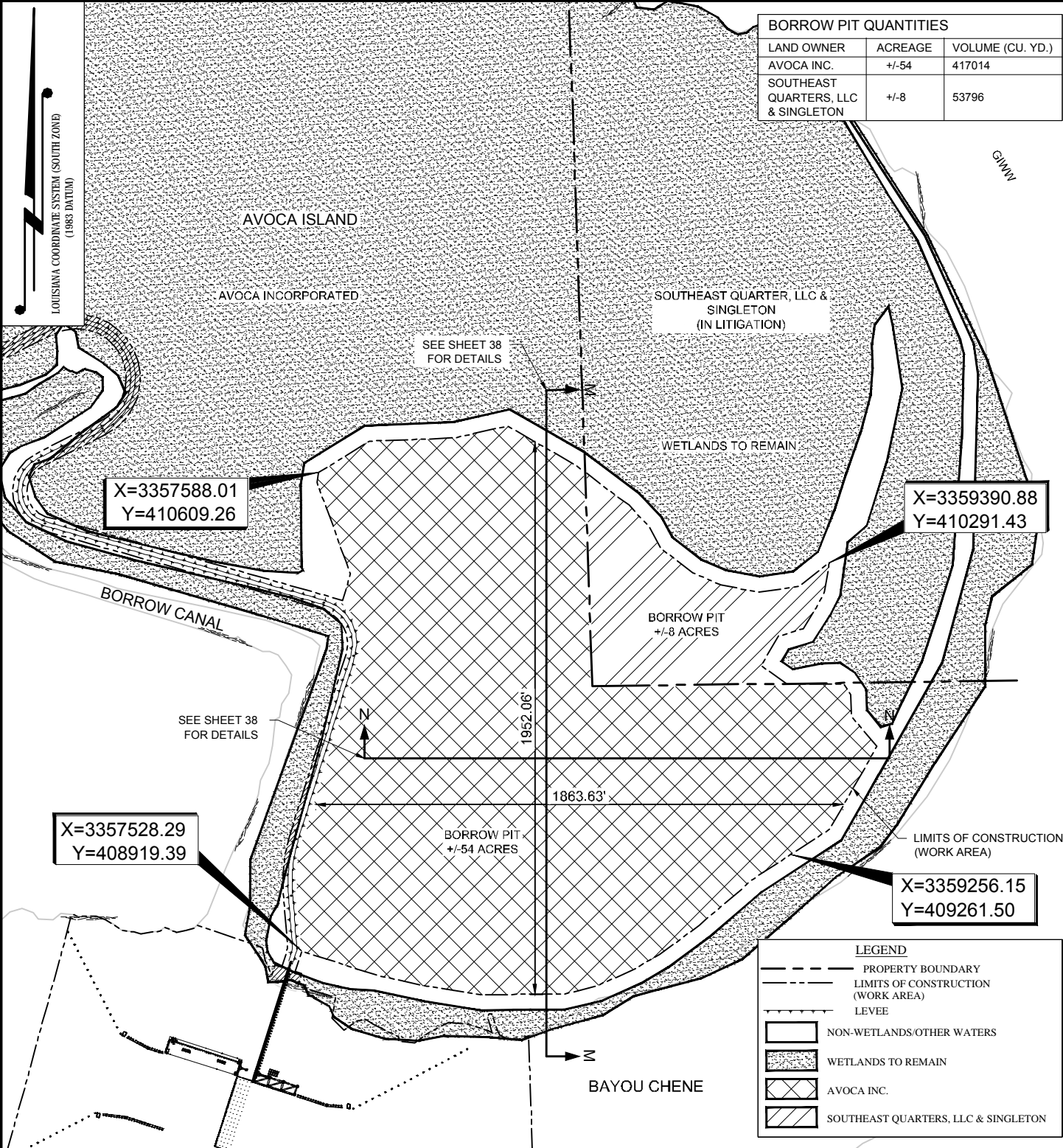
A CENTURY OF SOLUTIONS

17534 Old Jefferson Hwy, Suite D-1,
 Prairieville, LA 70780
 (225)744-2100 - tbsmith.com

2013

REV. NO:	00	REV. DATE:	---/---/---	REV. BY:	---
REVISION DESCRIPTION:					

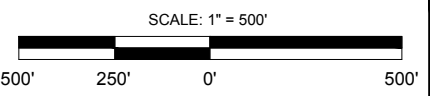
BORROW PIT QUANTITIES		
LAND OWNER	ACREAGE	VOLUME (CU. YD.)
AVOCA INC.	+/-54	417014
SOUTHEAST QUARTERS, LLC & SINGLETON	+/-8	53796



LEGEND	
	PROPERTY BOUNDARY
	LIMITS OF CONSTRUCTION (WORK AREA)
	LEVEE
	NON-WETLANDS/OTHER WATERS
	WETLANDS TO REMAIN
	AVOCA INC.
	SOUTHEAST QUARTERS, LLC & SINGLETON

DRAWN BY:	KRG	APPROVED BY:	KLB
DATE:	05/31/2013	JOB NO.:	2012.0525
DRAWING NAME:	28 BORROW PIT PLAN.DWG		
SHEET NO.:	28	OF	41
PROJECTION:	PROJECTION		
GEO. DATUM:	NAD83 VERT. DATUM: NAVD88		
GRID UNITS:	US SURVEY FEET		

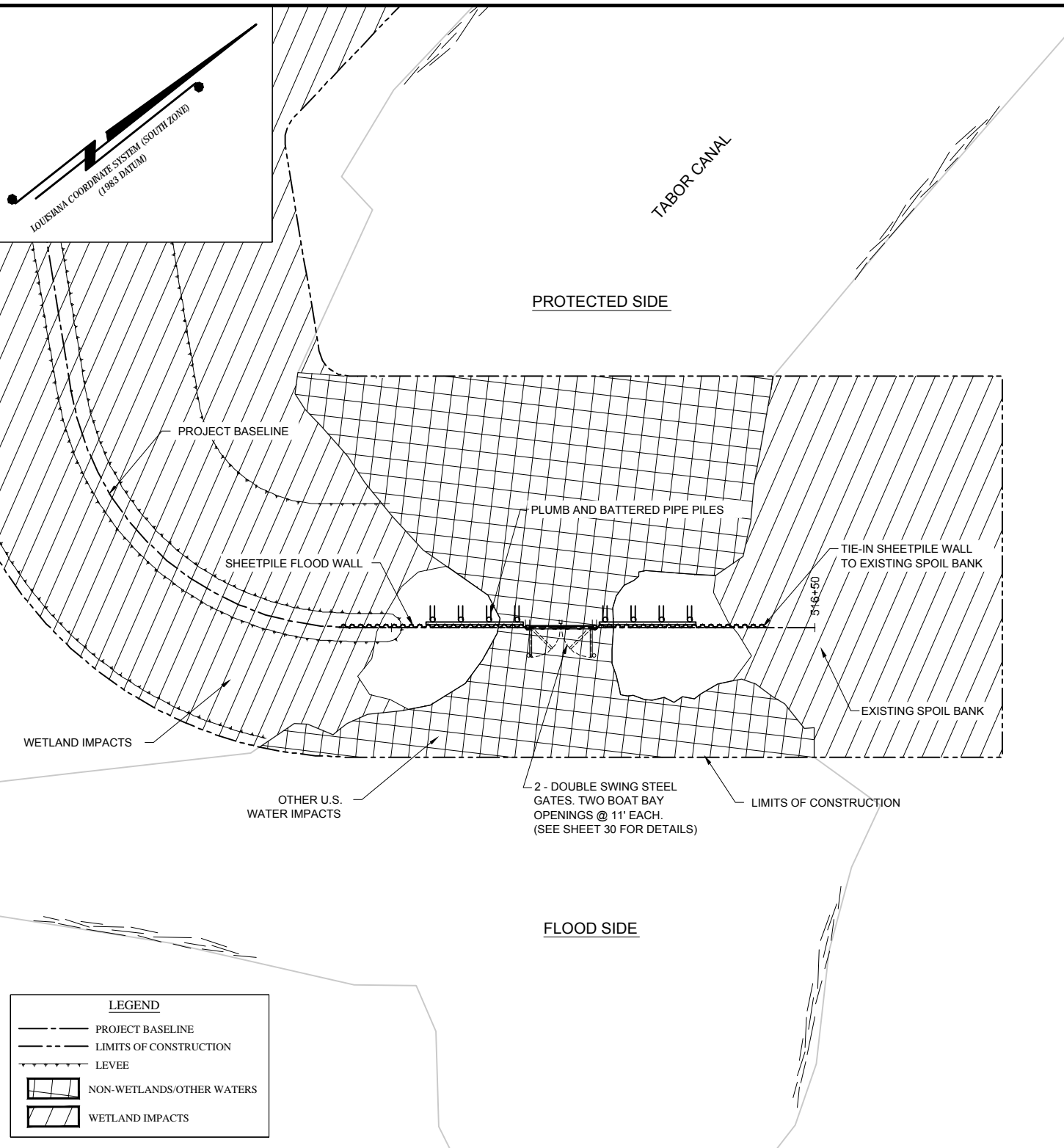
BORROW PIT
ST. MARY LEVEE DISTRICT
BAYOU CHENE FLOOD PROTECTION PROJECT
 LOCATED IN SECTIONS 35, 36, 40, 41, 43, 45, & 47, T16S-R13E,
 & SECTIONS 1 & 12, T17S-R13E
 ST. MARY PARISH, LOUISIANA



T. BAKER SMITH 1913
 A CENTURY OF SOLUTIONS
 17534 Old Jefferson Hwy, Suite D-1,
 Prairieville, LA 70780
 (225)744-2100 - tbsmith.com

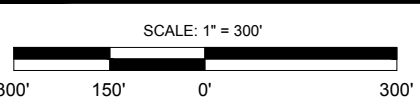
REV. NO.:	00	REV. DATE:	-/-/-	REV. BY:	--
REVISION DESCRIPTION:					
-					

6/17/2013 - P:\Y-2012\2012.0525\DWG\PERMITTING\28 BORROW PIT PLAN.DWG



LEGEND	
	PROJECT BASELINE
	LIMITS OF CONSTRUCTION
	LEVEE
	NON-WETLANDS/OTHER WATERS
	WETLAND IMPACTS

DRAWN BY: KRG	APPROVED BY: KLB
DATE: 05/31/2013	JOB NO: 2012.0525
DRAWING NAME: 27-30 ENLARGED PLANS.DWG	
SHEET NO: 29 OF 41	
PROJECTION: PROJECTION	
GEO. DATUM: NAD83 VERT. DATUM: NAVD88	
GRID UNITS: US SURVEY FEET	



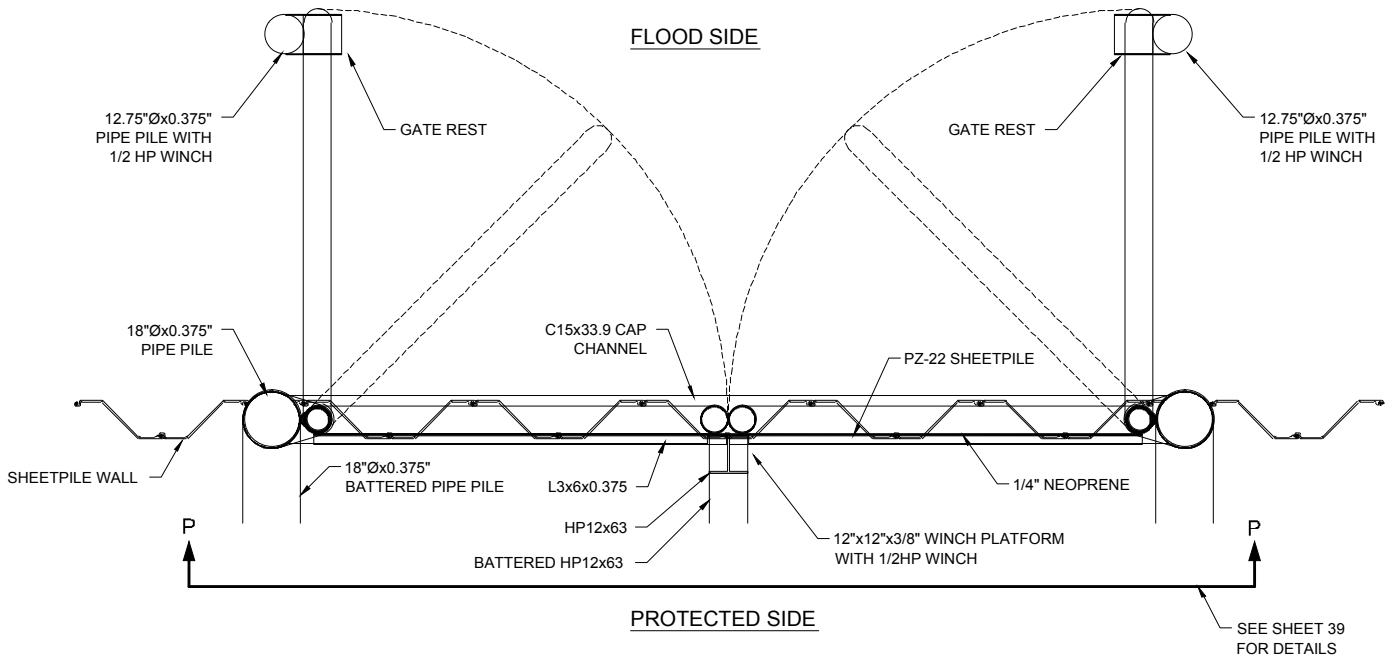
TAVOR CANAL WEIR STRUCTURE
ST. MARY LEVEE DISTRICT
 BAYOU CHENE FLOOD PROTECTION PROJECT
 LOCATED IN SECTIONS 35, 36, 40, 41, 43, 45, & 47, T16S-R13E,
 & SECTIONS 1 & 12, T17S-R13E
 ST. MARY PARISH, LOUISIANA

T. BAKER SMITH 1913
 A CENTURY OF SOLUTIONS
 17534 Old Jefferson Hwy, Suite D-1,
 Prairieville, LA 70780
 (225)744-2100 - tbsmith.com

REV. NO: 00	REV. DATE: --/--	REV. BY: --
REVISION DESCRIPTION: --		

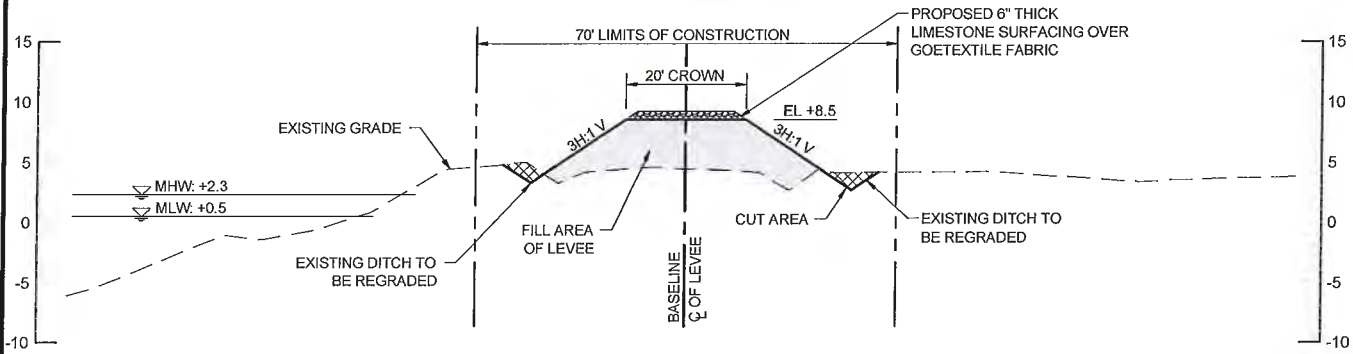
6/17/2013 - P:\Y-2012\2012.0525\DWG\PERMITTING\27-30 ENLARGED PLANS.DWG

6/17/2013 - P:\Y-2012\12\0525\DWG\PERMITTING\27-30 ENLARGED PLANS.DWG



STEEL GATE DETAILED PLAN VIEW
SCALE: 1" = 5'

DRAWN BY: KRG		APPROVED BY: KLB		TABOR CANAL STEEL GATE DETAIL	
DATE: 05/31/2013		JOB NO: 2012.0525		ST. MARY LEVEE DISTRICT BAYOU CHENE FLOOD PROTECTION PROJECT LOCATED IN SECTIONS 35, 36, 40, 41, 43, 45, & 47, T16S-R13E, & SECTIONS 1 & 12, T17S-R13E ST. MARY PARISH, LOUISIANA	
DRAWING NAME: 27-30 ENLARGED PLANS.DWG					
SHEET NO: 30 OF 41					
PROJECTION: PROJECTION GEO. DATUM: NAD83 VERT. DATUM: NAVD88 GRID UNITS: US SURVEY FEET					
SCALE: 1" = 5'					
		T. BAKER SMITH 1913 A CENTURY OF SOLUTIONS 17534 Old Jefferson Hwy, Suite D-1, Prairieville, LA 70769 (225)744-2100 - tbsmith.com		REV. NO: 00 REV. DATE: --/-- REV. BY: -- REVISION DESCRIPTION: --	



CROSS SECTION A-A - TYPICAL AVOCA ROAD LEVEE

STA. 0+00 - 336+34

HORIZONTAL SCALE: 1" = 30'
VERTICAL SCALE: 1" = 15'

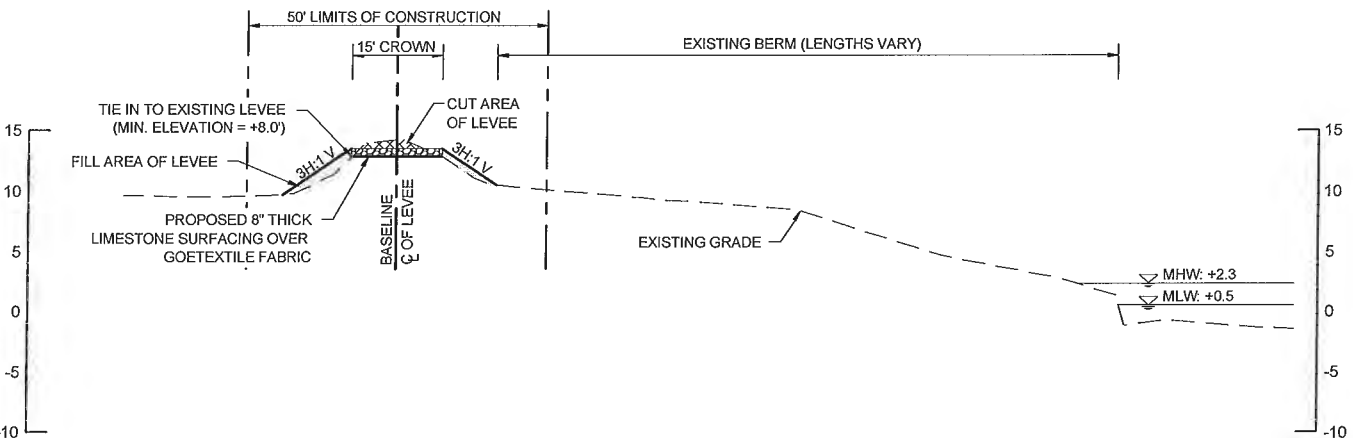
TOTAL VOLUME - SECTION A-A

FILL - LIMESTONE	13,391± (CY)
FILL - EARTHEN	183,635± (CY)
EXCAVATED	14,331± (CY)

TOTAL AREA - SECTION A-A

FILL	35.16± (AC)
EXCAVATED	12.86± (AC)

FILL MATERIAL WILL BE HAULED IN FROM BORROW PIT.
EXCAVATION WILL BE USED AS ON-SITE FILL.



CROSS SECTION B-B - TYPICAL AVOCA BORROW CANAL LEVEE

STA. 336+34 - 434+56

HORIZONTAL SCALE: 1" = 30'
VERTICAL SCALE: 1" = 15'

TOTAL VOLUME - SECTION B-B

FILL - LIMESTONE	3,700± (CY)
FILL - EARTHEN	3,700± (CY)
EXCAVATED	3,700± (CY)

TOTAL AREA - SECTION B-B

FILL	4.64± (AC)
EXCAVATED	3.38± (AC)

FILL MATERIAL WILL BE HAULED IN FROM BORROW PIT.
EXCAVATION WILL BE USED AS ON-SITE FILL.

6/17/2013 - P:\Y-2012\2012.0525\DWG\PERMITTING\31+39 TYPICAL CROSS SECTIONS.DWG

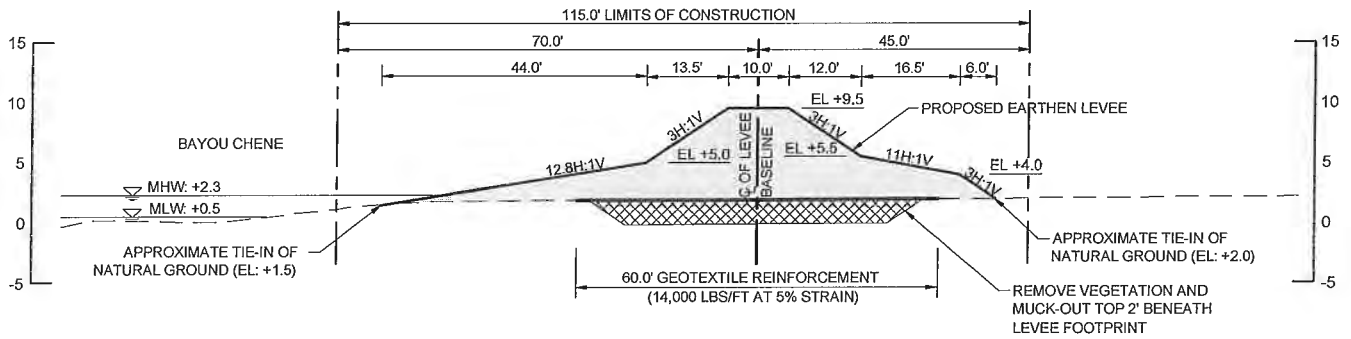
DRAWN BY: KRG	APPROVED BY: KLB
DATE: 05/31/2013	JOB NO: 2012.0525
DRAWING NAME: 39 TYPICAL CROSS SECTIONS.DWG	
SHEET NO: 31 OF 41	
PROJECTION: PROJECTION GEO. DATUM: NAD83 VERT. DATUM: NAVD88 GRID UNITS: US SURVEY FEET	
SCALE: 1" = 30'	

TYPICAL SECTIONS
ST. MARY LEVEE DISTRICT
BAYOU CHENE FLOOD PROTECTION PROJECT
LOCATED IN SECTIONS 35, 36, 40, 41, 43, 45, & 47, T16S-R13E,
& SECTIONS 1 & 12, T17S-R13E
ST. MARY PARISH, LOUISIANA



T. BAKER SMITH | 1913
A CENTURY OF SOLUTIONS
17534 Old Jefferson Hwy, Suite D-1,
Friscoville, LA 70709
(225)744-2100 - tbsmith.com

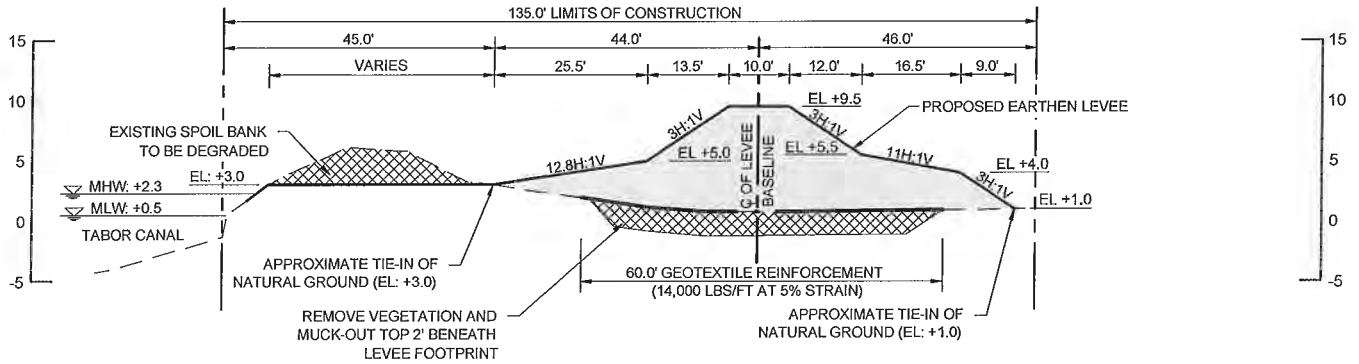
REV. NO: 00	REV. DATE: --/--	REV. BY: --
REVISION DESCRIPTION:		
--		



CROSS SECTION C-C - TYPICAL BAYOU CHENE EAST LEVEE
 STA. 445+93 - 455+59
 HORIZONTAL SCALE: 1" = 30'
 VERTICAL SCALE: 1" = 15'

TOTAL VOLUME - SECTION C-C	
FILL	15,020± (CY)
EXCAVATED	4,700± (CY)
TOTAL AREA - SECTION C-C	
FILL	2.26± (AC)
EXCAVATED	1.23± (AC)

FILL MATERIAL WILL BE BARGED IN FROM BORROW PIT.
 EXCAVATION WILL BE USED AS ON-SITE FILL.



CROSS SECTION D-D - TYPICAL TABOR CANAL LEVEE
 STA. 455+59 - 516+50
 HORIZONTAL SCALE: 1" = 30'
 VERTICAL SCALE: 1" = 15'

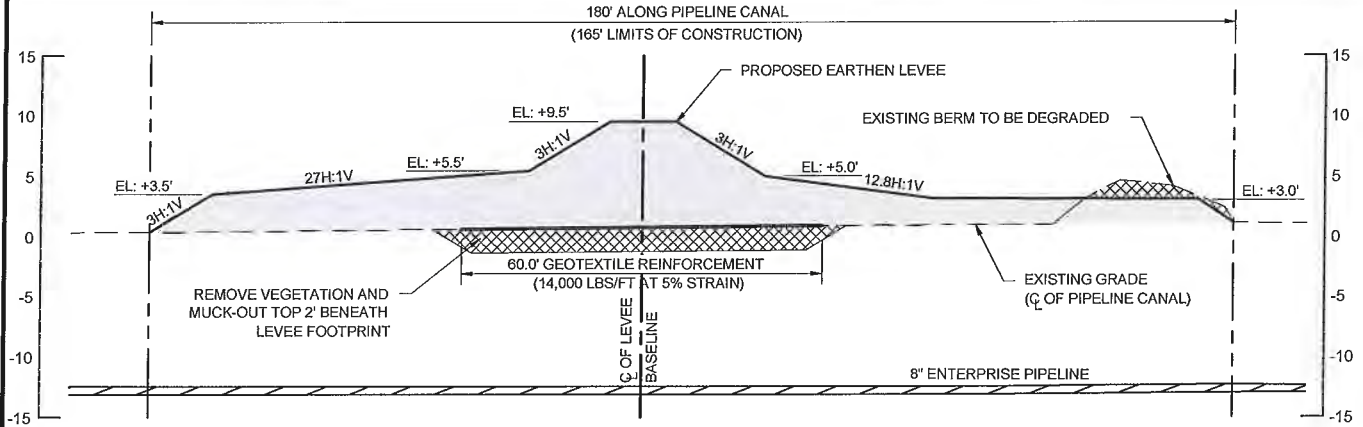
TOTAL VOLUME - SECTION D-D	
FILL	106,500± (CY)
EXCAVATED	28,500± (CY)
TOTAL AREA - SECTION D-D	
FILL	11.83± (AC)
EXCAVATED	13.30± (AC)

FILL MATERIAL WILL BE BARGED IN FROM BORROW PIT.
 EXCAVATION WILL BE USED AS ON-SITE FILL.

6/17/2013 - P:\Y-2012\2012.0525\DWG\PERMITTING\31+39 TYPICAL CROSS SECTIONS.DWG

DRAWN BY: KRG	APPROVED BY: KLB
DATE: 05/31/2013	JOB NO: 2012.0525
DRAWING NAME: 39 TYPICAL CROSS SECTIONS.DWG	
SHEET NO: 32 OF 41	
PROJECTION: PROJECTION GEO. DATUM: NAD83 VERT. DATUM: NAVD88 GRID UNITS: US SURVEY FEET	
SCALE: 1" = 30'	
30' 15' 0' 30'	

TABOR CANAL WEIR STRUCTURE		
ST. MARY LEVEE DISTRICT		
BAYOU CHENE FLOOD PROTECTION PROJECT		
LOCATED IN SECTIONS 35, 36, 40, 41, 43, 45, & 47, T16S-R13E, & SECTIONS 1 & 12, T17S-R13E ST. MARY PARISH, LOUISIANA		
	T. BAKER SMITH 1913 A CENTURY OF SOLUTIONS 17634 Old Jefferson Hwy, Suite D-1, Friscoville, LA 70759 (225)744-2100 - tbsmith.com	2013
REV. NO: 00	REV. DATE: --/--	REV. BY: ---
REVISION DESCRIPTION: --		



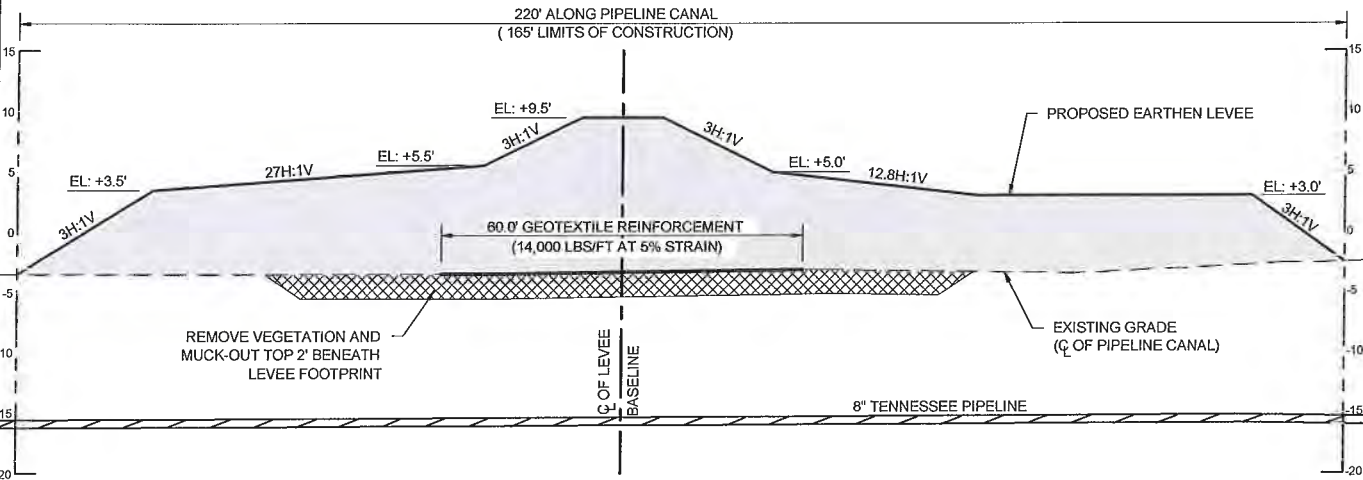
CROSS SECTION E-E - ENTERPRISE CROSSING LEVEE

HORIZONTAL SCALE: 1" = 30'
VERTICAL SCALE: 1" = 15'

TOTAL VOLUME - SECTION E-E	
FILL	2,700± (CY)
EXCAVATED	700± (CY)
TOTAL AREA - SECTION E-E	
FILL	0.15± (AC)
EXCAVATED	0.07± (AC)

FILL MATERIAL WILL BE BARGED IN FROM BORROW PIT. EXCAVATION WILL BE USED AS ON-SITE FILL.

NOTE: LEVEE SECTION SHOWN IS SKEWED TO REPRESENT THE PROPOSED LEVEE ALONG PIPELINE CANAL.



CROSS SECTION F-F - TENNESSEE CROSSING LEVEE

HORIZONTAL SCALE: 1" = 30'
VERTICAL SCALE: 1" = 15'

TOTAL VOLUME - SECTION F-F	
FILL	4,000± (CY)
EXCAVATED	1,000± (CY)
TOTAL AREA - SECTION F-F	
FILL	0.49± (AC)
EXCAVATED	0.26± (AC)

FILL MATERIAL WILL BE BARGED IN FROM BORROW PIT. EXCAVATION WILL BE USED AS ON-SITE FILL.

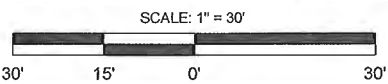
NOTE: LEVEE SECTION SHOWN IS SKEWED TO REPRESENT THE PROPOSED LEVEE ALONG PIPELINE CANAL.

6/17/2013 - P:\Y-2012\2012.0525\DWG\PERMITTING\31-39 TYPICAL CROSS SECTIONS.DWG

DRAWN BY:	KRG	APPROVED BY:	KLB
DATE:	05/31/2013	JOB NO:	2012.0525
DRAWING NAME: 39 TYPICAL CROSS SECTIONS.DWG			
SHEET NO:	33	OF	41
PROJECTION: PROJECTION GEO. DATUM: NAD83 VERT. DATUM: NAVD88 GRID UNITS: US SURVEY FEET			

TABOR CANAL WEIR STRUCTURE

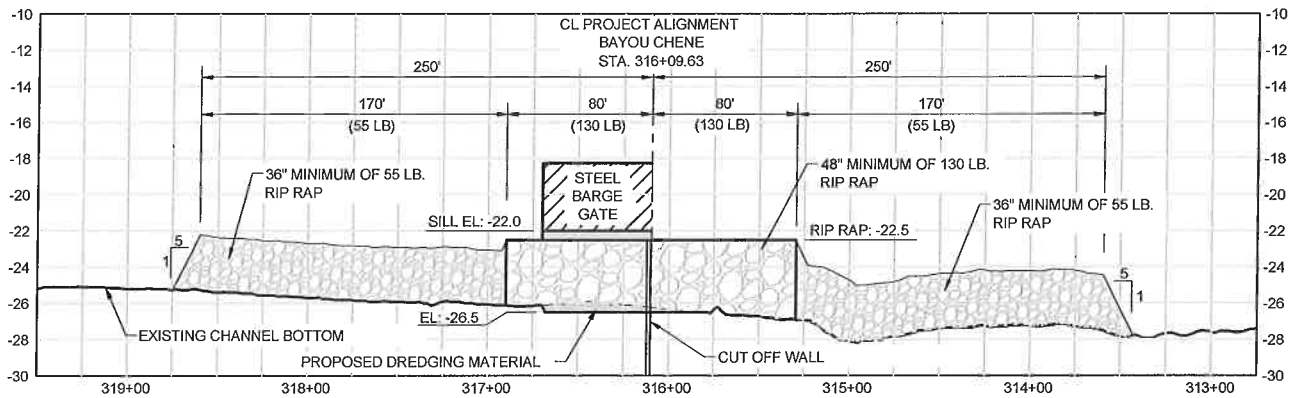
ST. MARY LEVEE DISTRICT
BAYOU CHENE FLOOD PROTECTION PROJECT
LOCATED IN SECTIONS 35, 36, 40, 41, 43, 45, & 47, T16S-R13E,
& SECTIONS 1 & 12, T17S-R13E
ST. MARY PARISH, LOUISIANA



T. BAKER SMITH 1913
A CENTURY OF SOLUTIONS
17634 Old Jefferson Hwy, Suite D-1,
Frisville, LA 70708
(225) 744-2100 • tbs@tbs.com

REV. NO:	00	REV. DATE:	--/--	REV. BY:	---
----------	----	------------	-------	----------	-----

REVISION DESCRIPTION:
--



- NOTE:
- BARGE GATE SHOWN IN CLOSED POSITION
 - VOLUME AND AREA QUANTITIES ARE SHOWN ON SHEET 36.

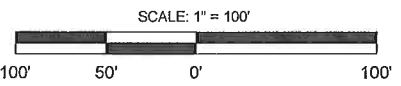
CROSS SECTION G-G - BAYOU CHENE CENTERLINE SOUTH

HORIZONTAL SCALE: 1" = 100'
 VERTICAL SCALE: 1" = 50'

TABOR CANAL WEIR STRUCTURE

ST. MARY LEVEE DISTRICT
BAYOU CHENE FLOOD PROTECTION PROJECT
 LOCATED IN SECTIONS 35, 36, 40, 41, 43, 45, & 47, T16S-R13E,
 & SECTIONS 1 & 12, T17S-R13E
 ST. MARY PARISH, LOUISIANA

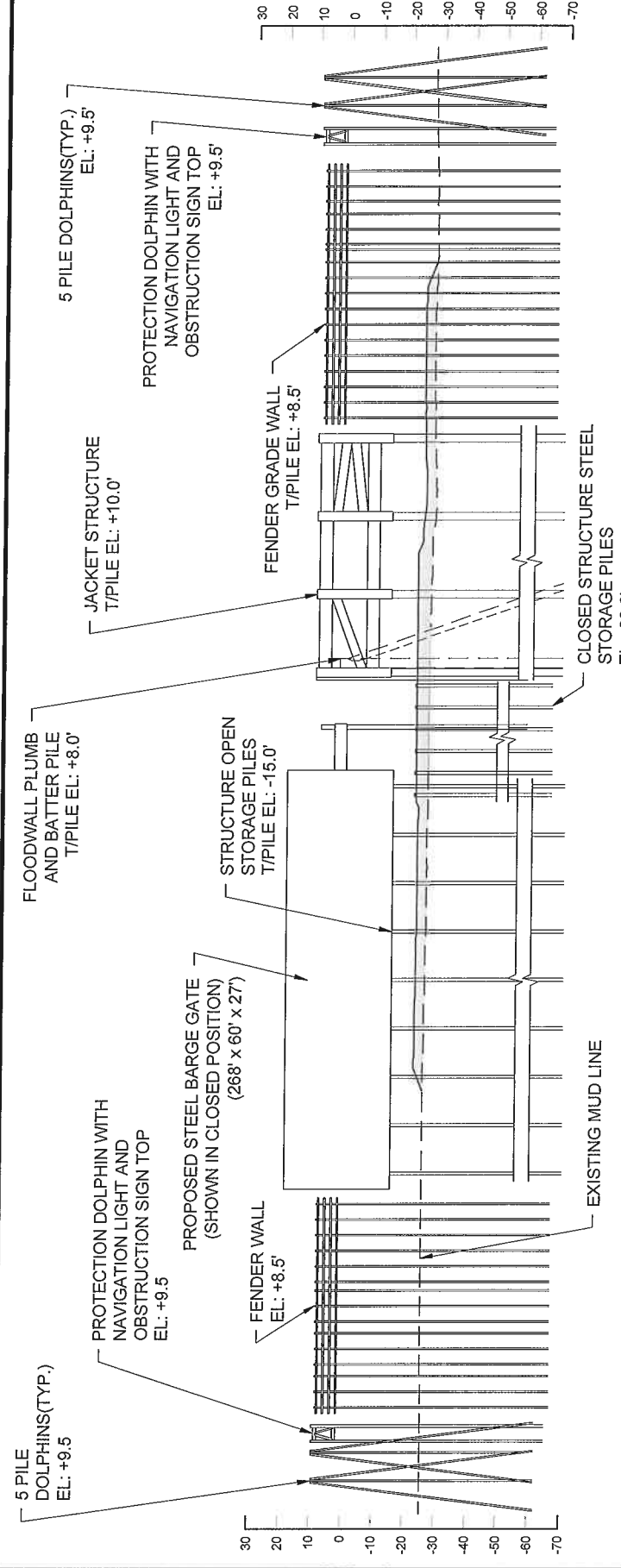
DRAWN BY:	KRG	APPROVED BY:	KLB
DATE:	05/31/2013	JOB NO.:	2012.0525
DRAWING NAME: 39 TYPICAL CROSS SECTIONS.DWG			
SHEET NO.:	34	OF	41
PROJECTION: PROJECTION GEO. DATUM: NAD83 VERT. DATUM: NAVD88 GRID UNITS: US SURVEY FEET			



T. BAKER SMITH | 1913
 A CENTURY OF SOLUTIONS | 2013
 17634 Old Jefferson Hwy, Suite D-1,
 Prairieville, LA 70759
 (225)744-2100 - tbsmith.com

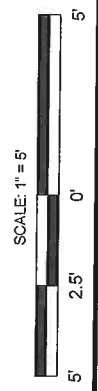
REV. NO:	00	REV. DATE:	--/--	REV. BY:	---
REVISION DESCRIPTION: --					

6/17/2013 - P:\Y-2012\2012.0525\DWG\PERMITTING\31-39 TYPICAL CROSS SECTIONS.DWG

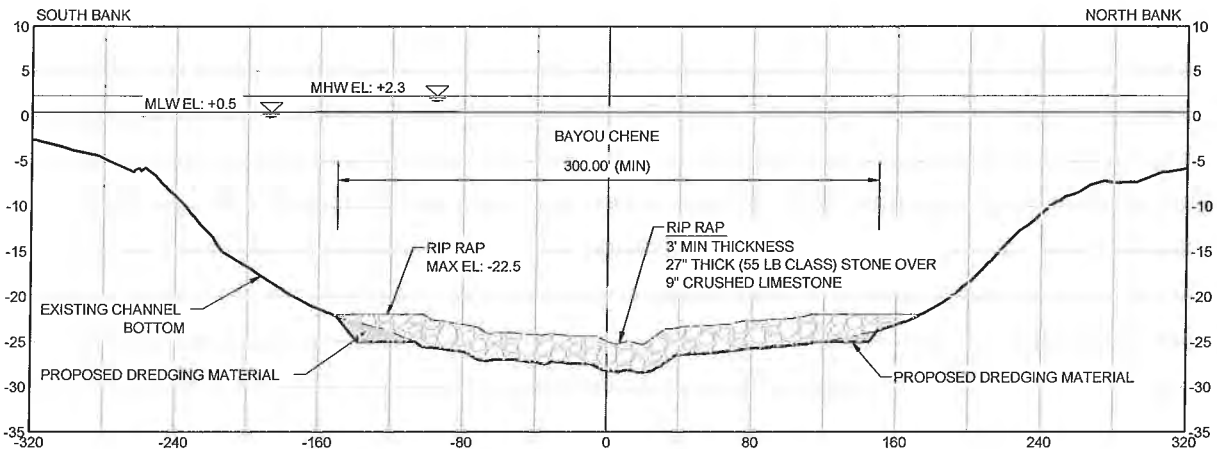


CROSS SECTION H-H - BAYOU CHENE CENTERLINE NORTH
 HORIZONTAL SCALE: 1" = 100'
 VERTICAL SCALE: 1" = 50'

TYPICAL SECTIONS	
ST. MARY LEVEE DISTRICT	
BAYOU CHENE FLOOD PROTECTION PROJECT LOCATED IN SECTIONS 35, 36, 40, 41, 43, 45, & 47, T16S-R13E, & SECTIONS 1 & 12, T17S-R13E ST. MARY PARISH, LOUISIANA	
DRAWN BY: KRG	APPROVED BY: KLB
DATE: 05/31/2013	JOB NO: 2012.0525
DRAWING NAME: 89 TYPICAL CROSS SECTIONS.DWG	
SHEET NO: 35	OF 41
PROJECTION: PROJECTION	
GEO DATUM: NAD83	
VERT DATUM: NAVD88	
GRID UNITS: US SURVEY FEET	
REVISION DESCRIPTION:	
REV. NO: 00	REV. DATE: --/--
REV. BY: --	

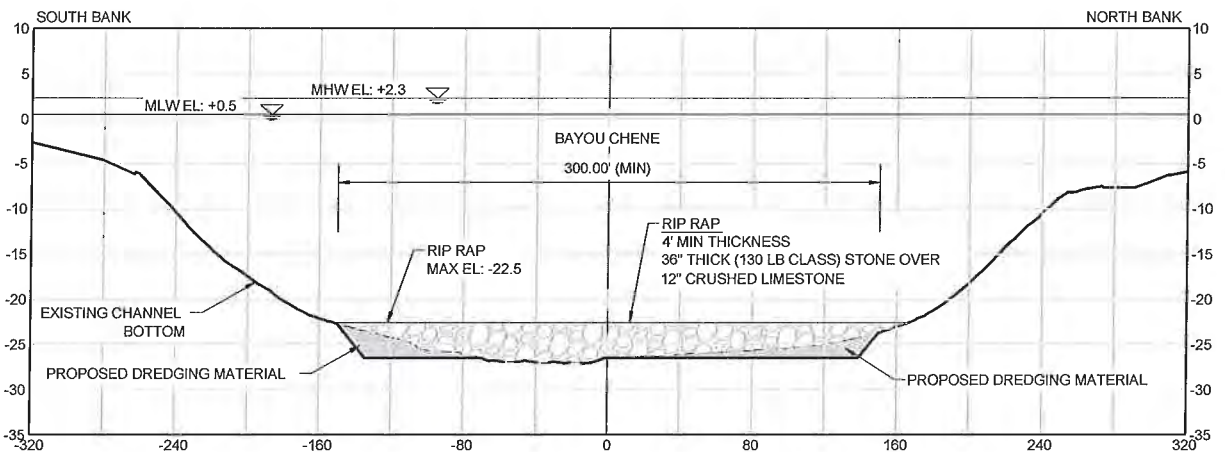


T. BAKER SMITH 1913
 A CENTURY OF SOLUTIONS
 2013
 17534 Old Jefferson Hwy, Suite D-1,
 Prairieville, LA 70769
 (225)744-2100 - tbsmith.com



CROSS SECTION J-J - BAYOU CHENE STA. 314+50

HORIZONTAL SCALE: 1" = 100'
VERTICAL SCALE: 1" = 50'



CROSS SECTION K-K - BAYOU CHENE STA. 315+80

HORIZONTAL SCALE: 1" = 100'
VERTICAL SCALE: 1" = 50'

TOTAL VOLUME OF RIP RAP FOR BAYOU CHENE	
FILL	18,444± (CY)
TOTAL VOLUME OF DREDGING FOR BAYOU CHENE	
EXCAVATION	2,300± (CY)
TOTAL AREA FOR BAYOU CHENE	
FILL	3.45± (AC)

DRAWN BY: KRG APPROVED BY: KLB

DATE: 05/031/2013 JOB NO: 2012.0525

DRAWING NAME: 39 TYPICAL CROSS SECTIONS.DWG

SHEET NO: 36 OF 41

PROJECTION: PROJECTION
GEO. DATUM: NAD83 | VERT. DATUM: NAVD88
GRID UNITS: US SURVEY FEET

SCALE: 1" = 100'



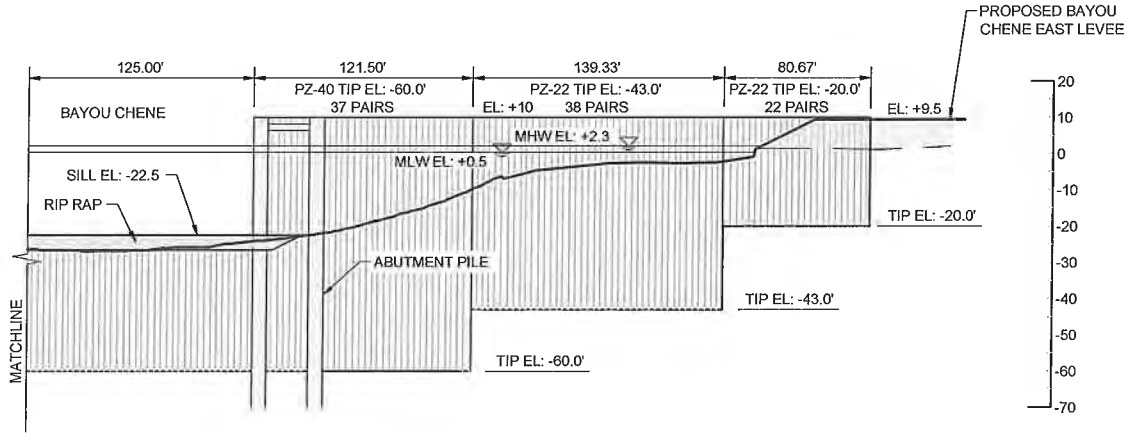
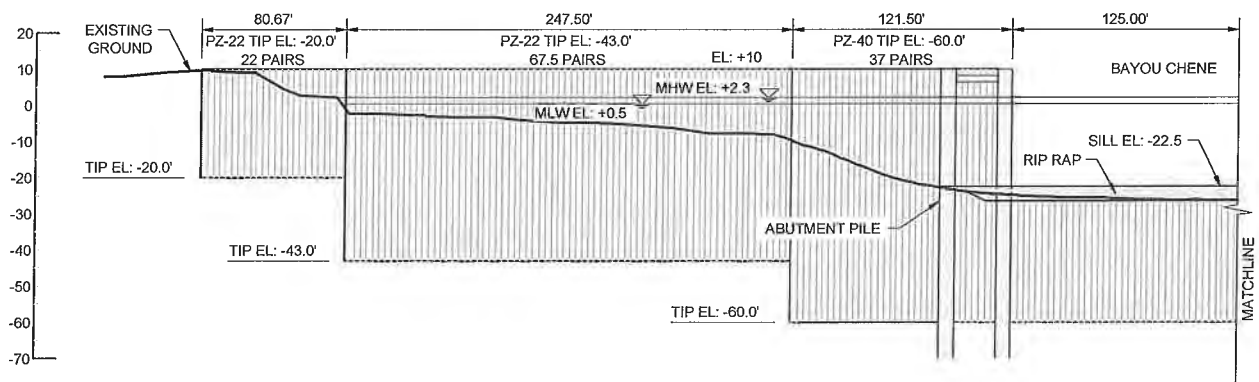
T. BAKER SMITH 1913
A CENTURY OF SOLUTIONS
17634 Old Jefferson Hwy, Suite D-1,
Prairieville, LA 70793
(225)744-2100 - tbsmith.com

REV. NO: 00 REV. DATE: --/-- REV. BY: --

REVISION DESCRIPTION:

TABOR CANAL WEIR STRUCTURE

ST. MARY LEVEE DISTRICT
BAYOU CHENE FLOOD PROTECTION PROJECT
LOCATED IN SECTIONS 35, 36, 40, 41, 43, 45, & 47, T16S-R13E,
& SECTIONS 1 & 12, T17S-R13E
ST. MARY PARISH, LOUISIANA

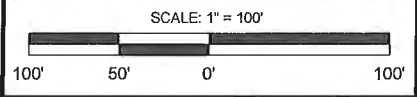


CROSS SECTION L-L - BRACED FLOOD WALL
 HORIZONTAL SCALE: 1" = 100'
 VERTICAL SCALE: 1" = 50'

6/17/2013 - P:\Y-2012\2012.0525\DWG\PERMITTING\31-39 TYPICAL CROSS SECTIONS.DWG

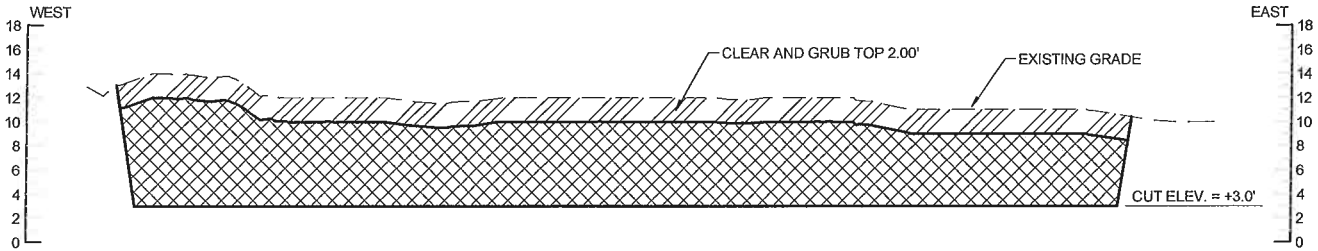
DRAWN BY:	KRG	APPROVED BY:	KLB
DATE:	05/31/2013	JOB NO.:	2012.0525
DRAWING NAME: 39 TYPICAL CROSS SECTIONS.DWG			
SHEET NO.:	37	OF	41
PROJECTION: PROJECTION GEO. DATUM: NAD83 VERT. DATUM: NAVD88 GRID UNITS: US SURVEY FEET			

TABOR CANAL WEIR STRUCTURE
ST. MARY LEVEE DISTRICT
BAYOU CHENE FLOOD PROTECTION PROJECT
 LOCATED IN SECTIONS 35, 36, 40, 41, 43, 45, & 47, T16S-R13E,
 & SECTIONS 1 & 12, T17S-R13E
 ST. MARY PARISH, LOUISIANA



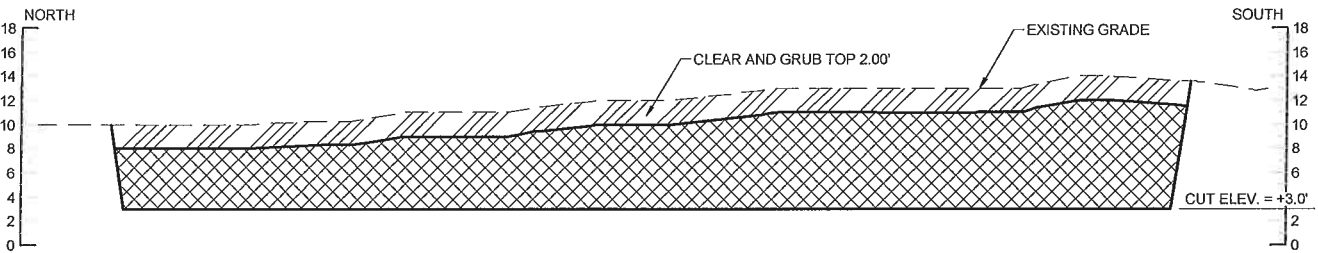
T. BAKER SMITH 1913
 A CENTURY OF SOLUTIONS
 17634 Old Jefferson Hwy, Suite D-1,
 Prairieville, LA 70759
 (225) 44-2100 - tbsmith.com

REV. NO.:	00	REV. DATE:	--/--	REV. BY:	--
REVISION DESCRIPTION:					



CROSS SECTION M-M - BORROW PIT

HORIZONTAL SCALE: 1" = 300'
VERTICAL SCALE: 1" = 15'



CROSS SECTION N-N - BORROW PIT

HORIZONTAL SCALE: 1" = 300'
VERTICAL SCALE: 1" = 15'

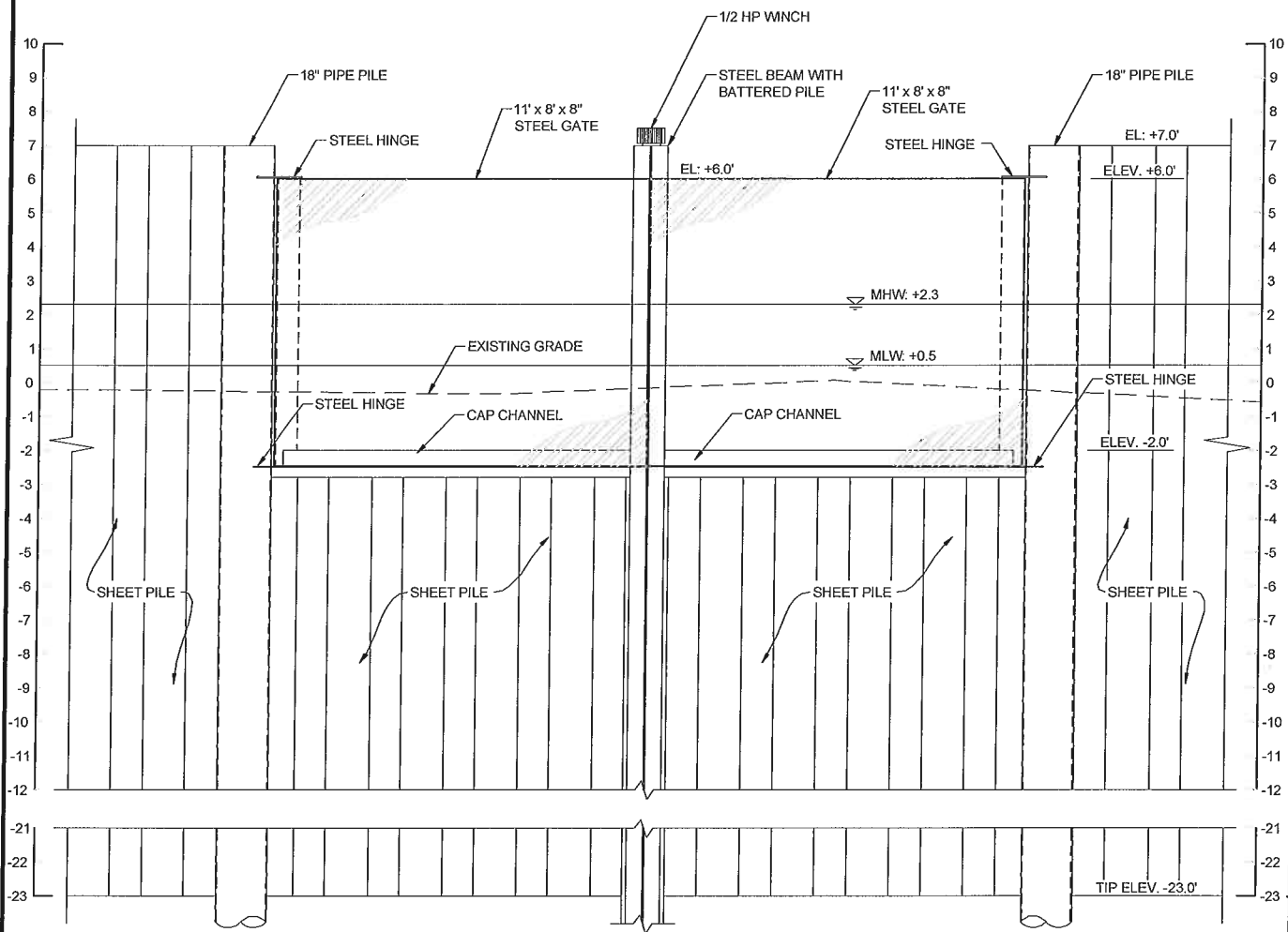
TOTAL VOLUME	
EXCAVATION	463,377± (CY)
FILL	200,053± (CY)
TOTAL AREA	
EXCAVATION	62± (AC)
FILL	62± (AC)

NOTE: THE PROPOSED BORROW PIT SITE WILL HAVE THE TOP TWO FEET OF MATERIAL STRIPPED IN ORDER TO REMOVE ANY MATERIAL UNSUITABLE FOR LEVEE CONSTRUCTION. THE MATERIAL STRIPPED WILL REMAIN WITHIN THE LIMITS OF THE BORROW AREA AND WILL BE RESPREAD FOLLOWING COMPLETION OF THE LEVEE CONSTRUCTION. THE AREA AND ESTIMATED VOLUME SHOWN ARE LARGER THAN WHAT MAY BE REQUIRED FOR THE LEVEE IMPROVEMENTS, HOWEVER THE LARGER AREA WAS SHOWN TO PROVIDE A CONTINGENCY FOR ANY MATERIAL DETERMINED TO BE UNSUITABLE FOR LEVEE CONSTRUCTION. ONLY THE REQUIRED VOLUME NEEDED FOR LEVEE IMPROVEMENTS WILL BE REMOVED FROM THE BORROW PIT.

463,377 CY	TOTAL EXCAVATION
200,053 CY	2 FT LAYER OF STRIPPED MATERIAL
263,324 CY	MATERIAL REMOVED FROM BORROW PIT AND PLACED AS FILL FOR LEVEE CONSTRUCTION

6/17/2013 - P:\Y-2012\2012.0525\DWG\PERMITTING\31-39 TYPICAL CROSS SECTIONS.DWG

DRAWN BY: KRG	APPROVED BY: KLB	TABOR CANAL WEIR STRUCTURE	
DATE: 05/31/2013	JOB NO: 2012.0525	ST. MARY LEVEE DISTRICT	
DRAWING NAME: 39 TYPICAL CROSS SECTIONS.DWG		BAYOU CHENE FLOOD PROTECTION PROJECT	
SHEET NO: 38 OF 41		LOCATED IN SECTIONS 35, 36, 40, 41, 43, 45, & 47, T16S-R13E, & SECTIONS 1 & 12, T17S-R13E	
PROJECTION: PROJECTION GEO. DATUM: NAD83 VERT. DATUM: NAVD88 GRID UNITS: US SURVEY FEET		ST. MARY PARISH, LOUISIANA	
SCALE: 1" = 30'		REV. NO: 00	REV. DATE: --/--
		REV. BY: ---	
		T. BAKER SMITH 1913 <small>A CENTURY OF SOLUTIONS</small> <small>17634 Old Jefferson Hwy, Suite D-1, Prairieville, LA 70789</small> <small>(225)744-2100 - tbsmith.com</small>	
		REVISION DESCRIPTION: ---	



CROSS SECTION P-P - TABOR CANAL WEIR STRUCTURE
 HORIZONTAL SCALE: 1" = 5'
 VERTICAL SCALE: 1" = 5'

6/17/2013 - P:\Y-2012\2012.0525\DWG\PERMITTING\31-39 TYPICAL CROSS SECTIONS.DWG

DRAWN BY:	KRG	APPROVED BY:	KLB
DATE:	05/31/2013	JOB NO:	2012.0525
DRAWING NAME: 39 TYPICAL CROSS SECTIONS.DWG			
SHEET NO:	39	OF	41
PROJECTION: PROJECTION GEO. DATUM: NAD83 VERT. DATUM: NAVD88 GRID UNITS: US SURVEY FEET			
SCALE: 1" = 5'			

TABOR CANAL WEIR STRUCTURE ST. MARY LEVEE DISTRICT BAYOU CHENE FLOOD PROTECTION PROJECT LOCATED IN SECTIONS 35, 36, 40, 41, 43, 45, & 47, T16S-R13E, & SECTIONS 1 & 12, T17S-R13E ST. MARY PARISH, LOUISIANA					
	T. BAKER SMITH 1913 <small>A CENTURY OF SOLUTIONS</small> <small>17634 Old Jefferson Hwy, Suite D-1,</small> <small>Princetonville, LA 70769</small> <small>(225)744-2100 - tbsmith.com</small>	2013			
REV. NO:	00	REV. DATE:	--/--	REV. BY:	---
REVISION DESCRIPTION:					
-					