

JOINT PUBLIC NOTICE

September 7, 2020

United States Army
Corps of Engineers
New Orleans District
Operations Division
Post Office Box 60267
New Orleans, Louisiana 70160-0267

State of Louisiana
Department of Environmental Quality
ATTN: Water Quality Certifications
Post Office Box 4313
Baton Rouge, Louisiana 70821-4313

(504) 862-2675

(225) 219-3225

Jamie.M.Crowe@usace.army.mil

Project Manager

Project Manager

Jamie Crowe

Elizabeth Hill

Permit Application Number

WQC Application Number

MVN 2011-03012 CO

408-MVN-2020-0015

WQC 200828-01

Interested parties are hereby notified that a permit application has been received by the New Orleans District of the U.S. Army Corps of Engineers pursuant to: [X] Section 10 of the Rivers and Harbors Act of March 3, 1899 (30 Stat. 1151; 33 USC 403); and/or [X] Section 404 of the Clean Water Act (86 Stat. 816; 33 USC 1344) and [X] Section 14 of the Rivers and Harbors Act of 1899 (33 U.S.C. Section 408).

Application has also been made to the Louisiana Department of Environmental Quality, Water Quality Certifications, for a Water Quality Certification (WQC) in accordance with statutory authority contained in LRS30:2047 A(3), and provisions of Section 401 of the Clean Water Act (P.L.95-17).

SHIP TERMINAL IN THE MISSISSIPPI RIVER IN ASCENSION PARISH

NAME OF APPLICANT: Houmas House and Gardens, c/o Northeast Technical Services Company (NETSCo), 11700 Station Road, Columbia Station, Ohio 44028.

LOCATION OF WORK: Within the Mississippi River Basin, in the Lower Mississippi River – Baton Rouge hydrologic unit (HUC 08070100); in the Mississippi River, left descending bank, mile 170.5, in Darrow, Louisiana, in Ascension Parish.

CHARACTER OF WORK: The applicant has requested authorization to clear an area in the Mississippi River batture to allow for construction of a facility for docking river cruise vessels. The dock will connect to a viewing area on top of the levee and the Houmas House facility on the protected side of the levee. The applicant will install seven 36-inch vertical piles, six 12-inch batter piles, four 24-inch batter piles, two 16-inch vertical piles, and sixteen 24-inch piles to support a series

of four floating 14'x14' platforms and five gangways. Approximately 1 acre of vegetated wetlands will be temporarily impacted by staging and construction. Within the staging/construction corridor, a maximum of 1,613 cubic yards of riprap will be placed in the batture. Upon completion of construction, the project will be restored to pre-project elevations and allowed to restore naturally. An additional 190 cubic yards of riprap will be discharged in approximately 0.04 acre of open water around the pilings for revetment repair. As compensation for unavoidable wetland impacts the applicant proposes to purchase wetland credits from a Corps approved mitigation bank located in the watershed.

The comment period for the Department of the Army Permit and the Louisiana Department of Environmental Quality WQC will close **30 days** from the date of this joint public notice. Written comments, including suggestions for modifications or objections to the proposed work, stating reasons thereof, are being solicited from anyone having interest in this permit and/or this WQC request and must be mailed so as to be received before or by the last day of the comment period. Letters concerning the Corps of Engineers permit application must reference the applicant's name and the Permit Application Number, and be mailed to the Corps of Engineers at the address above, **ATTENTION: REGULATORY BRANCH**. **Similar letters concerning the Water Quality Certification must reference the applicant's name and the WQC Application number and be mailed to the Louisiana Department of Environmental Quality at the address above.**

The application for this proposed project is on file with the Louisiana Department of Environmental Quality and may be examined during weekdays between 8:00 a.m. and 4:30 p.m. Copies may be obtained upon payment of costs of reproduction.

Corps of Engineers Permit Criteria

The decision whether to issue a 10/404 permit will be based on an evaluation of the probable impacts, including cumulative impacts of the proposed activity on the public interest. That decision will reflect the national concern for both protection and utilization of important resources. The benefit which reasonably may be expected to accrue from the proposal must be balanced against its reasonably foreseeable detriments. All factors which may be relevant to the proposal will be considered including the cumulative effects thereof; among those are conservation, economics, aesthetics, general environmental concerns, wetlands, historic properties, fish and wildlife values, flood hazards, floodplain values, land use, navigation, shoreline erosion and accretion, recreation, water supply and conservation, water quality, energy needs, safety, food and fiber production, mineral needs, considerations of property ownership and, in general, the needs and welfare of the people.

This request will also be reviewed pursuant to Section 408 and USACE Engineering Circular (EC) 1165-2-220, which provides policy and procedural guidance for processing requests to alter USACE civil works projects.

The decision whether to grant permission for the requested alteration will be based on several

factors. The benefits that reasonably may be expected to accrue from the proposal will be balanced against its reasonably foreseeable detriments. Review of the requests for modification will be reviewed by a USACE technical review team considering the following factors:

1) Potential to Impair the Usefulness of the Project. Proposed alterations will be reviewed to determine whether the alteration would limit the ability of the USACE project to function as authorized, or would compromise or change any authorized project conditions, purposes or outputs. If USACE determines that the usefulness of the authorized project would be impaired, the request will be denied.

2) Potential to be Injurious to the Public Interest. Proposed alterations will be reviewed to determine the probable impacts, including cumulative impacts, on the public interest. Factors that may be relevant to the public interest depend upon the type of USACE project being altered and may include, but are not limited to, such things as conservation, economic development, historic properties, cultural resources, environmental impacts, water supply, water quality, flood hazards, floodplains, residual risk, induced damages, navigation, shore erosion or accretion, and recreation. This evaluation will consider information received from the interested parties, including tribes, agencies, and the public. The decision whether to approve an alteration will be determined by the consideration of whether benefits are commensurate with risks. If the potential detriments are found to outweigh the potential benefits, then it may be determined that the proposed alteration is injurious to the public interest.

The U.S. Army Corps of Engineers is soliciting comments from the public, federal, state, and local agencies and officials, Indian Tribes, and other interested parties in order to consider and evaluate the impacts of this proposed activity. Any comments received will be considered by the U.S. Army Corps of Engineers to determine whether to make, modify, condition, or deny a permit for this proposal. To make this decision, comments are used to assess impacts on endangered species, historic properties, water quality, general environmental effects, and other public interest factors listed above. Comments are used in the preparation of an Environmental Assessment and/or an Environmental Impact Statement pursuant to the National Environmental Policy Act. Comments are also used to determine the need for a public hearing and to determine the overall public interest of the proposed activity. Further, all factors that may be relevant to the proposal will be considered, including the potential cumulative effects associated with the proposed project. The Section 408 review will consider the potential impact to the usefulness of the Federal project and whether the proposed alteration would be injurious to the public interest. Policy and legal compliance will also be considered.

The New Orleans District is unaware of properties listed on the National Register of Historic Places near the proposed work. The possibility exists that the proposed work may damage or destroy presently unknown archeological, scientific, prehistorical, historical sites, or data. Issuance of this public notice solicits input from the State Archeologist and State Historic Preservation Officer regarding potential impacts to cultural resources.

Our initial finding is that the proposed work is Not Likely to Adversely Affect any species listed as endangered by the U.S. Departments of Interior or Commerce, nor affect any habitat designated as critical to the survival and recovery of any endangered species.

The New Orleans District has determined that the proposed project is not likely to adversely affect the west Indian manatee (*Trichechus manatus*) or pallid sturgeon (*Scaphirhynchus albus*), provided the Standard Manatee Conditions for In-Water Activities are included in the authorization. No other known endangered/threatened species will be impacted by the proposed activity. These determinations are based on Information & Planning Consultation for Endangered Species in Louisiana (IPaC) agreement dated January 27, 2020 between the US Army Corps of Engineers, New Orleans District and US Fish and Wildlife Service, Ecological Services Office.

This notice initiates the Essential Fish Habitat (EFH) consultation requirements of the Magnuson-Stevens Fishery Conservation and Management Act. The applicant's proposal would result in the destruction or alteration of **1.04 acres** of EFH utilized by various life stages of red drum and penaeid shrimp. Our initial determination is that the proposed action would not have a substantial adverse impact on EFH or federally managed fisheries in the Gulf of Mexico. Our final determination relative to project impacts and the need for mitigation measures is subject to review by and coordination with the National Marine Fisheries Service.

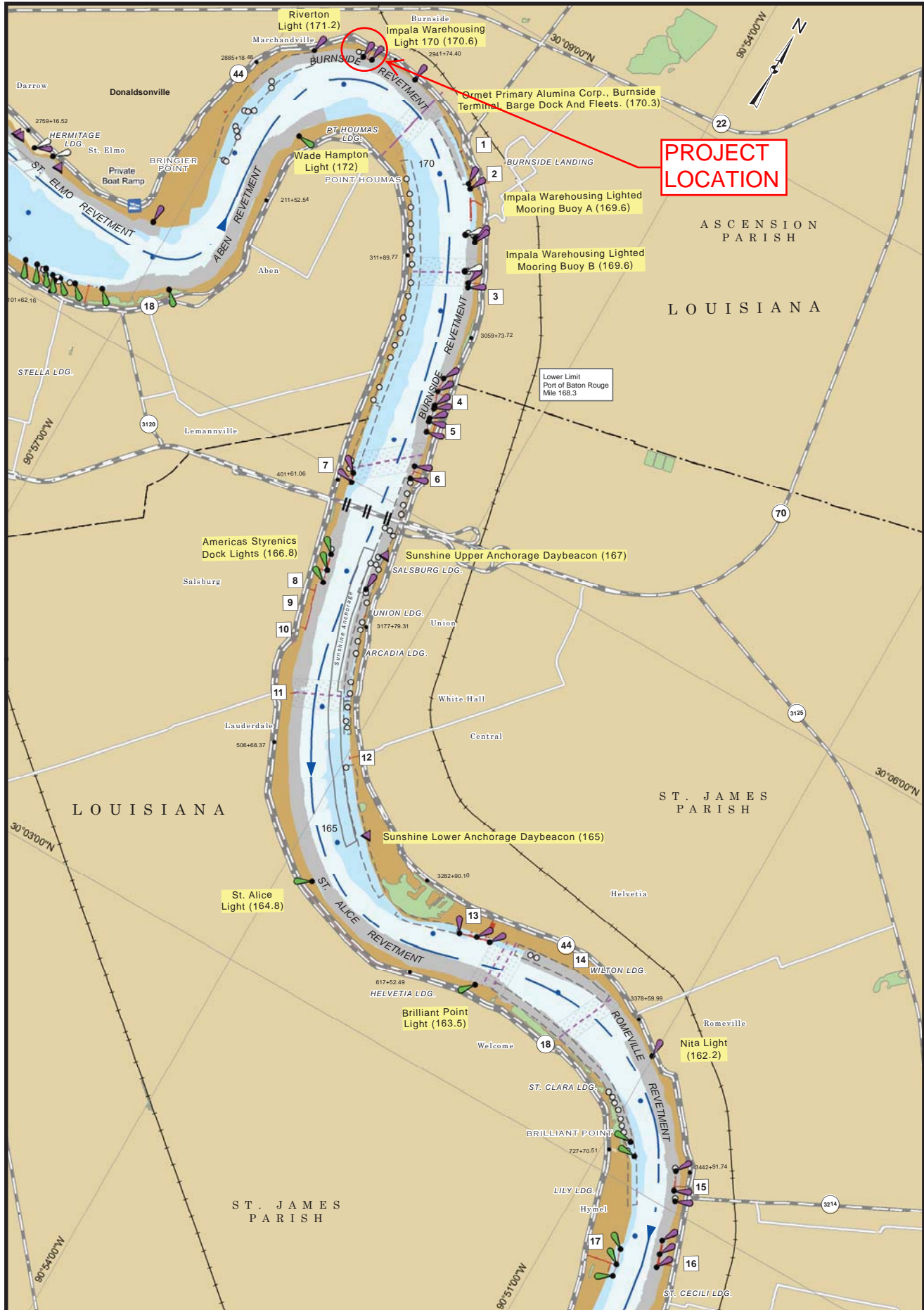
If the proposed work involves deposits of dredged or fill material into navigable waters, the evaluation of the probable impacts will include the application of guidelines established by the Administrator of the Environmental Protection Agency. Also, a certification that the proposed activity will not violate applicable water quality standards will be required from the Department of Environmental Quality, Water Quality Certifications, before a permit is issued.

Any person may request, in writing, within the comment period specified in this notice, that a public hearing be held to consider this application. Requests for public hearings shall state, with particularity, the reasons for holding a public hearing.

You are requested to communicate the information contained in this notice to any other parties whom you deem likely to have interest in the matter.

John M. Herman
Chief, Central Evaluation Section
Regulatory Branch

Enclosure



REFERENCE DWGS	
4	US ARMY CORPS OF ENGINEERS H-18-45204 REPAIR PROCEDURES REQUIRED WHEN PENETRATING REVETMENTS WITH PILES, CAISSONS AND/OR PILE CLUSTERS
3	US ARMY CORPS OF ENGINEERS MISSISSIPPI RIVER HYDROGRAPHIC SURVEY BOOK 2013
2	DEPT. OF TRANSPORTATION AND DEVELOPMENT SITE SURVEY
1	DEPT. OF TRANSPORTATION AND DEVELOPMENT BRIDGE AND LEVEE PATH CONSTRUCTION SPECIFICATION
No.	Dwg. No. Title

This drawing is the property of **Netasco**. All ideas, design, and arrangements herein are intended to be used in connection with this specific product/project. Copying and or transmittal to others for any other than that for which it is intended and provided for is prohibited without the expressed permission and consent of **Netasco**.

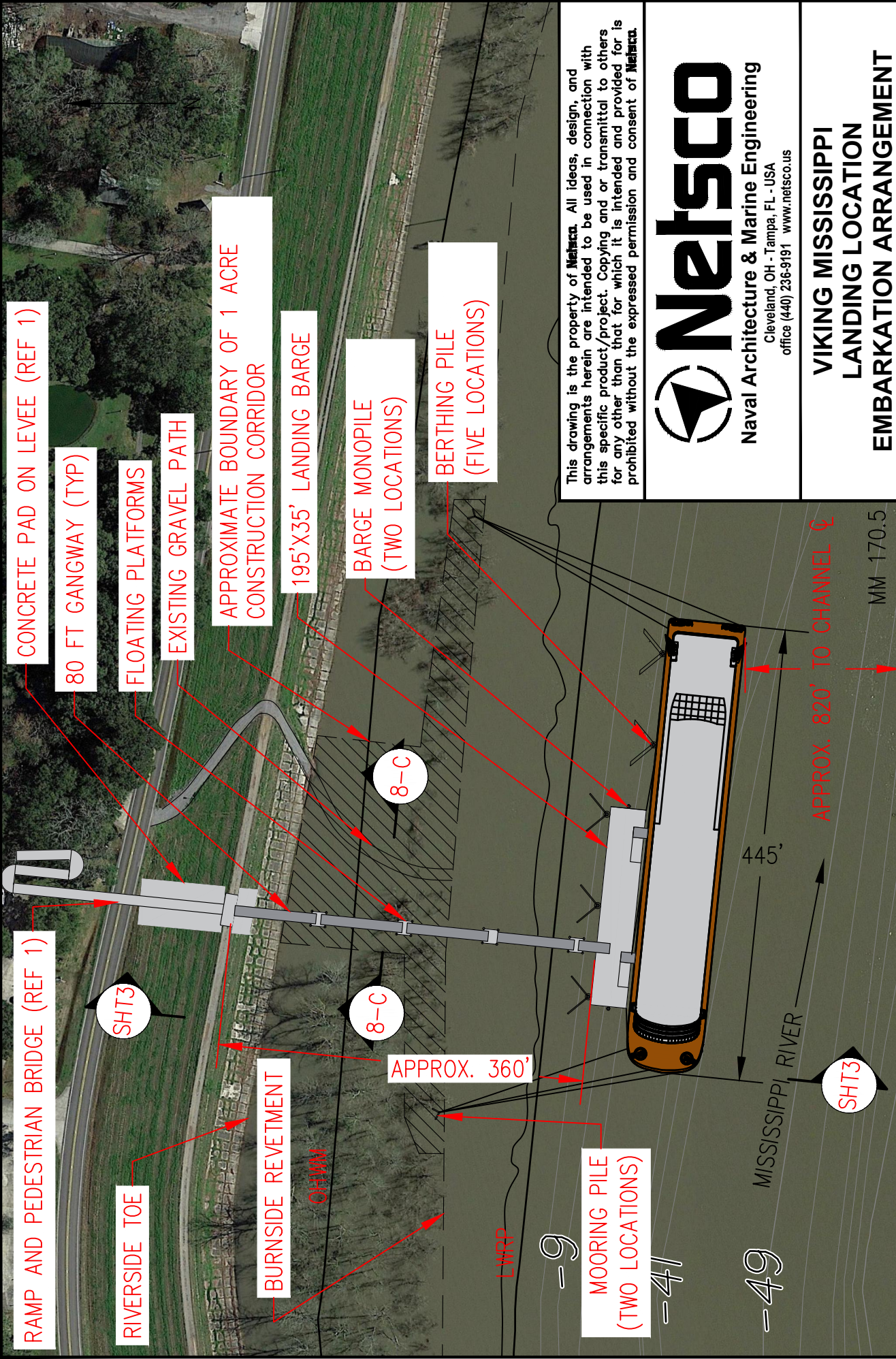


Netasco
 Naval Architecture & Marine Engineering
 Cleveland, OH - Tampa, FL - USA
 office (440) 236-9191 www.netasco.us

**VIKING MISSISSIPPI
 LANDING LOCATION
 EMBARKATION ARRANGEMENT**

VIKING RIVER CRUISES Drawing No: J6770-N15-1-4

Scale: AS NOTED Revision: B SHT 1 of 11 Size A



CONCRETE PAD ON LEVEE (REF 1)

80 FT GANGWAY (TYP)

FLOATING PLATFORMS

EXISTING GRAVEL PATH

APPROXIMATE BOUNDARY OF 1 ACRE CONSTRUCTION CORRIDOR

195'X35' LANDING BARGE

BARGE MONOPILE (TWO LOCATIONS)

BERTHING PILE (FIVE LOCATIONS)

RAMP AND PEDESTRIAN BRIDGE (REF 1)

RIVERSIDE TOE

BURNSIDE REVETMENT

CHANN

APPROX. 360'

MOORING PILE (TWO LOCATIONS)

HOUMAS HOUSE MOORING LOCATION

SCALE: 1/128"=1'-0"

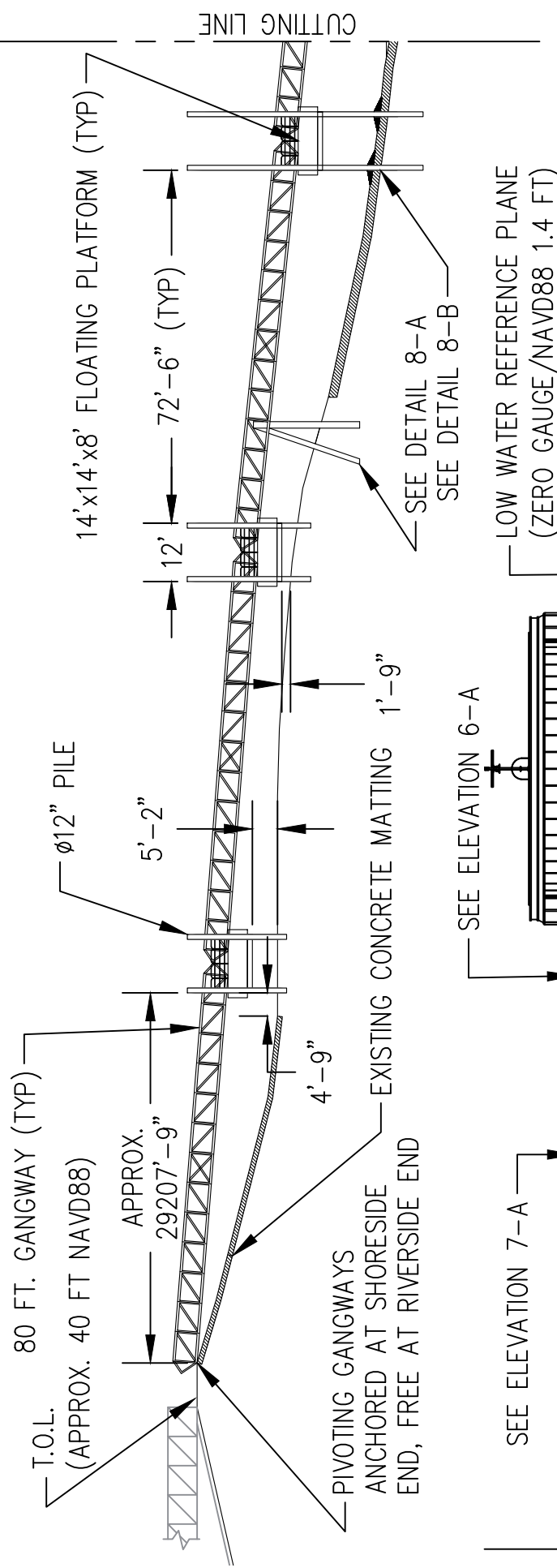
This drawing is the property of **NetSCO**. All ideas, design, and arrangements herein are intended to be used in connection with this specific product/project. Copying and or transmittal to others for any other than that for which it is intended and provided for is prohibited without the expressed permission and consent of **NetSCO**.



Naval Architecture & Marine Engineering
Cleveland, OH - Tampa, FL - USA
office (440) 236-9191 www.netSCO.us

VIKING MISSISSIPPI LANDING LOCATION EMBARKATION ARRANGEMENT

VIKING RIVER CRUISES		Drawing No: J6770-N15-1-4	Size A
Scale: AS NOTED	Revision: B	SHT 2 of 11	



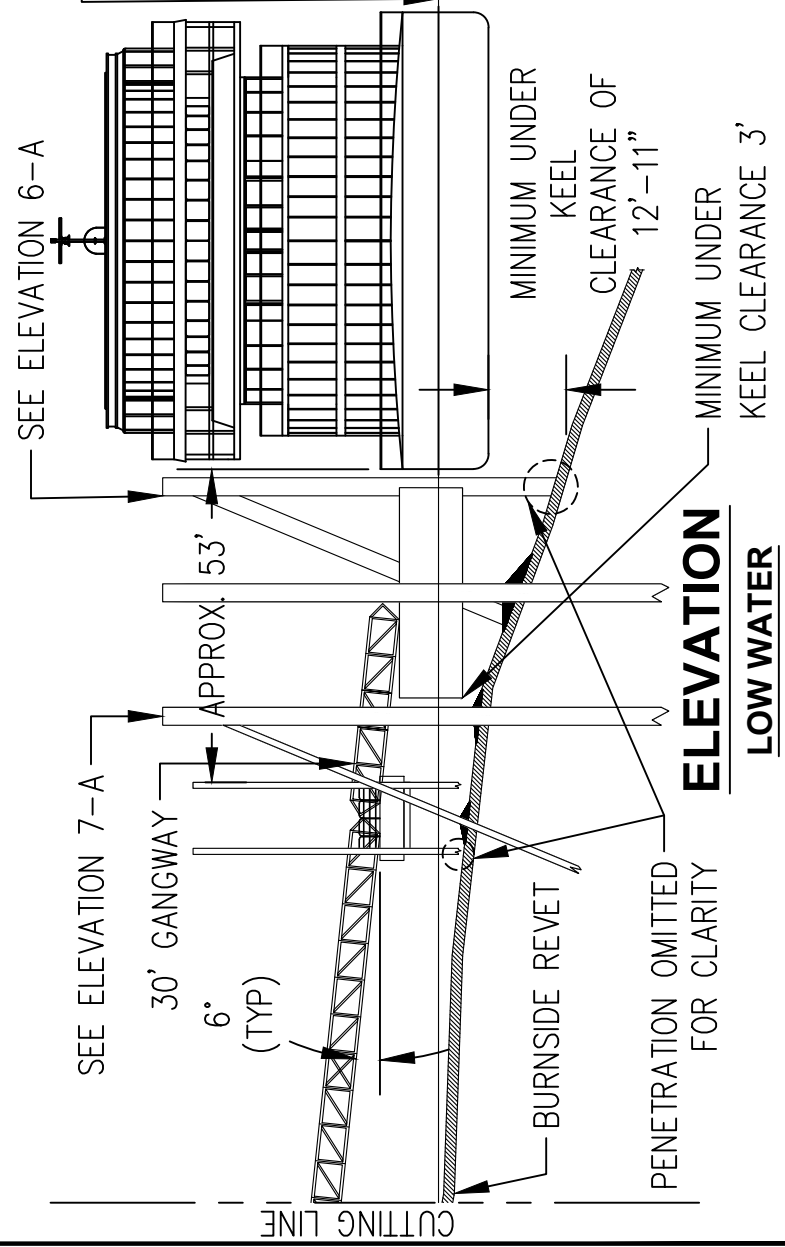
This drawing is the property of **NetSCO**. All ideas, design, and arrangements herein are intended to be used in connection with this specific product/project. Copying and or transmittal to others for any other than that for which it is intended and provided for is prohibited without the expressed permission and consent of **NetSCO**.



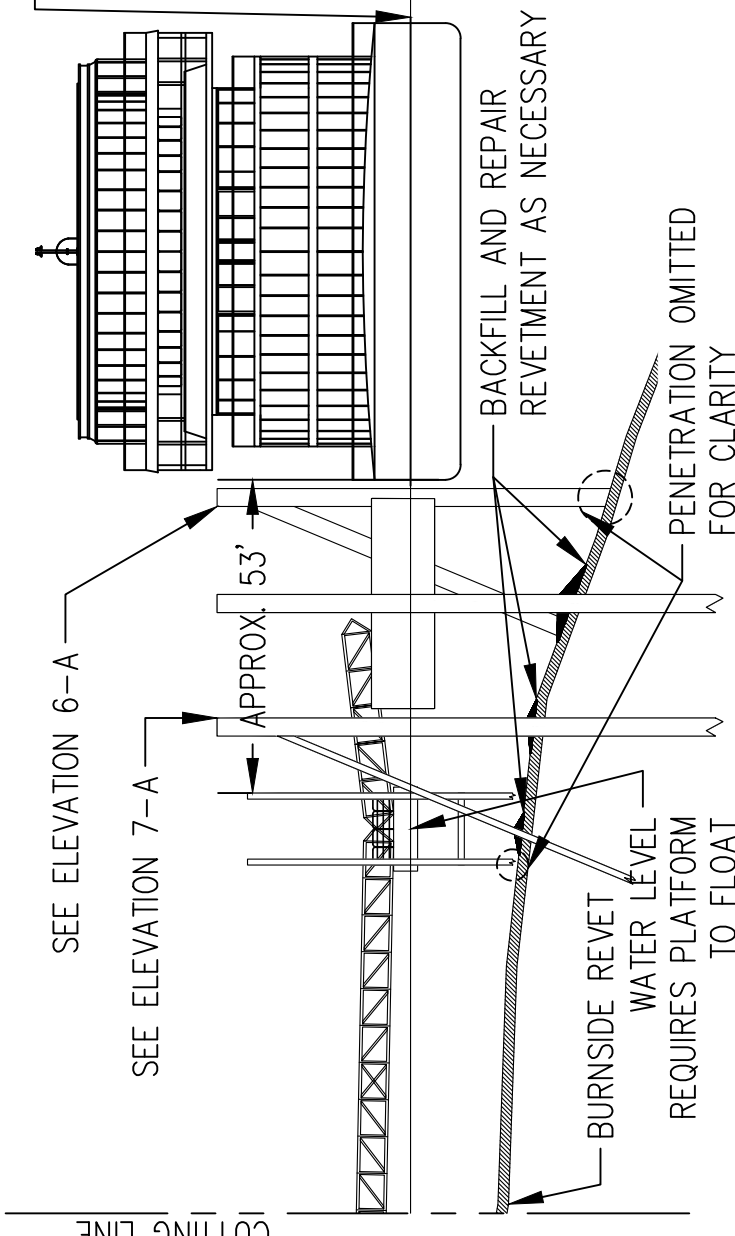
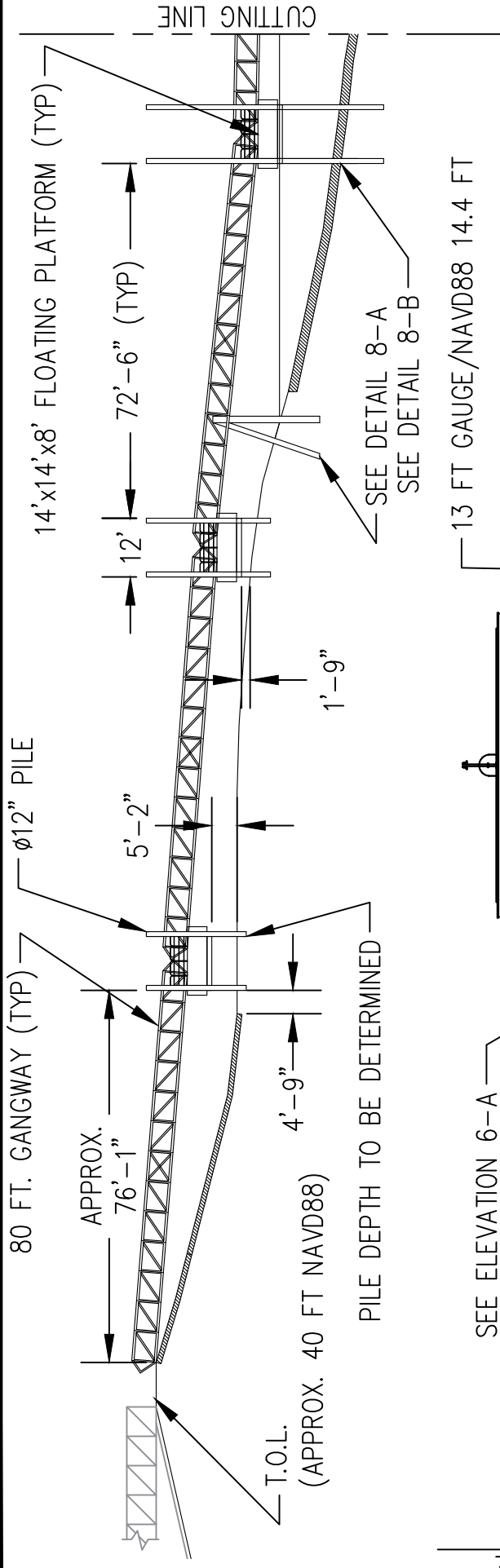
Naval Architecture & Marine Engineering
 Cleveland, OH - Tampa, FL - USA
 office (440) 236-9191 www.netSCO.us

**VIKING MISSISSIPPI
 LANDING LOCATION
 EMBARKATION ARRANGEMENT**

VIKING RIVER CRUISES	Drawing No: J6770-N15-1-4	Size A
Scale: AS NOTED	Revision: B	SHT 3 of 11



ELEVATION
 LOW WATER
 SCALE: 1/32"=1'-0"



ELEVATION
MEDIAN GAUGE
SCALE: 1/32"=1'-0"

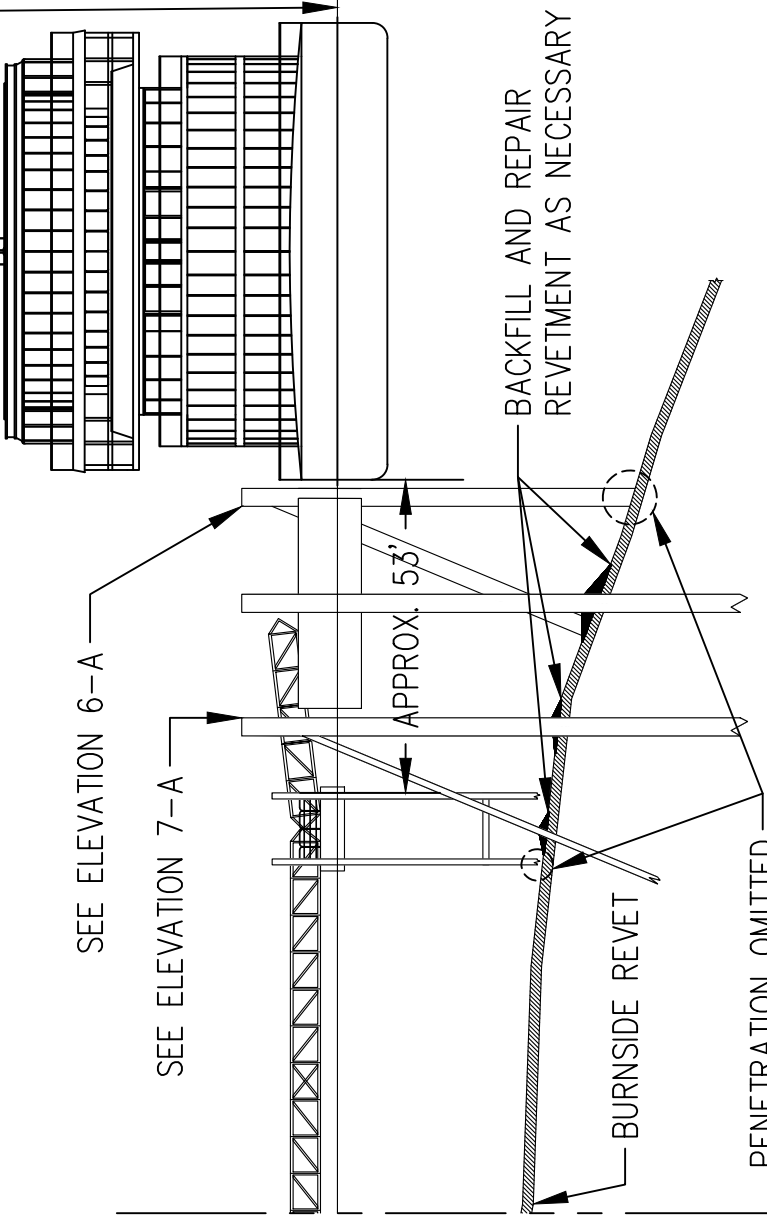
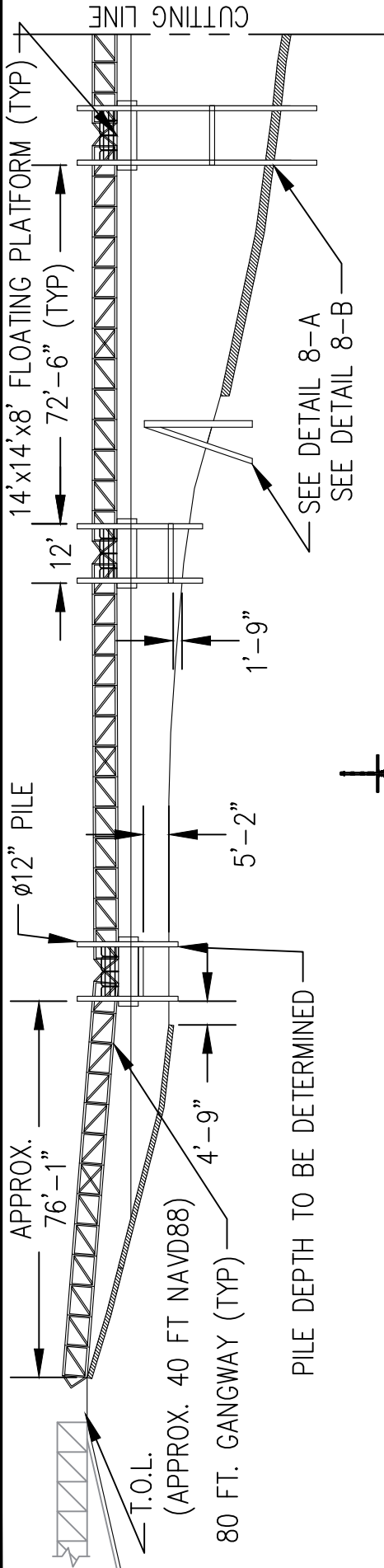
This drawing is the property of **Netasco**. All ideas, design, and arrangements herein are intended to be used in connection with this specific product/project. Copying and or transmittal to others for any other than that for which it is intended and provided for is prohibited without the expressed permission and consent of **Netasco**.



Naval Architecture & Marine Engineering
 Cleveland, OH - Tampa, FL - USA
 office (440) 236-9191 www.netasco.us

**VIKING MISSISSIPPI
 LANDING LOCATION
 EMBARKATION ARRANGEMENT**

VIKING RIVER CRUISES		Drawing No: J6770-N15-1-4	Size A
Scale: AS NOTED	Revision: B	SHT 4 of 11	



This drawing is the property of **NetSCO**. All ideas, design, and arrangements herein are intended to be used in connection with this specific product/project. Copying and or transmittal to others for any other than that for which it is intended and provided for is prohibited without the expressed permission and consent of **NetSCO**.



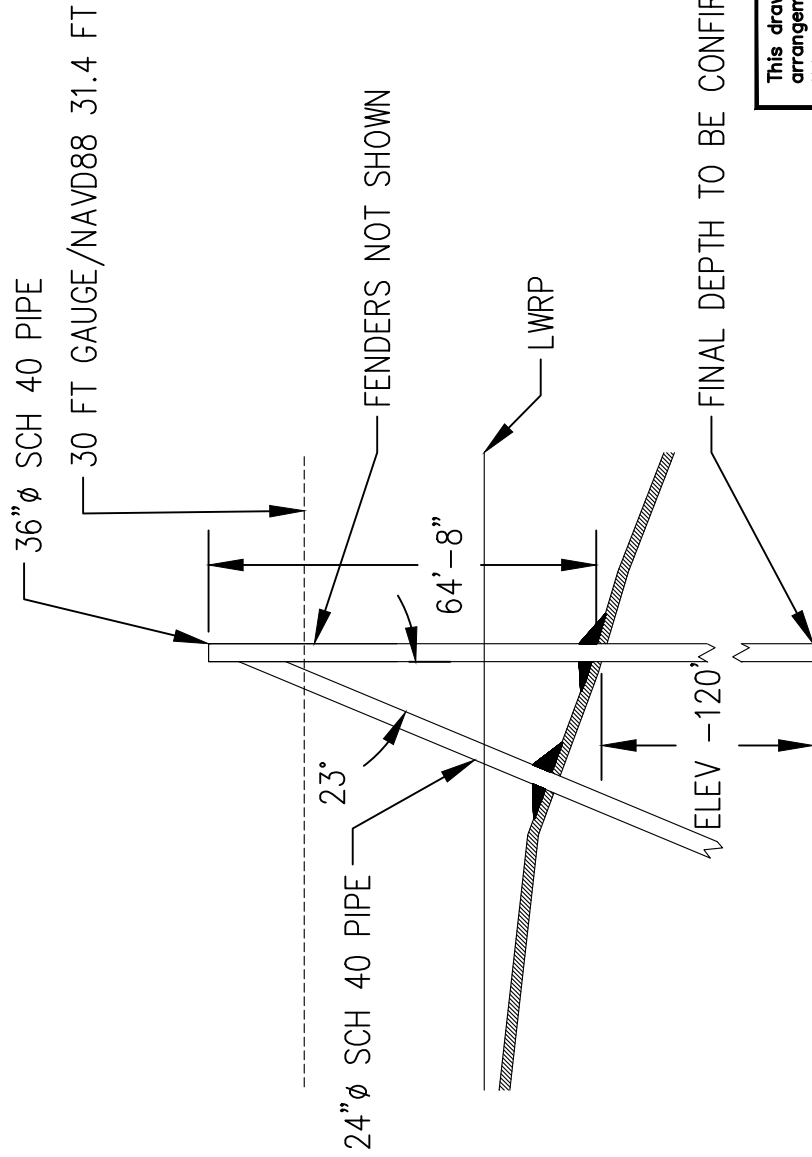
Naval Architecture & Marine Engineering
 Cleveland, OH - Tampa, FL - USA
 office (440) 236-9191 www.netSCO.us

**VIKING MISSISSIPPI
 LANDING LOCATION
 EMBARKATION ARRANGEMENT**

VIKING RIVER CRUISES Drawing No: J6770-N15-1-4

Scale: AS NOTED Revision: B SHT 5 of 11 Size A

ELEVATION
 HIGH WATER
 SCALE: 1/32"=1'-0"



ELEVATION 6-A
BERTHING DOLPHIN (QTY: 2)
SCALE: 1/32"=1'-0"

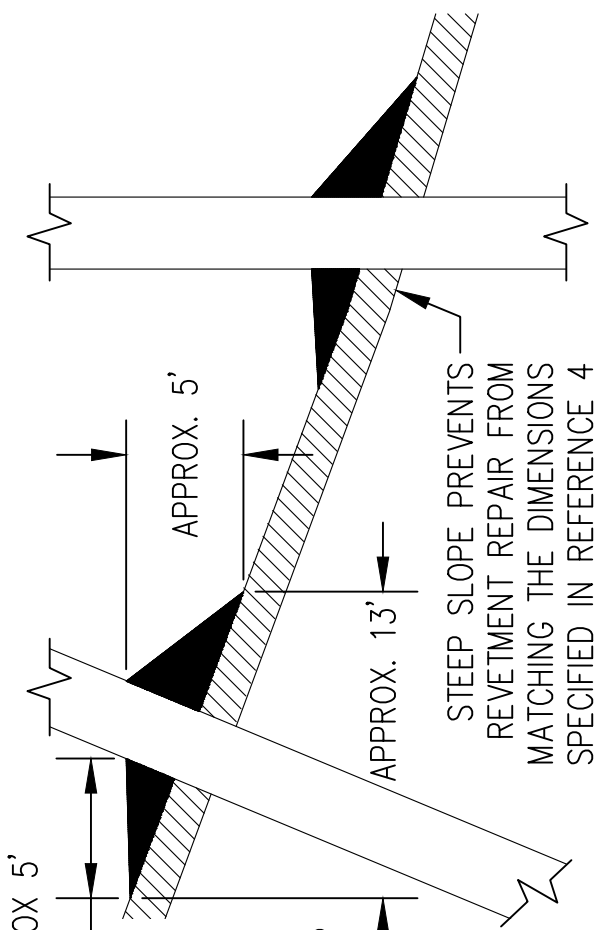
This drawing is the property of **Netasco**. All ideas, design, and arrangements herein are intended to be used in connection with this specific product/project. Copying and or transmittal to others for any other than that for which it is intended and provided for is prohibited without the expressed permission and consent of **Netasco**.



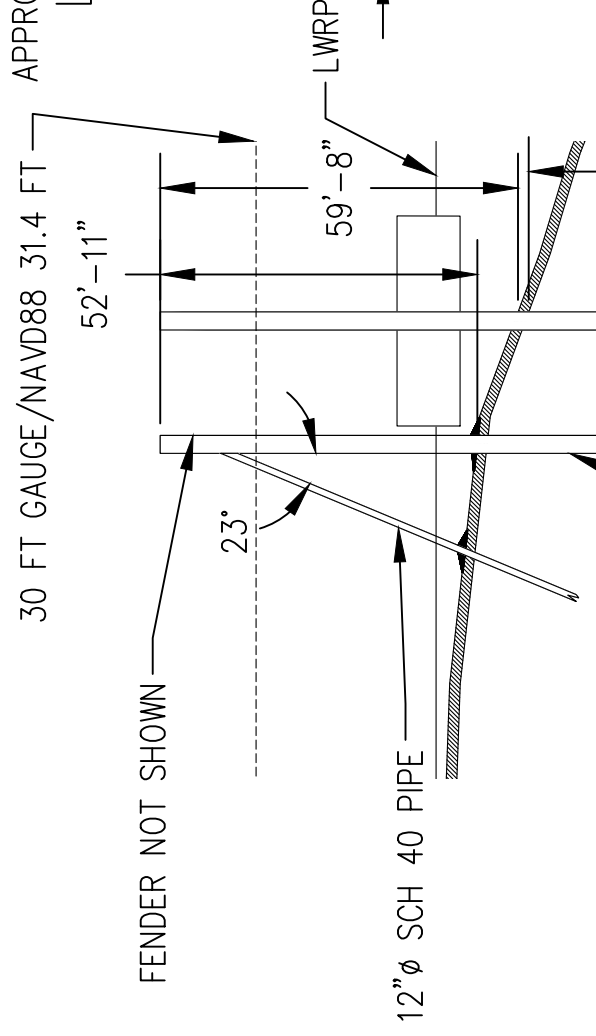
Naval Architecture & Marine Engineering
 Cleveland, OH - Tampa, FL - USA
 office (440) 236-9191 www.netasco.us

**VIKING MISSISSIPPI
 LANDING LOCATION
 EMBARKATION ARRANGEMENT**

VIKING RIVER CRUISES		Drawing No: J6770-N15-1-4	Size A
Scale: AS NOTED	Revision: B	SHT 6 of 11	



ELEVATION 7-A
BARGE BERTHING DOLPHIN (QTY 3)
BARGE MONOPILE (QTY 2)
SCALE: 1/32"=1'-0"



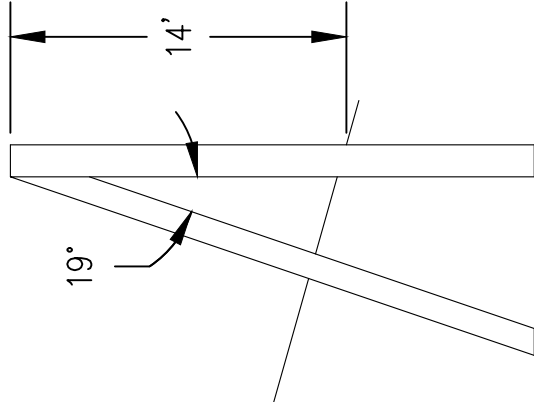
ELEVATION 7-B
TYPICAL BERTHING PILE REVETMENT REPAIR
SCALE: 1/8"=1'-0"

This drawing is the property of **NetSCO**. All ideas, design, and arrangements herein are intended to be used in connection with this specific product/project. Copying and or transmittal to others for any other than that for which it is intended and provided for is prohibited without the expressed permission and consent of **NetSCO**.



Naval Architecture & Marine Engineering
 Cleveland, OH - Tampa, FL - USA
 office (440) 236-9191 www.netSCO.us

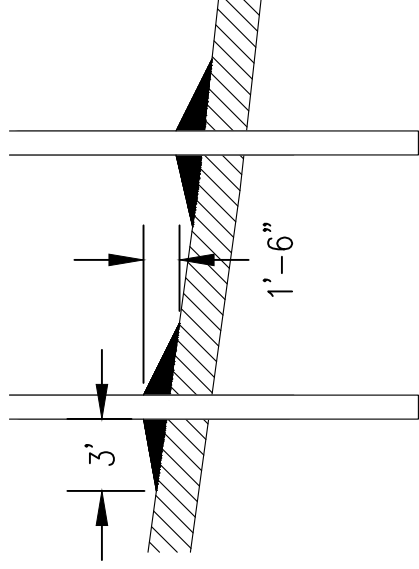
VIKING MISSISSIPPI LANDING LOCATION EMBARKATION ARRANGEMENT	
VIKING RIVER CRUISES	Drawing No: J6770-N15-1-4
Scale: AS NOTED	Revision: B
SHT 7 of 11	Size A



ELEVATION 8-A

MOORING PILES (QTY: 2)

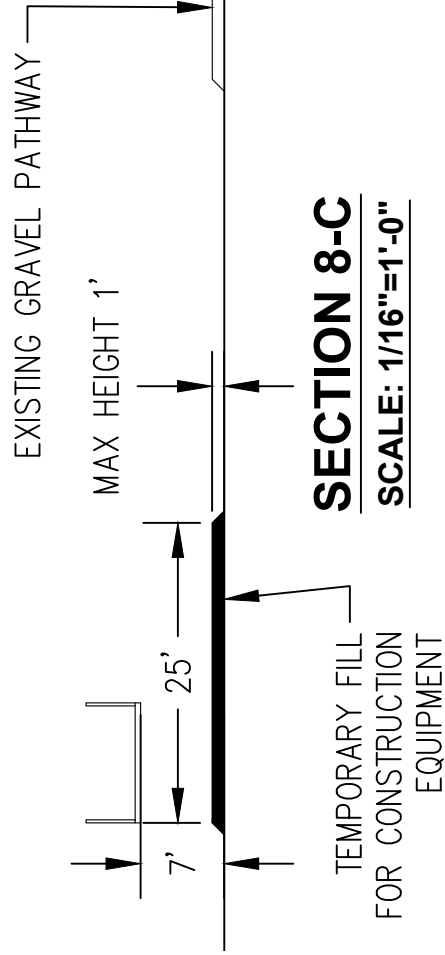
SCALE: 1/8"=1'-0"



ELEVATION 8-B

TYPICAL PLATFORM PILE REVETMENT REPAIR

SCALE: 1/8"=1'-0"



SECTION 8-C

SCALE: 1/16"=1'-0"

This drawing is the property of **NetSCO**. All ideas, design, and arrangements herein are intended to be used in connection with this specific product/project. Copying and or transmittal to others for any other than that for which it is intended and provided for is prohibited without the expressed permission and consent of **NetSCO**.

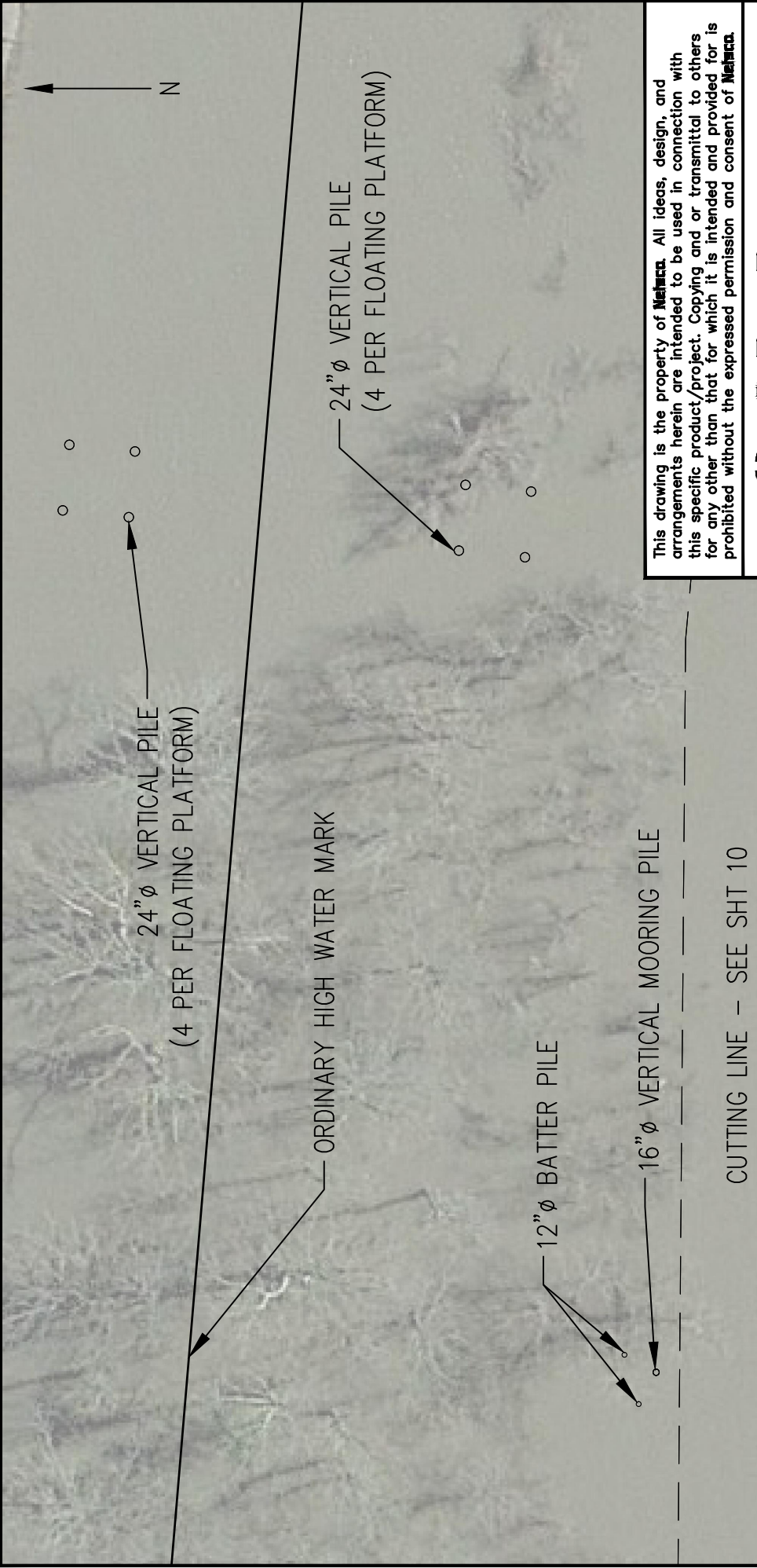


Naval Architecture & Marine Engineering
 Cleveland, OH - Tampa, FL - USA
 office (440) 236-9191 www.netSCO.us

**VIKING MISSISSIPPI
 LANDING LOCATION
 EMBARKATION ARRANGEMENT**

VIKING RIVER CRUISES Drawing No: **J6770-N15-1-4**

Scale: AS NOTED	Revision: B	SHT 8 of 11	Size A
-----------------	-------------	-------------	-----------



This drawing is the property of **NetSCO**. All ideas, design, and arrangements herein are intended to be used in connection with this specific product/project. Copying and or transmittal to others for any other than that for which it is intended and provided for is prohibited without the expressed permission and consent of **NetSCO**.



Naval Architecture & Marine Engineering
 Cleveland, OH - Tampa, FL - USA
 office (440) 236-9191 www.netSCO.us

**VIKING MISSISSIPPI
 LANDING LOCATION
 EMBARKATION ARRANGEMENT**

VIKING RIVER CRUISES Drawing No: J6770-N15-1-4

Scale: AS NOTED Revision: B SHT 9 of 11 Size A

PILE PLAN

SCALE: 1/32"=1'-0"

CUTTING LINE - SEE SHT 10

CUTTING LINE - SEE SHT 9

LOW WATER REFERENCE PLANE
(CONTOURS BELOW LWRP ARE
EXPRESSED IN 5 AND 10 FT.
INTERVALS, PER REFERENCE 3)

SEE ELEVATION 8-B

24" ϕ VERTICAL PILE W/ 8' ϕ REVETMENT REPAIR
(4 PER FLOATING PLATFORM)

24" ϕ VERTICAL PILE W/ 8' ϕ REVETMENT REPAIR
(4 PER FLOATING PLATFORM)

12" ϕ BATTER PILE
W/ 7' ϕ REVETMENT REPAIR

12" ϕ BATTER PILE
W/ 7' ϕ REVETMENT REPAIR

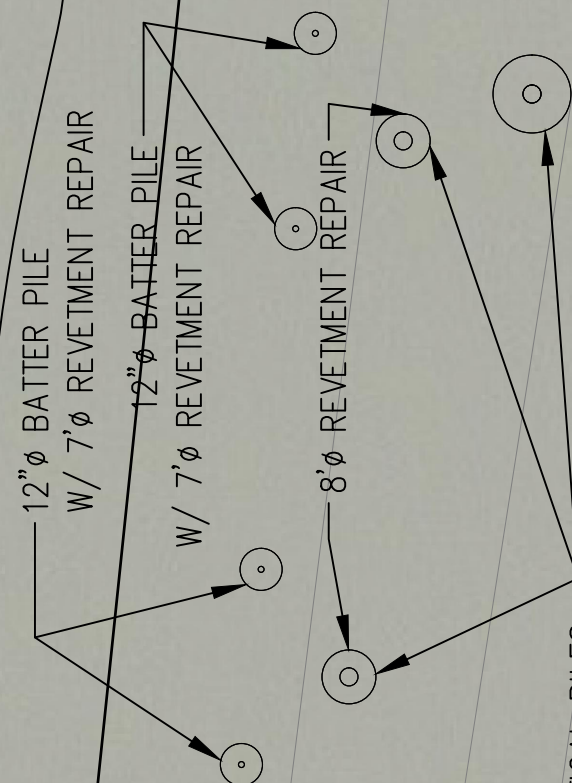
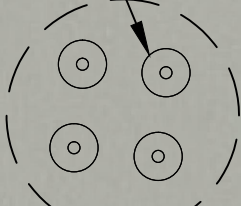
8' ϕ REVETMENT REPAIR

8' ϕ REVETMENT REPAIR

36" ϕ VERTICAL PILES

SEE ELEVATION 8-B

13' ϕ REVETMENT REPAIR



Naval Architecture & Marine Engineering
Cleveland, OH - Tampa, FL - USA
office (440) 236-9191 www.netsco.us

This drawing is the property of **Netsco**. All ideas, design, and arrangements herein are intended to be used in connection with this specific product/project. Copying and or transmittal to others for any other than that for which it is intended and provided for is prohibited without the expressed permission and consent of **Netsco**.

VIKING MISSISSIPPI LANDING LOCATIONS EMBARKATION ARRANGEMENT

VIKING RIVER CRUISES

Drawing No:
J6770-N15-1-4

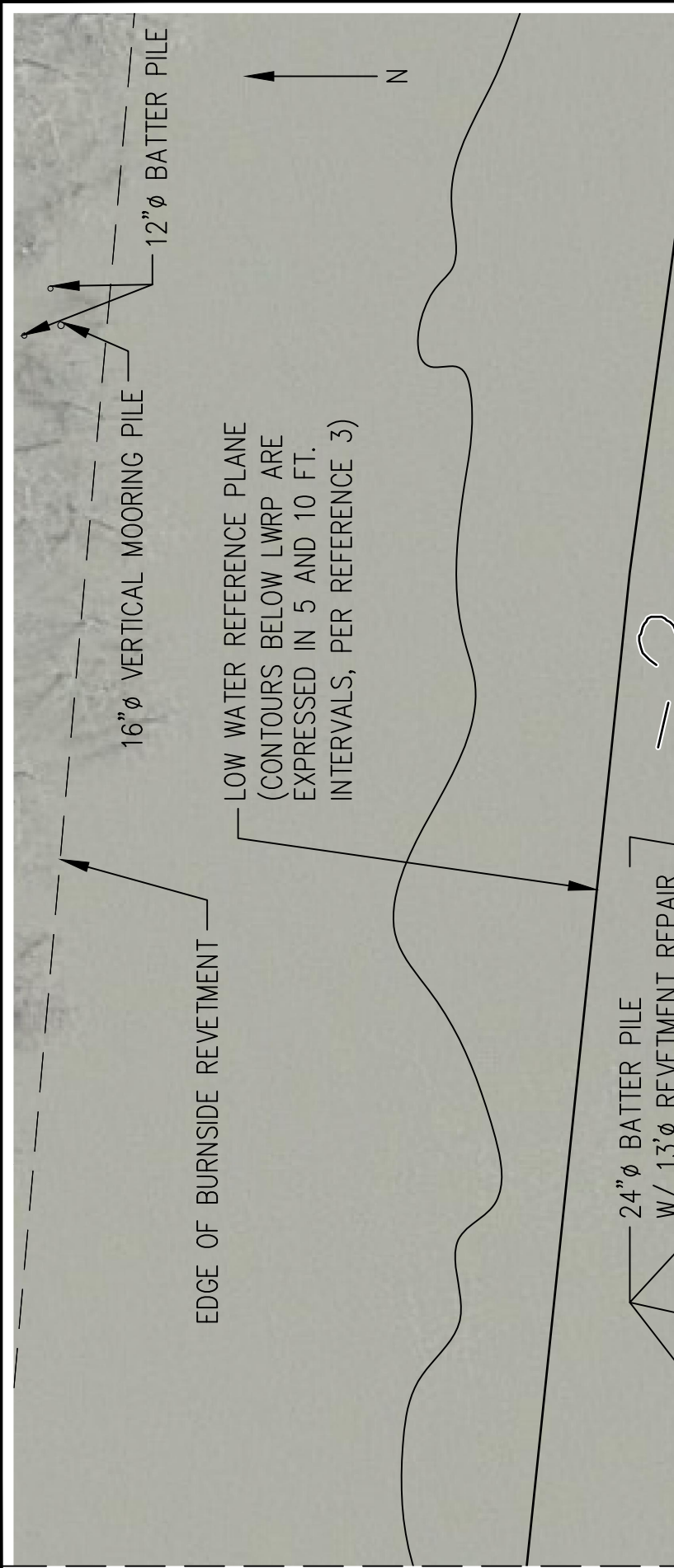
Scale: AS NOTED Revision: B

SHT 10 of 11

Size
A

PILE PLAN

SCALE: 1/32"=1'-0"



This drawing is the property of **NetSCO**. All ideas, design, and arrangements herein are intended to be used in connection with this specific product/project. Copying and or transmittal to others for any other than that for which it is intended and provided for is prohibited without the expressed permission and consent of **NetSCO**.

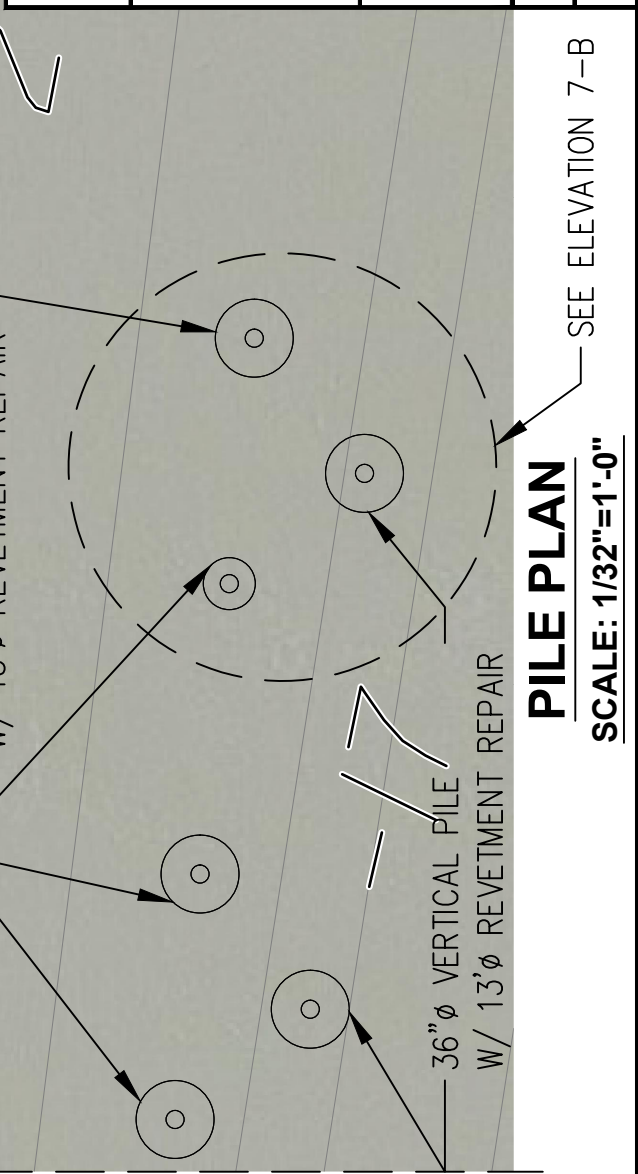


Naval Architecture & Marine Engineering
 Cleveland, OH - Tampa, FL - USA
 office (440) 236-9191 www.netSCO.us

**VIKING MISSISSIPPI
 LANDING LOCATION
 EMBARKATION ARRANGEMENT**

VIKING RIVER CRUISES Drawing No: J6770-N15-1-4

Scale: AS NOTED Revision: B SHT 11 of 11 Size: A



CUTTING LINE - SEE SHT 10

PILE PLAN
 SCALE: 1/32"=1'-0"

SEE ELEVATION 7-B