

# JOINT PUBLIC NOTICE

7 August 17

United States Army Corps of Engineers  
New Orleans District  
Regulatory Branch  
7400 Leake Avenue  
New Orleans, Louisiana 70118

State of Louisiana  
Department of Environmental Quality  
Office of Environmental Services  
Post Office Box 4313  
Baton Rouge, Louisiana 70821-4313

(504) 862-1588  
Project Manager  
Glenn E. Dobson Jr.  
glenn.e.dobson@usace.army.mil  
MVN-2011-02065-CC

(225) 219-3225  
Project Manager  
Elizabeth Hill  
WQC Application Number  
WQC # 170725-01

Interested parties are hereby notified that a permit application has been received by the New Orleans District of the US Army Corps of Engineers pursuant to: [X] Section 10 of the Rivers and Harbors Act of March 3, 1899 (30 Stat. 1151; 33 USC 403); and/or [X] Section 404 of the Clean Water Act (86 Stat. 816; 33 USC 1344).

Application has also been made to the Louisiana Department of Environmental Quality, Office of Environmental Services, for a Water Quality Certification (WQC) in accordance with statutory authority contained in LRS 30:2074 A(3) and provisions of Section 401 of the Clean Water Act.

## **PROPOSED DUGAS CANAL DRAINAGE CONTROL STRUCTURE MODIFICATIONS AND DRAINAGE INFRASTRUCTURE IMPROVEMENTS IN LAFOURCHE PARISH**

**NAME OF APPLICANT:** Lafourche Parish Government, c/o David A. Waitz Engineering and Surveying, Inc., P.O. Box 1203, 1107 Canal Boulevard, Thibodaux, Louisiana 70302-1203.

**LOCATION OF WORK:** Dugas Canal and the Bayou Country Club Subdivision in Sections 4, 10 and 39, T15S-R16E and 17E, in Thibodaux, Louisiana, in Lafourche Parish, within the Terrebonne Basin in hydrologic unit (HUC 08090302), as shown on the attached drawings (Latitude 29.780308 N, Longitude -90.790478 W).

**CHARACTER OF WORK:** The applicant has requested Department of the Army authorization for the modification of the existing gravity drainage control structure and gates located on the Dugas Canal. The project involves saw-cutting the two existing 72-inch culverts and filling each with 20 cubic yards of concrete. Additionally approximately 1,000 cubic yards of fill will be added to plug the two 72-inch culverts in Dugas Canal. Approximately 1.3 acres of potentially jurisdictional Other Waters of United States would be impacted as a result of the revetment placement in the drainage ditch and fill placement for culvert closure via earthen plug installation. The project also involves construction of interior drainage improvements in the vicinity of Parkside Drive to reduce residential flooding effects during high intensity rain events. This will include the replacement or

modification of open and sub-surface drainage structures (or similar existing structures) in areas along and upstream of Parkside Drive and within the residential neighborhood commonly referred to as Bayou Country Club Subdivision. Approximately 520 cubic yards of concrete will be used to line the drainage ditch adjacent to Parkside drive and for the construction of a headwall where the ditch connects to the 40 Arpent Canal. A preliminary analysis has determined that wetlands may be present at the project site; however, extent of coverage and impacts are undetermined at this time pending a wetland delineation. It is anticipated that impacts to special aquatic sites will be negligible. An additional Public Notice may be required at a later date if the jurisdictional determination indicates project related impacts to wetlands.

It is presumed that the applicant has designed the project to avoid and minimize direct and secondary adverse impacts to the maximum extent practicable. Any further reduction to the drainage infrastructure improvements would not meet engineering construction standards at the project site.

The comment period for the Department of Army will close in **20 days** from the date of this joint public notice. Written comments, including suggestions for modifications or objections to the proposed work, stating reasons thereof, are being solicited from anyone having interest in this permit and/or this WQC request and must be mailed so as to be received before or by the last day of the comment period. Letters concerning the Corps of Engineers permit application must reference the applicant's name and the Permit Application Number, and be mailed to the Corps of Engineers at the address above, **ATTENTION: REGULATORY BRANCH**. Similar letters concerning the Water Quality Certification must reference the applicant's name and the WQC application number and be mailed to the Louisiana Department of Environmental Quality at the address above. Individuals or parties may request an extension of time in which to comment on the proposed work by writing or e-mailing the Corps of Engineers Project Manager listed above. Any request must be specific and substantively supportive of the requested extension, and received by this office prior to the end of the initial comment period. The Section Chief will review the request and the requestor will be promptly notified of the decision to grant or deny the request. If granted, the time extension will be continuous to the initial comment period and, inclusive of the initial comment period, will not exceed a total of 30 calendar days.

The application for this proposed project is on file with the Louisiana Department of Environmental Quality and may be examined during weekdays between 8:00 a.m. and 4:30 p.m. Copies may be obtained upon payment of costs of reproduction.

### **Corps of Engineers Permit Criteria**

The decision whether to issue a permit will be based on an evaluation of the probable impacts, including cumulative impacts of the proposed activity on the public interest. That decision will reflect the national concern for both protection and utilization of important resources. The benefit which reasonably may be expected to accrue from the proposal must be balanced against its reasonably foreseeable detriments. All factors which may be relevant to the proposal will be considered including the cumulative effects thereof; among those are conservation, economics, aesthetics, general environmental concerns, wetlands,

historic properties, fish and wildlife values, flood hazards, floodplain values, land use, navigation, shoreline erosion and accretion, recreation, water supply and conservation, water quality, energy needs, safety, food and fiber production, mineral needs, considerations of property ownership and, in general, the needs and welfare of the people.

The US Army Corps of Engineers is soliciting comments from the public, federal, state, and local agencies and officials, Indian Tribes, and other interested parties in order to consider and evaluate the impacts of this proposed activity. Any comments received will be considered by the US Army Corps of Engineers to determine whether to make, modify, condition, or deny a permit for this proposal. To make this decision, comments are used to assess impacts on endangered species, historic properties, water quality, general environmental effects, and other public interest factors listed above. Comments are used in the preparation of an Environmental Assessment and/or an Environmental Impact Statement pursuant to the National Environmental Policy Act. Comments are also used to determine the need for a public hearing and to determine the overall public interest of the proposed activity.

The New Orleans District is unaware of properties listed on the National Register of Historic Places near the proposed work. The possibility exists that the proposed work may damage or destroy presently unknown archeological, scientific, prehistorical, historical sites, or data. Copies of this notice are being sent to the State Archeologist and the State Historic Preservation Officer.

Our initial finding is that the proposed work would neither affect any species listed as endangered by the U.S. Departments of Interior or Commerce, nor affect any habitat designated as critical to the survival and recovery of any endangered species. Utilizing Standard Local Operating Procedure for Endangered Species in Louisiana (SLOPES), dated October 22, 2014, between the U.S. Army Corps of Engineers, New Orleans and U.S. Fish and Wildlife Service, Ecological Services Office, the Corps has determined that the proposed activity would have no effect on any listed species.

This notice initiates the Essential Fish Habitat (EFH) consultation requirements of the Magnuson-Stevens Fishery Conservation and Management Act. The applicant's proposal would result in the destruction or alteration of 0 acres of EFH. Our initial determination is that the proposed action would not have a substantial adverse impact on EFH or federally managed fisheries in the Gulf of Mexico. Our final determination relative to project impacts and the need for mitigation measures is subject to review by and coordination with the National Marine Fisheries Service.

If the proposed work involves deposits of dredged or fill material into navigable waters, the evaluation of the probable impacts will include the application of guidelines established by the Administrator of the Environmental Protection Agency. Also, a certification that the proposed activity will not violate water quality standards will be required from the Department of Environmental Quality, Office of Environmental Services before a permit is issued.

Any person may request, in writing, within the comment period specified in this notice, that a public hearing be held to consider this application. Requests for public hearings shall state, with particularity, the reasons for holding a public hearing. You are requested

to communicate the information contained in this notice to any other parties whom you deem likely to have interest in the matter.

The applicant has certified that the proposed activity described in the application complies with and will be conducted in a manner that is consistent with the Louisiana Coastal Resources Program (Louisiana Coastal Zone Application P20170482). The Department of the Army permit will not be issued unless the applicant received approval or a waiver of the Coastal Use Permit by the Department of Natural Resources.

for JOHN M. HERMAN  
Chief, Central Evaluation Section  
Regulatory Branch

Enclosures





## STATE VICINITY MAP

N.T.S.

PREPARED BY:

**DAVID A. WAITZ**

**ENGINEERING AND SURVEYING, INC.**

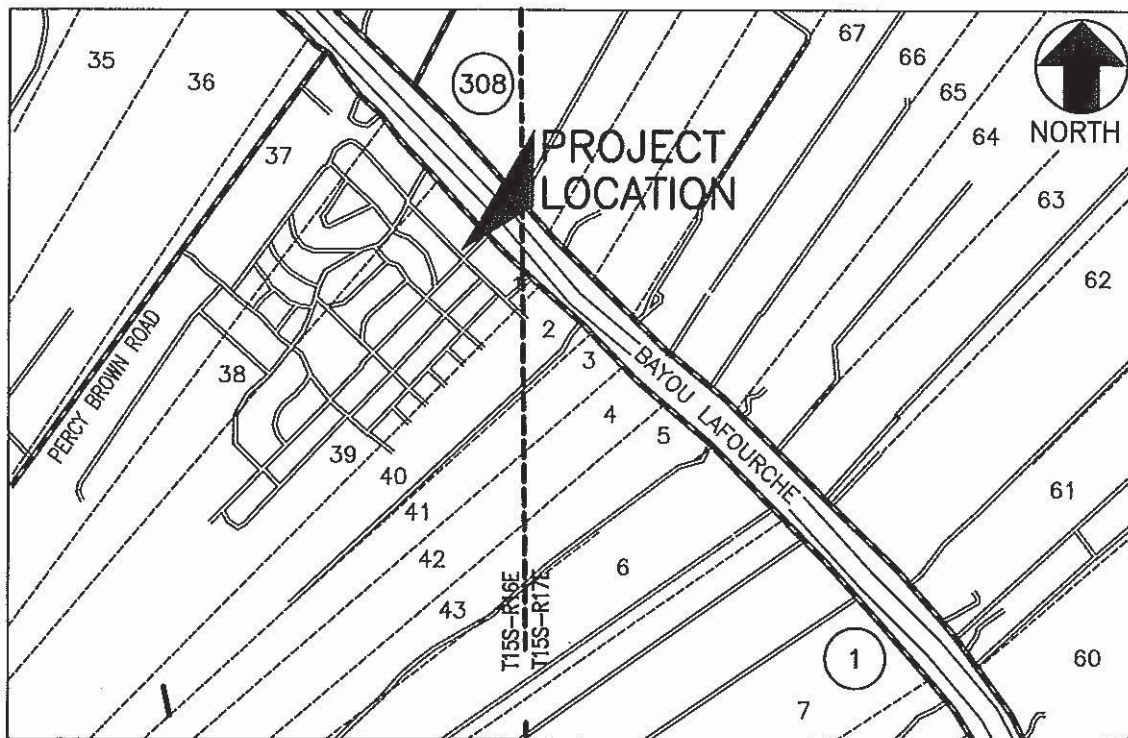
*Civil Engineers & Professional Land Surveyors*  
1107 Canal Blvd., Thibodaux, Louisiana 70301 (985) 447-4017  
EMAIL: [dwaitz@waitzengineering.com](mailto:dwaitz@waitzengineering.com)

### ***STATE VICINITY MAP***

DUGAS CANAL DRAINAGE INFRASTRUCTURE  
IMPROVEMENTS PROJECT  
IN SECTION 39, T15S-R16E, & SECTIONS  
4 & 10, T15S-R17E  
LAFOURCHE PARISH, LOUISIANA

DATE: JULY 20, 2017

APPLICATION BY: **LAFOURCHE PARISH GOVERNMENT**



## VICINITY MAP

SCALE 1" = 2000'

PREPARED BY:

**DAVID A. WAITZ**  
ENGINEERING AND SURVEYING, INC.

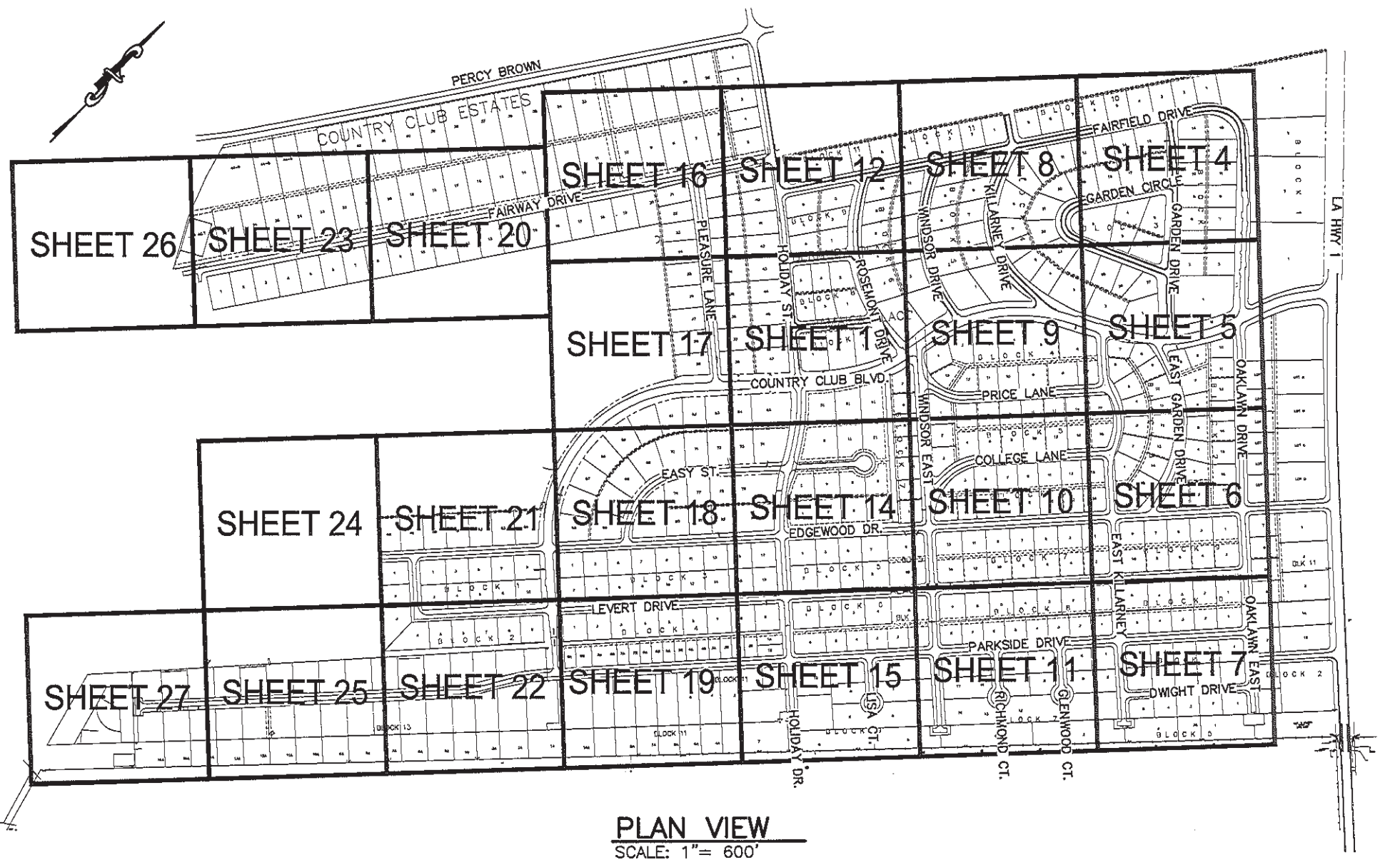
Civil Engineers & Professional Land Surveyors  
1107 Canal Blvd., Thibodaux, Louisiana 70301 (985) 447-4017  
EMAIL: [dwaitz@waitzengineering.com](mailto:dwaitz@waitzengineering.com)

DATE: JULY 20, 2017

APPLICATION BY: **LAFOURCHE PARISH GOVERNMENT**

### LOCAL VICINITY MAP

DUGAS CANAL DRAINAGE INFRASTRUCTURE  
IMPROVEMENTS PROJECT  
IN SECTION 39, T15S-R16E, & SECTIONS  
4 & 10, T15S-R17E  
LAFOURCHE PARISH, LOUISIANA



PREPARED BY:

**DAVID A. WAITZ**  
**ENGINEERING AND SURVEYING, INC.**

Civil Engineers & Professional Land Surveyors  
1107 Canal Blvd., Thibodaux, Louisiana 70301 (985) 447-4017  
EMAIL: [dwaitz@waitzengineering.com](mailto:dwaitz@waitzengineering.com)

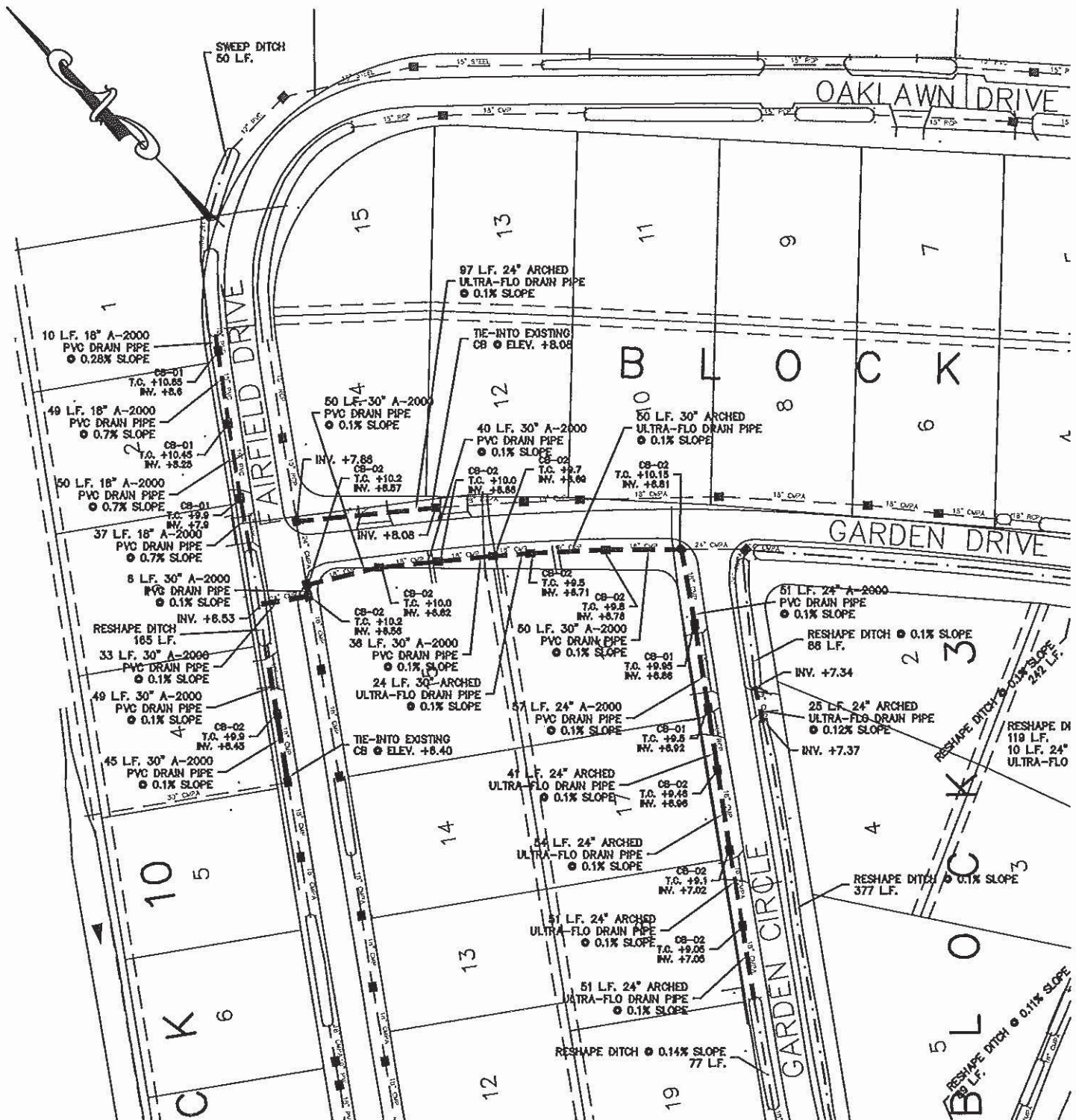
DATE: JULY 20, 2017

APPLICATION BY: **LAFORCHE PARISH GOVERNMENT**

**PERMIT DRAWINGS**

DUGAS CANAL DRAINAGE INFRASTRUCTURE  
IMPROVEMENTS PROJECT  
IN SECTION 39, T15S-R16E, & SECTIONS  
4 & 10, T15S-R17E  
LAFORCHE PARISH, LOUISIANA





SCALE: 1" = 60'

PREPARED BY:

**DAVID A. WAITZ**  
ENGINEERING AND SURVEYING, INC.

Civil Engineers & Professional Land Surveyors  
1107 Canal Blvd., Thibodaux, Louisiana 70301 (985) 447-4017  
EMAIL: [dwaitz@waitzengineering.com](mailto:dwaitz@waitzengineering.com)

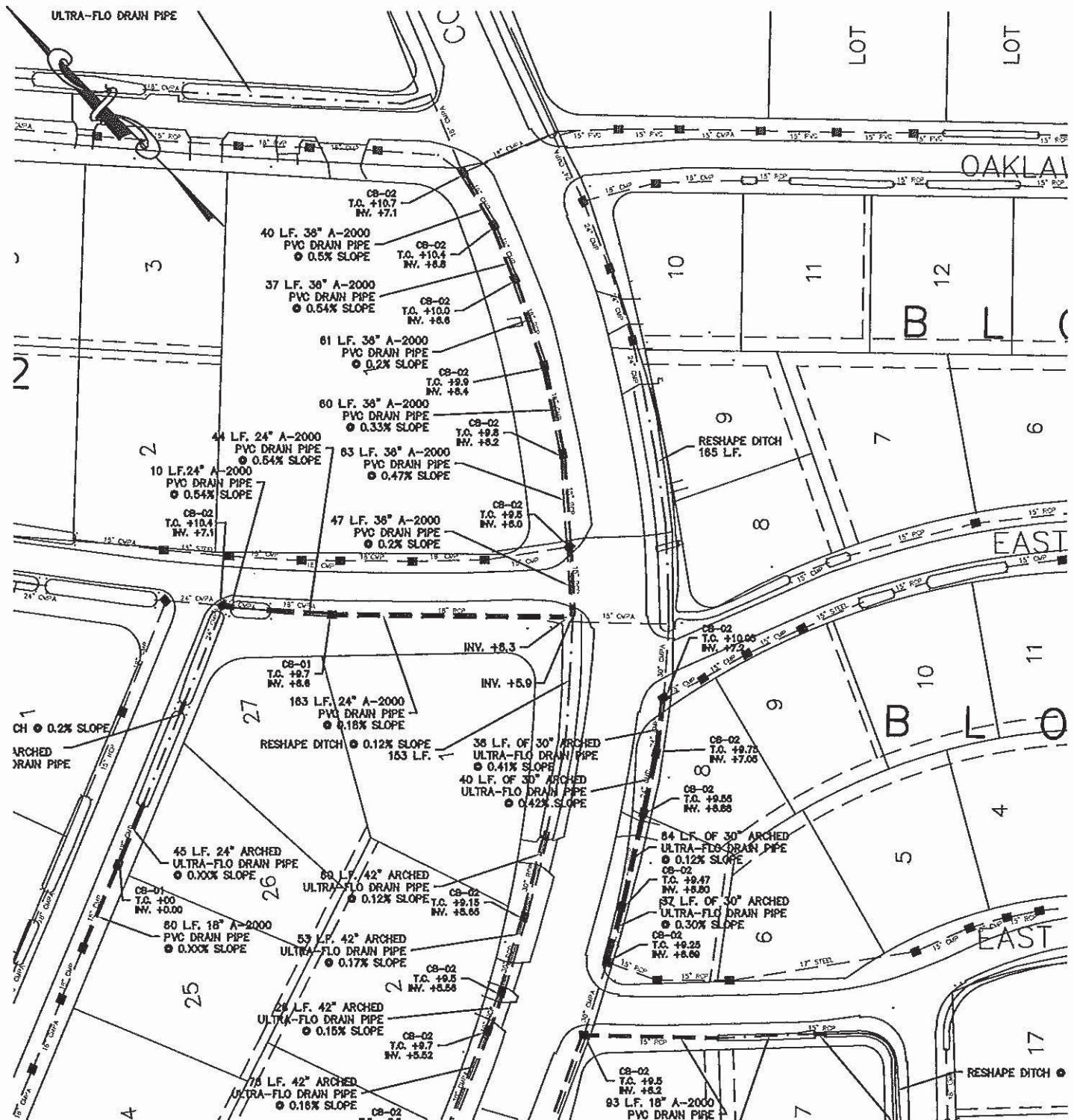
## PERMIT DRAWINGS

DUGAS CANAL DRAINAGE INFRASTRUCTURE  
IMPROVEMENTS PROJECT  
IN SECTION 39, T15S-R16E, & SECTIONS  
4 & 10, T15S-R17E  
LAFORCHE PARISH, LOUISIANA

DATE: JULY 20, 2017

APPLICATION BY: **LAFORCHE PARISH GOVERNMENT**





SCALE: 1" = 60'

PREPARED BY:

**DAVID A. WAITZ**  
ENGINEERING AND SURVEYING, INC.

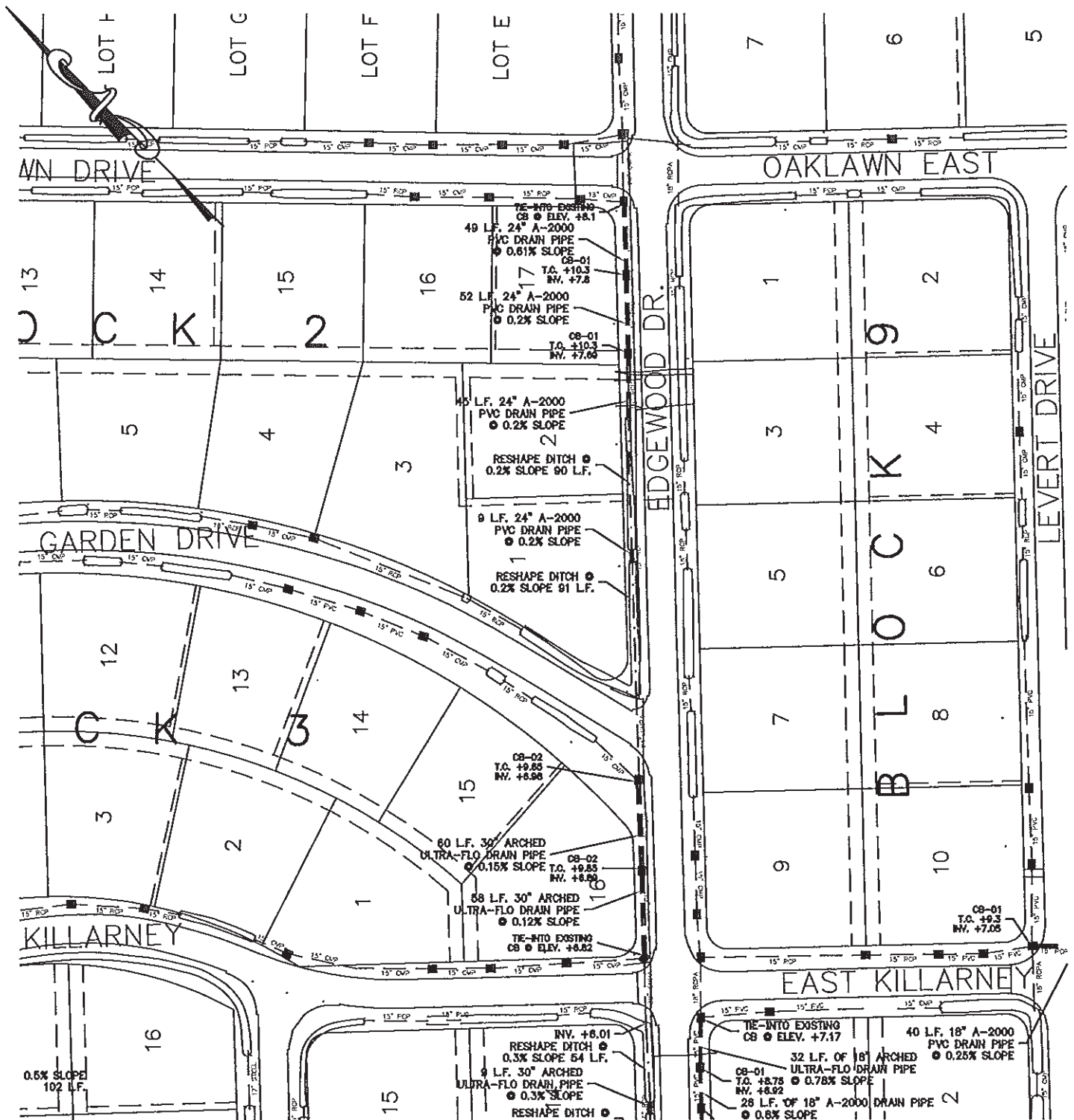
Civil Engineers & Professional Land Surveyors  
1107 Canal Blvd., Thibodaux, Louisiana 70301 (985) 447-4017  
EMAIL: [dwaitz@waitzengineering.com](mailto:dwaitz@waitzengineering.com)

## PERMIT DRAWINGS

DUGAS CANAL DRAINAGE INFRASTRUCTURE  
IMPROVEMENTS PROJECT  
IN SECTION 39, T15S-R16E, & SECTIONS  
4 & 10, T15S-R17E  
LAFOURCHE PARISH, LOUISIANA

DATE: JULY 20, 2017

APPLICATION BY: **LAFOURCHE PARISH GOVERNMENT**



SCALE: 1" = 60'

PREPARED BY:

**DAVID A. WAITZ**  
ENGINEERING AND SURVEYING, INC.

Civil Engineers & Professional Land Surveyors  
1107 Canal Blvd., Thibodaux, Louisiana 70301 (985) 447-4017  
EMAIL: [dwaitz@waitzengineering.com](mailto:dwaitz@waitzengineering.com)

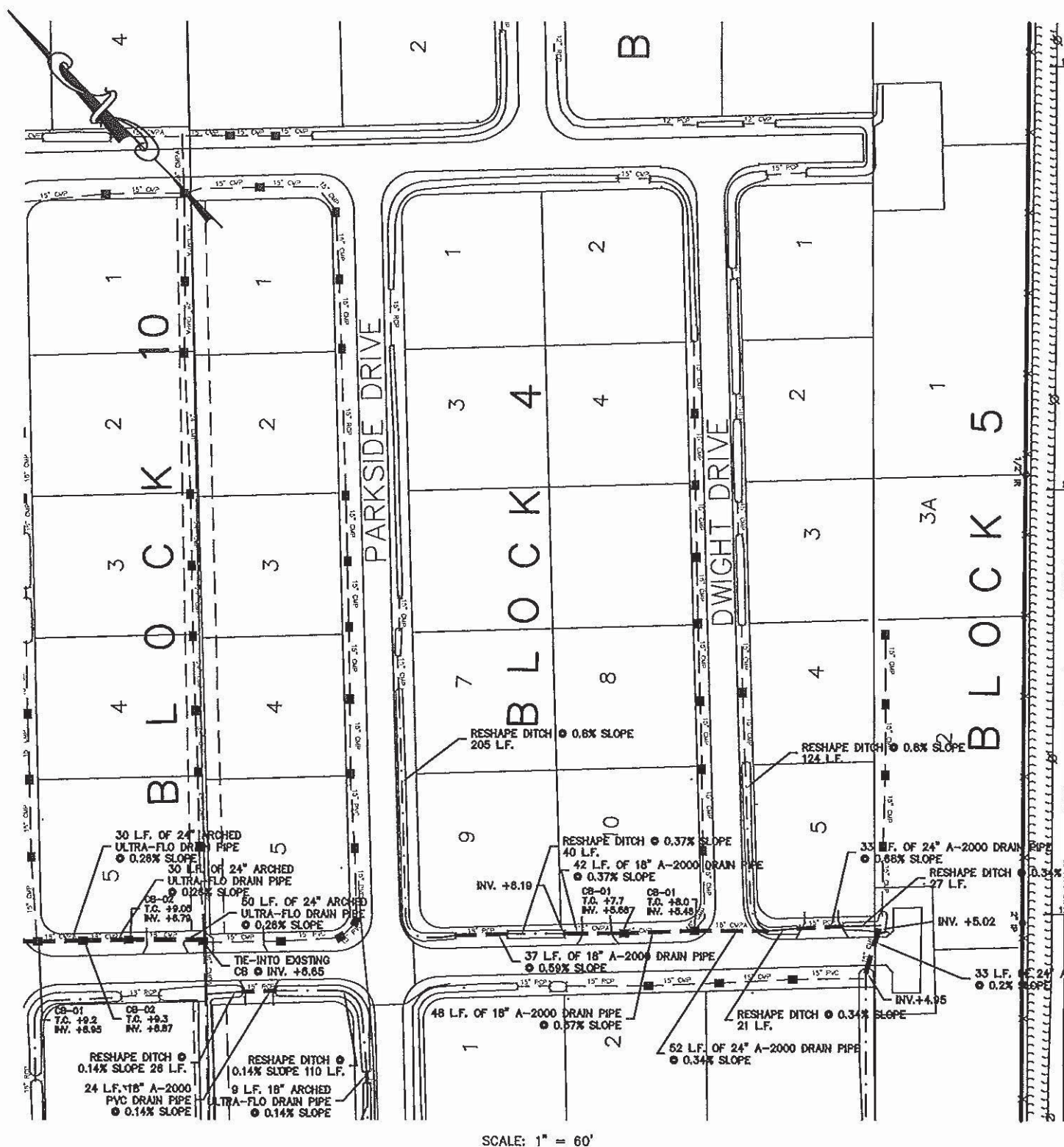
## PERMIT DRAWINGS

DUGAS CANAL DRAINAGE INFRASTRUCTURE  
IMPROVEMENTS PROJECT  
IN SECTION 39, T15S-R16E, & SECTIONS  
4 & 10, T15S-R17E  
LAFORCHE PARISH, LOUISIANA

DATE: JULY 20, 2017

APPLICATION BY: **LAFORCHE PARISH GOVERNMENT**





PREPARED BY:

**DAVID A. WAITZ**  
ENGINEERING AND SURVEYING, INC.

**Civil Engineers & Professional Land Surveyors**  
1107 Canal Blvd., Thibodaux, Louisiana 70301 (985) 447-4017  
EMAIL: [dwaitz@waitzengineering.com](mailto:dwaitz@waitzengineering.com)

DATE: JULY 20, 2017

APPLICATION BY: **LAFOURCHE PARISH GOVERNMENT**

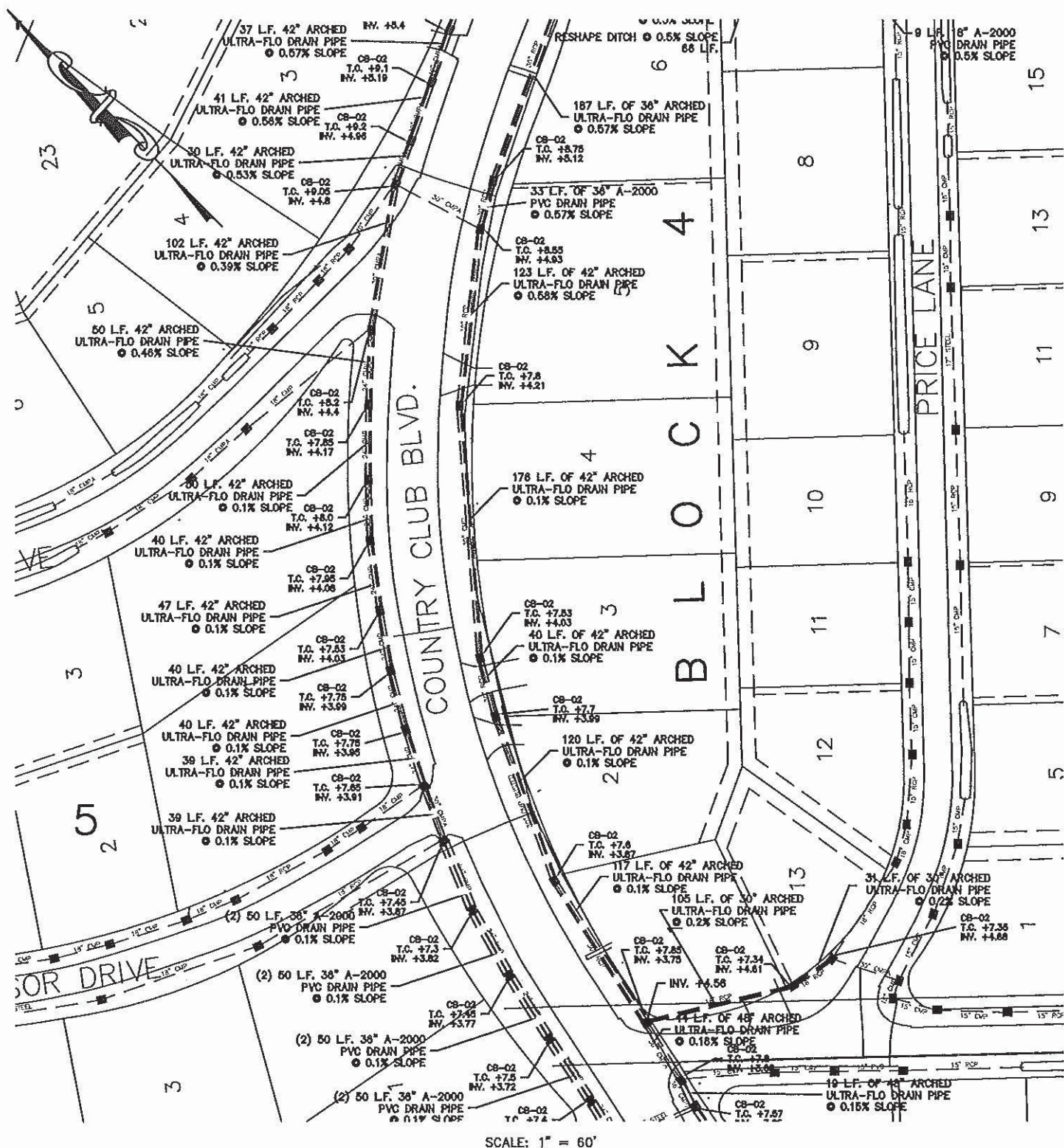
## PERMIT DRAWINGS

DUGAS CANAL DRAINAGE INFRASTRUCTURE  
IMPROVEMENTS PROJECT  
IN SECTION 39, T15S-R16E, & SECTIONS  
4 & 10, T15S-R17E  
LAFOURCHE PARISH, LOUISIANA









SCALE: 1" = 60'

PREPARED BY:

**DAVID A. WAITZ**  
ENGINEERING AND SURVEYING, INC.

Civil Engineers & Professional Land Surveyors  
1107 Canal Blvd., Thibodaux, Louisiana 70301 (985) 447-4017  
EMAIL: [dwaitz@waitzengineering.com](mailto:dwaitz@waitzengineering.com)

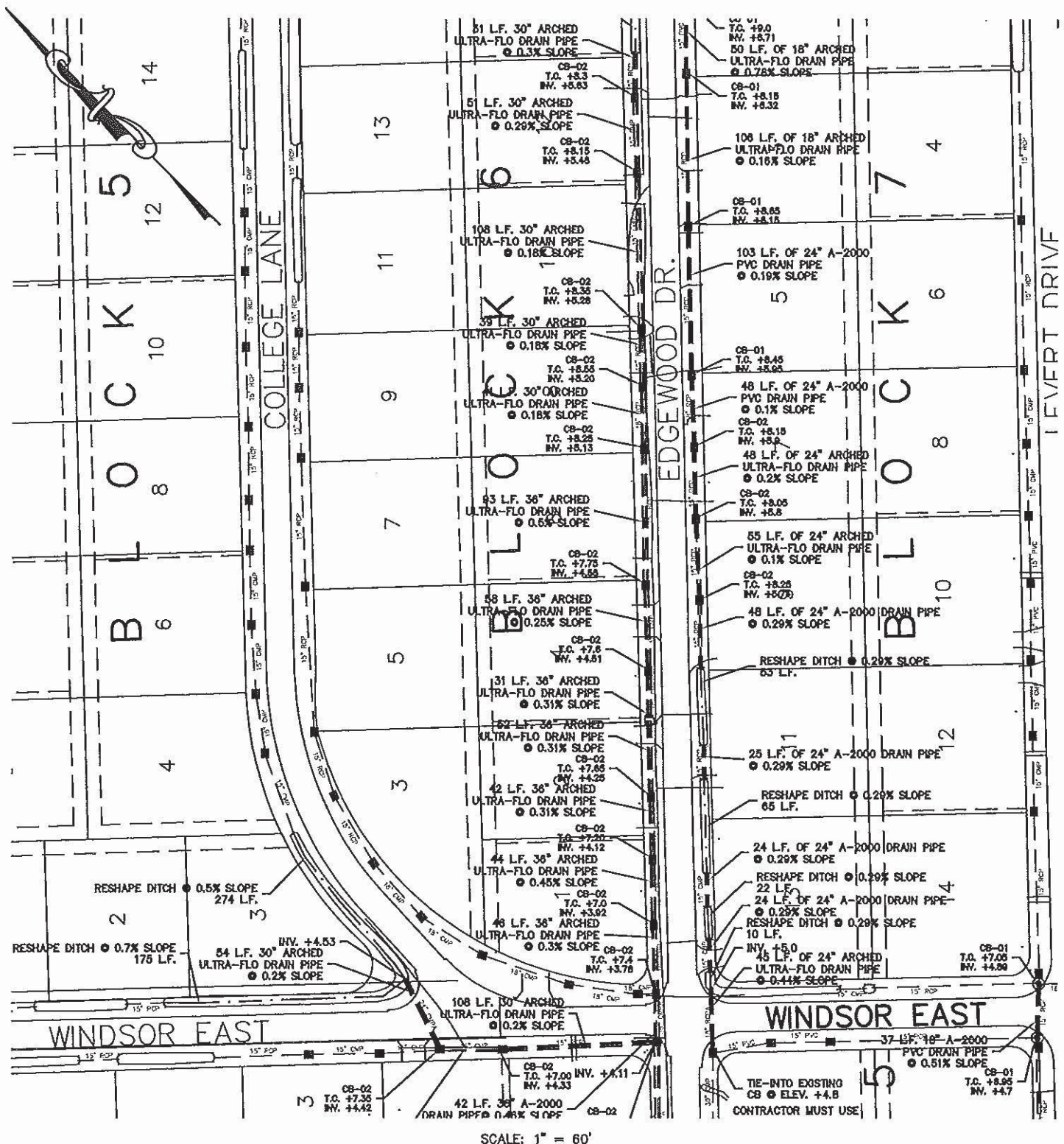
DATE: JULY 20, 2017

APPLICATION BY: **LAFORCHE PARISH GOVERNMENT**

## PERMIT DRAWINGS

DUGAS CANAL DRAINAGE INFRASTRUCTURE  
IMPROVEMENTS PROJECT  
IN SECTION 39, T15S-R16E, & SECTIONS  
4 & 10, T15S-R17E  
LAFORCHE PARISH, LOUISIANA





PREPARED BY:

**DAVID A. WAITZ**  
ENGINEERING AND SURVEYING, INC.

Civil Engineers & Professional Land Surveyors  
1107 Canal Blvd., Thibodaux, Louisiana 70301 (985) 447-4017  
EMAIL: [dwaitz@waitzengineering.com](mailto:dwaitz@waitzengineering.com)

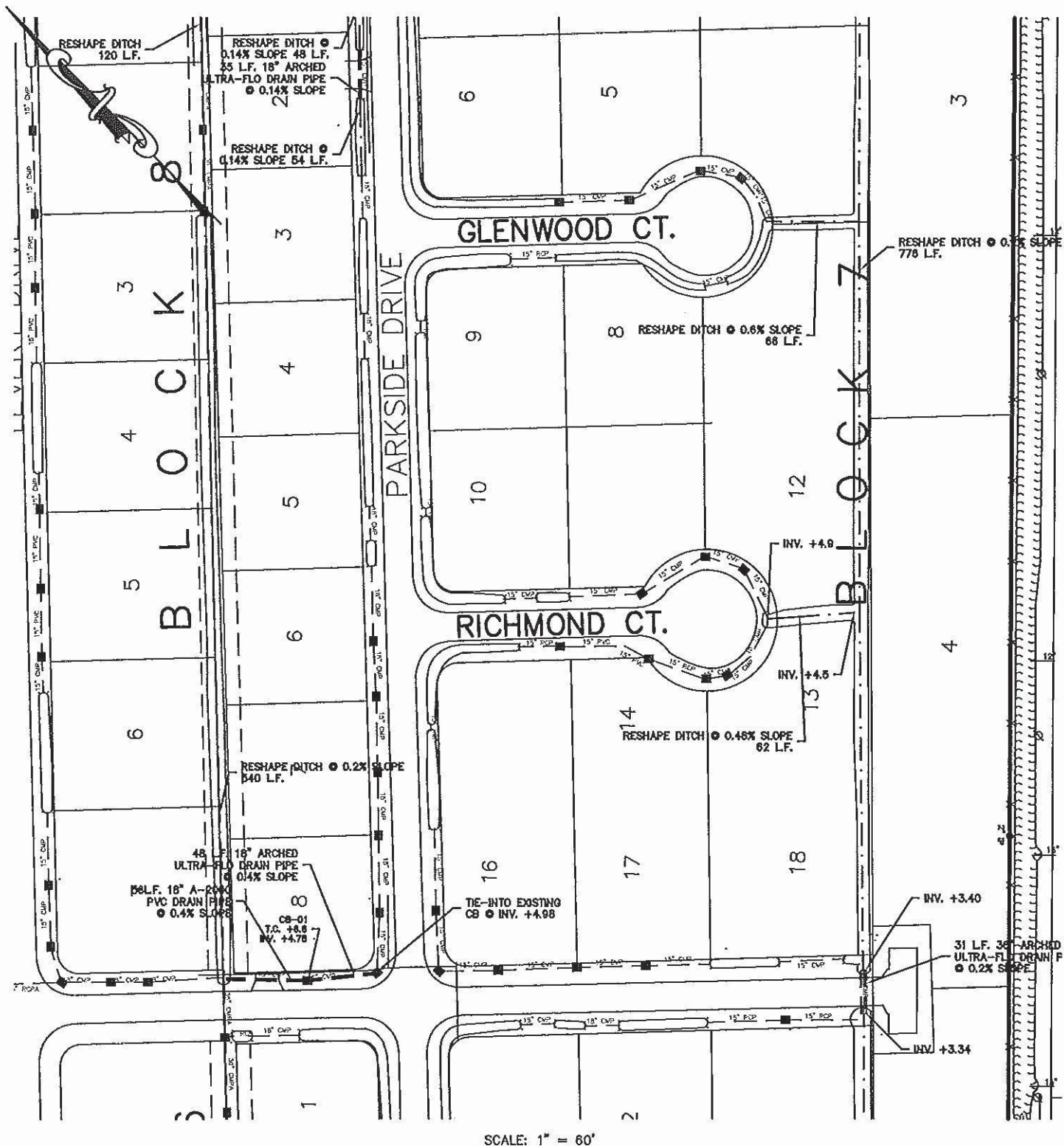
DATE: JULY 20, 2017

APPLICATION BY: **LAFORCHE PARISH GOVERNMENT**

## PERMIT DRAWINGS

DUGAS CANAL DRAINAGE INFRASTRUCTURE  
IMPROVEMENTS PROJECT  
IN SECTION 39, T15S-R16E, & SECTIONS  
4 & 10, T15S-R17E  
LAFORCHE PARISH, LOUISIANA





SCALE: 1" = 60'

PREPARED BY:

**DAVID A. WAITZ**  
ENGINEERING AND SURVEYING, INC.

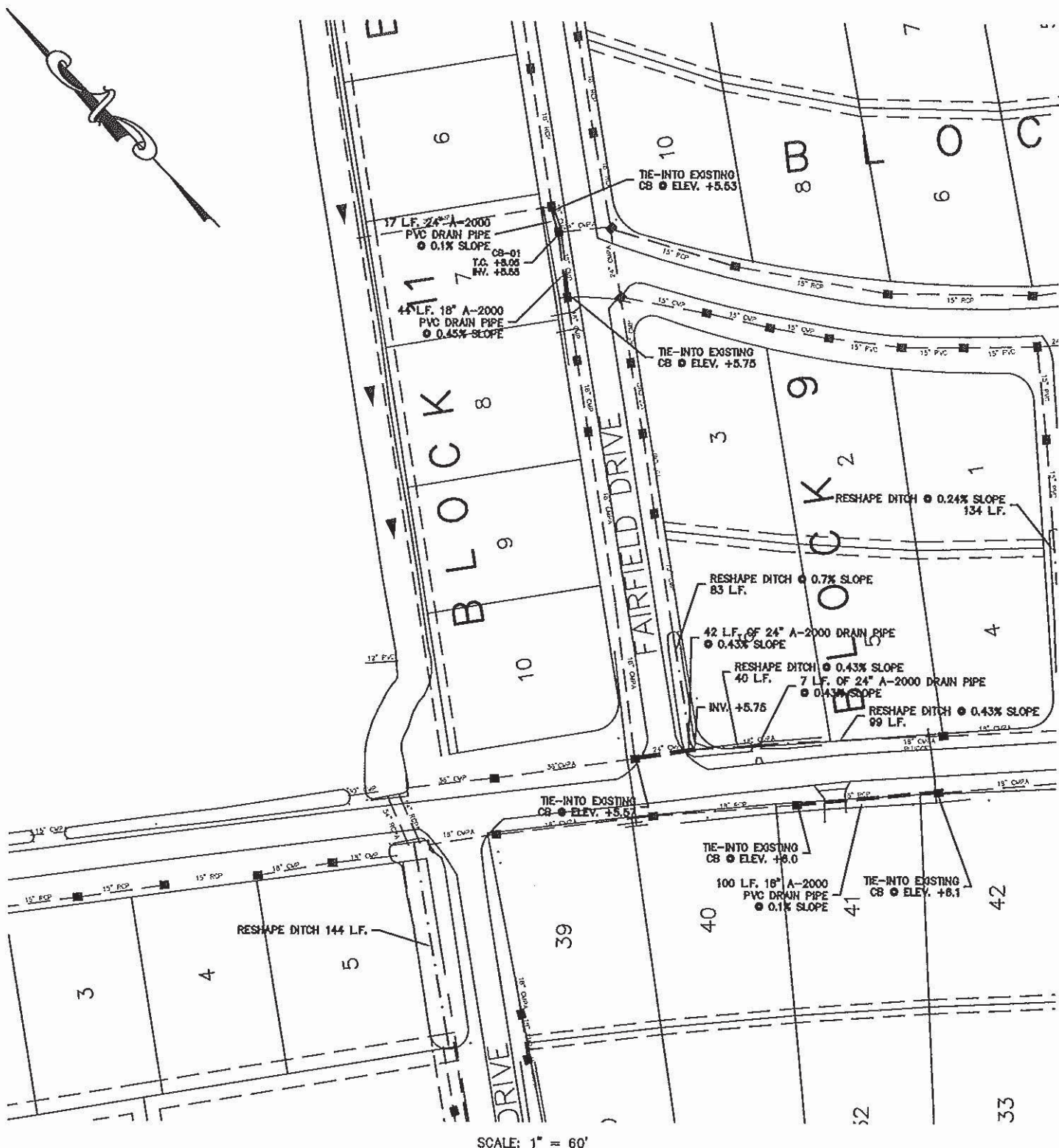
Civil Engineers & Professional Land Surveyors  
1107 Canal Blvd., Thibodaux, Louisiana 70301 (985) 447-4017  
EMAIL: [dwaitz@waitzengineering.com](mailto:dwaitz@waitzengineering.com)

DATE: JULY 20, 2017

APPLICATION BY: **LAFORCHE PARISH GOVERNMENT**

## PERMIT DRAWINGS

DUGAS CANAL DRAINAGE INFRASTRUCTURE  
IMPROVEMENTS PROJECT  
IN SECTION 39, T15S-R16E, & SECTIONS  
4 & 10, T15S-R17E  
LAFORCHE PARISH, LOUISIANA



PREPARED BY:

**DAVID A. WAITZ**  
ENGINEERING AND SURVEYING, INC.

Civil Engineers & Professional Land Surveyors  
1107 Canal Blvd., Thibodaux, Louisiana 70301 (985) 447-4017  
EMAIL: [dwaitz@waitzengineering.com](mailto:dwaitz@waitzengineering.com)

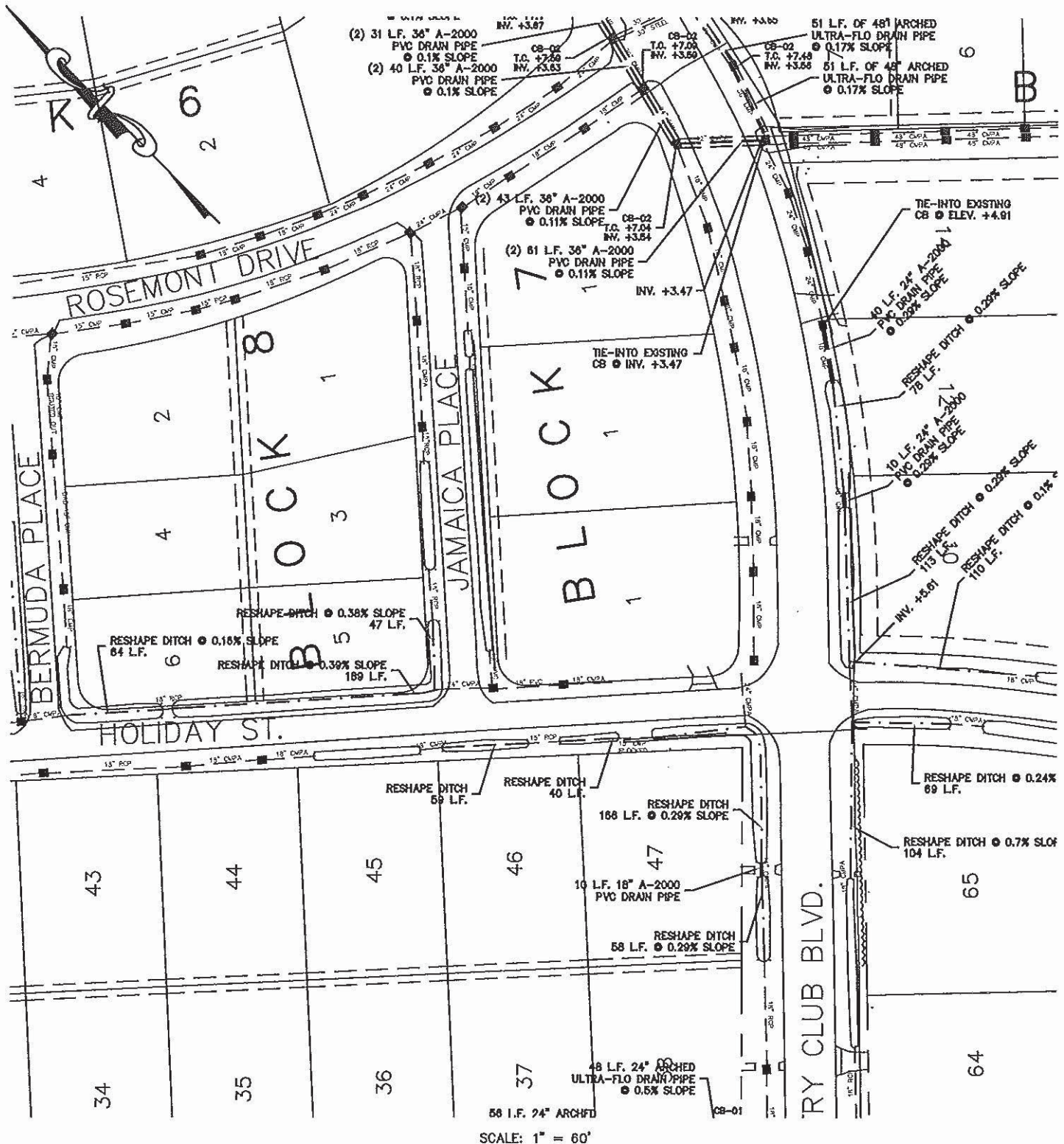
DATE: JULY 20, 2017

APPLICATION BY: **LAFORCHE PARISH GOVERNMENT**

### PERMIT DRAWINGS

DUGAS CANAL DRAINAGE INFRASTRUCTURE  
IMPROVEMENTS PROJECT  
IN SECTION 39, T15S-R16E, & SECTIONS  
4 & 10, T15S-R17E  
LAFORCHE PARISH, LOUISIANA





PREPARED BY:

**DAVID A. WAITZ**  
ENGINEERING AND SURVEYING, INC.

Civil Engineers & Professional Land Surveyors  
1107 Canal Blvd., Thibodaux, Louisiana 70301 (985) 447-4017  
EMAIL: [dwaitz@waitzengineering.com](mailto:dwaitz@waitzengineering.com)

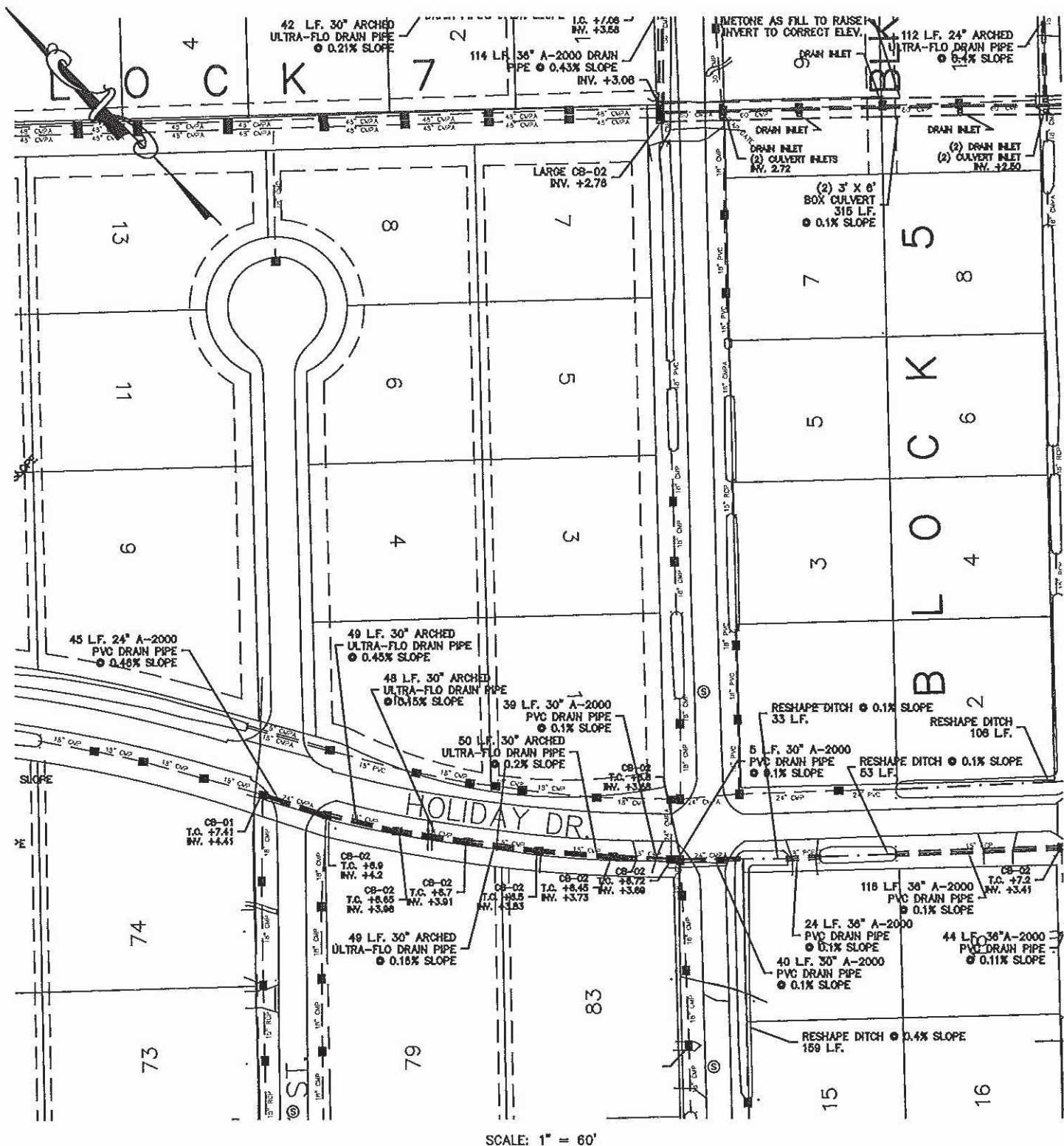
DATE: JULY 20, 2017

APPLICATION BY: **LAFORCHE PARISH GOVERNMENT**

## PERMIT DRAWINGS

DUGAS CANAL DRAINAGE INFRASTRUCTURE  
IMPROVEMENTS PROJECT  
IN SECTION 39, T15S-R16E, & SECTIONS  
4 & 10, T15S-R17E  
LAFORCHE PARISH, LOUISIANA





SCALE: 1" = 60'

PREPARED BY:

**DAVID A. WAITZ**  
ENGINEERING AND SURVEYING, INC.

Civil Engineers & Professional Land Surveyors  
1107 Canal Blvd., Thibodaux, Louisiana 70301 (985) 447-4017  
EMAIL: [dwaitz@waitzengineering.com](mailto:dwaitz@waitzengineering.com)

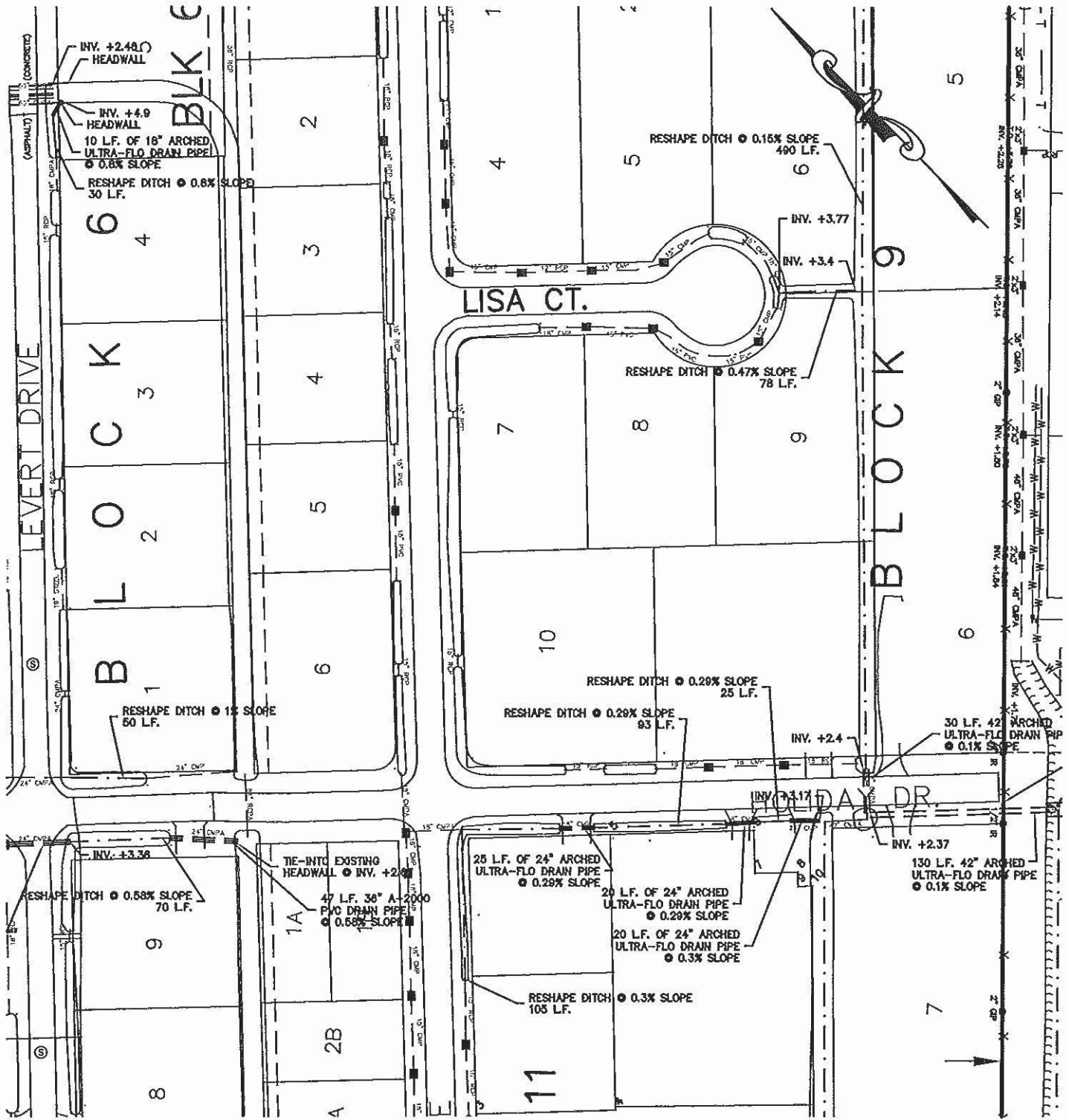
DATE: JULY 20, 2017

APPLICATION BY: **LAFORCHE PARISH GOVERNMENT**

## PERMIT DRAWINGS

DUGAS CANAL DRAINAGE INFRASTRUCTURE  
IMPROVEMENTS PROJECT  
IN SECTION 39, T15S-R16E, & SECTIONS  
4 & 10, T15S-R17E  
LAFORCHE PARISH, LOUISIANA





SCALE: 1" = 60'

PREPARED BY:

**DAVID A. WAITZ**  
ENGINEERING AND SURVEYING, INC.

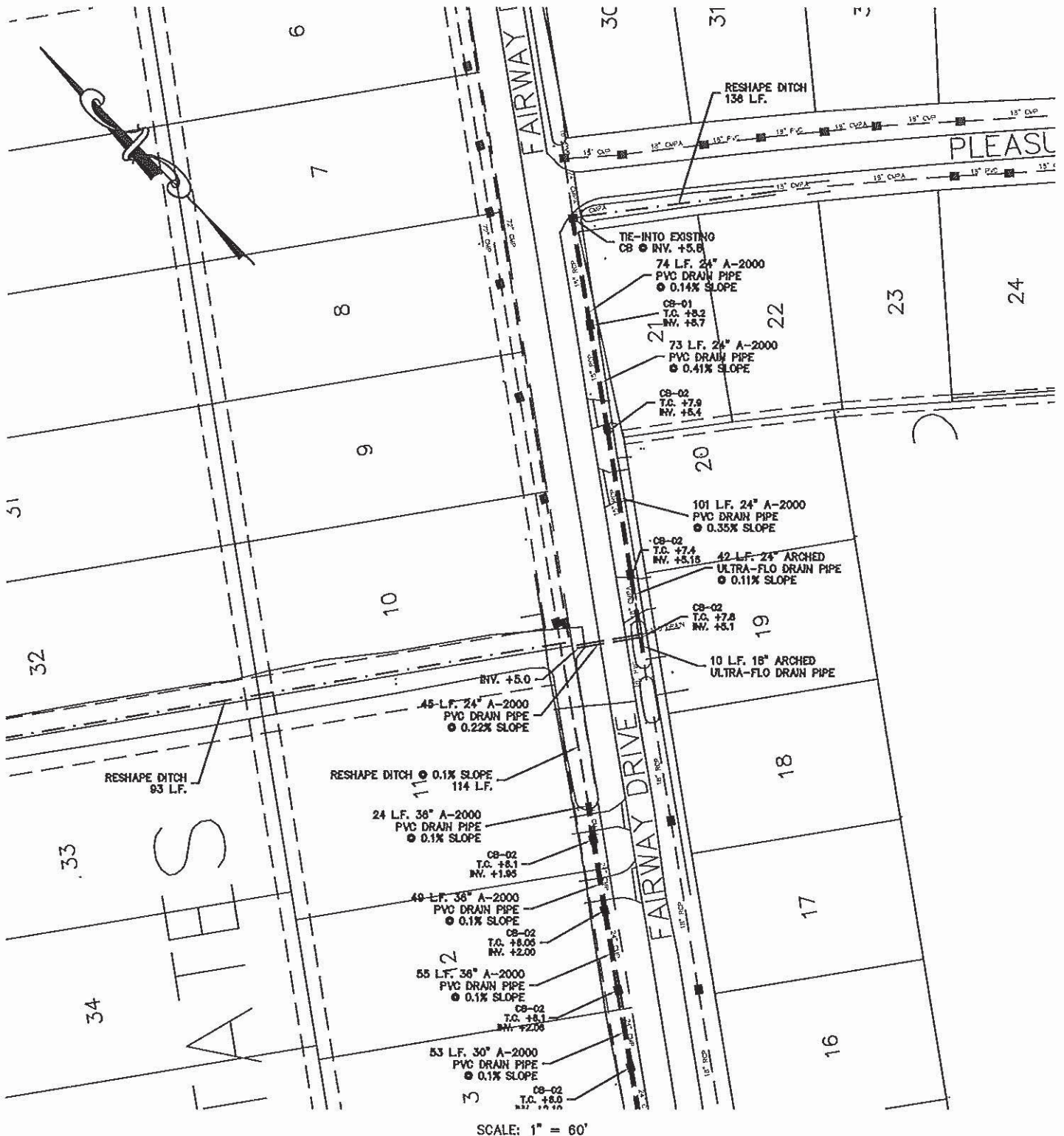
Civil Engineers & Professional Land Surveyors  
1107 Canal Blvd., Thibodaux, Louisiana 70301 (985) 447-4017  
EMAIL: [dwaitz@waitzengineering.com](mailto:dwaitz@waitzengineering.com)

## PERMIT DRAWINGS

DUGAS CANAL DRAINAGE INFRASTRUCTURE  
IMPROVEMENTS PROJECT  
IN SECTION 39, T15S-R16E, & SECTIONS  
4 & 10, T15S-R17E  
LAFOURCHE PARISH, LOUISIANA

DATE: JULY 20, 2017

APPLICATION BY: **LAFOURCHE PARISH GOVERNMENT**



SCALE: 1" = 60'

PREPARED BY:

**DAVID A. WAITZ**  
ENGINEERING AND SURVEYING, INC.

Civil Engineers & Professional Land Surveyors  
1107 Canal Blvd., Thibodaux, Louisiana 70301 (985) 447-4017  
EMAIL: [dwaitz@waitzengineering.com](mailto:dwaitz@waitzengineering.com)

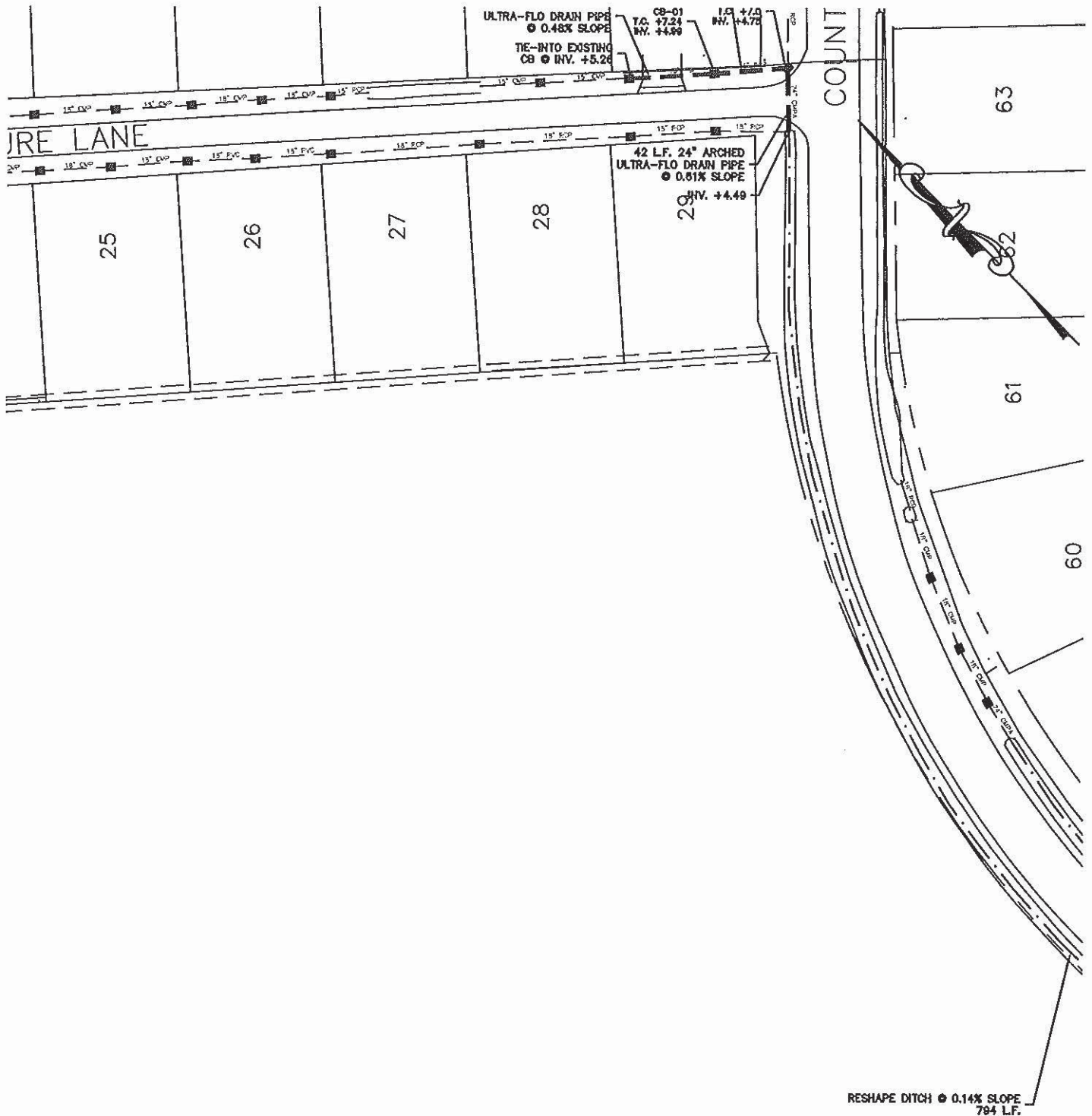
## PERMIT DRAWINGS

DUGAS CANAL DRAINAGE INFRASTRUCTURE  
IMPROVEMENTS PROJECT  
IN SECTION 39, T15S-R16E, & SECTIONS  
4 & 10, T15S-R17E  
LAFOURCHE PARISH, LOUISIANA

DATE: JULY 20, 2017

APPLICATION BY: **LAFOURCHE PARISH GOVERNMENT**





SCALE: 1" = 60'

PREPARED BY:

**DAVID A. WAITZ**  
ENGINEERING AND SURVEYING, INC.

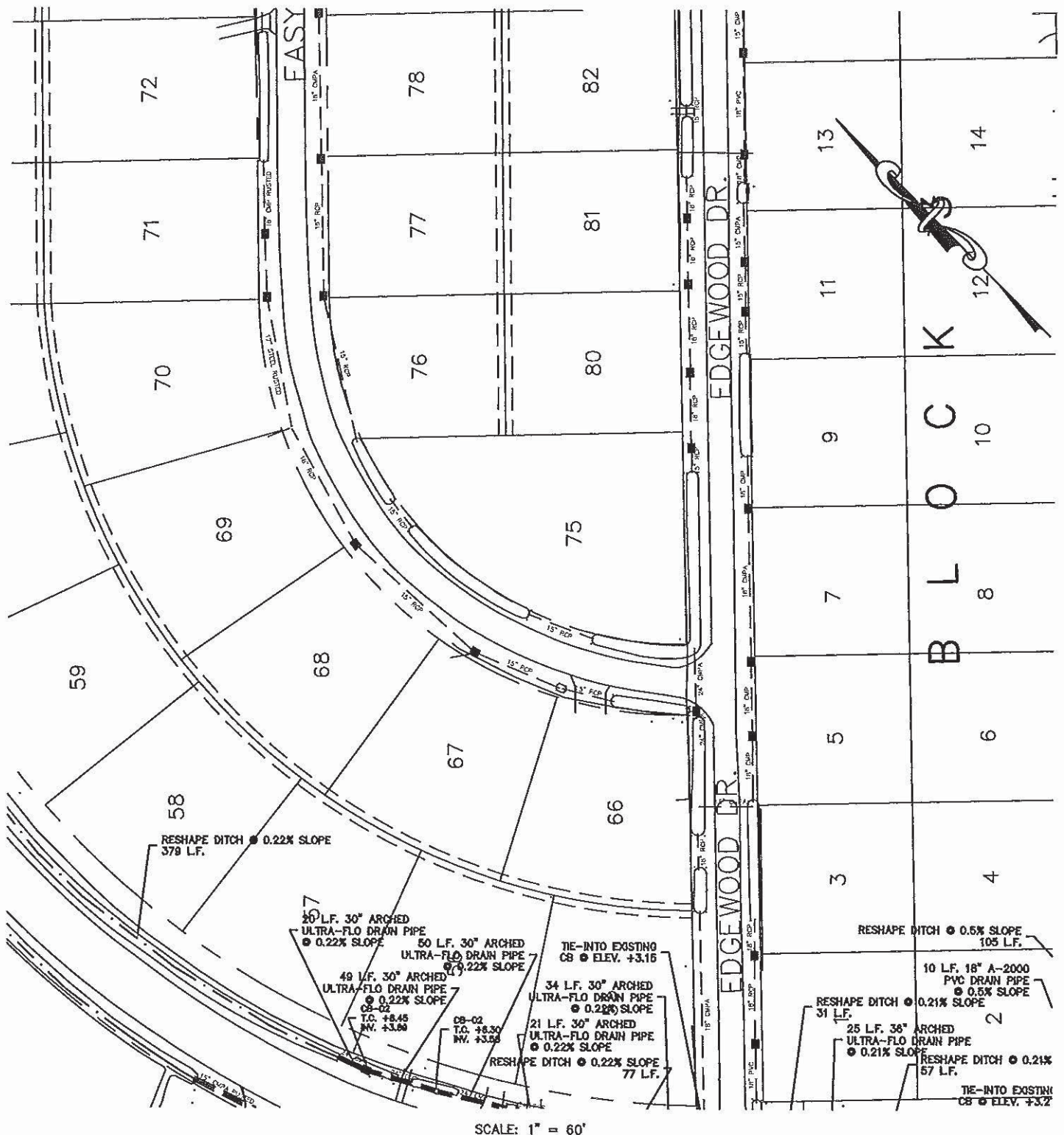
Civil Engineers & Professional Land Surveyors  
1107 Canal Blvd., Thibodaux, Louisiana 70301 (985) 447-4017  
EMAIL: [dwaitz@waitzengineering.com](mailto:dwaitz@waitzengineering.com)

DATE: JULY 20, 2017

APPLICATION BY: **LAFOURCHE PARISH GOVERNMENT**

**PERMIT DRAWINGS**

DUGAS CANAL DRAINAGE INFRASTRUCTURE  
IMPROVEMENTS PROJECT  
IN SECTION 39, T15S-R16E, & SECTIONS  
4 & 10, T15S-R17E  
LAFOURCHE PARISH, LOUISIANA



SCALE: 1" = 60'

PREPARED BY:

**DAVID A. WAITZ**

**ENGINEERING AND SURVEYING, INC.**

Civil Engineers & Professional Land Surveyors

1107 Canal Blvd., Thibodaux, Louisiana 70301 (985) 447-4017

EMAIL: [dwaitz@waitzengineering.com](mailto:dwaitz@waitzengineering.com)

DATE: JULY 20, 2017

APPLICATION BY: **LAFORCHE PARISH GOVERNMENT**

## PERMIT DRAWINGS

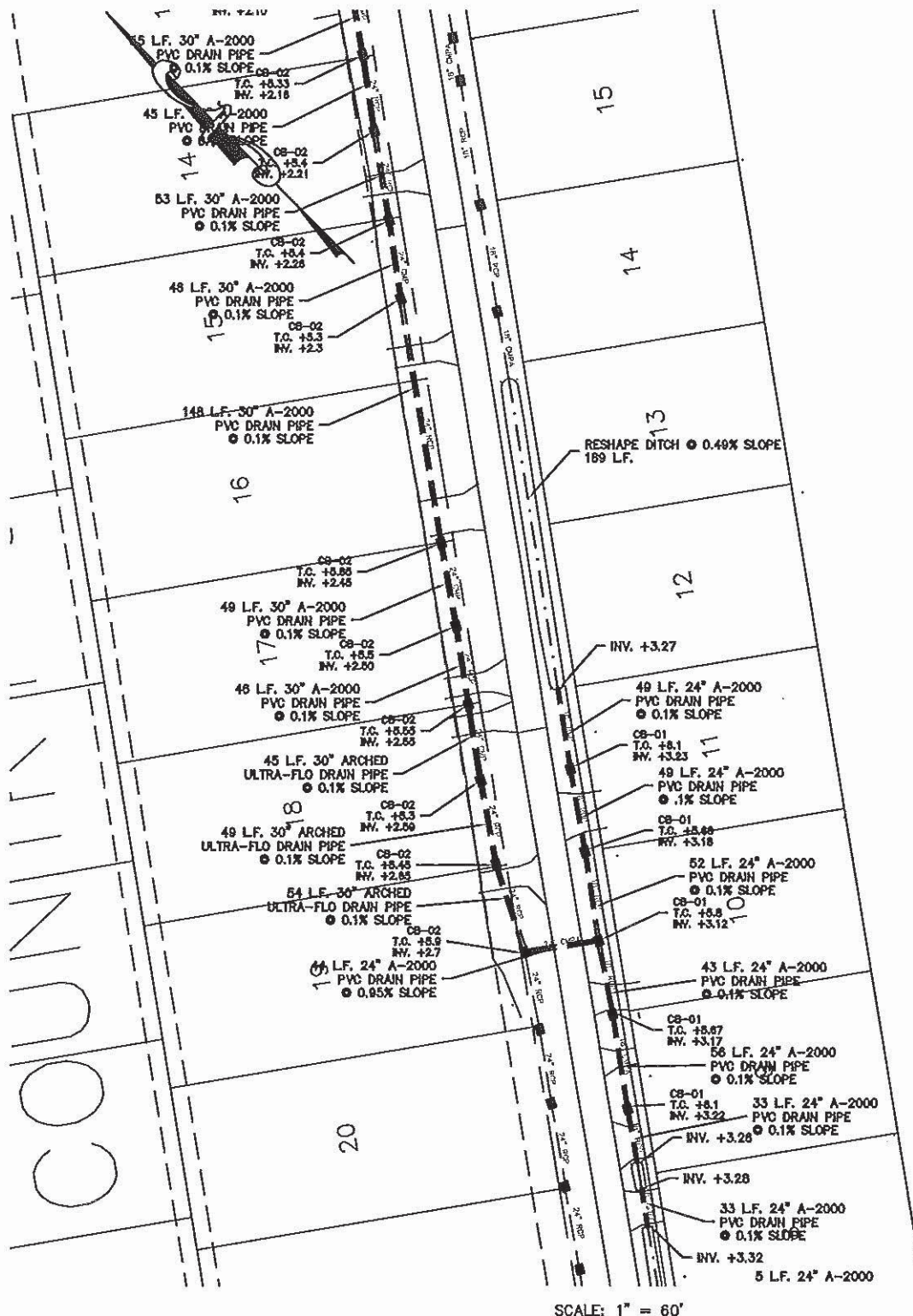
DUGAS CANAL DRAINAGE INFRASTRUCTURE  
IMPROVEMENTS PROJECT

IN SECTION 39, T15S-R16E, & SECTIONS  
4 & 10, T15S-R17E

LAFORCHE PARISH, LOUISIANA







SCALE: 1" = 60'

PREPARED BY:

**DAVID A. WAITZ**

ENGINEERING AND SURVEYING, INC.

Civil Engineers & Professional Land Surveyors

1107 Canal Blvd., Thibodaux, Louisiana 70301 (985) 447-4017

EMAIL: dwaitz@waitzengineering.com

DATE: JULY 20, 2017

APPLICATION BY: **LAFORCHE PARISH GOVERNMENT**

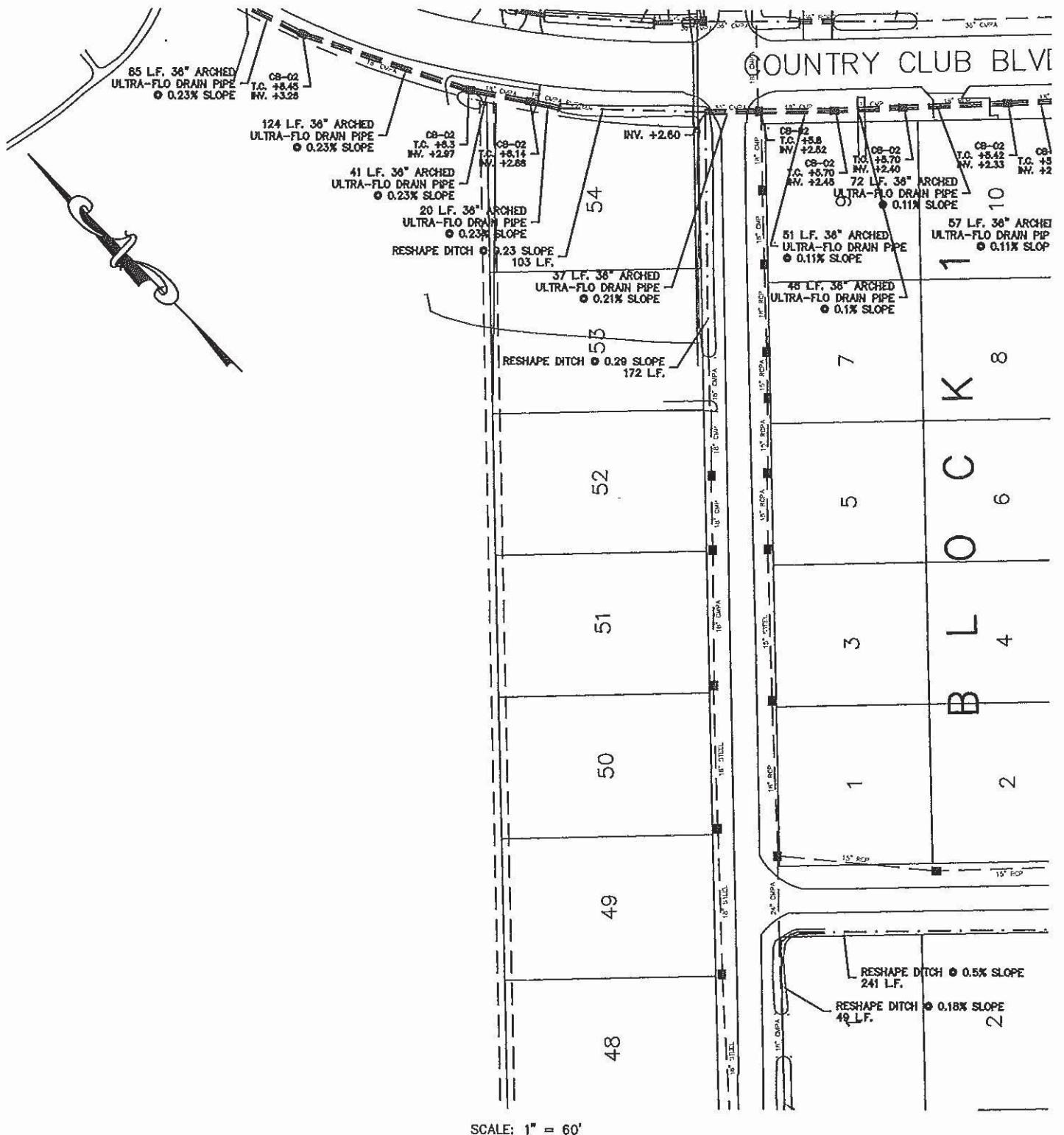
## PERMIT DRAWINGS

DUGAS CANAL DRAINAGE INFRASTRUCTURE  
IMPROVEMENTS PROJECT

IN SECTION 39, T15S-R16E, & SECTIONS  
4 & 10, T15S-R17E

LAFORCHE PARISH, LOUISIANA





SCALE: 1" = 60'

PREPARED BY:

**DAVID A. WAITZ**  
ENGINEERING AND SURVEYING, INC.

Civil Engineers & Professional Land Surveyors  
1107 Canal Blvd., Thibodaux, Louisiana 70301 (985) 447-4017  
EMAIL: [dwaitz@waitzengineering.com](mailto:dwaitz@waitzengineering.com)

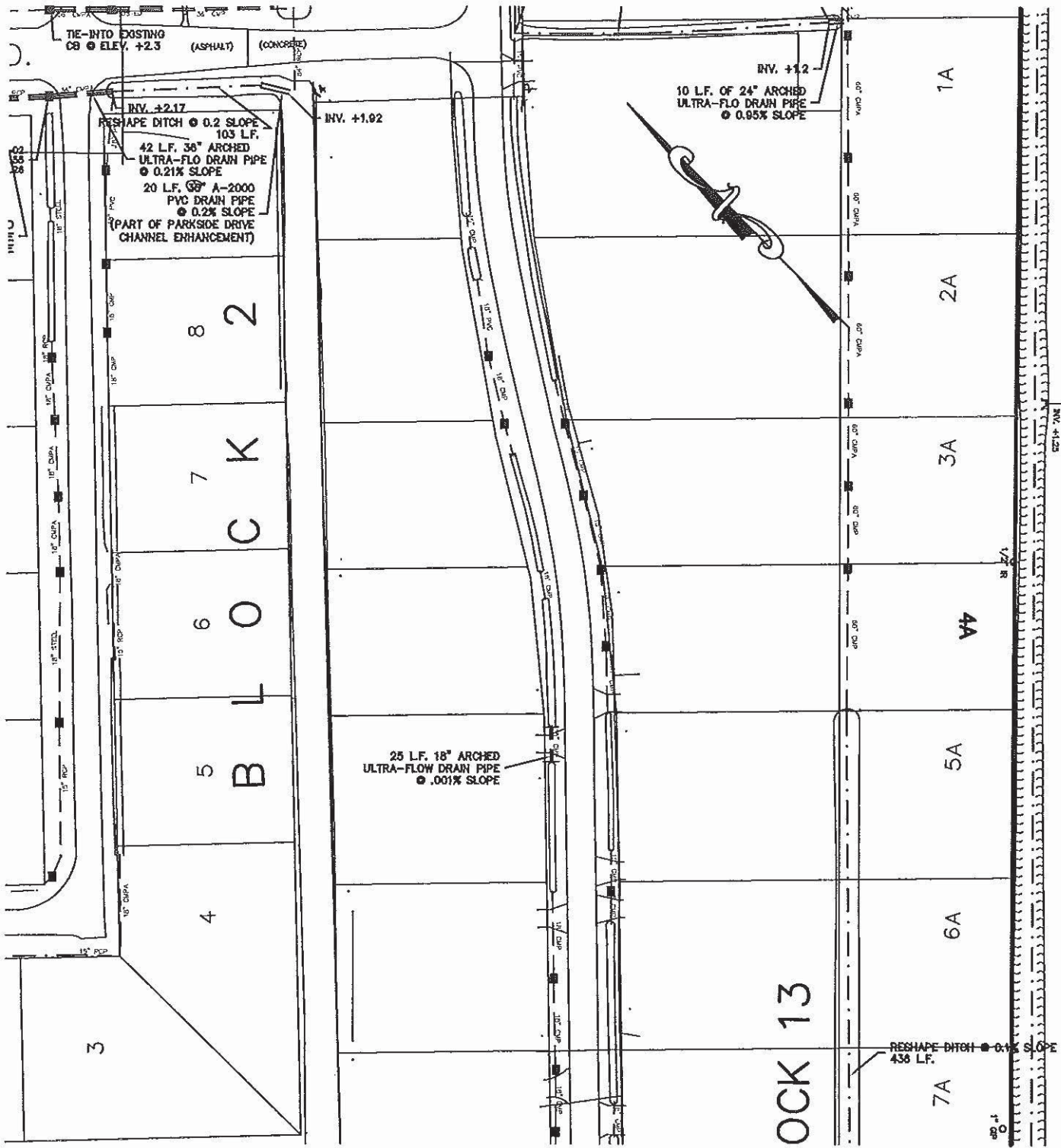
DATE: JULY 20, 2017

APPLICATION BY: **LAFORCHE PARISH GOVERNMENT**

### PERMIT DRAWINGS

DUGAS CANAL DRAINAGE INFRASTRUCTURE  
IMPROVEMENTS PROJECT  
IN SECTION 39, T15S-R16E, & SECTIONS  
4 & 10, T15S-R17E  
LAFORCHE PARISH, LOUISIANA





SCALE: 1" = 60'

PREPARED BY:

**DAVID A. WAITZ**  
ENGINEERING AND SURVEYING, INC.

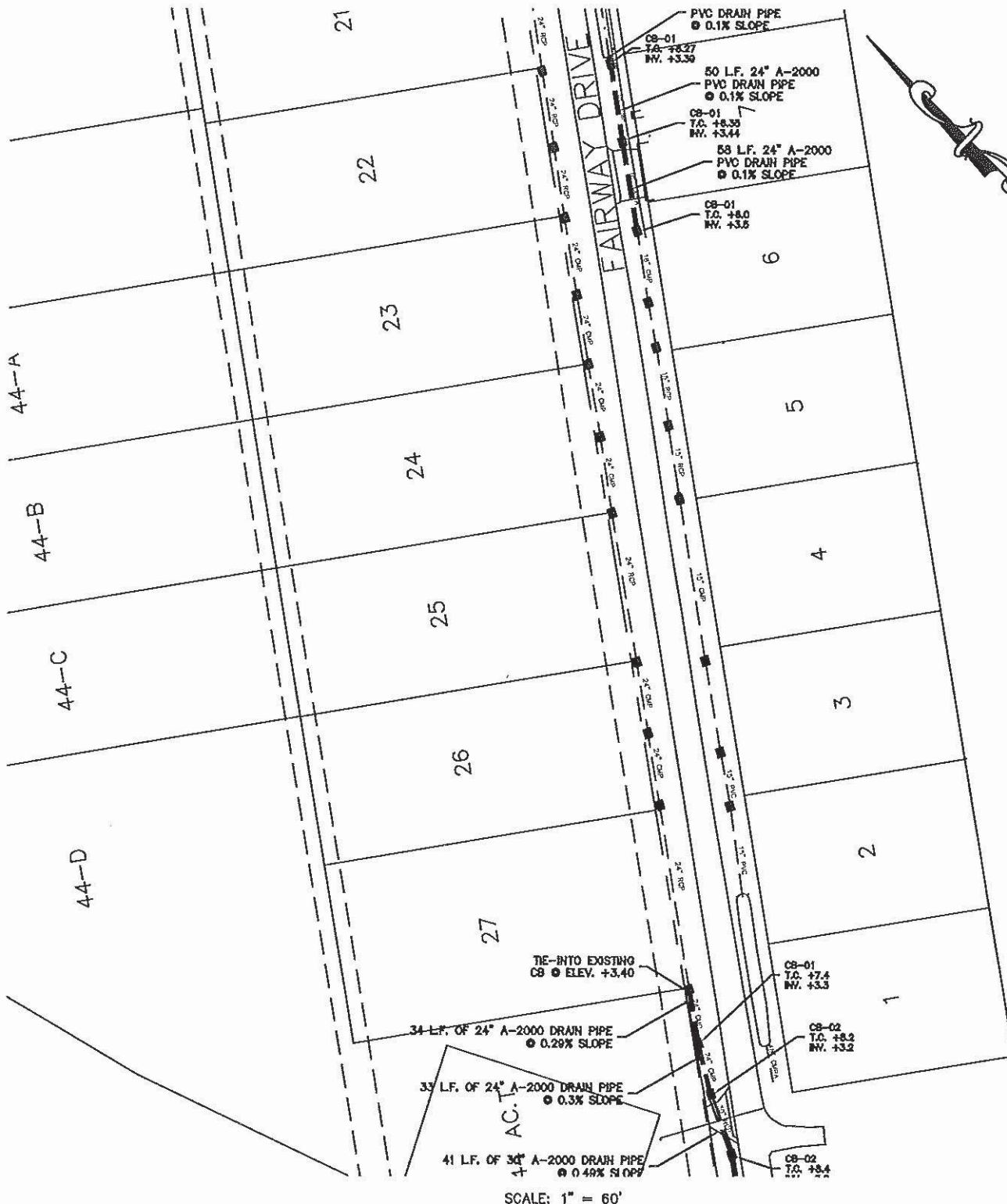
Civil Engineers & Professional Land Surveyors  
1107 Canal Blvd., Thibodaux, Louisiana 70301 (985) 447-4017  
EMAIL: [dwaitz@waitzengineering.com](mailto:dwaitz@waitzengineering.com)

DATE: JULY 20, 2017

APPLICATION BY: **LAFORCHE PARISH GOVERNMENT**

### PERMIT DRAWINGS

DUGAS CANAL DRAINAGE INFRASTRUCTURE  
IMPROVEMENTS PROJECT  
IN SECTION 39, T15S-R16E, & SECTIONS  
4 & 10, T15S-R17E  
LAFORCHE PARISH, LOUISIANA



PREPARED BY:

**DAVID A. WAITZ**  
ENGINEERING AND SURVEYING, INC.

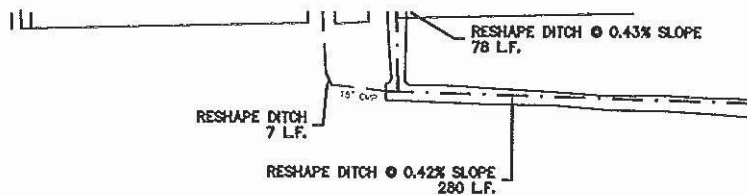
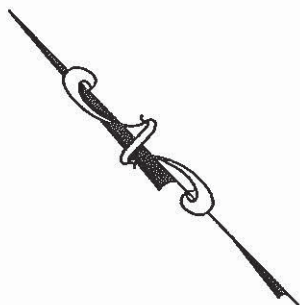
Civil Engineers & Professional Land Surveyors  
1107 Canal Blvd., Thibodaux, Louisiana 70301 (985) 447-4017  
EMAIL: dwaitz@waitzengineering.com

DATE: JULY 20, 2017

APPLICATION BY: **LAFORCHE PARISH GOVERNMENT**

## PERMIT DRAWINGS

DUGAS CANAL DRAINAGE INFRASTRUCTURE  
IMPROVEMENTS PROJECT  
IN SECTION 39, T15S-R16E, & SECTIONS  
4 & 10, T15S-R17E  
LAFORCHE PARISH, LOUISIANA



SCALE: 1" = 60'

PREPARED BY:

**DAVID A. WAITZ**  
ENGINEERING AND SURVEYING, INC.

Civil Engineers & Professional Land Surveyors  
1107 Canal Blvd., Thibodaux, Louisiana 70301 (985) 447-4017  
EMAIL: [dwaitz@waitzengineering.com](mailto:dwaitz@waitzengineering.com)

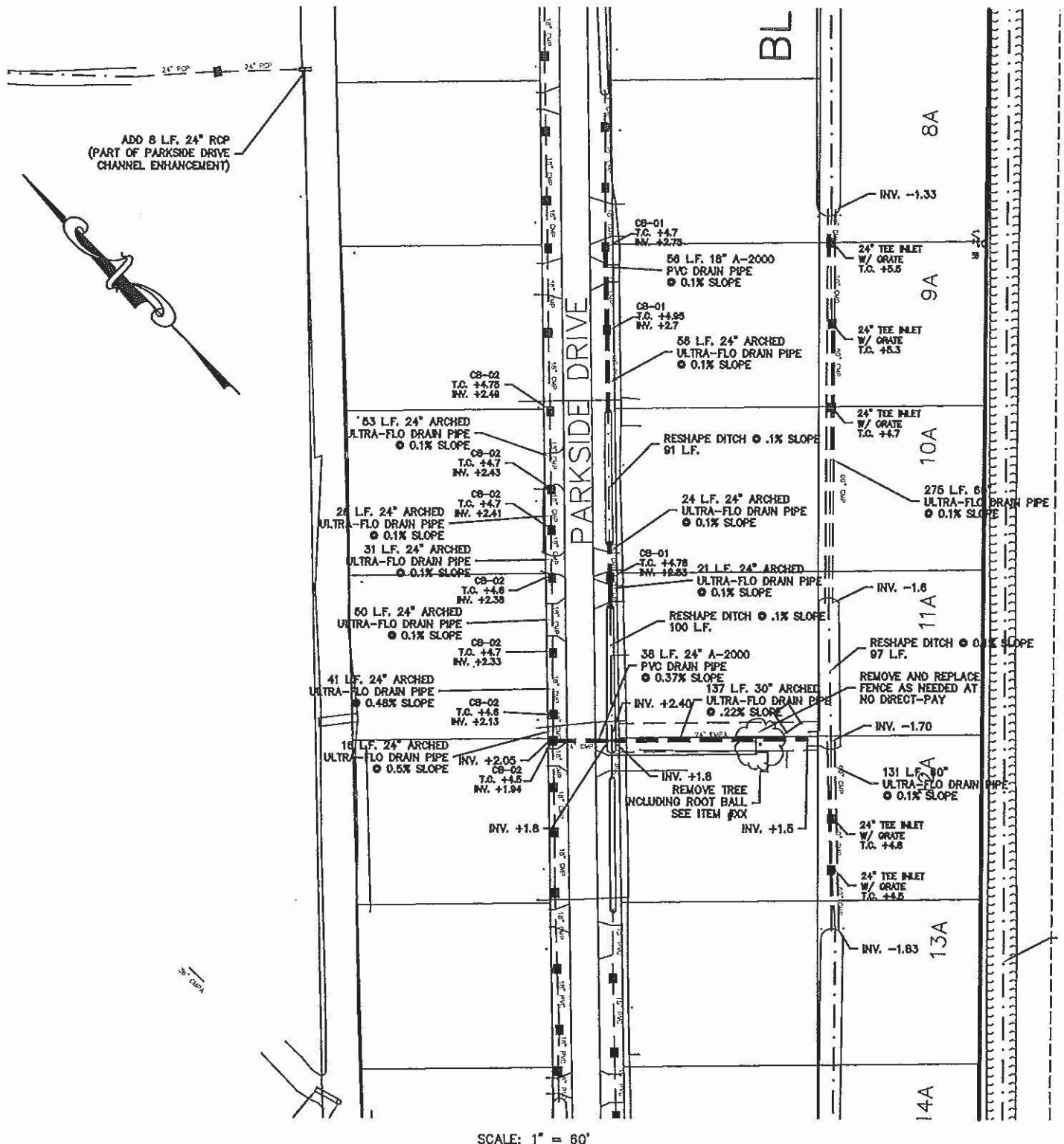
**PERMIT DRAWINGS**

DUGAS CANAL DRAINAGE INFRASTRUCTURE  
IMPROVEMENTS PROJECT  
IN SECTION 39, T15S-R16E, & SECTIONS  
4 & 10, T15S-R17E  
LAFOURCHE PARISH, LOUISIANA

DATE: JULY 20, 2017

APPLICATION BY: **LAFOURCHE PARISH GOVERNMENT**





SCALE: 1" = 60'

PREPARED BY:

**DAVID A. WAITZ**  
ENGINEERING AND SURVEYING, INC.

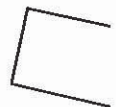
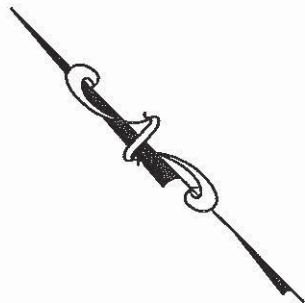
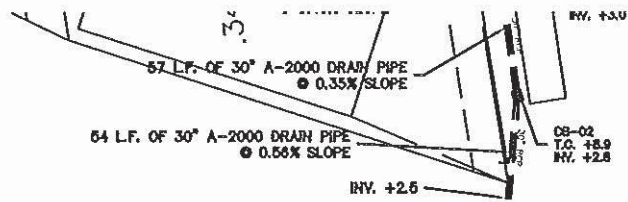
Civil Engineers & Professional Land Surveyors  
1107 Canal Blvd., Thibodaux, Louisiana 70301 (985) 447-4017  
EMAIL: [dwaitz@waitzengineering.com](mailto:dwaitz@waitzengineering.com)

DATE: JULY 20, 2017

APPLICATION BY: **LAFORCHE PARISH GOVERNMENT**

## PERMIT DRAWINGS

DUGAS CANAL DRAINAGE INFRASTRUCTURE  
IMPROVEMENTS PROJECT  
IN SECTION 39, T15S-R16E, & SECTIONS  
4 & 10, T15S-R17E  
LAFORCHE PARISH, LOUISIANA



SCALE: 1" = 60'

PREPARED BY: \_\_\_\_\_

**DAVID A. WAITZ**  
ENGINEERING AND SURVEYING, INC.

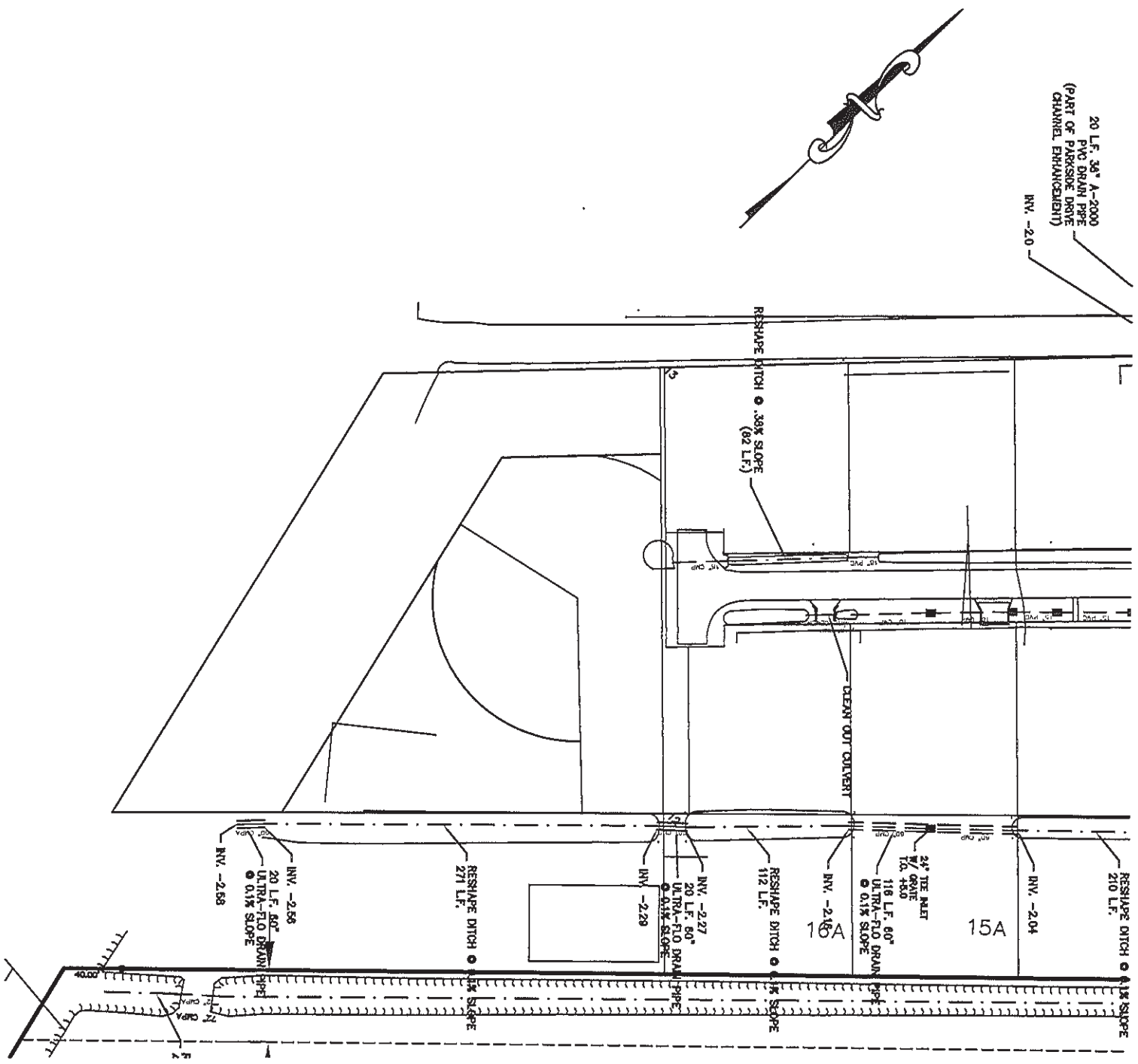
Civil Engineers & Professional Land Surveyors  
1107 Canal Blvd., Thibodaux, Louisiana 70301 (985) 447-4017  
EMAIL: [dwaitz@waitzengineering.com](mailto:dwaitz@waitzengineering.com)

**PERMIT DRAWINGS**

DUGAS CANAL DRAINAGE INFRASTRUCTURE  
IMPROVEMENTS PROJECT  
IN SECTION 39, T15S-R16E, & SECTIONS  
4 & 10, T15S-R17E  
LAFOURCHE PARISH, LOUISIANA

DATE: JULY 20, 2017

APPLICATION BY: **LAFOURCHE PARISH GOVERNMENT**



SCALE: 1" = 60'

PREPARED BY:

**DAVID A. WAITZ**

**ENGINEERING AND SURVEYING, INC.**

Civil Engineers & Professional Land Surveyors

1107 Canal Blvd., Thibodaux, Louisiana 70301 (986) 447-4017

EMAIL: [dwaitz@waitzenengineering.com](mailto:dwaitz@waitzenengineering.com)

DATE: JULY 20, 2017

APPLICATION BY: **LAFOURCHE PARISH GOVERNMENT**

**PERMIT DRAWINGS**

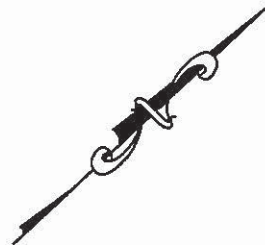
DUGAS CANAL DRAINAGE INFRASTRUCTURE

IMPROVEMENTS PROJECT

IN SECTION 39, T15S-R16E, & SECTIONS

4 & 10, T15S-R17E

LAFOURCHE PARISH, LOUISIANA



40 ARPENT CANAL

PROPOSED CONCRETE HEADWALL  
(SEE DETAILS ON SHEET 6)

20+00

19+00

MATCH LINE "A"

PLAN VIEW

SCALE: 1" = 40'

PREPARED BY:

**DAVID A. WAITZ**  
ENGINEERING AND SURVEYING, INC.

Civil Engineers & Professional Land Surveyors  
1107 Canal Blvd., Thibodaux, Louisiana 70301 (985) 447-4017  
EMAIL: [dwaitz@waitzengineering.com](mailto:dwaitz@waitzengineering.com)

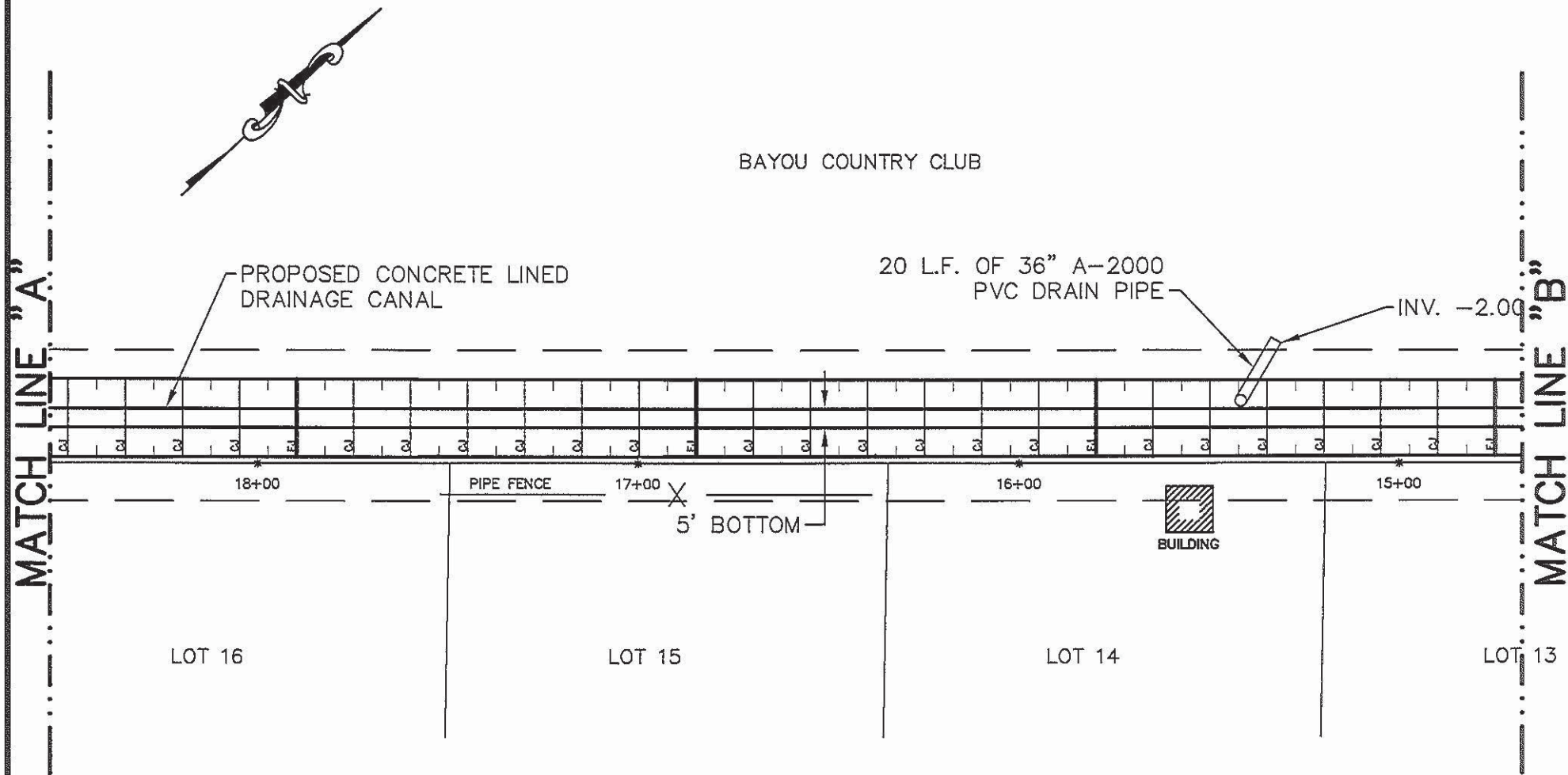
DATE: JULY 20, 2017

APPLICATION BY: **LAFORCHE PARISH GOVERNMENT**

**PERMIT DRAWINGS**

DUGAS CANAL DRAINAGE INFRASTRUCTURE  
IMPROVEMENTS PROJECT  
IN SECTION 39, T15S-R16E,  
LAFORCHE PARISH, LOUISIANA





**PLAN VIEW**

SCALE: 1" = 40'

PREPARED BY:

**DAVID A. WAITZ**

**ENGINEERING AND SURVEYING, INC.**

*Civil Engineers & Professional Land Surveyors*

1107 Canal Blvd., Thibodaux, Louisiana 70301 (985) 447-4017

EMAIL: [dwaitz@waitzenengineering.com](mailto:dwaitz@waitzenengineering.com)

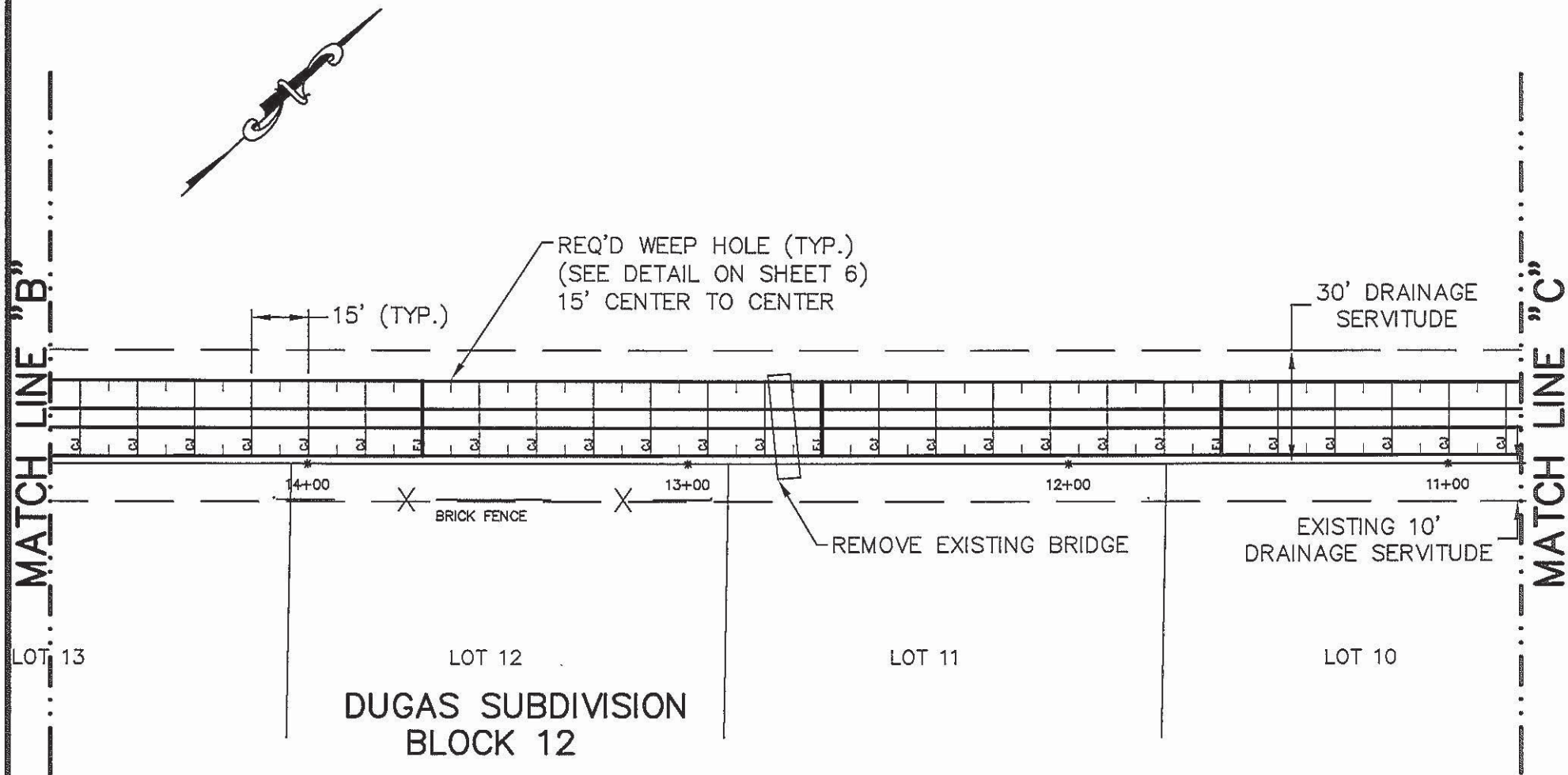
DATE: JULY 20, 2017

**PERMIT DRAWINGS**

DUGAS CANAL DRAINAGE INFRASTRUCTURE  
IMPROVEMENTS PROJECT

IN SECTION 39, T15S-R16E,  
LAFOURCHE PARISH, LOUISIANA

APPLICATION BY: **LAFOURCHE PARISH GOVERNMENT**



**PLAN VIEW**

SCALE: 1" = 40'

PREPARED BY:

**DAVID A. WAITZ**  
ENGINEERING AND SURVEYING, INC.

Civil Engineers & Professional Land Surveyors  
1107 Canal Blvd., Thibodaux, Louisiana 70301 (985) 447-4017  
EMAIL: [dwaitz@waitzengineering.com](mailto:dwaitz@waitzengineering.com)

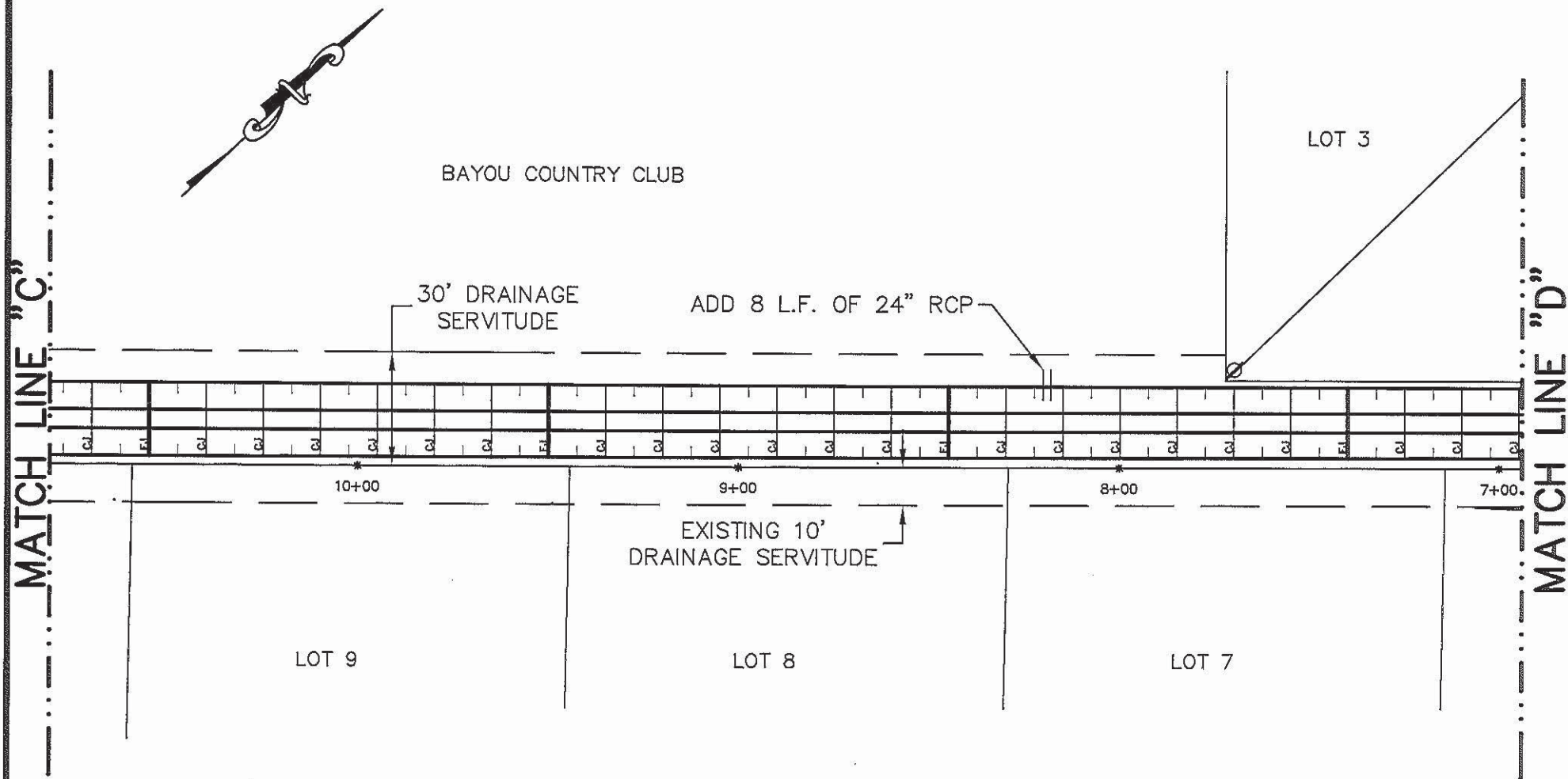
DATE: JULY 20, 2017

**PERMIT DRAWINGS**

DUGAS CANAL DRAINAGE INFRASTRUCTURE  
IMPROVEMENTS PROJECT  
IN SECTION 39, T15S-R16E,  
LAFOURCHE PARISH, LOUISIANA

APPLICATION BY: **LAFOURCHE PARISH GOVERNMENT**





# **PLAN VIEW**

SCALE: 1" = 40'

PREPARED BY:

**DAVID A. WAITZ**  
ENGINEERING AND SURVEYING, INC.

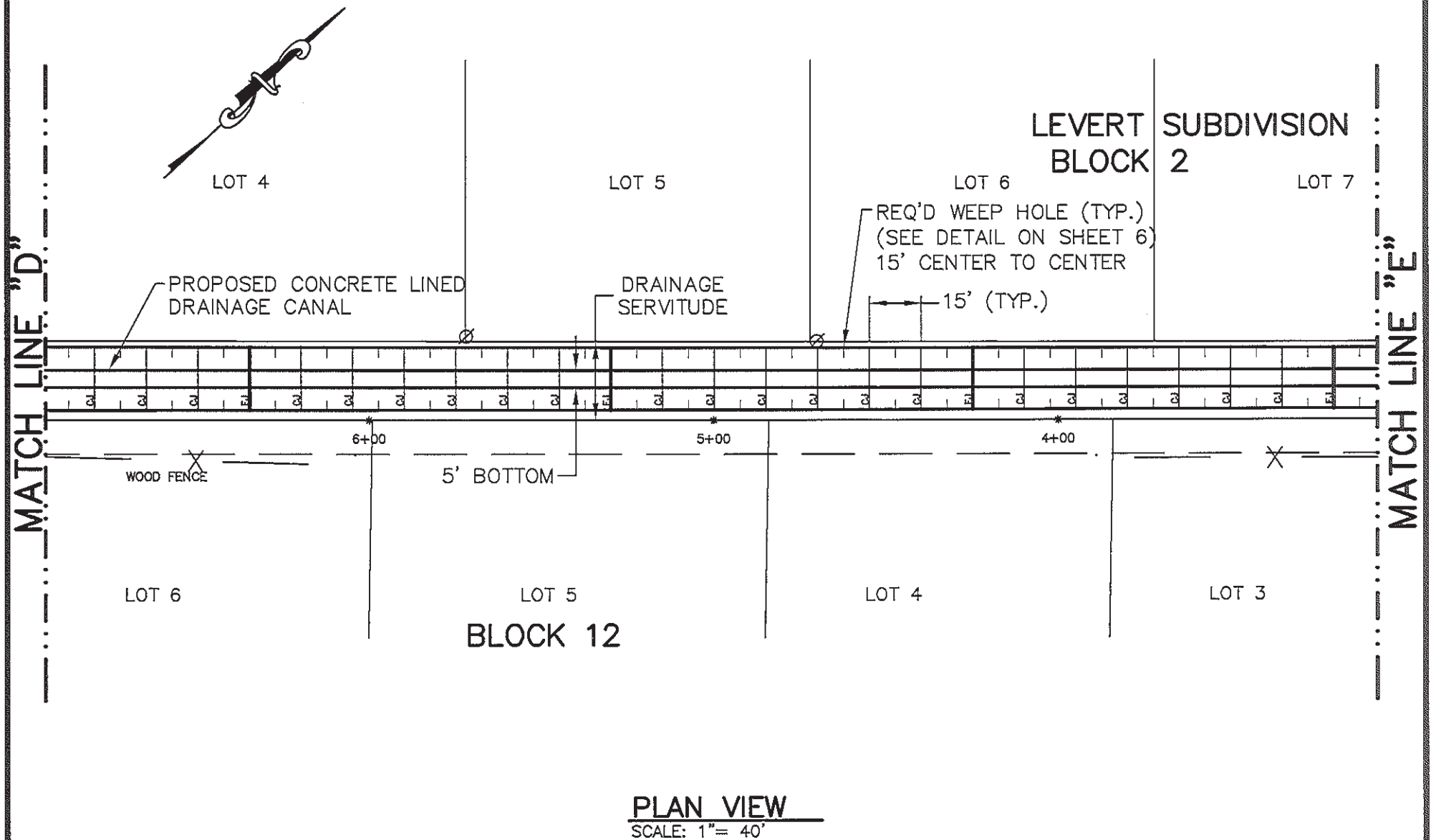
Civil Engineers & Professional Land Surveyors  
1107 Canal Blvd., Thibodaux, Louisiana 70301 (985) 447-4017  
EMAIL: [dwaitz@waitzengineering.com](mailto:dwaitz@waitzengineering.com)

DATE: JULY 20, 2017

## **PERMIT DRAWINGS**

DUGAS CANAL DRAINAGE INFRASTRUCTURE  
IMPROVEMENTS PROJECT  
IN SECTION 39, T15S-R16E,  
LAFOURCHE PARISH, LOUISIANA

APPLICATION BY: **LAFOURCHE PARISH GOVERNMENT**



PREPARED BY:

**DAVID A. WAITZ**  
ENGINEERING AND SURVEYING, INC.

Civil Engineers & Professional Land Surveyors  
1107 Canal Blvd., Thibodaux, Louisiana 70301 (985) 447-4017  
EMAIL: [dwaitz@waitzengineering.com](mailto:dwaitz@waitzengineering.com)

DATE: JULY 20, 2017

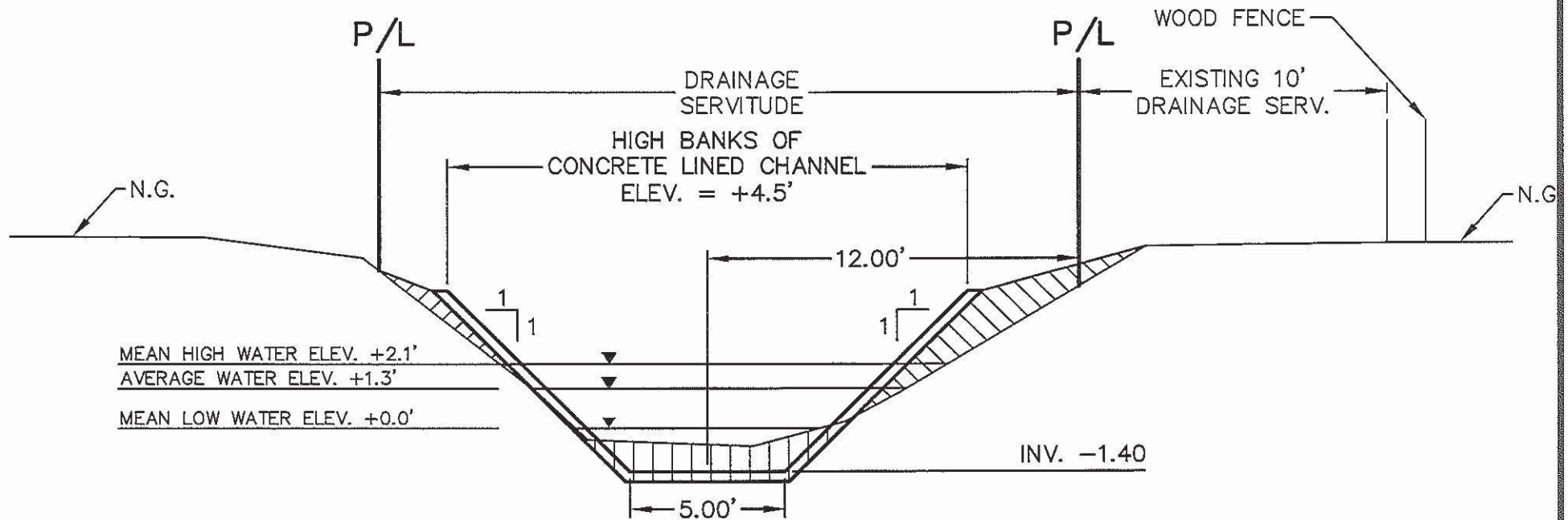
APPLICATION BY: **LAFORCHE PARISH GOVERNMENT**

**PERMIT DRAWINGS**

DUGAS CANAL DRAINAGE INFRASTRUCTURE  
IMPROVEMENTS PROJECT  
IN SECTION 39, T15S-R16E,  
LAFORCHE PARISH, LOUISIANA







**SECTION A-A**  
SCALE: 1" = 5'

PREPARED BY:

**DAVID A. WAITZ**  
ENGINEERING AND SURVEYING, INC.

Civil Engineers & Professional Land Surveyors  
1107 Canal Blvd., Thibodaux, Louisiana 70301 (985) 447-4017  
EMAIL: [dwaitz@waitzengineering.com](mailto:dwaitz@waitzengineering.com)

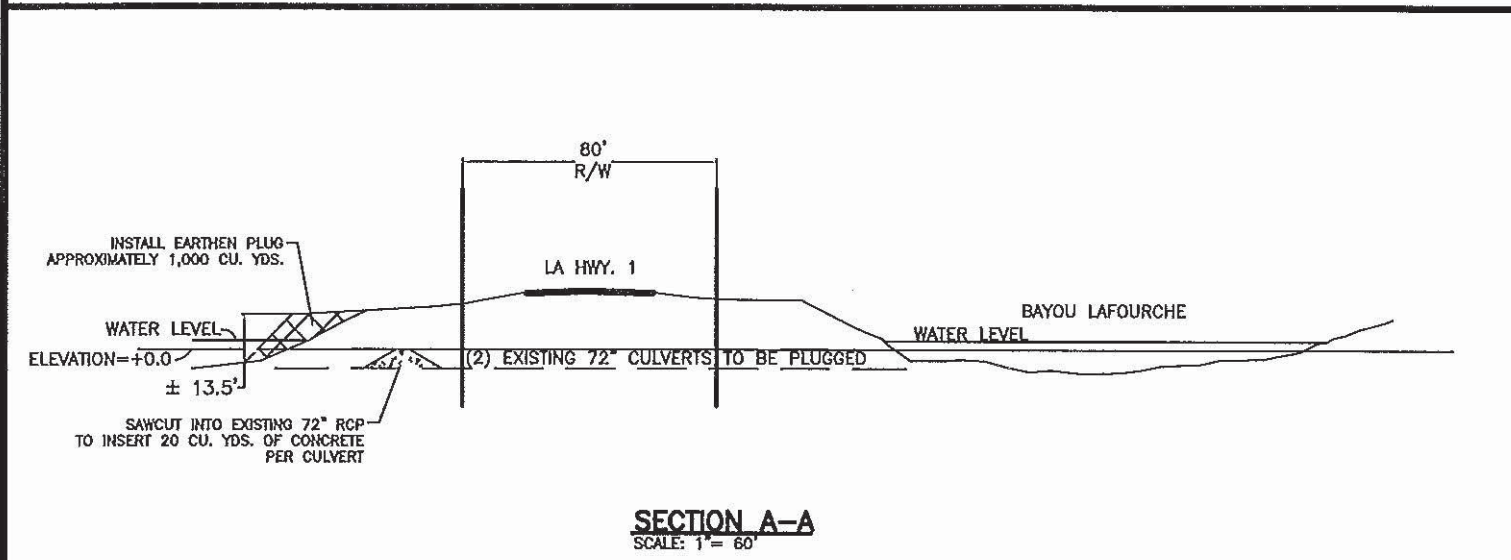
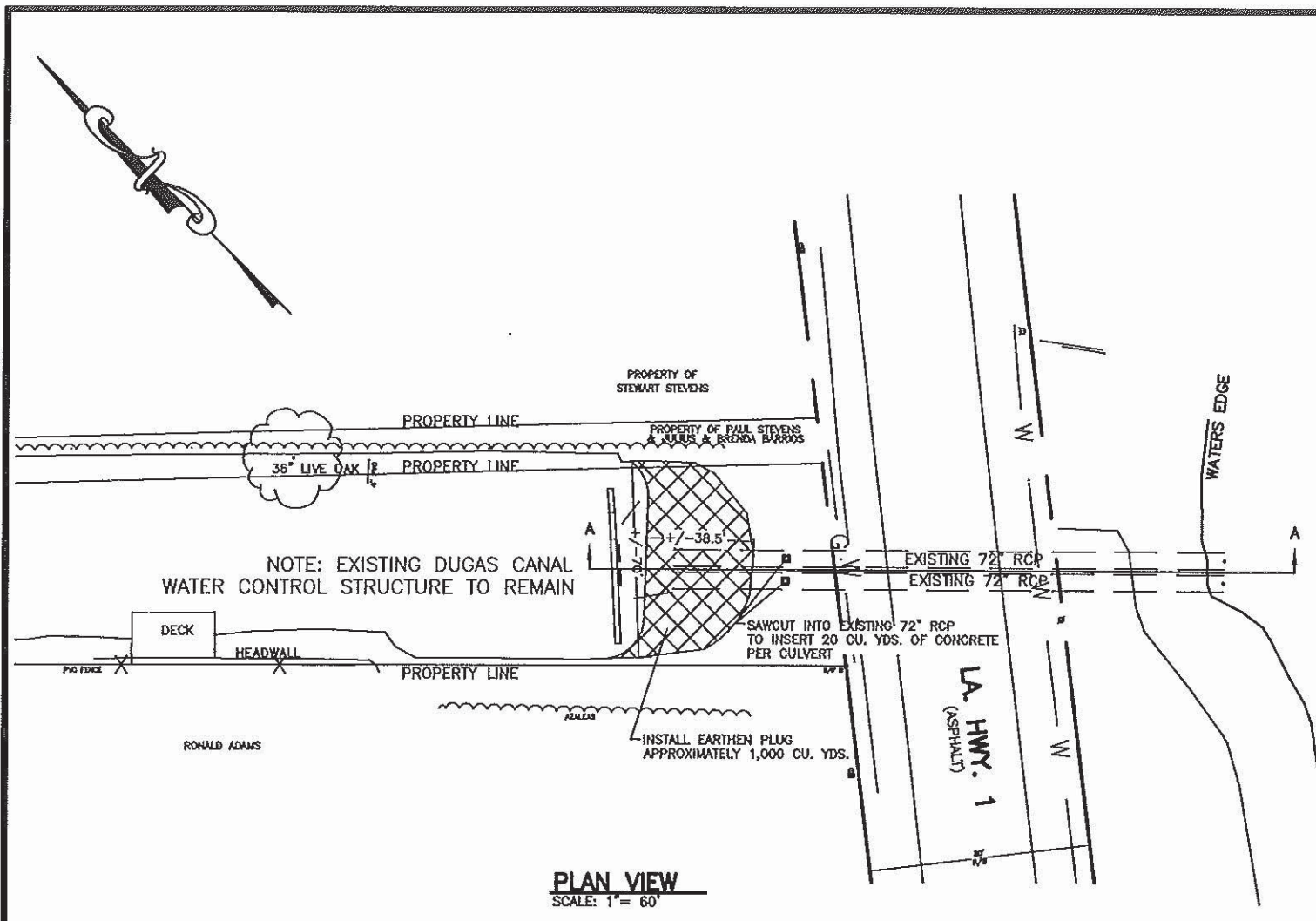
DATE: JULY 20, 2017

**PERMIT DRAWINGS**

DUGAS CANAL DRAINAGE INFRASTRUCTURE  
IMPROVEMENTS PROJECT  
IN SECTION 39, T15S-R16E,  
LAFOURCHE PARISH, LOUISIANA

APPLICATION BY: **LAFOURCHE PARISH GOVERNMENT**





PREPARED BY:

**DAVID A. WAITZ**  
ENGINEERING AND SURVEYING, INC.

Civil Engineers & Professional Land Surveyors  
1107 Canal Blvd., Thibodaux, Louisiana 70301 (985) 447-4017  
EMAIL: [dwaitz@waitzengineering.com](mailto:dwaitz@waitzengineering.com)

DATE: JULY 20, 2017

APPLICATION BY: **LAFORCHE PARISH GOVERNMENT**

### PERMIT DRAWINGS

DUGAS CANAL DRAINAGE INFRASTRUCTURE  
IMPROVEMENTS PROJECT  
IN SECTION 39, T15S-R16E, & SECTIONS  
4 & 10, T15S-R17E  
LAFORCHE PARISH, LOUISIANA