

**MR. SEWELL**

**COASTAL WETLANDS PLANNING, PROTECTION  
AND RESTORATION ACT**

**TASK FORCE MEETING**

**OCTOBER 19, 1992**

COASTAL WETLANDS PLANNING, PROTECTION AND RESTORATION ACT

TASK FORCE MEETING

October 19, 1992

TABLE OF CONTENTS

<u>Title</u>	<u>Tab</u>
Agenda .....	A
Task Force Members.....	B
Task Force Procedures.....	C
Minutes from the September 1, 1992 Task Force Meeting.....	D
Proposal for Monitoring of Priority Project List Projects .....	E
Proposal for Development of a Hydraulic Model of the Coastal Zone.....	F
Recommendation of the Technical Committee and the Citizens Participation Group Regarding the 2nd Priority Project List.....	G
Status Report on 1st Priority Project List .....	H
Additional Agenda Items.....	I
Date and Location of the Next Task Force Meeting.....	J
Request for Written Questions from the Public .....	K
Summary of the CWPPRA and Complete Text.....	L

COASTAL WETLANDS PLANNING, PROTECTION AND RESTORATION ACT

TASK FORCE MEETING  
October 19, 1992

AGENDA

- I. **Introductions**
  - A. Task Force Members or Alternates
  - B. Other Attendees
  - C. Opening Remarks by Task Force Members
- II. **Adoption of Minutes from the September 1, 1992 Meeting**
- III. **Status of Tasks from September 1992 Meeting Requiring Further Action**
  - A. Recommendation of Technical Committee Regarding a Proposal for Monitoring of Priority Project List Projects--Mr. Schroeder
  - B. Proposal for Development of a Hydraulic Model of the Coastal Zone--Mr. Schroeder
- IV. **2nd Priority Project List**
  - A. Recommendation of Technical Committee and Citizens Participation Group--Mr. Schroeder
  - B. Discussion and Action by Task Force
- V. **Additional Agenda Items**
- VI. **Date and Location of the Next Task Force Meeting**
- VII. **Request for Written Questions from the Public**

COASTAL WETLANDS PLANNING, PROTECTION AND RESTORATION ACT

TASK FORCE MEMBERS

<u>Task Force Member</u>	<u>Member's Representative</u>
Governor, State of Louisiana	Dr. Len Bahr Executive Assistant for Coastal Activities Office of the Governor P. O. Box 94004 Baton Rouge, LA 70804-9004 (504) 922-3244; FAX: (504) 922-3251
Administrator, EPA	Mr. Russell F. Rhoades Division Director Environmental Services Division Region VI Environmental Protection Agency 1445 Ross Ave. Dallas, Texas 75202 (214) 655-2210; FAX: (214) 655-7446
Secretary, Department of the Interior	Mr. S. Scott Sewell Director Minerals Management Service U.S. Department of the Interior Mail Stop: 4230 M.I.B. 1849 C Street, NW, Office #4210 Washington, D.C. 20240 (202) 208-3500; FAX: (202) 208-4684

COASTAL WETLANDS PLANNING, PROTECTION AND RESTORATION ACT

TASK FORCE MEMBERS (cont.)

<u>Task Force Member</u>	<u>Member's Representative</u>
Secretary, Department of Agriculture	Mr. Horace J. Austin State Conservationist Soil Conservation Service 3737 Government Street Alexandria, Louisiana 71302 (318) 473-7751; FAX: (318) 473-7771
Secretary, Department of Commerce	Dr. Clement Lewsey Gulf Regional Manager Coastal Programs Division Office of Ocean and Coastal Resource Management U.S. Department of Commerce Room 721, Universal Bldg. 1825 Connecticut Avenue, N.W. Washington, D.C. 20235 (202) 673-5138; FAX: (202) 673-5329
Secretary of the Army (Chairman)	Col. Michael Diffley District Engineer U.S. Army Engineer District, N.O. P.O. Box 60267 New Orleans, LA 70160-0267 (504) 862-2204; FAX: (504) 862-2492

## II. Administrative Procedures

### A. Quorum

A quorum of the Task Force shall be a simple majority of the appointed members of the Task Force, or their designated representatives.

### B. Voting

Whenever possible, the Task Force shall resolve issues by consensus. Otherwise, issues will be decided by a simple majority vote, with each member of the Task Force having one vote. The Task Force Chairperson may vote on any issue, but must vote to break a tie. All votes shall be via voice and individual votes shall be recorded in the minutes, which shall be public documents.

### C. Agenda Development/Approval

The agenda will be developed by the Chairperson's staff. Task Force members or Technical Committee Chairpersons may submit agenda items to the Chairperson in advance. The agenda will be distributed to each Task Force member (and others on a distribution list maintained by the Chairperson's staff) within two weeks prior to the scheduled meeting date. Additional agenda items may be added by any Task Force member at the beginning of a meeting.

### D. Minutes

The Chairperson will arrange for minutes of all meetings to be taken and distributed within two weeks after a meeting is held to all Task Force members and others on the distribution list.

### E. Distribution of Information/Products

All information and products developed by the Task Force members or their staffs will be distributed to all Task Force members normally within two weeks in advance of any proposed action in order to allow adequate time for review and comment, unless the information/product is developed at the meeting or an emergency situation occurs.

### III. Miscellaneous

#### A. Liability Disclaimer

To the extent permitted by the law of the State of Louisiana and Federal regulations, neither the Task Force nor any of its members individually shall be liable for the negligent acts or omissions of an employee, agent or representative selected with reasonable care, nor for anything the Task Force may do or refrain from doing in good faith, including the following: errors in judgement, acts done or committed on advice of counsel, or mistakes of fact or law.

#### B. Conflict of Interest

No member of the Task Force (or designated representative) shall participate in any decision or vote which would constitute a conflict of interest under Federal or State law. Any potential conflicts of interest must clearly be stated by the member prior to any discussion on the agenda item.

COASTAL WETLANDS PLANNING, PROTECTION, AND RESTORATION ACT

TASK FORCE MEETING

September 1, 1992

MINUTES

I. INTRODUCTION

Colonel Michael Diffley, representing the Secretary of the Army, convened the fifth meeting of the Louisiana Coastal Wetlands Conservation and Restoration Task Force at 9:40 a.m., September 1, 1992, in the District Assembly Room of the New Orleans District, ~~U.S. Army Corps of Engineers~~. The Agenda is attached as Enclosure 1. The Task Force was created by the Coastal Wetlands Planning, Protection and Restoration Act (CWPPRA), which was signed into law (PL 101-646, Title III) by President Bush on November 29, 1990.

II. ATTENDEES

The Attendance Records for the Task Force meeting are attached as Enclosure 2. Listed below are the six Task Force members. With the exception of Dr. Lewsey and Mr. Sewell, who were represented by Mr. Ric Ruebsamen and Mr. David Fruge respectively, all were in attendance.

Dr. Len Bahr, State of Louisiana  
Mr. Russell Rhoades, Environmental Protection Agency  
Mr. S. Scott Sewell, U.S. Department of the Interior  
Mr. Horace Austin, U.S. Department of Agriculture  
Dr. Clement Lewsey, U.S. Department of Commerce  
Col. Michael Diffley, U.S. Department of the Army, Chairman



### III. APPROVAL OF MINUTES FROM PREVIOUS MEETING

The minutes from the Task Force meeting held on May 28, 1992, were reviewed, and Mr. Fruge requested that two additions be made. Additional information was inserted into Section V, paragraph C, concerning the management of inter-agency disbursement of CWPPRA funds. Under Section VII an additional paragraph was inserted. Paragraph A concerns the comments made regarding Real Estate compliance with section 303e. The minutes (Enclosure 3) were unanimously approved as amended by the Task Force members. [1/504] \*

### IV. TASK FORCE DECISIONS

The Task Force voted on and passed the following motions:

- A. Mr. Fruge outlined a request by the USFWS for additional FY 92 funding for their GIS effort in support of the CWPPRA to date. An amount of \$37,000 was requested to fund completed and additional requests for GIS support. Mr. Rhoades moved that the funding be approved and was seconded by Mr. Ruebsamen. The Task Force unanimously approved the motion. [2/029]
- B. Mr. Austin requested additional FY 92 funding for a proposed study of flotant marsh development. The SCS study required an additional \$20,000 of planning funds. However, the detailed proposal had not been reviewed at the time of the Task Force meeting. Because the Task Force would not meet again prior to the end of the FY Mr. Austin moved that the funding be approved contingent on the review and approval of the proposal by the Technical Committee. The motion was seconded by Mr. Fruge and approved unanimously by the Task Force. [2/098]
- C. Col. Diffley outlined a summary of the proposed FY 93 budget for the Task Force. (Enclosure 4) It was noted that the entire \$5,000,000 allocated for FY 93 was budgeted with no contingencies. It has been projected that a substantial amount of FY 92 funds will be carried over into FY 93. It is proposed that all FY 92 carry over funds be remanded to the Task Force to reallocate for contingencies in FY 93. Mr. Rhoades moved that the FY 93 budget be adopted as presented and was seconded by Mr. Austin. The motion was approved unanimously by the Task Force. [2/380]

## V. TASKS REQUIRING FURTHER ACTION

A. Col. Diffley requested that each Basin Captain schedule a meeting with him sometime during the month of September. The intent of these meetings is to exchange detailed information on the status and the direction of the individual basin plans and to provide the Basin Captain guidance. Col. Diffley extended an open invitation to the other members of the Task Force or their representatives to join him for these briefings. [2/396]

B. Dr. Bahr presented a strawman proposal from the State concerning the management of the monitoring and data collection program for CWPPRA projects. Following a discussion concerning the administration of a monitoring program, Col. Diffley expressed some reservations with portions of the State's proposal. He requested that Dr. Stewart and the Monitoring Work Group also develop a proposal for the administration of the monitoring program. The Colonel outlined 3 elements that should be addressed:

I. Deciding who defines the data to be collected

II. Who does the data collection and storage

III. Who does the data analysis

The task of reviewing any proposals and providing the Task Force a recommendation was remanded to the Technical Committee to be provided by the next Task Force meeting. [6/400-550]

C. Dr. Bahr introduced a proposal from Dr. Joseph Suhayda to modify an existing hydraulic model of the Louisiana coast developed by FEMA. The enhanced model would be used to evaluate proposed CWPPRA projects. Col. Diffley felt that presentation of the amount of information necessary to adequately evaluate the proposal would be too time consuming. The review and evaluation of the proposal was tasked to the Technical Committee. [7/099]

## VI. STATUS OF FISCAL MATTERS

B. Mr. Rowe informed the Task Force that the desired cutoff for submission of FY 92 billings will be the end of the first quarter of FY 93. He also stated that he and Ms. Weber of the New Orleans District finance and accounting office would compose a letter to the finance and accounting offices of the other Task Force member agencies. This letter will indicate the desired

deadline for bills and the Task Force's intentions for fiscal 1992 carryover funds. The charging of labor to FY 93 funds should begin as soon after October 1st as possible. This is contingent upon the delivery of FY 93 MIPR's by the Corps and may require some lead time. Col. Diffley indicated that processing of these funds would be expedited as soon as clearance is received from the Corps headquarters finance and accounting office. [2/124]

## VII. INFORMATIONAL AGENDA ITEMS

- A. Mr. Elguezabal informed the Task Force that a draft scope of services for the management of inter-agency disbursement of CWPPRA funds had been supplied to the member agencies. A mid September meeting was anticipated, as needed, to resolve any comments on the draft scope of work. [1/510]
- B. Mr. Rowe informed the Task Force that the method for continuing involvement of the congressional delegation would include inviting its members or their staffs to Task Force meetings, the sending of the minutes to local offices and invitations to any special briefings. It was noted that all Task Force meetings are open and the attendance of the members of the congressional delegation, or their staffs, would be welcomed. [1/530]
- C. The Task Force did not provide an endorsement, by vote, of the conceptual plans for each of the coastal basins. The members instead requested that the Basin Captains consider the comments provided at the meeting. Col. Diffley noted that additional comments and suggestions might result from the Basin Captains individual briefings he had requested. [7/281]

## VIII. ADDITIONAL AGENDA ITEMS

- A. Dr. Stewart commented on the need to develop a means of administering the monitoring effort. Dr. Bahr responded to these comments by presenting the State's proposal on this topic. The subsequent discussion resulted in the action item outlined in Section V, paragraph B of these minutes. [6/208-624]
- B. Dr. Bahr's presentation of Dr. Suhayda's proposal for developing a model for the Task Force resulted in the action item outlined in Section V, paragraph C of these minutes. [7/031]

**IX. DATE/LOCATION OF THE NEXT TASK FORCE MEETING**

The date for the next Task Force meeting is October 19, 1992. The site of the meeting will be the U.S. Army Corps of Engineers New Orleans District. The meeting will be held in the New Orleans District Assembly Room. [7/333]

**X. Questions from the Public**

No written questions or comments were received from the public. [7/340]

**XI. Adjournment**

The Task Force meeting was adjourned at 2:40 p.m. [7/355]

---

\* The Task Force meeting was recorded on audio tape. These bracketed figures represent the Tape#/Counter# for the discussion of this item.

Encl 1

**COASTAL WETLANDS PLANNING, PROTECTION AND RESTORATION ACT**

**TASK FORCE MEETING**  
September 1, 1992

**ENCLOSURE 1**

**AGENDA**

Encl 1

COASTAL WETLANDS PLANNING, PROTECTION AND RESTORATION ACT

TASK FORCE MEETING  
September 1, 1992

AGENDA

- I. **Introductions**
  - A. Task Force Members or Alternates
  - B. Other Attendees
  - C. Opening Remarks by Task Force Members
- II. **Adoption of Minutes from the May 28, 1992 Meeting**
- III. **Status of Tasks from May 1992 Meeting Requiring Further Action**
  - A. Development of a Scope of Services for management of inter-agency disbursement of CWPPRA funds--Mr. Elguezabal
  - B. Development of a method for the updating and continuing involvement of the congressional delegation and their staff--Mr. Rowe
  - C. Preparation of a one-page status report on Priority List projects for inclusion in Task Force meeting books--Mr. Rowe
- IV. **Budget for Fiscal Year 1992**
  - A. USFWS request for additional funds to complete FY92 GIS (Geographic Information System) support work--Mr. Fruge
  - B. Proposed cut-off date for FY 92 bills--Mr. Rowe
  - C. Discussion and Action by Task Force
- V. **Authorization of Planning Budget for Fiscal Year 1993--Mr. Rowe**
- VI. **Review and Endorsement of Conceptual Plan for Each Basin--Basin Captains**
  - A. Pontchartrain                      Ms. Hawes
  - B. Breton Sound                      Ms. Keller-Bivona
  - C. Mississippi River Delta              Mr. Axtman
  - D. Barataria                          Mr. Holder
  - E. Terrebonne                        Mr. Thomas
  - F. Atchafalaya                        Ms. Powell
  - G. Teche/Vermilion                    Mr. Demcheck
  - H. Mermentau                         Mr. Conti
  - I. Calcasieu/Sabine                    Mr. Landreneau
- J. **Discussion and Action by Task Force**

**VII. Additional Agenda Items**

**VIII. Date and Location of the Next Task Force Meeting**

**IX. Request for Written Questions from the Public**

Encl 2

COASTAL WETLANDS PLANNING, PROTECTION AND RESTORATION ACT

TASK FORCE MEETING  
September 1, 1992

ENCLOSURE 2  
ATTENDANCE RECORDS

Encl 2





## ATTENDANCE RECORD



DATE(S) 1 Sep 1992	SPONSORING ORGANIZATION Planning Division	LOCATION District Assembly Room
-----------------------	--	------------------------------------

PURPOSE Louisiana Coastal Wetlands Planning, Protection and Restoration Task Force

## PARTICIPANT REGISTER \*

NAME	ORGANIZATION	TELEPHONE NUMBER
U. Hayden	NOSSA	522-5392
C.B. HAKENTOS	GULF INTRACOASTAL CANAL Assoc	(504) 523-5281
Oscar Powell	COE	(504) 862-2512
Russell Rhoades	EPA	214 655-2210
Norm Thomas	EPA	(214) 655-2260
David Fruge	USDI/FWS	(318) 264-6630
Ric Ruebsamen	DOC/NMFS	504/389-0508
Denise Chew	DOI/MMS	504/736-2793
Greg Steyer	DNR/CRD	(504) 342-9435
Red Pittman	COE/PMO	862-2846
Koss Atkins	JOHNSTON (Bohn Pledge)	1-389-0395
Stan Green	COE Plan Div	(504) 862-1486
Janet Shuffler	OCRM/NOAA/CPD	(212) 606-4018
Bill Govee	DNR/CRD	(504) 342-7308
David M. Soiler	LA Dept of Natural Resources	504-342-1375
Gerry Bodin	Fish + Wildlife Service	318- <del>266</del> -6630
Jimmy Johnston	Fish + Wildlife Service	318-266-8556
Len Bahr	Gov's Office	504-922-3244
Jan Stone	" "	" " "
Dom Elguera	Corps of ENR	(504) 862-2597
Wald Robbins	CELMV-PD-C	(601) 634-5829
Bill Sargent	DNR/CRD	504) 342-9420
Joe Monti	SCS	318-473-7687



Encl 3

**COASTAL WETLANDS PLANNING, PROTECTION, AND RESTORATION ACT**

**TASK FORCE MEETING**  
September 1, 1992

**ENCLOSURE 3**

**MINUTES FROM THE MAY 28, 1992 TASK FORCE MEETING**

Encl 3

# COASTAL WETLANDS PLANNING, PROTECTION, AND RESTORATION ACT

## TASK FORCE MEETING

May 28, 1992

### MINUTES

#### I. INTRODUCTION

Colonel Michael Diffley, representing the Secretary of the Army, convened the fifth meeting of the Louisiana Coastal Wetlands Conservation and Restoration Task Force at 9:45 a.m., May 28, 1992, in the District Assembly Room of the New Orleans District, U.S. Army Corps of Engineers. The Agenda is attached as Enclosure 1. The Task Force was created by the Coastal Wetlands Planning, Protection and Restoration Act (CWPPRA) which was signed into law (PL 101-646, Title III) by President Bush on November 29, 1990.

#### II. ATTENDEES

The Attendance Records for the Task Force meeting are attached as Enclosure 2. Listed below are the six Task Force members. With the exception of Dr. Lewsey and Mr. Sewell, who were represented by Mr. Ric Ruebsamen and Mr. David Fruge respectively, all were in attendance.

Dr. Len Bahr, State of Louisiana  
Mr. Russell Rhoades, Environmental Protection Agency  
Mr. S. Scott Sewell, U.S. Department of the Interior  
Mr. Horace Austin, U.S. Department of Agriculture  
Dr. Clement Lewsey, U.S. Department of Commerce  
Col. Michael Diffley, U.S. Department of the Army, Chairman

#### III. APPROVAL OF MINUTES FROM PREVIOUS MEETING

The minutes from the fourth Task Force meeting, held on February 20, 1992, (Enclosure 3) were unanimously approved by the Task Force members. [1/180] \*

#### **IV. TASK FORCE DECISIONS**

The Task Force voted and passed the following motions:

- A. Adopt the recommendations of the Technical Committee as to the "Amendment of the Fiscal Year 1992 Budget" (Enclosure 4) for the reallocation of fiscal 1992 funds. The reallocation was made to account for increases in planning and engineering support. It was agreed that \$100,000 in contingency funds would be left in the budget for possible action by the Task Force at their next meeting. The Task Force members unanimously approved this amendment. [2/125]
- B. Mr. Mielke presented two versions of the "Task Force Vision Statement" (Enclosure 5) reviewed by the Citizens Participation Group. After some discussion of the merits of each version, and their possible amendment, Mr. Fruge' moved that the 2nd version be adopted without change. Mr. Bahr seconded, and the Task Force unanimously approved the motion. [5/495]

#### **V. TASKS REQUIRING FURTHER ACTION**

- A. Colonel Diffley requested that Dr. Stewart and the Monitoring Work Group coordinate with the Lead Agencies to verify and ensure monitoring plans for the 1st Priority List projects. [1/254]
- B. Mr. Ruebsamen requested that Mr. Elguezabal supply him with a completed copy of the model Cost Sharing Agreement. [1/346]
- C. Mr. Elguezabal discussed a plan for the Corps of Engineers to handle the accounting of in-kind services provided by the state, as verified by the lead federal agency, and the funding of this service. Following this discussion of "Funding for the Management of Inter-Agency Disbursement of CWPPRA Funds", Col. Diffley requested that Mr. Elguezabal compile a scope of administrative services for submittal to the Task Force agencies. It was also requested that this topic be an agenda item at the next Task Force meeting. [2/470]
- D. Col. Diffley tasked his staff with the development of a method for the updating and continuing involvement of the congressional delegation and their staffs. This methodology will be an agenda item for discussion at the next Task Force meeting. [5/540]

## VI. STATUS OF FISCAL MATTERS

- A. Mr. Rowe alerted the Task Force to the need to begin preparing budget requests for the fiscal 1993 budget. This will be an agenda item for the next Task Force meeting. [2/472]
- B. Mr. Rowe also reviewed the procedure for the carryover of fiscal 1992 funds. Those funds will be available for the reimbursement of fiscal 1992 expenditures into fiscal 1993. Haste in presenting bills after the end of the fiscal year was advised. The disposition of unobligated fiscal 1992 funds was also discussed. There is some question as to whether these funds would be available for obligation in the fiscal 1993 budget. Mr. Rowe supplied a letter from Corps of Engineers headquarters that seemed to indicate that unobligated funds could be carried over for use in the next fiscal year. Col. Diffley requested that this be verified with the Corps headquarters finance and accounting staff before the next Task Force meeting. [2/556, 631]

## VII. INFORMATIONAL AGENDA ITEMS

- A. Mr. T. J. Brown of the New Orleans District's Real Estate Division, updated the Task Force on the status of procedures for compliance with section 303e. Mr. Brown stated that in the case of the BA-2 project, the Soil Conservation Service would acquire real estate easements only in areas of actual construction. Compliance with section 303e for wetlands protected by this project would be achieved through federal and state permitting programs. He indicated that SCS use of this procedure for the BA-2 project met with the approval of NOD's real estate expertise. He also indicated that other lead agencies were interested in using this procedure. [1/727]
- B. Dr. S. M. Gagliano presented to the Task Force a conceptual overview of the problems of the Louisiana coast and the probable solutions to be dealt with in the Restoration Plan. A transcript of his presentation (Enclosure 6) has been included in these minutes. [2/631-3/500]
- C. The Basin Captains reported on the conceptual plans and their status in each of the coastal basins. [4-105]

## **VIII. ADDITIONAL AGENDA ITEMS**

- A. Dr. Bahr suggested that status reports on Priority List projects be included as a regular agenda item. Col. Diffley noted that a reasonable compromise might be to have each Lead Agency submit a one page status report for inclusion as a binder tab for each Task Force meeting. Dr. Bahr stated that he was agreeable with that idea and Mr. Schroeder agreed to develop a format for the reports. [5/526]
- B. Col. Diffley stated that he had been contacted by Senator Johnstons' staff concerning some form of regular involvement. The Task Force was in agreement that a method to more closely involve the Congressional delegation and their staffs, both in and out of state, is needed. The disposition of this item is addressed in section V., paragraph D. of these minutes. [5/540]

## **IX. DATE/LOCATION OF THE NEXT TASK FORCE MEETING**

The date for the next Task Force meeting is August 26th 1992. The site of the meeting will be the U.S. Army Corps of Engineers New Orleans District. The meeting will be held in the New Orleans District Assembly Room. [5/638]

## **X. Questions from the Public**

No written questions or comments were received from the public. [5/655]

## **XI. Adjournment**

The Task Force meeting was adjourned at 2:20 p.m. [5/658]

---

\* The Task Force meeting was recorded on audio tape. These bracketed figures represent the Tape#/Counter# for the discussion of this item.

Encl 4

**COASTAL WETLANDS PLANNING, PROTECTION AND RESTORATION ACT**

**TASK FORCE MEETING**  
September 1, 1992

**ENCLOSURE 4**

**Summary of the Fiscal Year 1993 Budget**

Encl 4



**Coastal Wetlands Planning, Protection and Restoration Act  
FY 1993 Budget Proposal  
Allocation of Cost and Associated Manpower**

Activity	Dept of Agriculture Soil Conservation Svc		Dept of the Army US Army Corps of Engrs		Dept of Commerce (2 Agencies)		Dept of Interior (4 Agencies)		Environmental Protection Agency		State of Louisiana		SUMMARY	
	Mnhrs	Cost (\$)	Mnhrs	Cost (\$)	Mnhrs	Cost (\$)	Mnhrs	Cost (\$)	Mnhrs	Cost (\$)	Mnhrs	Cost (\$)	Mnhrs	Cost (\$)
<b>Work Items--Detailed Planning Schedule</b>														
<b>Hired Labor Items</b>														
<b>Restoration Plan</b>														
RP 0110	2,565	67,069	2,132	91,012	316	11,720	0	0	600	16,160	1,240	28,840	6,853	214,801
RP 0120	160	5,314	216	9,141	40	1,200	0	0	100	3,200	496	10,736	1,012	29,591
RP 0130	385	11,909	412	15,358	300	11,160	0	0	50	1,580	1,216	28,976	2,363	68,983
RP 0140	0	0	132	4,800	0	0	0	0	0	0	84	2,484	216	7,284
RP 0145	492	14,705	0	0	340	14,280	120	3,047	200	6,560	744	19,944	1,896	58,536
RP 0150	1,830	43,464	780	29,510	440	14,880	960	23,702	280	7,120	1,240	22,040	5,530	140,716
RP 0160	880	20,712	576	22,245	240	8,160	320	7,829	240	6,060	704	13,384	2,960	78,390
RP 0170	280	7,460	388	17,401	40	1,360	40	894	100	2,800	430	10,265	1,278	40,180
RP 0175	1,164	36,538	960	42,300	0	0	0	0	300	8,800	0	0	2,424	87,638
RP 0180	552	17,489	560	23,448	80	3,360	240	5,928	50	1,720	310	7,425	1,792	59,370
RP 0190	240	5,918	1,124	44,513	0	0	208	5,269	220	6,280	430	10,825	2,222	72,805
RP 0200	1,084	28,139	504	17,803	40	1,680	240	5,850	160	4,320	248	4,408	2,276	62,200
RP 0210	128	4,443	268	11,463	120	4,470	72	2,001	60	2,200	290	6,945	938	31,522
RP 2220	48	2,254	100	4,359	16	560	72	2,001	100	3,800	266	6,421	602	19,395
RP 0230	1,600	42,510	1,808	70,371	600	20,400	760	18,762	400	11,920	1,640	32,240	6,808	196,203
RP 0235	0	0	0	0	40	1,400	0	0	0	0	0	0	40	1,400
RP 0240	88	3,961	104	4,637	160	6,160	160	4,399	130	4,868	430	10,745	1,072	34,770
RP 0250	432	14,421	148	6,279	0	0	0	0	0	0	0	0	580	20,700
RP 0260	96	3,769	144	6,722	120	4,280	96	2,639	118	4,260	310	7,425	884	29,095
RP 0270	724	17,845	984	37,183	40	1,680	360	8,896	136	3,888	642	13,663	2,886	83,155
RP 0280	440	14,518	760	32,449	160	5,760	192	4,717	300	10,000	350	8,905	2,202	76,349
RP 0290	0	0	0	0	0	0	0	0	0	0	484	10,595	484	10,595
RP 0300	168	5,479	244	10,431	96	3,000	240	5,850	70	2,500	528	12,239	1,346	39,499
RP 0310	680	17,133	1,120	45,658	440	16,080	360	8,896	156	4,592	992	27,392	3,748	119,751
<b>Total Restoration Plan</b>	<b>14,036</b>	<b>385,050</b>	<b>13,464</b>	<b>547,083</b>	<b>3,628</b>	<b>131,590</b>	<b>4,440</b>	<b>110,680</b>	<b>3,770</b>	<b>112,628</b>	<b>13,074</b>	<b>295,897</b>	<b>52,412</b>	<b>1,582,928</b>

**Coastal Wetlands Planning, Protection and Restoration Act  
FY 1993 Budget Proposal  
Allocation of Cost and Associated Manpower**

Activity	Dept of Agriculture <u>Soil Conservation Svc</u>		Dept of the Army <u>US Army Corps of Engrs</u>		Dept of Commerce <u>(2 Agencies)</u>		Dept of Interior <u>(4 Agencies)</u>		Environmental <u>Protection Agency</u>		State of Louisiana		<u>SUMMARY</u>	
	Mnhrs	Cost (\$)	Mnhrs	Cost (\$)	Mnhrs	Cost (\$)	Mnhrs	Cost (\$)	Mnhrs	Cost (\$)	Mnhrs	Cost (\$)	Mnhrs	Cost (\$)
<b>1st Priority Project List</b>														
SR 1020	28	1,048	44	1,813	0	0	24	654	33	916	0	0	129	4,431
Subtotal 1st List	28	1,048	44	1,813	0	0	24	654	33	916	0	0	129	4,431
<b>2nd Priority Project List</b>														
PL 2060	72	2,547	300	12,750	40	1,400	120	3,335	80	2,900	124	3,444	736	26,376
PL 2070	80	2,489	300	12,750	84	2,958	96	2,639	78	2,820	244	5,659	882	29,315
PL 2080	48	1,286	288	11,695	40	1,680	72	1,828	55	1,320	306	6,941	809	24,750
PL 2100	0	0	24	1,081	0	0	0	0	0	0	182	3,937	206	5,018
PL 2110	0	0	0	0	0	0	0	0	0	0	0	0	0	0
SR 2010	96	2,252	552	21,270	320	10,400	160	3,614	116	3,232	312	6,496	1,556	47,264
Subtotal 2nd List	296	8,574	1,464	59,546	484	16,438	448	11,416	329	10,272	1,168	26,477	4,189	132,723
<b>3rd Priority Project List</b>														
PL 3010	1,360	37,470	1,600	64,686	870	31,030	520	12,669	520	15,920	1,082	23,437	5,952	185,212
PL 3020	64	2,152	208	8,902	184	6,768	80	2,442	320	10,600	100	2,764	956	33,628
PL 3040	248	7,161	368	15,116	84	3,148	144	3,510	104	3,440	446	10,057	1,394	42,432
PL 3050	1,140	35,865	2,060	85,598	320	11,040	0	0	495	14,560	252	5,540	4,267	152,603
PL 3060	160	5,395	224	9,645	16	480	0	0	128	3,696	98	2,294	626	21,510
PL 3070	128	3,368	158	6,481	64	2,208	88	2,369	136	3,792	48	784	622	19,002
PL 3080	1,052	27,377	664	25,397	370	13,020	560	13,900	344	9,408	498	10,741	3,488	99,843
PL 3090	688	17,985	312	12,324	200	6,960	160	3,914	180	4,800	350	6,785	1,890	52,768
PL 3100	448	11,783	148	5,964	84	2,808	160	3,914	78	2,196	424	8,875	1,342	35,540
PL 3110	60	1,310	128	5,232	32	1,088	0	0	40	1,280	36	1,020	296	9,930
PL 3120	0	0	0	0	0	0	0	0	40	1,400	406	8,677	446	10,077
PL 3130	208	6,127	80	3,422	32	1,040	64	1,760	104	3,488	390	8,577	878	24,414
PL 3140	264	6,531	436	16,469	40	1,680	320	7,807	84	2,528	248	6,888	1,392	41,903
PL 3150	48	1,524	92	4,096	0	0	48	1,465	40	1,400	414	9,257	642	17,742
PL 3160	80	2,472	208	9,152	100	3,440	96	2,639	80	2,800	234	5,341	798	25,844
PL 3170	48	2,254	116	4,878	0	0	160	4,399	186	6,612	314	7,437	824	25,580
Subtotal 3rd List	5,996	168,774	6,802	277,362	2,396	84,710	2,400	60,788	2,879	87,920	5,340	118,474	25,813	798,028
<b>Total Priority List</b>	<b>6,320</b>	<b>178,396</b>	<b>8,310</b>	<b>338,721</b>	<b>2,880</b>	<b>101,148</b>	<b>2,872</b>	<b>72,858</b>	<b>3,241</b>	<b>99,108</b>	<b>6,508</b>	<b>144,951</b>	<b>30,131</b>	<b>935,182</b>
<b>Total Hired Labor</b>	<b>20,356</b>	<b>563,446</b>	<b>21,774</b>	<b>885,804</b>	<b>6,508</b>	<b>232,738</b>	<b>7,312</b>	<b>183,538</b>	<b>7,011</b>	<b>211,736</b>	<b>19,582</b>	<b>440,848</b>	<b>82,543</b>	<b>2,518,110</b>

**Coastal Wetlands Planning, Protection and Restoration Act  
FY 1993 Budget Proposal  
Allocation of Cost and Associated Manpower**

Activity	Dept of Agriculture Soil Conservation Svc		Dept of the Army US Army Corps of Engns		Dept of Commerce (2 Agencies)		Dept of Interior (4 Agencies)		Environmental Protection Agency		State of Louisiana		SUMMARY	
	Mnhrs	Cost (\$)	Mnhrs	Cost (\$)	Mnhrs	Cost (\$)	Mnhrs	Cost (\$)	Mnhrs	Cost (\$)	Mnhrs	Cost (\$)	Mnhrs	Cost (\$)
<b>Other Costs</b>														
Graphics	-	2,600	-	900	-	-	-	-	1,400	-	616	-	-	5,516
Printing	-	1,800	-	1,000	-	-	-	-	-	-	616	-	-	3,416
Travel	-	21,500	-	22,540	-	37,000	-	-	57,910	-	42,247	-	-	181,197
Contracts	-	36,000	-	-	-	90,000	-	20,000	230,000	-	61,404	-	-	437,404
Other	-	20,000	-	-	-	30,000	-	-	-	-	20,616	-	-	70,616
<b>Total Other</b>		<b>81,900</b>		<b>24,440</b>		<b>157,000</b>		<b>20,000</b>		<b>289,310</b>		<b>125,499</b>		<b>698,149</b>
<b>Overhead:</b>		<b>236,647</b>		<b>690,928</b>		<b>133,615</b>		<b>102,639</b>		<b>52,934</b>		<b>73,645</b>		<b>1,290,408</b>
<b>Contingencies:</b>														<b>0</b>
<b>Total-Detailed Ping Schedule</b>	<b>20,356</b>	<b>881,993</b>	<b>21,774</b>	<b>1,601,172</b>	<b>6,508</b>	<b>523,353</b>	<b>7,312</b>	<b>306,177</b>	<b>7,011</b>	<b>553,980</b>	<b>19,582</b>	<b>639,992</b>	<b>82,543</b>	<b>4,506,667</b>
<b>Added Items</b>														
<b>Hired Labor</b>						48,423	11,520	265,913					11,520	314,336
<b>Other Costs</b>														
Graphics	-	-	-	-	-	-	-	0	-	-	-	-	-	0
Printing	-	-	-	-	-	-	-	0	-	-	-	-	-	0
Travel	-	-	-	-	-	5,715	-	13,842	-	-	-	-	-	19,557
Contracts	-	-	-	-	-	-	-	45,225	-	-	-	-	-	45,225
Other	-	-	-	-	-	-	-	9,600	-	-	-	-	-	9,600
<b>Total Other</b>		<b>0</b>		<b>0</b>		<b>5,715</b>		<b>68,667</b>		<b>0</b>		<b>0</b>		<b>74,382</b>
<b>Overhead:</b>						<b>15,628</b>		<b>97,282</b>						<b>112,910</b>
<b>Contingencies:</b>														
<b>Total-Added Items:</b>	<b>0</b>	<b>0</b>	<b>0</b>	<b>0</b>	<b>0</b>	<b>69,766</b>	<b>11,520</b>	<b>431,862</b>	<b>0</b>	<b>0</b>	<b>0</b>	<b>0</b>	<b>11,520</b>	<b>501,628</b>
<b>Total Budget Proposal</b>	<b>20,356</b>	<b>881,993</b>	<b>21,774</b>	<b>1,601,172</b>	<b>6,508</b>	<b>593,119</b>	<b>18,832</b>	<b>738,039</b>	<b>7,011</b>	<b>553,980</b>	<b>19,582</b>	<b>639,992</b>	<b>94,063</b>	<b>5,008,295</b>

COASTAL WETLANDS PLANNING, PROTECTION AND RESTORATION ACT

TASK FORCE MEETING  
OCTOBER 19, 1992

**PROPOSAL FOR MONITORING OF  
PRIORITY PROJECT LIST PROJECTS**

Mr. Greg Steyer of the Louisiana Department of Natural Resources will present a joint proposal by DNR and the U.S. Fish and Wildlife Service's National Wetlands Research Center for monitoring of CWPPRA projects.

October 14, 1992

A JOINT MONITORING PROPOSAL BY  
THE LOUISIANA DEPARTMENT OF NATURAL RESOURCES  
AND  
THE USFWS NATIONAL WETLANDS RESEARCH CENTER  
REGARDING MONITORING OF  
COASTAL WETLANDS PLANNING, PROTECTION, AND RESTORATION ACT  
PROJECTS

Background:

Monitoring of projects implemented from the Coastal Wetlands Planning, Protection, and Restoration Act (CWPPRA) restoration plan must provide:

- 1) "an evaluation of the effectiveness of each coastal wetlands restoration project in achieving long-term solutions to arresting coastal wetlands loss in Louisiana" PL 101-646 Sec. 303 (b)(4)(L); and
- 2) "a scientific evaluation of the effectiveness of the coastal wetlands restoration projects carried out under the plan in creating, restoring, protecting and enhancing coastal wetlands in Louisiana" PL 101-646 Sec. 303 (b)(7).

In order for the above mandates to be achieved, the monitoring efforts must generate results that can aid in determining the success or failure of existing projects, in the beneficial modification of existing projects, in the design of future projects, and most importantly, support future decisions on selection of projects proposed for creating, restoring, protecting and enhancing Louisiana's coastal wetlands. Comparisons of results among projects of similar type is the only way to determine which projects are most effective in achieving long-term solutions to arresting coastal wetlands loss in Louisiana.

The Monitoring Work Group was tasked by the P & E Subcommittee to resolve two issues essential to achieving the above mandates. The first issue was to develop a standardized monitoring protocol, and the second issue was to determine how this protocol would be implemented in a monitoring program, e.g., who would develop monitoring plans, collect field data, write reports, etc. The protocol was developed and reviewed by representatives from agencies, academia, and consulting firms, and their recommendations were incorporated into a final Monitoring Program Document. This

document is attached as Appendix A to this proposal.

Once the Monitoring Program Document was complete, the representatives of the various committees of the Task Force and the Monitoring Work Group discussed who would implement the monitoring program. Several options presented themselves as follows: 1) all monitoring would be the responsibility of the project sponsor; 2) all monitoring would be the responsibility of a single agency; 3) divide the monitoring among all the sponsoring agencies based upon expertise; 4) contract all monitoring with universities; and 5) contract all monitoring with a private consulting firm. The Monitoring Work Group discussed which options would meet the goals of consistency and technical credibility while at the same time being cost-effective and able to integrate with on-going data collection programs. The result of this discussion was that none of the options fit all of the requirements; therefore, they were all rejected.

During these discussions, the Louisiana Department of Natural Resources proposed that they be responsible for managing the monitoring program. After review and comments by the Monitoring Work Group and P & E Subcommittee, this proposal was refined to insure that the goals of consistency, credibility, and cost would be met. It was accepted and is presented here as a recommendation of the P & E Subcommittee.

#### Monitoring Responsibilities:

The Louisiana Department of Natural Resources, Coastal Restoration Division (LDNR/CRD) will be responsible for management of all monitoring activities of the CWPPRA including monitoring plan development, data collection and storage, statistical analysis, quality control, data interpretation and report generation. The United States Fish and Wildlife Service/National Wetlands Research Center (USFWS/NWRC) will be responsible for habitat mapping and GIS analysis (geographic information systems support) and other related monitoring as deemed appropriate by LDNR/CRD for each project. The LDNR/CRD and the USFWS/NWRC will jointly prepare reports for each CWPPRA project implemented & submit. These reports will be submitted to the P & E Subcommittee, Technical Committee and Task Force for final approval. ~~The P & E Subcommittee may direct the Monitoring Work Group to~~ provide a technical review of the project reports. The implementation of all monitoring plans will follow the protocols developed in the CWPPRA Monitoring Program Document. A Technical Advisory Group consisting of a federal project sponsor representative, state (LDNR/CRD) project sponsor representative, USFWS/NWRC representative, wetland ecologist and biostatistician will assist in the development of project specific monitoring plans. The P & E Subcommittee will be advised of all Technical Advisory Group meetings. Assistance by the other sponsoring agencies in the development of the monitoring plans will be available on a voluntary basis. These plans will be reviewed by the Monitoring Work Group and submitted to the P & E

Subcommittee, Technical Committee and Task Force for final approval (see attached flowchart). The independent wetland ecologist and biostatistician will also provide quality assurance and verification of data interpretations to ensure unbiased determinations of results.

Justification:

- As a 25% cost-share partner on all CWPPRA projects, the State of Louisiana is the common denominator across all projects. The LDNR/CRD can provide the consistency needed to evaluate and compare similar project types across the entire coastal zone of Louisiana. In addition, the natural resources affected by CWPPRA projects fall under the domain of the State of Louisiana and, therefore, these resources should be monitored and managed by the State of Louisiana.
- A program within the LDNR/CRD is already established to monitor projects developed within the State of Louisiana's Coastal Wetlands Conservation and Restoration Plans. This monitoring program was used as a template for the development of the CWPPRA Monitoring Program Document and, therefore, would be compatible or easily adaptable to any CWPPRA requirements.
- The USFWS/NWRC currently provides GIS support and mapping assistance to the CWPPRA Task Force and the LDNR/CRD for planning and monitoring. The USFWS/NWRC program provides a mechanism for organizing and distributing GIS data generated for CWPPRA activities. This program, combined with the LDNR/CRD monitoring program will establish a long term mechanism to properly manage, archive, transfer, and distribute information.
- The LDNR/CRD currently develops reports for the Louisiana Legislature one year after project completion and updates these reports yearly. This coincides with the requirement of the Task Force to report to the United States Congress on the effectiveness of all implemented projects not less than three years after the completion and submission of the restoration plan, and at least every three years thereafter. Combined with the graphical, editorial and technical support of the USFWS/NWRC, the LDNR/CRD can complete all reporting requirements as specified in the CWPPRA.

Limits on Monitoring Variables:

Monitoring budgets for CWPPRA projects will be developed based on the minimum monitoring variables necessary to provide sufficient information to determine if project goals and objectives are being

met. A mechanism for selecting variables to be monitored is provided in the CWPRA Monitoring Program Document. However, due to the limited availability of funds, all of the highest priority variables cannot be monitored. The Monitoring Work Group determined by project type which variables were essential in judging project success or failure and which variables may need to be monitored based on project objectives and possible impacts. They are as follows:

<u>Project Type</u>	<u>Essential Variables</u>	<u>Additional Variables or Substitutions</u>
Freshwater Diversion	Habitat Mapping Salinity Water Level Vegetation	Fisheries Discharge Precipitation Wind Speed/Direction
Marsh Management	Habitat Mapping Salinity Water Level Vegetation Fisheries	Sediment Accretion
Hydrologic Restoration	Habitat Mapping Salinity Water Level Vegetation	Fisheries Sediment Accretion Water/Sediment Quality
Sediment Diversion	Habitat Mapping Bathymetry/ Topography	Vegetation Suspended Sediment Discharge
Vegetative Planting	Vegetation Shoreline Markers	Habitat Mapping Salinity
Beneficial Use of Dredge Material	Habitat Mapping Vegetation Bathymetry/ Topography	Shoreline Markers
Barrier Island Restoration	Habitat Mapping Vegetation Bathymetry/ Topography	Shoreline Markers
Sediment/Nutrient Trapping	Habitat Mapping Vegetation	Suspended Sediment Bathymetry Nutrients
Shoreline Protection	Habitat Mapping Shoreline Markers	Vegetation Bathymetry/ Topography



The essential variables illustrate those variables which generally would be measured for each project type. However, project-specific goals and objectives may dictate that some of these variables may be non-essential. This list does not preclude other variables from being monitored, if determined necessary by the Technical Advisory Group. ~~Fisheries monitoring will be conducted, provided that, to reduce monitoring costs~~ ~~monitoring costs~~, full use be made of existing research findings regarding the effects of water control structures on ~~estuarine fish movement~~.

Limits on Monitoring Costs:

*Diff. Budget  
 what will that tell us that we already know.*

The LDNR/CRD has reviewed the goals and objectives of all 18 first priority list projects and developed monitoring cost estimates for each. The monitoring budgets on 20 completed State of Louisiana wetland restoration projects as well as the monitoring priorities and costs identified within the CWPPRA Monitoring Program Document were also reviewed. This review determined that monitoring costs cannot be set at a fixed percentage of project cost, due to varying project goals and objectives and project sizes. It did, however, provide enough information to estimate an average annual cost (below) necessary to adequately monitor each type of wetland restoration project.

Average annual monitoring costs for each project type will not exceed the following:

<u>Project Type</u>	<u>Average Annual Cost</u>
Freshwater Diversion	\$ 25,875
Marsh Management	\$ 25,875
Hydrologic Restoration	\$ 25,875
Sediment Diversion	\$ 8,625
Vegetative Planting	\$ 4,325
Beneficial Use of Dredged Material	\$ 4,325
Barrier Island Restoration	\$ 4,325
Sediment/Nutrient Trapping	\$ 4,325
Shoreline Protection	\$ 2,150

Freshwater diversion, marsh management, and hydrologic restoration project costs can be prorated based on project size as follows:

- less than 1,000 acres = 60%
- 1,000 - 5,000 acres = 70%
- 5,000 - 15,000 acres = 80%
- 15,000 - 60,000 acres = 100%

In addition, those projects that require continuous data recorders for active management will also be funded at 100%, regardless of project size.

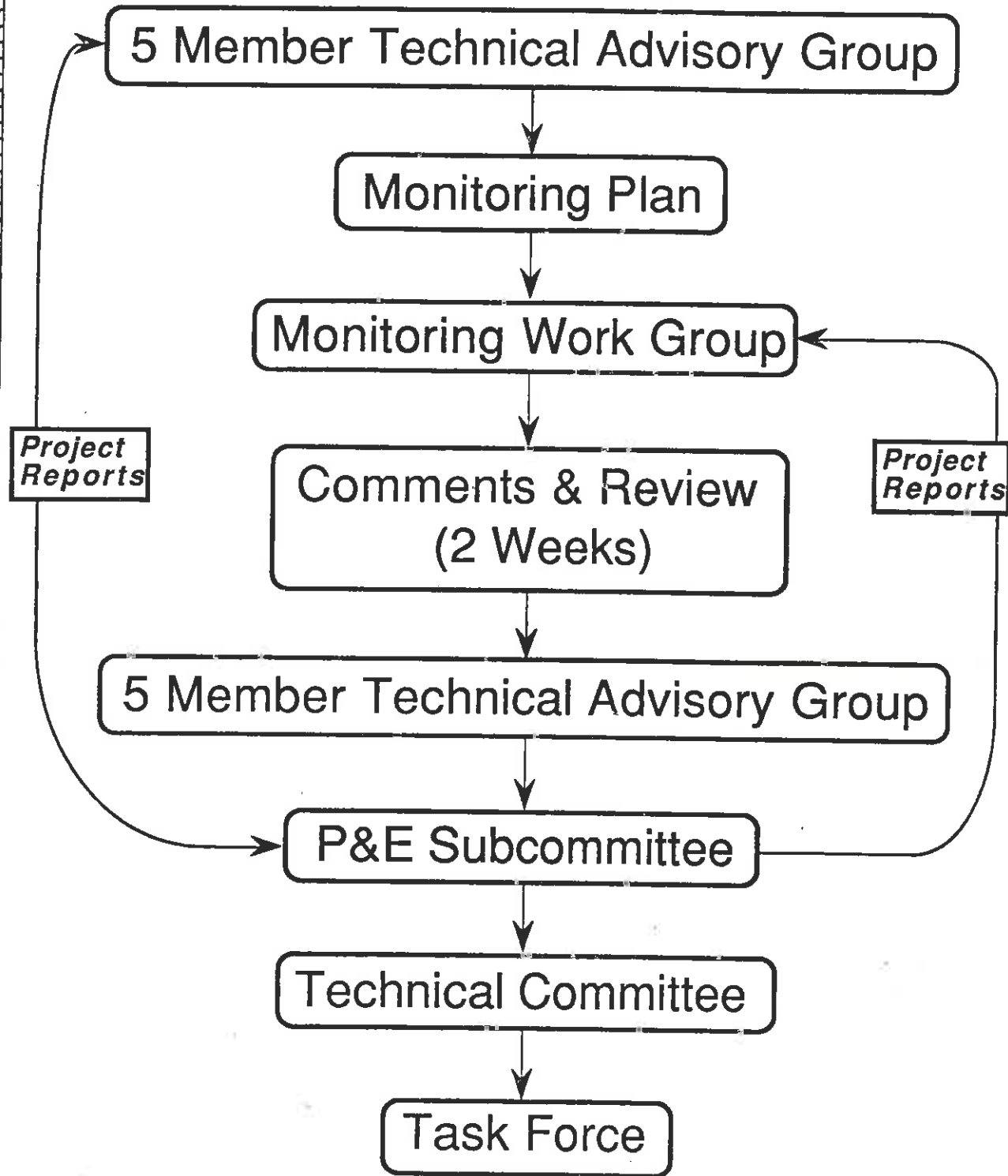
Monitoring costs for any given project will not exceed 125% of the original, fully-funded monitoring cost estimate.

Monitoring costs for any given project will not exceed 50% of the fully-funded project cost.

These costs were derived based on a number of assumptions regarding sample number, sample frequency, project size, and the monitoring protocol utilized. Costs were derived independently and without consideration of existing monitoring stations. Average annual monitoring costs will decrease over time as a greater number of projects are implemented.

Project-specific exemptions to the above monitoring costs will be mutually agreed upon by the State of Louisiana and the Federal cost-share sponsor. Monitoring costs will be included as a component of the fully-funded project cost using the above average annual monitoring cost guidelines. In situations where monitoring costs must be added to a previously approved project, such an addition will not cause the previously approved fully-funded project cost to be exceeded by more than 25%.

# Monitoring Implementation Protocol



COASTAL WETLANDS PLANNING, PROTECTION AND RESTORATION ACT

TASK FORCE MEETING  
OCTOBER 19, 1992

PROPOSAL FOR DEVELOPMENT OF A  
HYDRAULIC MODEL OF THE COASTAL ZONE

Dr. ~~Suhayda~~ will request assistance in the refinement of an existing hydraulic model for large-scale evaluation of projects in the coastal zone.

*Model:  
Already applied  
to several other projects in  
coastal LA*

COASTAL WETLANDS PLANNING, PROTECTION AND RESTORATION ACT

TASK FORCE MEETING  
OCTOBER 19, 1992

PROPOSED 2ND PRIORITY PROJECT LIST

**Technical Committee Recommendation:**

Approve the 2nd Priority Project List as displayed on the following table.

Coastal Wetlands Planning, Protection and Restoration Act

2nd Priority Project List  
As Proposed by the Technical Committee

13 Oct 92

			Avg Annual Cost/AAHU (\$/AAHU)	Fully Funded Cost (\$)	Cumulative Cost (\$)
Freshwater Bayou	Merm	SCS	126	2,643,000	2,643,000
Bayou Sauvage	Pont	FWS	186	1,463,000	4,106,000
Clear Marais	Calc/Sab	SCS	193	1,733,000	5,839,000
Caernarvon Outfall Mgmt	Bret Sd	SCS	414	2,416,000	8,255,000
Mud Lake	Calc/Sab	SCS	463	2,630,000	10,885,000
Point Au Fer	Terr	NMF	697	1,123,000	12,008,000
Big Island Mining (Incrmnt 1)	Atch	NMF	935	4,161,000	16,169,000
Jonathan Davis Wetland	Bar	SCS	886	3,399,000	19,568,000
Fritchie Marsh	Pont	SCS	1,139	2,748,000	22,316,000
Hwy 384	Calc/Sab	SCS	1,225	1,032,000	23,348,000
Boston Canal	Teche/Verm	SCS	1,374	1,363,000	24,711,000
Brown's Lake	Calc/Sab	SCS	2,150	2,949,000	27,660,000
W Belle Pass	Terr	COE	2,327	4,880,000	32,540,000
Isle Dernieres (Ph 1)	Terr	EPA	6,188	6,894,000	39,434,000

Projects Deferred:

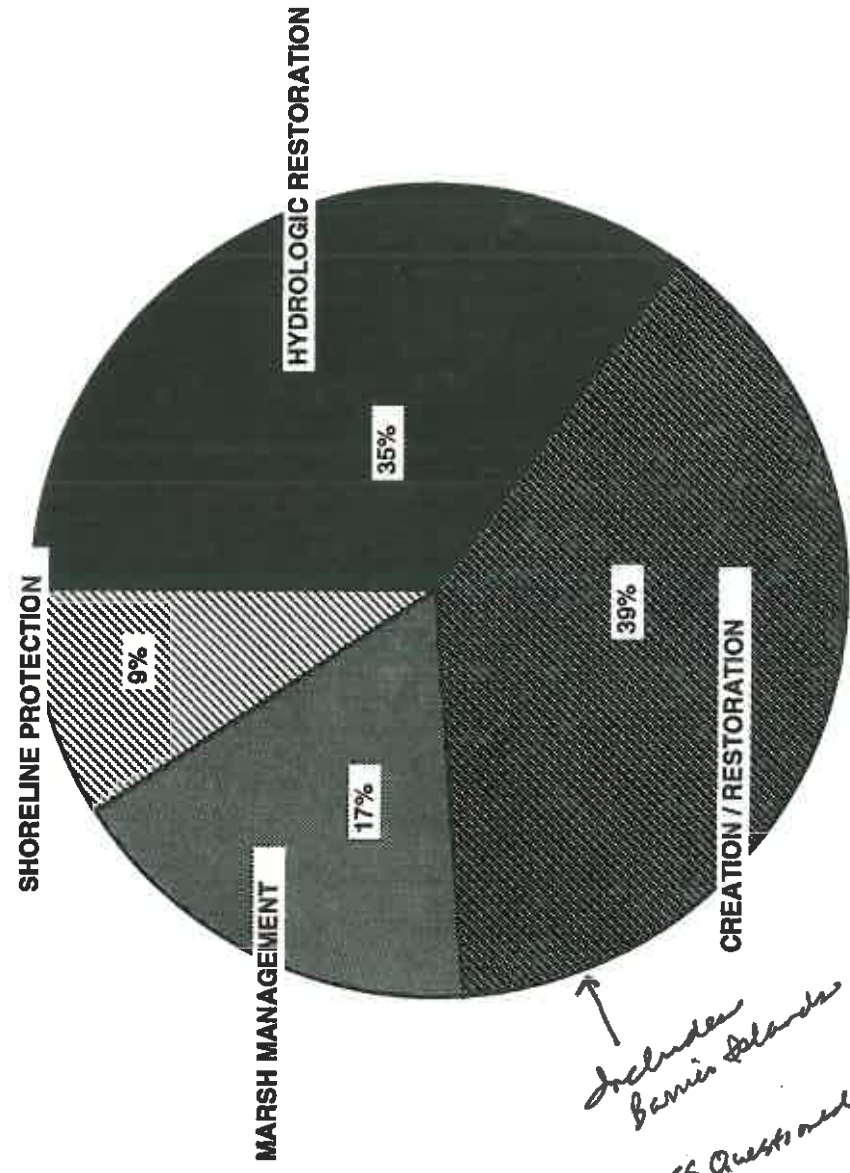
Humble Canal	Merm	SCS	89	999,000
Atch Sed Del	Atch	NMF	112	894,000
Hwy 90 to GIWW	Bar	SCS	211	3,819,000
Sawmill Canal	Mermentau	SCS	534	1,174,000
Sediment Mining	Miss Delta	COE	1,096	1,358,000

AAHU: Average Annual Habitat Units

Note: Fully funded costs have not been adjusted for recent changes in monitoring costs for some projects.

# Distribution of PPL2 Funds by Project Type

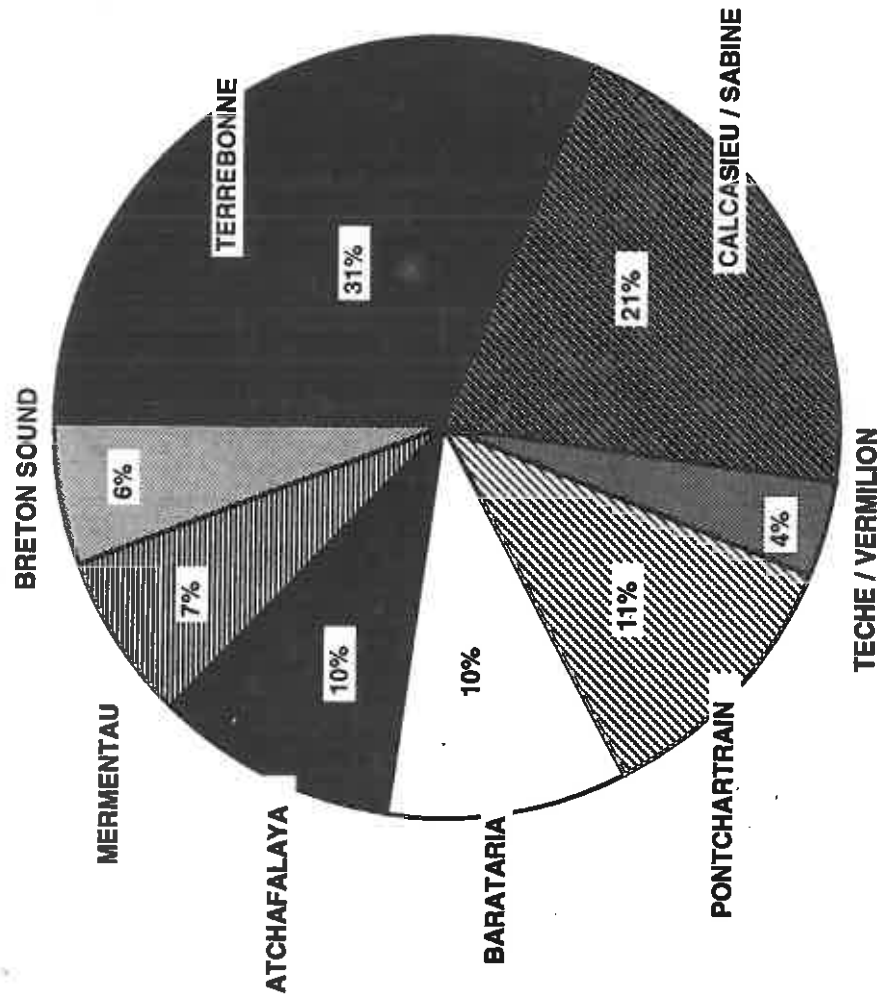
## Technical Committee Recommendation



↑  
*Includes  
Barnier Islands  
NMFS Questioned designation*

# Distribution of PPL2 Funds by Basin

## Technical Committee Recommendation





Candidate Projects for 2nd Priority Project List

24 Sep 92

Number	Project	Basin	Sponsor	Avg Annual Cost/AAHU (\$/AAHU)	AAHU's	Average Annual Acres	Fully Funded Cost (\$)	Avg Annual Cost (\$)	Cumulative Fully Funded Cost (\$)
PME-15	Humble Canal	Mermentau	SCS	89	674	383	999,000	60,300	999,000
PAT-2	Atch Sediment Del.	Atchafalaya	NMF	112	777	1,267	894,000	87,000	1,893,000
ME-4/XME-21	Freshwater Bayou	Mermentau	SCS	126	1,611	523	2,643,000	203,600	4,536,000
PAT-2	Atch Sed (Incr 2)	Atchafalaya	NMF	128	818	1,417	1,045,000	104,300	5,581,000
PPO-52A	Bayou Sauvage	Pontchartrain	FWS	186	584	841	1,463,000	108,500	7,044,000
PCS-27	Clear Marais	Calc/Sabine	SCS	193	909	677	1,733,000	175,100	8,777,000
BA-6	Hwy 90 to GIWW	Barataria	SCS	211	1,562	1,271	3,819,000	329,800	12,596,000
PTE-22/24	Pt Au Fer (Incr 1)	Terrebonne	NMF	249	122	65	323,000	30,400	12,919,000
MIR-2	Sediment Fencing	Miss Delta	COE	332	883	1,001	3,078,000	293,300	15,997,000
BS-3A	Caernarvon Outfall	Breton Sound	SCS	414	504	448	2,416,000	208,900	18,413,000
PCS-24	Mud Lake	Calc/Sabine	SCS	463	487	798	2,630,000	225,500	21,043,000
TV-4	Cote Blanche	Teche/Verm	SCS	469	1,076	1,171	5,044,000	505,100	26,087,000
PME-14	Sawmill Canal	Mermentau	SCS	502	166	196	1,174,000	83,400	27,261,000
PCS-25	Hwy 384 (Incr 1)	Calc/Sabine	SCS	596	45	57	552,000	26,800	27,813,000
TV-5	Marsh Island (Incr 1)	Teche/Verm	COE	596	383	210	2,471,000	228,200	30,284,000
PTE-22/24	Point Au Fer	Terrebonne	NMF	697	158	196	1,123,000	110,100	31,407,000
XAT-7	Big Island Mining	Atchafalaya	NMF	882	638	1,349	5,302,000	562,500	36,709,000
<del>PBA-35</del>	<del>Jenathan Davis</del>	<del>Barataria</del>	<del>SCS</del>	<del>886</del>	<del>485</del>	<del>255</del>	<del>3,399,000</del>	<del>429,500</del>	<del>40,188,000</del>
PAT-2	Atch Sed (Incr 1)	Atchafalaya	NMF	147	488	675	777,000	71,500	40,885,000
XAT-7	Big Island (Incr 1)	Atchafalaya	NMF	935	467	944	4,161,000	436,700	45,046,000
XAT-7	Big Island (Incr 2)	Atchafalaya	NMF	1,046	665	1,459	6,564,000	695,400	51,610,000
PCS-25	Hwy 384 (Incr 2)	Calc/Sabine	SCS	1,063	49	50	925,000	52,100	52,535,000
PMR-8	Sediment Mining	Miss Delta	COE	1,096	127	160	1,358,000	139,200	53,893,000
PBS-6	Crevasse Bohemia	Breton Sound	COE	1,138	149	191	1,685,000	169,600	55,578,000
P0-6	Fritchie	Pontchartrain	SCS	1,139	201	546	2,748,000	228,900	58,326,000
XME-22	Pecan Island	Mermentau	NMF	1,143	153	29	1,712,000	174,900	60,038,000
CS-1A	Peveto to Holly	Calc/Sabine	COE	1,155	615	1,419	7,307,000	710,400	67,345,000
PO-6	Fritchie (Incr 1)	Pontchartrain	SCS	1,177	192	518	2,660,000	225,900	70,005,000

Project Candidates for 2nd Priority Project List

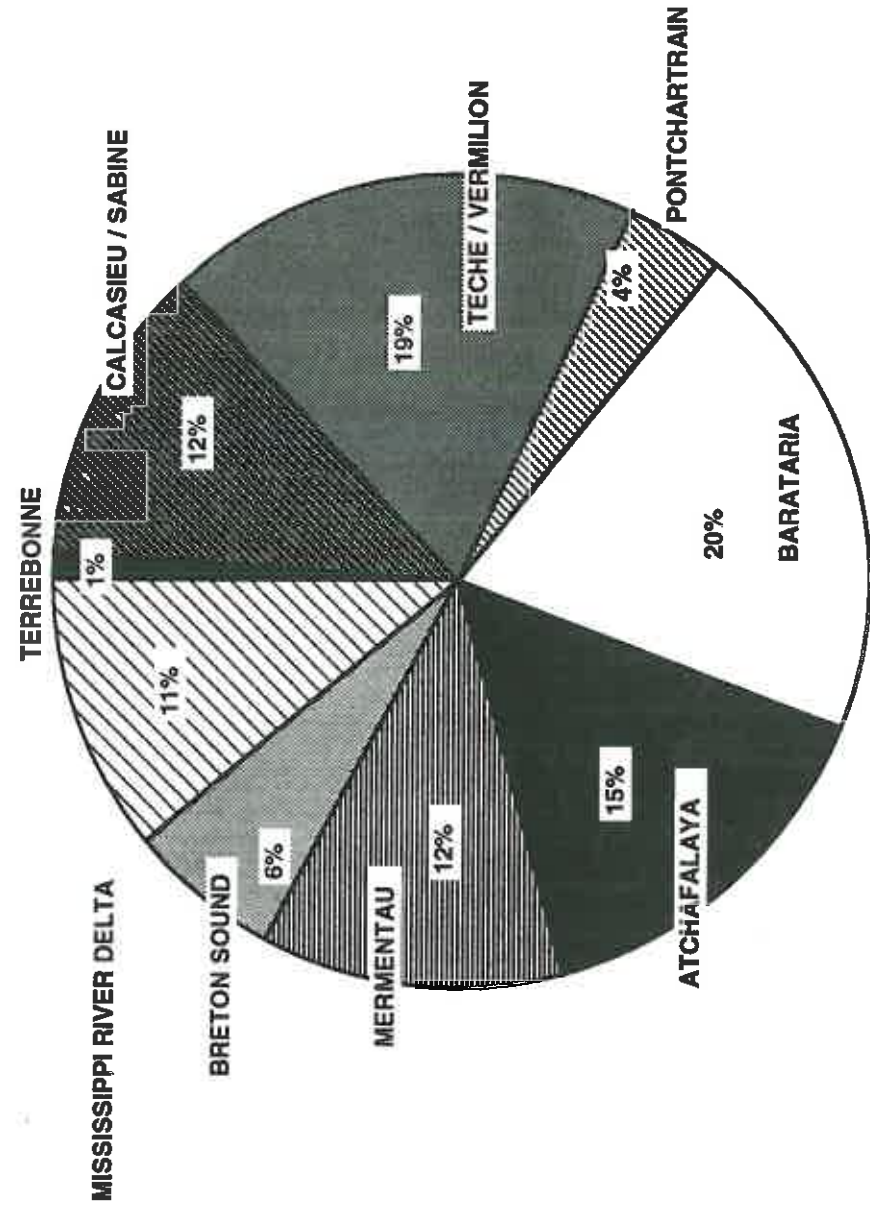
(p. 2)

24 Sep 92

Number	Project	Basin	Sponsor	Avg Annual		AAHU's	Average Annual Acres	Fully Funded Cost (\$)	Avg Annual Cost (\$)	Cumulative Fully Funded Cost (\$)
				Cost/AAHU (\$/AAHU)	Cost (\$)					
PCS-25	Hwy 384	Calc/Sabine	SCS	1,225	51	79	1,032,000	62,500	71,037,000	
PMR-8	Sed Mining (Incr 1)	Miss Delta	COE	1,371	69	79	972,000	94,600	72,009,000	
PTV-18/ TV-9	Boston Canal	Teche/Verm	SCS	1,374	78	199	1,363,000	107,200	73,372,000	
PMR-8	Sed Mining (Incr 2)	Miss Delta	COE	1,686	181	240	2,933,000	305,200	76,305,000	
PTV-19	Teche Verm Sed	Teche/Verm	NMF	1,713	45	21	822,000	77,100	77,127,000	
PTE-27	W Belle Pass (Incr1)	Terrebonne	COE	1,721	199	219	3,265,000	342,500	80,392,000	
CS-9	Brown's Lake	Calc/Sabine	SCS	2,150	121	152	2,949,000	260,100	83,341,000	
PTE-27	W Belle Pass	Terrebonne	COE	2,327	216	336	4,880,000	502,600	88,221,000	
PO-11	Cutoff Bayou	Pontchartrain	SCS	2,576	41	54	1,415,000	105,600	89,636,000	
FMR-4	Tiger Pass	Miss Delta	COE	3,462	125	188	6,955,000	432,700	96,591,000	
PTE-22/24	Pt Au Fer (Incr 2)	Terrebonne	NMF	4,467	24	131	1,055,000	107,200	97,646,000	
XTE-43	Falgout (w/o Tran)	Terrebonne	EPA	5,061	79	319	3,738,000	399,800	101,384,000	
TV-5	Marsh Island	Teche/Verm	COE	5,077	267	699	12,983,000	1,355,500	114,367,000	
XTE-41	Dernieres (Phase 1)	Terrebonne	EPA	6,188	120	133	6,894,000	742,500	121,261,000	
XAT-6	Atch Booster Pump	Atchafalaya	COE	6,241	54	80	3,054,000	337,000	124,315,000	
XTE-41	Dernieres (all)	Terrebonne	EPA	6,961	548	736	33,188,000	3,814,900	157,503,000	
XTE-42	Houma Canal Lock	Terrebonne	COE	7,366	1,499	1,518	122,545,000	11,041,900	280,048,000	
PBA-38	Shell Island (all)	Barataria	EPA	8,096	291	221	20,169,000	2,355,900	300,217,000	
PBA-38	Shell Island (Ph I)	Barataria	EPA	12,505	91	80	10,689,000	1,138,000	310,906,000	
PO-9	Violet	Pontchartrain	COE	12,978	194	84	25,573,000	2,517,700	336,479,000	
XTE-43	Falgout (w/ Tran)	Terrebonne	EPA	13,070	79	319	9,564,000	1,032,500	346,043,000	
BA-13	Hero Canal	Barataria	COE	14,813	67	169	10,004,000	992,500	356,047,000	
PBS-5	Fiddler Pt. (Phase I)	Breton Sound	EPA	20,063	99	116	17,563,000	1,986,200	373,610,000	
PBS-5	Fiddler Pt. (all)	Breton Sound	EPA	20,755	322	383	55,115,000	6,683,000	428,725,000	
PBS-13	Oyster Reef Demo	Breton Sound	NMF	36,400	1	2	374,000	36,400	429,099,000	
XBA-50	Nairn Wetland	Barataria	EPA	66,944	16	281	9,732,000	1,071,100	438,831,000	

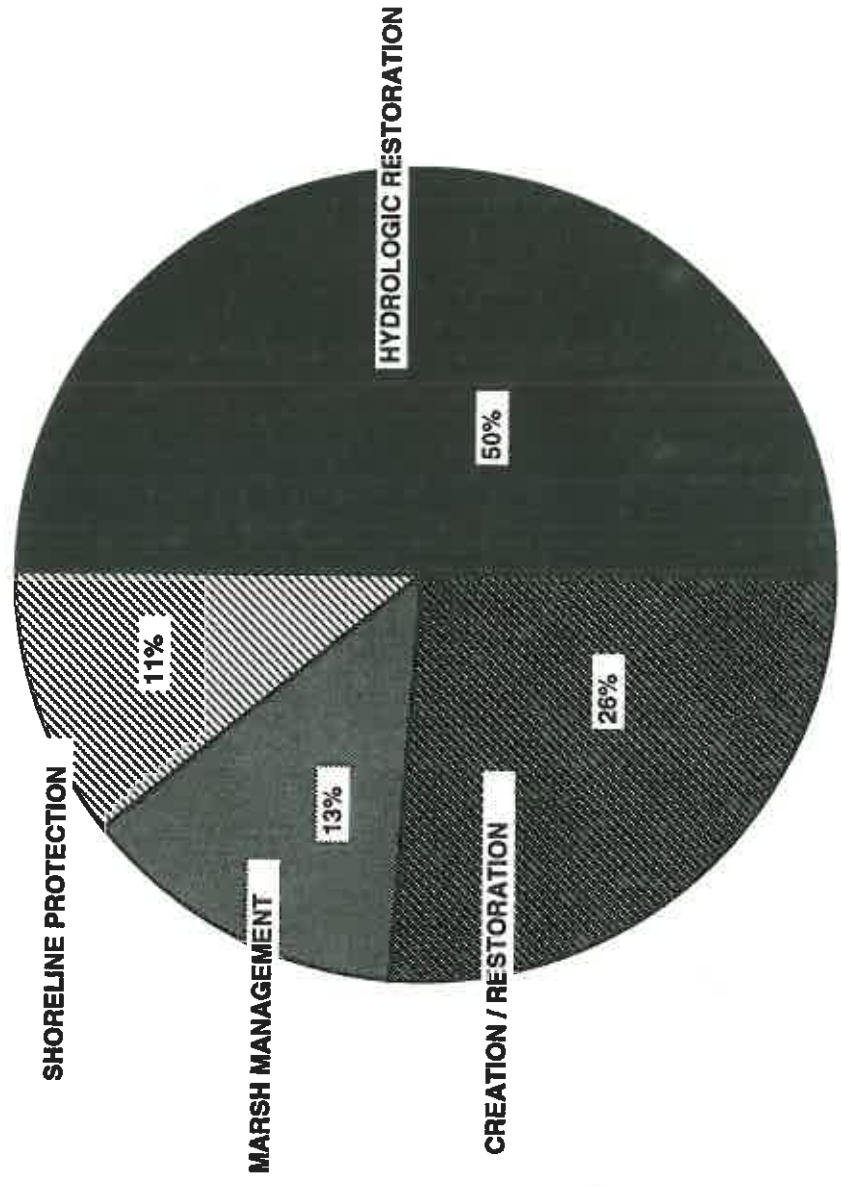
# Distribution of PPL2 Funds by Basin

## Primary Criterion Ranking



**Distribution of PPL2 Funds by Project Type**

**Primary Criterion Ranking**



## **Background Information and Justification for the 2nd Priority Project List**

### Introduction

The Coastal Wetlands Planning, Protection and Restoration Act (CWPPRA) project evaluation process incorporates a primary project ranking procedure based on Average Annual Cost/Average Annual Habitat Unit ratios. Some 300-400 projects were initially reviewed and screened by the Planning and Evaluation Subcommittee through nine Basin Planning Teams consisting of members from the CWPPRA participating agencies, local interests, and the scientific community. The Basin Teams recommended approximately four projects from each of the nine coastal hydrologic basins for consideration as candidate projects for the 2nd Priority Project List. Initial screening performed by the Basin Teams included careful consideration of all recommended candidate projects in light of the developing restoration plan strategies for each particular basin. This important step ensured the selection of candidate projects which were consistent with the strategies being formulated in each basin for the state-wide Coastal Restoration Plan.

The aforementioned process resulted in the selection of thirty-seven (37) candidate projects. These projects were then analyzed in greater detail through the Wetland Value Assessment (WVA) procedure to accurately assess project benefits. Detailed cost were developed by the assigned lead federal agency and evaluated by an interagency Engineering Work Group for consistency.

A set of secondary criteria were also reviewed and applied to each project; these criteria included a review of the comment record obtained through a series of public meetings held in June 1992. The summation of both primary and secondary criteria evaluations, which included public comment, provided the basis for the recommended 2nd Priority Project List. Additional justifications for project ranking are provided below for specific projects.

Justifications for Deferring or Remanding Projects to the Comprehensive Restoration Plan.

Atchafalaya Sediment Delivery (PAT-2) (Deferred)

The Planning and Evaluation Subcommittee and Technical Committee supported the need for only one project within the Atchafalaya Basin, which is actively accreting. The consensus of these groups, in accordance with the intent of the Act, was to fund critical projects in basins where coastal wetland losses were the greatest. PAT-2 is a good project that would build marshes in the eastern Atchafalaya Delta, but another Atchafalaya Basin project, known as the Big Island project, would serve a more critical need. The Big Island project would help correct blockage of Atchafalaya River sediment caused by the construction of a large dredged material island in the western delta, thus rectifying a man-made problem. Sediment placed to the east of the channel may be carried by westward currents into the navigation channel, resulting in increased maintenance dredging costs.

The additional distribution of Atchafalaya River flows into western Terrebonne Parish may also exacerbate existing high water conditions in the upper Penchant Basin. The removal of excess water in this basin needs to be addressed and coordinated with additional sediment and freshwater flows associated with the PAT-2 project. The Big Island project would channel fresh water and sediment westward into the Teche/Vermilion Basin, which would assist in off-setting land loss and shoreline erosion in that basin.

Humble Canal (PME-15) (Deferred)

This project involves the rehabilitation of existing structures, and the Planning and Evaluation Subcommittee and Technical Committee determined that more critical needs exist in other areas at this time. This project was deferred in favor of funding projects in areas with more critical needs.

#### Hwy 90 to GIWW Hydrologic Restoration (BA-6) (Deferred)

BA-6 is a good project, but it is currently at a lower funding priority than projects in areas which are experiencing greater land loss and coastal erosion and, therefore, need immediate action. Last year's Priority Project List recommended construction of the GIWW to Clovelly Hydrologic Restoration project (BA-2), which is located to the south of the BA-6 project, and will provide some protection to the BA-6 area. The Davis Pond Freshwater Diversion will also freshen this area and therefore reduce the risk of saltwater intrusion in the northern portion of the Barataria Basin.

#### Point Au Fer Increment No. 1 (PTE-22/24) (Remanded to Restoration Plan)

Increment No. 1 includes several plugs in pipeline canals in the southeastern portion of Pt. Au Fer Island. Hurricane Andrew caused the southwestern shoreline at increment No. 2 to break through to the Gulf of Mexico. For this reason, the Planning and Evaluation Subcommittee and Technical Committee decided to include both increments in the final recommended project.

#### Cote Blanche Hydrologic Restoration (TV-4) (Remanded to Restoration Plan)

Land loss in the Teche/Vermilion Basin is not as great as in other basins (*i. e.*, Barataria and Terrebonne), and, therefore, immediate project priorities are greater in the basins experiencing higher loss rates.

A high priority problem area identified during the public scoping process was the shoreline erosion along the entire northwestern shoreline of Vermilion Bay. The application of a successful project in this critical area of the basin addresses the key basin strategy and will provide useful information in expanding shoreline protection applications to other portions of the basin. Thus the Boston Canal Project (PTV-18/TV-9) was recommended over the Cote Blanche Project at this time.

#### Pass Au Loutre Sediment Fencing (MR-2) (Remanded to Restoration Plan)

The La. Dept. of Wildlife and Fisheries is presently funding some deltaic splay and fencing projects with mitigation and State Coastal Restoration funds. The project costs were relatively high (over \$3 million), and projects in other basins with more critical loss problems took precedence over this project.

#### Sawmill Canal Hydrologic Restoration (PME-14) (Deferred)

This project involves the rehabilitation of existing structures, and both the Planning and Evaluation Subcommittee and the Technical Committee determined that more critical needs exist in other areas at this time. Thus, this project was deferred in favor of funding projects in areas with more critical needs.

#### Hwy 384 Increment No. 1 (PCS-25)

This increment should be withdrawn because The scope of the Hwy 384 project is clearly defined by existing hydrologic barriers such as ridges and roads. Attempts to break this project down into smaller increments diminished our ability to develop a comprehensive water management plan, which includes diversion of fresh water, nutrients, and some sediment from the GIWW to the north of the project.

#### Marsh Island Increment 1 (TV-5)

Except in "hot spot" areas, the Teche/Vermilion basin is not having the land loss problems that other basins are experiencing (*i.e.*, Terrebonne, Barataria, and Calcasieu/Sabine). The Boston Canal project was chosen over both the Marsh Island and Cote Blanche projects because Boston Canal addresses a shoreline erosion problem along 16 miles of northern Vermilion Bay. This shoreline erosion has been cited as one of the major problems in the Teche/Vermilion basin. The Boston Canal project has potential future applications in this basin and others in the Louisiana coastal zone due to its large vegetational planting component (16 miles of smooth cordgrass). The



public comment record also indicated very high local and state support for the Boston Canal project.

#### Mississippi River Sediment Mining (PMR-8) (Deferred)

This is a good project, but the Planning and Evaluation Subcommittee and the Technical Committee decided to recommend that it be deferred. This basin has an abundance of resources provided by the river and its sediment load, and projects to utilize these resources have been built in the past (such as delta splays), with others planned for the future, either as mitigation or as part of the State's restoration plan. The potential for using the river's resources will remain for the foreseeable future, and it was decided that the present CWPPRA funds could be better used in basins which are experiencing greater land loss (*i. e.* , Terrebonne and Barataria Basins).

#### Justifications for Projects Added to the Second Priority List

##### Big Island Mining Increment No. 1 (XAT-7)

This increment is less costly than the original project, which involved a 650-ft. channel through Big Island vs. the 500-ft. width of Increment No. 1. The reasons for including Big Island rather than Atchafalaya Sediment Delivery (PAT-2) are discussed above under PAT-2.

##### Fritchie Marsh Hydrologic Restoration (PO-6)

Maintaining the Lake Pontchartrain fringing marsh system is a key feature of the Pontchartrain Basin in the restoration plan. This is the first project which addresses the need to restore and protect these fragile fringing marshes. The project incorporates freshwater and sediment introduction from the West Pearl River to the east to protect the marshes southeast of Slidell from saltwater intrusion via Lake Pontchartrain and the Rigolettes.

#### Hwy 384 Hydrologic Restoration (PCS-25)

This project provides an opportunity for freshwater, nutrient and sediment introduction into a critical marsh area in the northeastern portion of Calcasieu Lake where opportunities are limited. The Calcasieu/Sabine Basin restoration strategy involves reducing saltwater intrusion and tidal scour caused by the Calcasieu Ship Channel and other navigation channels.

#### Brown Lake Marsh Management (CS-9)

This project is a key element for the Calcasieu/Sabine Basin plan overall strategy to reduce land loss by reducing saltwater intrusion and tidal scour in critical areas along the "perimeter" of the basin. Saltwater intrusion and tidal scour caused by the construction of the Calcasieu Ship Channel have caused the loss of 90% of the Brown Lake marshes. The project offers the potential for future restoration in the form of beneficial use of dredged material from the Calcasieu Ship Channel. The management plan will allow more efficient use of this material to create marsh by containing it within management levees.

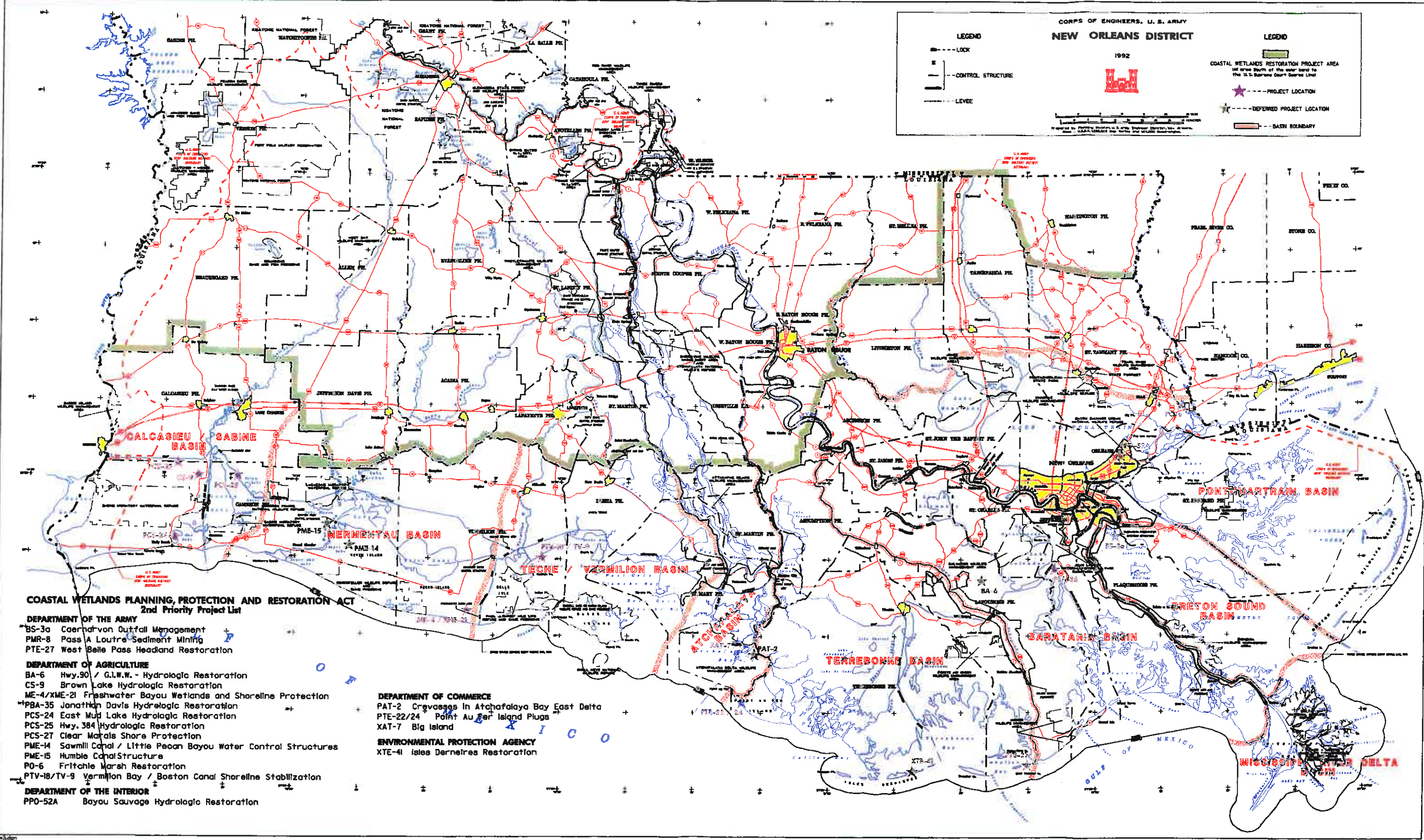
#### West Belle Pass (PTE-27)

This project involves the creation of marsh and the backfilling of existing pipeline canals, both of which are aggressive strategies in an area of critical need. West Belle Pass is located on the western portion of the Fourchon headland, which protects the marshes to the north from erosion from the gulf. This area is on the boundary of the Barataria and Terrebonne basins, which are experiencing greater land loss than most other basins in coastal Louisiana.

#### Isle Dernieres Phase I (XTE-41).

This is a continuation of the demonstration project of the first Priority Project List, approved in 1991. This project will involve different barrier island restoration

materials and techniques in an effort to show which techniques are most cost effective for future projects.



**CORPS OF ENGINEERS, U. S. ARMY**  
**NEW ORLEANS DISTRICT**  
1992

**LEGEND**

- LOCK
- CONTROL STRUCTURE
- LEVEE

**LEGEND**

- PROJECT LOCATION
- DEFERRED PROJECT LOCATION
- BASIN BOUNDARY

Prepared by: Planning, Studies, U.S. Army, Engineer District, New Orleans, Louisiana  
Scale: 1:500,000 (Not to Scale)

**COASTAL WETLANDS PLANNING, PROTECTION AND RESTORATION ACT**  
**2nd Priority Project List**

- DEPARTMENT OF THE ARMY**
- BS-3a Caernarvon Outfall Management
  - PMR-8 Pass A Loutre Sediment Mining
  - PTE-27 West Belle Pass Headland Restoration
- DEPARTMENT OF AGRICULTURE**
- BA-6 Hwy.90 / G.L.W.W. - Hydrologic Restoration
  - CS-9 Brown Lake Hydrologic Restoration
  - ME-4/XME-21 Freshwater Bayou Wetlands and Shoreline Protection
  - PBA-35 Jonathan Davis Hydrologic Restoration
  - PCS-24 East Mud Lake Hydrologic Restoration
  - PCS-25 Hwy. 384 Hydrologic Restoration
  - PCS-27 Clear Marsh Shore Protection
  - PME-14 Sawmill Canal / Little Pecon Bayou Water Control Structures
  - PME-15 Humble Canal Structure
  - PO-6 Fritchle Marsh Restoration
  - PTV-18/TV-9 Vermilion Bay / Boston Canal Shoreline Stabilization
- DEPARTMENT OF THE INTERIOR**
- PPO-52A Bayou Sauvage Hydrologic Restoration

- DEPARTMENT OF COMMERCE**
- PAT-2 Crevasses In Atchafalaya Bay East Delta
  - PTE-22/24 Point Au Fer Island Plugs
  - XAT-7 Big Island
- ENVIRONMENTAL PROTECTION AGENCY**
- XTE-41 Isles Dernieres Restoration

COASTAL WETLANDS PLANNING, PROTECTION AND RESTORATION ACT

TASK FORCE MEETING  
OCTOBER 19, 1992

**1st PRIORITY PROJECT LIST STATUS REPORT**

A one page status report on the First Priority List Projects is included for each Task Force meeting.

19 Oct 92

Coastal Wetlands Planning, Protection and Restoration Act

Status of 1st Priority Project List

Project	Sponsor	CSA		Design		Permits		Construction		Cost (x \$1,000)		Percent Difference
		Scheduled Completion May 92	Status	Scheduled Completion	Status	Scheduled Completion	Status	Start	Completion	Original	Current	
Fourchon	NMFS		BS,IP							252	252	0.0
BA-2/ GIWW-Clovelly	SCS	Mar 92	TC	Aug 92	TC-1st contract	Dec 91	TC	Dec 92	Apr 95	8,145	8,145	0.0
Cameron Creole	USFWS		IP	Aug 92	IP,OS	Apr 92	TC	Dec 92	Mar 93	502	477	-5.0
Bayou Sauvage	USFWS	Mar 92	BS,IP	May 93	IP,OS		IP	Aug 93	Aug 94	1,105	1,156	4.6
Turtle Cove	USFWS		Removed from list;		construction taken over by State of Louisiana							
Sabine Refuge	USFWS		IP	Mar 93	IP,OS	Apr 92	TC	Jun 93	Jun 94	4,844	4,765	-1.6
Vegetative Plantings	SCS	Mar 92	TC	Apr 92	TC	Oct 92	IP,BS	Jan 93	Jan 94	848	848	0.0
West Bay Diversion	COE	Feb 93	IP,BS	Apr 93	IP,BS	Feb 94	IP,BS	Jul 94	Oct 94	8,517	8,517	0.0
Barataria Bay WW	COE	Oct 93	OS	Feb 94	IP,OS	Oct 93	OS	Jun 94	Aug 94	1,625	1,625	0.0
Lower Bayou LaCache	NMFS	May 92	BS,IP	Jan 93	OS	Aug 92		Mar 93	Jul 93	1,254	1,254	0.0
Bayou La Branche	COE	Jan 93	IP,BS	Jan 93	IP,OS	Jan 93	IP,BS	Aug 93	Nov 93	4,327	4,327	0.0
Cameron Prairie	USFWS	Oct 92	IP,OS	Aug 92	IP/OS	Apr 92	TC	Oct 92		1,111	1,805	62.5
Vermilion River Cutoff	COE	Jan 93	IP,BS	Mar 93	IP,OS	Jan 93	IP,OS	Dec 93	Feb 94	1,523	1,523	0.0
Eastern Isle Dernieres	EPA	May 92	IS	Sep 92	BS	Nov 92	IP **	Jan 93	Nov 93	6,345	6,345	0.0

See notes

**STATUS:** OS = On Schedule  
 BS = Behind Schedule  
 IP = In Progress  
 IS = Issue Surfaced  
 TC = Task Complete

**EXAMPLE:** OS,IP

**NOTES:**  
 \*\* NEPA PEA is prepared

COASTAL WETLANDS PLANNING, PROTECTION AND RESTORATION ACT

TASK FORCE MEETING  
OCTOBER 19, 1992

ADDITIONAL AGENDA ITEMS

Each Task Force member has the opportunity at this point to propose additional items or issues for the consideration of the Task Force.

COASTAL WETLANDS PLANNING, PROTECTION AND RESTORATION ACT

TASK FORCE MEETING  
OCTOBER 19, 1992

DATE AND LOCATION OF THE NEXT TASK FORCE MEETING

**Recommendation for Task Force Approval:**

DATE: 18-29 January 1993

TIME: 9:30 a.m.

LOCATION: District Assembly Room  
New Orleans District, U.S. Army Corps of Engineers  
Foot of Prytania Street  
New Orleans, Louisiana



COASTAL WETLANDS PLANNING, PROTECTION AND RESTORATION ACT

TASK FORCE MEETING  
OCTOBER 19, 1992

**REQUEST FOR WRITTEN QUESTIONS FROM THE PUBLIC**

All Task Force meetings are open to the public. Interested parties may submit a completed "Question Submittal Card" to the Task Force Chairman at this time. Questions and comments will be addressed at the next regularly scheduled Task Force meeting.

activities, where appropriate, that would contribute to the restoration or improvement of one or more fish stocks of the Great Lakes Basin; and

“(2) activities undertaken to accomplish the goals stated in section 2006.

16 USC 941g.

**SEC. 2009. AUTHORIZATION OF APPROPRIATIONS.**

“(a) There are authorized to be appropriated to the Director—  
“(1) for conducting a study under section 2005 not more than \$4,000,000 for each of fiscal years 1991 through 1994;

“(2) to establish and operate the Great Lakes Coordination Office under section 2008(a) and Upper Great Lakes Fishery Resources Offices under section 2008(c), not more than \$4,000,000 for each of fiscal years 1991 through 1995; and

“(3) to establish and operate the Lower Great Lakes Fishery Resources Offices under section 2008(b), not more than \$2,000,000 for each of fiscal years 1991 through 1995.

“(b) There are authorized to be appropriated to the Secretary to carry out this Act, not more than \$1,500,000 for each of fiscal years 1991 through 1995.”.

Coastal  
Wetlands  
Planning,  
Protection and  
Restoration Act.  
16 USC 3951  
note.

**TITLE III—WETLANDS****SEC. 391. SHORT TITLE.**

This title may be cited as the “Coastal Wetlands Planning, Protection and Restoration Act”.

16 USC 3951.

**SEC. 392. DEFINITIONS.**

As used in this title, the term—

(1) “Secretary” means the Secretary of the Army;

(2) “Administrator” means the Administrator of the Environmental Protection Agency;

(3) “development activities” means any activity, including the discharge of dredged or fill material, which results directly in a more than de minimus change in the hydrologic regime, bottom contour, or the type, distribution or diversity of hydrophytic vegetation, or which impairs the flow, reach, or circulation of surface water within wetlands or other waters;

(4) “State” means the State of Louisiana;

(5) “coastal State” means a State of the United States in, or bordering on, the Atlantic, Pacific, or Arctic Ocean, the Gulf of Mexico, Long Island Sound, or one or more of the Great Lakes; for the purposes of this title, the term also includes Puerto Rico, the Virgin Islands, Guam, the Commonwealth of the Northern Mariana Islands, and the Trust Territories of the Pacific Islands, and American Samoa;

(6) “coastal wetlands restoration project” means any technically feasible activity to create, restore, protect, or enhance coastal wetlands through sediment and freshwater diversion, water management, or other measures that the Task Force finds will significantly contribute to the long-term restoration or protection of the physical, chemical and biological integrity of coastal wetlands in the State of Louisiana, and includes any such activity authorized under this title or under any other provision of law, including, but not limited to, new projects, completion or expansion of existing or on-going projects, individ-

ual phases, portions, or components of projects and operation, maintenance and rehabilitation of completed projects; the primary purpose of a "coastal wetlands restoration project" shall not be to provide navigation, irrigation or flood control benefits;

(7) "coastal wetlands conservation project" means—

(A) the obtaining of a real property interest in coastal lands or waters, if the obtaining of such interest is subject to terms and conditions that will ensure that the real property will be administered for the long-term conservation of such lands and waters and the hydrology, water quality and fish and wildlife dependent thereon; and

(B) the restoration, management, or enhancement of coastal wetlands ecosystems if such restoration, management, or enhancement is conducted on coastal lands and waters that are administered for the long-term conservation of such lands and waters and the hydrology, water quality and fish and wildlife dependent thereon;

(8) "Governor" means the Governor of Louisiana;

(9) "Task Force" means the Louisiana Coastal Wetlands Conservation and Restoration Task Force which shall consist of the Secretary, who shall serve as chairman, the Administrator, the Governor, the Secretary of the Interior, the Secretary of Agriculture and the Secretary of Commerce; and

(10) "Director" means the Director of the United States Fish and Wildlife Service.

**SEC. 303. PRIORITY LOUISIANA COASTAL WETLANDS RESTORATION PROJECTS.** 16 USC 3952.

**(a) PRIORITY PROJECT LIST.—**

(1) **PREPARATION OF LIST.—**Within forty-five days after the date of enactment of this title, the Secretary shall convene the Task Force to initiate a process to identify and prepare a list of coastal wetlands restoration projects in Louisiana to provide for the long-term conservation of such wetlands and dependent fish and wildlife populations in order of priority, based on the cost-effectiveness of such projects in creating, restoring, protecting, or enhancing coastal wetlands, taking into account the quality of such coastal wetlands, with due allowance for small-scale projects necessary to demonstrate the use of new techniques or materials for coastal wetlands restoration.

(2) **TASK FORCE PROCEDURES.—**The Secretary shall convene meetings of the Task Force as appropriate to ensure that the list is produced and transmitted annually to the Congress as required by this subsection. If necessary to ensure transmittal of the list on a timely basis, the Task Force shall produce the list by a majority vote of those Task Force members who are present and voting; except that no coastal wetlands restoration project shall be placed on the list without the concurrence of the lead Task Force member that the project is cost effective and sound from an engineering perspective. Those projects which potentially impact navigation or flood control on the lower Mississippi River System shall be constructed consistent with section 304 of this Act.

(3) **TRANSMITTAL OF LIST.—**No later than one year after the date of enactment of this title, the Secretary shall transmit to the Congress the list of priority coastal wetlands restoration projects required by paragraph (1) of this subsection. Thereafter,

ting, restoring, protecting and enhancing coastal wetlands in Louisiana.

(c) **COASTAL WETLANDS RESTORATION PROJECT BENEFITS.**—Where such a determination is required under applicable law, the net ecological, aesthetic, and cultural benefits, together with the economic benefits, shall be deemed to exceed the costs of any coastal wetlands restoration project within the State which the Task Force finds to contribute significantly to wetlands restoration.

(d) **CONSISTENCY.**—(1) In implementing, maintaining, modifying, or rehabilitating navigation, flood control or irrigation projects, other than emergency actions, under other authorities, the Secretary, in consultation with the Director and the Administrator, shall ensure that such actions are consistent with the purposes of the restoration plan submitted pursuant to this section.

(2) At the request of the Governor of the State of Louisiana, the Secretary of Commerce shall approve the plan as an amendment to the State's coastal zone management program approved under section 306 of the Coastal Zone Management Act of 1972 (16 U.S.C. 1455).

(e) **FUNDING OF WETLANDS RESTORATION PROJECTS.**—The Secretary shall, with the funds made available in accordance with this title, allocate such funds among the members of the Task Force to carry out coastal wetlands restoration projects in accordance with the priorities set forth in the list transmitted in accordance with this section. The Secretary shall not fund a coastal wetlands restoration project unless that project is subject to such terms and conditions as necessary to ensure that wetlands restored, enhanced or managed through that project will be administered for the long-term conservation of such lands and waters and dependent fish and wildlife populations.

(f) **COST-SHARING.**—

(1) **FEDERAL SHARE.**—Amounts made available in accordance with section 306 of this title to carry out coastal wetlands restoration projects under this title shall provide 75 percent of the cost of such projects.

(2) **FEDERAL SHARE UPON CONSERVATION PLAN APPROVAL.**—Notwithstanding the previous paragraph, if the State develops a Coastal Wetlands Conservation Plan pursuant to this title, and such conservation plan is approved pursuant to section 304 of this title, amounts made available in accordance with section 306 of this title for any coastal wetlands restoration project under this section shall be 85 percent of the cost of the project. In the event that the Secretary, the Director, and the Administrator jointly determine that the State is not taking reasonable steps to implement and administer a conservation plan developed and approved pursuant to this title, amounts made available in accordance with section 306 of this title for any coastal wetlands restoration project shall revert to 75 percent of the cost of the project: *Provided, however*, that such reversion to the lower cost share level shall not occur until the Governor has been provided notice of, and opportunity for hearing on, any such determination by the Secretary, the Director, and Administrator, and the State has been given ninety days from such notice or hearing to take corrective action.

(3) **FORM OF STATE SHARE.**—The share of the cost required of the State shall be from a non-Federal source. Such State share shall consist of a cash contribution of not less than 5 percent of

the cost of the project. The balance of such State share may take the form of lands, easements, or right-of-way, or any other form of in-kind contribution determined to be appropriate by the lead Task Force member.

(4) Paragraphs (1), (2), and (3) of this subsection shall not affect the existing cost-sharing agreements for the following projects: Caernarvon Freshwater Diversion, Davis Pond Freshwater Diversion, and Bonnet Carre Freshwater Diversion.

**SEC. 304. LOUISIANA COASTAL WETLANDS CONSERVATION PLANNING.**

16 USC 3953.

**(a) DEVELOPMENT OF CONSERVATION PLAN.—**

(1) **AGREEMENT.**—The Secretary, the Director, and the Administrator are directed to enter into an agreement with the Governor, as set forth in paragraph (2) of this subsection, upon notification of the Governor's willingness to enter into such agreement.

**(2) TERMS OF AGREEMENT.—**

(A) Upon receiving notification pursuant to paragraph (1) of this subsection, the Secretary, the Director, and the Administrator shall promptly enter into an agreement (hereafter in this section referred to as the "agreement") with the State under the terms set forth in subparagraph (B) of this paragraph.

**(B) The agreement shall—**

(i) set forth a process by which the State agrees to develop, in accordance with this section, a coastal wetlands conservation plan (hereafter in this section referred to as the "conservation plan");

(ii) designate a single agency of the State to develop the conservation plan;

(iii) assure an opportunity for participation in the development of the conservation plan, during the planning period, by the public and by Federal and State agencies;

(iv) obligate the State, not later than three years after the date of signing the agreement, unless extended by the parties thereto, to submit the conservation plan to the Secretary, the Director, and the Administrator for their approval; and

(v) upon approval of the conservation plan, obligate the State to implement the conservation plan.

**(3) GRANTS AND ASSISTANCE.—**Upon the date of signing the agreement—

(A) the Administrator shall, in consultation with the Director, with the funds made available in accordance with section 306 of this title, make grants during the development of the conservation plan to assist the designated State agency in developing such plan. Such grants shall not exceed 75 percent of the cost of developing the plan; and

(B) the Secretary, the Director, and the Administrator shall provide technical assistance to the State to assist it in the development of the plan.

**(b) CONSERVATION PLAN GOAL.**—If a conservation plan is developed pursuant to this section, it shall have a goal of achieving no net loss of wetlands in the coastal areas of Louisiana as a result of development activities initiated subsequent to approval of the plan,

(c) **CONDITIONS.**—The Director may only grant or otherwise provide matching moneys to a coastal State for purposes of carrying out a coastal wetlands conservation project if the grant or provision is subject to terms and conditions that will ensure that any real property interest acquired in whole or in part, or enhanced, managed, or restored with such moneys will be administered for the long-term conservation of such lands and waters and the fish and wildlife dependent thereon.

(d) **COST-SHARING.**—

(1) **FEDERAL SHARE.**—Grants to coastal States of matching moneys by the Director for any fiscal year to carry out coastal wetlands conservation projects shall be used for the payment of not to exceed 50 percent of the total costs of such projects: except that such matching moneys may be used for payment of not to exceed 75 percent of the costs of such projects if a coastal State has established a trust fund, from which the principal is not spent, for the purpose of acquiring coastal wetlands, other natural area or open spaces.

(2) **FORM OF STATE SHARE.**—The matching moneys required of a coastal State to carry out a coastal wetlands conservation project shall be derived from a non-Federal source.

(3) **IN-KIND CONTRIBUTIONS.**—In addition to cash outlays and payments, in-kind contributions of property or personnel services by non-Federal interests for activities under this section may be used for the non-Federal share of the cost of those activities.

(e) **PARTIAL PAYMENTS.**—

(1) The Director may from time to time make matching payments to carry out coastal wetlands conservation projects as such projects progress, but such payments, including previous payments, if any, shall not be more than the Federal pro rata share of any such project in conformity with subsection (d) of this section.

(2) The Director may enter into agreements to make matching payments on an initial portion of a coastal wetlands conservation project and to agree to make payments on the remaining Federal share of the costs of such project from subsequent moneys if and when they become available. The liability of the United States under such an agreement is contingent upon the continued availability of funds for the purpose of this section.

Texas.

(f) **WETLANDS ASSESSMENT.**—The Director shall, with the funds made available in accordance with the next following section of this title, direct the U.S. Fish and Wildlife Service's National Wetland Inventory to update and digitize wetlands maps in the State of Texas and to conduct an assessment of the status, condition, and trends of wetlands in that State.

16 USC 3955.

**SEC. 304. DISTRIBUTION OF APPROPRIATIONS.**

(a) **PRIORITY PROJECT AND CONSERVATION PLANNING EXPENDITURES.**—Of the total amount appropriated during a given fiscal year to carry out this title, 70 percent, not to exceed \$70,000,000, shall be available, and shall remain available until expended, for the purposes of making expenditures—

(1) not to exceed the aggregate amount of \$5,000,000 annually to assist the Task Force in the preparation of the list required under this title and the plan required under this title, including preparation of—

