



# Small Diversion at Convent/Blind River

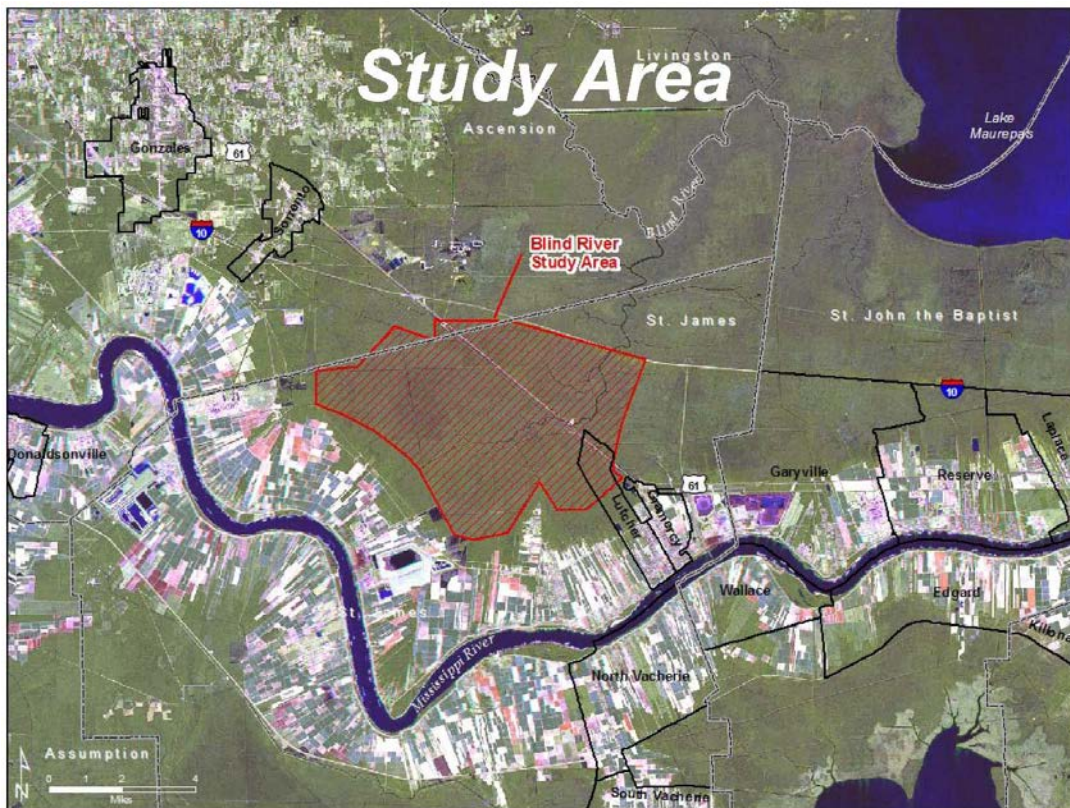
July 2013

**U.S. ARMY CORPS OF ENGINEERS**

**BUILDING STRONG®**

The Louisiana Coastal Area (LCA) program focuses on critical, near-term ecosystem restoration projects and studies, as approved in the Water Resources Development Act of 2007. The program goal is to slow the current trend of coast-wide wetland loss and resource degradation.

Several restoration techniques are employed in this program, including river diversions, marsh creation and barrier island restoration. Overall, the program is focused on a systematic approach to coastal restoration using larger projects to restore natural features and ecosystem processes.



The Small Diversion at Convent/Blind River project is a freshwater diversion project identified in the LCA program. It was one of six projects (LCA 6) authorized under the Water Resources Development Act of 2007 - Section 7006(e)(3) and the Coastal Protection and Restoration Authority Board of Louisiana (CPRAB) is the cost-share partner in the development and implementation of this project.

### Project Location

The project is located within the Maurepas Swamp, which is located in Ascension and St. James Parishes, Louisiana.

### Project Goals

The goal of the Small Diversion at Convent/Blind River project is to reverse the trend of degradation in the southeast portion of the Maurepas Swamp.

### Objectives

The objective of the Small Diversion at Convent/Blind River project is to reduce the level of salinity within the project area by providing additional flow into the Blind River, Lake Maurepas and Lake Pontchartrain by employing controlled introductions of Mississippi River water into the project area. The specific objectives developed for the project are:

- Reduce habitat conversion and future land loss
- Improve existing hydrology

**U.S. ARMY CORPS OF ENGINEERS – NEW ORLEANS DISTRICT**  
7400 LEAKE AVENUE, NEW ORLEANS, LA 70118

[www.lca.gov](http://www.lca.gov)

Visit the following links to follow us on Facebook, Twitter and Flickr:

<http://www.facebook.com/usacenola>

<http://twitter.com/teamneworleans>

<http://www.flickr.com/photos/teamneworleans>



# Small Diversion at Convent/Blind River

July 2013

**U.S. ARMY CORPS OF ENGINEERS**

**BUILDING STRONG®**

- Introduce freshwater, nutrients and sediment to swamps
- Promote water circulation to improve water quality
- Improve bald cypress/tupelo productivity (Decrease tree mortality, new seedling establishment)
- Improve the habitat conditions for fish and wildlife

## Project Features

The recommended plan for the Small Diversion at Convent/Blind River consists of a 3,000 cubic feet per second (cfs) capacity gated box culvert diversion on the Mississippi River with a conveyance channel to be constructed in the vicinity of Romeville, Louisiana. The recommended plan has six major components: a diversion structure, a conveyance channel, control structures, approximately 30 berm gaps, culverts at four locations along U.S. Highway 61, and instrumentation to monitor and control the diversion flow rate and the water surface elevations throughout the project areas.

The recommended plan will restore freshwater, nutrient and sediment input from the Mississippi River into the project area. It will promote water distribution in the swamp, facilitate swamp building and establish hydrologic period fluctuation in the swamp, improving fish and wildlife habitat. The recommended plan will improve habitat function for over 21,369 acres of bald cypress-tupelo swamp and improve habitat for many fish and wildlife species including migratory birds, bald eagles, alligators, gulf sturgeon and the manatee. The recommended plan meets the LCA program and project objectives, and is within the scope of the authorization.

## Project Status

The Small Diversion at Convent/Blind River Chief of Engineers Report was signed on December 30, 2010 and recommended implementation of the project. The Preconstruction Engineering and Design (PED) Project Management Plan (PMP) was developed for the diversion structure only, and was approved by CPRA and the Corps in August 2011. The PED Design Agreement (DA), also for the diversion structure only, was signed in December 2011 and work was initiated.

However, both the PMP and the DA are currently being amended to reflect the recent agreement to proceed with the design of all features of the Small Diversion at Convent/Blind River project. While the amendments to the PMP and DA are being finalized, PED efforts on the structure continue with a focus on the design of the diversion structure. Completion is scheduled for September 2014.

Anyone seeking additional information on the Small Diversion at Convent/Blind River project can visit the Louisiana Coastal Area program website at [www.lca.gov](http://www.lca.gov) or the New Orleans District website at [www.mvn.usace.army.mil/Missions/Environmental/LouisianaCoastalArea/CriticalNearTermProjects/SmallDiversionatConventBlindRiver.aspx](http://www.mvn.usace.army.mil/Missions/Environmental/LouisianaCoastalArea/CriticalNearTermProjects/SmallDiversionatConventBlindRiver.aspx).

---

**U.S. ARMY CORPS OF ENGINEERS – NEW ORLEANS DISTRICT**  
7400 LEAKE AVENUE, NEW ORLEANS, LA 70118

[www.lca.gov](http://www.lca.gov)

Visit the following links to follow us on Facebook, Twitter and Flickr:

<http://www.facebook.com/usacenola>

<http://twitter.com/teamneworleans>

<http://www.flickr.com/photos/teamneworleans>