

Typical construction process:

Jefferson Ave. – phase I, Napoleon Ave. - phase 2, Claiborne Ave. - phase 1 and 2.



US Army Corps of Engineers
New Orleans District



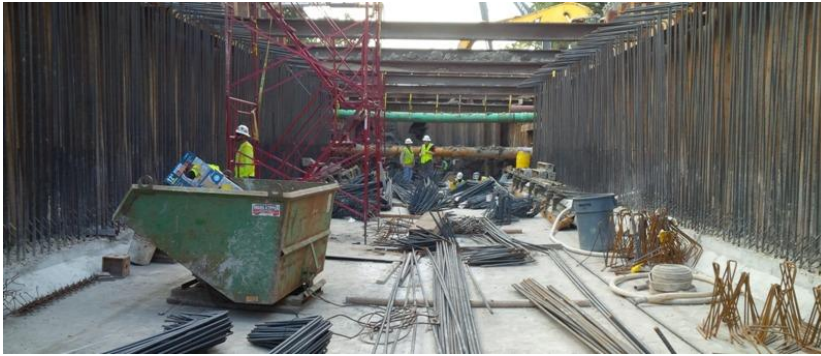
1. Existing sewer and water mains are relocated, if necessary
2. Timber pile supported box: timber and sheet piles are installed
3. Excavation of Material

Typical construction process:

Jefferson Ave. – phase I, Napoleon Ave. - phase 2, Claiborne Ave. - phase 1 and 2.



US Army Corps of Engineers
New Orleans District



5. Materials are backfilled into the ground



4. Box culvert construction takes place



6. Roadway is restored



US Army Corps
of Engineers
New Orleans District

Typical construction process:

Jefferson Ave. – Phase 2, Napoleon Ave. – phase 3 and Louisiana Ave.



1. Existing sewer and water mains are relocated if necessary.
2. Jet grout supported box: sheet piles are installed and jet grout operations take place.
3. Materials are excavated.





US Army Corps
of Engineers
New Orleans District

Typical construction process:

Jefferson Ave. – Phase 2, Napoleon Ave. – phase 3 and Louisiana Ave.



5. Materials are backfilled into the ground



4. Box culvert construction takes place



6. Roadway is restored