

# West Shore Lake Pontchartrain

## Stakeholder Update

29 January 2020

**Chris Gilmore, PE, PMP**  
**Sr. Project Manager**  
**New Orleans District**  
**U.S. Army Corps of Engineers**



®

US Army Corps of Engineers  
**BUILDING STRONG**®



# Agenda

- Project Overview
- General Status
- Environmental Clearances
- Right-of-Entry
- Vegetation Clearing Contract
- Stock Pile Contract
- Pump Station Alternatives and Recommendation
- St. James Parish Update

# WEST SHORE LAKE PONTCHARTRAIN

## *PROJECT OVERVIEW*

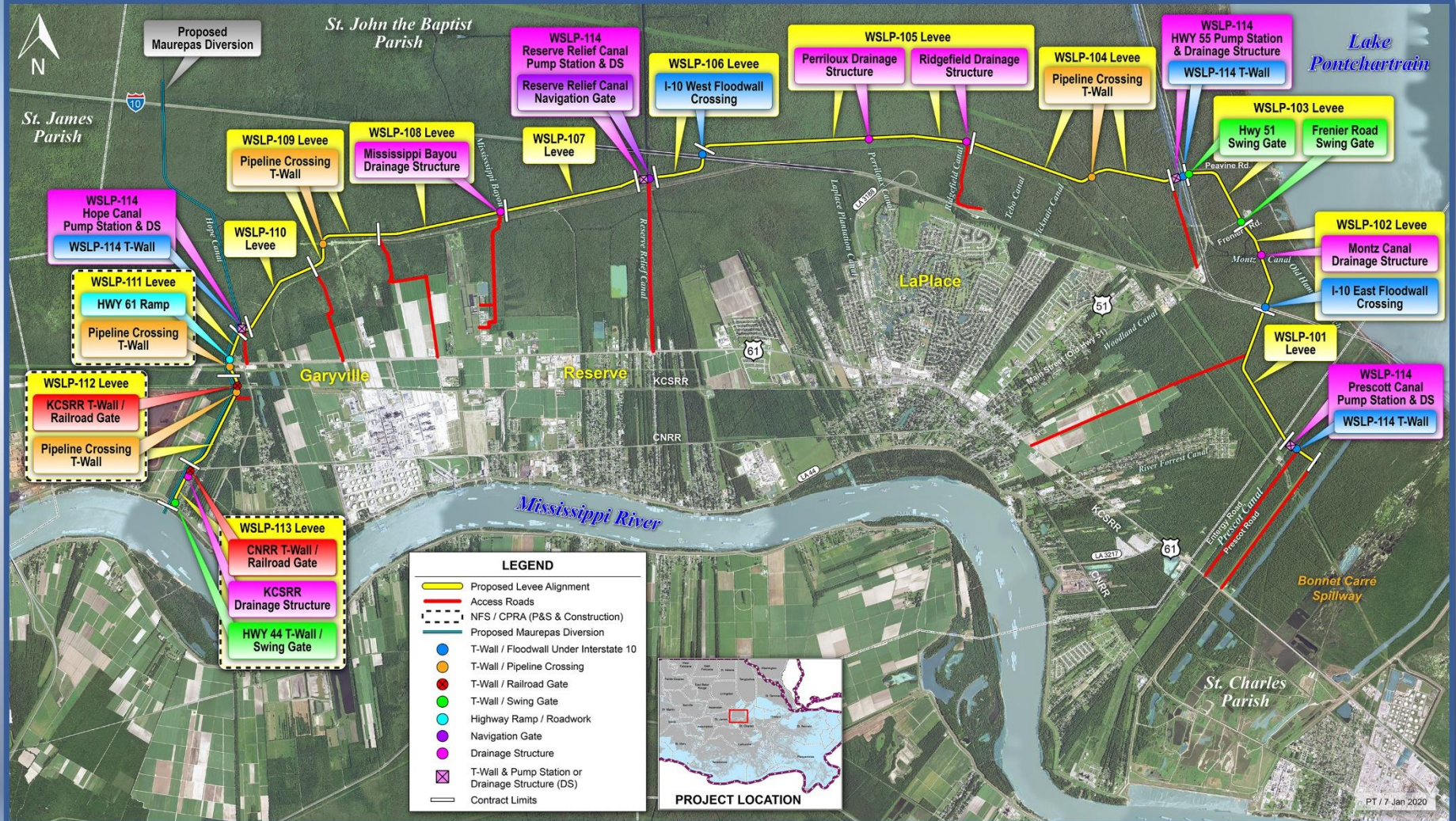
### ▪ **Project Description / Scope**

- Alignment is approximately 23 miles in length, consisting of 22.0 miles of levee and 1 mile of T-wall:
  - St. Charles Parish = 0.5 miles
  - St. John Parish = 18.0 miles
  - St. James Parish = 4.5 miles.
- The project includes 4 pump stations, 9 drainage structures, 3 gated road crossings, 2 railroad gates, approximately 35 utility relocations, 145 culvert valves / gates, and raising / floodproofing of a limited number of structures.
- Approximately 7.0 million cy of embankment material will be required for levee construction.
- In excess of 1,000 acres of new right of way will need to be acquired.
- Habitat impacts will require compensation for approximately 1,090 AAHU's
- \$760M appropriation (includes real estate, design, construction, etc.)





# West Shore Lake Pontchartrain







# WSLP - St James Parish





# General Status

- High level USACE team site visit to WSLP project site last week
- Levee construction reaches have been optimized to maximize construction access (shown on following page)
  - ▶ Currently have 13 levee contracts and 1 pump station contract
- Continue to coordinate with CPRA regarding design and construction of the west alignment and the State's Maurepas Diversion Project
- Vegetation clearing of levee alignment for field investigations complete. Contractor has demobilized off site.
- Field Investigations approximately 99% complete. The last boring is being taken this week.
- Detailed designs scheduled to begin January 2020
- Real Estate efforts on-going
- Begin constructing access roads and sand base in 2020. Scheduled to award first levee construction late 2020
- Project Website continually updated/improved
  - ▶ [www.mvn.usace.army.mil/About/Projects/West-Shore-Lake-Pontchartrain/](http://www.mvn.usace.army.mil/About/Projects/West-Shore-Lake-Pontchartrain/)
  - ▶ Google "West Shore Lake Pontchartrain"







# Levee Borrow Requirements

- Currently estimating a need of about 7.0M cubic yards of levee material for construction
- Only currently approved borrow source is a government furnished borrow pit – i.e. Bonnet Carre' Spillway (BCS)
  - ▶ BCS currently has 3.5M CY readily available
- Will continue to pursue additional Government Furnished borrow pits until sufficient borrow is identified
- Previously used Contractor Furnished Borrow List not authorized to be used for the WSLP project
- Requested approval to use commercially available borrow as an option to supplement the government furnished borrow
  - ▶ Very optimistic that this request will be approved this week
- Additionally, will pursue a borrow supply contract



# WEST SHORE LAKE PONTCHARTRAIN

## TENTATIVE *DELIVERY PLAN*

<b>Contract ID</b>	<b>Description</b>	<b>Acquisition Strategy</b>	<b>Construction Complete Date</b>	<b>Estimated Contract Value</b>
WSLP 101	Levee	Small Business	3Q 2023	\$25M - \$50M
WSLP 102	Levee, Floodwall, Drainage Structure(s)	Small Business	4Q 2022	\$25M - \$50M
WSLP 103	Levee, Floodwall, Flood Gate	Small Business	1Q 2023	\$15M - \$25M
WSLP 104	Levee, Floodwall, Utility Crossings	Small Business	3Q 2023	\$25M - \$50M
WSLP 105	Levee, Floodwall, Drainage Structure(s)	Small Business	2Q 2023	\$35M - \$55M
WSLP 106	Levee and Floodwall	Small Business	2Q 2023	\$15M - \$25M
WSLP 107	Levee, Floodwall, Drainage Structure(s)	Small Business	1Q 2023	\$15M - \$25M
WSLP 108	Levee	Small Business	1Q 2023	\$15M - \$25M
WSLP 109	Levee, Floodwall, Utility Crossings	Small Business	1Q 2023	\$5M - \$20M
WSLP 110	Levee	Small Business	1Q 2023	\$5M - \$20M
WSLP 111	Levee, Highway Ramp, Utility Crossings	Small Business	4Q 2022	\$20M - \$40M
WSLP 112	Levee, Rail Road Gate, Floodwall, Utility Crossings	Small Business	3Q 2023	\$5M - \$20M
WSLP 113	Levee, Floodwall, Rail Road Gate	Small Business	2Q 2023	\$5M - \$20M
WSLP 114	Pump Stations	Unrestricted/Best Value	2Q 2023	\$150M - \$250M

Note: Project requirements and schedule are subject to change as designs are refined and impacts identified.



# WEST SHORE LAKE PONTCHARTRAIN MISCELLANEOUS CONTRACTS

- Currently Plan to issue several smaller contracts for various pre-construction efforts
  - ▶ Stock pile contracts
    - Stockpile Contract #1 – Solicitation on hold
    - Stockpile Contract #2 – awarded on 20 Dec 2019, NTP issued 02 Jan 2020
    - Sand Stockplie Contract – P&S being developed
  - ▶ Sand base placement and Access Road contract(s)
  - ▶ Additional vegetation clearing contract(s)
- May issue separate contracts or combine the above efforts
- Could be issued as early as the beginning of 2020



# Environmental Clearances

- Additional environmental clearances are required before construction can begin
- Supplement Environmental Assessment for Construction is underway
  - ▶ Updating the project description
  - ▶ Updating project impacts
    - Direct
    - Indirect
- Public review scheduled to begin 24 Mar 2020
- Environmental clearances scheduled to be complete May 2020



# Real Estate/Right-of-Entry

- All ROE obtained for field investigations
- Right-of-Way for Construction Activities
  - ▶ PLD and CPRA have begun title research for the currently identified properties
- Have requested right of entry for investigations along the ring levee alignments for St. James Parish

# Vegetation Clearing Contract

- Vegetation Clearing Contracts (Field Investigations)
  - ▶ Awarded the first vegetation clearing contract on 15 May 19
    - Awarded to Quality First Marine
    - Award amount = \$2,478,285.67
  - ▶ Awarded the second vegetation clearing contract on 12 Jul 19
    - Awarded to Quality First Marine
    - Award amount = \$2,594,932.28
  - ▶ All work complete
  
- Boring Task Order Awarded on 18 Jul 19
  - ▶ Three crews currently on-site
  - ▶ Borings are underway – 197 of 198 complete
  - ▶ Scheduled to be complete by early 2020



# USACE Pump Station and Drainage Structure Recommendations

- Hydraulic analysis on-going
  - ▶ Determine drainage structure number and size
  - ▶ Ensure pump stations and drainage structures can accommodate Parish pump capacity and drainage requirements
  - ▶ Ensure construction does not impact drainage
- Current Recommendations
  - ▶ Pump Stations
    - Hope Canal - 800 cfs
    - Reserve Canal - 2,000 cfs
    - I-55 - 2,000 cfs
    - Prescott Canal - 800 cfs
  - ▶ Drainage Structures
    - 25 total openings in 9 drainage structures
    - Increase of 13 openings
  - ▶ Interior Drainage Canal
    - 75 ft top width; 25 ft bottom width; 8 ft deep
  - ▶ Scheduling a meeting with St. John Parish to discuss drainage patterns
- CPRA and PLD will be provided with an updated report to review

# St. James Parish Update

- Submitted ROE request for field investigations, and designs of the ring levees
  - ▶ PLD working through ROE process
- Investigated four alternatives -- any alignment other than the feasibility alternative will require additional approval
  - ▶ Risk Management Center reviewing features to level of risk associated with features
  - ▶ Value Engineering Study to be conducted on the features
  - ▶ Will investigate an alternative proposed by St. James Parish Government
- Coordinating with USACE higher authority on possibly changing alignment or alternative to flap gates