

West Shore Lake Pontchartrain

Stakeholder Update

18 December 2019

Chris Gilmore, PE, PMP
Sr. Project Manager
New Orleans District
U.S. Army Corps of Engineers



US Army Corps of Engineers
BUILDING STRONG®



Agenda

- Project Overview
- General Status
- Environmental Clearances
- Right-of-Entry
- Vegetation Clearing Contract
- Stock Pile Contract
- Pump Station Alternatives and Recommendation
- St. James Parish Update

<https://www.mvn.usace.army.mil/About/Projects/West-Shore-Lake-Pontchartrain/>

WEST SHORE LAKE PONTCHARTRAIN

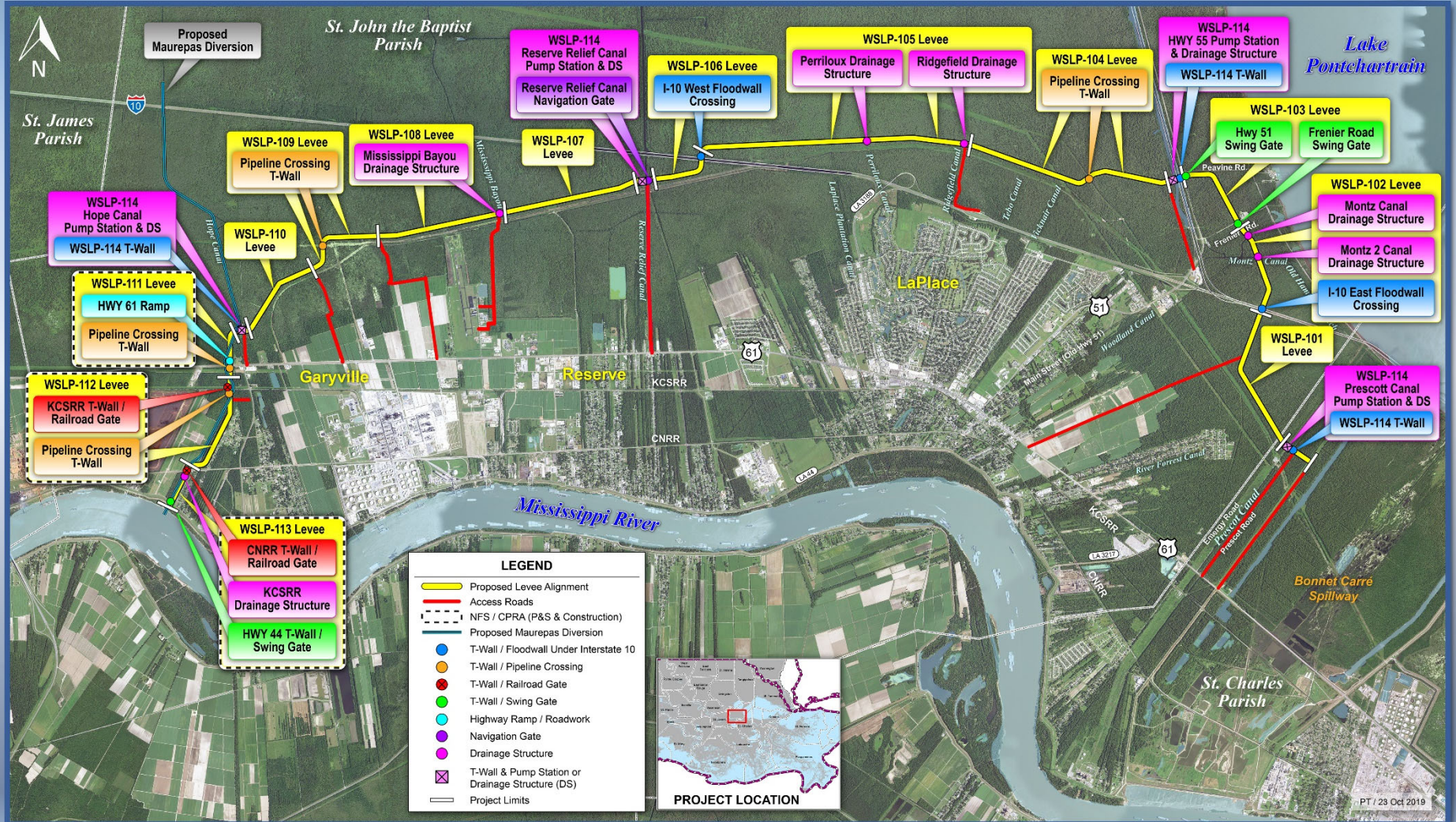
PROJECT OVERVIEW

▪ Project Description / Scope

- Alignment is approximately 23 miles in length, consisting of 22.0 miles of levee and 1 mile of T-wall:
 - St. Charles Parish = 0.5 miles
 - St. John Parish = 18.0 miles
 - St. James Parish = 4.5 miles.
- The project includes **4** pump stations, **9** drainage structures, 3 gated road crossings, 2 railroad gates, approximately 35 utility relocations, 145 culvert valves / gates, and raising / floodproofing of a limited number of structures.
- Approximately **7.0 million** cy of embankment material will be required for levee construction.
- In excess of 1,000 acres of new right of way will need to be acquired.
- Habitat impacts will require compensation for approximately 1,090 AAHU's
- \$760M appropriation (includes real estate, design, construction, etc.)



West Shore Lake Pontchartrain





WSLP - St James Parish



General Status

- Levee construction reaches have been optimized to maximize construction access (shown on following page)
 - ▶ Currently have 13 levee contracts and 1 pump station contract
- Continue to coordinate with CPRA regarding design and construction of the west alignment and the State's Maurepas Diversion Project
- Vegetation clearing of levee alignment for field investigations complete. Contractor has demobilized off site.
- Field Investigations approximately **70%** complete
- Detailed designs scheduled to begin **January** 2020
- Real Estate efforts on-going
- Begin constructing access roads and sand base in early 2020. Scheduled to award first levee construction late 2020
- Working on updating project website to better disseminate project information
- Project Website continually updated/improved
 - ▶ www.mvn.usace.army.mil/About/Projects/West-Shore-Lake-Pontchartrain/
 - ▶ Google "West Shore Lake Pontchartrain"

Levee Borrow Requirements

- Currently estimating a need of about 7.0M cubic yards of levee material for construction
- Only currently approve borrow source is a government furnished borrow pit – i.e. Bonnet Carre' Spillway (BCS)
 - ▶ BCS currently has 3.5M CY readily available
- Will continue to pursue additional Government Furnished borrow pits until sufficient borrow is identified
- Previously used Contractor Furnished Borrow List not authorized to be used for the WSLP project
- Requested approval to use commercially available borrow as an option to supplement the government furnished borrow

WEST SHORE LAKE PONTCHARTRAIN

TENTATIVE *DELIVERY PLAN FOR THE PROJECT*

CONTRACT ID	DESCRIPTION	Proposed Acquisition Strategy	Estimated Contract Value
WSLP-01	Sta. 100+00 to 125+00: Levee	Small Business	\$25M - \$50M
WSLP-02	Sta. 125+00 to 205+00: Levee, floodwall, drainage structure	Small Business	\$25M - \$50M
WSLP-03	Sta. 205+00 to 245+00: Levee, floodwall, and flood gate	Small Business	\$15M - \$25M
WSLP-04	Sta. 245+00 to 255+00: Levee, floodwall, utility crossings	Small Business	\$25M - \$50M
WSLP-05	Sta. 255+00 to 320+00: Levee, floodwall, and drainage structure(s)	Small Business	\$35M - \$55M
WSLP-06	Sta. 320+00 to 345+00: Levee and flood wall	Small Business	\$15M - \$25M
WSLP-07	Sta. 345+00 to 395+00: Levee, floodwall, and drainage structure(s)	Small Business	\$15M - \$25M
WSLP-08	Sta. 395+00 to 460+00: Levee	Small Business	\$15M - \$25M
WSLP-09	Sta. 460+00 to 475+00: Levee, floodwall, and utility crossing(s)	Small Business	\$5M - \$20M
WSLP-10	Sta. 475+00 to 615+00: Levee	Small Business	\$5M - \$15M
WSLP-11	Sta. 615+00 to 670+00: Levee, highway ramp, utility crossing(s)	Small Business	\$20M - \$40M
WSLP-12	Sta. 670+00 to 685+00: Levee, rail road gate, flood wall, utility crossing(s)	Small Business	\$5M - \$15M
WSLP-13	Sta. 685+00 to 765+00: Levee, floodwall, rail road gate	Small Business	\$5M - \$15M
WSLP-14	Pump Stations	Unrestricted/Best Value	\$150M - \$250M

Note: Project requirements and schedule are subject to change as designs are refined and impacts identified.

WEST SHORE LAKE PONTCHARTRAIN

TENTATIVE SCHEDULE

CONTRACT ID	SOLICITATION*	CONSTRUCTION COMPLETE*
WSLP-01	4Q 2020	3Q 2023
WSLP-02	4Q 2020	4Q 2022
WSLP-03	4Q 2020	1Q 2023
WSLP-04	4Q 2020	3Q 2023
WSLP-05	4Q 2020	2Q 2023
WSLP-06	4Q 2020	2Q 2023
WSLP-07	4Q 2020	1Q 2023
WSLP-08	4Q 2020	1Q 2023
WSLP-09	4Q 2020	1Q 2023
WSLP-10	4Q 2020	1Q 2023
WSLP-11	4Q 2020	4Q 2022
WSLP-12	4Q 2020	3Q 2023
WSLP-13	4Q 2020	2Q 2023
WSLP-14	4Q 2021	2Q 2023

*Calendar year

Note: Project requirements and schedule are subject to change as designs are refined and impacts identified.

WEST SHORE LAKE PONTCHARTRAIN MISCELLANEOUS CONTRACTS

- Currently Plan to issue several smaller contracts for various pre-construction efforts
 - ▶ Stock pile contracts
 - Stockpile Contract #1 – proposals due 18 Dec 19
 - ▷ Solicitation on hold
 - Stockpile Contract #2 – proposals due 03 Dec 19
 - ▷ Award scheduled before end of year
 - ▶ Sand base placement contract(s)
 - ▶ Access Road contract(s)
 - ▶ Additional vegetation clearing contract(s)
- May issue separate contracts or combine the above efforts
- Could be issued as early as the beginning of 2020

Environmental Clearances

- Additional environmental clearances are required before construction can begin
- Supplement Environmental Assessment for Construction is underway
 - ▶ Updating the project description
 - ▶ Updating project impacts
 - Direct
 - Indirect
- Public review scheduled to begin 01 April 2020
- Environmental clearances scheduled to be complete May 2020

Real Estate/Right-of-Entry

- All ROE obtained for field investigations
- Right-of-Way for Construction Activities
 - ▶ PLD and CPRA have begun title research for the currently identified properties
- Have requested right of entry for investigations along the ring levee alignments for St. James Parish

Vegetation Clearing Contract

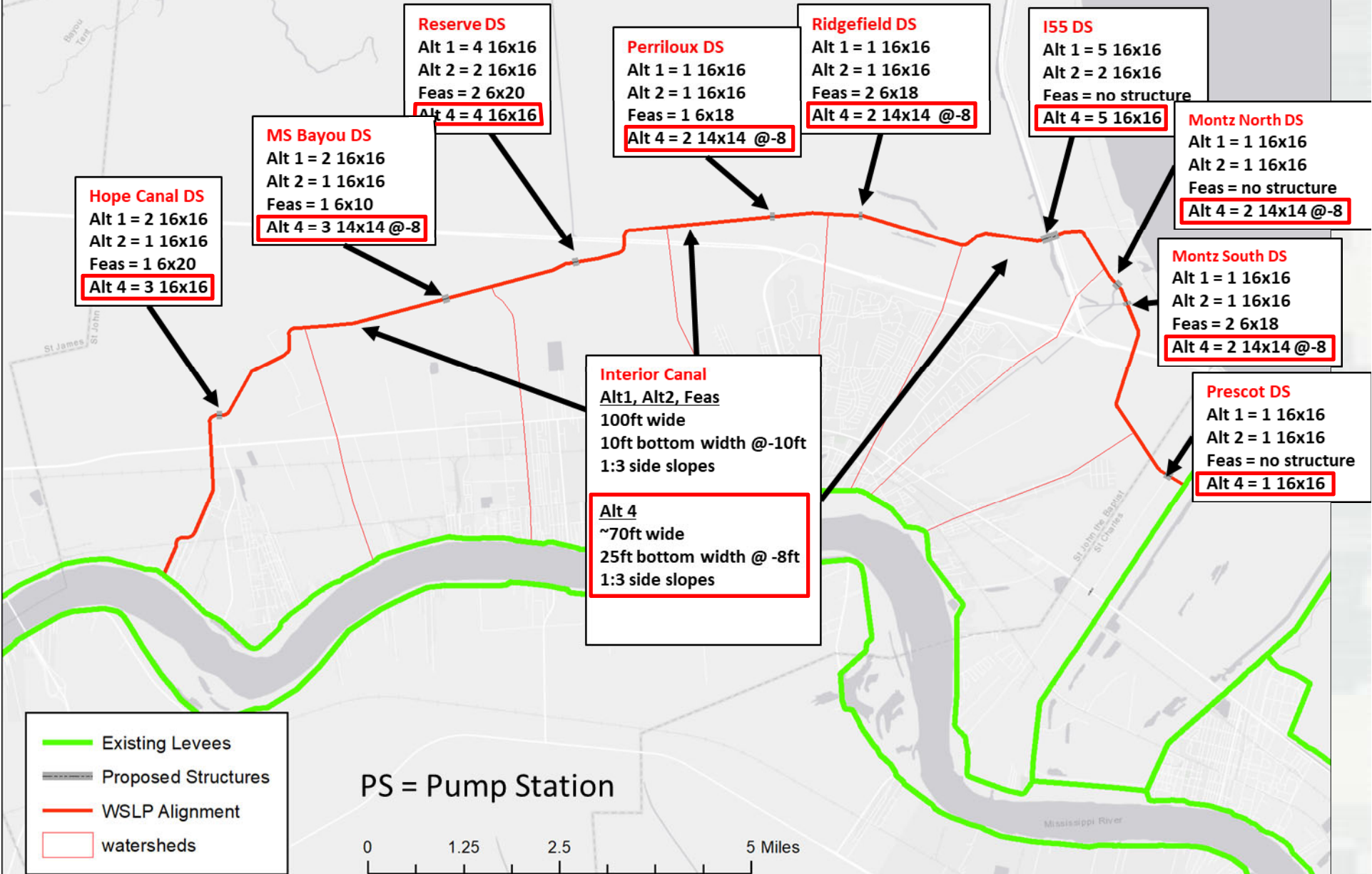
- Vegetation Clearing Contracts (Field Investigations)
 - ▶ Awarded the first vegetation clearing contract on 15 May 19
 - Awarded to Quality First Marine
 - Award amount = \$2,478,285.67
 - ▶ Awarded the second vegetation clearing contract on 12 Jul 19
 - Awarded to Quality First Marine
 - Award amount = \$2,594,932.28
 - ▶ All work complete

- Boring Task Order Awarded on 18 Jul 19
 - ▶ Three crews currently on-site
 - ▶ Borings are underway – 112 of 198 complete
 - ▶ Scheduled to be complete by early 2020

USACE Pump Station and Drainage Structure Recommendations

- Hydraulic analysis on-going
 - ▶ Determine drainage structure number and size
 - ▶ Ensure pump stations and drainage structures can accommodate Parish pump capacity and drainage requirements
 - ▶ Ensure construction does not impact drainage
- Current Recommendations
 - ▶ Pump Stations
 - Hope Canal - 800 cfs
 - Reserve Canal - 2,000 cfs
 - I-55 - 2,000 cfs
 - Prescott Canal - 800 cfs
 - ▶ Drainage Structures
 - 25 total openings in 9 drainage structures
 - Increase of 13 openings
 - ▶ Interior Drainage Canal
 - 75 ft top width; 25 ft bottom width; 8 ft deep
 - ▶ Scheduling a meeting with St. John Parish to discuss drainage patterns
- CPRA and PLD will be provided with an updated report to review

Drainage Structure Design Alternatives



Pump Station Design Alternatives



Reserve PS
 Alt 1 = 2000 cfs
 Alt 2 = 2000 cfs
 Alt 3 = 1600 cfs
Alt 4 = 1200 cfs
 Feas = 400 cfs

Ridgefield PS
 Alt 1 = 800 cfs
 Alt 2 = no pump
 Alt 3 = no pump
Alt 4 = no pump
 Feas = 200 cfs

I55 PS
 Alt 1 = 2000 cfs
 Alt 2 = 2000 cfs
 Alt 3 = 1600 cfs
Alt 4 = 1200 cfs
 Feas = no pump

Montz South PS
 Alt 1 = 800 cfs
 Alt 2 = no pump
 Alt 3 = no pump
Alt 4 = no pump
 Feas = 1100 cfs

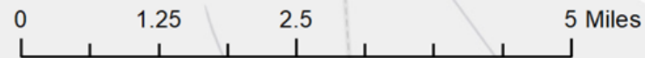
Prescot PS
 Alt 1 = 800 cfs
 Alt 2 = 800 cfs
 Alt 3 = 600 cfs
Alt 4 = 400 cfs
 Feas = no pump

Hope Canal PS
 Alt 1 = 800 cfs
 Alt 2 = 800 cfs
 Alt 3 = 600 cfs
Alt 4 = 400 cfs
 Feas = 450 cfs

Interior Canal
 100ft wide
 40ft bottom width @ -10ft
 1:3 side slopes

- Existing Levees
- Proposed Structures
- WSLP Alignment
- watersheds

PS = Pump Station



St. James Parish Update

- Submitted ROE request for field investigations, and designs of the ring levees
 - ▶ Was presented on the PLD Board Agenda last night
- Investigated four alternatives -- any alignment other than the feasibility alternative will require additional approval
 - ▶ Risk Management Center reviewing features to level of risk associated with features
 - ▶ Value Engineering Study to be conducted on the features
- Coordinating with USACE higher authority on possibly changing alignment or alternative to flap gates