



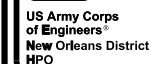
# Rehabilitation of Hurricane Gustav and Hurricane Ike Damage

# Jefferson Parish, Louisiana

Solicitation: W912P8-09-B-0035

Contract: XXXXXX-XX-X-XXXX

# February 2009

[illegible]

U.S. ARMY CORPS OF ENGINEERS NEW ORLEANS DISTRICT NEW ORLEANS, LOUISIANA HURRICANE PROTECTION OFFICE	DESIGNED BY: DWN BY: CHKD BY: SUBMITTED BY: R. DAWKINS R. DAWKINS	DATE: 02/09/2009
U.S. ARMY CORPS OF ENGINEERS SAINT LOUIS DISTRICT SAINT LOUIS, MISSOURI	SOLICITATION NO.: W12P60-09-0005 CONTRACT NO.: H15-4849	FILE NAME: 1/20/2009

GRAND ISLE AND VICINITY  
REHABILITATION OF HURRICANE  
GUSTAV AND HURRICANE IKE DAMAGE  
JEFFERSON PARISH, LOUISIANA

**SHEET  
IDENTIFICATION  
G-1**

THIS PROJECT WAS DESIGNED BY THE HURRICANE PROTECTION OFFICE, CORPS OF ENGINEERS, THE INITIALS OR SIGNATURES OF ANY DESIGNERS APPEAR ON THESE PROJECT DOCUMENTS WITHIN THE SCOPE OF THEIR EMPLOYMENT AS REQUIRED BY ER 1110-1-8152. THE FOLLOWING ARE THE OFFICIAL WRITTEN RECORD OF SIGNATURES REQUIRED BY ER 1110-1-8152 FOR THE ABOVE OR SO AS TO FACILITATE ELECTRONIC BID SETS (EBS).

SUBMITTED BY: \_\_\_\_\_ DATE: \_\_\_\_\_  
CHIEF, ENGINEERING AND CONSTRUCTION

SUBMITTED BY: \_\_\_\_\_ DATE: \_\_\_\_\_  
CHIEF, LEVEES, FLOODWALLS, AND ARMORING

SUBMITTED BY: \_\_\_\_\_ DATE: \_\_\_\_\_  
CHIEF FOR PROGRAM EXECUTION

SUBMITTED BY: \_\_\_\_\_ DATE: \_\_\_\_\_  
CHIEF FOR EXECUTION SUPPORT

SUBMITTED BY: \_\_\_\_\_ DATE: \_\_\_\_\_

## D

C





## B

A

## ABBREVIATIONS

## LEGEND

STA. - STATION  
ELEV. - ELEVATION  
ROW - RIGHT-OF-WAY  
C - CENTERLINE  
EXIST. - EXISTING  
PROP. - PROPOSED  
O.C. - ON-CENTER  
NTS - NOT TO SCALE

LH		PEDESTRIAN CROSSOVER - LEFT HAND ORIENTATION
RH		PEDESTRIAN CROSSOVER - RIGHT HAND ORIENTATION
LH		EMERGENCY VEHICLE CROSSOVER - LEFT HAND ORIENTATION
RH		EMERGENCY VEHICLE CROSSOVER - RIGHT HAND ORIENTATION

 SURVEY CONTROL POINTWP##  2008 SOIL SAMPLE

— . . — . . — **EXISTING RIGHT-OF-WAY**

———— - ———— **EXISTING DUNE CENTERLINE**

## TIDAL DATUMS AT GRAND ISLE, LA

(BASED ON DATA FROM JANUARY 1997 - DECEMBER 2001 FROM TIDAL EPOCH 1983-2001)

**SHEET  
IDENTIFICATION  
G-2**

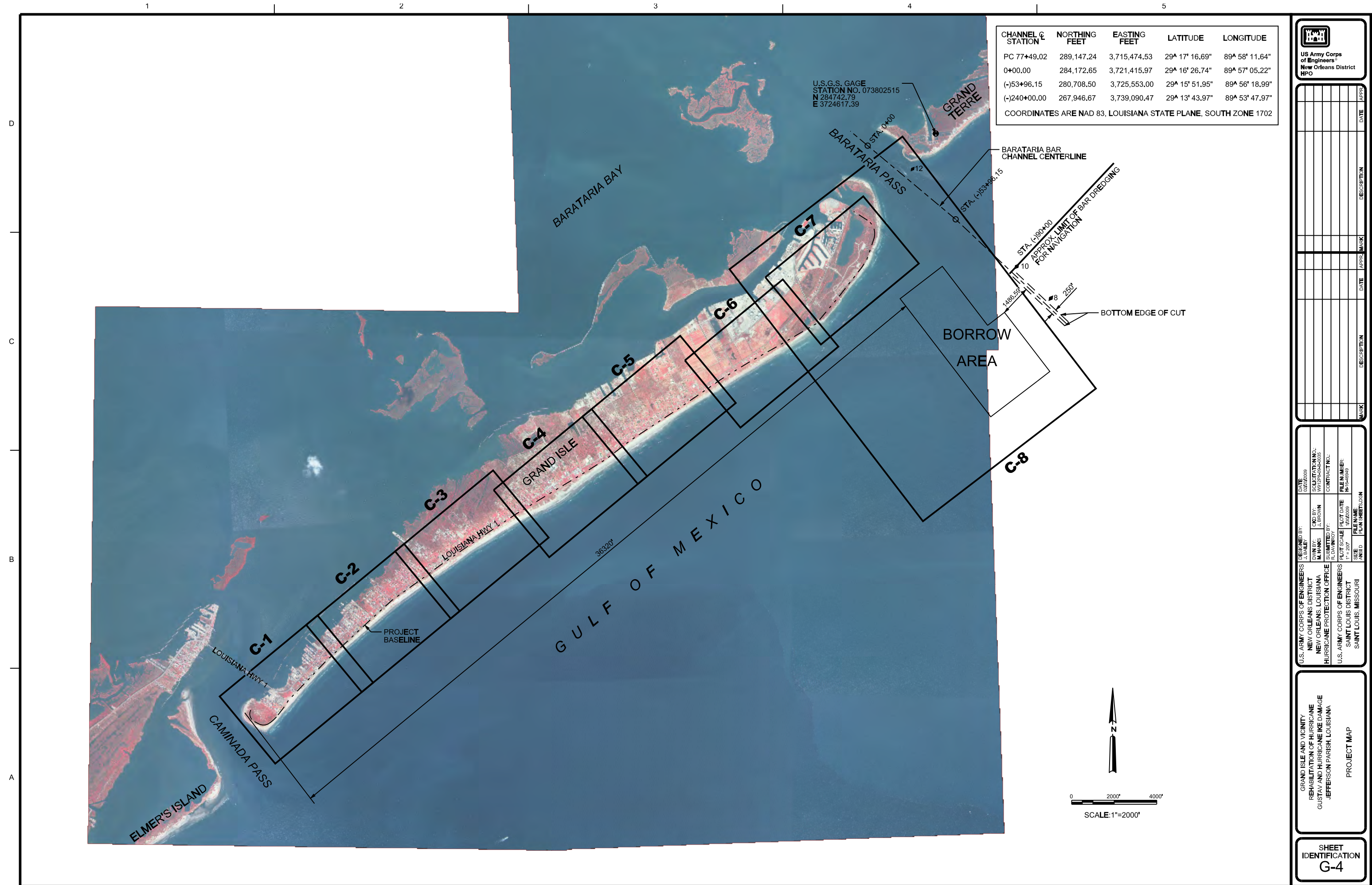
OBTAINED FROM NOS/NOAA REFERENCING TIDE GAGE GDIL1

[illegible]

U.S. ARMY CORPS OF ENGINEERS NEW ORLEANS DISTRICT NEW ORLEANS, LOUISIANA HURRICANE PROTECTION OFFICE	DESIGNED BY: DATE: 10/24/2009	LOCATED BY: DATE: 10/24/2009	CONTRACT NO.:	FILE NUMBER: H-15-48949
U.S. ARMY CORPS OF ENGINEERS SAINT LOUIS DISTRICT SAINT LOUIS, MISSOURI	DESIGNED BY: DATE: 10/24/2009	LOCATED BY: DATE: 10/24/2009	CONTRACT NO.:	FILE NUMBER: H-15-48949

**GRAND ISLE AND VICINITY  
REHABILITATION OF HURRICANE  
GUSTAV AND HURRICANE IKE DAMAGE  
JEFFERSON PARISH, LOUISIANA**







DA

1. TYPICAL SECTIONS ARE SHOWN ON SHEETS C-9 TO C-10.
2. DISTANCES FROM EXISTING RIGHT-OF-WAY TO CENTERLINE OF DUNE ARE GIVEN IN TABLE ON SHEET C-10.
3. CROSS SECTIONS ARE SHOWN ON SHEETS C-301 TO C-303.



WATCH LINE STA. 60+00, SHEET C-2

LOUISIANA HWY 1

**GULF OF MEXICO**

RECONSTRUCT DUNE TO CROWN  
ELEV. 13.5' AND RENOURISH BEACH  
EXIST. CLAY BURRITO CORE TO REMAIN

LAURA LANE

OLIVER LANE

**EXIST.**

[illegible]

GRAND ISLE AND VICINITY  
REHABILITATION OF HURRICANE  
GUSTAV AND HURRICANE IKE DAMAGE  
JEFFERSON PARISH, LOUISIANA

GENERAL PLAN  
STA. 2+00 - 60+00

**SHEET  
IDENTIFICATION  
C-1**

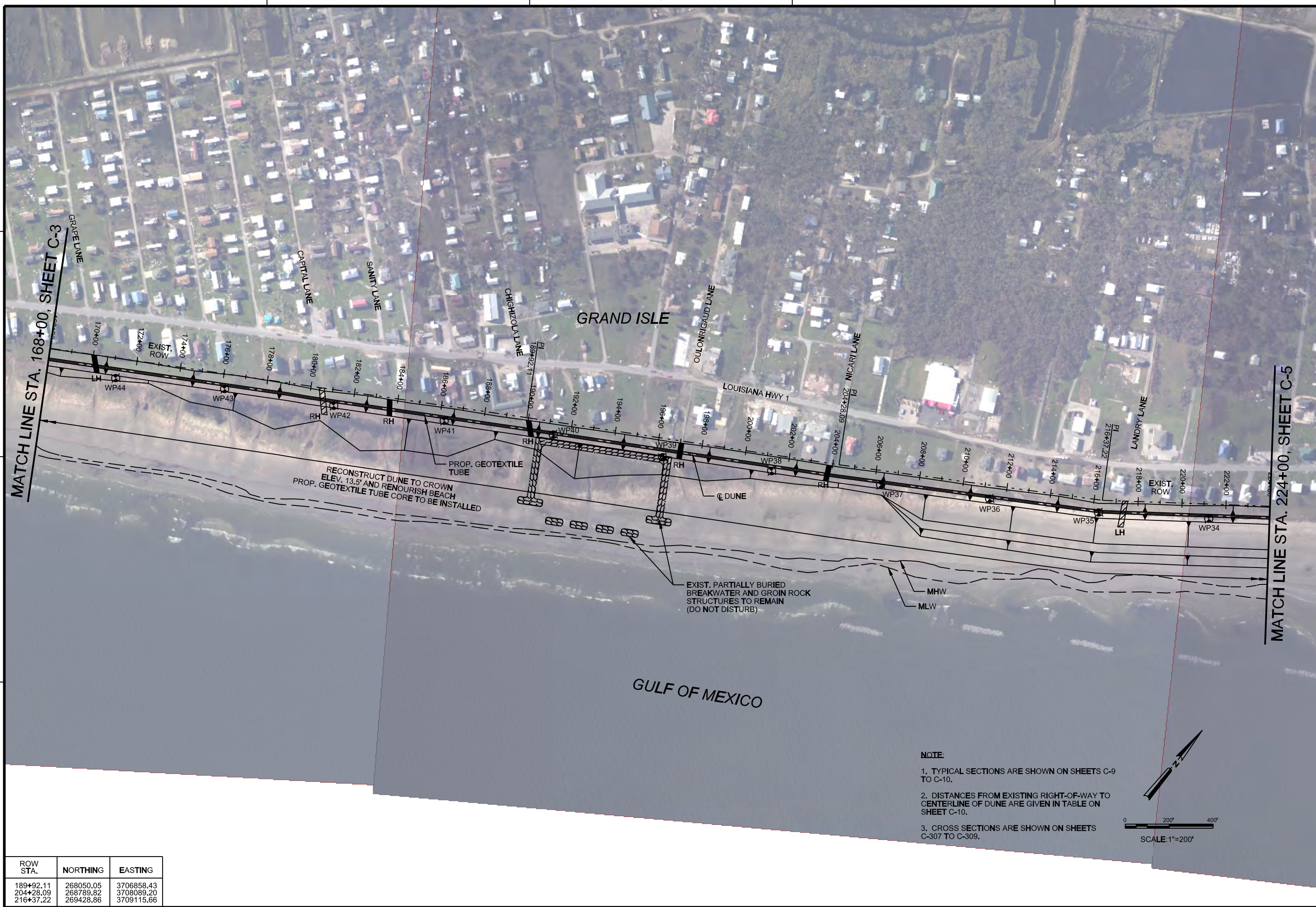












ROW STA.	NORTHING	EASTING
189+92.11	268050.05	3706858.43
204+28.09	268789.82	3708089.20
216+37.22	269428.86	3709115.66

[illegible]



ROW STA.	NORTHING	EASTING
230+38.50	270282.96	3710226.56
241+51.80	270903.37	3711150.96
255+09.48	271646.97	3712286.90
272+38.33	272624.03	3713713.18

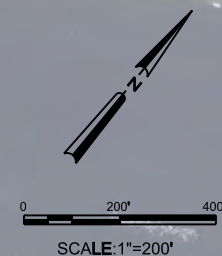
MATCH LINE STA. 224+00, SHEET C-4

## GRAND ISLE

*GULF OF MEXICO*

**NOTE:**

1. TYPICAL SECTIONS ARE SHOWN ON SHEETS C-9 TO C-10.
2. DISTANCES FROM EXISTING RIGHT-OF-WAY TO CENTERLINE OF DUNE ARE GIVEN IN TABLE ON SHEET C-10.
3. CROSS SECTIONS ARE SHOWN ON SHEETS C-309 TO C-311.



MATCH LINE STA. 278+00, SHEET C-6

U.S. ARMY CORPS OF ENGINEERS NEW ORLEANS DISTRICT NEW ORLEANS, LOUISIANA HURRICANE PROTECTION OFFICE	DESIGNED BY: J. BAILEY	DATE: 02/27/2009
U.S. ARMY CORPS OF ENGINEERS SAINT LOUIS DISTRICT SAINT LOUIS, MISSOURI	DWN BY: M. HANES SUBMITTED BY: R. DANKWORT	QC/CALC NO.: W812P6049-0015 CONTRACT NO.: FILE NUMBER: W812P6049-0015
	FLAT SCALE: 1" = 200'	FILE NAME: W812P6049-0015.dwg

GRAND ISLE AND VICINITY  
REHABILITATION OF HURRICANE  
GUSTAV AND HURRICANE IKE DAMAGE  
JEFFERSON PARISH, LOUISIANA

GENERAL PLAN

STA. 224+00 - 278+00

**SHEET  
IDENTIFICATION  
C-5**

[illegible]







PI STA. = 388+68.42  
NORTHING = 280347.47  
EASTING = 3721896.97  
R = 750.00'  
 $\Delta = 76^{\circ}00'37.44''$   
D =  $7^{\circ}38'21.97''$   
L = 994.97'  
T = 586.07'  
C = 923.60'  
M = 159.03'  
E = 201.83'

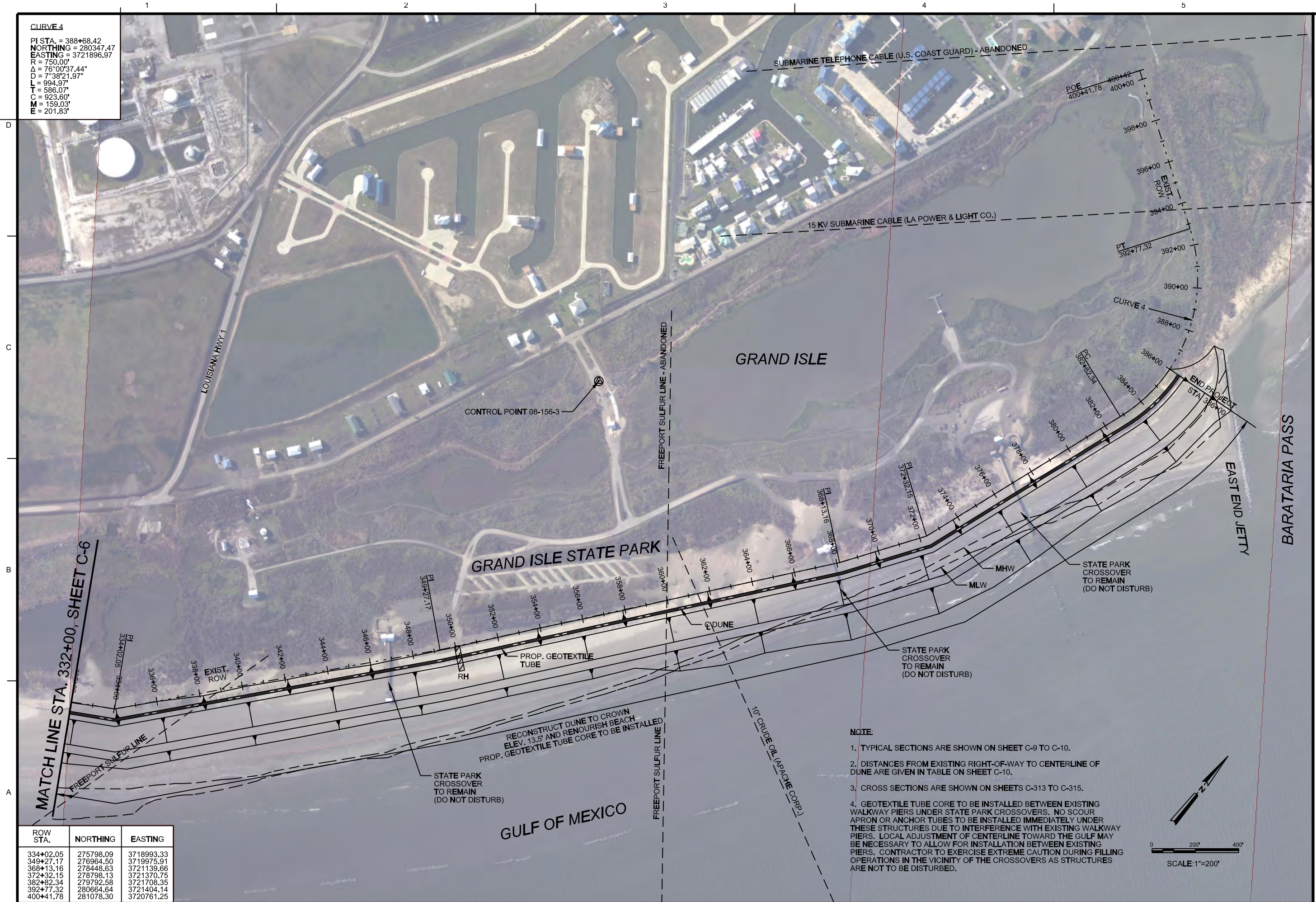
**Army Corps  
Engineers®**  
New Orleans District  
0

[illegible]

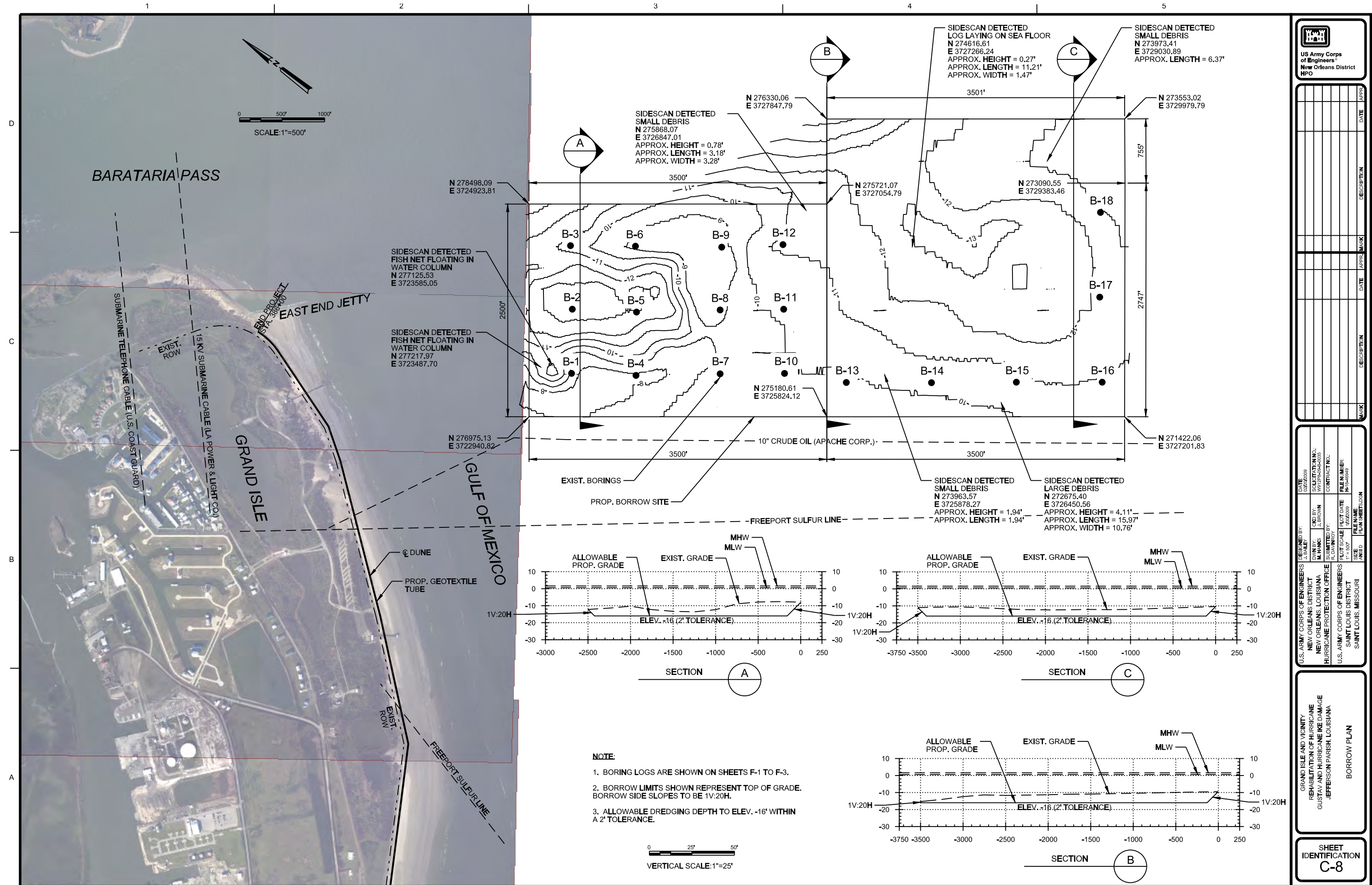
NEW ORLEANS, LOUISIANA	SUBMITTED BY:		CONTRACT NO.:
HURRICANE PROTECTION OFFICE	DRAWN BY: M. HINGS	CHKD BY: J. BROWN	981225-6058-0355
U.S. ARMY CORPS OF ENGINEERS	PLT SCALE	DATE	FILE NUMBER:
SAINT LOUIS DISTRICT	1" = 20'	10/06/00	H-24-0356
SAINT LOUIS, MISSOURI	SHEET	NO.	PLAN SHEET LOG

RESTITUTION OF HURRICANE  
GUSTAV AND HURRICANE IKE DAMAGE  
JEFFERSON PARISH, LOUISIANA

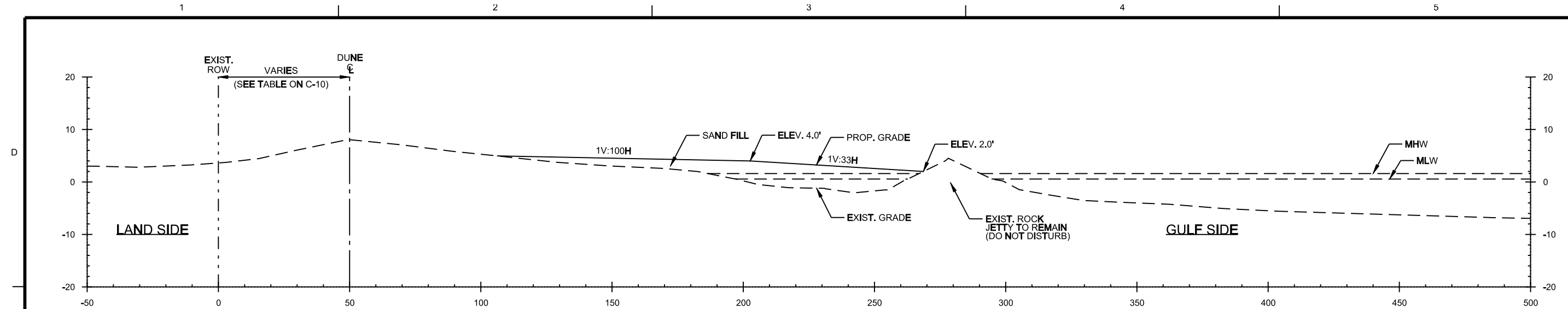
**SHEET  
IDENTIFICATION  
C-7**





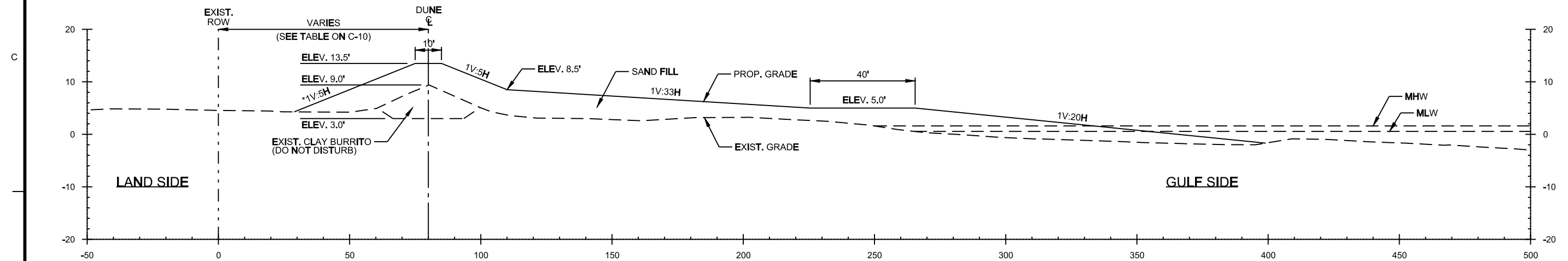






### TYPICAL BEACH FILL SECTION

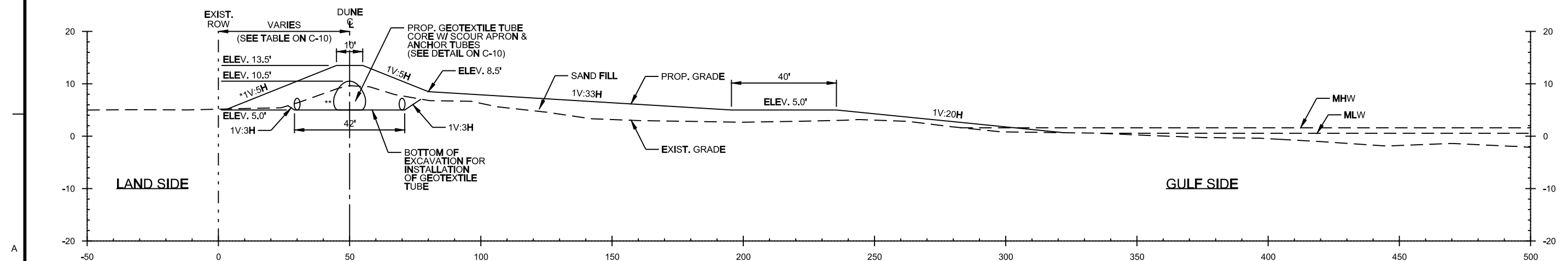
STA. 0+00 - 8+80



**\* LANDSIDE DUNE SLOPE VARIES TO STAY WITHIN  
EXIST. ROW (SEE CROSS SECTIONS)**

### TYPICAL DUNE AND BEACH SECTION W/ EXISTING CLAY BURRITO CORE

STA. 8+80 - 85+00



**\* LANDSIDE DUNE SLOPE VARIES TO STAY WITHIN  
EXIST. ROW (SEE CROSS SECTIONS)**

**\*\*VERTICAL EXAGGERATION MAKES GEOTEXTILE TUBE  
APPEAR ELONGATED IN THE VERTICAL DIRECTION**

### TYPICAL DUNE AND BEACH SECTION W/ PROPOSED GEOTEXTILE TUBE CORE

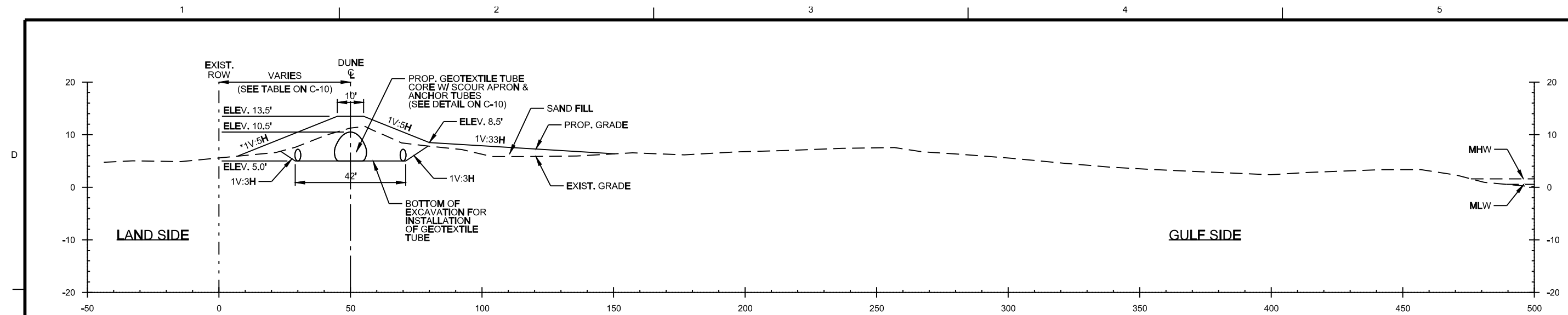
STA. 85+00 - 156+65  
STA. 208+38 - 270+31  
STA. 312+34 - 386+00

[illegible][illegible]

## TYPICAL SECTIONS

**SHEET  
IDENTIFICATION  
C-9**

**HORIZONTAL SCALE:** 1" = 20'  
**VERTICAL SCALE:** 1" = 10'



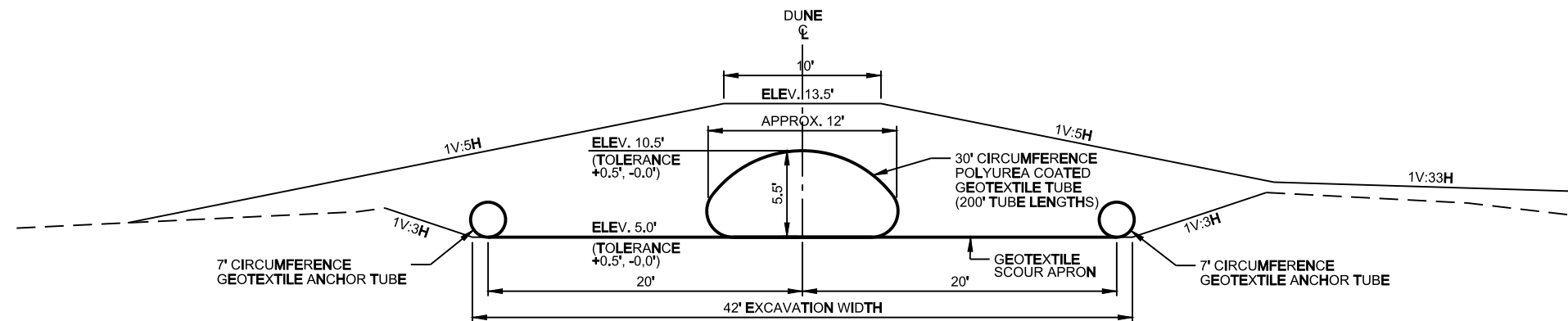
\* LANDSIDE DUNE SLOPE VARIES TO STAY WITHIN  
EXIST. ROW (SEE CROSS SECTIONS)

**\*\*VERTICAL EXAGGERATION MAKES GEOTEXTILE TUBE  
APPEAR ELONGATED IN THE VERTICAL DIRECTION**

**TYPICAL DUNE AND BEACH SECTION**  
**W/ PROPOSED GEOTEXTILE TUBE CORE**

STA. 156+65 - 208+38  
STA. 270+31 - 312+34

**HORIZONTAL SCALE:** 1" = 20'  
**VERTICAL SCALE:** 1" = 10'



## GEOTEXTILE TUBE DETAIL

**SCALE:** 1" = 5'

**NOTE:**

**1. THE BEACH SLOPE OF 1V ON 33 H DOES NOT REPRESENT THE EXPECTED ANGLE OF REPOSE FOR PUMPED MATERIAL UPON INITIAL PLACEMENT. SLOPES MAY BE FLATTER DEPENDING ON MANY FACTORS SUCH AS THE CONSTRUCTION PROCEDURES USED, THE MATERIAL BORROWED, AND TIDAL CONDITIONS. ABOVE THE WATER LINE, THE 1V ON 33H SLOPE REPRESENTS THE DESIRED FINAL DRESSED SLOPE AND PAYMENT LINE. BELOW THE WATER LINE, IT REPRESENTS ONLY THE PAYMENT LINE (SEE SPECIFICATIONS) AND THE ACTUAL SECTION PLACED UNDERWATER AND DETERMINED BY THE CONTRACTOR SHALL BE GREATER THAN OR EQUAL TO THE MINIMUM GRADE SHOWN.**

2. DUE TO LIMITED AVAILABILITY OF SAND FILL AND EXISTING BEACH WIDTH IN SOME AREAS, GULF SIDE RETAINING DIKES WILL BE NECESSARY. THESE DIKES SHALL BE DESIGNED AND CONSTRUCTED BY THE CONTRACTOR SO AS TO RETAIN AS MUCH FILL AS PRACTICAL.

**3. THE PLACEMENT OF SAND FILL MAY BE REQUIRED PRIOR TO CONSTRUCTION OF DIKES. MATERIAL FOR DIKES SHALL BE OBTAINED FROM AREAS TO RECEIVE FILL.**

**4. THE BEACH IS CONTINUALLY BUILDING AND ERODING, AND THE LATEST SECTIONS MAY NOT SHOW EXACT CONDITIONS.**

RIGHT OF WAY STATION	DISTANCE FROM C OF DUNE TO RIGHT OF WAY BASELINE
8+80 - 28+05.69	60'
28+05.69 - 41+38.67	TRANSITION
41+38.67 - 85+00	80'
85+00 - 86+00	TRANSITION
86+00 - 134+00	50'
134+00 - 135+00	TRANSITION
135+00 - 155+00	52.5'
155+00 - 156+00	TRANSITION
156+00 - 179+00	50'
179+00 - 180+00	TRANSITION
180+00 - 230+00	52.5'
230+00 - 231+00	TRANSITION
231+00 - 386+00	50'

**ALL TRANSITIONS SHALL BE UNIFORM**



**U.S. Army Corps  
of Engineers®**  
New Orleans District  
PO

[illegible]

HURRICANE PROTECTION OFFICE		U.S. ARMY CORPS OF ENGINEERS	
NEW ORLEANS DISTRICT		SAINT LOUIS DISTRICT	
NEW ORLEANS, LOUISIANA		SAINT LOUIS, MISSOURI	
4-DIGIT 02424009	DATE 09/09/09	DESIGN 1507009	FLAT SCALE 1" = 20' HOR
PROJECT NO. WV-1507009	DESIGNED BY J. BROWN	CHECKED BY M. HANES	PLANT SCALE 1" = 20' HOR
SUBMITTED BY R. D. MURPHY		FLAT SCALE 1" = 20' HOR	
CONTRACT NO.		PLAN NUMBER H-164849	
SHEET NO.		TOTAL SHEETS 1 OF 1	

**REHABILITATION OF HURRICANE  
GUSTAV AND HURRICANE IKE DAMAGE  
JEFFERSON PARISH, LOUISIANA**

### GEOTEXTILE TUBE DETAIL

**SHEET  
IDENTIFICATION  
C-10**







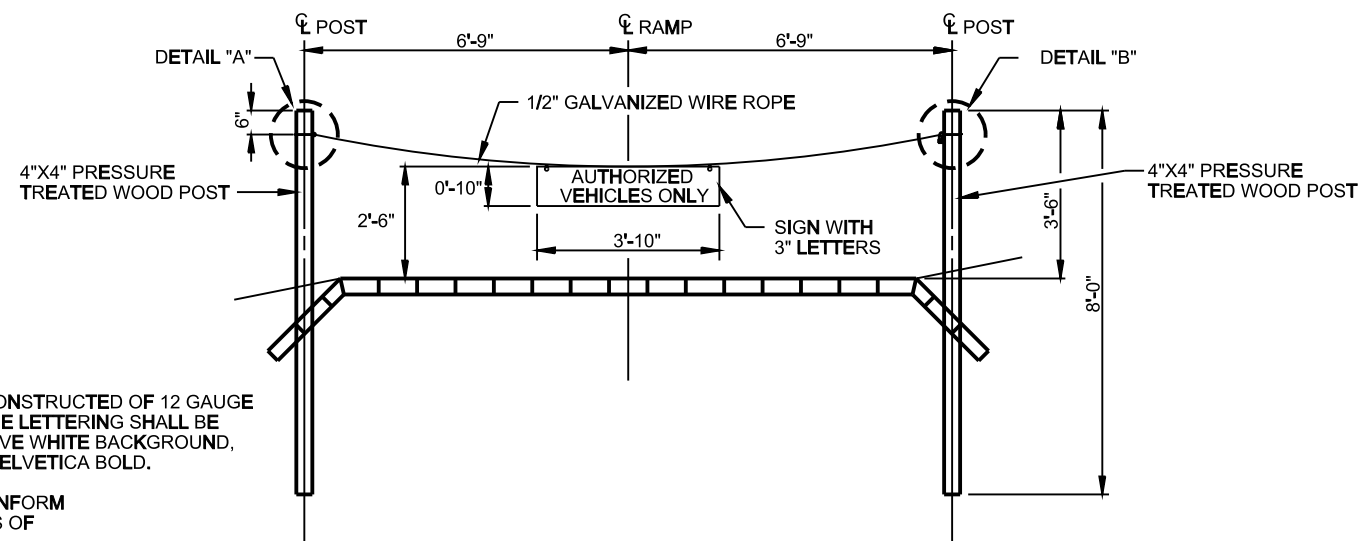


[illegible]

U.S. ARMY CORPS OF ENGINEERS NEW ORLEANS DISTRICT NEW ORLEANS, LOUISIANA HURRICANE PROTECTION OFFICE		DRAWN BY: J. BROWN CHECKED BY: M. HANGS SUBMITTED BY: J. HANWORTH DATE: 12/21/2009		CALCULATION NO.: W912P9-00-0005 CONTRACT NO.: H-46246
U.S. ARMY CORPS OF ENGINEERS SAINT LOUIS DISTRICT SAINT LOUIS, MISSOURI		FILE NAME: 100009 SIZE: 100009 SHEET NO.: 100009	FILE NUMBER: H-46246 SHEET DATE: 12/21/2009 SHEET NO.: 100009	

**EMERGENCY VEHICLE CROSSOVER**

**SHEET  
IDENTIFICATION  
C-14**

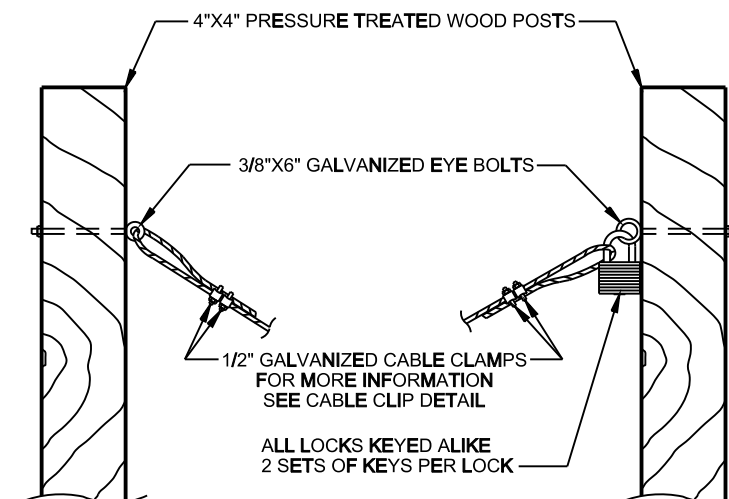


**NOTE:**  
THE SIGN SHALL BE CONSTRUCTED OF 12 GAUGE  
6061-T6 ALUMINUM. THE LETTERING SHALL BE  
BLACK ON A REFLECTIVE WHITE BACKGROUND,  
WITH LETTER STYLE HELVETICA BOLD.

WIRE ROPE SHALL CONFORM  
TO THE REQUIRMENTS OF  
ASTM A 603

## CABLE GATE DETAIL

**SCALE:** 1" = 2'

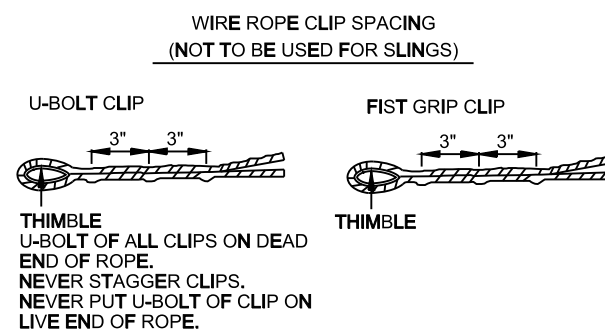


### DETAIL "A"

**SCALE:** 1" = 4"

### DETAIL "B"

**SCALE:** 1" = 4"

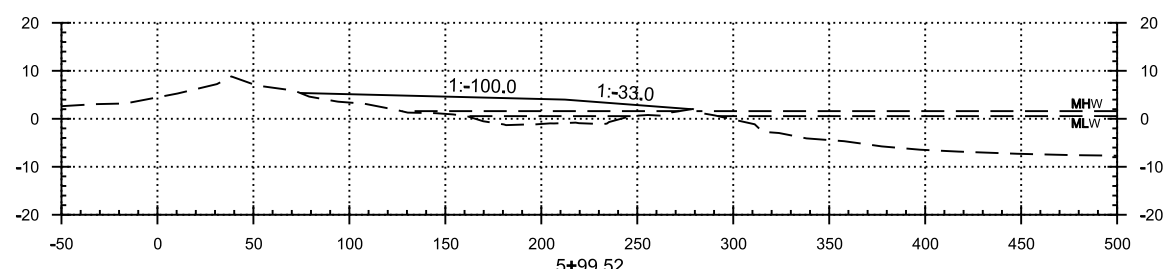
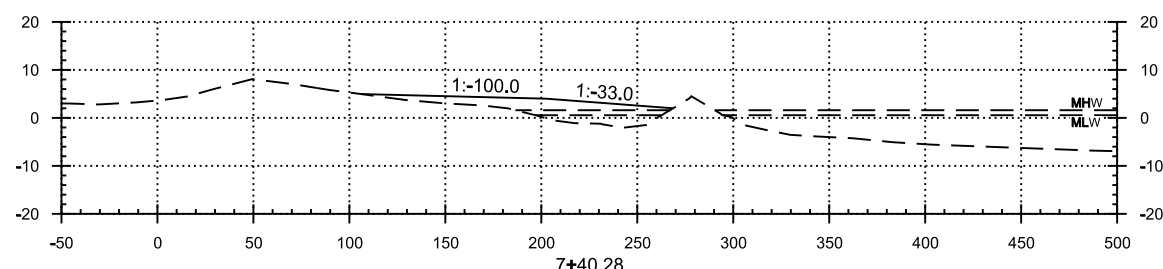
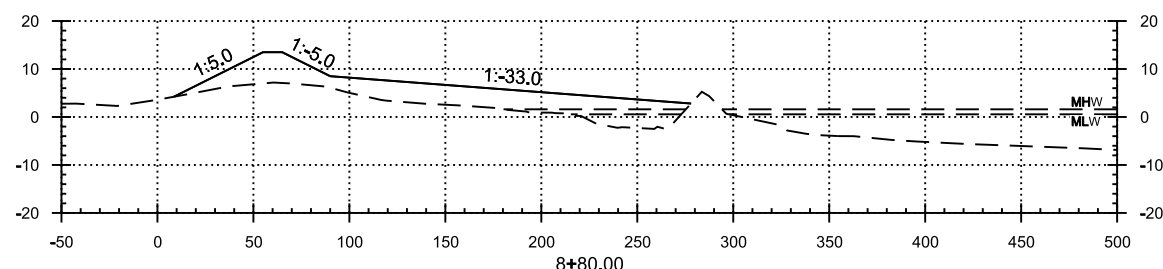
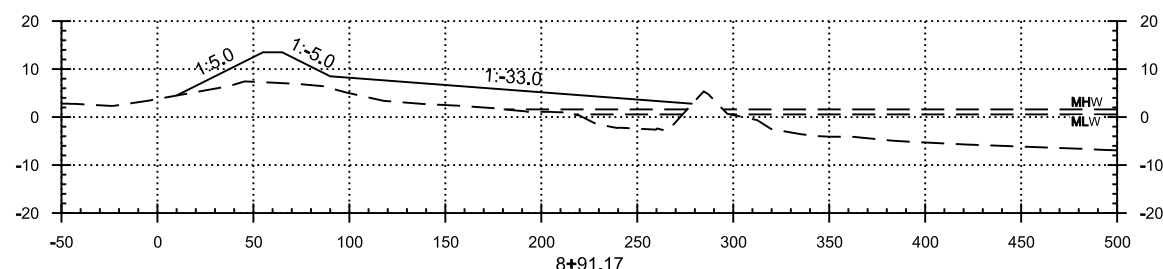
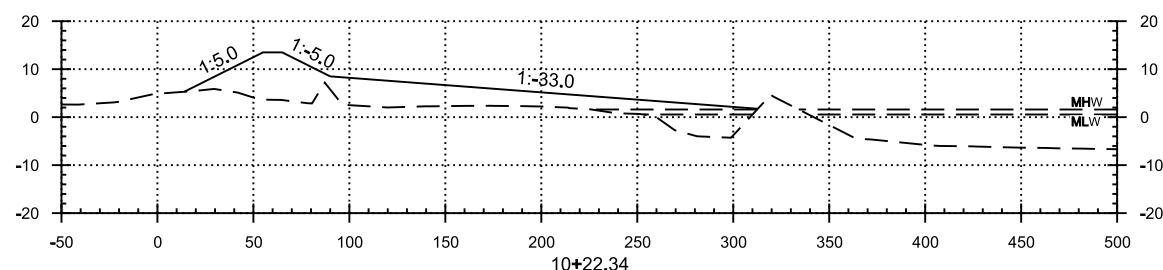
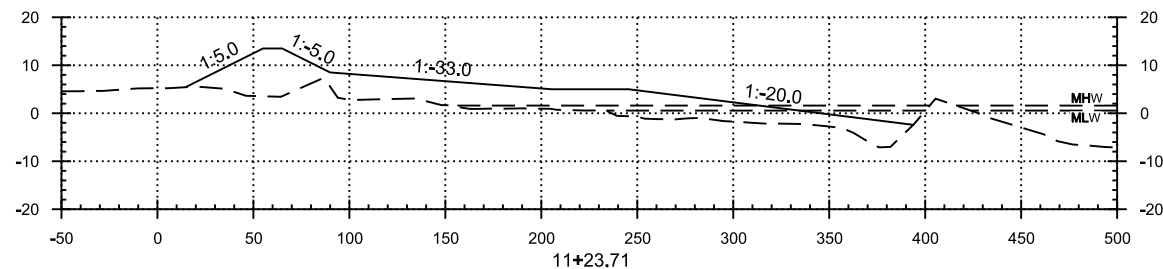
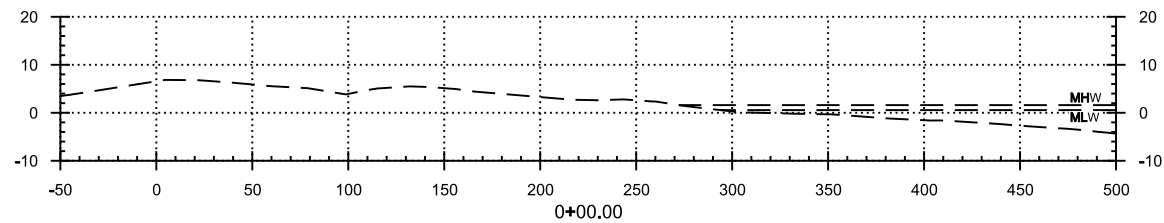
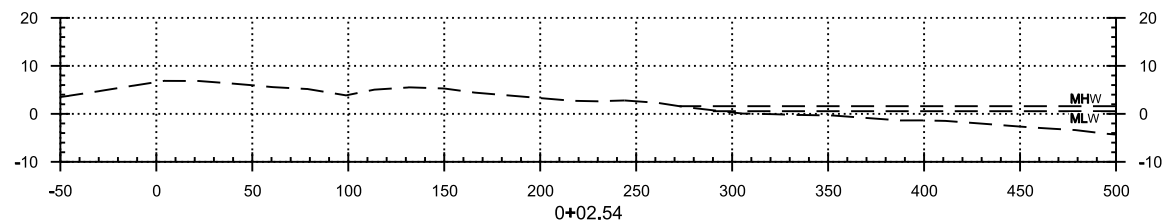
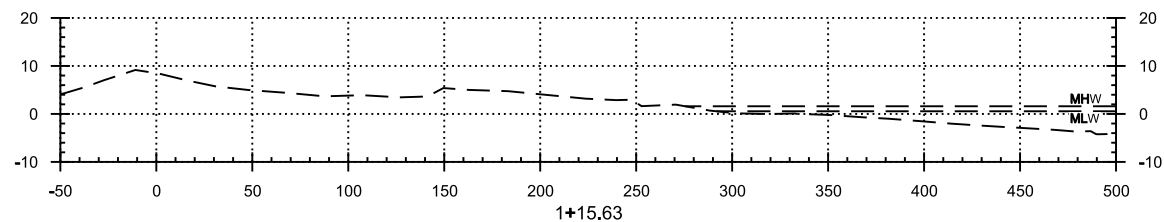
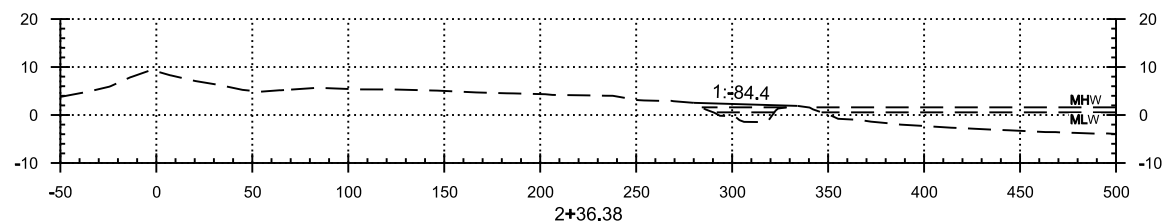
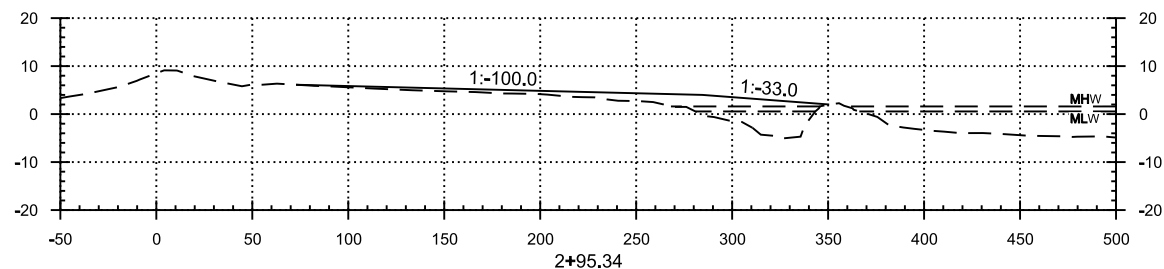
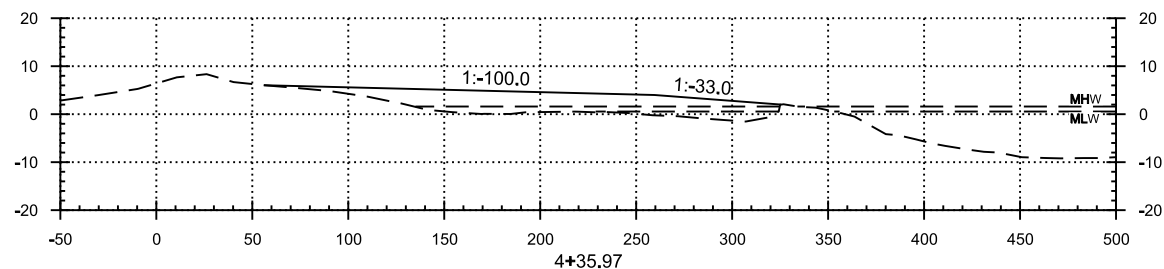


**NOTE:**  
IT IS UP TO THE CONTRACTOR  
TO DETERMINE WHICH CLIP TO USE

## CABLE CLIP

NTS

D

[illegible]

U.S. ARMY CORPS OF ENGINEERS NEW ORLEANS DISTRICT NEW ORLEANS, LOUISIANA HURRICANE PROTECTION OFFICE	DESIGNED BY: J. BAILEY	DATE: 02/27/2009	SPECIFICATION NO.: W913PG-05-0035	CONTRACT NO.:	FILE NUMBER: FLN-4849	SHEET NO.:
U.S. ARMY CORPS OF ENGINEERS SAINT LOUIS DISTRICT SAINT LOUIS, MISSOURI	DWN BY: M. HANKS	QC'D BY: J. BROWN	PLAN DATE: 11/20/08	PLAN SCALE: 1" = 50' HOR	CROSS SECTION NAME: ANSI D	CROSS SECTION SHEET NO.:

CROSS SECTIONS

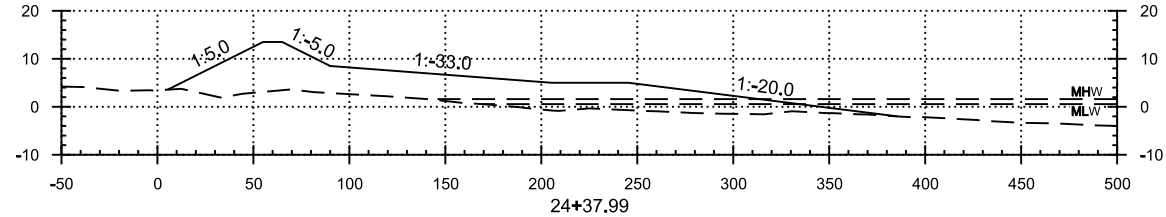
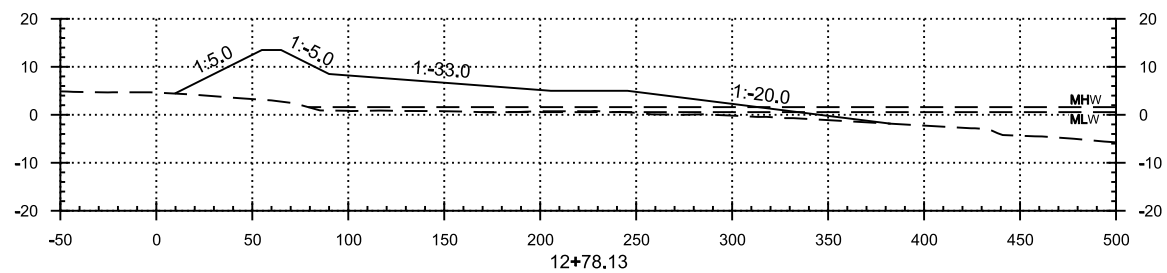
**SHEET  
IDENTIFICATION  
C-301**

**HORIZONTAL SCALE:** 1" = 50'  
**VERTICAL SCALE:** 1" = 20'

U.S. ARMY CORPS OF ENGINEERS NEW ORLEANS DISTRICT NEW ORLEANS, LOUISIANA HURRICANE PROTECTION OFFICE	OWN BY: D. W. SHELLEY	CRD BY: D. BROWN	CALCULATION NO.: W012750-0-0035	CONTRACT NO.:	FILE NUMBER: H-15-48949	FILE NAME: 15000009	SECTION SHEETS: 00N
U.S. ARMY CORPS OF ENGINEERS SAINT LOUIS DISTRICT SAINT LOUIS, MISSOURI	OWNED BY: U.S. ARMY CORPS OF ENGINEERS	CRD BY: U.S. ARMY CORPS OF ENGINEERS					

## CROSS SECTIONS

**SHEET  
IDENTIFICATION  
C-302**

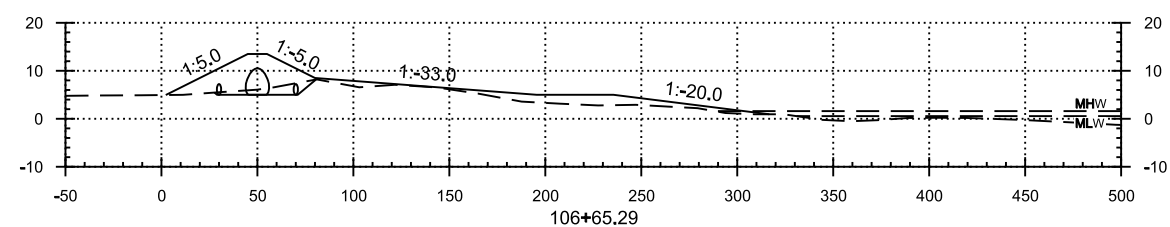
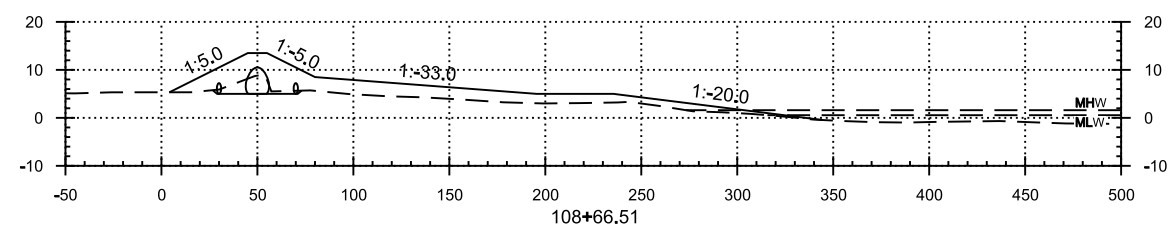
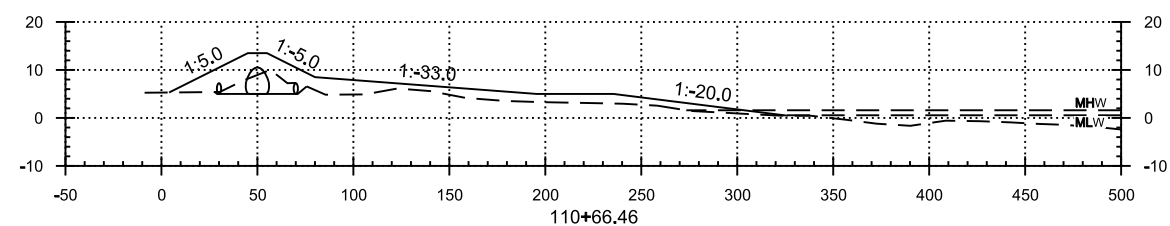
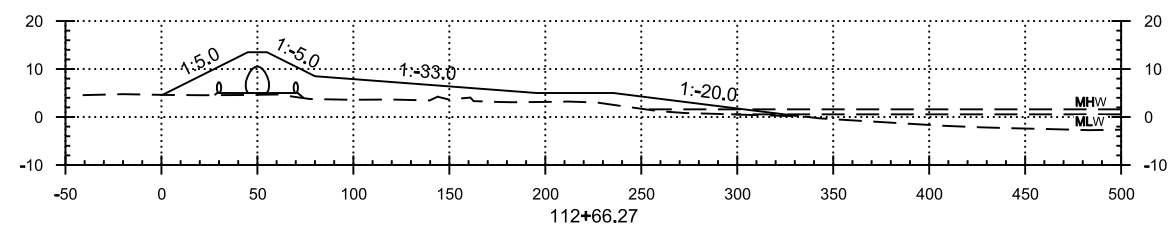
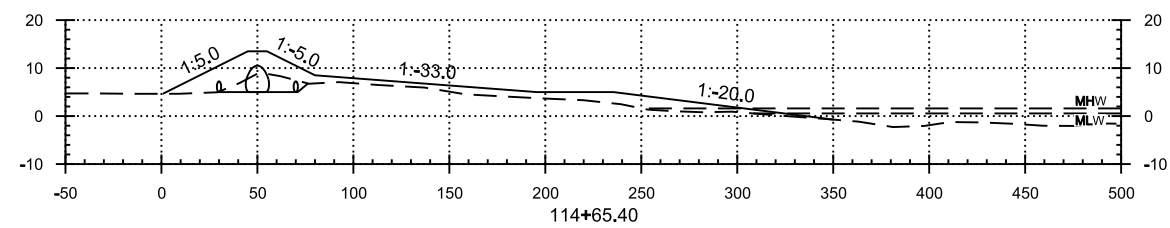
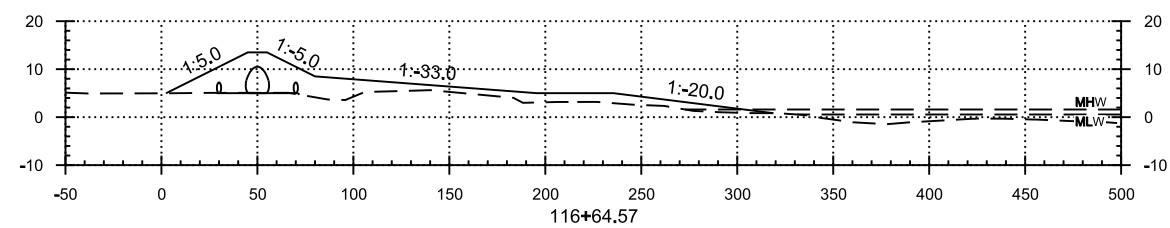
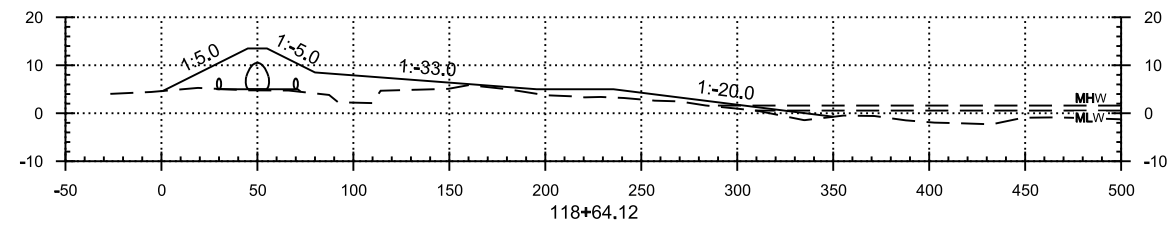
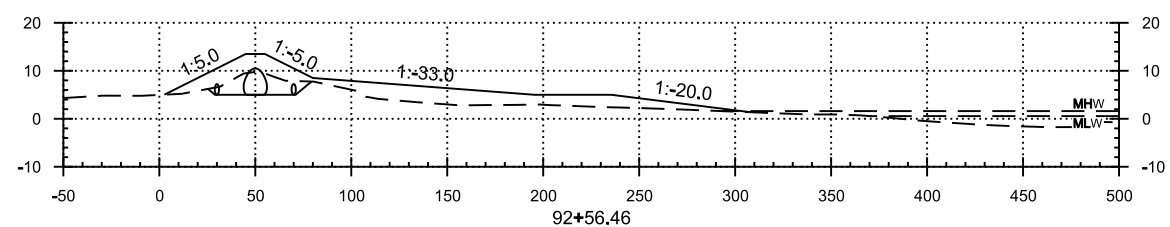
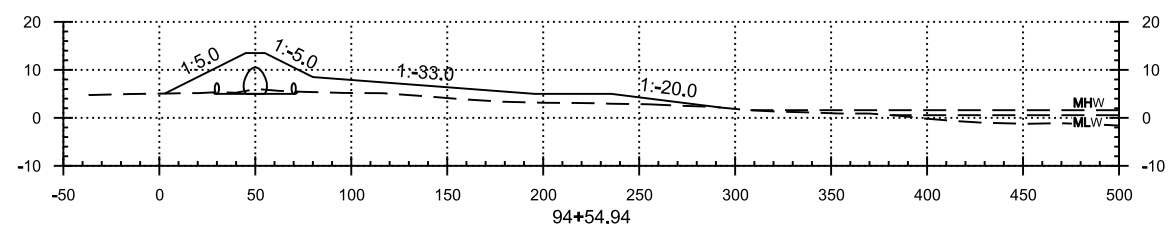
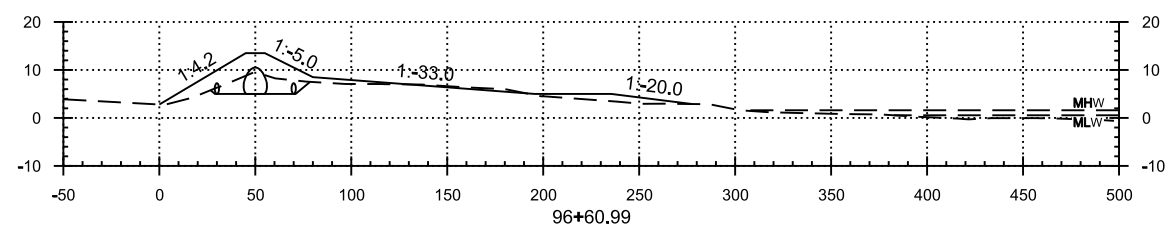
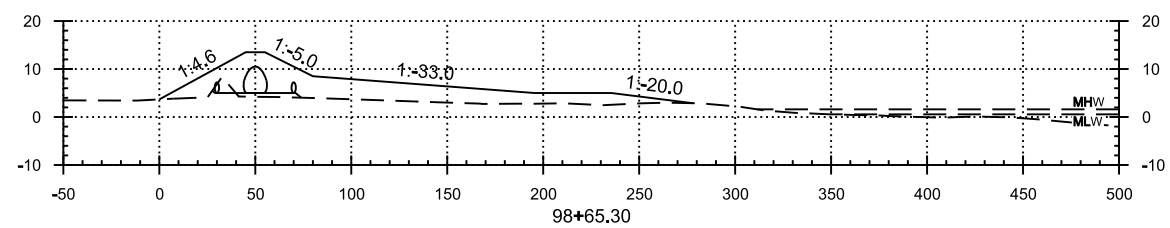
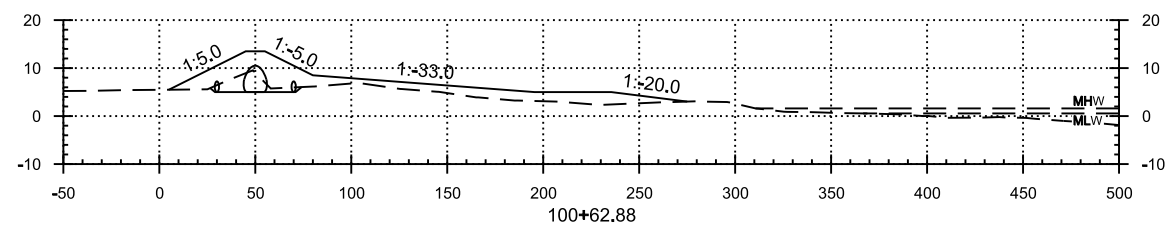
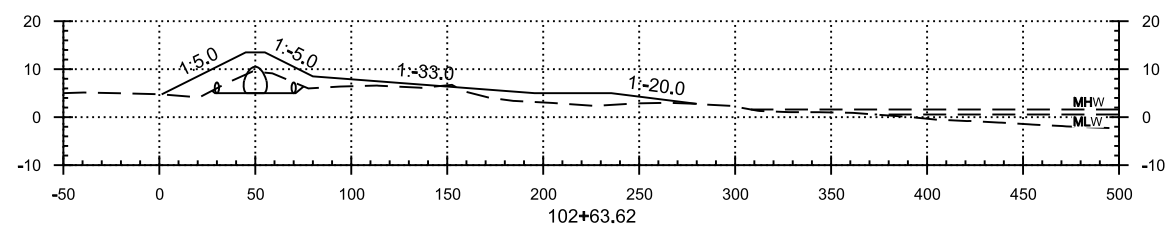
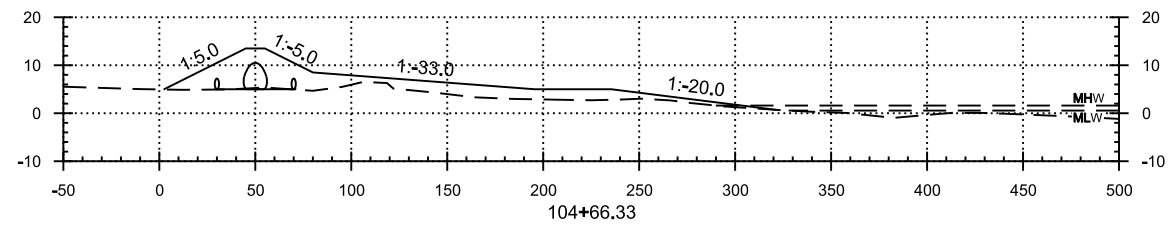


**HORIZONTAL SCALE:** 1" = 50'  
**VERTICAL SCALE:** 1" = 20'









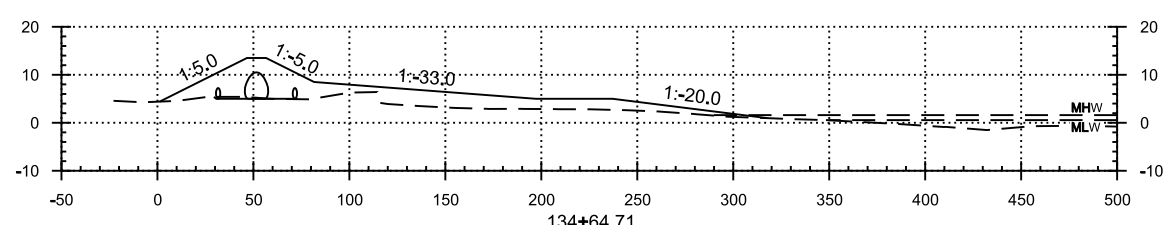
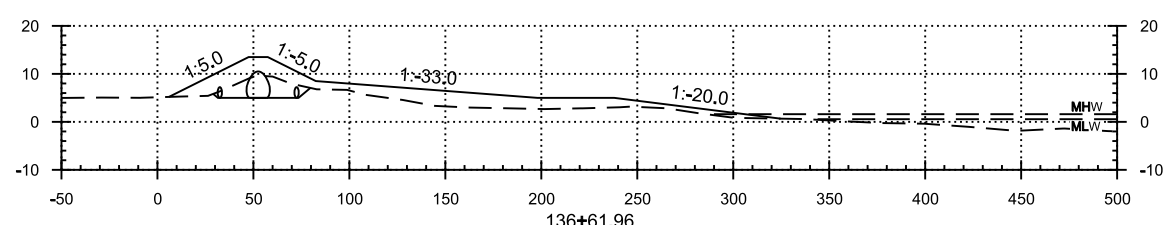
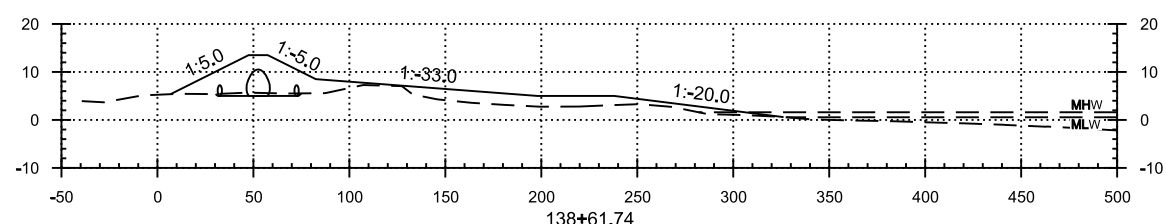
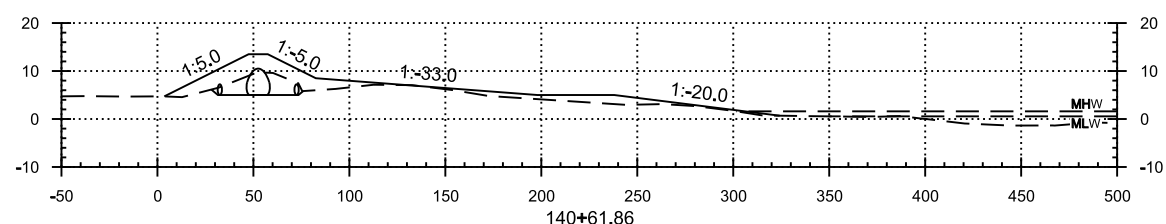
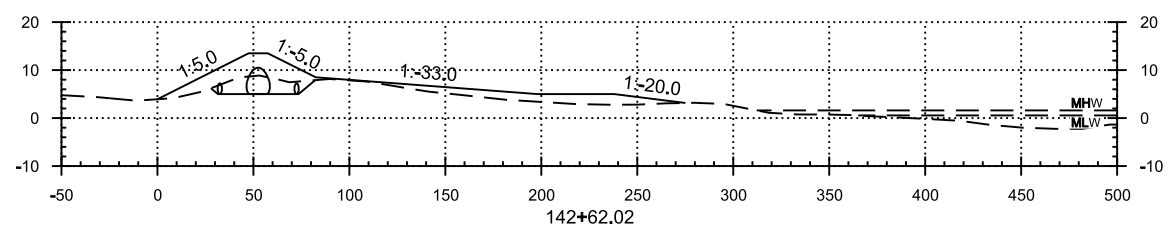
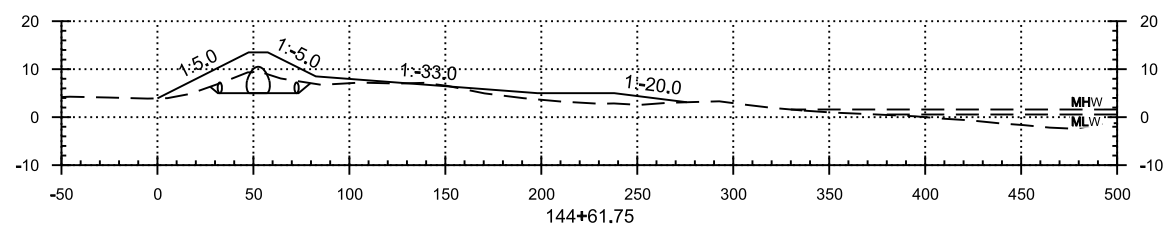
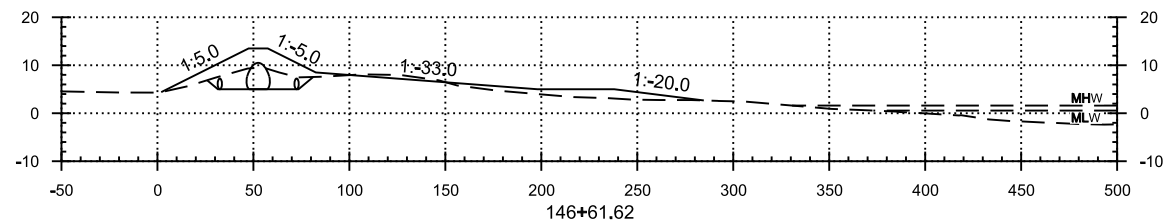
U.S. Army Corps  
Engineers®  
New Orleans District  
PO

[illegible]

U.S. ARMY CORPS OF ENGINEERS SAINT LOUIS DISTRICT SAINT LOUIS, MISSOURI	NEW ORLEANS DISTRICT NEW ORLEANS, LOUISIANA HURRICANE PROTECTION OFFICE OWNER BY: CWD BY: J. BROWN M. H. WING SUBMITTED BY: R. DAVINIKY SOLICITATION NO.: W92739-95-0-0035 CONTRACT NO.: FILE NUMBER: H-16-4849 PLOT SCALE: 1" = 50' HORIZ PLOT DATE: 1/30/00/09 FILENAME: CROSBY SECTION SHEETS.DGN SIZE: A4 (11" X 17")
---	---

## CROSS SECTIONS

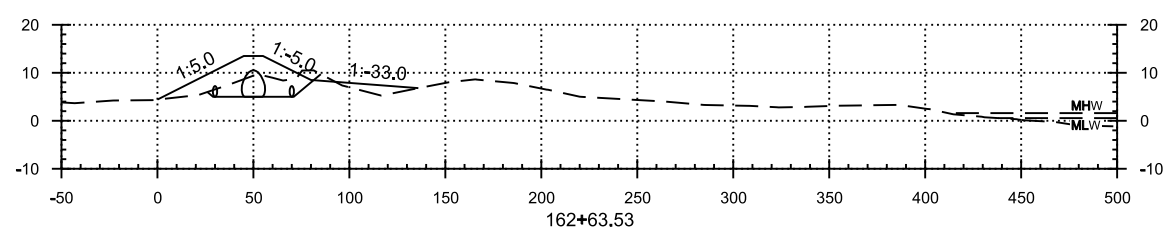
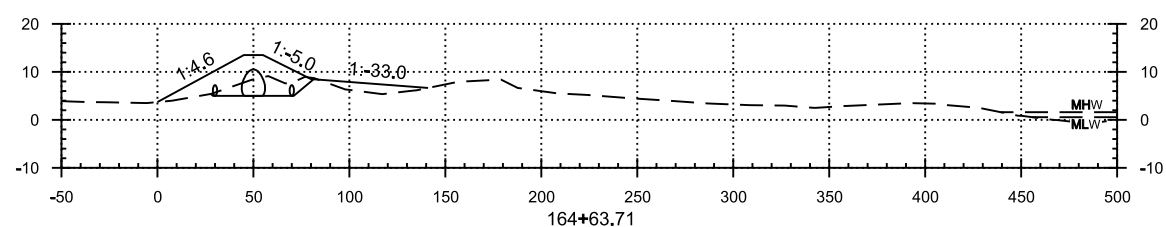
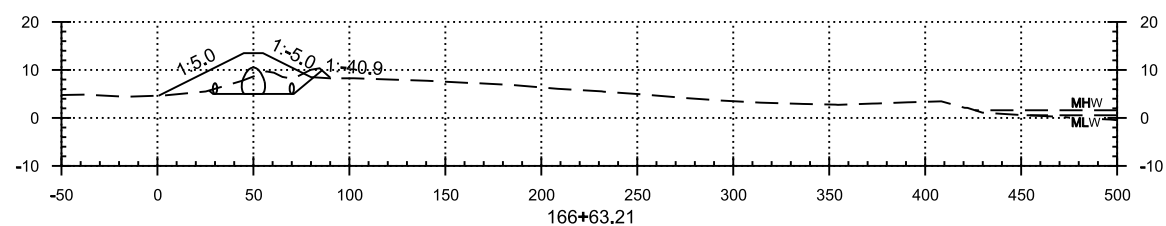
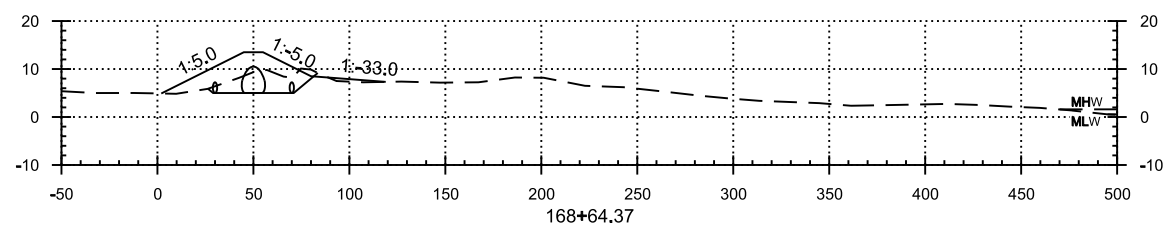
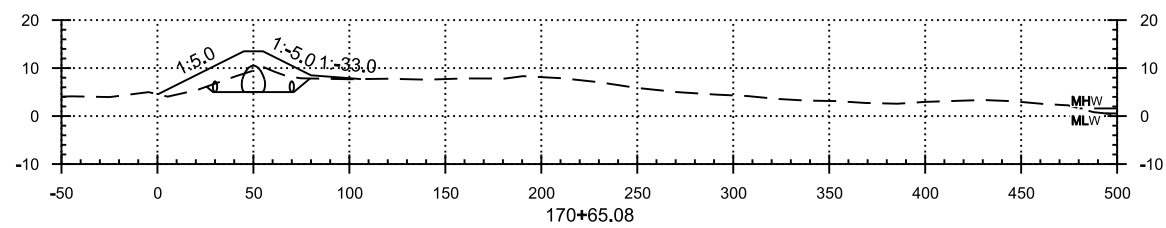
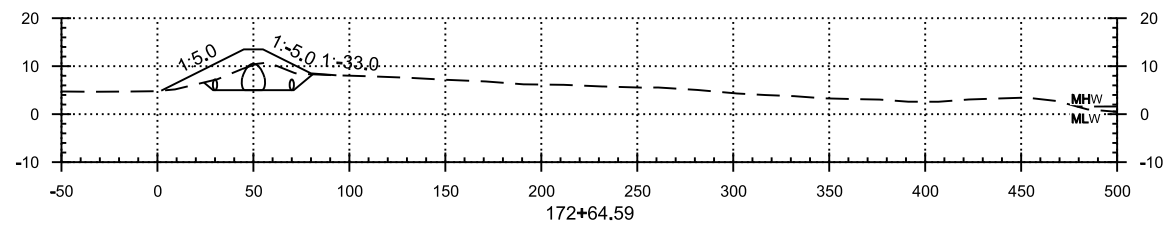
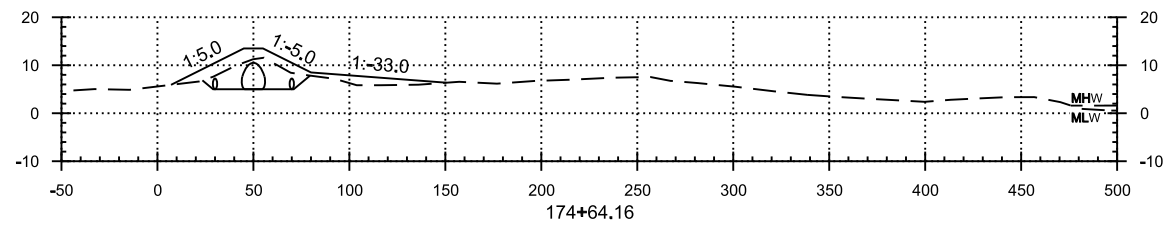
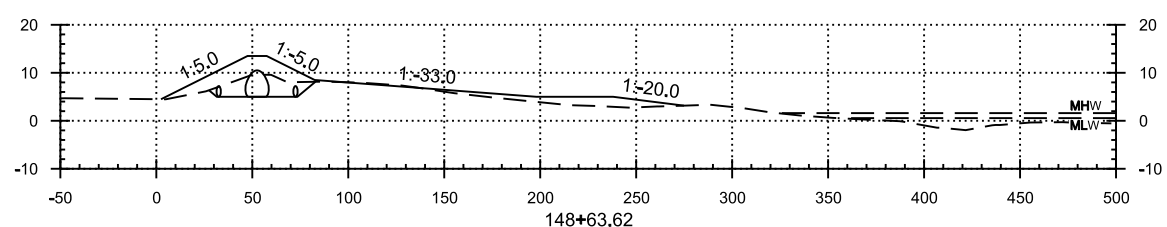
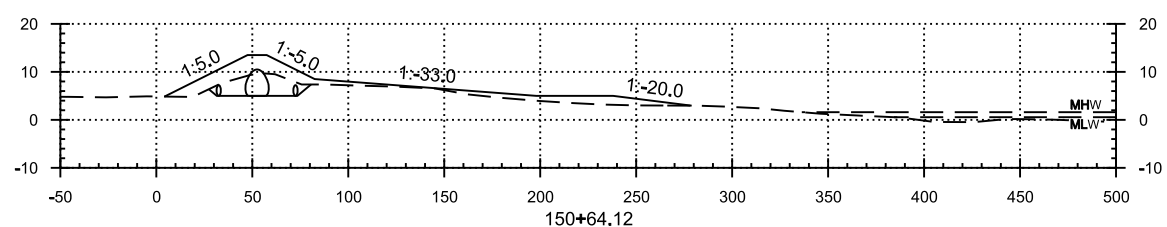
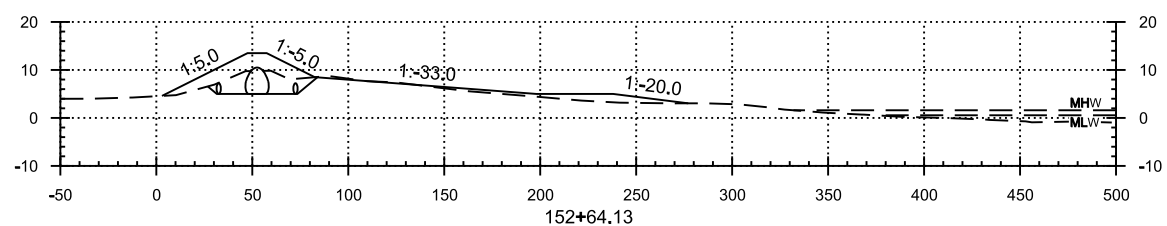
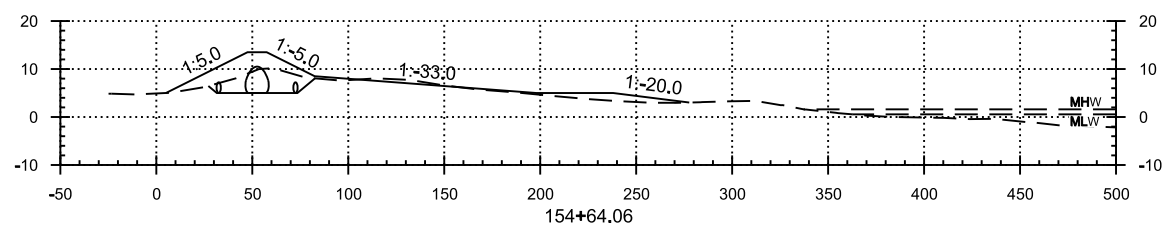
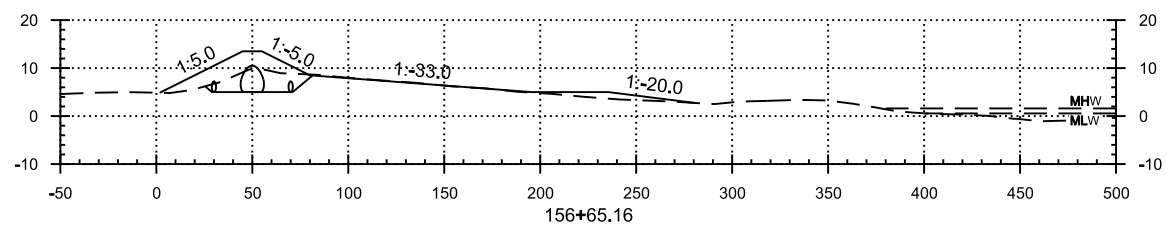
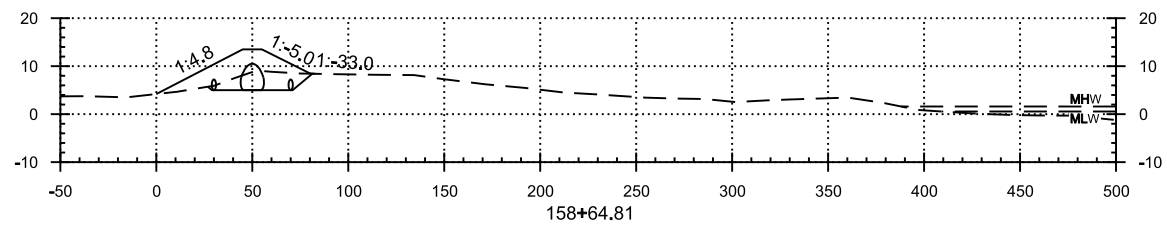
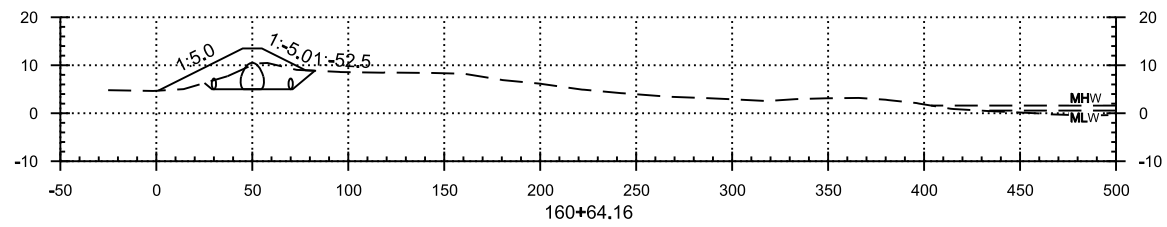
**SHEET  
IDENTIFICATION  
C-305**



US Army Corps  
of Engineers®  
New Orleans District  
HPO

**SHEET  
IDENTIFICATION  
C-306**

**HORIZONTAL SCALE:** 1" = 50'  
**VERTICAL SCALE:** 1" = 20'



C

B

A

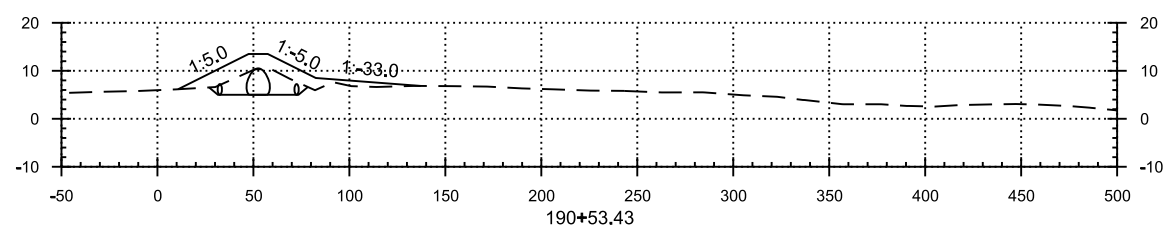
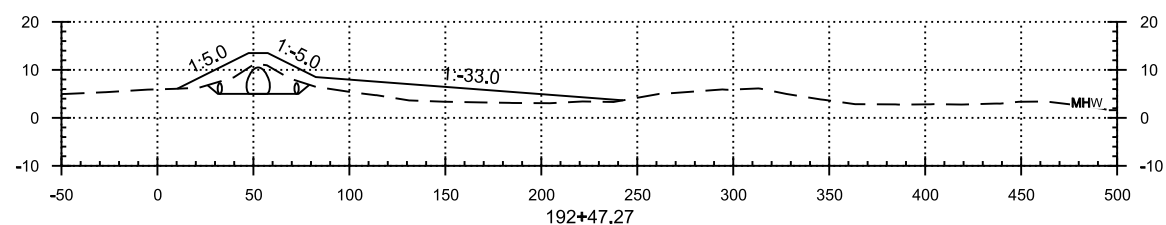
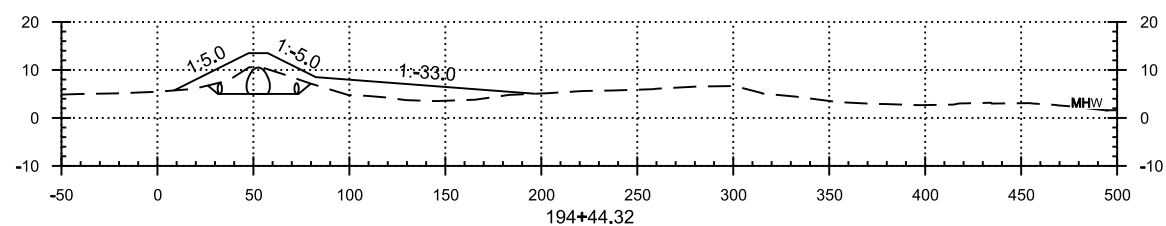
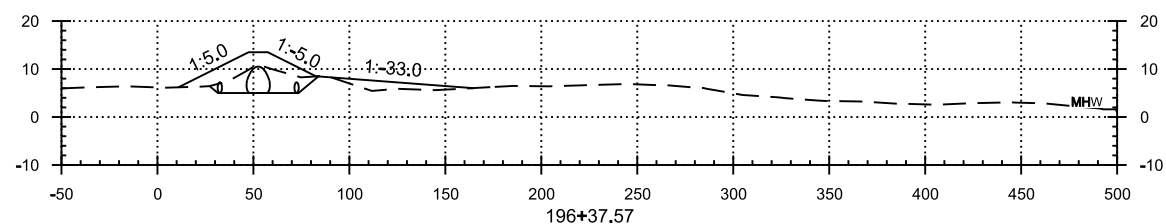
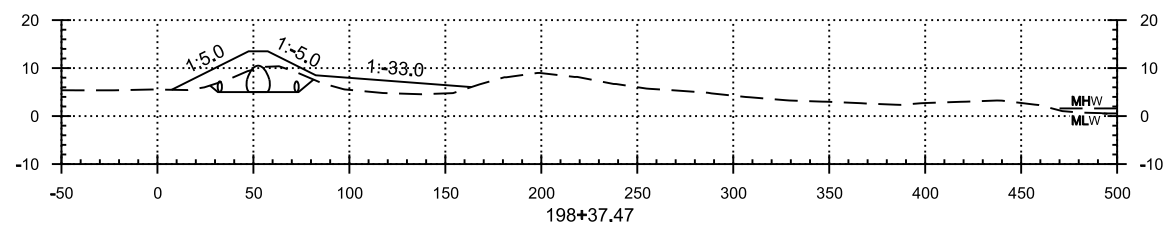
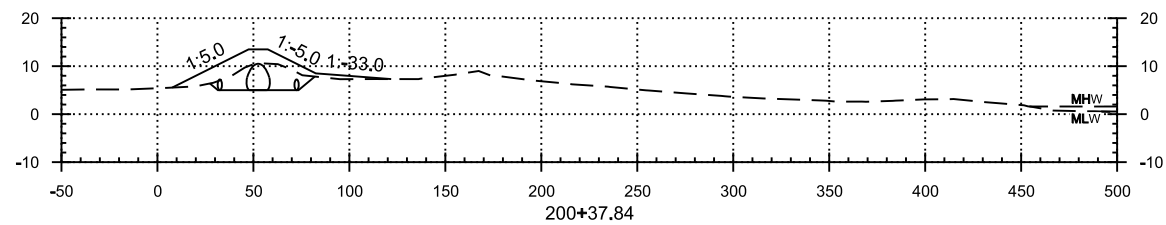
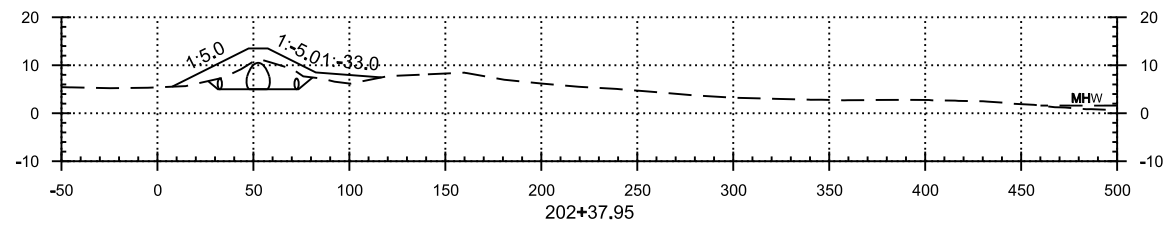
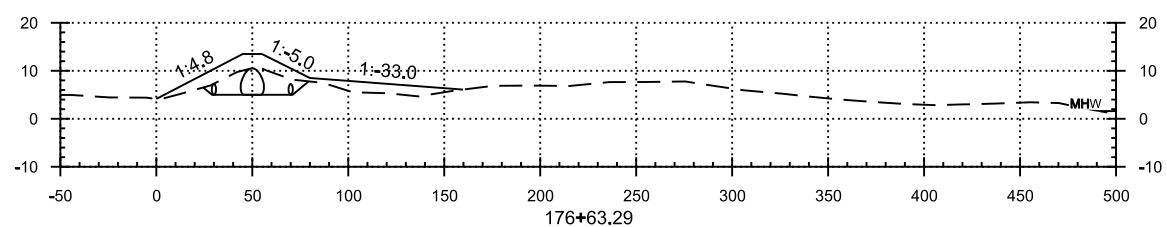
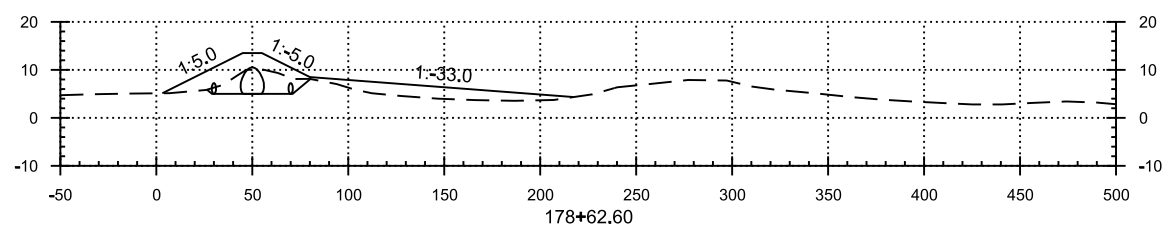
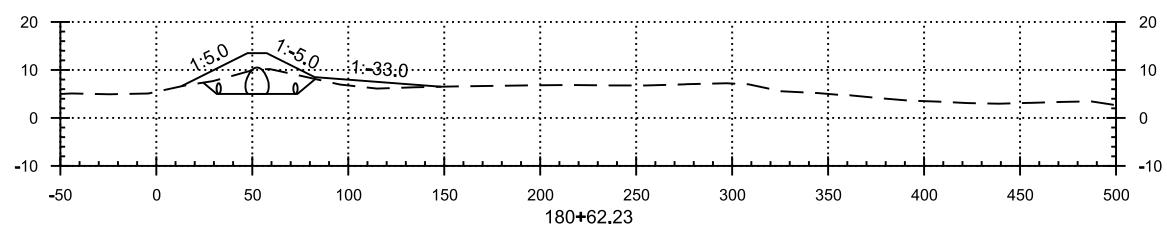
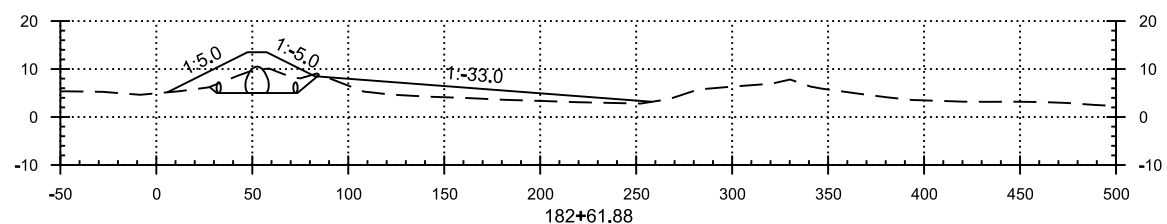
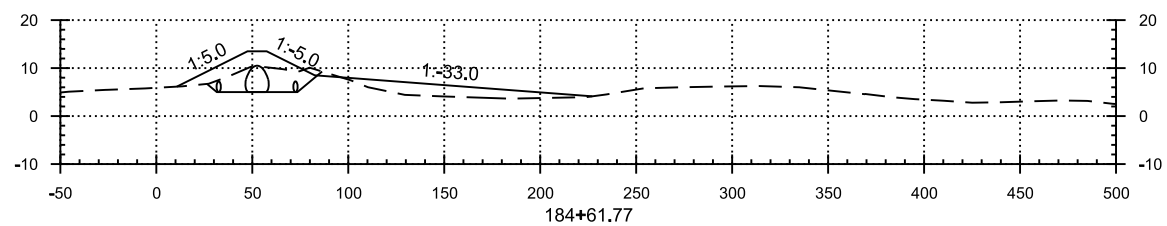
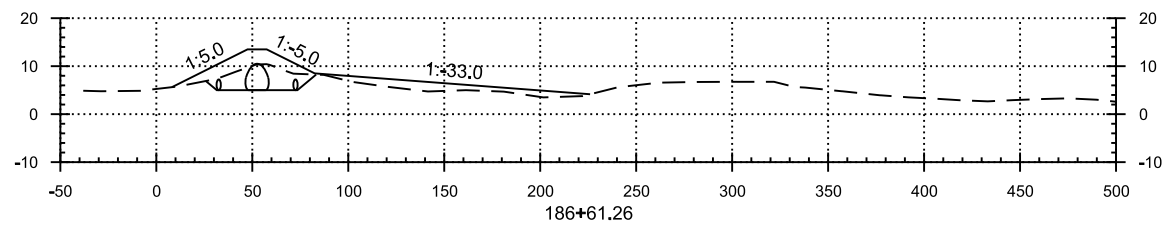
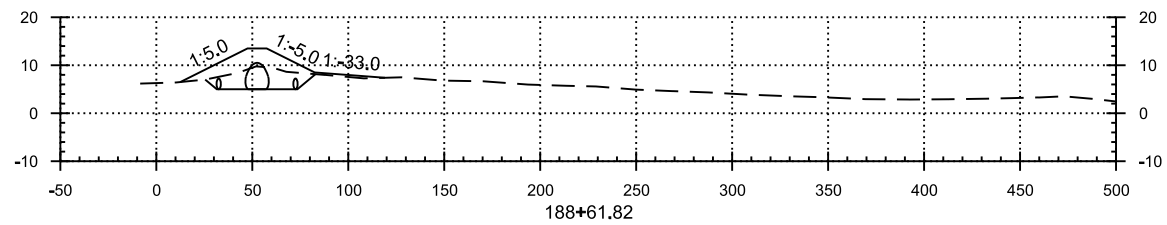
[illegible][illegible]

**REHABILITATION OF HURRICANE  
GUSTAV AND HURRICANE IKE DAMAGE  
JEFFERSON PARISH, LOUISIANA**

**SHEET  
IDENTIFICATION  
C-307**

**ANNOUNCEMENT**





**US Army Corps  
of Engineers®  
New Orleans District  
HPO**

[illegible]

U.S. ARMY CORPS OF ENGINEERS NEW ORLEANS DISTRICT NEW ORLEANS, LOUISIANA HURRICANE PROTECTION OFFICE	DESIGNED BY: J. BAILEY	DATE: 10/22/2009
U.S. ARMY CORPS OF ENGINEERS SAINT LOUIS DISTRICT SAINT LOUIS, MISSOURI	DWN BY: M. HANES	CALCULATION NO.: W1217P64-00-5055
	APPROVED BY: M. HANES	CONTRACT NO.:
	PLotted:	FILE NUMBER: H-(648949)
	DATE:	
	FILE NAME:	

GRAND ISLE AND VICINITY  
REHABILITATION OF HURRICANE  
GUSTAV AND HURRICANE IKE DAMAGE

## CROSS SECTIONS

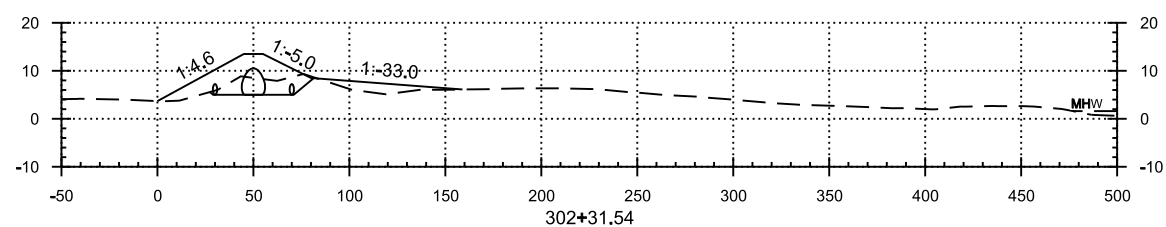
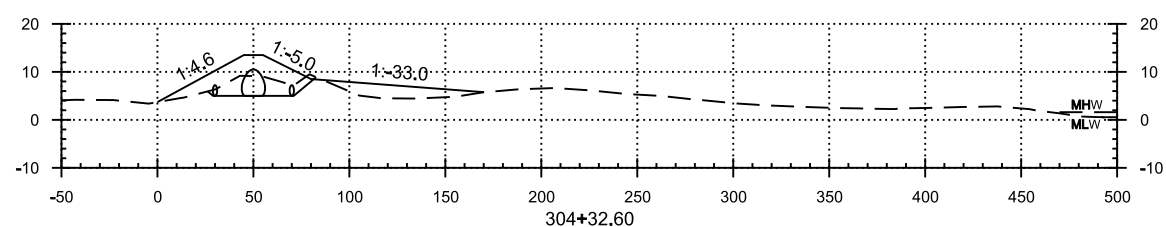
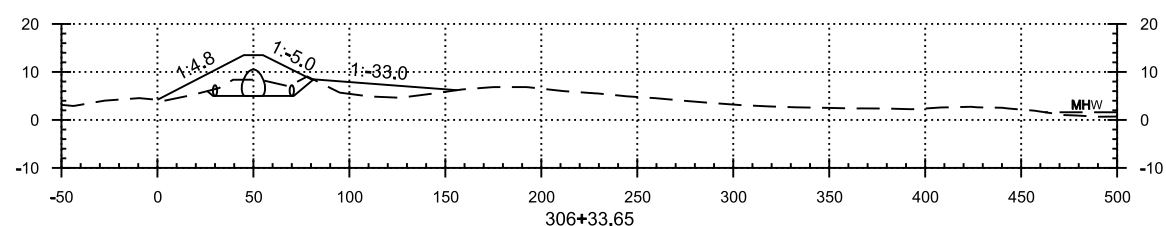
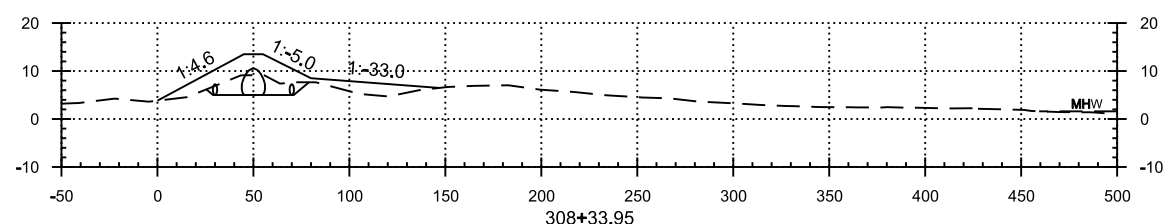
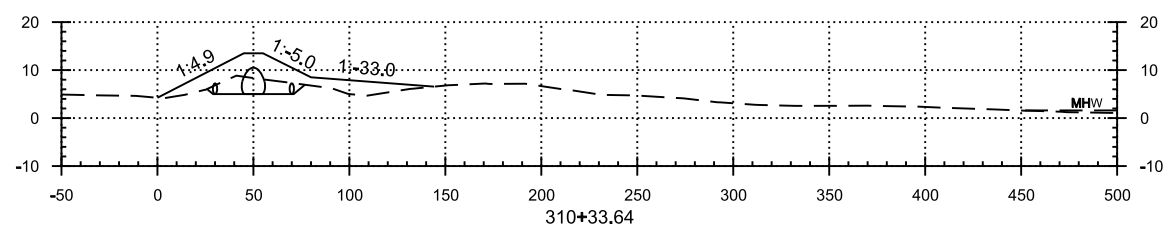
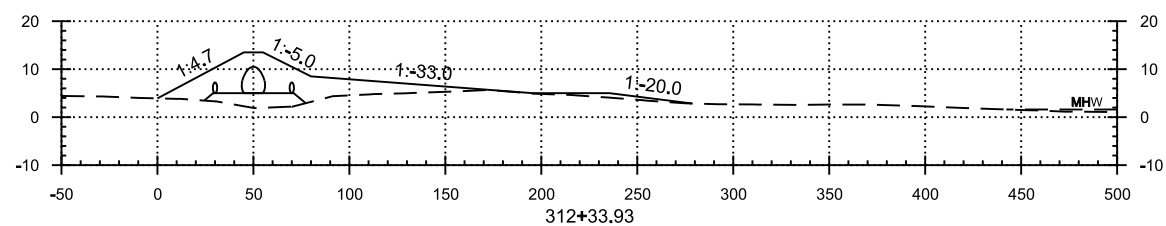
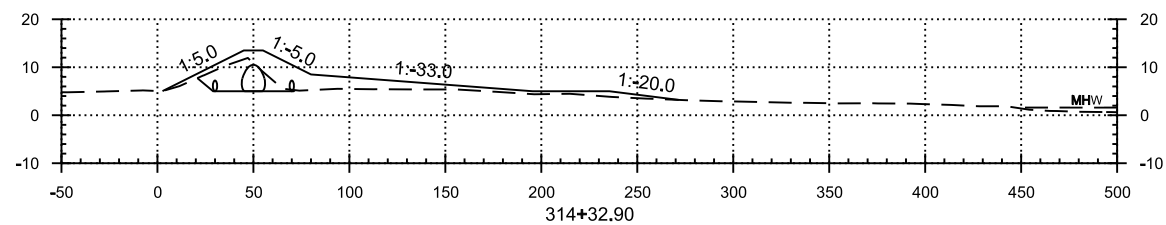
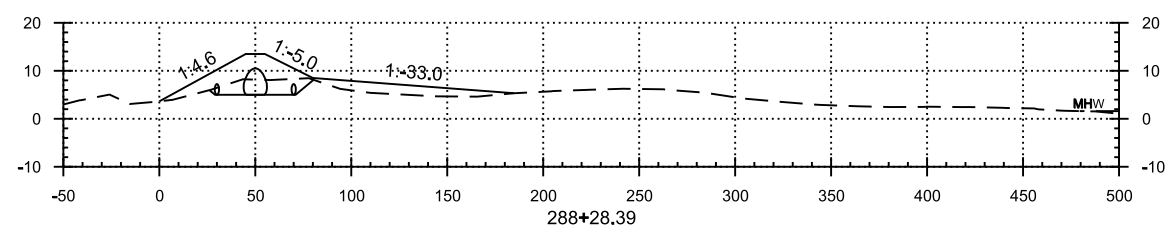
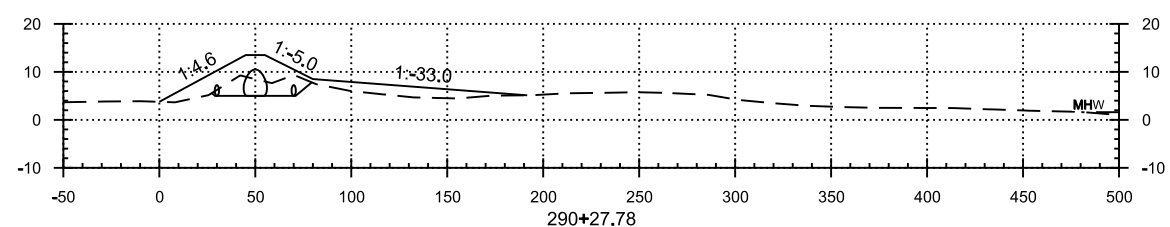
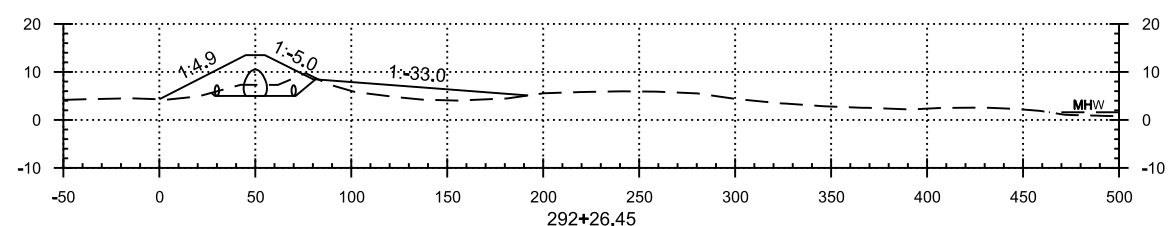
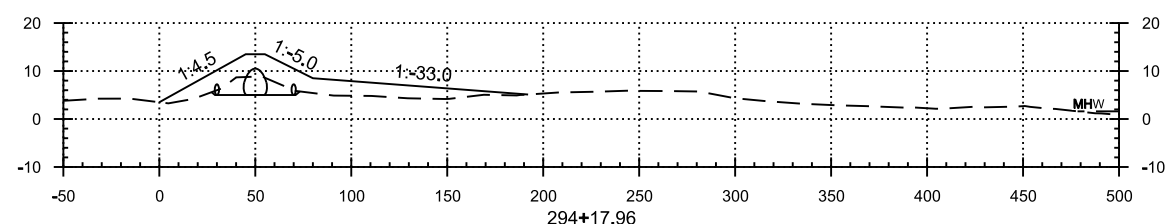
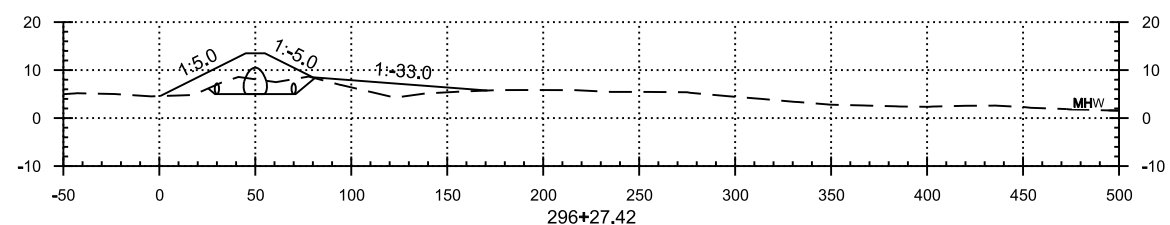
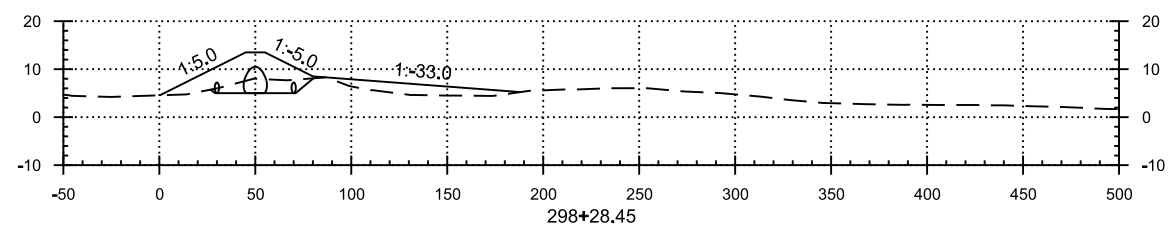
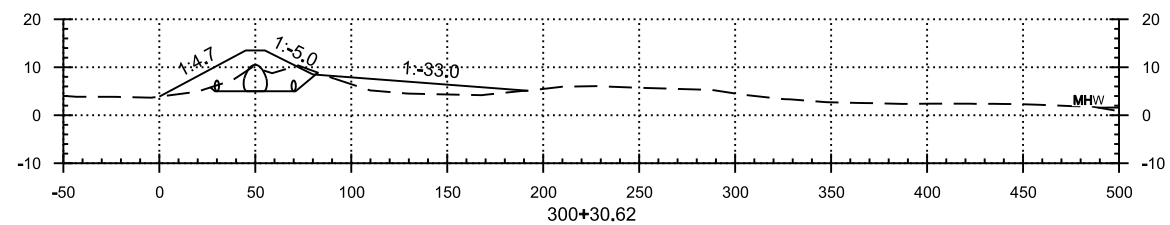
**SHEET  
IDENTIFICATION  
C-308**

**HORIZONTAL SCALE:** 1" = 50'  
**VERTICAL SCALE:** 1" = 20'









C

B

A



**US Army Corps  
of Engineers®  
New Orleans District  
HPO**

---

[illegible]

U.S. ARMY CORPS OF ENGINEERS		DESIGNED BY:		DATE:	
NEW ORLEANS DISTRICT		DYN BY:		02/27/09	
NEW ORLEANS, LOUISIANA		M. PARKS		SOLICITATION NO.:	
HURRICANE PROTECTION OFFICE		J. BROWN		W8729-650-0035	
		R. DUNN		CONTRACT NO.:	
U.S. ARMY CORPS OF ENGINEERS		PLOT SCALE:		FILE NUMBER:	
SAINT LOUIS DISTRICT		1" = 50' HOR.		14-184949	
SAINT LOUIS, MISSOURI		SIZE:		FILE NAME:	
		A		14-184949.DWG	

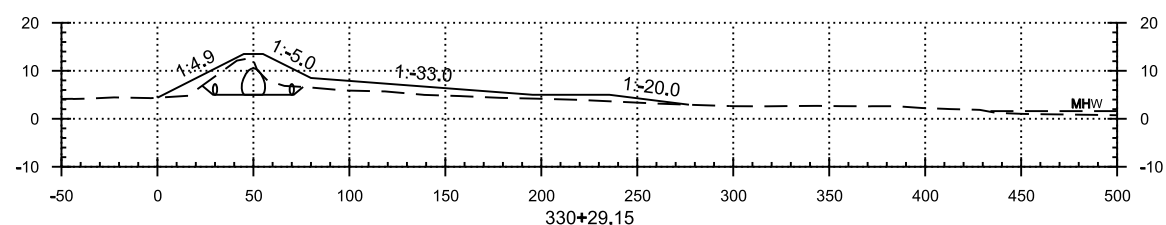
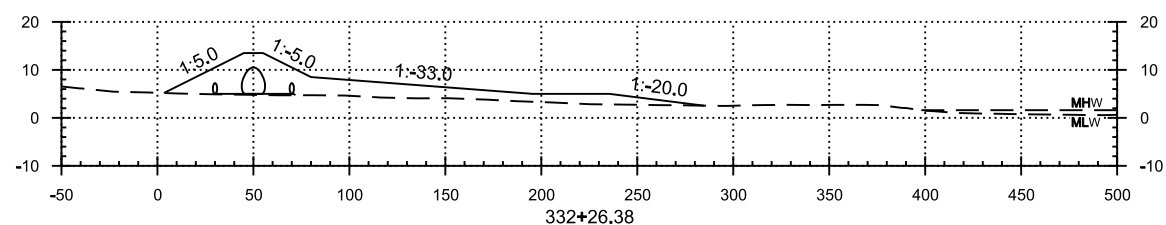
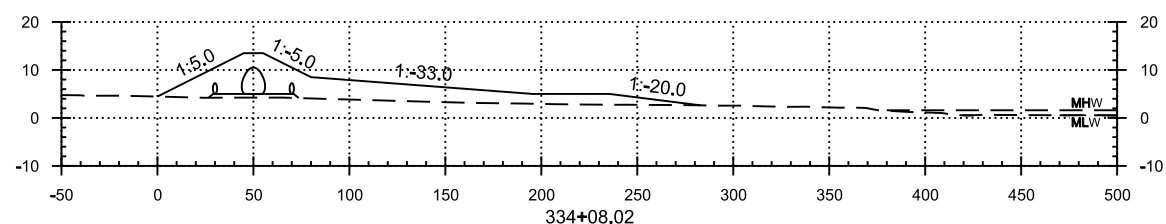
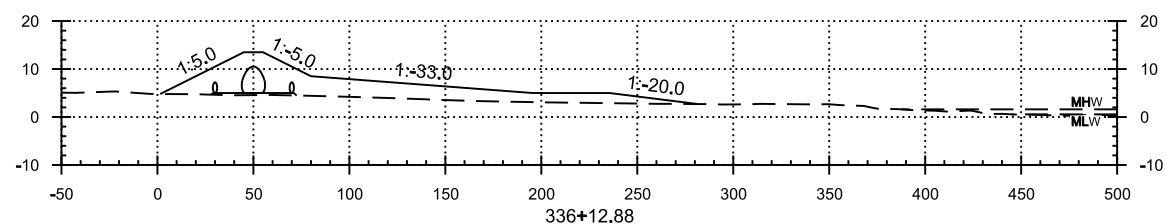
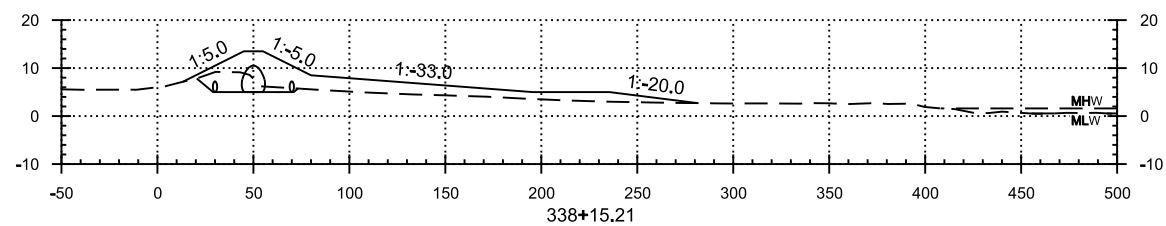
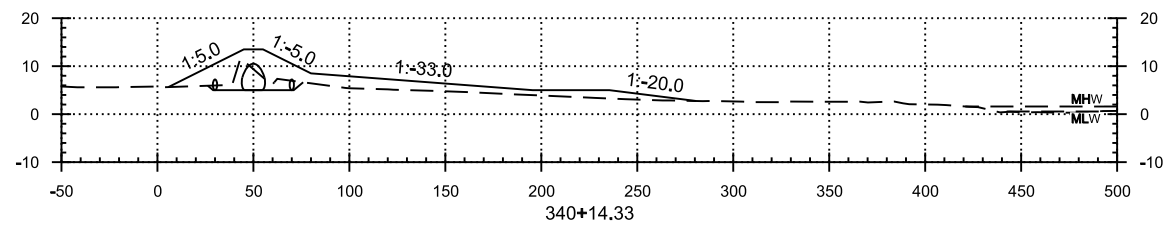
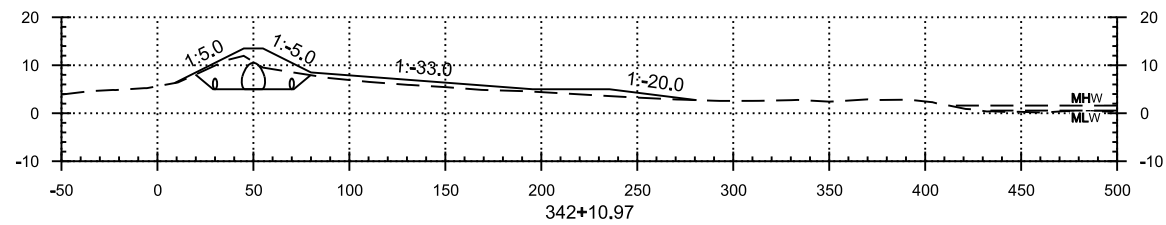
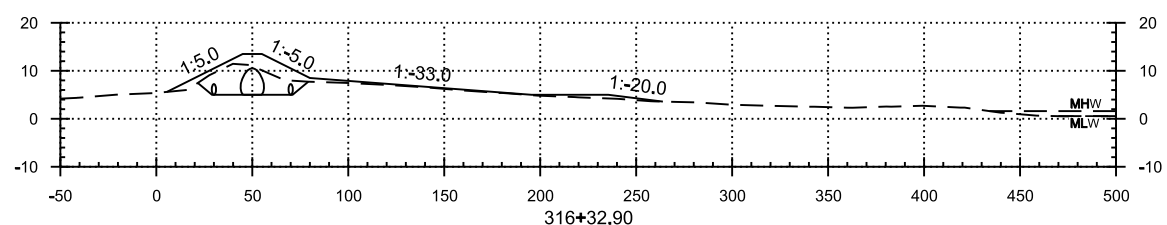
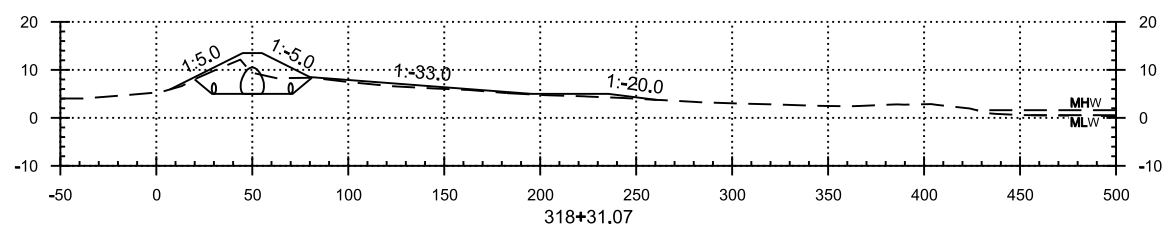
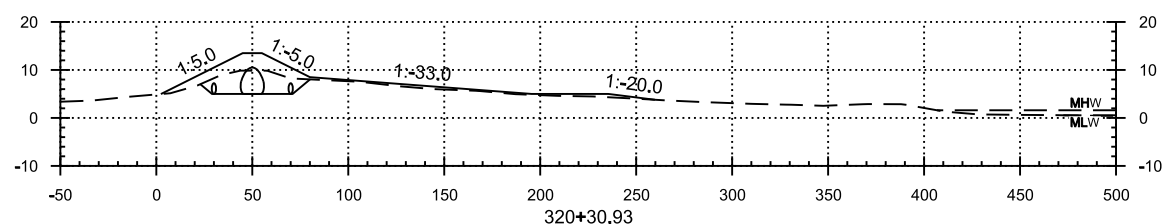
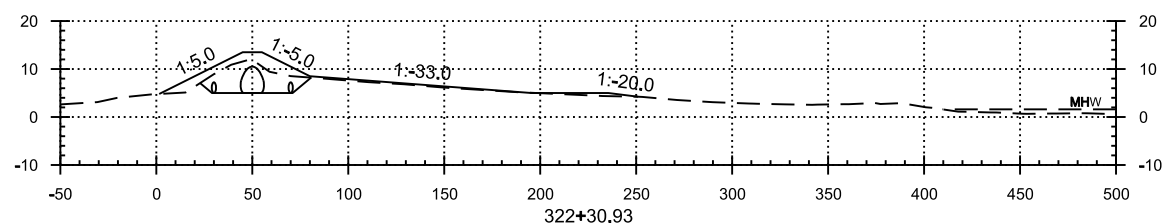
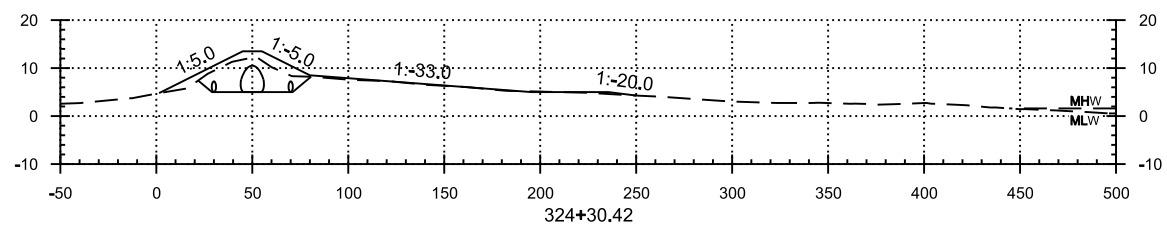
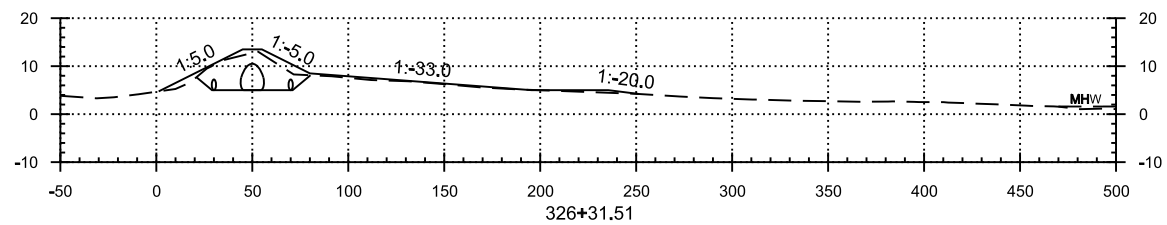
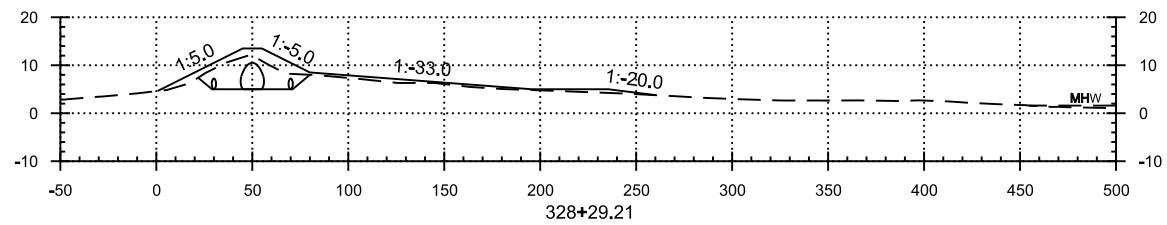
GRAND ISLE AND VICINITY  
REHABILITATION OF HURRICANE  
GUSTAV AND HURRICANE IKE DAMAGE  
JEFFERSON PARISH, LOUISIANA

CROSS SECTIONS

**SHEET  
IDENTIFICATION  
C-312**

**HORIZONTAL SCALE:** 1" = 50'  
**VERTICAL SCALE:** 1" = 20'

**VERTICAL SCALE:** 1" = 20'



**US Army Corps  
of Engineers®  
New Orleans District  
HPO**

[illegible]

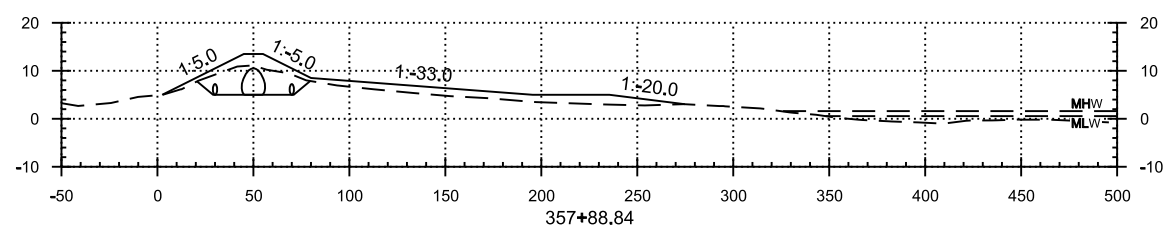
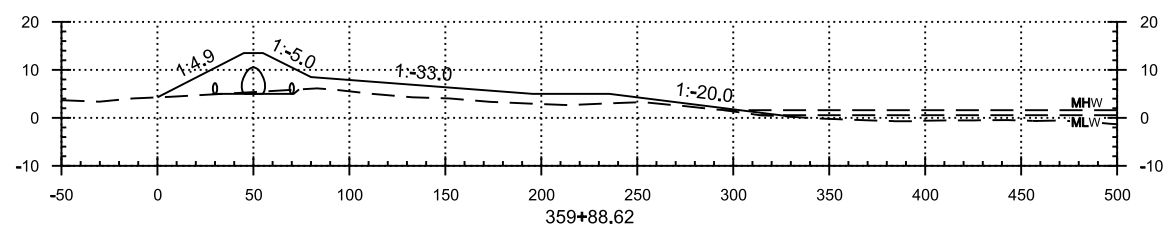
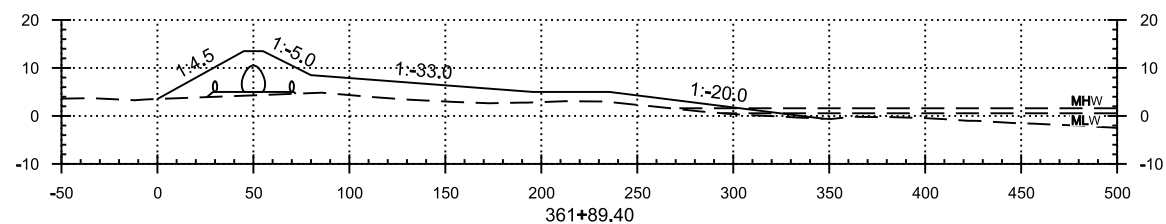
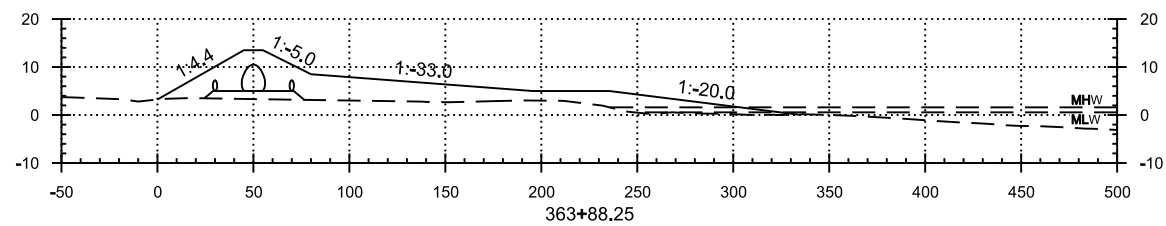
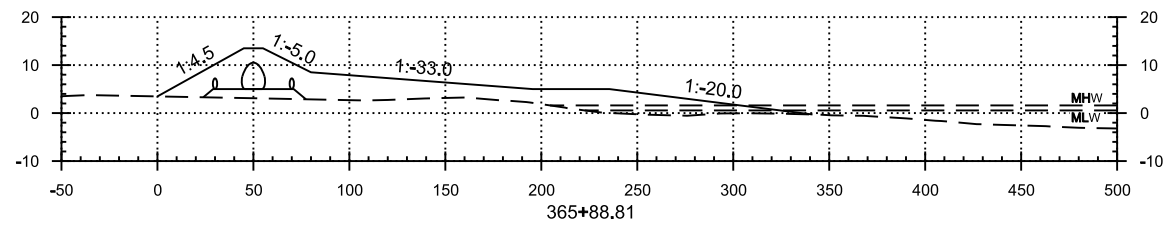
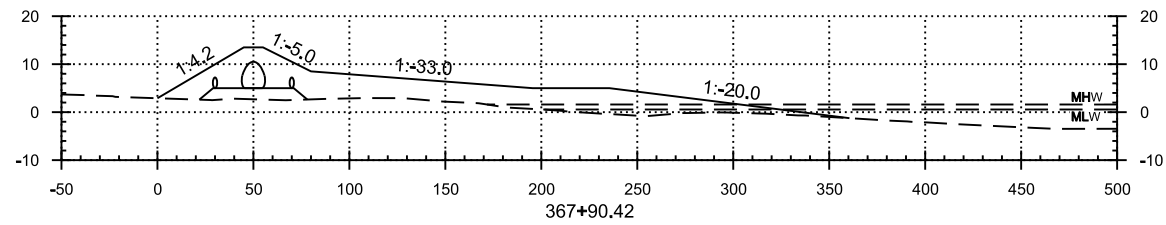
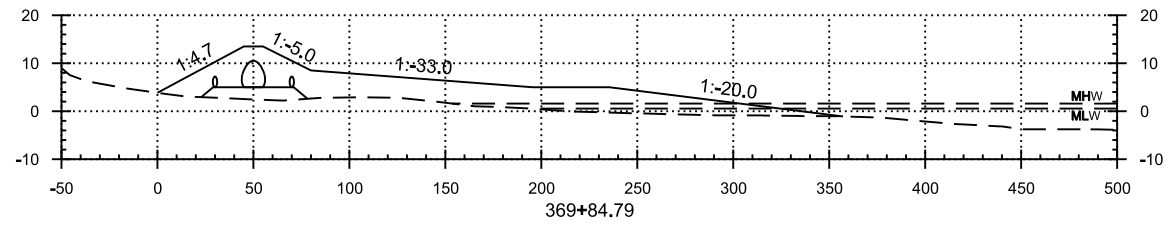
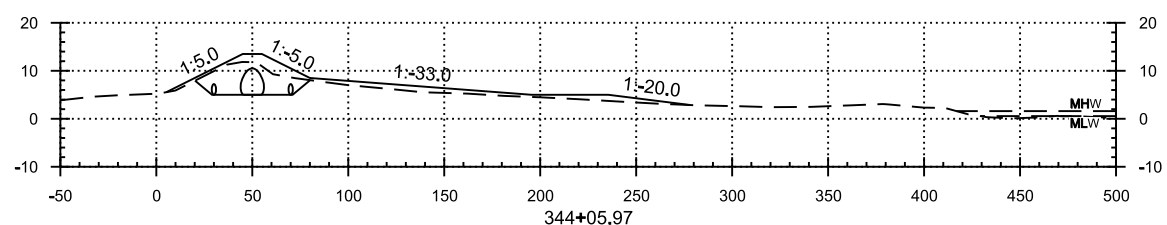
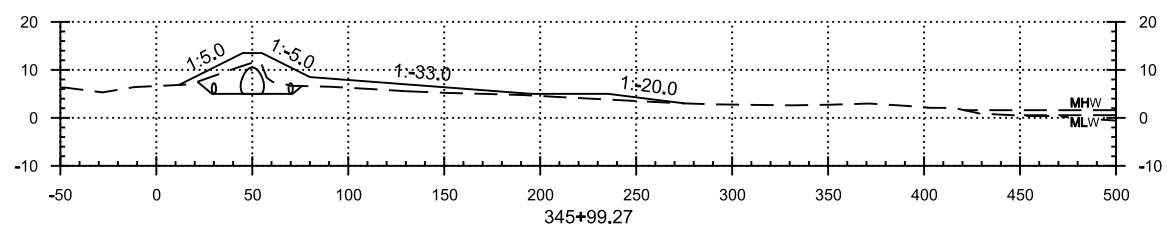
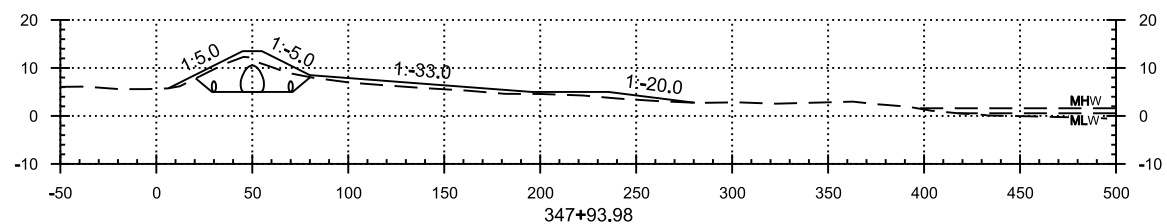
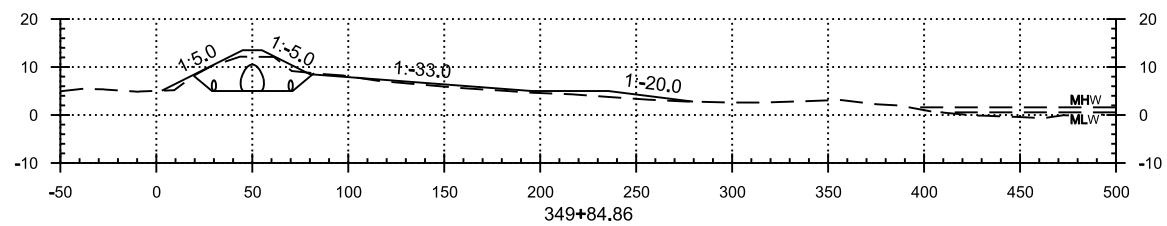
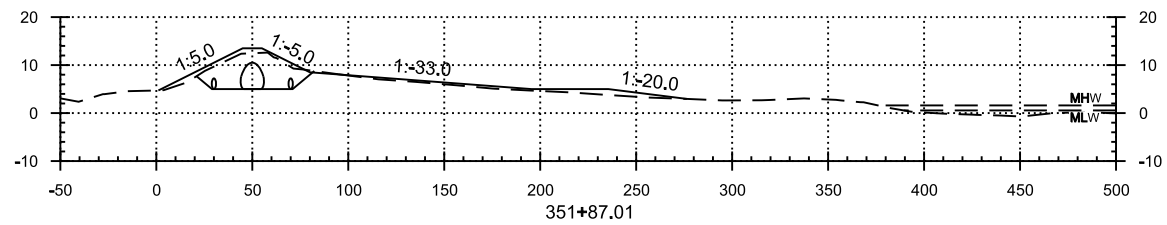
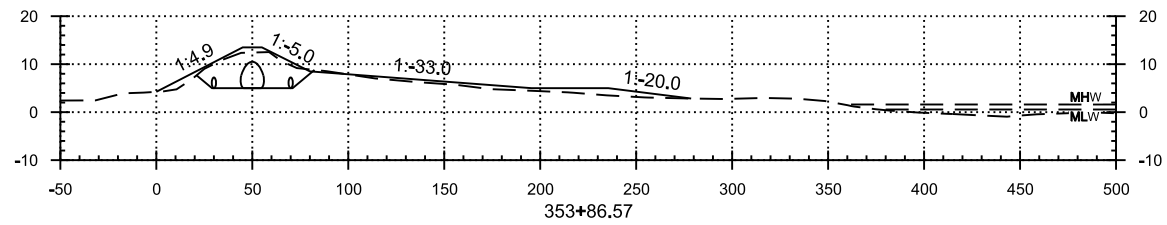
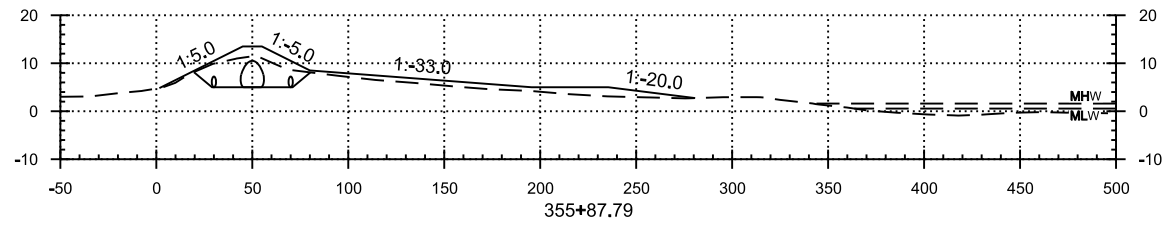
U.S. ARMY CORPS OF ENGINEERS		DESIGNED BY:	DATE:
NEW ORLEANS DISTRICT		J. BAILEY	1/2/2009
NEW ORLEANS, LOUISIANA		DRAWN BY:	SOLICITATION NO.:
HURRICANE PROTECTION OFFICE		M. HARRIS	W72949-05-0058
U.S. ARMY CORPS OF ENGINEERS		CRO BY:	CONTRACT NO.:
SAINT LOUIS DISTRICT		R. WILSON	
SAINT LOUIS, MISSOURI		FILE NAME:	FILE NUMBER:
		1 - 59 MOR	16-484949
		FILE NAME:	FILE NUMBER:
		SIZE:	

GRAND ISLE AND VICINITY  
REHABILITATION OF HURRICANE  
GUSTAV AND HURRICANE IKE DAMAGE  
JEFFERSON PARISH, LOUISIANA

## CROSS SECTIONS

**SHEET  
IDENTIFICATION  
C-313**

**HORIZONTAL SCALE:** 1" = 50'  
**VERTICAL SCALE:** 1" = 20'



**U.S. Army Corps  
Engineers®  
New Orleans District  
PO**

[illegible]

U.S. ARMY CORPS OF ENGINEERS SAINT LOUIS DISTRICT SAINT LOUIS, MISSOURI	HURRICANE PROTECTION OFFICE		DRAWN BY: M. HANGS		CDD BY: J. BRODWIN		SOLUTION/NO.: W012P0405-0005	
	SUBMITTED BY: D. VANVOY		CONTRACT NO.:		FILE NUMBER: H-14-0848		SHEET NO.:	
	SIZE	DATE	SCALE	PLLOT SCALE	PLLOT DATE	CHECKS/SECTION SHEETS/DGN		
	A	11/15/2009	1" = 50' HOR	1" = 50' HOR	11/05/2009			

**REHABILITATION OF HURRICANE  
GUSTAV AND HURRICANE IKE DAMAGE  
JEFFERSON PARISH, LOUISIANA**

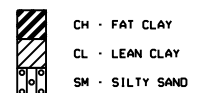
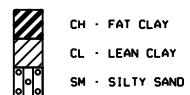
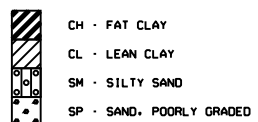
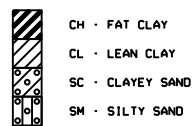
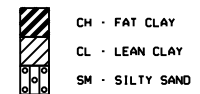
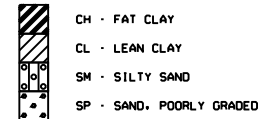
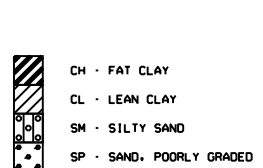
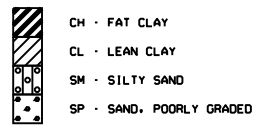
00000700

**SHEET  
IDENTIFICATION  
C-314**

**HORIZONTAL SCALE:** 1" = 50'  
**VERTICAL SCALE:** 1" = 20'





[illegible]

U.S. ARMY CORPS OF ENGINEERS NEW ORLEANS DISTRICT NEW ORLEANS, LOUISIANA NEW ORLEANS PROTECTION OFFICE	DRAWN BY: <b>M. HARKS</b> CHECKED BY: <b>J. BROWN</b> DATE: 10/20/2009 SOLUTION NO.: W012PFA046-DESS CONTRACT NO.: SUBMITTED BY: R. DANKO PLOT DATE: 10/20/2009 FILE NUMBER: H-16-4949 FILE NAME: SOIL BORING LOG.DWG SIZE: 1" = 20' ANSI D
U.S. ARMY CORPS OF ENGINEERS SAINT LOUIS DISTRICT SAINT LOUIS, MISSOURI	

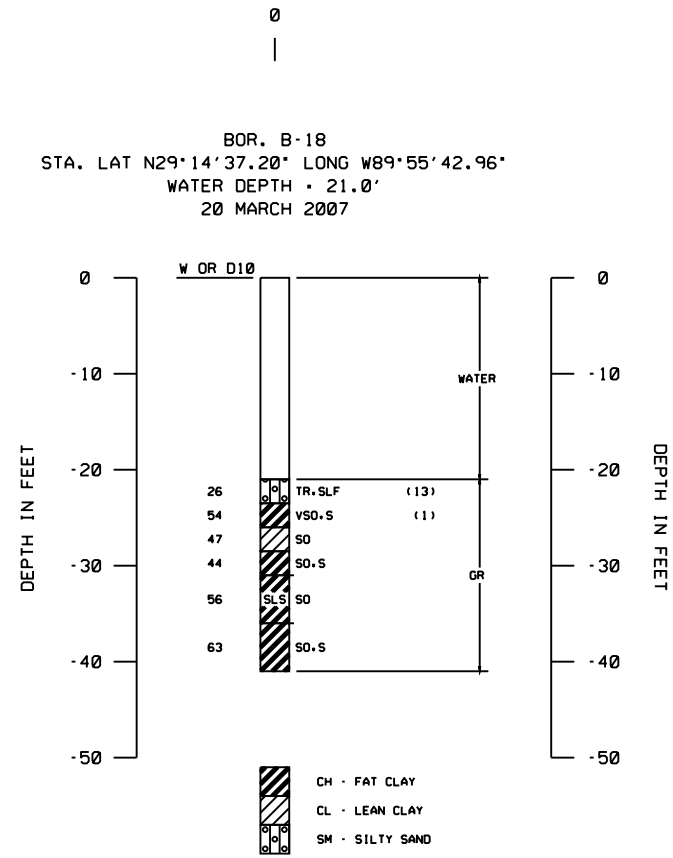
**GRAND ISLE AND VICINITY  
REHABILITATION OF HURRICANE  
GUSTAV AND HURRICANE IKE DAMAGE  
JEFFERSON PARISH, LOUISIANA**

**SOIL BORING LOGS  
WITHIN GULF BORROW AREA**

**SHEET  
IDENTIFICATION  
F-1**



A



## D

C

## B

A

\*\*RESULTS OF THESE TESTS ARE AVAILABLE FOR INSPECTION IN THE U.S. ARMY ENGINEER DISTRICT OFFICE, IF THESE SYMBOLS APPEAR BESIDE THE BORING LOGS ON THE DRAWINGS.

ARE NATURAL WATER CONTENTS IN PERCENT DRY WEIGHT

WHEN UNDERLINED DENOTES  $D_{10}$  SIZE IN MM

FIGURES TO LEFT OF BORING UNDER COLUMNS " LL" AND " PL"

ARE LIQUID AND PLASTIC LIMITS, RESPECTIVELY

SYMBOLS TO LEFT OF BORING
---------------------------

GROUND-WATER SURFACE AND DATE OBSERVED

© DENOTES LOCATION OF CONSOLIDATION TEST

⑤ DENOTES LOCATION OF CONSOLIDATED-DRAINED DIRECT SHEAR TEST

® DENOTES LOCATION OF CONSOLIDATED-UNDRAINED TRIAXIAL COMPRESSION TEST

ⓐ DENOTES LOCATION OF UNCONSOLIDATED-UNDRAINED TRIAXIAL COMPRESSION TEST

Ⓘ DENOTES LOCATION OF SAMPLE SUBJECTED TO CONSOLIDATION TEST AND EACH OF

THE ABOVE THREE TYPES OF SHEAR TEST

FIGURES TO RIGHT OF BORING

ARE VALUES OF COHESION IN LBS /SQ FT FROM UNCONFINED COMPRESSION TESTS

IN PARENTHESIS ARE DRIVING RESISTANCES BLOWS PER FOOT DETERMINED WITH A

STANDARD SPLIT SPOON SAMPLER (1 3/8" I.D., 2" O.D.) AND A 140 LB. DRIVING HAMMER  
WITH A 30" DROP


METERS PER SECOND OF UNDISTURBED SAMPLE

\*\*RESULTS OF THESE TESTS ARE AVAILABLE FOR INSPECTION IN THE U.S. ARMY ENGINEER DISTRICT OFFICE, IF THESE SYMBOLS APPEAR BESIDE THE BORING LOGS ON THE DRAWINGS.

11. WHILE THE BORINGS ARE REPRESENTATIVE OF SUBSURFACE CONDITIONS AT THEIR RESPECTIVE LOCATIONS AND FOR THEIR RESPECTIVE VERTICAL REACHES, LOCAL VARIATIONS CHARACTERISTIC OF THE SUBSURFACE MATERIALS OF THE REGION ARE ANTICIPATED AND, IF ENCOUNTERED, SUCH VARIATIONS WILL NOT BE CONSIDERED AS DIFFERING MATERIALLY WITHIN THE PURVIEW OF THE CONTRACT CLAUSE ENTITLED "DIFFERING SITE CONDITIONS".

2. GROUND-WATER ELEVATIONS SHOWN ON THE BORING LOGS REPRESENT GROUND-WATER SURFACES ENCOUNTERED IN SUCH BORINGS ON THE DATES SHOWN. ABSENCE OF WATER SURFACE DATA ON CERTAIN BORINGS INDICATES THAT NO GROUND-WATER DATA ARE AVAILABLE FROM THE BORING BUT DOES NOT NECESSARILY MEAN THAT GROUND-WATER WILL NOT BE ENCOUNTERED AT THE LOCATIONS OR WITHIN THE VERTICAL REACHES OF SUCH BORINGS.

3. CONSISTENCY OF COHESIVE SOILS SHOWN ON THE BORING LOGS IS BASED ON DRILLER'S LOG AND VISUAL EXAMINATION AND IS APPROXIMATE, EXCEPT WITHIN THOSE VERTICAL REACHES OF THE BORINGS WHERE SHEAR STRENGTHS FROM UNCONFINED COMPRESSION TESTS ARE SHOWN.

4. UNLESS OTHERWISE NOTED:

- A. UNDISTURBED BORINGS, INDICATED BY THE LETTER 'U', ARE TAKEN WITH A 5'' I.D. PISTON TYPE SAMPLER.

- B. GENERAL TYPE BORINGS ARE TAKEN WITH A 1 7/8" I.D. TUBE SAMPLER AND/OR A 1 3/8" I.D. SPLIT SPOON SAMPLER.

[illegible]

U.S. ARMY CORPS OF ENGINEERS NEW ORLEANS DISTRICT NEW ORLEANS, LOUISIANA HURRICANE PROTECTION OFFICE	DESIGNED BY: J. LEAHY	DATE 02/27/2009
U.S. ARMY CORPS OF ENGINEERS SAINT LOUIS DISTRICT SAINT LOUIS, MISSOURI	OWNED BY: M. HANES CND BY: J. BROWN SUBMITTED BY: R. DAWKINS	CALCULATION NO. W912PFA-09B-0035 CONTRACT NO. FILE NUMBER H-1648949 PLOT DATE PLOT SCALE NTS FILE NAME SIZE ANGLE BORING LOG SHEET/LONG

**GRAND ISLE AND VICINITY  
REHABILITATION OF HURRICANE  
GUSTAV AND HURRICANE IKE DAMAGE  
JEFFERSON PARISH, LOUISIANA**

## SOIL BORING LEGEND

**SHEET  
IDENTIFICATION  
F-4**

D

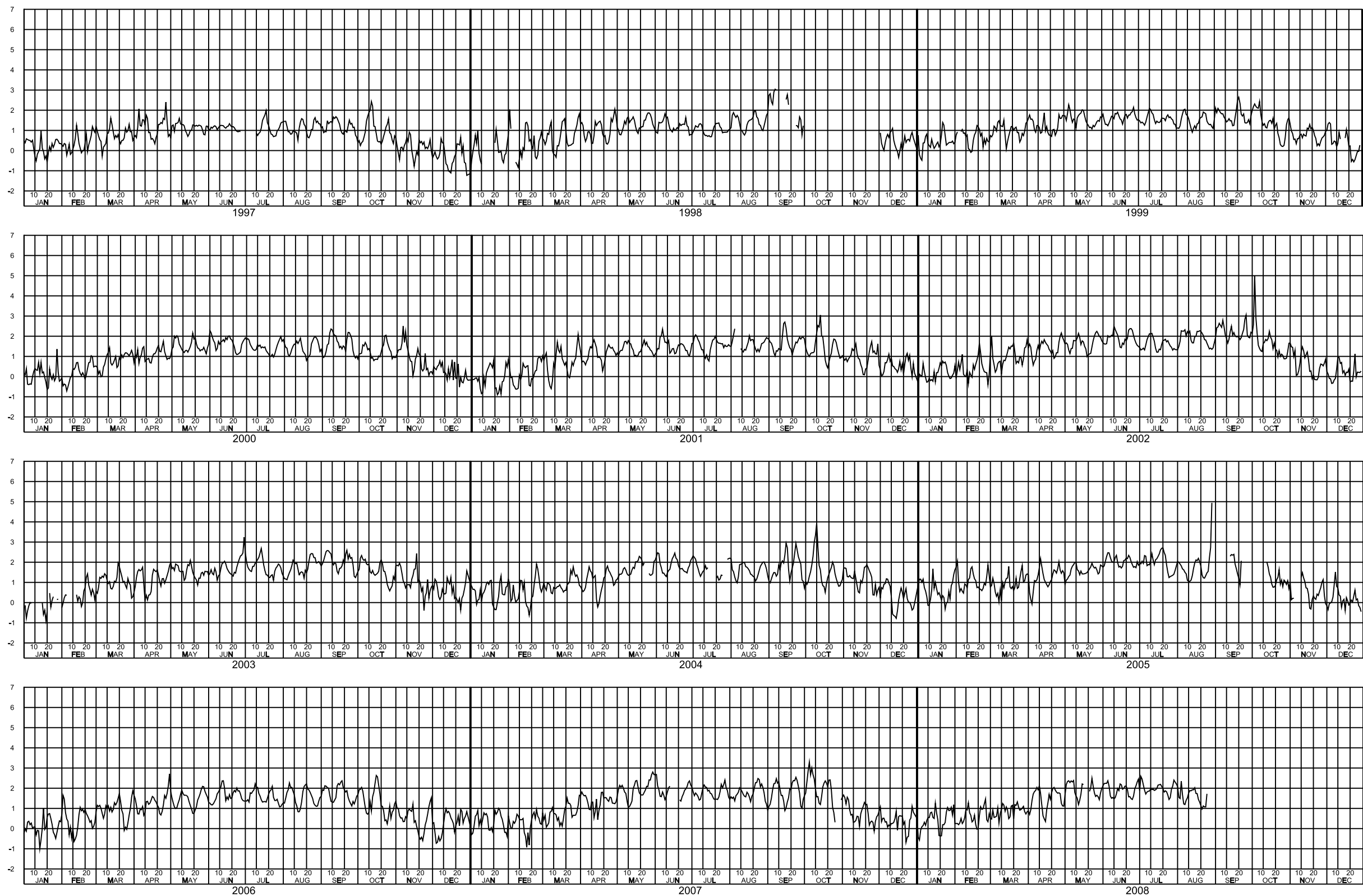
C

B

A

## GAGE READINGS IN FT NAVD88

## GAGE READINGS IN FT NAVD88



**U.S.G.S. GAGE INFORMATION:**

BARATARIA PASS  
EAST OF GRAND ISLE  
STATION NO. 073802515  
N 284742.79  
E 3724617.39

U.S. ARMY CORPS OF ENGINEERS		DESIGNED BY:		DATE
NEW ORLEANS DISTRICT		SCALE	DATE BY	1/10/2009
NEW ORLEANS, LOUISIANA		MARKS	BY	W012474-04-003
HURRICANE PROTECTION OFFICE		SCALE	BY	1/10/2009
U.S. ARMY CORPS OF ENGINEERS		SCALE	BY	1/10/2009
SAINT LOUIS DISTRICT		SCALE	BY	1/10/2009
SAINT LOUIS, MISSOURI		SCALE	BY	1/10/2009

GRAND ISLE AND VICINITY  
REHABILITATION OF HURRICANE  
GUSTAV AND HURRICANE IKE DAMAGE  
JEFFERSON PARISH, LOUISIANA

STAGE HYDROGRAPH

**SHEET  
IDENTIFICATION  
H-1**