



Levee System Summary

*Mississippi River East Bank
Iberville, East Baton Rouge, Ascension, St. James,
St. John the Baptist, and St. Charles Parishes, Louisiana*

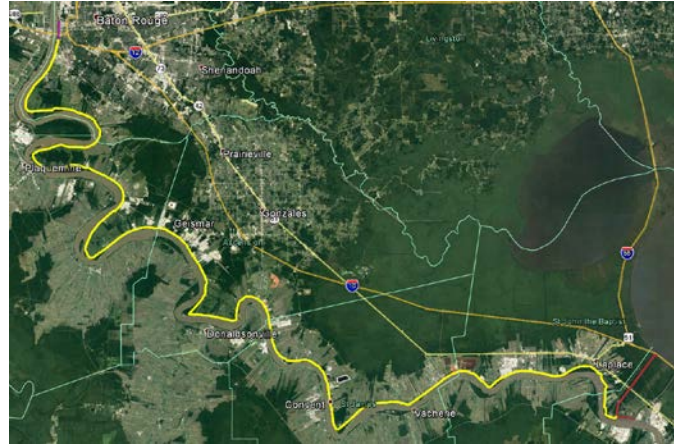
U.S. ARMY CORPS OF ENGINEERS

BUILDING STRONG®

July 2018

Project Description: *The Mississippi River East Bank system is a federally authorized flood risk reduction system which spans along the east bank of the Mississippi River, beginning in Baton Rouge and continuing downriver to the Bonnet Carre Spillway near Montz, Louisiana. The approximately 106 mile earthen levee has an average height of 25 ft. Each levee segment is operated and maintained by a non-federal project sponsor in partnership with the New Orleans District, U.S. Army Corps of Engineers. Construction projects in the system span from initial federal construction in 1928 to present day.*

The system provides flood risk reduction to the communities of Baton Rouge, Gonzales, Laplace, and others located on the east bank of the river in the parishes of Iberville, East Baton Rouge, Ascension, Livingston, St. James, St. John the Baptist, and St. Charles. The leveed area has an estimated population of 430,000 and total assets valued at \$62.8 billion.



Risk Characterization: *The Mississippi River East Bank System is classified as a Moderate to High risk due to the high consequences associated with the system in combination with the likelihood of overtopping or breach. Risks are driven by the fact that, if overtopped or breached, both commercial and residential areas from Baton Rouge to Laplace, LA would be inundated to a depth of up to 3 feet. Bank stability was determined to be a moderate risk driver. Surveys identified locations where unstable bank could result in a bank failure and could potentially affect the stability of the levee at a low river stage. The levee has been tested multiple times, including loading near the top in 2011. Areas of concern in regard to seepage during 2011 were remediated in 2012 with installation of a seepage berm. The levee is noted in good condition with no other identified issues and is expected to perform well under future loads.*

**What is driving the risk?
(Listed in order of priority)**

**What is being/ should be being done about it?
(Risk Management)**

<p><i>Consequences: With a population of 430,000 people and total assets valued at \$62.8 billion, the high potential consequences in the event of a failure is a major risk driver for this system.</i></p>	<p><i>The Louisiana Governor’s Office for Homeland Security and Emergency Preparedness (GOHSEP) has a comprehensive evacuation plan, the unified shelter plan, which oversees all parishes in the state.</i></p>
<p><i>Bank/Levee Stability: Regular monitoring of the Mississippi River bank has identified locations of unstable bank where a bank failure could weaken the stability of the levee.</i></p>	<p><i>USACE monitors the banks annually and locations with known instabilities are scheduled for repair based upon funding.</i></p>
<p><i>Low areas which were sandbagged in 2011 High Water.</i></p>	<p><i>The USACE St. Gabriel project currently underway is raising the levee south of Baton Rouge, and Design is underway to raise the Baton Rouge Front Levee Phase IV.</i></p>

What Is Important to Know? Residents within the leveed area should have a working knowledge of flood warning and evacuation procedures. Residents should be aware of evacuation routes to exit the levee system. Major highways exiting the system include I-10, I-12, I-55, Hwy 3213 across the Veterans Memorial Bridge, and Hwy 70 across the Sunshine Bridge. Residents should stay well informed through television, radio, and text messaging during periods of high water.

PREPARE

- Prepare an emergency kit that includes: flashlights, radio, batteries, candles, matches, first-aid kit and a list and supply of all medications, blankets, water, food, etc.
- Keep important documents and valuable possessions on an upper level of the structure or as high as possible.
- Make a list of items to take with you and have a plan for your pets. Establish a family meeting place.
- Know how to safely shut off your utilities.
- Listen for emergency instructions from authorities.
- Prepare and practice your evacuation plan with your family.

PREVENT

- Keep storm drains, gutters and ditches clear.
- Check with the Parish flood control district to see if a permit is required if you plan to build on, fill, alter or re-grade your property.
- Never excavate, modify, landscape, or build anything on any levee or flood control easement without permits from the appropriate Parish, state, and federal agencies.

PROTECT

- Never drive through flooded streets or roads: more people are trapped and die in their vehicles than anywhere else during floods.
- Never try to escape rising floodwater by going into the attic unless you have roof access or no other safe options.
- Consider buying flood insurance.

Latest Inspection and Rating:	<i>The most recent Routine Inspections for this system were performed in October of 2016. This inspection was conducted by a team comprised of members from USACE, Coastal Protection and Restoration Authority, and the levee sponsor. Inspections were performed for the levee system, which received a Minimally Acceptable rating. A rating of Minimally Acceptable signifies that one or more items were noted during the inspection that requires maintenance, however these items will not prevent the system from performing as intended during the next flood event.</i>
Rehabilitation Program Eligibility Status:	<i>The Mississippi River East Bank system is part of the Mississippi River and Tributaries (MR&T) project, federally authorized by the Flood Control Act 15 May 1928. Levee projects under the MR&T authorization are not included in the Rehabilitation Program. USACE has authority to perform major maintenance and major flood repairs for MR&T levee segments.</i>
National Flood Insurance Program Status:	<p><i>This levee system was accredited by FEMA using USACE letter dated 3/28/2006 certifying Mississippi River Levees. On 1/26/2018, USACE mentioned that there is an updated 2012 LSER for this levee system they are going to provide so FEMA can perform a completeness check with 44CFR65.10 requirements to complete accreditation process. FEMA is aware of the ongoing collaborative efforts by local governments and technical support by the Corps. This information is current as of July 20, 2018.</i></p> <p><i>Access NFIP flood hazard mapping products, including Flood Insurance Rate Maps, at the FEMA Flood Map Service Center website: https://msc.fema.gov/</i></p>

Ongoing Activities and Studies: A levee enlargement project is currently under construction in Pontchartrain Levee District at St. Gabriel. Engineering design is currently underway for the Baton Rouge Front Phase IV project.

