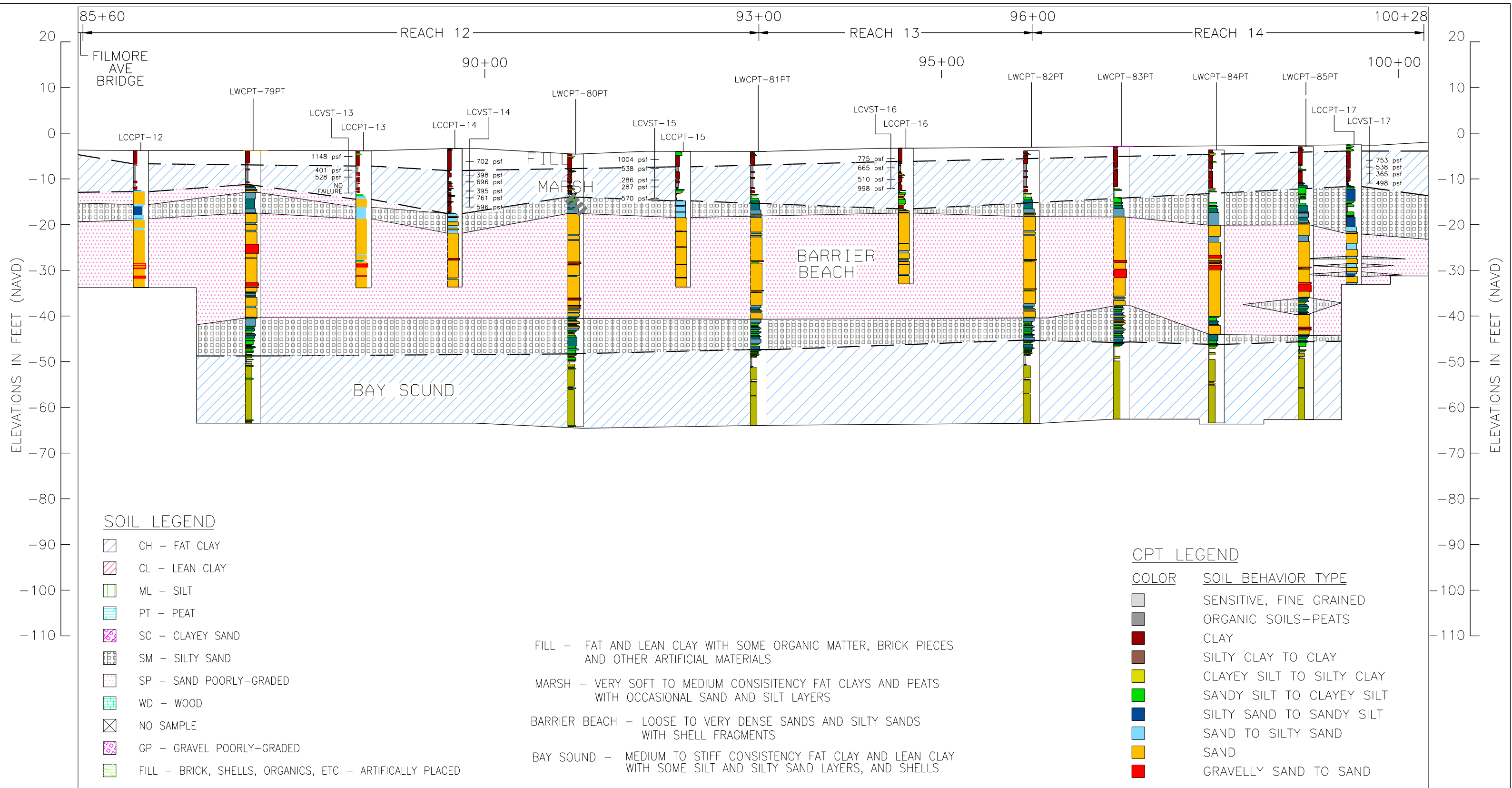


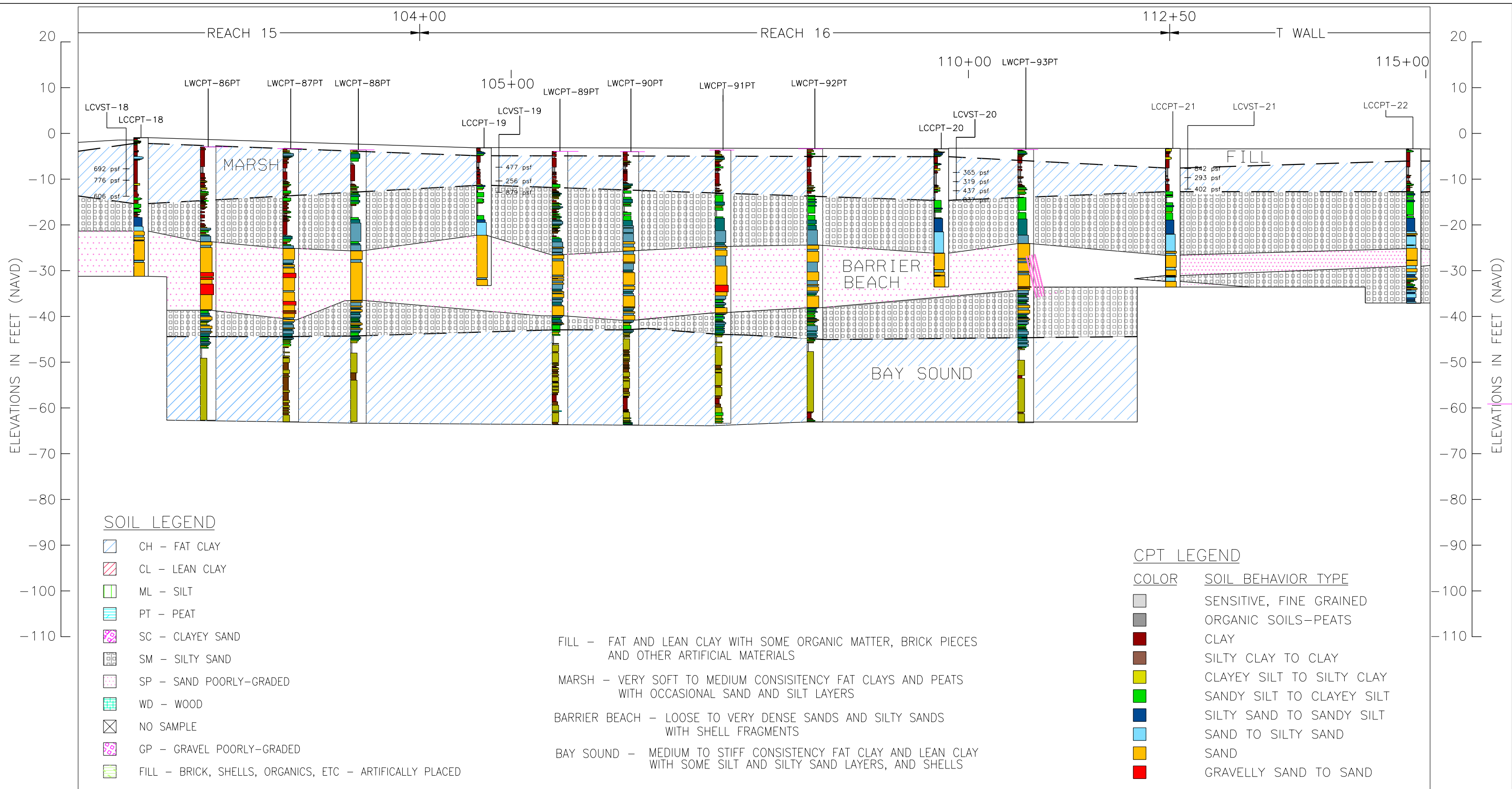
HORIZONTAL SCALE IN FEET





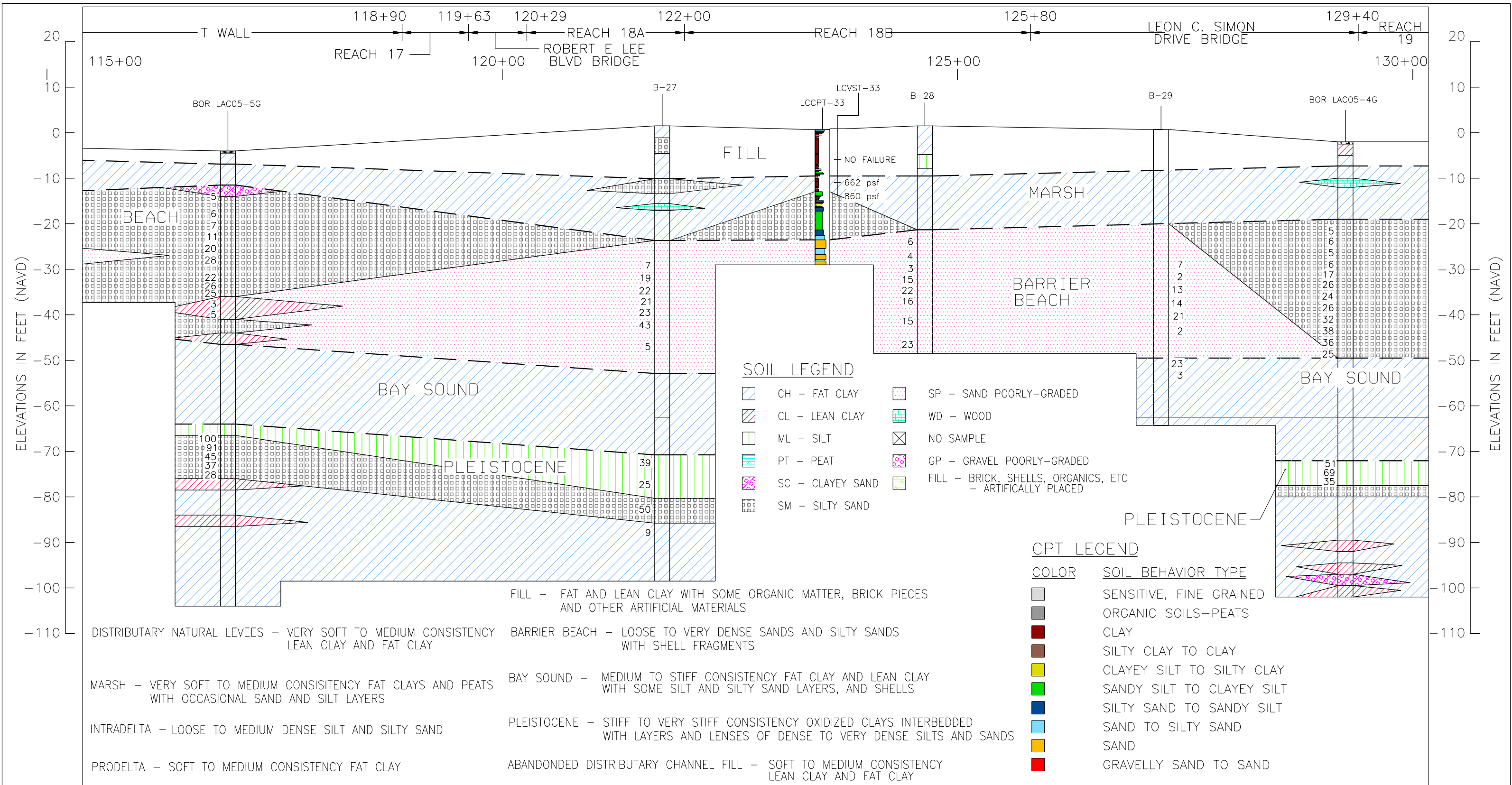
HORIZONTAL SCALE IN FEET





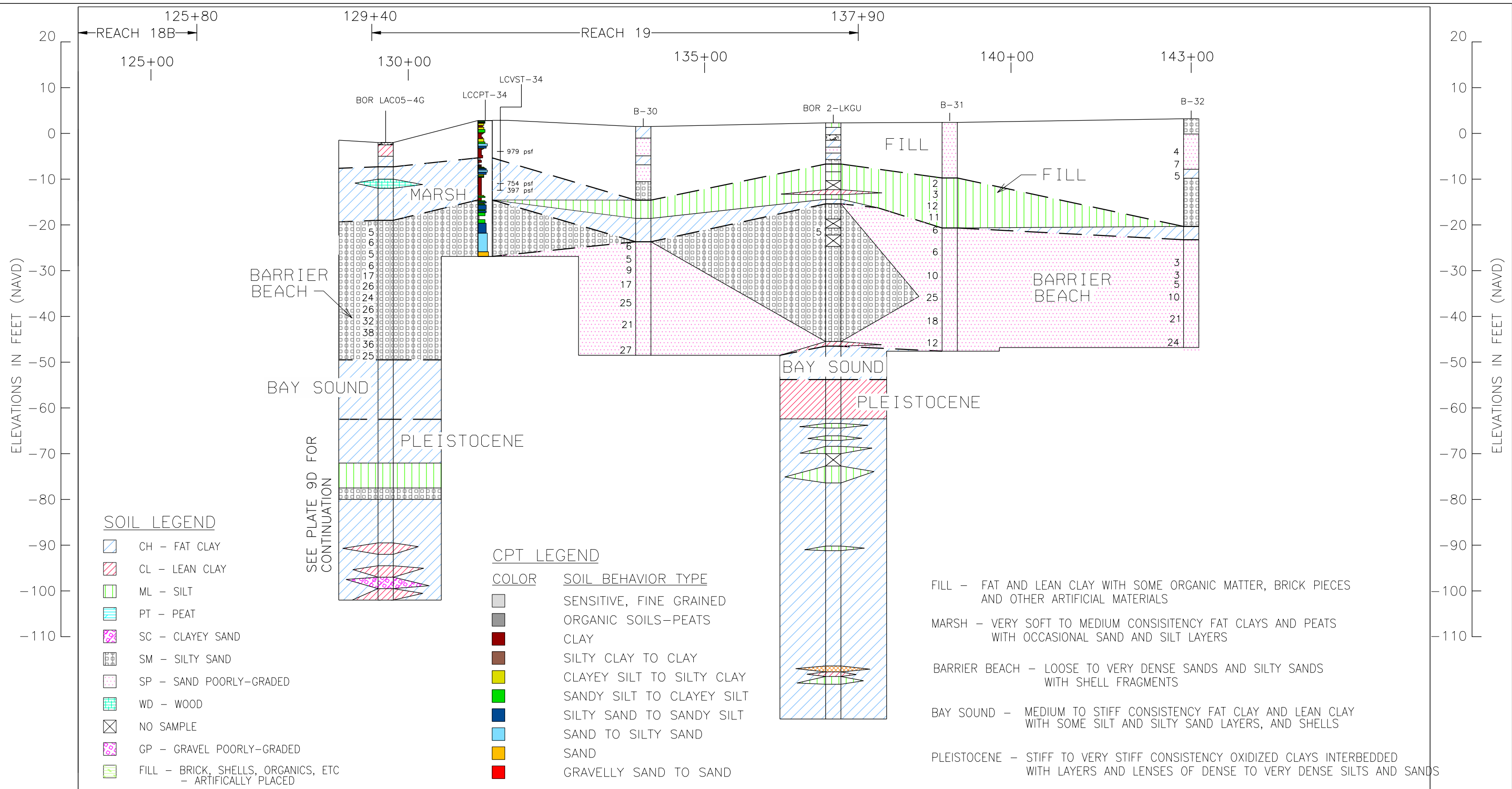
HORIZONTAL SCALE IN FEET





HORIZONTAL SCALE IN FEET





NOTES:

- VST RESULTS INDICATE S_u IN psf.
- FILL WAS IDENTIFIED BASED ON;
 - FOR BORINGS, PREVIOUS PROFILES, AND/OR STIFF SOILS WITHOUT WOOD.
 - FOR CPTS, RELATIVELY STIFF SOIL ZONES.
- +50 SPT TESTS REACHED 50 IN LESS THAN 12 INCHES.

HORIZONTAL SCALE IN FEET



LAKE PONTCHARTRAIN AND VICINITY
LONDON AVENUE OUTFALL CANAL
WESTBANK TOE

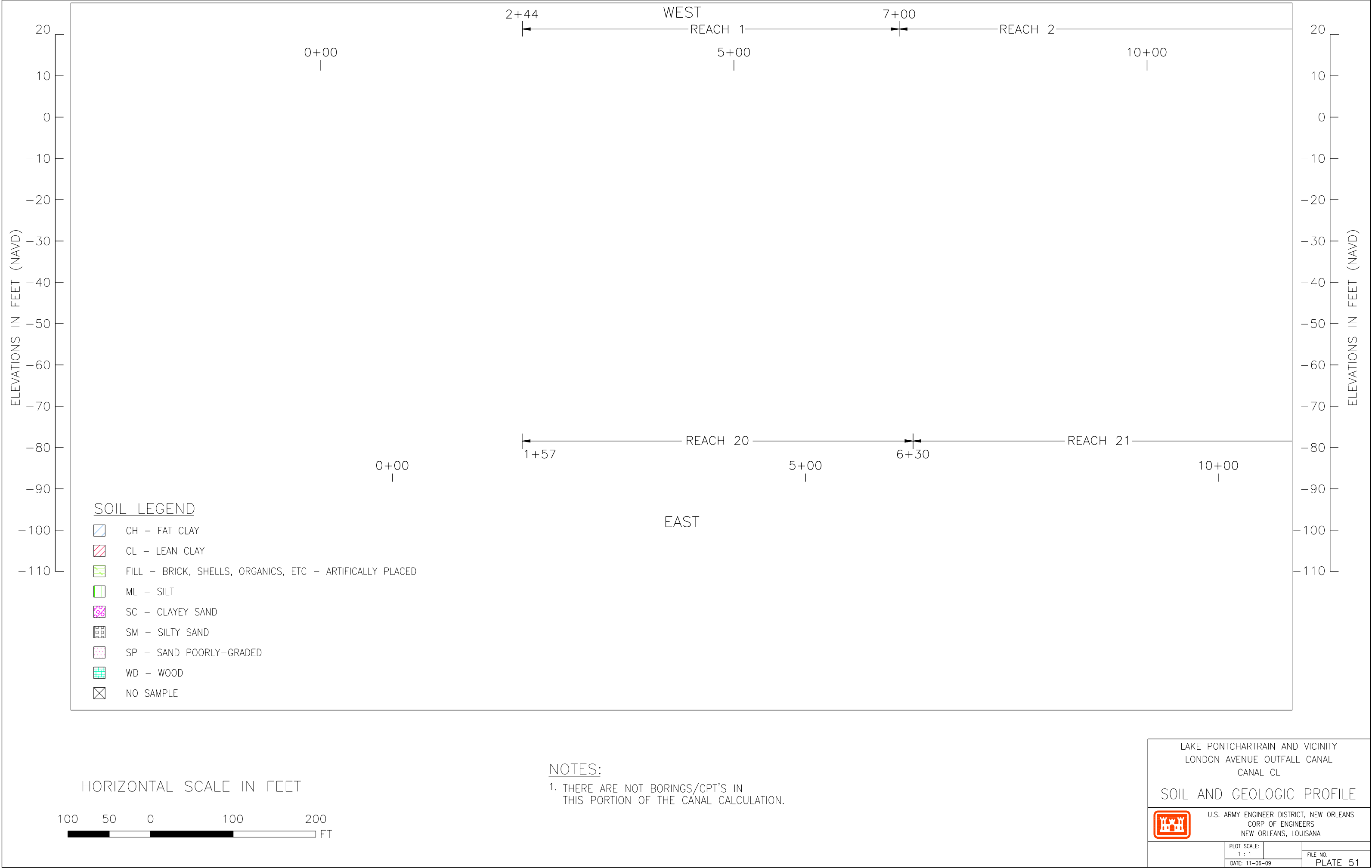
SOIL AND GEOLOGIC PROFILE

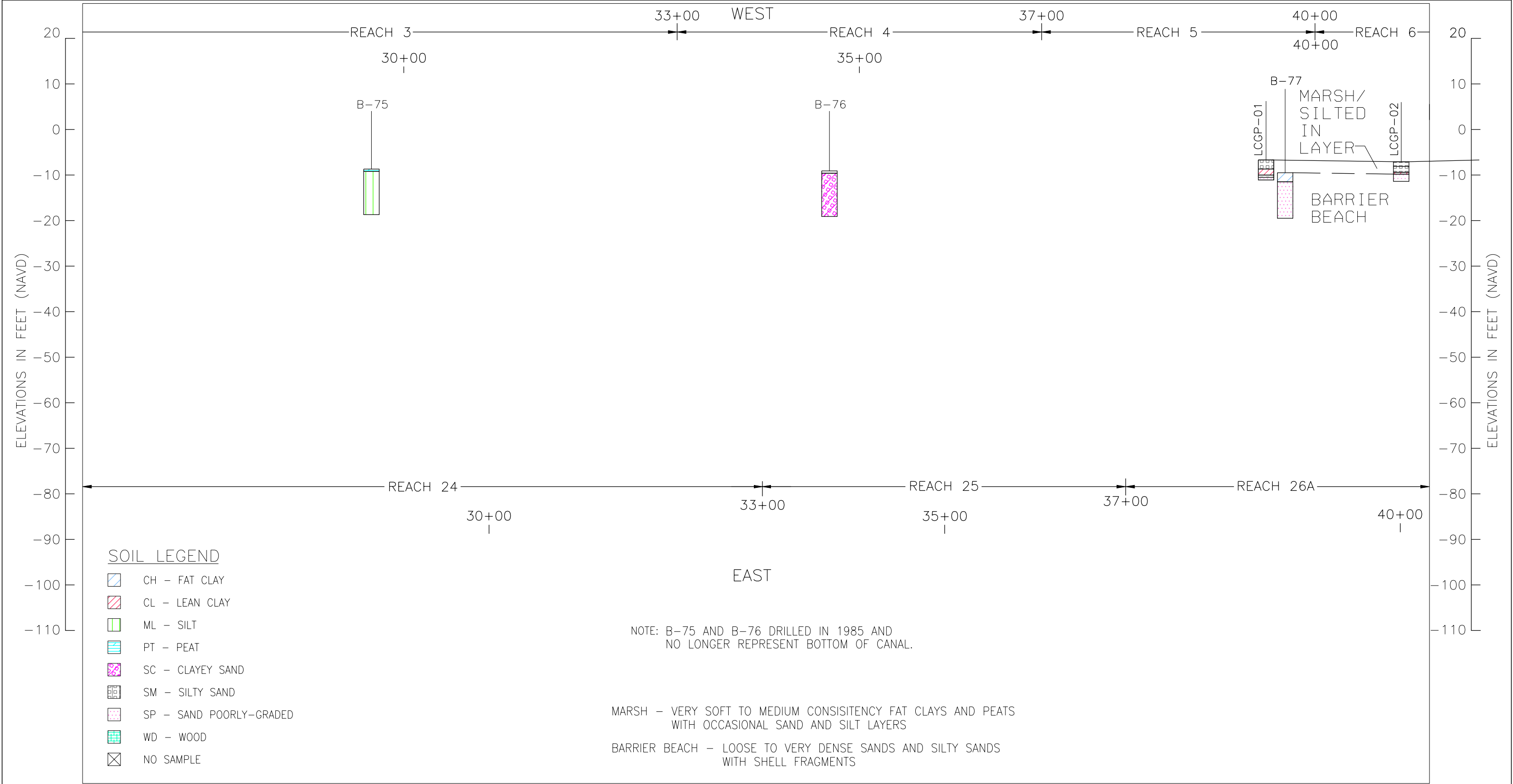


U.S. ARMY ENGINEER DISTRICT, NEW ORLEANS
CORP OF ENGINEERS
NEW ORLEANS, LOUISIANA

PLOT SCALE:
1 : 1
DATE: 11-06-09

FILE NO.
PLATE 50





NOTE: B-75 AND B-76 DRILLED IN 1985 AND
NO LONGER REPRESENT BOTTOM OF CANAL.

MARSH - VERY SOFT TO MEDIUM CONSISTENCY FAT CLAYS AND PEATS
WITH OCCASIONAL SAND AND SILT LAYERS


BARRIER BEACH - LOOSE TO VERY DENSE SANDS AND SILTY SANDS
WITH SHELL FRAGMENTS

NOTES:

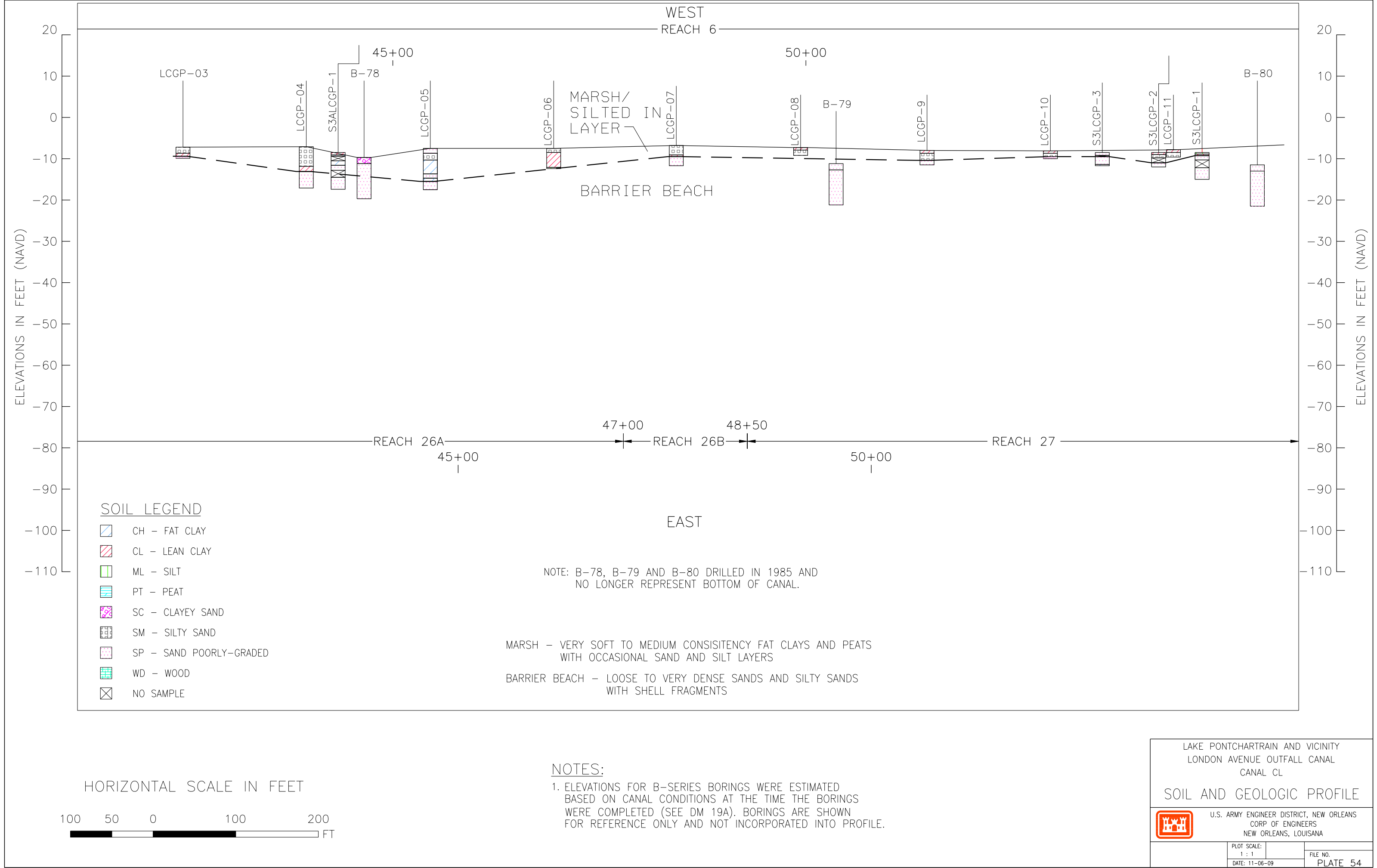
1. ELEVATIONS FOR B-SERIES BORINGS WERE ESTIMATED
BASED ON CANAL CONDITIONS AT THE TIME THE BORINGS
WERE COMPLETED (SEE DM 19A). BORINGS ARE SHOWN
FOR REFERENCE ONLY AND NOT INCORPORATED INTO PROFILE.

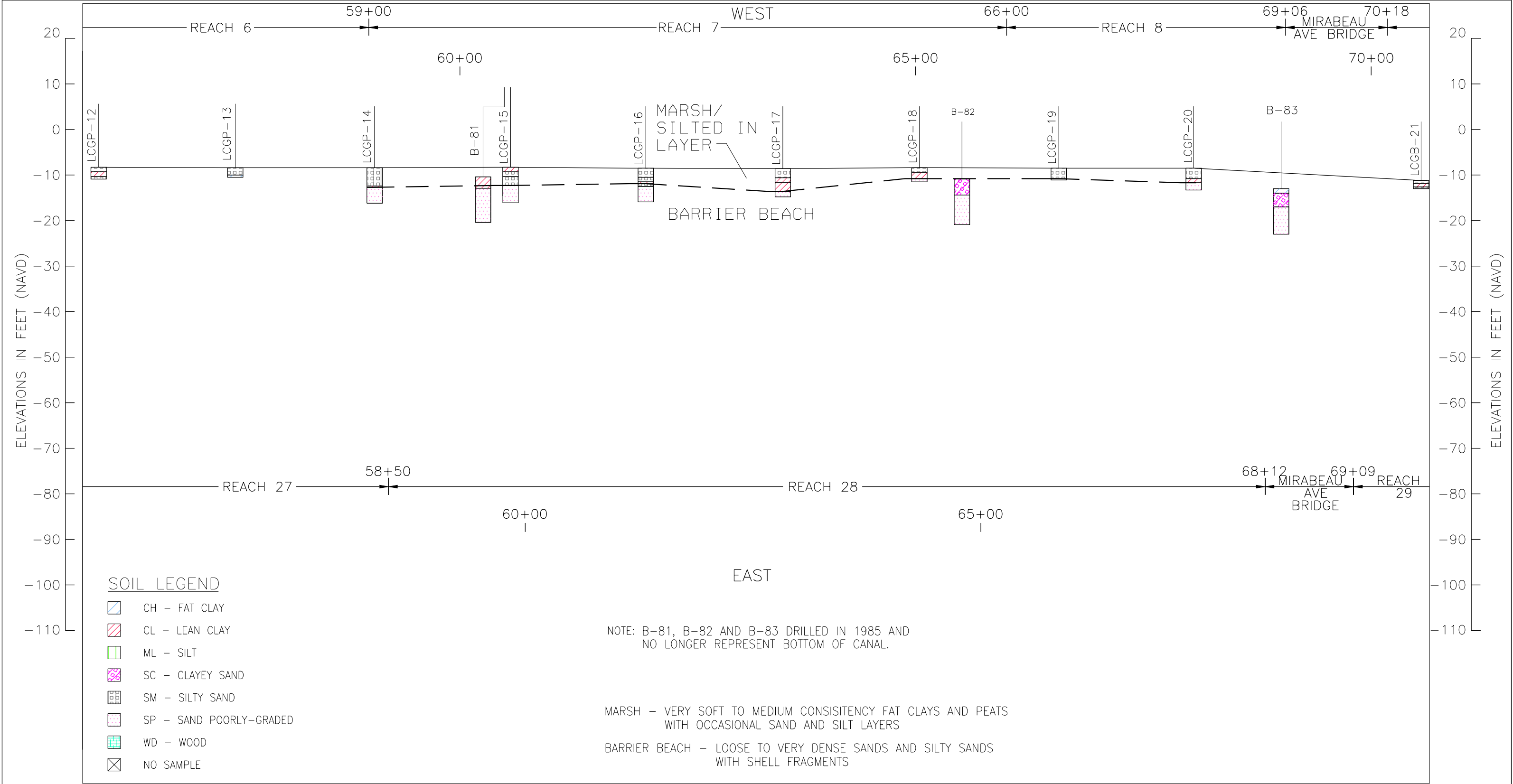
LAKE PONTCHARTRAIN AND VICINITY
LONDON AVENUE OUTFALL CANAL
CANAL CL

SOIL AND GEOLOGIC PROFILE

 U.S. ARMY ENGINEER DISTRICT, NEW ORLEANS
CORP OF ENGINEERS
NEW ORLEANS, LOUISIANA

PLOT SCALE: 1 : 1	FILE NO. PLATE 53
DATE: 11-06-09	






NOTES:

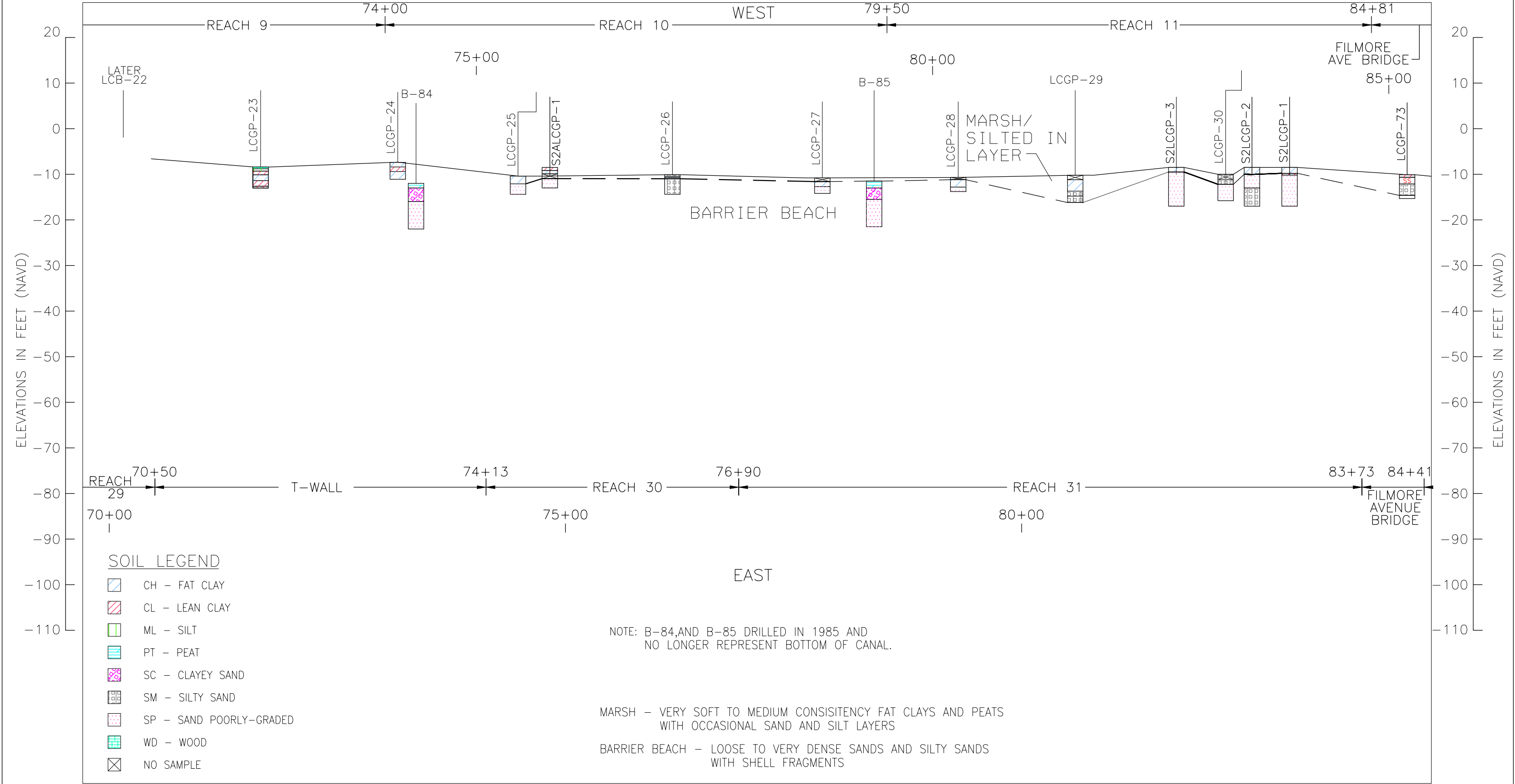
1. ELEVATIONS FOR B-SERIES BORINGS WERE ESTIMATED BASED ON CANAL CONDITIONS AT THE TIME THE BORINGS WERE COMPLETED (SEE DM 19A). BORINGS ARE SHOWN FOR REFERENCE ONLY AND NOT INCORPORATED INTO PROFILE.

LAKE PONTCHARTRAIN AND VICINITY
LONDON AVENUE OUTFALL CANAL
CANAL CL

SOIL AND GEOLOGIC PROFILE

U.S. ARMY ENGINEER DISTRICT, NEW ORLEANS
CORP OF ENGINEERS
NEW ORLEANS, LOUISIANA

PLOT SCALE: 1 : 1	FILE NO. PLATE 55
DATE: 11-06-09	

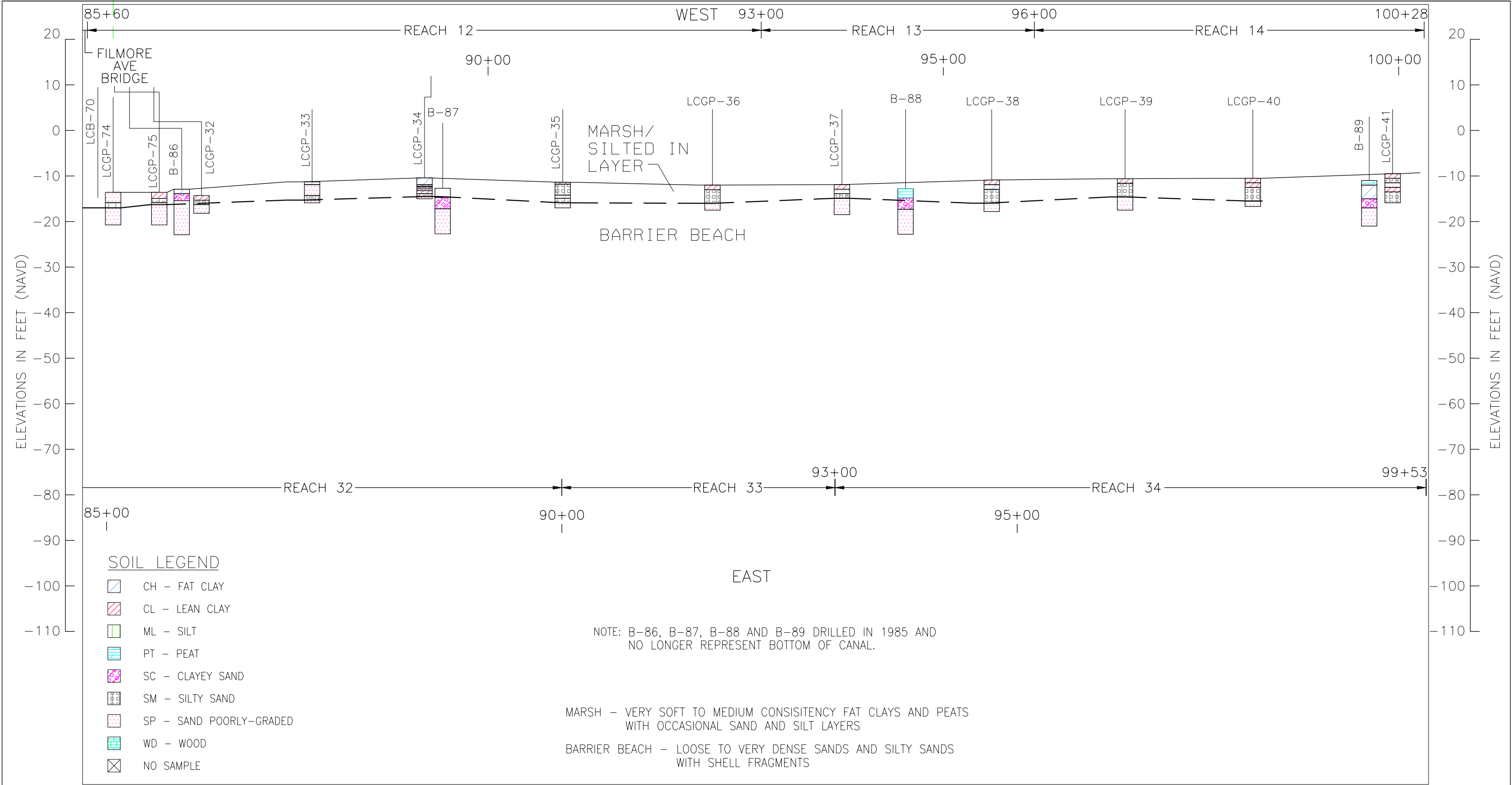


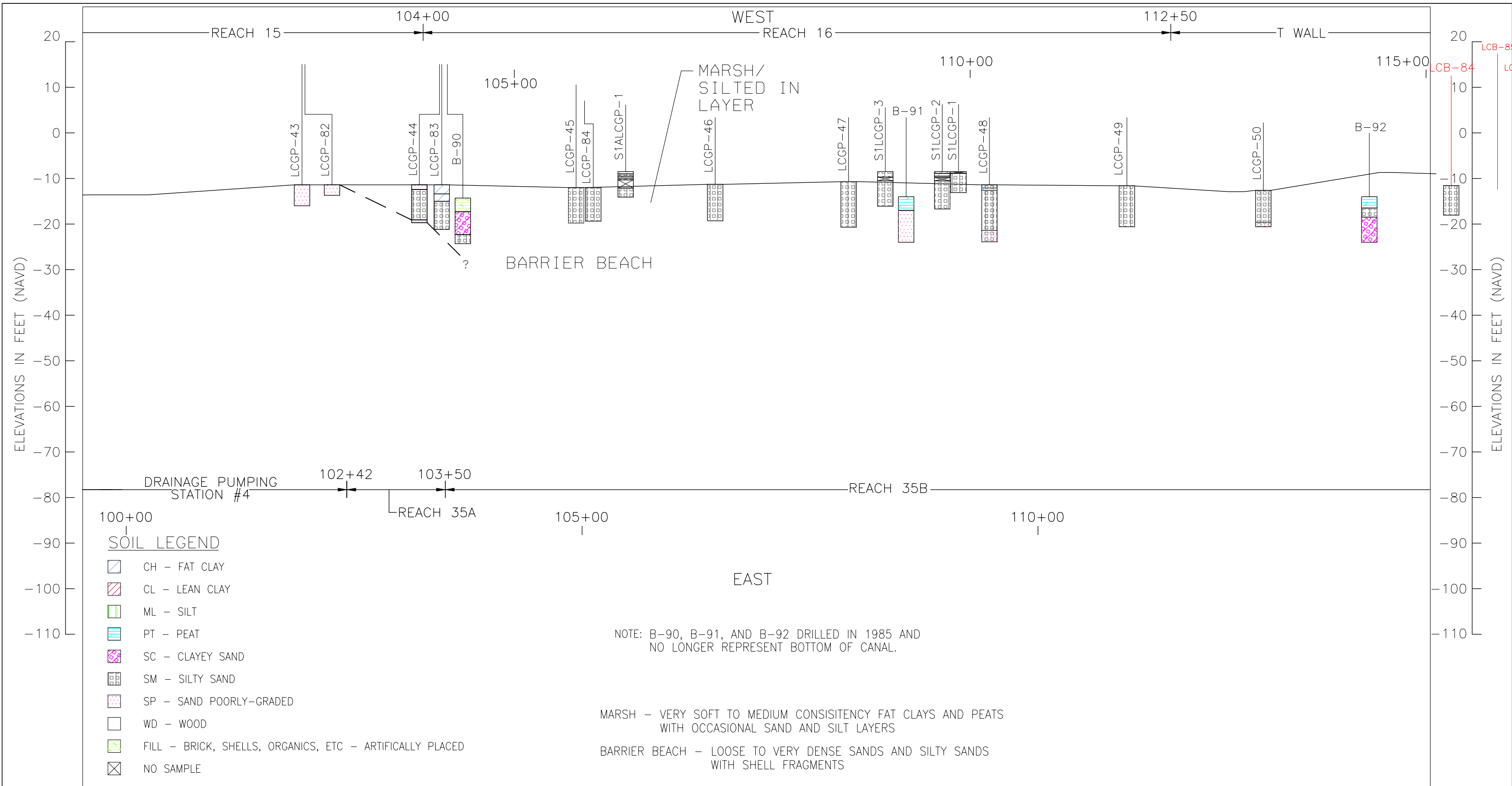
LAKE PONTCHARTRAIN AND VICINITY
LONDON AVENUE OUTFALL CANAL
CANAL CL

SOIL AND GEOLOGIC PROFILE

U.S. ARMY ENGINEER DISTRICT, NEW ORLEANS
CORP OF ENGINEERS
NEW ORLEANS, LOUISIANA

PLOT SCALE: 1 : 1	FILE NO. PLATE 56
DATE: 11-06-09	





HORIZONTAL SCALE IN FEET



NOTES:

1. ELEVATIONS FOR B-SERIES BORINGS WERE ESTIMATED BASED ON CANAL CONDITIONS AT THE TIME THE BORINGS WERE COMPLETED (SEE DM 19A). BORINGS ARE SHOWN FOR REFERENCE ONLY AND NOT INCORPORATED INTO PROFILE.

LAKE PONTCHARTRAIN AND VICINITY
LONDON AVENUE OUTFALL CANAL
CANAL CL

SOIL AND GEOLOGIC PROFILE



U.S. ARMY ENGINEER DISTRICT, NEW ORLEANS
CORP OF ENGINEERS
NEW ORLEANS, LOUISIANA

PLOT SCALE:
1 : 1
DATE: 11-06-09

FILE NO.
PLATE 58

