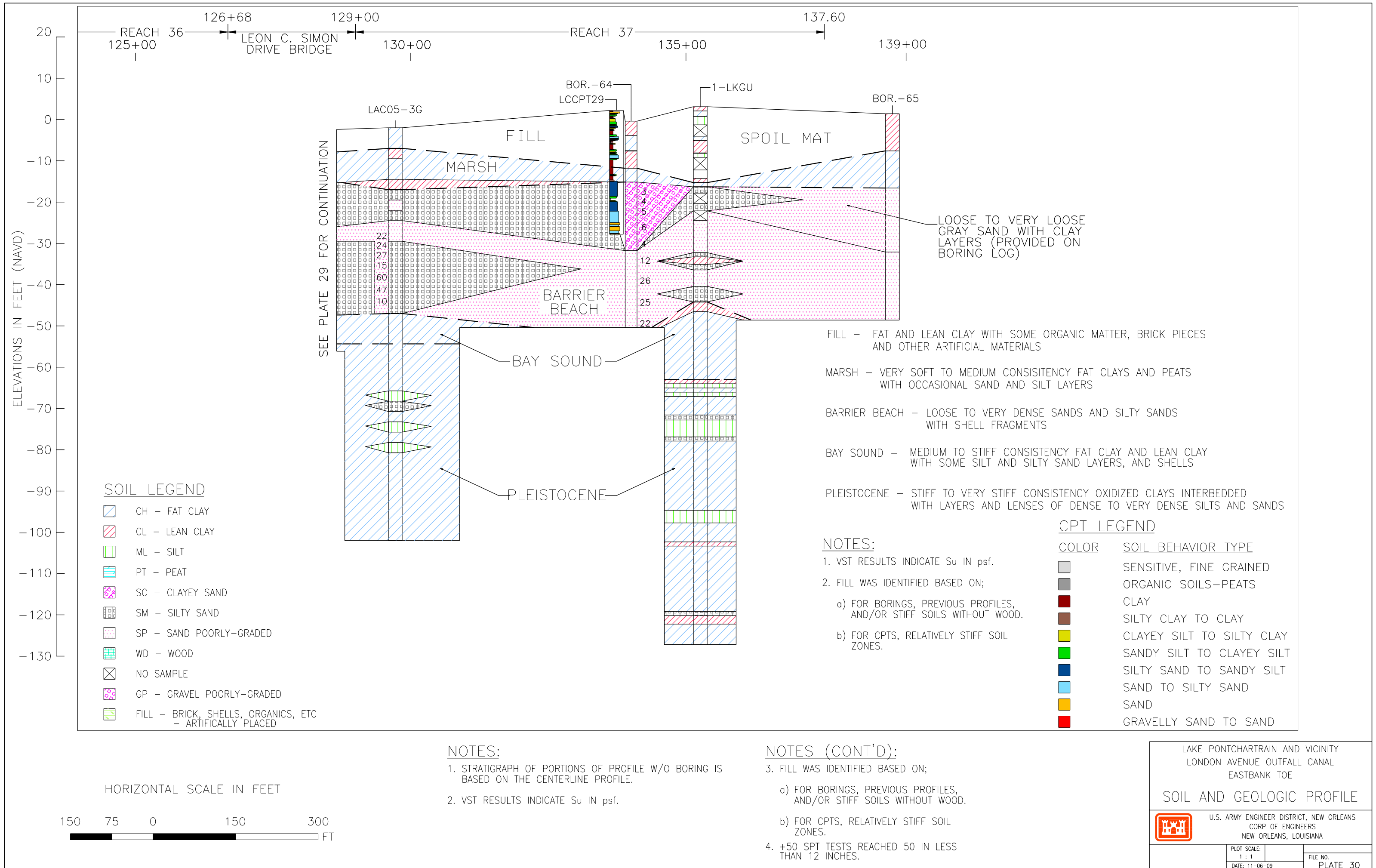


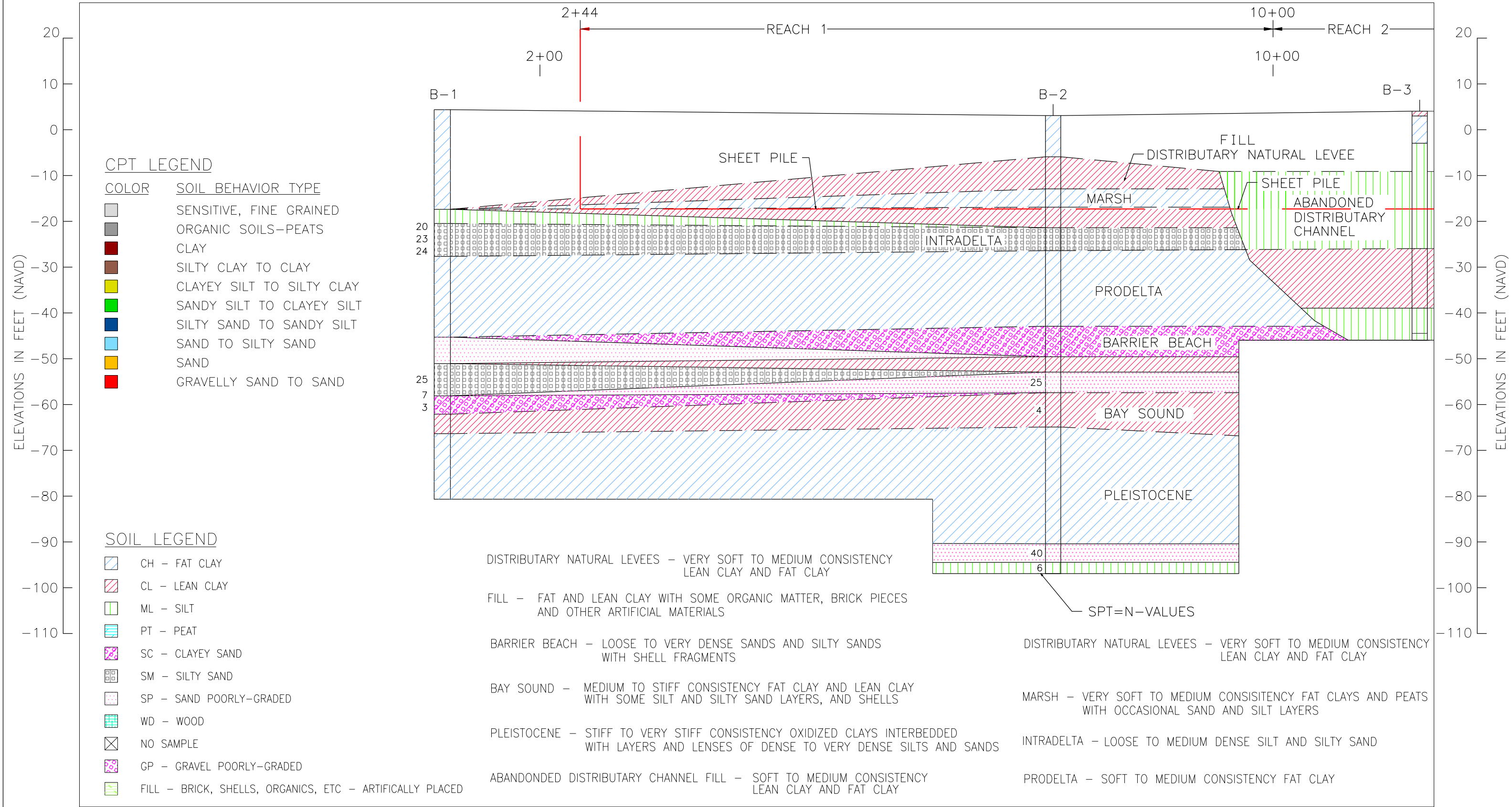
NOTES:

1. VST RESULTS INDICATE S_u IN psf.
2. FILL WAS IDENTIFIED BASED ON;
 - a) FOR BORINGS, PREVIOUS PROFILES, AND/OR STIFF SOILS WITHOUT WOOD.
 - b) FOR CPTS, RELATIVELY STIFF SOIL ZONES.

NOTES (CONT'D):

3. LECPT-4C LOCATED ON BRIDGE APPROACH SURFACE ELEVATION IGNORED.
4. +50 SPT TESTS REACHED 50 IN LESS THAN 12 INCHES.





NOTES:


- STRATIGRAPH OF PORTIONS OF PROFILE W/O BORING IS BASED ON THE CENTERLINE PROFILE.
- VST RESULTS INDICATE S_u IN psf.

NOTES (CONT'D):

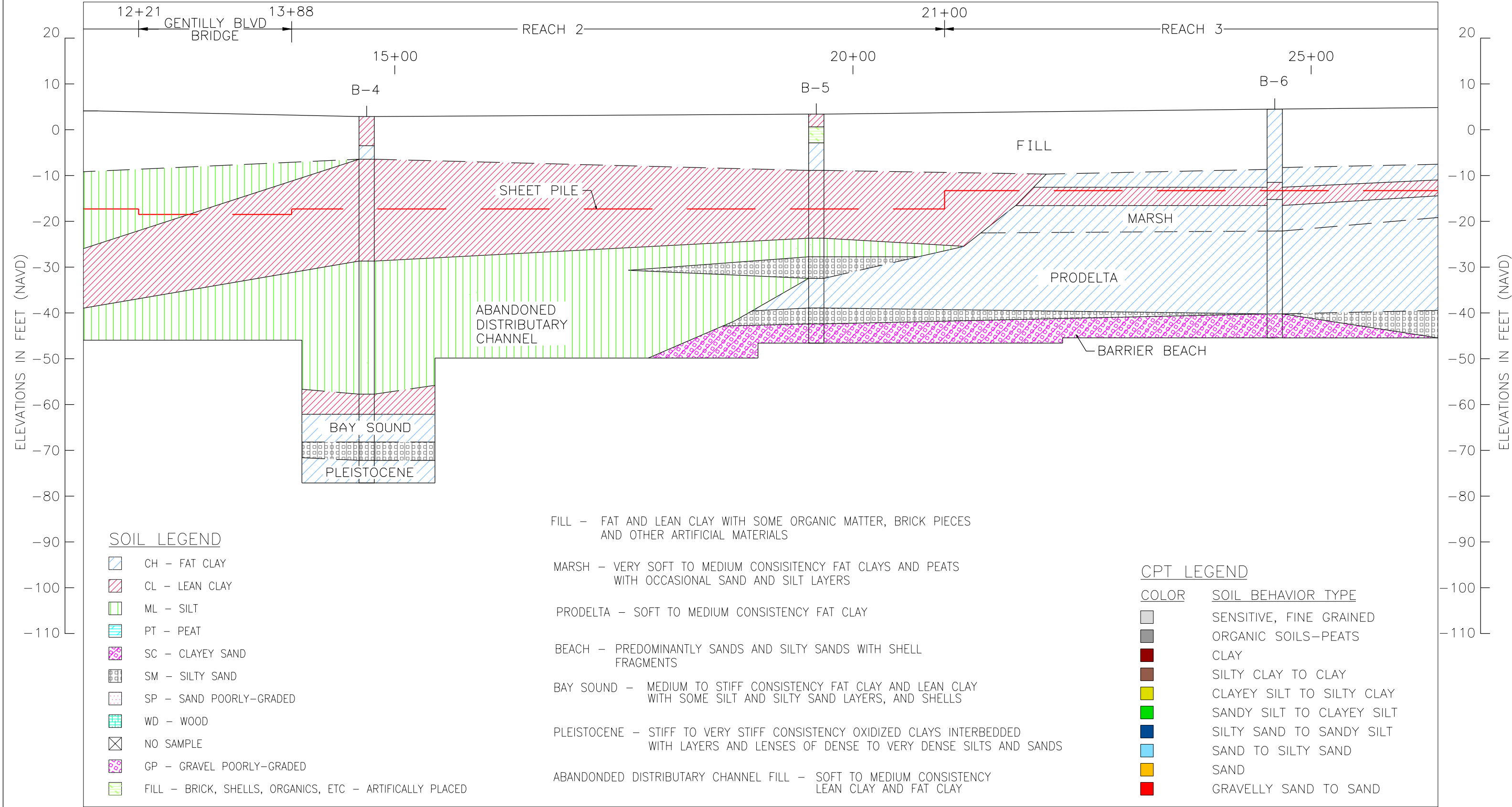
- FILL WAS IDENTIFIED BASED ON;
 - FOR BORINGS, PREVIOUS PROFILES, AND/OR STIFF SOILS WITHOUT WOOD.
 - FOR CPTS, RELATIVELY STIFF SOIL ZONES.
- +50 SPT TESTS REACHED 50 IN LESS THAN 12 INCHES.

LAKE PONTCHARTRAIN AND VICINITY
LONDON AVENUE OUTFALL CANAL
WESTBANK Q_L

SOIL AND GEOLOGIC PROFILE

 U.S. ARMY ENGINEER DISTRICT, NEW ORLEANS
CORP OF ENGINEERS
NEW ORLEANS, LOUISIANA

DESIGNED BY:	PLOT SCALE:	PLOT DATE:	CADD FILE:
DRAWN BY:	1 : 10		FILE NO.
CHECKED BY:	DATE:		PLATE 31



SOIL LEGEND

- CH - FAT CLAY
- CL - LEAN CLAY
- ML - SILT
- PT - PEAT
- SC - CLAYEY SAND
- SM - SILTY SAND
- SP - SAND POORLY-GRADED
- WD - WOOD
- NO SAMPLE
- GP - GRAVEL POORLY-GRADED
- FILL - BRICK, SHELLS, ORGANICS, ETC - ARTIFICIALLY PLACED

- FILL - FAT AND LEAN CLAY WITH SOME ORGANIC MATTER, BRICK PIECES AND OTHER ARTIFICIAL MATERIALS
- MARSH - VERY SOFT TO MEDIUM CONSISTENCY FAT CLAYS AND PEATS WITH OCCASIONAL SAND AND SILT LAYERS
- PRODELTA - SOFT TO MEDIUM CONSISTENCY FAT CLAY
- BEACH - PREDOMINANTLY SANDS AND SILTY SANDS WITH SHELL FRAGMENTS
- BAY SOUND - MEDIUM TO STIFF CONSISTENCY FAT CLAY AND LEAN CLAY WITH SOME SILT AND SILTY SAND LAYERS, AND SHELLS
- PLEISTOCENE - STIFF TO VERY STIFF CONSISTENCY OXIDIZED CLAYS INTERBEDDED WITH LAYERS AND LENSES OF DENSE TO VERY DENSE SILTS AND SANDS
- ABANDONDED DISTRIBUTARY CHANNEL FILL - SOFT TO MEDIUM CONSISTENCY LEAN CLAY AND FAT CLAY

CPT LEGEND

- | COLOR | SOIL BEHAVIOR TYPE |
|------------|---------------------------|
| Light Gray | SENSITIVE, FINE GRAINED |
| Dark Gray | ORGANIC SOILS-PEATS |
| Dark Red | CLAY |
| Brown | SILTY CLAY TO CLAY |
| Yellow | CLAYEY SILT TO SILTY CLAY |
| Green | SANDY SILT TO CLAYEY SILT |
| Dark Blue | SILTY SAND TO SANDY SILT |
| Light Blue | SAND TO SILTY SAND |
| Orange | SAND |
| Red | GRAVELLY SAND TO SAND |

NOTES:

1. STRATIGRAPH OF PORTIONS OF PROFILE W/O BORING IS BASED ON THE CENTERLINE PROFILE.
2. VST RESULTS INDICATE S_u IN psf.

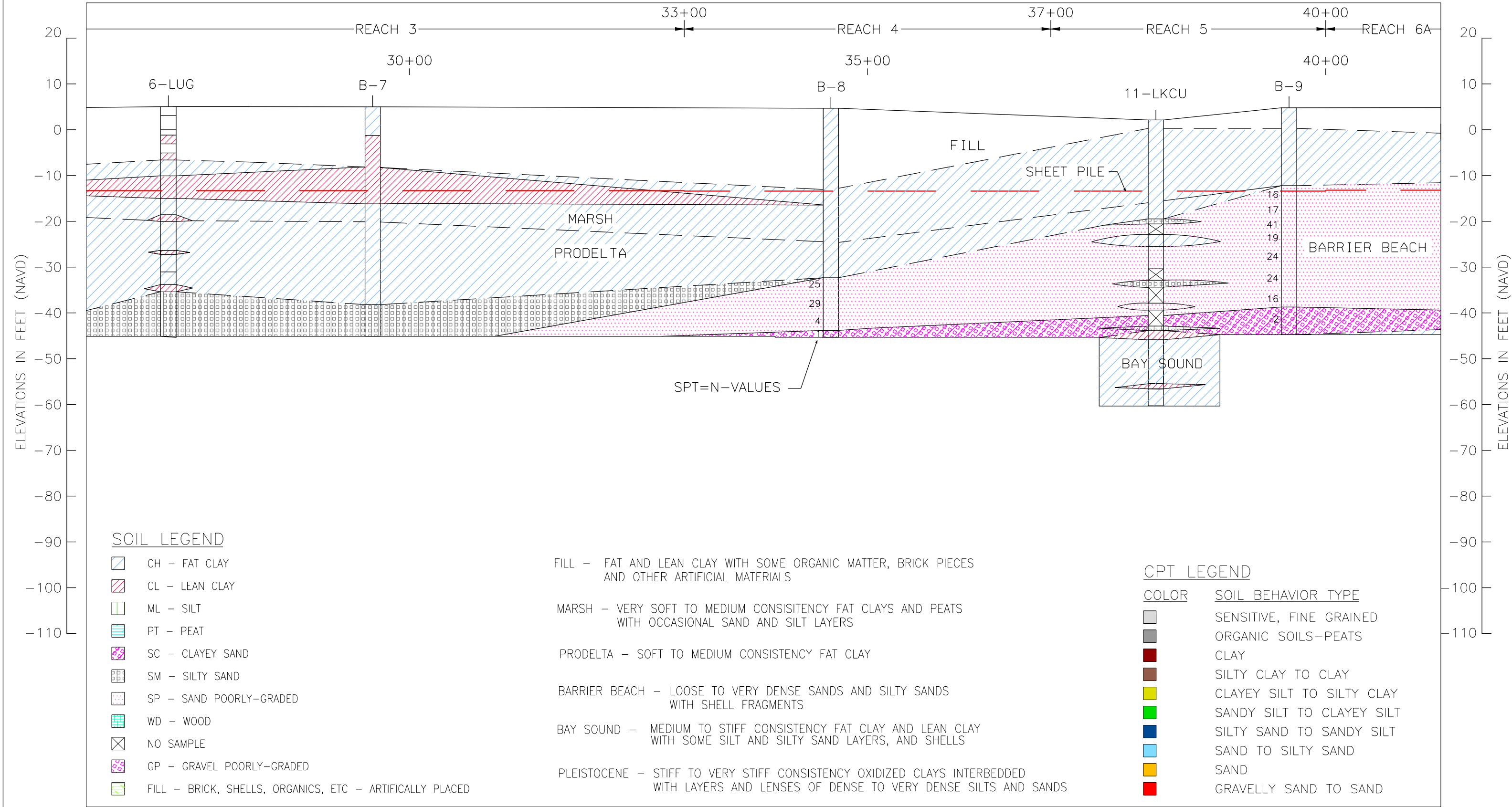
NOTES (CONT'D):

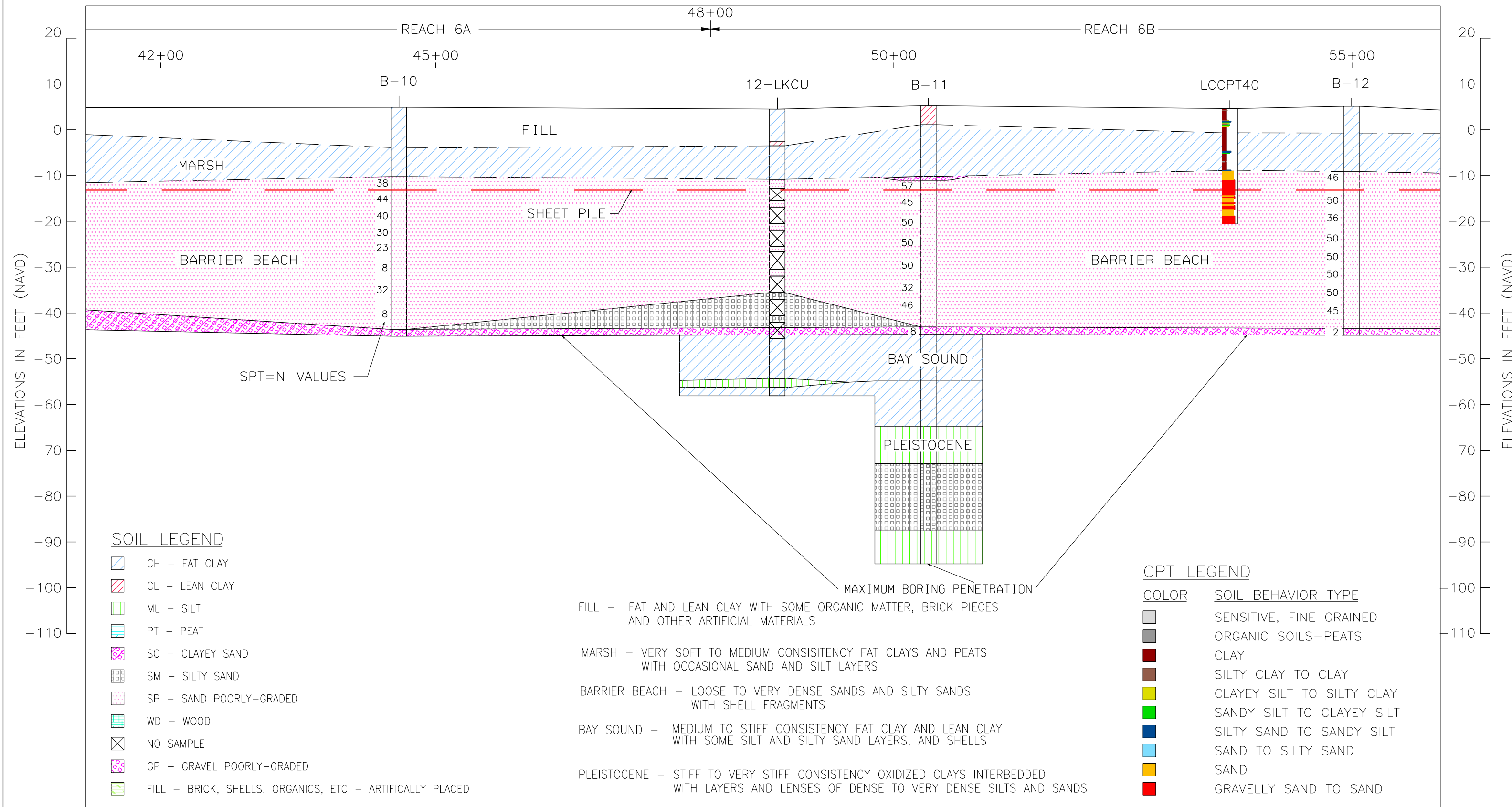
3. FILL WAS IDENTIFIED BASED ON:
 - a) FOR BORINGS, PREVIOUS PROFILES, AND/OR STIFF SOILS WITHOUT WOOD.
 - b) FOR CPTS, RELATIVELY STIFF SOIL ZONES.

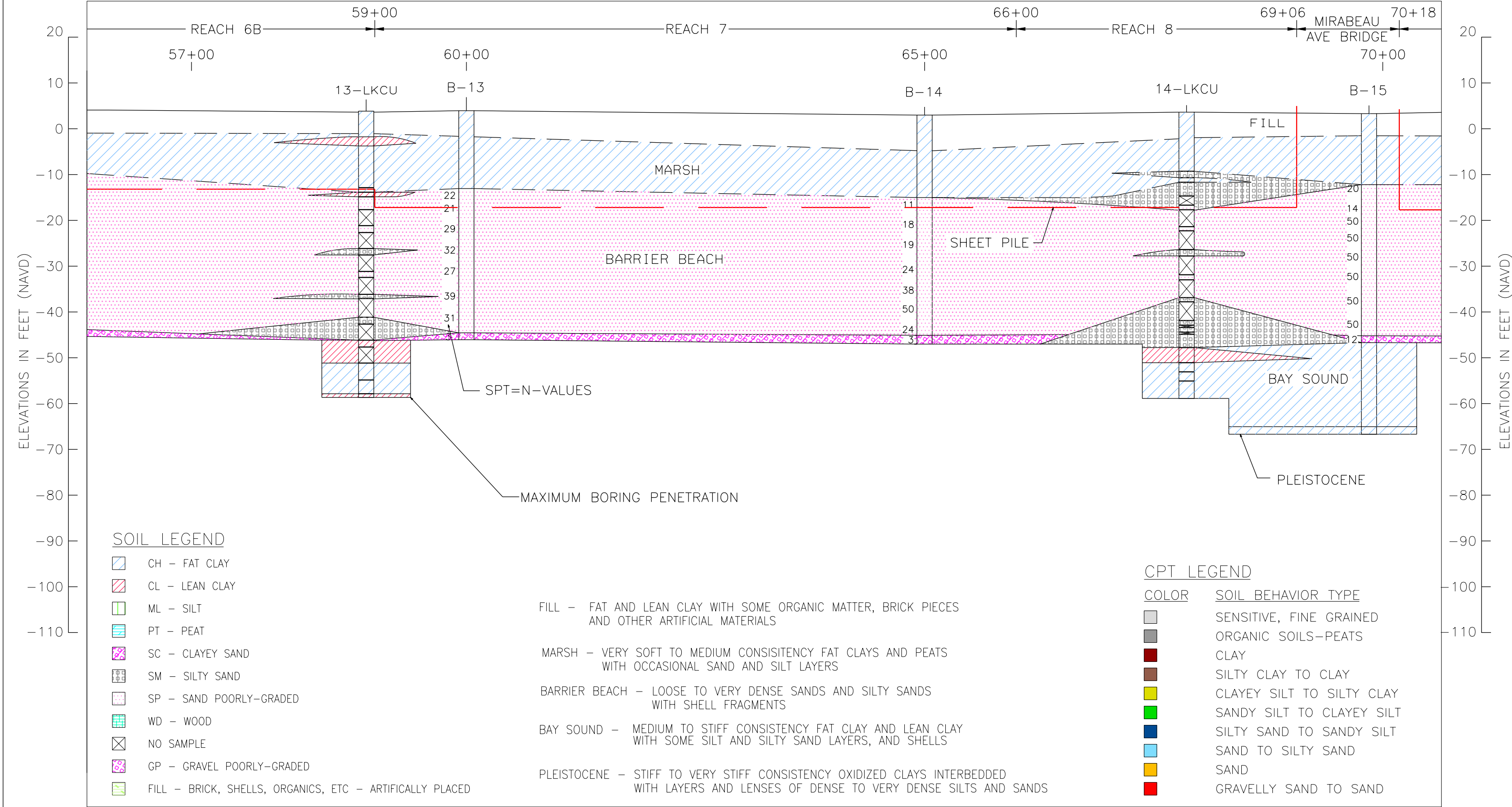
LAKE PONTCHARTRAIN AND VICINITY
LONDON AVENUE OUTFALL CANAL
WESTBANK Q_L
SOIL AND GEOLOGIC PROFILE

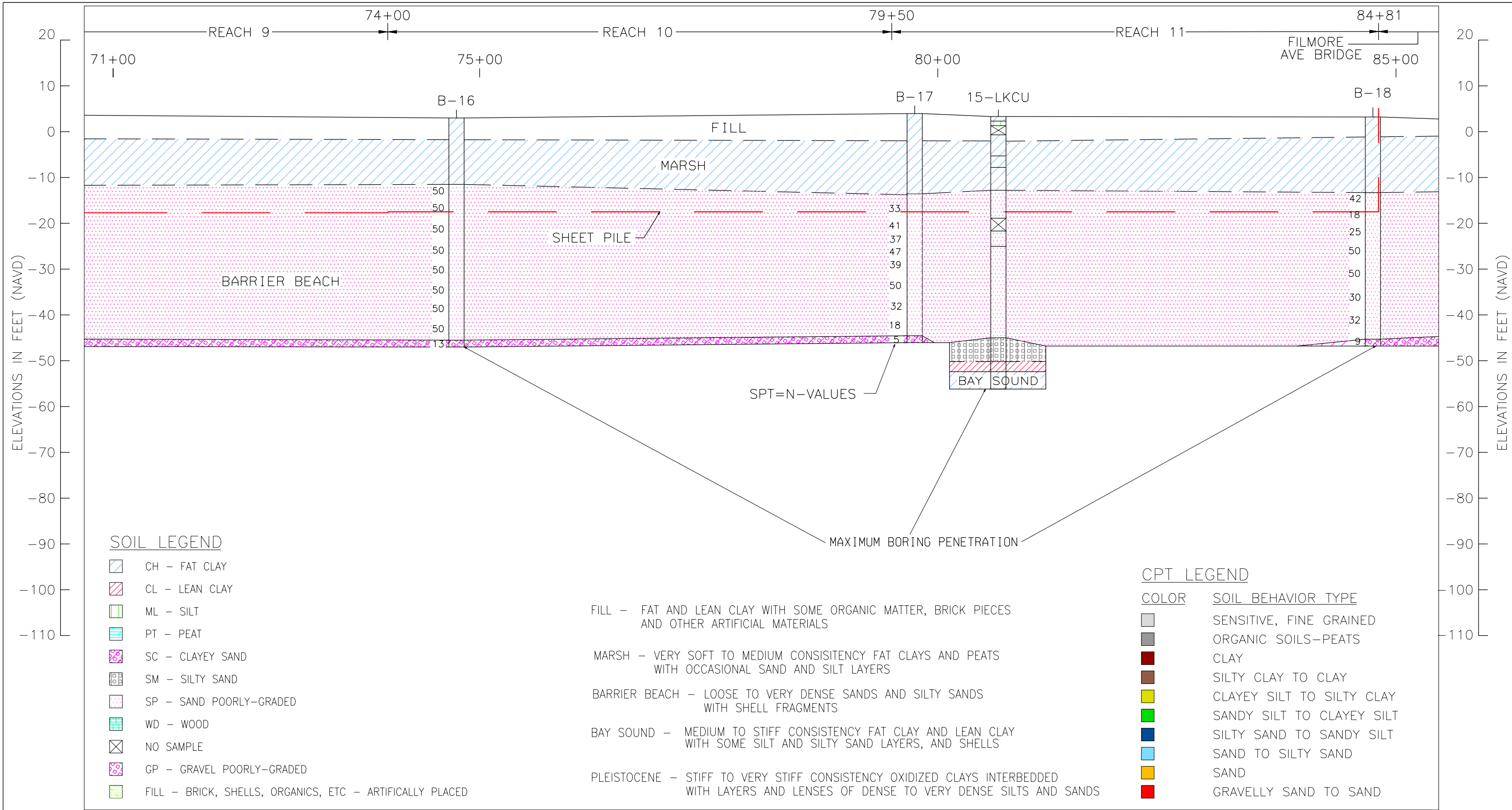
U.S. ARMY ENGINEER DISTRICT, NEW ORLEANS
CORP OF ENGINEERS
NEW ORLEANS, LOUISIANA

DESIGNED BY:	PLOT SCALE:	PLOT DATE:	CADD FILE:
DRAWN BY:	1 : 10		FILE NO.
CHECKED BY:	DATE:		PLATE 32



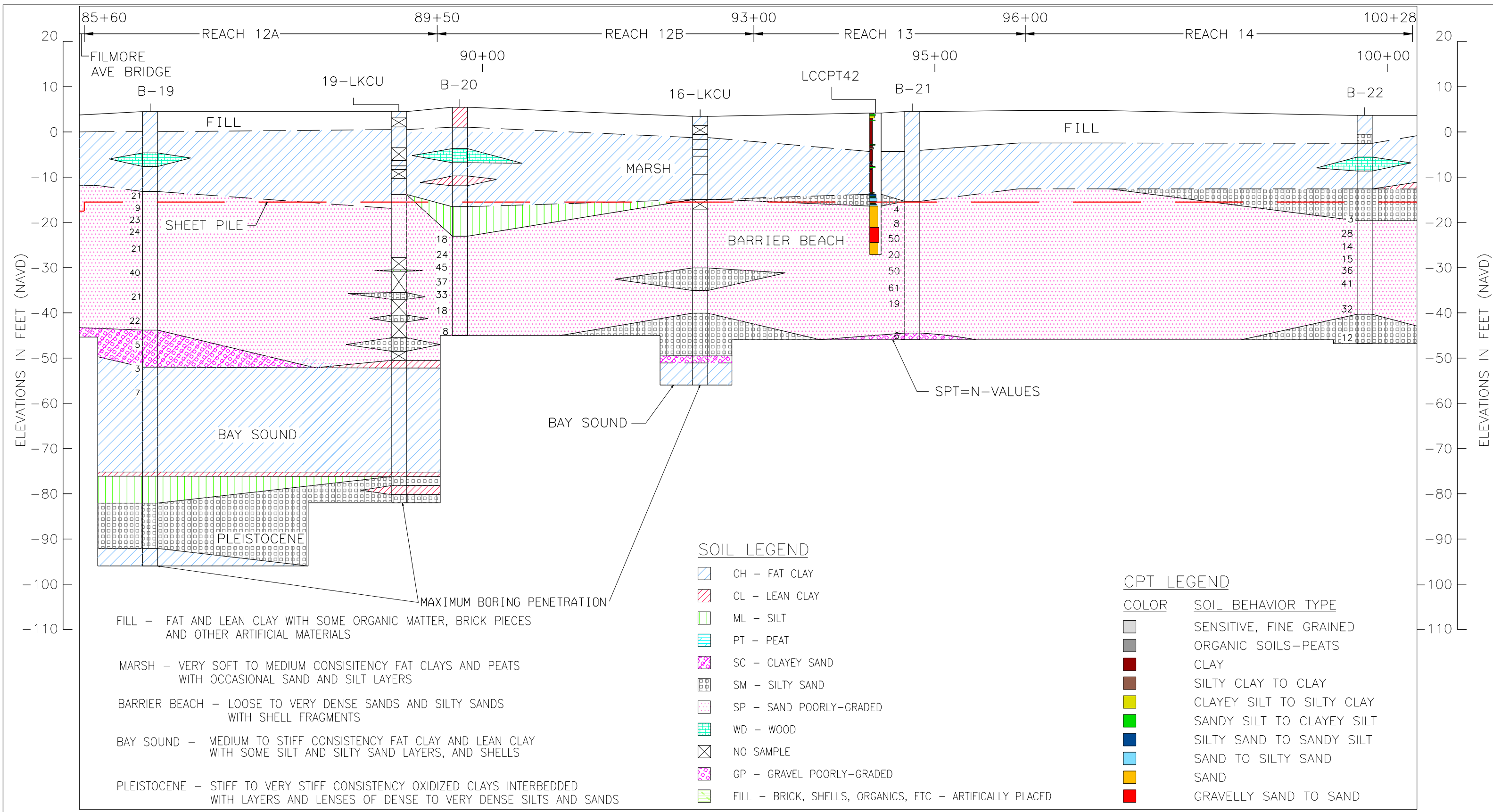






HORIZONTAL SCALE IN FEET





HORIZONTAL SCALE IN FEET

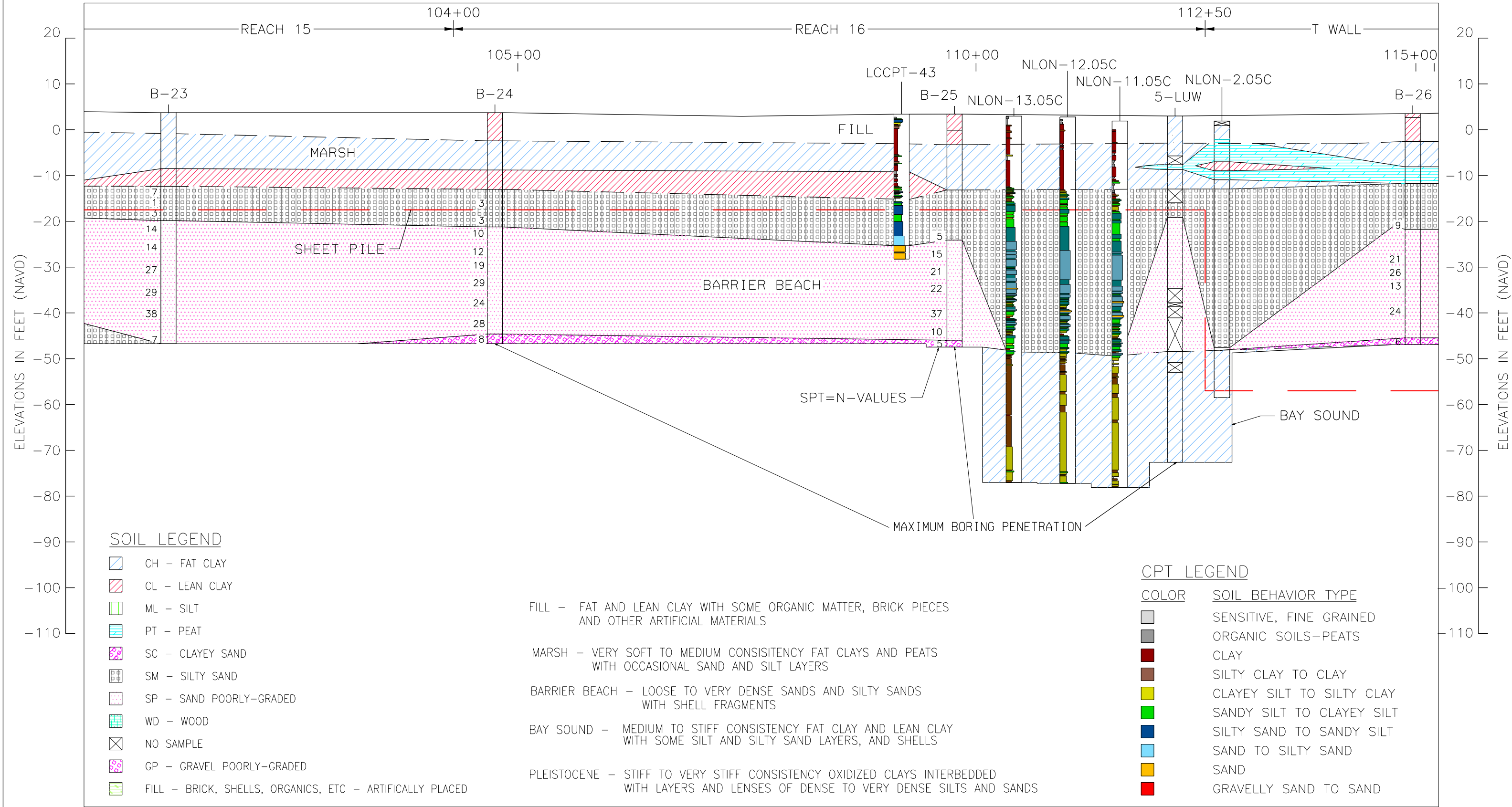


LAKE PONTCHARTRAIN AND VICINITY
LONDON AVENUE OUTFALL CANAL
WESTBANK Q_L

SOIL AND GEOLOGIC PROFILE

U.S. ARMY ENGINEER DISTRICT, NEW ORLEANS
CORP OF ENGINEERS
NEW ORLEANS, LOUISIANA

DESIGNED BY:	PLOT SCALE:	PLOT DATE:	CADD FILE:
DRAWN BY:	1 : 10		FILE NO.
CHECKED BY:	DATE:		PLATE 37



HORIZONTAL SCALE IN FEET



LAKE PONTCHARTRAIN AND VICINITY
LONDON AVENUE OUTFALL CANAL
WESTBANK Q_L

SOIL AND GEOLOGIC PROFILE

U.S. ARMY ENGINEER DISTRICT, NEW ORLEANS
CORP OF ENGINEERS
NEW ORLEANS, LOUISIANA

DESIGNED BY:	PLOT SCALE:	PLOT DATE:	CADD FILE:
DRAWN BY:	1 : 10		FILE NO.
CHECKED BY:	DATE:		PLATE 38