



NOTES:


1. THERE ARE NO BORINGS/CPTS IN THE TOE WITHIN THESE REACHES.
SEE CENTERLINE PROFILE FOR STRATIGRAPHY.

HORIZONTAL SCALE IN FEET

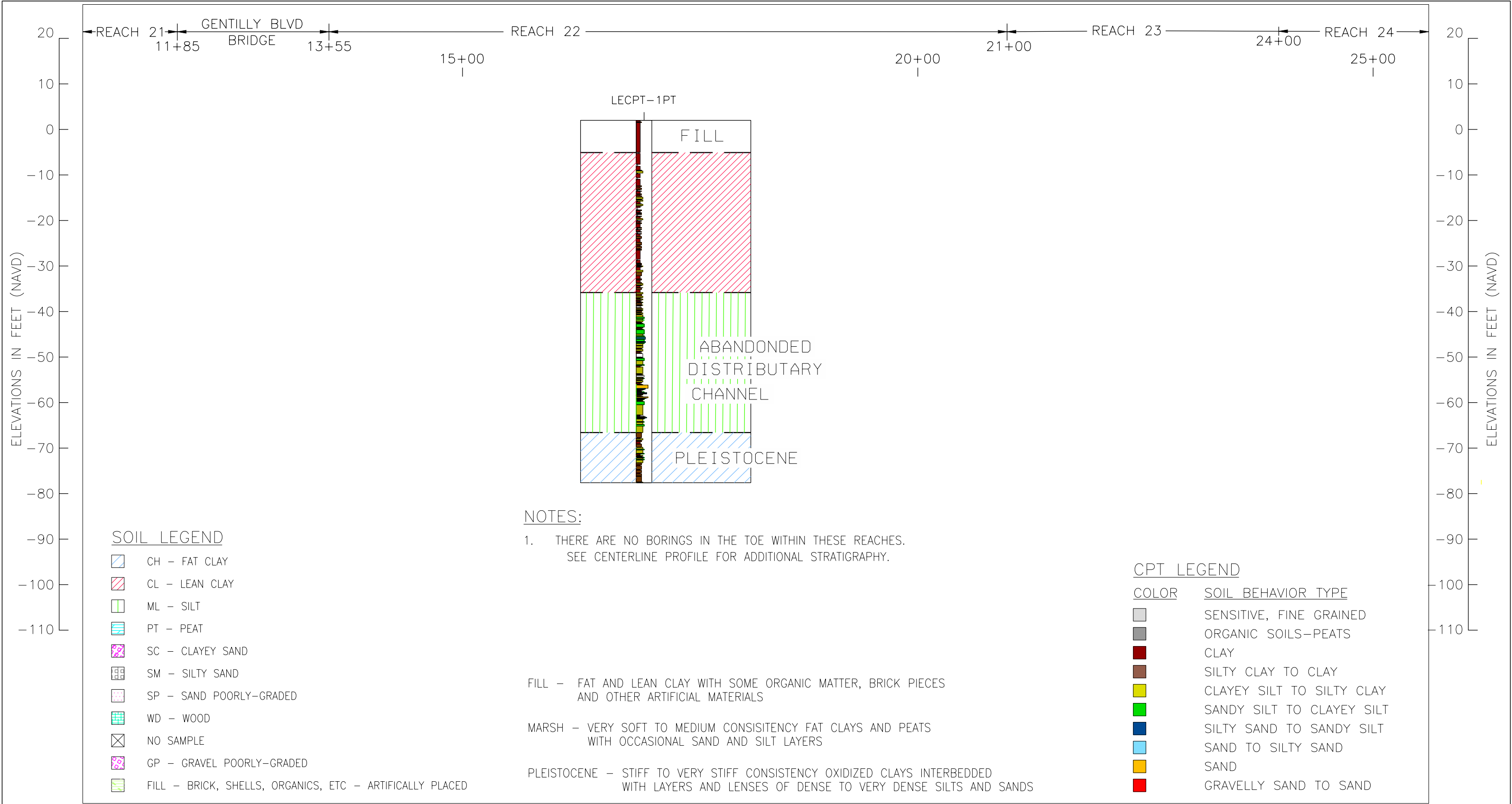


LAKE PONTCHARTRAIN AND VICINITY
LONDON AVENUE OUTFALL CANAL
EASTBANK TOE

SOIL AND GEOLOGIC PROFILE

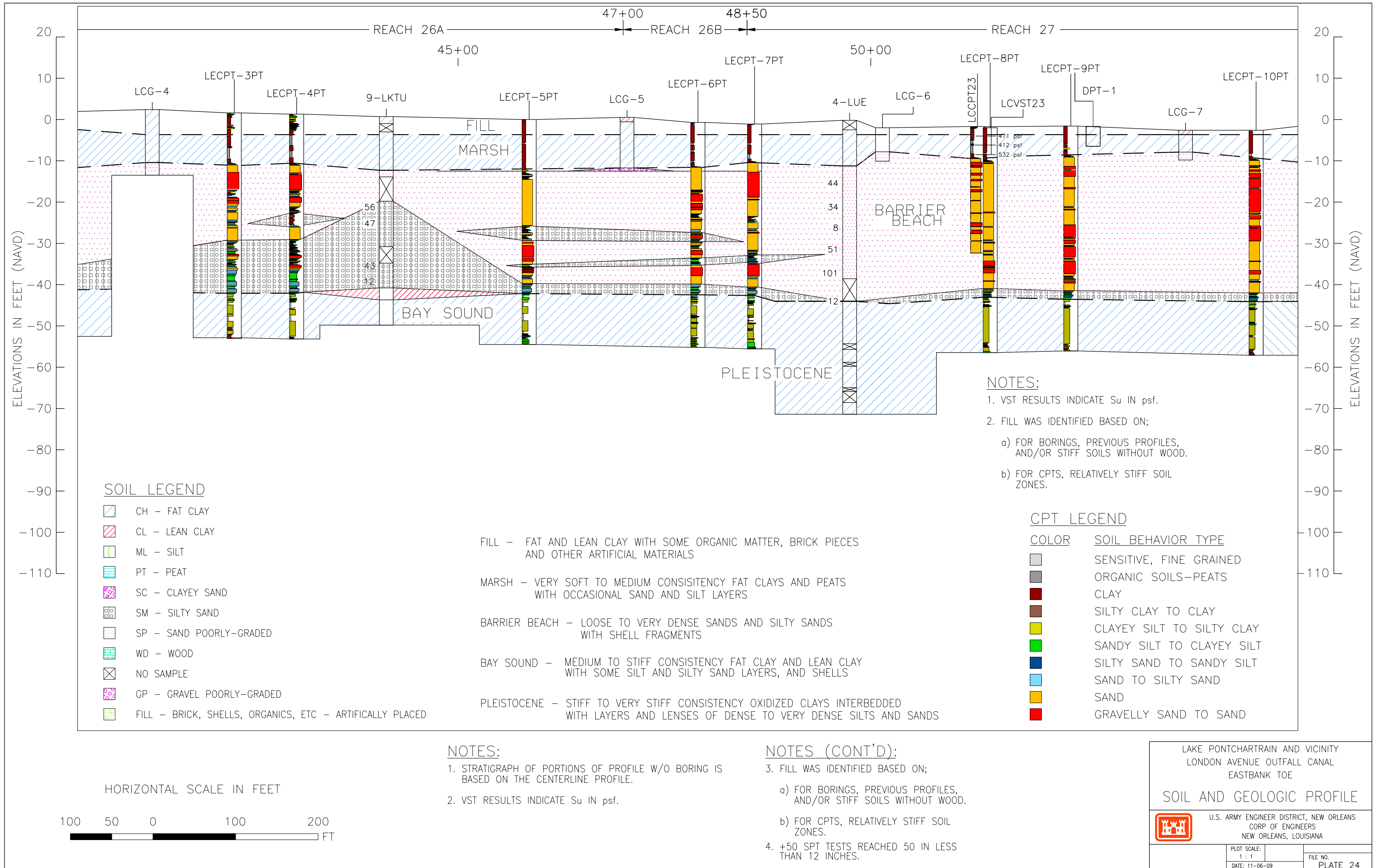
U.S. ARMY ENGINEER DISTRICT, NEW ORLEANS
CORP OF ENGINEERS
NEW ORLEANS, LOUISIANA

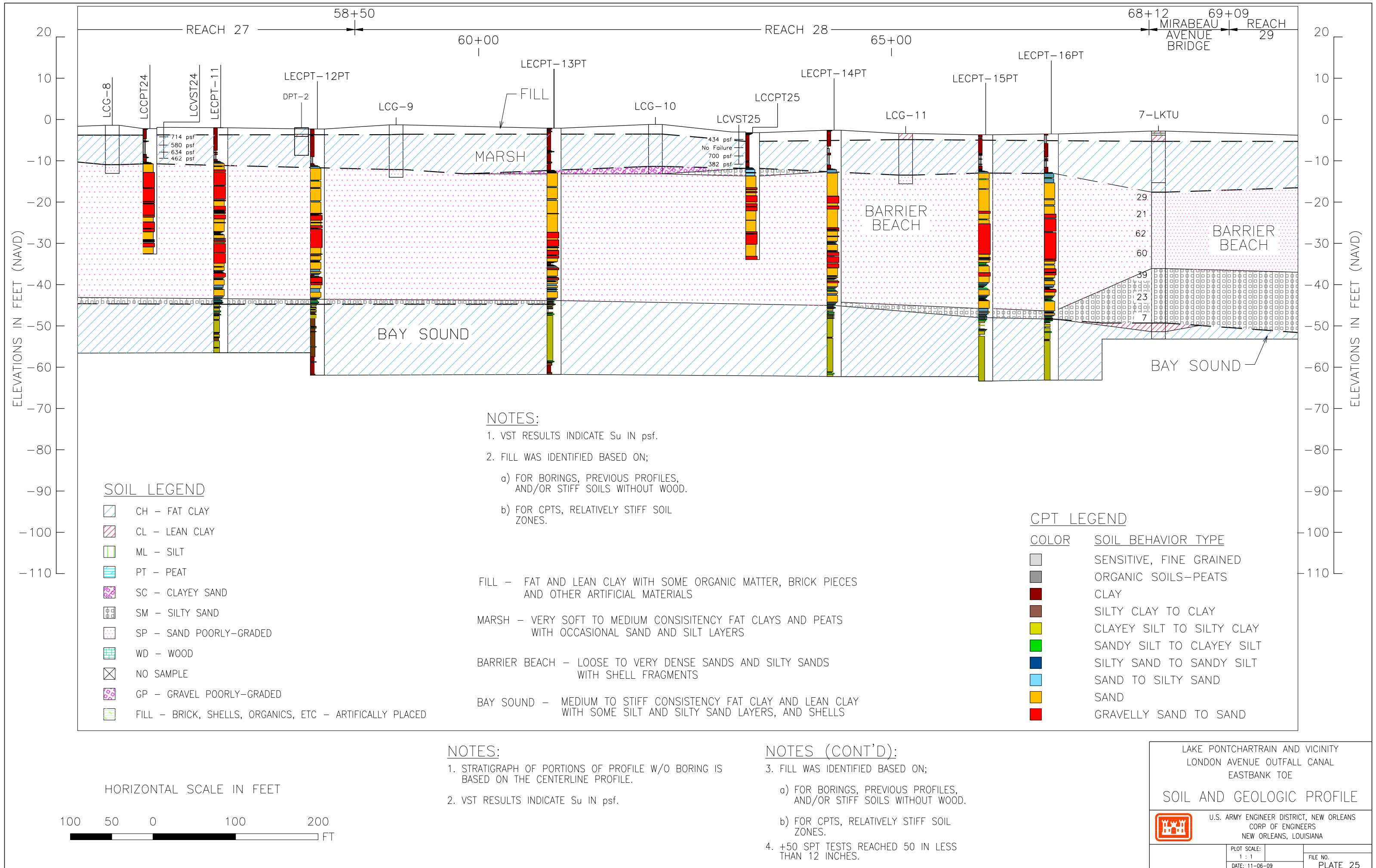
| | |
|----------------------|----------------------|
| PLOT SCALE: 1 : 1 | FILE NO. PLATE 21 |
| DATE: 11-06-09 | |

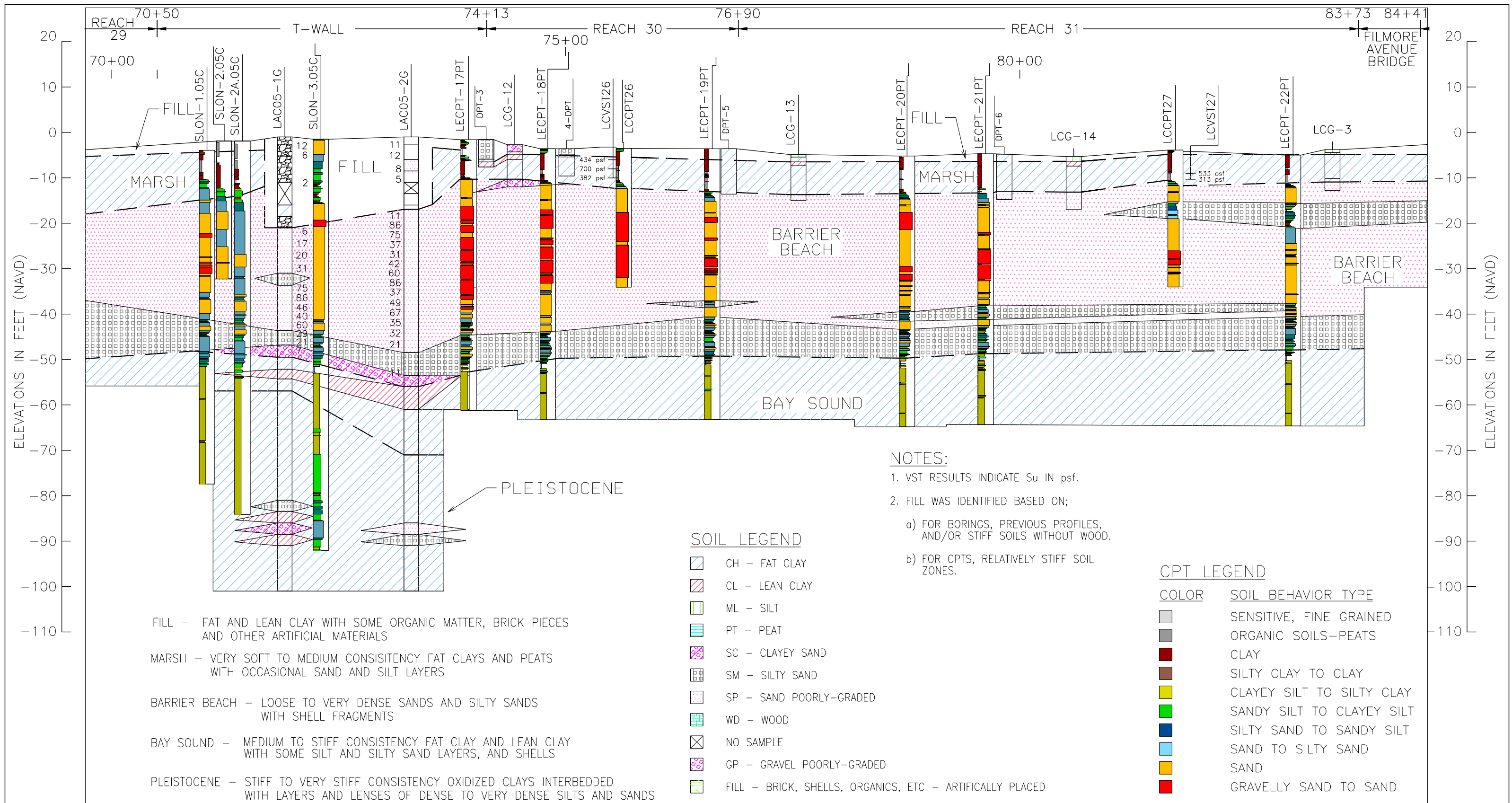


HORIZONTAL SCALE IN FEET









NOTES:

- STRATIGRAPH OF PORTIONS OF PROFILE W/O BORING IS BASED ON THE CENTERLINE PROFILE.
- VST RESULTS INDICATE S_u IN psf.

NOTES (CONT'D):

- FILL WAS IDENTIFIED BASED ON;
 - FOR BORINGS, PREVIOUS PROFILES, AND/OR STIFF SOILS WITHOUT WOOD.
 - FOR CPTS, RELATIVELY STIFF SOIL ZONES.
- +50 SPT TESTS REACHED 50 IN LESS THAN 12 INCHES.

HORIZONTAL SCALE IN FEET



LAKE PONTCHARTRAIN AND VICINITY
LONDON AVENUE OUTFALL CANAL
EASTBANK TOE

SOIL AND GEOLOGIC PROFILE



U.S. ARMY ENGINEER DISTRICT, NEW ORLEANS
CORP OF ENGINEERS
NEW ORLEANS, LOUISIANA

PLOT SCALE:
1 : 1
DATE: 11-06-09

FILE NO.
PLATE 26

