

# West Shore Lake Pontchartrain

## Stakeholder Update

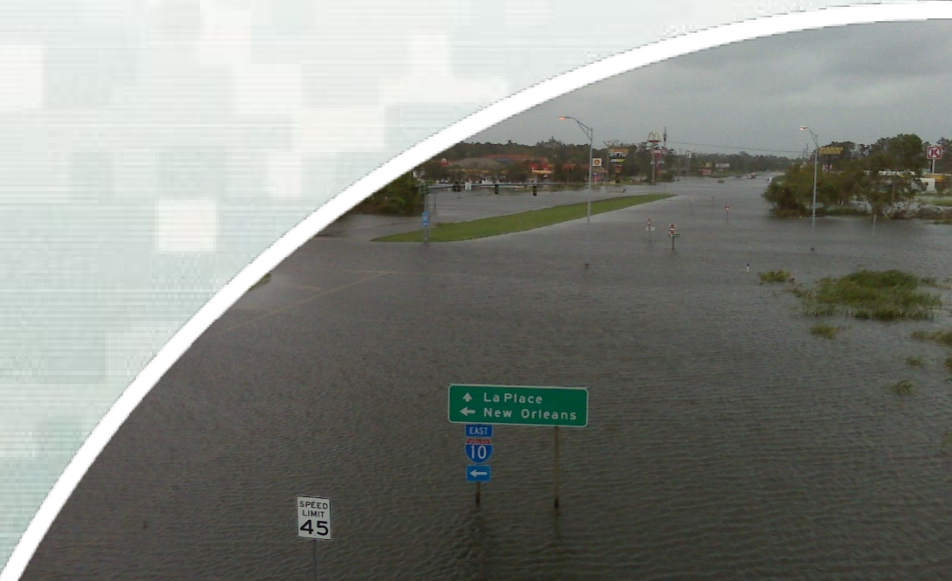
27 May 2020

**Chris Gilmore, PE, PMP**  
Sr. Project Manager  
New Orleans District  
U.S. Army Corps of Engineers



®

US Army Corps of Engineers  
**BUILDING STRONG**®



# Agenda

- Project Overview
- General Status
- Environmental Clearances
- Right-of-Entry
- Vegetation Clearing Contract
- Stock Pile Contract
- Pump Station Alternatives and Recommendation
- St. James Parish Update

# WEST SHORE LAKE PONTCHARTRAIN

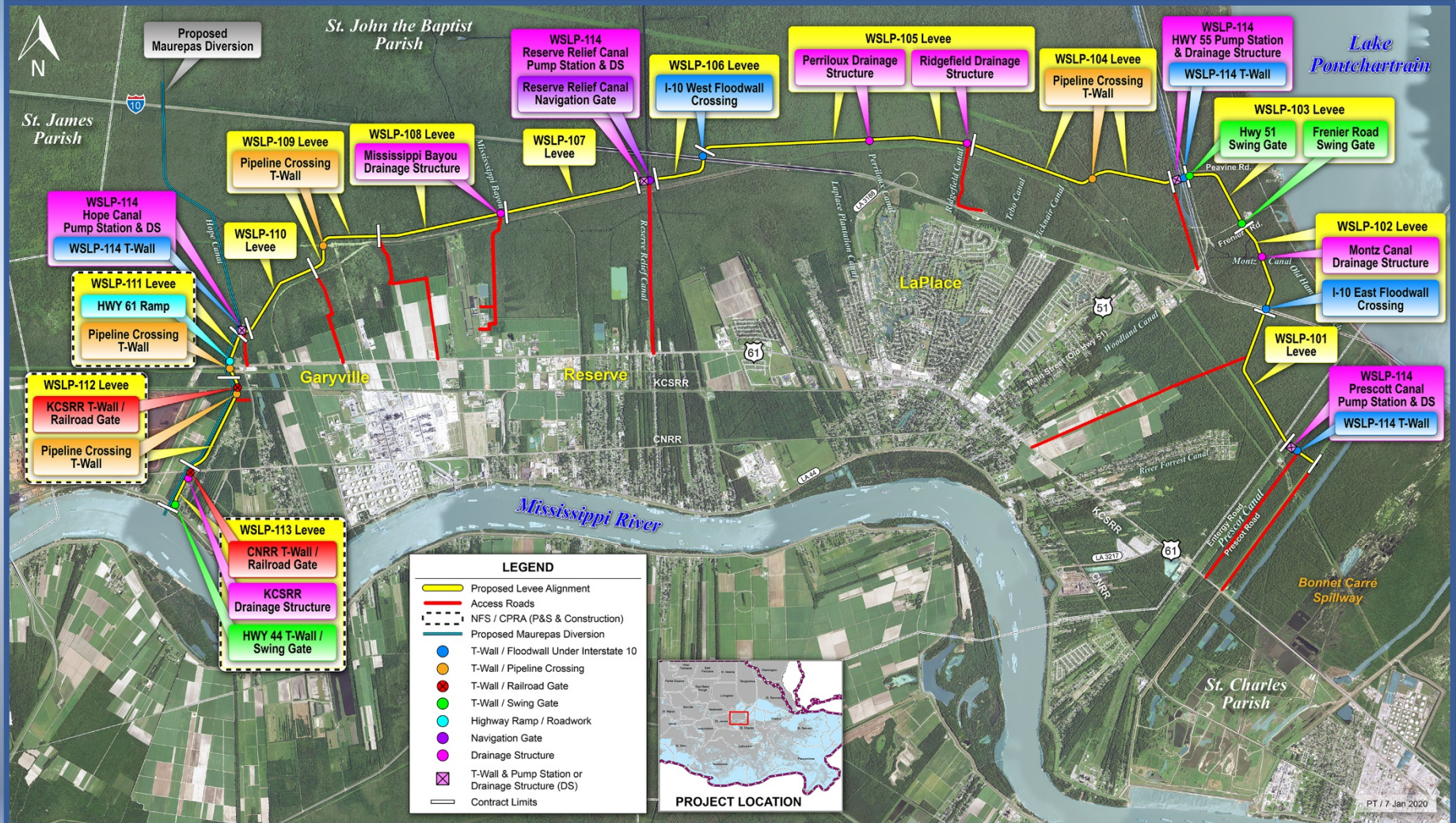
## *PROJECT OVERVIEW*

- Authorized as part of the Bipartisan Budget Act of 2018
  - ▶ Public Law 114-322; Section 1401(3)(5)
  - ▶ Authorized as a Hurricane and Storm Damage Risk Reduction System project
  - ▶ CPRA and Pontchartrain Levee District are the non-Federal Sponsors
  - ▶ Cost share – 65% Federal and 35% non-Federal
- **Project Description / Scope**
- Alignment is approximately 23 miles in length, consisting of 22.0 miles of levee and 1 mile of T-wall:
  - St. Charles Parish = 0.5 miles; St. John Parish = 18.0 miles; St. James Parish = 4.5 miles.
- The project includes 4 pump stations, 8 drainage structures, 3 gated road crossings, 2 railroad gates, approximately 35 utility relocations, 145 culvert valves / gates, and raising / floodproofing of a limited number of structures.
- 7.0 – 9.0 million cy of embankment material needed for levee construction.
- In excess of 1,000 acres of new right of way will need to be acquired.
- Habitat impacts will require compensation for approximately 1,090 AAHU's
- \$760M appropriation (includes real estate, design, construction, etc.)





# West Shore Lake Pontchartrain







# WSLP - St James Parish





# General Status

- Levee construction reaches have been optimized to maximize construction access (shown on following page)
  - ▶ Currently have 13 levee contracts and 1 pump station contract
- Continue to coordinate with CPRA regarding design and construction of the west alignment and the State's Maurepas Diversion Project
- Vegetation clearing of levee alignment for field investigations complete. Contractor has demobilized off site.
- Field Investigations 100% complete.
- Detailed designs for most reaches began in January 2020.
  - ▶ WSLP 109 design task order awarded on 06 Mar 2020
  - ▶ WSLP 114 (pump station design) design contract awarded and underway
  - ▶ **WSLP 105/108 design contract awarded and underway**
  - ▶ **WSLP 102/106 design task order scheduled to be awarded end of June**
- Real Estate efforts on-going.
- Pushing to begin constructing access roads and sand base in 2020. Scheduled to award first levee construction late 2020.
- Project Website continually updated/improved
  - ▶ [www.mvn.usace.army.mil/About/Projects/West-Shore-Lake-Pontchartrain/](http://www.mvn.usace.army.mil/About/Projects/West-Shore-Lake-Pontchartrain/)
  - ▶ Google "West Shore Lake Pontchartrain"<sub>6</sub>

# Levee Borrow Requirements

- Currently estimating a need of about 7.0M – 9.0M cubic yards of levee material for construction
  - ▶ Will cause a significant increase in truck traffic in St. John during construction
- Bonnet Carre' Spillway (BCS)
  - ▶ BCS currently has 3.5M CY readily available
  - ▶ Access issues due to high stages on Mississippi River
- Will continue to pursue additional Government Furnished borrow
- Previously used Contractor Furnished Borrow List not authorized to be used for the WSLP project
- Approved to use commercially available borrow sources
  - ▶ Currently developing a “Sources Sought” type solicitation to identify commercial borrow sources
  - ▶ Requirements to become a commercial borrow source will be provided in the Sources Sought solicitation
  - ▶ Sources Sought solicitation being finalized and will be issued in approximately 2 weeks

# WEST SHORE LAKE PONTCHARTRAIN

## TENTATIVE *DELIVERY PLAN*

| <b>Contract ID</b> | <b>Description</b>                                  | <b>Acquisition Strategy</b> | <b>Construction Complete Date</b> | <b>Estimated Contract Value</b> |
|--------------------|---|-----------------------------|-----------------------------------|---------------------------------|
| WSLP 101           | Levee   | Small Business              | 3Q 2023                           | \$25M - \$50M                   |
| WSLP 102           | Levee, Floodwall, Drainage Structure(s)             | Small Business              | 4Q 2022                           | \$25M - \$50M                   |
| WSLP 103           | Levee, Floodwall, Flood Gate                        | Small Business              | 1Q 2023                           | \$15M - \$25M                   |
| WSLP 104           | Levee, Floodwall, Utility Crossings                 | Small Business              | 3Q 2023                           | \$25M - \$50M                   |
| WSLP 105           | Levee, Floodwall, Drainage Structure(s)             | Small Business              | 2Q 2023                           | \$35M - \$55M                   |
| WSLP 106           | Levee and Floodwall                                 | Small Business              | 2Q 2023                           | \$15M - \$25M                   |
| WSLP 107           | Levee, Floodwall, Drainage Structure(s)             | Small Business              | 1Q 2023                           | \$15M - \$25M                   |
| WSLP 108           | Levee   | Small Business              | 1Q 2023                           | \$15M - \$25M                   |
| WSLP 109           | Levee, Floodwall, Utility Crossings                 | Small Business              | 1Q 2023                           | \$5M - \$20M                    |
| WSLP 110           | Levee   | Small Business              | 1Q 2023                           | \$5M - \$20M                    |
| WSLP 111           | Levee, Highway Ramp, Utility Crossings              | Small Business              | 4Q 2022                           | \$20M - \$40M                   |
| WSLP 112           | Levee, Rail Road Gate, Floodwall, Utility Crossings | Small Business              | 3Q 2023                           | \$5M - \$20M                    |
| WSLP 113           | Levee, Floodwall, Rail Road Gate                    | Small Business              | 2Q 2023                           | \$5M - \$20M                    |
| WSLP 114           | Pump Stations                                       | Unrestricted/Best Value     | 3Q 2023                           | \$150M - \$250M                 |

Note: Project requirements and schedule are subject to change as designs are refined and impacts identified.



# WEST SHORE LAKE PONTCHARTRAIN

## MISCELLANEOUS CONTRACTS

- Currently Plan to issue several smaller contracts for various pre-construction efforts
  - ▶ Stock pile contracts
    - Stockpile Contract #1 – Solicitation on hold
    - Stockpile Contract #2 – awarded on 20 Dec 2019, NTP issued 02 Jan 2020, **currently on hold due to spillway being flooded, river stages going down and may be able to begin work sometime in June**
    - Sand Stockpile Contract – P&S being developed
  - ▶ **Possible** sand base placement and/or Access Road contract(s)
  - ▶ **Additional vegetation clearing contract(s) unlikely**
- May issue separate contracts or combine the above efforts

# Environmental Clearances

- Additional environmental clearances are required before construction can begin due to shift in portions of the levee alignment
- Supplemental Environmental Assessment for Construction is underway
  - ▶ Updating the project description
  - ▶ Updating project impacts
    - Direct
    - Indirect
- Public review **ended on 23 Apr 20**
  - ▶ **Comments being compiled and responses will be prepared**
- Environmental clearances scheduled to be complete o/a **15 Jun 20**



# Real Estate/Right-of-Entry

- All ROE obtained for field investigations
- Right-of-Way for Construction Activities
  - ▶ PLD and CPRA have begun title research for the currently identified properties
- All ROW requests for construction of the entire project scheduled to be provided to NFS by end of May

# Vegetation Clearing and Field Investigation Contracts

- Vegetation Clearing Contracts (Field Investigations)
  - ▶ Awarded the first vegetation clearing contract on 15 May 19
    - Awarded to Quality First Marine
    - Award amount = \$2,478,285.67
  - ▶ Awarded the second vegetation clearing contract on 12 Jul 19
    - Awarded to Quality First Marine
    - Award amount = \$2,594,932.28
  - ▶ All work complete
  
- Boring Task Order Awarded on 18 Jul 19
  - ▶ All field investigations complete
  - ▶ All testing of the boring data scheduled to be complete by mid-March



# USACE Pump Station and Drainage Structure Recommendations

- Current Recommendations
  - ▶ Pump Stations
    - Hope Canal - 800 cfs
    - Reserve Canal - 2,000 cfs
    - I-55 - 2,000 cfs
    - Prescott Canal - 800 cfs
  - ▶ Drainage Structures
    - 25 total openings in 8 drainage structures
    - Increase of 13 openings
  - ▶ Interior Drainage Canal
    - 100 ft. top width; 30 ft. bottom width; 8 ft. deep
  - ▶ Scheduling a meeting with St. John Parish to discuss drainage patterns
- Met with St. John the Baptist Parish staff to address some concerns with the pump station locations prior to finalizing path forward
- **VE Study conducted to investigate options for cost savings**
  - ▶ **Draft report to be submitted in approximately 2-weeks**

# St. James Parish

## General Status

- Currently authorized project consists of ring levees, flap valves on the culverts under Hwy 3125, flood proofing of a small number of structures
- Investigating an additional alternative to expand the ring levees and to eliminate the flap valves
  - ▶ Developing a cost for this alternative
  - ▶ Developing a cost per linear foot of levee
- Risk analysis of the flap valves scheduled to begin in early March 2020 – **delayed due to COVID-19**
- Value Engineering Study scheduled **conducted week of 04 May 2020**
  - ▶ **Draft report scheduled to be provided on 22 May 2020 but a 2-week extension was requested**
- Based on the outcome of these two efforts, may be able to recommend implementation of an alternative to the flap valves
- Right-of-Entry on-going





# WSLP - St James Parish





# Real Estate/Right-of-Entry

- All ROE obtained for field investigations
  - ▶ ROE request is being revised to account for the larger ring levee alternative
- Will notify residents prior to beginning any field investigations
- Field investigations may require entry into homeowner's back yards
- Updated ROE sent to NFS
  - ▶ USACE has asked the NFS to hold the ROE until the VE Study draft report is received

