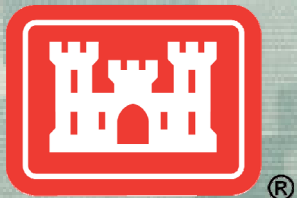


West Shore Lake Pontchartrain

Stakeholder Update

24 June 2020

Chris Gilmore, PE, PMP
Sr. Project Manager
New Orleans District
U.S. Army Corps of Engineers



US Army Corps of Engineers
BUILDING STRONG[®]



Agenda

- Project Overview
- General Status
- Environmental Clearances
- Right-of-Entry
- Vegetation Clearing Contract
- Stock Pile Contract
- Pump Station Alternatives and Recommendation
- St. James Parish Update

<https://www.mvn.usace.army.mil/About/Projects/West-Shore-Lake-Pontchartrain/>

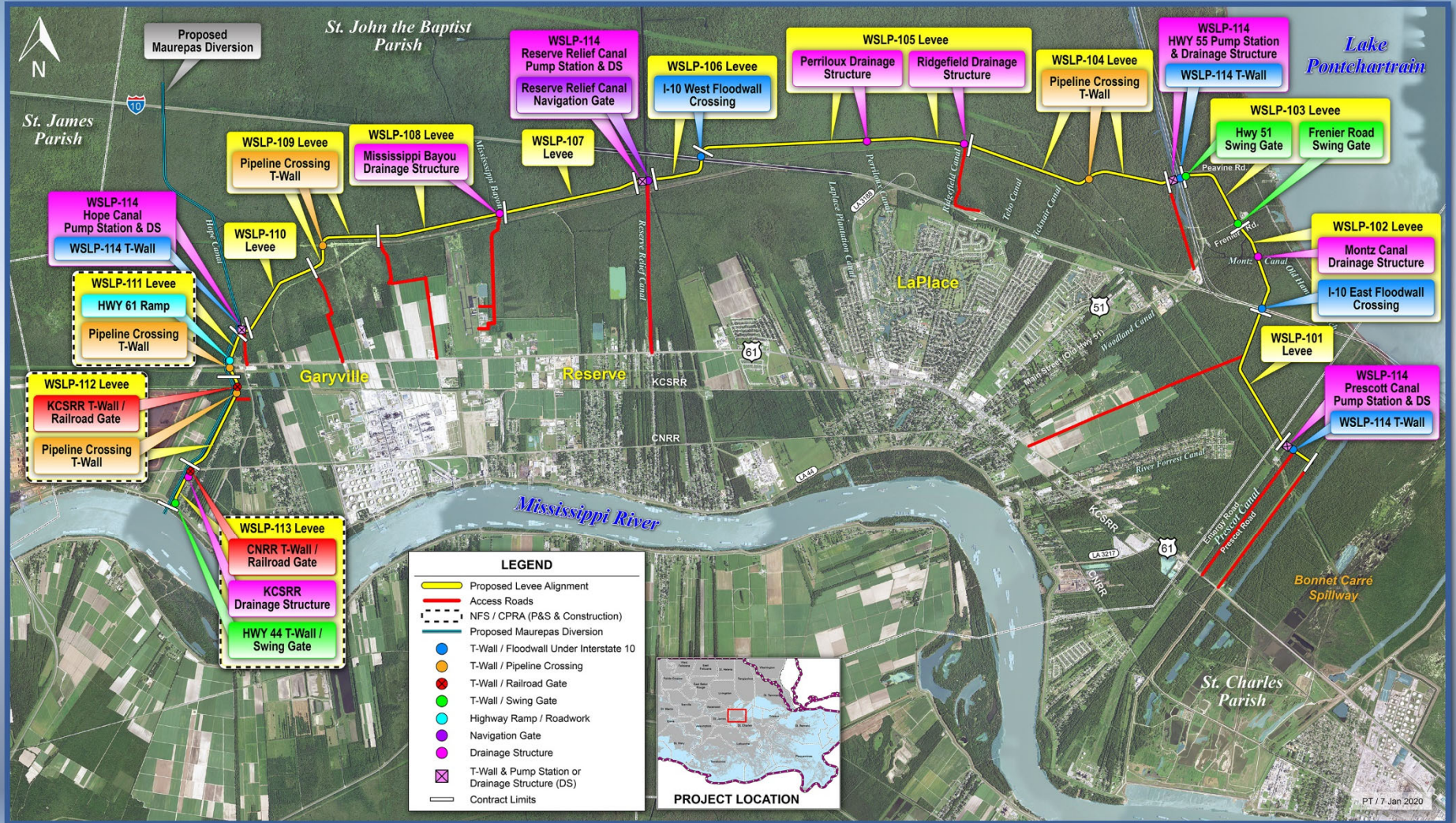
WEST SHORE LAKE PONTCHARTRAIN

PROJECT OVERVIEW

- Authorized as part of the Bipartisan Budget Act of 2018
 - ▶ Public Law 114-322; Section 1401(3)(5)
 - ▶ Authorized as a Hurricane and Storm Damage Risk Reduction System project
 - ▶ CPRA and Pontchartrain Levee District are the non-Federal Sponsors
 - ▶ Cost share – 65% Federal and 35% non-Federal
- **Project Description / Scope**
- Alignment is approximately 23 miles in length, consisting of 22.0 miles of levee and 1 mile of T-wall:
 - St. Charles Parish = 0.5 miles; St. John Parish = 18.0 miles; St. James Parish = 4.5 miles.
- The project includes 4 pump stations, 8 drainage structures, 3 gated road crossings, 2 railroad gates, approximately 35 utility relocations, 145 culvert valves / gates, and raising / floodproofing of a limited number of structures.
- 7.0 – 9.0 million cy of embankment material needed for levee construction.
- In excess of 1,000 acres of new right of way will need to be acquired.
- Habitat impacts will require compensation for approximately 1,090 AAHU's
- \$760M appropriation (includes real estate, design, construction, etc.)



West Shore Lake Pontchartrain





WSLP - St James Parish



General Status

- Levee construction reaches have been optimized to maximize construction access (shown on following page)
 - ▶ Currently have 13 levee contracts and 1 pump station contract
- Continue to coordinate with CPRA regarding design and construction of the west alignment and the State's Maurepas Diversion Project
- Vegetation clearing of levee alignment for field investigations complete. Contractor has demobilized off site.
- Field Investigations 100% complete.
- Detailed designs for most reaches began in January 2020.
 - ▶ WSLP 109 design task order awarded on 06 Mar 2020
 - ▶ WSLP 114 (pump station design) design contract awarded and underway
 - ▶ WSLP 105/108 design contract awarded and underway
 - ▶ **WSLP 102/106 design task order scheduled to be awarded end of June**
- Real Estate efforts on-going.
- Pushing to begin constructing access roads and sand base in 2020. Scheduled to award first levee construction late 2020.
- Project Website continually updated/improved
 - ▶ www.mvn.usace.army.mil/About/Projects/West-Shore-Lake-Pontchartrain/
 - ▶ Google "West Shore Lake Pontchartrain" ₆

Levee Borrow Requirements

- Currently estimating a need of about 7.0M – 9.0M cubic yards of levee material for construction
 - ▶ Will cause a significant increase in truck traffic in St. John during construction
- Bonnet Carre' Spillway (BCS)
 - ▶ BCS currently has 3.5M CY readily available
 - ▶ Access issues due to high stages on Mississippi River
- Will continue to pursue additional Government Furnished borrow
- Previously used Contractor Furnished Borrow List not authorized to be used for the WSLP project
- Approved to use commercially available borrow sources
 - ▶ Sources Sought type solicitation issued to identify commercial borrow sources
 - ▶ Requirements to become a commercial borrow source are included in the Sources Sought solicitation
 - ▶ https://beta.sam.gov/opp/f5879b373937468f90946577861f7f8e/view?keywords=2020-WSLP&sort=-relevance&index=&is_active=true&page=1
 - ▶ www.beta.sam.gov – search “2020-WSLP”

WEST SHORE LAKE PONTCHARTRAIN

TENTATIVE *DELIVERY PLAN*

Contract ID	Description	Acquisition Strategy	Construction Complete Date	Estimated Contract Value
WSLP 101	Levee	Small Business	3Q 2023	\$25M - \$50M
WSLP 102	Levee, Floodwall, Drainage Structure(s)	Small Business	4Q 2022	\$25M - \$50M
WSLP 103	Levee, Floodwall, Flood Gate	Small Business	1Q 2023	\$15M - \$25M
WSLP 104	Levee, Floodwall, Utility Crossings	Small Business	3Q 2023	\$25M - \$50M
WSLP 105	Levee, Floodwall, Drainage Structure(s)	Small Business	2Q 2023	\$35M - \$55M
WSLP 106	Levee and Floodwall	Small Business	2Q 2023	\$15M - \$25M
WSLP 107	Levee, Floodwall, Drainage Structure(s)	Small Business	1Q 2023	\$15M - \$25M
WSLP 108	Levee	Small Business	1Q 2023	\$15M - \$25M
WSLP 109	Levee, Floodwall, Utility Crossings	Small Business	1Q 2023	\$5M - \$20M
WSLP 110	Levee	Small Business	1Q 2023	\$5M - \$20M
WSLP 111	Levee, Highway Ramp, Utility Crossings	Small Business	4Q 2022	\$20M - \$40M
WSLP 112	Levee, Rail Road Gate, Floodwall, Utility Crossings	Small Business	3Q 2023	\$5M - \$20M
WSLP 113	Levee, Floodwall, Rail Road Gate	Small Business	2Q 2023	\$5M - \$20M
WSLP 114	Pump Stations	Unrestricted/Best Value	3Q 2023	\$150M - \$250M

Note: Project requirements and schedule are subject to change as designs are refined and impacts identified.

WEST SHORE LAKE PONTCHARTRAIN MISCELLANEOUS CONTRACTS

- Currently Plan to issue several smaller contracts for various pre-construction efforts
 - ▶ Stock pile contracts
 - Stockpile Contract #1 – Solicitation on hold
 - Stockpile Contract #2 – awarded on 20 Dec 2019, NTP issued 02 Jan 2020, **currently on hold due to spillway being flooded, river stages going down and may be able to begin work sometime in July**
 - Sand Stockpile Contract – P&S being developed
 - ▶ **Possible** sand base placement and/or Access Road contract(s)
 - ▶ **Additional vegetation clearing contract(s) unlikely**
- May issue separate contracts or combine the above efforts

Environmental Clearances

- Additional environmental clearances are required before construction can begin due to shift in portions of the levee alignment
- Supplemental Environmental Assessment for Construction is underway
 - ▶ Updating the project description
 - ▶ Updating project impacts
 - Direct
 - Indirect
- Public review **ended on 23 Apr 20**
 - ▶ **Comments being compiled and responses prepared**
- Environmental clearances scheduled to be complete o/a **30 Jun 20**

Real Estate/Right-of-Entry

- All ROE obtained for field investigations
- Right-of-Way for Construction Activities
 - ▶ PLD and CPRA have begun title research for the currently identified properties
- All ROW requests for construction of the entire project scheduled to be provided to NFS by end of May

Vegetation Clearing and Field Investigation Contracts

- Vegetation Clearing Contracts (Field Investigations)
 - ▶ Awarded the first vegetation clearing contract on 15 May 19
 - Awarded to Quality First Marine
 - Award amount = \$2,478,285.67
 - ▶ Awarded the second vegetation clearing contract on 12 Jul 19
 - Awarded to Quality First Marine
 - Award amount = \$2,594,932.28
 - ▶ All work complete

- Boring Task Order Awarded on 18 Jul 19
 - ▶ All field investigations complete
 - ▶ All testing of the boring data scheduled to be complete by mid-March

USACE Pump Station and Drainage Structure Recommendations

- Current Recommendations
 - ▶ Pump Stations
 - Hope Canal - 800 cfs
 - Reserve Canal - 2,000 cfs
 - I-55 - 2,000 cfs
 - Prescott Canal - 800 cfs
 - ▶ Drainage Structures
 - 25 total openings in 8 drainage structures
 - Increase of 13 openings
 - ▶ Interior Drainage Canal
 - 100 ft top width; 30 ft bottom width; 8 ft deep
 - ▶ Scheduling a meeting with St. John Parish to discuss drainage patterns
- Met with St. Charles Parish drainage engineer to address some concerns with the pump station locations prior to finalizing path forward – Meeting with Parish President on same issue
- VE Study conducted to investigate options for cost savings
 - ▶ Draft report to be submitted in approximately 2-weeks

St. James Parish General Status

- Currently authorized project consists of ring levees, flap valves on the culverts under Hwy 3125, flood proofing of a small number of structures
- Investigating an additional alternative to expand the ring levees and to eliminate the flap valves
 - ▶ Developing a cost for this alternative
 - ▶ Developing a cost per linear foot of levee
- Risk analysis of the flap valves scheduled to begin in early March 2020 – **delayed due to COVID-19**
- Value Engineering Study scheduled **conducted week of 04 May 2020**
 - ▶ **Draft distributed 23 June 2020**
- Based on the outcome of these two efforts, may be able to recommend implementation of an alternative to the flap valves
- Right-of-Entry on-going



WSLP - St James Parish



Real Estate/Right-of-Entry

- All ROE obtained for field investigations
 - ▶ ROE request is being revised to account for the larger ring levee alternative
- Will notify residents prior to beginning any field investigations
- Field investigations may require entry into homeowner's back yards
- Updated ROE sent to NFS
 - ▶ USACE has asked the NFS to hold the ROE until the VE Study draft report is received

