

WEST SHORE LAKE PONTCHARTRAIN STAKEHOLDER UPDATE

May 2023

Patrick Baudoin, P.G.
Project Manager
New Orleans District
U.S. Army Corps of Engineers



US Army Corps
of Engineers®



03.23.2023 12:53 PM
WSLP Pile Load Test
USACE





AGENDA

- Disaster Relief Supplemental Appropriations Act, 2022 funding
- Design Status
- Construction Status/Schedule

<https://www.mvn.usace.army.mil/About/Projects/West-Shore-Lake-Pontchartrain/>



U.S. ARMY

DISASTER SUPPLEMENTAL FUNDS



- \$3M provided for a WSLP Reevaluation Report (GRR) focused on resiliency
- Considering opportunities for resiliency for entire project
- Feasibility Cost Share Agreement (FCSA) executed 27 Feb 23
- Pending completion of a report that finds a recommended plan that is economically justified and environmentally acceptable up to \$450M in additional construction funds have been set aside for use
- Potential to look at additional alternatives in St. James Parish that are economically justified
- **WSLP Resiliency Charrette occurred 26 April 23**

TENTATIVE RESILIENCY STUDY SCHEDULE

DATE	MILESTONE
February 27, 2023	Feasibility Cost Share Agreement (FCSA)
June 27, 2023	Alternatives Milestone Meeting (AMM)-120 days
February 2, 2024	Tentatively Selected Plan (TSP)
April 2, 2024	Release Draft Report and Draft EIS/EA for Concurrent Review
August 29, 2024	Agency Decision Milestone (ADM)
February 2, 2026	Chief's Report

PRE-AWARD STATUS UPDATES

- WSLP-106 I-10 Westernmost Crossing was **advertised on 16 May 23**
- WSLP-102 I-10 Easternmost Crossing P&S advertisement scheduled in mid-June
- WSLP-108 Levee and Mississippi Bayou Drainage Structures advertisement scheduled in mid-July
 - Port of South Louisiana Airport Runway Extension Additional Work Approval Package has been completed, and USACE has received initial funding from CPRA/PLD/Port of South Louisiana and initiated design and environmental compliance efforts
- USACE has completed surveys and borings in St. James Parish and is conducting **geotechnical analysis/design**
- **Environmental Assessment expected to be released for public review on 2 June for a 30-day review.**
- Meeting between Colonel Jones and President Hotard on drainage modelling occurred 12 April 23; **follow on meeting planned early/mid-June.**

CONSTRUCTION STATUS

- WSLP-110 contract was awarded on 21 Dec 22
 - Clearing and grubbing/burning still underway
- WSLP-107 contract was awarded on 15 Mar 23
 - Culvert pipe to be delivered this week; to start clearing and grubbing soon
- WSLP-101a contract was **awarded on 28 April 23**
 - ▶ **Anticipated Preconstruction Meeting – 31 May 23**
 - ▶ **Anticipated Mobilization – 26 June 23**
- Stockpile Contracts
 - ▶ Clay 1 – 350k/1000k cubic yards (**Averaging 2000 cy/day**)
 - ▶ Clay 2 – 500k/500k cubic yards – Completed
 - ▶ Sand – 600k/600k cubic yards – Completed
- **Pile Load Test Contract**
 - ▶ Prescott Site: All test piles have been driven
 - ▶ **I-55 Site: Pile driving underway**
 - ▶ **Reserve Relief Site: Piles have been delivered and are being spliced.**

CONSTRUCTION STATUS: COMPLETED

- WSLP-101 Test Section Contract – Completed June 2022
- Sand Placement 1 and 2 – Completed in December 22/January 2023
- Access Road Contract – Substantially Completed early March 2023

CONSTRUCTION PHOTOS



Previously cleared levee alignment



Clay Stockpile 1 on access Road J



SP2 Sand base placed along levee alignment



SP2 Sand base placed along levee alignment



US Army Corps
of Engineers®

U.S. ARMY

CONSTRUCTION PHOTOS



SP1 at extent of placement



SP2 at extent of placement



U.S. ARMY

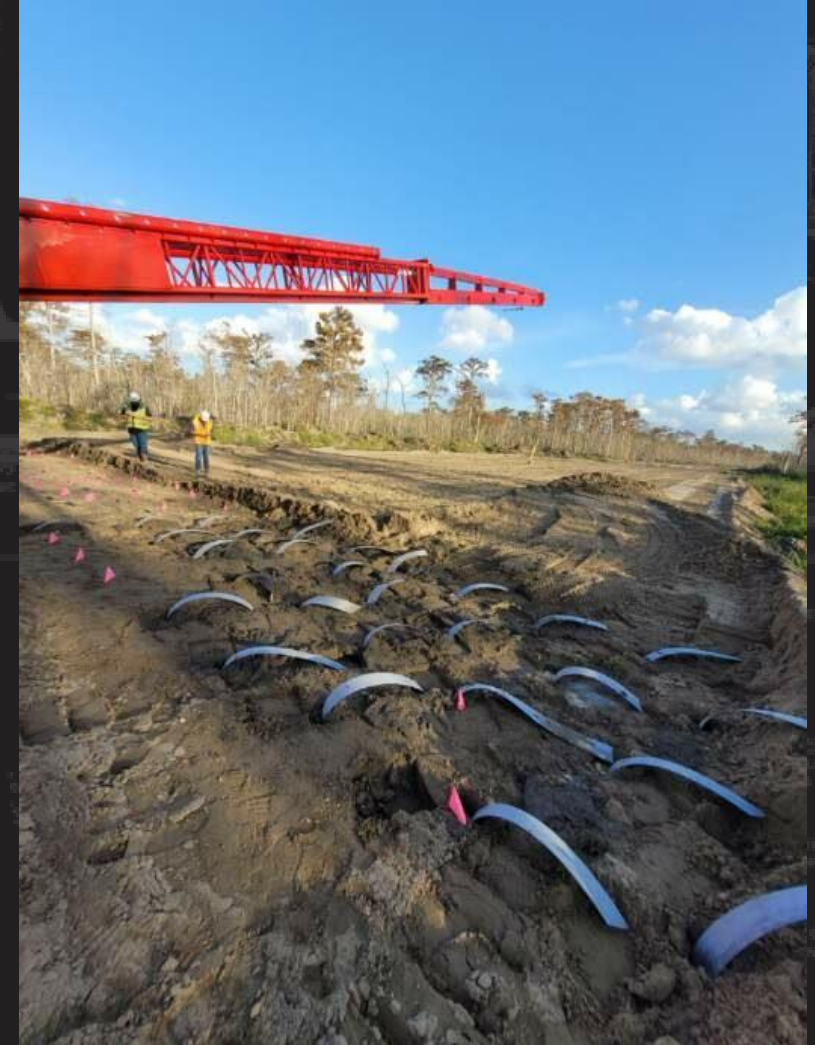


US Army Corps
of Engineers®

CONSTRUCTION PHOTOS



Land bridge/Access Road D



Sand Placement 2: Wick Drain Installation



US Army Corps
of Engineers®

U.S. ARMY

CONSTRUCTION PHOTOS



Pile load testing location – Prescott (Access Road J)

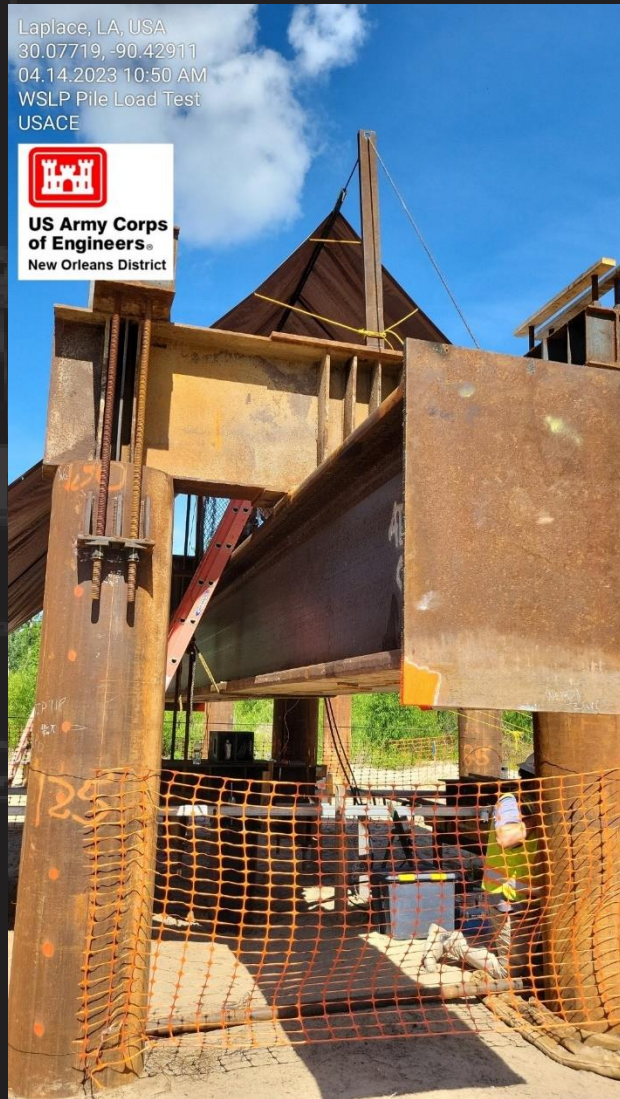


US Army Corps
of Engineers®

CONSTRUCTION PHOTOS



Prescott
(Access Road J)



U.S. ARMY



US Army Corps of Engineers®

CONSTRUCTION PHOTOS

03/23/2023 12:53 PM
WSLP Pile Load Test
USACE



I-55 (Access road P)

I-55, Laplace, LA 70068 USA
30 10583, -90 44404
04/19/2023 09:35 AM
WSLP Pile Load Test
USACE



I-55 (Access road P)

03/07/2023 10:59 AM
WSLP Pile Load Test
USACE



Reserve Relief test pad



U.S. ARMY



US Army Corps
of Engineers®



U.S. ARMY

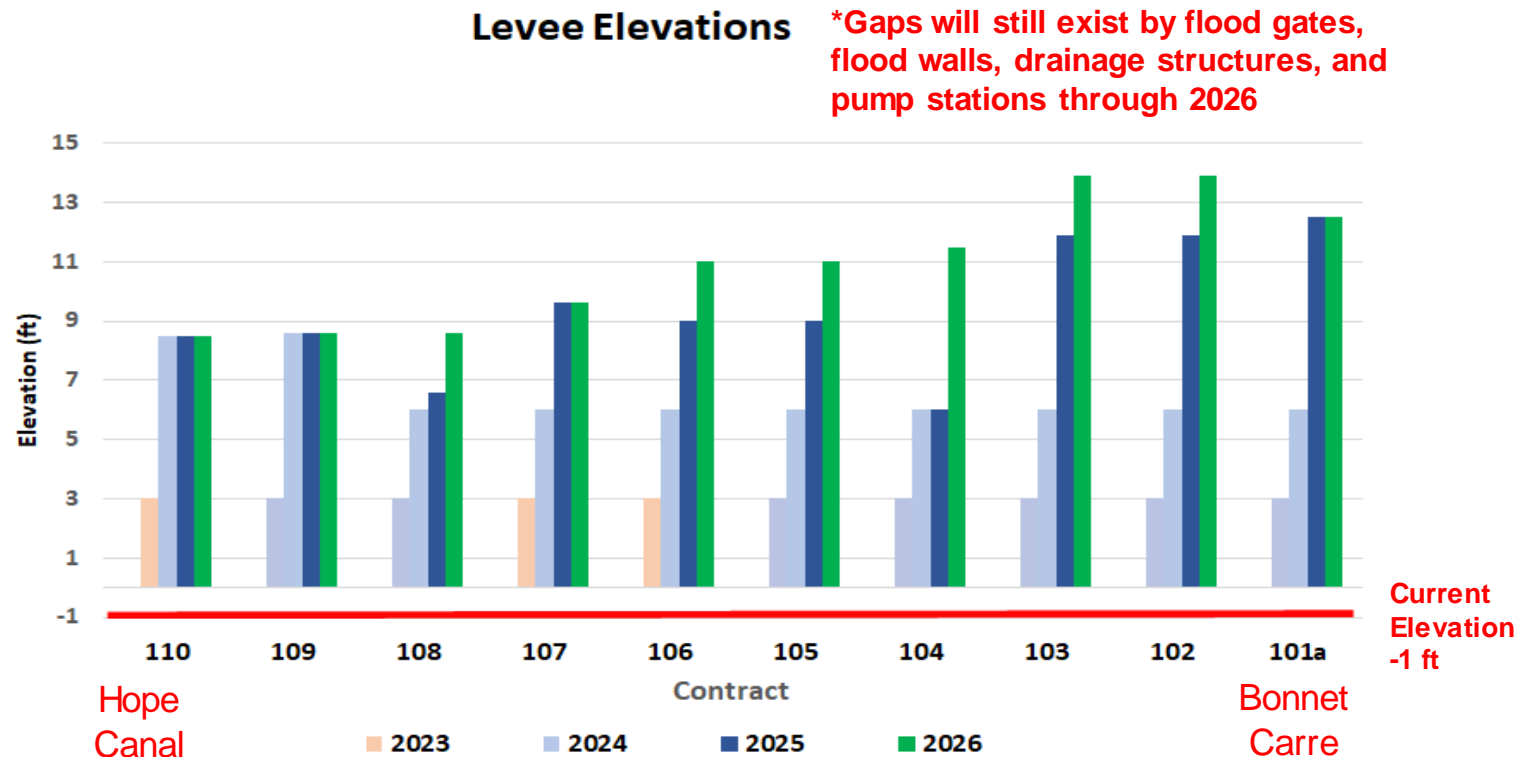


US Army Corps
of Engineers®

PRELIMINARY LEVEE CONSTRUCTION SCHEDULE

14

- Existing elevation approx. -1 feet
- 2023 and 2024: Construct 3-foot sand base and begin levee construction
- 2024: Levee built to heights around +6 feet
- 2025: Levee built to heights ranging +6.6 to +12.5 feet
- 2026: Levee built to full heights



WEST SHORE LAKE PONTCHARTRAIN TENTATIVE DELIVERY PLAN

Contract ID	Description	Award
WSLP 102	Levee (approx. 1.0 mi.), Floodwall (approx. 500 ft), Drainage Structure	3Q 2023
WSLP 103	Levee (approx. 1.0 mi.), Floodwall (approx. 500 ft)	4Q 2023
WSLP 104	Levee (approx. 2.5 mi.), Floodwall (approx. 500 ft), Utility Crossings	3Q 2023
WSLP 105	Levee (approx. 3.0 mi.), Floodwall (approx. 500 ft), Drainage Structure	4Q 2023
WSLP 106	Levee (approx. 0.75 mi.), Floodwall (approx. 500 ft),	3Q 2023
WSLP 108	Levee (approx. 1.3 mi.), Floodwall (approx. 500 ft), Drainage structure(s)	3Q 2023

Note: Project requirements and completion dates may be subject to change as designs are refined and impacts quantified.

Award dates highlighted in green have been actualized.

***Designed and constructed by CPRA



U.S. ARMY



US Army Corps
of Engineers®

WEST SHORE LAKE PONTCHARTRAIN TENTATIVE DELIVERY PLAN

16

Contract ID	Description	Award
WSLP 109	Levee (approx. 1.0 mi), (approx. 500 ft), Utility Crossings	4Q 2023
WSLP 111**	Levee (approx. 0.5 mi), Highway Ramp, Utility Crossings	3Q 2023
WSLP 112**	Levee (approx. 1.0 mi), Rail Road Gate, Floodwall (approx. 500 ft), Utility Crossings	3Q 2023
WSLP 113**	Levee (approx. 0.5 mi), Floodwall (approx. 500 ft), Rail Road Gate	3Q 2023
WSLP 114	Pump Stations (2 – 2,000 cfs)	4Q 2023
WSLP 114a	Hope and Prescott Drainage Structures	3Q 2023

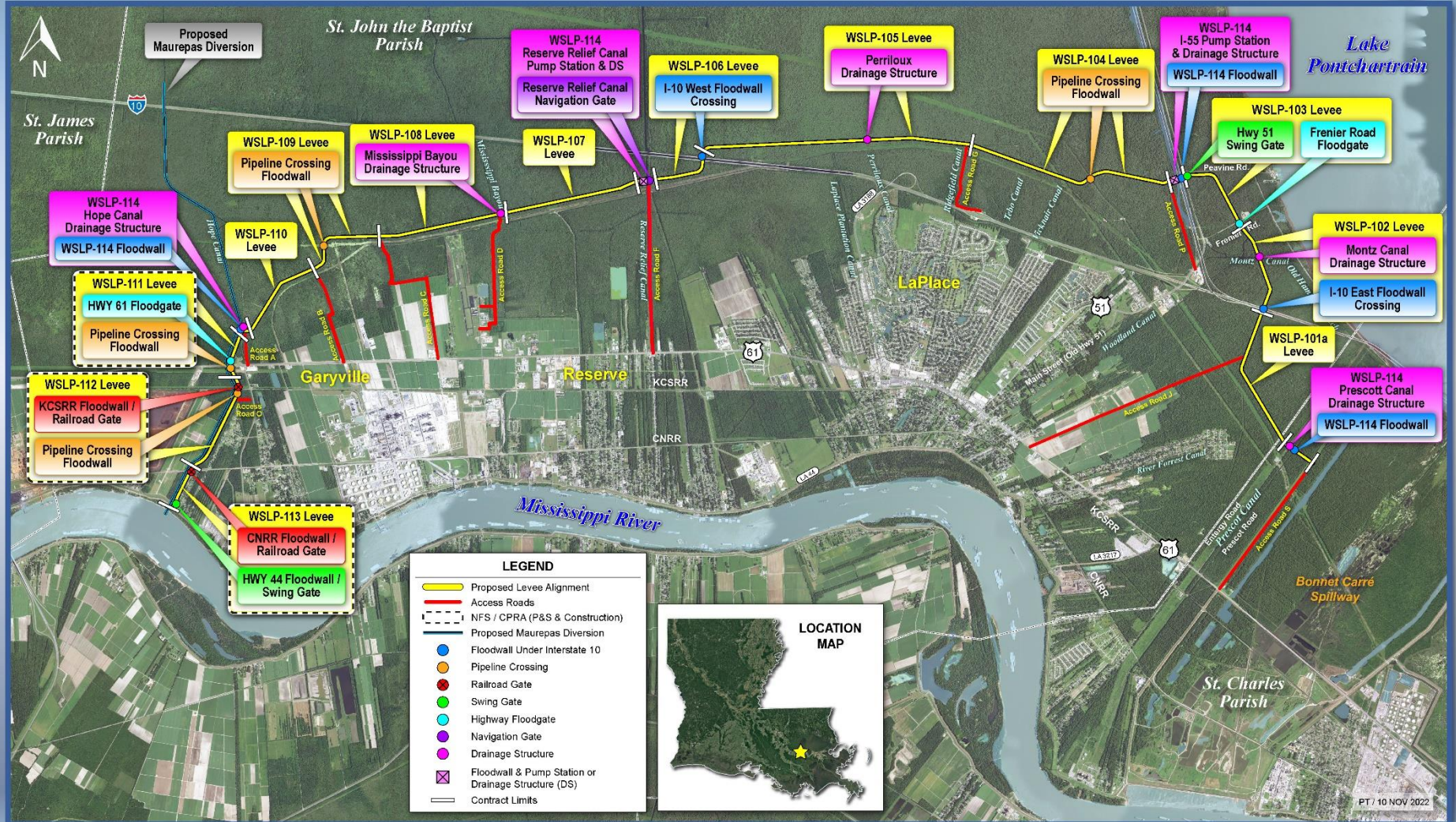
Note: Project requirements and completion dates may be subject to change as designs are refined and impacts quantified.

Award dates highlighted in green have been actualized.

***Designed and constructed by CPRA



West Shore Lake Pontchartrain



US Army Corps
of Engineers®

U.S. ARMY



WSLP - St James Parish



US Army Corps
of Engineers®

U.S. ARMY

Questions

Patrick.Baudoin@usace.army.mil



US Army Corps
of Engineers®

U.S. ARMY