



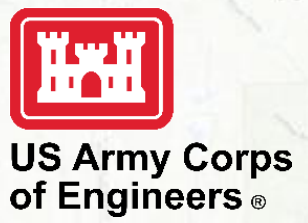
US Army Corps
of Engineers®

THANK YOU FOR JOINING US

Our broadcast will begin momentarily



St. Tammany Parish, Louisiana Feasibility Study Scoping Meeting





MEETING PURPOSE

Inform the Public and Stakeholders

- Provide background on USACE Study**
- Ongoing collaboration efforts**
- Alternatives identified to date**

Solicit Input from the public

- Issues and Concerns**
- Inform development of alternatives**
- Asking for potential solutions and issues we may have missed**

The USACE encourages full public participation to promote open communication on the issues surrounding the studies.



STUDY AUTHORITY

The St. Tammany Parish study was authorized by the Water Infrastructure Improvements Act for the Nation Act (WINN Act) of 2016 for flood risk reduction and ecosystem restoration*.

Full Federal funding was provided through the BBA of 2018 (Public Law 115-123), Division B, Subdivision 1, Title IV.

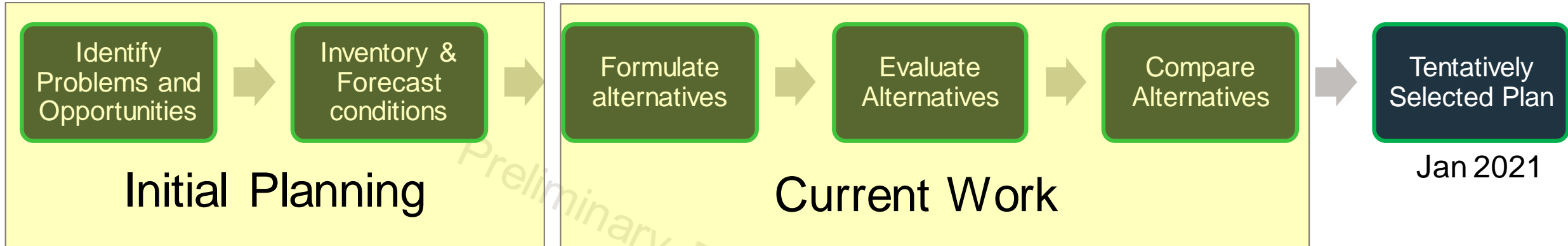
The study will be accomplished within 3 years and 3 million dollars, in accordance with the Specific Measureable Attainable Risk Informed Timely (SMART) Planning principles described in the 8 February 2012 Memorandum signed by the DCG-CEO.

Bipartisan Budget Act (BBA) of 2018

- (Public Law 115-123), Division B, Subdivision 1, H. R. 1892—13, TITLE IV, CORPS OF ENGINEERS—CIVIL, DEPARTMENT OF THE ARMY, INVESTIGATIONS

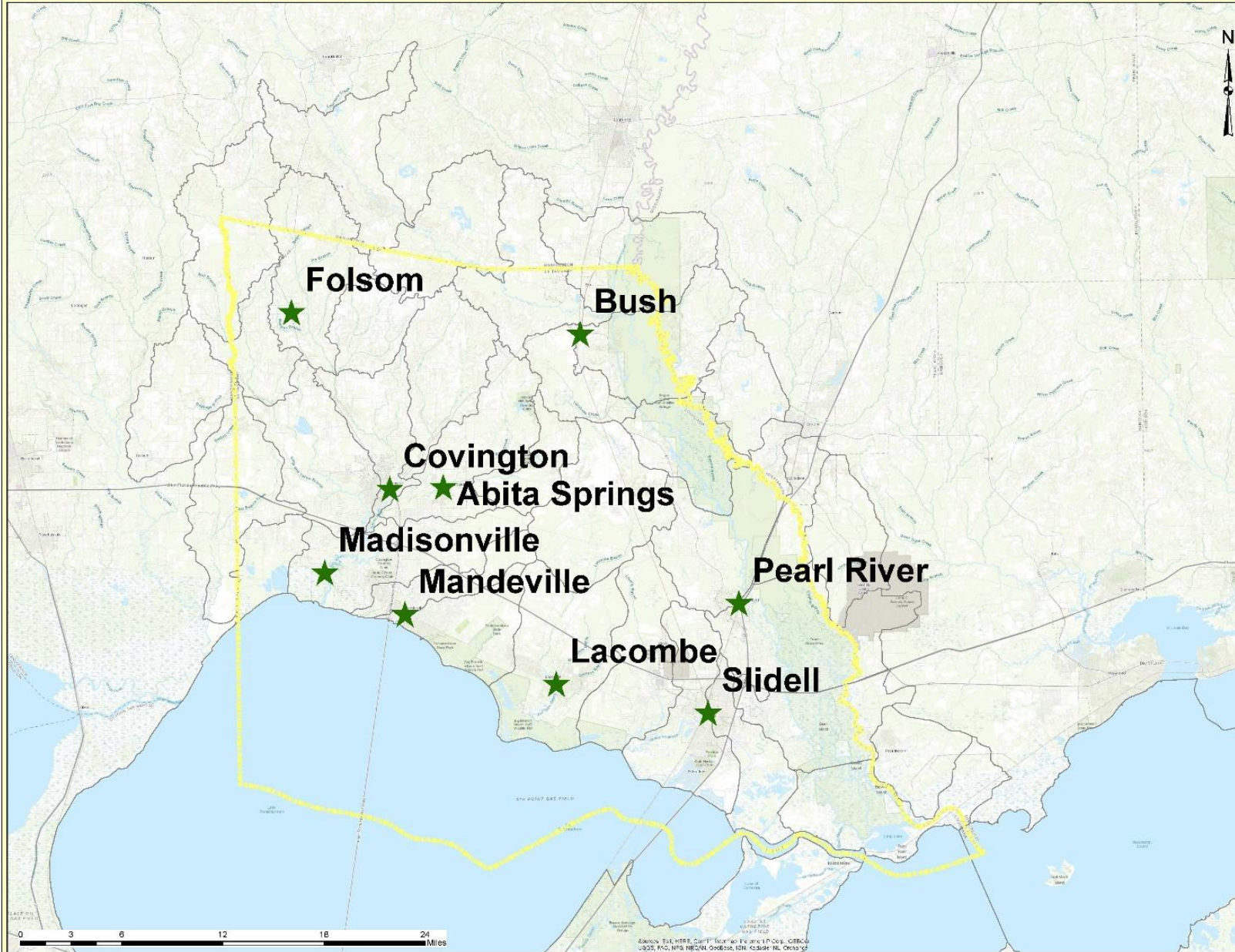


PLANNING PROCESS



- ✓ Define the problem to be addressed
- ✓ Inventory available data and information
- ✓ Forecast of future conditions
- ✓ Identification of key areas of uncertainty that will impact the study and the project formulation
- ✓ Identification of the decision criteria that will be used to formulate, compare and select alternatives
- ✓ Initial formulation of alternative plans based on critical thinking and professional expertise

St. Tammany Parish, Louisiana Feasibility Study



U.S. Army Corps of Engineers
New Orleans District
Engineering Office

Legend

- ★ Cities
- ▭ WBDHU12
- ▭ Study Area

LOCATION MAP



Date: 5/10/2020

EQB-10-006-000



WITHOUT PROJECT CONDITION

Most likely condition of the resources and human environment if no additional actions are taken as a result of this study

Increased flood risk

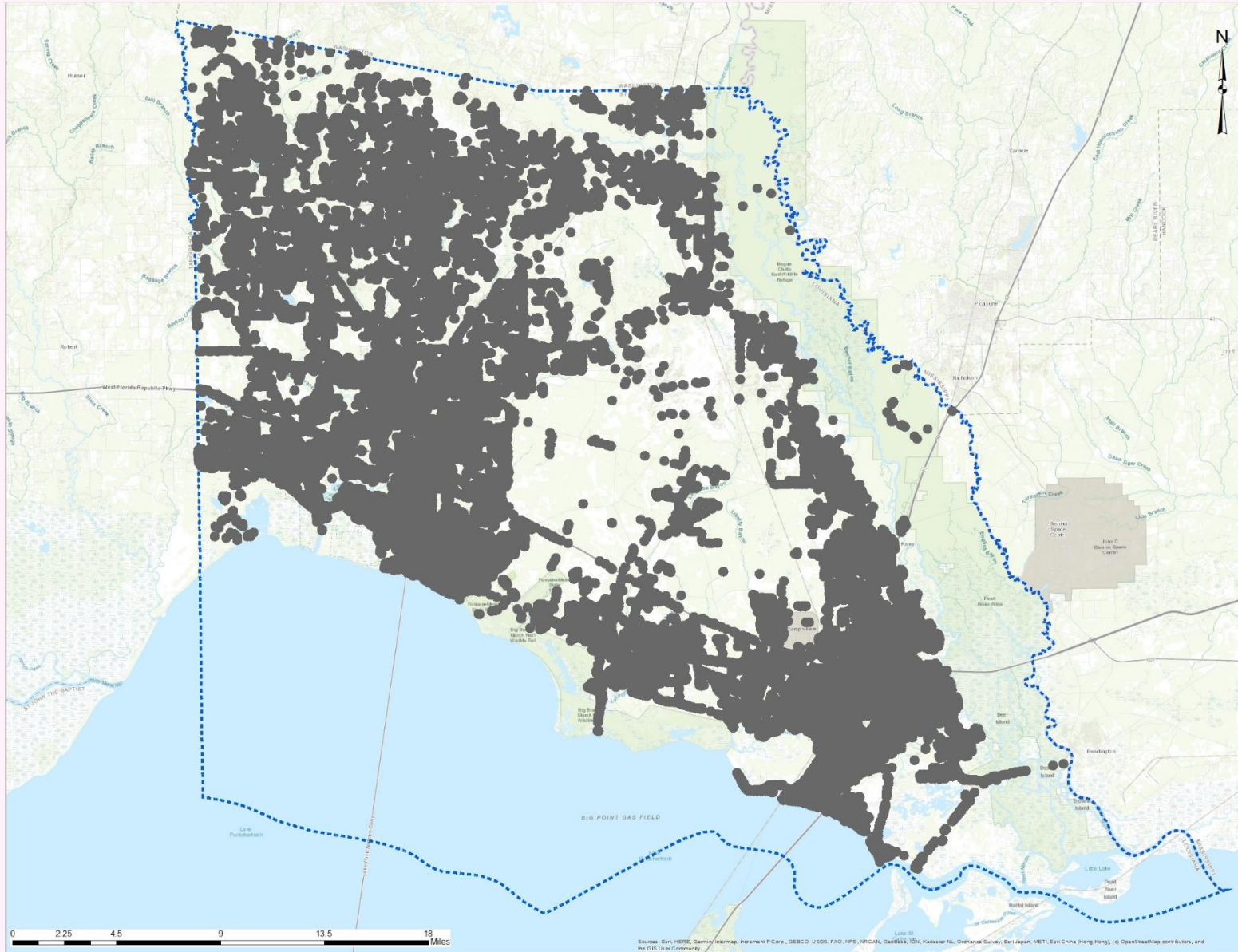
- Continued sea level rise
- Continued subsidence
- Continued rainfall and riverine bank overtopping

Increased storm damages

- Frequency
- Intensity

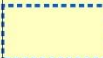

Current Construction Projects

St. Tammany Parish, Louisiana Structure Inventory

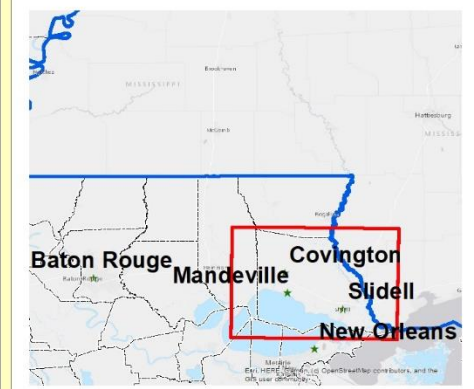


U.S. Army Corps of Engineers
 New Orleans District
 Engineering Office

Legend

-  Study Area
-  Structure Inventory

LOCATION MAP

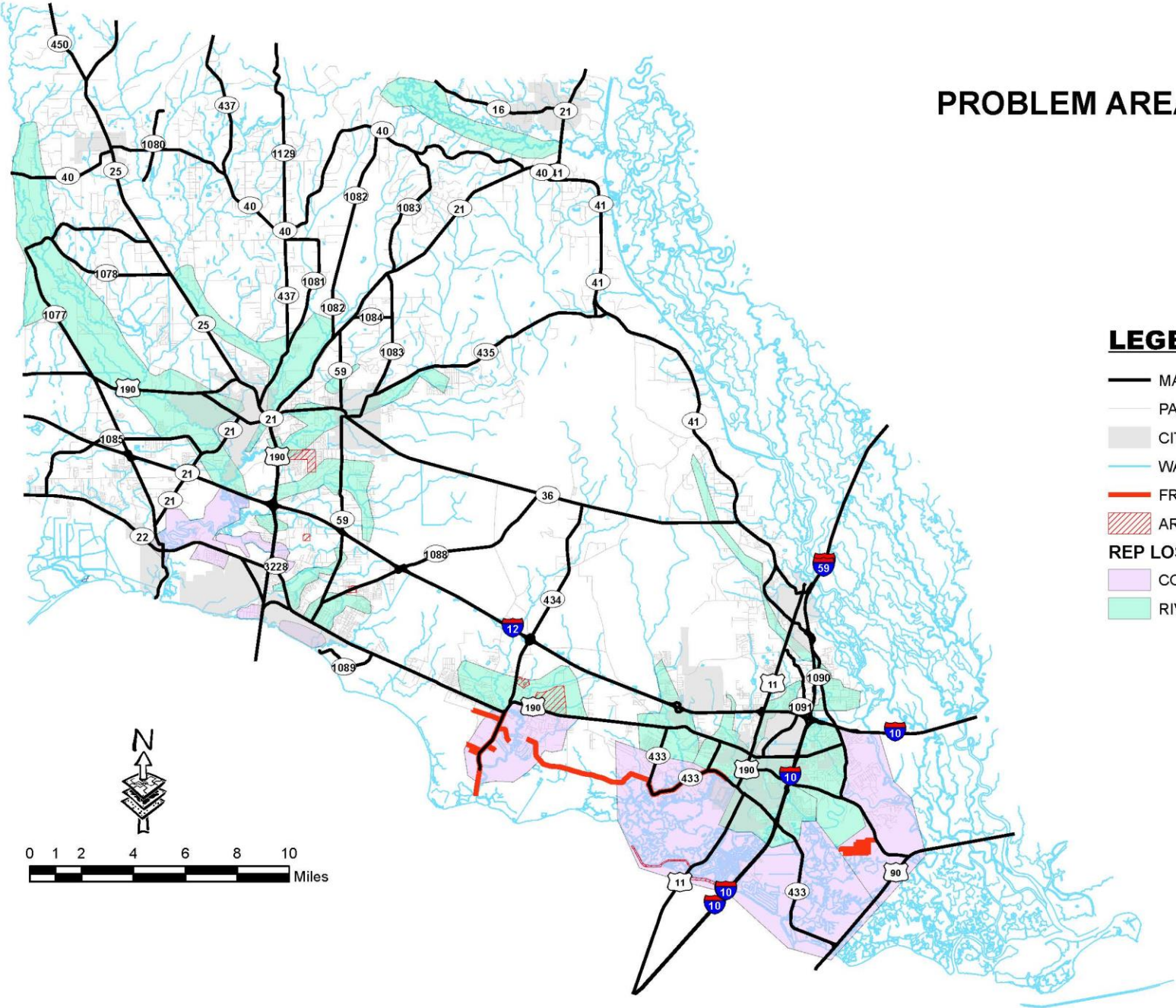


Date: 2-5-2020 EGIS-18-035-000

Approximately **100,000** structures reside within the study area, 90% are residential and 10% are commercial.

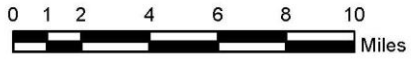
PROBLEM AREAS FOR DRAINAGE

Map by D. O'Dell
January 28, 2020



LEGEND

- MAJOR ROADS
- PARISH MAINTAINED ROADS
- CITIES
- WATERWAYS
- FREQUENTLY FLOODED ROADS
- AREAS OF SPECIAL CONCERN
- REP LOSS AREAS
 - COASTAL
 - RIVERINE



INITIAL ARRAY OF ALTERNATIVES



		detention ponds	channel / restriction improve	diversion channels	pump stations	levee, ring levee, floodwall, seawall	flood gates	shoreline protection breakwaters	marsh creation
	Alternative Name	FRM	FRM/CSRM	FRM	FRM/CSRM	FRM/CSRM	CSRM	CSRM	CSRM
1	No Action								
2	Non- Structural								
3	Lake Pontchartrain Surge Reduction						✓	✓	✓
4	Lacombe	✓			✓	✓		✓	✓
5	Bayou Liberty/Bayou Vincent/Bayou Bonfouca	✓	✓			✓		✓	✓
6	South Slidell Storm Surge		✓		✓	✓		✓	✓
7	Eastern Slidell	✓	✓	✓		✓			
8	Upper Tchefuncte/Covington	✓	✓	✓					
9	Mandeville Lakefront				✓	✓	✓	✓	✓
10	Bayou Chinchuba	✓	✓						
11	Abita Channel Improvements	✓		✓					
12	Bogue Chitto Ring Levee					✓			
13	Lower Tchefuncte Shoreline	✓	✓					✓	✓

SCREENING CRITERIA

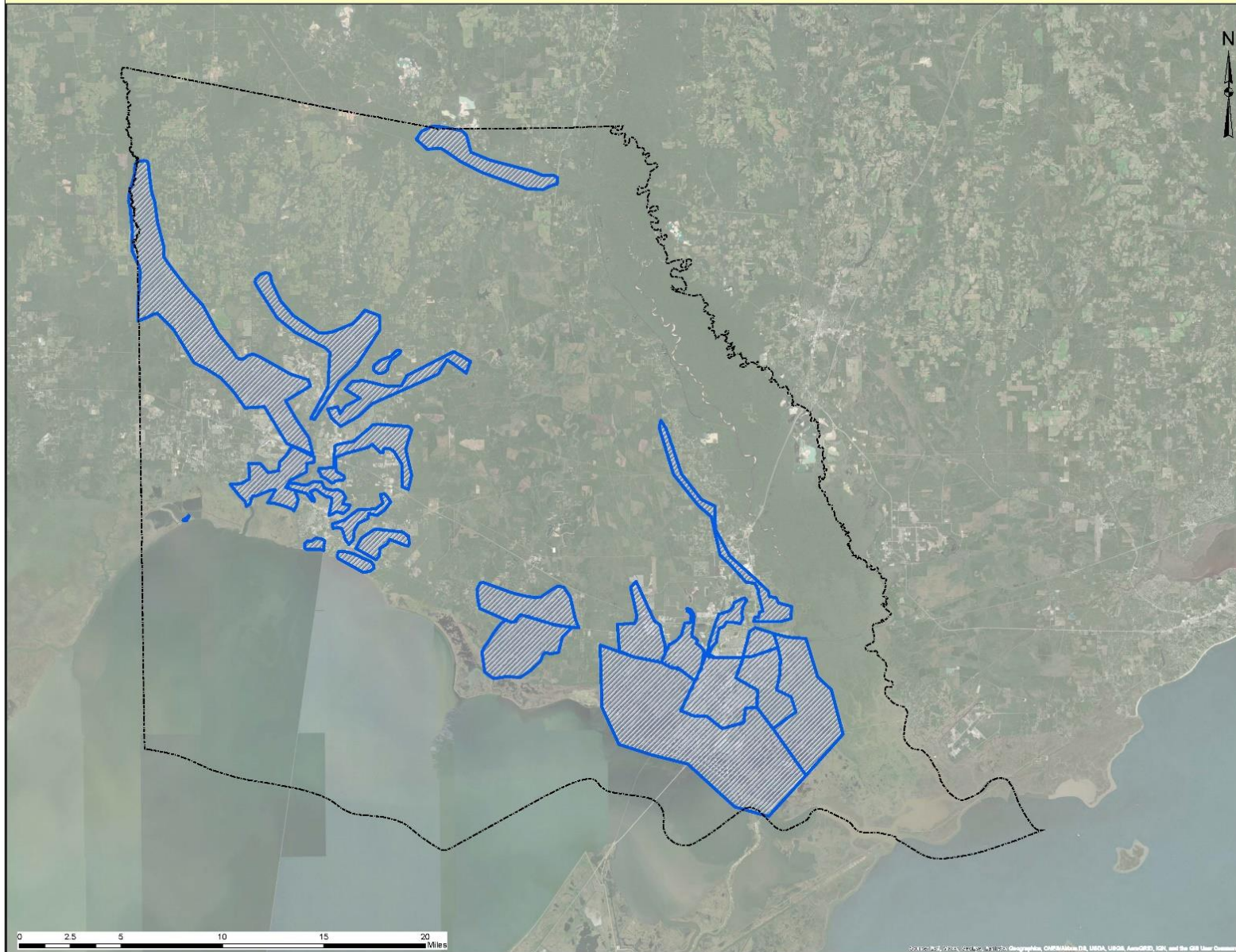
- Meets Project objectives
- Meets USACE definition for flood risk management vs local storm drainage- ER-1165-2-21 (greater than 800 cfs)
- Scale-Detention Ponds
- Reduces flood risk in a repetitive loss/problem drainage
- Potential Damages Avoided Exceed Implementation Cost
- Consistent with the St. Tammany Master Plan
- Consistent with the CPRA Master Plan
- Avoids Project constraints
 - Impacts to threatened and endangered species and their critical habitats
 - Impacts to managed habitats i.e. essential fish habitat (EFH)
 - Lands known to have Hazardous, Toxic and Radioactive Waste (HTRW) concerns
 - Impacts to established recreational areas
 - Impacts to view shed

CURRENT ARRAY OF ALTERNATIVES





		detention ponds	channel / restriction improve	diversion channels	pump stations	levee, ring levee, floodwall, seawall	flood gates
	Alternative Name	FRM	FRM/CSRM	FRM	FRM/CSRM	FRM/CSRM	CSRM
1	No Action						
2	Non- Structural						
4	Bayou Lacombe				✓	✓	✓
5	Bayou Liberty/Bayou Vincent/Bayou Bonfouca	✓	✓			✓	
6	South Slidell Storm Surge				✓	✓	
7	Eastern Slidell		✓	✓	✓	✓	✓
8	Upper Tchefuncte/Covington		✓				
9	Mandeville Lakefront				✓	✓	✓

St. Tammany Feasibility Study: Non-Structural (Alternative 2)



U.S. Army Corps of Engineers
 New Orleans District
 Engineering Office

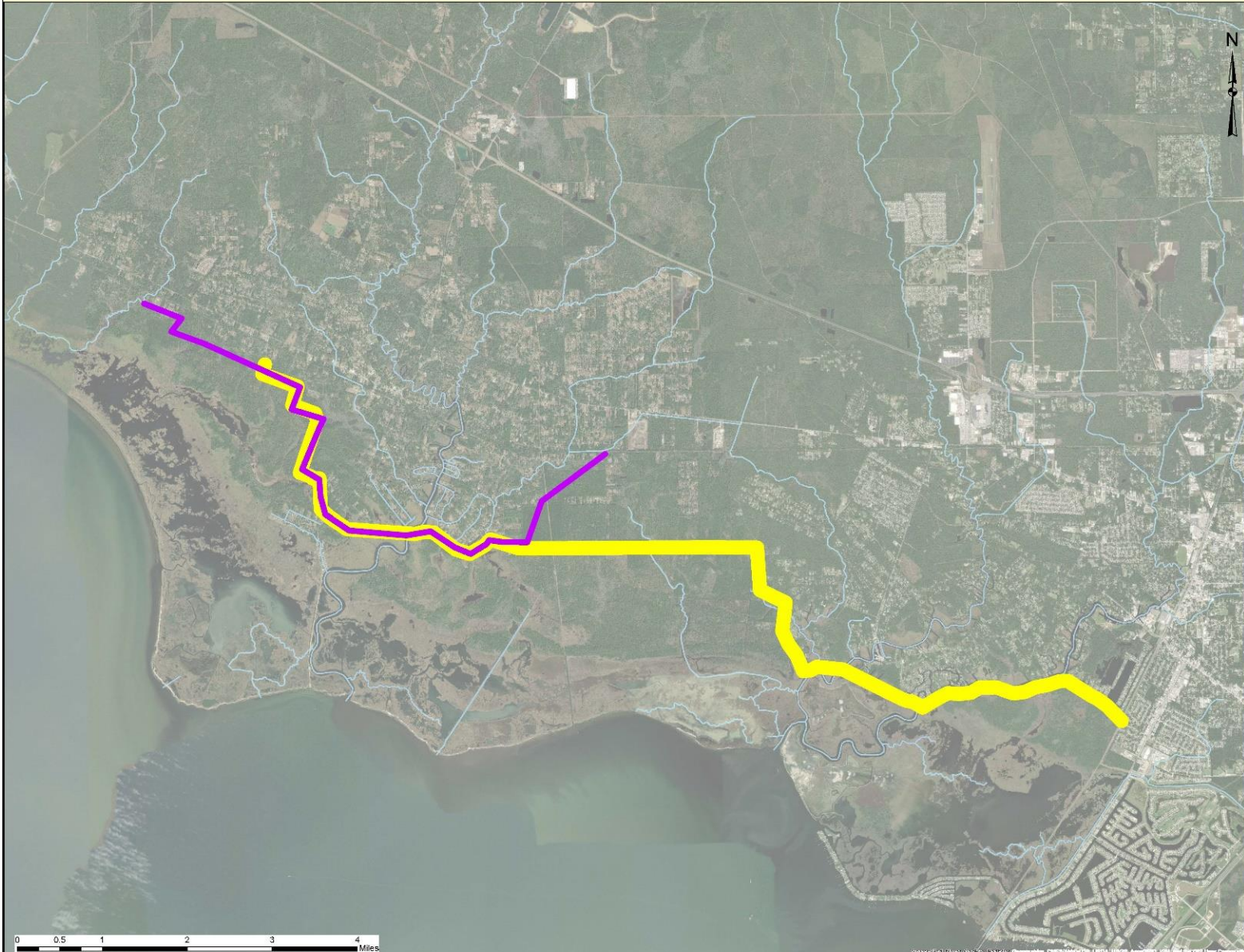

Legend

-  Study Area
-  Non-Structural

LOCATION MAP



St. Tammany Feasibility Study: Bayou Lacombe (Alternative 4)

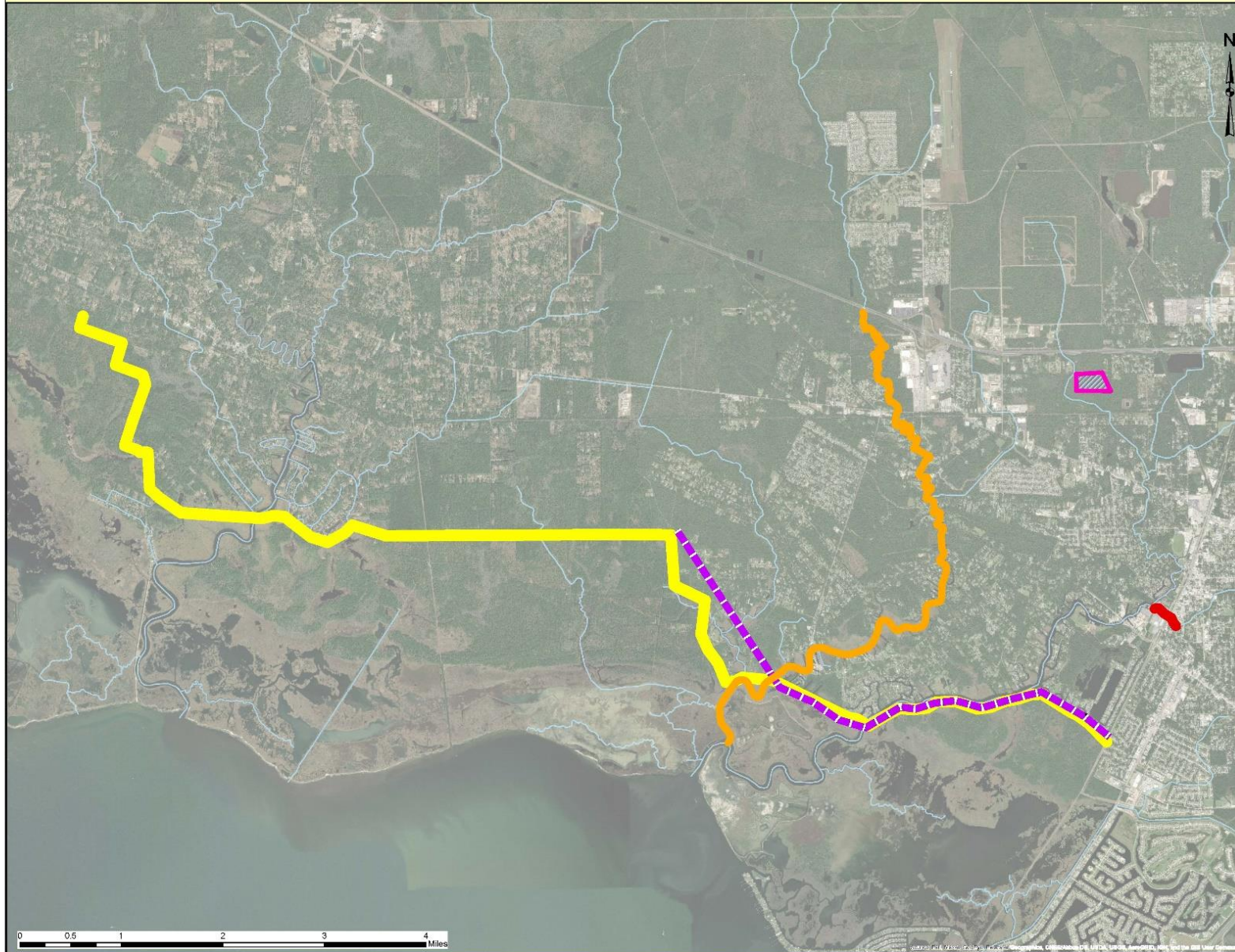
U. S. Army Corps of Engineers
 New Orleans District
 Engineering Office

Legend

- Bayou Lacombe Ring Levee
- Combined Ring Levee
- Parish Waterways
- Pump Stations



St. Tammany Feasibility Study: Bayou Liberty/ Bayou Vincent/ Bayou Bonfouca (Alternative 5)



U.S. Army Corps of Engineers
 New Orleans District
 Engineering Office

Legend

-  Bayou Bonfouca Detention Pond
-  Bayou Liberty Channel Improvements
-  West Slidell Ring Levee
-  Bayou Patassat Channel Improvements
-  Combined Ring Levee
-  Parish Waterways
-  Pump Stations

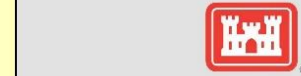
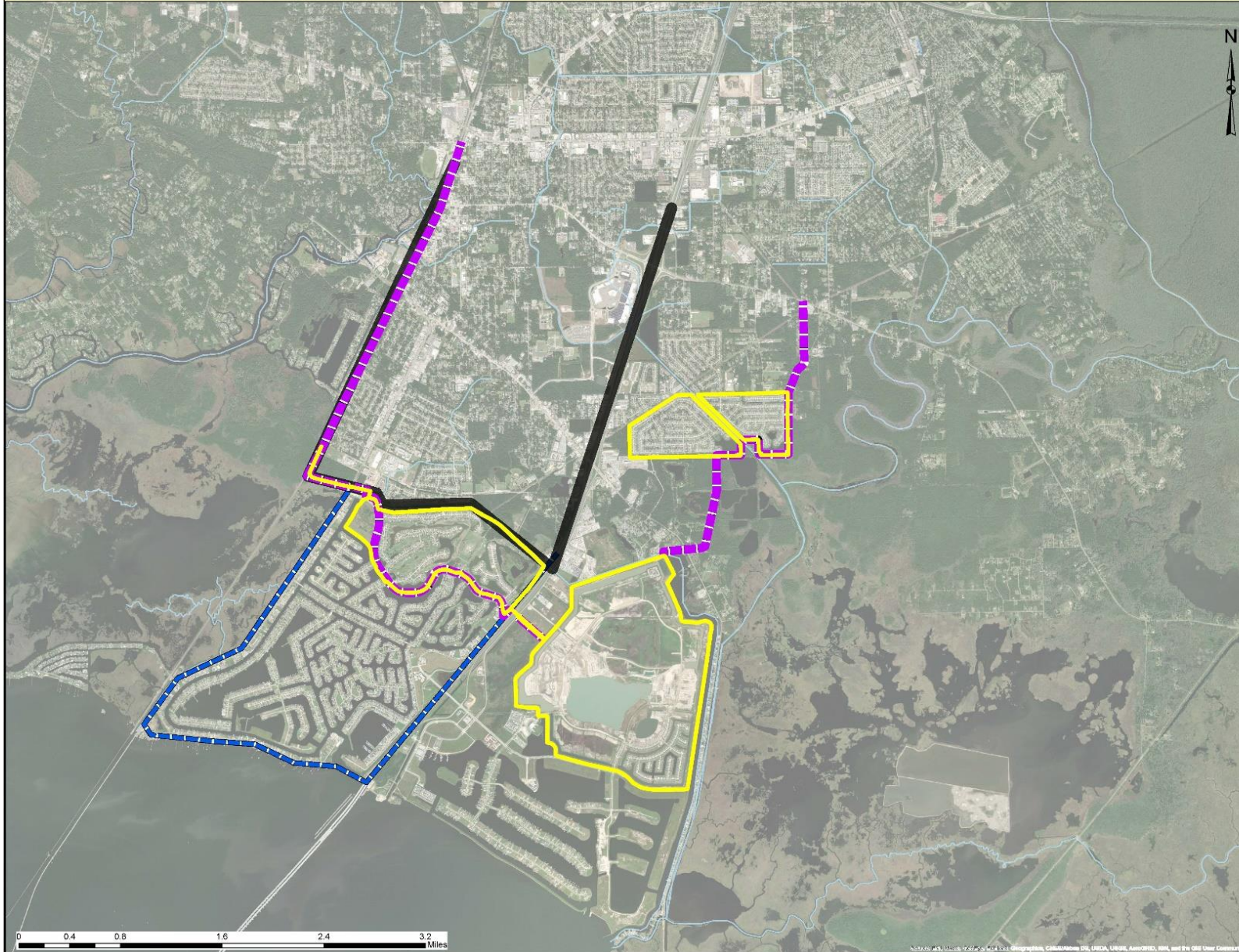
LOCATION MAP



Date: 7/12/2020




EGIS-16-035-000

St. Tammany Feasibility Study: South Slidell Storm Risk Reduction (Alternative 6)



U.S. Army Corps of Engineers
 New Orleans District
 Engineering Office

Alternatives

-  Proposed Levee Alignment
-  Eden Isle Ring Levee
-  Pump Stations

Existing Alignments

-  Slidell Levees
-  Authorized SELA Schneider Canal

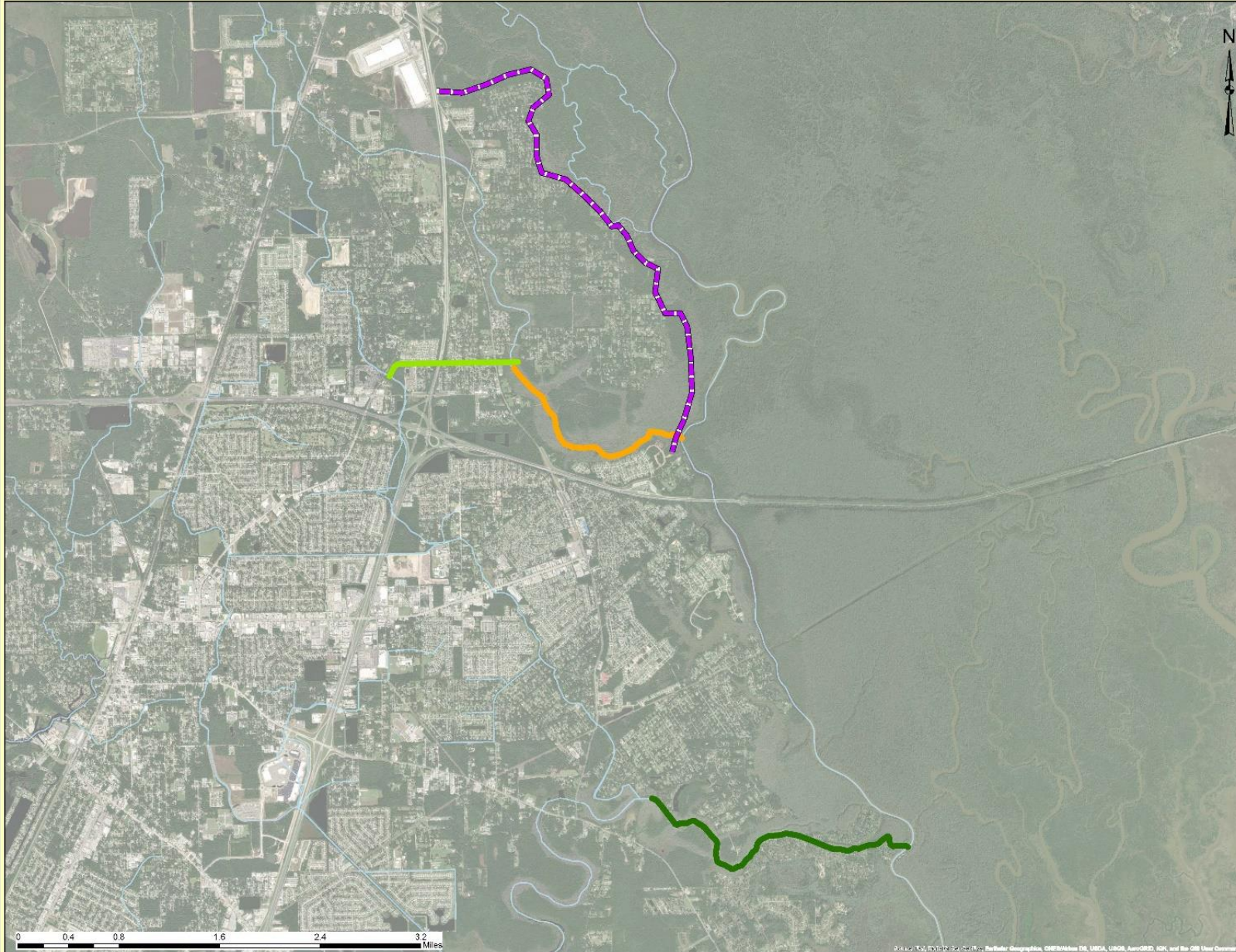
LOCATION MAP



Date: 7/1/2020

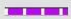



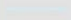
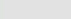
EGIS-10-035-000

St. Tammany Feasibility Study: Eastern Slidell (Alternative 7)



U.S. Army Corps of Engineers
New Orleans District
Engineering Office

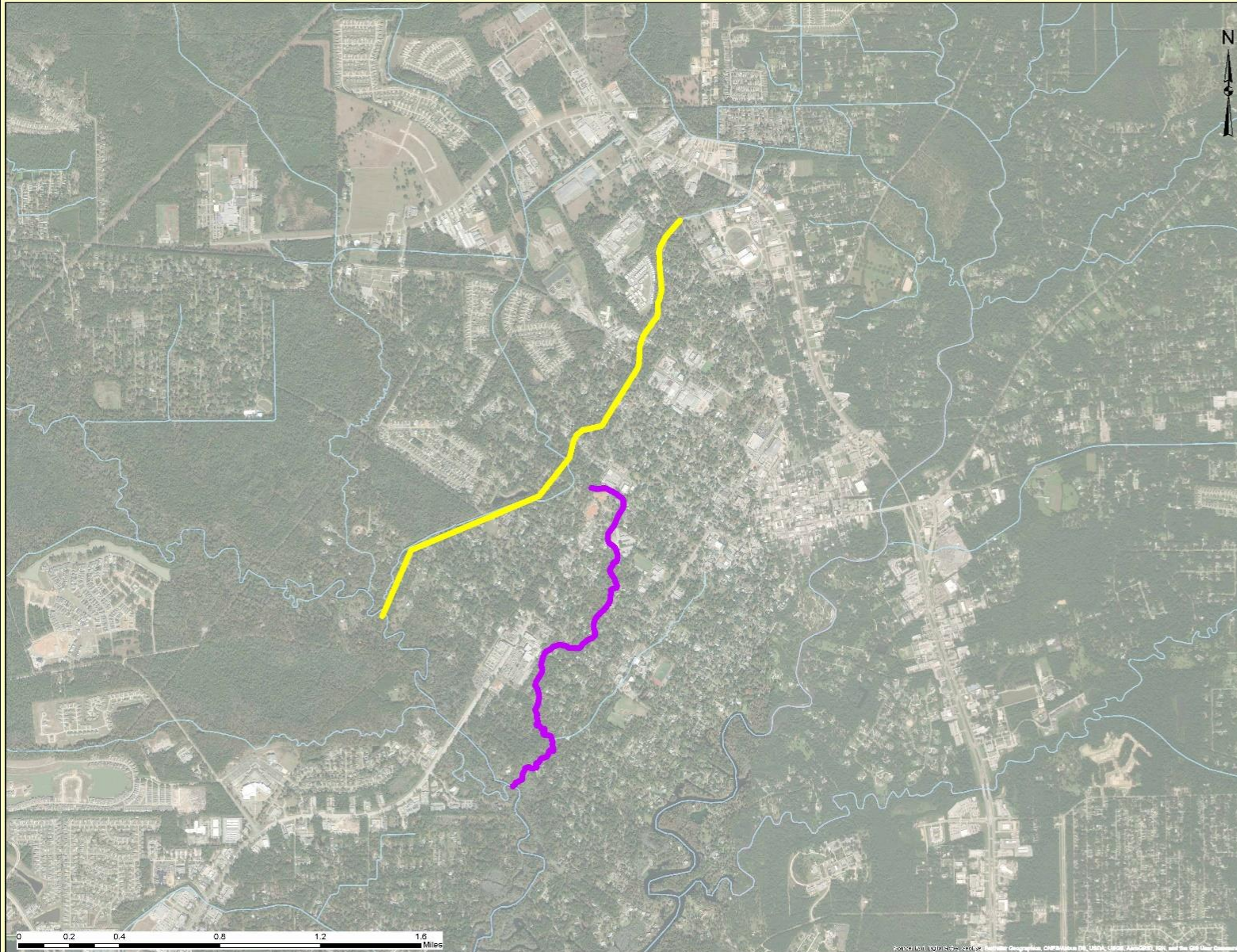
Legend

-  Pearl River Alignment- Plan A
-  Doublon Bayou Channel Improvements
-  Gum Bayou Diversion
-  Poor Boy Canal Channel Improvements
-  Parish Waterways
-  Pump Stations

LOCATION MAP



St. Tammany Feasibility Study: Upper Tchefuncte/ Covington (Alternative 8)



U.S. Army Corps of Engineers
 New Orleans District
 Engineering Office

Legend

- Mile Branch Channel Improvements
- Mile Branch Lateral A
- Parish Waterways
- Pump Stations

LOCATION MAP



Date: 8/5/2010






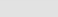
ES:BS/RS/CS/000

St. Tammany Feasibility Study: Mandeville Lakefront (Alternative 9)



U.S. Army Corps of Engineers
 New Orleans District
 Engineering Office

Legend

-  Elevate Existing Mandeville Seawall
-  Ravine Aux Coquilles East Passive Barrier
-  Ravine Aux Coquilles West Passive Barrier
-  Little Bayou Castine Passive Barrier
-  Flood Barrier
-  Pump Stations

LOCATION MAP



Date: 6/1/2023

ES&S-01-205-210

OVERVIEW OF ENVIRONMENTAL ISSUES IN THE STUDY AREA

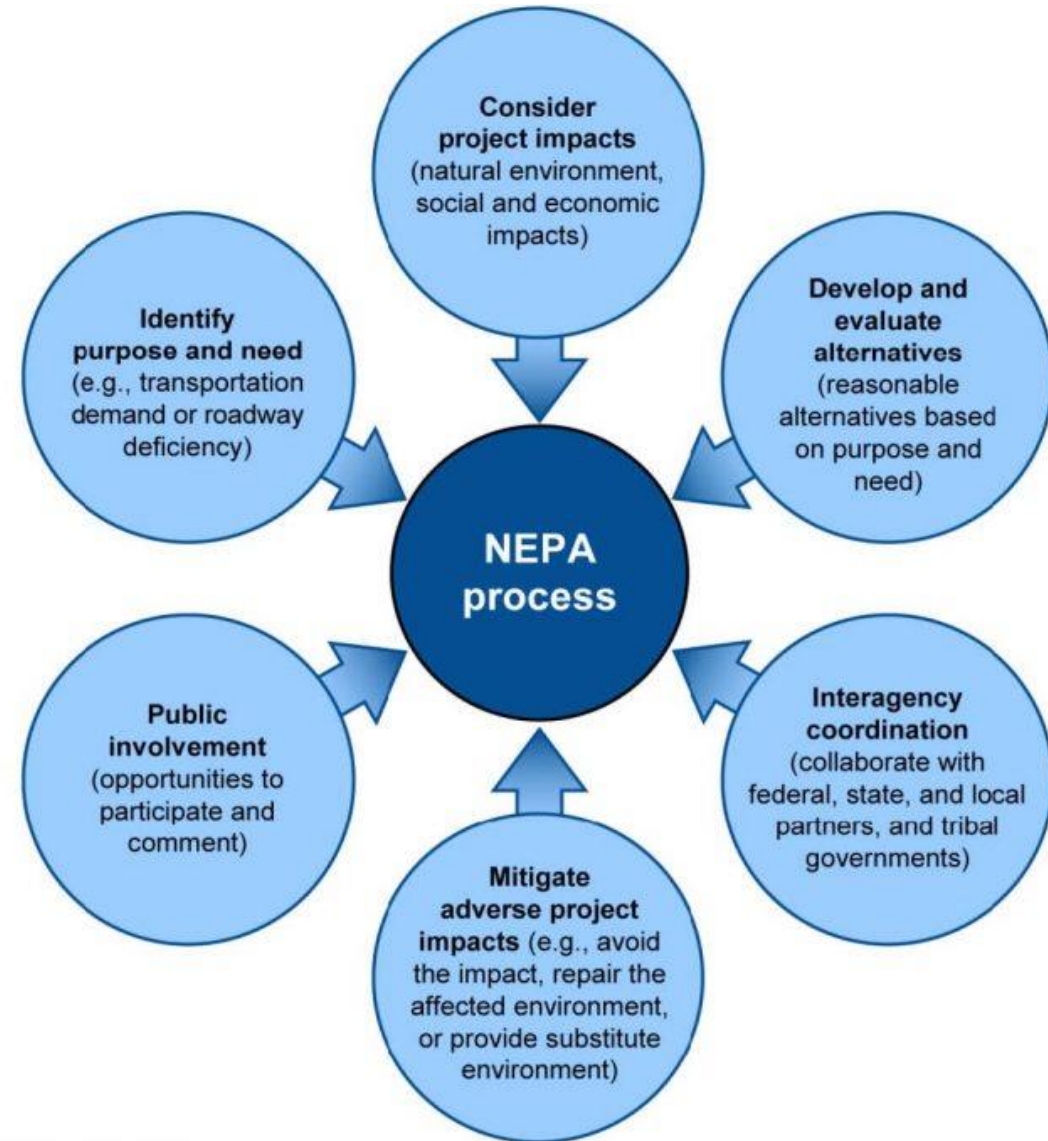


- Gulf Sturgeon – all Alternatives
- West Indian manatee – all Alternatives
- Red-cockaded woodpecker – upland areas of all Alternatives
- Gopher tortoise – upland areas of all Alternatives
- Views/Visual Resources– Alternative 9
- Environmental Justice communities – Alternatives 4 and 5
- Recreation – all Alternatives
- Historic & Cultural resources- Alternatives 4, 5, 6, 8, and 9
- HTRW – all Alternatives to prevent impacts

- Views of Mandeville Lakefront are being considered
- Impacts to the recreational value of Tammany Trace are being considered
- National Wildlife Refuge impacts would be minimized in close coordination with US Fish and Wildlife
- Marsh creation has been considered for all alternatives where practical

NATIONAL ENVIRONMENTAL POLICY ACT

The National Environmental Policy Act (NEPA) was signed into law by President Nixon on January 1, 1970. NEPA requires all federal agencies to consider the environmental impacts of any proposed action by developing a range of alternatives, provide opportunities for the public to provide input, and document the decision-making process so that interested and affected stakeholders can understand how the agency came to a decision. Implementation requires the publishing of a Notice of Intent in the Federal Register for Environmental Impact, and sometimes Environmental Assessments.





<u>Environmental Coordination</u>	Status
Initial 90-day Interagency Cooperation Meeting	Completed. A successful in-person/webinar was held on January 15, 2020 for the state and Federal agencies partners
Initial pre-scoping informational public meetings	Evening informational meetings for the public were held in Mandeville and Slidell on February 11-12, 2020
Compile Initial baseline conditions including FWOP conditions.	Completed March 2020
Initiate Fish and Wildlife Coordination Act scope	Completed. SOW and MIPR negotiated. The USFWS provided a Planning Aid Letter in accordance with the Fish and Wildlife Coordination Act on February 3, 2020
Alternatives Milestone Meeting	Completed Spring 2020
Notice of Intent published	June 19, 2020
Cooperating and participating agency invitation letters	July 2020
Public Scoping Meetings	July 14 and July 15, 2020

INPUT WE NEED FROM YOU



1. Do the alternatives meet the needs of the community?
2. Are there additional problems related to flooding in the project area that are not captured? Or not addressed by the proposed alternatives?
3. With what storm or rainfall event did your community see the most damages? How often are you seeing flooding?
4. Are there measures or alternative strategies that would address the problems more effectively?

TO SUBMIT COMMENTS

Comments will be accepted through August 3, 2020

Email: StTammanyFS@usace.army.mil

Address:

Amy Dixon

CEMVN-PMR,

7400 Leake Ave.

New Orleans, LA 70118

Text or Voicemail:

318-467-8350

Project Website:

<https://www.mvn.usace.army.mil/About/Projects/BBA-2018/studies/St-Tammany/>



US Army Corps
of Engineers®



US Army Corps
of Engineers®

THANK YOU FOR JOINING US

This concludes our broadcast.

Staff will continue to monitor
comments for approximately 30
minutes.