

West Bay

Southwest Pass

East Bay

South Pass

 Dredged Material  
Placement Sites - 2009

2009 Aerial Photo  
Background

**Mile 6.5 BHP West  
Marsh Creation Site**



**(Photo ~ 9 April 2009)**



Mile 6.5 BHP West  
Marsh Creation Site



(Photo – 9 April 2009)

Mile 6.5 BHP West  
Marsh Creation Site



(Photo – 3 April 2009)







**Southwest Pass**

**1871 Lighthouse**

**1839 Lighthouse**

**Mile 15.5 BHP West  
Marsh Creation Site**

**Mile 14.3 BHP West  
Marsh Creation Site**

(Aerial Photo - 26 March 2010)



**Burrwood  
Bayou**

**Southwest Pass**

**1871 Lighthouse**

**Pipeline Access Corridor**

**Mile 15.5 BHP West  
Marsh Creation Site**

**(Aerial Photo - 26 March 2010)**





**Southwest Pass**

**Mile 11.2 BHP East  
Marsh Creation Site**

(Aerial Photo - 26 March 2010)





## Southwest Pass

Mile 3.4 BHP West  
Bank Stabilization



(Aerial Photo - March 2011)



**Mile 3.4 BHP West  
Bank Stabilization**

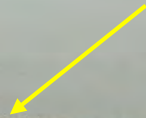


(Photo - 21 March 2011)



## Southwest Pass

Mile 3.4 BHP West Bank Stabilization



(Aerial Photo - March 2011)



Mile 13.9 BHP East  
Bank Stabilization



(Aerial Photo - 11 June 2011)





**Mile 14.1 BHP East  
Bank Stabilization**

(Aerial Photo - 21 March 2011)



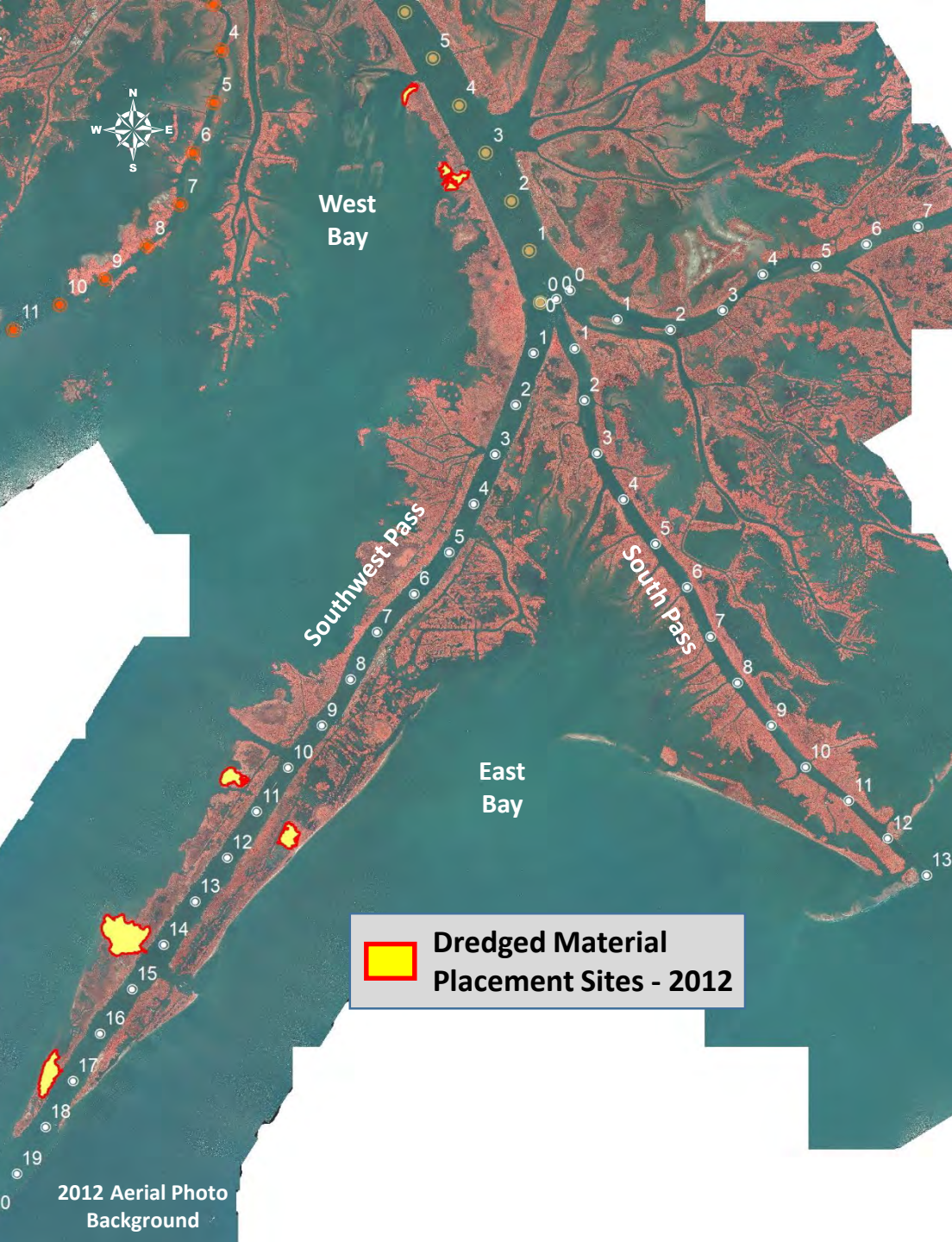
**Southwest Pass**

**Mile 2.0 BHP West  
Bank Marsh Creation**



**(Aerial Photo - March 2011)**









Mile 4.7 AHP West Bay  
Marsh Creation Site



727.520.8181  
[www.aerophoto.com](http://www.aerophoto.com)

Miss River SW Pass Maint Dredging  
OM11276 W912P82C0021

Image # 120702 6249  
Date 07.02.12



**Mile 14.3 BHP West  
Marsh Creation Site**

**Southwest Pass**

**1839 Lighthouse**



727.520.8181  
www.aerophoto.com

**Miss River SW Pass Maint Dredging  
OM11276 W912P82C0021**

Image # 120702 6258  
Date 07.02.12



**Mile 14.3 BHP West  
Marsh Creation Site**



Southwest Pass

**Mile 17.3 BHP West  
Marsh Creation Site**

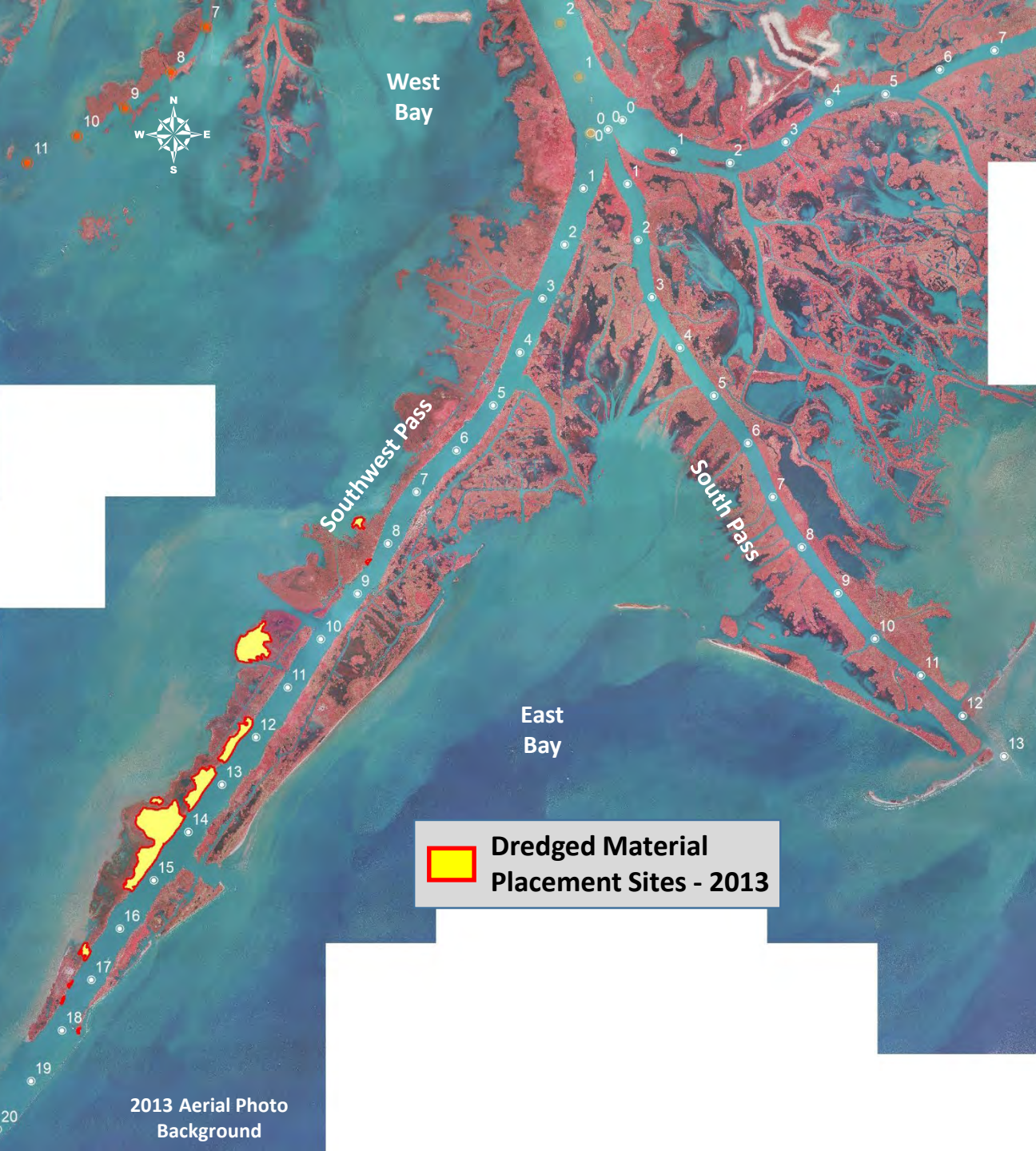


727.520.8181  
www.aerophoto.com

**Miss River SW Pass Maint Dredging  
OM11276 W912P82C0021**

Image # 120702 6261  
Date 07.02.12







**Mile 10.8R BHP West  
Marsh Creation Site**

Patrick M.  
[www.gulfcoast.com](http://www.gulfcoast.com)  
Slidell, LA 985



(Aerial Photo – 7 August 2013)



An aerial photograph showing a large, elongated marsh area with a complex network of waterways. The marsh is characterized by patches of green vegetation interspersed with brown, muddy water. A prominent waterway, labeled 'Southwest Pass', runs diagonally from the upper left towards the center. To the right of this pass, a large, irregularly shaped area of brown, unvegetated sediment is visible, labeled 'Mile 10.8 BHP West Marsh Creation Site' with a yellow arrow pointing to it. The surrounding water is a deep blue-grey color. The overall scene depicts a coastal wetland environment undergoing restoration or creation.

Southwest Pass

Mile 10.8 BHP West  
Marsh Creation Site

(Aerial Photo - 7 Aug 2013)



East Bay

Burrwood Bayou

Southwest Pass

Mile 14.1 BHP West  
Marsh Creation Site



(Aerial Photo – 7 August 2013)



**Southwest Pass**

**Mile 17.5 BHP East  
Bank Stabilization Site**

(Aerial Photo – 7 August 2013)





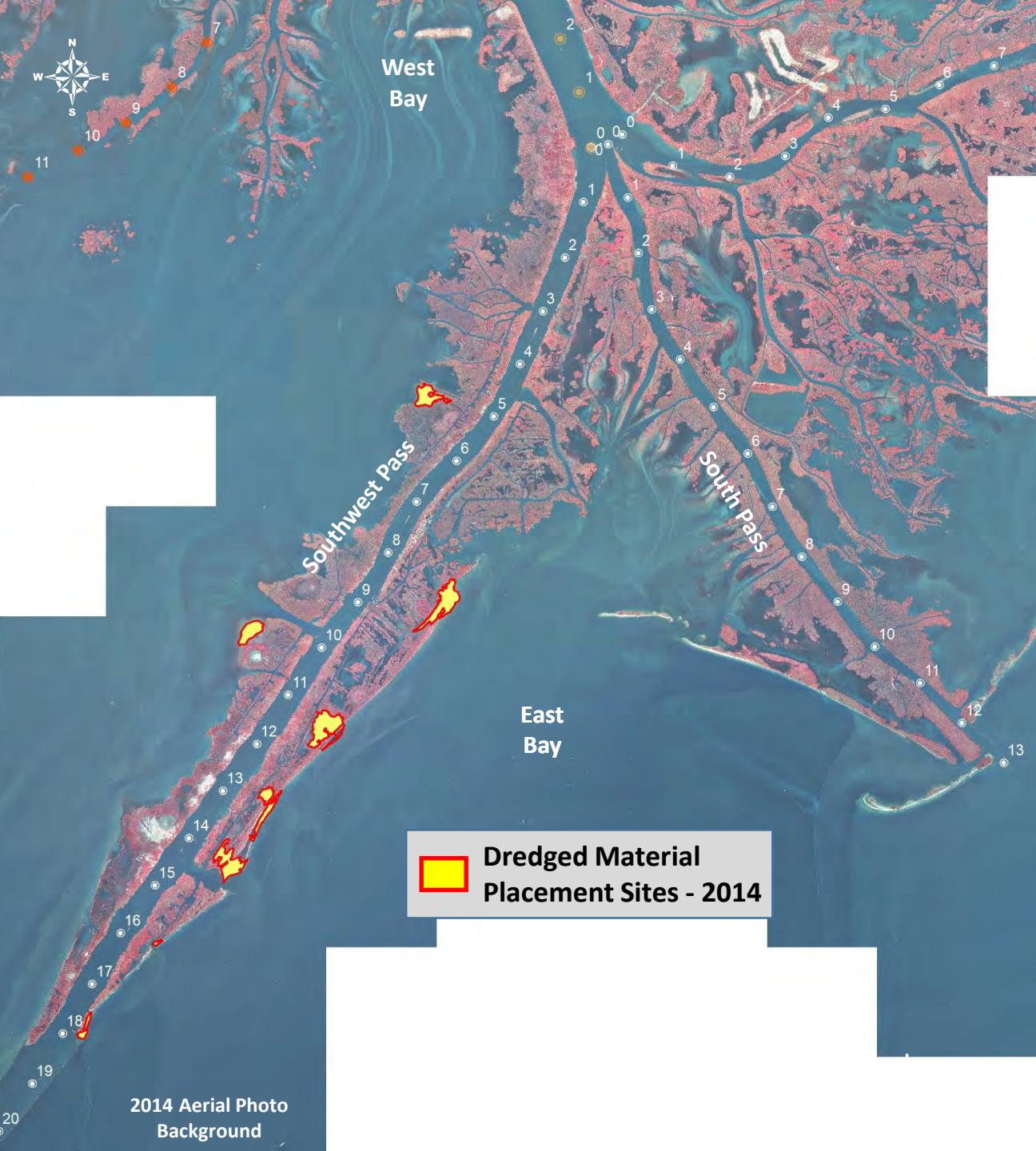
**Southwest  
Pass**

**1871 Lighthouse**

**Mile 13.1 BHP to 15.1 BHP West  
Marsh Creation Site**

**(Aerial Photo – 7 August 2013)**









East Bay

Southwest Pass

Mile 5.3 BHP West  
Marsh Creation Site

Photo by: Patrick M. Quigley  
[www.gulfcoastairphoto.com](http://www.gulfcoastairphoto.com)  
985.788.3458


(Aerial Photo – 2 April 2014)





**Southwest Pass**


**Mile 8.2 BHP East  
Marsh Creation Site**



**(Aerial Photo – 2 May 2014)**

Photo by: Patrick M. Quigley  
Gulf Coast Air Photo, LLC  
A SDAV owned small business.





**Southwest  
Pass**

**Bar Pilot Station**

**Mile 17.8 BHP East  
Marsh Creation Site**

**Southwest Pass East Jetty**

**(Aerial Photo – 25 June 2014)**

Patrick M  
www.gulfcoas  
985.78  
A SDAV owned





**Southwest Pass**

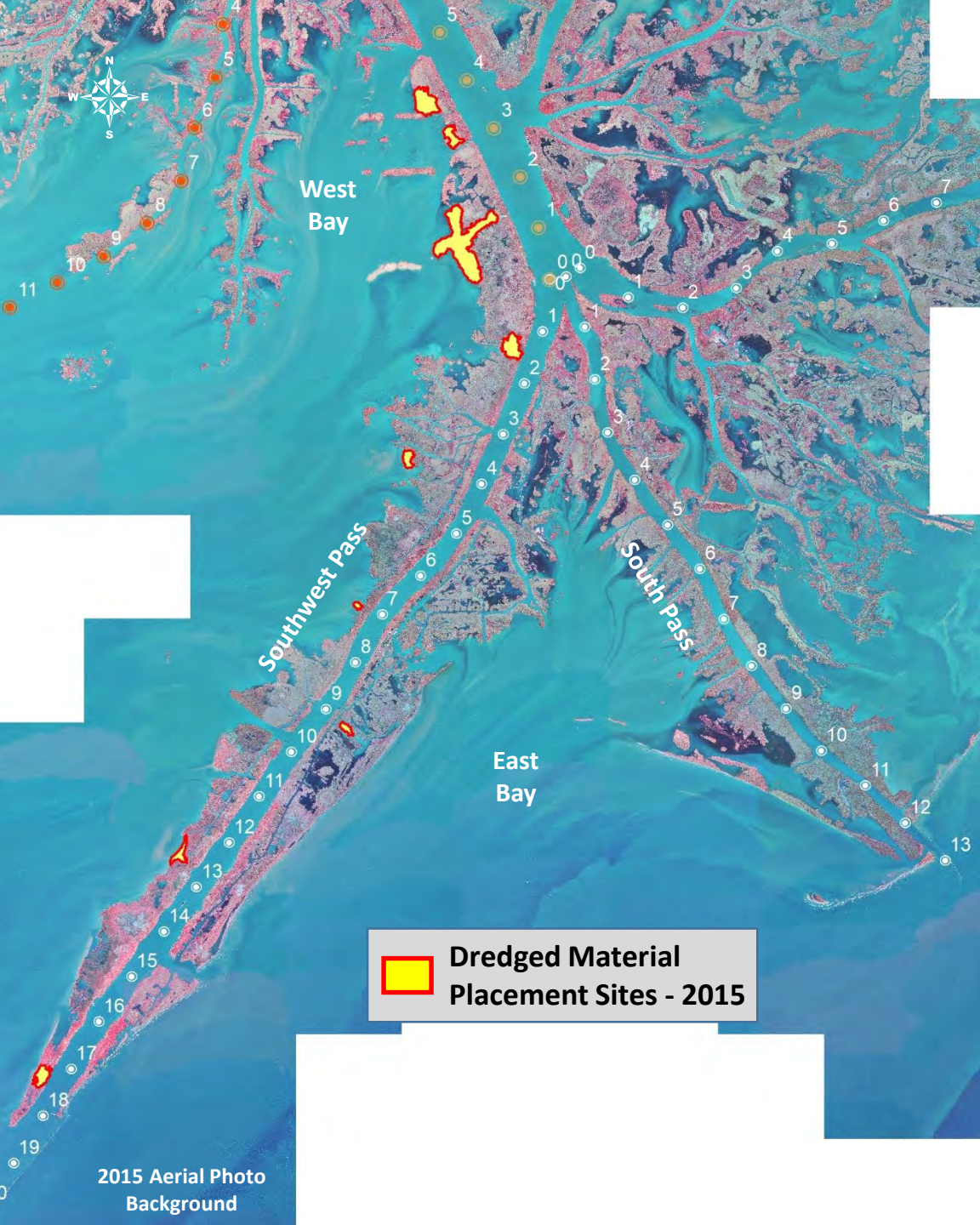
**Bar Pilot Station**

**Mile 17.8 BHP East  
Marsh Creation Site**

**(Aerial Photo – 25 June 2014)**

Patrick M. Quigley  
www.gulfcoastairphoto.com  
985.788.3455  
A SDAV owned small business









Joseph's Bayou

Southwest Pass

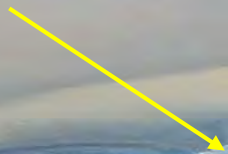
Mile 3.8 BHP West  
Marsh Creation Site

(Aerial Photo – 10 February 2015)

Patrick M. Quigley  
www.gulfcoastairphoto.com  
985.788.3458  
A SDAV owned small business



**Mile 7.1 BHP West  
Marsh Creation Site**



**Southwest  
Pass**

**(Aerial Photo – 6 March 2015)**

Patrick M. Quigley  
www.gulfcoastairphoto.com  
A SDAV owned small business  
985.788.3458





**Mile 8.0 BHP West  
Marsh Creation Site**

**Mile 7.1 BHP West  
Marsh Creation Site**

**Southwest Pass**

**(Aerial Photo – 28 March 2015)**

Patrick M. Quigley  
www.gulfcoastairphoto.com  
985.788.3458  
A SDAV owned small business



An aerial photograph of a coastal area featuring a large body of water, a winding waterway, and extensive marshland. The marshland is characterized by patches of green vegetation interspersed with areas of yellowish-brown sediment or algae. A yellow arrow points from the text 'Mile 9.0 BHP East Marsh Creation Site' to a specific location within the waterway. In the upper right, the text 'Southwest Pass' is written in black, slanted font. The overall scene depicts a natural or semi-natural coastal environment.

**Mile 9.0 BHP East  
Marsh Creation Site**

**Southwest Pass**





Cubit's Gap

Southwest Pass

Mile 4.0 AHP  
West Bay  
Marsh Creation Site

(Aerial Photo - 3 July 2015)

Patrick M. Quigley  
www.gulfcoastairphoto.com  
Slidell, LA 985.788.3458  
A SDAV owned small business.









**Southwest Pass**

**Burrwood  
Bayou**

**Mile 14.2 BHP East  
Marsh Creation Site**





**Southwest Pass**

**Mile 16.8 BHP East  
Marsh Creation Site**



**(Aerial Photo – 3 February 2016)**

Patrick M. Quigley  
www.gulfcoastairphoto.com  
Slidell, LA 985.788.3458  
A SDAV owned small business.





Southwest  
Pass

Burrwood Bayou

East  
Bay

Mile 17.9 BHP East  
Marsh Creation Site

Bar Pilot Station

Southwest Pass East Jetty

(Aerial Photo – March 2016)





Cubit's Gap

Southwest Pass

**Mile 1.6 AHP  
West Bay  
Marsh Creation Site**





**Cubit's Gap**

**Southwest Pass**

**Mile 2.4 AHP  
West Bay  
Marsh Creation Site**

**(Aerial Photo – 30 May 2016)**

Patrick M. Quigley  
www.gulfcoastairphoto.com  
Slidell, LA 985.788.3458  
A SDAV owned small business.





**Mile 1.4 AHP  
West Bay  
Marsh Creation Site**

**Mile 1.6 AHP  
West Bay  
Marsh Creation Site**

**Mile 2.4 AHP  
West Bay  
Marsh Creation Site**

**West Bay  
Diversion**

**Mississippi River**

**Southwest Pass**









**Mile 1.4 AHP  
West Bay  
Marsh Creation Site**

**Mile 1.6 AHP  
West Bay  
Marsh Creation Site**

**Mile 2.4 AHP  
West Bay  
Marsh Creation Site**

**Southwest Pass**

**Mississippi River**

**West Bay  
Diversion**



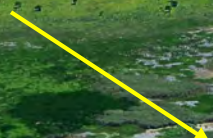


Pass a Loutre

South Pass

Southwest Pass

**Mile 1.2 BHP  
West Bay  
Marsh Creation Site**



**(Aerial Photo – 4 May 2016)**

Patrick M. Quigley  
www.gulfcoastairphoto.com  
Slidell, LA 985.788.3458  
A SDAV owned small business.





**Southwest Pass**

**Mile 6.8 BHP West  
Marsh Creation Site**

**(Aerial Photo – 13 March 2016)**

Patrick M. Quigley  
www.gulfcoastairphoto.com  
Slidell, LA 985.788.3458  
A SDAV owned small business.





East Bay

Southwest Pass

Mile 6.8 BHP West  
Marsh Creation Site

(Aerial Photo – April 2016)





**Mile 6.8 BHP West  
Marsh Creation Site**

**Southwest Pass**

**(Aerial Photo – April 2016)**



Patrick M. Quigley  
www.gulfcoastairphoto.com  
Slidell, LA 985.788.3458  
A SDAV owned small business.

Cubit's Gap

Mississippi River

Mile 1.6 AHP  
West Bay  
Marsh Creation Site



(Aerial Photo – 3 April 2016)





Mile 1.4 AHP  
West Bay  
Marsh Creation Site

Mile 1.6 AHP  
West Bay  
Marsh Creation Site

Mile 2.4 AHP  
West Bay  
Marsh Creation Site

West Bay  
Diversion

Southwest Pass

(Aerial Photo – 3 April 2016)

Patrick M. Quigley  
www.gulfcoastairphoto.com  
Slidell, LA 985.788.3458  
A SDAV owned small business.





Cubit's Gap

Lower Mississippi River

Mile 2.4 AHP

West Bay

Marsh Creation Site

Mile 1.6 AHP

West Bay

Marsh Creation Site

(Aerial Photo – 4 May 2016)

Patrick M. Quigley  
www.gulfcoastairphoto.com  
Slidell, LA 985.788.3458  
A SDAV owned small business







# Mile 8.2 BHP East Marsh Creation Site

Southwest Pass





East Bay

Southwest Pass

Outlet W-2

**Mile 10.5 BHP West  
Marsh Creation Site**

**(Aerial Photo – 25 May 2017)**

Taken May 25, 2017  
Patrick M. Quigley  
[www.gulfcoastairphoto.com](http://www.gulfcoastairphoto.com)  
Slidell, LA 985.788.3458  
A SDAV owned small business.



**Mile 10.5 BHP West  
Marsh Creation Site**



**Southwest Pass**

**Outlet W-2**

**Mile 11.0 BHP East  
Marsh Creation Site**



**(Aerial Photo – 25 May 2017)**

Taken May 25, 2017  
Patrick M. Quigley  
[www.gulfcoastairphoto.com](http://www.gulfcoastairphoto.com)  
Slidell, LA 985.788.3458  
A SDAV owned small business.



**Mile 13.8 BHP West  
Marsh Creation Site**



**Southwest Pass**

**(Aerial Photo – 30 July 2017)**

Taken July 30, 2017  
Patrick M. Quigley  
[www.gulfcoastairphoto.com](http://www.gulfcoastairphoto.com)  
Slidell, LA 985.788.3458  
A SDAV owned small business.



**Southwest Pass**

**Mile 13.8 BHP West  
Marsh Creation Site**

Taken July 30, 2017  
Patrick M. Quigley  
[www.gulfcoastairphoto.com](http://www.gulfcoastairphoto.com)  
Slidell, LA 985.788.3458  
A SDAV owned small business.

(Aerial Photo – 30 July 2017)





Southwest Pass

Burrwood Bayou

Mile 14.3 BHP East  
Marsh Creation Site

(Aerial Photo – 30 July 2017)

Taken July 30, 2017  
Patrick M. Quigley  
[www.gulfcoastairphoto.com](http://www.gulfcoastairphoto.com)  
Slidell, LA 985.788.3458  
A SDAV owned small business.



**Southwest Pass  
1871 Lighthouse**



**Dredge  
Pipeline**

**Southwest Pass Mile 15.0 BHP West Marsh Creation Site (August 2017)**





East Bay

Mile 17.8 BHP East  
Marsh Creation Site

Southwest Pass East Jetty

Bar Pilot  
Station

Southwest Pass

(Aerial Photo – 30 July 2017)

Taken July 30, 2017  
Patrick M. Quigley  
www.gulfcoastairphoto.com  
Slidell, LA 985.788.3458  
A SDAV owned small business.



Southwest  
Pass

Mile 17.5 BHP East  
Marsh Creation Site

(Aerial Photo – 30 July 2017)

Taken July 30, 2017  
Patrick M. Quigley  
www.gulfcoastairphoto.com  
Slidell, LA 985.788.3458  
A SDAV owned small business.