

AMITE RIVER AND TRIBUTARIES – COMITE RIVER DIVERSION PROJECT

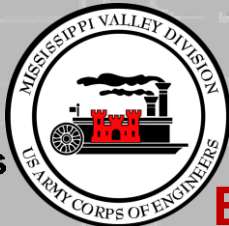
Briefing to the Amite River Basin Task Force

COL Stephen Murphy - USACE
Dr. Shawn Wilson - LaDOTD
Michael Futch – Energy Transfer

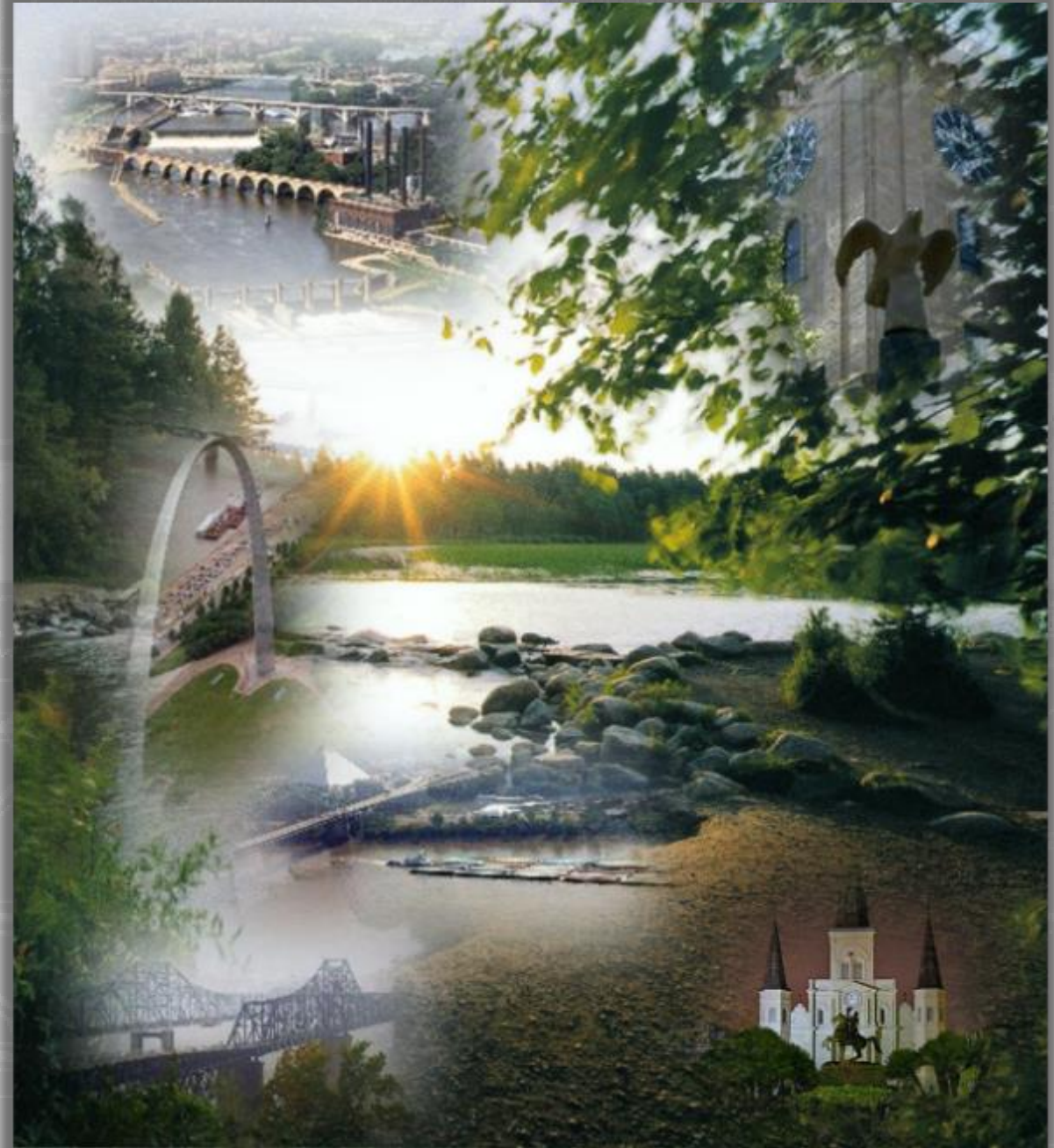
August 17, 2022



US Army Corps
of Engineers®



BUILDING STRONG®





COMITE RIVER DIVERSION PROJECT USACE ORGANIZATION CHART

2



MVN District Commander:
COL Stephen Murphy



Deputy District Engineer for
Project Management
Mark Wingate, P.E.



Assistant Deputy DPM
(Baton Rouge Office)
C. Nick Sims



Project Engineer
(Baton Rouge Office)
CPT Colin Westlake, P.E.



Sr. Project Manager
Bobby Duplantier



BUILDING STRONG®



COMITE RIVER DIVERSION PROJECT DOTD ORGANIZATION CHART

3



DOTD Secretary:
Dr. Shawn Wilson



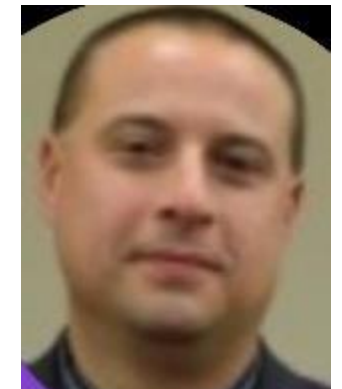
Chief Engineer
Christopher Knotts, P.E.



Deputy Assist.
Secretary Public Works
Patrick Landry, P.E.



Sr. Project Manager
Christina Brignac, P.E.



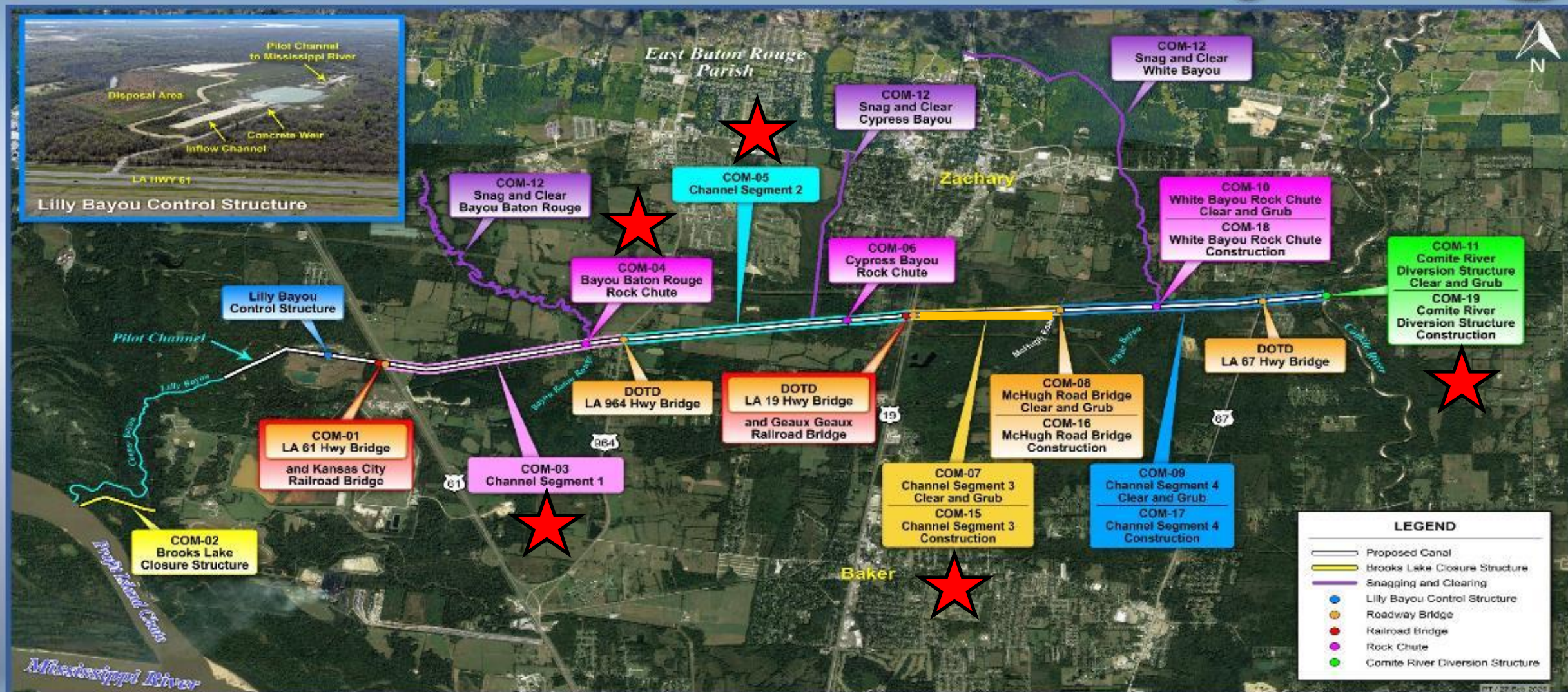
Utilities & Land
Manager
Roy Payne, P.E.



BUILDING STRONG®



Comite River Diversion Project

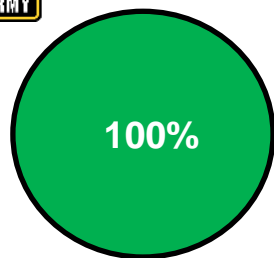


USACE will deliver 18 construction contracts, to include four main channel segments, two vehicular bridges, one railroad bridge, three rock chutes, diversion structure, and four low flow pumping stations.

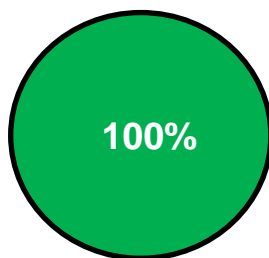
LADOTD will deliver 3 construction contracts, to include three vehicular bridges, one railroad bridge, land acquisition, and utility relocations.



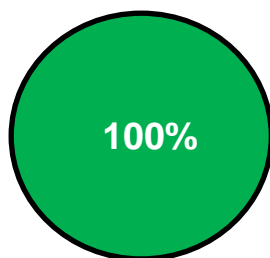
Construction Status and Remaining Contracts



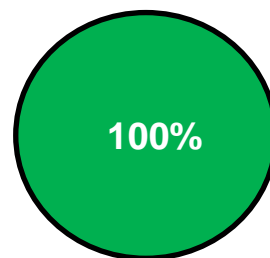
MITIGATION
CREDIT 1



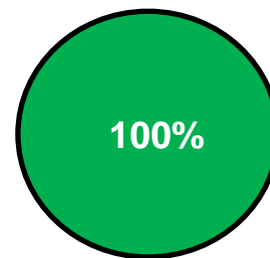
MITIGATION
CREDIT 2



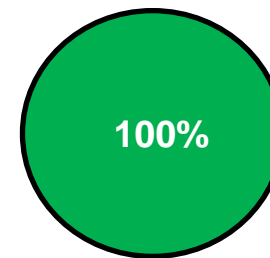
MITIGATION
CREDIT 3



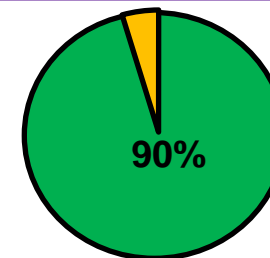
CLEAR & GRUB
EAST OF McHUGH



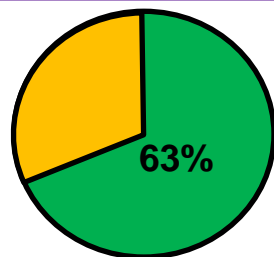
CLEAR & GRUB
WEST OF McHUGH



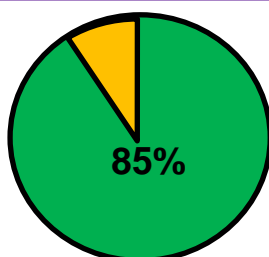
LILLY BAYOU
PHASE I



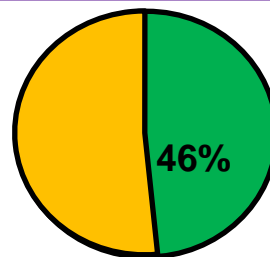
LILLY BAYOU
PHASE II



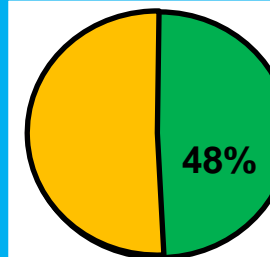
McHUGH ROAD
BRIDGE



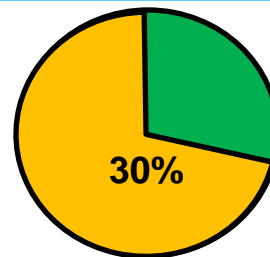
HWY 61/KCS RR



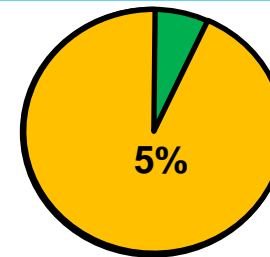
WHITE BAYOU
ROCK CHUTE



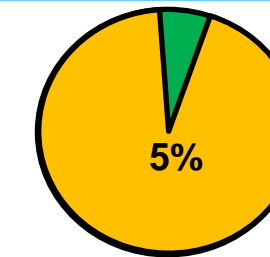
CHANNEL SEG 4



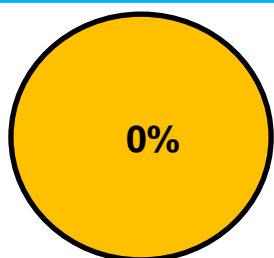
CHANNEL SEG 2A



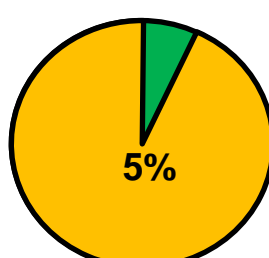
CYPRESS BAYOU
ROCK CHUTE



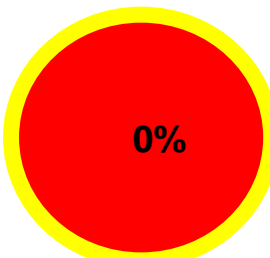
LA 67 (DOTD)



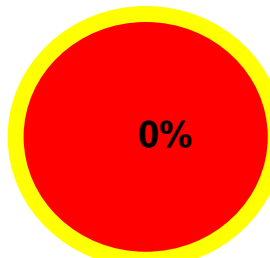
LA 19 (DOTD)



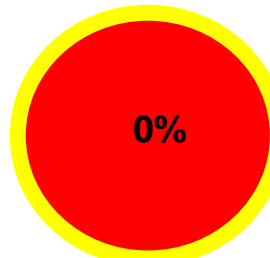
LA 964 (DOTD)



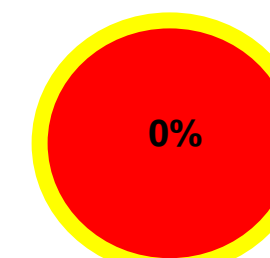
CHANNEL SEG 1



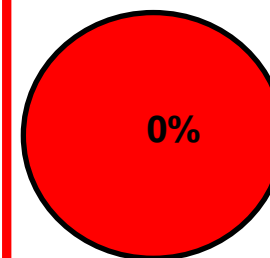
CHANNEL SEG 2B



BAYOU BATON
ROUGE ROCK
CHUTE



CHANNEL SEG 3



DIVERSION
STRUCTURE



BUILDING STRONG®

UTILITY
RELOCAT



CY 2022 Completion

CY 2023 Completion

Focus of this brief



COMITE RIVER DIVERSION OVERVIEW

6



The Project consists of 21 separable contracts:

- **18 USACE Construction Contracts**
 - ❖ 13 of 18 contracts awarded
 - ❖ **6 construction contracts are complete**
 - ❖ 7 construction contracts are ongoing
 - ❖ **5 remaining contracts**
- **3 DOTD Construction Contracts**
 - ❖ **LA 964** (Awarded 24 March 2022)
 - ❖ **LA67** (Awarded 8 March 2022)
 - ❖ **LA19** (Anticipated Award August 2022)



Hwy 61/KCS RR Construction



Channel Segment 4 & McHugh Rd Construction



BUILDING STRONG.



ONGOING CONSTRUCTION



COM 01: Hwy 61/ KCS Bridge (85% Complete)

COM 18: White Bayou Rock Chute Phase 2 (46% Complete)

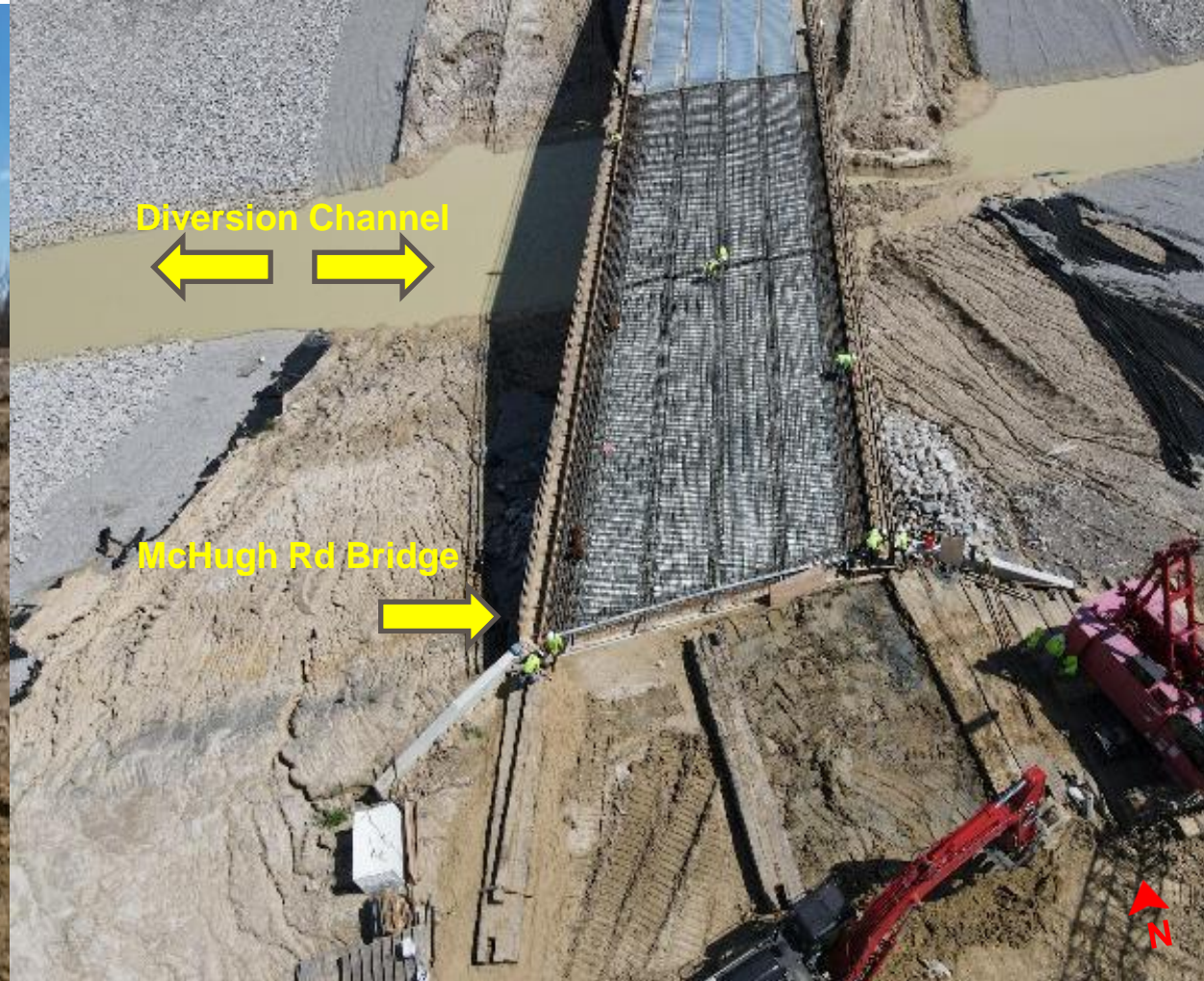


ONGOING CONSTRUCTION



COM 17: Channel Segment 4 Phase 2
(48% Complete)

COM 16: McHugh Road Bridge
(63% Complete)





ONGOING CONSTRUCTION

COM 05: Channel Segment 2A
(30% Complete)





ONGOING CONSTRUCTION

COM 21: Lilly Bayou Phase 2

(90% Complete)

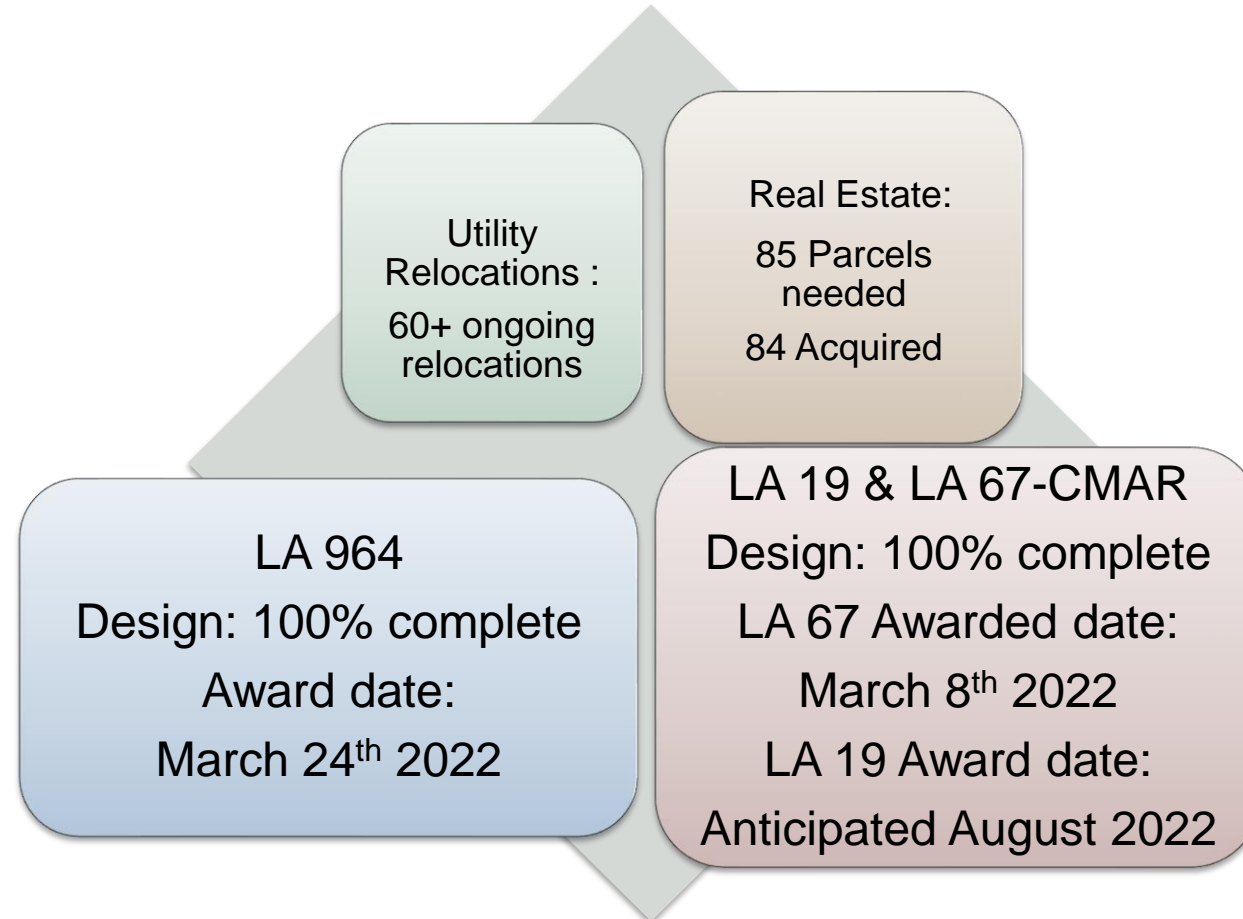




DOTD Project tasks 2022-2023



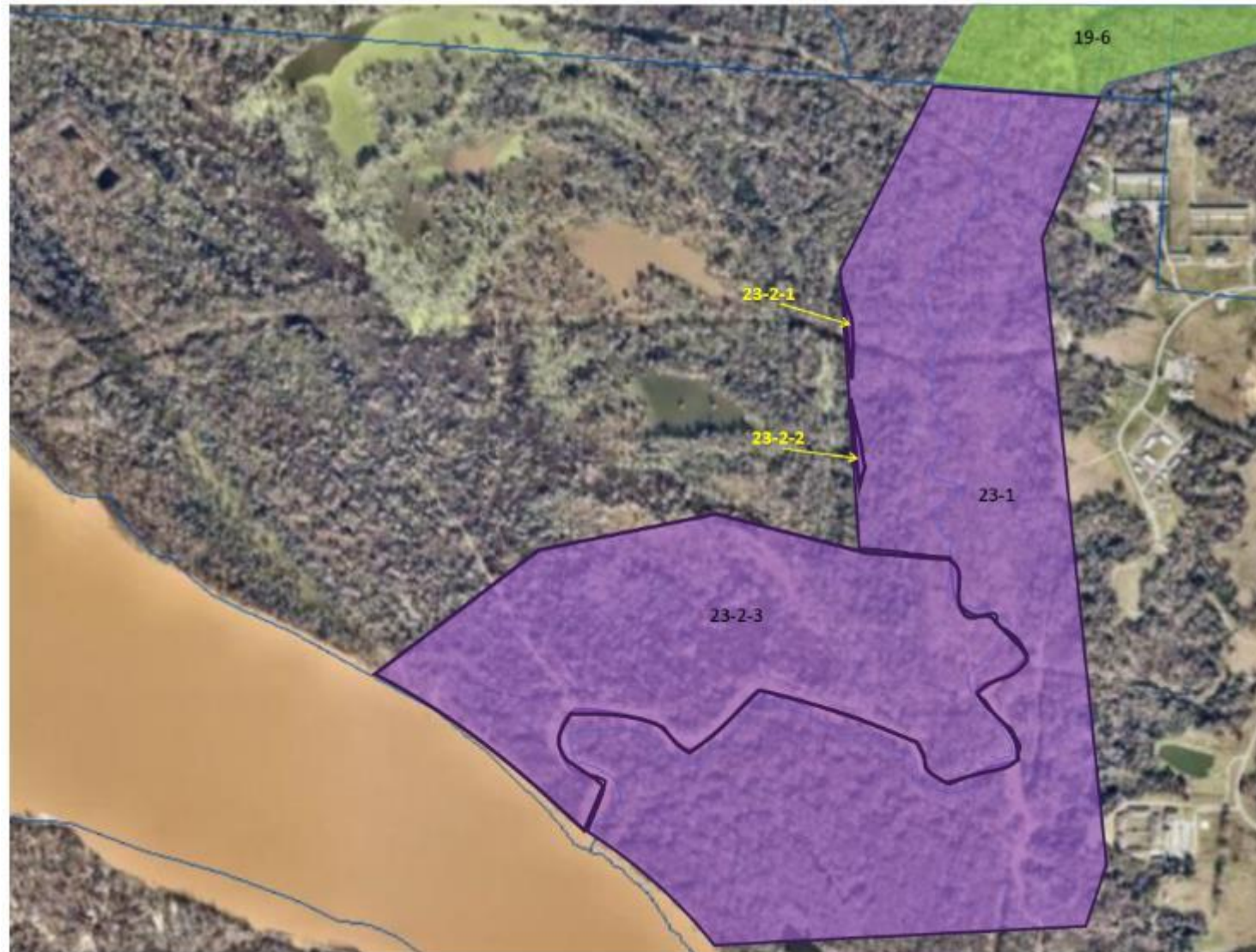
Ongoing DOTD tasks





Real Estate Acquisitions to date-Brooks Lake on-hold for design

12



Status Key

- Public Right of Way
- Waiting for Appraisal Approval
- Negotiating
- Closing
- Expropriation Suit Pending
- Acquired
- Design change or other delay



BUILDING STRONG.



Real Estate Acquisitions to date-US 61



Status Key

- Public Right of Way
- Waiting for Appraisal Approval
- Negotiating
- Closing
- Expropriation Suit Pending
- Acquired
- Design change or other delay





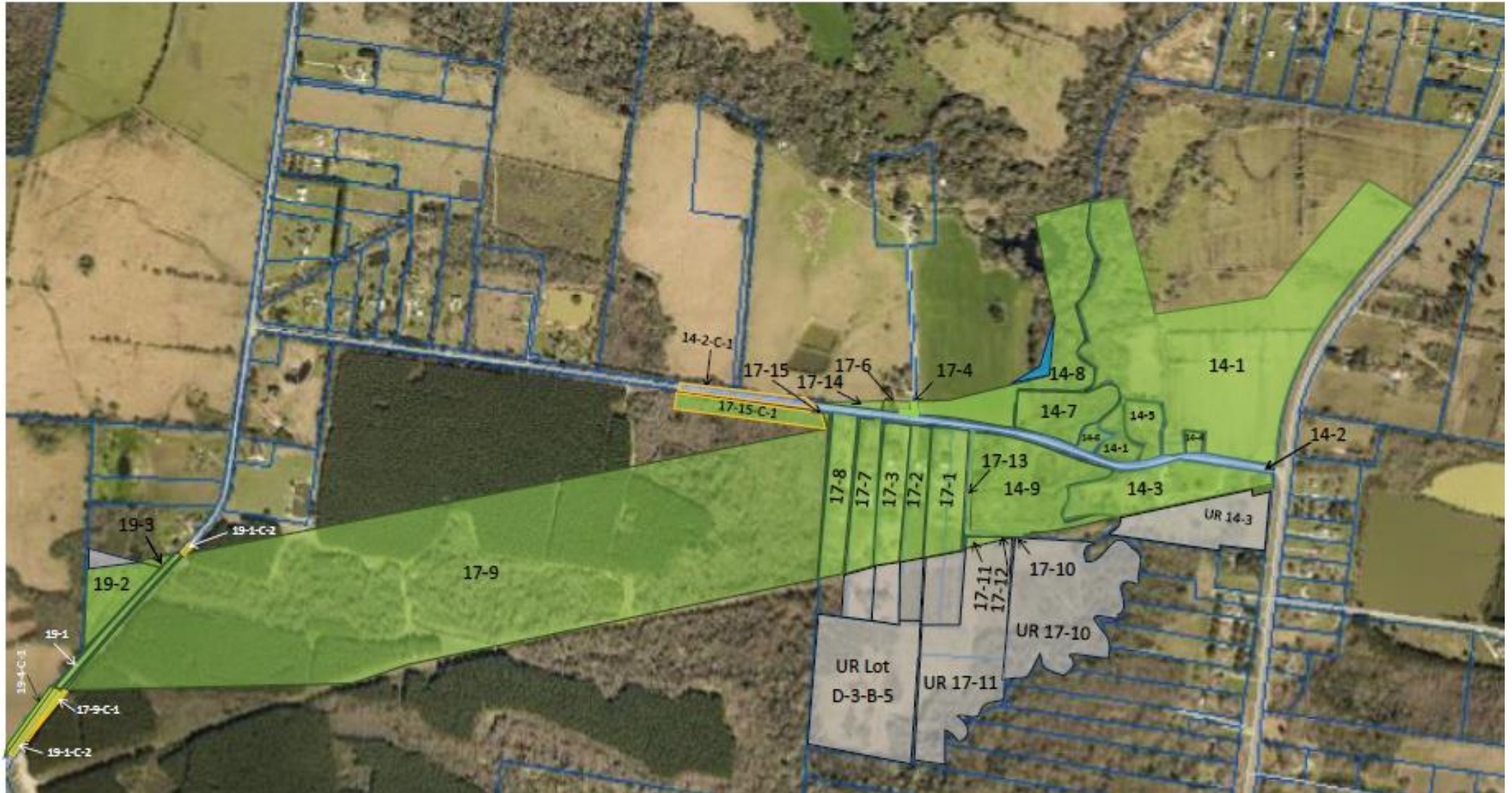
Real Estate Acquisitions to date- Channel Segment 1 & Bayou Baton Rouge

14



Status Key

- Public Right of Way
- Waiting for Appraisal Approval
- Negotiating
- Closing
- Expropriation Suit Pending
- Acquired
- Design change or other delay



BUILDING STRONG®



Real Estate Acquisitions to date- LA 964 & Channel Segment 2

15



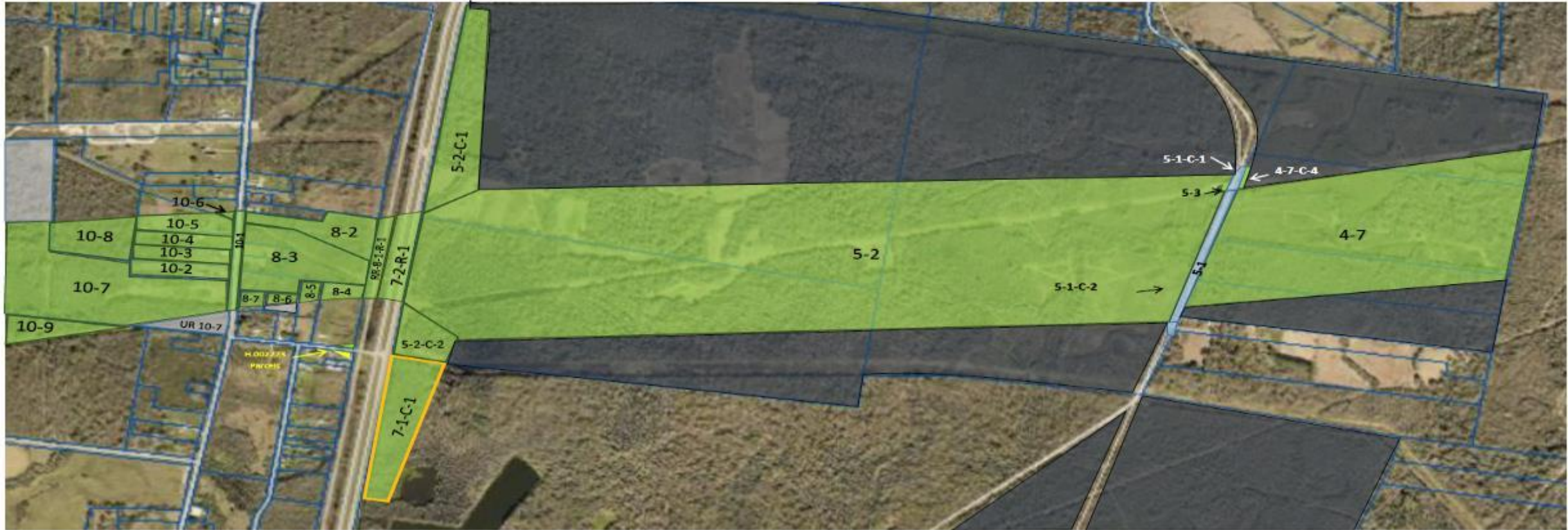
Status Key

- Public Right of Way
- Waiting for Appraisal Approval
- Negotiating
- Closing
- Expropriation Suit Pending
- Acquired
- Design change or other delay



BUILDING STRONG®

Real Estate Acquisitions to date-LA 19, Channel Segment 3, & McHugh Road



Status Key

- Public Right of Way
- Waiting for Appraisal Approval
- Negotiating
- Closing
- Expropriation Suit Pending
- Acquired
- Design change or other delay



BUILDING STRONG®



Real Estate Acquisitions to date- Channel Segment 4 & LA 67

17



Status Key

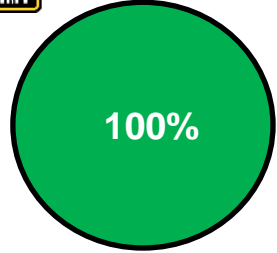
- Public Right of Way
- Waiting for Appraisal Approval
- Negotiating
- Closing
- Expropriation Suit Pending
- Acquired
- Design change or other delay



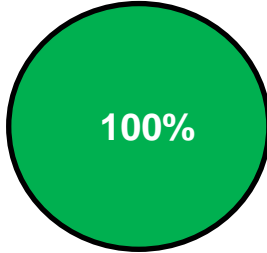
BUILDING STRONG®



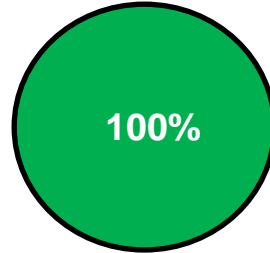
Construction Status and Remaining Contracts



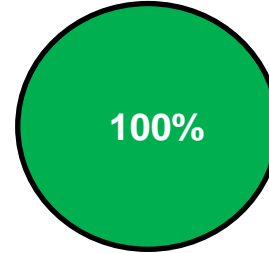
MITIGATION
CREDIT 1



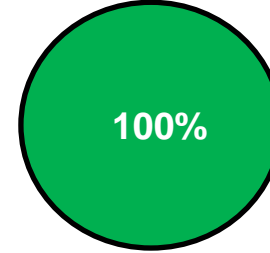
MITIGATION
CREDIT 2



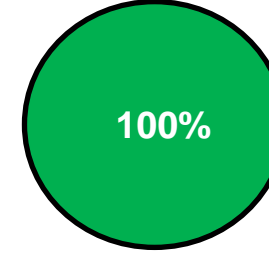
MITIGATION
CREDIT 3



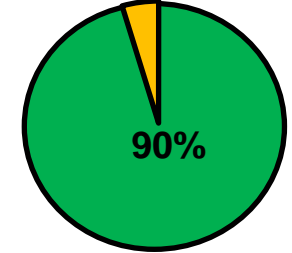
CLEAR & GRUB
EAST OF McHUGH



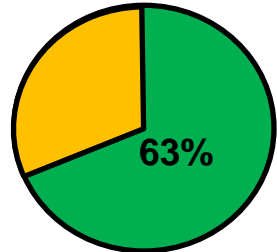
CLEAR & GRUB
WEST OF McHUGH



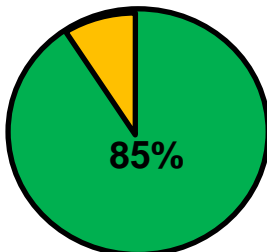
LILLY BAYOU
PHASE I



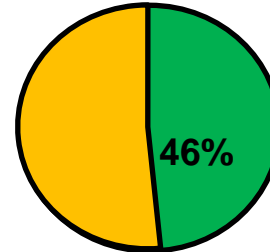
LILLY BAYOU
PHASE II



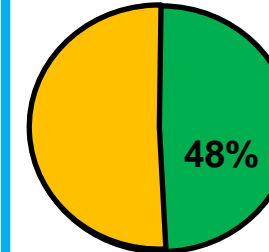
McHUGH ROAD
BRIDGE



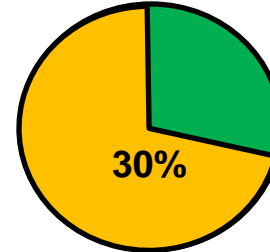
HWY 61/KCS RR



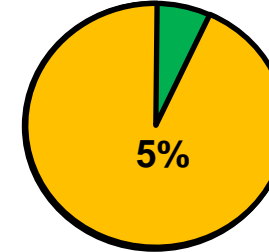
WHITE BAYOU
ROCK CHUTE



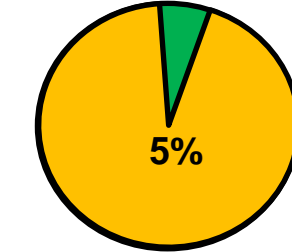
CHANNEL SEG 4



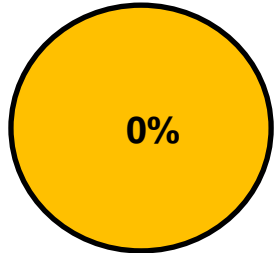
CHANNEL SEG 2A



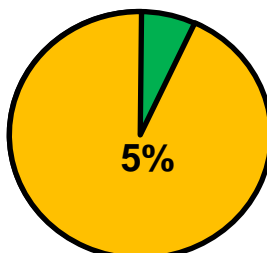
CYPRESS BAYOU
ROCK CHUTE



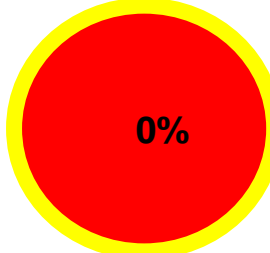
LA 67 (DOTD)



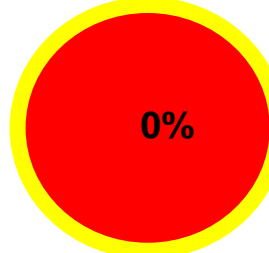
LA 19 (DOTD)



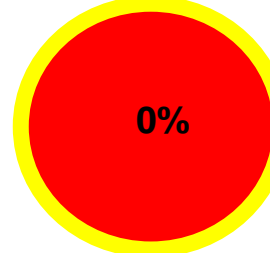
LA 964 (DOTD)



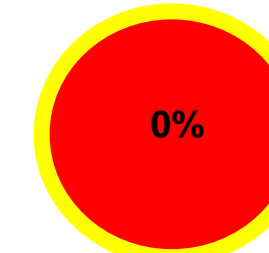
CHANNEL SEG 1



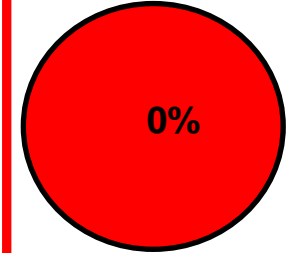
CHANNEL SEG 2B



BAYOU BATON
ROUGE ROCK
CHUTE



CHANNEL SEG 3



DIVERSION
STRUCTURE



BUILDING STRONG®

UTILITY
RELOCAT



CY 2022 Completion

CY 2023 Completion

Focus of this brief



Comite River Diversion Completion



Calandar Year	2022				2023				2024				2025			
	QTR				QTR				QTR				QTR			
Remaining Contracts	1	2	3	4	1	2	3	4	1	2	3	4	1	2	3	4
Channel Seg #1																
Channel Seg #2B																
Diversion Structure																
Bayou Baton Rouge																
Channel Seg #3																

Estimated Completion Range: 4th Qtr. 2024 to 3rd Qtr. 2025

Green range reflects uncertainty in construction completion based on relocation timeline





QUESTIONS

For additional information please contact:



Bobby Duplantier

Bobby.Duplantier@usace.army.mil



Christina Brignac, P.E.

Christina.Brignac@la.gov



BUILDING STRONG®