

PUBLIC NOTICE

August 27, 2018

United States Army Corps of Engineers
New Orleans District
Regulatory Branch
7400 Leake Avenue
New Orleans, LA 70118-3651

State of Louisiana
Department of Environmental Quality
Water Permits Division
Post Office Box 4313
Baton Rouge, Louisiana 70821-4313

(504) 862-2272
Project Manager
Amy Oestringer
Amy.L.Oestringer@usace.army.mil
Permit Application Number
MVN-2015-01676 WQQ

(225) 219-3225
Project Manager
Elizabeth Hill

WQC Application Number
WQC # 180821-02

Interested parties are hereby notified that a permit application has been received by the New Orleans District of the U.S. Army Corps of Engineers pursuant to: [] Section 10 of the Rivers and Harbors Act of March 3, 1899 (30 Stat. 1151; 33 USC 403); and/or [X] Section 404 of the Clean Water Act (86 Stat. 816; 33 USC 1344).

ALEXANDRIA INTERNATIONAL AIRPORT INDUSTRIAL DEVELOPMENT AT SITE E2 IN RAPIDES PARISH

NAME OF APPLICANT: England Economic and Industrial Development District, c/o Pan American Engineers, Attn: Thomas C. David Jr., 1717 Jackson Street, Alexandria, Louisiana 71301.

LOCATION OF WORK: 1611 Arnold Drive, in Alexandria, Louisiana, Rapides Parish, as shown in the enclosed drawings.

Latitude: 31.331667° Longitude: -92.530000° Hydrologic Unit Code 08080102 Bayou Teche

CHARACTER OF WORK: The proposed work area is approximately 42 acres. The applicant proposes installation and maintenance of fill to prepare the site for construction of a 350,000 square foot industrial facility and associated infrastructure. Approximately 1,350 linear feet of the existing unnamed jurisdictional ditch into Big Bayou will be filled. A new rerouted ditch will be excavated to allow for proper drainage of upstream areas and the newly developed site. The rerouted ditch will discharge at the same location of the existing ditch, as shown on the attached drawings. Approximately 0.8 acre of jurisdictional wetlands will be permanently filled, therefore, the applicant proposes to purchase in-kind compensatory mitigation credits from a Corps approved mitigation bank to offset unavoidable losses to wetland functions.

The comment period for the Department of the Army Permit will close **20 days** from the date of this public notice. Written comments, including suggestions for modifications or objections to the proposed work, stating reasons thereof, are being solicited from anyone having interest in this permit must be mailed so as to be received before or by the last day of the comment period. Letters concerning the Corps of Engineers permit application must

reference the applicant's name and the Permit Application Number, and be mailed to the Corps of Engineers at the address above, ATTENTION: **REGULATORY BRANCH**. Individuals or parties may request an extension of time in which to comment on the proposed work by writing or e-mailing the Corps of Engineers Project Manager listed above. Any request must be specific and substantively supportive of the requested extension, and received by this office prior to the end of the initial comment period. The Section Chief will review the request and the requestor will be promptly notified of the decision to grant or deny the request. If granted, the time extension will be continuous to the initial comment period and, inclusive of the initial comment period, will not exceed a total of 30 calendar days.

Corps of Engineers Permit Criteria

The decision whether to issue a permit will be based on an evaluation of the probable impacts, including cumulative impacts of the proposed activity on the public interest. That decision will reflect the national concern for both protection and utilization of important resources. The benefit which reasonably may be expected to accrue from the proposal must be balanced against its reasonably foreseeable detriments. All factors which may be relevant to the proposal will be considered including the cumulative effects thereof; among those are conservation, economics, aesthetics, general environmental concerns, wetlands, historic properties, fish and wildlife values, flood hazards, floodplain values, land use, navigation, shoreline erosion and accretion, recreation, water supply and conservation, water quality, energy needs, safety, food and fiber production, mineral needs, considerations of property ownership and, in general, the needs and welfare of the people.

The U.S. Army Corps of Engineers is soliciting comments from the public, federal, state, and local agencies and officials, Indian Tribes, and other interested parties in order to consider and evaluate the impacts of this proposed activity. Any comments received will be considered by the U.S. Army Corps of Engineers to determine whether to make, modify, condition, or deny a permit for this proposal. To make this decision, comments are used to assess impacts on endangered species, historic properties, water quality, general environmental effects, and other public interest factors listed above. Comments are used in the preparation of an Environmental Assessment and/or an Environmental Impact Statement pursuant to the National Environmental Policy Act. Comments are also used to determine the need for a public hearing and to determine the overall public interest of the proposed activity.

No properties listed on the National Register of Historic Places near the proposed work. The possibility exists that the proposed work may damage or destroy presently unknown archeological, scientific, prehistorical, historical sites, or data. Copies of this notice are being sent to the State Archeologist and the State Historic Preservation Officer.

The New Orleans District has determined that the proposed activity will have no effect on the Pallid sturgeon, the Interior least tern, the Northern long eared bat, and the Louisiana pearlshell mussel, utilizing the dichotomous key Standard Local Operating Procedure for Endangered Species of Louisiana (SLOPES), dated October 22, 2014, between the U.S. Army Corps of Engineers and U.S. Fish and Wildlife Service, Ecological Services Office.

Our initial finding is that the proposed work would not affect any species, nor affect any habitat designated as critical to the survival and recovery of such species, listed as endangered by the U.S. Department of Commerce.

This notice initiates the Essential Fish Habitat (EFH) consultation requirements of the Magnus-Stevens Fishery Conservation and Management Act. Our initial determination is that the proposed action would not have a substantial adverse impact on EFH or federally managed fisheries in the Gulf of Mexico. Our final determination relative to project impacts and the need for mitigation measures is subject to review by and coordination with the National Marine Fisheries Service.

If the proposed work involves deposits of dredged or fill material into navigable waters, the evaluation of the probable impacts will include the application of guidelines established by the Administrator of the Environmental Protection Agency and certification that the proposed activity will not violate applicable water quality standards will be required from the Louisiana Department of Environmental Quality, Office of Environmental Services, before a permit is issued.

Any person may request, in writing, within the comment period specified in this notice, that a public hearing be held to consider this application. Requests for public hearings shall state, with particularity, the reasons for holding a public hearing.

You are requested to communicate the information contained in this notice to any other parties whom you deem likely to have interest in the matter.

The applicant has certified that the project will be conducted in a manner that is consistent with the Louisiana Coastal Resources Program.

Darrell S. Barbara
Chief, Western Evaluation Section
Regulatory Branch

DEPARTMENT OF ARMY PERMIT DRAWINGS
FOR

**ALEXANDRIA INTERNATIONAL AIRPORT
INDUSTRIAL DEVELOPMENT AT SITE E2**



SHEET INDEX

1. TITLE SHEET
2. VICINITY MAP-USGS MAP
3. SITE MAP-AERIAL
4. SITE PLAN
5. SECTIONS
6. SECTIONS
7. QUANTITIES

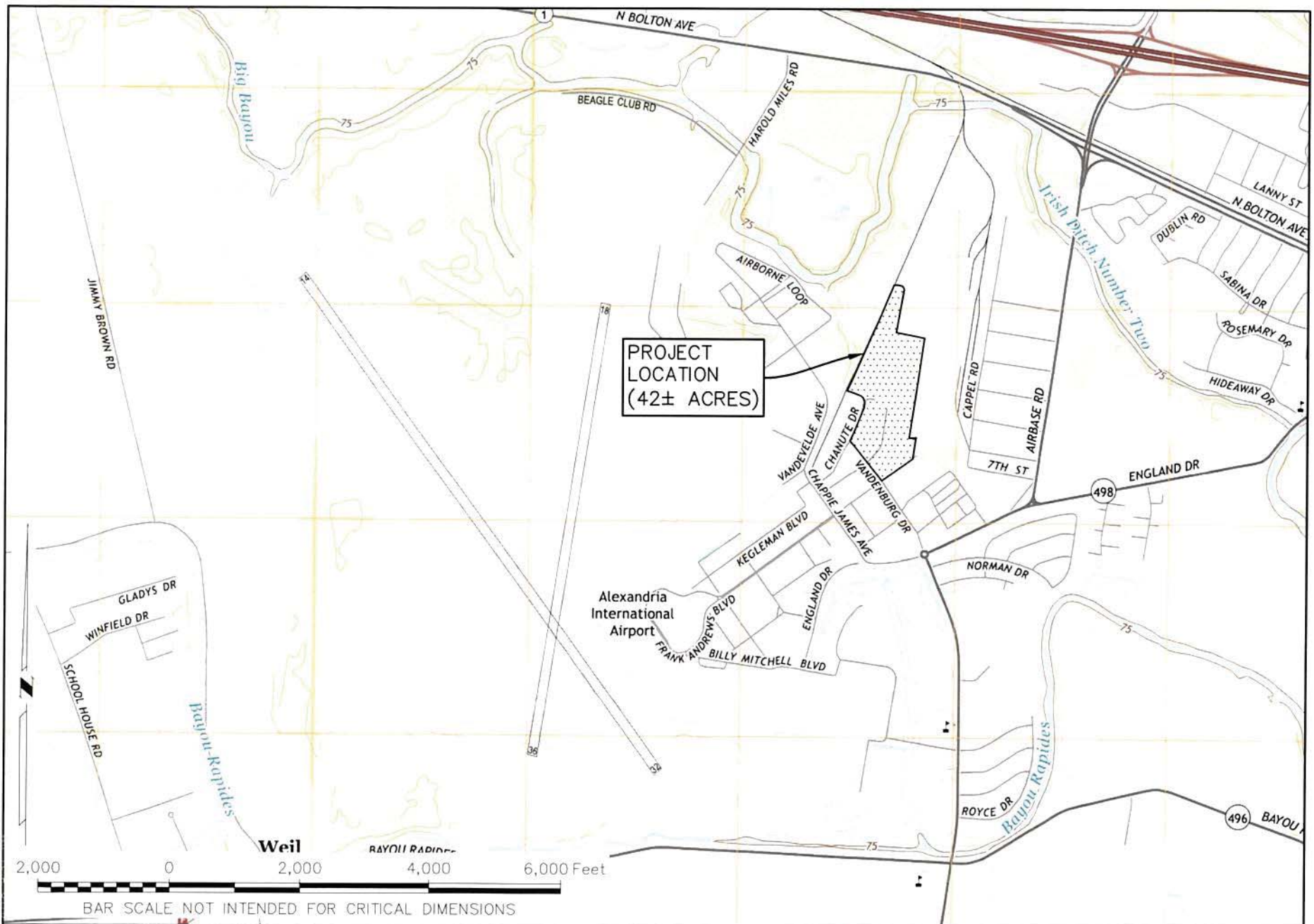


PAN AMERICAN ENGINEERS, LLC
P.O. BOX 89 / 1717 JACKSON STREET
ALEXANDRIA, LA.
71301 318-473-2100

TITLE SHEET

SECTIONS 34 & 35, T4N-R2W, RAPIDES PARISH
LATITUDE: 31.33408 - LONGITUDE: -92.53044

1
OF
7

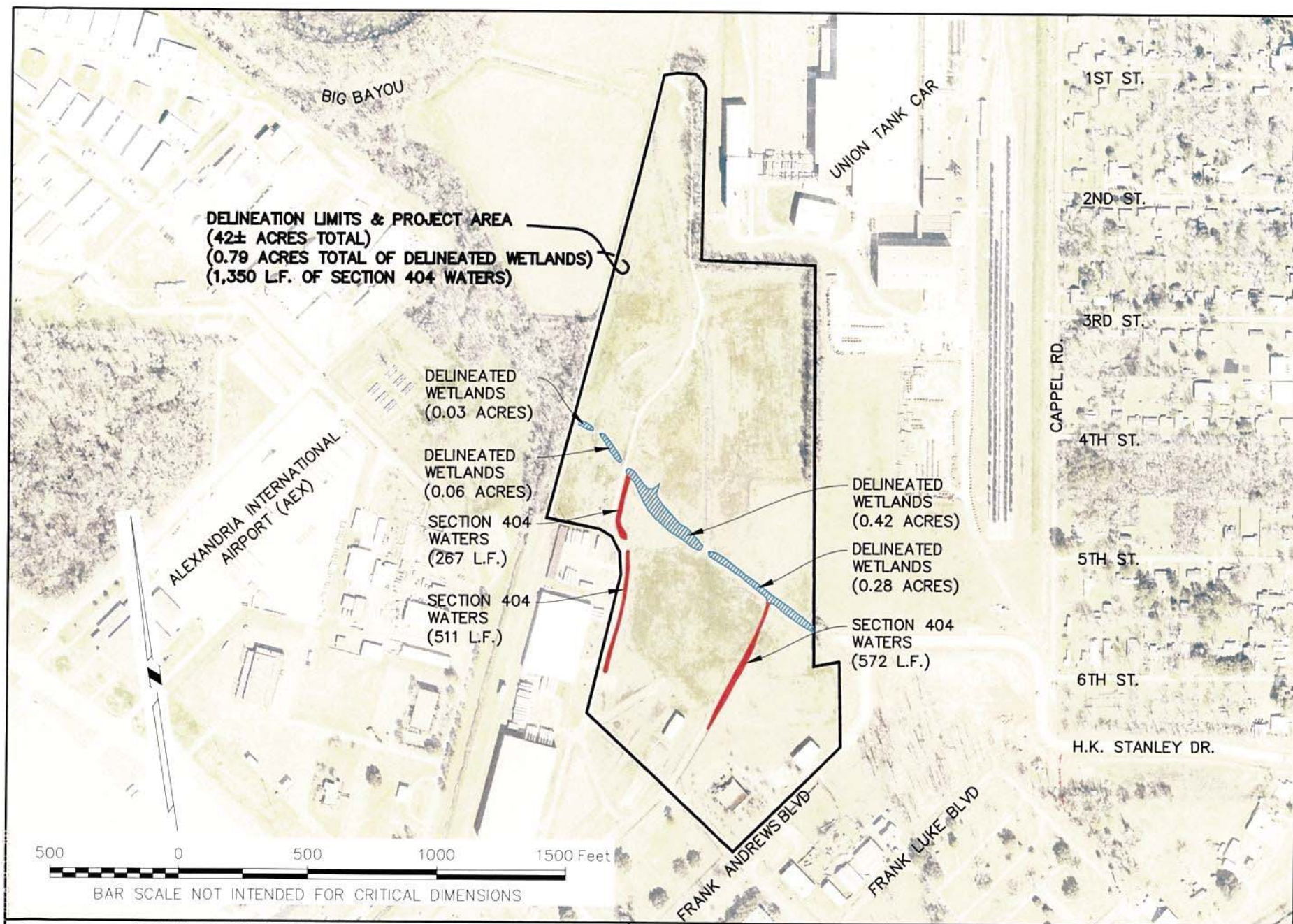


PAN AMERICAN ENGINEERS, LLC
 P.O. BOX 88 / 1717 JACKSON STREET
 ALEXANDRIA, LA.
 71301 318-473-2100

VICINITY MAP-USGS MAP

SECTIONS 34 & 35, T4N-R2W, RAPIDES PARISH
 LATITUDE: 31.33408 - LONGITUDE: -92.53044

2
OF
7



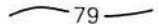







PAN AMERICAN ENGINEERS, LLC
 P.O. BOX 89 / 1717 JACKSON STREET
 ALEXANDRIA, L.A.
 71301 318-473-2100

SITE MAP-AERIAL

SECTIONS 34 & 35, T4N-R2W, RAPIDES PARISH
 LATITUDE: 31.33408 - LONGITUDE: -92.53044

3
OF
7

1 LEGEND

-  EXISTING CONTOUR
-  PROPOSED CONTOUR
-  DELINEATED WETLAND
-  SECTION 404 WATERS
-  DELINEATION LIMITS & PROJECT LIMITS
-  DESIGNATION
(SEE SHEET 7
FOR QUANTITIES)
-  SECTION (SEE SHEETS 5 & 6)
-  REROUTED DITCH

500 0 500 1000 1500 Feet

BAR SCALE NOT INTENDED FOR CRITICAL DIMENSIONS

UNION TANK CAR

2ND ST.

3RD ST.

4TH ST.

5TH ST.

6TH ST.

H.K. STANLEY DR.

CAPPEL RD.

ALEXANDRIA INTERNATIONAL AIRPORT
(AEX)

FRANK ANDREWS BLVD

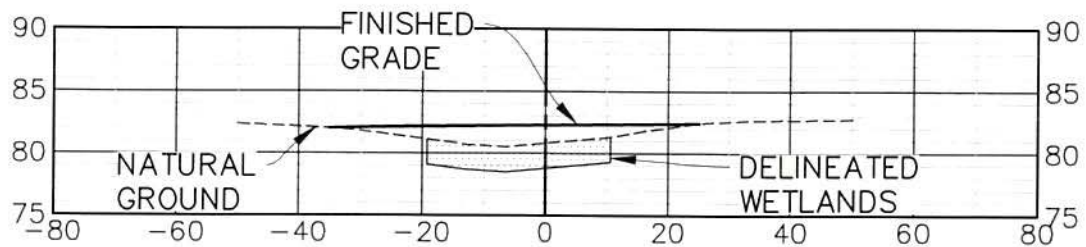
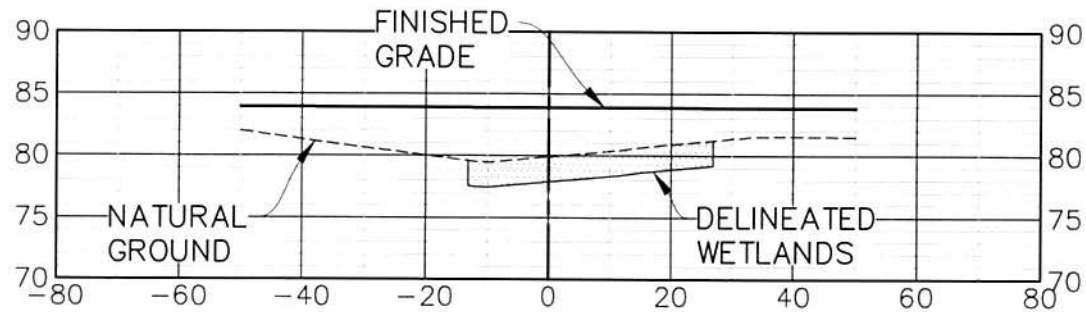
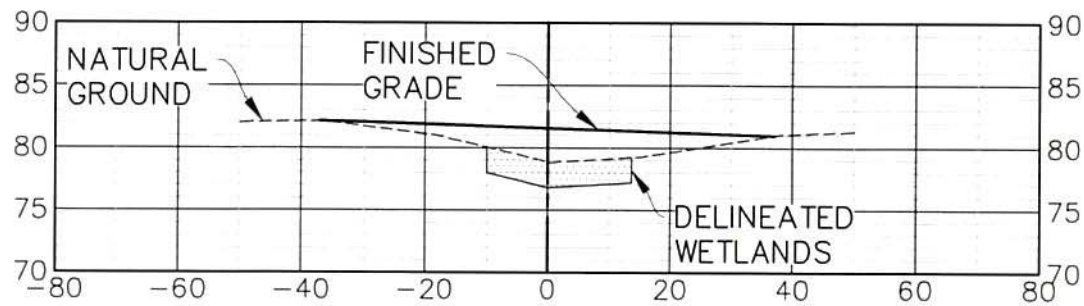
FRANK LUKE BLVD



PAN AMERICAN ENGINEERS, LLC
P.O. BOX 89 / 1717 JACKSON STREET
ALEXANDRIA, LA.
71301 318-473-2100

SITE PLAN

SECTIONS 34 & 35, T4N-R2W, RAPIDES PARISH
LATITUDE: 31.33408 - LONGITUDE: -92.53044

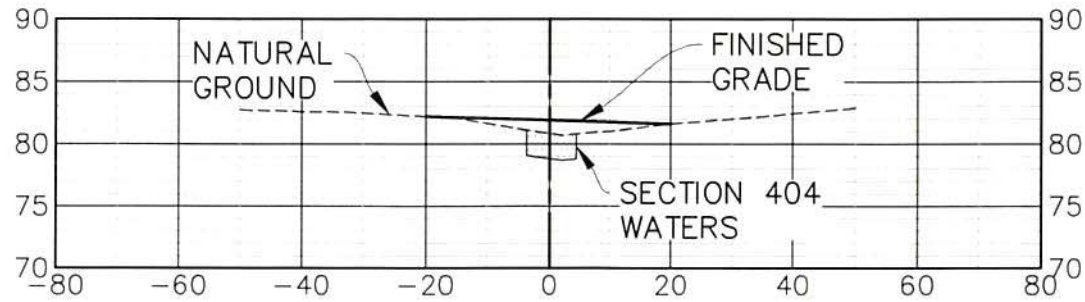


PAN AMERICAN ENGINEERS, LLC
P.O. BOX 89 / 1717 JACKSON STREET
ALEXANDRIA, LA.
71301 318-473-2100

SECTIONS

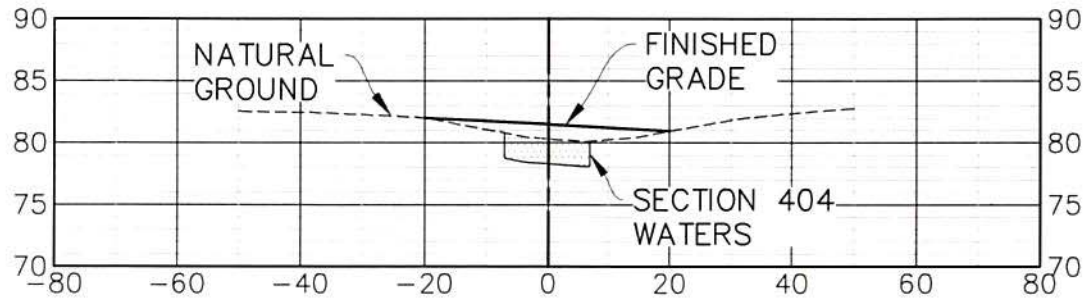
SECTIONS 34 & 35, T4N-R2W, RAPIDES PARISH
LATITUDE: 31.33408 - LONGITUDE: -92.53044

5
OF
7



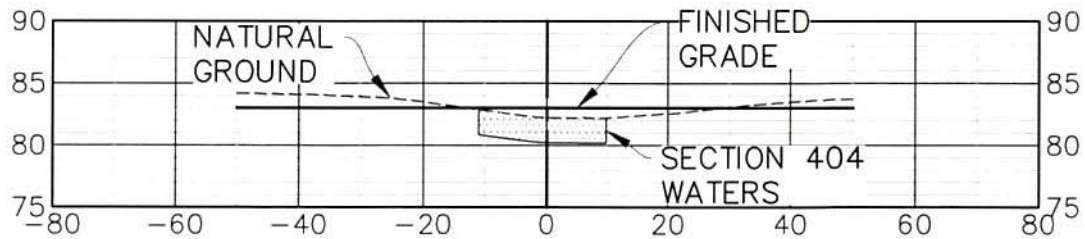
Section D-D

SCALE: 1"=30' HORIZ
1"=15' VERT.



Section E-E

SCALE: 1"=30' HORIZ
1"=15' VERT.



Section F-F

SCALE: 1"=30' HORIZ
1"=15' VERT.



PAN AMERICAN ENGINEERS, LLC
P.O. BOX 89 / 1717 JACKSON STREET
ALEXANDRIA, LA.
71301 318-473-2100

SECTIONS

SECTIONS 34 & 35, T4N-R2W, RAPIDES PARISH
LATITUDE: 31.33408 - LONGITUDE: -92.53044

6
OF
7

DESIGNATED WETLANDS

1	
CUT MATERIAL (EARTHWORK)	0 CY
FILL MATERIAL (EARTHWORK)	70 CY
AFFECTED AREA	0.03 AC

2	
CUT MATERIAL (EARTHWORK)	0 CY
FILL MATERIAL (EARTHWORK)	207 CY
AFFECTED AREA	0.06 AC

3	
CUT MATERIAL (EARTHWORK)	0 CY
FILL MATERIAL (EARTHWORK)	2247 CY
AFFECTED AREA	0.42 AC

4	
CUT MATERIAL (EARTHWORK)	0 CY
FILL MATERIAL (EARTHWORK)	1058 CY
AFFECTED AREA	0.28 AC

TOTAL QUANTITIES IMPACTING DESIGNATED WETLANDS	
CUT MATERIAL (EARTHWORK)	0 CY
FILL MATERIAL (EARTHWORK)	3,582 CY
AFFECTED ACRES	0.79

SECTION 404 WATERS

5	
CUT MATERIAL (EARTHWORK)	0 CY
FILL MATERIAL (EARTHWORK)	139 CY
AFFECTED L.F.	267

7	
CUT MATERIAL (EARTHWORK)	1 CY
FILL MATERIAL (EARTHWORK)	210 CY
AFFECTED L.F.	572

6	
CUT MATERIAL (EARTHWORK)	0 CY
FILL MATERIAL (EARTHWORK)	139 CY
AFFECTED L.F.	511

TOTAL QUANTITIES IMPACTING SECTION 404 WATERS	
CUT MATERIAL (EARTHWORK)	1 CY
FILL MATERIAL (EARTHWORK)	488 CY
AFFECTED L.F.	1,350

TOTAL QUANTITIES IMPACTING JURISDICTIONAL AREAS	
CUT MATERIAL (EARTHWORK)	1 CY
FILL MATERIAL (EARTHWORK)	4,070 CY
AFFECTED ACRES	0.79
AFFECTED LINEAR FEET	1,350



PAN AMERICAN ENGINEERS, LLC
P.O. BOX 89 / 1717 JACKSON STREET
ALEXANDRIA, LA.
71301 318-473-2100

QUANTITIES

SECTIONS: 34 & 35, T4N-R2W, RAPIDES PARISH
LATITUDE: 31.33408 - LONGITUDE: -92.53044

7
OF
7