

# VICINITY MAP

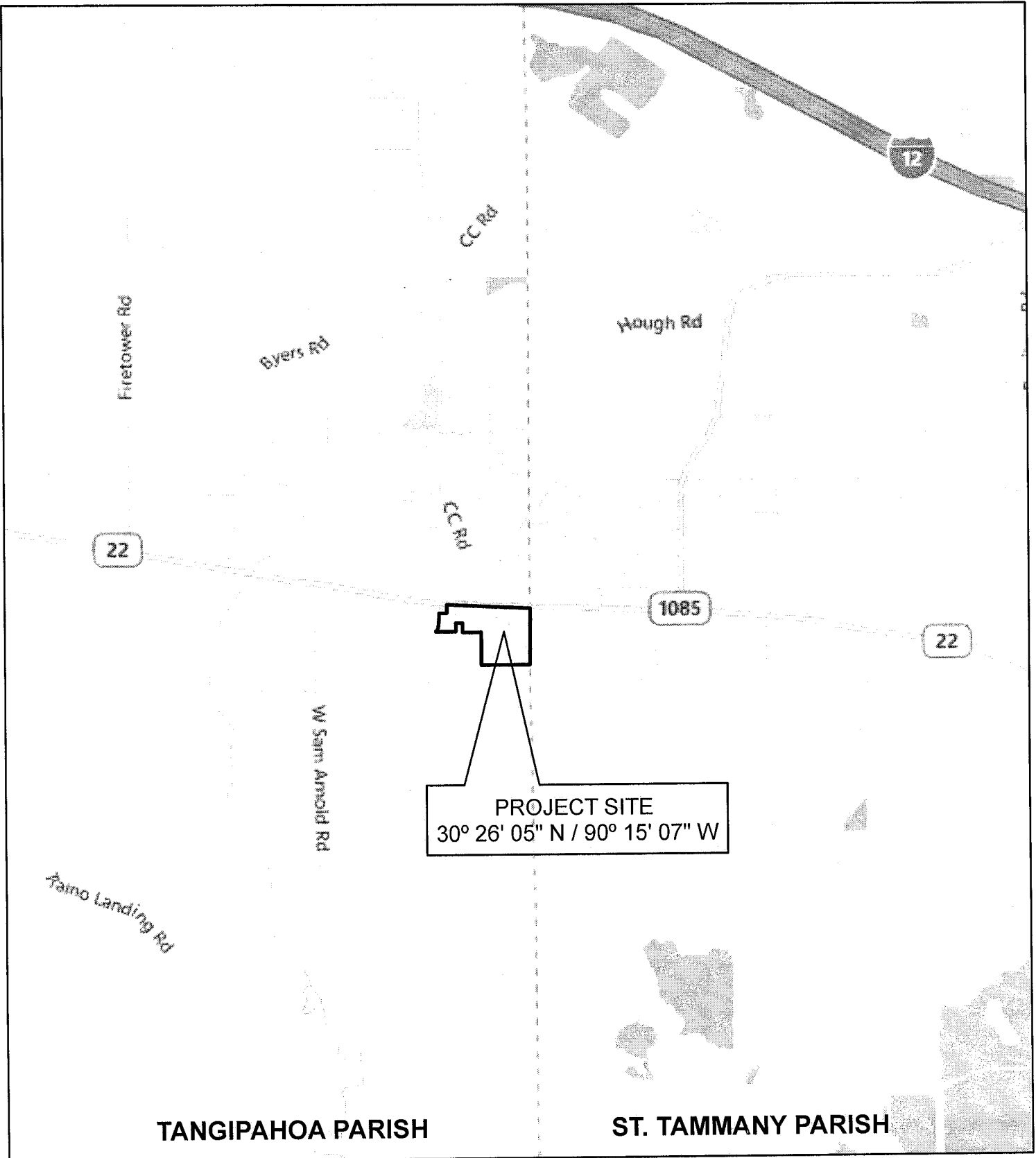
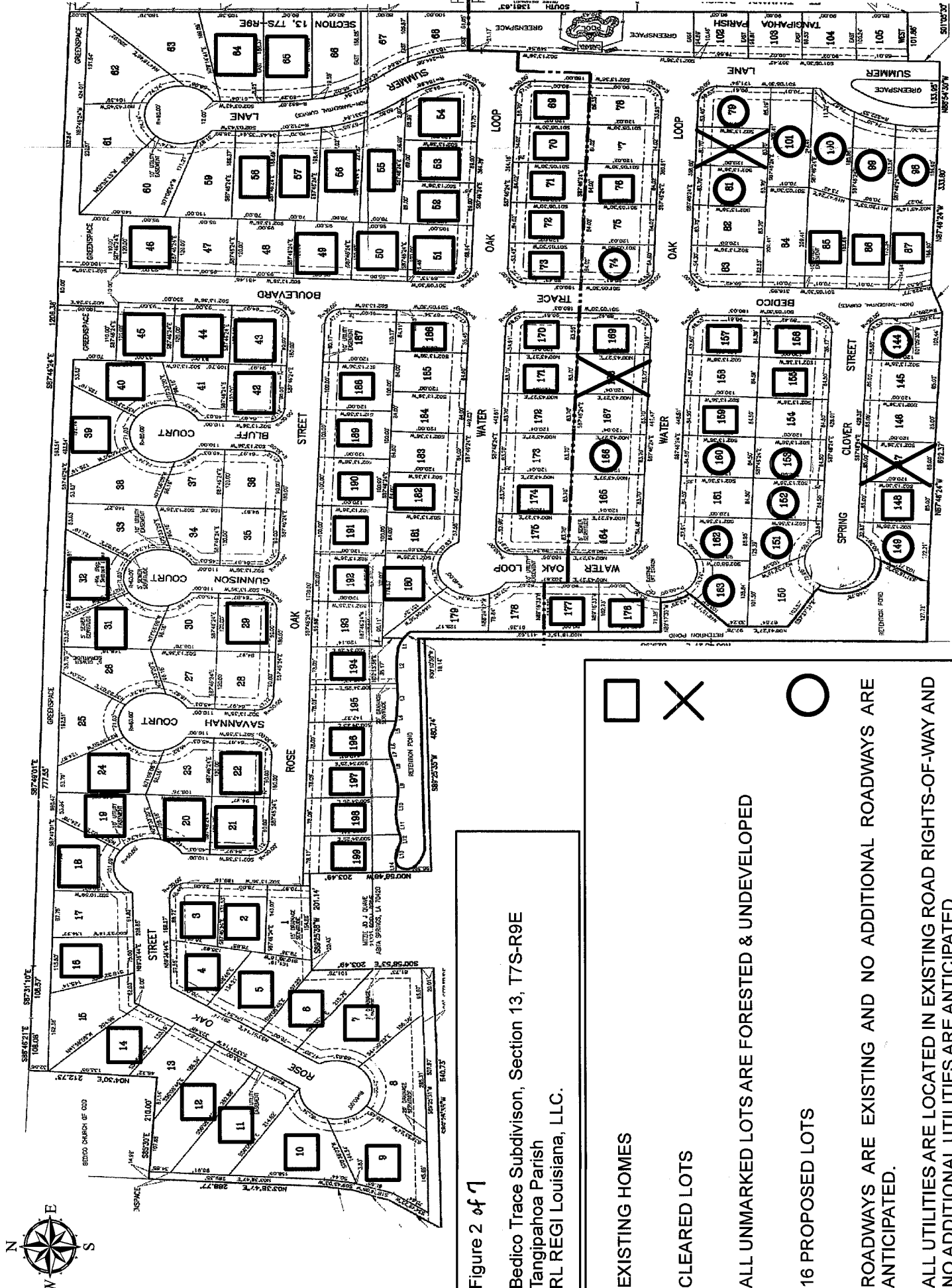


FIGURE 1 of 7

**BEDICO TRACE SUBDIVISION  
SECTION 13, T7S-R9E  
TANGIPAHOA PARISH  
RL REGI LOUISIANA, LLC**




# Bedico Trace Plan View



PHASE 1  
PHASE 2

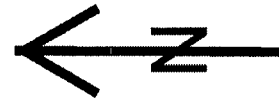
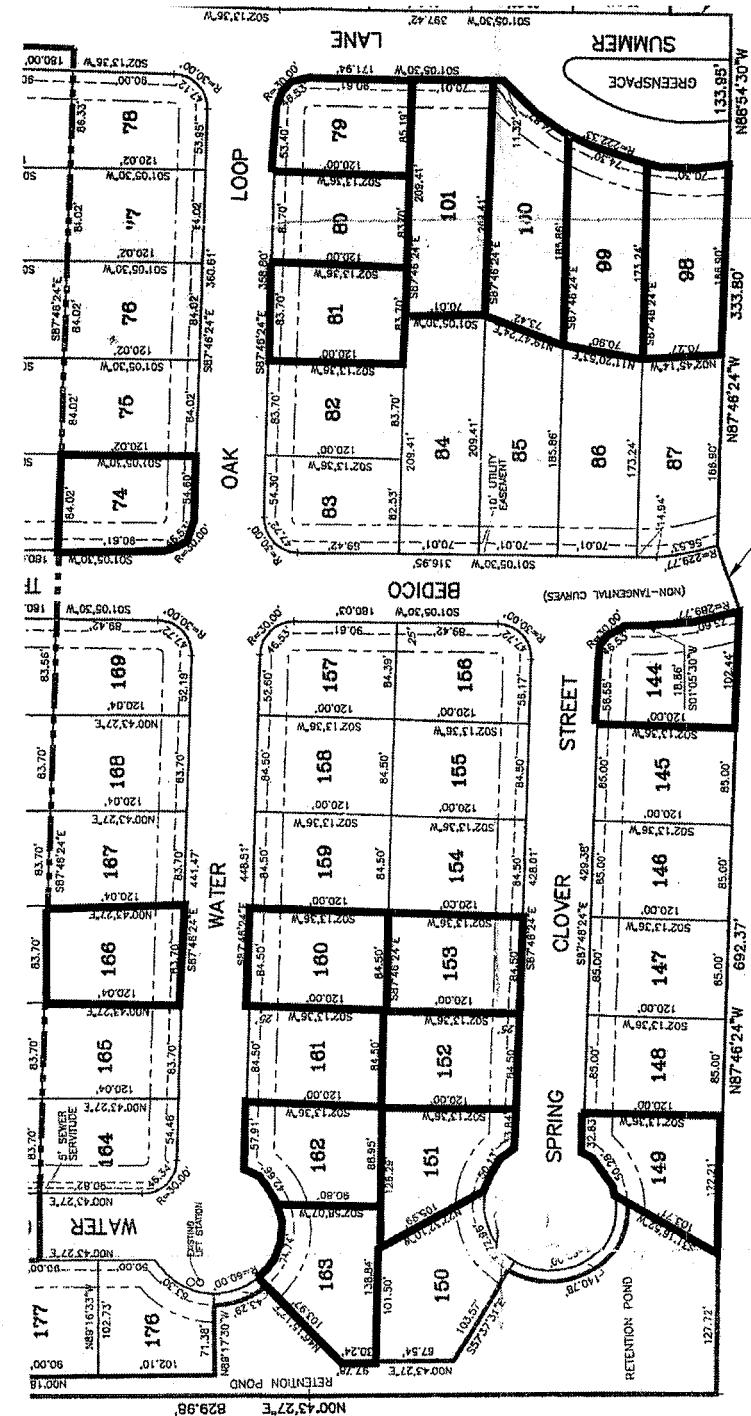
Figure 2 of 7

Bedico Trace Subdivision, Section 13, T7S-R9E  
Tangipahoa Parish  
RL REGI Louisiana, LLC.

-  EXISTING HOMES
  -  CLEARED LOTS
  -  16 PROPOSED LOTS
- ROADWAYS ARE EXISTING AND NO ADDITIONAL ROADWAYS ARE ANTICIPATED.
- ALL UTILITIES ARE LOCATED IN EXISTING ROAD RIGHTS-OF-WAY AND NO ADDITIONAL UTILITIES ARE ANTICIPATED.

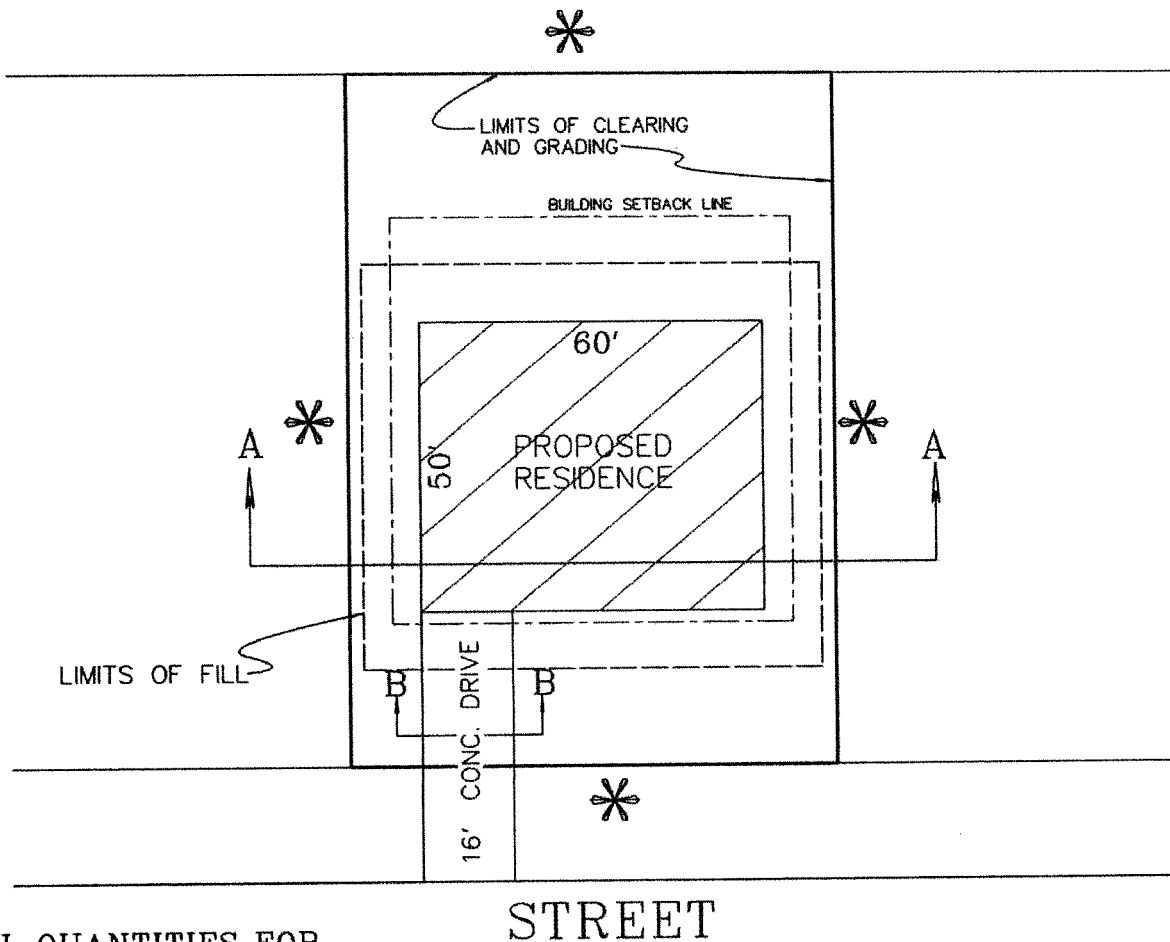
FEB 20 2013

**BEDICO TRACE PROPOSED LOTS TO BE DEVELOPED**



**FIGURE 3 of 7**  
**BEDICO TRACE SUBDIVISION**  
**SECTION 13, T7S-R9E**  
**TANGIPAHOA PARISH**  
**RL REGI LOUISIANA, LLC**

**16 LOTS PROPOSED TO BE DEVELOPED OUTLINED IN BLACK**



**FILL QUANTITIES FOR CONSTRUCTION OF HOME**

FILL = 151 cy/lot  
 CONC. = 78 cy/lot

**FILL QUANTITIES FOR YARD DRAINAGE**

FILL = VARIES/lot

**TOTAL FILL QUANTITIES**

FILL IN WETLANDS = +/- 1535 cy. yd.  
 FILL IN NON WET = +/- 1732 cy. yd.

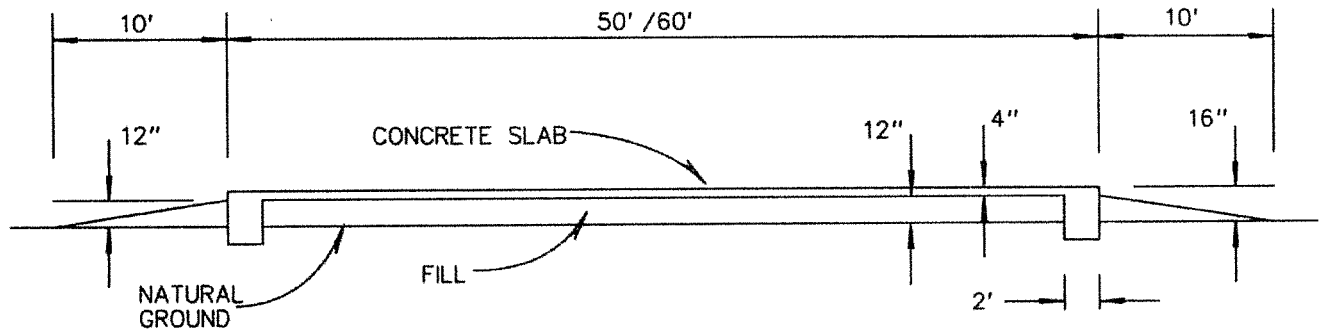
\* NOTE: LOT DIMENSIONS VARY  
 REFER TO FIGURE #3

BEDICO TRACE  
 SECTION 13, T-7-S, R-9-E,  
 TANGIPAOHA PARISH, LA.

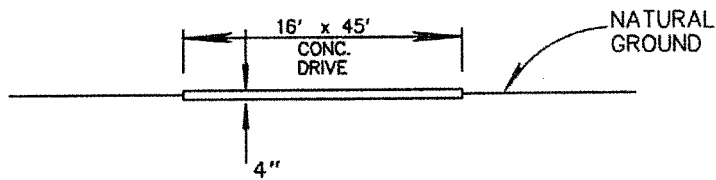
**TYPICAL PLAN VIEW**

SCALE:	1" = 30'	DATE:	07-31-12
DRAWN:	DRJ	JOB NO.:	12-152
REVISED:			

FIGURE 4 OF 7



SECTION A-A



SECTION B-B

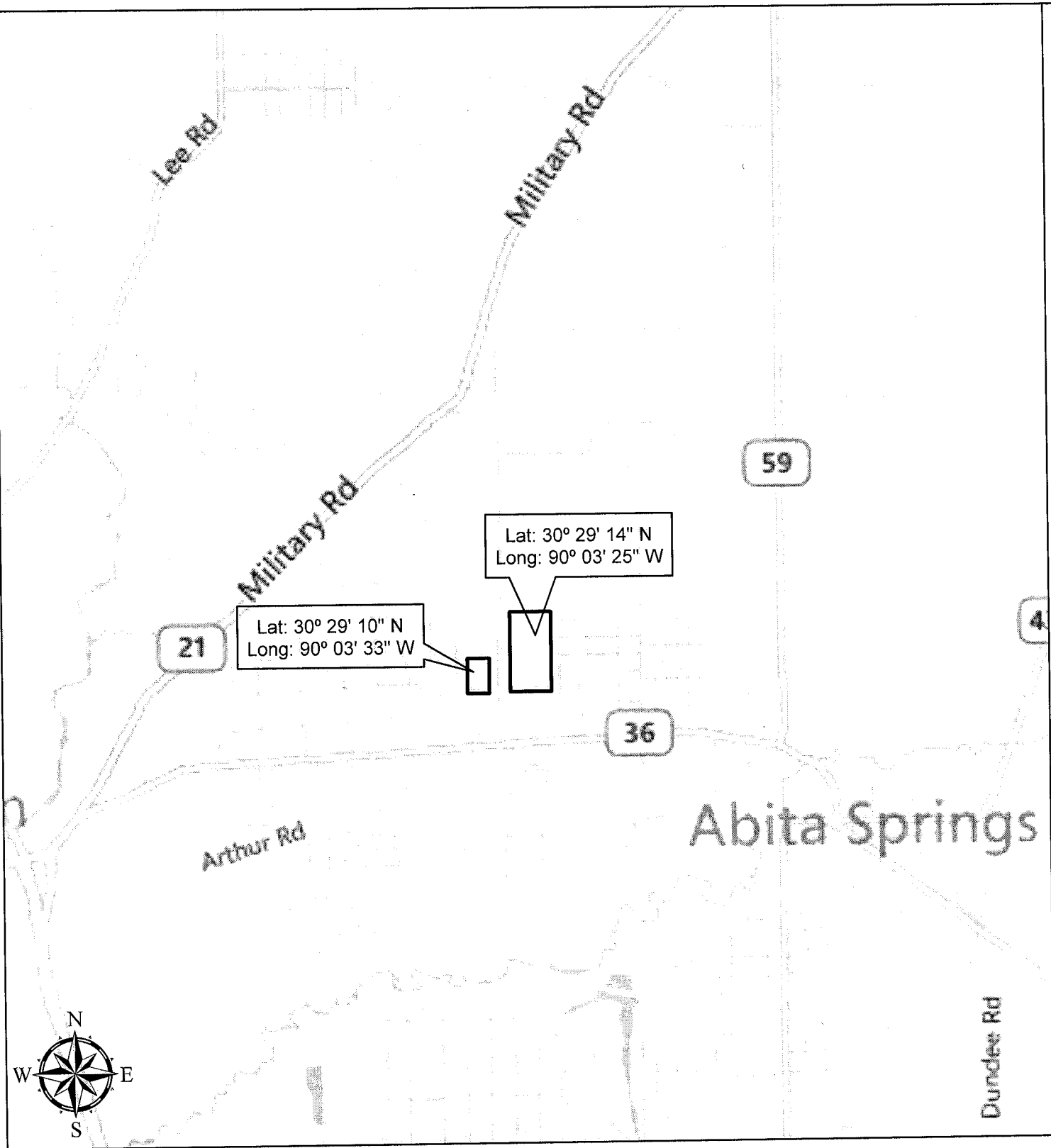
BEDICO TRACE  
 SECTION 13, T-7-S, R-9-E,  
 TANGIPAHOA PARISH, LA.

TYPICAL SECTION VIEW

SCALE:	N.T.S.	DATE:	07-31-12
DRAWN:	DRJ	JOB NO.:	12-152
REVISED:			

FIGURE 5 of 7

Vicinity Map for Proposed Mitigation Site - Section 36, T6S-R11E,  
St. Tammany Parish, Louisiana

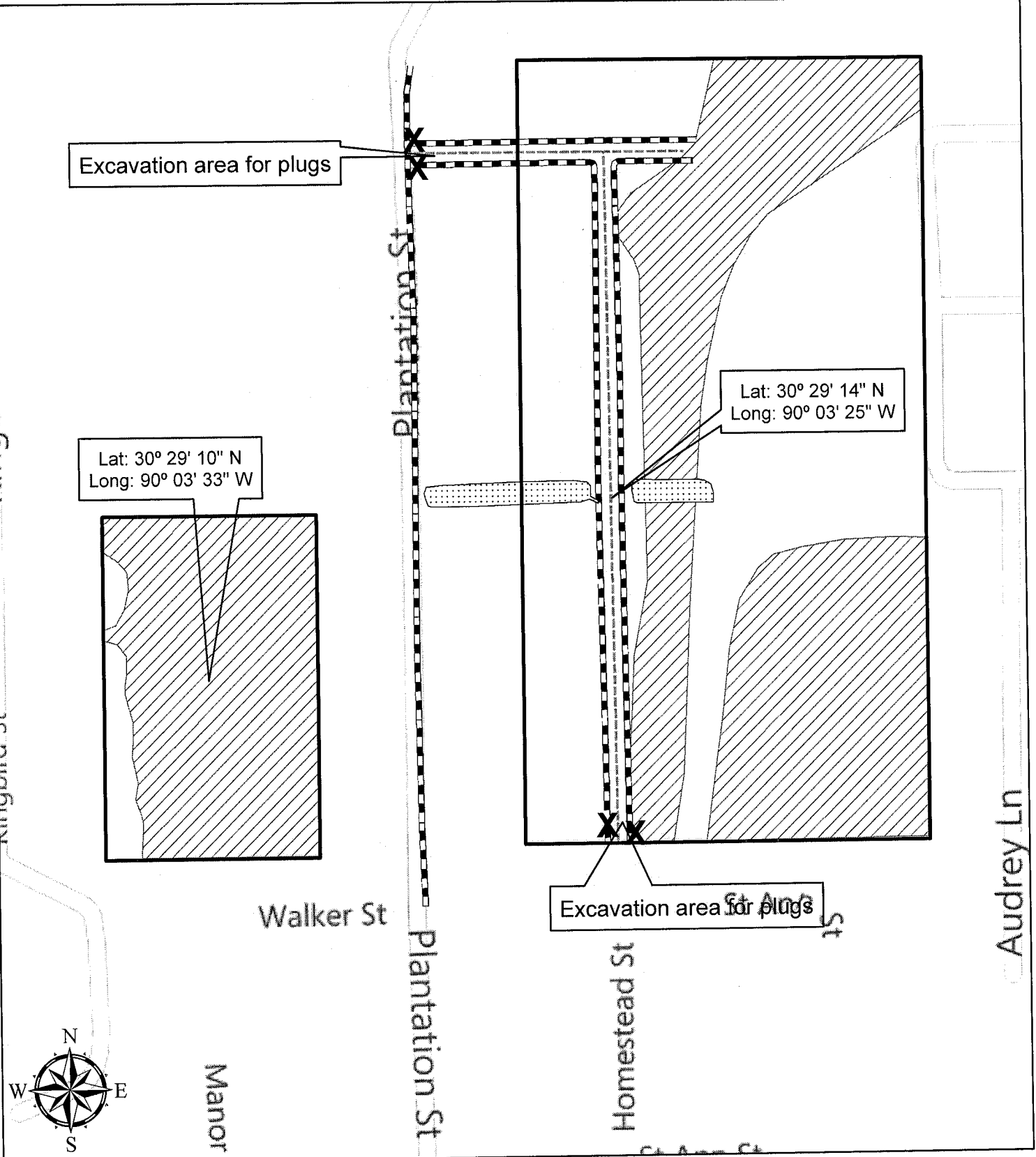


Total property acreage to  
be placed under  
servitude- 37.1ac

Wetland acreage on  
property - 17.8ac

FIGURE 6 of 7  
BEDICO TRACE SUBDIVISION  
SECTION 13, T7S-R9E  
TANGIPAHOA PARISH  
RL REGI LOUISIANA, LLC

Proposed Mitigation Site - Section 36, T6S-R11E, St. Tammany Parish, Louisiana



- Wetlands
- Existing sandy clay roadbed
- Ditches
- Detention Ponds
- Ditch plug locations

Total property acreage to be placed under servitude- 37.1ac

Wetland acreage on property - 17.8ac

FIGURE 7 of 7

**BEDICO TRACE SUBDIVISION**  
**SECTION 13, T7S-R9E**  
**TANGIPAHOA PARISH**  
**RL REGI LOUISIANA, LLC**