

**ELOS**

environmental  
43177 East Pleasant Ridge Road  
Hammond, Louisiana 70403  
P. 985-662-5501, F. 985-662-5504

0 750 1,500 3,000 Feet



Figure 1: Topo/Vicinity Map

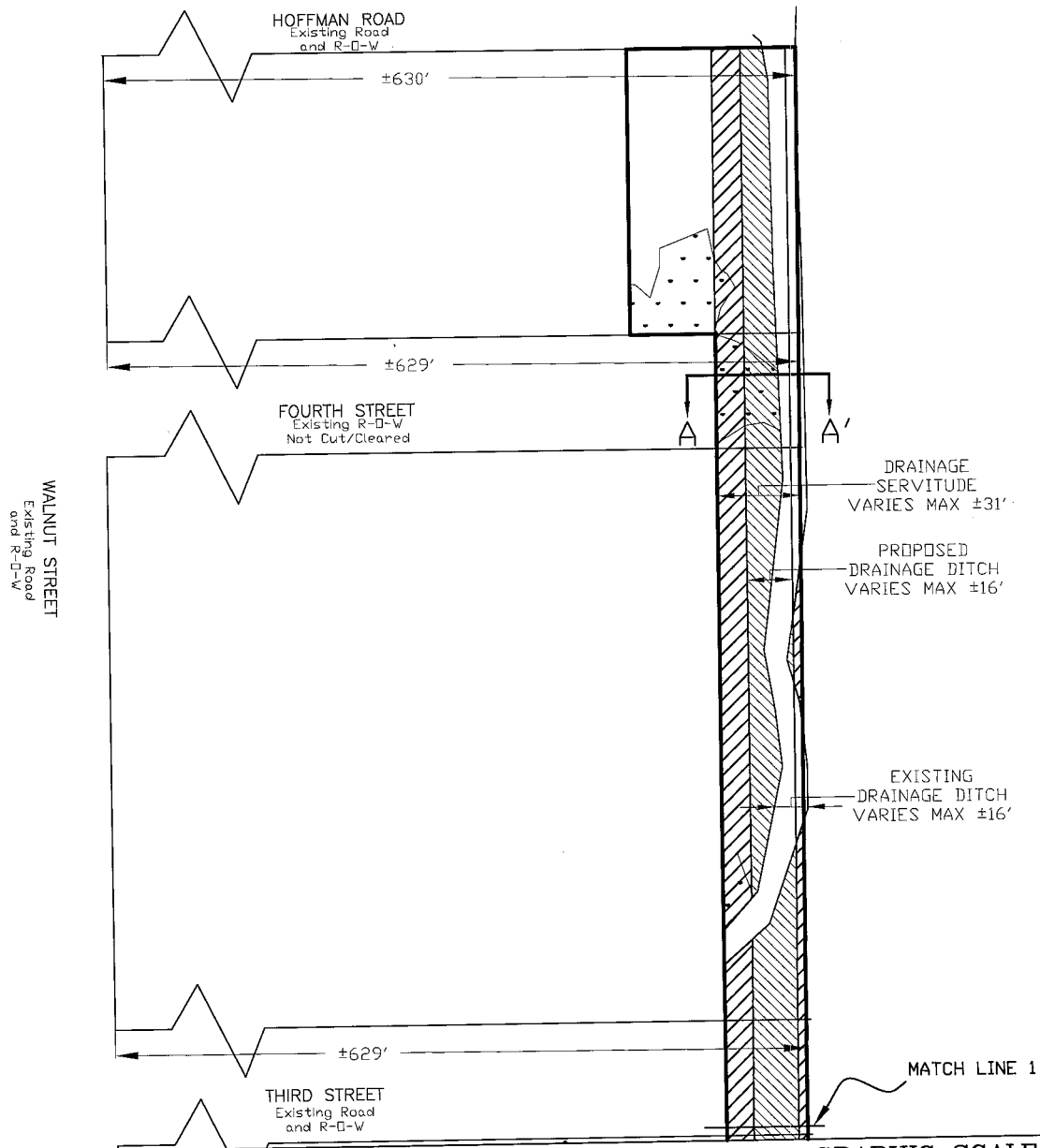
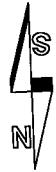
**St. Tammany Drainage District # 5  
Hoffman Road**

**Legend:**

Proposed Site Location

Map prepared from public and proprietary spatial data. ELOS Environmental, LLC does not warrant its accuracy or completeness. This map should not be used to establish legal boundaries or specific locations.

# Typical Plan View Section A



EXISTING DITCH WILL BE MAINTENANCE DREDGED AS NEEDED TO ENSURE OPTIMAL FLOW. IN SECTION A (APPROX. HOFFMAN ROAD TO THIRD STREET) EXISTING DITCH WILL BE CLEANED/DESAGGED AND STRAIGHTENED. IN SECTIONS B AND C (APPROX. THIRD STREET TO ABITA AVENUE) THE PROPOSED DITCH WILL BE DREDGED AS THERE IS NO EXISTING DITCH. SECTIONS B AND C WILL NOT REQUIRE AN ACCESS TRAIL AS THE EXISTING SECOND STREET RIGHT-OF-WAY WILL BE USED TO ACCESS THE PROPOSED DITCH.

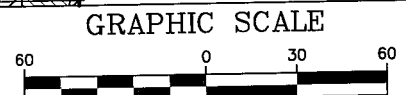
ALL DREDGED MATERIAL FROM THE PROPOSED CUT WILL BE TRANSPORTED OFF SITE AND PLACED IN A NON-WET AREA.

ALL CLEARED VEGETATIVE MATERIAL WILL BE TRANSPORTED OFF SITE AND PLACED IN A NON-WET AREA.

THESE DRAWINGS ARE ONLY INTENDED FOR THE JOINT PERMIT APPLICATION PROCESS.

THESE DRAWINGS ARE NOT INTENDED FOR ENGINEERING, CONTRACTING, SURVEYING, PARISH APPROVAL, OR ANY OTHER USES.

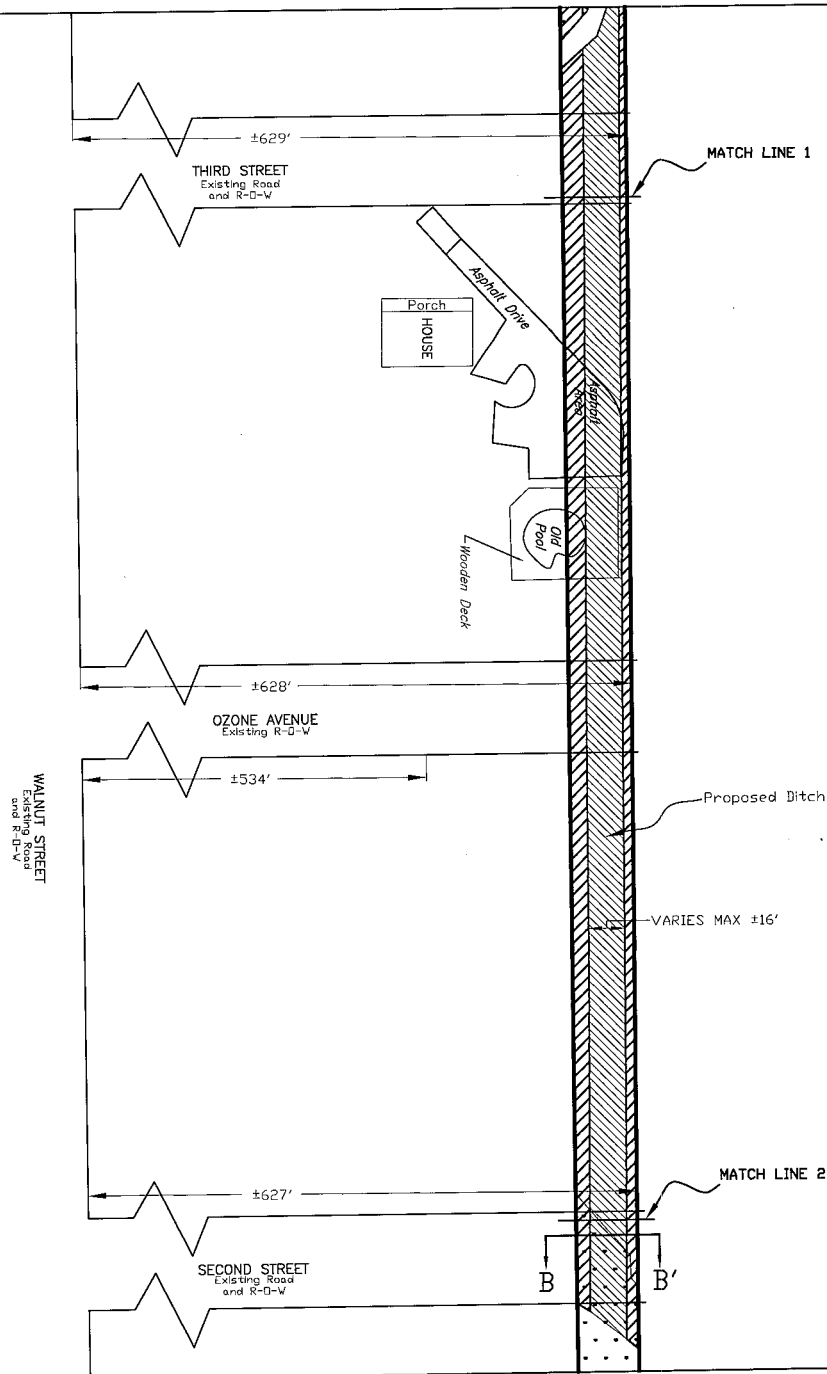
- Proposed Cut
- Survey Limits
- Existing Wetlands  
MVN-2012-01784-SA
- Excavation and Backfill  
as Needed for Removal  
of Vegetation



( IN FEET )  
1 inch = 60 ft.

St. Tammany Drainage District #5 St. Tammany Parish		
Typical Plan View		
KREBS LaSALLE ENVIRONMENTAL, LLC		
WETLAND DELINEATION	PERMIT APPLICATIONS	ENDANGERED SPECIES SURVEY
FOREST MANAGEMENT	ENVIRONMENTAL MONITORING	MITIGATION CONSULTATION
1580 W Causeway Approach, Ste 2B, Mandeville, LA 70471 Phone 985-237-8058		
DATE: 10/17/12	SCALE: 1"=60'	FIGURE 2
DRAWN BY: ZAC		

# Typical Plan View Section B



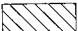

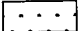
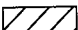
EXISTING DITCH WILL BE MAINTENANCE DREDGED AS NEEDED TO ENSURE OPTIMAL FLOW. IN SECTION A (APPROX. HOFFMAN ROAD TO THIRD STREET) EXISTING DITCH WILL BE CLEANED/DESAGGED AND STRAIGHTENED. IN SECTIONS B AND C (APPROX. THIRD STREET TO ABITA AVENUE) THE PROPOSED DITCH WILL BE DREDGED AS THERE IS NO EXISTING DITCH. SECTIONS B AND C WILL NOT REQUIRE AN ACCESS TRAIL AS THE EXISTING SECOND STREET RIGHT-OF-WAY WILL BE USED TO ACCESS THE PROPOSED DITCH.

ALL DREDGED MATERIAL FROM THE PROPOSED CUT WILL BE TRANSPORTED OFF SITE AND PLACED IN A NON-WET AREA.

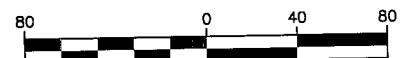
ALL CLEARED VEGETATIVE MATERIAL WILL BE TRANSPORTED OFF SITE AND PLACED IN A NON-WET AREA.

THESE DRAWINGS ARE ONLY INTENDED FOR THE JOINT PERMIT APPLICATION PROCESS.

THESE DRAWINGS ARE NOT INTENDED FOR ENGINEERING, CONTRACTING, SURVEYING, PARISH APPROVAL, OR ANY OTHER USES.

-  Proposed Cut
-  Survey Limits
-  Existing Wetlands MVN-2012-01784-SA
-  Excavation and Backfill as Needed for Removal of Vegetation

## GRAPHIC SCALE



( IN FEET )  
1 inch = 80 ft.

St. Tammany Drainage District #5  
St. Tammany Parish

Typical Plan View

KREBS LaSALLE ENVIRONMENTAL, LLC

WETLAND DELINEATION • PERMIT APPLICATIONS • ENDANGERED SPECIES SURVEY

FOREST MANAGEMENT • ENVIRONMENTAL MONITORING • MITIGATION CONSULTATION

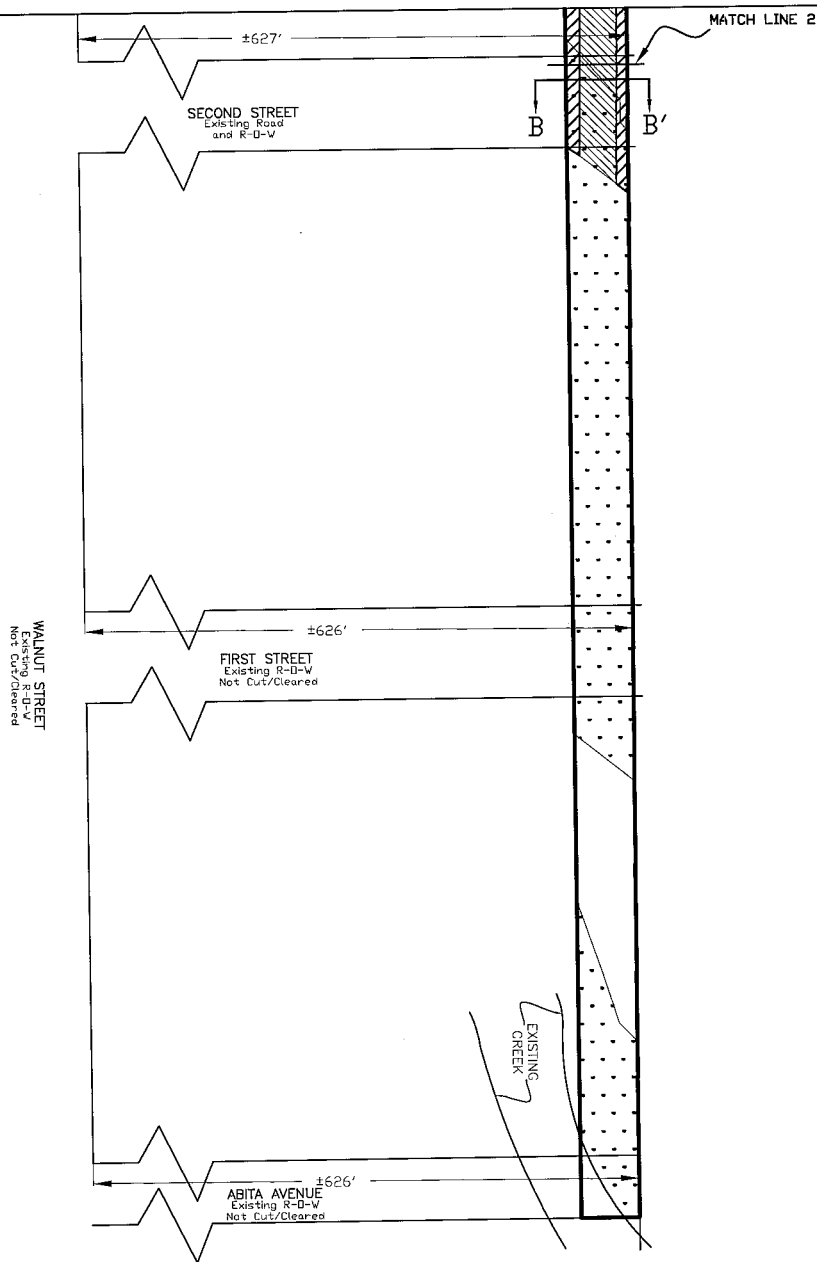
1580 W Causeway Approach, Ste 2B, Mandeville, LA 70471 Phone 985-237-6056

DATE: 10/17/12

SCALE: 1:80  
DRAWN BY: ZAC

FIGURE 3

# Typical Plan View Section C



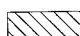
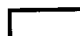
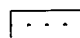
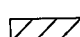
EXISTING DITCH WILL BE MAINTENANCE DREDGED AS NEEDED TO ENSURE OPTIMAL FLOW. IN SECTION A (APPROX. HOFFMAN ROAD TO THIRD STREET) EXISTING DITCH WILL BE CLEANED/DESAGGED AND STRAIGHTENED. IN SECTIONS B AND C (APPROX. THIRD STREET TO ABITA AVENUE) THE PROPOSED DITCH WILL BE DREDGED AS THERE IS NO EXISTING DITCH. SECTIONS B AND C WILL NOT REQUIRE AN ACCESS TRAIL AS THE EXISTING SECOND STREET RIGHT-OF-WAY WILL BE USED TO ACCESS THE PROPOSED DITCH.

ALL DREDGED MATERIAL FROM THE PROPOSED CUT WILL BE TRANSPORTED OFF SITE AND PLACED IN A NON-WET AREA.

ALL CLEARED VEGETATIVE MATERIAL WILL BE TRANSPORTED OFF SITE AND PLACED IN A NON-WET AREA.

THESE DRAWINGS ARE ONLY INTENDED FOR THE JOINT PERMIT APPLICATION PROCESS.

THESE DRAWINGS ARE NOT INTENDED FOR ENGINEERING, CONTRACTING, SURVEYING, PARISH APPROVAL, OR ANY OTHER USES.

-  Proposed Cut
-  Survey Limits
-  Existing Wetlands
-  Excavation and Backfill as Needed for Removal of Vegetation

## GRAPHIC SCALE



( IN FEET )  
1 inch = 80 ft.

**St. Tammany Drainage District #5**  
**St. Tammany Parish**

Typical Plan View

**KREBS LaSALLE ENVIRONMENTAL, LLC**

VETLAND DELINEATION • PERMIT APPLICATIONS • ENDANGERED SPECIES SURVEY

FOREST MANAGEMENT • ENVIRONMENTAL MONITORING • MITIGATION CONSULTATION

1580 W Causeway Approach, Ste 2B, Mandeville, LA 70471 Phone 985-237-6056

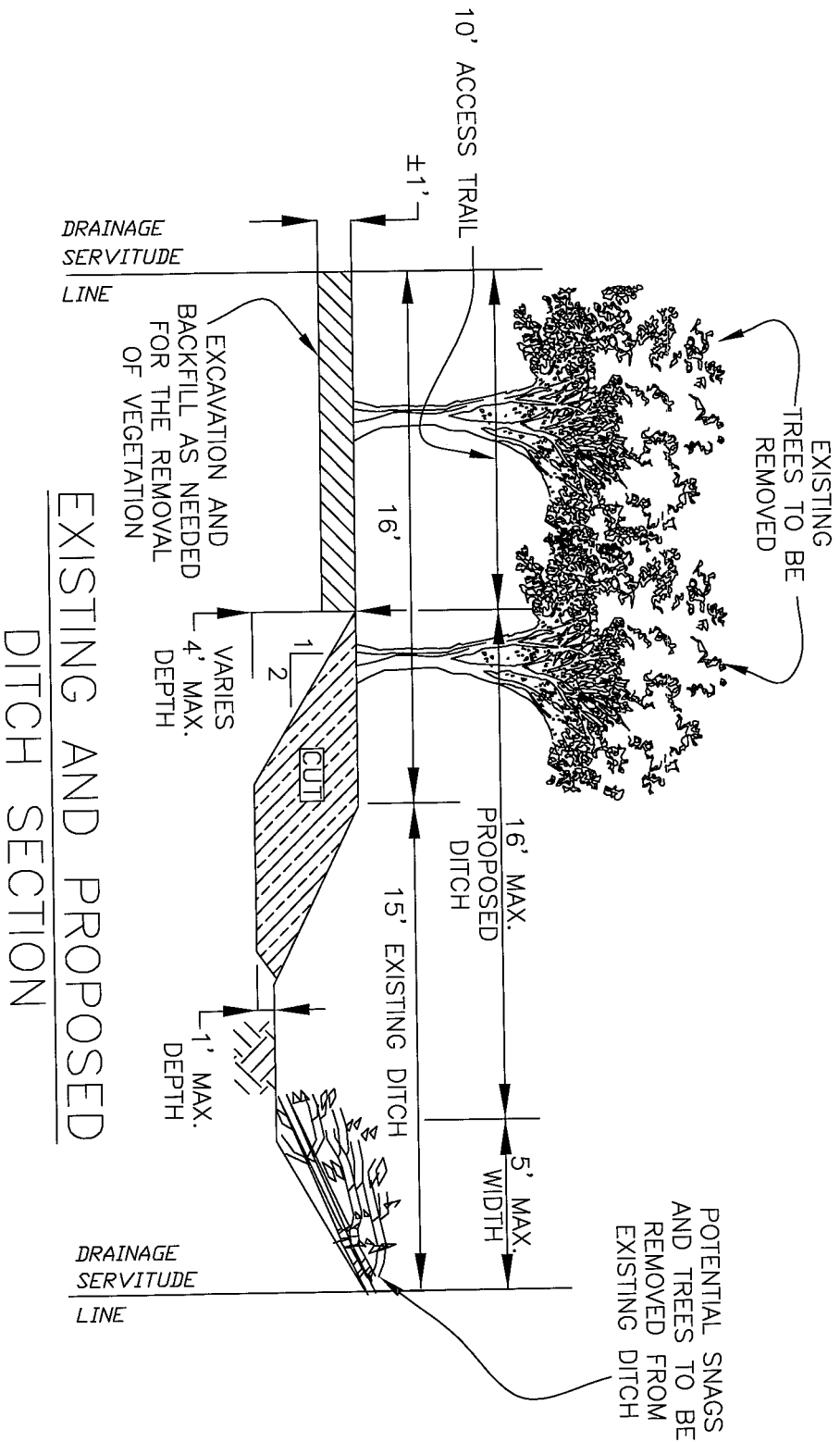
DATE: 10/17/12

SCALE: 1:80

DRAWN BY: ZAC

**FIGURE 4**

# Cross Section A-A'



St. Tammany Drainage District #5  
St. Tammany Parish

Cross Section A

KREBS LASALLE ENVIRONMENTAL, LLC

VEGETATION REMOVAL REPORT APPLICATIONS ENGINEERING DESIGN SURVEY  
PROJECT MANAGER: ENVIRONMENTAL MONITORING, KATYVIA CONSULTING  
1800 W. Cemetery Approach, Ste 20, Mandeville, LA 70471 Phone 815-217-6006

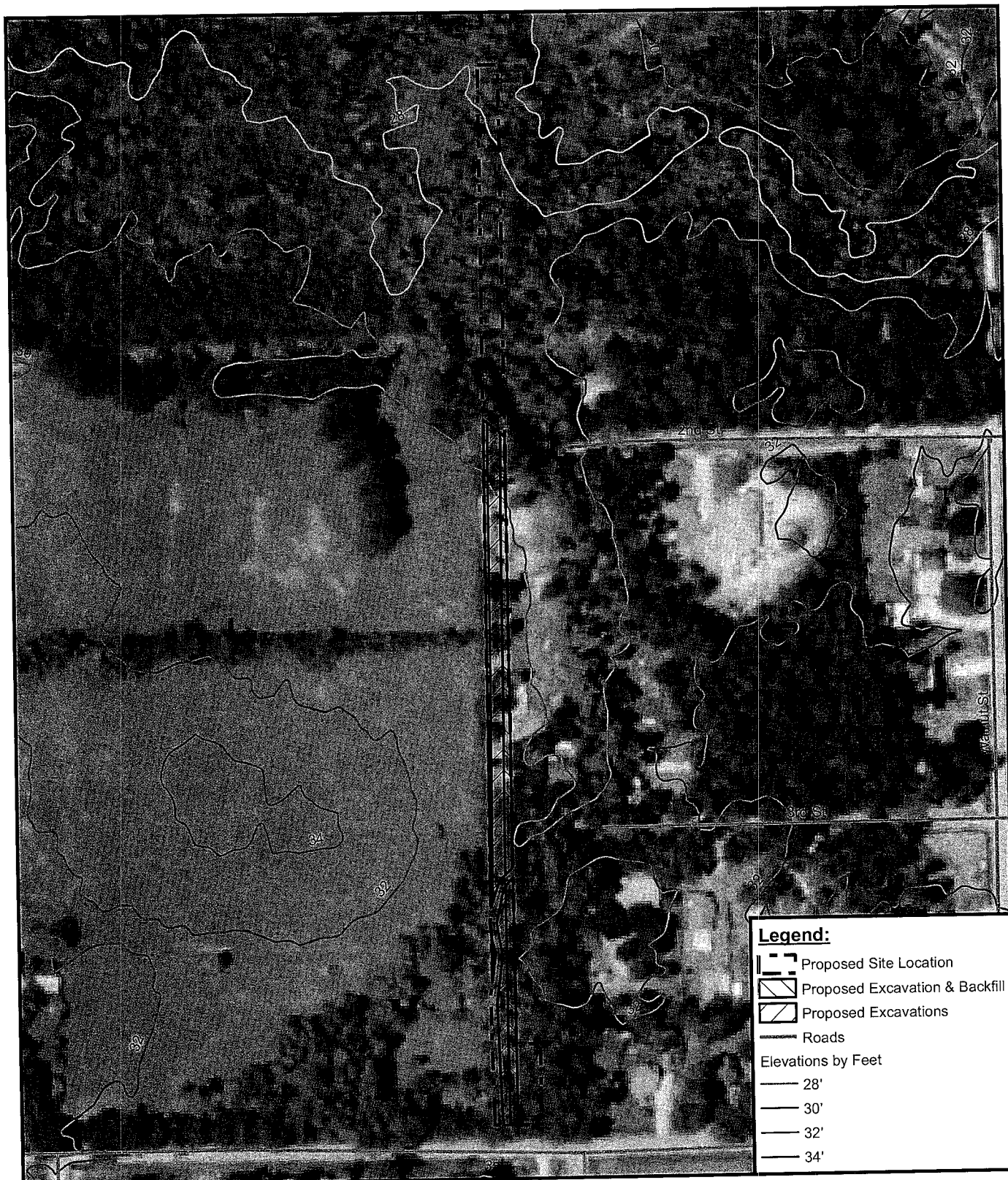
DATE: 10/17/12 SCALE: 1"=5' DRAWN BY: RBL FIGURE 5

Diagram illustrating a proposed ditch section with dimensions and labels:





- Top Labels:** DRAINAGE SERVITUDE LINE, EXCAVATION AND BACKFILL AS NEEDED FOR THE REMOVAL OF VEGETATION.
- Left Side Labels:** PROPOSED NEW DITCH SECTION, VARIES 4' MAX. DEPTH, VARIES.
- Right Side Labels:** EXISTING TREES TO BE REMOVED, 5' MAX. WIDTH.
- Center Labels:** 16' MAX. PROPOSED DITCH, CUT.
- Bottom Labels:** DRAINAGE SERVITUDE LINE, EXCAVATION AND BACKFILL AS NEEDED FOR THE REMOVAL OF VEGETATION.

St. Tammany Drainage District #5  
 St. Tammany Parish  
 Cross Section B  
 KREBS L&S/LE ENVIRONMENTAL, LLC  
 WILCOX RESOLUTION    POINT RELOCATIONS    DOWNSTREAM SEDIMENT SURVEY  
 PROJECT MANAGER    ENVIRONMENTAL MONITORING    ATTENTION CONSULTANTS  
 1580 W. Cadenberry Approach, Suite 283, Mandeville, LA 70471 Phone 985-237-8558  
 DATE: 10/17/12    SCALE: 1"= 15'    DRAWN BY: RE    FIGURE 6


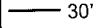
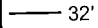




**Legend:**

-  Proposed Site Location
-  Proposed Excavation & Backfill
-  Proposed Excavations
-  Roads

**Elevations by Feet**

-  28'
-  30'
-  32'
-  34'

**ELOS**

**environmental**  
 43177 East Pleasant Ridge Road  
 Hammond, Louisiana 70403  
 P. 985-662-5501, F. 985-662-5504

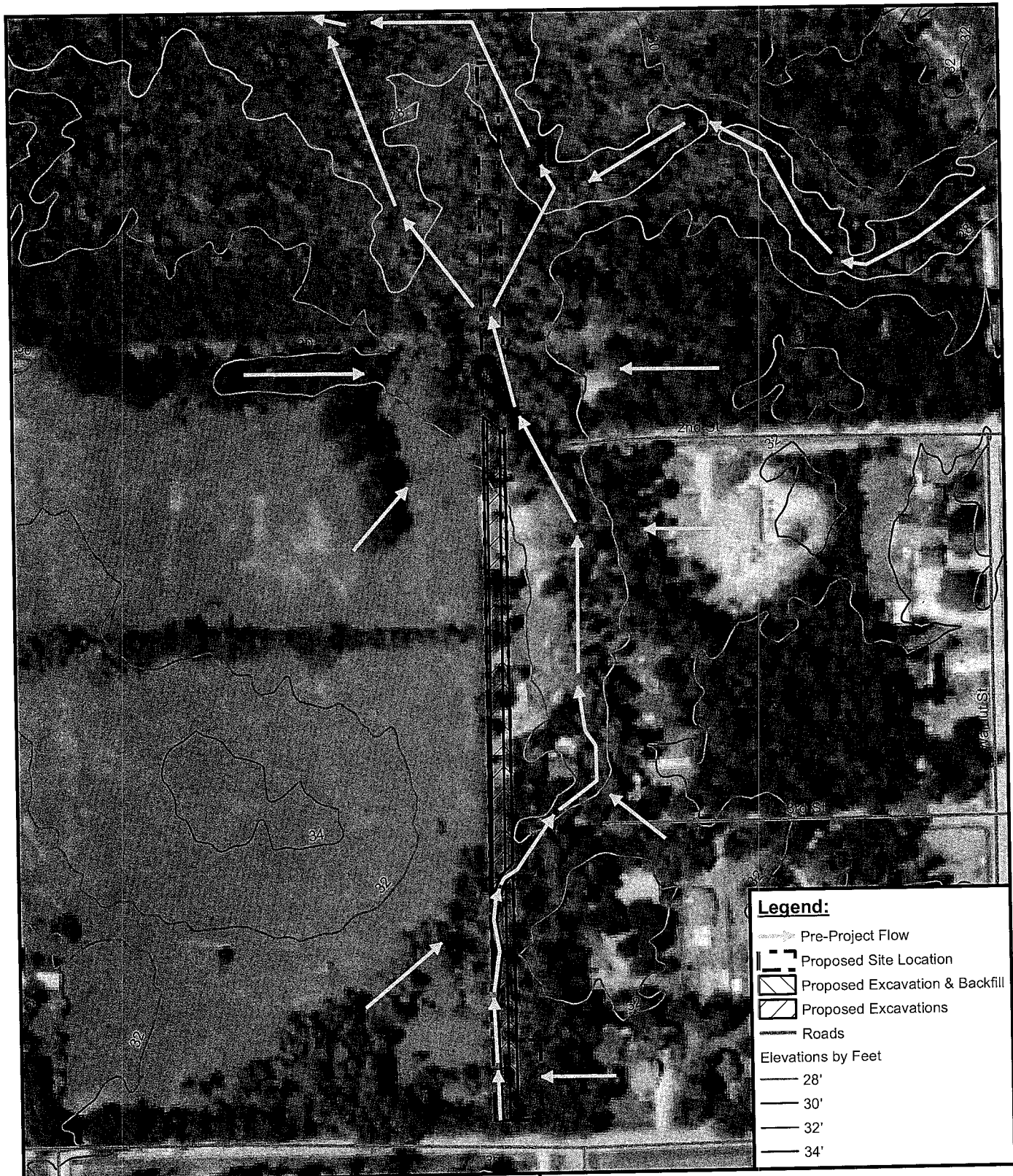
0 50 100 200 Feet



Figure 7: LIDAR Map

**St. Tammany Drainage District # 5  
 Hoffman Road**

Map prepared from public and proprietary spatial data. ELOS Environmental, LLC does not warrant its accuracy or completeness. This map should not be used to establish legal boundaries or specific locations.



**ELOS**

environmental  
43177 East Pleasant Ridge Road  
Hammond, Louisiana 70403  
P. 985-662-5501, F. 985-662-5504

0 50 100 200 Feet

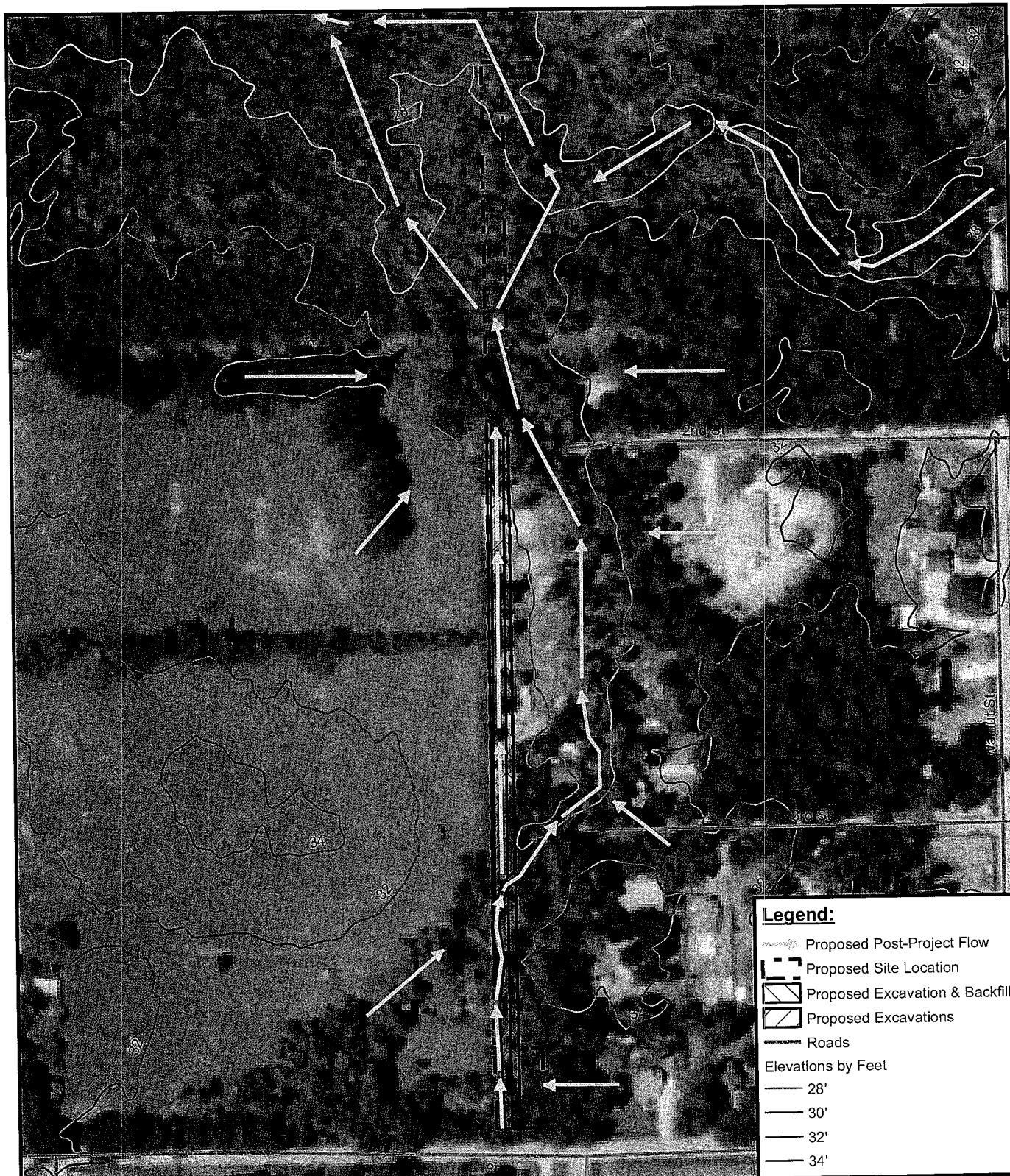


Figure 8: Pre-Project Flow

**St. Tammany Drainage District # 5  
Hoffman Road**

Map prepared from public and proprietary spatial data. ELOS Environmental, LLC does not warrant its accuracy or completeness. This map should not be used to establish legal boundaries or specific locations.





**Legend:**

- Proposed Post-Project Flow
- Proposed Site Location
- Proposed Excavation & Backfill
- Proposed Excavations
- Roads
- Elevations by Feet
  - 28'
  - 30'
  - 32'
  - 34'

**ELOS**  
environmental

43177 East Pleasant Ridge Road  
Hammond, Louisiana 70403  
P. 985-662-5501, F. 985-662-5504

0 50 100 200 Feet



Figure 9: Proposed Post-Project Flow

**St. Tammany Drainage District # 5  
Hoffman Road**

Map prepared from public and proprietary spatial data. ELOS Environmental, LLC does not warrant its accuracy or completeness. This map should not be used to establish legal boundaries or specific locations.