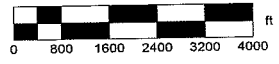


FIGURE 1. VICINITY MAP

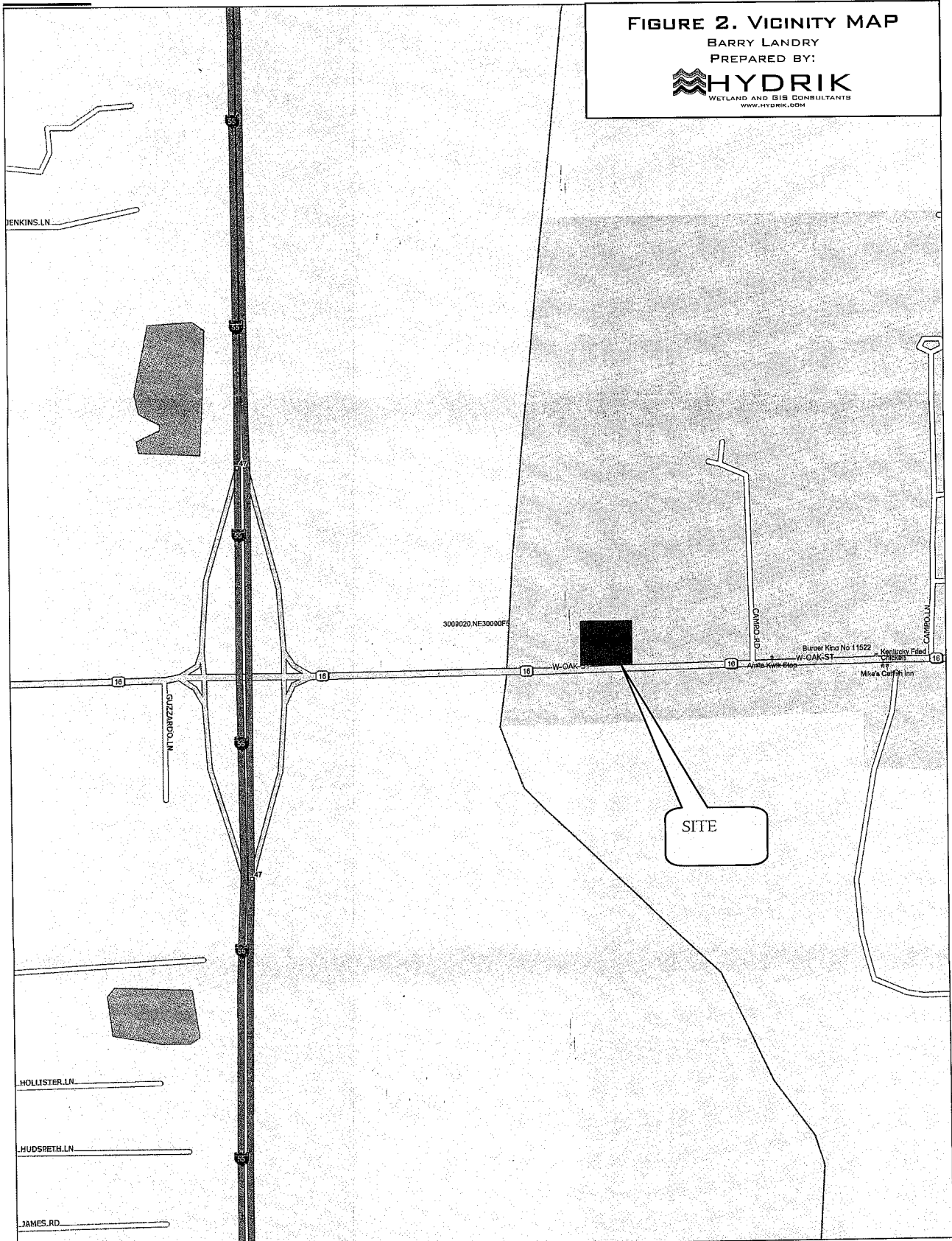
BARRY LANDRY
 PREPARED BY:



**604 W.CHARLES ST.
 HAMMOND, LA 7041
 985 429 0333**

FIGURE 2. VICINITY MAP

BARRY LANDRY
PREPARED BY:



**604 W.CHARLES ST.
HAMMOND, LA 7041
985 429 0333**

FIGURE 3. 2010 RGB

BARRY LANDRY

PREPARED BY:

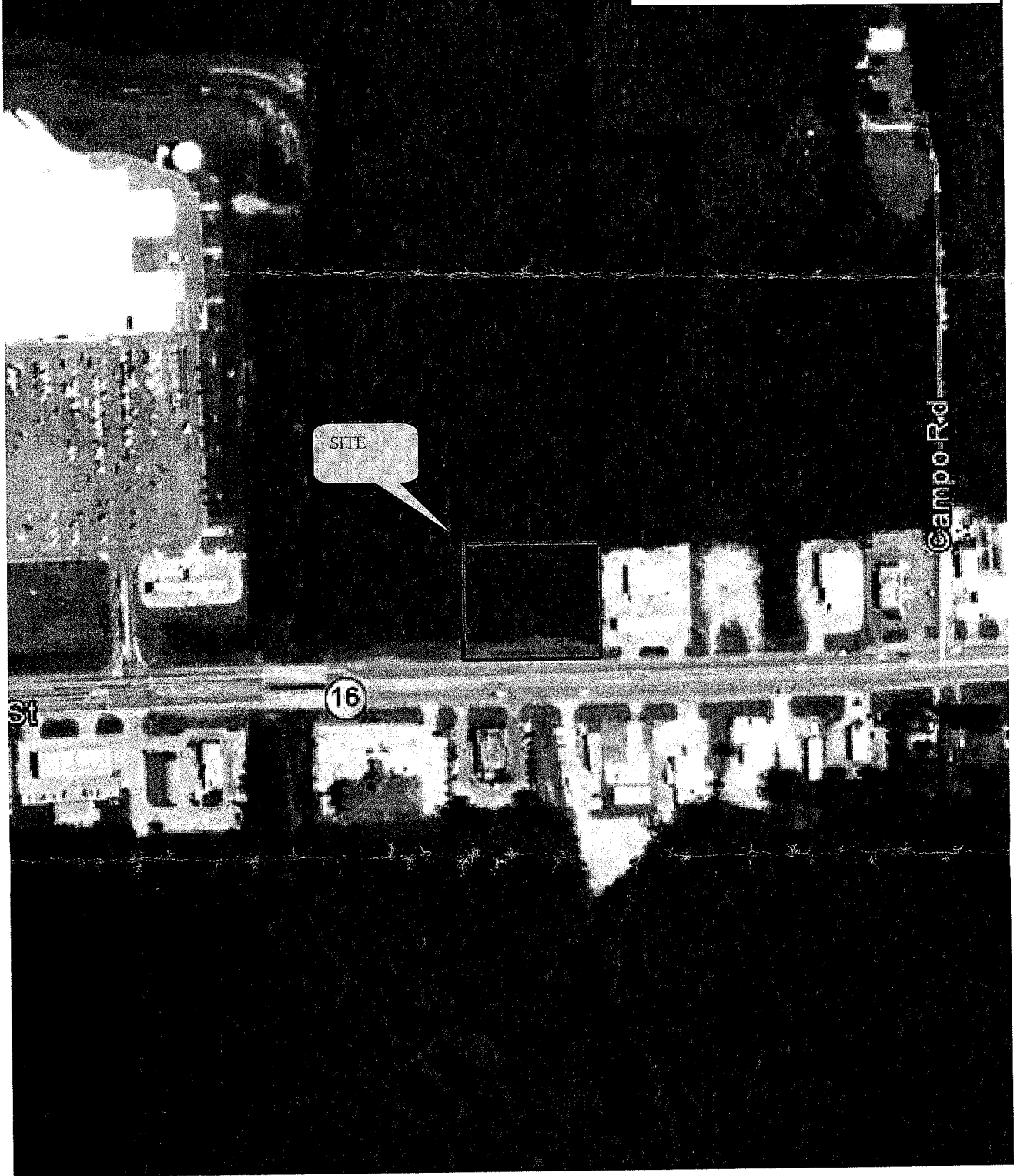
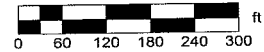
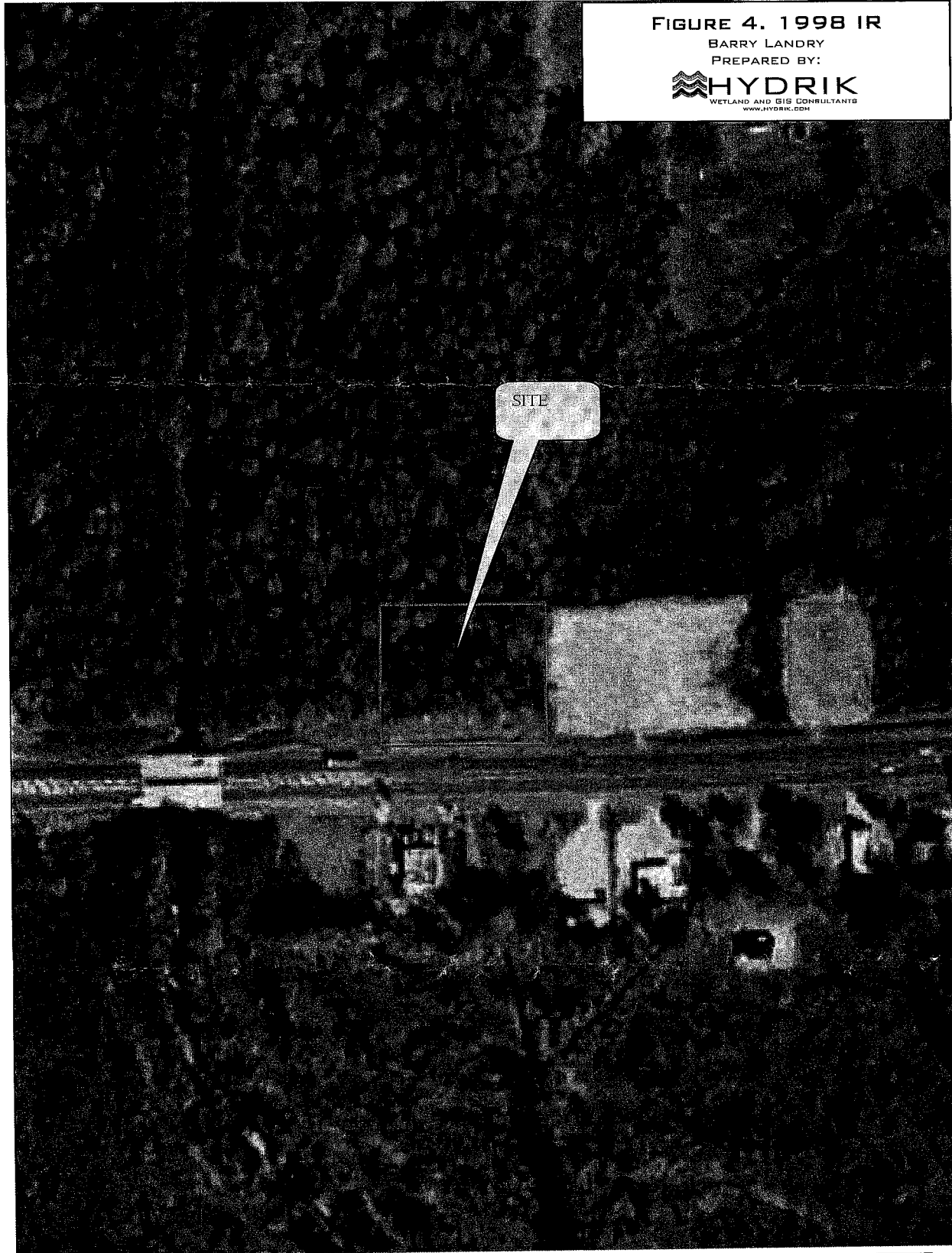


FIGURE 4. 1998 IR

BARRY LANDRY

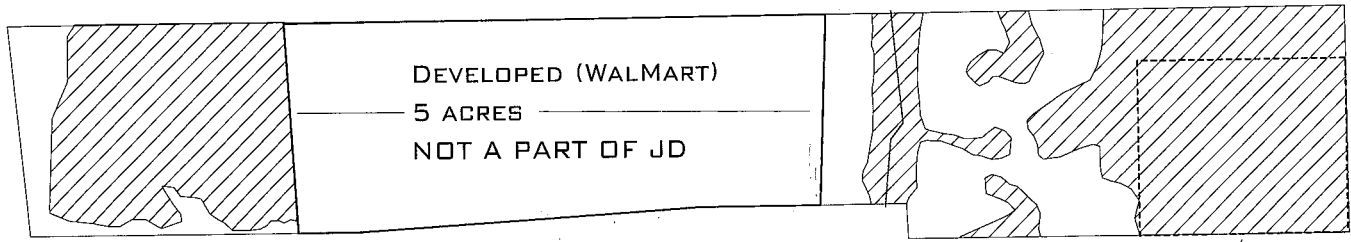
PREPARED BY:



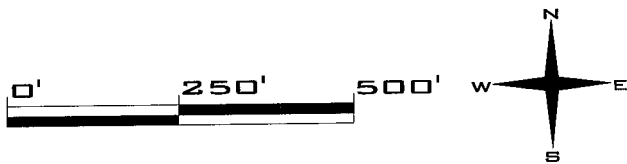
**604 W.CHARLES ST.
HAMMOND, LA 7041
985 429 0333**

**BARRY LANDRY
LA.HWY 16
SECTION 404 PERMIT APPLICATION
MIXED USE DEVELOPMENT**

**OVERALL JD MAP AND SITE LOCATION
APPROVED JD MVN 2010 01603 SG**



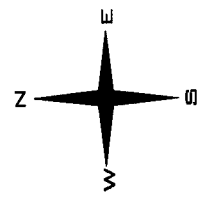
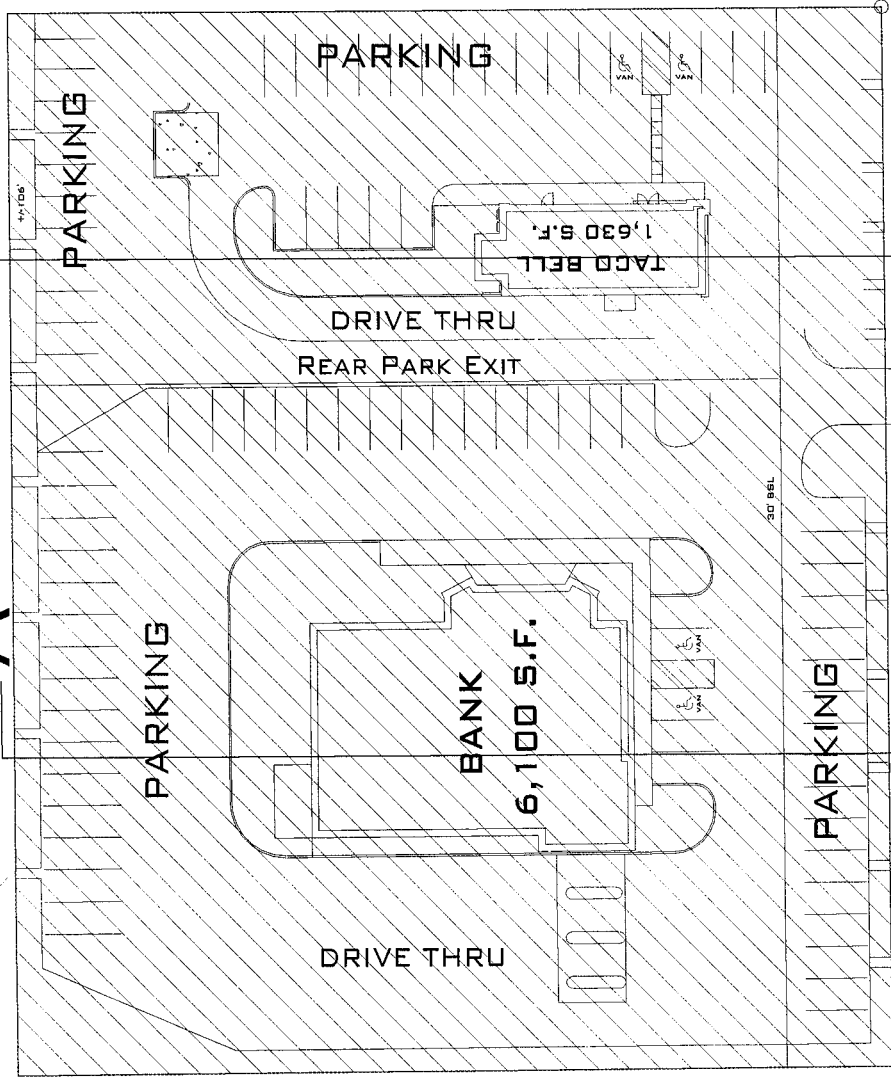
SITE LOCATION RELATIVE TO JD



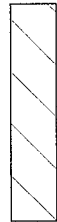
* per email dated 2/28/13

A +/- 300' B

BEEZIE LANDRY
LA.HWY 16
SECTION 404 PERMIT APPLICATION
MIXED USE DEVELOPMENT



A LA.HWY 16 B



WETLANDS TO BE IMPACTED: 1.72 ACRES
74923 SQ.FT X 6 INCHES AVG SILT FILL= 692 C.Y. CLEAN SILT
74923 SQ.FT X 6 INCHES AVG CONCRETE BASE= 692 C.Y. CONCRETE

NOTE: SITE IS WITHIN A HIGH DENSITY DEVELOPMENT CORRIDOR BORDERING LA.HWY 16 WITH WALMART TO THE WEST AND VARIOUS DEVELOPMENT SURROUNDING TO THE SOUTH AND EAST.

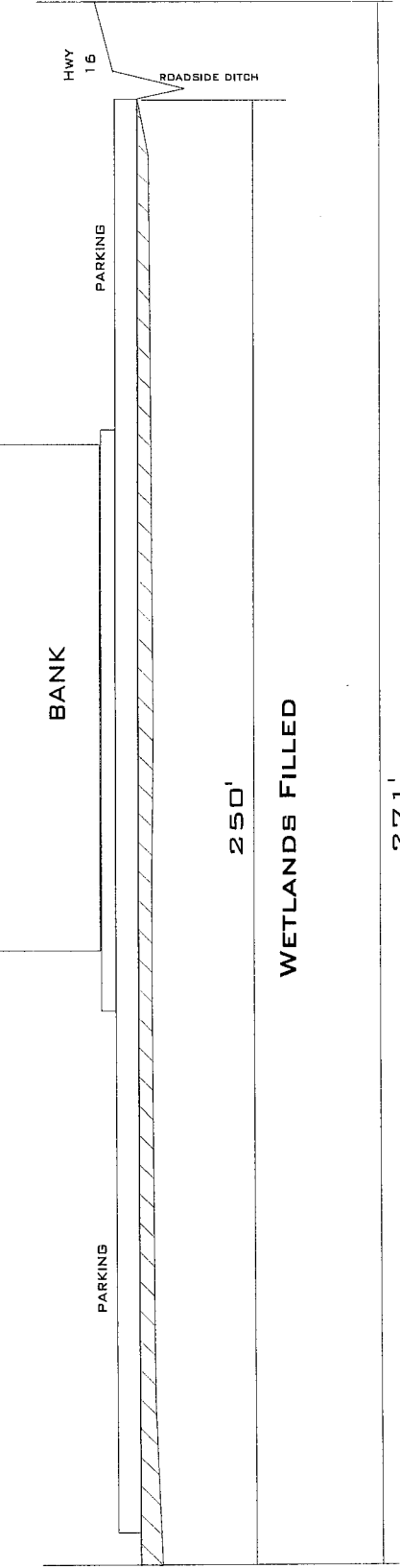
WETLAND OVERLAY AND CALCULATIONS BY:



DRAFT DESIGN BY:
DUPLANTIS DESIGN GROUP
34 LOUIS PRIMA DRIVE
COVINGTON, LA 70433

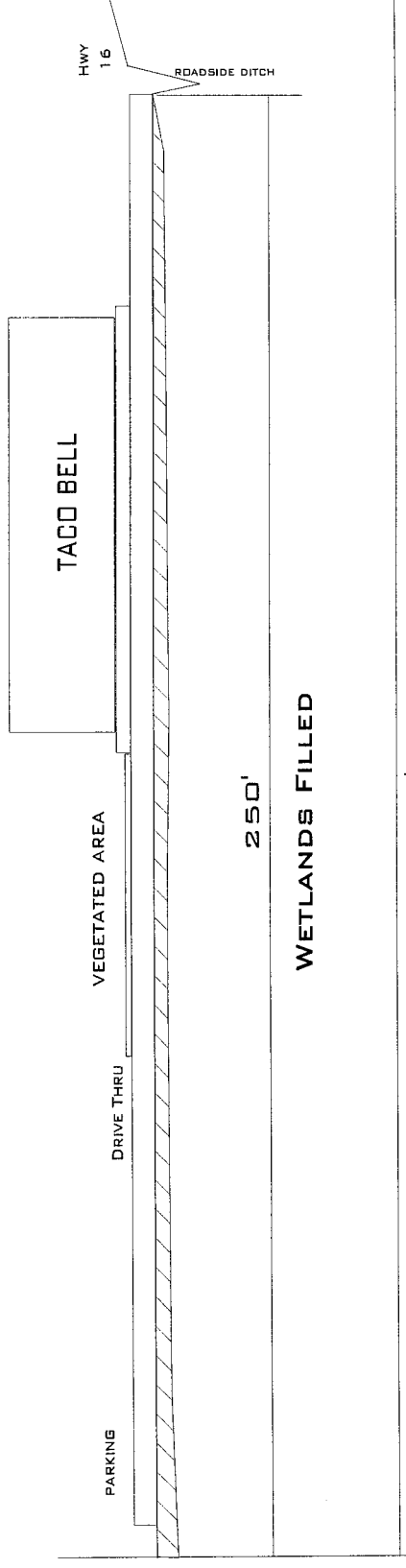
BEEZIE LANDRY
 LA. HWY 16
 SECTION 404 PERMIT APPLICATION
 MIXED USE DEVELOPMENT

A-A



NGVD
 113'
 112'
 111'
 110'
 109'
 108'
 107'

B-B



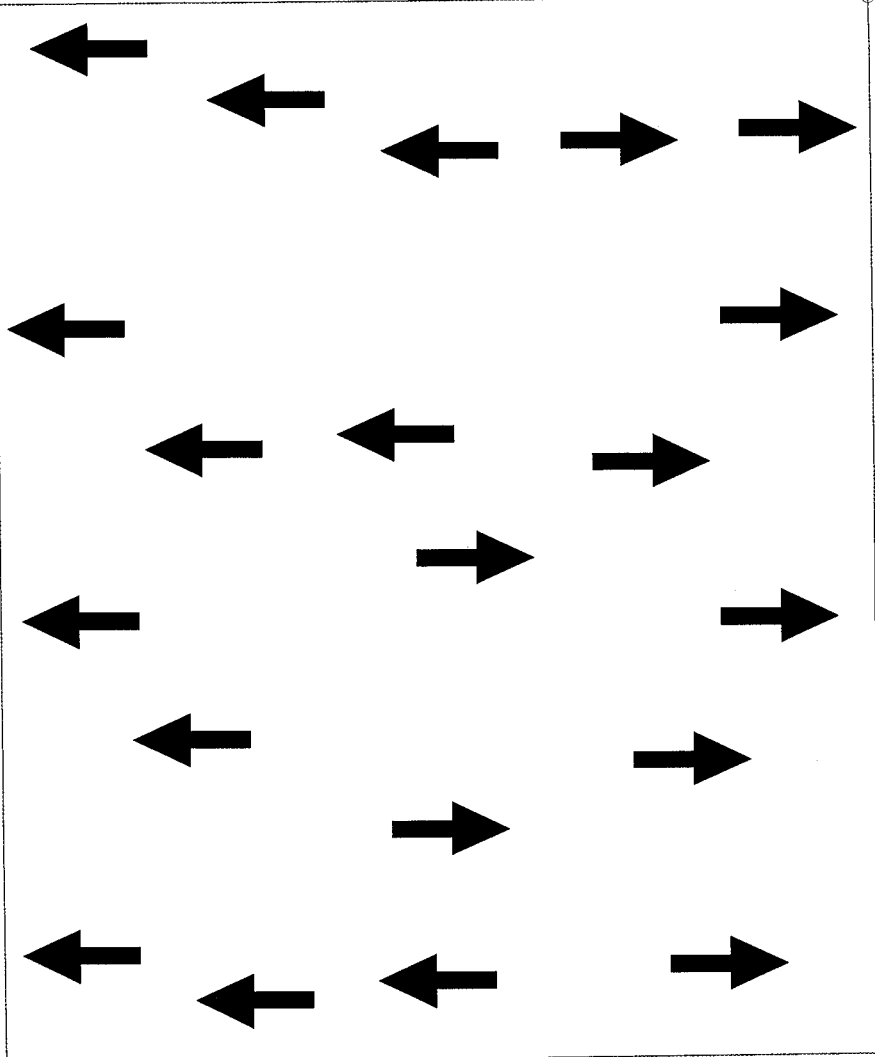
NGVD
 113'
 112'
 111'
 110'
 109'
 108'
 107'



HORIZONTAL SCALE: AS INDICATED
 VERTICAL SCALE: AS INDICATED

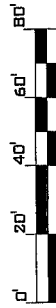
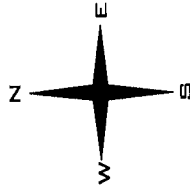
BEEZIE LANDRY
LA.HWY 16
SECTION 404 PERMIT APPLICATION
MIXED USE DEVELOPMENT

+/- 194' 300' * per email dated 2/28/13



VEGETATED ROADSIDE DITCH (EXISTING)

LA.HWY 16



↑ PRE PROJECT DRAINAGE FLOW

DRAFT DESIGN BY:
DUPLANTIS DESIGN GROUP
34 LOUIS PRIMA DRIVE
COVINGTON, LA 70433

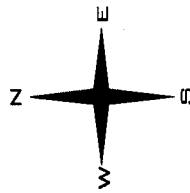
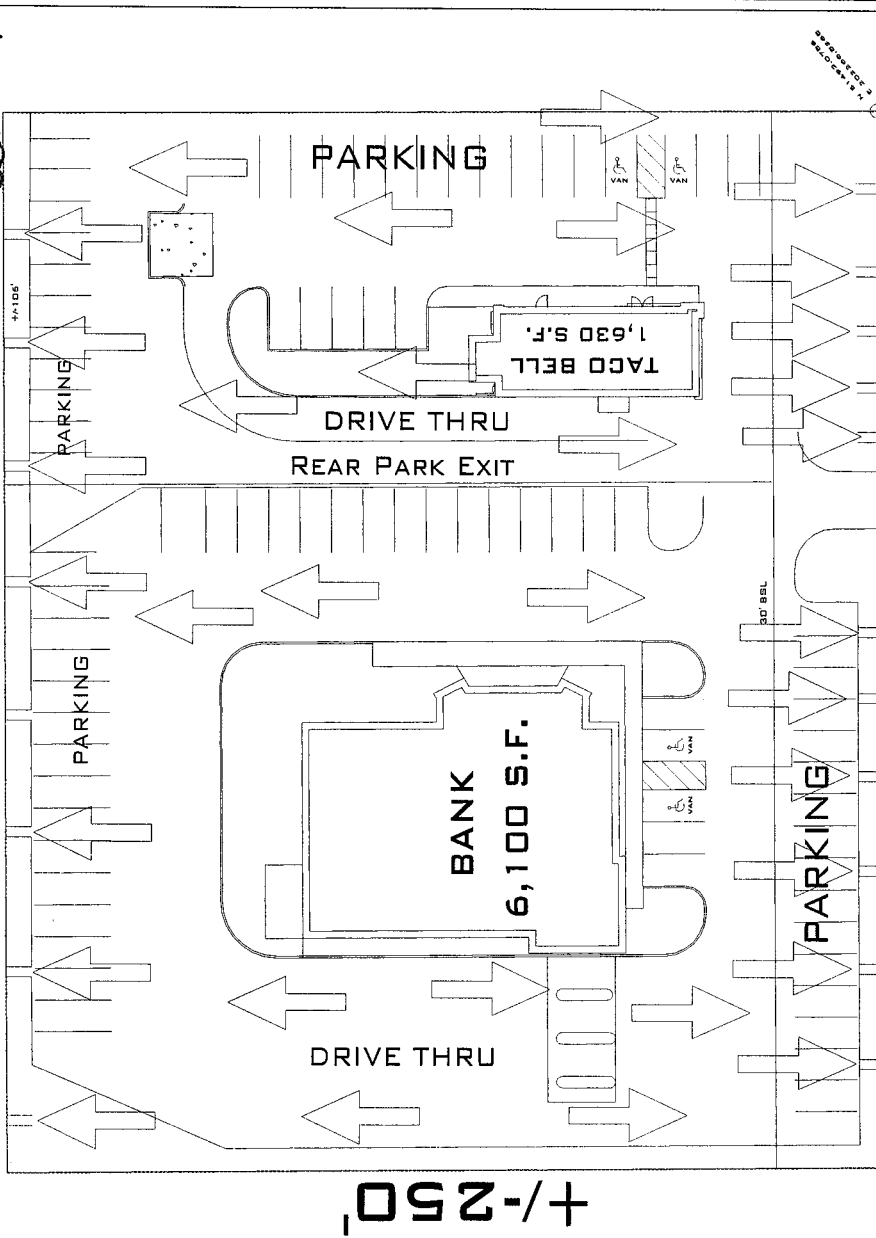
WETLAND OVERLAY AND CALCULATIONS BY:
HYDRIK
WETLAND AND GIS CONSULTANTS
WWW.HYDRIK.COM

BEEZIE LANDRY
LA.HWY 16

SECTION 404 PERMIT APPLICATION
MIXED USE DEVELOPMENT

VEGETATED BREAKS FOR SURFACE DRAINAGE OUTFALL
TO WETLANDS

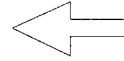
~~+/-194'~~ 300' *per email dated 2/28/13



VEGETATED BREAKS FOR SURFACE DRAINAGE OUFALL
TO ROADSIDE DITCH

LA.HWY 16

VEGETATED ROADSIDE DITCH (EXISTING)



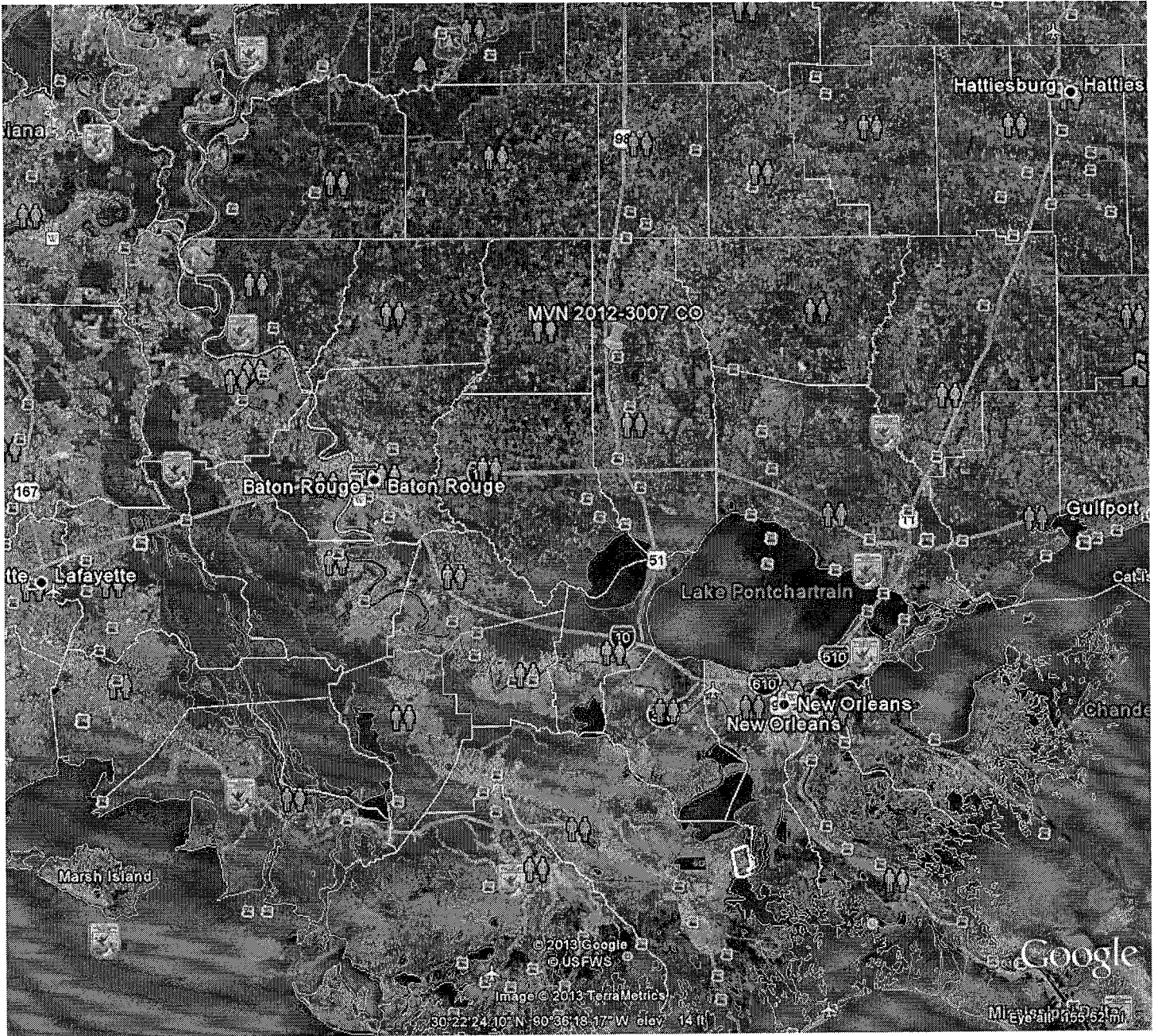
POST PROJECT DRAINAGE FLOW

WETLAND OVERLAY AND CALCULATIONS BY:

HYDRIK
WETLAND AND GIS CONSULTANTS
WWW.HYDRIK.COM

DRAFT DESIGN BY:

DUPLANTIS DESIGN GROUP
34 LOUIS PRIMA DRIVE
COVINGTON, LA 70433



Tangipahoa Parish