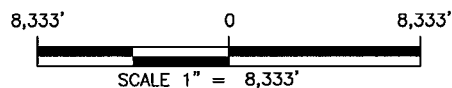


**NOTE:**

THESE DRAWINGS WERE PREPARED EXCLUSIVELY FOR OBTAINING REGULATORY APPROVALS AND DO NOT PURPORT TO BE CONSTRUCTION DRAWINGS OR SPECIFICATIONS.

**VICINITY MAP**

REPRODUCED FROM USGS "NEW ROADS", LA & "BATON ROUGE", LA 1:100,000 QUADS.



PREPARED BY:  
C. L. JACK STELLY & ASSOCIATES, INC.  
LAFAYETTE, LOUISIANA  
FILE NO. 9274-C32.DWG

**PROPOSED WELL LOCATION**

*Dupont 95 Well No. 3*

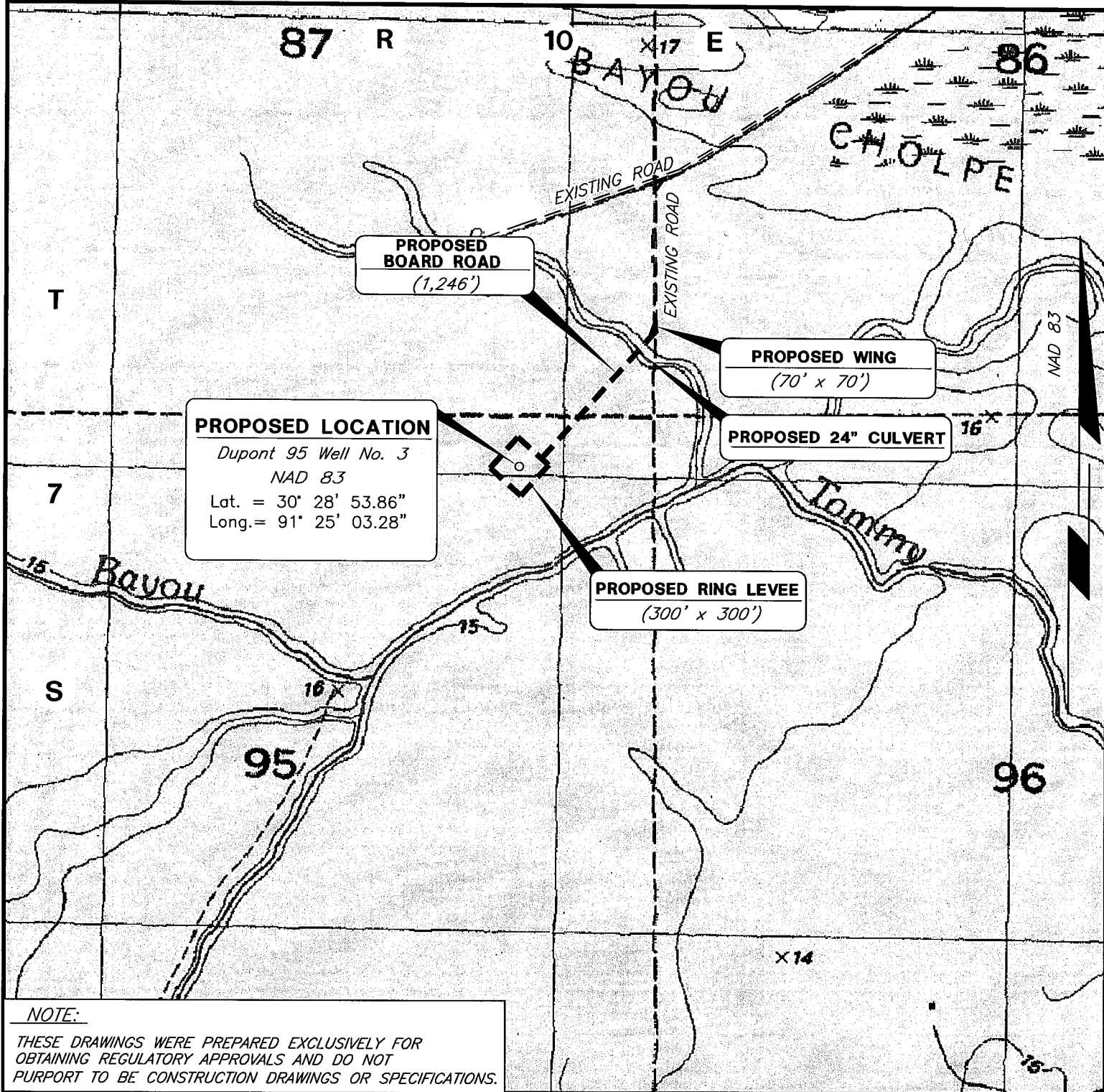
SEC. 95, T7S-R10E; BAYOU CHOLPE FIELD  
WEST BATON ROUGE PARISH, LOUISIANA

APPLICATION BY:  
APRIL 29, 2013

VITOL RESOURCES INC. OF DELAWARE  
HOUSTON, TEXAS

REVISIONS:

SHEET 1 OF 3

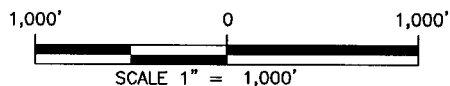


**NOTE:**

THESE DRAWINGS WERE PREPARED EXCLUSIVELY FOR  
OBTAINING REGULATORY APPROVALS AND DO NOT  
PURPORT TO BE CONSTRUCTION DRAWINGS OR SPECIFICATIONS.

**LOCATION MAP**

REPRODUCED FROM USGS "GROSSE TETE", LA  
7.5' QUADRANGLE.



PREPARED BY:  
C. L. JACK STELLY & ASSOCIATES, INC.  
LAFAYETTE, LOUISIANA  
FILE NO. 9274-C32.DWG

**PROPOSED WELL LOCATION**

*Dupont 95 Well No. 3*  
SEC. 95, T7S-R10E; BAYOU CHOLPE FIELD  
WEST BATON ROUGE PARISH, LOUISIANA

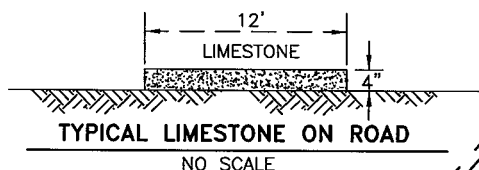
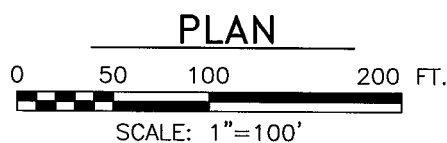
APPLICATION BY:  
APRIL 29, 2013

VITOL RESOURCES INC. OF DELAWARE  
HOUSTON, TEXAS

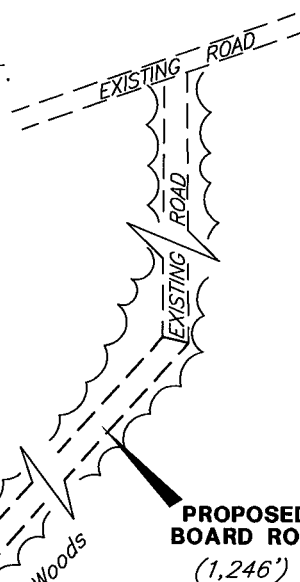
REVISIONS:

SHEET 2 OF 3

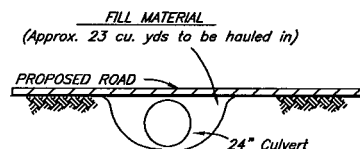
**SECTION B-B'**



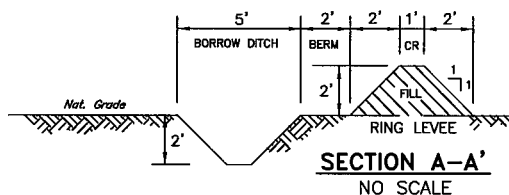
**TYPICAL LIMESTONE ON ROAD**



**PROPOSED  
BOARD ROAD**  
(1,246')



**TYPICAL CULVERT INSTALLATION**  
NO SCALE



**SECTION A-A'**  
NO SCALE

VITOL RESOURCES INC. OF DELAWARE  
Dupont 95

03

NOTES:

- 1.) Approximately 267 cubic yards of excavation required for proposed ring levee.
- 2.) Boards will be laid on natural ground for drill area and access road.
- 3.) If the well is successful, road will be permatized by adding 4" of limestone. (Approx. 185 cubic yards)
- 4.) A 24" culvert will be installed at each cross drainage feature.

## TYPICAL RING LEVEE

PREPARED BY:  
C. L. JACK STELLY & ASSOCIATES, INC.  
LAFAYETTE, LOUISIANA  
FILE NO. 9274-C32.DWG

## PROPOSED WELL LOCATION

Dupont 95 Well No. 3

SEC. 95, T7S-R10E; BAYOU CHOLPE FIELD  
WEST BATON ROUGE PARISH, LOUISIANA

APPLICATION BY:  
APRIL 29, 2013

VITOL RESOURCES INC. OF DELAWARE  
HOUSTON, TEXAS

REVISIONS:

SHEET 3 OF 3