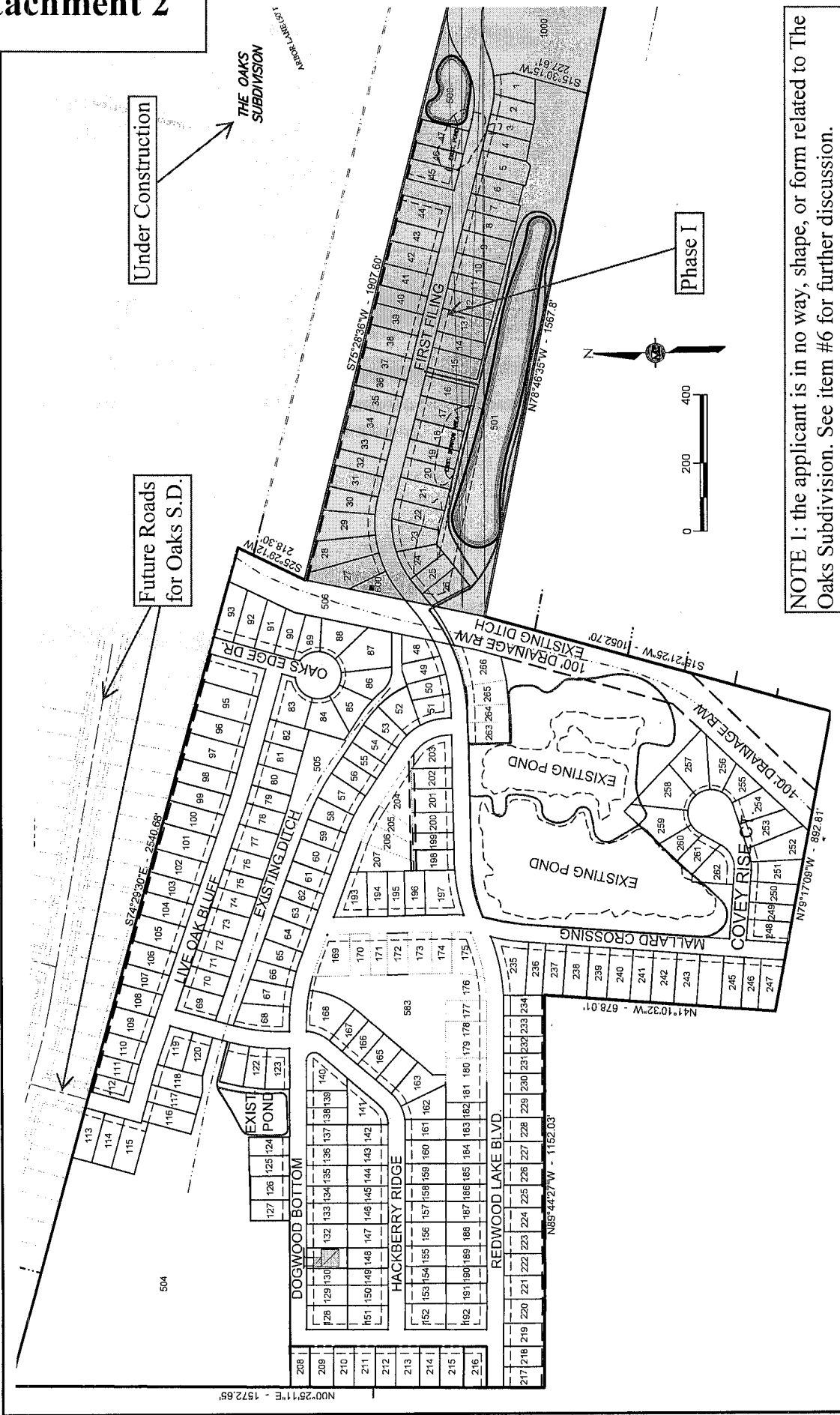


Attachment 2

C:\Documents and Settings\craig.MONROE\CORIE\local settings\temp\AcPublish_7564\Welllands.dwg (Overview no Waterfalls) Plotted on: Jan 10, 2012 - 1:36pm by chc



NOTE 1: the applicant is in no way, shape, or form related to The Oaks Subdivision. See item #6 for further discussion.

SHEET NO. 2

GENERAL OVERVIEW
REDWOOD LAKE, PHASE 2 - ZACHARY, LA

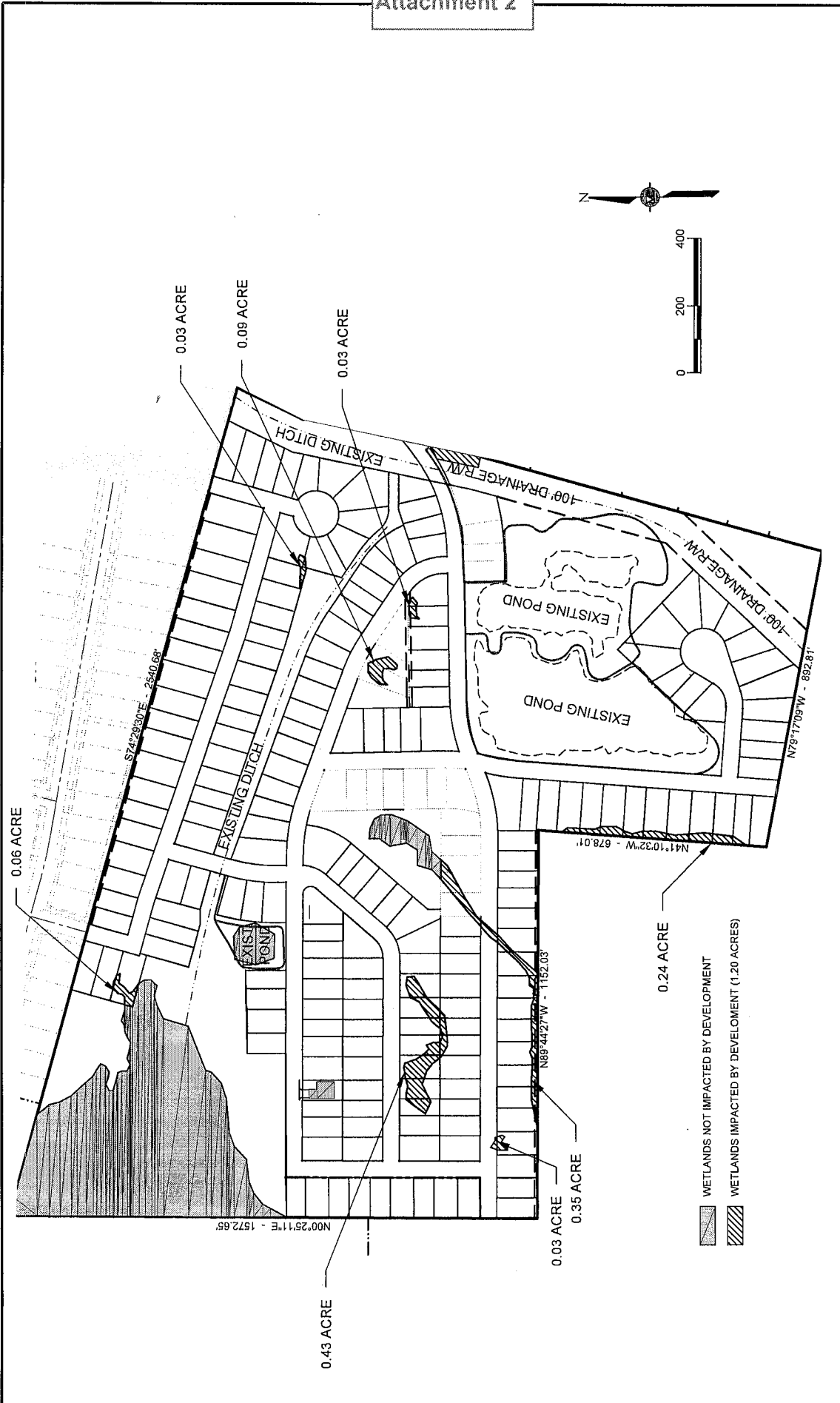
MONROE & CORIE, INC.
CONSULTING ENGINEERS
11325 Pennington Avenue
Baton Rouge, Louisiana 70809
Tel. (225) 298-1906 Fax (225) 298-1941

PROJ. NO. 1014
DATE: JANUARY 2012
DESIGN BY: CHC
DRAWN BY: CHC
SCALE: AS SHOWN

21502 / 112612

C:\Documents and Settings\croig\MONROECORE\local_settings\temp\AcPublish_153788\Wetlands.dwg (Overview with Wetlands) Plotted on: Jan 23, 2012 - 9:22am by chc

Attachment 2



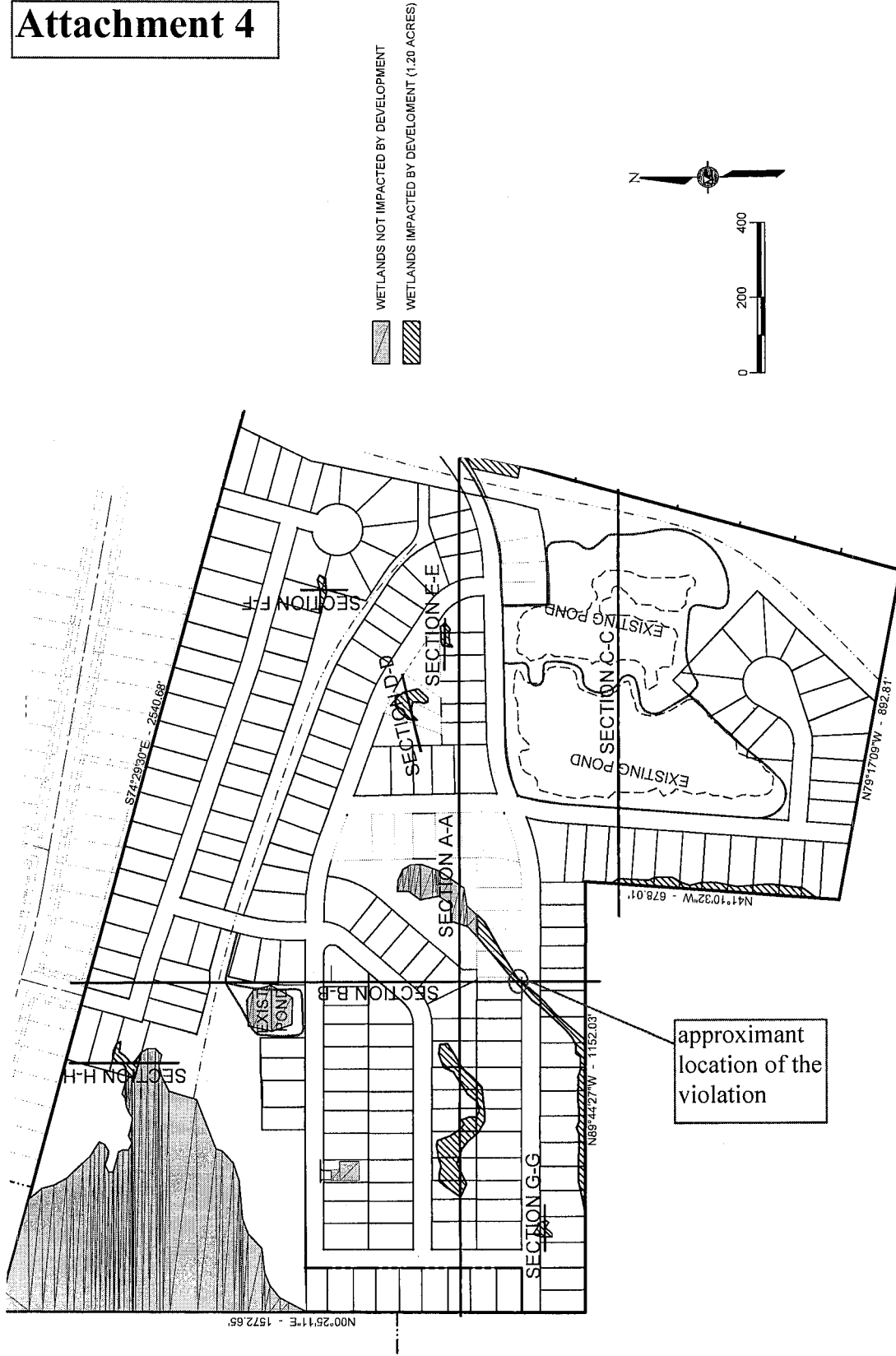
SHEET NO. 3

GENERAL OVERVIEW WITH WETLANDS
REDWOOD LAKE, PHASE 2 - ZACHARY, LA

MONROE & CORIE, INC.
CONSULTING ENGINEERS
11526 Pennywood Avenue
Baton Rouge, Louisiana 70809
Tel. (225) 295-1905 Fax (225) 295-1941

PROJ. NO.	101.4
DATE	JANUARY 2012
DESIGN BY	CHC
DRAWN BY	CHC
SCALE	AS SHOWN

Attachment 4



SHEET NO. 4

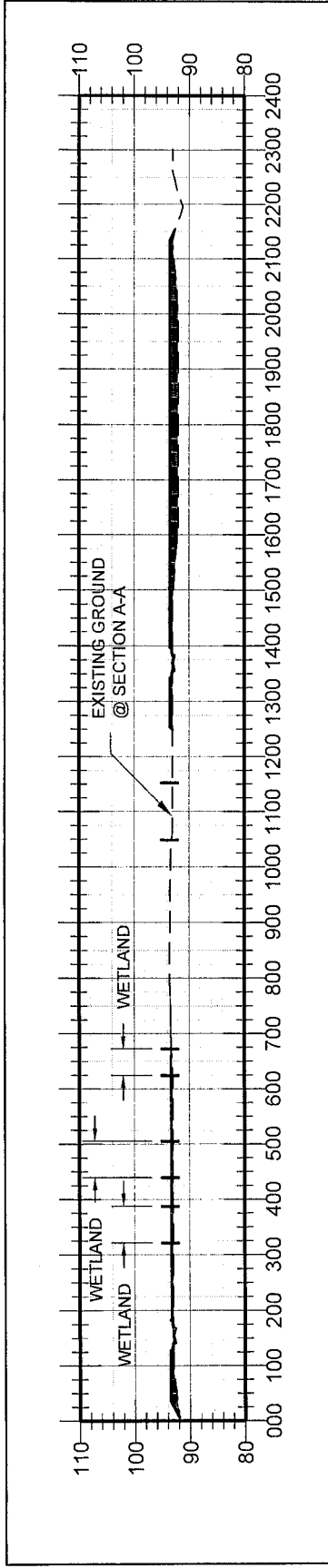
GENERAL OVERVIEW FOR CROSS SECTIONS
 REDWOOD LAKE, PHASE 2 - ZACHARY, LA

MONROE & CORIE, INC.
 CONSULTING ENGINEERS
 11325 Permywood Avenue
 Baton Rouge, Louisiana 70809
 Tel. (225) 283-1906 Fax (225) 283-1941

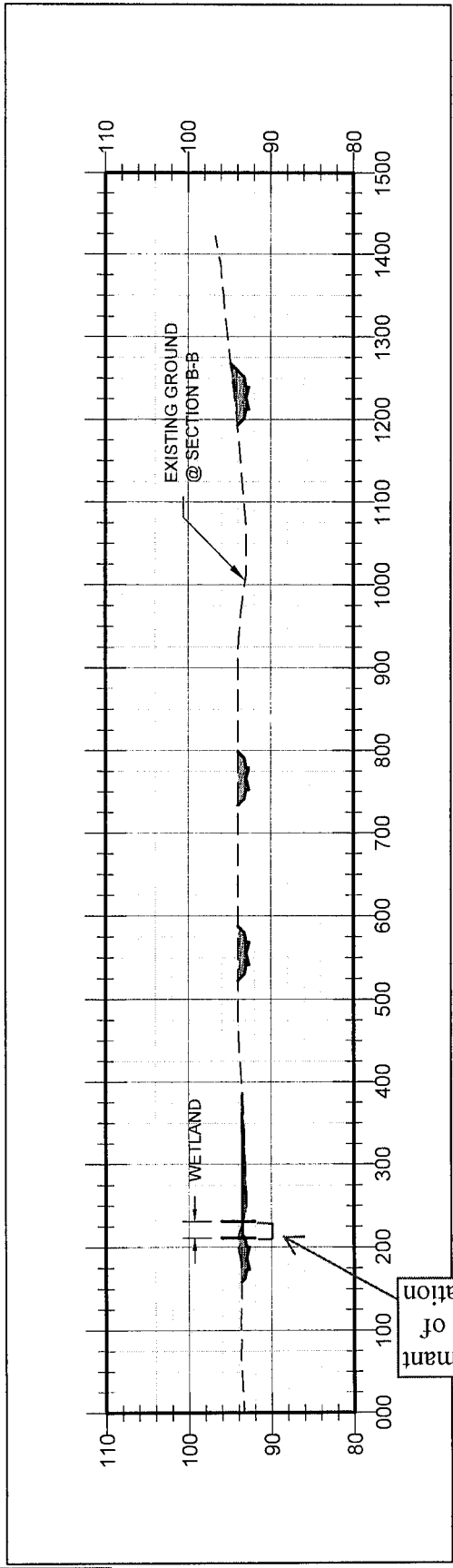
PROJ. NO.	1074
DATE	JANUARY 2012
DESIGN BY:	CHC
DRAWN BY:	CHC
SCALE:	AS SHOWN

1/26/12 4 of 12

Attachment 5



SECTION A-A



SECTION B-B

LEGEND
 PROPOSED FILL

CROSS SECTIONS A & B
REDWOOD LAKE, PHASE 2 - ZACHARY, LA

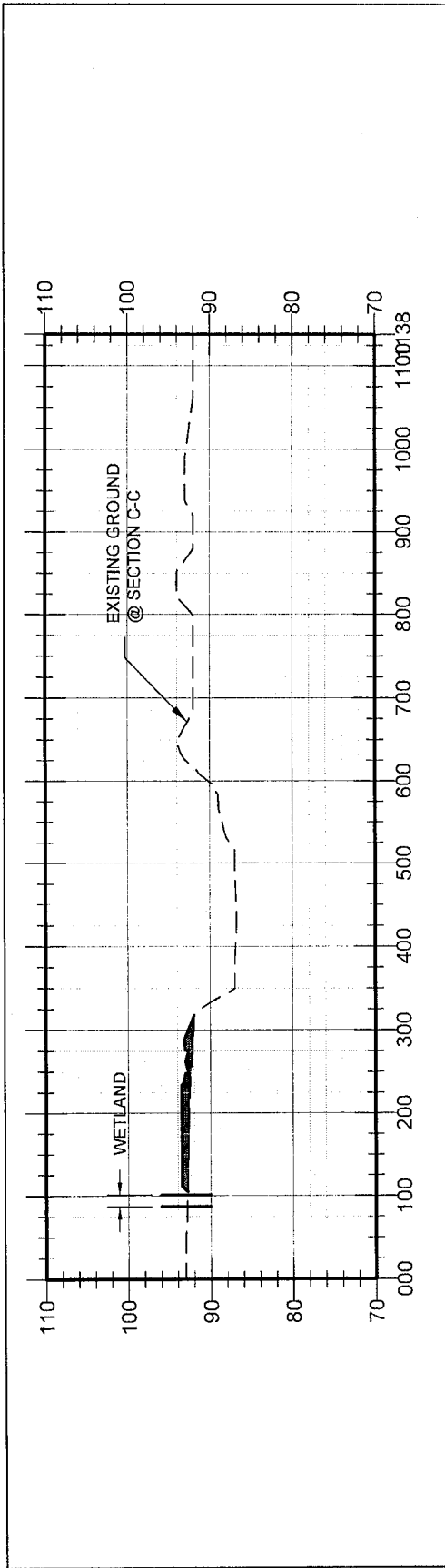
MONROE & CORIE, INC.
 CONSULTING ENGINEERS
 11826 Perrywood Avenue
 Baton Rouge, Louisiana 70809
 TEL (225) 285-1906 Fax (225) 285-1941

PROJ. NO.	1014
DATE	JANUARY 2012
DESIGN BY:	CHC
DRAWN BY:	CHC
SCALE:	AS SHOWN

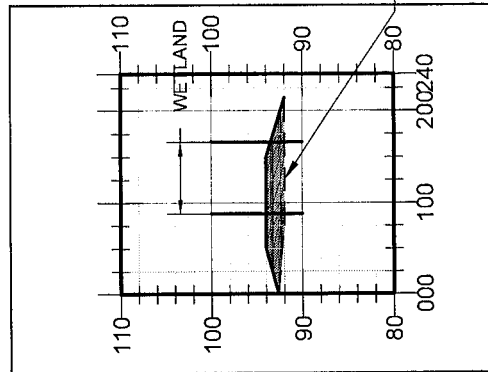
1/26/12

5 of 12

C:\Documents and Settings\MAJL-DELCORIE\local_settings\temp\ACF\publish_16064\Wetlands.dwg (SECTION C-F) Plotted on: Jan 10, 2012 - 9:44am by chc

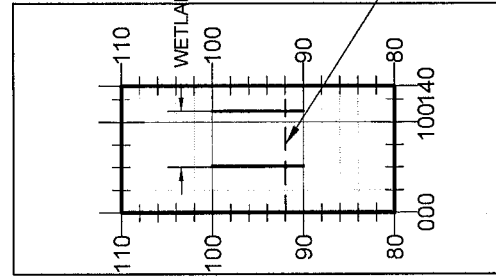


SECTION C-C



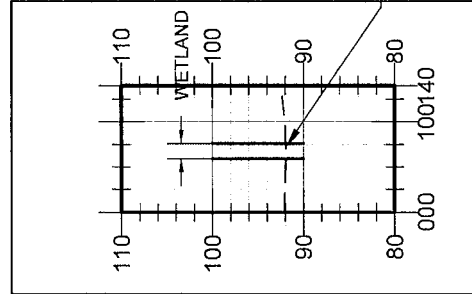
EXISTING GROUND
@ SECTION D-D

SECTION D-D



EXISTING GROUND
@ SECTION E-E

SECTION E-E



EXISTING GROUND
@ SECTION F-F

SECTION F-F

LEGEND
 PROPOSED FILL

PROJ. NO.	1014
DATE	JANUARY 2012
DESIGN BY:	CHC
DRAWN BY:	CHC
SCALE:	AS SHOWN

MONROE & CORIE, INC.
 CONSULTING ENGINEERS

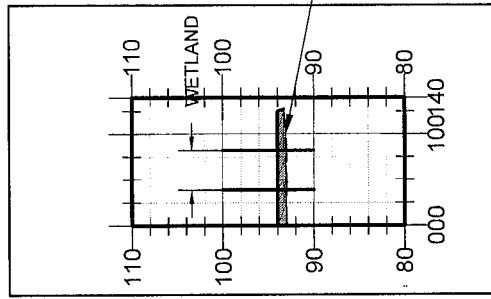
 11925 Pennsylvania Avenue
 Baton Rouge, Louisiana 70809
 Tel. (225) 293-1606 Fax (225) 293-1941

CROSS SECTIONS C, D, E & F

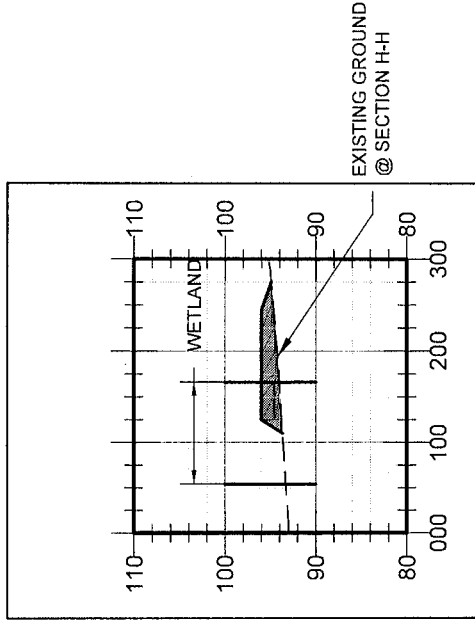
REDWOOD LAKE, PHASE 2 - ZACHARY, LA

SHEET NO. 6

1/26/12 6 of 12



SECTION G-G



SECTION H-H

LEGEND

PROPOSED FILL

PROJ. NO.	1014
DATE	JANUARY 2012
DESIGN BY:	CHC
DRAWN BY:	CHC
SCALE:	AS SHOWN

MONROE & CORIE, INC.
CONSULTING ENGINEERS
 11326 Pennywood Avenue
 Baton Rouge, Louisiana 70809
 Tel. (225) 285-1905 Fax (225) 285-1941

CROSS SECTIONS G & H

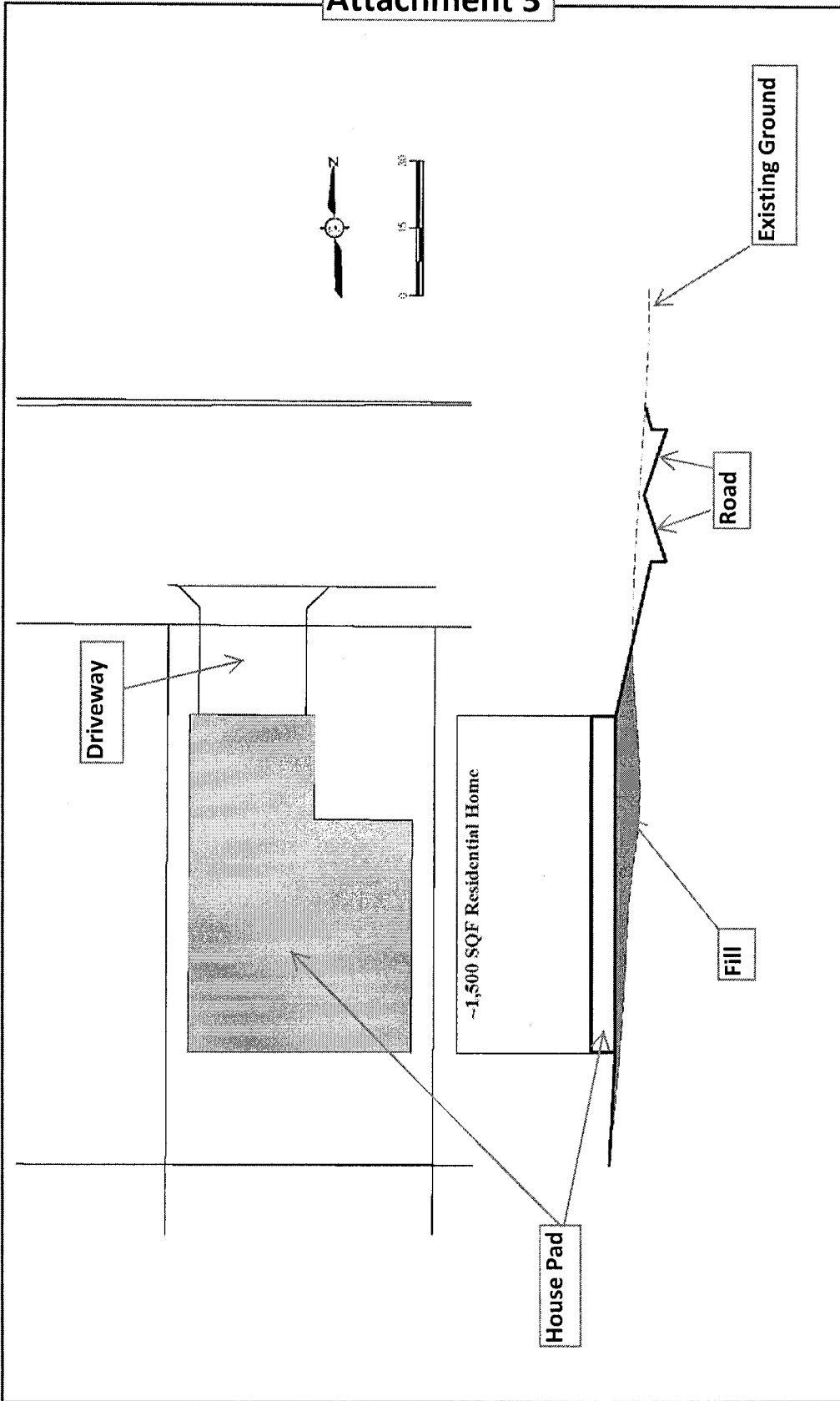
REDWOOD LAKE, PHASE 2 - ZACHARY, LA

SHEET NO. 7

12/21/11 7:07

C:\Documents and Settings\craig.MONROECORIE\local settings\temp\AcPublish_006A\Wetlands.dwg (Typical Lot Plan View) Plotted on: Jan 10, 2012 9:46am by chc

Attachment 3



sheet no. 8

TYPICAL RESIDENTIAL LOT

REDWOOD LAKE, PHASE 2 - ZACHARY, LA

MONROE & CORIE, INC.
 11352 Permywood Avenue
 Baton Rouge, Louisiana 70809
 Tel: (225) 293-1805 Fax: (225) 293-1841

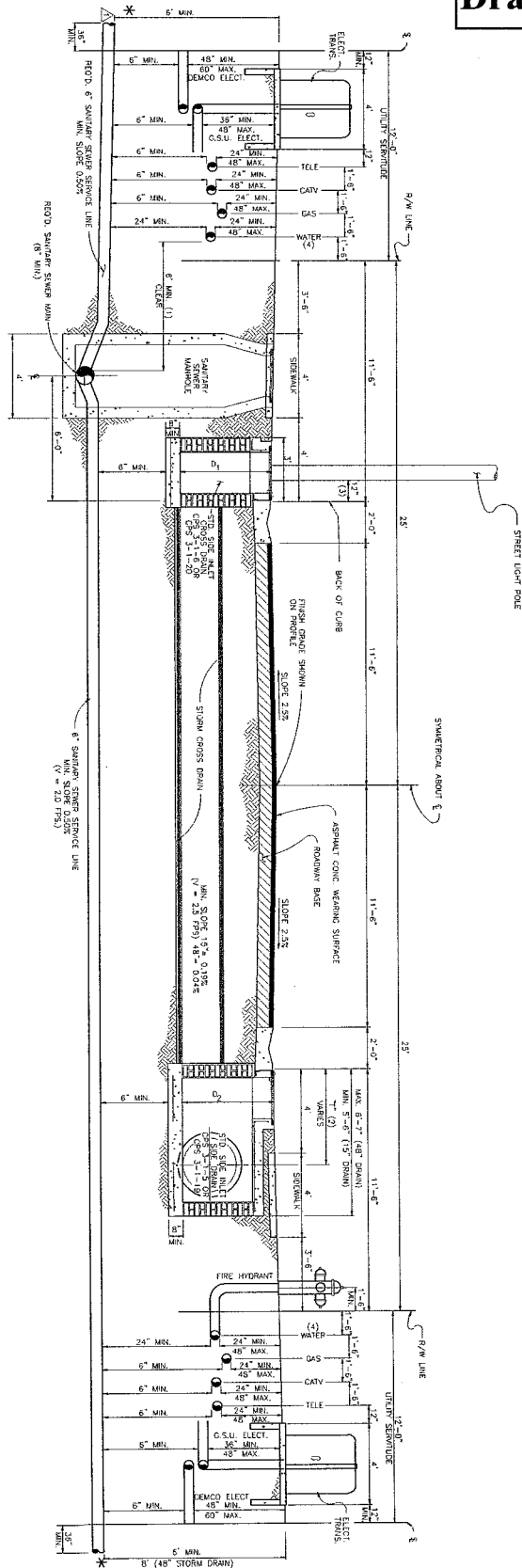
PROJ. NO.	1084
DATE	NOVEMBER 2012
DESIGN BY	CHC
SCALE	AS SHOWN

1/26/12

8 of 12

Redwood Lake Phase II Street Cross Section Drawing 6 of 7

\\CRAIG\1\MON\LOCALS\1\Temp\AcPublish_1072\Wetlands drawings.dwg (Street Cross Section) Plotted on: Jan 28, 2011 - 1:32pm by chc



PROJ. NO.	1014
DATE	OCT. 2010
DESIGN BY	CHC
DRAWN BY	CHC
SCALE	AS SHOWN

MONROE & CORIE, INC.
CONSULTING ENGINEERS
11225 Penningwood Avenue
Baton Rouge, Louisiana 70809
Tel. (225) 285-1805 Fax (225) 283-1841

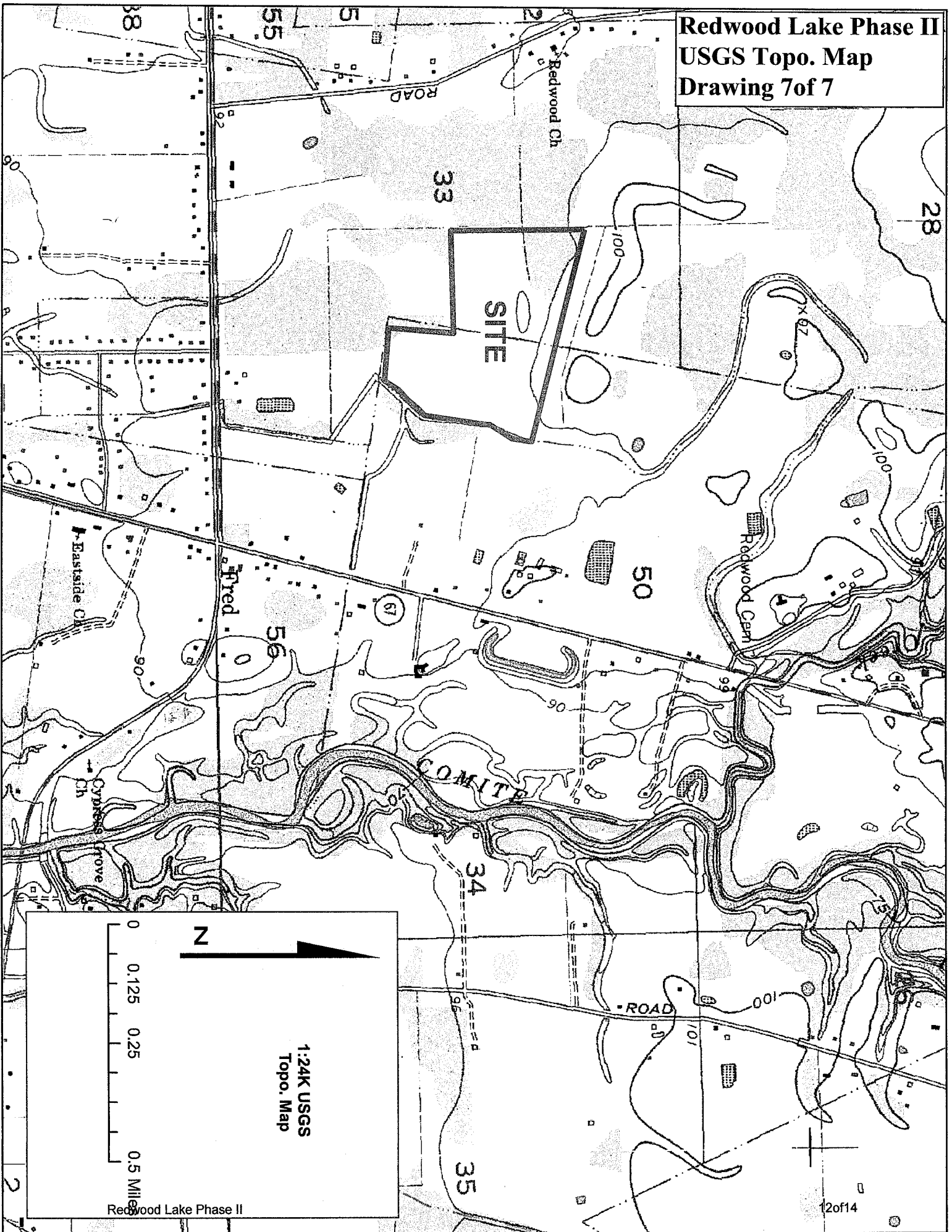
**TYPICAL STREET SECTION
WETLANDS IMPACT**

REDWOOD LAKE, FIRST FILING - ZACHARY, LA

SHEET NO.	4
-----------	---

1/26/12 9 of 12

Redwood Lake Phase II
USGS Topo. Map
Drawing 7 of 7



Redwood Lake Phase II

12 of 14

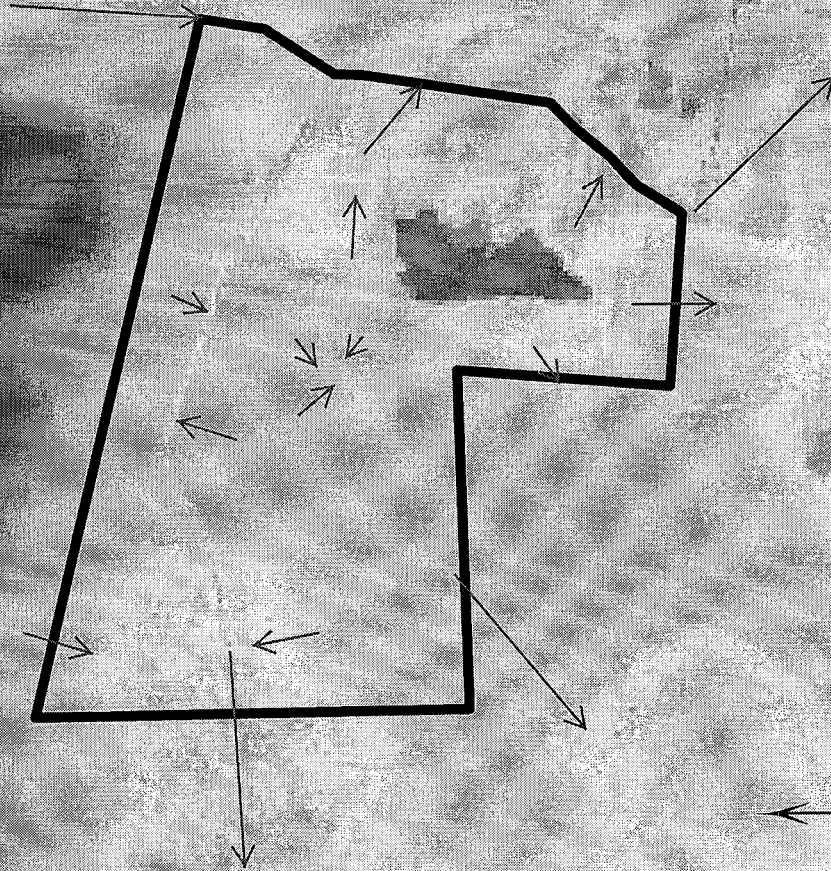
11/26/12

10 of 12

Redwood Lake 80 ac General Overview LIDAR

Attachment 8

pre construction approximate drainage patterns



boundary80ac

DEMToRa_dem_1

Value

High : 122.259

Low : 59.207

17Mar2011

This survey is not a boundary survey and should not be utilized as such

This map represents the professional opinion of E.C.G. LLC.

ECG#: JD_EK_1004_BerthelotPII

This map constructed expressly for Redwood Lake LLC.

Drawn By: EGK
Date: 1Mar2011

Field data used to construct this map collected on 1Mar2011

Environmental Consulting Group
(985) 351-7275
(985) 370-0004

Approximately 80 Acre PII Redwood Lake

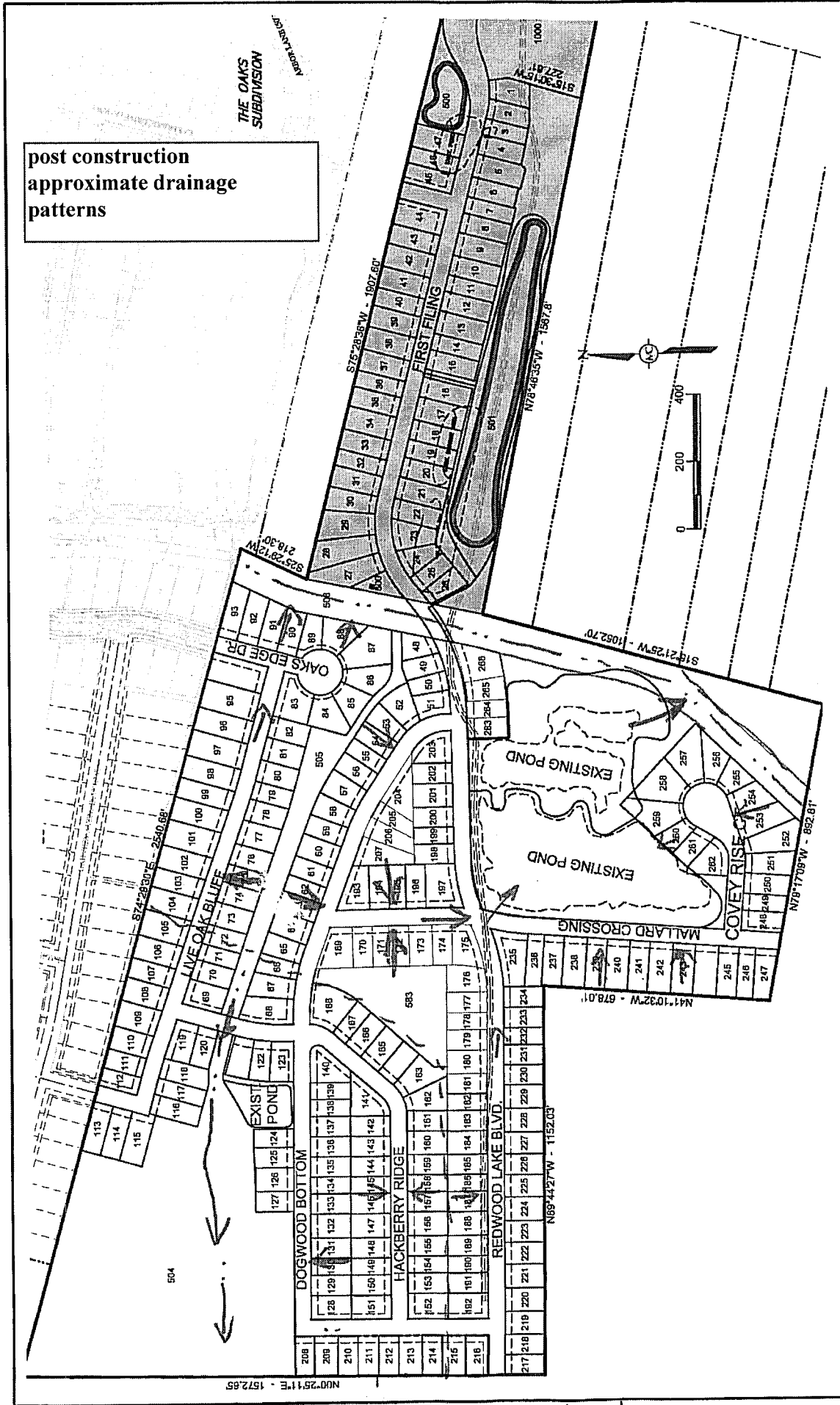
Approximately 2 Miles NE of Zachary, LA

10 of 55

211921

11 of 12

M:\MCI Projects\1014 - Redwood Lake\Wetlands\Phase 2\Wetlands.dwg (Overview no Wetlands) Plotted on: Jan 09, 2012 - 1:53pm by chc



PROJ. NO. 1014	SHEET NO. 2
DATE: DECEMBER 2011	GENERAL OVERVIEW REDWOOD LAKE, PHASE 2 - ZACHARY, LA
DESIGN BY: CHC	
DRAWN BY: CHC	
SCALE: AS SHOWN	

MONROE & CORIE, INC.
 ENGINEERS & ARCHITECTS
 11385 Perimeter Avenue
 Atlanta, Georgia 30349
 Tel. (404) 863-1806 Fax (404) 263-1841

1/26/12 12 of 12