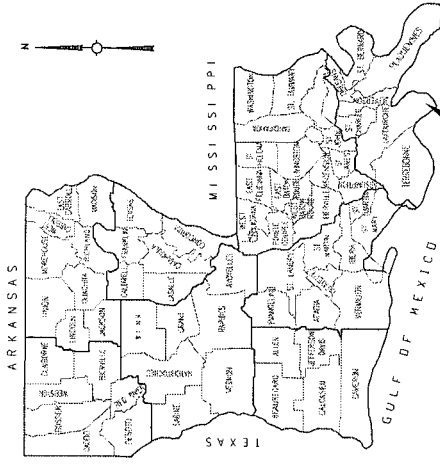
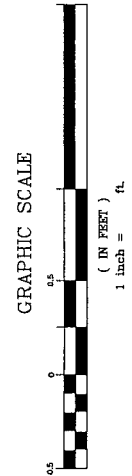


LAYOUT MAP



VICINITY MAP

SOUTHEAST LAND DISTRICT  
 T12S - R22E  
 SECTIONS 23 & 26  
 LAFOURCHE PARISH, LA



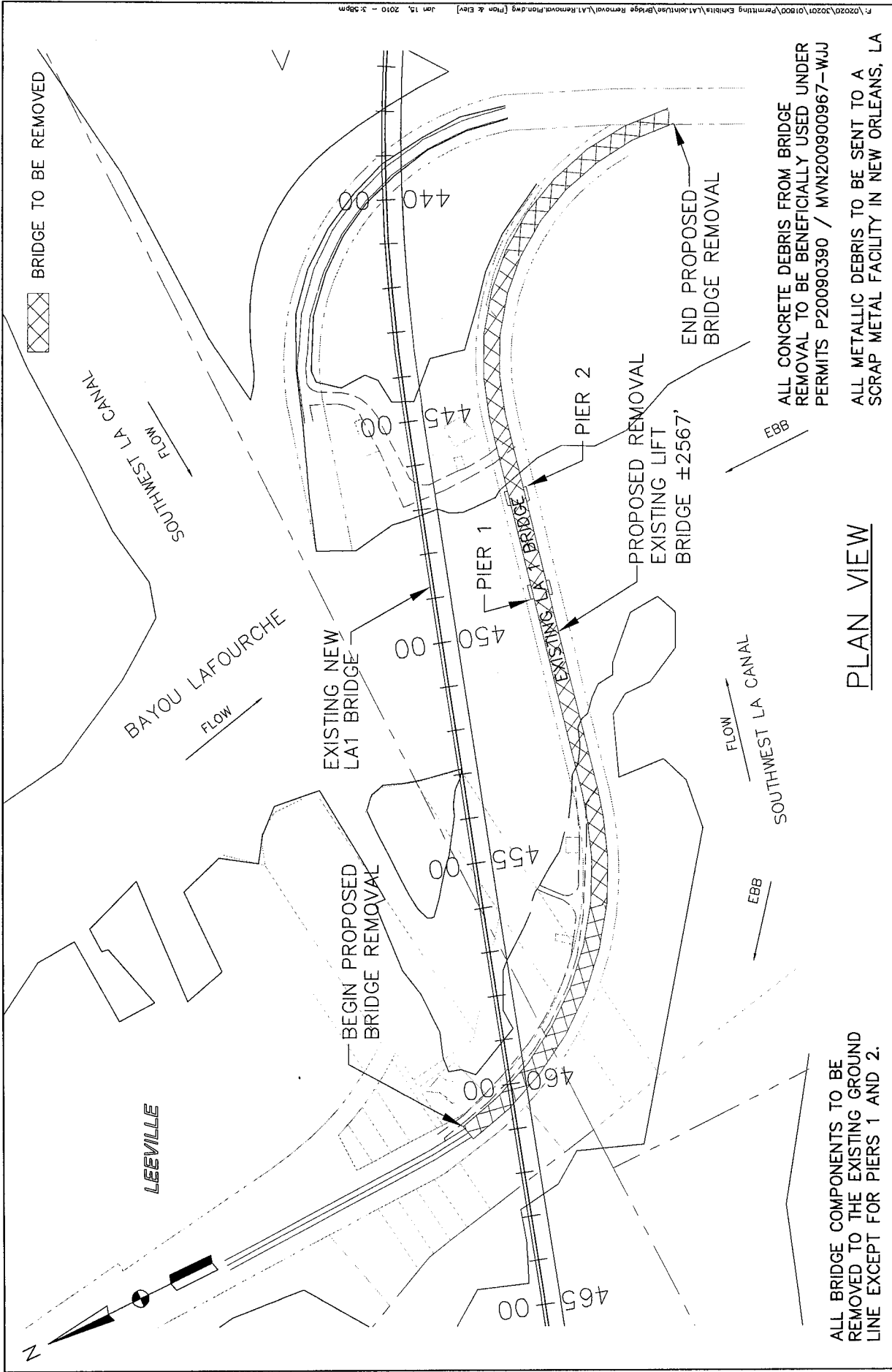
LA 1 IMPROVEMENTS  
 GOLDEN MEADOW TO FOURCHON  
 LAFOURCHE PARISH  
 JOINT USE PERMIT APPLICATION  
 BAYOU LAFOURCHE BRIDGE REMOVAL



MODIFICATION 1

	PARISH	LAFOURCHE
	FEDERAL PROJECT	HP-NH-T021(002)
	STATE PROJECT	700-29-0112
	SHEET NUMBER	FIGURE 1

JANUARY 2010

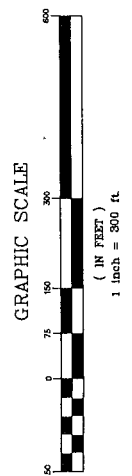


ALL BRIDGE COMPONENTS TO BE REMOVED TO THE EXISTING GROUND LINE EXCEPT FOR PIERS 1 AND 2.

ALL CONCRETE DEBRIS FROM BRIDGE REMOVAL TO BE BENEFICIALLY USED UNDER PERMITS P20090390 / MVN200900967 - WJJ

ALL METALLIC DEBRIS TO BE SENT TO A SCRAP METAL FACILITY IN NEW ORLEANS, LA

PLAN VIEW



**LA 1 IMPROVEMENTS  
GOLDEN MEADOW TO FOURCHON  
LAFOURCHE PARISH  
JOINT USE PERMIT APPLICATION**

**BAYOU LAFOURCHE BRIDGE REMOVAL**

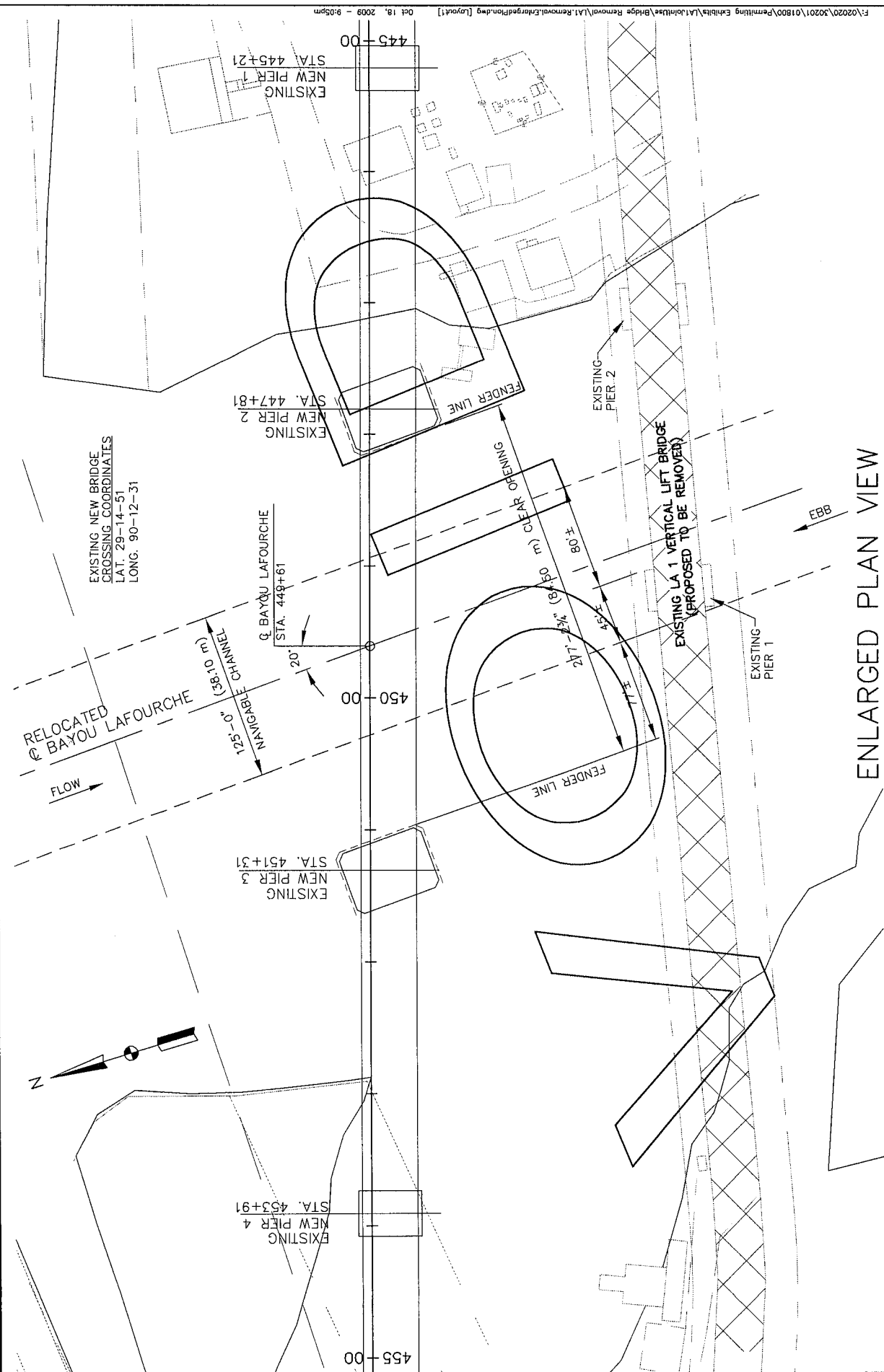


MODIFICATION 1

	PARISH	LAFOURCHE
	FEDERAL PROJECT	HP-NH-T021(002)
	STATE PROJECT	700-29-0112
	SHEET NUMBER	FIGURE 2

JANUARY 2010





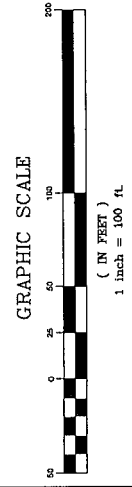
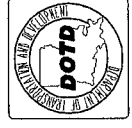
EXISTING NEW BRIDGE  
CROSSING COORDINATES  
LAT. 29-14-51  
LONG. 90-12-31

RELOCATED  
Q. BAYOU LAFOURCHE

ENLARGED PLAN VIEW

**LA 1 IMPROVEMENTS  
GOLDEN MEADOW TO FOURCHON  
LAFOURCHE PARISH  
JOINT USE PERMIT APPLICATION**

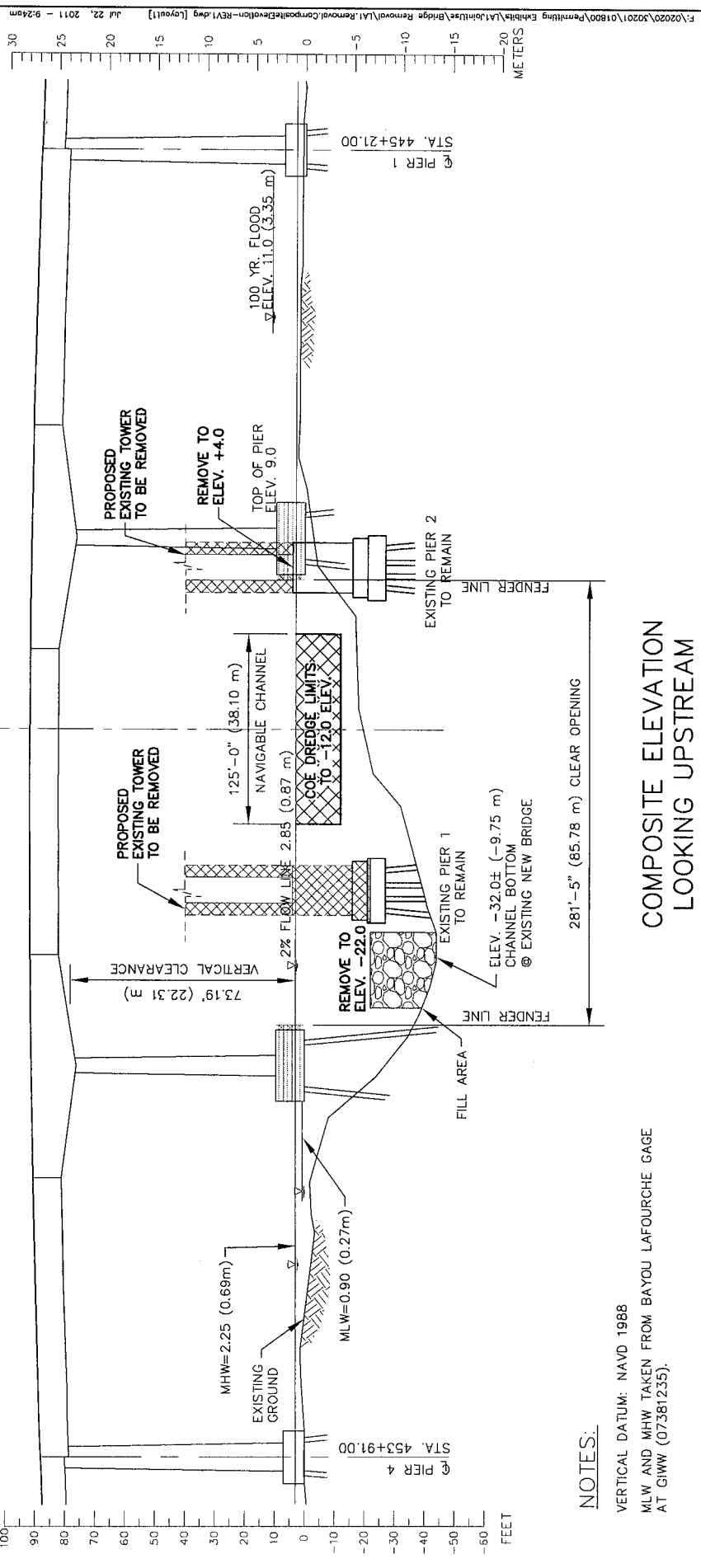
**BAYOU LAFOURCHE BRIDGE REMOVAL**



MODIFICATION 1	
	PARISH: LAFOURCHE
	FEDERAL PROJECT: HP-NH-T021(002)
	STATE PROJECT: 700-29-0112
	SHEET NUMBER: FIGURE 4

JANUARY 2010

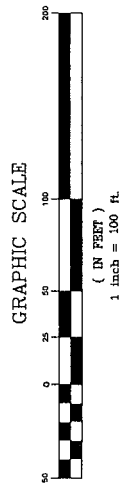




**NOTES:**

VERTICAL DATUM: NAVD 1988  
 MLW AND MHW TAKEN FROM BAYOU LAFOURCHE GAGE  
 AT G1WW (07381235).

**COMPOSITE ELEVATION  
 LOOKING UPSTREAM**



**LA 1 IMPROVEMENTS  
 GOLDEN MEADOW TO FOURCHON  
 LAFOURCHE PARISH  
 JOINT USE PERMIT APPLICATION**



**BAYOU LAFOURCHE BRIDGE REMOVAL**

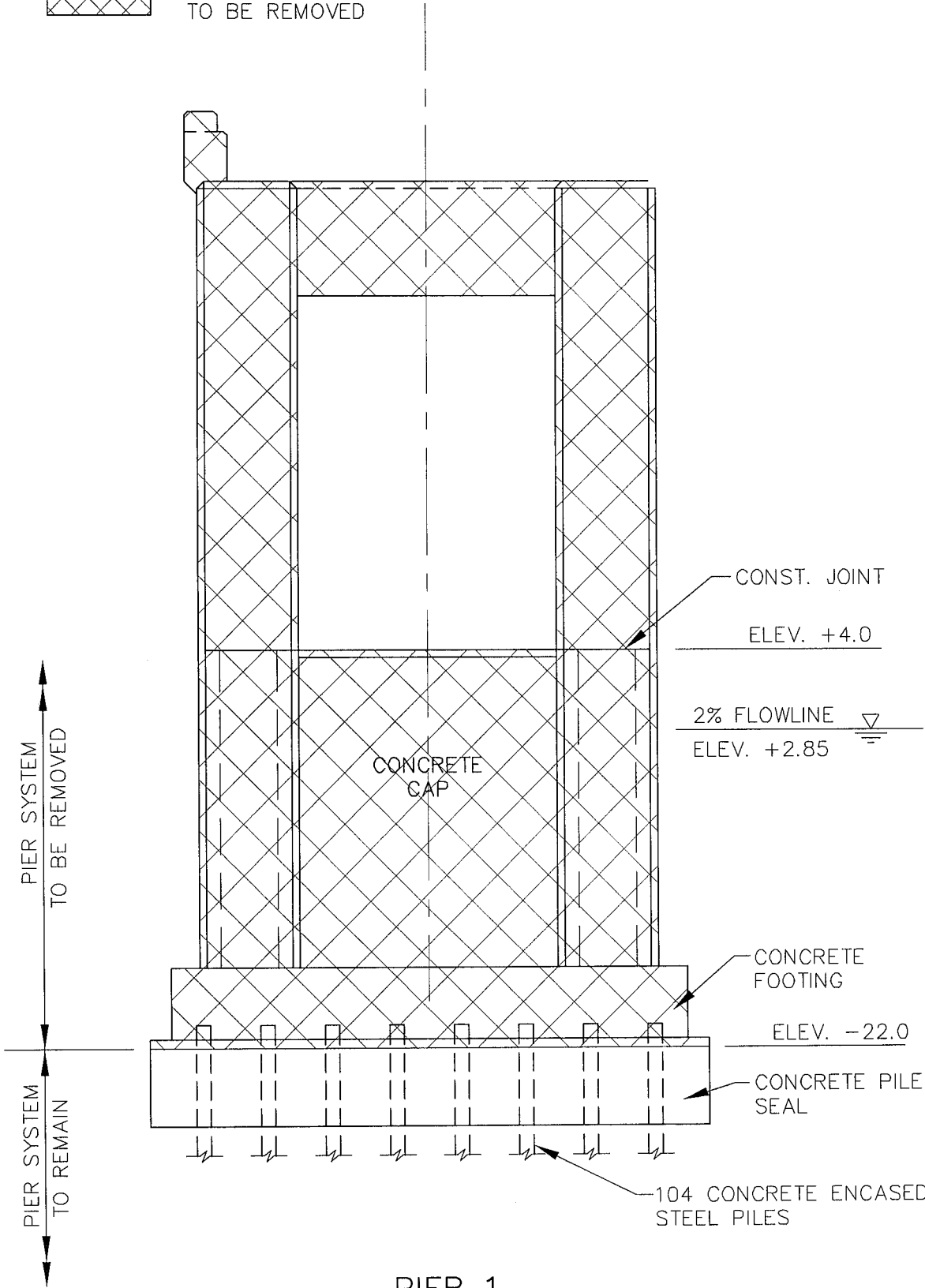
	PARISH	LAFOURCHE
	FEDERAL PROJECT	HP-NH-T021(002)
	STATE PROJECT	700-29-0112
	SHEET NUMBER	FIGURE 5

REV. 7-22-11 JANUARY 2010

F:\2020\20201\01800\Permitting Exhibits\A\Job\Use\Bridges Removal\A1.Removal\CompositeElevation-REV1.dwg [Layout1] Jul 22, 2011 - 9:24am



CONCRETE PIER  
TO BE REMOVED



PIER 1  
ELEVATION VIEW

PARISH	LAFOURCHE
FEDERAL PROJECT	HP-NH-T021(002)
STATE PROJECT	700-29-0112
SHEET NUMBER	FIGURE 6

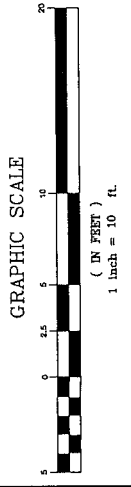


REV. 7-22-11 JULY 2009



LA 1 IMPROVEMENTS  
GOLDEN MEADOW TO FOURCHON  
LAFOURCHE PARISH  
JOINT USE PERMIT APPLICATION

BAYOU LAFOURCHE BRIDGE REMOVAL

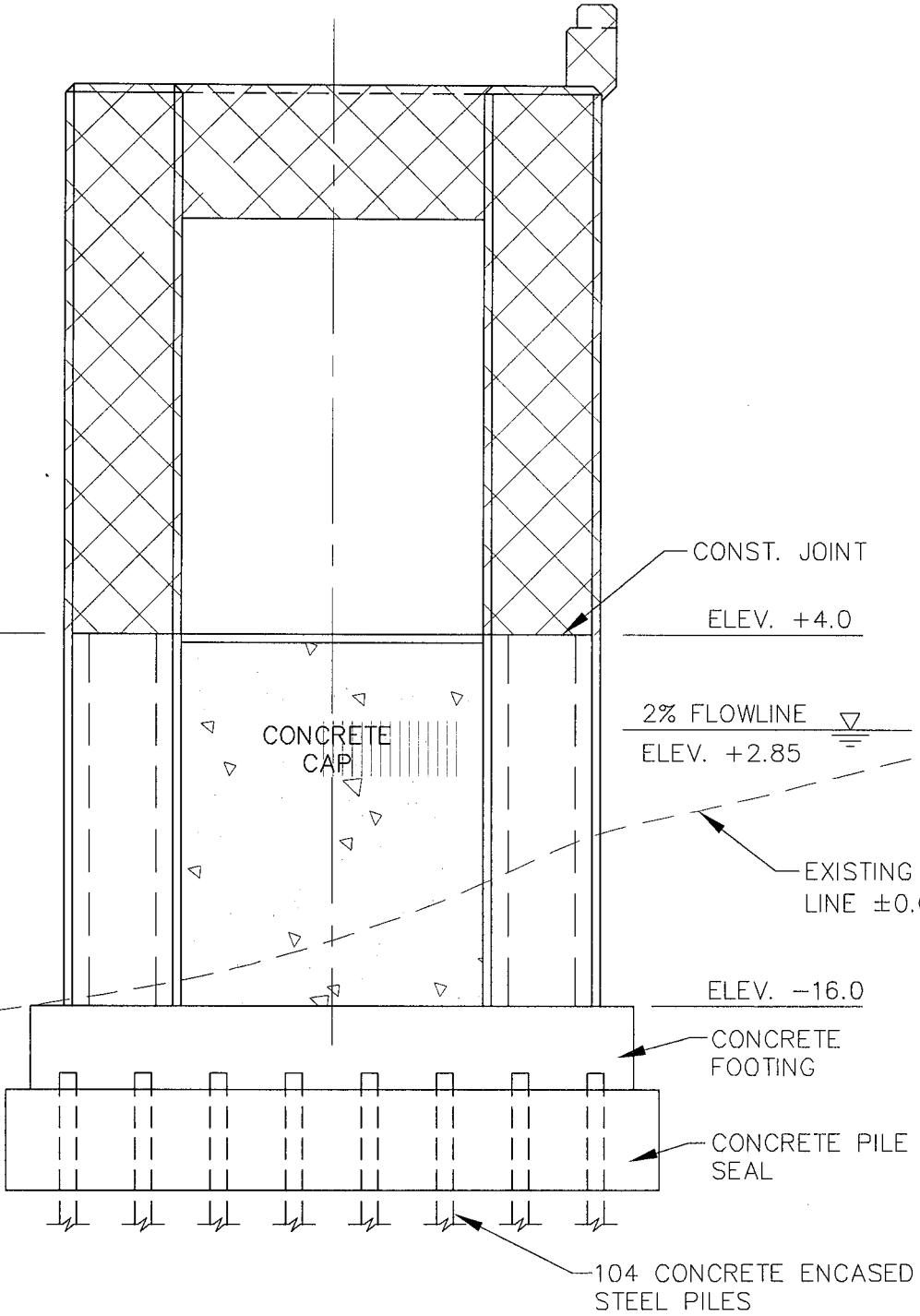




CONCRETE PIER TO BE REMOVED

PIER SYSTEM TO BE REMOVED

PIER SYSTEM TO REMAIN



PIER 2  
ELEVATION VIEW

MODIFICATION 1

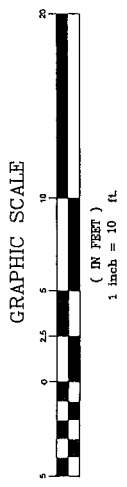
	PARISH LAFOURCHE
	FEDERAL PROJECT HP-NH-T021(002)
	STATE PROJECT 700-29-0112
	SHEET NUMBER FIGURE 7

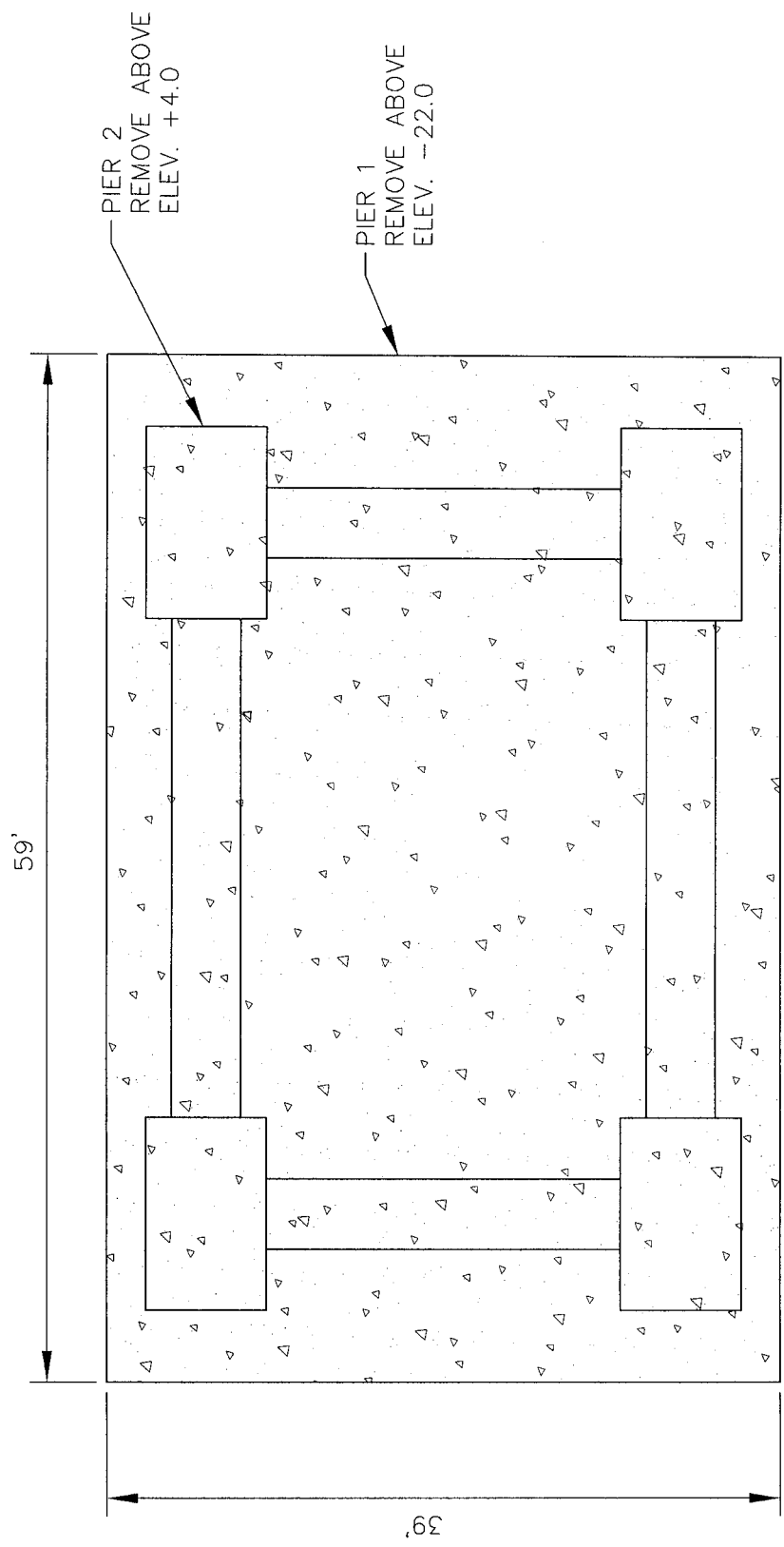
JANUARY 2010



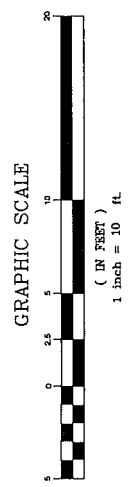
LA 1 IMPROVEMENTS  
GOLDEN MEADOW TO FOURCHON  
LAFOURCHE PARISH  
JOINT USE PERMIT APPLICATION

BAYOU LAFOURCHE BRIDGE REMOVAL





### PIERS 1 & 2 PLAN VIEW



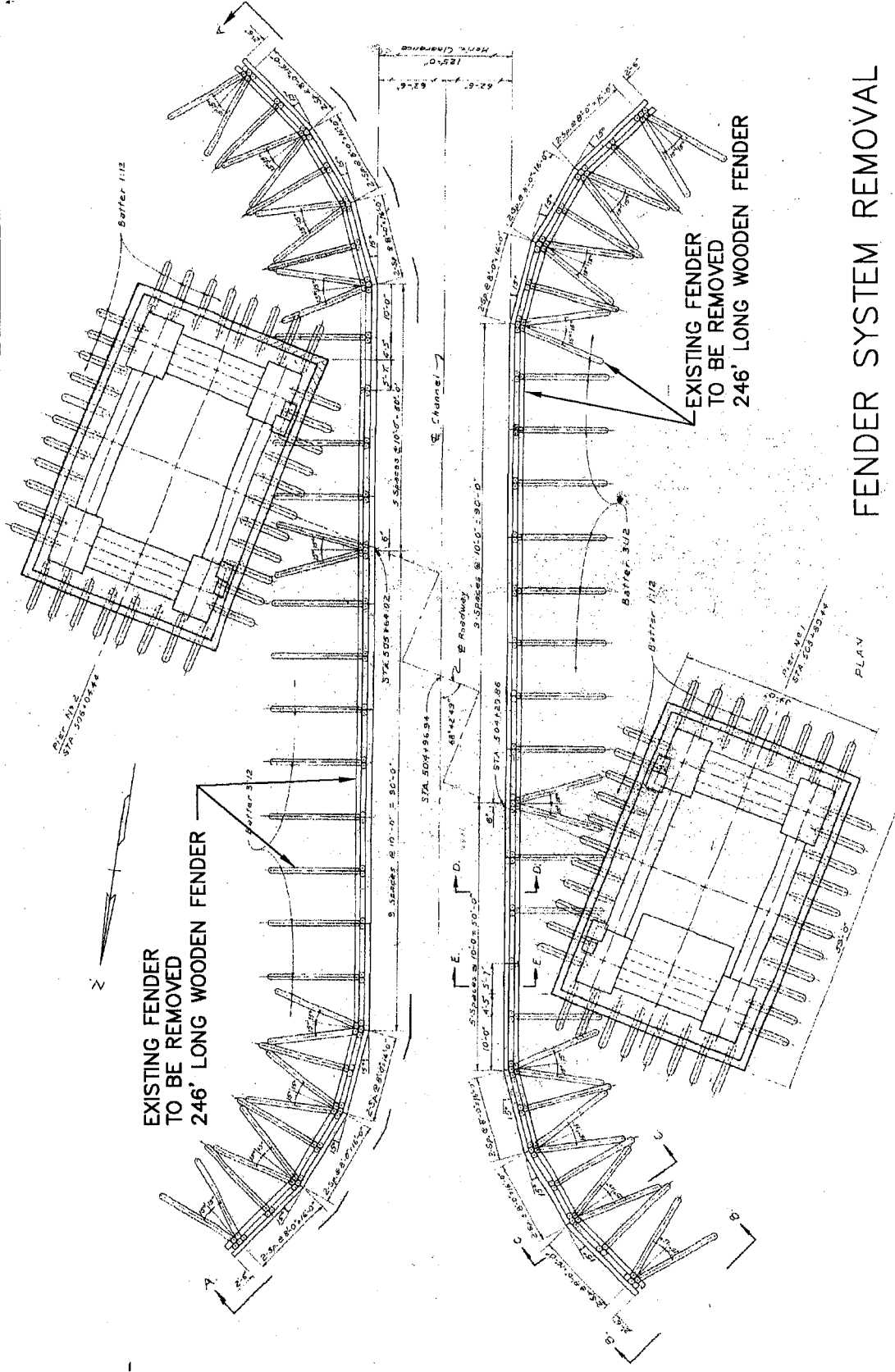
**LA 1 IMPROVEMENTS  
GOLDEN MEADOW TO FOURCHON  
LAFOURCHE PARISH  
JOINT USE PERMIT APPLICATION**

**BAYOU LAFOURCHE BRIDGE REMOVAL**



PARISH	LAFOURCHE
FEDERAL PROJECT	HP-NH-T021(002)
STATE PROJECT	700-29-0112
SHEET NUMBER	FIGURE 8

REV. 7-22-11 JULY 2009



# FENDER SYSTEM REMOVAL

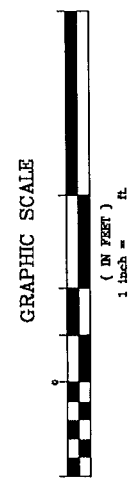
MODIFICATION 1

	PARISH	LAFOURCHE
	FEDERAL PROJECT	HP-NH-7021(002)
	STATE PROJECT	700-29-0112
	SHEET NUMBER	FIGURE 9



**LA 1 IMPROVEMENTS  
GOLDEN MEADOW TO FOURCHON  
LAFOURCHE PARISH  
JOINT USE PERMIT APPLICATION**

**BAYOU LAFOURCHE BRIDGE REMOVAL**



NOT TO SCALE

JANUARY 2010

**VOID**

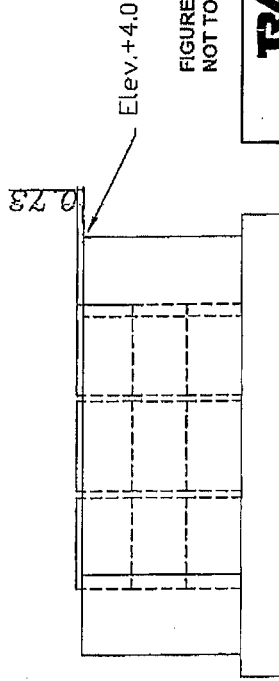
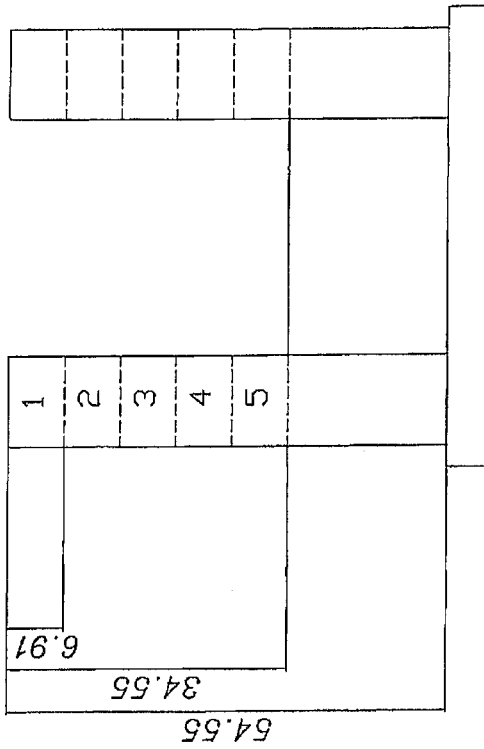
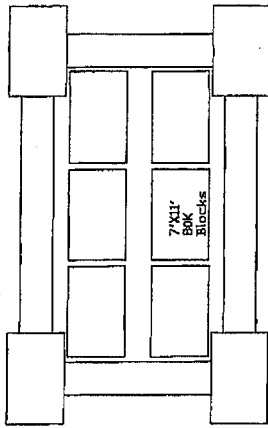
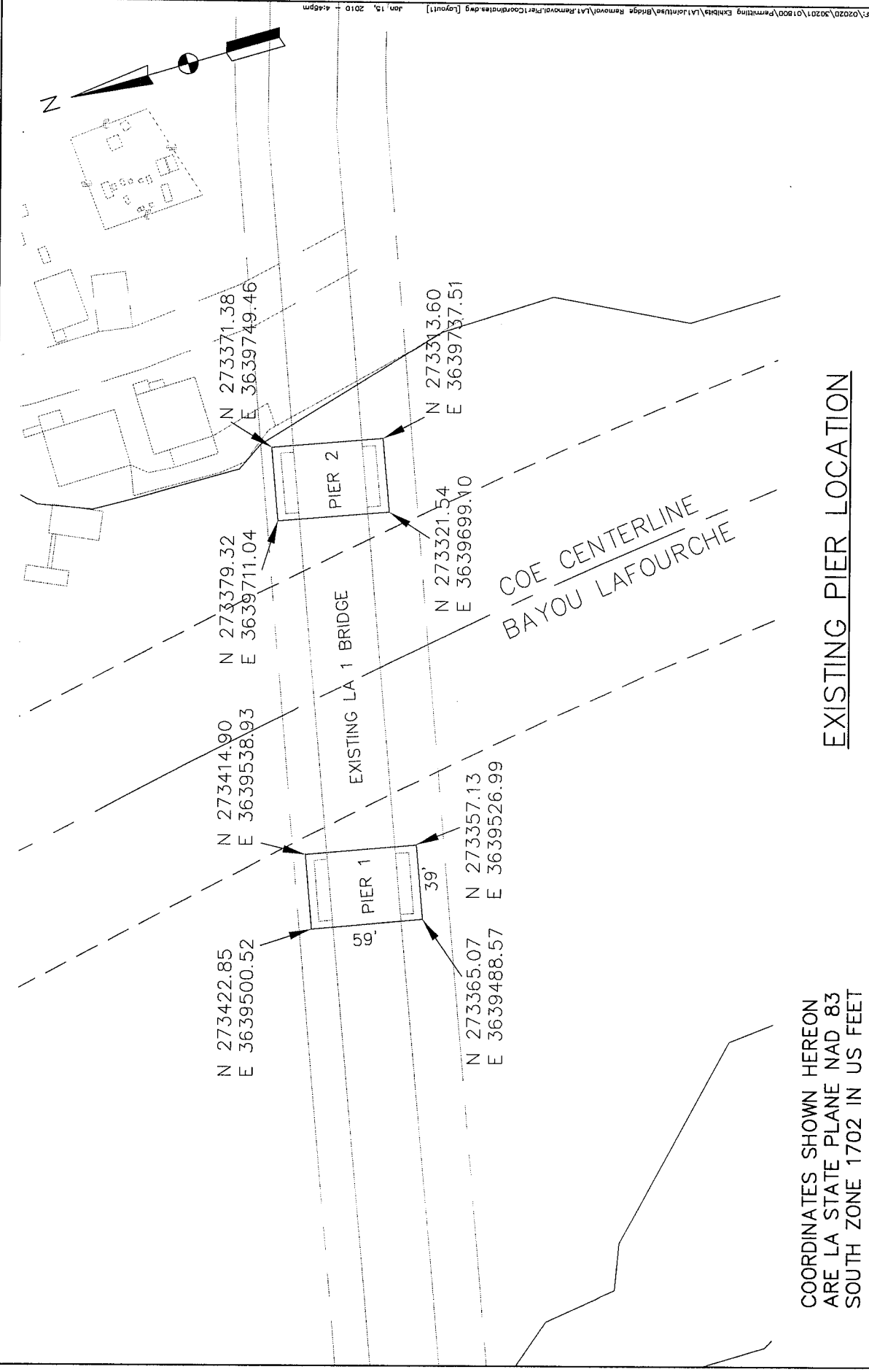


FIGURE 10  
NOT TO SCALE

**TAYLOR**  
TRAYLOR BROS., INC.

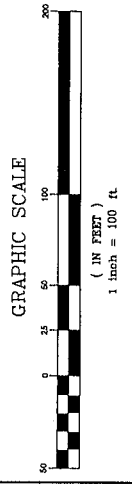
LA 1 RELOCATED  
Removal of Pier 2

DRG. BY W. Dabrowski	DATE 7/13/08	DESC. FILE NO. SCALE	DRG. NO.	SHEET 9	REV.
CHECKED BY					



COORDINATES SHOWN HEREON  
 ARE LA STATE PLANE NAD 83  
 SOUTH ZONE 1702 IN US FEET

**EXISTING PIER LOCATION**



**LA 1 IMPROVEMENTS  
 GOLDEN MEADOW TO FOURCHON  
 LAFOURCHE PARISH  
 JOINT USE PERMIT APPLICATION**

**BAYOU LAFOURCHE BRIDGE REMOVAL**



**MODIFICATION 1**

	PARISH	LAFOURCHE
	FEDERAL PROJECT	HP-NH-T021(002)
	STATE PROJECT	700-29-0112
	SHEET NUMBER	FIGURE 11

JANUARY 2010