

JOINT PUBLIC NOTICE

October 21, 2019

United States Army Corps of Engineers
New Orleans District
Regulatory Branch
7400 Leake Avenue
New Orleans, Louisiana 70118

State of Louisiana
Department of Environmental Quality
Water Permits Division
Post Office Box 4313
Baton Rouge, Louisiana 70821-4313

(504) 862-2675
Project Manager
Jamie Crowe
Jamie.M.Crowe@usace.army.mil
Permit Application Number
MVN 2019-00230 CO

(225) 219-3225
Project Manager
Elizabeth Hill

WQC Application Number
WQC 191016-02

Interested parties are hereby notified that a permit application has been received by the New Orleans District of the U.S. Army Corps of Engineers pursuant to:
[] Section 10 of the Rivers and Harbors Act of March 3, 1899 (30 Stat. 1151; 33 USC 403); and/or [X] Section 404 of the Clean Water Act (86 Stat. 816; 33 USC 1344).

Application has also been made to the Louisiana Department of Environmental Quality, Office of Environmental Services, for a Water Quality Certification (WQC) in accordance with statutory authority contained in LRS30:2047 A(3), and provisions of Section 401 of the Clean Water Act (P.L.95-17).

RESIDENTIAL SUBDIVISION IN ASCENSION PARISH

NAME OF APPLICANT: America Homeland, LLC, c/o D & S Environmental Services, Inc., Post Office Box 510, French Settlement, LA 70733.

LOCATION OF WORK: Adjacent to and south of Louisiana Highway 929, approximately 0.25 mile east of its intersection with Louisiana Highway 930, near Prairieville, Louisiana, in Ascension Parish; within the Lake Pontchartrian Basin, in the Amite River hydrologic unit (HUC 08070202).

CHARACTER OF WORK: The applicant has requested authorization to clear, grade, excavate, and fill an area to construct a 48-lot residential subdivision with pertinent houses, driveways, green space, recreational park, detention pond, discharge outfalls, sanitary sewer lift station, and ingress/egress access. Approximately 3,347.02 cubic yards of earthen material, 1,676.39 cubic yards of soil cement base, 1369.73 cubic yards of concrete, and 104.96 cubic yards of asphalt will be placed on-site. Approximately 6.2 acres of potentially jurisdictional wetlands will be impacted by this project. A jurisdictional determination for the proposed subdivision site is currently pending in the Corps' Surveillance and Enforcement Section. If additional jurisdictional

impacts are determined as a result of this determination, an addendum to this Public Notice shall be required.

According to the applicant, their goal was to design the subdivision to avoid all impacts to jurisdictional wetlands and waters. The applicant stated that avoidance of wetlands was not possible and would deem the project impractical because of the distribution of wetland/water resources, property dimensions, lack of expendable property, engineering constraints, and parish requirements. To minimize impacts to adjacent properties, the applicant will implement best management practices (BMP's), including silt fencing, hay bales, seeding, sediment check dams, etc., during and after construction to prevent erosion and degradation of water quality on-site and on-adjacent properties. After construction is complete, earthen material will be graded and seeded with the appropriate perennial mixture to help prevent erosion, turbidity, and degradation of water quality. To compensate for unavoidable wetland impacts, the applicant proposes to purchase wetland credits from a Corps approved mitigation bank located in the watershed.

The comment period for the Department of the Army Permit and the Louisiana Department of Environmental Quality WQC will close **20 days** from the date of this joint public notice. Written comments, including suggestions for modifications or objections to the proposed work, stating reasons thereof, are being solicited from anyone having interest in this permit and/or this WQC request and must be mailed, so as to be received before or by the last day of the comment period. Letters concerning the Corps of Engineers permit application must reference the applicant's name and the Permit Application Number, and be mailed to the Corps of Engineers at the address above, **ATTENTION: REGULATORY BRANCH**. The application for this proposed project is on file with the Louisiana Department of Environmental Quality and may be examined weekdays between 8:00 a.m. and 4:30 p.m. Copies may be obtained upon payment of costs of reproduction. Individuals or parties may request an extension of time in which to comment on the proposed work by writing or e-mailing the Corps of Engineers Project Manager listed above. Any request must be specific and substantively supportive of the requested extension, and received by this office prior to the end of the initial comment period. The Section Chief will review the request and the requestor will be promptly notified of the decision to grant or deny the request. If granted, the time extension will be continuous to the initial comment period and, inclusive of the initial comment period, will not exceed a total of 30 calendar days. Letters concerning the Water Quality Certification must reference the applicant's name and the WQC Application number and be mailed to the Louisiana Department of Environmental Quality at the address above.

Corps of Engineers Permit Criteria

The decision whether to issue a permit will be based on an evaluation of the probable impacts, including cumulative impacts of the proposed activity on the public interest. That decision will reflect the national concern for both protection and utilization of important resources. The benefit which reasonably may be expected to accrue from

the proposal must be balanced against its reasonably foreseeable detriments. All factors which may be relevant to the proposal will be considered including the cumulative effects thereof; among those are conservation, economics, aesthetics, general environmental concerns, wetlands, historic properties, fish and wildlife values, flood hazards, floodplain values, land use, navigation, shoreline erosion and accretion, recreation, water supply and conservation, water quality, energy needs, safety, food and fiber production, mineral needs, considerations of property ownership and, in general, the needs and welfare of the people.

The U.S. Army Corps of Engineers is soliciting comments from the public, federal, state, and local agencies and officials, Indian Tribes, and other interested parties in order to consider and evaluate the impacts of this proposed activity. Any comments received will be considered by the U.S. Army Corps of Engineers to determine whether to make, modify, condition, or deny a permit for this proposal. To make this decision, comments are used to assess impacts on endangered species, historic properties, water quality, general environmental effects, and other public interest factors listed above. Comments are used in the preparation of an Environmental Assessment and/or an Environmental Impact Statement pursuant to the National Environmental Policy Act. Comments are also used to determine the need for a public hearing and to determine the overall public interest of the proposed activity.

The New Orleans District is unaware of properties listed on the National Register of Historic Places near the proposed work. The possibility exists that the proposed work may damage or destroy presently unknown archeological, scientific, prehistorical, historical sites, or data. Copies of this notice are being sent to the State Archeologist and State Historic Preservation Officer.

Our initial finding is that the proposed work would not affect any species, nor affect any habitat designated as critical to the survival and recovery of such species, listed as endangered by the U.S. Department of Commerce.

This project was determined not likely to adversely affect the west Indian manatee (*Trichechus manatus*). The project was determined to have no effect on any other known endangered species. These determinations are based on Standard Local Operating Procedures for Endangered Species in Louisiana (SLOPES) dated October 22, 2014, between the US Army Corps of Engineers, New Orleans District and US Fish and Wildlife Service, Ecological Services Office.

This notice initiates the Essential Fish Habitat (EFH) consultation requirements of the Magnuson-Stevens Fishery Conservation and Management Act. The applicant's proposal would result in the destruction or alteration of n/a acres of EFH utilized by various life stages of red drum and penaeid shrimp. Our initial determination is that the proposed action would not have a substantial adverse impact on EFH or federally managed fisheries in the Gulf of Mexico. Our final determination relative to project impacts and the need for mitigation measures is subject to review by and coordination with the National Marine Fisheries Service.

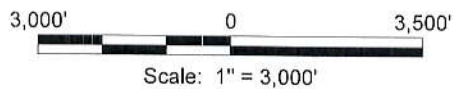
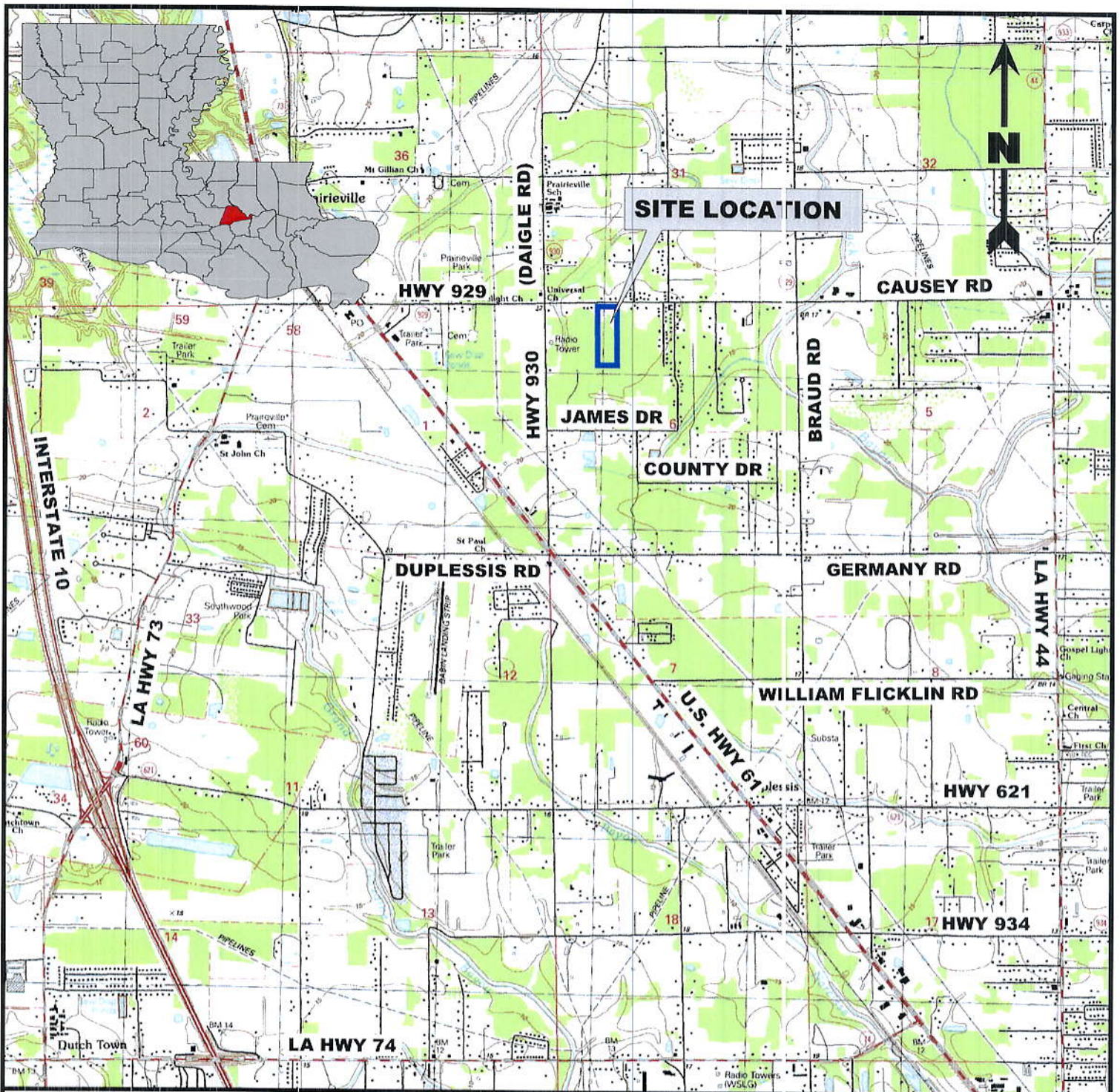
If the proposed work involves deposits of dredged or fill material into navigable waters, the evaluation of the probable impacts will include the application of guidelines established by the Administrator of the Environmental Protection Agency. Also, a certification that the proposed activity will not violate applicable water quality standards will be required from the Department of Environmental Quality, Office of Environmental Services, before a permit is issued.

Any person may request, in writing, within the comment period specified in this notice, that a public hearing be held to consider this application. Requests for public hearings shall state, with particularity, the reasons for holding a public hearing. You are requested to communicate the information contained in this notice to any other parties whom you deem likely to have interest in the matter.

You are requested to communicate the information contained in this notice to any other parties whom you deem likely to have interest in the matter.

John M. Herman
Chief, Central Evaluation Section
Regulatory Branch

Enclosure



Notes

Property is located in Section 6, T-9-S, R-3-E

Latitude: 30°17'49.92"N Longitude: 90°57'05.01"W

Reference

Base map comprised of U.S.G.S. 7.5 minute topographic map "Prairieville, LA".

America Homeland, L.L.C.

Christy Place

Vicinity Map

Assension Parish, Louisiana



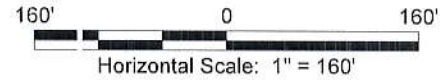
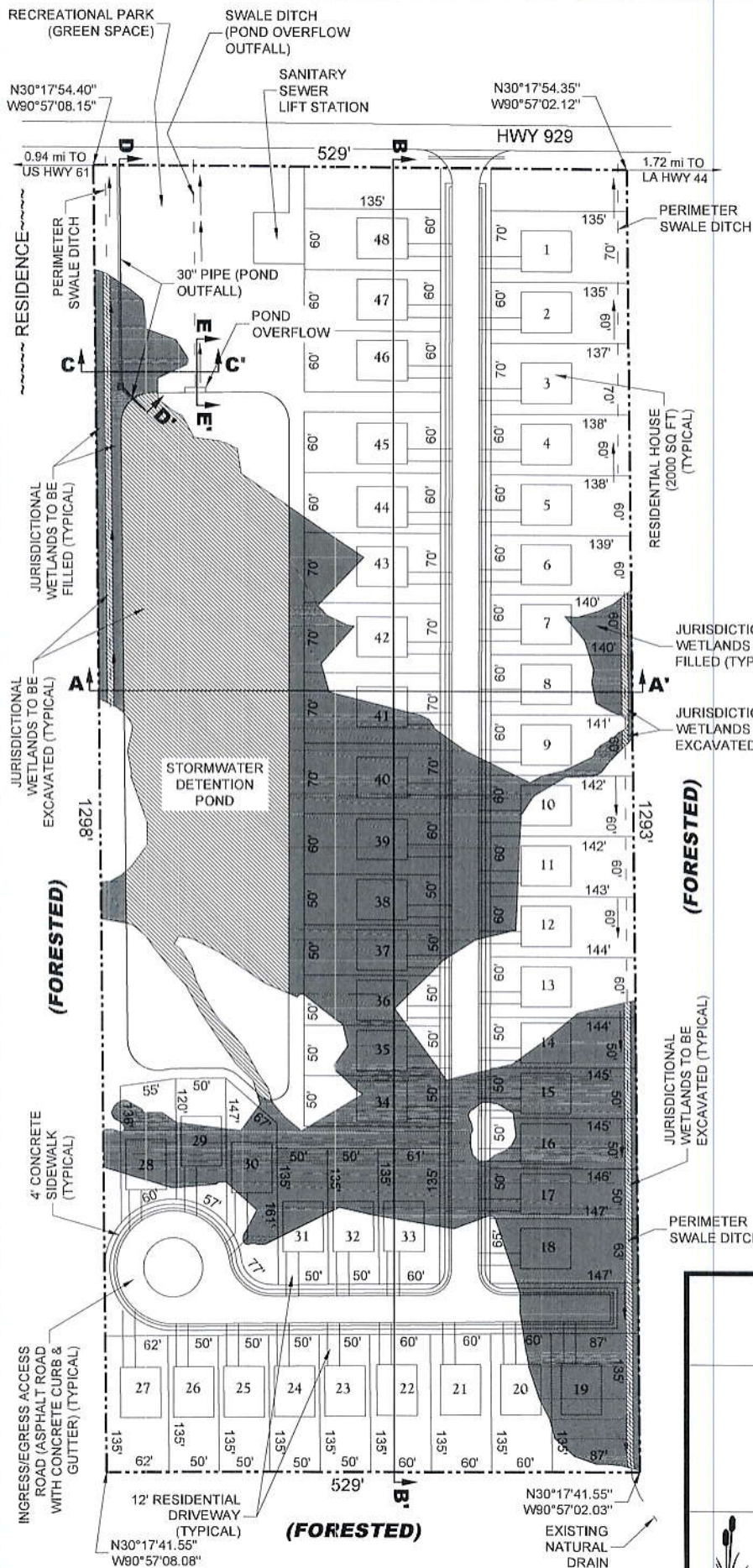
D & S
ENVIRONMENTAL SERVICES, INC.



Project No.: 12-2019 DOA

Date: 05-28-2019

Figure No.: 1



Total Fill

Approximately 3,347.02 Cubic Yards of Earthen Material.
 Approximately 1,676.39 Cubic Yards of Soil Cement Base.
 Approximately 1,369.73 Cubic Yards of Concrete.
 Approximately 104.96 Cubic Yards of Asphalt

Notes

- The layout was provided by Quality Engineering & Surveying, LLC.
- Jurisdictional Wetlands obtained from U.S. Army Corps of Engineers Preliminary Jurisdictional Determination Account Number MVN-2019-00230-SK.
- According to F.E.M.A. F.I.R.M. Community Panel No. 2: 005C0040E dated August 16, 2007, this property falls in Zone X (Areas determined to be outside the 0.2% annual chance floodplain). Adjacent Base Flood Elevation = 15'.
- Drainage features such as the stormwater detention pond and perimeter swale ditch will be deed restricted & maintained by the homeowners association.
- Wetland Impacts by habitat type:
 • Bottomland Hardwood = 6.23 Acres

Legend

- Property Boundary (15.73 Acres)
- Non-Wetlands (9.50 Acres)
- Total Jurisdictional Wetlands (6.23 Acres)
- ▨ Jurisdictional Wetlands To Be Excavated (2.08 Acres)
- Jurisdictional Wetlands To Be Filled (4.15 Acres)

America Homeland, L.L.C.

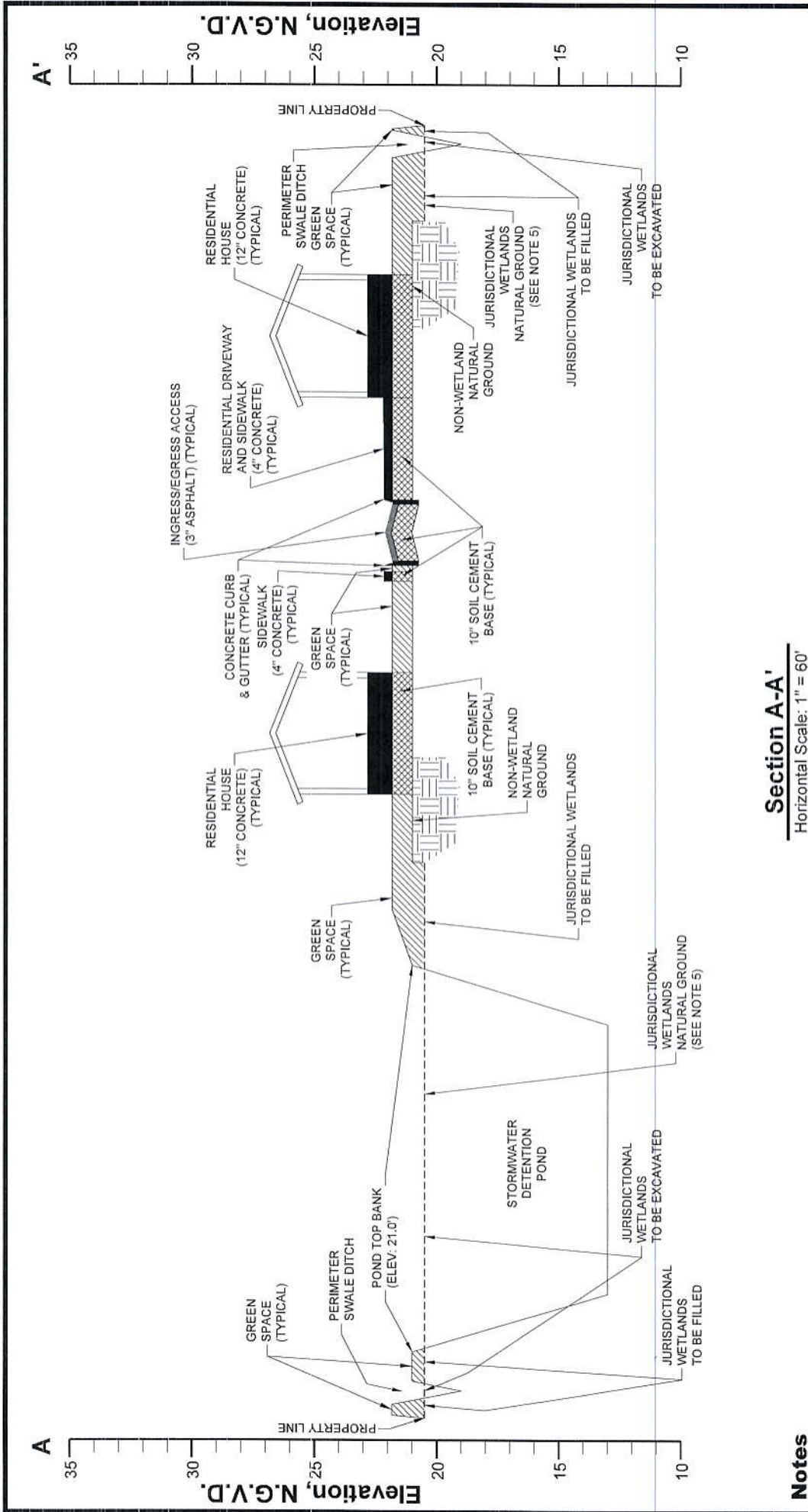
Christy Place

Proposed Plan View

Ascension Parish, Louisiana

D & S
 ENVIRONMENTAL SERVICES, INC.

Project No.: 12-2019 DOA Date: 05-28-2019 Figure No.: 2



Section A-A'

Horizontal Scale: 1" = 60'
Vertical Scale: 1" = 6'



Legend

	Earthen Material
	Soil Cement Base
	Concrete
	Asphalt

Notes

1. The layout was provided by Quality Engineering & Surveying, LLC.
2. Jurisdictional Wetlands obtained from U.S. Army CORPS of Engineers Preliminary Jurisdictional Determination Account Number MVN-2019-00230-SK.
3. According to F.E.M.A. F.I.R.M. Community Panel No. 22005C0040E dated August 16, 2007, this property falls in Zone X (Areas determined to be outside the 0.2% annual chance floodplain). Adjacent Base Flood Elevation = 15'.
4. Non-wetland natural ground elevations average 21'-0" N.G.V.D. Elevation data was obtained from topographic data provided by Quality Engineering & Surveying, LLC.
5. Natural Ground elevations in existing jurisdictional wetlands are approximately 6" lower than adjacent non-wetland ground elevations.

America Homeland, L.L.C.

Christy Place Section View A-A'

Ascension Parish, Louisiana

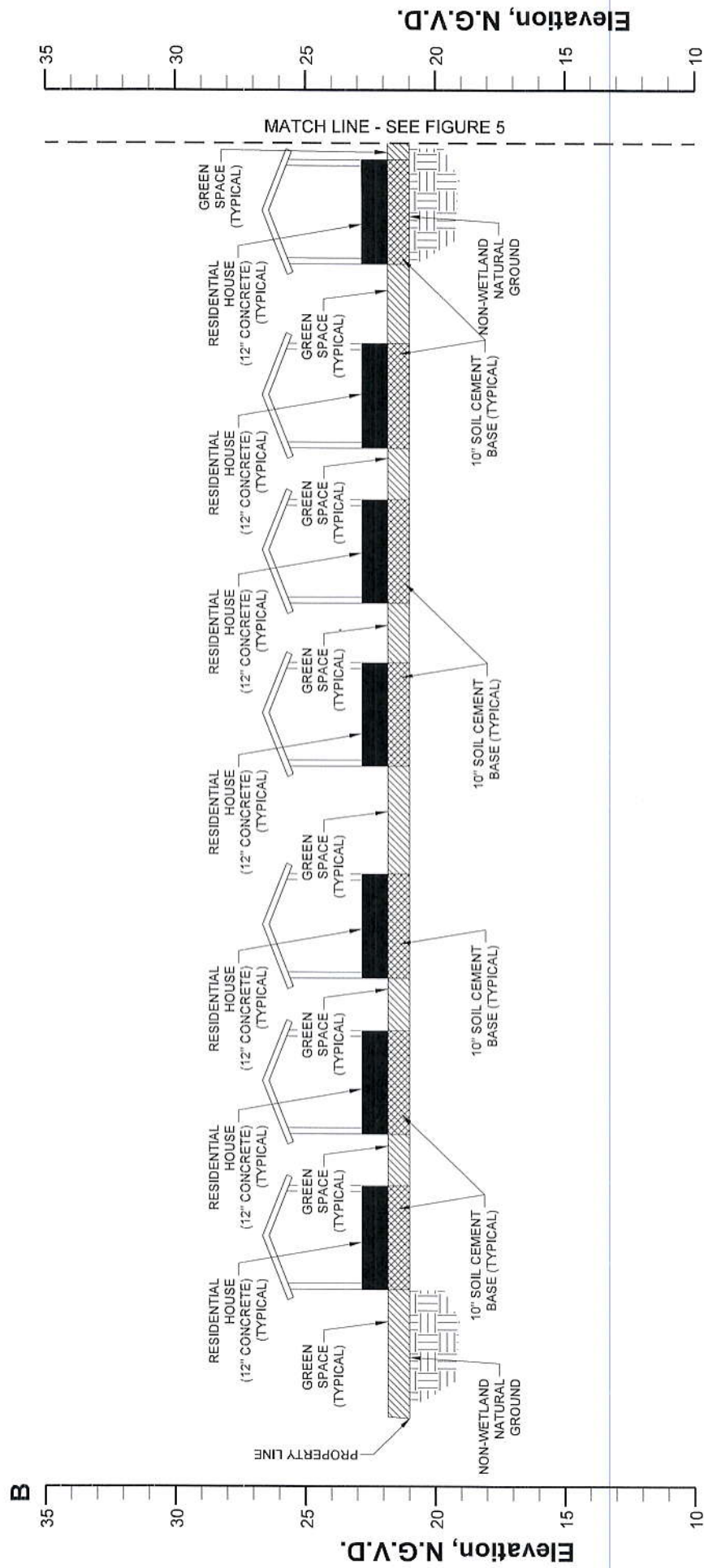
D & S
ENVIRONMENTAL SERVICES, INC.



Project No.: 12-2019-DOA

Date: 05-28-2019

Figure No.: 3



Section B-B'

Horizontal Scale: 1" = 60'
Vertical Scale: 1" = 6'



Legend

- Earthen Material
- Soil Cement Base
- Concrete

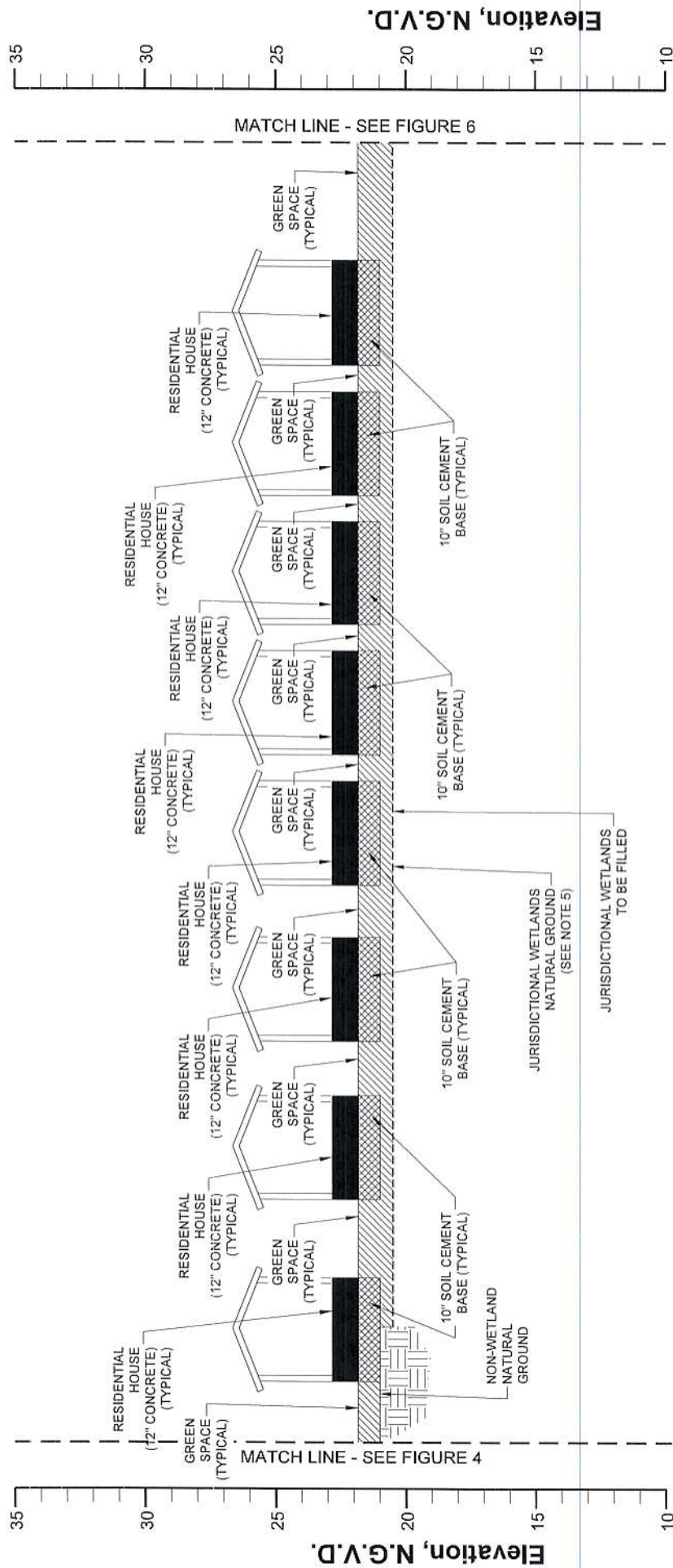
Notes

1. The layout was provided by Quality Engineering & Surveying, LLC.
2. Jurisdictional Wetlands obtained from U.S. Army CORPS of Engineers Preliminary Jurisdictional Determination Account Number MVN-2019-00230-SK.
3. According to F.E.M.A. F.I.R.M. Community Panel No. 22005C0040E dated August 16, 2007, this property falls in Zone X (Areas determined to be outside the 0.2% annual chance floodplain). Adjacent Base Flood Elevation = 15'.
4. Non-wetland natural ground elevations average 21'-0" N.G.V.D. Elevation data was obtained from topographic data provided by Quality Engineering & Surveying, LLC.
5. Natural Ground elevations in existing jurisdictional wetlands are approximately 6" lower than adjacent non-wetland ground elevations.

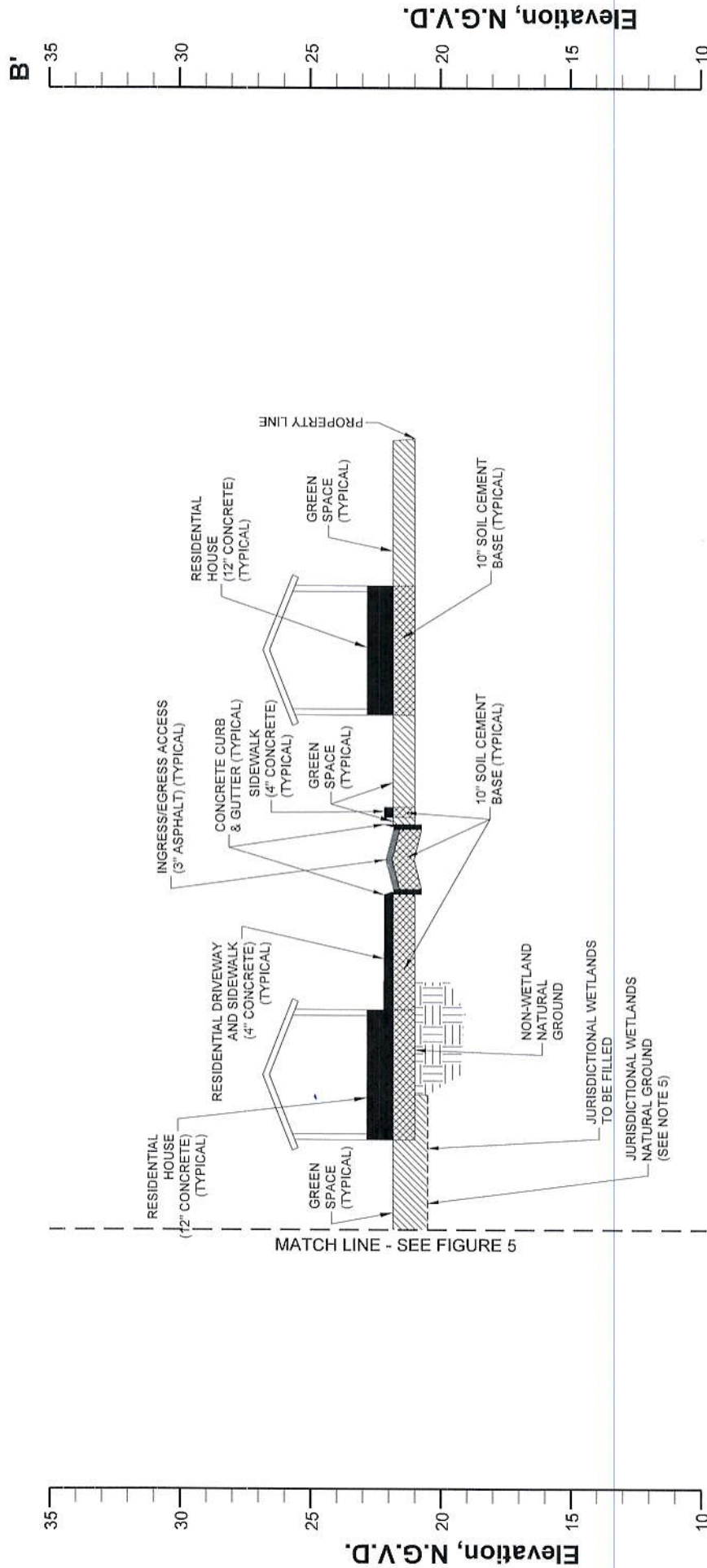
America Homeland, L.L.C.

**Christy Place
Section View B-B'**

Ascension Parish, Louisiana



5



Section B-B'

Horizontal Scale: 1" = 60'

Vertical Scale: 1" = 6'



Legend

	Earthen Material
	Soil Cement Base
	Concrete
	Asphalt

Notes

1. The layout was provided by Quality Engineering & Surveying, LLC.
2. Jurisdictional Wetlands obtained from U.S. Army CORPS of Engineers Preliminary Jurisdictional Determination Account Number MVN-2019-00230-SK.
3. According to F.E.M.A. F.I.R.M. Community Panel No. 22005C0040E dated August 16, 2007, this property falls in Zone X (Areas determined to be outside the 0.2% annual chance floodplain). Adjacent Base Flood Elevation = 15'.
4. Non-wetland natural ground elevations average 21'-0" N.G.V.D. Elevation data was obtained from topographic data provided by Quality Engineering & Surveying, LLC.
5. Natural Ground elevations in existing jurisdictional wetlands are approximately 6" lower than adjacent non-wetland ground elevations.

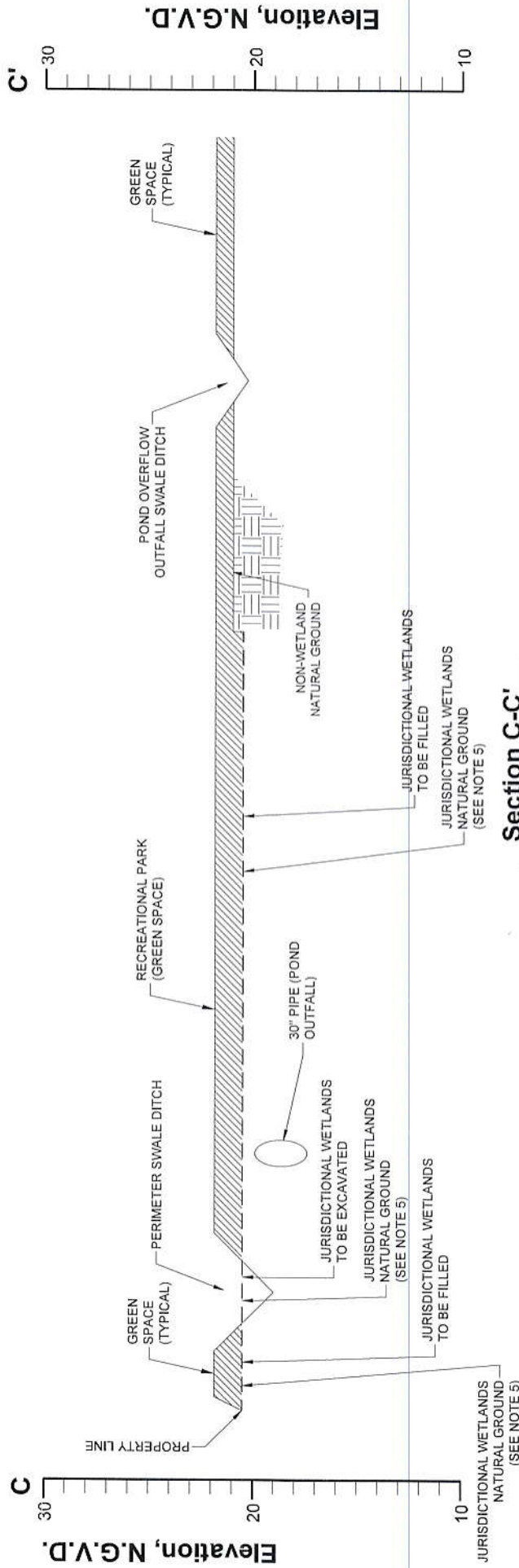
America Homeland, L.L.C.

Christy Place

Section View B-B'

(Continued)

Ascension Parish, Louisiana



Section C-C'

Horizontal Scale: 1" = 15'
Vertical Scale: 1" = 7.5'



Legend

Earthen Material

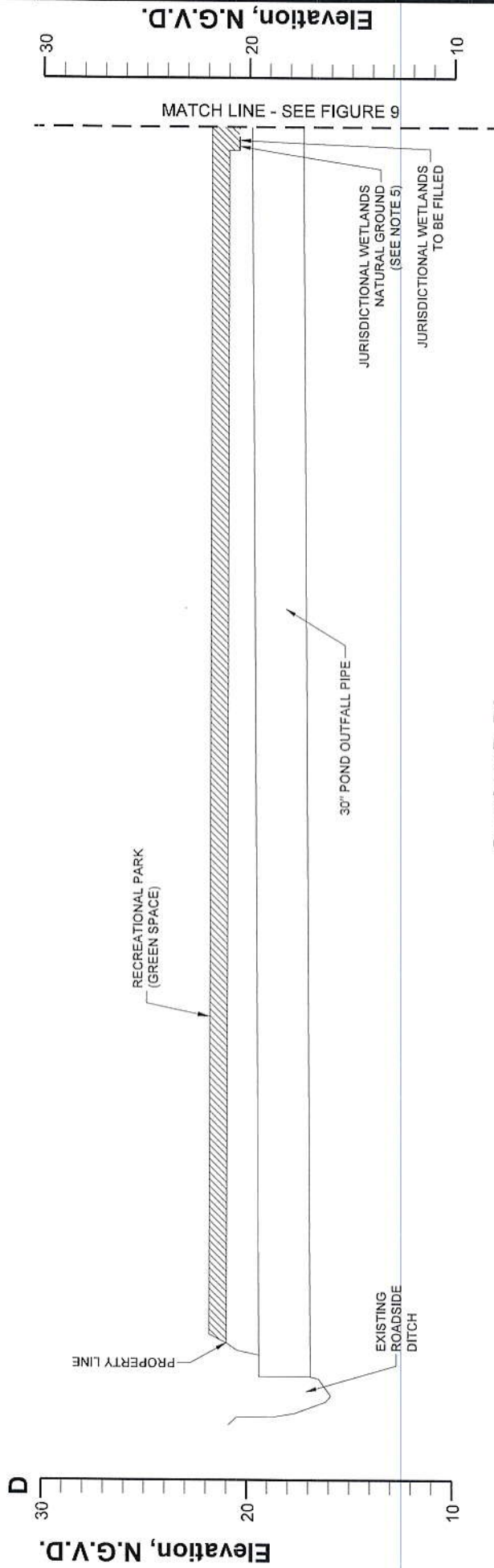
Notes

1. The layout was provided by Quality Engineering & Surveying, LLC.
2. Jurisdictional Wetlands obtained from U.S. Army CORPS of Engineers Preliminary Jurisdictional Determination Account Number MVN-2019-00230-SK.
3. According to F.E.M.A. F.I.R.M. Community Panel No. 22005C0040E dated August 16, 2007, this property falls in Zone X (Areas determined to be outside the 0.2% annual chance floodplain). Adjacent Base Flood Elevation = 15'.
4. Non-wetland natural ground elevations average 21'-0" N.G.V.D. Elevation data was obtained from topographic data provided by Quality Engineering & Surveying, LLC.
5. Natural Ground elevations in existing jurisdictional wetlands are approximately 6" lower than adjacent non-wetland ground elevations.

America Homeland, L.L.C.

Christy Place
Section View C-C'

Ascension Parish, Louisiana



Section D-D'

Horizontal Scale: 1" = 15'
Vertical Scale: 1" = 7.5'



Legend

Earth Material

Notes

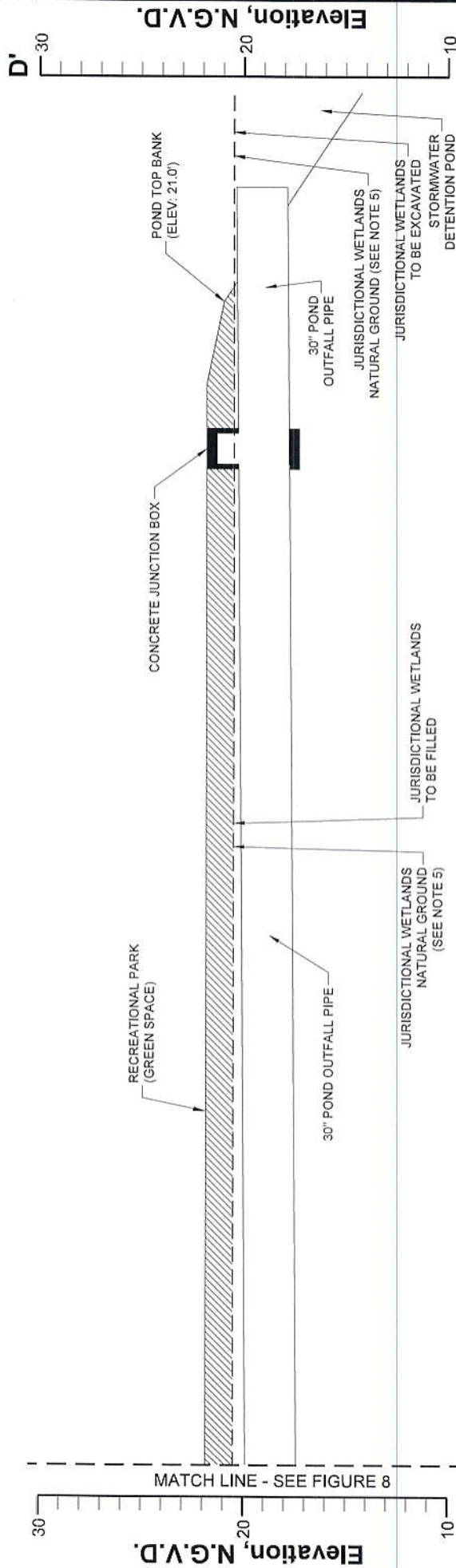
1. The layout was provided by Quality Engineering & Surveying, LLC.
2. Jurisdictional Wetlands obtained from U.S. Army CORPS of Engineers Preliminary Jurisdictional Determination Account Number MVN-2019-00230-SK.
3. According to F.E.M.A. F.I.R.M. Community Panel No. 22005C0040E dated August 16, 2007, this property falls in Zone X (Areas determined to be outside the 0.2% annual chance floodplain). Adjacent Base Flood Elevation = 15'.
4. Non-wetland natural ground elevations average 21'-0" N.G.V.D. Elevation data was obtained from topographic data provided by Quality Engineering & Surveying, LLC.
5. Natural Ground elevations in existing jurisdictional wetlands are approximately 6" lower than adjacent non-wetland ground elevations.

America Homeland, L.L.C.

Christy Place
Section View D-D'

Ascension Parish, Louisiana





Section D-D'

Horizontal Scale: 1" = 15'
Vertical Scale: 1" = 7.5'



Legend

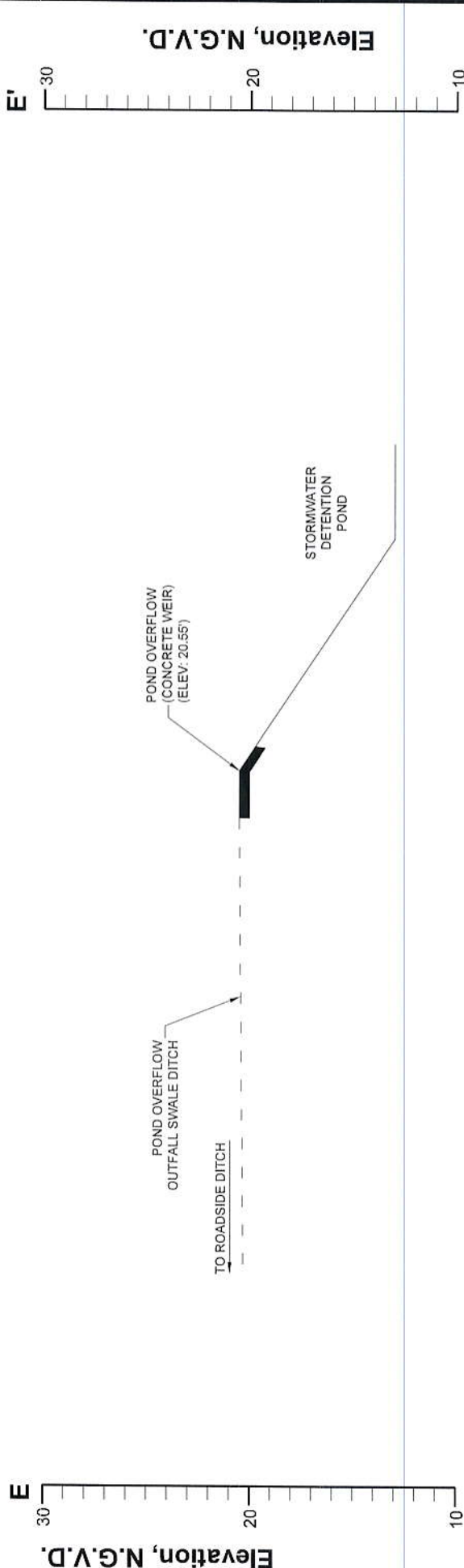
- Earth Material
- Concrete

Notes

- The layout was provided by Quality Engineering & Surveying, LLC.
- Jurisdictional Wetlands obtained from U.S. Army CORPS of Engineers Preliminary Jurisdictional Determination Account Number MVN-2019-00230-SK.
- According to F.E.M.A. F.I.R.M. Community Panel No. 22005C0040E dated August 16, 2007, this property falls in Zone X (Areas determined to be outside the 0.2% annual chance floodplain). Adjacent Base Flood Elevation = 15'.
- Non-wetland natural ground elevations average 21'-0" N.G.V.D. Elevation data was obtained from topographic data provided by Quality Engineering & Surveying, LLC.
- Natural Ground elevations in existing jurisdictional wetlands are approximately 6" lower than adjacent non-wetland ground elevations.

America Homeland, L.L.C.

Christy Place
Section View D-D'
(Continued)
Ascension Parish, Louisiana



Section E-E'

Horizontal Scale: 1" = 15'
Vertical Scale: 1" = 7.5'



Legend

Earthen Material

Notes

1. The layout was provided by Quality Engineering & Surveying, LLC.
2. Jurisdictional Wetlands obtained from U.S. Army CORPS of Engineers Preliminary Jurisdictional Determination Account Number MVN-2019-00230-SK.
3. According to F.E.M.A. F.I.R.M. Community Panel No. 22005C0040E dated August 16, 2007, this property falls in Zone X (Areas determined to be outside the 0.2% annual chance floodplain). Adjacent Base Flood Elevation = 15'.
4. Non-wetland natural ground elevations average 21'-0" N.G.V.D. Elevation data was obtained from topographic data provided by Quality Engineering & Surveying, LLC.
5. Natural Ground elevations in existing jurisdictional wetlands are approximately 6" lower than adjacent non-wetland ground elevations.

America Homeland, L.L.C.

Christy Place

Section View E-E'

Ascension Parish, Louisiana

D & S
ENVIRONMENTAL SERVICES, INC.