

JOINT PUBLIC NOTICE

November 21, 2016

United States Army
Corps of Engineers
New Orleans District
Regulatory Branch
7400 Leake Avenue
New Orleans, Louisiana 70118-3651

(504) 862-2284
Sara.B.Fortuna@usace.army.mil
Project Manager
Sara Fortuna
Permit Application Number
MVN-2015-01715-WKK

State of Louisiana
Department of Environmental Quality
ATTN: Water Quality Certifications
Post Office Box 4313
Baton Rouge, Louisiana 70821-4313

(225) 219-3225
Elizabeth.Hill@la.gov
Project Manager
Elizabeth Hill
WQC Application Number
WQC 161107-02

Interested parties are hereby notified that a permit application has been received by the New Orleans District of the U.S. Army Corps of Engineers pursuant to: [] Section 10 of the Rivers and Harbors Act of March 3, 1899 (30 Stat. 1151; 33 USC 403); and/or [X] Section 404 of the Clean Water Act (86 Stat. 816; 33 USC 1344).

Application has also been made to the Louisiana Department of Environmental Quality, Water Quality Certifications, for a Water Quality Certification (WQC) in accordance with statutory authority contained in LRS30:2047 A(3), and provisions of Section 401 of the Clean Water Act (P.L.95-17).

DRAINAGE IMPROVEMENTS IN LAFAYETTE PARISH

NAME OF APPLICANT: Lafayette Consolidated Government, 1515 East University Avenue, Lafayette, Louisiana 70502.

LOCATION OF WORK: Coulee Ile Des Cannes, along Highway 90, approximately 1.0 mile west of Scott, in Lafayette Parish, Louisiana, as shown on the enclosed drawings.

Location: Latitude: 30°13'56.65" N / Longitude: -92°06'46.17" W, Hydrologic Unit Code: 08080103 – Vermilion River Basin.

CHARACTER OF WORK: Conduct excavation activities to place approximately 103,000 cubic yards of earthen fill material, 16,314 cubic yards of flexible revetment, and 362 cubic yards of erosion matting to reshape channel, all to improve drainage in Coulee Ile Des Cannes. Project implementation would impact approximately 0.09 of an acre of jurisdictional herbaceous wetlands, 0.33 of an acre of jurisdictional bottomland hardwoods, and 5.8 acres of non-wetland waterbottoms. The applicant agrees to compensate for the 0.42 of an acre of wetland impacts by purchasing credits at a Department of the Army approved mitigation bank.

The comment period for the Department of the Army Permit and the Louisiana Department of Environmental Quality WQC will close **20 days** from the date of this joint public notice. Written comments, including suggestions for modifications or objections to the proposed work, stating reasons thereof, are being solicited from anyone having interest in this permit and/or this WQC request and must be mailed so as to be received before or by the last day of the comment period. Letters concerning the Corps of Engineers permit application must reference the applicant's name and the Permit Application Number, and be mailed to the Corps of Engineers at the address above, **ATTENTION: REGULATORY BRANCH**. **Similar letters concerning the Water Quality Certification must reference the applicant's name and the WQC Application number and be mailed to the Louisiana Department of Environmental Quality at the address above.**

Individuals or parties may request an extension of time in which to comment on the proposed work by writing or e-mailing the Corps of Engineers Project Manager listed above. Any request must be specific and substantively supportive of the requested extension, and received by this office prior to the end of the initial comment period. The Section Chief will review the request and the requestor will be promptly notified of the decision to grant or deny the request. If granted, the time extension will be continuous to the initial comment period and, inclusive of the initial comment period, will not exceed a total of 30 calendar days.

The application for this proposed project is on file with the Louisiana Department of Environmental Quality and may be examined during weekdays between 8:00 a.m. and 4:30 p.m. Copies may be obtained upon payment of costs of reproduction.

Corps of Engineers Permit Criteria

The decision whether to issue a permit will be based on an evaluation of the probable impacts, including cumulative impacts of the proposed activity on the public interest. That decision will reflect the national concern for both protection and utilization of important resources. The benefit which reasonably may be expected to accrue from the proposal must be balanced against its reasonably foreseeable detriments. All factors which may be relevant to the proposal will be considered including the cumulative effects thereof; among those are conservation, economics, aesthetics, general environmental concerns, wetlands, historic properties, fish and wildlife values, flood hazards, floodplain values, land use, navigation, shoreline erosion and accretion, recreation, water supply and conservation, water quality, energy needs, safety, food and fiber production, mineral needs, considerations of property ownership and, in general, the needs and welfare of the people.

The U.S. Army Corps of Engineers is soliciting comments from the public, federal, state, and local agencies and officials, Indian Tribes, and other interested parties in order to consider and evaluate the impacts of this proposed activity. Any comments received will be considered by the U.S. Army Corps of Engineers to determine whether to make, modify, condition, or deny a permit for this proposal. To make this decision, comments are used to assess impacts on endangered species, historic properties, water quality, general environmental effects, and other public interest factors listed above. Comments are used in the preparation of an Environmental Assessment and/or an Environmental Impact Statement pursuant to the National Environmental Policy Act. Comments are also used to determine the need for a public hearing and to determine the overall public interest of the proposed activity.

The New Orleans District is unaware of properties listed on the National Register of Historic Places near the proposed work. The possibility exists that the proposed work may damage or destroy presently unknown archeological, scientific, prehistorical, historical sites, or data. Issuance of this public notice solicits input from the State Archeologist and State Historic Preservation Officer regarding potential impacts to cultural resources.

Our initial finding is that the proposed work would neither affect any species listed as endangered by the U.S. Departments of Interior or Commerce, nor affect any habitat designated as critical to the survival and recovery of any endangered species. Utilizing Standard Local Operating Procedure for Endangered Species in Louisiana (SLOPES), dated October 22, 2014, between the U.S. Army Corps of Engineers, New Orleans and U.S. Fish and Wildlife Service, Ecological Services Office, the Corps has determined that the proposed activity would have no effect on any listed species.

This notice initiates the Essential Fish Habitat (EFH) consultation requirements of the Magnuson-Stevens Fishery Conservation and Management Act. The applicant's proposal would result in the destruction or alteration of **N/A** acres of EFH utilized by various life stages of red drum and penaeid shrimp. Our initial determination is that the proposed action would not have a substantial adverse impact on EFH or federally managed fisheries in the Gulf of Mexico. Our final determination relative to project impacts and the need for mitigation measures is subject to review by and coordination with the National Marine Fisheries Service.

If the proposed work involves deposits of dredged or fill material into navigable waters, the evaluation of the probable impacts will include the application of guidelines established by the Administrator of the Environmental Protection Agency. Also, a certification that the proposed activity will not violate applicable water quality standards will be required from the Department of Environmental Quality, Water Quality Certifications, before a permit is issued.

Any person may request, in writing, within the comment period specified in this notice, that a public hearing be held to consider this application. Requests for public hearings shall state, with particularity, the reasons for holding a public hearing.

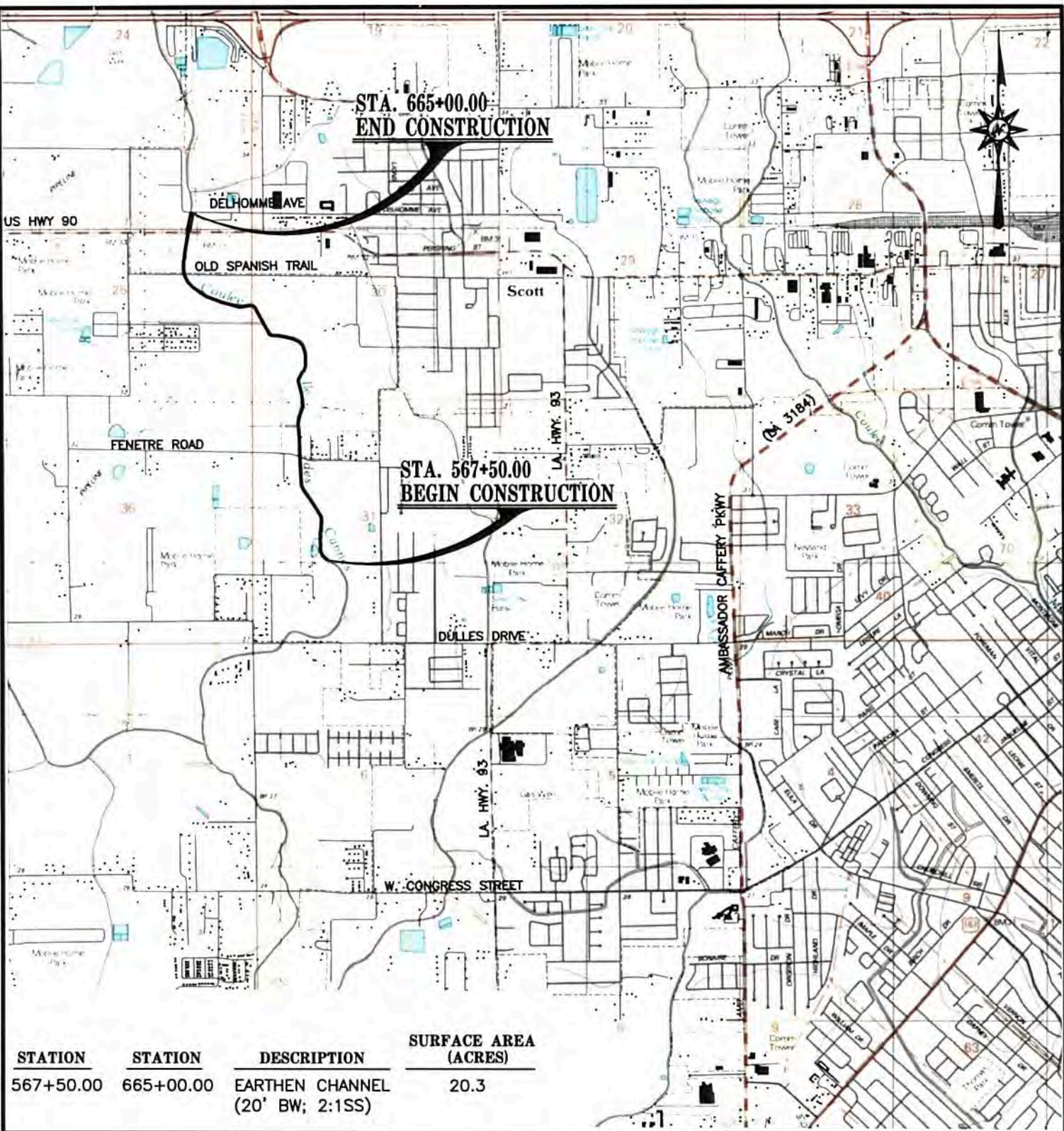
You are requested to communicate the information contained in this notice to any other parties whom you deem likely to have interest in the matter.

Darrell S. Barbara
Chief, Western Evaluation Section
Regulatory Branch

Enclosure

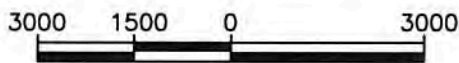
**STA. 665+00.00
END CONSTRUCTION**

**STA. 567+50.00
BEGIN CONSTRUCTION**



STATION	STATION	DESCRIPTION	SURFACE AREA (ACRES)
567+50.00	665+00.00	EARTHEN CHANNEL (20' BW; 2:1SS)	20.3

VICINITY MAP



SCALE: 1"=3000'

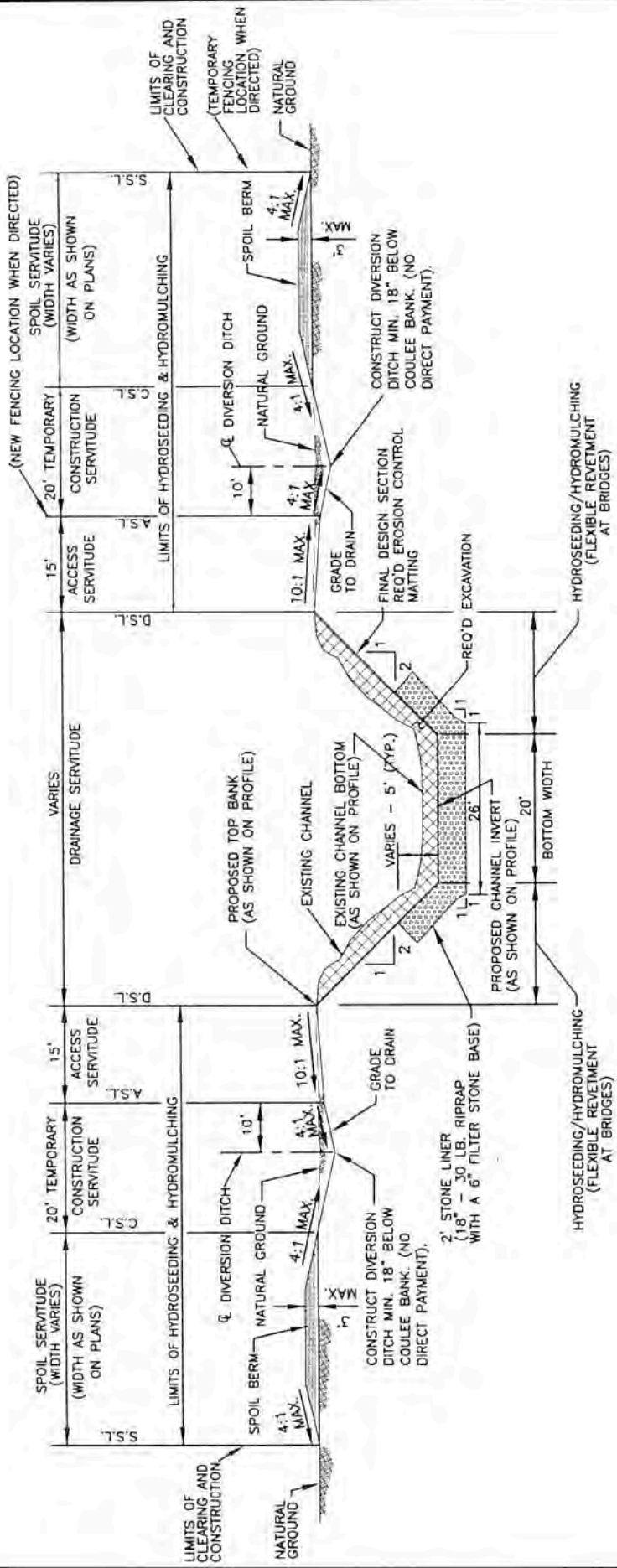
**DRAINAGE IMPROVEMENTS
TO COULEE ILE DES CANNES:
STA. 567+50 TO DELHOMME ROAD (STA. 665+00)
LAFAYETTE PARISH, LOUISIANA**

**APPLICANT: LAFAYETTE CITY-PARISH
CONSOLIDATED GOVERNMENT**

**SOURCE: LAFAYETTE QUAD
7.5 MINUTE SERIES, 1983.**

DATE: APRIL, 2014

EXHIBIT: 1 OF 7



TYPICAL SECTION OF PROPOSED CHANNEL

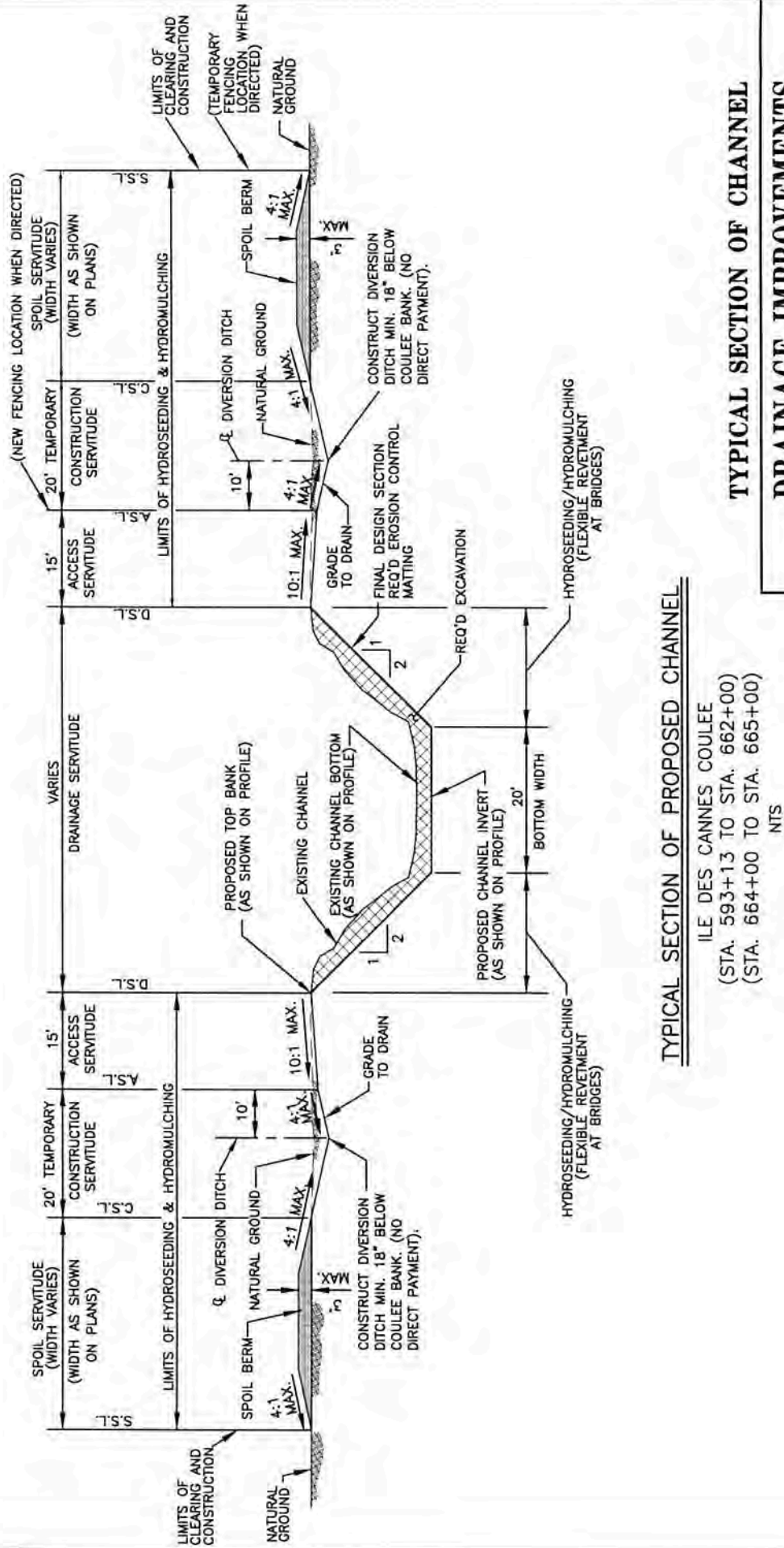
ILE DES CANNES COULEE
 (STA. 567+50 TO STA. 593+13)
 (STA. 662+00 TO STA. 664+00)
 NTS

TYPICAL SECTION OF CHANNEL

**DRAINAGE IMPROVEMENTS
 TO COULEE ILE DES CANNES:
 STA. 567+50 TO DELHOMME ROAD (STA. 665+00)**
 LAFAYETTE PARISH, LOUISIANA
 APPLICANT: LAFAYETTE CITY-PARISH
 CONSOLIDATED GOVERNMENT

DATE: AUGUST, 2015

EXHIBIT: 2 OF 7



TYPICAL SECTION OF PROPOSED CHANNEL

ILE DES CANNES COULEE
 (STA. 593+13 TO STA. 662+00)
 (STA. 664+00 TO STA. 665+00)

NTS

TYPICAL SECTION OF CHANNEL

**DRAINAGE IMPROVEMENTS
 TO COULEE ILE DES CANNES:**

STA. 567+50 TO DELHOMME ROAD (STA. 665+00)

LAFAYETTE PARISH, LOUISIANA

**APPLICANT: LAFAYETTE CITY-PARISH
 CONSOLIDATED GOVERNMENT**

DATE: AUGUST, 2015

EXHIBIT: 3 OF 7

SIDE SLOPE PROTECTION AT CURVES	
INSIDE ANGLE (Δ)	TYPE OF PROTECTION
0 - 15°	EROSION MATTING EROSION MATTING
15° - 30°	EROSION MATTING REVETMENT
> 30°	REVELMENT REVETMENT

BROKEN BACK CURVES: WHEN TWO CONSECUTIVE CURVES HAVING THE SAME DIRECTION ARE SEPARATED BY A SHORT TANGENT (60' OR LESS); ADD THE TWO DELTAS AND TREAT BOTH CURVES AS A COMBINED CURVE WHEN USING THE TABLE ABOVE.

FLEXIBLE REVETMENT SHALL BE RIPRAP STONE (CLASS 30), CELLULAR CONCRETE BLOCK, OR ABM.

EROSION MATTING SHALL BE TYPE C (LADOTD) ROLLED EROSION CONTROL FOR SHEAR STRESSES RANGING FROM 0 TO 2 PSF.

EROSION MATTING TO BE PLACED ALONG CHANNEL SLOPES (ANCHORING AT TOE AND AT TOP BANK) AT ALL LOCATIONS WHERE FLEXIBLE REVETMENT IS NOT PLACED

AT LOCATIONS WHERE 2' STONE LINER IS PLACED, FLEXIBLE REVETMENT SHALL EXTEND FOR THE FULL LENGTH OF THE CROSS SECTION (TOP BANK TO TOP BANK).

HYDROSEEDING AND HYDROMULCHING

EXTEND REVETMENT 2.0' ON TOP OF BANK

FLEXIBLE REVETMENT THICKNESS OF STONE REVETMENT TO BE 18" ± CLASS 30 STONES TO BE USED.

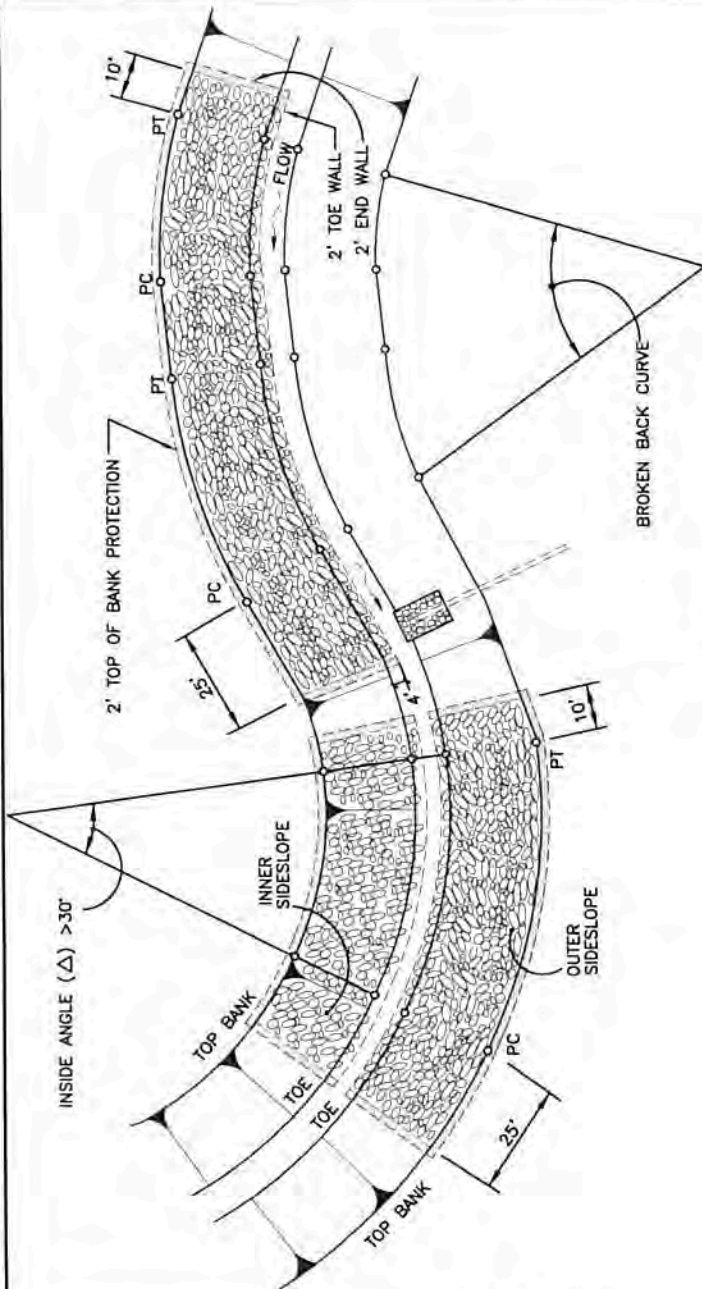
EXCAVATED SLOPE
6" COMPACTED FILTER STONE BASE (GRADE A-SIZE 57)

GEOTEXTILE FABRIC (CLASS D) (NO DIRECT PAY)

GRADE AS SHOWN ON PROFILE
EXCAVATED BOTTOM
MINIMUM 4"

TYPICAL SECTION

SIDE SLOPE EROSION PROTECTION
TO BE USED AS DESIGNATED IN THE TABLE ABOVE (RIP RAP STONE REVETMENT SHOWN, HOWEVER CONTRACTOR HAS THE OPTION OF CELLULAR CONC. BLOCK OR ABM)



PLAN VIEW

TYPICAL REVETMENT PLACEMENT DETAILS

REACH	FLEXIBLE REVETMENT (SQ.YDS.)
STA. 567+50.00 TO 665+00.00 (CHANNEL)	38,750
STA. 567+50.00 TO 665+00.00 (PIPE DROPS)	3,200

TYPICAL REVETMENT PLACEMENT

DRAINAGE IMPROVEMENTS TO COULEE ILE DES CANNES:
STA. 567+50 TO DELHOMME ROAD (STA. 665+00)
 LAFAYETTE PARISH, LOUISIANA
 APPLICANT: LAFAYETTE CITY-PARISH CONSOLIDATED GOVERNMENT
 DATE: AUGUST, 2014 EXHIBIT: 4 OF 7

HYDROSEEDING AND HYDROMULCHING

1. PROVIDE A FLEXIBLE RUBBER GASKET (i.e. "O" RING, RAMNECK) OR APPROVED EQUAL AT THE LAST JOINT TO PREVENT LEAKS DUE TO DIFFERENTIAL SETTLEMENTS.
2. WRAP ALL JOINTS WITH 12" WIDTH GEOTEXTILE.

PROPOSED PIPE CORRUGATED ALUMINUM PIPE (12 GAGE) OR RIBBED PVC CULVERT PIPE

EROSION CONTROL MATTING

*

REVETMENT (EXTEND 10' EACH SIDE OF PIPE)

PROJECT PIPE 1" FROM BANK

GRADE AS SHOWN ON PROFILE

TOE AS SHOWN ON PLANS

GEOTEXTILE FABRIC (NO DIRECT PAYMENT)

EXCAVATED SLOPE

IF REQ'D BY FLEXIBLE REVETMENT, BASE SHALL BE A 6" FILTER STONE BASE (GRADE A-57) OVER GEOTEXTILE FABRIC (CLASS D)

GROUT 1" DEEP AND 1/3 DIAMETER BENEATH PIPE TO PROVIDE SMOOTH BEDDING SURFACE FOR THE PIPE (NO DIRECT PAY.)

TYPICAL SECTION

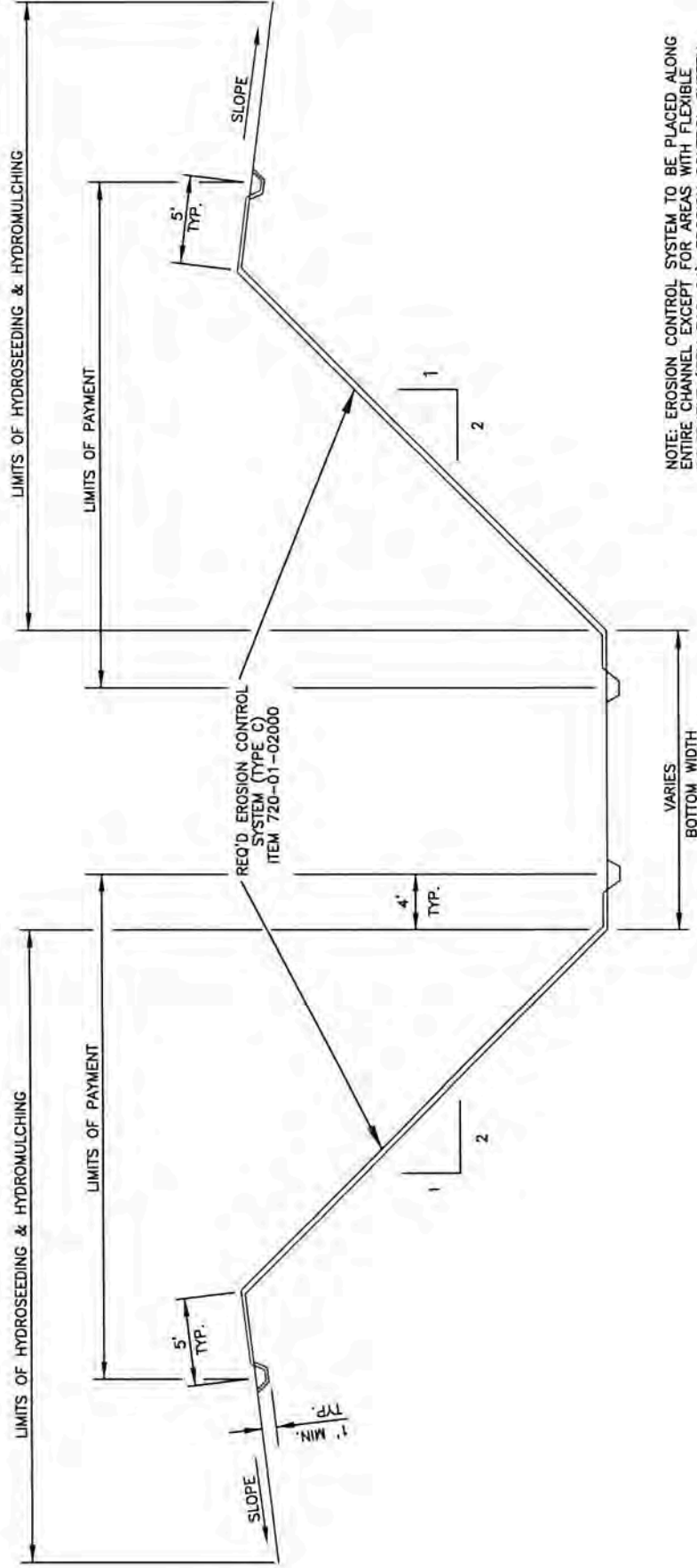
FLEXIBLE REVETMENT FOR EROSION PROTECTION AT COLLECTION PIPE END

ESTIMATED END PIPE REVETMENT AREA	
PIPE DIAMETER (IN)	SURFACE AREA (SQ. YD)
15"	68.9
18"	71.0
24"	75.4
36"	84.5
48"	94.1
54"	99.1

* FOR PIPES 24" OR LARGER NOT PENETRATING A REVETMENT, PROVIDE REVETMENT AS SHOWN.

DRAINAGE IMPROVEMENTS TO COULEE ILE DES CANNES: STA. 567+50 TO DELHOMME ROAD (STA. 665+00)
LAFAYETTE PARISH, LOUISIANA
 APPLICANT: LAFAYETTE CITY-PARISH CONSOLIDATED GOVERNMENT

DATE: APRIL, 2014 EXHIBIT: 5 OF 7



NOTE: EROSION CONTROL SYSTEM TO BE PLACED ALONG ENTIRE CHANNEL EXCEPT FOR AREAS WITH FLEXIBLE REVETMENT (ITEM 712-04). EROSION CONTROL SYSTEM TO HAVE WRITTEN APPROVAL FROM MANUFACTURER FOR USE ON 2:1 SIDESLOPES.

TYPICAL SECTION OF
EROSION CONTROL MATTING

EROSION MATTING
(SQ. YDS.)

52,090

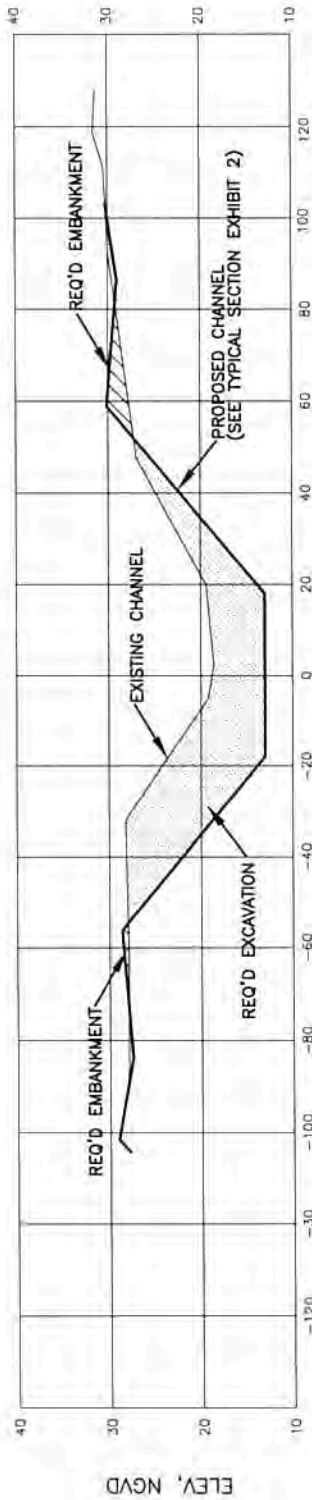
REACH

STA. 567+50.00 TO 665+00.00 (CHANNEL)

**DRAINAGE IMPROVEMENTS
TO COULEE ILE DES CANNES:
STA. 567+50 TO DELHOMME ROAD (STA. 665+00)**

LAFAYETTE PARISH, LOUISIANA
APPLICANT: LAFAYETTE CITY-PARISH
CONSOLIDATED GOVERNMENT

DATE: AUGUST, 2014 EXHIBIT: 6 OF 7



TYPICAL PROPOSED EARTHEN SECTION
 (STA. 567+50.00 TO STA. 665+00.00)
 SCALE: HORIZ.: 1"=40'-0"
 VERT.: 1"=20'-0"

REACH
 STA. 567+50.00 TO 665+00.00
 10-YR. DESIGN WSEL
 25.97 TO 28.98

EARTHWORK QUANTITIES
REACH
 STA. 567+50.00 TO 665+00.00
 EXCAVATION (CU. YD.)
 (IN PLACE MEASUREMENT) 168,573
 EMBANKMENT (CU. YD.)
 (IN PLACE MEASUREMENT) 5,337

TYPICAL CHANNEL CROSS SECTION

**DRAINAGE IMPROVEMENTS
 TO COULEE ILE DES CANNES:
 STA. 567+50 TO DELHOMME ROAD (STA. 665+00)**
 LAFAYETTE PARISH, LOUISIANA
 APPLICANT: LAFAYETTE CITY-PARISH
 CONSOLIDATED GOVERNMENT

DATE: APRIL, 2014 EXHIBIT: 7 OF 7