

JOINT PUBLIC NOTICE

June 16, 2014

United States Army
Corps of Engineers
New Orleans District
Attn: Regulatory Branch
Post Office Box 60267
New Orleans, Louisiana 70160-0267

Project Manager: Donald Rodrigue
(504) 862-1445 / fax: (504) 862-2574
Donald.a.rodrigue@usace.army.mil
Permit Application Number:
MVN-2014-01440-WOO

Interested parties are hereby notified that a permit application has been received by the New Orleans District of the U.S. Army Corps of Engineers pursuant to: [X] Section 10 of the Rivers and Harbors Act of March 3, 1899 (30 Stat. 1151; 33 USC 403); and/or [] Section 404 of the Clean Water Act (86 Stat. 816; 33 USC 1344).

PIPELINE ABANDONMENT IN THE GULF OF MEXICO

NAME OF APPLICANT: Union Oil Company of California, Attn: Dustin Snider, 100 Northpark Blvd., Covington, Louisiana 70401.

LOCATION OF WORK: In the Gulf of Mexico, in the Trans-Gulf Safety Fairway, within Garden Banks Block 189, approximately 110 nautical miles south of Cameron Parish, Louisiana, as shown on the attached vicinity map.

CHARACTER OF WORK: Clean, cap and abandon 4,325 feet of an existing six inch pipeline in the Trans-Gulf Safety Fairway between latitude 27° 46' 56.229"/longitude -93° 18' 18.724" and latitude 27° 46' 59.393"/longitude -93° 17' 34.780". Water depths range from 750 feet to 1,350 feet and the pipe, currently laying on the waterbottom, is proposed to remain in-place.

The comment period for the Department of the Army Permit will close **15 days** from the date of this joint public notice. Written comments, including suggestions for modifications or objections to the proposed work, stating reasons thereof, are being solicited from anyone having interest in this permit and must be submitted so as to be received before or by the last day of the comment period. Letters concerning the Corps of Engineers permit application must reference the applicant's name and the Permit Application Number, and be forwarded to the Corps of Engineers at the address above, **ATTENTION: REGULATORY BRANCH**. Individuals or parties may request an extension of time in which to comment on the proposed work by writing, faxing, or e-mailing the Corps of Engineers Project Manager listed above. Any request must be specific and substantively supportive of the requested extension, and received by this office prior to the end of the initial comment period. The Section Chief will review the request and the requestor will be promptly notified of the decision to grant or deny the request.

If granted, the time extension will be continuous to the initial comment period and, inclusive of the initial comment period, will not exceed a total of 25 calendar days.

Corps of Engineers Permit Criteria

The decision whether to issue a permit will be based on an evaluation of the probable impacts, including cumulative impacts of the proposed activity on the public interest. That decision will reflect the national concern for both protection and utilization of important resources. The benefit which reasonably may be expected to accrue from the proposal must be balanced against its reasonably foreseeable detriments. All factors which may be relevant to the proposal will be considered including the cumulative effects thereof; among those are conservation, economics, aesthetics, general environmental concerns, wetlands, historic properties, fish and wildlife values, flood hazards, floodplain values, land use, navigation, shoreline erosion and accretion, recreation, water supply and conservation, water quality, energy needs, safety, food and fiber production, mineral needs, considerations of property ownership and, in general, the needs and welfare of the people.

The U.S. Army Corps of Engineers is soliciting comments from the public, federal, state, and local agencies and officials, Indian Tribes, and other interested parties in order to consider and evaluate the impacts of this proposed activity. Any comments received will be considered by the U.S. Army Corps of Engineers to determine whether to make, modify, condition, or deny a permit for this proposal. To make this decision, comments are used to assess impacts on endangered species, historic properties, water quality, general environmental effects, and other public interest factors listed above. Comments are used in the preparation of an Environmental Assessment and/or an Environmental Impact Statement pursuant to the National Environmental Policy Act. Comments are also used to determine the need for a public hearing and to determine the overall public interest of the proposed activity.

The New Orleans District is unaware of properties listed on the National Register of Historic Places near the proposed work. The possibility exists that the proposed work may damage or destroy presently unknown archeological, scientific, prehistorical, historical sites, or data. Issuance of this public notice solicits input from the State Archeologist and State Historic Preservation Officer regarding potential impacts to cultural resources.

Our initial finding is that the proposed work would neither affect any species listed as endangered by the U.S. Departments of Interior or Commerce, nor affect any habitat designated as critical to the survival and recovery of any endangered species.

This notice initiates the Essential Fish Habitat (EFH) consultation requirements of the Magnuson-Stevens Fishery Conservation and Management Act. The applicant's proposal may result in the destruction or alteration of 0.0 acres of EFH utilized by various life stages of red drum and penaeid shrimp. Our initial determination is that the proposed action would not have a substantial adverse impact on EFH or federally managed fisheries in the Gulf of Mexico. Our final determination relative to project impacts and the need for mitigation measures is subject to review by and coordination with the National Marine Fisheries Service.

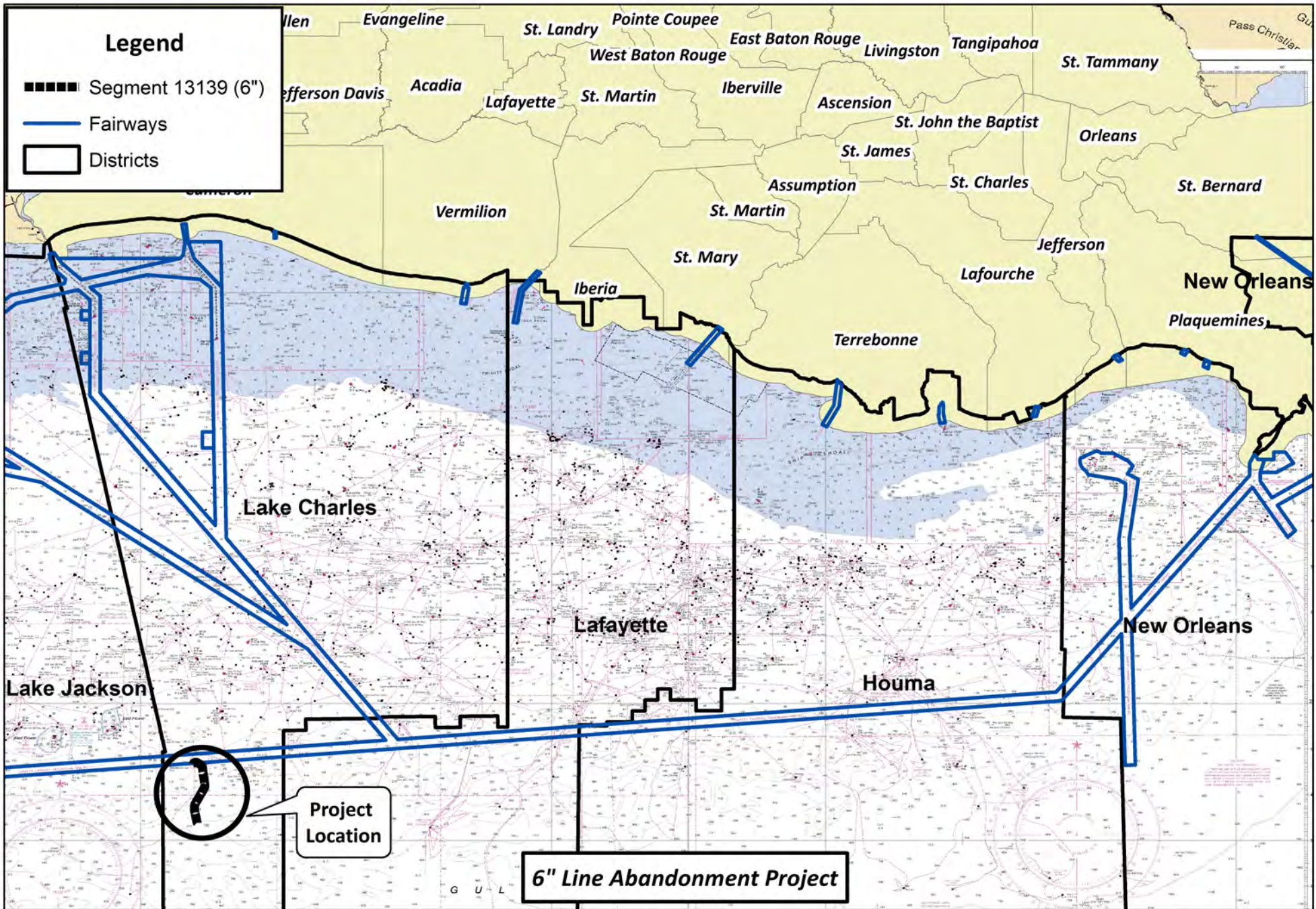
Any person may request, in writing, within the comment period specified in this notice, that a public hearing be held to consider this application. Requests for public hearings shall state, with particularity, the reasons for holding a public hearing.

You are requested to communicate the information contained in this notice to any other parties whom you deem likely to have interest in the matter.

0
2
[Redacted]

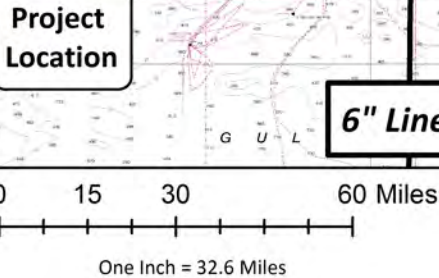
Darrell S. Barbara
Chief, Western Evaluation Section
Regulatory Branch

Enclosure



Legend

- Segment 13139 (6")
- Fairways
- Districts



6" Line Abandonment Project

Project Location

PMI
 ENVIRONMENTAL SERVICES
 Drawn By:
 Ryan Rivault
 985-714-1875
© SUPERIOR ENERGY SERVICES COMPANY

FIGURE 001 of 008 VICINITY MAP
 SEGMENT 13139 ABDN IN PLACE
 LAKE CHARLES DISTRICT
 PRODUCTION MANAGEMENT INDUSTRIES, LLC, HARVEY, LOUISIANA
 CHEVRON ENVIRONMENTAL MANAGEMENT COMPANY, COVINGTON, LOUISIANA

Legend

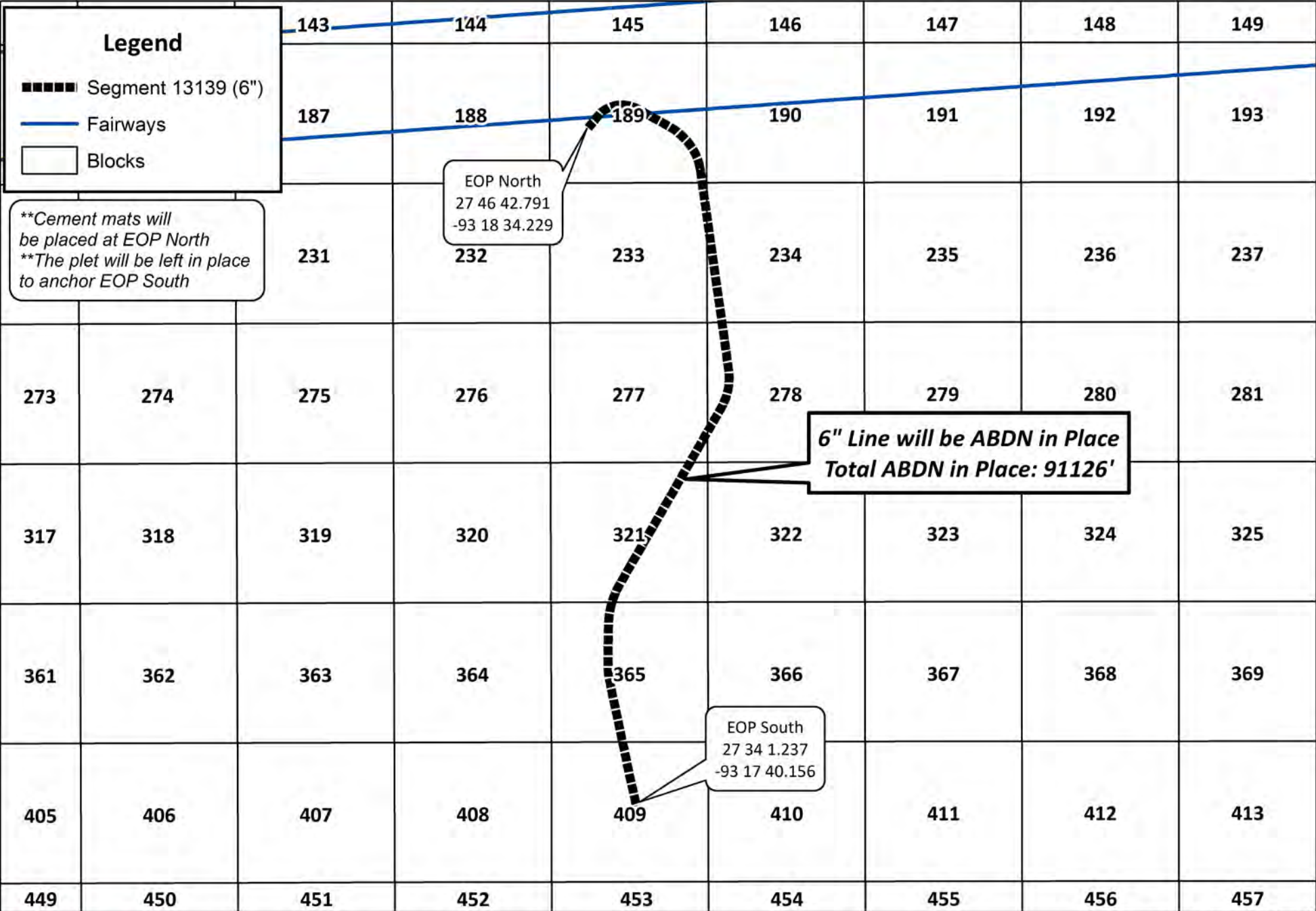
- █ Segment 13139 (6")
- Fairways
- Blocks

***Cement mats will be placed at EOP North
**The plot will be left in place to anchor EOP South*

EOP North
27 46 42.791
-93 18 34.229

**6" Line will be ABDN in Place
Total ABDN in Place: 91126'**

EOP South
27 34 1.237
-93 17 40.156



Drawn By:
Ryan Rivault
985-714-1875

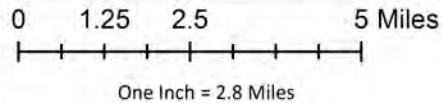


FIGURE 002 of 008 PLAN VIEW
SEGMENT 13139 ABDN IN PLACE
LAKE CHARLES DISTRICT

PRODUCTION MANAGEMENT INDUSTRIES, LLC, HARVEY, LOUISIANA
CHEVRON ENVIRONMENTAL MANAGEMENT COMPANY, COVINGTON, LOUISIANA

Legend

- Segment 13139 (6")
- Fairways
- Blocks

145

146

188

189

190

4,325' 6" Flowline

Fairway Entrance
27 46 56.229
-93 18 18.724

Fairway Exit
27 46 59.393
-93 17 34.780



Drawn By:
Ryan Rivault
985-714-1875

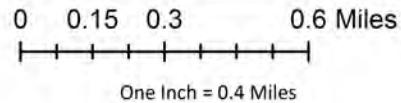


FIGURE 003 of 008 PLAN VIEW
SEGMENT 13139 ABDN IN PLACE
LAKE CHARLES DISTRICT

PRODUCTION MANAGEMENT INDUSTRIES, LLC, HARVEY, LOUISIANA
CHEVRON ENVIRONMENTAL MANAGEMENT COMPANY, COVINGTON, LOUISIANA

Flowline Plan View

PLET = Pipeline End Termination
Total Weight = 27,000 lbs

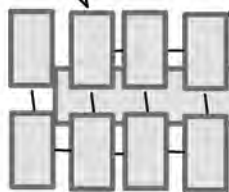
EOP North
Water Depth: 750'
27 46 42.791
-93 18 34.229

20'L x 8'W
Concrete Mats

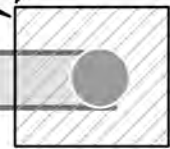
Overall Length
91126'

24'L x 17'W x10'H
Pipeline Plet

EOP South
Water Depth: 1350'
27 34 1.237
-93 17 40.156



6" Flowline



Flowline Cross Section View

Waterline

PLET = Pipeline End Termination
Total Weight = 27,000 lbs

EOP North
Water Depth: 750'
27 46 42.791
-93 18 34.229

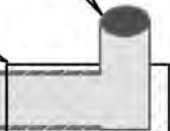
20'L x 8'W
Concrete Mats

Overall Length
91126'

EOP South
Water Depth: 1350'
27 34 1.237
-93 17 40.156

24'L x 17'W x10'H
Pipeline Plet

Mudline



Drawn By:
Ryan Rivault
985-714-1875

Scale: NTS

FIGURE 004 of 008 ABDN X-SECTION
SEGMENT 13139 ABDN IN PLACE
LAKE CHARLES DISTRICT
PRODUCTION MANAGEMENT INDUSTRIES, LLC, HARVEY, LOUISIANA
CHEVRON ENVIRONMENTAL MANAGEMENT COMPANY, COVINGTON, LOUISIANA

Flowline (Block 189) Cross Section View

Waterline

Length
1300'

6" Flowline

EOP North
Water Depth: 750'
27 46 42.791
-93 18 34.229

8' x 20'
Concrete Mats

Fairway Entrance
Water Depth: 750'
27 46 56.229
-93 18 18.724

Mudline

Flowline (Block 189) Cross Section View

Waterline

Length
4325'

6" Flowline

Fairway Entrance
Water Depth: 750'
27 46 56.229
-93 18 18.724

Fairway Exit
Water Depth: 750'
27 46 59.393
-93 17 34.780

Mudline

Flowline (Block 189) Cross Section View

Waterline

Fairway Exit
Water Depth: 750'
27 46 59.393
-93 17 34.780

Length
1021'

Block 189 Exit
Water Depth: 800'
27 45 40.129
-93 16 25.072

6" Flowline

Mudline

Flowline (Block 233/ 234) Cross Section View

Waterline

Block 233 Entrance
Water Depth: 800'
27 45 40.129
-93 16 25.072

Length
16000'

Block 234 Exit
Water Depth: 900'
27 43 4.07
-93 16 4.064

6" Flowline

Mudline

Flowline (Block 277 / 278) Cross Section View

Waterline

Block 278 Entrance
Water Depth: 900'
27 43 4.07
-93 16 4.064

Length
17000'

Block 277 Exit
Water Depth: 1000'
27 40 26.986
-93 16 41.023

6" Flowline

Mudline

Flowline (Block 321) Cross Section View

Waterline

Block 321 Entrance
Water Depth: 1000'
27 40 26.986
-93 16 41.023

Length
18000'

Block 321 Exit
Water Depth: 1150'
27 37 49.092
-93 18 7.529

6" Flowline

Mudline

Flowline (Block 365) Cross Section View

Waterline

Block 365 Entrance
Water Depth: 1150'
27 37 49.092
-93 18 7.529

Length
16000'

Block 365 Exit
Water Depth: 1275'
27 35 12.431
-93 17 55.708

6" Flowline

Mudline

Flowline (Block 409) Cross Section View

PLET = Pipeline End Termination
Total Weight = 27,000 lbs

Waterline

Block 409 Entrance
Water Depth: 1275'
27 35 12.431
-93 17 55.708

Length
7500'

EOP South
Water Depth: 1350'
27 34 1.237
-93 17 40.156

24'L x 17'W x 10'H
Pipeline Plet

6" Flowline

Mudline