

# JOINT PUBLIC NOTICE

November 7, 2016

United States Army  
Corps of Engineers  
New Orleans District  
Attn: Regulatory Branch  
7400 Leake Avenue  
New Orleans, Louisiana 70118

State of Louisiana  
Department of Environmental Quality  
Attn: Water Quality Certification Sec.  
Post Office Box 4313  
Baton Rouge, Louisiana 70821-4313

Project Manager: James W. Little, Jr.  
(225) 342-3099 / fax: (225) 342-9439  
James.little@usace.army.mil  
Permit Application Number:  
MVN-2013-02362-WII

Project Manager:  
Elizabeth Hill  
(225) 219-3225 / fax: (225) 219-3156  
WQC Application Number:  
WQC 160325-01

Interested parties are hereby notified that a permit application has been received by the New Orleans District of the U.S. Army Corps of Engineers pursuant to: [ **X** ] Section 10 of the Rivers and Harbors Act of March 3, 1899 (30 Stat. 1151; 33 USC 403); and/or [ **X** ] Section 404 of the Clean Water Act (86 Stat. 816; 33 USC 1344).

The application has also been mailed to the Louisiana Department of Environmental Quality, for a Water Quality Certification (WQC) in accordance with statutory authority contained in Louisiana Revised Statute 30:2074 A(3), and provisions of Section 401 of the Clean Water Act (P.L. 95-17).

## **ACCESS ROAD, WELLPAD AND APPURTENT STRUCTURES TO DRILL A BRINE WELL IN ASSUMPTION PARISH**

**NAME OF APPLICANT:** The Dow Chemical Company, Grand Bayou Operations, c/o URS Corporation, Attn: Mr. Jim Leblanc, 1515 Poydras Street, New Orleans, Louisiana 70112.

**LOCATION OF WORK:** In Assumption Parish, North 30.005278, West -91.1175, located south of Louisiana Highway 70, near Grand bayou, Louisiana, as shown on the attached vicinity map.

**CHARACTER OF WORK:** Clear, grade, fill and/or excavate and construct a 66 feet wide by 427 feet long access road and a 332 feet by 382 feet drill pad. Widen existing roadways by 32 feet and install pipe racks, supports and footings, all to support drilling a brine well. Approximately 41,540 cubic yards of hauled-in earthen fill material and 3,636 cubic yards of crushed stone will be used for the access road and drill pad. Approximately 4 .33 acres of jurisdictional wetlands would be impacted by project implementation. The applicant proposes to purchase compensatory mitigation acres at CEMVN approved mitigation banks in the area.

The comment period for the Department of the Army Permit and the Louisiana Department of Environmental Quality WQC will close **20 days** from the date of this joint public notice. Written comments, including suggestions for modifications or objections to the proposed work, stating reasons thereof, are being solicited from anyone having interest in this permit and/or this WQC request and must be submitted so as to be received before or by the last day of the comment period. Letters concerning the Corps of Engineers permit application must reference the applicant's name and the Permit Application Number, and be forwarded to

the Corps of Engineers at the address above, **ATTENTION: REGULATORY BRANCH.** Individuals or parties may request an extension of time in which to comment on the proposed work by writing, faxing, or e-mailing the Corps of Engineers Project Manager listed above. Any request must be specific and substantively supportive of the requested extension, and received by this office prior to the end of the initial comment period. The Section Chief will review the request and the requestor will be promptly notified of the decision to grant or deny the request. If granted, the time extension will be continuous to the initial comment period and, inclusive of the initial comment period, will not exceed a total of 30 calendar days. Letters concerning the Water Quality Certification must reference the applicant's name and the WQC Application number and be mailed to the Louisiana Department of Environmental Quality at the address above.

The application for this proposed project is on file with the Louisiana Department of Environmental Quality and may be examined during weekdays between 8:00 a.m. and 4:30 p.m. Copies may be obtained upon payment of costs of reproduction.

### **Corps of Engineers Permit Criteria**

The decision whether to issue a permit will be based on an evaluation of the probable impacts, including cumulative impacts of the proposed activity on the public interest. That decision will reflect the national concern for both protection and utilization of important resources. The benefit which reasonably may be expected to accrue from the proposal must be balanced against its reasonably foreseeable detriments. All factors which may be relevant to the proposal will be considered including the cumulative effects thereof; among those are conservation, economics, aesthetics, general environmental concerns, wetlands, historic properties, fish and wildlife values, flood hazards, floodplain values, land use, navigation, shoreline erosion and accretion, recreation, water supply and conservation, water quality, energy needs, safety, food and fiber production, mineral needs, considerations of property ownership and, in general, the needs and welfare of the people.

The U.S. Army Corps of Engineers is soliciting comments from the public, federal, state, and local agencies and officials, Indian Tribes, and other interested parties in order to consider and evaluate the impacts of this proposed activity. Any comments received will be considered by the U.S. Army Corps of Engineers to determine whether to make, modify, condition, or deny a permit for this proposal. To make this decision, comments are used to assess impacts on endangered species, historic properties, water quality, general environmental effects, and other public interest factors listed above. Comments are used in the preparation of an Environmental Assessment and/or an Environmental Impact Statement pursuant to the National Environmental Policy Act. Comments are also used to determine the need for a public hearing and to determine the overall public interest of the proposed activity.

The New Orleans District is unaware of properties listed on the National Register of Historic Places near the proposed work. The possibility exists that the proposed work may damage or destroy presently unknown archeological, scientific, pre-historical, historical sites, or data. Issuance of this public notice solicits input from the State Archeologist and State Historic Preservation Officer regarding potential impacts to cultural resources.

Based on the South Louisiana **Standard Local Operating Procedure for Endangered Species (SLOPES)**, as signed on October 22, 2014, between the U.S. Army Corps of Engineers, New Orleans District and the U.S. Fish and Wildlife Service, the proposed project was evaluated under the determination key on 25 March 2016 and it has been determined that the 4.33 acres of wetlands to be filled would result in a "No Effect" for any of the species within the list.

This notice initiates the Essential Fish Habitat (EFH) consultation requirements of the Magnuson-Stevens Fishery Conservation and Management Act. The applicant's proposal may result in the destruction or alteration of n/a acres of EFH utilized by various life stages of red drum and penaeid shrimp. Our initial determination is that the proposed action would not have a substantial adverse impact on EFH or federally managed fisheries in the Gulf of Mexico. Our final determination relative to project impacts and the need for mitigation measures is subject to review by and coordination with the National Marine Fisheries Service.

If the proposed work involves deposits of dredged or fill material into navigable waters, the evaluation of the probable impacts will include the application of guidelines established by the Administrator of the Environmental Protection Agency. Also, a certification that the proposed activity will not violate applicable water quality standards will be required from the Department of Environmental Quality, before a permit is issued.

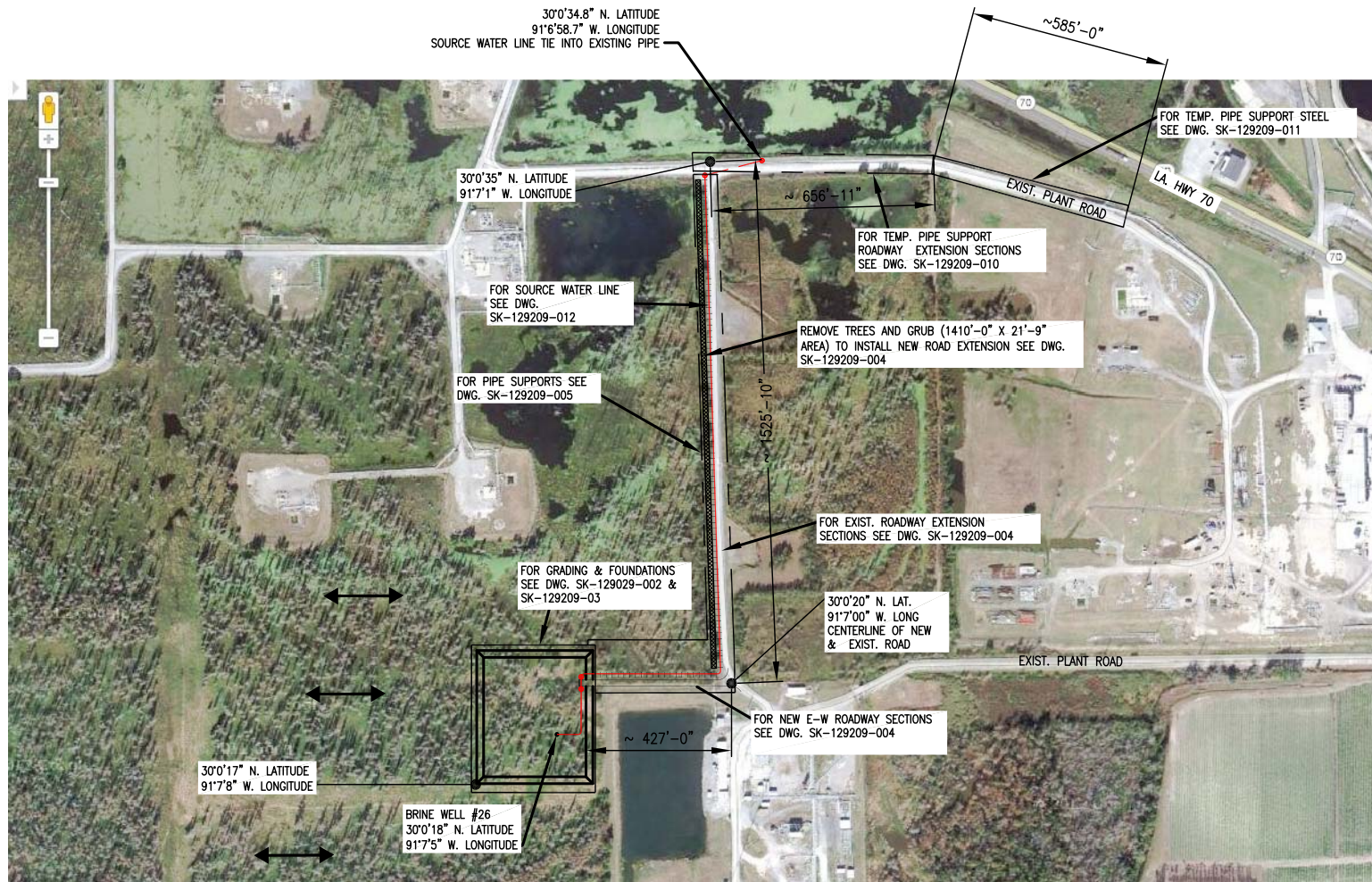
Any person may request, in writing, within the comment period specified in this notice, that a public hearing be held to consider this application. Requests for public hearings shall state, with particularity, the reasons for holding a public hearing.

The applicant has certified that the proposed activity described in the application complies with and will be conducted in a manner that is consistent with the Louisiana Coastal Resources Program. The Department of the Army permit will not be issued unless the applicant received approval or a waiver of the Coastal Use Permit by the Department of Natural Resources.

You are requested to communicate the information contained in this notice to any other parties whom you deem likely to have interest in the matter.

John M. Herman  
Chief, Central Evaluation Section  
Regulatory Branch

Enclosure



←→ WATER FLOW

## PLOT PLAN

0 500  
Scale in feet

### NOTES:

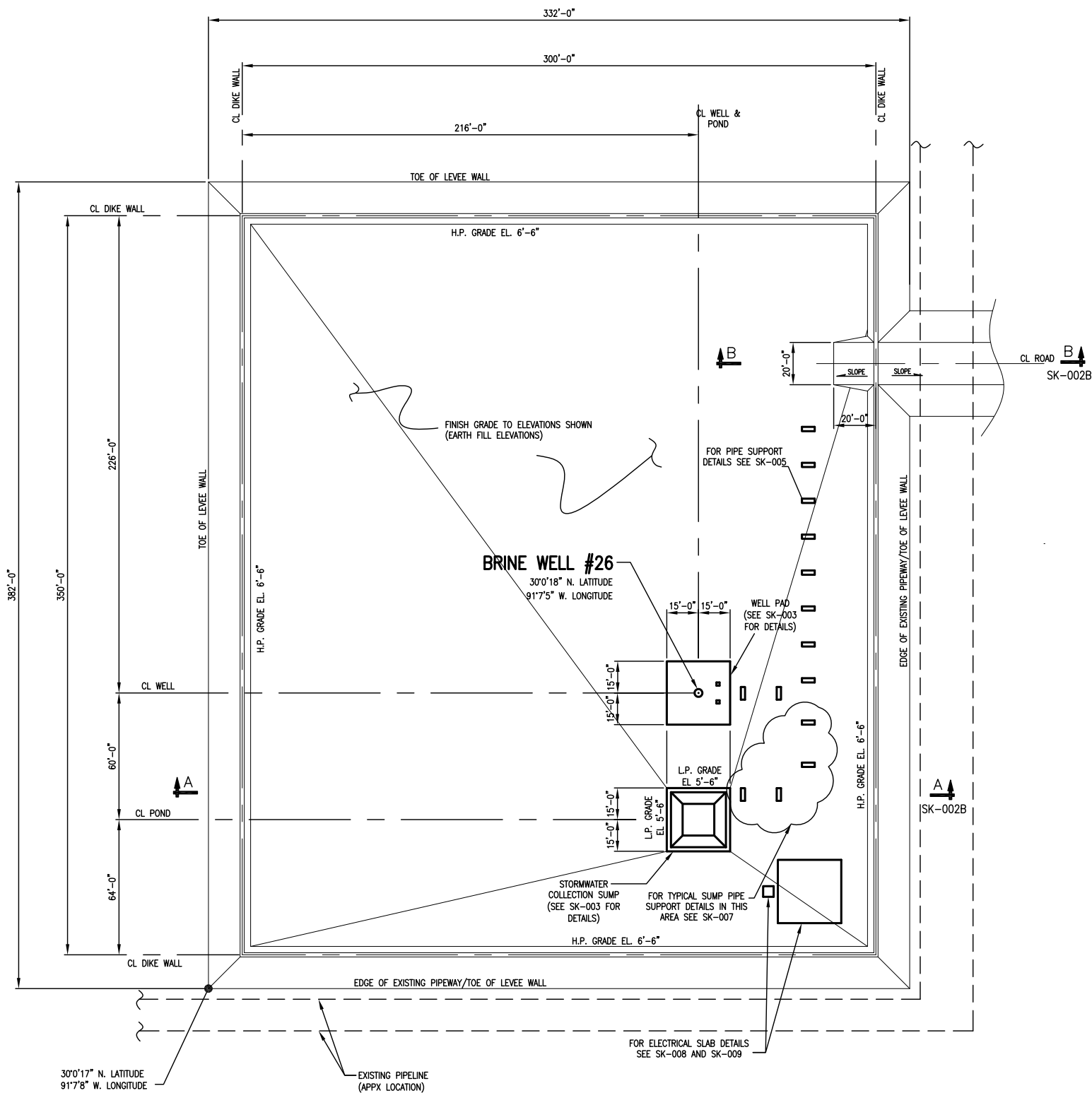
1. ALL EQUIPMENT & STAGING WORK WILL BE CONTAINED WITHIN THE EXISTING AND PROPOSED ROADS AND LEVEE FOOTPRINT.



**Ford, Bacon & Davis**  
A Limited Liability Company

PROJECT NO. F-4584

THE DOW CHEMICAL COMPANY			
LOUISIANA DIVISION		NAPOLEONVILLE, LOUISIANA	
GRAND BAYOU OPERATIONS BRINE WELL 26 PROJECT - 12.19 ESTIMATE SITE PLAN			
CHARGE NUMBER 129209	SCALE NTS	SK-129209-001	REV. 0



# **GRADING & FOUNDATION LOCATION PLAN**

SK-001

0 30

Scale in feet



**Ford, Bacon & Davis**

A Limited Liability Company

PROJECT NO. F-4584

## **THE DOW CHEMICAL COMPANY**

LOUISIANA DIVISION

NAPOLEONVILLE, LOUISIANA

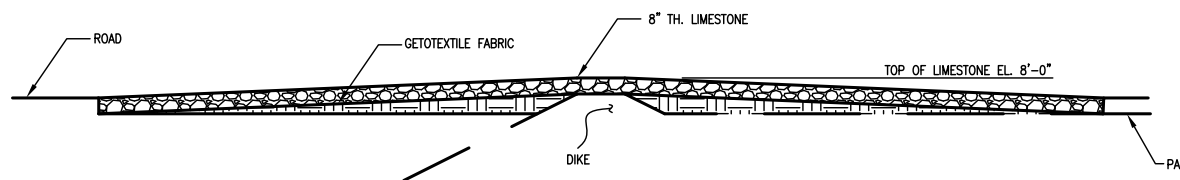
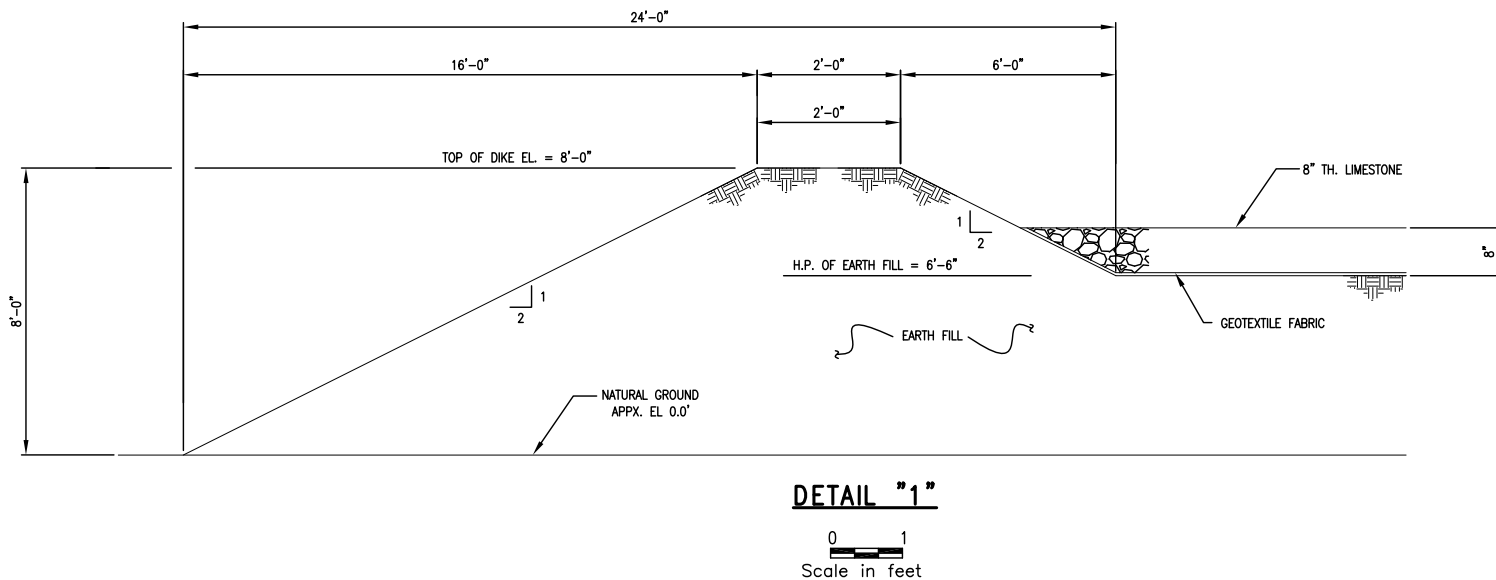
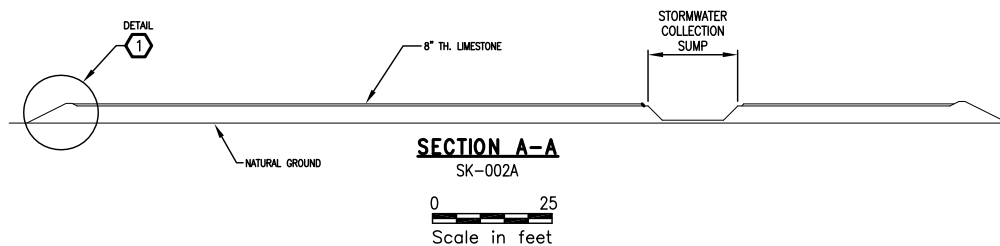
GRAND BAYOU OPERATIONS  
BRINE WELL 26 PROJECT - 12.19 ESTIMATE  
SITE PLAN

CHARGE NUMBER  
129209

SCALE  
NTS

SK-129209-002 A

REV.  
0



## MATERIAL TAKE-OFF FOR WELL PAD

TOTAL REQUIRED CLAY FILL	28,950 CUYD
TOTAL REQUIRED LIMESTONE	2,475 CUYD

- NOTES:
1. APPX. 4' FROM TOP OF WATER/MUCK TO HARD GROUND
  2. NO DREDGING REQUIRED

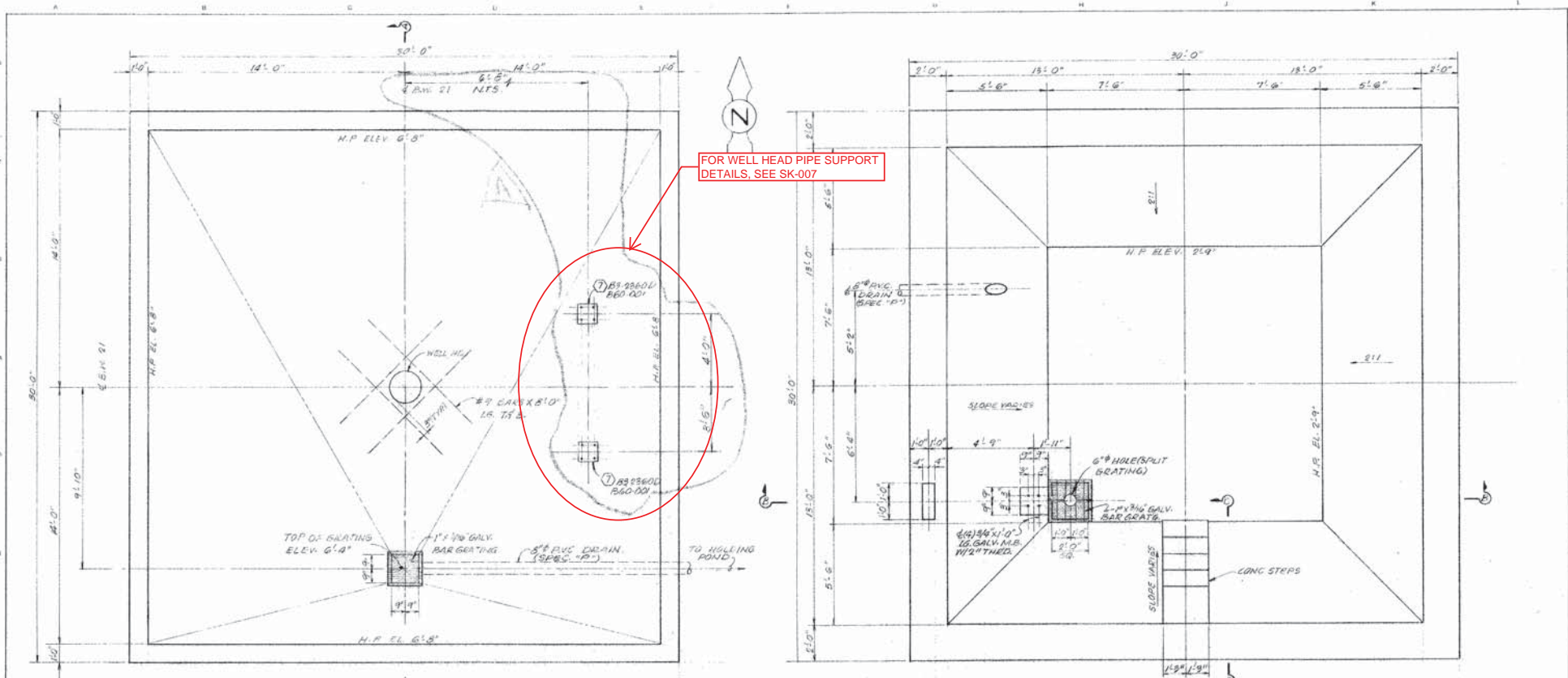


**Ford, Bacon & Davis**  
A Limited Liability Company

PROJECT NO. F-4584

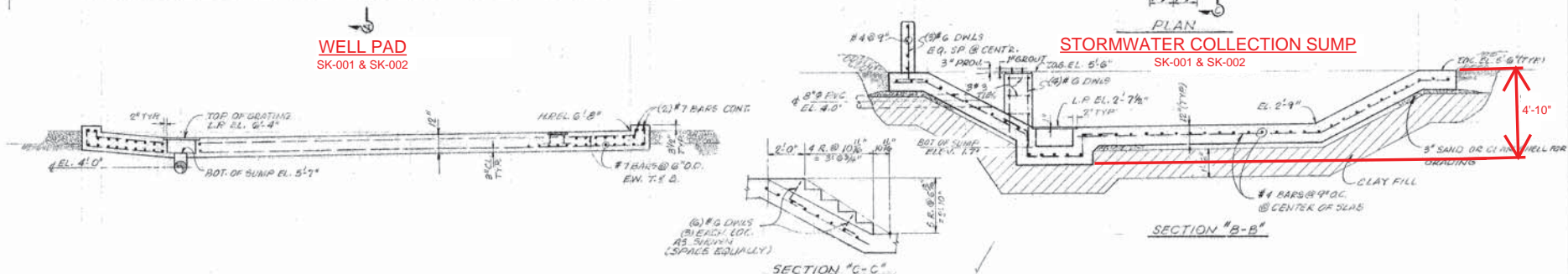
THE DOW CHEMICAL COMPANY			
LOUISIANA DIVISION		NAPOLEONVILLE, LOUISIANA	
GRAND BAYOU OPERATIONS			
BRINE WELL 26 PROJECT - 12.19 ESTIMATE			
SITE PLAN			
CHARGE NUMBER	SCALE	SK-129209-002 B	REV.
129209	NTS		0



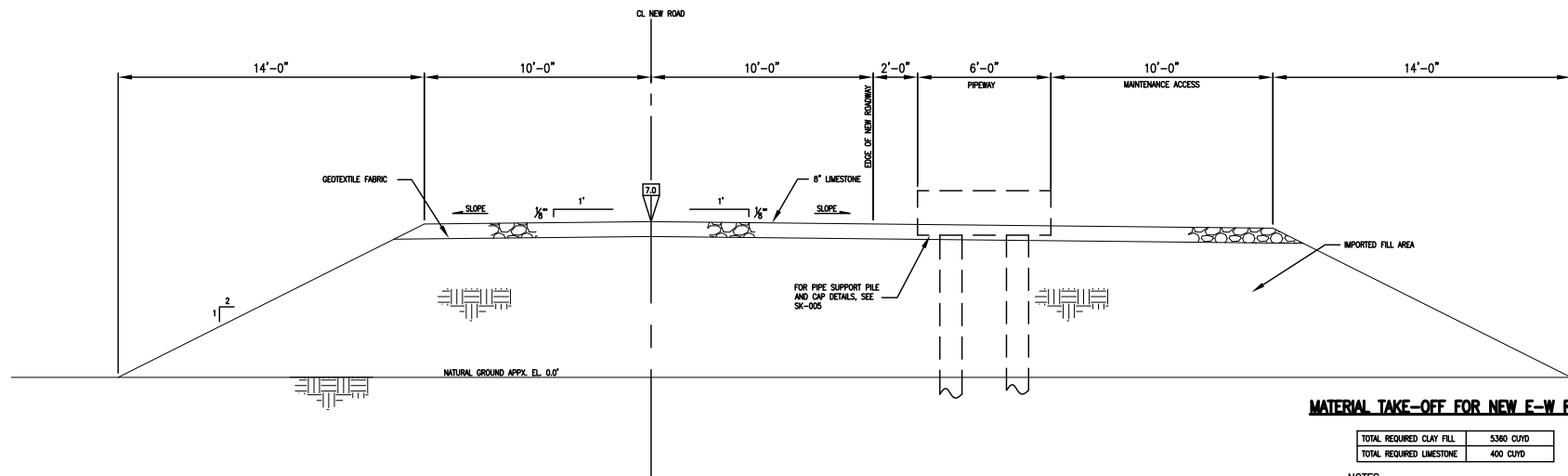


**WELL PAD**  
SK-001 & SK-002

**STORMWATER COLLECTION SUMP**  
SK-001 & SK-002



REVISIONS				DRAWING ISSUE RECORD				DRAWING ISSUE RECORD				DESIGNED				CHECKED				PLANT NUMBER			
												C. TUGHER				2/9/89							



**NEW E-W ROAD TYPICAL ROAD CROSS SECTION**

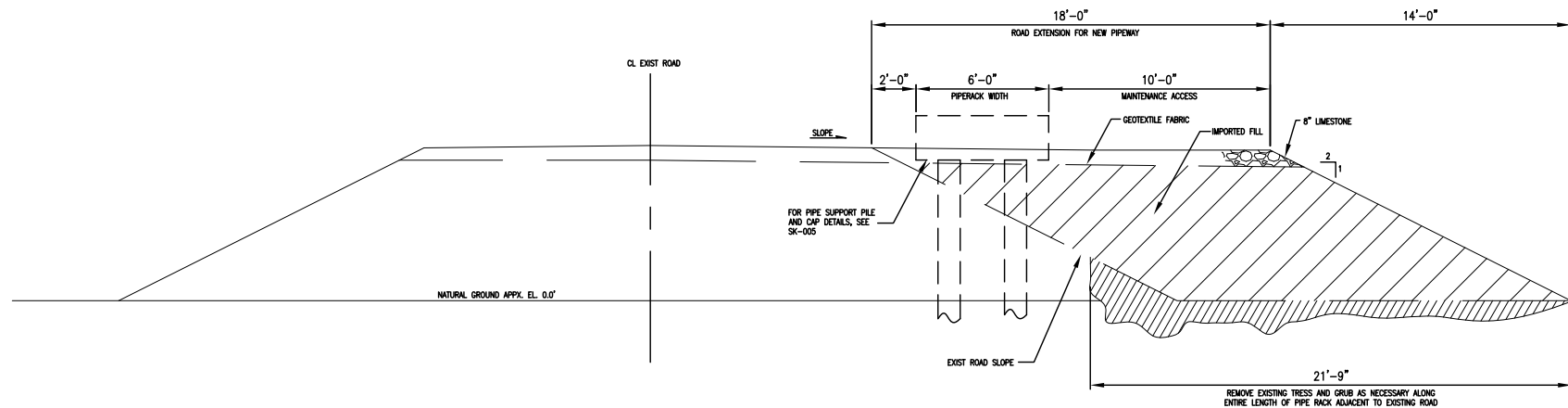
(427 LF REQ'D)  
SK-001

**MATERIAL TAKE-OFF FOR NEW E-W ROAD**

TOTAL REQUIRED CLAY FILL	5360 CUYD
TOTAL REQUIRED LIMESTONE	400 CUYD

**NOTES:**

1. APPX. 4' FROM TOP OF WATER/MUCK TO HARD GROUND
2. NO DREDGING REQUIRED



**EXISTING ROAD EXTENSION TYPICAL CROSS SECTION**

(1526 LF REQ'D)  
SK-001

**MATERIAL TAKE-OFF FOR EXISTING ROAD EXTENSION**

TOTAL REQUIRED CLAY FILL	6450 CUYD
TOTAL REQUIRED LIMESTONE	680 CUYD

**NOTES:**

1. APPX. 4' FROM TOP OF WATER/MUCK TO HARD GROUND
2. NO DREDGING REQUIRED

0 10  
Scale in feet



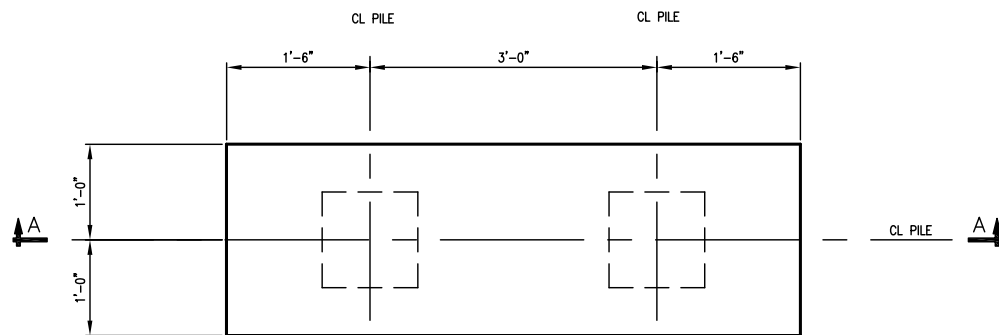
**Ford, Bacon & Davis**

A Limited Liability Company

PROJECT NO. F-4584

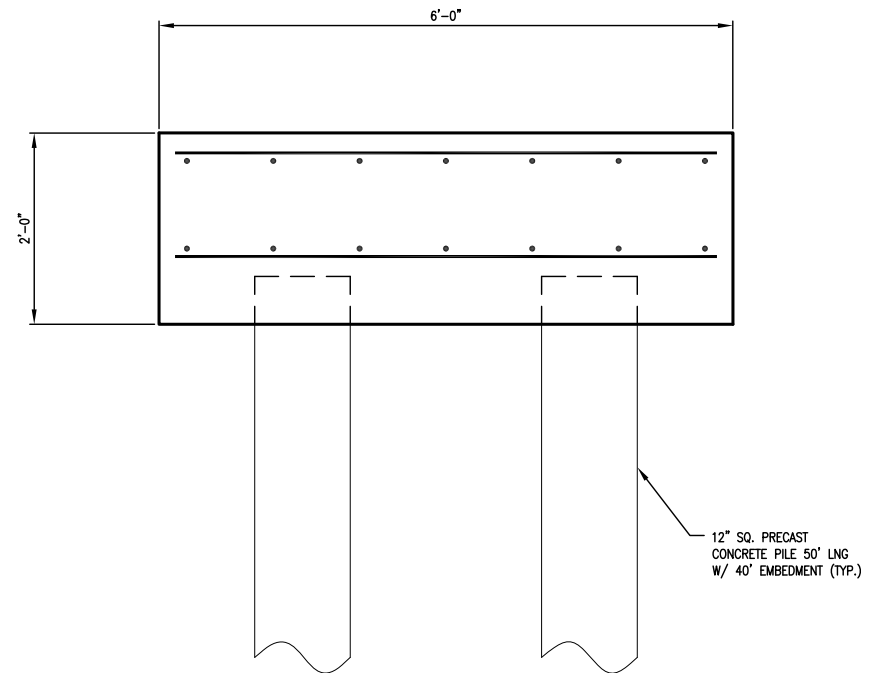
THE DOW CHEMICAL COMPANY			
LOUISIANA DIVISION		NAPOLEONVILLE, LOUISIANA	
GRAND BAYOU OPERATIONS			
BRINE WELL 26 PROJECT - 12.19 ESTIMATE			
TYPICAL ROAD CROSS SECTIONS			
CHARGE NUMBER	SCALE	SK-129209-004	REV.
129209	NTS		0



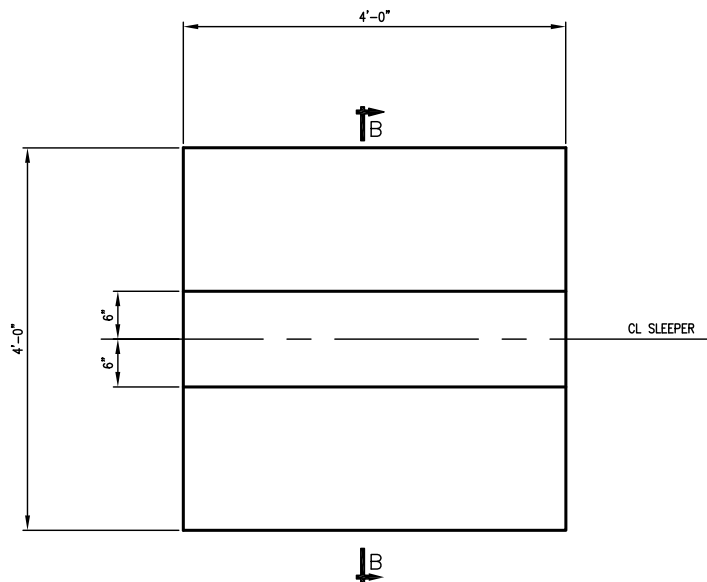


### TYPICAL PIPE SUPPORT ALONG ROAD

(105 REQ'D)  
SK-001

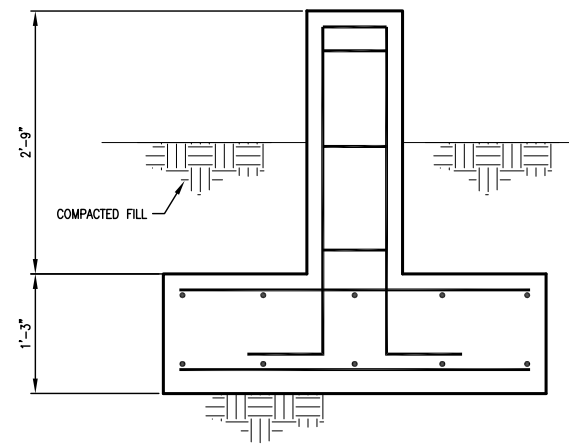


### SECTION A-A



### TYPICAL PIPE SUPPORT ON PAD

(10 REQ'D)  
SK-002



### SECTION B-B



Scale in feet



**Ford, Bacon & Davis**

A Limited Liability Company

PROJECT NO. F-4584

THE DOW CHEMICAL COMPANY			
LOUISIANA DIVISION		NAPOLEONVILLE, LOUISIANA	
GRAND BAYOU OPERATIONS			
BRINE WELL 26 PROJECT - 12.19 ESTIMATE			
PIPE SUPPORT DETAILS			
CHARGE NUMBER	SCALE	SK-129209-005	REV.
129209	NTS		0

DRAWING DELETED

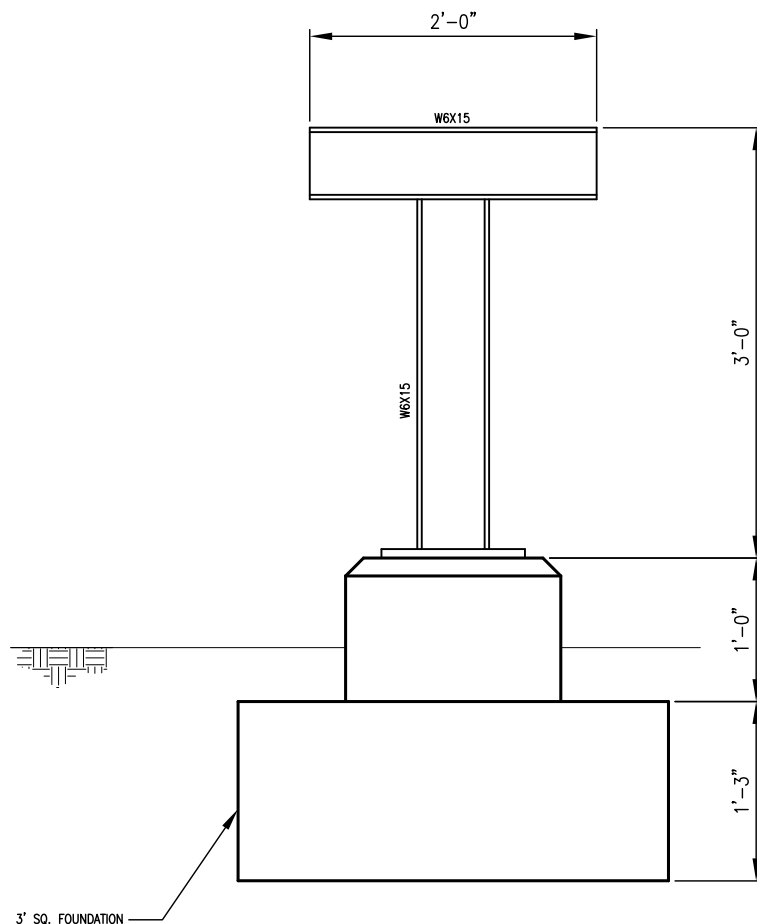


Ford, Bacon & Davis

A Limited Liability Company

PROJECT NO. F-4584

THE DOW CHEMICAL COMPANY			
LOUISIANA DIVISION		NAPOLÉONVILLE, LOUISIANA	
GRAND BAYOU OPERATIONS BRINE WELL 26 PROJECT – 12.19 ESTIMATE NEW N-S ROAD CROSS SECTION			
CHARGE NUMBER 129209	SCALE NTS	SK-129209-006	REV. 0

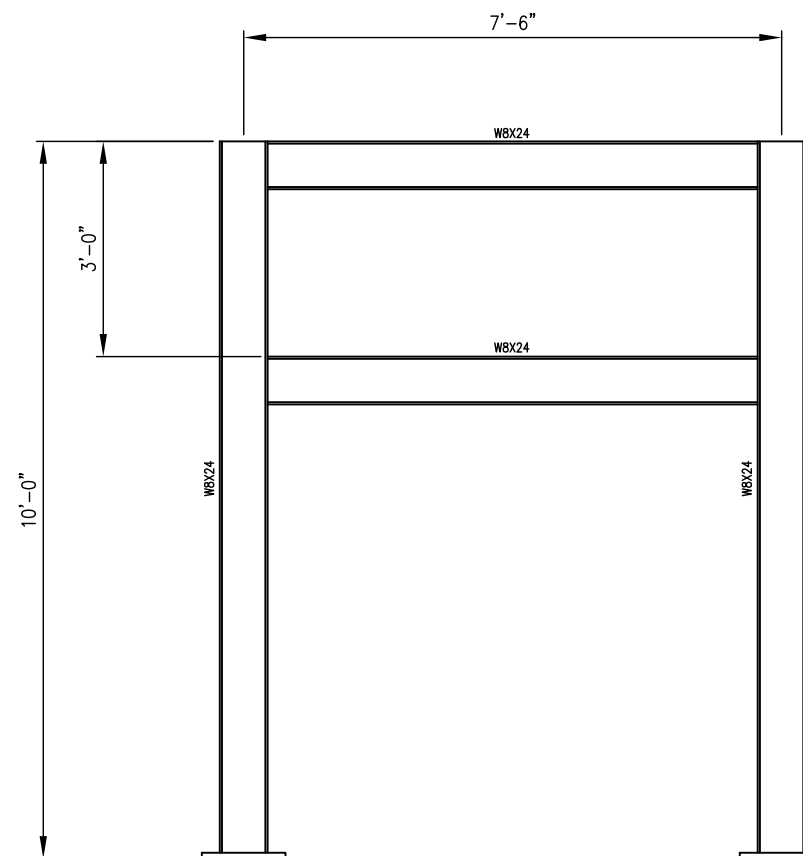


**TYPICAL SUMP PIPE SUPPORT**

(4 REQ'D)  
SK-002



Scale in feet



**WELL HEAD PIPE SUPPORT**

(1 REQ'D)  
SK-003



Scale in feet

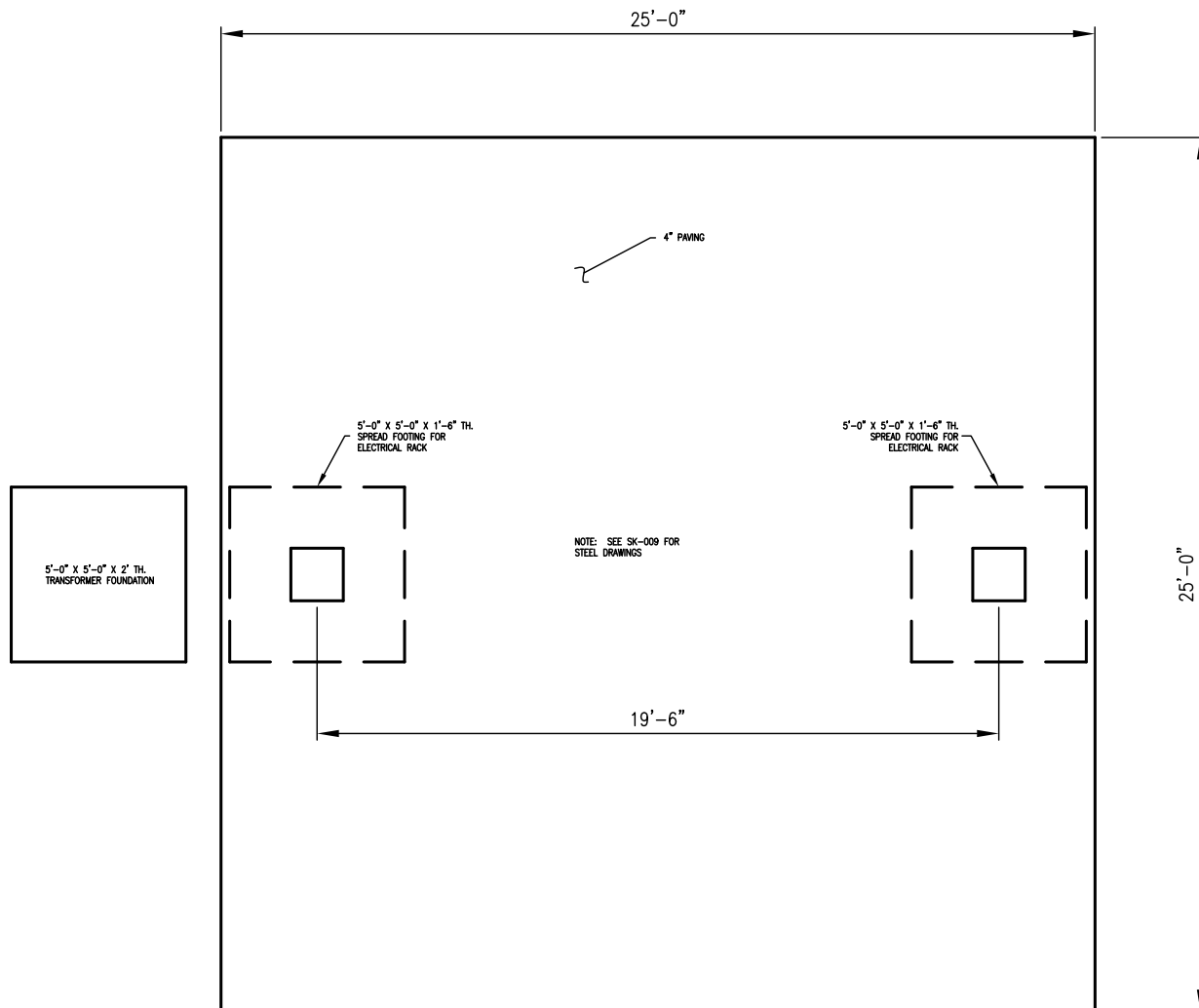


**Ford, Bacon & Davis**

A Limited Liability Company

PROJECT NO. F-4584

THE DOW CHEMICAL COMPANY			
LOUISIANA DIVISION		NAPOLEONVILLE, LOUISIANA	
GRAND BAYOU OPERATIONS			
BRINE WELL 26 PROJECT - 12.19 ESTIMATE			
STEEL PIPE SUPPORTS			
CHARGE NUMBER	SCALE	SK-129209-007	REV.
129209	NTS		0



**Ford, Bacon & Davis**

*A Limited Liability Company*

PROJECT NO. F-4584

THE DOW CHEMICAL COMPANY			
LOUISIANA DIVISION		NAPOLEONVILLE, LOUISIANA	
GRAND BAYOU OPERATIONS			
BRINE WELL 26 PROJECT – 12.19 ESTIMATE			
ELECTRICAL RACK FOUNDATIONS			
CHARGE NUMBER	SCALE	SK-129209-008	REV.
129209	NTS		0

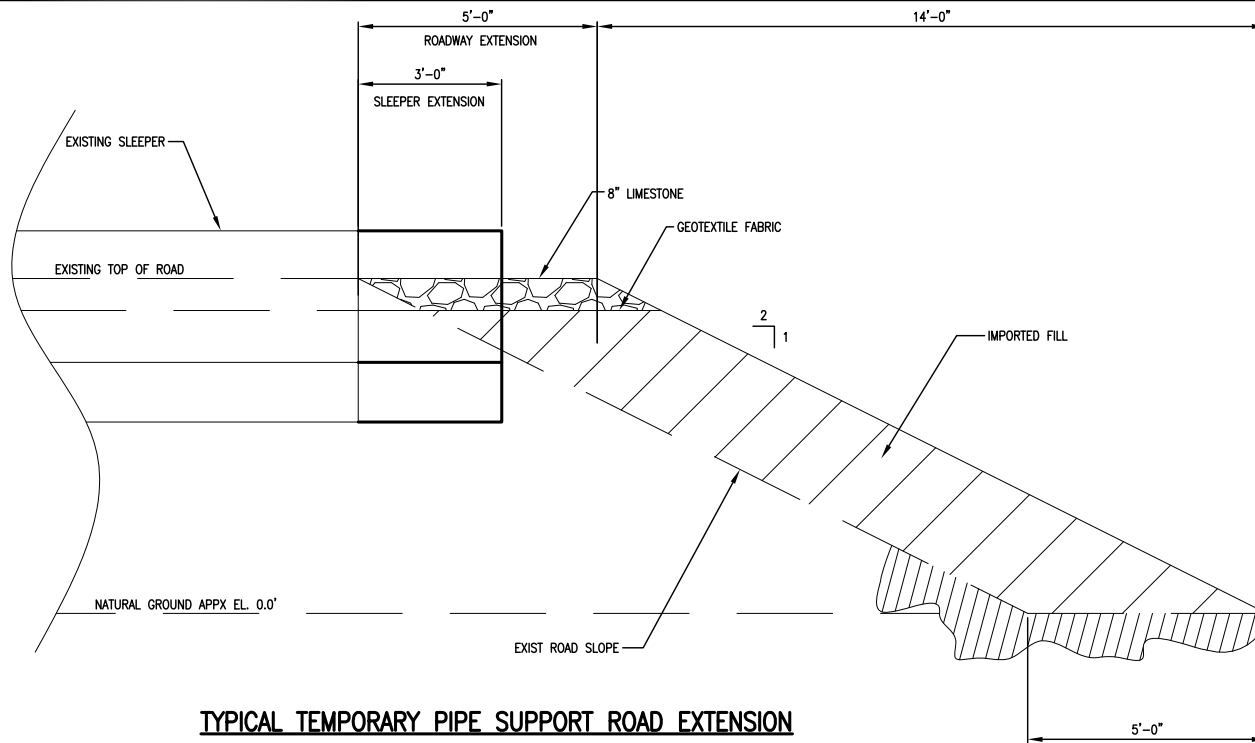


TRANSFORMER SLAB  
SEE SK-008 FOR  
DETAILS

ELEVATION

SK-002 & SK-008

[illegible]

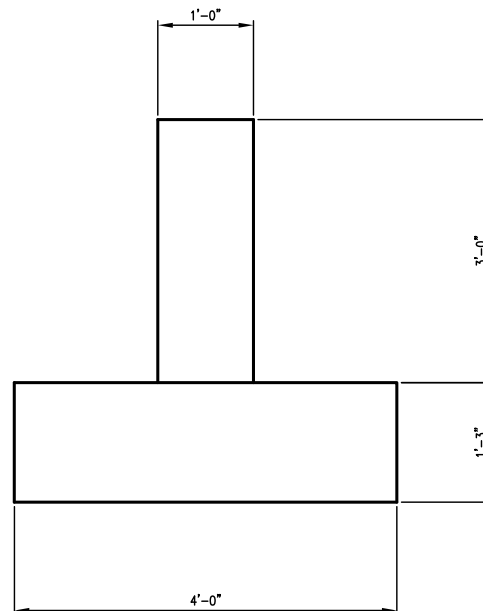


### TYPICAL TEMPORARY PIPE SUPPORT ROAD EXTENSION

(LOOKING WEST)  
 (657 LF OF ROAD EXTENSION REQ'D)  
 (25 SLEEPER EXTENSIONS REQ'D)  
 SK-001

0 5

Scale in feet



### TYPICAL SLEEPER CROSS SECTION

0 3

Scale in feet

### MATERIAL TAKE-OFF FOR TEMPORARY PIPE ROAD EXTENSION

TOTAL REQUIRED FILL	780 CU YD
TOTAL REQUIRED LIMESTONE	81 CU YD

#### NOTES:

1. APPX. 4' FROM TOP OF WATER/MUCK TO HARD GROUND
2. NO DREDGING REQUIRED



**Ford, Bacon & Davis**

*A Limited Liability Company*

PROJECT NO. F-4584

### THE DOW CHEMICAL COMPANY

LOUISIANA DIVISION

NAPOLÉONVILLE, LOUISIANA

GRAND BAYOU OPERATIONS  
 BRINE WELL 26 PROJECT - 12.19 ESTIMATE  
 TEMPORARY PIPE SUPPORT ROAD EXTENSION

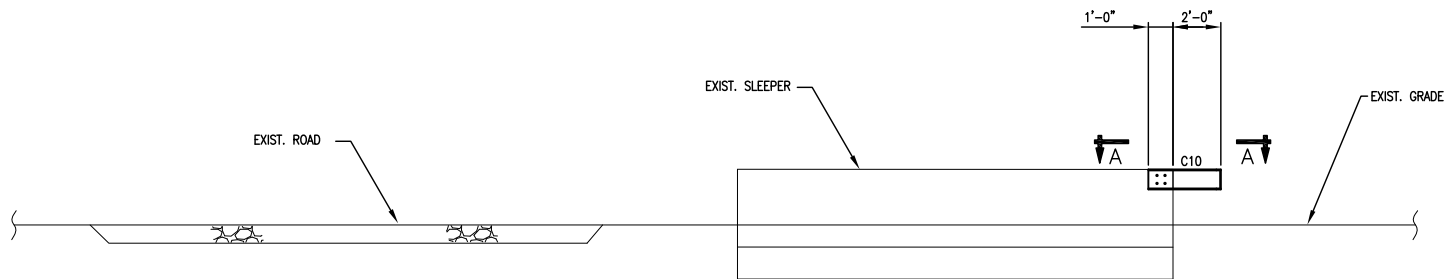
CHARGE NUMBER  
129209

SCALE  
NTS

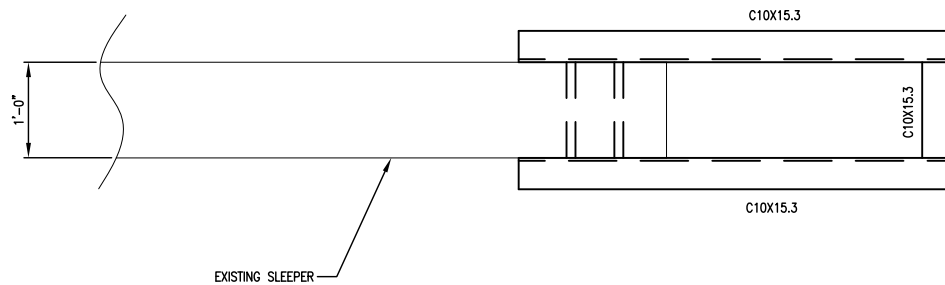
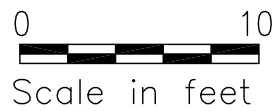
SK-129209-010

REV.  
0

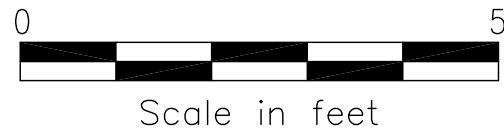




**ELEVATION**  
**PIPE SUPPORT STEEL**  
 (LOOKING WEST)  
 (32 REQ'D)



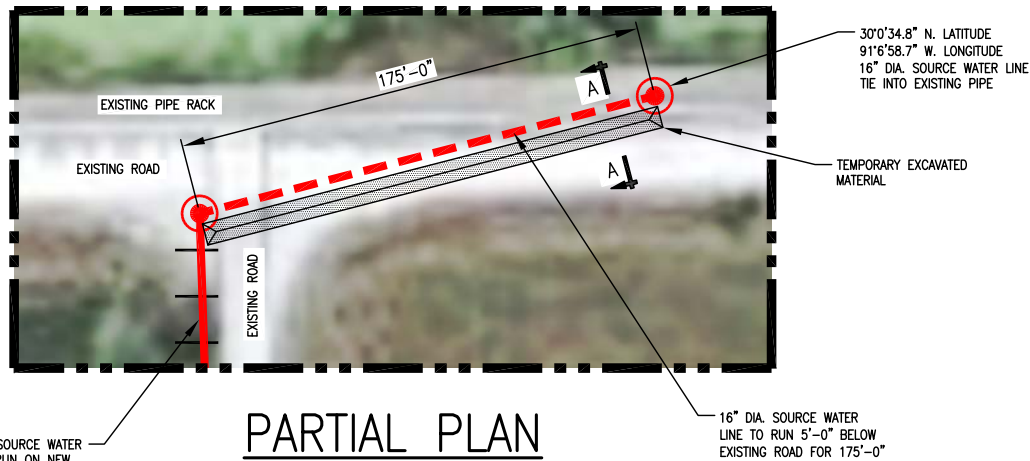
**SECTION A-A**



**Ford, Bacon & Davis**  
 A Limited Liability Company

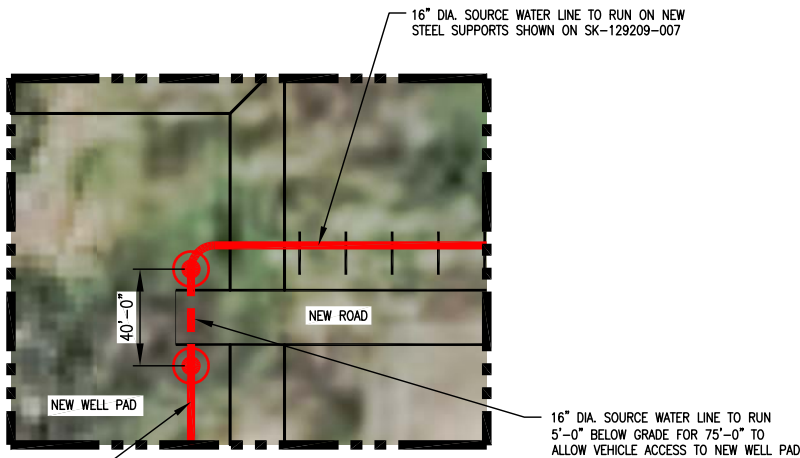
PROJECT NO. F-4584

THE DOW CHEMICAL COMPANY			
LOUISIANA DIVISION		NAPOLEONVILLE, LOUISIANA	
GRAND BAYOU OPERATIONS BRINE WELL 26 PROJECT - 12.19 ESTIMATE TEMPORARY PIPE SUPPORT STEEL			
CHARGE NUMBER 129209	SCALE NTS	SK-129209-011	REV. 0



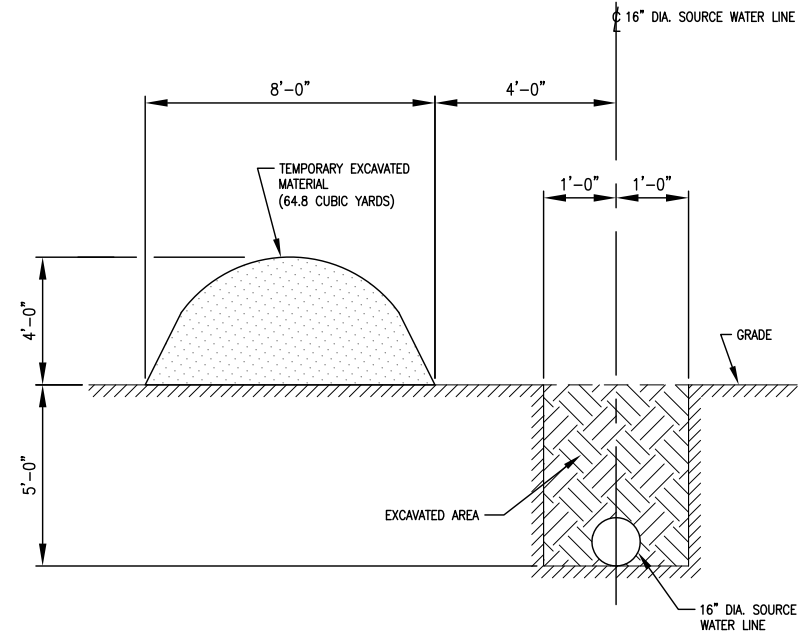
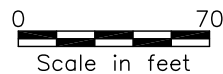
**PARTIAL PLAN**  
SEE DWG. SK-129209-001

16" DIA. SOURCE WATER LINE TO RUN ON NEW STEEL SUPPORTS SHOWN ON SK-129209-007



**PARTIAL PLAN**  
SEE DWG. SK-129209-001

16" DIA. SOURCE WATER LINE TO RUN ON CONCRETE SLEEPER SUPPORTS SHOWN ON SK-129209-005 TO NEW WELL; NO ADDITIONAL WORK SPACES ARE REQUIRED



**SECTION A-A**



**Ford, Bacon & Davis**  
A Limited Liability Company

PROJECT NO. F-4584

THE DOW CHEMICAL COMPANY			
LOUISIANA DIVISION		NAPOLEONVILLE, LOUISIANA	
GRAND BAYOU OPERATIONS			
BRINE WELL 26 PROJECT - 12.19 ESTIMATE			
16" DIA. SOURCE WATER LINE			
CHARGE NUMBER	SCALE	SK-129209-012	REV.
129209	NTS		0