

JOINT PUBLIC NOTICE

May 16, 2016

United States Army
Corps of Engineers
New Orleans District
Regulatory Branch
Post Office Box 60267
New Orleans, Louisiana 70160-0267

State of Louisiana
Department of Environmental Quality
Water Quality Certification Section
Post Office Box 4313
Baton Rouge, Louisiana 70821-4313

(504) 862-2675
Project Manager
Jamie Crowe
Jamie.M.Crowe@usace.army.mil
Permit Application Number
MVN 2005-0344 CO

(225) 219-3225
Project Manager
Elizabeth Hill
WQC Application Number
WQC 160418-02

Interested parties are hereby notified that a permit application has been received by the New Orleans District of the U.S. Army Corps of Engineers pursuant to: [X] Section 10 of the Rivers and Harbors Act of March 3, 1899 (30 Stat. 1151; 33 USC 403); and/or [X] Section 404 of the Clean Water Act (86 Stat. 816; 33 USC 1344).

Application has also been made to the Louisiana Department of Environmental Quality, Office of Environmental Services, for a Water Quality Certification (WQC) in accordance with statutory authority contained in LRS30:2047 A(3), and provisions of Section 401 of the Clean Water Act (P.L.95-17).

DREDGING AND EARTHEN PLUGS IN TERREBONNE PARISH

NAME OF APPLICANT: Harry Bourg Corporation, c/o Morris P. Hebert, Inc, 10343 Siegen Lane, Building 4-B, Baton Rouge, Louisiana 70810.

LOCATION OF WORK: Within the Terrebonne Basin, in the West-Central Louisiana Coastal hydrologic unit (HUC 08090302), in Section 36, T19S-R16E; Sections 1, 2, and 12, T20S-16E, and Sections 5, 8, and 7 T20S-R17E, approximately 8 miles south of Theriot, Louisiana, within Terrebonne Parish.

CHARACTER OF WORK: The applicant has requested a modification to their existing permit to include dredging of thirteen areas and deposition of fill to create fifteen earthen plugs to restore/protect property. Approximately 46,070 cubic yards of native material will be excavated and deposited in eroded areas. Dredging operations will impact approximately 6.72 acres of non-vegetated water bottoms, while the proposed fill will impact approximately 5.38 acres of non-vegetated water bottoms. No mitigation is anticipated due to the lack of impacts to vegetated wetlands.

The comment period for the Department of the Army Permit and the Louisiana Department of Environmental Quality WQC will close **20 days** from the date of this joint public notice. Written comments, including suggestions for modifications or objections to the proposed work, stating reasons thereof, are being solicited from anyone having interest in this permit and/or this WQC request and must be mailed, so as to be received before or by the last day of the comment period. Letters concerning the Corps of Engineers permit application must reference the applicant's name and the Permit Application Number, and be mailed to the Corps of Engineers at the address above, **ATTENTION: REGULATORY BRANCH**. The application for this proposed project is on file with the Louisiana Department of Environmental Quality and may be examined weekdays between 8:00 a.m. and 4:30 p.m. Copies may be obtained upon payment of costs of reproduction. Individuals or parties may request an extension of time in which to comment on the proposed work by writing or e-mailing the Corps of Engineers Project Manager listed above. Any request must be specific and substantively supportive of the requested extension, and received by this office prior to the end of the initial comment period. The Section Chief will review the request and the requestor will be promptly notified of the decision to grant or deny the request. If granted, the time extension will be continuous to the initial comment period and, inclusive of the initial comment period, will not exceed a total of 30 calendar days. Letters concerning the Water Quality Certification must reference the applicant's name and the WQC Application number and be mailed to the Louisiana Department of Environmental Quality at the address above.

Corps of Engineers Permit Criteria

The decision whether to issue a permit will be based on an evaluation of the probable impacts, including cumulative impacts of the proposed activity on the public interest. That decision will reflect the national concern for both protection and utilization of important resources. The benefit which reasonably may be expected to accrue from the proposal must be balanced against its reasonably foreseeable detriments. All factors which may be relevant to the proposal will be considered including the cumulative effects thereof; among those are conservation, economics, aesthetics, general environmental concerns, wetlands, historic properties, fish and wildlife values, flood hazards, floodplain values, land use, navigation, shoreline erosion and accretion, recreation, water supply and conservation, water quality, energy needs, safety, food and fiber production, mineral needs, considerations of property ownership and, in general, the needs and welfare of the people.

The U.S. Army Corps of Engineers is soliciting comments from the public, federal, state, and local agencies and officials, Indian Tribes, and other interested parties in order to consider and evaluate the impacts of this proposed activity. Any comments received will be considered by the U.S. Army Corps of Engineers to determine whether to make, modify, condition, or deny a permit for this proposal. To make this decision, comments are used to assess impacts on endangered species, historic properties, water quality, general environmental effects, and other public interest factors listed

above. Comments are used in the preparation of an Environmental Assessment and/or an Environmental Impact Statement pursuant to the National Environmental Policy Act. Comments are also used to determine the need for a public hearing and to determine the overall public interest of the proposed activity.

The New Orleans District is unaware of properties listed on the National Register of Historic Places near the proposed work. The possibility exists that the proposed work may damage or destroy presently unknown archeological, scientific, prehistorical, historical sites, or data. Issuance of this public notice solicits input from the State Archeologist and State Historic Preservation Officer regarding potential impacts to cultural resources.

Our initial finding is that the proposed work would not affect any species, nor affect any habitat designated as critical to the survival and recovery of such species, listed as endangered by the U.S. Department of Commerce.

The New Orleans District has determined that the proposed project is located in waters known to be utilized by the west Indian manatee (*Trichechus manatus*) and determined that the proposed activity is not likely to adversely affect the species, based on the Standard Local Operating Procedure for Endangered Species of Louisiana (SLOPES), dated October 22, 2014, between the U.S. Army Corps of Engineers and U.S. Fish and Wildlife Service, Ecological Services Office. If this permit modification is issued, the *Standard Manatee Conditions for In-Water Activities* will be included in the authorization.

This notice initiates the Essential Fish Habitat (EFH) consultation requirements of the Magnuson-Stevens Fishery Conservation and Management Act. The applicant's proposal would result in the destruction or alteration of **12 acres** of EFH utilized by various life stages of red drum and penaeid shrimp. Our initial determination is that the proposed action would not have a substantial adverse impact on EFH or federally managed fisheries in the Gulf of Mexico. Our final determination relative to project impacts and the need for mitigation measures is subject to review by and coordination with the National Marine Fisheries Service.

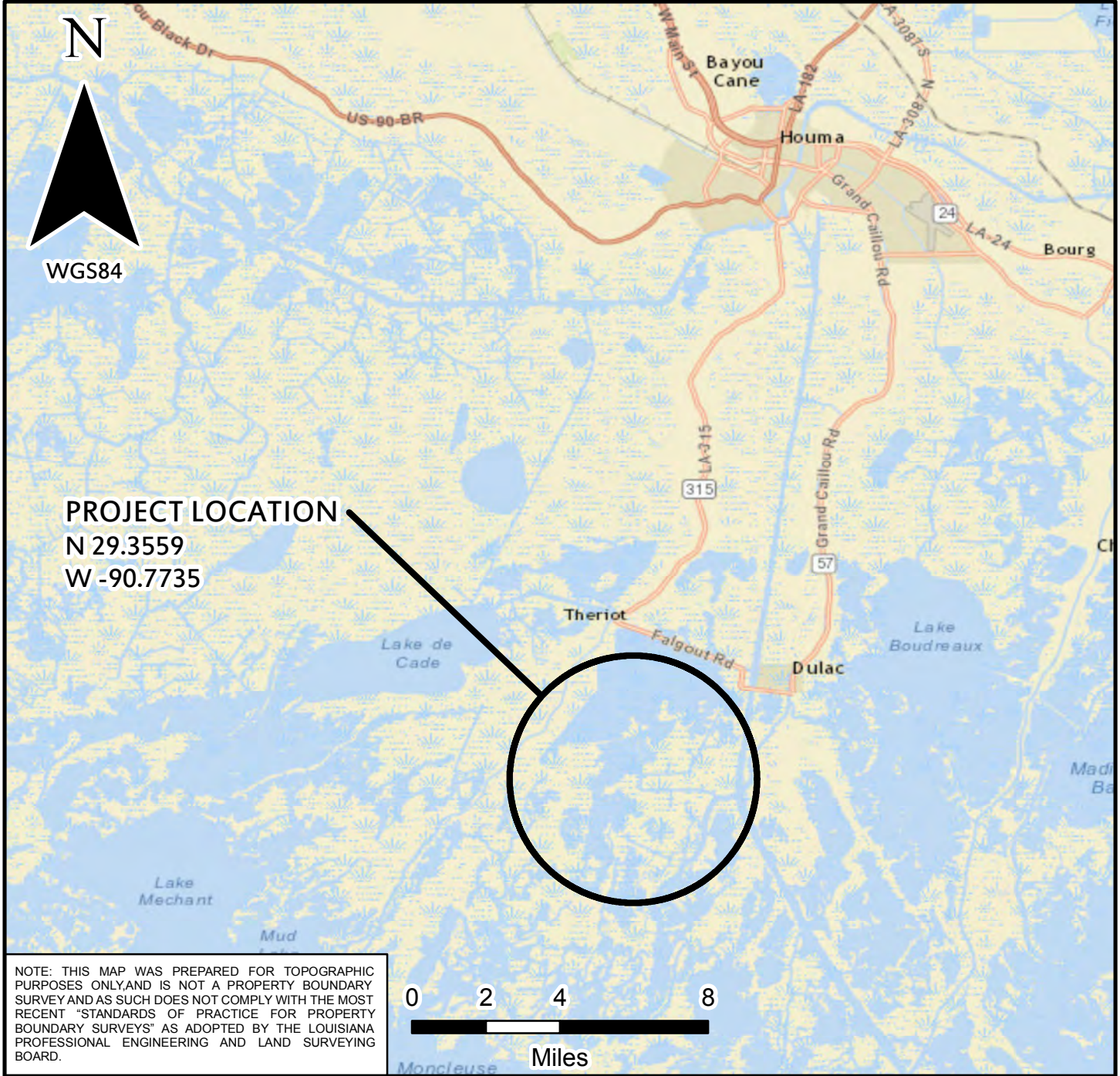
If the proposed work involves deposits of dredged or fill material into navigable waters, the evaluation of the probable impacts will include the application of guidelines established by the Administrator of the Environmental Protection Agency. Also, a certification that the proposed activity will not violate applicable water quality standards will be required from the Department of Environmental Quality, Office of Environmental Services, before a permit is issued.

Any person may request, in writing, within the comment period specified in this notice, that a public hearing be held to consider this application. Requests for public hearings shall state, with particularity, the reasons for holding a public hearing. You are requested to communicate the information contained in this notice to any other parties whom you deem likely to have interest in the matter.

You are requested to communicate the information contained in this notice to any other parties whom you deem likely to have interest in the matter.

John M. Herman
Chief, Central Evaluation Section
Regulatory Branch

Enclosure



PROJECT LOCATION
N 29.3559
W -90.7735

NOTE: THIS MAP WAS PREPARED FOR TOPOGRAPHIC PURPOSES ONLY, AND IS NOT A PROPERTY BOUNDARY SURVEY AND AS SUCH DOES NOT COMPLY WITH THE MOST RECENT "STANDARDS OF PRACTICE FOR PROPERTY BOUNDARY SURVEYS" AS ADOPTED BY THE LOUISIANA PROFESSIONAL ENGINEERING AND LAND SURVEYING BOARD.



PROJECT LOCATION IS APPROXIMATELY 16 MILES SOUTH SOUTHWEST OF HOUMA, LOUISIANA.

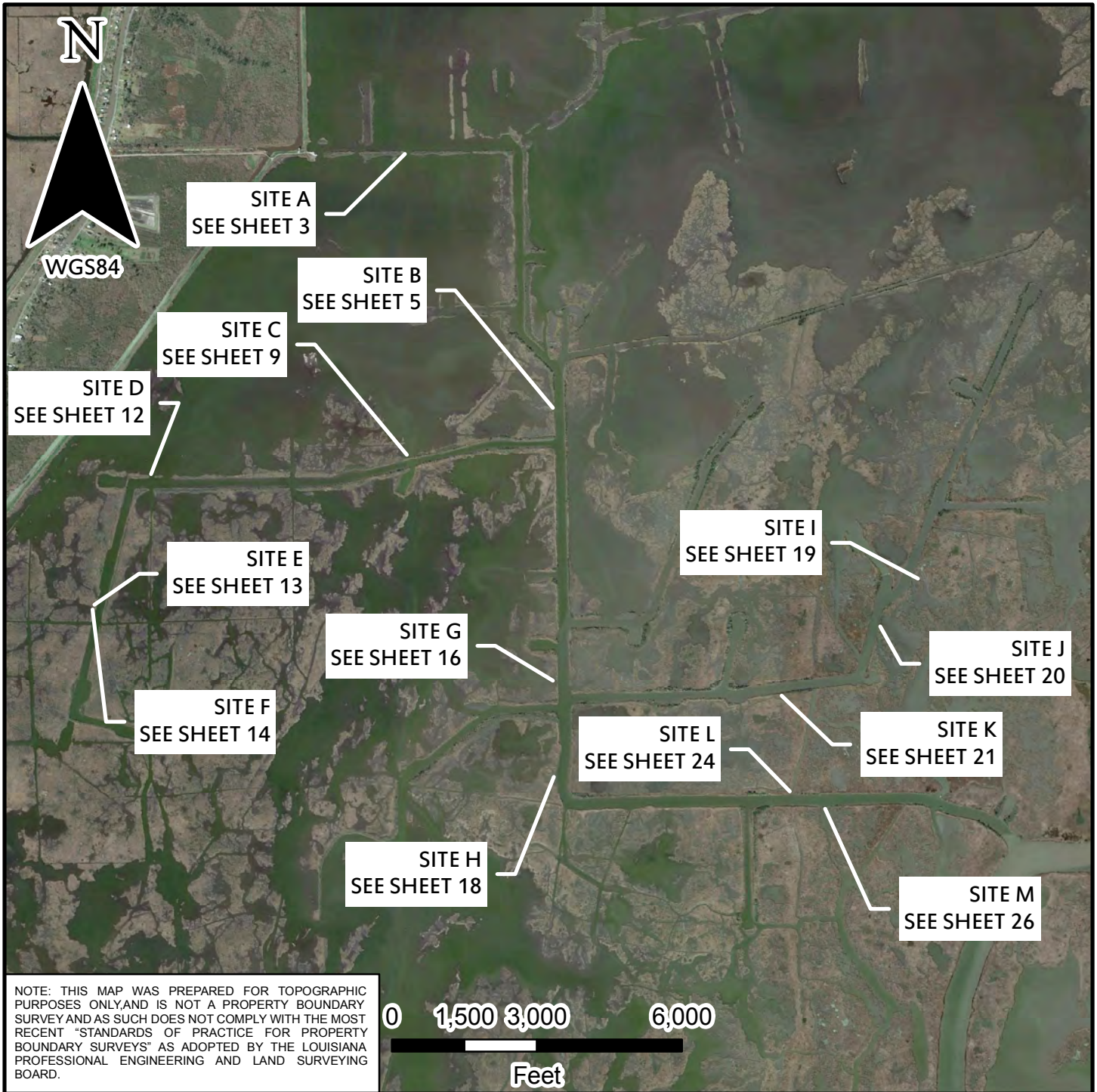
HARRY BOURG CORPORATION

VICINITY MAP
PROPERTY RESTORATION
SECTION 1, T20S-R16E; SECTION 2, T20S-R16E; SECTION 7, T20S-R17E;
SECTION 8, T20S-R17E; SECTION 11, T20S-R16E; SECTION 12, T20S-R16E; SECTION 36, T19S-R16E
TERREBONNE, LOUISIANA



SURVEYING · ENGINEERING · ENVIRONMENTAL SERVICES · FIELD SERVICES · GIS
283 CORPORATE DRIVE · PO BOX 3106 · HOUMA, LOUISIANA 70361 · (985) 879-2731
10101 SOUTHWEST FREEWAY · SUITE 620 · HOUSTON, TEXAS 77071 · (713) 219-1470

DRAWN BY: DPC	SHEET: 1 OF 29
CHECKED BY:	SCALE: AS SHOWN
APPROVED BY: WCC	DATE: 3/7/2016
REVISION BY:	JOB NO.: 12379-00
GIS FILE: 12379_SHEET_1_VICINITY.MXD	

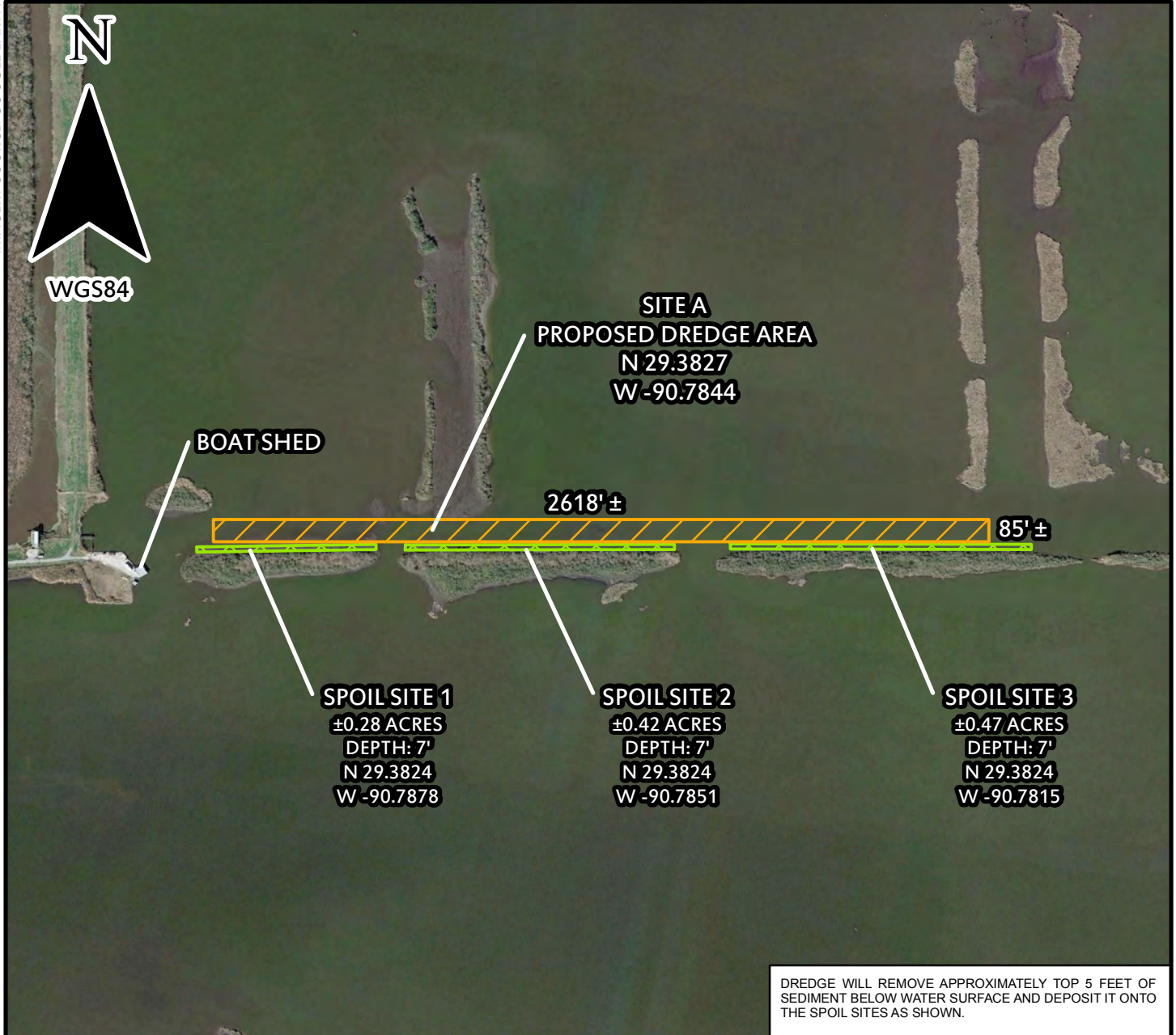


HARRY BOURG CORPORATION

**PLAN VIEW
TERREBONNE PARISH, LOUISIANA**

SURVEYING · ENGINEERING · ENVIRONMENTAL SERVICES · FIELD SERVICES · GIS
 283 CORPORATE DRIVE · PO BOX 3106 · HOUMA, LOUISIANA 70361 · (985) 879-2731
 10101 SOUTHWEST FREEWAY · SUITE 620 · HOUSTON, TEXAS 77071 · (713) 219-1470

DRAWN BY: DPC	SHEET: 2 OF 29
CHECKED BY:	SCALE: AS SHOWN
APPROVED BY: WCC	DATE: 3/7/2016
REVISION BY:	JOB NO.: 12379-00
GIS FILE: 12379_SHEET_2_PLAN.MXD	



NOTE: THIS MAP WAS PREPARED FOR TOPOGRAPHIC PURPOSES ONLY, AND IS NOT A PROPERTY BOUNDARY SURVEY AND AS SUCH DOES NOT COMPLY WITH THE MOST RECENT "STANDARDS OF PRACTICE FOR PROPERTY BOUNDARY SURVEYS" AS ADOPTED BY THE LOUISIANA PROFESSIONAL ENGINEERING AND LAND SURVEYING BOARD.



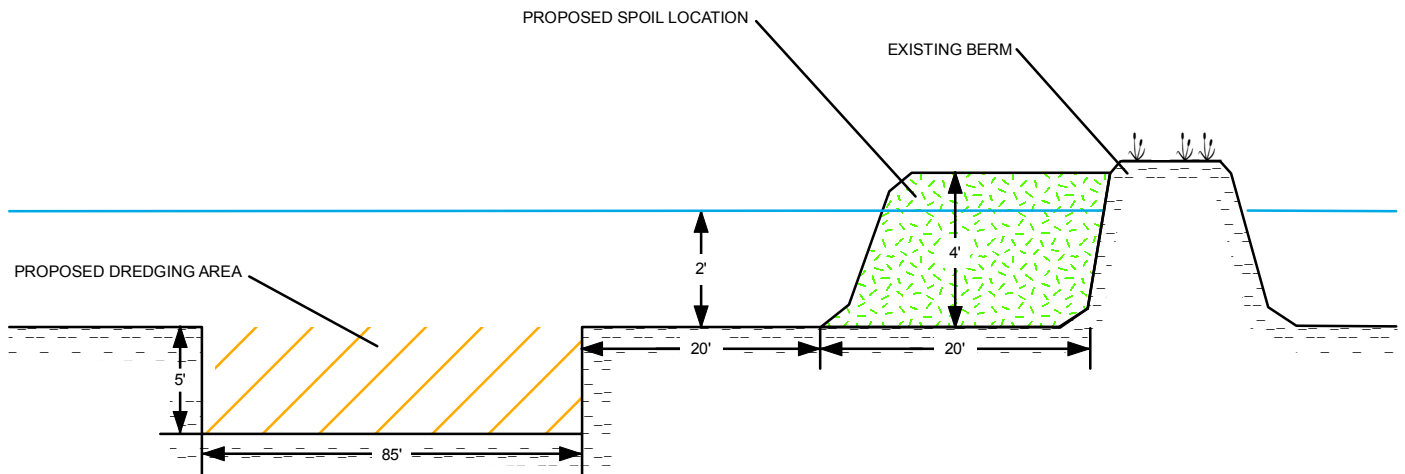
DREDGE WILL REMOVE APPROXIMATELY TOP 5 FEET OF SEDIMENT BELOW WATER SURFACE AND DEPOSIT IT ONTO THE SPOIL SITES AS SHOWN.
 APPROXIMATELY 41,039± CUBIC YARDS OF WATER BOTTOM MATERIAL TO BE DREDGED.
 THE DISTANCE BETWEEN THE DREDGE AREA AND SPOIL SITES IS APPROXIMATELY 20 FEET.
 FOR A TYPICAL PROFILE THROUGH THE DREDGE AND SPOIL AREAS, SEE SHEET 4.

HARRY BOURG CORPORATION

**PROPOSED DREDGE
 LOCATED IN SECTION 36, T19S-R16E
 TERREBONNE PARISH, LOUISIANA**

DRAWN BY: DPC	SHEET: 3 OF 29
CHECKED BY:	SCALE: AS SHOWN
APPROVED BY: WCC	DATE: 3/7/2016
REVISION BY:	JOB NO.: 12379-00
GIS FILE: 12379_SHEET_3_SITE_A.MXD	

G:\1237900\MAPS\PACKET\12379_SHEET_4_PROFILE_SITE_A.MXD



NOTE: THIS MAP WAS PREPARED FOR TOPOGRAPHIC PURPOSES ONLY, AND IS NOT A PROPERTY BOUNDARY SURVEY AND AS SUCH DOES NOT COMPLY WITH THE MOST RECENT "STANDARDS OF PRACTICE FOR PROPERTY BOUNDARY SURVEYS" AS ADOPTED BY THE LOUISIANA PROFESSIONAL ENGINEERING AND LAND SURVEYING BOARD.

THIS GRAPHIC REPRESENTS A TYPICAL PROFILE OF THE PROPOSED DREDGE ACTIVITIES AT SITE A. SEE SHEET 3 FOR SITE A PLAN VIEW.

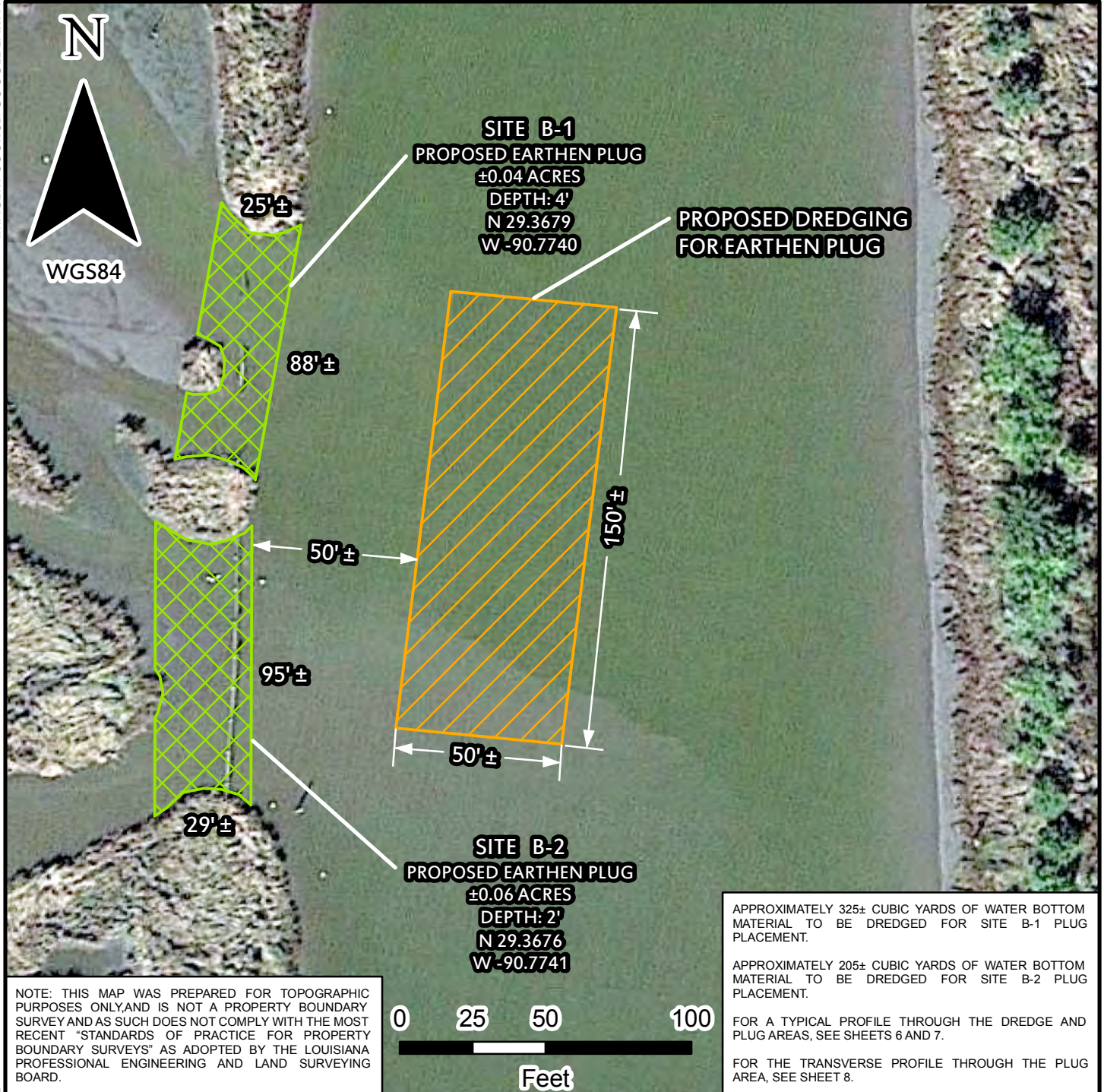
HARRY BOURG CORPORATION

PROPOSED DREDGE
SITE A DREDGE AREA
TERREBONNE PARISH, LOUISIANA



SURVEYING · ENGINEERING · ENVIRONMENTAL SERVICES · FIELD SERVICES · GIS
283 CORPORATE DRIVE · PO BOX 3106 · HOUMA, LOUISIANA 70361 · (985) 879-2731
10101 SOUTHWEST FREEWAY · SUITE 620 · HOUSTON, TEXAS 77071 · (713) 219-1470

DRAWN BY: DPC	SHEET: 4 OF 29
CHECKED BY:	NOT TO SCALE
APPROVED BY: WCC	DATE: 3/7/2016
REVISION BY:	JOB NO.: 12379-00
GIS FILE: 12379_SHEET_4_PROFILE_SITE_A.MXD	



HARRY BOURG CORPORATION

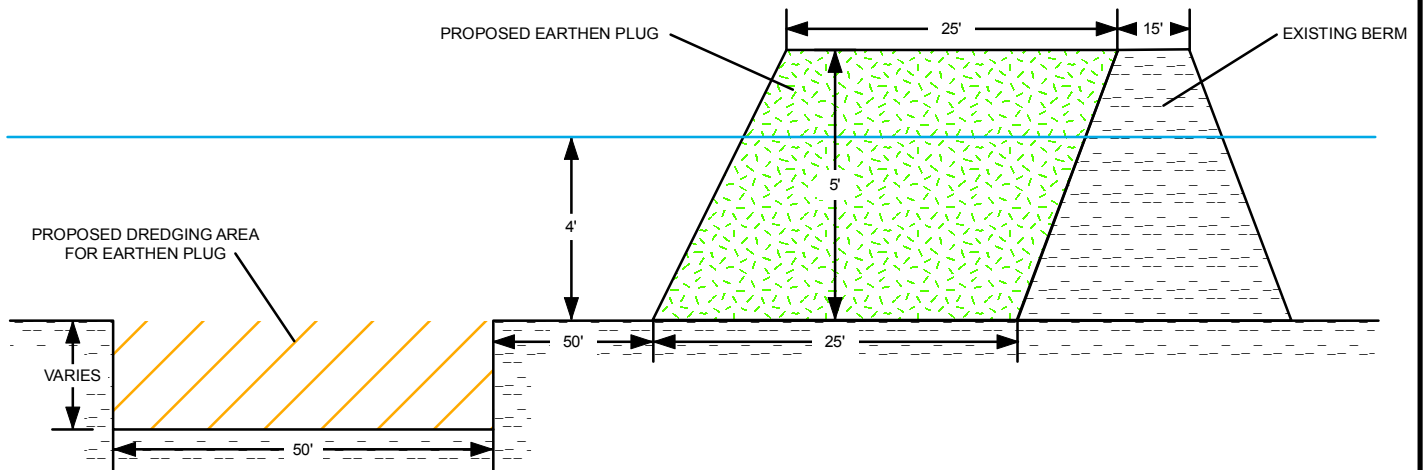
PROPOSED DREDGE AND FILL
LOCATED IN SECTION 1, T20S-R16E
TERREBONNE PARISH, LOUISIANA



SURVEYING · ENGINEERING · ENVIRONMENTAL SERVICES · FIELD SERVICES · GIS
283 CORPORATE DRIVE · PO BOX 3106 · HOUMA, LOUISIANA 70361 · (985) 879-2731
10101 SOUTHWEST FREEWAY · SUITE 620 · HOUSTON, TEXAS 77071 · (713) 219-1470

DRAWN BY: DPC	SHEET: 5 OF 29
CHECKED BY:	SCALE: AS SHOWN
APPROVED BY: WCC	DATE: 3/7/2016
REVISION BY:	JOB NO.: 12379-00
GIS FILE: 12379_SHEET_5_SITE_B.MXD	

G:\1237900\MAPS\PACKET\12379_SHEET_6_B1_PROFILE.MXD



NOTE: THIS MAP WAS PREPARED FOR TOPOGRAPHIC PURPOSES ONLY, AND IS NOT A PROPERTY BOUNDARY SURVEY AND AS SUCH DOES NOT COMPLY WITH THE MOST RECENT "STANDARDS OF PRACTICE FOR PROPERTY BOUNDARY SURVEYS" AS ADOPTED BY THE LOUISIANA PROFESSIONAL ENGINEERING AND LAND SURVEYING BOARD.

FOR THE PLAN VIEW OF SITE B1, SEE SHEET 5.

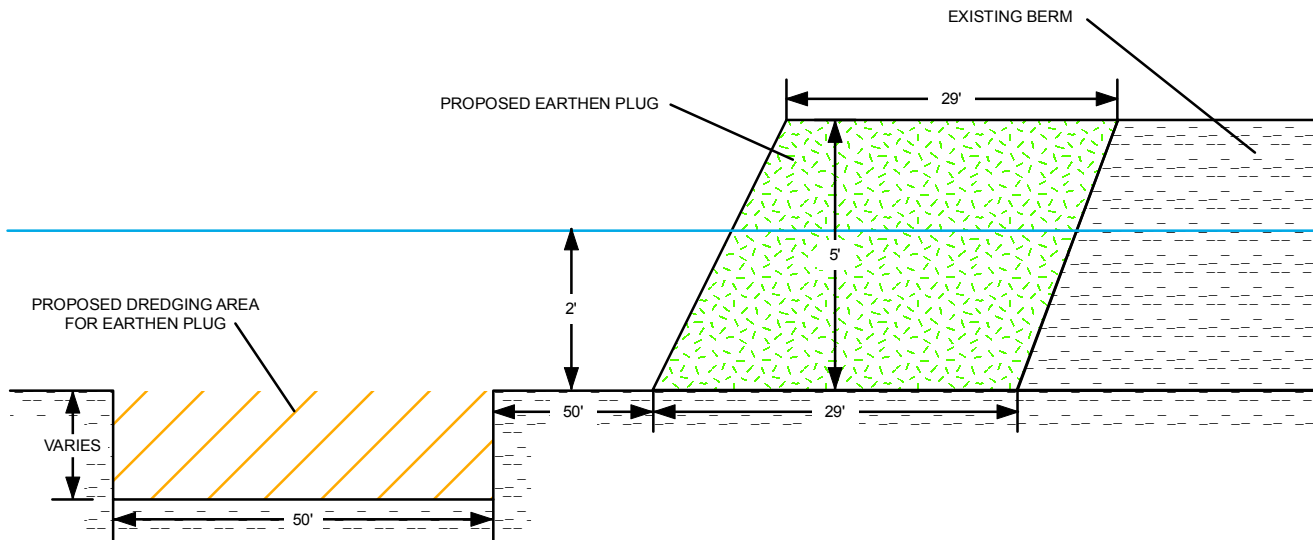
HARRY BOURG CORPORATION

PROPOSED DREDGE AND FILL SITE B1 PROFILE TERREBONNE PARISH, LOUISIANA



SURVEYING · ENGINEERING · ENVIRONMENTAL SERVICES · FIELD SERVICES · GIS
283 CORPORATE DRIVE · PO BOX 3106 · HOUMA, LOUISIANA 70361 · (985) 879-2731
10101 SOUTHWEST FREEWAY · SUITE 620 · HOUSTON, TEXAS 77071 · (713) 219-1470

DRAWN BY: DPC	SHEET: 6 OF 29
CHECKED BY:	NOT TO SCALE
APPROVED BY: WCC	DATE: 4/12/2016
REVISION BY:	JOB NO.: 12379-00
GIS FILE: 12379_SHEET_6_B1_PROFILE.MXD	



NOTE: THIS MAP WAS PREPARED FOR TOPOGRAPHIC PURPOSES ONLY, AND IS NOT A PROPERTY BOUNDARY SURVEY AND AS SUCH DOES NOT COMPLY WITH THE MOST RECENT "STANDARDS OF PRACTICE FOR PROPERTY BOUNDARY SURVEYS" AS ADOPTED BY THE LOUISIANA PROFESSIONAL ENGINEERING AND LAND SURVEYING BOARD.

FOR THE PLAN VIEW OF SITE B2, SEE SHEET 5.

HARRY BOURG CORPORATION

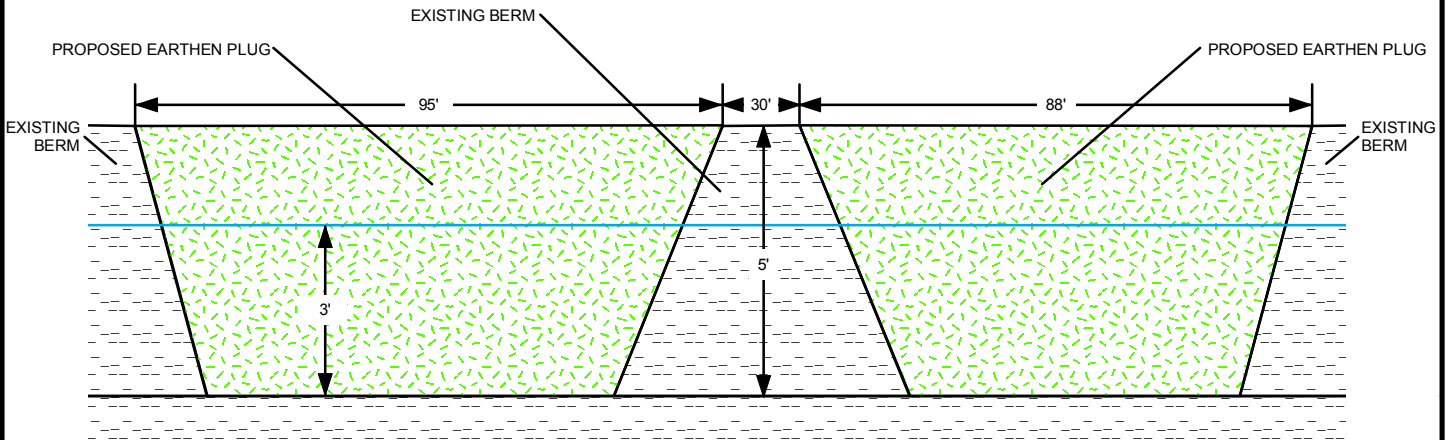
PROPOSED DREDGE AND FILL SITE B2 PROFILE TERREBONNE PARISH, LOUISIANA



SURVEYING · ENGINEERING · ENVIRONMENTAL SERVICES · FIELD SERVICES · GIS
283 CORPORATE DRIVE · PO BOX 3106 · HOUMA, LOUISIANA 70361 · (985) 879-2731
10101 SOUTHWEST FREEWAY · SUITE 620 · HOUSTON, TEXAS 77071 · (713) 219-1470

DRAWN BY: DPC	SHEET: 7 OF 29
CHECKED BY:	NOT TO SCALE
APPROVED BY: WCC	DATE: 4/12/2016
REVISION BY:	JOB NO.: 12379-00
GIS FILE: 12379_SHEET_7_B2_PROFILE.MXD	

G:\1237900\MAPS\PACKET\12379_SHEET_7_B2_PROFILE.MXD



NOTE: THIS MAP WAS PREPARED FOR TOPOGRAPHIC PURPOSES ONLY, AND IS NOT A PROPERTY BOUNDARY SURVEY AND AS SUCH DOES NOT COMPLY WITH THE MOST RECENT "STANDARDS OF PRACTICE FOR PROPERTY BOUNDARY SURVEYS" AS ADOPTED BY THE LOUISIANA PROFESSIONAL ENGINEERING AND LAND SURVEYING BOARD.

FOR THE PLAN VIEW OF SITE B, SEE SHEET 5.

HARRY BOURG CORPORATION

PROPOSED DREDGE AND FILL
 SITE B TRANSVERSE PROFILE
 TERREBONNE PARISH, LOUISIANA



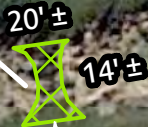
SURVEYING · ENGINEERING · ENVIRONMENTAL SERVICES · FIELD SERVICES · GIS
 283 CORPORATE DRIVE · PO BOX 3106 · HOUMA, LOUISIANA 70361 · (985) 879-2731
 10101 SOUTHWEST FREEWAY · SUITE 620 · HOUSTON, TEXAS 77071 · (713) 219-1470

DRAWN BY: DPC	SHEET: 8 OF 29
CHECKED BY:	NOT TO SCALE
APPROVED BY: WCC	DATE: 4/12/2016
REVISION BY:	JOB NO.: 12379-00
GIS FILE: 12379_SHEET_8_B_TRANS_PROFILE.MXD	

G:\1237900\MAPS\PACKET\12379_SHEET_8_B_TRANS_PROFILE.MXD

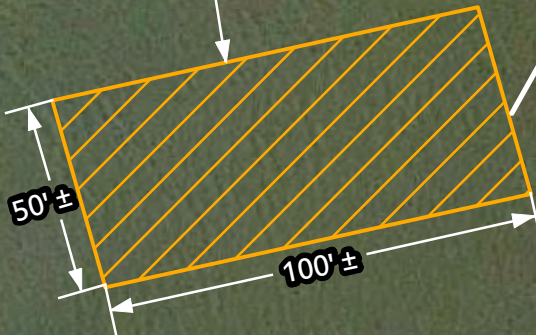


SITE C
PROPOSED EARTHEN PLUG
±0.004 ACRES
DEPTH: 6'
N 29.3648°
W -90.7833°



50' ±

PROPOSED DREDGING FOR EARTHEN PLUG



NOTE: THIS MAP WAS PREPARED FOR TOPOGRAPHIC PURPOSES ONLY, AND IS NOT A PROPERTY BOUNDARY SURVEY AND AS SUCH DOES NOT COMPLY WITH THE MOST RECENT "STANDARDS OF PRACTICE FOR PROPERTY BOUNDARY SURVEYS" AS ADOPTED BY THE LOUISIANA PROFESSIONAL ENGINEERING AND LAND SURVEYING BOARD.



APPROXIMATELY 62± CUBIC YARDS OF WATER BOTTOM MATERIAL TO BE DREDGED FOR PLUG PLACEMENT.

FOR THE PROFILE VIEW OF THE DREDGE AND PLUG AREA, SEE SHEET 10.

FOR THE TRANSVERSE PROFILE THROUGH THE PLUG AREA, SEE SHEET 11.

HARRY BOURG CORPORATION

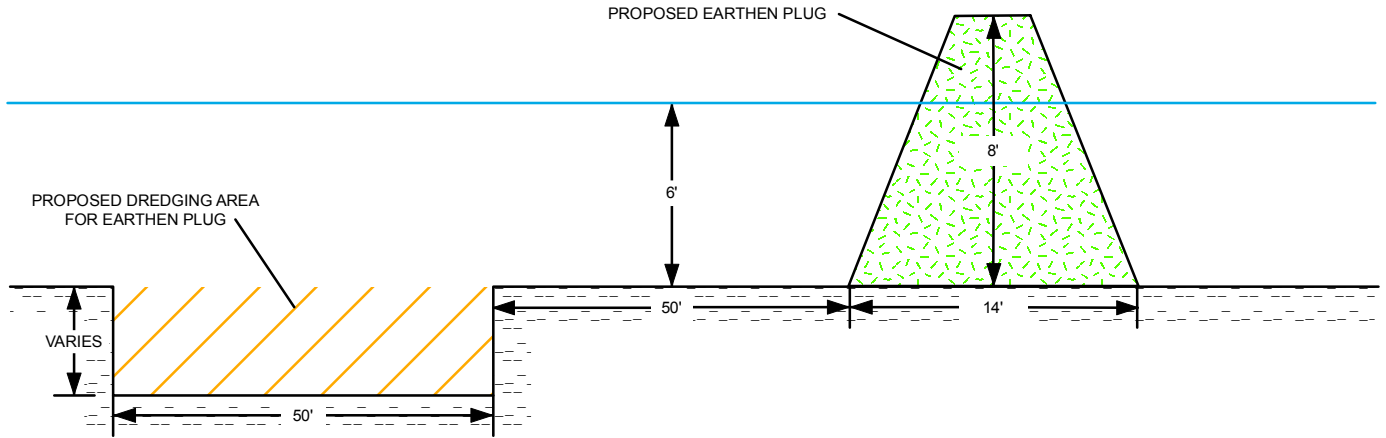
PROPOSED DREDGE AND FILL
LOCATED IN SECTION 1, T20S-R16E
TERREBONNE PARISH, LOUISIANA



SURVEYING · ENGINEERING · ENVIRONMENTAL SERVICES · FIELD SERVICES · GIS
283 CORPORATE DRIVE · PO BOX 3106 · HOUMA, LOUISIANA 70361 · (985) 879-2731
10101 SOUTHWEST FREEWAY · SUITE 620 · HOUSTON, TEXAS 77071 · (713) 219-1470

DRAWN BY: DPC	SHEET: 9 OF 29
CHECKED BY:	SCALE: AS SHOWN
APPROVED BY: WCC	DATE: 3/7/2016
REVISION BY:	JOB NO.: 12379-00
GIS FILE: 12379_SHEET_9_SITE_C.MXD	

G:\1237900\MAPS\PACKET\12379_SHEET_10_C_PROFILE.MXD



NOTE: THIS MAP WAS PREPARED FOR TOPOGRAPHIC PURPOSES ONLY, AND IS NOT A PROPERTY BOUNDARY SURVEY AND AS SUCH DOES NOT COMPLY WITH THE MOST RECENT "STANDARDS OF PRACTICE FOR PROPERTY BOUNDARY SURVEYS" AS ADOPTED BY THE LOUISIANA PROFESSIONAL ENGINEERING AND LAND SURVEYING BOARD.

FOR THE PLAN VIEW OF SITE C, SEE SHEET 9.

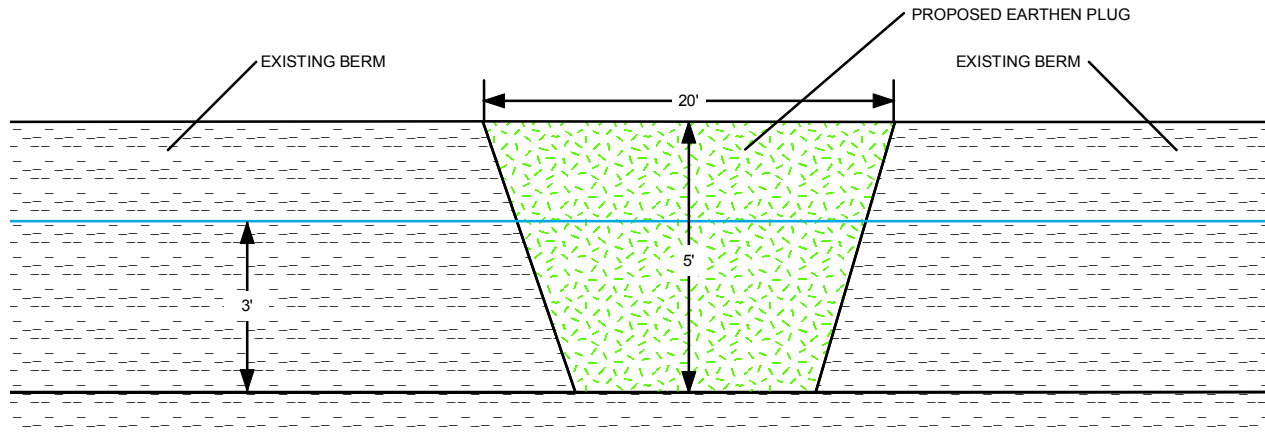
HARRY BOURG CORPORATION

PROPOSED DREDGE AND FILL SITE C PROFILE TERREBONNE PARISH, LOUISIANA



SURVEYING · ENGINEERING · ENVIRONMENTAL SERVICES · FIELD SERVICES · GIS
283 CORPORATE DRIVE · PO BOX 3106 · HOUMA, LOUISIANA 70361 · (985) 879-2731
10101 SOUTHWEST FREEWAY · SUITE 620 · HOUSTON, TEXAS 77071 · (713) 219-1470

DRAWN BY: DPC	SHEET: 10 OF 29
CHECKED BY:	NOT TO SCALE
APPROVED BY: WCC	DATE: 3/7/2016
REVISION BY:	JOB NO.: 12379-00
GIS FILE: 12379_SHEET_10_C_PROFILE.MXD	



NOTE: THIS MAP WAS PREPARED FOR TOPOGRAPHIC PURPOSES ONLY, AND IS NOT A PROPERTY BOUNDARY SURVEY AND AS SUCH DOES NOT COMPLY WITH THE MOST RECENT "STANDARDS OF PRACTICE FOR PROPERTY BOUNDARY SURVEYS" AS ADOPTED BY THE LOUISIANA PROFESSIONAL ENGINEERING AND LAND SURVEYING BOARD.

FOR PLAN VIEW OF SITE C, SEE SHEET 9.

HARRY BOURG CORPORATION

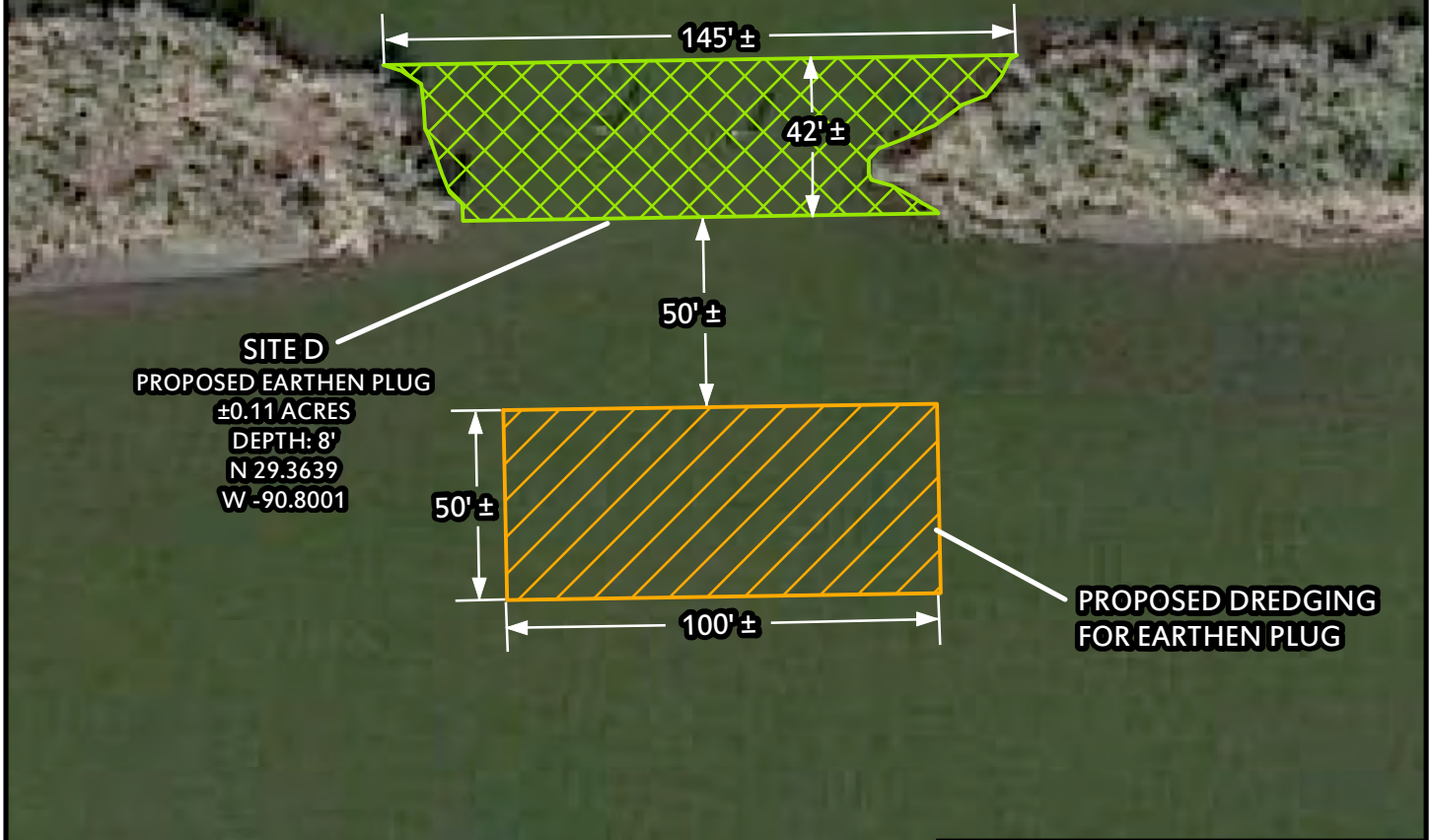
PROPOSED DREDGE AND FILL
 SITE C TRANSVERSE PROFILE
 TERREBONNE PARISH, LOUISIANA



SURVEYING · ENGINEERING · ENVIRONMENTAL SERVICES · FIELD SERVICES · GIS
 283 CORPORATE DRIVE · PO BOX 3106 · HOUMA, LOUISIANA 70361 · (985) 879-2731
 10101 SOUTHWEST FREEWAY · SUITE 620 · HOUSTON, TEXAS 77071 · (713) 219-1470

DRAWN BY: DPC	SHEET: 11 OF 29
CHECKED BY:	NOT TO SCALE
APPROVED BY: WCC	DATE: 4/12/2016
REVISION BY:	JOB NO.: 12379-00
GIS FILE: 12379_SHEET_11_C_TRANS_PROFILE.MXD	

G:\1237900\MAPS\PACKET\12379_SHEET_11_C_TRANS_PROFILE.MXD



SITE D
PROPOSED EARTHEN PLUG
±0.11 ACRES
DEPTH: 8'
N 29.3639
W -90.8001

PROPOSED DREDGING FOR EARTHEN PLUG

NOTE: THIS MAP WAS PREPARED FOR TOPOGRAPHIC PURPOSES ONLY, AND IS NOT A PROPERTY BOUNDARY SURVEY AND AS SUCH DOES NOT COMPLY WITH THE MOST RECENT "STANDARDS OF PRACTICE FOR PROPERTY BOUNDARY SURVEYS" AS ADOPTED BY THE LOUISIANA PROFESSIONAL ENGINEERING AND LAND SURVEYING BOARD.



APPROXIMATELY 1807± CUBIC YARDS OF WATER BOTTOM MATERIAL TO BE DREDGED FOR PLUG PLACEMENT.
FOR A TYPICAL PROFILE THROUGH THE DREDGE AND PLUG AREA, SEE SHEET 27.
FOR A TYPICAL TRANSVERSE PROFILE THROUGH THE PLUG AREA, SEE SHEET 28.

HARRY BOURG CORPORATION

PROPOSED DREDGE AND FILL
LOCATED IN SECTION 2, T20S-R16E
TERREBONNE PARISH, LOUISIANA



SURVEYING · ENGINEERING · ENVIRONMENTAL SERVICES · FIELD SERVICES · GIS
283 CORPORATE DRIVE · PO BOX 3106 · HOUMA, LOUISIANA 70361 · (985) 879-2731
10101 SOUTHWEST FREEWAY · SUITE 620 · HOUSTON, TEXAS 77071 · (713) 219-1470

DRAWN BY: DPC	SHEET: 12 OF 29
CHECKED BY:	SCALE: AS SHOWN
APPROVED BY: WCC	DATE: 3/7/2016
REVISION BY:	JOB NO.: 12379-00
GIS FILE: 12379_SHEET_12_SITE_D.MXD	



NOTE: THIS MAP WAS PREPARED FOR TOPOGRAPHIC PURPOSES ONLY, AND IS NOT A PROPERTY BOUNDARY SURVEY AND AS SUCH DOES NOT COMPLY WITH THE MOST RECENT "STANDARDS OF PRACTICE FOR PROPERTY BOUNDARY SURVEYS" AS ADOPTED BY THE LOUISIANA PROFESSIONAL ENGINEERING AND LAND SURVEYING BOARD.



APPROXIMATELY 86± CUBIC YARDS OF WATER BOTTOM MATERIAL TO BE DREDGED FOR PLUG PLACEMENT.

FOR A TYPICAL PROFILE THROUGH THE DREDGE AND PLUG AREA, SEE SHEET 27.

FOR A TYPICAL TRANSVERSE PROFILE THROUGH THE PLUG AREA, SEE SHEET 28.

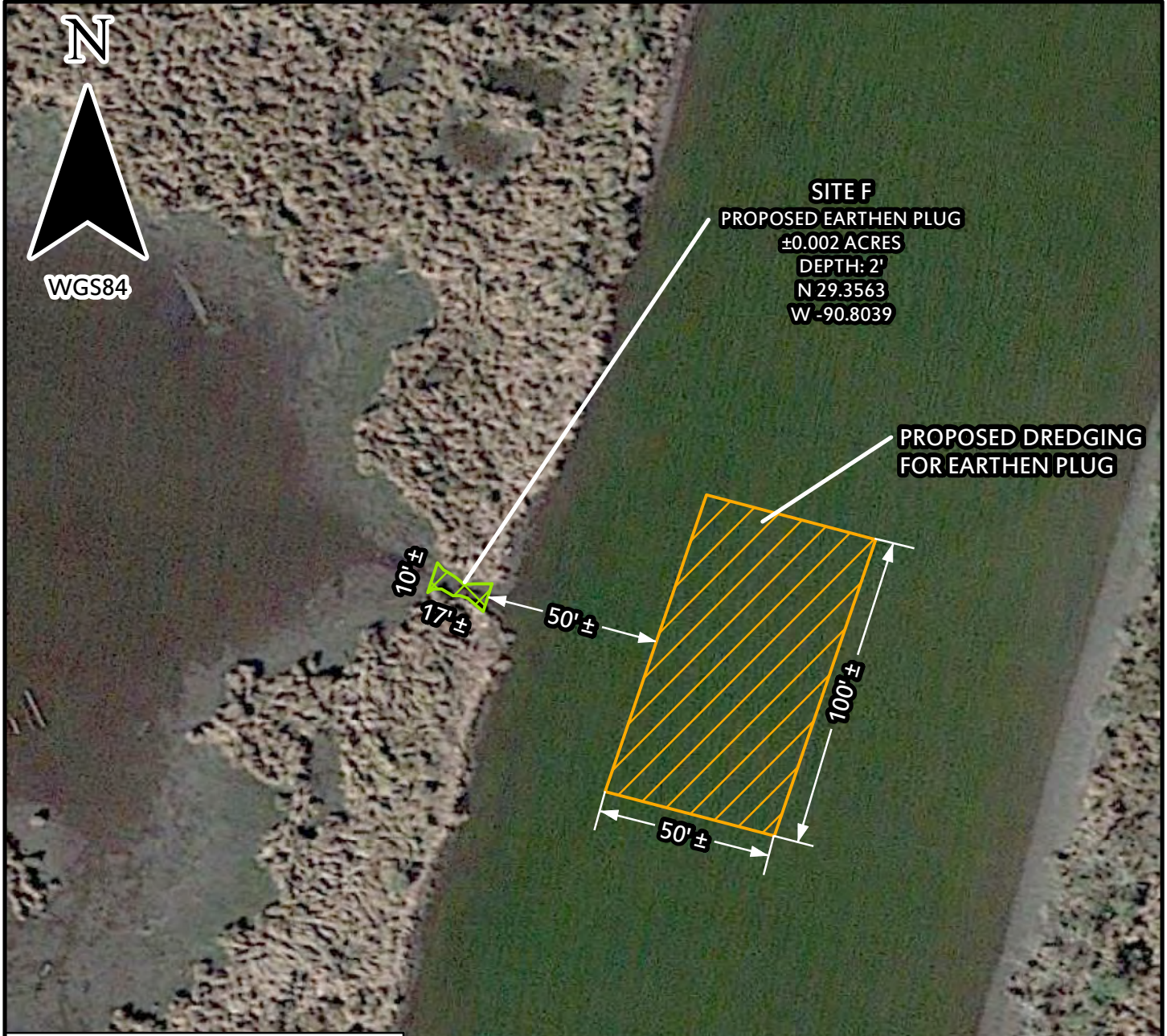
HARRY BOURG CORPORATION

**PROPOSED DREDGE AND FILL
LOCATED IN SECTION 2, T20S-R16E
TERREBONNE PARISH, LOUISIANA**



SURVEYING · ENGINEERING · ENVIRONMENTAL SERVICES · FIELD SERVICES · GIS
283 CORPORATE DRIVE · PO BOX 3106 · HOUMA, LOUISIANA 70361 · (985) 879-2731
10101 SOUTHWEST FREEWAY · SUITE 620 · HOUSTON, TEXAS 77071 · (713) 219-1470

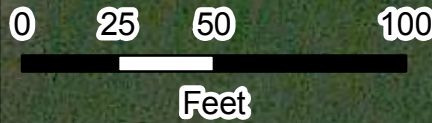
DRAWN BY: DPC	SHEET: 13 OF 29
CHECKED BY:	SCALE: AS SHOWN
APPROVED BY: WCC	DATE: 3/7/2016
REVISION BY:	JOB NO.: 12379-00
GIS FILE: 12379_SHEET_13_SITE_E.MXD	



SITE F
PROPOSED EARTHEN PLUG
±0.002 ACRES
DEPTH: 2'
N 29.3563
W -90.8039

**PROPOSED DREDGING
FOR EARTHEN PLUG**

NOTE: THIS MAP WAS PREPARED FOR TOPOGRAPHIC PURPOSES ONLY, AND IS NOT A PROPERTY BOUNDARY SURVEY AND AS SUCH DOES NOT COMPLY WITH THE MOST RECENT "STANDARDS OF PRACTICE FOR PROPERTY BOUNDARY SURVEYS" AS ADOPTED BY THE LOUISIANA PROFESSIONAL ENGINEERING AND LAND SURVEYING BOARD.



APPROXIMATELY 13± CUBIC YARDS OF WATER BOTTOM MATERIAL TO BE DREDGED FOR PLUG PLACEMENT.
FOR A PROFILE THROUGH THE DREDGE AND PLUG AREA, SEE SHEET 15.

HARRY BOURG CORPORATION

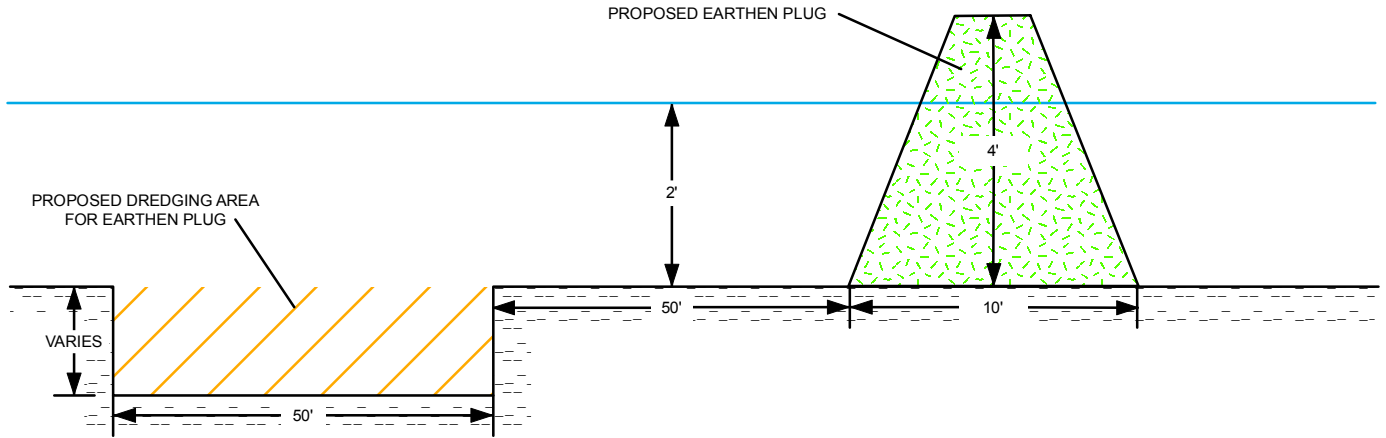
PROPOSED DREDGE AND FILL
LOCATED IN SECTION 2, T20S-R16E
TERREBONNE PARISH, LOUISIANA



SURVEYING · ENGINEERING · ENVIRONMENTAL SERVICES · FIELD SERVICES · GIS
283 CORPORATE DRIVE · PO BOX 3106 · HOUMA, LOUISIANA 70361 · (985) 879-2731
10101 SOUTHWEST FREEWAY · SUITE 620 · HOUSTON, TEXAS 77071 · (713) 219-1470

DRAWN BY: DPC	SHEET: 14 OF 29
CHECKED BY:	SCALE: AS SHOWN
APPROVED BY: WCC	DATE: 3/7/2016
REVISION BY:	JOB NO.: 12379-00
GIS FILE: 12379_SHEET_14_SITE_F.MXD	

G:\1237900\MAPS\PACKET\12379_SHEET_15_F_PROFILE.MXD



NOTE: THIS MAP WAS PREPARED FOR TOPOGRAPHIC PURPOSES ONLY, AND IS NOT A PROPERTY BOUNDARY SURVEY AND AS SUCH DOES NOT COMPLY WITH THE MOST RECENT "STANDARDS OF PRACTICE FOR PROPERTY BOUNDARY SURVEYS" AS ADOPTED BY THE LOUISIANA PROFESSIONAL ENGINEERING AND LAND SURVEYING BOARD.

FOR SITE F PLAN VIEW, SEE SHEET 14.

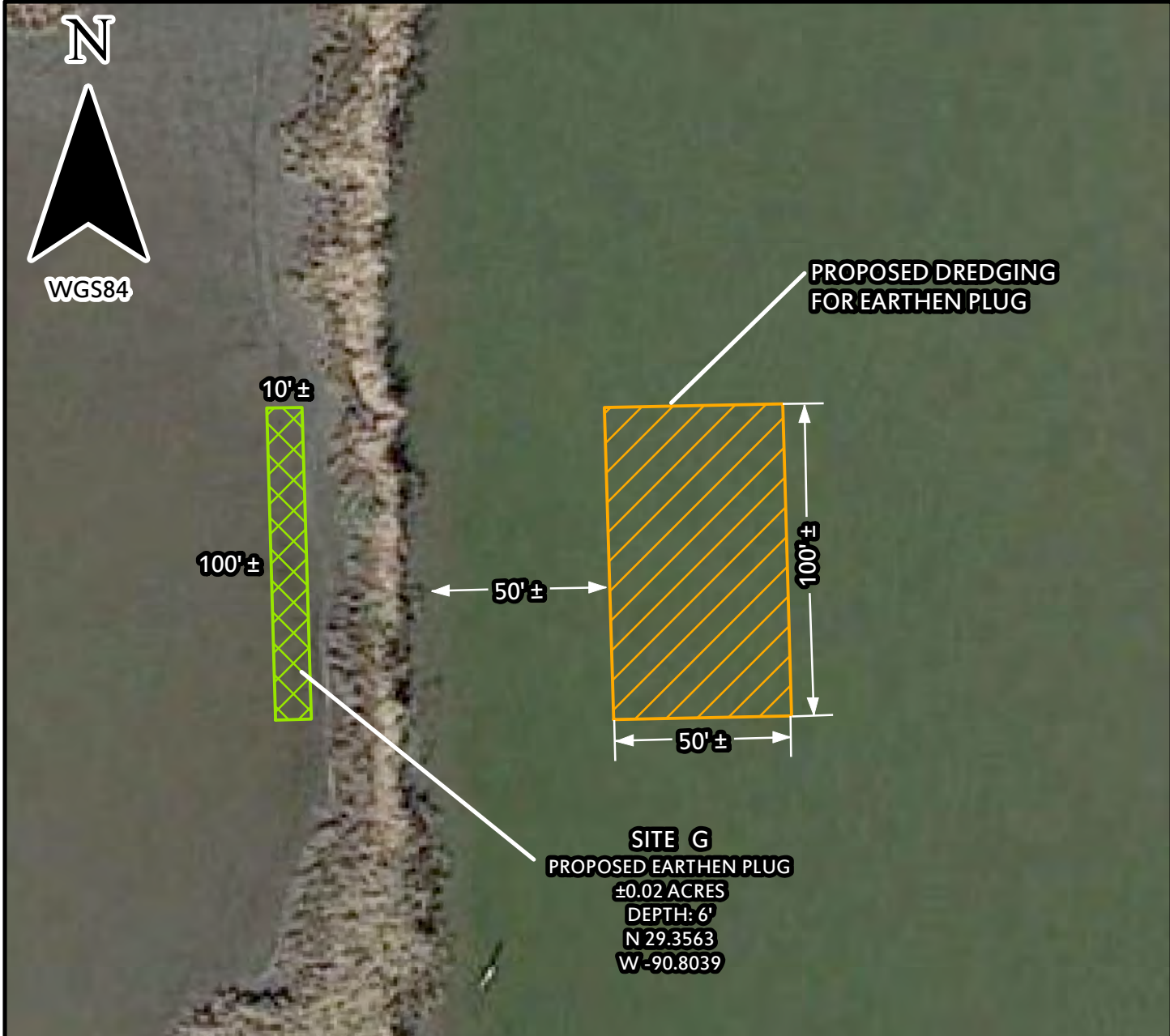
HARRY BOURG CORPORATION

PROPOSED DREDGE AND FILL SITE F PROFILE TERREBONNE PARISH, LOUISIANA



SURVEYING · ENGINEERING · ENVIRONMENTAL SERVICES · FIELD SERVICES · GIS
283 CORPORATE DRIVE · PO BOX 3106 · HOUMA, LOUISIANA 70361 · (985) 879-2731
10101 SOUTHWEST FREEWAY · SUITE 620 · HOUSTON, TEXAS 77071 · (713) 219-1470

DRAWN BY: DPC	SHEET: 15 OF 29
CHECKED BY:	NOT TO SCALE
APPROVED BY: WCC	DATE: 3/7/2016
REVISION BY:	JOB NO.: 12379-00
GIS FILE: 12379_SHEET_15_F_PROFILE.MXD	



SITE G
PROPOSED EARTHEN PLUG
 ±0.02 ACRES
 DEPTH: 6'
 N 29.3563
 W -90.8039

**PROPOSED DREDGING
 FOR EARTHEN PLUG**

NOTE: THIS MAP WAS PREPARED FOR TOPOGRAPHIC PURPOSES ONLY, AND IS NOT A PROPERTY BOUNDARY SURVEY AND AS SUCH DOES NOT COMPLY WITH THE MOST RECENT "STANDARDS OF PRACTICE FOR PROPERTY BOUNDARY SURVEYS" AS ADOPTED BY THE LOUISIANA PROFESSIONAL ENGINEERING AND LAND SURVEYING BOARD.



APPROXIMATELY 295± CUBIC YARDS OF WATER BOTTOM MATERIAL TO BE DREDGED FOR PLUG PLACEMENT.
 FOR A PROFILE THROUGH THE DREDGE AND PLUG AREA, SEE SHEET 17.

HARRY BOURG CORPORATION

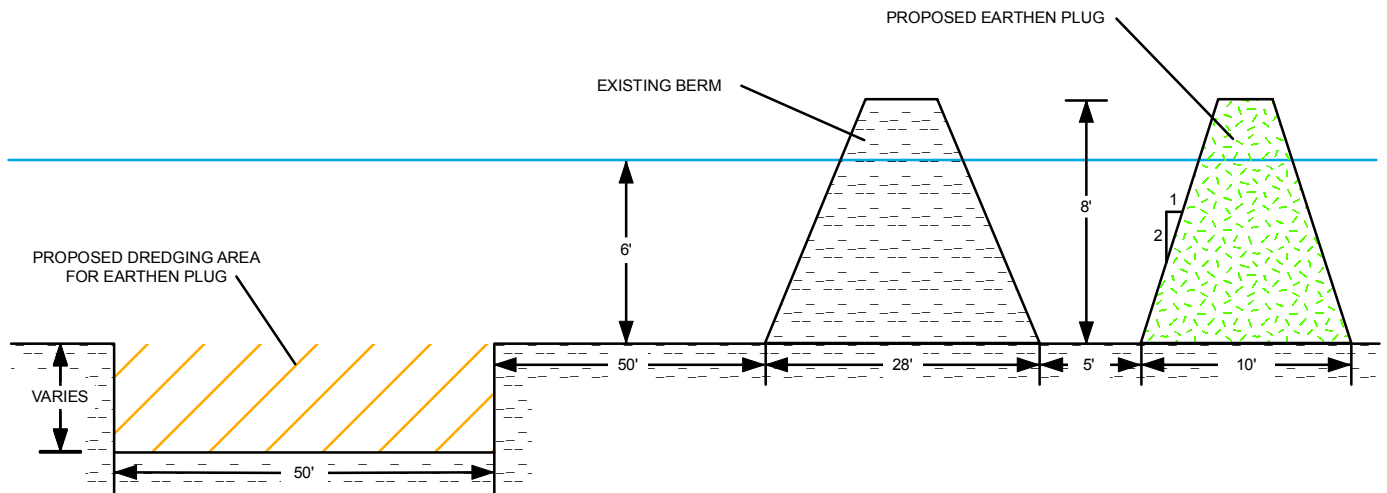
**PROPOSED DREDGE AND FILL
 LOCATED IN SECTION 12, T20S-R16E
 TERREBONNE PARISH, LOUISIANA**



SURVEYING · ENGINEERING · ENVIRONMENTAL SERVICES · FIELD SERVICES · GIS
 283 CORPORATE DRIVE · PO BOX 3106 · HOUMA, LOUISIANA 70361 · (985) 879-2731
 10101 SOUTHWEST FREEWAY · SUITE 620 · HOUSTON, TEXAS 77071 · (713) 219-1470

DRAWN BY: DPC	SHEET: 16 OF 29
CHECKED BY:	SCALE: AS SHOWN
APPROVED BY: WCC	DATE: 3/7/2016
REVISION BY:	JOB NO.: 12379-00
GIS FILE: 12379_SHEET_16_SITE_G.MXD	

G:\1237900\MAPS\PACKET\12379_SHEET_17_G_PROFILE.MXD



NOTE: THIS MAP WAS PREPARED FOR TOPOGRAPHIC PURPOSES ONLY, AND IS NOT A PROPERTY BOUNDARY SURVEY AND AS SUCH DOES NOT COMPLY WITH THE MOST RECENT "STANDARDS OF PRACTICE FOR PROPERTY BOUNDARY SURVEYS" AS ADOPTED BY THE LOUISIANA PROFESSIONAL ENGINEERING AND LAND SURVEYING BOARD.

FOR SITE G PLAN VIEW, SEE SHEET 16.

HARRY BOURG CORPORATION

PROPOSED DREDGE AND FILL SITE G PROFILE TERREBONNE PARISH, LOUISIANA



SURVEYING · ENGINEERING · ENVIRONMENTAL SERVICES · FIELD SERVICES · GIS
283 CORPORATE DRIVE · PO BOX 3106 · HOUMA, LOUISIANA 70361 · (985) 879-2731
10101 SOUTHWEST FREEWAY · SUITE 620 · HOUSTON, TEXAS 77071 · (713) 219-1470

DRAWN BY: DPC	SHEET: 17 OF 29
CHECKED BY:	NOT TO SCALE
APPROVED BY: WCC	DATE: 3/7/2016
REVISION BY:	JOB NO.: 12379-00
GIS FILE: 12379_SHEET_17_G_PROFILE.MXD	

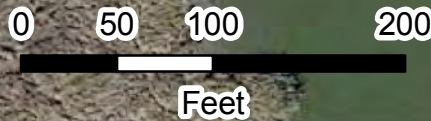


**PROPOSED DREDGING
FOR EARTHEN PLUG**

**SITE H
PROPOSED EARTHEN PLUG**
±0.29 ACRES
DEPTH: 2'
N 29.3467
W -90.7742



NOTE: THIS MAP WAS PREPARED FOR TOPOGRAPHIC PURPOSES ONLY AND IS NOT A PROPERTY BOUNDARY SURVEY AND AS SUCH DOES NOT COMPLY WITH THE MOST RECENT "STANDARDS OF PRACTICE FOR PROPERTY BOUNDARY SURVEYS" AS ADOPTED BY THE LOUISIANA PROFESSIONAL ENGINEERING AND LAND SURVEYING BOARD.



APPROXIMATELY 1221± CUBIC YARDS OF WATER BOTTOM MATERIAL TO BE DREDGED FOR PLUG PLACEMENT.

FOR A TYPICAL PROFILE THROUGH THE DREDGE AND PLUG AREA, SEE SHEET 27.

FOR A TYPICAL TRANSVERSE PROFILE THROUGH THE PLUG AREA, SEE SHEET 28.

HARRY BOURG CORPORATION

PROPOSED DREDGE AND FILL
LOCATED IN SECTION 12, T20S-R16E
TERREBONNE PARISH, LOUISIANA



SURVEYING · ENGINEERING · ENVIRONMENTAL SERVICES · FIELD SERVICES · GIS
283 CORPORATE DRIVE · PO BOX 3106 · HOUMA, LOUISIANA 70361 · (985) 879-2731
10101 SOUTHWEST FREEWAY · SUITE 620 · HOUSTON, TEXAS 77071 · (713) 219-1470

DRAWN BY: DPC	SHEET: 18 OF 29
CHECKED BY:	SCALE: AS SHOWN
APPROVED BY: WCC	DATE: 3/7/2016
REVISION BY:	JOB NO.: 12379-00
GIS FILE: 12379_SHEET_18_SITE_H.MXD	



**PROPOSED DREDGING
FOR EARTHEN PLUG**

**SITE I
PROPOSED EARTHEN PLUG**
±0.01 ACRES
DEPTH: 5'
N 29.3574
W -90.7509



NOTE: THIS MAP WAS PREPARED FOR TOPOGRAPHIC PURPOSES ONLY, AND IS NOT A PROPERTY BOUNDARY SURVEY AND AS SUCH DOES NOT COMPLY WITH THE MOST RECENT "STANDARDS OF PRACTICE FOR PROPERTY BOUNDARY SURVEYS" AS ADOPTED BY THE LOUISIANA PROFESSIONAL ENGINEERING AND LAND SURVEYING BOARD.



APPROXIMATELY 169± CUBIC YARDS OF WATER BOTTOM MATERIAL TO BE DREDGED FOR PLUG PLACEMENT.

FOR A TYPICAL PROFILE THROUGH THE DREDGE AND PLUG AREA, SEE SHEET 27.

FOR A TYPICAL TRANSVERSE PROFILE THROUGH THE PLUG AREA, SEE SHEET 28.

HARRY BOURG CORPORATION

PROPOSED DREDGE AND FILL
LOCATED IN SECTION 5, T20S-R17E
TERREBONNE PARISH, LOUISIANA



SURVEYING · ENGINEERING · ENVIRONMENTAL SERVICES · FIELD SERVICES · GIS
283 CORPORATE DRIVE · PO BOX 3106 · HOUMA, LOUISIANA 70361 · (985) 879-2731
10101 SOUTHWEST FREEWAY · SUITE 620 · HOUSTON, TEXAS 77071 · (713) 219-1470

DRAWN BY: DPC	SHEET: 19 OF 29
CHECKED BY:	SCALE: AS SHOWN
APPROVED BY: WCC	DATE: 3/7/2016
REVISION BY:	JOB NO.: 12379-00
GIS FILE: 12379_SHEET_19_SITE_I.MXD	



50'±

53'±

14'±

SITE J
PROPOSED EARTHEN PLUG
±0.02 ACRES
DEPTH: 8'
N 29.3546
W -90.7531

**PROPOSED DREDGING
FOR EARTHEN PLUG**

NOTE: THIS MAP WAS PREPARED FOR TOPOGRAPHIC PURPOSES ONLY, AND IS NOT A PROPERTY BOUNDARY SURVEY AND AS SUCH DOES NOT COMPLY WITH THE MOST RECENT "STANDARDS OF PRACTICE FOR PROPERTY BOUNDARY SURVEYS" AS ADOPTED BY THE LOUISIANA PROFESSIONAL ENGINEERING AND LAND SURVEYING BOARD.



APPROXIMATELY 220± CUBIC YARDS OF WATER BOTTOM MATERIAL TO BE DREDGED FOR PLUG PLACEMENT.

FOR A TYPICAL PROFILE THROUGH THE DREDGE AND PLUG AREA, SEE SHEET 27.

FOR A TYPICAL TRANSVERSE PROFILE THROUGH THE PLUG AREA, SEE SHEET 28.

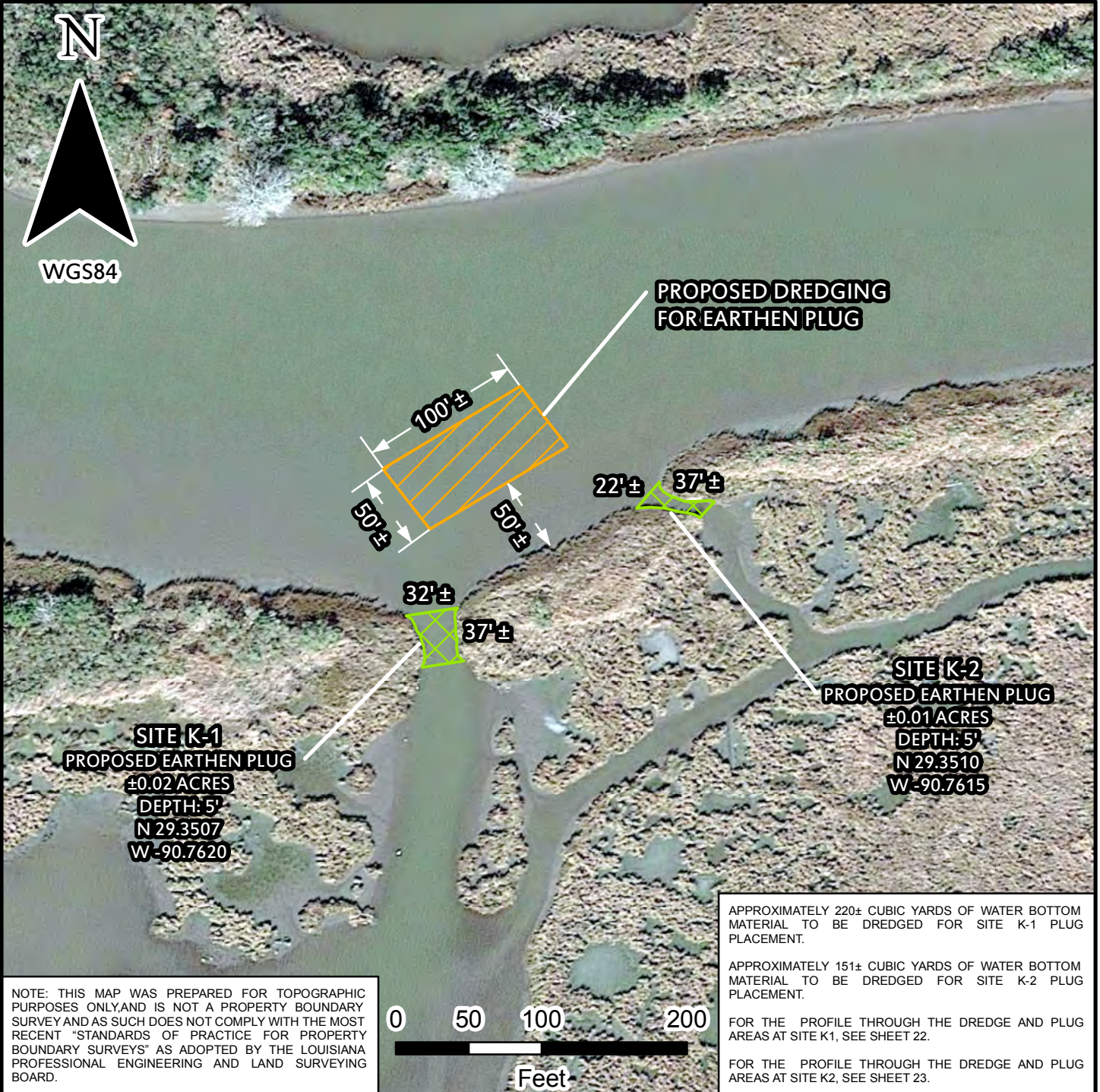
HARRY BOURG CORPORATION

PROPOSED DREDGE AND FILL
LOCATED IN SECTION 8, T20S-R17E
TERREBONNE PARISH, LOUISIANA



SURVEYING · ENGINEERING · ENVIRONMENTAL SERVICES · FIELD SERVICES · GIS
283 CORPORATE DRIVE · PO BOX 3106 · HOUMA, LOUISIANA 70361 · (985) 879-2731
10101 SOUTHWEST FREEWAY · SUITE 620 · HOUSTON, TEXAS 77071 · (713) 219-1470

DRAWN BY: DPC	SHEET: 20 OF 29
CHECKED BY:	SCALE: AS SHOWN
APPROVED BY: WCC	DATE: 3/7/2016
REVISION BY:	JOB NO.: 12379-00
GIS FILE: 12379_SHEET_20_SITE_J.MXD	



SITE K-1
PROPOSED EARTHEN PLUG
±0.02 ACRES
DEPTH: 5'
N 29.3507
W -90.7620

SITE K-2
PROPOSED EARTHEN PLUG
±0.01 ACRES
DEPTH: 5'
N 29.3510
W -90.7615

**PROPOSED DREDGING
FOR EARTHEN PLUG**

APPROXIMATELY 220± CUBIC YARDS OF WATER BOTTOM MATERIAL TO BE DREDGED FOR SITE K-1 PLUG PLACEMENT.

APPROXIMATELY 151± CUBIC YARDS OF WATER BOTTOM MATERIAL TO BE DREDGED FOR SITE K-2 PLUG PLACEMENT.

FOR THE PROFILE THROUGH THE DREDGE AND PLUG AREAS AT SITE K1, SEE SHEET 22.

FOR THE PROFILE THROUGH THE DREDGE AND PLUG AREAS AT SITE K2, SEE SHEET 23.

NOTE: THIS MAP WAS PREPARED FOR TOPOGRAPHIC PURPOSES ONLY, AND IS NOT A PROPERTY BOUNDARY SURVEY AND AS SUCH DOES NOT COMPLY WITH THE MOST RECENT "STANDARDS OF PRACTICE FOR PROPERTY BOUNDARY SURVEYS" AS ADOPTED BY THE LOUISIANA PROFESSIONAL ENGINEERING AND LAND SURVEYING BOARD.



HARRY BOURG CORPORATION

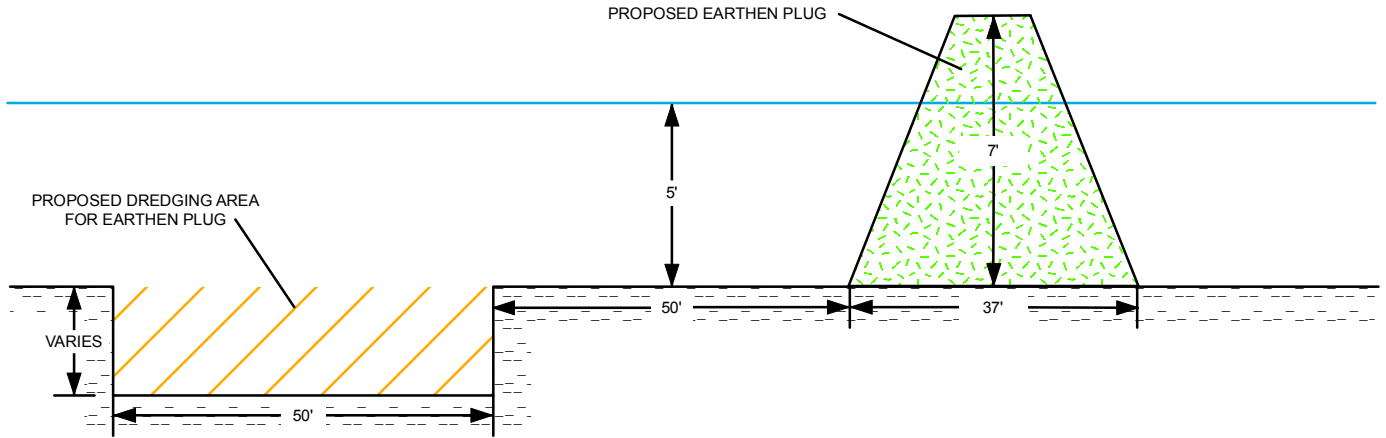
PROPOSED DREDGE AND FILL
LOCATED IN SECTION 7, T20S-R17E
TERREBONNE PARISH, LOUISIANA



SURVEYING · ENGINEERING · ENVIRONMENTAL SERVICES · FIELD SERVICES · GIS
283 CORPORATE DRIVE · PO BOX 3106 · HOUMA, LOUISIANA 70361 · (985) 879-2731
10101 SOUTHWEST FREEWAY · SUITE 620 · HOUSTON, TEXAS 77071 · (713) 219-1470

DRAWN BY: DPC	SHEET: 21 OF 29
CHECKED BY:	SCALE: AS SHOWN
APPROVED BY: WCC	DATE: 3/7/2016
REVISION BY:	JOB NO.: 12379-00
GIS FILE: 12379_SHEET_21_SITE_K.MXD	

G:\1237900\MAPS\PACKET\12379_SHEET_22_K1_PROFILE.MXD



NOTE: THIS MAP WAS PREPARED FOR TOPOGRAPHIC PURPOSES ONLY, AND IS NOT A PROPERTY BOUNDARY SURVEY AND AS SUCH DOES NOT COMPLY WITH THE MOST RECENT "STANDARDS OF PRACTICE FOR PROPERTY BOUNDARY SURVEYS" AS ADOPTED BY THE LOUISIANA PROFESSIONAL ENGINEERING AND LAND SURVEYING BOARD.

FOR SITE K1 PLAN VIEW, SEE SHEET 21.

HARRY BOURG CORPORATION

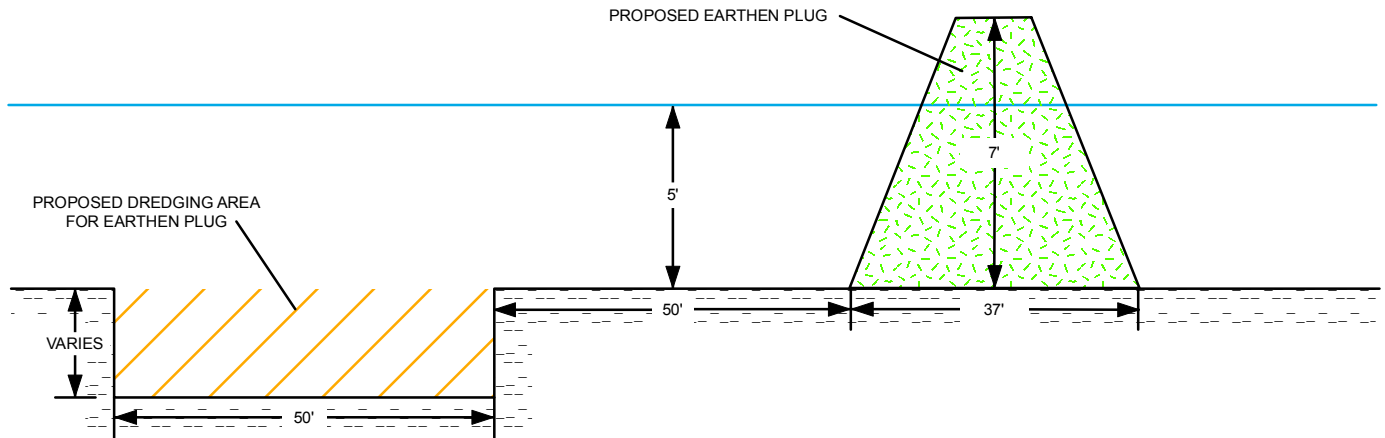
PROPOSED DREDGE AND FILL SITE K1 PROFILE TERREBONNE PARISH, LOUISIANA



SURVEYING · ENGINEERING · ENVIRONMENTAL SERVICES · FIELD SERVICES · GIS
283 CORPORATE DRIVE · PO BOX 3106 · HOUMA, LOUISIANA 70361 · (985) 879-2731
10101 SOUTHWEST FREEWAY · SUITE 620 · HOUSTON, TEXAS 77071 · (713) 219-1470

DRAWN BY: DPC	SHEET: 22 OF 29
CHECKED BY:	NOT TO SCALE
APPROVED BY: WCC	DATE: 3/7/2016
REVISION BY:	JOB NO.: 12379-00
GIS FILE: 12379_SHEET_22_K1_PROFILE.MXD	

G:\1237900\MAPS\PACKET\12379_SHEET_23_K2_PROFILE.MXD



NOTE: THIS MAP WAS PREPARED FOR TOPOGRAPHIC PURPOSES ONLY, AND IS NOT A PROPERTY BOUNDARY SURVEY AND AS SUCH DOES NOT COMPLY WITH THE MOST RECENT "STANDARDS OF PRACTICE FOR PROPERTY BOUNDARY SURVEYS" AS ADOPTED BY THE LOUISIANA PROFESSIONAL ENGINEERING AND LAND SURVEYING BOARD.

FOR SITE K2 PLAN VIEW, SEE SHEET 21.

HARRY BOURG CORPORATION

PROPOSED DREDGE AND FILL
SITE K2 PROFILE
TERREBONNE PARISH, LOUISIANA

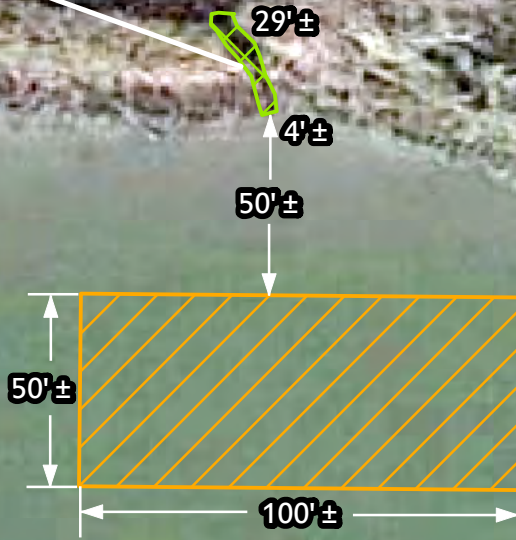


SURVEYING · ENGINEERING · ENVIRONMENTAL SERVICES · FIELD SERVICES · GIS
283 CORPORATE DRIVE · PO BOX 3106 · HOUMA, LOUISIANA 70361 · (985) 879-2731
10101 SOUTHWEST FREEWAY · SUITE 620 · HOUSTON, TEXAS 77071 · (713) 219-1470

DRAWN BY: DPC	SHEET: 23 OF 29
CHECKED BY:	NOT TO SCALE
APPROVED BY: WCC	DATE: 3/7/2016
REVISION BY:	JOB NO.: 12379-00
GIS FILE: 12379_SHEET_23_K2_PROFILE.MXD	



SITE L
PROPOSED EARTHEN PLUG
±0.003 ACRES
DEPTH: 2'
N 29.3457
W -90.7587



**PROPOSED DREDGING
FOR EARTHEN PLUG**

NOTE: THIS MAP WAS PREPARED FOR TOPOGRAPHIC PURPOSES ONLY, AND IS NOT A PROPERTY BOUNDARY SURVEY AND AS SUCH DOES NOT COMPLY WITH THE MOST RECENT "STANDARDS OF PRACTICE FOR PROPERTY BOUNDARY SURVEYS" AS ADOPTED BY THE LOUISIANA PROFESSIONAL ENGINEERING AND LAND SURVEYING BOARD.



APPROXIMATELY 9± CUBIC YARDS OF WATER BOTTOM MATERIAL TO BE DREDGED FOR PLUG PLACEMENT.
FOR THE PROFILE THROUGH THE DREDGE AND PLUG AREA, SEE SHEET 25.

HARRY BOURG CORPORATION

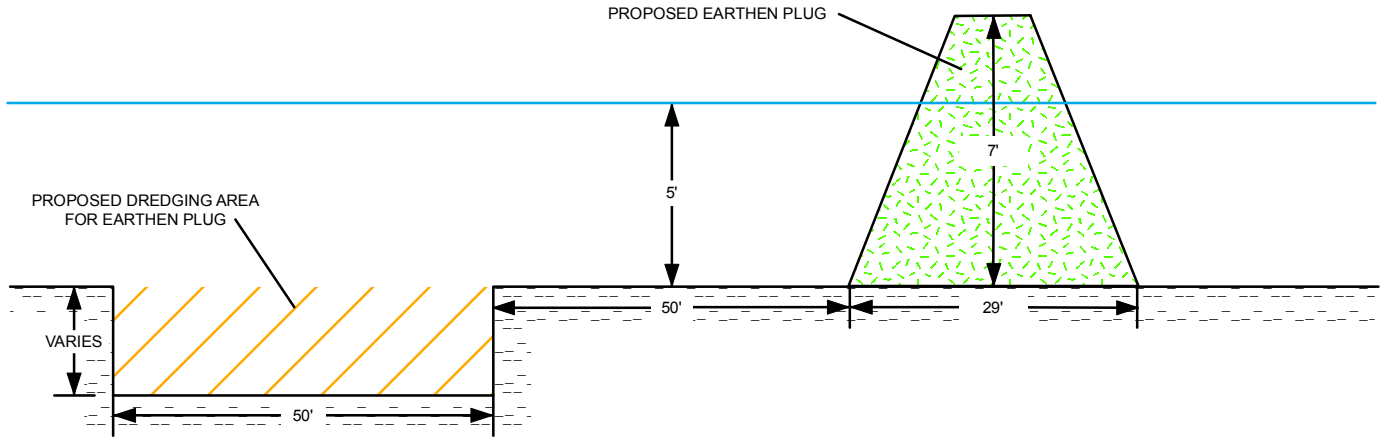
PROPOSED DREDGE AND FILL
LOCATED IN SECTION 7, T20S-R17E
TERREBONNE PARISH, LOUISIANA



SURVEYING · ENGINEERING · ENVIRONMENTAL SERVICES · FIELD SERVICES · GIS
283 CORPORATE DRIVE · PO BOX 3106 · HOUMA, LOUISIANA 70361 · (985) 879-2731
10101 SOUTHWEST FREEWAY · SUITE 620 · HOUSTON, TEXAS 77071 · (713) 219-1470

DRAWN BY: DPC	SHEET: 24 OF 29
CHECKED BY:	SCALE: AS SHOWN
APPROVED BY: WCC	DATE: 3/7/2016
REVISION BY:	JOB NO.: 12379-00
GIS FILE: 12379_SHEET_24_SITE_L.MXD	

G:\1237900\MAPS\PACKET\12379_SHEET_25_L_PROFILE.MXD



NOTE: THIS MAP WAS PREPARED FOR TOPOGRAPHIC PURPOSES ONLY, AND IS NOT A PROPERTY BOUNDARY SURVEY AND AS SUCH DOES NOT COMPLY WITH THE MOST RECENT "STANDARDS OF PRACTICE FOR PROPERTY BOUNDARY SURVEYS" AS ADOPTED BY THE LOUISIANA PROFESSIONAL ENGINEERING AND LAND SURVEYING BOARD.

FOR SITE L PLAN VIEW, SEE SHEET 24.

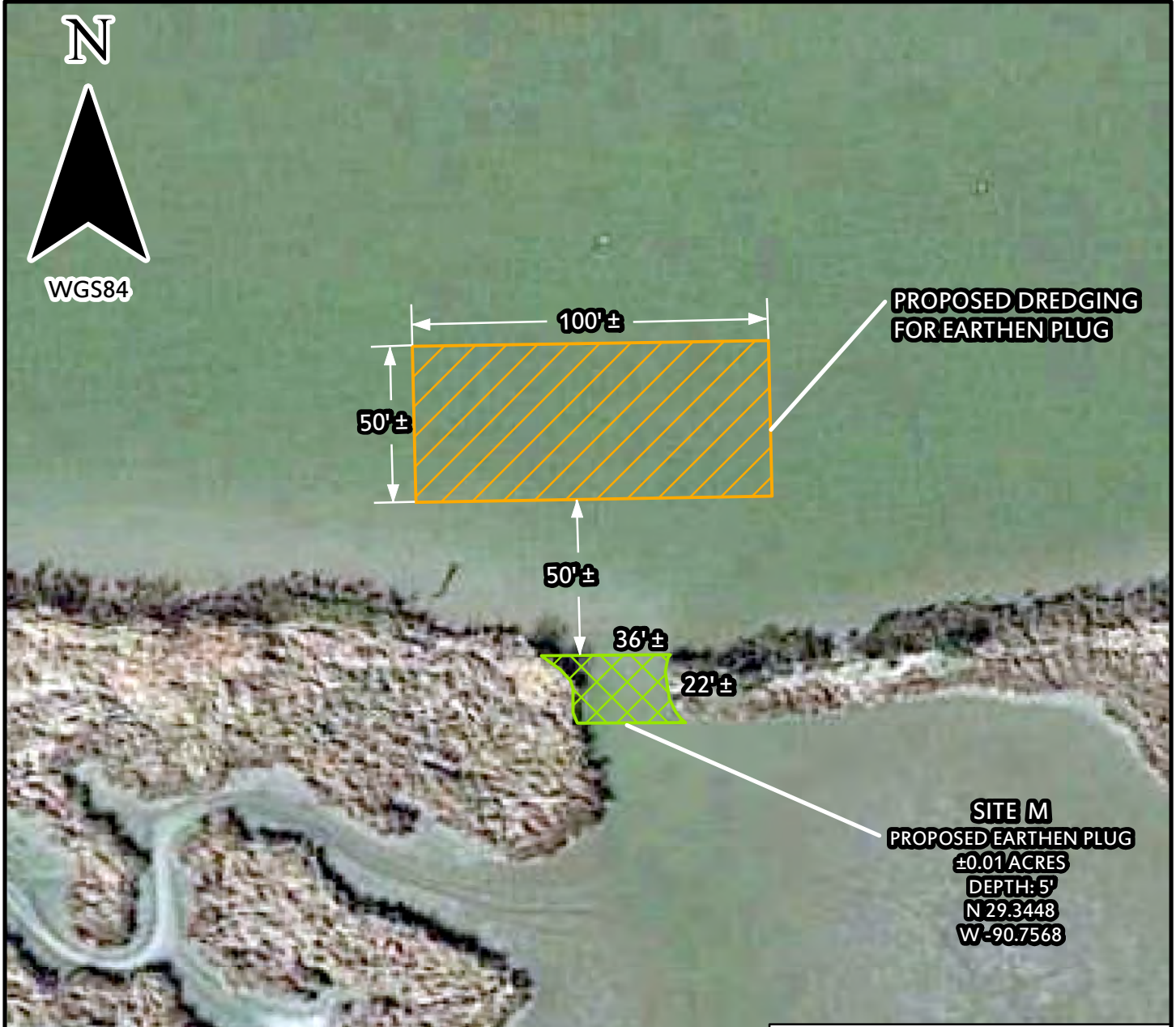
HARRY BOURG CORPORATION

PROPOSED DREDGE AND FILL SITE L PROFILE TERREBONNE PARISH, LOUISIANA



SURVEYING · ENGINEERING · ENVIRONMENTAL SERVICES · FIELD SERVICES · GIS
283 CORPORATE DRIVE · PO BOX 3106 · HOUMA, LOUISIANA 70361 · (985) 879-2731
10101 SOUTHWEST FREEWAY · SUITE 620 · HOUSTON, TEXAS 77071 · (713) 219-1470

DRAWN BY: DPC	SHEET: 25 OF 29
CHECKED BY:	NOT TO SCALE
APPROVED BY: WCC	DATE: 3/7/2016
REVISION BY:	JOB NO.: 12379-00
GIS FILE: 12379_SHEET_25_L_PROFILE.MXD	



PROPOSED DREDGING FOR EARTHEN PLUG

**SITE M
PROPOSED EARTHEN PLUG**
±0.01 ACRES
DEPTH: 5'
N 29.3448
W -90.7568

NOTE: THIS MAP WAS PREPARED FOR TOPOGRAPHIC PURPOSES ONLY, AND IS NOT A PROPERTY BOUNDARY SURVEY AND AS SUCH DOES NOT COMPLY WITH THE MOST RECENT "STANDARDS OF PRACTICE FOR PROPERTY BOUNDARY SURVEYS" AS ADOPTED BY THE LOUISIANA PROFESSIONAL ENGINEERING AND LAND SURVEYING BOARD.



APPROXIMATELY 147± CUBIC YARDS OF WATER BOTTOM MATERIAL TO BE DREDGED FOR PLUG PLACEMENT.
FOR THE PROFILE THROUGH THE DREDGE AND PLUG AREA, SEE SHEET 27.
FOR THE TRANSVERSE PROFILE THROUGH THE PLUG AREA, SEE SHEET 28.

HARRY BOURG CORPORATION

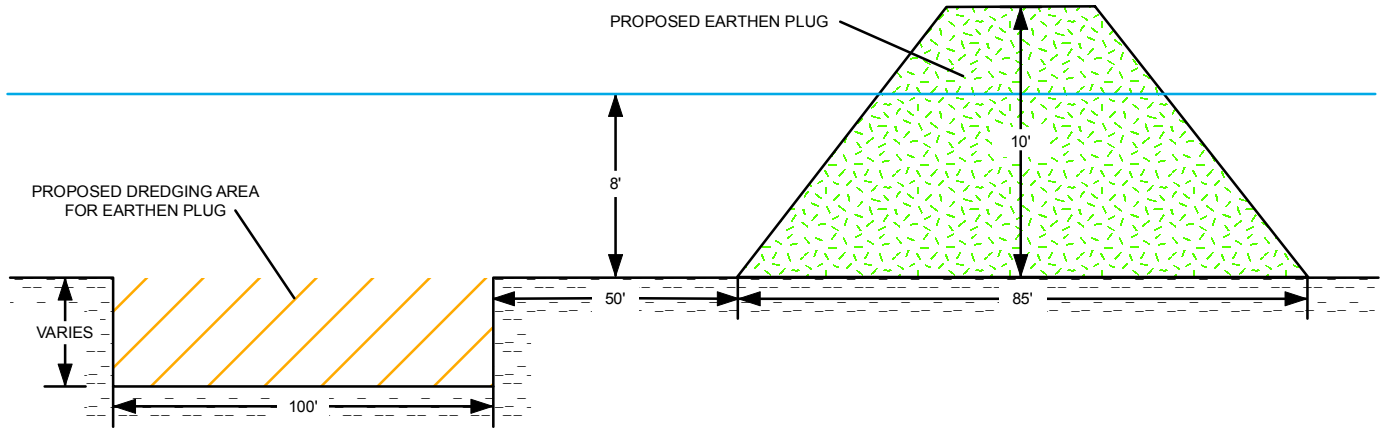
PROPOSED DREDGE AND FILL
LOCATED IN SECTION 7, T20S-R17E
TERREBONNE PARISH, LOUISIANA



SURVEYING · ENGINEERING · ENVIRONMENTAL SERVICES · FIELD SERVICES · GIS
283 CORPORATE DRIVE · PO BOX 3106 · HOUMA, LOUISIANA 70361 · (985) 879-2731
10101 SOUTHWEST FREEWAY · SUITE 620 · HOUSTON, TEXAS 77071 · (713) 219-1470

DRAWN BY: DPC	SHEET: 26 OF 29
CHECKED BY:	SCALE: AS SHOWN
APPROVED BY: WCC	DATE: 3/7/2016
REVISION BY:	JOB NO.: 12379-00
GIS FILE: 12379_SHEET_26_SITE_M.MXD	

G:\1237900\MAPS\PACKET\12379_SHEET_27_DEHIJM_PROFILE.MXD



NOTE: THIS MAP WAS PREPARED FOR TOPOGRAPHIC PURPOSES ONLY, AND IS NOT A PROPERTY BOUNDARY SURVEY AND AS SUCH DOES NOT COMPLY WITH THE MOST RECENT "STANDARDS OF PRACTICE FOR PROPERTY BOUNDARY SURVEYS" AS ADOPTED BY THE LOUISIANA PROFESSIONAL ENGINEERING AND LAND SURVEYING BOARD.

THIS GRAPHIC REPRESENTS A TYPICAL PROFILE OF DREDGE AND PLUG SITES D, E, H, I, J, AND M. MEASUREMENTS WILL VARY FROM SITE TO SITE AND MAY BE BASED ON WATER HEIGHT, AMOUNT OF SEDIMENT REQUIRED TO CREATE PLUG, ETC.

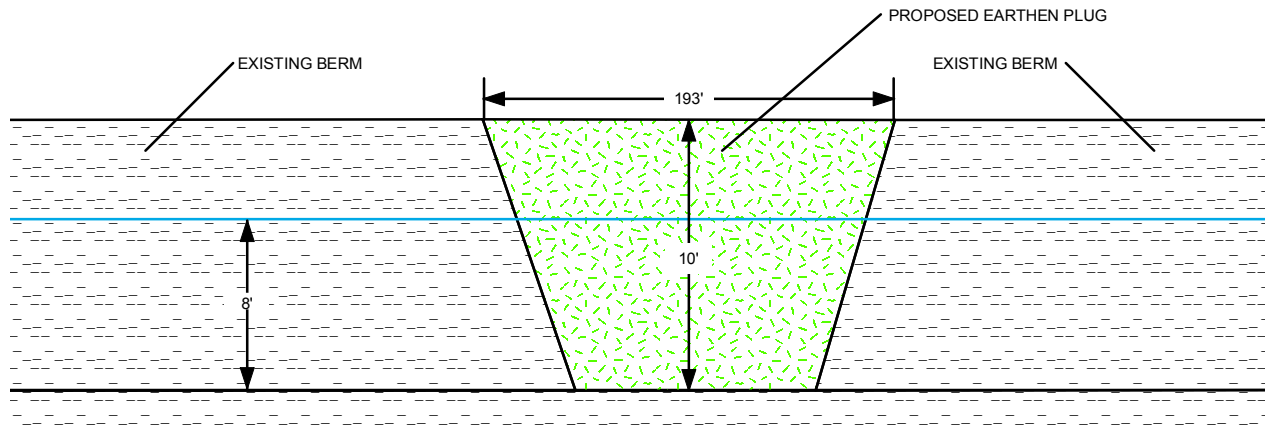
HARRY BOURG CORPORATION

PROPOSED DREDGE AND FILL TYPICAL PROFILE FOR SITES D, E, H, I, J AND M TERREBONNE PARISH, LOUISIANA



SURVEYING · ENGINEERING · ENVIRONMENTAL SERVICES · FIELD SERVICES · GIS
283 CORPORATE DRIVE · PO BOX 3106 · HOUMA, LOUISIANA 70361 · (985) 879-2731
10101 SOUTHWEST FREEWAY · SUITE 620 · HOUSTON, TEXAS 77071 · (713) 219-1470

DRAWN BY: DPC	SHEET: 27 OF 29
CHECKED BY:	NOT TO SCALE
APPROVED BY: WCC	DATE: 3/7/2016
REVISION BY:	JOB NO.: 12379-00
GIS FILE: 12379_SHEET_27_DEHIJM_PROFILE.MXD	



NOTE: THIS MAP WAS PREPARED FOR TOPOGRAPHIC PURPOSES ONLY, AND IS NOT A PROPERTY BOUNDARY SURVEY AND AS SUCH DOES NOT COMPLY WITH THE MOST RECENT "STANDARDS OF PRACTICE FOR PROPERTY BOUNDARY SURVEYS" AS ADOPTED BY THE LOUISIANA PROFESSIONAL ENGINEERING AND LAND SURVEYING BOARD.

THIS GRAPHIC REPRESENTS A TYPICAL TRANSVERSE PROFILE OF PLUG SITES D, E, H, I, J, AND M. MEASUREMENTS WILL VARY FROM SITE TO SITE AND MAY BE BASED ON WATER HEIGHT, AMOUNT OF SEDIMENT REQUIRED TO CREATE PLUG, ETC.

HARRY BOURG CORPORATION

PROPOSED DREDGE AND FILL TRANSVERSE PROFILE FOR SITES D, E, H, I, J, AND M TERREBONNE PARISH, LOUISIANA



SURVEYING · ENGINEERING · ENVIRONMENTAL SERVICES · FIELD SERVICES · GIS
283 CORPORATE DRIVE · PO BOX 3106 · HOUMA, LOUISIANA 70361 · (985) 879-2731
10101 SOUTHWEST FREEWAY · SUITE 620 · HOUSTON, TEXAS 77071 · (713) 219-1470

DRAWN BY: DPC	SHEET: 28 OF 29
CHECKED BY:	NOT TO SCALE
APPROVED BY: WCC	DATE: 4/12/2016
REVISION BY:	JOB NO.: 12379-00
GIS FILE: 12379_SHEET_28_DEHIJM_TRANS_PROFILE.MXD	

G:\1237900\MAPS\PACKET\12379_SHEET_28_DEHIJM_TRANS_PROFILE.MXD

NOTES:

1. APPROXIMATELY 46,070 CUBIC YARDS OF DREDGING WILL BE PERFORMED.
2. ALL PROPOSED WORK WILL BE PERFORMED WITHIN OPEN WATER AREAS.
3. NO WETLANDS WILL BE IMPACTED BY PROPOSED DREDGE ACTIVITIES.
4. ALL STRUCTURES, FACILITIES, WELL, AND PIPELINES/FLOWLINES OCCURRING IN OPEN WATER AREAS OR IN OILFIELD CANALS OR SLIPS SHALL BE REMOVED WITHIN 120 DAYS OF ABANDONMENT OF THE FACILITIES FOR THE HEREIN PERMITTED USE, UNLESS PRIOR WRITTEN APPROVAL TO LEAVE SUCH STRUCTURES IN PLACE IS RECEIVED FROM THE COASTAL MANAGEMENT DIVISION. THIS CONDITION DOES NOT PRECLUDE THE NECESSITY FOR REVISING THE CURRENT PERMIT OR OBTAINING A SEPARATE COASTAL USE PERMIT, SHOULD ONE BE REQUIRED, FOR SUCH REMOVAL ACTIVITIES.
5. AS-BUILT DRAWINGS SHALL BE SUBMITTED WITH 30 DAYS OF COMPLETION OF THIS PROJECT TO THE LOUISIANA DEPARTMENT OF NATURAL RESOURCES, COASTAL MANAGEMENT DIVISION, P.O. BOX 44487, BATON ROUGE, LA. 70804-4487.
6. STRUCTURES WILL BE MARKED/LIGHTED IN ACCORDANCE WITH U.S. COAST GUARD REGULATIONS.
7. IN ORDER TO ENSURE THE SAFETY OF ALL PARTIES, THE PERMITTEE SHALL CONTACT THE LOUISIANA ONE-CALL SYSTEM (1-800-272-3020) A MINIMUM OF 48 HOURS PRIOR TO THE COMMENCEMENT OF ANY EXCAVATION (DIGGING, DREDGING, JETTING, ETC.) OR DEMOLITION ACTIVITY.
8. IN ORDER TO AVOID IMPACTS TO NEARBY WETLAND, ALL WORK WILL BE PERFORMED OFF A BARGE THAT WILL BE LOCATED IN ADJACENT WATERWAYS.
9. BUCKET DREDGE WILL OPERATE OFF OF THE WORK BARGE LOCATED IN THE ADJACENT WATERWAYS.
10. EARTHEN PLUGS WILL BE PLANTED WITH NATIVE VEGETATION IN ORDER TO PREVENT SEDIMENT RUNOFF AND EROSION.
11. DREDGE MATERIAL WILL BE PLACED AT APPROXIMATELY THE SAME ELEVATION AS THE ADJACENT SPOIL BANK.

HARRY BOURG CORPORATION

**NOTES
TERREBONNE PARISH, LOUISIANA**



SURVEYING · ENGINEERING · ENVIRONMENTAL SERVICES · FIELD SERVICES · GIS
283 CORPORATE DRIVE · PO BOX 3106 · HOUMA, LOUISIANA 70361 · (985) 879-2731
10101 SOUTHWEST FREEWAY · SUITE 620 · HOUSTON, TEXAS 77071 · (713) 219-1470

DRAWN BY: DPC	SHEET: 29 OF 29
CHECKED BY:	NOT TO SCALE
APPROVED BY: WCC	DATE: 3/7/2016
REVISION BY:	JOB NO.: 12379-00
GIS FILE: 12379_SHEET_29_NOTES.MXD	

G:\1237900\MAPS\PACKET\12379_SHEET_29_NOTES.MXD