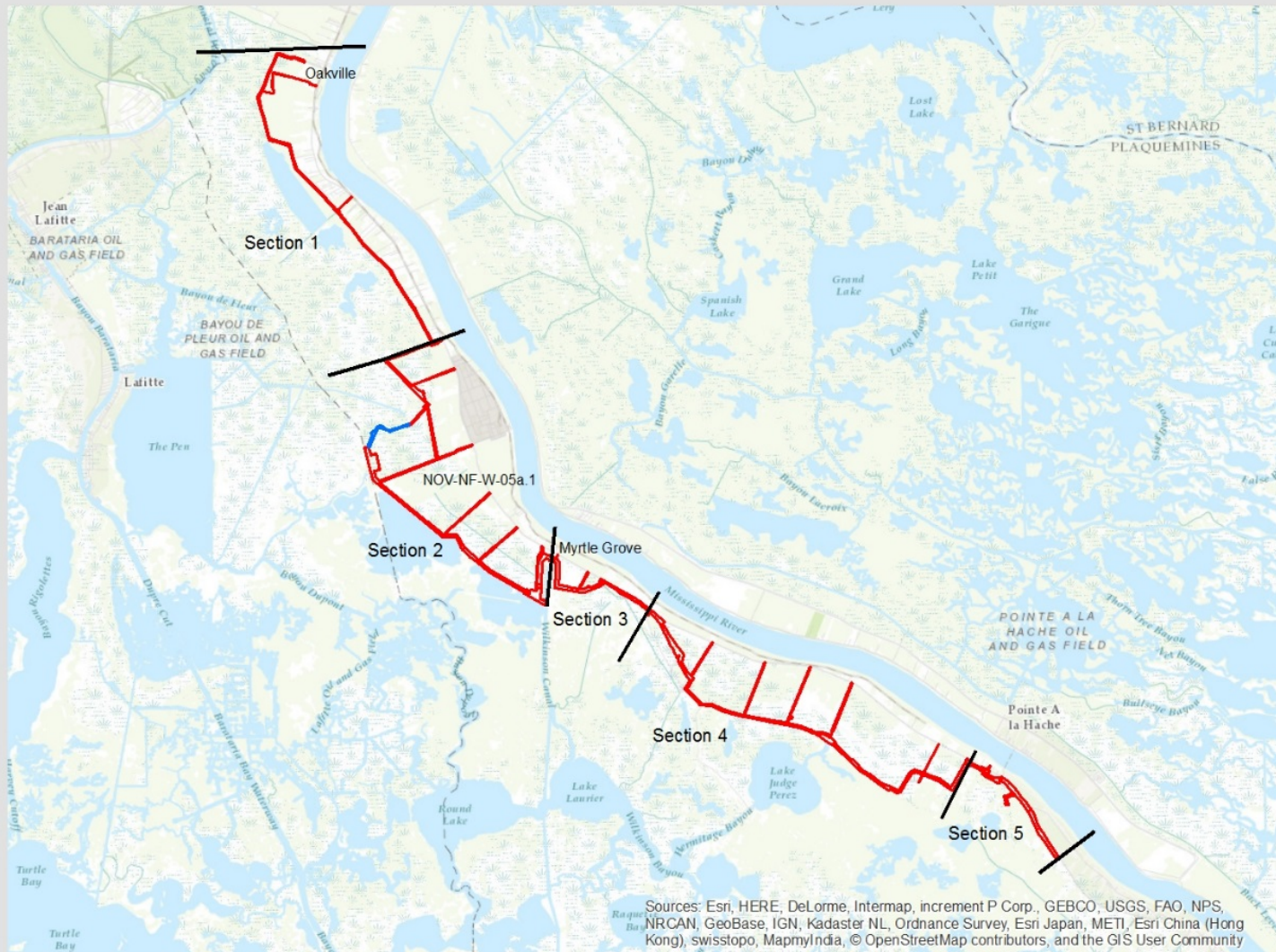


## **APPENDIX A: FIGURES**

---

---

# Figure A-1 Non-Federal Levees



Sources: Esri, HERE, DeLorme, Intermap, increment P Corp., GEBCO, USGS, FAO, NPS, NRCAN, GeoBase, IGN, Kadaster NL, Ordnance Survey, Esri Japan, METI, Esri China (Hong Kong), swisstopo, MapmyIndia, © OpenStreetMap contributors, and the GIS User Community

## Non-Federal Levee Project Area Sections 1 - 5 and NOV-NF-W-05a.1 New ROW

- NFL Section
- NOV-NF-05a.1 New ROW
- NFL Project Area

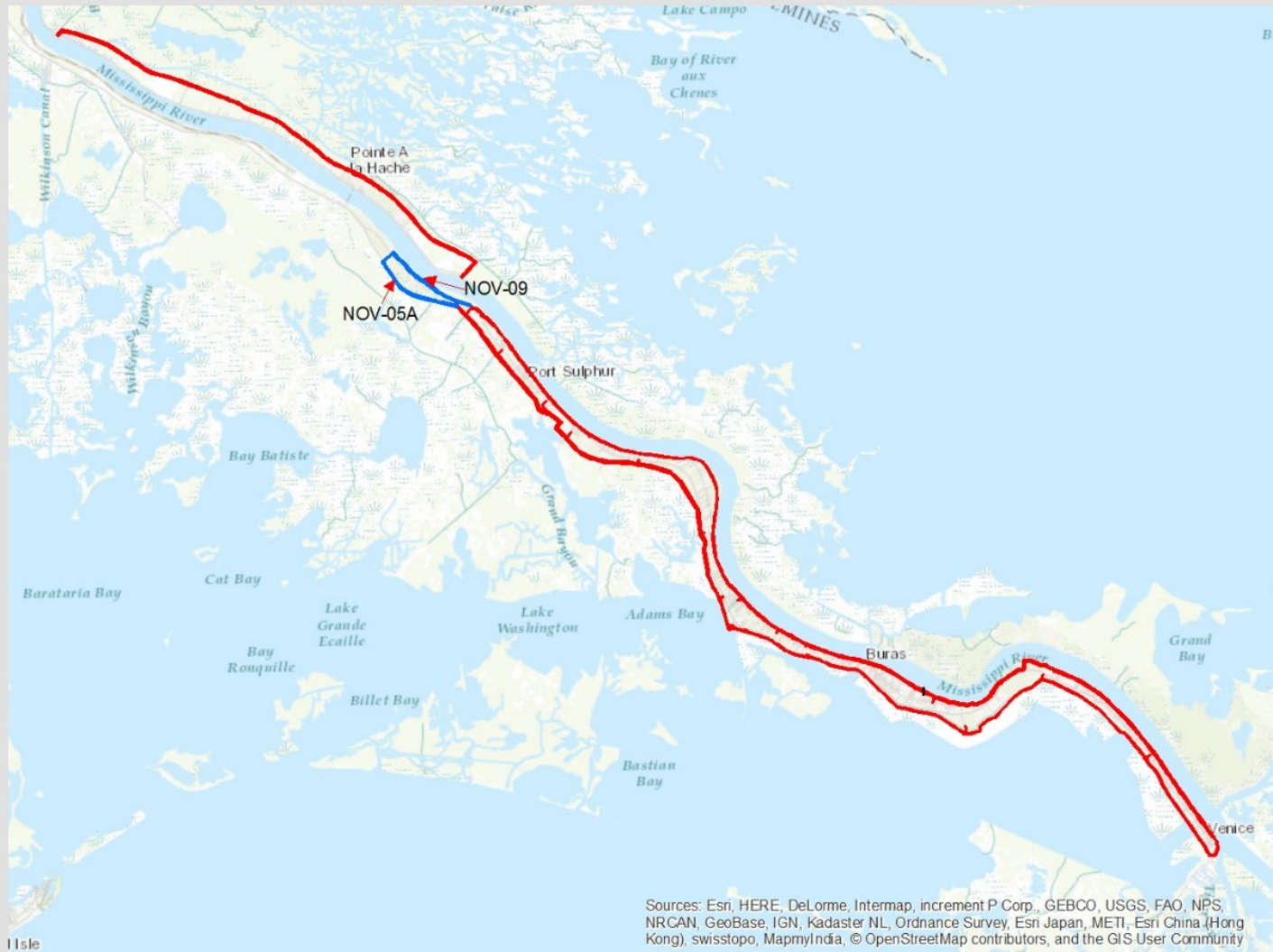


Barataria Basin





# Figure A-2 New Orleans to Venice Levee Project Area and NOV-05A and NOV-09 Updated ROW



## New Orleans to Venice Levee Project Area and NOV-05A and NOV-09 Updated ROW

- NOV Project Area
- NOV-05A and NOV-09 Updated ROW



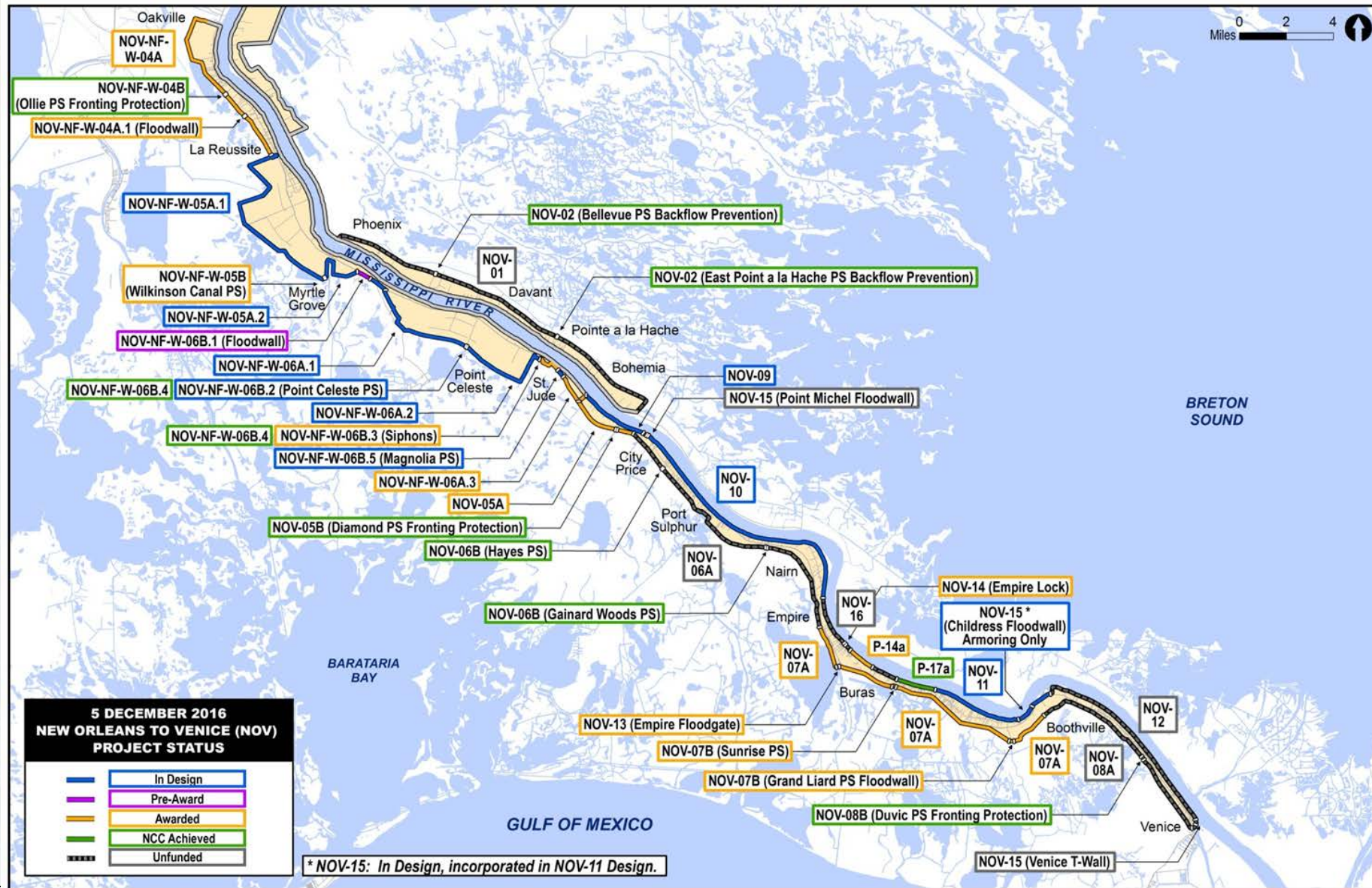
Sources: Esri, HERE, DeLorme, Intermap, increment P Corp., GEBCO, USGS, FAO, NPS, NRCAN, GeoBase, IGN, Kadaster NL, Ordnance Survey, Esri Japan, METI, Esri China (Hong Kong), swisstopo, MapmyIndia, © OpenStreetMap contributors, and the GIS User Community

0 5 10 Miles





# Figure A-3 Construction Status NOV/NFL





# Figure A-4 NOV-05a and NOV-09 Additional Right of Way



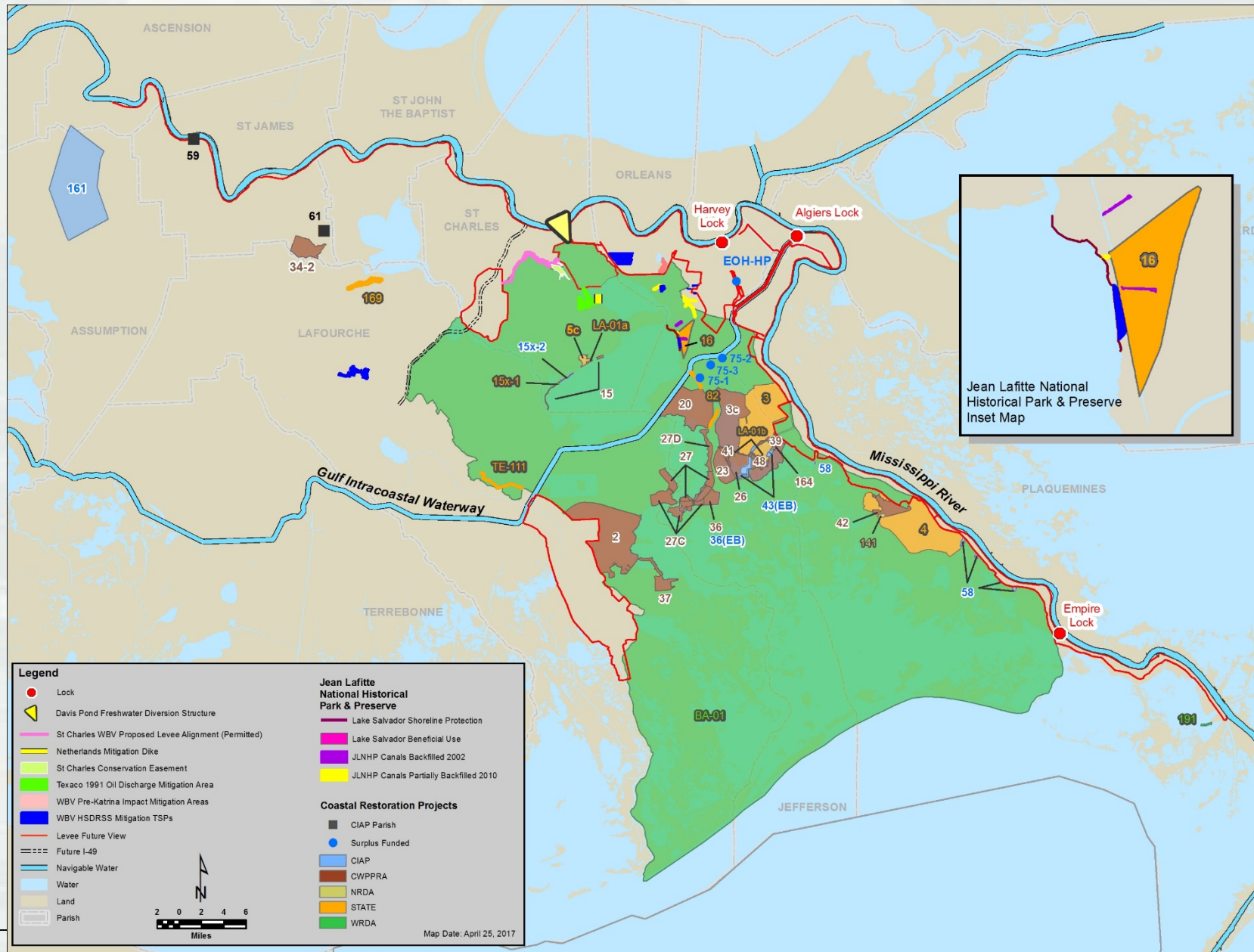


# Figure A-5 NOV-NF-W-05a.1 Area Outside Original Project Limits





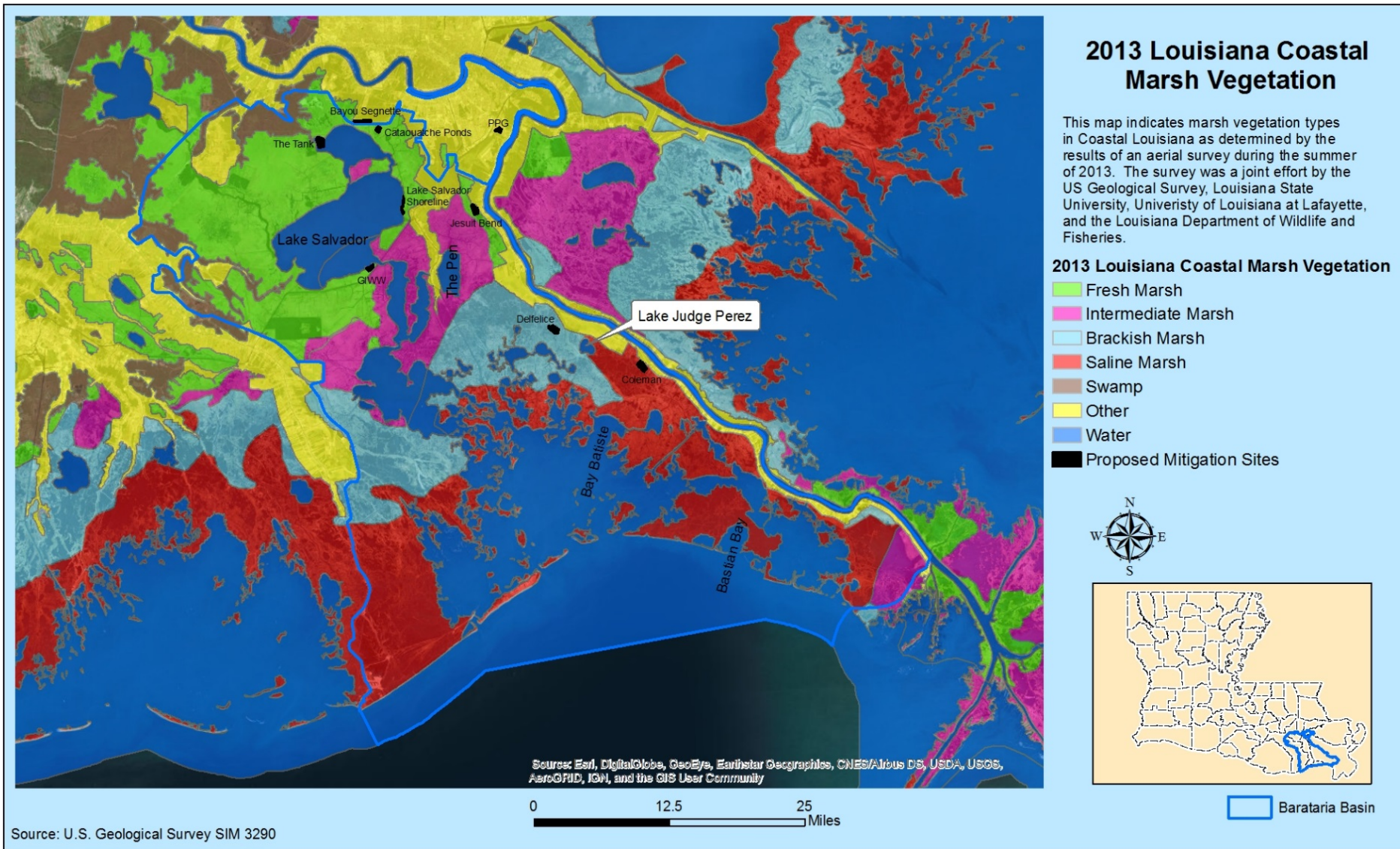
# Figure A-6 No Action Existing Conditions Future Without Project



**BUILDING STRONG®**

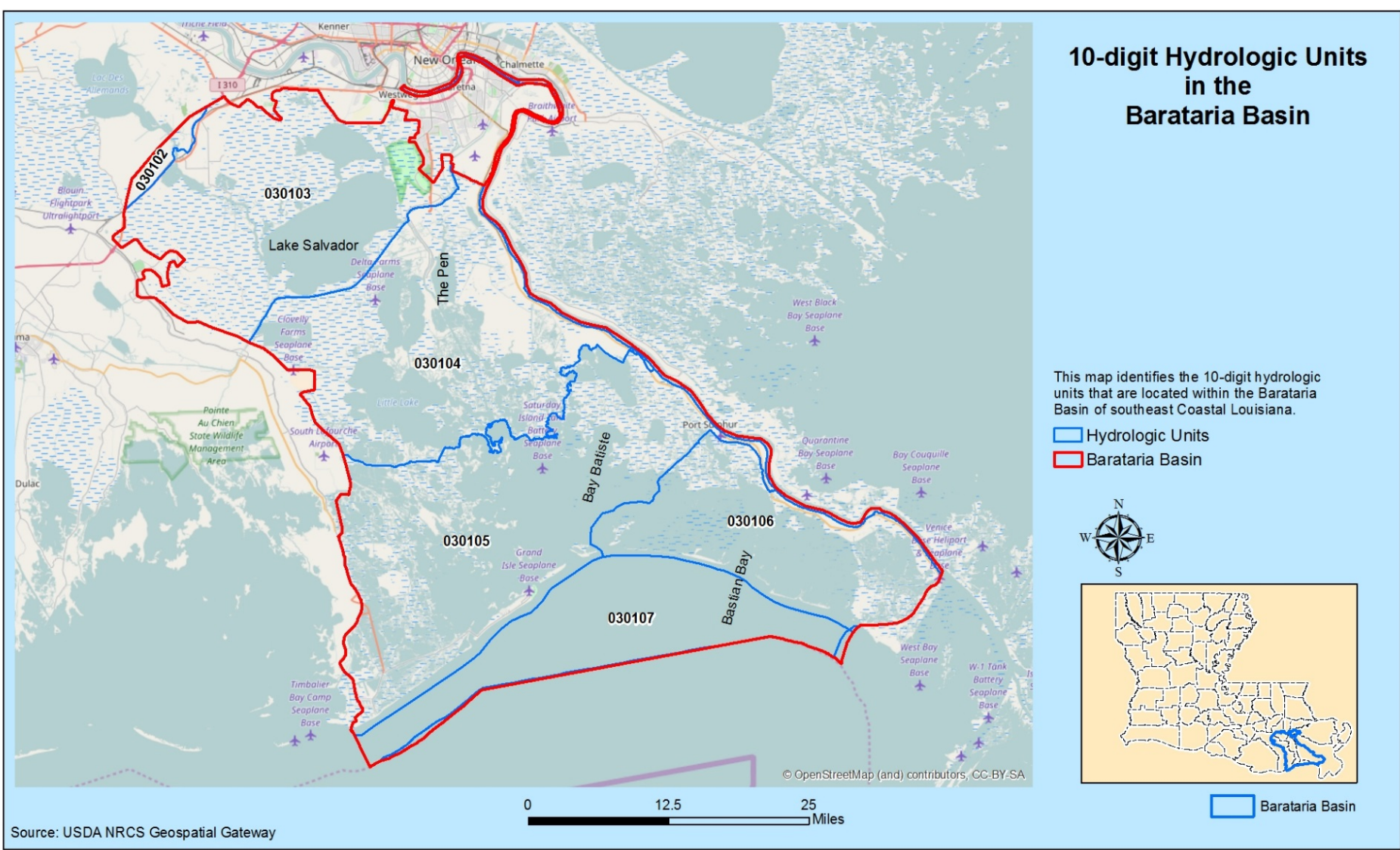


# Figure A-7 Vegetative Habitats in Barataria Basin



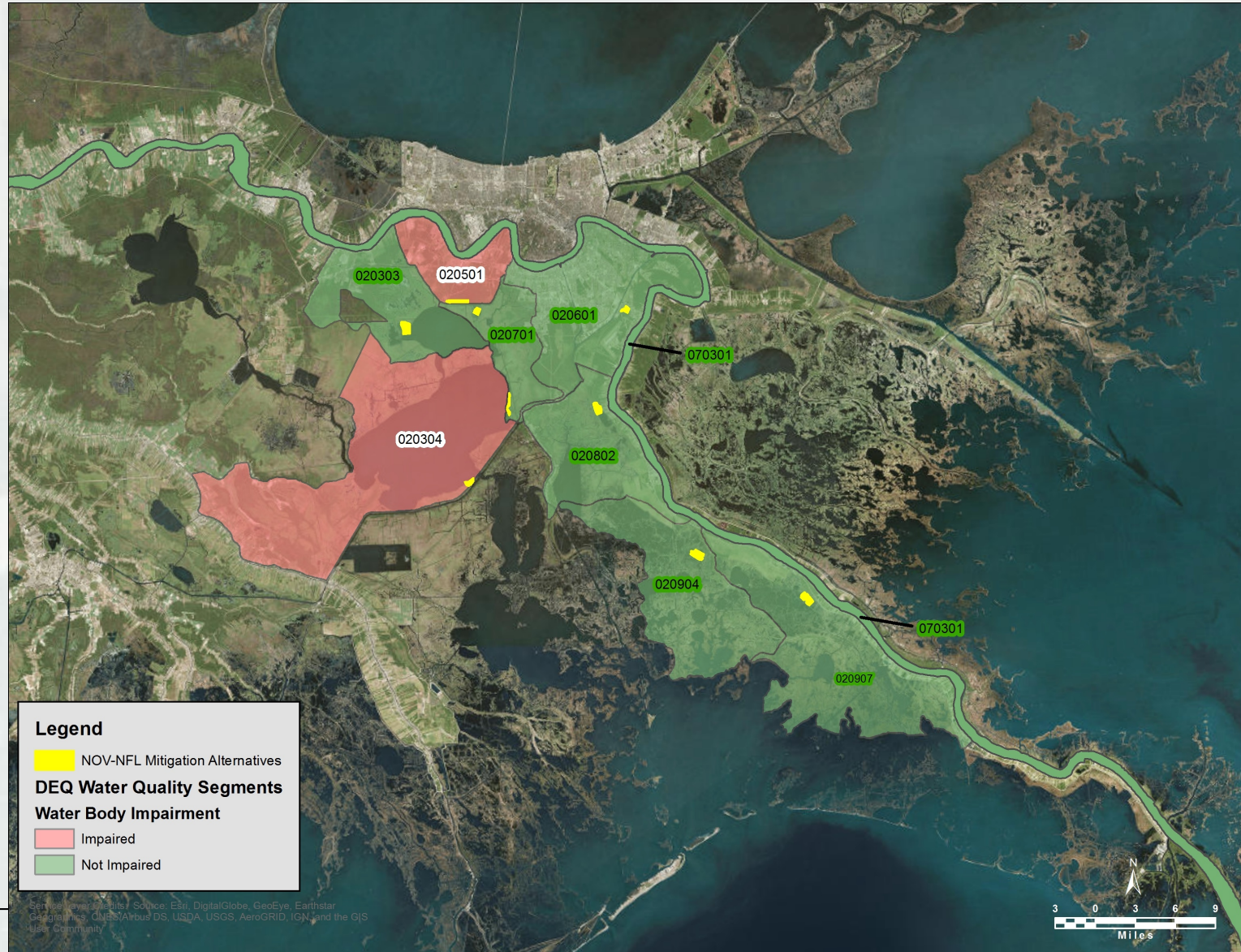


# Figure A-8 Hydrologic Units that Encompass Barataria Basin





# Figure A-9 Hydrologic Units that Encompass Both a Project Footprint and an "Impaired" Waterbody























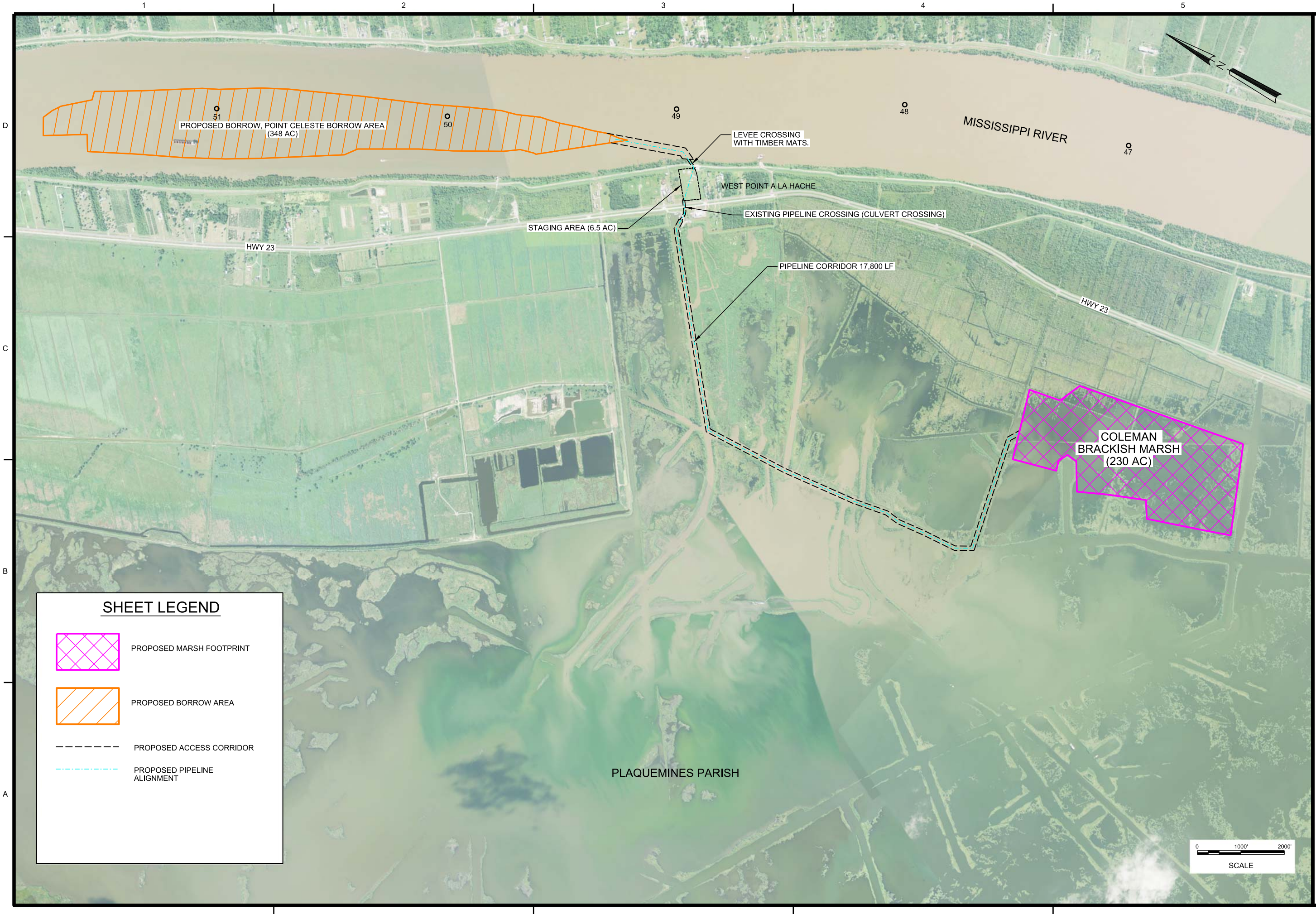












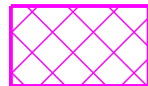

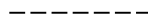

MARK	DESCRIPTION	DATE	APPR	MARK	DESCRIPTION	DATE	APPR

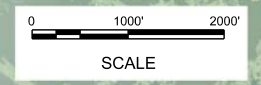
DESIGNED BY: P.R.G.	DESIGNED BY: K.J.C.	DATE:	SOLICITATION NO.:
PREPARED BY: P.R.G.	PREPARED BY: K.J.C.	CONTRACT NO.:	FILE NUMBER:
SUBMITTED BY: P.R.G.	SUBMITTED BY: K.J.C.	DATE:	FILE NAME:
SCALE:	DATE:	SIZE:	ANSI:
1"=1000'	04-17-2017	11x17	

NEW ORLEANS TO VENICE (NOV)  
MITIGATION PROJECT,  
EAR ALTERNATIVES  
COLEMAN BRACKISH MARSH  
OVERALL PLAN

SHEET IDENTIFICATION  
**C-05**

**SHEET LEGEND**

-  PROPOSED MARSH FOOTPRINT
-  PROPOSED BORROW AREA
-  PROPOSED ACCESS CORRIDOR
-  PROPOSED PIPELINE ALIGNMENT















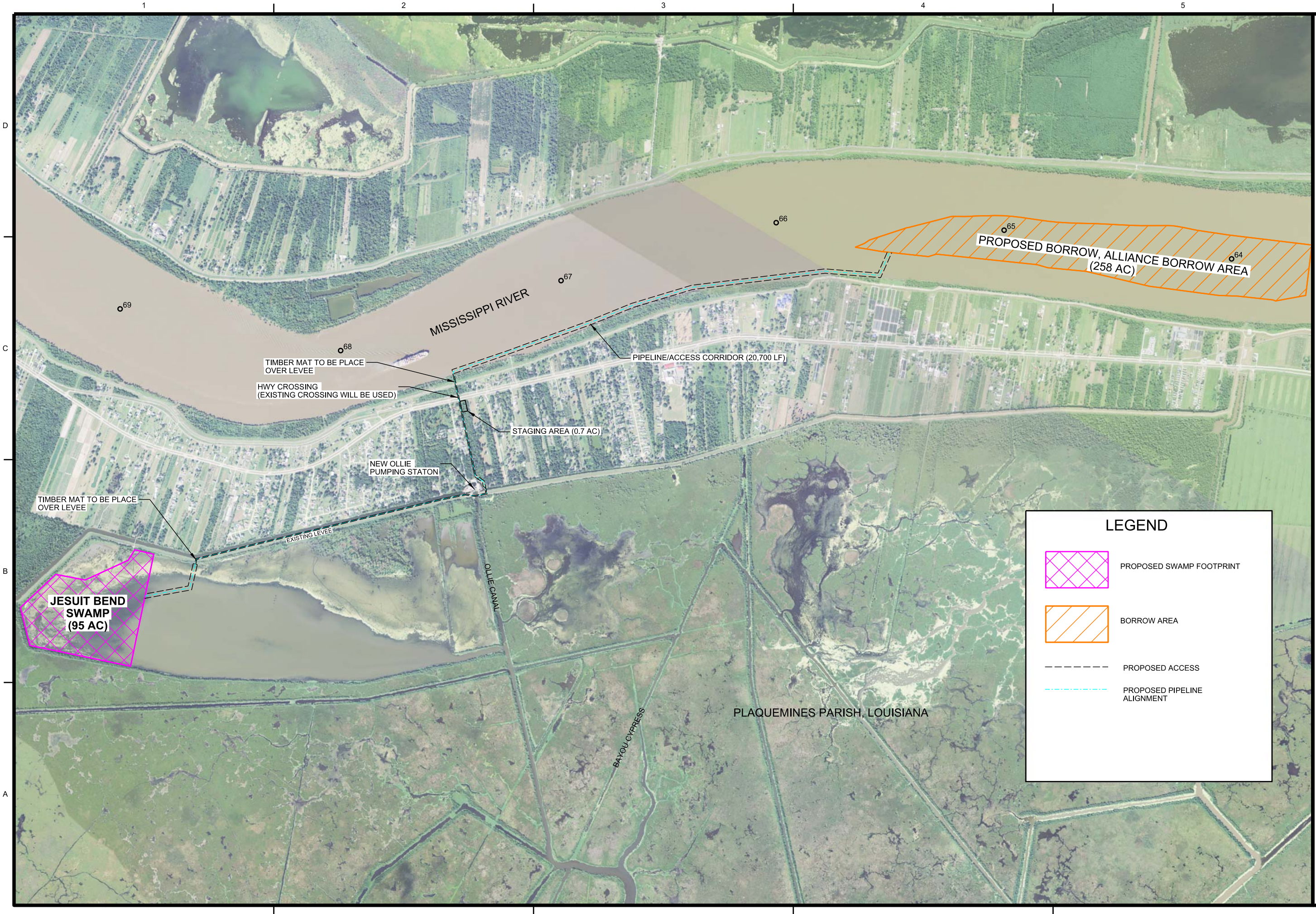












### LEGEND

- PROPOSED SWAMP FOOTPRINT
- BORROW AREA
- PROPOSED ACCESS
- PROPOSED PIPELINE ALIGNMENT

DATE	DESCRIPTION	APPR. MARK	DATE	APPR. MARK

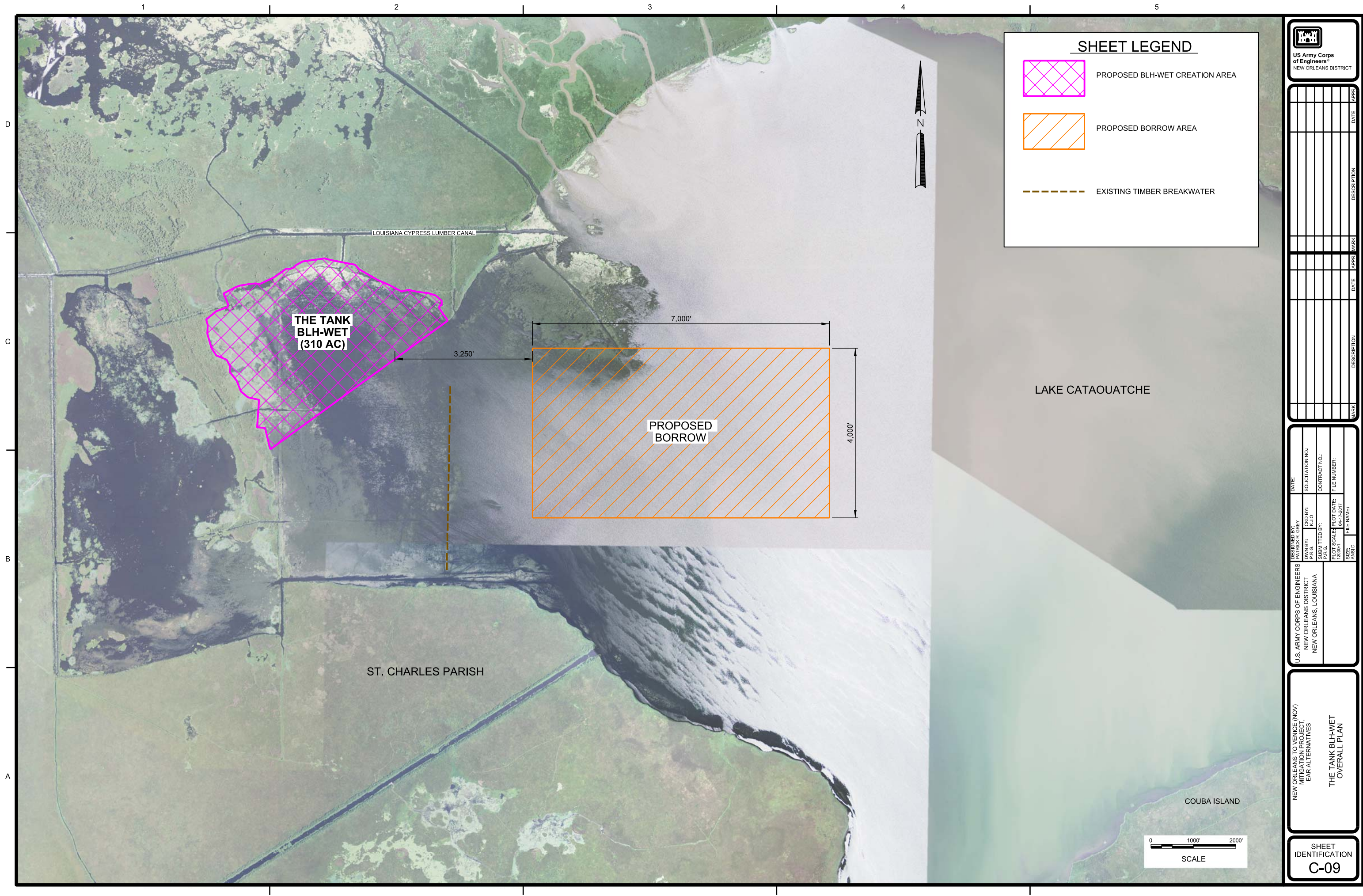
DESIGNED BY: DRAWN BY: P.R.G. BY:	DATE: SOLICITATION NO.: CONTRACT NO.:	SUBMITTED BY: PLOT DATE:	FILE NUMBER: FILE NAME:
U.S. ARMY CORPS OF ENGINEERS NEW ORLEANS DISTRICT NEW ORLEANS, LOUISIANA	12/00/11 04-17-2017	12/00/11 04-17-2017	12/00/11 04-17-2017

NEW ORLEANS TO VENICE (NOV)  
 MITIGATION PROJECT,  
 EAR ALTERNATIVES  
 JESUIT BEND SWAMP  
 OVERALL PLAN









### SHEET LEGEND

- PROPOSED BLH-WET CREATION AREA
- PROPOSED BORROW AREA
- EXISTING TIMBER BREAKWATER

MARK	DESCRIPTION	DATE	APPR.	MARK	DATE	APPR.

DESIGNED BY: P.R.G.	CHECKED BY: K.J.O.	DATE:	SOLICITATION NO.:
DRAWN BY: P.R.G.	APPROVED BY: K.J.O.		CONTRACT NO.:
			FILE NUMBER:

U.S. ARMY CORPS OF ENGINEERS  
NEW ORLEANS DISTRICT  
NEW ORLEANS, LOUISIANA

NEW ORLEANS TO VENICE (NOV)  
MITIGATION PROJECT,  
EAR ALTERNATIVES

THE TANK BLH-WET  
OVERALL PLAN

SHEET  
IDENTIFICATION  
**C-09**











