

St. James Parish West Shore Lake Pontchartrain Hurricane and Storm Damage Risk Reduction Feasibility Study

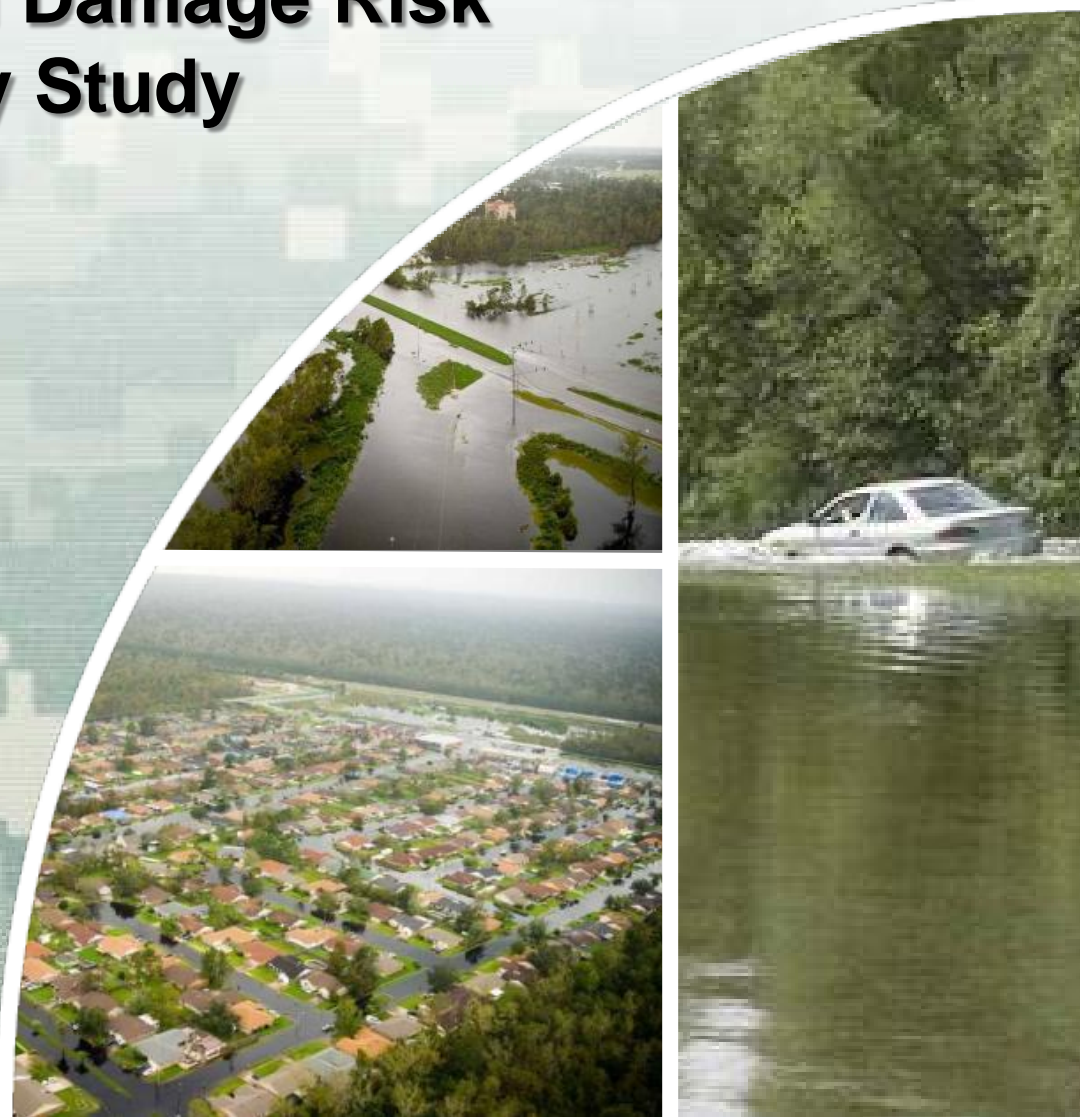
Public Meeting

U.S. Army Corps of Engineers
New Orleans District

September 10, 2013



US Army Corps of Engineers
BUILDING STRONG[®]



Agenda

- **Why We Are Here**
- **Project Overview/Schedule**
- **National Environmental Policy Act**
- **Public Comments**



Commitment to the Area



- **National, State and Local Commitment**

- **Public Engagement**



Where We Are Today

1. **Assess Proposed Alternatives**
2. **Identify Draft Plan**
3. **Agency and Public Review**
4. **Evaluate Comments Received**
5. **Formal Selection of a Selected Plan**



Public/Agency Review



- 45-day review period
- Began August 23rd and will conclude on October 8th
- Comments
 - Agency & Public input informs decision
 - All are fully evaluated prior to decision
 - Ensures decisions are based on best available information



Schedule

45-Day Public/Agency Review	Aug. 23 - Oct. 8 2013
Commander's Decision On Tentatively Selected Plan	November 2013
Feasibility Design of Tentatively Selected Plan	Dec 2013 – April 2014
30-Day State and Agency Review of Final Report (2nd Public Review)	May 2014
Study Completed- Chief's Report Signed	September 2014

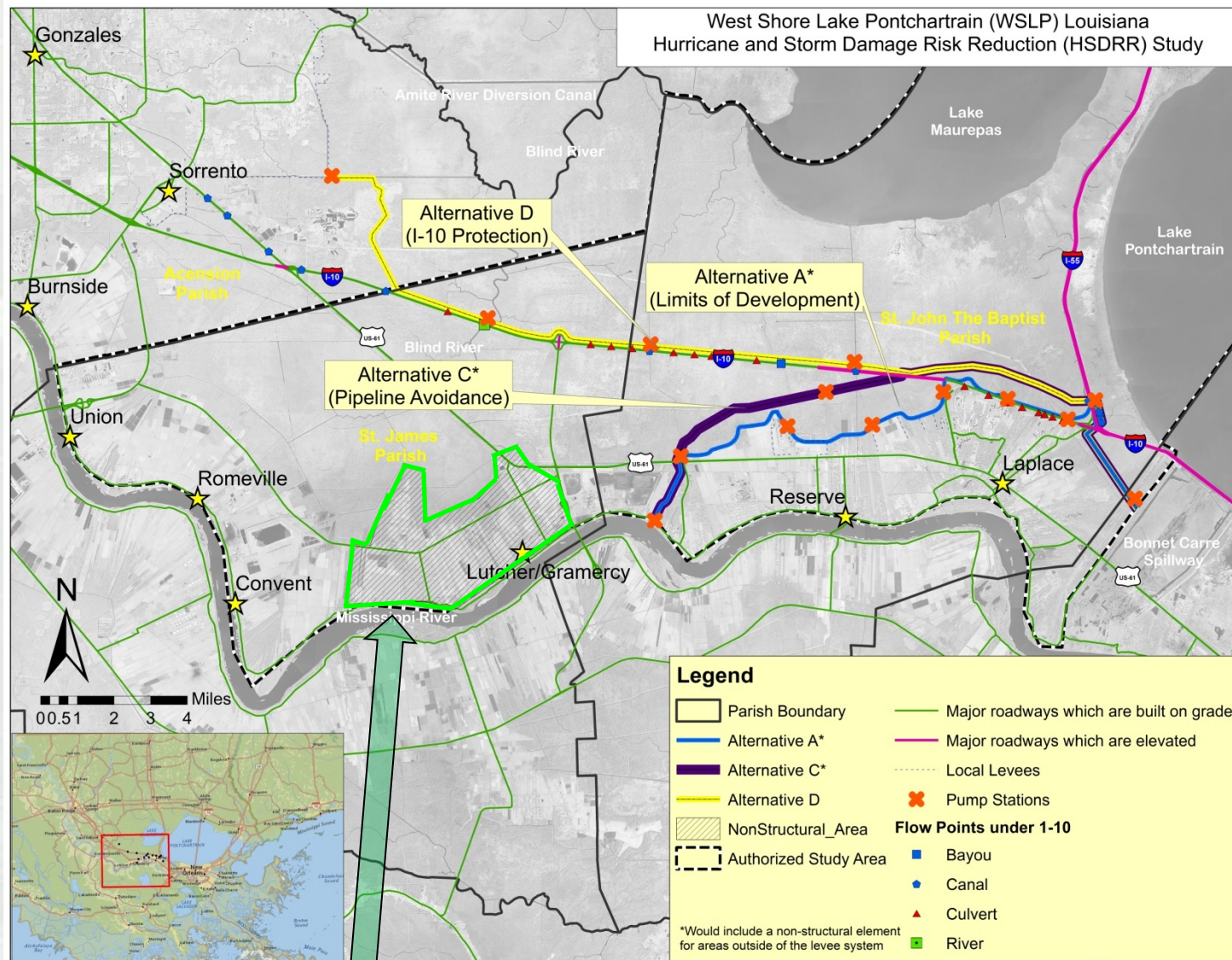


West Shore Lake Pontchartrain, Louisiana Hurricane and Storm Damage Risk Reduction Feasibility Study

Jeff Varisco
Project Manager
U.S. Army Corps of Engineers



Alternative Plans



Highlighted area in St. James depicts nonstructural measures



Comparing and Screening Plans

Alternative A:

- Impacts drainage and 70 pipeline crossings
- Requires 8 pump stations
- Higher O&M
- Immediate inundation of developed areas if levee is overtopped

Alternative C:

- 36 pipeline relocations
- Requires 4 pump stations
- Less residual risk and greater adaptability than Alternative A

***Draft TSP ***

Alternative D:

- Includes 14 pipeline crossings
- Requires 6 pump stations
- Uncertainties in maintaining hydrology
- Environmental impacts to LCA Convent/Blind River project and Maurepas Wildlife Management Area
- Higher annual costs to maintain

Alternative 100-year Level of Risk Reduction	Costs to Implement (\$ millions)	Equivalent Annual Benefits (\$ millions)	Annual Costs (\$ millions)	Benefit-to- Cost Ratio	Annual Net Benefits (\$ millions)
A	887.7	59.9	40.5	1.48	19.4
C	880.9	59.9	36.8	1.63	23.0
D	891.1	59.9	46.7	1.28	13.2

Why Alternative C?

- Economic Decision
 - ▶ C has a benefit to cost ratio of 1.65:1 vs. D which has a ratio of 1.28:1
 - ▶ The difference in the ratios are based on the implementation costs, and on the cost to maintain the alternative over time
 - ▶ D cost nearly \$10M more per year to operate than C (roughly \$500M over the 50 year period of analysis)
 - ▶ The additional cost to operate pump stations, water control structures and a longer levee lowers the benefit to cost ratio of D

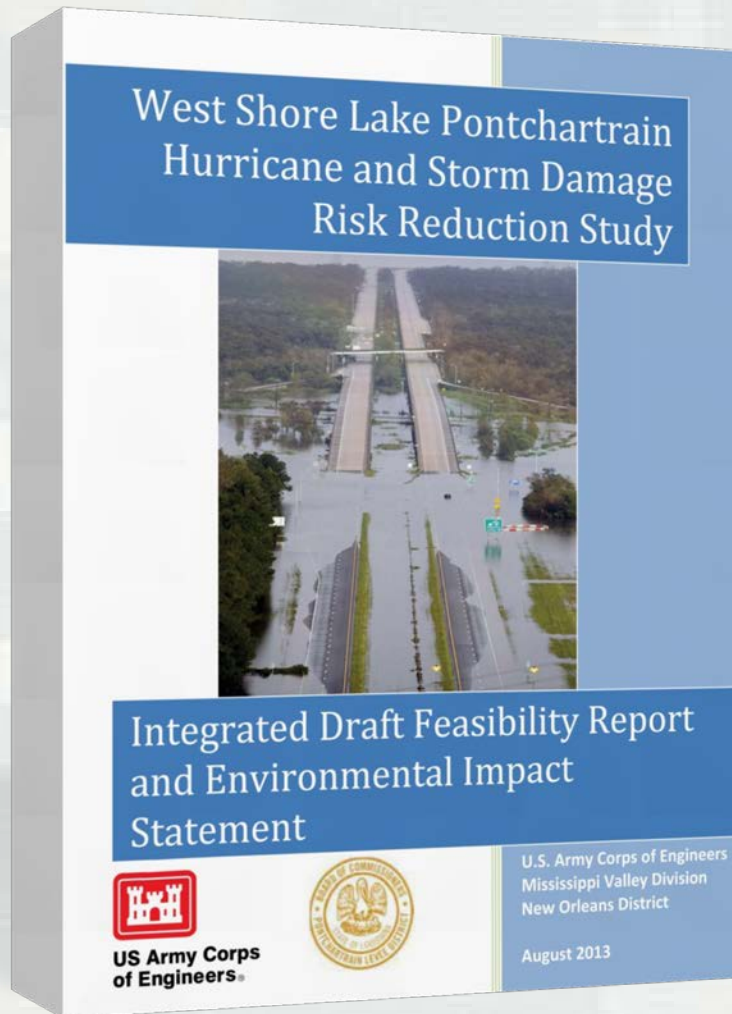


Nonstructural Component for St. James Parish

- Raise or acquire 1,571 structures over time in St. James Parish that are susceptible to a 1% storm in 2070
- Cost-shared 65%-35% with NFS*
- Estimated cost is ~ \$300,000,000
- One time cost to implement non-structural vs. perpetual cost to maintain levee



Draft Integrated Feasibility Report and Environmental Impact Statement



Whenever a major Federal action significantly affects the environment, a detailed environmental impact statement of the proposed action shall be prepared



Draft Report is available through the following:

- **Hard Copies can be reviewed at the following**
 - St. John the Baptist Parish Library, 2920 New Highway 51, LaPlace, La. 70068
 - St. James Parish Library, 1879 West Main Street, Litcher, La. 70071
 - Earl K. Long Library – University of New Orleans, 2000 Lakeshore Dr., New Orleans, La. 70148
- **Electronic version is available on the U.S. Army Corps of Engineers, New Orleans District Website**

<http://www.mvn.usace.army.mil>



National Environmental Policy Act of 1969

Environmental information is available to the public before decisions are made and before actions are taken

After preparing a Draft EIS and before preparing a Final EIS, the Lead Agency shall request comments from: Federal, state, and local agencies, and the public including those persons or organizations that may be interested or potentially affected by the proposed action

Agency shall assess & consider comments both individually & collectively with the following possible responses:

- Make factual corrections
- Supplement, improve, or modify analyses
- Modify alternatives
- Develop and evaluate new alternatives
- Explain why comment does not warrant further agency response



Draft Coordination Act Report

- Provides Recommendations to USACE to improve the proposed study
- US Fish and Wildlife Service (USWFS) coordinates with National Marine Fisheries (NMFS) and Louisiana Department of Wildlife and Fisheries (LDWF)
- Required by Section 2(b) of the Fish and Wildlife Coordination Act



Draft Coordination Act Report

- Features, such as culverts and other structures to maintain hydrology should be included in the project to protect and conserve wetland values of the area
- Preservation of enclosed wetlands/flood storage be ensured (in perpetuity) via the purchase of non-development easements and local flood zoning ordinances
- Minimize impacts to nearby restoration projects
- Appropriate mitigation should include minimizing and/or avoiding impacts to wetlands, Wildlife Management Areas, and Scenic Rivers(e.g. Blind River) and replacing what is lost.
- Continued coordination for threatened and endangered species(ESA), Bald Eagles(BGEPA), Migratory Birds(MBTA)



Public Comment - Overview

- **Speakers will have a maximum of 3-minutes at the microphone**
- **Participants who wish to speak for a second time must wait until everyone has had an opportunity to ask a question or make a comment**
- **Speakers may not yield unused portions of their time to another speaker**
- **All comments, written or verbal, become a part of the official record for WSLP**
- **All comments, written or verbal, are considered equally**
- **We ask that the audience remain quiet while a comment is being provided to ensure accurate recording of the information**



Additional Ways to Submit Comments

- **West Shore Lake Pontchartrain Draft Report**
 - **Public review Aug. 23 through Oct. 8, 2013**
- **Comments can be submitted by:**
 - **Calling: 504-862-2540**
 - **E-mailing: WSLPadmin@usace.army.mil**
 - **Mailed to: Dr. William Klein, PDN-CEP,
P.O. Box 60267,
New Orleans, LA 70160-0267**



Formal Submission of Public Comments

