



# CALCASIEU LOCK

November 2013

U.S. ARMY CORPS OF ENGINEERS

BUILDING STRONG®

## Project Purpose

The Calcasieu Lock, LA is a feature of the Gulf Intracoastal Waterway (GIWW) system between Apalachee Bay, FL, & the Mexican Border Project. The lock facilitates navigation and prevents saltwater intrusion from the Calcasieu River into the Mermentau River Basin, a major rice producing area. The Calcasieu Lock is the 10<sup>th</sup> busiest lock in the Nation and is a vital component of barge traffic transporting petrochemical products along the GIWW.

## Project Location

The Calcasieu Lock is located on the GIWW, just east of the Calcasieu River, in Cameron Parish, LA, approximately 10 miles south of Lake Charles, LA.

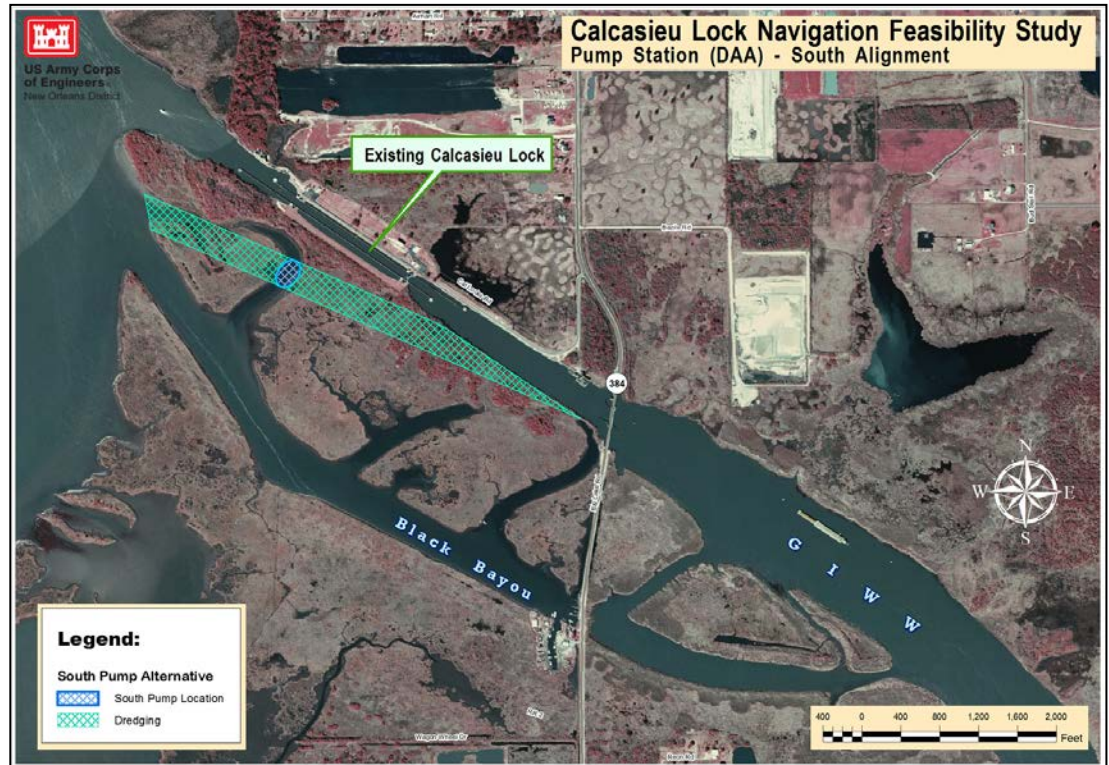
## Project Features

The lock was completed in 1950 and has dimensions of 13 feet deep, 75 feet wide and 1,206 feet long. The lock is structurally sound; however, increased traffic is causing congestion and navigation delays. Significant navigation delays are being experienced at the lock, especially during high water events in the Mermentau Basin when the lock is open to relieve agricultural flooding in the area and closed to navigation.

In an effort to address these navigation delays and maintain drainage for the Mermentau Basin, the Army Corps of Engineers is conducting the Calcasieu Lock Navigation Feasibility Study to determine the benefits of replacing the existing Calcasieu Lock. The principal issue to be addressed by the feasibility study is the delays to navigation induced through operation of the Calcasieu Lock for drainage of the Mermentau River Basin as part of its authorized purpose. The primary opportunities are to reduce or eliminate commercial traffic delays and improve the national and regional economic conditions. Also, the Calcasieu Lock is approximately 60 years old and is past its 50-year operational life span.

## Project Status

The Calcasieu Lock Navigation Feasibility Study is underway. Significant modeling efforts have been undertaken to document the economic impact of using the lock for flood control/salinity intrusion. The project was in the President's Budget in FY 13. The Calcasieu Lock Draft Integrated Feasibility Study and Environmental Impact Statement is now available for public review until December 2, 2013. The Draft Report identifies the South Alignment with a 75 foot wide gated structure as the Tentatively Selected Plan (TSP).



U.S. ARMY CORPS OF ENGINEERS – NEW ORLEANS DISTRICT  
7400 LEAKE AVENUE, NEW ORLEANS, LA 70118

[www.mvn.usace.army.mil](http://www.mvn.usace.army.mil)

Visit the following links to follow us on Facebook, Twitter and Flickr:

<http://www.facebook.com/usacenola>

<http://twitter.com/teamneworleans>

<http://www.flickr.com/photos/teamneworleans>